

**VOL. XXXV**

**No. 1**

# **BOISE COLLEGE**

**including the**

**JUNIOR COLLEGE DIVISION**

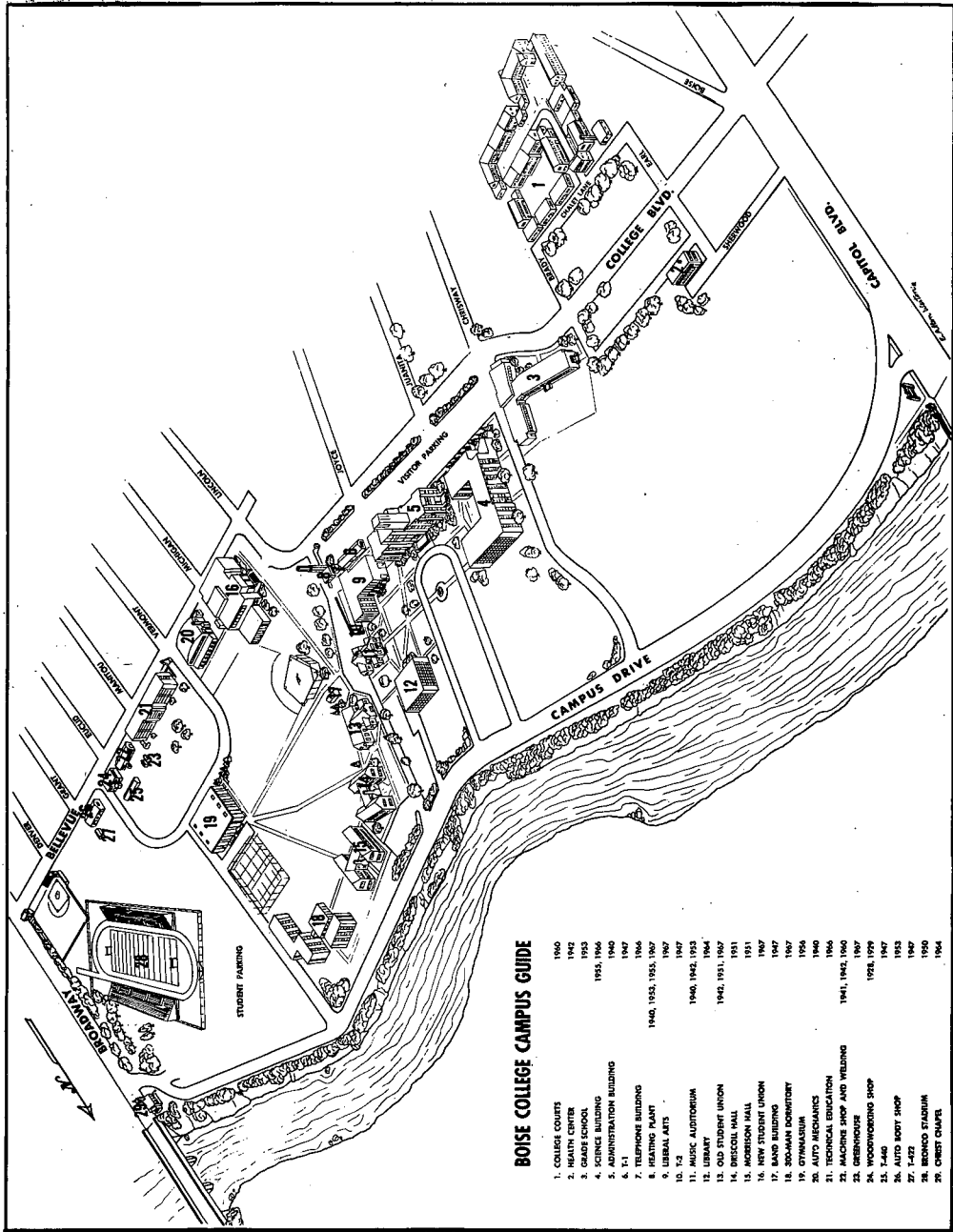
**and**

**THE AREA VOCATIONAL SCHOOL**



**CATALOG**  
**1967-1968**

**BOISE, IDAHO**



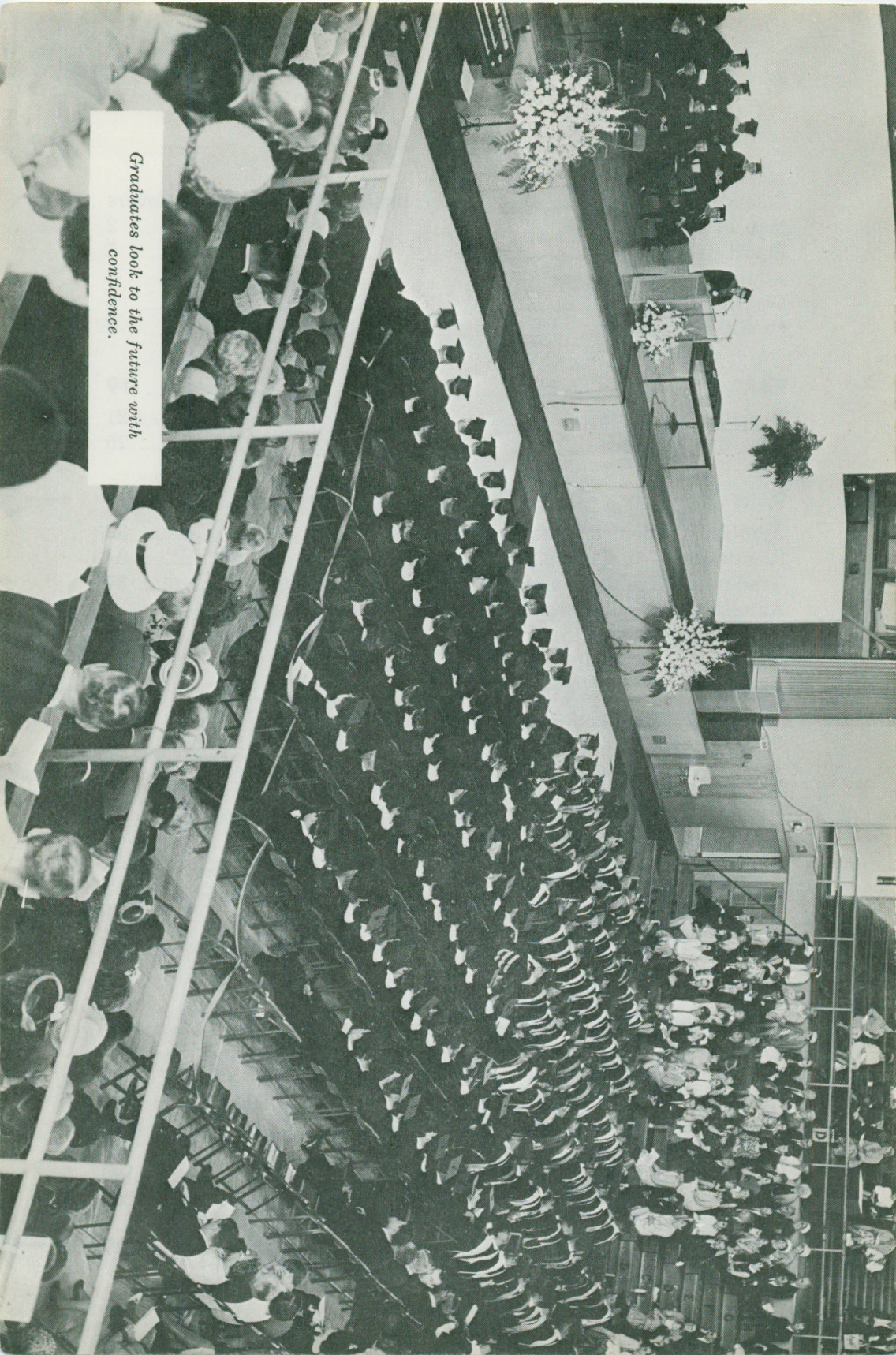
### BOISE COLLEGE CAMPUS GUIDE

- |                              |                        |
|------------------------------|------------------------|
| 1. COLLEGE COURTS            | 1960                   |
| 2. HEALTH CENTER             | 1942                   |
| 3. GRADE SCHOOL              | 1953                   |
| 4. SCIENCE BUILDING          | 1953, 1966             |
| 5. ADMINISTRATION BUILDING   | 1942, 1947, 1967       |
| 6. E. 1                      | 1966                   |
| 7. TELEPHONE BUILDING        | 1940, 1953, 1955, 1967 |
| 8. HEATING PLANT             | 1967                   |
| 9. LIBERAL ARTS              | 1967                   |
| 10. T.3                      | 1940, 1942, 1953       |
| 11. MUSIC AUDITORIUM         | 1942, 1951, 1967       |
| 12. LIBRARY                  | 1942, 1951, 1967       |
| 13. OLD STUDENT UNION        | 1951                   |
| 14. BRICKER HALL             | 1947                   |
| 15. NEW STUDENT UNION        | 1967                   |
| 16. BAND BUILDING            | 1947                   |
| 17. SOD-HALL DOMINIARY       | 1957                   |
| 18. SOD-HALL                 | 1954                   |
| 19. GYMNASIUM                | 1940                   |
| 20. AUTO MECHANICS           | 1966                   |
| 21. TECHNICAL EDUCATION      | 1941, 1942, 1960       |
| 22. MACHINE SHOP AND WELDING | 1967                   |
| 23. GREENHOUSE               | 1958, 1959             |
| 24. WOODWORKING SHOP         | 1958                   |
| 25. AUTO BODY SHOP           | 1953                   |
| 26. T-227                    | 1967                   |
| 27. BOARDS STADIUM           | 1950                   |
| 28. BOARDS STADIUM           | 1964                   |
| 29. CHRIST CHAPEL            | 1964                   |

# TABLE OF CONTENTS

|  |                              |
|--|------------------------------|
| Calendars .....  | Inside Front and Back Covers |
| Map of Campus .....  | 2                            |
| Board of Trustees .....  | 5                            |
| Administrative Officers .....  | 5                            |
| Division Chairmen .....  | 6                            |
| Faculty .....  | 7                            |
| <b>PART I</b> .....  | <b>19</b>                    |
| General Information .....  | 21                           |
| Fees and Charges .....   | 25                           |
| <b>PART II</b> .....   | <b>31</b>                    |
| Admission Requirements .....   | 32                           |
| Regulations—Junior College Division .....                                  | 34                           |
| Graduation Requirements—Junior College Division .....                      | 37                           |
| Admission, Regulations and Graduation Requirements<br>Upper Division ..... | 38                           |
| <b>PART III</b> .....  | <b>41</b>                    |
| Student Personnel Services .....   | 42                           |
| <b>PART IV</b> .....   | <b>55</b>                    |
| Junior College Division Curricula .....                                    | 56                           |
| Lower Division Curricula .....   | 56                           |
| Semi-professional Curricula .....  | 64                           |
| Vocational Curricula .....   | 67                           |
| Technical Curricula .....  | 71                           |
| Senior College Curricula .....   | 77                           |
| <b>PART V</b> .....  | <b>133</b>                   |
| Course Descriptions & Course Numbering System .....                        | 135                          |
| Business and Economics Division .....                                      | 136                          |
| Humanities Division .....  | 145                          |
| Life Science Division .....  | 163                          |
| Physical Science Division .....  | 172                          |
| Social Science Division .....  | 178                          |
| Vocational-Technical Education Division .....                              | 190                          |
| Register of Students .....   | 205                          |
| <b>INDEX</b> .....   | <b>209</b>                   |





*Graduates look to the future with confidence.*



# BOISE COLLEGE

## BOARD OF TRUSTEES

R. S. OVERSTREET  
JOHN P. TATE

JAMES D. MCCLARY  
DONALD M. DAY

RALPH J. COMSTOCK, JR.  
DR. EUGENE B. CHAFFEE, CHANCELLOR

## OFFICERS OF THE BOARD

R. S. OVERSTREET ..... *Chairman*  
JOHN P. TATE ..... *Vice-Chairman*  
DWANE R. KERN ..... *Secretary-Treasurer*

## ADMINISTRATIVE OFFICERS

JOHN B. BARNES ..... *President*  
B.A., M.A., Ed.D.  
(appointment effective June 1, 1967)

W. L. GOTTENBERG ..... *Vice President*  
B.A., M.A.  
(Acting President December 1, 1966 to June 1, 1967)

ACEL H. CHATBURN ..... *Dean of Faculty*  
B.A., M.A., Ed.D.

J. ALFRED MCCAUSLIN ..... *Dean of Student Personnel Services*  
B.A., M.A., M.S., Ed.D.

DWANE R. KERN ..... *Business Manager*  
B.A.

\*JAMES R. WOLFE ..... *Assistant Dean of Faculty*  
B.S., M.B.A.

GERALD R. REED ..... *Academic Affairs Coordinator*  
B.S.Ed., M.Ed., Ed.D.

HELEN E. MOORE ..... *Dean of Women*  
B.A., M.A.

EDWIN E. WILKINSON ..... *Dean of Men*  
B.A., M.A.

ALICE H. HATTON ..... *Registrar*  
B.A.

MARY T. HERSHEY ..... *Registrar Emeritus*  
B.A.

SAMUEL B. RIGHTER ..... *Director of Admissions*  
B.S., M.Ed.

GORDON G. PHILLIPS ..... *Purchasing Agent*  
A.A., B.S.

FREDERICK J. KELLER ..... *Director of Data Processing*  
B.A.

STEPHEN E. MALONEY ..... *Programmer, Data Processing Center*  
B.S.

HERBERT O. MENGEL ..... *Director of Buildings and Grounds*  
B.S.

PHILIP A. RANKE ..... *Director of Student Center*  
B.A., M.A.

ROBERT D. BAKER ..... *Administrative Assistant to Vice President*  
B.S.

HERBERT W. RUNNER ..... *Assistant to the Dean of Faculty*  
B.A., M.S.

THEODORE F. KEITH ..... *Administrative Assistant, Business Office*  
B.S.

\*Sabbatical Leave, 1967-68.

LUCILLE COPPLE ..... *Chief Accountant*  
 ROSA E. PUTNAM ..... *Recorder*  
 ROBERT WATTS ..... *Manager, Print Shop*  
 ELIZABETH FORSYTH ..... *Manager, Book Store*  
 PAULINE HINMAN ..... *Manager, Placement Service*  
 JACQUELYN CASSELL ..... *Secretary to the President*  
 MARGARET BETTY ..... *Secretary to the Vice President*  
 TEDDIE FERGUSON ..... *Secretary to the Dean of Faculty*  
 BETTY OLSEN ..... *Secretary to the Dean of Student Personnel Services*  
 JUANITA LING ..... *Secretary to the Business Manager*  
 MARGUERITE GIBBENS ..... *Resident Director, Falk House*  
 GLESSIE CORBIN ..... *Resident Director, Men's Dormitory*  
 NELL ELISON ..... *Resident Director, Morrison Hall*  
 ADDIE WESCOTT ..... *Resident Director, Driscoll Hall*

### DIVISION CHAIRMEN

ROBERT E. ROSE ..... *Business and Economics*  
 B.A., M.A., Ph.D.  
 WILLIAM E. SHANKWEILER ..... *Humanities*  
 B.F.A., M.F.A., Ph.D.  
 DONALD J. OBEE ..... *Life Sciences*  
 B.A., M.A., Ph.D.  
 JOHN L. PHILLIPS, JR. .... *Social Sciences*  
 B.A., M.A., Ph.D.  
 JOSEPH B. SPULNIK ..... *Physical Sciences*  
 B.S., M.S., Ph.D.  
 W. L. GOTTENBERG ..... *Chairman, and Acting Local*  
 B.A., M.A. *Director of Vocational-Technical*

### LIBRARY

RUTH MCBIRNEY ..... *Librarian*  
 B.A., B.A. in Librarianship  
 MARCIA SIGLER ..... *Cataloger*  
 A.A., B.A., B.S., M.L.S.  
 EVELYN EVERTS ..... *Assistant Librarian*  
 B.S., B.A. in Librarianship  
 LOIS K. ORMSBY ..... *Reference Librarian*  
 B.A., M.A., M.S. in Library Science  
 DOROTHY S. DINSMORE ..... *Assistant Librarian*  
 B.A., M.S. in Library Science

### MEDICAL SERVICE

BRUCE C. BUDGE ..... *Physician*  
 M.D.  
 JERINE BROWN ..... *Nurse*  
 R.N.

# BOISE COLLEGE

## FACULTY\*

(The date in parentheses is the time of first appointment)

- ALLEN, ROGER H., Instructor ..... *Business* (1966)  
A.A., Boise Junior College; B.S., University of Nevada; M.B.A.,  
Northwestern University.
- ALLISON, THELMA F., Associate Professor ..... *Home Economics* (1946)  
B.S. (H.Ec.), Utah State Agricultural College; University of  
Utah; Brigham Young University; M.S. (H.Ec.Ed.), Utah State  
Agricultural College; Carbon College; Oregon State University.
- ANDERSON, JANE L., Assistant Professor ..... *Physical Education* (1967)  
B.S., M.H.P.E.R. North Texas State University; University of  
Idaho.
- ARMSTRONG, PHOEBE L., Instructor ..... *History* (1966)  
B.S., M.S., Drake University.
- BABCOCK, WILLIAM A., Instructor ..... *History* (1967)  
B.A., M.A., University of Oregon.
- BAKER, BESSIE M., Assistant Professor ..... *English* (1966)  
B.S. (Ed.), University of Idaho; M.A., College of Idaho.
- BAKER, ROBERT D. .... *Administrative Assistant to the Vice President* (1965)  
B.S., Montana State College; University of Idaho.
- BARNES, JOHN B., ..... *President* (1967)  
B.A., M.A., University of Denver; Ed.D., University of Wyom-  
ing.
- BECKWITH, JOHN A., Assistant Professor ..... *English* (1965)  
B.A., Gooding College; M.A., University of Idaho; University of  
California at Los Angeles, American Institute of Gemology at  
Los Angeles.
- BELKNAP, H. WILLIAM, Assistant Professor ..... *Life Sciences* (1959)  
B.S., College of Idaho; M.S., Louisiana State University; Ari-  
zona State University; University of Oregon.
- BEST, JOHN H., Associate Professor ..... *Orchestra, Cello, Theory* (1947)  
B.S., University of Idaho; M.A., Colorado State College of Edu-  
cation; Cello Pupil of Elias Trustman and Joseph Wezels;  
Composition and Theory, pupil of J. DeForest Cline and Henry  
Trustman Ginsburg.
- BLICKENSTAFF, V. DALE, Associate Professor ..... *Business* (1967)  
B.S., McPherson College; M.S., Fort Hays State College; Ed.D.,  
Colorado State College; Oklahoma State University.
- BOYLES, JEAN, Instructor ..... *Physical Education* (1949-57; 1962)  
A.B., University of California; M.S., University of Colorado.
- BRATT, C. GRIFFITH, Professor ..... *Theory, Choir, Organ* (1946)  
Mus.M., Artist's diploma in Organ, Peabody Conservatory of  
Music, Baltimore, Md.; A.A.G.O., University of Baltimore; John  
Hopkins University; University of Utah, Composer in Residence.
- BRENNER, GARY, Associate Professor ..... *English* (1967)  
B.A., M.A.Ph.D., University of Washington.
- BRONSON, WILLIAM S., Professor ..... *Psychology* (1954)  
B.A., M.A., University of Idaho; Washington State University;  
Ed.D., University of Colorado.
- BUCHANAN, JAMES R., Assistant Professor ..... *Welding* (1959)  
Heli-arc School of Welding for Bechtel Corporation, San Fran-  
cisco; Heli-arc School, Atomic Energy Commission, Arco, Idaho,  
and Paducah, Kentucky; Vocational Education, National Defense,  
Boise; Boise Junior College; Idaho State College.
- BUCK, ELSIE M., Professor ..... *Mathematics* (1932-34; 1937)  
B.A., M.A., Ph.D., University of California; University of Chi-  
cago; University of Washington.

\*Correct to August 1, 1967.



- BURNS, AILEEN I., Instructor ..... *English* (1967)  
University of Auckland, New Zealand; B.A., Brigham Young University.
- CANAVAN, THOMAS J., Instructor ..... *Technical Education* (1964)  
A.B., University of Illinois
- CARSON, WILLIAM J., Assistant Professor ..... *Business* (1963)  
B.S., University of Notre Dame; M.B.A., University of Denver; University of Wyoming.
- CAYLOR, JOHN A., Professor ..... *History* (1965)  
A.B., Nebraska Teachers' College; M.A., Ph.D., University of Nebraska.
- CHAFFEE, WILLA M., Instructor ..... *Practical Nurses Training* (1967)  
R.N., St. Lukes Hospital; University of Colorado.
- CHANDLER, LUANNE, Instructor ..... *Secretarial Science* (1964)  
B.A., San Jose State College; M.Ed., Montana State University; University of Nevada; University of Idaho.
- CHATBURN, ACEL H. .... *Dean of Faculty* (1944)  
B.A., College of Idaho; University of Idaho; M.A., University of Colorado; Ed. D., Washington State University; University of California at Berkeley.
- COFIELD, DEWEY H., Instructor ..... *Electronics* (1961)  
University of Idaho; Idaho State College
- COLLINS, MARCUS W., Professor ..... *Sociology* (1967)  
B.A., University of Alabama; M.A., George Washington University; M.A., Ph.D., Harvard University.
- CONNER, DORAN L., Assistant Professor ..... *Physical Education* (1966)  
B.A., Idaho State College; M.S., Utah State University.
- COOPER, GENE, Professor ..... *Physical Education* (1967)  
B.S., M.S., D.Ed., University of Utah.
- CORBIN, A. ROBERT, Instructor ..... *Sociology* (1967)  
B.A., Blackburn College; M.A., University of Washington; Th.M., Iliff School of Theology.
- COX, T. VIRGINIA, Instructor ..... *Anthropology and Geography* (1967)  
B.A., San Diego State College; M.A., University of California at Davis.
- CROMWELL, LARRY D., Instructor ..... *Art* (1966)  
B.S., Fort Hays Kansas State College; M.A., Colorado State College.
- CROOKS, ALAN F., Assistant Professor ..... *English* (1965)  
B.A., College of Idaho; M.A., Utah State University.
- CROWSON, MARY LOUISE, Instructor ..... *Practical Nurse Training* (1966)  
B.S.N., University of Utah.
- CURTIS, BILL DARRELL, Instructor ..... *Auto Body* (1966)  
Diploma, Boise Junior College
- DAHM, NORMAN F., Professor ..... *Engineering* (1953)  
B.S., M.Ed., University of Colorado; Agricultural and Mechanical College of Texas; University of Washington; Bucknell University.
- DALTON, JACK L., Associate Professor ..... *Chemistry* (1958)  
B.S., Nebraska State Teachers College; M.S., Kansas State University of Agriculture and Applied Science; Kansas State College.
- \*DAVIS, CHARLES G., Assistant Professor ..... *English* (1963)  
A.B., Middlebury College, Vermont; M.A., University of California at Berkeley.
- DE LAURIER, ANNE N. .... *Counselor* (1967)  
B.A., College of Idaho; M.S., University of Oregon.

\*Leave of absence, 1966-67 and 1967-68.

- DE NEUFVILLE, ROBERT, Associate Professor . . . . . *German, French* (1940)  
B.A., M.A., New College, Oxford; Dr. Jr., Marburg University;  
Geneva University; Berlin University; Columbia University;  
Middlebury College.
- DEWEY, ROBERT M., Instructor . . . . . *Speech, Drama* (1967)  
B.A., College of Great Falls; M.A., University of Washington.
- DINSMORE, DOROTHY S. . . . . *Library* (1967)  
B.A., Eastern Nazarene College; M.S., Simmons College.
- DORMAN, PATRICIA M., Instructor . . . . . *Sociology* (1967)  
B.S., M.S., University of Utah.
- DUGGER, JEROLD O., Associate Professor . . . . . *Education* (1964)  
A.A., Scottsbluff Junior College; B.A., Hastings College; M.A.,  
Ed.D., Colorado State College; University of Colorado.
- EDELFSSEN, CLISBY T., Professor . . . . . *Business* (1939)  
B.A., College of Idaho; M.S.(Ed), University of Idaho; Arm-  
strong Business College; Berkeley, California; Ed.D., Stanford  
University.
- EMERSEN, J. CALVIN, Associate Professor . . . . . *Chemistry* (1933-40; 1960)  
A.B., Northwest Nazarene College; B.S., College of Idaho; M.S.,  
University of Idaho; University of Washington; Oregon State  
University.
- \*EVERTS, EVELYN, Assistant Professor . . . . . *Library* (1957)  
B.S., B.A. in Librarianship, University of Washington; Wash-  
ington State University.
- FAIRCHILD, MARJORIE E., Assistant Professor . . . . . *Library Science* (1966)  
A.B., University of California; M.A. in Librarianship, Uni-  
versity of Southern California; M.A., Library Science, Uni-  
versity of California at Berkeley.
- FARWIG, JEANNE M., Instructor . . . . . *Physical Education* (1966)  
B.S., University of Colorado; M.A., Colorado State College.
- FAULKNER, JIMMIE L., Assistant Professor . . . . . *Art* (1966)  
B.S. in Ed., M.A., Ball State University.
- FLEMING, NANCY L., Instructor . . . . . *Nursing Education* (1963)  
B.S., University of Nebraska College of Medicine.
- FLESHMAN, MILTON B., Assistant Professor . . . . . *Auto Mechanics* (1959)  
Idaho State College; Carter Carburetion Course; Delco-Remy  
Auto Electric Class; Allen Tune-up Equipment; Boise Junior Col-  
lege; Briggs & Stratton Factory Service School, Portland, Ore-  
gon; United Motors Service Courses.
- FOUNTAIN, CAROL E., Instructor . . . . . *Nursing Education* (1967)  
A.S., Boise Junior College; B.S. in Nursing, University of Wash-  
ington.
- FREDERICK, DARCY F., Instructor . . . . . *Mathematics* (1966)  
B.S., Portland State College; M.S., Oregon State University.
- \*FRITCHMAN, BEVERLY M., Assistant Professor *Chemistry* (1952-55) (1966)  
A.A., Boise Junior College; A.B., M.S., in Chem., Stanford  
University.
- \*FRITCHMAN, HARRY K., II, Professor . . . . . *Life Sciences* (1954)  
A.A., Boise Junior College; B.A., M.A., Ph.D., University of  
California at Berkeley; University of Oregon.
- FUEHRER, ALBERT M., Instructor . . . . . *Auto Mechanics* (1965)  
Northwest Nazarene College; Specialized Automotive Training
- FULLER, EUGENE G., Assistant Professor . . . . . *Zoology* (1967)  
B.S., M.S., University of Nevada; Ph.D., Oregon State Uni-  
versity.
- FUNG, WILLIAM Y., Assistant Professor . . . . . *Philosophy* (1961)  
A.B. Lingnan University; M.A., University of Southern Cali-  
fornia; Union Theological Seminary, New York City; Ph.D.,  
New York University.

\*Leave of Absence 1967-68.

- GINES, RALPH J., Assistant Professor ..... *Business* (1967)  
B.S., Brigham Young University; L.L.B., George Washington University.
- GLENDINNING, MOLLIE, Instructor ..... *Practical Nurse Training* (1964)  
R.N., Wyckoff Heights Hospital School of Nursing; U.S. Navy Nurse Corps; Idaho State University.
- GOODWIN, KATHRYN, Instructor ..... *Nursing Education* (1965)  
B.S., University of Oregon.
- GOTTENBERG, W. L. . . . *Vice President* (1947) *Acting President* (12/66-6/67)  
B.A., University of North Dakota; M.A., University of Montana; University of Oregon; University of Washington; La Escuela Interamericana, Saltillo, Mexico; U.S. Department of State Education Specialist to the Carribbean and Latin America.
- GOULD, C. WALLACE, Associate Professor ..... *Music, History* (1966)  
B. Mus., M. Mus., Oberlin College; Ph.D., Northwestern University.
- HAGER, JOHN F., Associate Professor ..... *Machine Shop* (1954)  
Warren Trade School, Los Angeles; Idaho State College.
- HAHN, CLAYTON W., Assistant Professor ..... *Engineering* (1948-52, 1963)  
B.S. (M.E.), University of Colorado; University of Montana; Montana State College; University of California at Los Angeles; University of Southern California.
- HANFORD, DAVID W., Instructor ..... *Life Science* (1967)  
B.S., University of Idaho; D.D.S., Northwestern University Dental School.
- HARRIS, ARDEN E., Instructor ..... *Office Machine Repair* (1965)  
Special Training in Office Machine Repair.
- HATCH, ADA Y., Professor ..... *English* (1932)  
B.A., M.A., University of Idaho; University of California; University of Chicago; University of Washington; independent study in England.
- HATTON, ALICE H. . . . . *Registrar* (1959)  
B.A., University of Washington; Colorado State College.
- HEACOCK, DELBERT D., Instructor ..... *Psychology* (1966)  
B.A., College of Idaho; M.S., University of Utah.
- HIBBS, ROBERT A., Associate Professor ..... *Physical Sciences* (1965)  
B.S., M.S., University of Florida; Ph.D., Washington State University.
- HILL, KENNETH L., Associate Professor ..... *Director, Instructional Materials Center* (1962)  
B.S., Montana State College; M.S.(Ed), University of Washington; University of Idaho; Eastern Washington State College.
- HOPFENBECK, THEODORE, Instructor ..... *Law Enforcement* (1967)  
B.S., M.Ed., University of Arizona.
- HOUST, HENRY E., Instructor ..... *Drill Team* (1965)  
B.S., College of Idaho.
- HOYER, DORIS, Associate Professor ..... *Education* (1965)  
B.S., M.S. (Ed), M.A., University of Idaho.
- HUFF, HOWARD L., Instructor ..... *Art* (1965)  
Diploma, Boise Junior College; B.A., College of Idaho; M.F.A., University of Idaho.
- HUNT, ELMER E., JR., Assistant Professor ..... *Mathematics* (1959)  
B.A., M.Ed., Washington State University; Oregon State University; University of Georgia.



- JOHNSON, HELEN R., Associate Professor . . . . . *Secretarial Science* (1955)  
B.A., Northwest Nazarene College; University of Idaho; Oregon State University; University of Washington; M.A., College of Idaho; University of California at Berkeley; Arizona State University.
- KEITH, THEODORE F. . . . . *Administrative Assistant, Business Office* (1966)  
B.S., University of Idaho
- KELLER, FRANCIS E., Assistant Professor . . . . . *Mathematics* (1967)  
B.S., Seattle University; M.S., University of Idaho; Ph.D., Montana State University.
- KELLER, FREDERICK J., Instructor . . . . . *Director of Data Processing* (1966)  
B.A., Michigan State University.
- KELLER, MARY LOUISE, Instructor . . . . . *Nursing Education* (1959)  
Diploma, Samaritan Hospital School of Nursing, Nampa, Idaho; B.S., Northwest Nazarene College; University of Washington; University of California at Los Angeles.
- KELLY, DORIS, Assistant Professor . . . . . *Nursing Education* (1958)  
Diploma, Cook County School of Nursing; B.A., University of Denver; M.N., University of Washington.
- KERN, DWANE R. . . . . *Business Manager* (1960)  
B.A., College of Idaho; University of Omaha.
- KNOWLTON, LEO L., Assistant Professor . . . . . *Mid-Management* (1965)  
B.S., M.S., University of Idaho; University of Oregon.
- KRIGBAUM, NOEL, Assistant Professor . . . . . *Carpentry and Cabinetmaking* (1955)  
Electricians School, Navy; Idaho State College.
- KUYKENDALL, CAROLYN, Instructor . . . . . *English* (1966)  
B.A., University of Tennessee; M.A., University of Chicago.
- LARSON, L. WARDELL, Instructor . . . . . *Psychology* (1967)  
B.A., Washington State University; M.A., Colorado State College.
- LEE, DOROTHY, Associate Professor . . . . . *Secretarial Science* (1953)  
B.Sc. in Ed., University of Nebraska; M.A., College of Idaho; State University of New York, College at Plattsburg; University of Idaho.
- LEVITT, MONTE L., Instructor . . . . . *Dental Assisting* (1965)  
D.D.S., Loyola University.
- LEWIS, RAY, Assistant Professor . . . . . *Physical Education* (1956)  
B.S. (Ed.), M.Ed., University of Idaho.
- LOVIN, HUGH T., Associate Professor . . . . . *History* (1965)  
B.A., Idaho State College; M.A., Washington State University; Ph.D., University of Washington.
- MACINNIS, JEAN, Instructor . . . . . *Dental Assisting* (1962)  
C.D.A., University of North Carolina; Dental Assistant—20 years practice; Dental Office Administration and Human Relations and Oral Roentgenology Courses sponsored by Idaho Dental Association; Boise Junior College; Idaho State University.
- MACMILLAN, JOHN, Instructor . . . . . *Public Relations and Journalism* (1967)  
B.A., University of Washington.
- MALONEY, STEPHEN E., Instructor . . . . . *Programmer, Data Processing* (1966)  
B.S., College of Idaho.
- MARSALL, ADELAIDE ANDERSON, Instructor . . . . . *Piano* (1939-48) (1966)  
B.M., M.M., Chicago Musical College.

- MCBIRNEY, RUTH, Associate Professor . . . . . *Librarian* (1940-42, 1953)  
Boise Junior College; A.B. Whitman College; B.A. in Librarianship, University of Washington; Columbia University; University of London; University of California at Berkeley; Rutgers University.
- MCCAUSLIN, J. ALFRED . . . . . *Dean of Student Personnel Services* (1965)  
B.A., Rollins College; M.A., M.S., Pennsylvania State University; Ed.D., University of Maryland.
- MCCAUSLIN, PHYLLIS A., Assistant Professor . . . . . *English* (1965)  
B.S., Mansfield State College; Pennsylvania State University; M.Ed., Bloomsburg State College.
- MCGUIRE, SHERRY A., Instructor . . . . . *English* (1967)  
B.A., University of Idaho; M.A., Washington State University.
- MENDEL, HERBERT O. . . . . *Director of Buildings and Grounds* (1966)  
B.S., Pennsylvania State University.
- MEYER, CARROLL J., Associate Professor . . . . . *Piano* (1948)  
B.M., University of Michigan; Pupil of Ethel Leginska and Cecile de Horvath; M.M., University of Iowa.
- MILES, FLORENCE M., Associate Professor . . . . . *Nursing Education* (1965)  
Diploma, School of Nursing, St. Luke's Hospital; B.S. N.E., M.N., University of Washington; University of California at Los Angeles.
- MILLARD, DOUGLAS S., Instructor . . . . . *Office Machine Repair* (1966)  
Special training and schools in office machine operation and repair.
- MILLER, ROBERT T., Associate Professor . . . . . *Business* (1963)  
B.S., University of Oregon; LL.B., Columbia University; University of Idaho.
- MITCHELL, KATHRYN E., Assistant Professor . . . . . *Piano, Violin* (1932-38; 1939)  
Institute of Musical Art, New York; Pupil of Franz Mairecker at the Meister Schule, Statts Akademie, Vienna, Austria; studied with Louis Persinger and with Henri Temianka.
- MOORE, HELEN E. . . . . *Dean of Women, English* (1947)  
B.A., Drake University; M.A., University of Washington; University of Utrecht, Netherlands.
- MOORE, POLLY K., Associate Professor . . . . . *Home Economics* (1962)  
B.S., M.S., Ph.D., Pennsylvania State College.
- MOORE, RICHARD L., Instructor . . . . . *Dental Assisting* (1966)  
B.A., University of Idaho; D.D.S., College of Physicians and Surgeons.
- NEWBY, GARY R., Assistant Professor . . . . . *Physics* (1966)  
B.S., Ph.D., Arizona State University.
- OAKES, DONALD, Instructor . . . . . *Music* (1964)  
B.M., M.M., Northwestern University.
- OBEE, DONALD J., Professor . . . . . *Life Sciences* (1946)  
B.A., M.A., Ph.D., University of Kansas; Oregon State University; University of Oregon School of Marine Biology; Arizona State University; University of North Carolina.
- ODGEN, JOHN T., Instructor . . . . . *Welding* (1965)  
Diploma, Boise Junior College; Navy Training Schools; Special Training and Experience in Welding.
- ORAVEZ, DAVID L., Assistant Professor . . . . . *Art* (1964)  
B.S., M.A., M.F.A., University of Wisconsin; Summer School of Painting at Satutuck, Michigan.

- ORMSBY, LOIS K., Assistant Professor . . . . . *Reference Librarian* (1965)  
Diploma, Oregon Normal School; B.A., Drake University; University of Washington; M.A., University of Southern California; M.S., Syracuse University.
- GTT, MELVIN L., Instructor . . . . . *Mathematics* (1967)  
B.S., Eastern Oregon College; M.S., Utah State University.
- OURADA, PATRICIA K., Associate Professor . . . . . *History* (1962)  
B.A., College of Saint Catherine; M.A., University of Colorado; University of Laval; University of Michigan.
- OWNBEY, RAY W., Instructor . . . . . *English* (1966)  
B.S., University of Oregon; M.A. in Teaching, Reed College.
- OYLER, NELDON D., Instructor . . . . . *Horticulture* (1966)  
A.S., Snow College; B.S., Brigham Young University.
- PAPENFUSS, HERBERT D., Assistant Professor . . . . . *Life Science* (1967)  
B.S., University of Utah; M.S., Brigham Young University; Ph.D., Colorado State University.
- PECK, LOUIS A., Associate Professor . . . . . *Art* (1955)  
B.A., College of Idaho; University of California, Santa Barbara; M.S., Utah State University; Rex Brandt School of Art.
- PEEK, MARGARET M., Assistant Professor . . . . . *English* (1967)  
B.A., M.A., University of Alaska.
- PETERSON, AVERY F., Assistant Professor . . . . . *Political Science* (1965)  
B.S., Georgetown University; Graduate, National War College; University of Idaho; American Foreign Service Career and Deputy Asst. Secretary of State; University of British Columbia.
- PETERSON, ELLIS RAY, Associate Professor . . . . . *Chemistry, Physics* (1964)  
B.S., M.S., Utah State University; Ph.D., Washington State University.
- PHILLIPS, GORDON G. . . . . *Purchasing Agent* (1964)  
A.A., Boise Junior College; B.S., University of Colorado.
- PHILLIPS, JOHN L., JR., Professor . . . . . *Psychology* (1954)  
B.A., M.A., Reed College; Ph.D., University of Utah; University of Idaho; Beloit College; University of Washington; University of California.
- PITMAN, C. HARVEY, Assistant Professor . . . . . *English, Debate* (1966)  
B.A., College of Idaho; M.Ed., Washington State University.
- REED, GERALD R. . . . . *Academic Affairs Coordinator* (1967)  
B.S. Ed., University of Wyoming; M.Ed., University of Idaho; Ed.D., Washington State University.
- ROBERTSON, VAUGHN E., Instructor . . . . . *Machine Shop* (1966)  
Diploma, Boise Junior College; Foothill Junior College.
- RIGHTER, SAMUEL B. . . . . *Director of Admissions* (1965)  
B.S., University of Oregon; M.Ed., University of Portland.
- ROE, HAZEL MARY, Associate Professor . . . . . *Secretarial Science* (1942-44; 1947)  
B.A., M.A., University of Idaho; Northwestern University; University of Washington; Oregon State College; independent study in Peru and Chile.
- ROSE, ROBERT E., Professor . . . . . *Business* (1953)  
B.A., M.A., Colorado State College; Ph.D., State University of Iowa.
- RUNFT, ENID, Instructor . . . . . *English* (1966)  
B.A., Sioux Falls College; M.A., University of Chicago.



- RUNNER, HERBERT W. . . . . *Assistant to the Dean of Faculty* (1967)  
B.A., University of Redlands; M.S., University of North Dakota.
- SATTERFIELD, MURRAY, Instructor . . . . . *Coach, Physical Education* (1965)  
B.S., University of Utah.
- \*SCHEFFER, MARTIN W., Assistant Professor . . . . . *Sociology* (1964)  
A.A., Diablo Valley College; B.S., M.S., University of Oregon;  
University of California; University of Oregon; Emory University.
- SCHROEDER, ALBERT W., Instructor . . . . . *Vocational Counselor* (1967)  
B.A., Idaho State College; M.Ed., Idaho State University.
- SCHWARTZ, J. ROY, Professor . . . . . *English* (1940)  
B.S., M.A., University of Oregon; University of Utah; independent study in England.
- SCUDDER, DUSTON R., Assistant Professor . . . . . *Distributive Education* (1964)  
B.S., B.A., M.A., University of Denver; University of Colorado; Colorado State University.
- SELANDER, GLENN E., Assistant Professor . . . . . *English* (1966)  
B.A., Southwestern University; M.A., Utah State University.
- SEWARD, JOHN A., Assistant Professor . . . . . *History* (1967)  
B.A., Morningside College; M.A., Moorhead State College.
- SHANKWEILER, WILLIAM E., Professor . . . . . *Speech, Drama* (1956)  
B.F.A., M.F.A., Goodman Memorial Theater; Ph.D., University of Denver.
- SIEBER, DONALD J., Instructor . . . . . *Electronics* (1963)  
U.S. Army Signal Corps; Burroughs Corporation; Montronics; Philco Corporation.
- SIGLER, MARCIA, Assistant Professor . . . . . *Cataloger* (1962)  
A.A., Boise Junior College; B.A., Ohio Wesleyan University; B.S., M.L.S., University of California at Berkeley.
- SKOV, ARNY R., Instructor . . . . . *Art* (1967)  
B.A., M.F.A., University of Idaho.
- SMART, FRANK H., Assistant Professor . . . . . *Mathematics* (1958)  
B.A., M.A., Colorado State College.
- SMEAD, JOHN P., Instructor . . . . . *Broadcasting, Public Speaking* (1966)  
B.A., M.A., University of Michigan.
- SMITH, CHARLES F., Instructor . . . . . *Art* (1967)  
B.A., College of Idaho; M.F.A., Washington State University.
- SMITH, DONALD F., Professor . . . . . *Psychology* (1967)  
A.B., Peru State College; M.Ed., Whittier College; M.Ed., Ed.D., University of Southern California.
- SMITH, LYLE, Professor . . . . . *Coach, Physical Education* (1946)  
B.S. (Ed.), M.S. (Ed.), University of Idaho.
- SNAVELY, ROBERT CARL, Instructor . . . . . *English* (1966)  
B.A., M.A., University of Omaha.
- SNELL, HAROLD, Assistant Professor . . . . . *Auto Mechanics* (1958)  
Allen Auto Electric, Boise; Carter Carburetor, Pendleton, Oregon; Chrysler Motor Corporation, Detroit, Michigan; General Motors Hydramatic Transmission and Hudson Motor Car Company, Detroit, Michigan; Idaho State College; Oregon State University; General Motors Training Center; Chrysler Training Center, Los Angeles.

\*Leave of Absence 1967-68.

- SPULNIK, JOSEPH B., Professor ..... *Chemistry* (1941)  
B.S., M.S., Ph.D., Oregon State University; Reed College; Portland State College.
- STANDING, GEORGIA V., Assistant Professor ..... *Voice, Speech* (1963)  
B.F.A., M.F.A., University of Utah; Curtis Institute of Music, Philadelphia; Private Study in Europe; Soloist with various national operas and symphonies.
- STARK, FRANK W., Assistant Professor ..... *Physical Science* (1957-61, 1967)  
B.S., M.S., Trinity College, University of Denver.
- STEARNS, JEANNE G., Associate Professor ..... *Physics* (1946)  
B.S., M.S., Tulane University; University of Pittsburgh; University of Colorado; University of Idaho; Montana State College; University of Wyoming.
- SYLVESTER, ROBERT B., Assistant Professor ..... *History* (1963)  
A.A., Boise Junior College; B.A., M.A., University of California at Santa Barbara.
- TENNYSON, ALBERT H., Instructor ..... *Industrial Psychology* (1966)  
B.A., College of Idaho; M.A., University of Idaho.
- THOMASON, NAN M., Instructor ..... *Nursing Education* (1967)  
R.N., St. Lukes Hospital; B.S., Montana State University.
- THOMPSON, TRACY E., Instructor ..... *English* (1966)  
B.A., New School for Social Research; M.A., San Francisco State College.
- TIPLING, RALPH M., Assistant Professor ..... *Law Enforcement* (1966)  
B.S., Washington State College; University of Arizona.
- TIPTON, CARL W., Assistant Professor ..... *Business* (1965)  
Iowa Wesleyan College; University of Washington; George Washington University; M.B.A., University of Chicago; University of Idaho.
- TOMPKINS, JAMES W., Assistant Professor *Vocational Related Subjects* (1963)  
A.B., Wheaton College; Th.B., Westminster Theological Seminary; University of Pennsylvania; Harvard University.
- TORBET, DAVID P., Professor ..... *Psychology* (1966)  
B.S., Pacific University; M.A., University of Oregon; Ph.D., University of Colorado.
- TORBET, ELSE, Assistant Professor ..... *Foreign Language* (1966)  
B.A., University of Oregon; Butler University; Purdue University.
- TOWNSEND, DEAN C., Instructor ..... *English* (1966)  
A.B., University of California at Berkeley; M.A., San Francisco State College.
- UNDERKOFER, G. W., Associate Professor ..... *Business* (1952)  
B.A., Nebraska Wesleyan University; University of Chicago; University of California, Los Angeles; University of Southern California; San Jose State College; Brigham Young University.
- VALVERDE, LUIS J., Associate Professor ..... *Foreign Language, English* (1965)  
B.A., Mankato State College; B.S., Southern Illinois University; M.A., University of Illinois; Ed.D., University of California at Los Angeles; University of Michigan; University of Washington; University of Texas; University of Indiana.
- VAN LIEW, WAYNE, Associate Professor ..... *Drafting-Design* (1961)  
B.S., M.S., Oklahoma State University; University of Tulsa; Idaho State College; University of Illinois; University of Arkansas.

- VOSKUIL, WALTER G., Instructor ..... *Economics* (1966)  
B.S., University of Nevada.
- WARNER, KATHLEEN C., Instructor ..... *English* (1966)  
B.A., University of Nevada; Arizona State University.
- WARNER, MONT M., Associate Professor ..... *Geology* (1967)  
A.B., M.A., Brigham Young University; Ph.D., State University  
of Iowa.
- WARWICK, JOHN E., Assistant Professor ..... *English, Speech* (1963)  
B.S., Quincy College, Illinois; M.F.A., Catholic University of  
America.
- WELLMAN, WADE, Instructor ..... *English* (1967)  
B.A., M.A., University of North Carolina.
- WELLS, MERLE W., Associate Professor ..... *History* (1965)  
A.B., College of Idaho; M.A., Ph.D., University of California,  
Berkeley.
- WENDELL, SHARON M., Instructor ..... *Nursing Education* (1966)  
B.S. in Nursing, University of Portland.
- WENSKI, EUGENE F., Instructor ..... *Mathematics* (1967)  
B.S., Gonzaga University; M.S., University of Idaho; Univer-  
sity of Washington.
- WESTFALL, HELEN, Associate Professor ..... *Physical Education* (1962)  
B.A., Simpson College; M.A., State University of Iowa; Uni-  
versity of Oklahoma; University of California at Los Angeles;  
Drury College; University of Illinois.
- WESTON, E. ALLEN, Instructor ..... *Drafting & Design* (1964)  
B.F.A., University of Arizona; Jefferson Machamer School of  
Art; Art Center School; USA Engineering Drafting School.
- WHITE, HELENE MARY, Assistant Professor ..... *Music* (1966)  
B.M., Illinois Wesleyan University; M.Mus., Northwestern Uni-  
versity.
- WHITE, WAYNE E., Associate Professor ..... *Economics, Business* (1965)  
A.A., Eastern Arizona Junior College; B.S., M.A., Arizona State  
University; University of Arizona.
- WILBANKS, THOMAS, Instructor ..... *English* (1964)  
A.B., Trinity University; Th.B., Princeton Theological Semi-  
nary; Th.M., Louisville Presbyterian Theological Seminary; Uni-  
versity of New Mexico.
- WILCOX, IRENE A., Instructor ..... *Social Work* (1966)  
B.A., University of Utah; Howard University; M.S.W., Wash-  
ington University.
- WILKINSON, EDWIN E. .... *Dean of Men, Psychology* (1958)  
B.A., Whitworth College; M.S., Washington State University;  
University of Oregon.
- WILLIAMSON, MARJORIE, Instructor ..... *Business Education* (1967)  
B.S., University of Kansas; M.S., University of Idaho.
- WILSON, DARRELL C., Associate Professor ..... *Political Science* (1967)  
B.S., Lewis and Clark College; M.A., Ph.D., University of  
Oregon.
- WILSON, PETER KLEIN, Associate Professor ..... *Business* (1966)  
B.A., University of Illinois; J.D., Northwestern University.



- WINANS, ELLA MAE, Assistant Professor ..... *Mathematics* (1958)  
B.S., University of Oregon; M.S., New York University.
- \*WOLFE, JAMES R., ..... *Asst. Dean of Faculty* (1960)  
B.S., M.B.A., Indiana University; University of California at  
Berkeley; Idaho State College; Stanford University.
- WOOD, BENJAMIN W., Instructor ..... *Biological Sciences* (1967)  
B.S., M.S., Brigham Young University.
- WOODWORTH, JOHN G., Associate Professor ..... *English* (1958)  
B.A., University of Oklahoma; M.A., University of Michigan;  
University of Iowa; Northwestern University; Iowa State Col-  
lege; Southern Oregon College; Oregon Shakespearean Festival.
- WU, HUNG-SEN, Assistant Professor ..... *English* (1962)  
A.B., Syracuse University; M.A. (Govt.), Harvard University;  
M.A. (English), Columbia University.
- WYLLIE, GILBERT A., Associate Professor ..... *Life Sciences* (1965)  
B.S., College of Idaho; M.A., Sacramento State College; Ph.D.,  
Purdue University.
- YOUNG, JERRY, Assistant Professor ..... *Mathematics* (1964)  
A.A., Centralia Junior College; B.A. (Math), B.A. (Ed.), Cen-  
tral Washington State College; M.A., Washington State Univer-  
sity.
- YOUNG, JOHN R., Professor ..... *Business* (1967)  
B.Ed., Whitewater State College; M.A., Ph.D., University of  
Iowa.
- YOUNG, VIRGIL M., Assistant Professor ..... *Education* (1967)  
B.S., M.Ed., Ed.D., University of Idaho.

### ELEMENTARY EDUCATION

#### SUPERVISING TEACHERS, CAMPUS SCHOOL

|                          |           |
|--------------------------|-----------|
| KEENER, KEITH .....      | Principal |
| NORELL, BARBARA .....    | Nurse     |
| FRITSCHLE, MARIEL .....  | Grade 1   |
| GOIN, ALICE .....        | Grade 4   |
| HAWKS, CARLOTA .....     | Grade 2   |
| HILLMAN, REVA .....      | Grade 3   |
| PHELPS, DORA .....       | Grade 5   |
| ROBERTS, DOROTHY .....   | Grade 4   |
| ROBERTS, DUANE .....     | Grade 6   |
| SEELEY, DOROTHA .....    | Grade 3   |
| TOOMAN, MARGUERITE ..... | Grade 1   |
| WARR, HARRY G. ....      | Grade 6   |
| WORDEN, MARIANNE .....   | Grade 2   |

\*Sabbatical Leave 1967-68.





*Students enjoy modern and spacious buildings.*

# PART I

## General Information





*Nerve center of the campus is the  
Administration Building.*

# BOISE COLLEGE

## HISTORY

Boise College is the product of citizens in action, and holds a reputation as a "community college" meeting the educational needs of the area. From the inception of the school, during the Depression 30s, to February 1965 when it acquired four-year status and the name — "Boise College" — the citizens have continuously supported plans for higher education.

When college seemed beyond the reach of many young people, in the spring of 1932, an Episcopal Bishop, the Right Reverend Middleton S. Barnwell, organized Boise Junior College. Its classes were held in St. Margaret's hall, a church-operated girls' academy. Several of the original faculty members are still with the school.

Two years later, in answer to an appeal from the Bishop, a group of visionary citizens formed a non-profit corporation to continue the operation of the fledgling school. The city of Boise, in turn, contributed land on which to build a campus, on a 110-acre tract south of the Boise River, the former municipal airport.

The Idaho Legislature helped lay the groundwork to make the college a public institution by passing an enabling act in February, 1939, permitting the formation of junior college districts. Within a month, the Boise Junior College District was formed by a large majority of the qualified voters, and the school opened that fall as a public institution. Another district vote, by a 10 to 1 majority, approved the necessary funds to start building a college plant.

Repeatedly, the college district electorate has provided the facilities and faculty for the ever growing needs of the college, as the daytime and night school enrollments increase. For the 1966-67 school year total enrollment in all sessions, including summer school, night school at Boise and Mountain Home Air Force Base, was more than 6,750, (as compared to the original 105 students in 1932). Boise Junior College was a fully accredited junior college over a period of 33 years.

The 1965 Legislature acted to form a new four-year degree granting institution, Boise College. The first upper division courses were offered during the summer session of 1965 and the first graduation from the four-year college was in the spring of 1967. By action of the Northwest Association of Secondary and Higher Schools in November, 1966, Boise College was accorded "Candidacy for Membership," constituting an interim accreditation for three years.

To meet the educational needs of men and women of all ages Boise College offers a junior college division with two-year courses of study, including an Area Vocational-Technical School; and four-year curricula leading to the baccalaureate degree.

The 1967 State Legislature voted for the integration of Boise College into the state system of higher education to be effective January 1, 1969. Funds have been appropriated, plans for the integration are under way, and at that time the name of our educational institution will become Boise State College.

## PHILOSOPHY OF THE COLLEGE

The pursuit of knowledge today must go far beyond the mere acquisition of facts. The College seeks through its courses and in conjunction with its guidance program to provide students with the intellectual tools necessary to develop their talents to the fullest potential and to become useful members of society. It also attempts to give students a general knowledge of the heritage and civilization of the modern world, and of America in particular; an appreciation of the interdependence of the various fields of human knowledge; and an intensive knowledge of some special field and/or skill.

The College attempts to provide for its students an environment which will promote desirable social adjustments, habits of personal and social responsibility, and an adequate sense of values. Students are encouraged to



develop qualities of leadership and good citizenship by participating in student affairs, cultural offerings and religious activities sponsored by the interfaith council. A close relationship between administration, faculty and students is characteristic of the College. The faculty members, with their diverse personalities and broad, varied backgrounds of academic, professional and practical experience, form the nucleus for enriching student life on campus.

### THE PLAN

Courses of study are planned to meet the needs of high school graduates who desire additional training or education for the following reasons:

1. To obtain a baccalaureate degree by enrolling in a full four-year course; or to obtain pre-professional background.
2. To obtain a general or specialized junior college education beyond high school.
3. To qualify for business or professional positions through additional education and training.
4. To obtain new skills or retraining in present work, in evening classes.
5. To earn upper division credits in evening classes, toward a four-year degree.

### THE PLANT

The tree-studded campus south of the Boise River, opposite Julia Davis Park, is bounded on the west by Capitol Boulevard and on the east by Broadway Avenue. It is traversed on the north by a picturesque river road at the end of which stands a small historic chapel which was moved on campus for posterity. College Boulevard is the southern boundary line of the campus.

The college is within walking distance of the downtown area, below the hill from the Union Station. Opposite the campus on the south are several religious centers of various denominations.

The **Administration Building** was completed in time to accommodate the 1940 class, and was followed that same year by the Heating Plant, Music Auditorium, Vocational Shop, Gymnasium and Student Union Building (now being used as the Music-Drama Annex).

The **Science Building** was completed in 1955 at a cost of approximately \$500,000 with a new wing added in 1966 at an additional cost of about \$335,000. The building houses the Life Science and Physical Science Divisions. It also provides excellent laboratories, class and seminar rooms and a 260-seat theater-type lecture room.

The **Liberal Arts Building** was completed in 1967 at a cost of approximately \$820,000 (including equipment). This welcome addition to the campus adds 33 classrooms, 7 Art Laboratories, 31 Faculty Offices, a Foreign Language Laboratory and a 322-seat lecture auditorium equipped with some of the most advanced training aids.

The **Library**, completed in 1964, is a modern, glass-fronted structure overlooking the campus road and river on the north, with a south terrace facing the new Liberal Arts Building. The Library accommodates about 400 students at reading tables and individual study desks. The book collection totals over 50,000 volumes, including about 2,700 reference volumes. Typing rooms and listening facilities are easily accessible, with approximately 1,100 phonorecords and 250 tapes available. The periodical department, centrally located on the second floor, receives nearly 500 periodicals and 15 newspapers. Microfilm readers are available for reading periodical and newspaper files on microfilm.

At present, the History and Education Departments and the Instructional Materials Center are also located on the second floor of the Library. Eventually, the total two-story structure, with the exception of space occupied by the Instructional Materials Center, will be utilized entirely by the Library.

The **Instructional Materials Center** (Educational Film Library) is owned cooperatively by the college and school districts in Southern Idaho and Eastern Oregon. The library now includes more than 1,100 films and 550 film strips valued at more than \$100,000. These materials are used extensively

not only in the College but in schools and by community organizations throughout the area. The latest projectors and other audio-visual equipment also are included in the Center.

**Campus School** is an elementary school built by the Boise Independent School District on the college campus. This unique arrangement provides student teaching for education majors, under the guidance of the college and Campus School instructors.

The **Music Auditorium** houses the \$40,000 Cunningham Memorial Organ, considered one of the finest of its kind in the Northwest. The building was remodeled in 1953 and seats 600 persons for college and community functions. The Music Department also is quartered here, including practice rooms and studios.

The **Music-Drama Annex** was used until 1967 as the Student Union Building. It was partially constructed through student fees and further financed by the Board of Trustees and a gift by H. W. Morrison. It provides expanded classrooms, practice, and recital facilities for music students; speech and drama laboratory facilities; and a radio broadcast studio.

The **Student Union Building**, opening in the fall of 1967 is a \$1,350,000 structure of modern design that is the social center of the campus. It includes a large snack bar with enough room for 500 students, a game room, a six lane bowling alley, a ballroom which may accommodate as many as 1,200 persons seated at a banquet, and a barber shop. Adequate parking is available. One of the largest college book stores in the intermountain area is located in the Student Union Building.

**Gymnasium and Physical Education building** constructed in 1955 is used extensively by the college and the community for events requiring a large seating capacity (up to 4,000). The gymnasium contains two full sized basketball floors and additional large areas adaptable for special training classes, testing and registration.

**Bronco Stadium**, completed in 1950, has a permanent seating capacity of 10,800 which frequently is augmented by temporary bleachers. Friends of the college promoted the stadium which not only serves as "Home of the Broncos" football team but for track events, outdoor pageants and spectacles, and for athletic events of high schools and other colleges.

**Vocational Buildings** are located on the southeastern section of the campus on Bellevue Avenue. Included are shops for auto mechanics, machine shop, welding, carpentry and auto body.

The **Technical Education Building**, completed in 1966, houses classes, laboratories, and offices of the rapidly expanding Vocational-Technical Education Program. Drafting-Design, Electronics, Office-Machine Repair, Horticulture, Nursing, and Dental Technician training are some of the activities conducted in this building.

**Women's Residence Halls, Morrison Hall and Driscoll Hall** were both completed in 1951 with identical construction of 48 single rooms and 15 double rooms. Central features are downstairs parlor and large recreation rooms. Each dormitory has 10 suites with small living room and lavatory facilities for the occupants. Laundry facilities also are available for the residents.

The new **Men's Residence Hall**, opening in the fall of 1967 is a \$925,000 structure designed to accommodate 300 students. This beautiful new addition to the campus includes a central unit that is air-conditioned and contains a carpeted lounge, TV room, recreation room, and Resident Director's apartment. Students are housed in two separate three-story units with twenty-four double rooms, two single rooms and a Resident Advisor's room on each floor.

A **Building Expansion Program** costing 3½ million dollars, from a one mill levy and matching Federal funds, was approved in April, 1965 by district voters. The new **Liberal Arts Building**, the addition to the **Science Building**, the new **Student Union Building**, the new **Men's Residence Hall** for 300, and an addition to the **Technical Education Building** have been constructed and will be ready for full use in the fall of 1967.



## CULTURAL ADVANTAGES

The College increasingly is becoming the hub of cultural activities for the area, with many events presented at no charge, or for a nominal attendance fee. The College Lyceum Committee sponsors a series of lectures and entertainment featuring outstanding public figures or artists on tour to which the public is invited.

Dramatic offerings by student actors are presented each season, including plays in French, Spanish and German given by language students.

A full calendar of musical offerings includes recitals, concerts of the a cappella choir and the college band (both of which go on tour each year), the BC-Community Symphony orchestra, and an annual Opera Workshop production.

As the state capital, Boise offers many additional advantages to the students who can observe first hand various governmental departments, where they frequently have an opportunity to work. The city is the hub of communications, with the largest daily newspaper in the state, two major television stations, two weekly newspapers and seven radio stations.

There are two modern hospitals, plus a renowned convalescent center. It is a city of churches, and civic organizations abound for both men and women.

Music opportunities for participants and audiences alike are here with a Philharmonic Symphony orchestra, the Community Concert series, in addition to several major musical show productions involving local talent given each year. There is an active Little Theatre group, an Art Association which sponsors an Art Gallery in Julia Davis Park, and a Historical Society in conjunction with the State Historical Museum also located in the Park, across the river from the college campus.

Boise Valley has a mild climate, only a few miles' drive to the mountains for abundant snow. Bogus Basin, the local ski area, is only 16 miles from the city. Family camping is a favorite recreation, with hunting and fishing practically at one's backdoor. Water sports are found at nearby Lucky Peak reservoir, Lake Lowell and many other recreation spots within a short drive of town.

## PETITIONS

Individuals or groups of students always have the privilege of petition. Academic petitions should be addressed to the Dean of Faculty. Other petitions should be directed to the appropriate administrative officer.

## ACCREDITATION

The College will continue its junior college division emphasizing a strong program in the academic, pre-professional, semi-professional, and vocational-technical programs of study. Boise Junior College is a member of the Northwest Association of Secondary and Higher Schools, and has been fully accredited by that organization since 1941. This accreditation continues as in the past with a re-evaluation accomplished in October 1966 by a visitation committee of the Northwest Association of Secondary and Higher Schools. This is part of the regular, periodic accreditation of all northwest colleges and universities which are members of the association.

Five to ten years is the maximum period of accreditation for any college or university in the Association. Boise Junior College received reaccreditation for a five year period in 1966. Boise College, as a new four year, degree granting institution was accorded "Candidacy for Membership," which constitutes an interim accreditation for three years. Upper division students and graduates will have their credits accepted by colleges and universities throughout the Northwest, and by reciprocity throughout the nation.

## HONORS

The Idaho Society of Professional Engineers selects a pre-engineering major to receive the honor of being the outstanding engineering student graduating from Boise College. The engineering faculty nominates candi-

dates for this honor. An individual plaque is given to the recipient, and his name is also inscribed on a plaque in the Science Building. The name of the student receiving this honor is announced at Commencement each year.

**SCHEDULES OF FEES AND CHARGES**

All of the fees, tuition, and other charges are due and payable at the time of registration each semester. Board and room charges may be paid in advance for each semester or arrangements may be made to pay in advance on a partial payment basis by consulting the Business Manager.

Veterans who plan to attend on the GI Bill of Rights under P. L. 550 or P. L. 894 must, upon registration, present their certificates of eligibility. Those under P. L. 894 unable to present a certificate of eligibility at the time of registration will be charged tuition and fees. Upon presentation of said certificate, complete refund will be made. Veterans qualifying under P. L. 550 will pay all charges at time of registration.

Ten or more credit hours for students not attending on the GI Bill will be considered a full schedule for purpose of calculating charges:

All fees, tuition and other charges are subject to change without notice.

**TUITION—BOISE COLLEGE:** (Upper Division 64 credit hours earned and over)

All students (per semester credit hour).....\$18.00 plus fees  
 If course taken for audit (per semester credit hour).... 10.00 plus fees

**Fees:**

|                                    |       |
|------------------------------------|-------|
| General Deposit (Refundable) ..... | 5.00  |
| Student Body Fee*.....             | 13.11 |
| General Course Fee.....            | 8.00  |
| Registration Fee .....             | 5.00  |
| Student Union .....                | 13.00 |
| Health and Medical.....            | 4.25  |
| Physical Education .....           | 3.75  |
| Student Health Insurance.....      | 9.89  |
| Athletic Fee .....                 | 10.00 |

\*Includes 3% Idaho Sales Tax

**TOTAL** \$72.00

**TUITION—JUNIOR COLLEGE DIVISION:**

**District Residents:**

\*Full-time Students (per semester).....\$50.00  
 Part-time Students (per semester credit hour)..... 5.00

**Ada County Residents:** (Residing outside of Boise Junior College District)

\*Full-time Students (per semester).....318.70  
 Part-time Students (per semester credit hour)..... 31.90

**Non-residents:** (Residing outside of Ada County)

\*Full-time students (per semester).....354.00  
 Part-time Students (per semester credit hour)..... 35.40

**Audit Fees:**

Any person auditing a class or classes will pay the following tuition:

|                                     |       |
|-------------------------------------|-------|
| District (per credit hour).....     | 10.00 |
| Ada County (per credit hour).....   | 30.00 |
| Non-resident (per credit hour)..... | 35.00 |

**Vocational Students:**

The State Board for Vocational Education cooperates with Boise Junior College District in financing training courses; therefore, full-time vocational students are considered residents providing they reside in Idaho.

\*Refer to page 35 for definition of a full-time student.

**ESTIMATED COST**  
(PER SEMESTER)  
**JUNIOR COLLEGE DIVISION**

|  | District<br>Residents | Ada<br>County<br>Residents | Outside<br>Ada County<br>In State | Out of<br>State |
|--|-----------------------|----------------------------|-----------------------------------|-----------------|
| Tuition .....  | \$50.00               | \$318.70                   | \$354.00                          | \$354.00        |
| General Deposit (Refundable).....  | 5.00                  | 5.00                       | 5.00                              | 5.00            |
| Student Body Fee*.....   | 13.11                 | 13.11                      | 13.11                             | 13.11           |
| General Course Fee.....  | 8.00                  | 8.00                       | 8.00                              | 8.00            |
| Registration Fee .....   | 5.00                  | 5.00                       | 5.00                              | 5.00            |
| Student Union .....  | 13.00                 | 13.00                      | 13.00                             | 13.00           |
| Health and Medical.....  | 4.25                  | 4.25                       | 4.25                              | 4.25            |
| Physical Education .....   | 3.75                  | 3.75                       | 3.75                              | 3.75            |
| Student Health Insurance.....  | 9.89                  | 9.89                       | 9.89                              | 9.89            |
| (Rate subject to annual review)  |                       |                            |                                   |                 |
| Athletic Fee .....   | 10.00                 | 10.00                      | 10.00                             | 10.00           |
| Sub-total .....  | \$122.00              | \$390.70                   | \$426.00                          | \$426.00        |
| If Student qualifies for County Tuition<br>Aid as provided by H.B. 121, as amend-<br>ed, Thirty-Ninth Session, Idaho State<br>Legislature, 1967, deduct..... |                       | \$200.70                   | \$236.00                          |                 |
| <b>TOTAL ESTIMATED COST</b>  | <b>\$122.00</b>       | <b>\$190.00</b>            | <b>\$190.00</b>                   | <b>\$426.00</b> |

\*Includes 3% Idaho Sales Tax

The above estimates do not include the cost of laundry, bedding, books, or personal items which vary greatly depending on the tastes, demands, or financial means of the individual student. In addition to the above, some courses may require special fees.

### INTERPRETATION OF COUNTY TUITION AID

**Idaho counties which will pay tuition aid:**

Ada (outside BJC district), Adams, Bannock, Bear Lake, Bingham, Boise, Bonneville, Butte, Canyon, Caribou, Clark, Clearwater, Custer, Elmore (Partial—Glenns Ferry School District is in Southern Idaho Junior College area), Franklin, Fremont, Gem, Idaho, Jefferson, Latah, Lemhi, Lewis, Madison, Nez Perce, Oneida, Owyhee (Partial — Glenns Ferry School District is in Southern Idaho Junior College area), Payette, Power, Teton, Valley, Washington, Yellowstone National Park.

**Students from other Idaho counties may qualify if they meet the following conditions:**

Excerpt from H.B. 121, as amended, Thirty-ninth Session, Idaho State Legislature, 1967

"Any student residing in the area of a county outside of a junior college district or in a county without a junior college district, who has been a resident of the county and state for not less than six (6) months continuously prior to the date of his first enrollment in a junior college, which residence may not be acquired while attending and enrolled in a junior college or other public school above the twelfth grade, may enroll in any junior college in the state, and the county of his residence shall pay that portion of his tuition as hereinafter set out. **Provided**, however, no student residing in a junior college area which has a junior college district may attend another junior college in the state, with the county of his residence paying a portion of that tuition, unless the student, if he be of legal age, or the parent or guardian of such student makes application to the board of trustees of the junior college district of the junior college area in which such student resides, which application shall request the attendance of such student at another junior college in the state, with the

county of his residence paying a portion of the tuition, and shall set forth the facts and reasons why such attendance should be authorized and, further, shall specify the junior college at which attendance is desired. Such board of trustees shall, not less than ten days before the date of such application is to be heard, enter its order for a hearing and give notice by mail to the applicant as to the time and place thereof. After hearing the same, if the Board of Trustees shall determine it to be in the best interest of such student to attend another junior college, with the county of his residence paying a portion of the tuition, and if the other junior college has agreed to accept such student, the board shall make and enter its order to that effect. Any such decision by the board of trustees of the junior college district may be appealed to and heard by the State Board of Education."

**Application Processing Fee:**

An Application Processing Fee of \$10.00 will be assessed beginning the fall semester 1968 for new enrollees to Boise College. (Non-refundable).

**General Deposit:**

Required of all students who enroll. Against this deposit will be charged such items as laboratory breakage, library fines, damage to or loss of college property, and indebtedness to the college. Students will receive a \$5.00 general deposit ticket during registration. The unused balance is refundable at the cashier's office upon official withdrawal from college or completion of academic work for the year..... \$5.00  
 (All veterans and vocation rehabilitation students will be required to make this deposit personally as the Veterans Administration and the State cannot be billed in this case).

**Student Body Fee:**

Sponsoring entertainment, dramatics, publication, glee club, and other activities the Student Executive Board decides to include (per semester) ..... 13.11

**Testing Fee:**

Students who have not taken the ACT tests on a regular national testing date will take the test during registration week. There will be no charge to those who have already taken the tests..... 8.00

**Registration Fee: (per semester)**

This fee (non-refundable) applies to all full-time and part-time students regardless of credit load ..... 5.00

**Change of Schedule Fee: (Changing or adding classes)** ..... 1.00

**General Course Fee: (per semester)**

Part time students will pay this fee at a rate of 80c per credit hour to a maximum of \$8.00 per semester..... 8.00

**Examination:**

At other than scheduled time (quizzes) ..... 1.00

\*Final Semester examination ..... 3.00

**Graduation Fee—Junior College:**

Non-Refundable (including cap and gown rental) ..... 5.00

**Graduation Fee—Baccalaureate Degree:**

Non-Refundable ..... 10.00

**Transcript:**

One sent free; extras, each ..... 1.00

(When two or more are ordered at the same time the first copy will be \$1.00 and additional copies 50 cents each)

**Student Union: Building Maintenance, Support and Construction:**

(Non-refundable) (per semester full time) ..... 13.00  
 per credit hour—part time (\$1.30)

**Bad Check Charge:**

Per check, if returned by bank as "insufficient funds," "no account," etc. .... 5.00

\*No early final examinations are allowed. Late final examinations can be arranged when extenuating circumstances exist—permission of the Dean of Faculty is required.

|  |                |       |
|--|----------------|-------|
| <b>Health and Medical:</b>   |                |       |
| (Per semester) .....   |                | 4.25  |
| <b>Student Health and Accident Insurance:</b>                                      |                |       |
| (Per semester) (Rate subject to annual review) .....                               |                | 9.89  |
| <b>Athletic Fee:</b>   |                |       |
| Sponsoring Inter-mural and Collegiate Athletic Programs .....                      |                | 10.00 |
| <b>Art Fees:</b>   |                |       |
| Ceramics, 16-125, 16-126 .....   | (Per semester) | 6.00  |
| Crafts, 16-121, 16-122 .....   | (Per semester) | 6.00  |
| Graphics, 16-109, 16-110 .....   | (Per semester) | 6.00  |
| <b>Music Fees:</b>   |                |       |
| Orchestra, 29-153 .....  | (Per semester) | 1.50  |
| A Capella Choir, 29-140 .....  | (Per semester) | 1.50  |
| Vocal Ensemble, 29-143 .....   | (Per semester) | 1.50  |
| Instrumental Ensemble, 29-150 .....  | (Per semester) | 1.50  |
| Band, 29-155 .....   | (Per semester) | 1.50  |
| <b>Music, Applied:</b>   |                |       |
| Piano, 30-151 .....  | (Per semester) | 45.00 |
| Class Piano, 30-150, one hour per week .....                                       | (Per semester) | 12.00 |
| Voice, 30-181 .....  | (Per semester) | 45.00 |
| Class Voice, 30-180, one hour per week .....                                       | (Per semester) | 12.00 |
| Organ, 30-131 .....  | (Per semester) | 45.00 |
| Violin, 30-171 .....   | (Per semester) | 45.00 |
| Cello, 30-121 .....  | (Per semester) | 45.00 |
| String Bass, 30-123 .....  | (Per semester) | 45.00 |
| Woodwind Instruments .....   | (Per semester) | 45.00 |
| Brass Instruments .....  | (Per semester) | 45.00 |
| Instrumental Techniques (for public school<br>majors) three lessons per week ..... | (Per semester) | 20.00 |
| <b>Music—Rental Fees:</b>  |                |       |
| Practice Room with Piano for one hour daily,<br>six days per week .....            | (Per semester) | 6.00  |
| Organ Rental, one hour per day .....   | (Per semester) | 27.00 |
| Key deposit for any music practice room .....                                      | (Per semester) | 1.00  |
| <b>Physical Education:</b>   |                |       |
| <b>Towel and Lock Fees:</b>  |                |       |
| 47-166, 47-167, 47-168, 47-169, 47-151, 47-176 .....                               | (Per semester) | 3.75  |
| <b>Swimming:</b>   |                |       |
| 47-177, 47-187, 47-152, 47-153 .....   | (Per semester) | 6.00  |
| <b>Vocational Course Fees:</b>   |                |       |
| Auto Body .....  | (Per semester) | 15.00 |
| Auto Mechanics .....   | (Per semester) | 15.00 |
| Carpentry .....  | (Per semester) | 15.00 |
| Dental Assisting .....   | (Per semester) | 15.00 |
| Drafting and Design .....  | (Per semester) | 15.00 |
| Electronics .....  | (Per semester) | 15.00 |
| Fashion Merchandising .....  | (Per semester) | 15.00 |
| Machine .....  | (Per semester) | 15.00 |
| Mid-Management .....   | (Per semester) | 15.00 |
| Office Machine Repair .....  | (Per semester) | 15.00 |
| Welding .....  | (Per semester) | 15.00 |

Other vocational courses not listed above will also carry the \$15.00 fee.

Students carrying less than 12 credits or 30 clock hours per week will pay \$1.50 per credit per semester on all shop courses.

#### Late Registration:

Students whose registration is not completed, including payments of all required fees, during the days specified as registration days will be charged a Late Registration fee of \$5 (Non-refundable).

**BOARD AND ROOM COST: By the Semester are:**

|                                       | Board     | Room     | Total    |
|---------------------------------------|-----------|----------|----------|
| <b>Morrison &amp; Driscoll Halls:</b> |           |          |          |
| Single .....                          | \$230.00* | \$125.00 | \$355.00 |
| Double .....                          | 230.00*   | 110.00   | 340.00   |
| <b>300-Man Dormitory:</b>             |           |          |          |
| Single .....                          | 230.00*   | 138.00   | 368.00   |
| Double .....                          | 230.00*   | 125.00   | 355.00   |
| <b>Falk House:</b> .....              | 230.00*   | 100.00   | 330.00   |

\*Includes 3% Idaho Sales Tax (\$6.70)

All fees, tuition and other charges are subject to change without notice.

**RESIDENCE**

"Residence" as used in the statutes and rules of Boise College means a student's permanent domicile. A student can have but one residence and such residence cannot be lost until another is gained. The statutes of the State of Idaho provide:

"A student in a junior college shall not be deemed a resident of the district or of the county or of the State of Idaho, unless such student shall have resided within said district, county or state, for at least six months continuously prior to the date of his first enrollment in said junior college, and no student who was not a resident of the district, county or state shall gain residence while attending and enrolled in said junior college. The residence of a minor shall be deemed to be the residence of his parents or parent or guardian."  
(Idaho Session Laws of 1963, Chapter 363, Section 10)

Section 32-101, Idaho Code, provides:

Minors defined. — Minors are:

- "1. Males under the age of twenty-one years of age."
- "2. Females under the age of eighteen years of age."

**REFUNDS**

Students who withdraw from the College during the first four weeks of a semester will be entitled to receive the following refund on tuition, general fees (except non-refundable) and student body fees (if activity ticket is returned) paid for that term:

If withdrawal is made within the first two weeks of a term, 75% will be refunded; after two weeks and within four weeks, 50%; after four weeks, no refund will be allowed.

Application for refund must be made to the Business Office at the time of withdrawal and within the time limits mentioned.

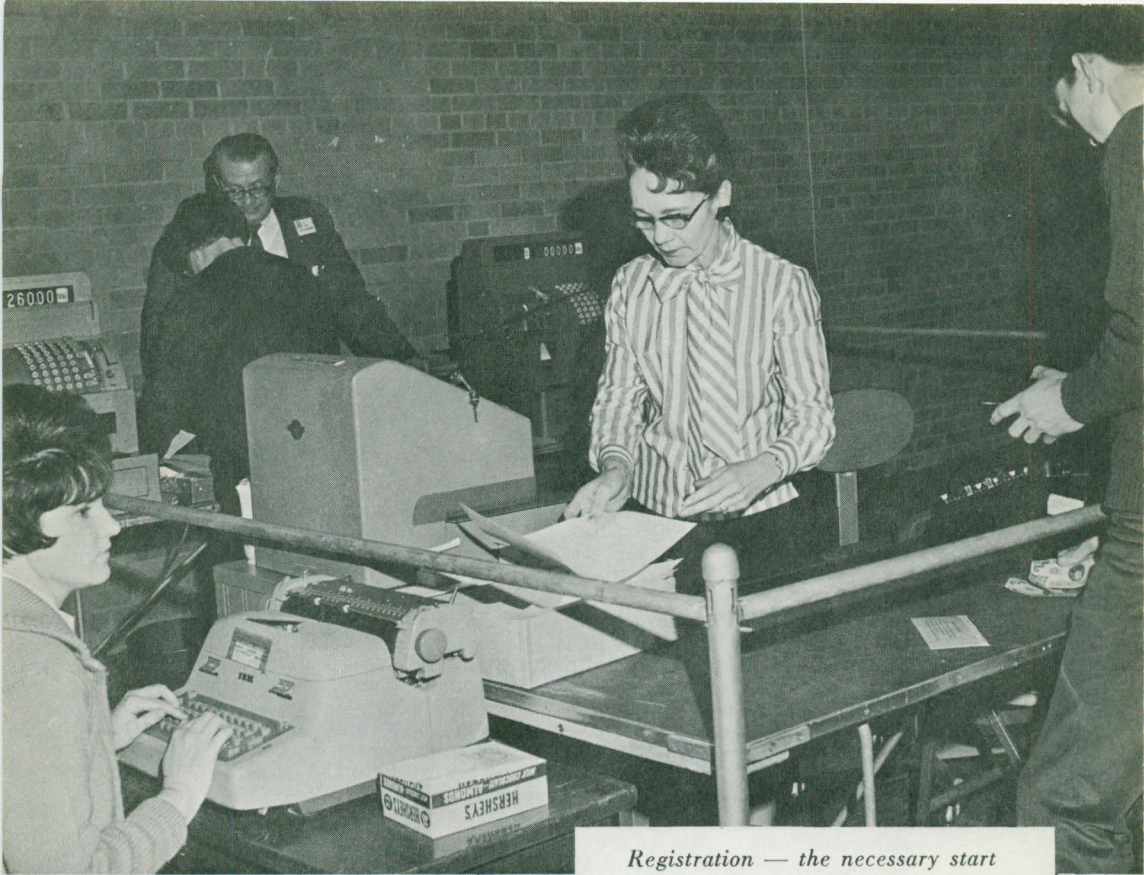
**DELINQUENT ACCOUNTS**

The cancellation of the registration and withholding of academic credit of any student with a delinquent account or an unsatisfactory financial relationship with the business office is authorized without notice if the student has been contacted. This regulation may be invoked at the discretion of the Business Manager in cases of disregard in the settlement of returned checks, loss of property or breakage in excess of the general deposit, dormitory or housing breakage, library fines and losses in excess of the general deposit, telephone toll charges, overdue notes, etc.

**AUDITING OF ACCOUNTS**

All funds for public purposes within the College and subject to the jurisdiction of either the College or the Associated Student Body and which are contributed to or collected by any student or faculty member shall be deposited with the Business Manager, subject to withdrawal upon written approval of the proper authorities. An accounting of all receipts and expenditures in the funds shall be made by those responsible for their collection immediately after they shall have been disbursed, this accounting to be audited by the Business Manager.





*Registration — the necessary start  
of a new semester.*

