

Western University
Scholarship@Western

Aboriginal Policy Research Consortium International (APRCi)

10-1-2012

Quality indicators of diabetes care: an example of remote-area Aboriginal primary health care over 10 years

Julia V. Marley

Carmel Nelson

Vicki O'Donnell

David Atkinson

Follow this and additional works at: <https://ir.lib.uwo.ca/aprci>

 Part of the [Health Services Administration Commons](#), and the [Other Public Health Commons](#)

Citation of this paper:

Marley, Julia V.; Nelson, Carmel; O'Donnell, Vicki; and Atkinson, David, "Quality indicators of diabetes care: an example of remote-area Aboriginal primary health care over 10 years" (2012). *Aboriginal Policy Research Consortium International (APRCi)*. 344.
<https://ir.lib.uwo.ca/aprci/344>

Quality indicators of diabetes care: an example of remote-area Aboriginal primary health care over 10 years

Julia V Marley
PgDipSc, PgDipPolSt, PhD,
Research Associate
Professor¹²

Carmel Nelson
MPH, DipBusMgt, FACRRM,
FRACGP,
Medical Director²

Vicki O'Donnell
DipBusMgt,
Chief Executive Officer³

David Atkinson
MB BS, MPH,
Medical Coordinator,¹ and
Medical Educator²

¹Rural Clinical School of
Western Australia,
University of
Western Australia,
Broome, WA.

²Kimberley Aboriginal
Medical Services Council,
Broome, WA.

³Derby Aboriginal
Health Service,
Derby, WA.

Julia.Marley@
rcswa.edu.au

MJA 2012; 197: 404–408
doi: 10.5694/mja12.10275

International and Australian studies show that well structured approaches to diabetes care can improve short-term and intermediate patient outcomes.^{1,2} While there are several long-term randomised controlled trials aimed at improving intermediate outcomes in people with diabetes,^{3,4} there is only one published study on the long-term evaluation of a continuous quality improvement (CQI) program in real-world settings of primary health care.⁵ Ten years after this CQI program was introduced, there was significant improvement in intermediate outcomes and a reduction in microvascular and macrovascular disease in patients with diabetes in Catalonia.⁵

In Australia, only limited, generally short-term, studies have been published on the effectiveness of real-life service approaches to improving diabetes control. One showed significant improvement in some intermediate outcomes for patients with diabetes in Far North Queensland following the introduction of the “Meriba Zageth for diabetes” plan.⁶

Derby is a small remote Western Australian town with a harsh seasonal climate, 230 km from the regional centre of Broome and 2350 km from Perth tertiary referral centres. The 2006 census rated the Derby–West Kimberley area as the fifth most disadvantaged in Western Australia.⁷ Recruitment and retention of skilled professionals in Derby is a constant challenge, with a number of key local services characterised by high staff turnover. Derby Aboriginal Health Service (DAHS) is an Aboriginal community-controlled health service that was established in 1998. Key characteristics of DAHS include whole-of-service involvement in internal CQI processes, use of electronic patient information and recall systems, and regional support and standardisation of care.

We aimed to report on long-term service activity and intermediate clinical

Abstract

Objectives: To describe service characteristics of Derby Aboriginal Health Service (DAHS) and document diabetes management activities and intermediate clinical outcomes for Aboriginal patients with type 2 diabetes.

Design, setting and patients: Retrospective audit of records for patients ≥ 15 years old who had a confirmed diagnosis of type 2 diabetes, received primary health care from DAHS for at least 6 continuous months between 1 July 1999 and 30 June 2009, resided in the Derby area and were not on renal replacement therapy.

Main outcome measures: Electronic records of blood pressure (BP), glycated haemoglobin (HbA_{1c}) level, weight, albumin–creatinine ratio, creatinine level or estimated glomerular filtration rate, lipid levels and smoking status during each audit year; and proportions of patients who met clinical targets for HbA_{1c}, BP and cholesterol.

Results: Over the 10 years, the proportion of clinical care activities undertaken according to regional protocols increased significantly, with very high levels recorded in the last 3 years (at least 70% of patients had each activity recorded). There were significant improvements in systolic BP, diastolic BP and cholesterol levels over the 10 years ($P < 0.001$ for all). In the final year, 69% of patients had at least half their BP measurements $\leq 130/80$ mmHg and 83% had median annual cholesterol levels of < 5.5 mmol/L. There were small improvements in HbA_{1c} levels that approached statistical significance ($P = 0.05$). In the final year, 34% of patients had median annual HbA_{1c} levels of $\leq 7.0\%$.

Conclusions: This study shows that diabetes monitoring and outcomes can be improved and maintained over a 10-year period in a well supported remote Aboriginal community-controlled health service setting.

outcomes for DAHS Aboriginal and Torres Strait Islander patients with type 2 diabetes.

Methods

This study covers 10 audit years, from 1 July 1999 to 30 June 2009. It includes Aboriginal and Torres Strait Islander patients seen at DAHS who had type 2 diabetes mellitus, were ≥ 15 years old, received primary care from DAHS for at least 6 continuous months, lived in or near Derby, and were not on renal replacement therapy.

The final study population was determined by carrying out a comprehensive retrospective review of paper and electronic records. During review of these records, the date of diagnosis of diabetes for each patient was confirmed as far as possible.

Data extraction and cleaning

In 2007, DAHS staff checked the accuracy of patients' electronic records against paper records. Results incorrectly recorded or not entered

into Project Ferret (Pen Computer Systems), a patient information and recall system, were corrected. From 2007, data entry was monitored more closely. At the end of 2009, data were extracted from Project Ferret and transferred into Excel 2003 (Microsoft). Outliers were identified and data entry errors were corrected. Fewer electronic creatinine results than expected were observed during the audit years 2005–06 and 2006–07 and further corrections, based on paper records, were made. The data were then imported into Stata, version 11 (StataCorp).

Service characteristics

The major activities and factors likely to have had a direct impact on the quality of care provided to patients with diabetes at DAHS are listed in Box 1.

Quality indicators of diabetes care

The occurrence of activities relating to diabetes management was assessed over the 10 audit years. Measures

1 Major activities and factors likely to have directly affected quality of care provided by DAHS to patients with diabetes, 1999–2009

- Aboriginal community-controlled health service, with stable governance by community-elected board of directors and executive managers
- After operating in the early stages on a limited start-up budget, DAHS secured a purpose-built facility in 2005 and has drawn incrementally increasing resources to support service growth and diversification in response to demand
- Electronic health information systems:
 - in addition to paper records, a patient information and recall system (Project Ferret) was used to capture key clinical data; it was also used for reporting and CQI purposes
 - data entry clerk changed infrequently, ensuring consistency over time
- Significant consistency of senior staff
- Specialist outreach services, including visiting general physicians, dietitians, podiatrists and diabetes educators
- Formal and informal teaching and upskilling incorporated into routine practice:
 - medical students hosted for their penultimate year, general practice registrar training, junior doctor placements, Aboriginal health worker student placements and nursing student placements
- CQI approaches based on a culture of organisational appraisal and improvement, encouraging review and reflection by staff at all levels, and embracing change in response to identified gaps
- Formalised CQI processes included:
 - brief participation in the Australian Primary Care Collaboratives program⁸ and the Audit and Best Practice for Chronic Disease project⁹
 - ongoing internal and external (Kimberley Aboriginal Medical Services Council) audit of service data
 - formalisation of regular audit process during the 2006–07 audit year, by introducing an internally developed standardised audit tool and routine audit process
- Regional support and standardisation of systems:
 - part of a regional collective of Aboriginal community-controlled health services
 - development and implementation across health sectors of the Kimberley Standard Drug List and evidence-based Kimberley Chronic Disease Therapeutic Protocols¹⁰

DAHS = Derby Aboriginal Health Service. CQI = continuous quality improvement. ◆

expected to be recorded at least 6 monthly (blood pressure [BP], glycosylated haemoglobin [HbA_{1c}] level, weight) were assessed over the last 6 months of each audit year (1 January to 30 June). Measures expected to be recorded annually (albumin-creatinine ratio [ACR], creatinine level or estimated glomerular filtration rate [eGFR], lipid levels, smoking status) were assessed over the full audit year.

Clinical outcome measures

Clinical outcome measures were assessed each audit year. Overall median HbA_{1c} and cholesterol levels were determined using medians for individual patients during each audit year. Also, the proportions of patients with median HbA_{1c} and cholesterol levels meeting recommended targets¹¹ were determined for each audit year. As the recommended target for BP includes meeting the target for both systolic (≤ 130 mmHg) and diastolic (≤ 80 mmHg) measurements, the proportions of patients with at least

half their electronic measurements meeting both targets were determined for each audit year.

Patients were classified as having proteinuria and/or kidney disease if they had at least two ACR results > 3.6 mg/mmol without obvious infection, creatinine or eGFR results suggestive of chronic kidney disease,¹⁰ and/or were assigned to a proteinuria or chronic kidney disease care plan.

Statistical analysis

A non-parametric test for trend across ordered groups was used to assess trend over time.¹² Analyses were performed using Stata, version 12 (Stata-Corp). $P < 0.05$ was considered statistically significant.

Ethics approval

Ethics approval was obtained from the Western Australian Aboriginal Health Information and Ethics Committee and exemption from ethics review was obtained from the Human Research Ethics Committee of the University of Western Australia.

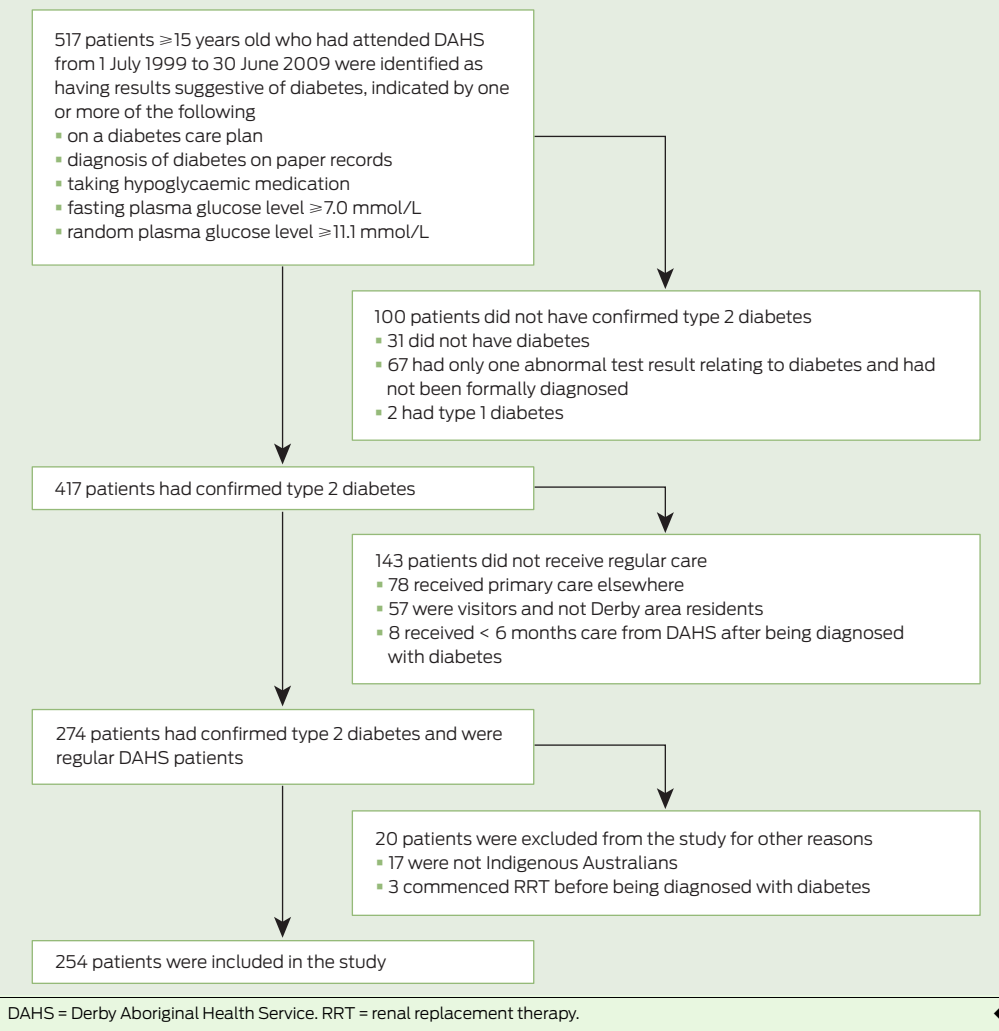
Results

After identifying 517 patients with results suggestive of diabetes, 263 were excluded for not meeting the selection criteria (Box 2). Participants who commenced renal replacement therapy, stopped receiving primary care from DAHS or died were not included after these events occurred.

The final study population of 254 patients contributed a total of 1502 patient-years of care. Of this patient population, 107 (42%) were diagnosed after becoming a regular patient at DAHS, 195 (77%) regularly attended DAHS (as determined by the clinic) from when they entered the study until they were excluded or the study finished, 166 (65%) were included in at least 5 audit years, 35 (14%) were included in all 10 years and 45 (18%) were included in both the first and last years. The median age of patients at the time of entering the study was 46 years (range, 15–84 years); 159 patients (63%) were female, 185 (73%) had or developed proteinuria and/or kidney disease, 12 (5%) commenced renal replacement therapy and 41 (16%) died.

Service activity for BP, HbA_{1c}, weight, ACR, creatinine level or eGFR, lipid levels and smoking status increased significantly over time ($P \leq 0.002$ for trend over 10 years; Box 3). Median annual systolic and diastolic BP values and cholesterol levels decreased significantly over time ($P < 0.001$ for trend over 10 years; Box 4). The proportion of patients who met currently recommended targets¹¹ for median annual cholesterol and who had at least half their recorded results for BP $\leq 130/80$ mmHg also significantly increased over time ($P < 0.001$ for trend over 10 years; Box 4). Improvements in glycaemic control over time approached statistical significance ($P = 0.05$ for trend over 10 years; Box 4). In the last year of the study, the proportions of patients who met the old targets of HbA_{1c} $< 7.0\%$ and BP $< 130/80$ mmHg were 33% and 53%, respectively. Previously reported data on care quality indicators and clinical outcome measures relating to diabetes care in other Australian populations are included in Box 3 and Box 4, respectively.^{1,6,8,9,13–19}

2 Selection process used to determine DAHS study population



Discussion

To our knowledge, this is the first published Australian study looking at 10 years of diabetes management in primary care at an individual health service. We showed significant and sustained improvements in health monitoring and intermediate outcomes at DAHS.

Improved care processes, improved control of BP and prevention of complications that result in hospitalisation have previously been demonstrated in Aboriginal community-controlled health services over short periods when adequate clinical support and appropriate management structures have been provided.^{2,13}

The main strength of our study is that we used all recorded results for patients over a 10-year period and analysed clinical outcomes according to clinical targets from current guide-

lines.¹¹ Comparisons can be made with other studies, but caution is required because of the different methods and clinical targets used. The Australian Primary Care Collaboratives program operates through “waves” of 20–200 practices working together over 18 months,⁸ while the Audit and Best Practice for Chronic Disease project randomly selected 30 patients with diabetes from each of 62 services and used the most recent value for each patient within 12 months of the audit.⁹ The currently recommended target for BP is $\leq 130/80$ mmHg,¹¹ but previously it was $< 130/80$ mmHg. In our study, this meant that the proportion of patients with BP complying with target values changed from 53% to 69% in the final year. Similar changes occurred in the Australian National Diabetes Audit and Benchmarking project (54% of patients with BP $\leq 130/80$ mmHg in

2009 compared with 38% of patients with BP $< 130/80$ mmHg in 2006).^{17,20} The change in HbA_{1c} target ($< 7.0\%$ to $\leq 7.0\%$) made less difference in our study (33% v 34% of patients meeting the respective targets in the final year).

Limitations of this study included underrecording. In the earlier years, this may have contributed to the trend of improvements over time. As part of the CQI processes at DAHS, staff checked the accuracy of the measures reported in this article and updated electronic records, but some bias due to underrecording in the earlier years is likely. Our data on the duration of diabetes may also be biased because of difficulties in determining when diabetes was diagnosed in patients who were diagnosed at other health services. This study was also limited to data that were available; important outcomes, such as hospital admissions and medication usage, were not recorded electronically and more sophisticated measures relating to quality of life were not collected.

Our results compare well with those of other Australian studies of patients with diabetes. In terms of the intermediate outcome measures that we examined, BP was better controlled than in other Australian studies, including mainstream general practice studies (69% v 28%–54%^{8,16,17}), and cholesterol levels were similar or better (83% v 53%–86%^{9,15–19}). Glycaemic control was near the best reported in Indigenous Australian studies (34% v 22%–32%^{1,6,9,14,15}) but not as good as has been reported in studies of mainstream general practice (37%–57%).^{8,18,19}

Despite the improvements we have shown, there is substantial room for further improvements in clinical outcomes. The focus on preventing or delaying kidney failure in the Kimberley may partly explain why BP control was particularly good in this study. Glycaemic control is considered more difficult to achieve compared with other measures⁶ and only small improvements in glycaemic control were evident in this study, although even small improvements can be clinically useful. Further investigation is planned to model HbA_{1c} measurements over time for individuals and determine factors that are likely to

3 Proportions of DAHS study population for whom diabetes management activities were recorded in the electronic patient and information recall system during the 10 audit years, and corresponding values from the final years of other studies

	Audit year										P*	Indigenous Australians, PHC†
	1999-00	2000-01	2001-02	2002-03	2003-04	2004-05	2005-06	2006-07	2007-08	2008-09		
Total no. of patients‡	582	816	603	699	808	982	943	1232	1349	1227		
No. of patients included in study	80	129	136	136	164	176	172	172	177	173		
Median time since diagnosis, at 30 June (years)	1.3	2.2	3.0	4.0	4.4	5.4	6.0	6.8	7.5	8.5		
Proportion of patients for whom activity was recorded												
Blood pressure‡	74%	77%	64%	71%	75%	74%	74%	81%	82%	80%	0.002	65%–83%
HbA _{1c} ‡	53%	60%	68%	66%	69%	66%	72%	75%	70%	74%	< 0.001	56%–73%
Weight‡	53%	58%	49%	45%	64%	61%	65%	75%	79%	74%	< 0.001	51%–74%
Albumin–creatinine ratio‡	45%	47%	51%	54%	77%	67%	65%	77%	79%	81%	< 0.001	50%–83%
Creatinine level or eGFR‡	68%	74%	72%	85%	83%	80%	75%	87%	87%	94%	< 0.001	69%–86%
Lipid levels‡	56%	62%	53%	67%	72%	68%	70%	80%	79%	91%	< 0.001	52%–88%
Smoking status‡	11%	45%	14%	48%	60%	49%	38%	70%	80%	85%	< 0.001	24%
All seven activities	0	19%	6%	14%	29%	22%	18%	47%	47%	50%	< 0.001	
Mean no. of activities recorded	2.9	4.2	3.6	4.1	4.9	4.3	4.3	5.3	5.4	5.5	< 0.001	

DAHS = Derby Aboriginal Health Service. PHC = primary health care. HbA_{1c} = glycated haemoglobin. eGFR = estimated glomerular filtration rate. * For trend over 10 years. † Australian Aboriginal and Torres Strait Islander patients treated in PHC settings.^{1,9,13,14} ‡ All DAHS patients 15 years of age who had at least one electronic blood pressure or weight measurement recorded. § Process recorded from 1 January to 30 June during each audit year. ¶ Process recorded from 1 July to 30 June during each audit year.

contribute to individuals attaining and maintaining good glycaemic control.

From 2012, reporting of national key performance indicators (nKPIs) is a requirement for Aboriginal community-controlled health services under the National Indigenous Reform Agreement.²¹ The nKPIs include the HbA_{1c} and BP measures for patients with diabetes that we included in our study. It is hoped that the use of nKPIs will result in comparable data from Aboriginal health services being produced.

Over the decade covered by our study, a number of policy changes were introduced at a national level which may have had an enabling

role for DAHS in chronic disease care for its patients. These include the introduction of Medicare reimbursement for comprehensive Aboriginal and Torres Strait Islander preventive health checks and for chronic disease management planning and follow-up,²² and access to medications at low or no cost for Aboriginal people in remote areas (section 100 of the *National Health Act 1953* [Cwlth]).²³

DAHS had regular changes in health staff and management, but it also had significant consistency in senior staff over the decade we studied. The service also had improving resources over the study period,

although resourcing started from a low base. DAHS maintained its community connections with a consistent board of directors, long-term employment of Aboriginal health workers and nurses, and a focus on genuine comprehensive primary health care for its patients.

Sustainability of chronic disease programs has previously been reported to be a major challenge in remote Aboriginal and Torres Strait Islander health settings.²⁴ This study shows that diabetes monitoring and outcomes can be improved and maintained over a 10-year period in a remote Aboriginal community-controlled health service setting.

4 Clinical outcome measures of DAHS study population and proportions of those with outcome values that met currently recommended targets during the 10 audit years, and corresponding values from the final years of other studies

	Audit year										P*	Indigenous Australians, PHC†	Australians, secondary‡	Australians, PHC‡
	1999-00	2000-01	2001-02	2002-03	2003-04	2004-05	2005-06	2006-07	2007-08	2008-09				
Median annual clinical outcome measures														
Systolic BP (mmHg)	135	134	130	128	124	120	120	120	120	120	< 0.001	128–130	130	134
Diastolic BP (mmHg)	85	80	81	80	80	80	78	75	74	75	< 0.001	78–80	75	78
HbA _{1c} (%; mmol/mol)	8.2, 66	8.7, 72	8.2, 66	7.7, 61	8.1, 65	8.3, 67	8.1, 65	8.0, 64	7.6, 60	8.0, 64	0.05	8.1–9.0	7.9	6.8–7.4
Cholesterol (mmol/L)	5.0	5.0	5.1	4.9	5.0	4.9	4.6	4.7	4.6	4.5	< 0.001	4.7–5.0	4.3	4.7
Proportion of study population with median values that met targets														
BP ≤ 130/80 mmHg‡	38%	46%	44%	53%	66%	66%	67%	75%	70%	69%	< 0.001		28%–54%	34%
HbA _{1c} ≤ 7.0% (≤ 53 mmol/mol)	26%	28%	34%	34%	31%	24%	32%	36%	39%	34%	0.05	22%–32%	30%–32%	37%–57%
Cholesterol < 4.0 mmol/L**	4%	12%	8%	22%	16%	18%	16%	21%	24%	25%	< 0.001	29%		22%
Cholesterol < 5.5 mmol/L††	64%	63%	71%	76%	73%	72%	76%	75%	81%	83%	< 0.001	65%–79%	80%–86%	53%–85%

DAHS = Derby Aboriginal Health Service. PHC = primary health care. BP = blood pressure. HbA_{1c} = glycated haemoglobin. * For trend over 10 years. † Australian Aboriginal and Torres Strait Islander patients treated in PHC settings.^{1,6,9,14,15} ‡ General Australian population treated in secondary care settings.^{16,17} § General Australian population treated in mainstream general practice settings.^{8,16,19} ¶ At least half of each participant's recorded measurements met the recommended target for both systolic and diastolic BP. ** Recommended for people with diabetes. †† Recommended for the general population.

Acknowledgements: This study was initiated and funded by DAHS as part of their CQI program, with in-kind contributions including independent analysis by the Rural Clinical School of WA, at the University of Western Australia, and the Kimberley Aboriginal Medical Services Council. We had full access to all the data (including statistical reports and tables) in the study. We thank staff at DAHS for their efforts in cleaning up the database used in this study. We thank Max Bulsara and Sharon Evans for expert statistical advice and Sophie Couzos and Ian Ring for critical reading of this article.

Competing interests: Carmel Nelson was the Senior Medical Officer (from 1999 to 2005) at DAHS. Vicki O'Donnell is the Chief Executive Officer (from 2002 to present) of DAHS.

Received 9 Feb 2012, accepted 22 Aug 2012.

- 1 McDermott RA, Schmidt BA, Sinha A, Mills P. Improving diabetes care in the primary healthcare setting: a randomised cluster trial in remote Indigenous communities. *Med J Aust* 2001; 174: 497-502.
- 2 Si D, Bailie RS, Togni SJ, et al. Aboriginal health workers and diabetes care in remote community health centres: a mixed method analysis. *Med J Aust* 2006; 185: 40-45.
- 3 Holman RR, Paul SK, Bethel MA, et al. 10-year follow-up of intensive glucose control in type 2 diabetes. *N Engl J Med* 2008; 359: 1577-1589.
- 4 Stratton IM, Adler AI, Neil HA, et al. Association of glycaemia with macrovascular and microvascular complications of type 2 diabetes (UKPDS 35): prospective observational study. *BMJ* 2000; 321: 405-412.
- 5 Mundet X, Cano F, Mata-Cases M, et al. Trends in chronic complications of type 2 diabetic patients from Spanish primary health care centres (GEDAPS study): ten year-implementation of St Vincent recommendations. *Prim Care Diabetes* 2012; 6: 11-18.
- 6 McDermott RA, McCulloch BG, Campbell SK, Young DM. Diabetes in the Torres Strait Islands of Australia: better clinical systems but significant increase in weight and other risk conditions among adults, 1999-2005. *Med J Aust* 2007; 186: 505-508.
- 7 Australian Bureau of Statistics, Australian Institute of Health and Welfare. The health and welfare of Australia's Aboriginal and Torres Strait Islander peoples 2005. Canberra: AIHW, 2005. (AIHW Cat. No. IHW 14.) <http://www.aihw.gov.au/publication-detail/?id=6442467754> (accessed Aug 2012).
- 8 Ford DR, Knight AW. The Australian Primary Care Collaboratives: an Australian general practice success story. *Med J Aust* 2010; 193: 90-91.
- 9 Si D, Bailie R, Dowden M, et al. Assessing quality of diabetes care and its variation in Aboriginal community health centres in Australia. *Diabetes Metab Res Rev* 2010; 26: 464-473.
- 10 Kimberley Aboriginal Medical Services Council, WA Country Health Service Kimberley. Kimberley chronic disease protocols. 2010. http://resources.kamsc.org.au/c_k_d_protocols.html (accessed Aug 2012).
- 11 Diabetes Australia, Royal Australian College of General Practitioners. Diabetes management in general practice. 17th ed. Melbourne: Diabetes Australia, 2011. <http://www.racgp.org.au/Content/NavigationMenu/ClinicalResources/RACGPGuidelines/Diabetesmanagement/201107diabetesmanagementgeneralpractice.pdf> (accessed Jun 2012).
- 12 Cuzick J. A Wilcoxon-type test for trend. *Stat Med* 1985; 4: 87-90.
- 13 McDermott R, Tulip F, Schmidt B, Sinha A. Sustaining better diabetes care in remote Indigenous Australian communities. *BMJ* 2003; 327: 428-430.
- 14 Bailie RS, Si D, Robinson GW, et al. A multifaceted health-service intervention in remote Aboriginal communities: 3-year follow-up of the impact on diabetes care. *Med J Aust* 2004; 181: 195-200.
- 15 Maple-Brown L, Cunningham J, Dunne K, et al. Complications of diabetes in urban Indigenous Australians: the DRUID study. *Diabetes Res Clin Pract* 2008; 80: 455-462.
- 16 Bryant W, Greenfield JR, Chisholm DJ, Campbell LV. Diabetes guidelines: easier to preach than to practise? *Med J Aust* 2006; 185: 305-309.
- 17 National Association of Diabetes Centres. Australian national diabetes information audit and benchmarking: final report ANDIAB 2009. Canberra, 2009. <http://www.health.gov.au/internet/main/publishing.nsf/Content/pq-diabetes-pubs-andiab09> (accessed Sep 2011).
- 18 Kemp TM, Barr EL, Zimmet PZ, et al. Glucose, lipid, and blood pressure control in Australian adults with type 2 diabetes: the 1999-2000 AusDiab. *Diabetes Care* 2005; 28: 1490-1492.
- 19 Zwar NA, Hermiz O, Comino EJ, et al. Do multidisciplinary care plans result in better care for patients with type 2 diabetes? *Aust Fam Physician* 2007; 36: 85-89.
- 20 National Association of Diabetes Centres. Australian national diabetes information audit and benchmarking: final report ANDIAB 2006. Canberra, 2007. <http://www.health.gov.au/internet/main/publishing.nsf/Content/pq-diabetes-pubs-andiab06> (accessed Sep 2011).
- 21 Aboriginal Medical Services Alliance of the Northern Territory. OATSIH reporting reforms: reporting of national key performance indicators (nKPIs). 2011. http://www.amsant.org.au/documents/article/94/factsheet5_reportingnKPIs.pdf (accessed Aug 2012).
- 22 Department of Health and Ageing. History of key MBS primary care initiatives 1999-2010. <http://www.health.gov.au/internet/main/publishing.nsf/Content/mbsprimarycare-History> (accessed Jul 2012).
- 23 National Aboriginal Community Controlled Health Organisation. Pharmaceutical access. <http://www.naccho.org.au/activities/pharmaceutical.html> (accessed Jul 2012).
- 24 Hoy WE, Kondalsamy-Chennakesavan SN, Nicol JL. Clinical outcomes associated with changes in a chronic disease treatment program in an Australian Aboriginal community. *Med J Aust* 2005; 183: 305-309. □