

1985

The General Non-Equivalence of Tariffs and Import Quotas

James R. Melvin

Follow this and additional works at: https://ir.lib.uwo.ca/economicscsier_wp

 Part of the [Economics Commons](#)

Citation of this paper:

Melvin, James R.. "The General Non-Equivalence of Tariffs and Import Quotas." Centre for the Study of International Economic Relations Working Papers, 8535C. London, ON: Department of Economics, University of Western Ontario (1985).

ISSN 0228-4235
ISBN 0-7714-0693-2

THE CENTRE FOR THE STUDY OF INTERNATIONAL ECONOMIC RELATIONS

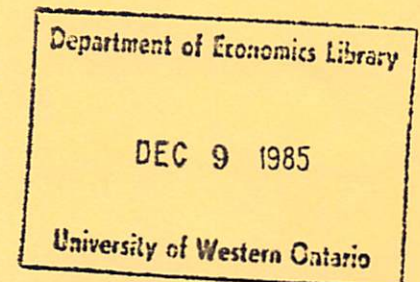
WORKING PAPER NO. 8535C

THE GENERAL NON-EQUIVALENCE OF
TARIFFS AND IMPORT QUOTAS

James R. Melvin

This paper contains preliminary findings from research work still in progress and should not be quoted without prior approval of the author.

DEPARTMENT OF ECONOMICS
THE UNIVERSITY OF WESTERN ONTARIO
LONDON, CANADA
N6A 5C2

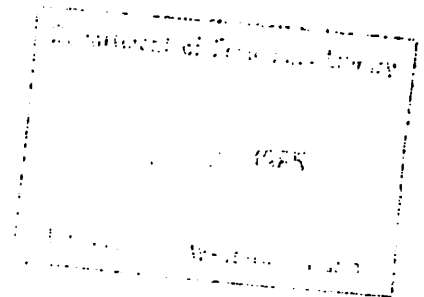


**THE GENERAL NON-EQUIVALENCE OF
TARIFFS AND IMPORT QUOTAS**

James R. Melvin

Department of Economics
University of Western Ontario
London, Canada

November 1985



THE GENERAL NON-EQUIVALENCE OF
TARIFFS AND IMPORT QUOTAS

It is now well known that in a world which is not perfectly competitive, tariffs and quotas are not equivalent. Bhagwati (1965) showed that in the presence of monopoly the effects of tariffs and quotas could be quite different, and this argument was extended by Shibata (1968) and Bhagwati (1968). It is also well known that in the presence of uncertainty or if there are changes in the economy such as growth or price fluctuations tariffs and quotas may produce different results (see Fishelson and Flatters (1975) and Young (1979)). Rodriguez (1974) has also shown that tariffs and quotas produce different final equilibria if there is retaliation. In particular retaliatory behaviour with quotas will always lead both countries towards the zero trade position whereas retaliation with tariffs may lead to an equilibrium in which trade exists. Falvey (1975) has shown that, even in a perfectly competitive world, if the foreign offer curve is inelastic, some tariffs cannot be duplicated by an import quota.

What does not seem to be generally recognized is that even in the static, perfectly competitive world tariffs and import quotas are never equivalent if both countries pursue restrictive trade practices. This can be illustrated by reference to Figures 1 and 2. The standard offer curve equilibrium is shown in Figure 1 where O_h and O_f are the offer curves for countries H and F respectively. The free trade equilibrium is at A with prices P. If both countries impose tariffs the offer curves could shift to O_{ht} and O_{ft} with a new equilibrium at B.¹

The question now is whether this tariff equilibrium, B, could be generated by import quotas. In Figure 2 the same offer curves and equilibrium

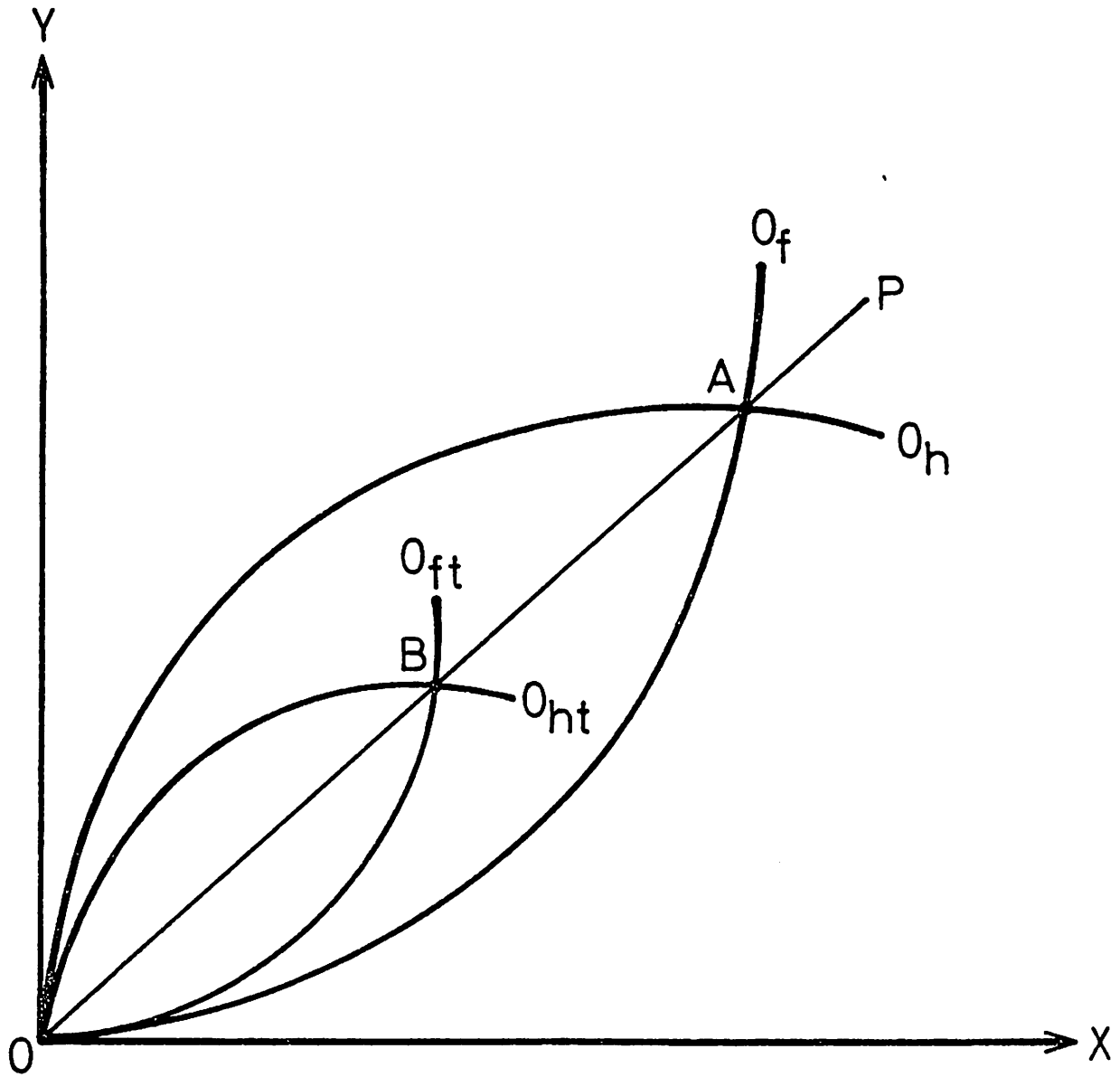


FIGURE 1

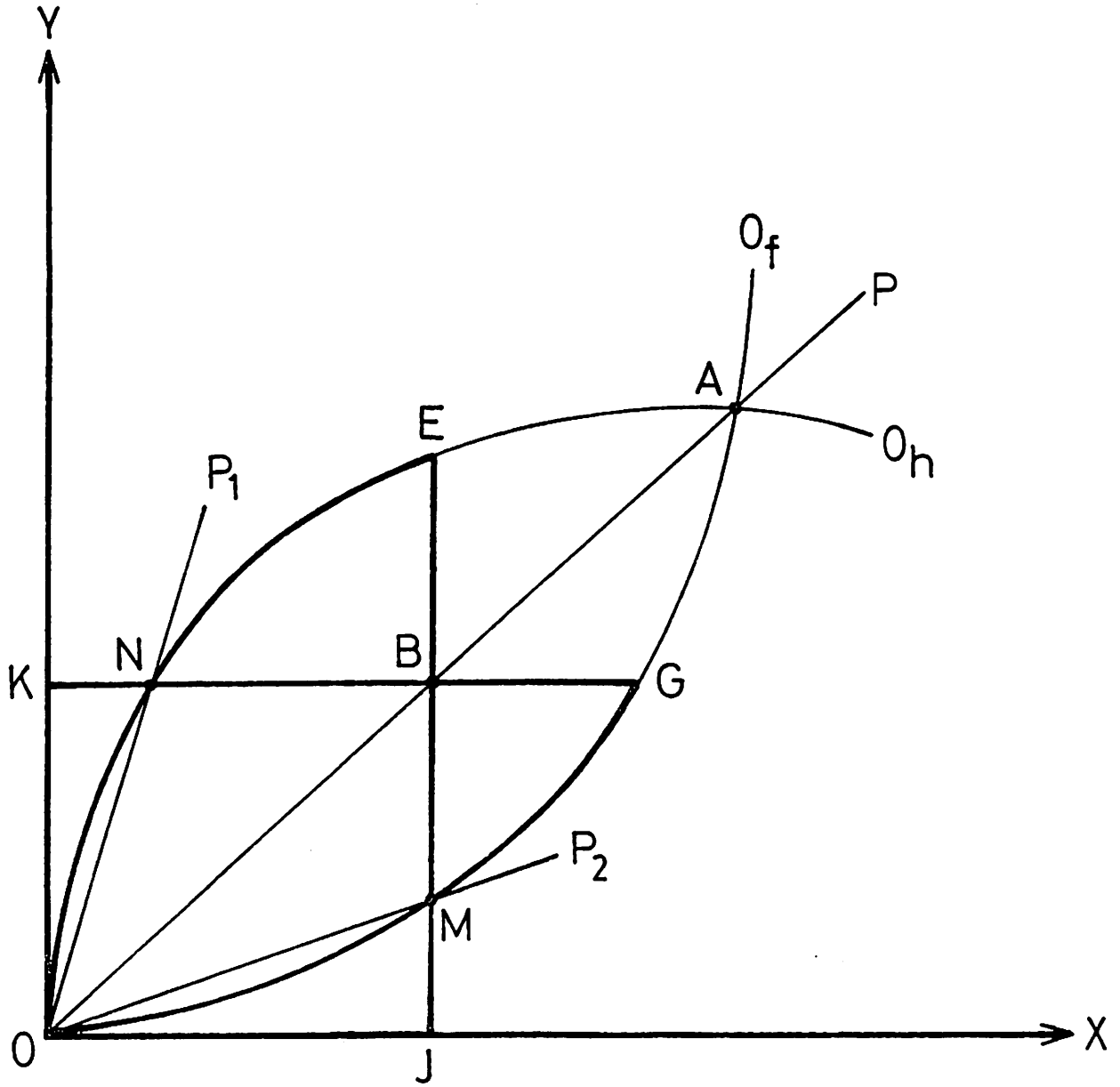


FIGURE 2

price line are shown, and now OJ and OK are the import quotas imposed by countries H and F respectively. The offer curves for the two countries have now become ONEJ for country H and OMGK for country F. While B, the interior intersection of these two offer curves, is in equilibrium it is unstable and therefore could not be sustained. This unstable equilibrium is bounded by the two stable equilibria N and M which are associated with equilibrium prices P_1 and P_2 respectively. Which of these two equilibria will prevail depends on which country imposes the quota first. Note that only one quota can be effective and the effective quota will be the first one imposed.

It is clear that the argument just presented applies equally well for any pair of tariffs imposed by the two countries. None of the equilibria associated with tariffs by both countries can be reproduced by import quotas. It is interesting to note that while any point in the lens-shaped area OEAG can be generated by an appropriate choice of tariffs only the boundary of this set can be generated by import quotas. Of course with tariffs in both countries none of the boundary points are possible in a tariff regime. Thus the feasible sets of equilibria for the tariff and quota cases are disjoint.

The fact that no tariff equilibria can be duplicated by import quotas depends on the fact that tariffs have been assumed to exist in both countries. If only one country imposes a tariff then all equilibrium points will be located along the offer curve of the other country, or in other words, will be on the boundary of the set OEAG. It is therefore only in the special case where only one country is assumed to have a tariff that import quotas and tariffs are equivalent.

In numerical general equilibrium analysis it is often difficult to quantify the effects of quotas and other non-tariff barriers to trade. One approach

which is sometimes used is to calculate the tariff equivalents of such trade restrictions and to use these in the calculations. The analysis here suggests that such an approach may result in serious misspecifications of the model.

In the preceeding we have been careful to specify that only import quotas are being considered. With export quotas, or as they are now more commonly called voluntary export restraints, the situation is quite different. Again consider Figure 2 but now assume that country F imposes a voluntary export restraint equal to OJ and that country H imposes a voluntary export restraint equal to OK. The offer curves for countries H and F become ONG and OME respectively, and this gives rise to equilibrium at point B. This equilibrium is stable and thus any tariff regime can be duplicated by a set of voluntary export restraints. Indeed voluntary export restraints can generate all the points both in the interior and on the boundary of the area OEAG.²

It is generally argued that voluntary export restraints are an inferior form of protection when compared either to tariffs or export quotas because voluntary export restraints involves a transfer of revenue to foreign countries which would otherwise be captured by the domestic economy. Again this argument is seen to be true only in the case where voluntary export restraints are in place in one country but not the other. The voluntary export restraints of Figure 2 produce exactly the same equilibrium as the import tariffs in Figure 1, although domestic prices will generally not be the same in these two cases. Furthermore, voluntary export restraints can be shown to be superior to import quotas in a variety of circumstances. Voluntary export restraints permit a much larger number of possible equilibrium points, and this may be important if countries wish to cooperate in setting their commercial policies. Suppose that tariffs cannot be used, perhaps for political reasons, and that the choice is

between quotas and voluntary export restraints. With the quotas of Figure 2 the only possible equilibrium prices are P_1 or P_2 , and in either case one of the two countries will be seriously disadvantaged by this form of trade restriction. With voluntary export restraints trade can be restricted but the initial terms of trade, P , can be retained so that neither country is subjected to a serious terms-of-trade deterioration. Perhaps the current use of voluntary export restraints is not as misguided a policy action as most economists have assumed.

It is now clear why Rodrigues (1974) found that retaliation through quotas produced different results than retaliation with tariffs. Optimal quota policy always involves a point on the boundary of the lens-shaped area OEAG of Figure 2, and thus retaliation will lead inexorably towards the origin. Optimal policy with tariffs will always imply an equilibrium in the interior of OEAG (as long as both countries have tariffs) and an equilibrium with positive trade is possible. Indeed, point B of Figure 1 could be an equilibrium with retaliation.

One might wonder why the instability of interior solutions with import quotas has not been noted in the earlier literature. One possible explanation is that much of the comparison between tariffs and quotas has been done using partial equilibrium analysis, where such problems do not reveal themselves. We have, then, another reminder that general equilibrium questions should be addressed using general equilibrium techniques.

FOOTNOTES

*I am indebted to Ian Wooton for helpful comments.

¹Point B is shown on the same price line P simply to avoid clutter in the diagram. Any point in the interior of the lens-shaped area formed by the intersection of the two offer curves is possible.

²One might be tempted to argue that voluntary export restraints (VER's) are the more general form of trade restriction, since they can reproduce any situation generated either by tariffs or import quotas. While technically correct this argument is true only because some VER's are not binding. Boundary points can only be obtained if only one VER is effective. The point is that while all tariffs are effective, all VER's are not.

REFERENCES

- Bhagwati, J.N. (1965). "On the Equivalence of Tariffs and Quotas," in Trade, Growth and the Balance of Payments: Essays in Honor of G. Haberler, edited by R. Caves et al., New York: Rand McNally.
- Bhagwati, J.N. (1968). "More on the Equivalence of Tariffs and Quotas," American Economic Review 58, 142-46.
- Falvey, R.E. (1975). "A Note on the Distinction Between Tariffs and Quotas," Economica 42, 319-326.
- Fishelson, G., and F. Flatters (1975). "The (Non) Equivalence of Tariffs and Quotas under Uncertainty," Journal of International Economics 5, 385-93.
- Rodriguez, C.A. (1974). "The Non-Equivalence of Tariffs and Quotas under Retaliation," Journal of International Economics 4, 295-98.
- Shibata, H. (1968). "A Note on the Equivalence of Tariffs and Quotas," American Economic Review 58, 137-142.
- Young, L. (1979). "Ranking Optimal Tariffs and Quotas for a Large Country under Uncertainty," Journal of International Economics 9, 249-64.

1981

- 8101C Markusen, James R. Factor Movements and Commodity Trade as Compliments: A Survey of Some Cases.
- 8102C Conlon, R.M. Comparison of Australian and Canadian Manufacturing Industries: Some Empirical Evidence.
- 8103C Conlon, R.M. The Incidence of Transport Cost and Tariff Protection: Some Australian Evidence.
- 8104C Laidler, David. On the Case for Gradualism.
- 8105C Wirick, Ronald G. Rational Expectations and Rational Stabilization Policy in an Open Economy
- 8106C Mansur, Ahsan and John Whalley Numerical Specification of Applied General Equilibrium Models: Estimation, Calibration, and Data.
- 8107C Burgess, David F., Energy Prices, Capital Formation, and Potential GNP
- 8108C DSJ Jimenez, E. and Douglas H. Keare. Housing Consumption and Income in the Low Income Urban Setting: Estimates from Panel Data in El Salvador
- 8109C DSJ Whalley, John Labour Migration and the North-South Debate
- 8110C Manning, Richard and John McMillan Government Expenditure and Comparative Advantage
- 8111C Freid, Joel and Peter Kwitt Why Inflation Reduces Real Interest Rates

1982

- 8201C Manning, Richard and James R. Markusen Dynamic Non-Substitution and Long Run Production Possibilities
- 8202C Feenstra, Robert and Ken Judd Tariffs, Technology Transfer, and Welfare
- 8203C Ronald W. Jones, and Douglas D. Purvis: International Differences in Response to Common External Shocks: The Role of Purchasing Power Parity
- 8204C James A Brander and Barbara J. Spencer: Industrial Strategy with Committed Firms
- 8205C Whalley, John, The North-South Debate and the Terms of Trade: An Applied General Equilibrium Approach
- 8206C Roger Betancourt, Christopher Clague, Arvind Panagariya CAPITAL UTILIZATION IN GENERAL EQUILIBRIUM
- 8207C Mansur, Ahsan H, On the Estimation of Import and Export Demand Elasticities and Elasticity Pessimism.
- 8208C Whalley, J. and Randy Wigle PRICE AND QUANTITY RIGIDITIES IN ADJUSTMENT TO TRADE POLICY CHANGES: ALTERNATIVE FORMULATIONS AND INITIAL CALCULATIONS
- 8209C DSU Jimenez, E. SQUATTING AND COMMUNITY ORGANIZATION IN DEVELOPING COUNTRIES: A CONCEPTUAL FRAMEWORK

- 8210C Grossman, G.M. INTERNATIONAL COMPETITION AND THE UNIONIZED SECTOR
- 8211C Laidler, D. FRIEDMAN AND SCHWARTZ ON MONETARY TRENDS - A REVIEW ARTICLE
- 8212C Imam, M.H. and Whalley, J. INCIDENCE ANALYSIS OF A SECTOR SPECIFIC MINIMUM WAGE IN A TWO SECTOR HARRIS-TODARO MODEL.
- 8213C Markusen, J.R. and Melvin, J.R. THE GAINS FROM TRADE THEOREM WITH INCREASING RETURNS TO SCALE.
- 8214C INDUSTRIAL ORGANIZATION AND THE GENERAL EQUILIBRIUM COSTS OF PROTECTION IN SMALL OPEN ECONOMIES.
- 8215C Laidler, D. DID MACROECONOMICS NEED THE RATIONAL EXPECTATIONS REVOLUTION?
- 8216C Whalley, J. and Wigle, R. ARE DEVELOPED COUNTRY MULTILATERAL TARIFF REDUCTIONS NECESSARILY BENEFICIAL FOR THE U.S.?
- 8217C Bade, R. and Parkin, M. IS STERLING M3 THE RIGHT AGGREGATE?
- 8218C Kosch, B. FIXED PRICE EQUILIBRIA IN OPEN ECONOMIES.

1983

- 8301C Kimbell, L.J. and Harrison, G.W. ON THE SOLUTION OF GENERAL EQUILIBRIUM MODELS.
- 8302C Melvin, J.R. A GENERAL EQUILIBRIUM ANALYSIS OF CANADIAN OIL POLICY.
- 8303C Markusen, J.R. and Svensson, L.E.O. TRADE IN GOODS AND FACTORS WITH INTERNATIONAL DIFFERENCES IN TECHNOLOGY.
- 8304C Mohammad, S. Whalley, J. RENT SEEKING IN INDIA: ITS COSTS AND POLICY SIGNIFICANCE.
- 8305C DSU Jimenez, E. TENURE SECURITY AND URBAN SQUATTING.
- 8306C Parkin, M. WHAT CAN MACROECONOMIC THEORY TELL US ABOUT THE WAY DEFICITS SHOULD BE MEASURED.
- 8307C Parkin, M. THE INFLATION DEBATE: AN ATTEMPT TO CLEAR THE AIR.
- 8308C Wooton, I. LABOUR MIGRATION IN A MODEL OF NORTH-SOUTH TRADE.
- 8309C Deardorff, A.V. THE DIRECTIONS OF DEVELOPING COUNTRIES TRADE: EXAMPLES FROM PURE THEORY.
- 8310C Manning, R. ADVANTAGEOUS REALLOCATIONS AND MULTIPLE EQUILIBRIA: RESULTS FOR THE THREE-AGENT TRANSFER PROBLEM.

- 8311C DSU Mohammad, S. and Whalley, J. CONTROLS AND THE INTERSECTORAL TERMS OF TRADE IN INDIA.
- 8312C Brecher, Richard A. and Choudhri, Ehsan U. NEW PRODUCTS AND THE FACTOR CONTENT OF INTERNATIONAL TRADE.
- 8313C Jones, R.W., Neary, J.P. and Ruane, F.P. TWO-WAY CAPITAL FLOWS: CROSS-HAULING IN A MODEL OF FOREIGN INVESTMENT.
- 8314C DSU Follain, J.R. Jr. and Jimenez, E. THE DEMAND FOR HOUSING CHARACTERISTICS IN DEVELOPING COUNTRIES.
- 8315C Shoven, J.B. and Whalley, J. APPLIED GENERAL EQUILIBRIUM MODELS OF TAXATION AND INTERNATIONAL TRADE.
- 8316C Boothe, Paul and Longworth David. SOME IRREGULAR REGULARITIES IN THE CANADIAN/U.S. EXCHANGE MARKET.
- 8317C Hamilton, Bob and Whalley, John. BORDER TAX ADJUSTMENTS AND U.S. TRADE.
- 8318C Neary, J. Peter, and Schweinberger, Albert G. FACTOR CONTENT FUNCTIONS AND THE THEORY OF INTERNATIONAL TRADE.
- 8319C Veall, Michael R. THE EXPENDITURE TAX AND PROGRESSIVITY.
- 8320C Melvin, James R. DOMESTIC EXCHANGE, TRANSPORTATION COSTS AND INTERNATIONAL TRADE.
- 8321C Hamilton, Bob and Whalley, John. GEOGRAPHICALLY DISCRIMINATORY TRADE ARRANGEMENTS.
- 8322C Bale, Harvey Jr. INVESTMENT FRICTIONS AND OPPORTUNITIES IN BILATERAL U.S.-CANADIAN TRADE RELATIONS.
- 8323C Wonnacott, R.J. CANADA-U.S. ECONOMIC RELATIONS--A CANADIAN VIEW.
- 8324C Stern, Robert M. U.S.-CANADIAN TRADE AND INVESTMENT FRICTIONS: THE U.S. VIEW.
- 8325C Harrison, Glenn, H. and Kimbell, Larry, J. HOW ROBUST IS NUMERICAL GENERAL EQUILIBRIUM ANALYSIS?
- 8326C Wonnacott, R.J. THE TASK FORCE PROPOSAL ON AUTO CONTENT: WOULD THIS SIMPLY EXTEND THE AUTO PACT, OR PUT IT AT SERIOUS RISK?
- 8327C Bradford, James C. CANADIAN DEFENCE TRADE WITH THE U.S.
Conklin, David. SUBSIDY PACTS.
Rugman, Alan M. THE BEHAVIOUR OF U.S. SUBSIDIARIES IN CANADA: IMPLICATIONS FOR TRADE AND INVESTMENTS.

1983

- 8328C Boyer, Kenneth D. U.S.-CANADIAN TRANSPORTATION ISSUES.
- 8329C Bird, Richard M. and Brean, Donald J.S. CANADA-U.S. TAX RELATIONS: ISSUES AND PERSPECTIVES.
- 8330C Moroz, Andrew R. CANADA-UNITED STATES AUTOMOTIVE TRADE AND TRADE POLICY ISSUES.
- 8331C Grey, Rodney de C. and Curtis, John. INSTITUTIONAL ARRANGEMENTS FOR U.S.-CANADIAN NEGOTIATIONS. PART I: CANADA-U.S. TRADE AND ECONOMIC ISSUES: DO WE NEED A NEW INSTITUTION? PART II: INSTITUTIONAL ARRANGEMENTS FOR MANAGING THE CANADA-U.S. ECONOMIC RELATIONSHIP.

1984

- 8401C Harrison, Glenn W. and Manning, Richard. BEST APPROXIMATE AGGREGATION OF INPUT-OUTPUT SYSTEMS.
- 8402C Parkin, Michael. CORE INFLATION: A REVIEW ESSAY.
- 8403C Blomqvist, Åke, and McMahon, Gary. SIMULATING COMMERCIAL POLICY IN A SMALL, OPEN DUAL ECONOMY WITH URBAN UNEMPLOYMENT: A GENERAL EQUILIBRIUM APPROACH.
- 8404C Wonnacott, Ronald. THE THEORY OF TRADE DISCRIMINATION: THE MIRROR IMAGE OF VINERIAN PREFERENCE THEORY?
- 8405C Whalley, John. IMPACTS OF A 50% TARIFF REDUCTION IN AN EIGHT-REGION GLOBAL TRADE MODEL.
- 8406C Harrison, Glenn W. A GENERAL EQUILIBRIUM ANALYSIS OF TARIFF REDUCTIONS.
- 8407C Horstmann, Ignatius and Markusen, James R. STRATEGIC INVESTMENTS AND THE DEVELOPMENT OF MULTINATIONALS.
- 8408C Gregory, Allan W. and McCurdy, Thomas H. TESTING THE UNBIASEDNESS HYPOTHESIS IN THE FORWARD FOREIGN EXCHANGE MARKET: A SPECIFICATION ANALYSIS.
- 8409C Jones, Ronald W. and Kierzkowski, Henryk. NEIGHBORHOOD PRODUCTION STRUCTURES WITH APPLICATIONS TO THE THEORY OF INTERNATIONAL TRADE.
- 8410C Weller, Paul and Yano, Makoto. THE ROLE OF FUTURES MARKETS IN INTERNATIONAL TRADE: A GENERAL EQUILIBRIUM APPROACH.
- 8411C Brecher, Richard A. and Bhagwati, Jagdish N. VOLUNTARY EXPORT RESTRICTIONS VERSUS IMPORT RESTRICTIONS: A WELFARE-THEORETIC COMPARISON.

- 8412C Ethier, Wilfred J. ILLEGAL IMMIGRATION.
- 8413C Eaton, Jonathon and Gene M. Grossman. OPTIMAL TRADE AND INDUSTRIAL POLICY UNDER OLIGOPOLY.
- 8414C Wooton, Ian. PREFERENTIAL TRADING AGREEMENTS - A 3xn MODEL.
- 8415C Parkin, Michael. DISCRIMINATING BETWEEN KEYNESIAN AND CLASSICAL THEORIES OF THE BUSINESS CYCLE: JAPAN 1967-1982
- 8416C Deardorff, Alan V. FIRless FIRwoes: HOW PREFERENCES CAN INTERFERE WITH THE THEOREMS OF INTERNATIONAL TRADE.
- 8417C Greenwood, Jeremy. NONTRADED GOODS, THE TRADE BALANCE, AND THE BALANCE OF PAYMENTS.
- 8418C Blomqvist, Ake and Sharif Mohammad. CONTROLS, CORRUPTION, AND COMPETITIVE RENT-SEEKING IN LDCs.
- 8419C Grossman, Herschel I. POLICY, RATIONAL EXPECTATIONS, AND POSITIVE ECONOMIC ANALYSIS.
- 8420C Garber, Peter M. and Robert G. King. DEEP STRUCTURAL EXCAVATION? A CRITIQUE OF EULER EQUATION METHODS.
- 8421C Barro, Robert J. THE BEHAVIOR OF U.S. DEFICITS.
- 8422C Persson, Torsten and Lars E.O. Svensson. INTERNATIONAL BORROWING AND TIME-CONSISTENT FISCAL POLICY.
- 8423C Obstfeld Maurice. CAPITAL CONTROLS, THE DUAL EXCHANGE RATE, AND DEVALUATION.
- 8424C Kuhn, Peter. UNION PRODUCTIVITY EFFECTS AND ECONOMIC EFFICIENCY.
- 8425C Hamilton, Bob and John Whalley. TAX TREATMENT OF HOUSING IN A DYNAMIC SEQUENCED GENERAL EQUILIBRIUM MODEL.
- 8426C Hamilton, Bob, Sharif Mohammad, and John Whalley. RENT SEEKING AND THE NORTH-SOUTH TERMS OF TRADE.
- 8427C Adams, Charles and Jeremy Greenwood. DUAL EXCHANGE RATE SYSTEMS AND CAPITAL CONTROLS: AN INVESTIGATION.
- 8428 Loh, Choon Cheong and Michael R. Veall. A NOTE ON SOCIAL SECURITY AND PRIVATE SAVINGS IN SINGAPORE.
- 8429 Whalley, John. REGRESSION OR PROGRESSION: THE TAXING QUESTION OF INCIDENCE ANALYSIS.
- 8430 Kuhn, Peter. WAGES, EFFORT, AND INCENTIVE-COMPATIBILITY IN LIFE-CYCLE EMPLOYMENT CONTRACTS.

- 8431 Greenwood, Jeremy and Kent P. Kimbrough. AN INVESTIGATION IN THE THEORY OF FOREIGN EXCHANGE CONTROLS.
- 8432 Greenwood, Jeremy and Kent P. Kimbrough. CAPITAL CONTROLS AND THE INTERNATIONAL TRANSMISSION OF FISCAL POLICY.
- 8433 Nguyen, Trien Trien and John Whalley. EQUILIBRIUM UNDER PRICE CONTROLS WITH ENDOGENOUS TRANSACTIONS COSTS.
- 8434 Adams, Charles and Russell S. Boyer. EFFICIENCY AND A SIMPLE MODEL OF EXCHANGE RATE DETERMINATION.
- 8435 Kuhn, Peter. UNIONS, ENTREPRENEURSHIP, AND EFFICIENCY.
- 8436 Hercowitz, Zvi and Efraim Sadka. ON OPTIMAL CURRENCY SUBSTITUTION POLICY AND PUBLIC FINANCE.
- 8437 Lenjosek, Gordon and John Whalley. POLICY EVALUATION IN A SMALL OPEN PRICE TAKING ECONOMY: CANADIAN ENERGY POLICIES.
- 8438 Aschauer, David and Jeremy Greenwood. MACROECONOMIC EFFECTS OF FISCAL POLICY.
- 8439C Hercowitz, Zvi. ON THE DETERMINATION OF THE EXTERNAL DEBT: THE CASE OF ISRAEL.
- 8440C Stern, Robert M. GLOBAL DIMENSIONS AND DETERMINANTS OF INTERNATIONAL TRADE AND INVESTMENT IN SERVICES.
- 8441C Deardorff, Alan V. COMPARATIVE ADVANTAGE AND INTERNATIONAL TRADE AND INVESTMENT IN SERVICES.
- 8442C Daly, Donald J. TECHNOLOGY TRANSFER AND CANADA'S COMPETITIVE PERFORMANCE.
- 8443C Grey, Rodney de C. NEGOTIATING ABOUT TRADE AND INVESTMENT IN SERVICES.
- 8444C Grossman, Gene M. and Carl Shapiro. NORMATIVE ISSUES RAISED BY INTERNATIONAL TRADE IN TECHNOLOGY SERVICES.
- 8445C Chant, John F. THE CANADIAN TREATMENT OF FOREIGN BANKS: A CASE STUDY IN THE WORKINGS OF THE NATIONAL TREATMENT APPROACH.
- 8446C Aronson, Jonathan D. and Peter F. Cowhey. COMPUTER, DATA PROCESSING, AND COMMUNICATION SERVICES.
- 8447C Feketeakuty, Geza. NEGOTIATING STRATEGIES FOR LIBERALIZING TRADE AND INVESTMENT IN SERVICES.
- 8448C Harrison, Glenn, W. and E.E. Rutstrom. THE EFFECT OF MANUFACTURING SECTOR PROTECTION ON ASEAN AND AUSTRALIA: A GENERAL EQUILIBRIUM ANALYSIS.

- 8520C Hercowitz, Zvi. THE REAL INTEREST RATE AND AGGREGATE SUPPLY.
- 8521C Davies, James and Michael Hoy. COMPARING INCOME DISTRIBUTIONS UNDER AVERSION TO DOWNSIDE INEQUALITY.
- 8522C Nguyen, Trien T. and John Whalley. COEXISTENCE OF EQUILIBRIA ON BLACK AND WHITE MARKETS.
- 8523C Clarete, Ramon and John Whalley. INTERACTIONS BETWEEN TRADE POLICIES AND DOMESTIC DISTORTIONS: THE PHILIPPINE CASE.
- 8524C Hamilton, Bob, Sharif Mohammad, and John Whalley. APPLIED GENERAL EQUILIBRIUM ANALYSIS AND PERSPECTIVES ON GROWTH PERFORMANCE.
- 8525C Huffman, Gregory W. THE LAGGED EFFECTS OF POLICY ON THE PRICE LEVEL.
- 8526C Laidler, David. FISCAL DEFICITS AND INTERNATIONAL MONETARY INSTITUTIONS.
- 8527C Goodfriend, Marvin. MONETARY MYSTIQUE: SECRECY AND CENTRAL BANKING.
- 8528C Nguyen, Trien T. and John Whalley. GENERAL EQUILIBRIUM ANALYSIS OF PRICE CONTROLS A TWO-SECTOR COMPUTATIONAL APPROACH.
- 8529C Heckman, James J. and V. Joseph Hotz. AN INVESTIGATION OF THE LABOR MARKET EARNINGS OF PANAMANIAN MALES: EVALUATING SOURCES OF INEQUALITY.
- 8530C Greenwood, Jeremy and Gregory W. Huffman. A DYNAMIC EQUILIBRIUM MODEL OF INFLATION AND UNEMPLOYMENT.
- 8531C Freeman, Scott. INSIDE MONEY, MONETARY CONTRACTIONS, AND WELFARE.
- 8532C Paderanga, Cayetano Jr. and Ian Wooton. A POSITIVE VIEW OF INFANT INDUSTRIES.
- 8533C St-Hilaire, France and John Whalley. A MICROCONSISTENT DATA SET FOR CANADA FOR USE IN REGIONAL GENERAL EQUILIBRIUM POLICY ANALYSIS.
- 8534C Whalley, John. OPERATIONALIZING WALRAS: EXPERIENCE WITH RECENT APPLIED GENERAL EQUILIBRIUM TAX MODELS.
- 8535C Melvin, James R. THE GENERAL NON-EQUIVALENCE OF TARIFFS AND IMPORT QUOTAS.

- 8501C
- 8502C Horstmann, Ignatius and James R. Markusen. UP YOUR AVERAGE COST CURVE: INEFFICIENT ENTRY AND THE NEW PROTECTIONISM.
- 8503C Gregory, Allan W. TESTING INTEREST RATE PARITY AND RATIONAL EXPECTATIONS FOR CANADA AND THE UNITED STATES.
- 8504C Kuhn, Peter and Ian Wooton. INTERNATIONAL FACTOR MOVEMENTS IN THE PRESENCE OF A FIXED FACTOR.
- 8505C Wong, Kar-yiu. GAINS FROM GOODS TRADE AND FACTOR MOBILITY.
- 8506C Weller, Paul and Makoto Yano. FUTURES MARKETS, REAL INCOME, AND SPOT PRICE VARIABILITY: A GENERAL EQUILIBRIUM APPROACH.
- 8507C Diewert, W.E. THE EFFECTS OF AN INNOVATION: A TRADE THEORY APPROACH.
- 8508C Ethier, Wilfred J. FOREIGN DIRECT INVESTMENT AND THE MULTINATIONAL FIRM.
- 8509C Dinopoulos, Elias. INSIDE THE BLACK BOX: (IN)TANGIBLE ASSETS, INTRA-INDUSTRY INVESTMENT AND TRADE.
- 8510C Jones, Richard, John Whalley, and Randall Wigle. REGIONAL IMPACTS OF TARIFFS IN CANADA: PRELIMINARY RESULTS FROM A SMALL DIMENSIONAL NUMERICAL GENERAL EQUILIBRIUM MODEL.
- 8511C Whalley, John. HIDDEN CHALLENGES IN RECENT APPLIED GENERAL EQUILIBRIUM EXERCISES.
- 8512C Smith, Bruce. SOME COLONIAL EVIDENCE ON TWO THEORIES OF MONEY: MARYLAND AND THE CAROLINAS.
- 8513C Grossman, S.J., A. Melino, and R.J. Shiller. ESTIMATING THE CONTINUOUS TIME CONSUMPTION BASED ASSET PRICING MODEL.
- 8514C Romer, Paul R. TAX EFFECTS AND TRANSACTION COSTS FOR SHORT TERM MARKET DISCOUNT BONDS.
- 8515C McCallum, Bennett T. ON CONSEQUENCES AND CRITICISMS OF MONETARY TARGETING.
- 8516C Dinopoulos, Elias and Ian Wooton. A NORTH-SOUTH MODEL OF INTERNATIONAL JUSTICE.
- 8517C Huffman, Gregory W. A DYNAMIC EQUILIBRIUM MODEL OF ASSET PRICES AND TRANSACTION VOLUME.
- 8518C Huffman, Gregory W. AN ALTERNATIVE VIEW OF OPTIMAL SEIGNIORAGE.
- 8519C Huffman, Gregory W. ASSET PRICING WITH HETEROGENEOUS ASSETS.