

Title	Practice links [Issue 56, February 2014]
Editor(s)	Cuskelly, Kerry
Publication date	2014-02
Original citation	Cuskelly, Kerry (ed.) 2014, Feb, "Practice Links", [Online]. http://www.ucc.ie/en/appsoc/aboutus/activities/pl/
Type of publication	Other
Link to publisher's version	http://www.ucc.ie/en/appsoc/aboutus/activities/pl/ Access to the full text of the published version may require a subscription.
Item downloaded from	http://hdl.handle.net/10468/1698

Downloaded on 2017-02-12T14:40:34Z



UCC

University College Cork, Ireland
Coláiste na hOllscoile Corcaigh



@PracticeLinks

Follow us on Twitter for daily updates!

Practice Links

Issue 56, February 2014



Inside

Continuing Professional Development

Pg. 2-11

Organisation Profile

Pg. 25

Community-Academic Research Links (CARL)

Pg. 12

Podcasts/Videos

Pg. 26-27

New publications and policy reports

Pg. 13-16

About Practice Links/Submissions/Subscriptions

Pg. 28

Call for Book Review

Pg. 16

Practice signposts: data sources to support your practice

Pg. 17-18

Research briefs, inc. Systematic reviews

Pg. 19-24

Next Edition - April 2014

Kerry, Kenneth, Steve and Eavan

Continuing Professional Development

FORTHCOMING CONFERENCE 2014

all BASPCAN events are CPD certified

BOOK NOW ON LINE <http://www.baspcan.org.uk/booking.php>

AS ALWAYS BASPCAN CAN OFFER BURSARIES FOR STUDENTS AND LOW INCOME OR PART TIME PRACTITIONERS WHERE FUNDING WITHIN THEIR ORGANISATION IS LIMITED.

WE ARE PLEASED TO ANNOUNCE THAT FUNDING IS AVAILABLE FOR THIS EVENT IF YOU ARE IN A POSITION TO SEND 2 OR MORE DELEGATES FROM THE SAME ORGANISATION.

ENGAGING WITH FATHERS: New directions in work with abusive men

Please contact us to discuss this further.
Monday 10 March 2014, Future Inn Hotel, Cardiff

Keynote speakers include: Prof Jonathan Scourfield, Prof Brid Featherstone, Stephanie Holt, Polly Baynes and Ben Jamal.

'There is increasing interest in finding ways for child protection practitioners to engage effectively with fathers who have in the past been described as 'invisible' in child protection. This includes working with men who may be abusive to their partners as well as their children.

This event will provide an opportunity for practitioners from the full range of services to develop their understanding of fathers' perspectives and to consider the means by which they can be included in assessment, planning and intervention that aims to safeguard children and young people.'

BASPCAN ARE IN THE PROCESS OF FINALISING NUMEROUS EVENTS TO BE HELD IN 2014

Our 2014 conferences will be held on subjects relevant to those working in the field of Child Protection and Safeguarding. Alongside our one day events BASPCAN have planned 'training roadshows' and localised BASPCAN branches hold numerous seminars.

We hope to have an international speaker to give 3 keynotes around the UK, presenting alongside renowned professionals, for training and educational purposes.

BASPCAN National Office
17 Priory Street, York, YO1 6ET
Tel: 01904 613605 Fax: 01904 642239
Email: conferences@baspcan.org.uk Web: www.baspcan.org.uk

Continuing Professional Development

BASPCAN 9TH CONGRESS

12-15 APRIL 2015

UNIVERSITY OF EDINBURGH, SCOTLAND, UK

'NEW DIRECTIONS IN CHILD PROTECTION AND
WELL-BEING: MAKING A REAL DIFFERENCE TO CHILDREN'S LIVES'

ANNOUNCEMENT

CALL FOR ABSTRACTS OPENS TODAY, 6th Jan 2014

<http://www.baspcan.org.uk/congress2015.php>

All information on how to apply, guidance, formats etc can be found at the above link.

FORTHCOMING CONFERENCES 2014

BOOK NOW ON LINE <http://www.baspcan.org.uk/booking.php>

AS ALWAYS BASPCAN CAN OFFER BURSARIES FOR STUDENTS AND LOW INCOME OR PART TIME PRACTITIONERS WHERE FUNDING WITHIN THEIR ORGANISATION IS LIMITED.



THIS IS MY CHILDHOOD: THERE WILL BE NO OTHER

The Importance of Early Years Intervention

This is a BASPCAN and DNA joint event

Friday 4 April 2014- Ashton Court, Bristol

Keynote Speaker: Right Hon. Dame Tessa Jowell MP

Dame Tessa Jowell is part of an All Party Parliamentary Group in partnership with UNICEF and the University of Northampton who will focus on the critical 1001 days in a child's life.

Their goal is get early childhood intervention firmly on the new post 2015 agenda for the United Nations with the UK taking a lead. It will examine ways to support families while reducing the causes of disadvantage to children in their very early years, including the ante-natal period. It will examine the impact of domestic violence, substance abuse and mental illness on early childhood.

Other speakers include Jane Evans, parenting specialist and trainer and author of 'How are you feeling today baby bear?' an early years domestic violence story book - published February 2014.

Further speakers to be announced shortly and information will be available on the BASPCAN website.

Special Rates apply for this event

Early Bird bookings (until 28 February 2014) is £99.

BASPCAN members and DNA current clients pay £99 throughout.

After the 28th February 2014 the fee is £130

Continuing Professional Development

CURRENT RESEARCH AND IMPLICATIONS FOR PRACTICE IN DOMESTIC VIOLENCE: A FOCUS ON MUTUAL VIOLENCE AND MALE VICTIMS

Monday 7 April 2014 , Thistle Hotel, Newcastle

The day is facilitated by Dr Nicola Graham-Kevan
Reader in the Psychology of Aggression, University of Central Lancashire
with keynote speaker Ian McNicholl

Domestic violence is frequently described as abuse against women and much research and practice has been aimed at understanding and responding to this issue. Whilst it is recognised that this is an important area of concern, research suggests that this conceptualisation is simplistic.

Although there are undoubtedly relationships where a man assaults his non-violent partner this is not the only type of violent relationship. Research suggests that many involve violence by both partners and that bidirectional violence may be the most likely to result in its escalation and injuries. It is also likely that children fair worse in such relationships as they lack a non-abusive parent to care for them. Another neglected area of domestic violence is that of male victims.

DISORGANISED ATTACHMENT AND CHILD PROTECTION: NEW WAYS OF ASSESSING RISK AND HELPING CHILDREN AND FAMILIES

Friday 6 June 2014, The Royal Scots Club, Edinburgh
Facilitated by Professor David Shemmings, University of Kent

The morning will include presentations by Prof. Shemmings on different aspects of contemporary theory and research relating to child protection practice.

Professor Shemmings will facilitate interactive sessions in the afternoon.

This conference will be particularly relevant to practitioners at all levels including their supervisors and managers in all key agencies and organisations working in the safeguarding children arena.

BASPCAN IS PLEASED TO ANNOUNCE THAT PROFESSOR DAVID FINKELHOR, DIRECTOR OF THE CRIMES AGAINST CHILDREN RESEARCH CENTER, UNIVERSITY OF NEW HAMPSHIRE, WILL BE FACILITATING THREE EVENTS IN NOVEMBER 2014. THEY WILL BE HELD IN IRELAND, SCOTLAND AND THE UK AND FURTHER DETAILS WILL FOLLOW SHORTLY.

TO REGISTER YOUR INTEREST PLEASE CONTACT US AS BELOW.

Email: conferences@baspcan.org.uk Web: www.baspcan.org.uk

Continuing Professional Development

Parents Plus Facilitator Training Schedule for Spring 2014 in Dublin as follows:

- 1) Parents Plus Early Years Programme: 3rd 4th and 5th March 2014
- 2) Parents Plus Children's Programme: 7th and 8th April 2014
- 3) Parents Plus Adolescents Programme: 28th and 29th April 2014
- 4) Parenting When Separated Programme: 12th March 2014
- 5) Working Things Out 2: 8th and 9th May 2014
- 6) Supervision / Consultation Workshops: 13th March 10am-1:30pm 2014

For full training details and booking form - www.parentsplus.ie/training

To download Parents Plus brochure click here: <http://www.parentsplus.ie/sites/default/files/PPBROCHUREWEBLOW.pdf>

The Parents Plus Programmes are evidence-based approaches and currently twelve independent studies attest to their effectiveness in clinical and specialist settings. For up to date information on Parents Plus Research go to www.parentsplus.ie/research

Social Care Ireland Annual Conference 2014*

“Social Care – Diversity in Practice”

Moran Silver Springs Hotel, Cork Tuesday, April 1st - Thursday, April 3rd

Keynote speakers on Attachment, Aftercare, Disabilities, Prostitution in Ireland, CPD.

Special presentations, workshops, poster displays, networking, sponsor presentations.

Attractive Early bird special rates, special student rates and day attendance rates

Brochure, Booking details on www.socialcareireland.ie

*Social Care Ireland is an amalgam of Irish Association of Social Care Workers (IASCW), Irish Association of Social Care Educators (IASCE) and Irish Association of Social Care Managers (IASCM)

Social Sciences ConneXions cordially invites you to the inaugural "Spring Series" showcasing the newly-established suite of research groups at Limerick Institute of Technology. These informal lunchtime talks are designed to encourage dialogue about new directions, issues and opportunities for collaborations within research. Researchers, teaching professionals, students, practitioners and anyone interested in joining the conversation are encouraged to attend; a light lunch will be provided.

Spring Series 2014 Schedule

Mon. February 24 - 1:00p.m. - Dr. Frank Houghton - Director - HEALR - Health and Social Research Group

"Research, Publishing & Ethics: Journeys in an Uncertain Terrain"

Mon. March 10 - 1:00p.m. - Jennifer Moran Stritch - Director - Loss and Grief Research Group

"Do the Irish Stare at the Sun? Research and Conversations on Grief and Death"

Mon. March 24 - 1:00p.m. - Lisa Scott - Director - Genders and Sexualities Research Group

"Genders and sexualities: effecting change in an Irish context"

The Spring Series lectures will take place in the Executive Boardroom at Limerick Institute of Technology, Moylish Campus.

For further information please contact jennifer.stritch@lit.ie or call 061-293-488.

On the 21st May 2014 *The Journal of Neighbourhood Revitalization* is staging a one day conference called 'Rural Revitalization' at the University College Dublin, which will focus on the range of issues that face the future development of rural towns and communities. 120 delegates are expected at the event, together with up to 20 speakers and 20 exhibitors. This will a great opportunity to listen to a range of key speakers on Rural Development and also learn and share good practice. We will also be launching an new exciting Journal at the Conference called the 'Journal of Rural Revitalization' which will become a focus for the development and promotion of good practice and research in rural development. All proceedings of the day will feature in the Journal. Details of the Conference and Journal can be found on the Twitter Feeds <https://twitter.com/CentreforRegen> and https://twitter.com/rural_regen

Continuing Professional Development

Mentalization-Based Treatment: Basic Training

As part of the global MBT Network, the Anna Freud Centre will be running a training in Mentalization-Based Treatment: Basic training in Dublin from 7th – 9th April 2014.

Link to course details: <http://www.annafreud.org/courses.php/105/mentalization-based-treatment-basic-training-dublin>

British Association for the Study and Prevention of Child Abuse & Neglect (BASPCAN) 9th NATIONAL CONGRESS



“New Directions in Child Protection and Well-Being: making a real difference to children’s lives”

SUNDAY 12th – WEDNESDAY 15th APRIL 2015
University of Edinburgh, Scotland, United Kingdom

The BASPCAN Congress is a prestigious national and international event for professionals, policy makers, academics and researchers. During the four days of Congress over two hundred presentations will be delivered to an audience of professionals from a range of disciplinary backgrounds and nationalities.

The Congress sub-themes are:

Innovations in prevention and early help

Developments in knowledge and service delivery (education, health, the law, social care and the voluntary sector) around physical, sexual and emotional abuse, and neglect

Learning from victims and survivors

New technology: threats to children, and its use in work with children and families

Emerging forms of, and contexts for, child maltreatment (e.g. sexual exploitation, trafficking, forced marriage, female genital mutilation and conflict)

Working with individuals and groups who present a risk to children

Novel research designs and methods

The Congress will provide the opportunity to present your work in oral paper sessions, through workshops and symposia, and in interactive poster sessions.

The Congress will take place at the University of Edinburgh, Scotland, close to the city centre and right in the heart of the city. Edinburgh is well served by low cost flights from across the United Kingdom, Ireland and Europe.

There are also direct flights from both Canada and the USA. The airport is just 8 miles from the city centre with low cost public transport available. Edinburgh is on the east coast railway line which links to all main stations and other airports such as London, Manchester and Glasgow.

Abstracts can be submitted at <http://www.baspcan.org.uk/congress2015.php> where you will also find additional information about Congress.

We hope that you will join us once again in sharing your work with a wide audience, and we look forward to welcoming you in April 2015.

PhD in Social Work Starts September 2014 @UCC



Drawing upon international models of excellence, the PhD in Social Work is the first of its kind in Ireland. We recognise that social workers are best placed to identify the research needs of the profession. Social workers will be introduced to innovative research methods and supported to complete a PhD thesis. Through a reflective model of teaching and learning, social workers will experience a programme that values peer-learning and dialogue in addition to research methods training and excellent tutorial supervision.

For social workers

You will make an important contribution to social work knowledge and will be in a strong position to pursue career opportunities nationally and internationally. These include careers in social work research, practice and policy development, management, education and CPD training.

For employers

Whilst on the programme, your staff member will generate evidence-based research important to your agency. Typically, students will engage with questions about:

- For whom and under what circumstances are programmes effective?
- How can models of practice employed internationally translate into an Irish setting to address needs here?
- What approaches to assessment are effective in identifying need, risk and resilience?
- How can an understanding of the lived experiences of service-users enhance social work responses to need and service-user engagement with services?
- Service development initiatives including professionalization, organisational change and leadership.

Duration and Fees

We recognise the need for flexibility. The programme takes a minimum of three years (full-time) or students can opt to complete in 6 years by enrolling part-time. Fees: €5,770/annum (€2,885/annum P/T).

For further information

Dr Eleanor Bantry White, e.bantrywhite@ucc.ie
+353 21 4902271

Dr Carmel Halton, chalton@ucc.ie +353 21 4902828

<http://www.ucc.ie/en/appsoc/>



@UCCAppSoc

Continuing Professional Development



OMEP

Organisation Mondiale pour l'Éducation Préscolaire
World Organisation for Early Childhood Education
Organización Mundial para la Educación Preescolar

OMEP Ireland:

President: Patricia O'Connor, School of Education UCC

Tel: 021-4902493 /E-mail: pat.oconnor@ucc.ie

OMEP Ireland is a Registered Charity. Charity No. CHY 14213

**OMEP International Conference will take place from
2nd – 5th July 2014 in University College Cork.**

The Conference Theme is

Children's Cultural Worlds and the sub-themes are:

- 1. Play and Creativity*
- 2. Friendships, Relationships and Identities*
- 3. Digital Childhood*
- 4. Influences on Early Learning*
- 5. Sustainable Development*
- 6. Cultural experiences and Heritage*

Call for Papers

**Submission date for Abstracts of 300 words is
17th January, 2014**

Abstracts may be submitted and presented in **English, French, Spanish or Irish**

An Abstract can be submitted for the following:

1. Individual paper presentation: Individual papers will be 20 minutes followed by 10 mins for questions and answers
2. Self-organised symposium: Groups may propose to organise 3 papers and a moderator around a common theme as a full session which will be scheduled for 1.5 hours.
3. Poster presentation: Selected posters will be displayed, and the presenters will have an opportunity to discuss these with delegates.
4. Short papers of 10 minutes duration for post graduate presenters.
5. Workshop: 1.5 hours – must specify minimum and maximum numbers & space requirement. All resources for the workshop must be provided by the presenter.

**You may submit your abstract by visiting the Ex Ordo abstract
submission system <http://omep2014.exordo.com/>
(you will be required to setup an account first)**



**3rd Biennial
International Symposium**

Decisions, Assessment, Risk and Evidence in Social Work

Tue 01 & Wed 02 July 2014

Templeton Hotel, Templepatrick, Northern Ireland

(convenient to Belfast International Airport)

Plenary Speakers:

- Professor Eileen Gambrill, Hutto Patterson Professor of Child and Family Studies, University of California at Berkeley, USA, internationally recognized for her work on critical thinking, decision making and related ethical issues, and evidence based practice.
- Dr Martin Webber, Reader in Social Work, University of York, UK, well-known for his passion for rigorous research in mental health social work, including application of evidence to practice decisions and professional knowledge-creation process.
- Mr David Carson, currently Reader, Institute of Criminal Justice Studies, University of Portsmouth, UK, an international speaker on the interface between law and risk in human services including the management of risk and professional decisions in organizations.

This third DARE symposium builds on the second symposium in July 2012 which brought together 110 delegates from nine countries including senior practitioners, managers, policy makers, researchers and those in education and training.

Further information: www.socsci.ulster.ac.uk/irss/dare2012/programme.html

Further information on DARE 2014 including a call for abstracts for oral presentations and posters will be added to our website over the coming months: www.socsci.ulster.ac.uk/irss/dare2014

If you would like your name to be added to the list for publicity email:

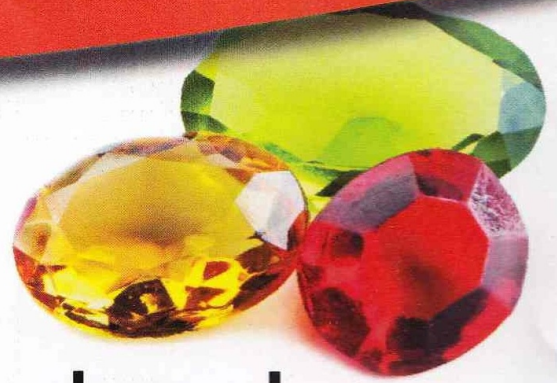
Mrs Sharon Lucas at: dare@ulster.ac.uk

Continuous Professional Development



for further information contact:
Davina Reidy
e: davinareidy@gmail.com

Play Therapy Conference Ireland



Regency Hotel Dublin
Saturday 29th March 2014

Theme: **Gems of Change** for Accessing & Utilizing
Inner Resources for Healing Childhood Trauma

**Keynote
Speaker:** Dr. Joyce Mills, PH.D

Early Bird Offer

of €130.00 for Keynote
Speaker only if you book before
15th January 2014.

Original Price €160.00

Inclusive of Tea/ Coffee and
Carvery Lunch on the Day



www.playtherapy.ie

Continuous Professional Development

In the context of savage cuts in public sector funding, ever increasing social work managerialism and stigmatisation of service users, this conference will provide an important opportunity to debate ways of developing networks of resistance necessary to defend social justice-based social work and oppose the politics of austerity.

SWAN is a network of social work practitioners, social care practitioners, academics, students and social welfare service users united in their concern that social work and social care activity is being undermined by managerialism and marketisation, by the stigmatisation of service users and by welfare cuts and restrictions. We believe that good social work is a worthwhile activity that can help people address the problems and difficulties in their lives.



This conference will mark the 10th anniversary of the publication of the "Manifesto for a new engaged practice", the founding document of the Social Work Action Network

Call for Papers

We particularly encourage workshops, presentations and papers on the following more specific themes and topics:

- The disability movement
- Defeating sexism and gender oppression
- Debating Government reviews on social work education and adult care
- Challenging the "troubled families" agenda
- Defeating the policies of austerity
- Anti-racist social work practice
- Challenging managerialism
- Working with asylum seekers and refugees
- In defence of youth and community work
- User-led groups and community campaigns
- Building alliances - challenging the strategy of divide and rule
- Radical social work education and practice
- Other subject areas relevant to the main conference themes

For more information in how to submit an abstract or a proposal for a thematic workshop visit

<http://www.socialworkfuture.org/conference-and-events/conference-2014/365-booking-open-conf-2014>

Plenary sessions will include presentations on the following themes:

- * Building Critical Alliances, 'Mending the Gap in Social Work'.
- * Fighting for good practice in times of austerity.
- * History and future challenges for radical social work.

Conference fees for 2014:

Conference Registration

£15 Students
£35 Waged
£65 Academics, trade union representatives
Free for service users and asylum seekers

Accommodation:

(There is only a limited number of university provided accommodation in this price. Please book early to avoid disappointment) - £40 (single en suite)

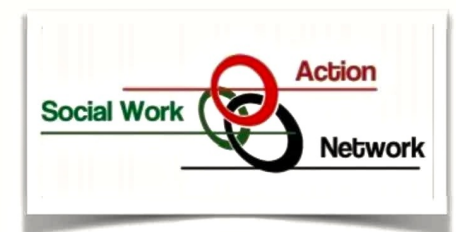
Conference Dinner and Social - £15

Click on the following link to register online
<https://www.dur.ac.uk/conference.booking/details/?id=259>



9th annual Social Work Action Network Conference

Social Work in a 'Cold Climate' : Fighting for Good Practice in Times of Austerity



Durham University

11-12 April 2014

Should you have any queries regarding booking and accommodation, please contact conferenceadministration.service@durham.ac.uk

If you have any questions about the content and themes of the conference please contact Vasilios Ioakimidis vas.ioakimidis@durham.ac.uk



Community-Academic Research Links (CARL)

CALL FOR RESEARCH PROJECTS

Are you a member of a community group, voluntary organisation, resident's association, NGO?

Do you need a small piece of research done, but don't have enough money or resources to carry it out at this time?

What is this about?

Community-Academic Research Links (CARL) invites non-profit voluntary or community organisations to suggest potential research topics that are important to them and could be collaboratively worked on with students as part of their course work. CARL is an initiative in UCC based on the "Science Shop" model and follows a 30 year European tradition with similar initiatives on-going in some of the highest ranked Universities in Europe. CARL has produced impressive and important pieces of research that have generated a huge interest outside the university walls and the project reports have even had an impact at government policy level.

We are seeking expressions of interest from groups who have ideas for a research project and would like to collaborate on their research idea with a UCC student.

How does it work?

As part of their academic course, students undertake a minor dissertation (between 10,000-30,000 words). In past years, students designed their own study and then contacted groups for permission to collect data. These projects serve to develop the research skills of the students; however, the research may not always answer the needs of community and voluntary groups.

In our model, the students undertake their studies, learn about research methods, data collection, ethics, literature reviews as usual; however, the major difference is that the research projects undertaken are explicitly **studies of issues identified by the community**. These are studies/research which the community identifies as important and need to be undertaken, but they cannot pay for it and/or do not have the expertise themselves to undertake the study.

How long does this take?

The typical time-scale for projects would be a) proposals submitted by groups by early February, b) review of proposals in early March by the CARL advisory group (comprised of UCC staff, students and representatives from the community and voluntary sector) to see which proposals are sufficiently developed and feasible for a student to undertake, and c) students begin their research in May (Master of Social Work) or October (other courses).

Projects must be **small** enough to be completed within the academic year, roughly 9-12 months. Groups normally receive their research report in July. Large research projects which require longer than a year to complete may be broken up into one or more smaller one-year projects for multiple students.

Where can I get more information?

Please visit our website to watch brief videos about CARL, to find out what it is like to participate, or to read past research project reports.

What if we have already completed a research project with CARL?

Community groups that have are currently involved, or previously completed a project, are welcome to apply again.

We look forward to hearing from you!



Before you make contact ...

1. Is your proposed project **small** enough to be undertaken as part of a student project?
2. Does your group come under the definition of a not-for-profit community and voluntary group?
3. Do you have a clear idea for a research project that, if undertaken, will have a wider benefit to society?
4. Read our research reports which are made available for free to the wider community on the web.
5. Please review the information on our website.
6. Contact Anna to discuss your idea further and to receive a copy of the application form.
7. Closing date is the 10th February 2014.

CONTACT US

Anna Kingston a.kingston@ucc.ie / 021-4903210

<http://carl.ucc.ie>



UCC

New publications and policy reports

Social care Institute for Excellence Mental Health Bulletin (January 2014)



social care
institute for excellence

To register for future bulletins go to: <http://www.scie.org.uk>

Link: <http://scie-mailing.org.uk/4O5-24MKC-E0XLJNN51/cr.aspx>

Report of the Social Inclusion Forum (September 2013)

by Department of Social Protection

This is the Report of the Social Inclusion Forum (SIF) 2013. SIF was established by the Government as part of the structures to monitor and evaluate Ireland's National Action Plan for Social Inclusion 2007- 2016 (NAP Inclusion). The theme of the 2013 Forum was 'Implementing the Social Dimension of Europe 2020'.

Link: <http://www.socialinclusion.ie/documents/2013-10-03SocialInclusionForumReportFinal.pdf>

Structural Funds 2014-2020: What Room for Social Inclusion and the Involvement of NGO's? (December 2013)

by European Anti-Poverty Network

This report assesses how the Partnership Principle is applied in the Partnership Agreements and Operational Programmes, i.e. how social NGOs have been actively involved in their drafting of these programming documents, which are key tools for implementing the new Structural Funds (2014-2020). It also evaluates how social inclusion and the poverty-reduction target is effectively made a priority in these processes by the managing authorities at national and regional levels.

Link: <http://www.eapn.eu/images/stories/docs/EAPN-position-papers-and-reports/2013-Structural-Funds-2014-2020-mapping-inclusion-participation.pdf>

Working Poor and Poor: EAPN Position Paper on In-Work Poverty (November 2013)

In-work poverty means that some people are still experiencing poverty, despite holding a job. From 2010 to 2013, EAPN has closely monitored and mapped the situation in Member States, as well as the effect of different policy options towards solving the situation, or making it worse. The position paper aims to set out EAPN's developing analysis of the issue of in-work poverty, and to contribute to the debate, highlighting the different situations across Europe, including the role of low pay, the structure and increased segmentation of the labour market, the role of benefit and taxation policies, and individual characteristics.

Link: <http://www.eapn.eu/images/stories/docs/EAPN-position-papers-and-reports/2013-EAPN-in-work-poverty-position-paper-web.pdf>



The IASW will hold an event to celebrate World Social Work Day on the morning of Friday 21st

March in Wynn's Hotel, Abbey Street, Dublin 1. The theme this year is:

Social and Economic Crises – Social Work Solutions

Further details of the event will be announced on www.iasw.ie

New publications and policy reports

Child and Family Policy and Practice Reports

by the UNESCO Child and Family Research Centre

A suite of documents have been developed by the UNESCO Child and Family Research Centre in NUI Galway. These documents have been developed in conjunction with the National Office for Children.

Link: <http://childandfamilyresearch.ie/publications/policy-practice>

Experiences of Social Workers in Primary Care in Ireland in *Social Work in Health Care*, 52:10, 930-946

by Muireann Ní Raghallaigh BSS PhD , Mary Allen BSocSc MSocSc PhD ,Rosemary Cunniffe DSW BSocSc MSocSc & Suzanne Quin BSS CQSW MA PhD (November 2013)

DOI:10.1080/00981389.2013.834030

Abstract

This article presents the findings of research conducted with social workers in primary health care teams in Ireland. Data from questionnaires and from a focus group were analysed. The findings draw attention to the nature of the role of the primary care social worker, including both the satisfying and challenging aspects of this role. It was evident that the participants liked the generic nature of their role and the fact that they worked with non-mandated clients. However, they encountered challenges related to resources, management structures, and interdisciplinary work. The findings shed light on an area of social work that has been under-researched.

To access as copy of this article, click on the following link <http://dx.doi.org/10.1080/00981389.2013.834030>

The Irish Community Development Law Journal, Volume 2 Issue 2, is now available

The Irish Community Development Law Journal is a peer reviewed online journal, published by the Northside Community Law & Mediation Centre, in Coolock, Dublin. The journal seeks to offer a platform for greater scholarly and academic interaction in the areas of social policy, law and community development. The journal also seeks to create channels of collaboration between academia, practitioners and any other interested parties.

To access the journal, go to: <http://www.nclc.ie/NCLMC-E-Journal-Issue-2-Volume-2.pdf>



Irish Youth Work Centre

Scene Magazine

The December issue of Scene Magazine has now been published and can be downloaded from the IYWC website. The theme of this edition was evidence in youth work and it features articles from practitioners on how to evidence youth work.

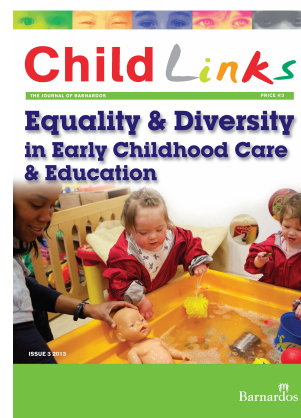
Link: <http://tinyurl.com/lhcdwol>

New publications and policy reports

ChildLinks (Issue 3, 2013) Equality and Diversity in Early Childhood Care and Education

Price: €3.00

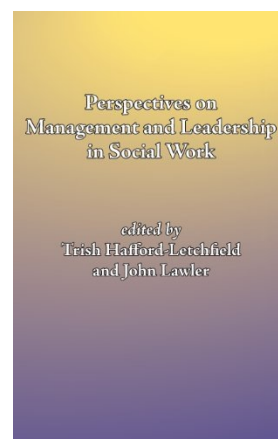
This issue of ChildLinks includes articles from Colette Murray, EDeNn; Clare County Childcare Committee; Louise Derman Sparks; Barnardos Early Intervention Service in Finglas; Mary Immaculate College, Limerick; and Marian Quinn, Cork Institute of Technology, among others. Hard copies can be ordered from our website www.barnardos.ie or by emailing resources@barnardos.ie



Perspectives on Management and Leadership in Social work by John Lawler and Trish Hafford-Letchfield (Editors)

Not a word written by an accountant.

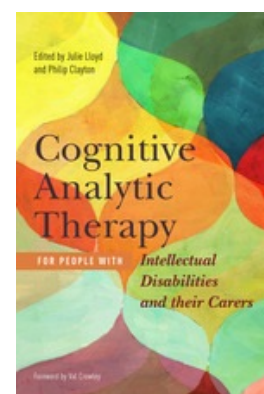
Perspectives on Management and Leadership in Social Work. This new title will interest anyone involved in managing social work services, or teaching this subject. All contributors have held roles in social work management, and write from real experience of doing the job. Much of the material in this field just offers the wisdom of general management or commercial consultancy. More details <http://www.whitingbirch.net/cgi-bin/indexer?product=9781861770882>



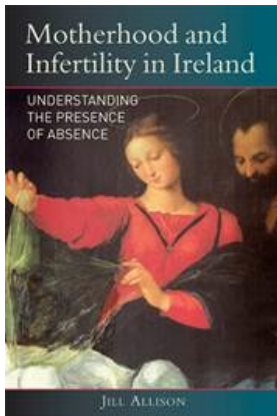
Cognitive Analytic Therapy for People with Intellectual Disabilities and their Carers by Julie Lloyd and Philip Clayton

With a variety of case examples and contributions from experienced clinicians, this book introduces Cognitive Analytic Therapy (CAT) in practical, user-friendly language, and for the first time guides readers on how to use it to with people with intellectual disabilities.

Link: http://www.jkp.com/catalogue/book/9781849054096?utm_medium=email&utm_campaign=UKROW++Cognitive+Analytic+Therapy+for+People+with+Intellectual+Disabilities+and+their



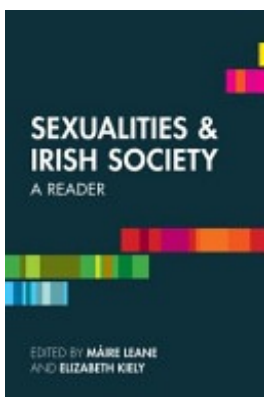
New publications and policy reports



Motherhood and Infertility in Ireland by Jill Allison

Through the lens of infertility, Jill Allison's book is a cultural account of shifting meanings of conception, fertility, motherhood and family in the current climate of changing Irish social life. This book portrays how the taken for granted associations between nature, reproduction, marriage, family and morality are also shaping the production of new kinds of reproductive knowledge and the use of reproductive technologies in Ireland-ISBN 978-178205-003-2, €39, £35, Hardback, 234 x 156mm, 272pp, 2014, Cork University Press.

There is a 20% discount to UCC staff and free postage to UCC addresses
You can order at: www.corkuniversitypress.com
List price €39 UCC price €31.20



Sexualities and Irish Society: A Reader by Marie Leane and Elizabeth Kiely

Draws on a variety of theoretical approaches and employs a range of analytic techniques to examine a wide range of topics relating to sexualities as they are socially constructed and regulated in Irish society today. The book is intended to be useful to high school, undergraduate, and postgraduate students in a range of disciplines where the study of sexualities is of importance. It is also intended as a useful resource for activists, campaigners, health workers, and service providers.

Publisher: Open Press, 2013
ISBN 1909518476, 9781909518476

Call for Book Review: Integrated Care in Ireland in an International Context: Challenges for Policy, Institutions and Specific Service User Needs by Tom O'Connor



This book has contributions by leading authors nationally and internationally writing on integrated health and social care systems. The book covers areas inter alia such as: discharge planning; integrated elder care services; integrated mental health services; the move towards rolling out integrated services for those with disabilities; appropriate health funding models; lessons on integrated care from Sweden, Canada and Northern Ireland; equal recognition before the law and challenges for social work, social care workers, primary care teams and GPs in the context of managing the integration of health and social care, inter-professional working and shared care planning.
Link: <http://integratedcareforirelandbook.blogspot.ie/2013/11/dublin-launch-book-integrated-care-for.html?sref=tw>

Please email Kenneth Burns at: k.burns@ucc.ie if you want to review this book.

Publisher: Oak Tree Press
ISBN: 9781781190807

Practice signposts: data sources to support practice



Practice signposts are permanent pages that will appear in every edition of *Practice Links*. The aim of this page is to provide sign posts to high quality research-informed databases. Some of the databases at a quick glance may seem too medical/health orientated, but also contain great resources to support social work and social care practice also.

Campbell Collaboration

The Campbell Collaboration (C2) helps people make well-informed decisions by preparing, maintaining and disseminating systematic reviews in education, crime and justice, and social welfare. Access to the database in the Republic of Ireland is free as the government of Ireland has purchased a [license](http://www.campbellcollaboration.org/). <http://www.campbellcollaboration.org/>

Cochrane Collaboration

The Cochrane Collaboration, established in 1993, is an international network of more than 28,000 dedicated people from over 100 countries. We work together to help health care providers, policy makers, patients, their advocates and carers, make well-informed decisions about health care, based on the best available research evidence, by preparing, updating and promoting the accessibility of [Cochrane Reviews](http://www.cochrane.org/). Our work is internationally recognised as the benchmark for high quality information about the [effectiveness](http://www.cochrane.org/) of health care.

<http://www.cochrane.org/>

National Institute for Health and Clinical Excellence (NICE) - NHS UK

The National Institute for Health and Clinical Excellence (NICE) provides guidance, sets quality standards and manages a national database to improve people's health and prevent and treat ill health. <http://www.nice.org.uk/> . Videocasts: <http://www.nice.org.uk/newsroom/videocasts/videocasts.jsp>. Podcasts: <http://www.nice.org.uk/newsroom/podcasts/index.jsp>

Health Intelligence Unit (HSE)

Health Intelligence is part of the Quality and Clinical Care Directorate within the Health Service Executive and is responsible for capturing and utilising knowledge to support decision-making to improve the health of the population. Website has links to HSE research, databases, facts (census etc.), publications and using evidence effectively. <http://www.hse.ie/eng/about/Who/PopulationHealth/HealthIntelligence/>

Evidence in Health and Social Care (NHS)

NHS Evidence is a service that enables access to authoritative clinical and non-clinical evidence and best practice through a web-based portal. It helps people from across the NHS, public health and social care sectors to make better decisions as a result. NHS Evidence is managed by the National Institute for Health and Clinical Excellence (NICE). <http://www.evidence.nhs.uk/>

Practice signposts: data sources to support practice



Social Care Institute for Excellence (SCIE)

The Social Care Institute for Excellence (SCIE) improves the lives of people who use care services by sharing knowledge about what works. We are an independent charity working with adults, families and children's social care and social work services across the UK. We also work closely with related services such as health care and housing. We gather and analyse knowledge about what works and translate that knowledge into practical resources, learning materials and services. Our work helps to improve the knowledge and skills of those working in care services. This includes managers, frontline staff, commissioners and trainers. People and their families who use these services also use our resources. All of our work is developed in collaboration with experts - including people who use care services and their carers. <http://www.scie.org.uk/>

Decision Map.ie

DecisionMap.ie, the new online decision-support tool developed by Ordnance Survey Ireland and Twelve Horses. DecisionMap, currently in beta test release, combines digital mapping from Ordnance Survey Ireland, with visualisation and web delivery tools developed by Twelve Horses, and statistical data provided by the Central Statistics Office and others. It aims to provide decision makers in the public and private sectors instant access to easily-consumable, spatially referenced data about Ireland. <http://decisionmap.ie/>

Growing Up in Ireland

Growing Up in Ireland is a national study of children. It is the most significant of its kind ever to take place in this country and will help us to improve our understanding of all aspects of children and their development.

The study will take place over seven years and follow the progress of two groups of children; 8500 nine-year-olds and 11,000 nine-month-olds. During this time we will carry out two rounds of research with each group of children.

The main aim of the study is to paint a full picture of children in Ireland and how they are developing in the current social, economic and cultural environment. This information will be used to assist in policy formation and in the provision of services which will ensure all children will have the best possible start in life.

<http://www.growingup.ie/>

Irish Qualitative Data Archive

The Irish Qualitative Data Archive (IQDA) is a central access point for qualitative social science data and provides online access to all new qualitative data generated within the [Irish Social Science Platform](#), and to selected existing data. <http://www.iqda.ie/content/welcome-iqda>

North South Child Protection Hub

This hub available for use by child protection professionals (policy makers, practitioners, researchers and educators) in Northern Ireland and the Republic of Ireland.

The Hub brings together research, policy and practice guidance, inspection reports, serious case reviews, court judgements, news articles and other material relevant to child protection published in Northern Ireland and the Republic of Ireland together with material from Great Britain and other countries. Staff in the Health and Social Care Board and Trusts in Northern Ireland and in the Health Service Executive in the Republic of Ireland, will have access to the Hub but it will also be an important resource for all organisations concerned with child protection. <http://www.nscph.com/>

RIAN - Irish Open Access Research Archive (free)

RIAN is the outcome of a sectoral higher education project supported by the Irish Government's 'Strategic Innovation Fund'. Project planning was carried out by the seven Irish university libraries, [DCU](#), [NUIG](#), [NUIM](#), [TCD](#), [UCC](#), [UCD](#), [UL](#) and was supported by the [Irish Universities Association \(IUA\)](#). The project aim is to harvest to one portal the contents of the Institutional Repositories of the seven university libraries, in order to make Irish research material more freely accessible, and to increase the research profiles of individual researchers and their institutions. It is intended to extend the harvest to other Irish research institutions as RIAN develops.

<http://rian.ie/en>

ABSTRACT

BACKGROUND

Experiencing anxiety and depression is very common in people with dementia and mild cognitive impairment (MCI). Psychological interventions have been suggested as a potential treatment for these populations. Current research suggests that people with dementia and MCI have limited opportunities for psychological treatments aimed at improving their well-being. A systematic review of the evidence on their effectiveness is likely to be useful in terms of improving outcomes for patients and for future recommendations for practice.

OBJECTIVES

The main objective of this review was to assess the effectiveness of psychological interventions in reducing anxiety and depression in people with dementia or mild cognitive impairment (MCI).

SEARCH METHODS

We searched the Cochrane Dementia and Cognitive Improvement Group Specialized Register and additional sources for both published and unpublished data.

SELECTION CRITERIA

We included randomised controlled trials (RCTs) comparing a psychological intervention with usual care or a placebo intervention (social contact control) in people with dementia or MCI.

DATA COLLECTION AND ANALYSIS

Two review authors worked independently to select trials, extract data and assess studies for risk of bias, using a data extraction form. We contacted authors when further information was not available from the published articles.

MAIN RESULTS

Six RCTs involving 439 participants with dementia were included in the review, but no studies of participants with MCI were identified. The studies included people with dementia living in the community or in nursing home care and were carried out in several countries. Only one of the studies was classified as low risk of bias. Five studies were at unclear or high risk of bias due to uncertainties around randomisation, blinding and selective reporting of results. The studies used the different psychological approaches of cognitive behavioural therapy (CBT), interpersonal therapy and counselling. Two studies were of multimodal interventions including a specific psychological therapy. The comparison groups received either usual care, attention-control educational programs, diagnostic feedback or services slightly above usual care.

Meta-analysis showed a positive effect of psychological treatments on depression (6 trials, 439 participants, standardised mean difference (SMD) -0.22; 95% confidence interval (CI) -0.41 to -0.03, moderate quality evidence) and on clinician-rated anxiety (2 trials, 65 participants, mean difference (MD) -4.57; 95% CI -7.81 to -1.32, low quality evidence), but not on self-rated anxiety (2 trials, SMD 0.05; 95% CI -0.44 to 0.54) or carer-rated anxiety (1 trial, MD -2.40; 95% CI -4.96 to 0.16). Results were compatible with both benefit and harm on the secondary outcomes of patient quality of life, activities of daily living (ADLs), neuropsychiatric symptoms and cognition, or on carers' self-rated depressive symptoms, but most of the studies did not measure these outcomes. There were no reports of adverse events.

Psychological treatments for depression and anxiety in dementia and mild cognitive impairment

By Vasiliki Orgeta, Afifa Qazi, Aimee E Spector and Martin Orrell (January 2014)



AUTHOR'S CONCLUSIONS

We found evidence that psychological interventions added to usual care can reduce symptoms of depression and clinician-rated anxiety for people with dementia. We conclude that psychological interventions have the potential to improve patient well-being. Further high quality studies are needed to investigate which treatments are most effective and to evaluate the effect of psychological interventions in people with MCI.

PLAIN LANGUAGE SUMMARY

Psychological treatments for depression and anxiety in dementia and mild cognitive impairment

Symptoms of depression and anxiety are common in people with dementia and mild cognitive impairment (MCI). Although treatment of these symptoms is widely recommended in guidelines, the best way to do this is not clear. Drugs are thought to have limited effectiveness in this context and carry the risk of significant side effects. Psychological treatments can be adapted for use with people with cognitive impairment and may offer an alternative treatment. This review identified six randomised controlled trials, including 439 participants, in which a psychological treatment for people with dementia was compared to usual care. Most participants had mild dementia, but one trial was conducted with nursing home residents who had more severe dementia. We found no trials of participants with MCI. The psychological interventions used were based on established psychological models such as cognitive behavioural therapy (CBT), counselling, and interpersonal psychodynamic therapy. In two trials, the psychological treatment was combined with other interventions. We found evidence that psychological treatments can reduce depressive symptoms in people with dementia. There was also some evidence from two trials that CBT may reduce clinician-rated anxiety symptoms in people with mild dementia. Due to the imprecision of our results, we could not tell whether psychological treatments had an effect on patients' quality of life, ability to perform daily activities, overall psychiatric symptoms, or cognition, or on carers' self-rated depressive symptoms, but most studies did not measure these outcomes. Although these results are promising, the small number of studies and the variation between them in the type and duration of treatment make it difficult to draw conclusions about the best way to provide psychological treatment for people with dementia who have symptoms of depression or anxiety. More high quality trials in this area would be beneficial, including trials involving participants with MCI.

Link to review: <http://onlinelibrary.wiley.com/doi/10.1002/14651858.CD009125.pub2/abstract>

BACKGROUND

The sexual abuse of children and adolescents is a significant worldwide problem. It is associated with a wide variety of negative psychological, social and physical consequences for the victims. These effects can often be seen immediately following sexual abuse, but they may manifest later on and sometimes only in adult life. There are a number of different interventions aimed at helping children and adolescents who have been sexually abused, and psychoanalytic/psychodynamic psychotherapy has a long-established tradition of being used for such victims. In this review, we set out to find the evidence for its effectiveness specifically in children and adolescents who have been sexually abused.

OBJECTIVES

To assess the effectiveness of psychoanalytic/psychodynamic psychotherapy for children and adolescents who have been sexually abused.

SEARCH METHODS

We searched the following databases in May 2013: CENTRAL, Ovid MEDLINE, Embase, PsycINFO, CINAHL, Sociological Abstracts, Social Science Citation Index, Conference Proceedings Citation Index - Social Science and Humanities, LILACS and WorldCat. We also searched three trials registers, checked the reference lists of relevant studies and contacted known experts.

SELECTION CRITERIA

Randomised and quasi-randomised trials comparing psychoanalytic/psychodynamic psychotherapy with treatment as usual or no treatment/waiting list control for children and adolescents up to age of 18 who had experienced sexual abuse at any time prior to the intervention.

DATA COLLECTION AND ANALYSIS

The review authors (BP and WT) independently screened search results to identify studies that met eligibility criteria.

RESULTS

No studies were identified that met the inclusion criteria for this review.

AUTHORS' CONCLUSIONS

There are no randomised and quasi-randomised trials that compare psychoanalytic/psychodynamic therapy with treatment as usual, no treatment or waiting list control for children and adolescents who have been sexually abused. As a result, we cannot draw any conclusions as to the effectiveness of psychoanalytic/psychodynamic psychotherapy for this population. This important gap emphasises the need for further research into the effectiveness of psychoanalytic/psychodynamic psychotherapy in this population. Such research should ideally be in the form of methodologically high-quality, large-scale randomised controlled trials. If these are not conducted, future systematic reviews on this subject may need to consider including other lower quality evidence in order to avoid overlooking important research.

Link to review: <http://www.campbellcollaboration.org/lib/project/309/>

Clinical Social Work & the Psychiatric vs. Person-in Environment Perspectives

Probst, B. (2013). "Walking the tightrope:" Clinical social workers' use of diagnostic and environmental perspectives. *Clinical Social Work Journal*, 41(2), pp.184-191.

What is this article about?

This article reports the findings of a US-based qualitative research study exploring how clinical social workers (N=30) think about and utilise two distinct world views in their practice:

- The psychiatric perspective of DSM diagnosis (Diagnostic and Statistical Manual of Mental Disorders), and;
- The contextual person-in environment perspective.

What are the critical findings?

- 1) Participants found the DSM useful despite its limitations and the significant ethical concerns and dilemmas it evoked: Most considered DSM diagnosis more helpful for psycho-education, validation of a person's suffering, and formulation of realistic hope.
- 2) The person-in environment perspective was found to enhance empathy and understanding and offered supplemental avenues for intervention. Participants felt it was essential to view clients in their entire life contexts.
- 3) Participants did not report experiencing a conflict between the two perspectives, but made use of both in a reciprocal, mutually interacting and holistic manner as 'both/and' rather than 'either/or.'
- 4) Many saw the two world views in a dynamic inter-relationship and felt it was important not to minimise or marginalise either perspective.

What are the implications for practice?

- 1) The therapeutic relationship appears to be more essential to practice than either perspective alone or in combination.
- 2) Additional lenses are used in practice alongside the DSM and person-in environment perspectives including psychodynamic theory, family systems models, and emotion-focused therapy.

Workshops and mentoring in models of clinical decision-making can be provided to help new social workers utilise the DSM in ways that are meaningful, practical, and ethical.

Gender-based Violence & Women with Disabilities

del Rio Ferres, E., Megias, J.L., & Exposito, F. (2013). Gender-based violence against women with visual and physical disabilities. *Psicothema*, 25(1), pp.67-72.

What is this article about?

This article reports the findings of a qualitative Spanish research study that aimed to:

- Determine the annual and lifetime prevalence of abuse in women with physical and visual disabilities, and;
- Explore the possible role of level of education, family and job status, dependence on a caregiver, and financial status as risk or vulnerability factors for violence.

What are the critical findings?

- 1) A higher prevalence of abuse was identified among participants than the estimated prevalence in the general female population in Spain.
- 2) Abused women were found to have lower income and higher levels of physical dependence and family responsibilities than non-victims.
- 3) Violence was associated with lower levels of emotional well-being, psychological health, self-esteem, and perceived social support beyond those attributable to the disability.

What are the implications for practice?

- 1) Findings contribute to the growing knowledge base highlighting the fact that women with disabilities experience gender-based violence with greater intensity than non-disabled women.
- 2) There is a need for specific instruments and tools to be developed in order to identify abuse among women with disabilities and highlight the role as risk factors of certain socio-demographic and socioeconomic factors, some of which are strongly related to disabilities themselves.

Disclosure of Child Sexual Abuse among Adult Male Survivors

Easton, S.D. (2013). Disclosure of child sexual abuse among adult male survivors. *Clinical Social Work Journal*, 41(4), pp.344-355.

What is this article about?

This article reports the findings of a US-based quantitative research study that aimed to:

- Describe the disclosure process of male survivors (N=487) of child sexual abuse (CSA) using a lifespan approach;
- Identify disclosure differences based on age and type of abuser;
- Explore relationships between disclosure attributes and current mental health.

What are the critical findings?

- 1) On average it took participants more than two decades from the time of the sexual abuse to tell someone about the CSA and nearly three decades to have an in-depth conversation of the CSA.
- 2) Twenty six percent of participants told someone in childhood and 15% reported the CAS to authorities.
- 3) The length of time before first telling someone about the sexual abuse was positively related to mental distress including symptoms of depression, anxiety, somatisation, and suicidality.
- 4) Unhelpful responses to disclosure were related to more mental distress.
- 5) Less maternal support following disclosure was related to more mental distress in adulthood.
- 6) Abuse by a family member can inhibit disclosure for male survivors including lower rates of reporting to authorities, telling someone in childhood, and discussing with a spouse or partner in adulthood.

What are the implications for practice?

- 1) Clinical social workers can adopt a lifespan approach to disclosure history during assessment. Using a broader historical framework social workers can obtain a more complete personal history of how the survivor managed the secret of being sexually abused and a more comprehensive understanding of the timing, circumstances, and responses to disclosure across the lifespan of the survivor.
- 2) Clinical social workers can help clients understand the impact of unhelpful responses to disclosure on their current mental health.
- 3) Clinical social workers can help male survivors assess and, if necessary, expand their current support network.
- 4) Clinical social workers are encouraged to recognise and treat the unique needs of sub-populations within the population of male survivors of CAS including incest survivors and older survivors.
- 5) The field of social work could increase the profession's capacity to effectively treat male survivors in clinical settings by improving professional education and training programmes.

Organisational Profile

Centre for Research on Families and Relationships



Who are they?

The Centre for Research on Families and Relationships (CRFR) was established in 2001 as a consortium research centre based at the University of Edinburgh, with partners at the Universities of Aberdeen, Glasgow, Glasgow Caledonian, Highlands & Islands and Stirling.

CRFR Aims:

- Produce high quality, collaborative, and inclusive research relevant to key issues in families and relationships.
- Act as a focal point, and promote and facilitate a network, for all those with an interest in research on families and relationships.
- Make research more accessible for use by policy makers, practitioners, research participants, academics, and the wider public.
- Enhance the infrastructure to conduct research on families and relationships.

What do they do?

Using a consortium approach, the CRFR develops a multi-disciplinary work programme that reflects current issues and trends from across the country. They also have particular expertise in bridging sociological and social work research. Research areas focus on issues related to:

- Childhoods, families, and relationships
- Inequalities across the life course
- Gender-based violence
- Health, caring, and well-being
- Environment, lifestyle, and consumption
- Evidence-use: Evaluation, innovation, and participation
- Work, institutions, and civic society: Rights and governance

Research projects completed to date include (available on the CRFR website):

1. *Life in Low Incomes Families*: This research project explored the views and experiences of poverty amongst those living within low income households with at least one child under the age of 18.
2. *Older Women and Domestic Violence*: The CRFR was commissioned by NHS Health Scotland to carry out a short research project on older women and domestic violence.
3. *Parenting Support and Drug Use*: This project aimed to explore understandings about parenting and parenting capacity among drug-using parents, and health-care professionals.

Where can I find out more?

<http://www.cfr.ac.uk>

Podcasts/Videos



Reading Social Work Blogs

What is a Blog ? A blog is a personal web page written by an individual or organisation. Usually it incorporates personal views, opinions and comment on topic issues. The best blogs are read by thousands of people everyday.

How do I find them ?

Just search for the word “blog” and any topic you are interested in. It may take some time to find a site you are happy with. Once you find the right one you might want to access it everyday. The best blogs include links to other sites of interest. To start you off check out: <http://www.socialworkblogs.info/>

How do I write my own blog ?

It is simple to write your own blog – use sites like Wordpress.com, SimpleSite.com or Blogspot.com – there are a range of simple guides available. The secret is to link to other sites, get people interested.

Warning: as Social Workers we need to be mindful of what we write about our work and in particular our clients. If you do write your own blog or contribute to an online debate then make sure you do not mention names, places or anything that could identify anyone you work with.

Audio & Video Podcasts

What is a Podcast? A multi-media file made available by the internet which can be viewed or listened to on a computer, tablet, MP3 player or CD player.

How do I listen to a Podcast? You can listen to a Podcast straightaway on any PC which has speaker or a headphones or you can download it to listen to later. The file can also be saved to an MP3 player or USB memory stick. Some modern CD players can play Podcasts just like a music CD. Some Podcasts are updated regularly – how do I get the latest version?

You can use iTunes or other services to check regularly to see if the Podcast has been updated. You can also subscribe using an RSS feed which will inform you when the new edition is ready. Some Smartphones can also download and update Podcasts. For more information go to: <http://www.bbc.co.uk/podcasts/help>

Podcast: Motivational Interviewing

This episode of the Social Work Podcast is with Mary Velasquez on the topic of MI. She talks about how she became involved with Motivational Interviewing, what has changed and stayed the same in the revised version of Motivational Interviewing and the the four change processes. Available at: <http://socialworkpodcast.blogspot.ie/>

Podcast: Sex, Relationships, and HIV

A conversation with Dr. Wyatt on the topics of: how couples can plan and enjoy safe sex; addressing past histories of abuse within the context of a consensual sexual relationship; and, healthy sexual behaviours. Available at <http://socialworkpodcast.blogspot.ie/>

Podcast: Bodies, Grief and Social Work

In some ways we are death obsessed yet we often hide away from the realities of death. John Drayton talks to us about his research in coronial social work with relatives of deceased people and their relationships with the deceased. Available at: <http://www.podsocs.com/podcast/bodies-grief-and-social-work/>.



Podcasts



Podcast: Talking about Suicide

Suicide affects individuals, families and communities throughout society. In this podcast, Samara McPhedran takes us on a journey of thinking about suicide in relation to young people, older people, Aboriginal and Torres Strait Islander peoples and those people in specific jobs like farming. Available at: <http://www.podsocs.com/podcast/talking-about-suicide/>

Podcast: Moral Panic and Claims Making

What is moral panic and claims making? Gary Clapton fills us in and fixes a sceptical eye on how it plays out in child protection. He takes a sceptical view of the panics and alarms that beset social work. A number of publications have been produced in the process, the principal ones look at Child Protection, The question of Historic Abuse and Child Trafficking. Available at: <http://www.podsocs.com/podcast/moral-panic-and-claims-making/>

Podcast: Children and the Internet

What are the risks to children using the internet and where does social work fit in technological research and practice? In this podcast, Corinne May-Chahal broaches these issues and ventures into the world of children on the internet. Available at: <http://www.podsocs.com/podcast/children-and-the-internet/>

Podcast: Involving fathers in Family Work

From Joseph Fleming on the topic of how social work and other helping professionals can engage biological and social fathers more effectively in practice based on his published work on 'The Absence of Fathers in Child and Family Welfare Practice'. Available at: <http://www.podsocs.com/podcast/involving-fathers/>

Video: Encyclopaedia of Social Work

Interview from the Oxford University Press spoke with Cynthia Franklin, Ph.D, editor of the new Encyclopaedia of Social Work online, to hear her perspective on social work research today. Available at: <http://www.youtube.com/watch?v=B36mofRxJrw>

Video: Self Care for Social Workers

NASW member Lisa Wessan shares her Top 10 List for self care for social workers - link to her article also. Available at: <http://www.youtube.com/watch?v=vJ5fqsWskkE>

Video: Research Update on Successful Ageing and Mental Health- Research on Ageing

Colin Depp, PhD examines the historical and contemporary definitions of ageing and the application of those definitions to mental health problems. He also discusses the behavioural and biological determinants of successful ageing. Available at: <http://www.youtube.com/watch?v=gf-Cu7xW5tw>

Video: 10 Year Old Girl Lobbies for a Doll with Disabilities

Melissa Shang is pushing the creators of American Girl to feature a doll with a disability; she has progressive muscular dystrophy and has made the request to the company so little girls like her can see themselves in a brand-new way. Available at: <http://www.youtube.com/watch?v=ToWkL5Bnmo0>



About Practice Links

Practice Links is a free e-publication for practitioners working in Irish social services, voluntary and non-governmental sectors. *Practice Links* was created to help practitioners in these areas to keep up-to-date with new publications, electronic publications, conferences and continuing professional development opportunities. *Practice Links* is published every other month in Adobe Acrobat (.pdf file). Distribution is by email, Twitter and on the *Practice Links* website <http://www.ucc.ie/en/appsoc/aboutus/activities/pl/>.

Submissions

Submission for publication should be received two weeks prior to the next publication date. Please forward submissions by email to k.burns@ucc.ie.

SWDU

Practice Links is a publication of the Social Work Development Unit, University College Cork, Ireland. <http://swdu.ucc.ie>

To subscribe for free to the *Practice Links* email distribution list, whereby you will automatically receive each edition, click on this link <http://lists.ucc.ie/lists/archives/pl-l.html> and press the *Join or Leave PL-L* button. Follow the same process to unsubscribe from the list.

Follow us on Twitter @PracticeLinks.

Disclaimer

The inclusion of an item in *Practice Links* does not represent an endorsement and items may not necessarily reflect the views of the editor and/or the University.

Subscriptions

Practice Links
is edited (January-June 2014)
by

Kerry Cuskelly
c/o School of Applied Social Studies
University College Cork
William Thompson House
Donovan's Road, Cork, Ireland.

E: kerry.cuskelly@gmail.com

Practice Links Team

Dr. Kenneth Burns
School of Applied Social Studies
E: k.burns@ucc.ie
W: <http://www.ucc.ie/en/appsoc/aboutus/activities/pl/>
W: <http://swdu.ucc.ie>

Steven Peet
Social Worker, HSE

Eavan Brady
PART, Canada

Kerry Cuskelly



* Photo copyright "trumpetvine" from www.flickr.com



UCC

University College Cork, Ireland
Coláiste na hOllscoile Corcaigh

@PracticeLinks

Follow us on Twitter for regular updates!