



Title	A preliminary study on how fatigue affects scoring average in professional darts
Author(s)	Walsh, Michael; Tyndyk, Magdalena; Barton, John; O'Flynn, Brendan; Ó Mathúna, S. Cian
Editor(s)	Vilas-Boas, J. Paulo Machado, Leandro Kim, Wangdo Veloso, António P. Alves, Francisco Fernandes, Ricardo J. Conceicao, Filipe
Publication date	2011-07
Original citation	WALSH, M., TYNDYK, M., BARTON, J., O'FLYNN, B. & Ó MATHÚNA, S. C. A preliminary study on how fatigue affects scoring average in professional darts. In: VILAS-BOAS, J. P., MACHADO, L., KIM, W., VELOSO, A. P., ALVES, F., FERNANDES, R. J. & CONCEICAO, F., eds. Annual Symposium of the International Society of Biomechanics in Sports (ISBS2011), 27 Jun - 1 Jul 2011 Porto, Portugal. International Society of Biomechanics in Sports, 779-782.
Type of publication	Conference item
Link to publisher's version	http://w4.ub.uni-konstanz.de/cpa/article/view/4950 Access to the full text of the published version may require a subscription.
Rights	© Walsh, Michael, Magdalena Tyndyk, John Barton, Brendan O'Flynn, and S. Cian Ó Mathúna
Item downloaded from	http://hdl.handle.net/10468/543

Downloaded on 2017-02-12T07:32:29Z

A PRELIMINARY STUDY ON HOW FATIGUE AFFECTS SCORING AVERAGE IN PROFESSIONAL DARTS

Michael Walsh¹, Magdalena Tyndyk², John Barton¹, Brendan O'Flynn¹ and Cian O'Mathuna¹

Clarity Centre for Web Technologies, Tyndall National Institute, Microsystems Centre, University College Cork, Ireland¹

Medical Engineering Design and Innovation Centre, Department of Manufacturing, Biomedical and Facilities Engineering, Cork Institute of Technology, Ireland²

The purpose of this preliminary study was to identify signs of fatigue in specific muscle groups that in turn directly influence accuracy in professional darts. Electromyography (EMG) sensors were employed to monitor the electrical activity produced by skeletal muscles of the trunk and upper limb during throw. It was noted that the Flexor Pollicis Brevis muscle which controls the critical release action during throw shows signs of fatigue. This was accompanied by an inherent increase in mean integral EMG amplitude for a number of other throw related muscles indicating an attempt to maintain constant applied throwing force. A strong correlation was shown to exist between average score and decrease in mean integrated ECG amplitude for the Flexor Pollicis Brevis.

KEY WORDS: electromyography, Flexor Pollicis Brevis.

INTRODUCTION: Correlating performance and the kinematics of the overarm throwing action in darts is difficult for a number of reasons including the movement duration (<200ms) and the large number of variables that will impact the outcome or accuracy of the throw. These factors which include release time, hand trajectory, speed and position at release and centre of gravity can, based on an infinite number of combinations, result in the same outcome. In competitive darts, player technique is therefore optimised by minimising the deviation of as many of these variables as possible (Burke & Yeadon, 2009; Smeets et al., 2002; Walsh, 2011 et al.). This study examined fatigue and its influence on technique and performance for a professional darts player.

METHODS: Data from a professional player aged 24 years and ranked within the top 75 in the Professional Darts Corporation (PDC) world rankings was used in the analysis for this work. The electrical activity produced by skeletal muscles of the trunk and upper limb during successive throws was evaluated at 4kHz using Zerowire EMG electrodes (Aurion, Italy). Muscle activation patterns were recorded using 8 EMG sensors attached to the player's torso and right upper limb according to SENIAM recommendations, (Hermens, 1999). The electrical potentials generated by Upper and Lower Trapezius, Anterior and Posterior Deltoid, Biceps Brachii, Triceps Brachii, Brachioradialis and Flexor Pollicis Brevis muscle groups were gathered during the trial.

The player performed 150 throws over 40 minutes and attempted in the process to score as highly as possible. Score and the projectile's final position on the target were recorded manually. The player was allowed to select a target area on the dart board in real-time and throughout this trial the primary target (> 96% attempts) was the triple 20 section of the dart board. The EMG was recorded throughout and analysis of the data was carried out using a number of toolboxes in Matlab. Statistical analysis of the EMG signal in the time domain was conducted using the Statistics toolbox and correlation between average score and EMG was carried out employing the Wavelet toolbox and the Semblance Analysis tool (Cooper & Cowan, 2008).

RESULTS: Figure 1 illustrates the muscle activation pattern for the Flexor Pollicis Brevis after 1, 20 and 40 minutes highlighting the decrease in contraction over time. Figure 2 shows

the variation in mean integral EMG amplitude at 1, 20 and 40 minutes for the Upper and Lower Trapezius, Anterior and Posterior Deltoid, Biceps Brachii, Triceps Brachii, Brachioradialis and Flexor Pollicis Brevis muscle groups. In figure 3 the inherent decrease in EMG muscle activation amplitude was shown through semblance analysis to correlate strongly with average score.

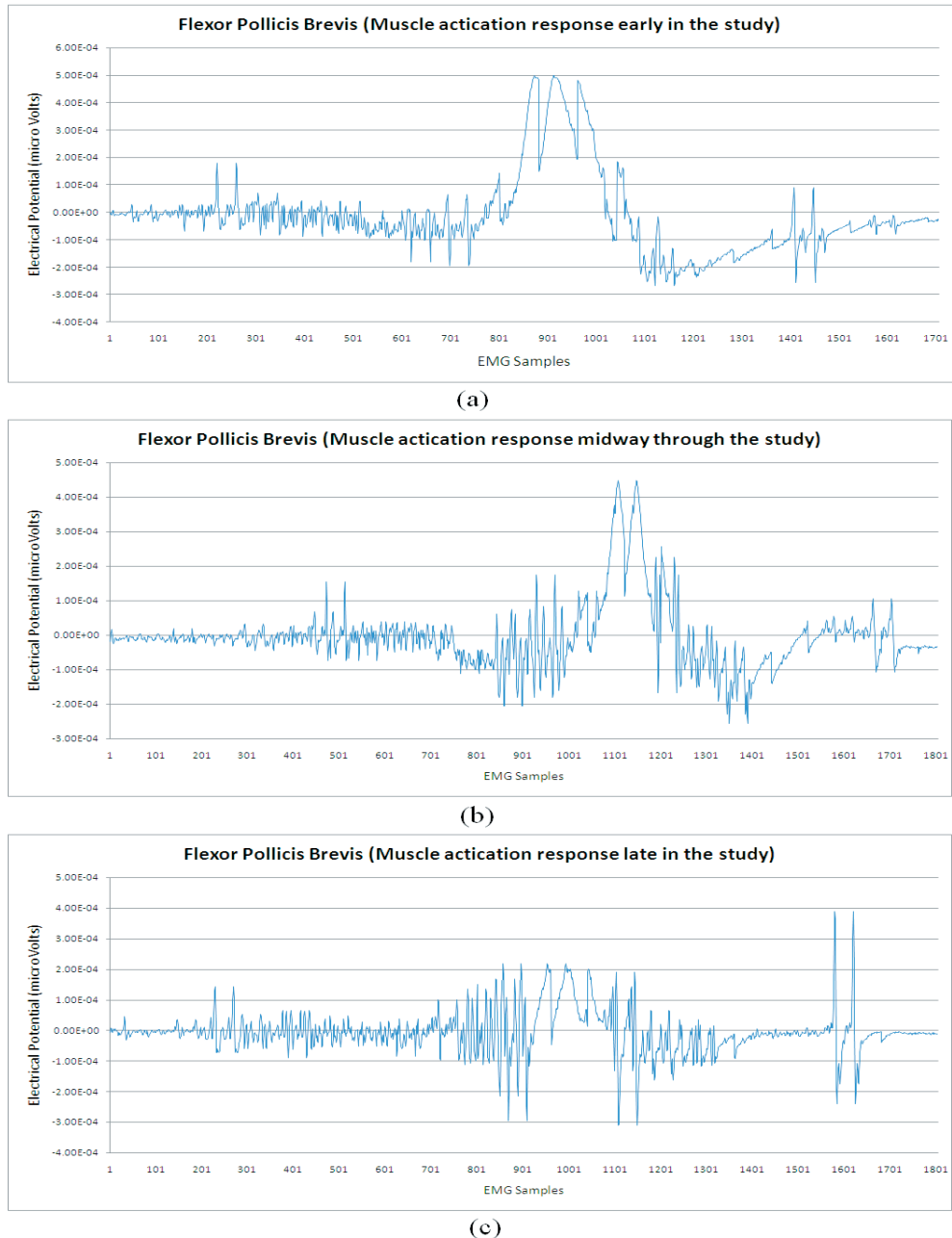


Figure 1: Flexor Pollicis Brevis muscle activation pattern (a) after 1 min, (b) after 20 min and (c) after 40 min.

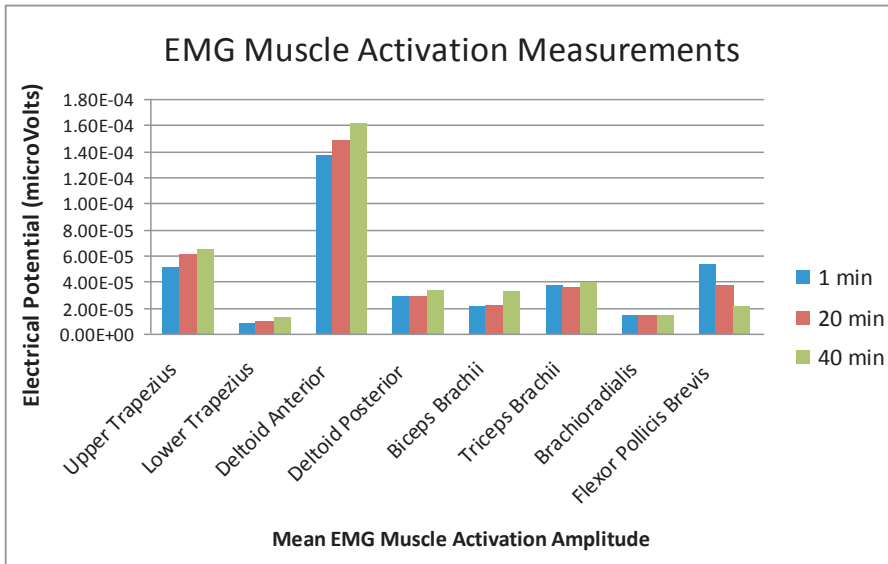


Figure 2: Mean Integral EMG Amplitude for the Upper and Lower Trapezius, Anterior and Posterior Deltoid, Biceps Brachii, Triceps Brachii, Brachioradialis and Flexor Pollicis Brevis muscle groups.

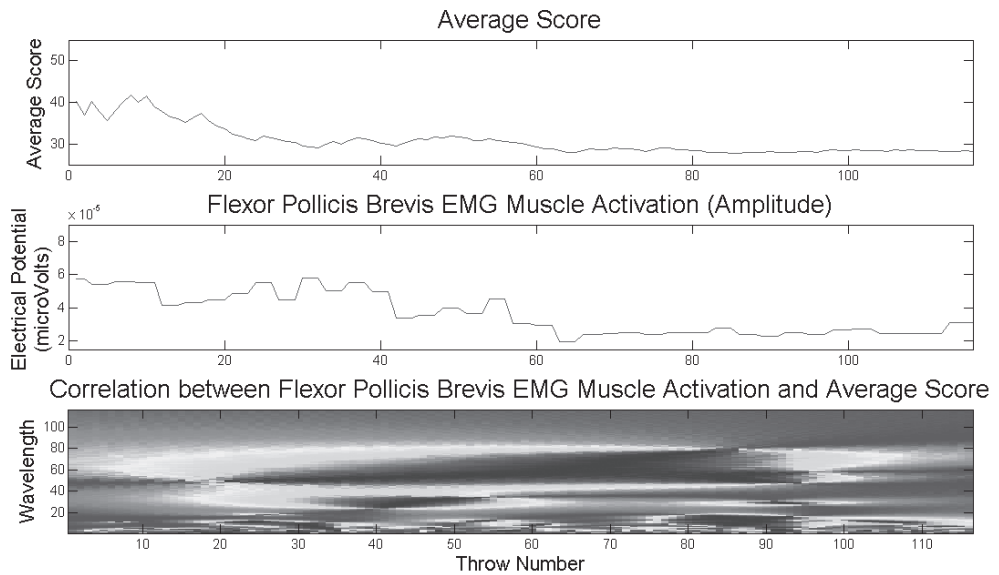


Figure 3: Semblance analysis highlighting the correlation between average score and amplitude EMG muscle activation for the Flexor Pollicis Brevis.

DISCUSSION: The results of this study indicated that for the subject in question there was an inherent decrease in the mean integral EMG amplitude of the Flexor Pollicis Brevis throughout the trial. This muscle is critical to accuracy as it controls release timing which has been strongly correlated with accuracy in darts (Burke & Yeadon, 2009). In addition it has previously been noted that the technically proficient player will seek to keep force applied by the throwing arm constant (Smeets et al., 2002; Walsh, 2011 et al.). In this trial other throw related muscles increase in mean integral EMG amplitude indicating an attempt to maintain constant applied throwing force as would be expected from a technically accomplished player. A strong correlation was also shown to exist between average score and decrease in mean integral ECG amplitude for the Flexor Pollicis Brevis. This would seem to agree with previous works highlighting the importance of release timing (Smeets et al., 2002).

CONCLUSION: This study highlighted that the Flexor Pollicis Brevis muscle which controls the critical release action during throw shows signs of fatigue over prolonged periods of throwing. This was accompanied by an inherent increase in mean integral EMG amplitude for a number of other throw related muscles indicating an attempt to maintain constant applied throwing force. A strong correlation was shown to exist between average score and decrease in mean integral ECG amplitude for the Flexor Pollicis Brevis. Future work will perform additional trials comparing amateur and professional players and will be accompanied by EMG data analysis in the frequency domain to validate findings to date.

REFERENCES:

- Burke D. & Yeadon M. (2009). A comparison of compensation for release timing and maximum hand speed in recreational and competitive darts players, *27th International Conference on Biomechanics in Sports*, pp. 154-157.
- Cooper, G.R.J., & Cowan, D.R., (2008). Comparing Time Series using Wavelet Based Semblance Analysis, *Computers & Geosciences*, .34, 95-102.
- Dideriksen J., Farina D. & Enoka R. (2010). Influence of fatigue on the simulated relation between the amplitude of the surface electromyogram and muscle force, *Phil. Trans. R. Soc.*, 368, 2765-2781.
- Hermens H. (1999). SENIAM: European Recommendations for Surface Electromyography, *Roessingh Research and Development b.v.*, 2nd Edition, ISBN 90-75452-15-2.
- Smeets J., Frens M. and Brenner E. (2002). Throwing darts: timing is not the limiting factor, *Experimental Brain Research*, 144, 268-274.
- Walsh, M., Tyndyk, M., Barton, J., O'Flynn, B., O'Mathuna, C (2011). Precision Biomechanical motion Tracking and Throw Characterisation in Professional Darts, *Annual Conference of the Bioengineering Section of the Royal Academy of Medicine in Ireland, Bioengineering In Ireland*, January 28–29, Galway, Ireland.

Acknowledgement

The authors would like to acknowledge support by Science Foundation Ireland under grant 07/CE/I1147.