



OPEN ACCESS

EDITED BY

Shimin Hu,
University of Texas MD Anderson Cancer
Center, United States

REVIEWED BY

Mohammad Vasef,
University of New Mexico, United States
Luis Alberto De Pádua Covas Lage,
University of São Paulo, Brazil

*CORRESPONDENCE

Joshua R. Menke

✉ jmenke@stanford.edu

Dita A. Gratzinger

✉ ditag@stanford.edu

RECEIVED 27 March 2024

ACCEPTED 15 May 2024

PUBLISHED 06 June 2024

CITATION

Menke JR, Aypar U, Bangs CD, Cook SL,
Gupta S, Hasserjian RP, Kong CS, Lin O,
Long SR, Ly A, Menke JAS, Natkunam Y,
Ruiz-Cordero R, Spiteri E, Ye J, Zadeh SL and
Gratzinger DA (2024) Performance of *MYC*,
BCL2, and *BCL6* break-apart FISH in small
biopsies with large B-cell lymphoma: a
retrospective Cytopathology
Hematopathology Interinstitutional
Consortium study.
Front. Oncol. 14:1408238.
doi: 10.3389/fonc.2024.1408238

COPYRIGHT

© 2024 Menke, Aypar, Bangs, Cook, Gupta,
Hasserjian, Kong, Lin, Long, Ly, Menke,
Natkunam, Ruiz-Cordero, Spiteri, Ye, Zadeh
and Gratzinger. This is an open-access article
distributed under the terms of the [Creative
Commons Attribution License \(CC BY\)](#). The
use, distribution or reproduction in other
forums is permitted, provided the original
author(s) and the copyright owner(s) are
credited and that the original publication in
this journal is cited, in accordance with
accepted academic practice. No use,
distribution or reproduction is permitted
which does not comply with these terms.

Performance of *MYC*, *BCL2*, and *BCL6* break-apart FISH in small biopsies with large B-cell lymphoma: a retrospective Cytopathology Hematopathology Interinstitutional Consortium study

Joshua R. Menke^{1*}, Umut Aypar², Charles D. Bangs³,
Stephen L. Cook⁴, Srishti Gupta^{1,5}, Robert P. Hasserjian⁶,
Christina S. Kong⁷, Oscar Lin⁸, Steven R. Long⁹, Amy Ly¹⁰,
Jacob A. S. Menke¹¹, Yasodha Natkunam¹,
Roberto Ruiz-Cordero^{8,12}, Elizabeth Spiteri³, Julia Ye⁹,
Sara L. Zadeh¹³ and Dita A. Gratzinger^{1*} on behalf of the
Cytopathology Hematopathology Interinstitutional
Consortium (CHIC)

¹Division of Hematopathology, Department of Pathology, Stanford University, Stanford, CA, United States, ²Division of Cytogenetics, Department of Pathology and Laboratory Medicine, Memorial Sloan Kettering Cancer Center, New York, NY, United States, ³Division of Cytochemistry, Department of Pathology, Stanford University, Stanford, CA, United States, ⁴Department of Laboratory Medicine, San Francisco Veterans Administration Health Care System, San Francisco, CA, United States, ⁵Division of Hematopathology, Department of Laboratory Medicine, San Francisco, CA, United States, ⁶Division of Hematopathology, Department of Pathology, Massachusetts General Hospital, Boston, MA, United States, ⁷Division of Cytopathology, Department of Pathology, Stanford University, Stanford, CA, United States, ⁸Division of Cytopathology, Department of Pathology and Laboratory Medicine, Memorial Sloan Kettering Cancer Center, New York, NY, United States, ⁹Division of Cytopathology, Department of Pathology, University of California, San Francisco, San Francisco, CA, United States, ¹⁰Division of Cytopathology, Department of Pathology, Massachusetts General Hospital, Boston, MA, United States, ¹¹Senior Backend Engineer, Big Nerd Ranch, Atlanta, GA, United States, ¹²Divisions of Molecular Genetic Pathology, Cytopathology, and Hematopathology, Department of Pathology and Laboratory Medicine, University of Miami, Miami, FL, United States, ¹³Division of Cytopathology, Department of Pathology, University of Virginia, Charlottesville, VA, United States

Introduction: Fluorescence *in situ* hybridization (FISH) is an essential ancillary study used to identify clinically aggressive subsets of large B-cell lymphomas that have *MYC*, *BCL2*, or *BCL6* rearrangements. Small-volume biopsies such as fine needle aspiration biopsy (FNAB) and core needle biopsy (CNB) are increasingly used to diagnose lymphoma and obtain material for ancillary studies such as FISH. However, the performance of FISH in small biopsies has not been thoroughly evaluated or compared to surgical biopsies.

Methods: We describe the results of *MYC*, *BCL2*, and *BCL6* FISH in a series of 222 biopsy specimens, including FNAB with cell blocks, CNBs, and surgical excisional

or incisional biopsies from 208 unique patients aggregated from 6 academic medical centers. A subset of patients had FNAB followed by a surgical biopsy (either CNB or excisional biopsy) obtained from the same or contiguous anatomic site as part of the same clinical workup; FISH results were compared for these paired specimens.

Results: FISH had a low hybridization failure rate of around 1% across all specimen types. FISH identified concurrent *MYC* and *BCL2* rearrangements in 20 of 197 (10%) specimens and concurrent *MYC* and *BCL6* rearrangements in 3 of 182 (1.6%) specimens. The paired FNAB and surgical biopsy specimens did not show any discrepancies for *MYC* or *BCL2* FISH; of the 17 patients with 34 paired cytology and surgical specimens, only 2 of the 49 FISH probes compared (4% of all comparisons) showed any discrepancy and both were at the *BCL6* locus. One discrepancy was due to necrosis of the CNB specimen causing a false negative *BCL6* FISH result when compared to the FNAB cell block that demonstrated a *BCL6* rearrangement.

Discussion: FISH showed a similar hybridization failure rate in all biopsy types. Ultimately, *MYC*, *BCL2*, or *BCL6* FISH showed 96% concordance when compared across paired cytology and surgical specimens, suggesting FNAB with cell block is equivalent to other biopsy alternatives for evaluation of DLBCL or HGBCL FISH testing.

KEYWORDS

diffuse large B-cell lymphoma, high-grade B-cell lymphoma, double-hit lymphoma, FISH, *BCL2* rearrangement, *MYC* rearrangement

1 Introduction

An important subset of diffuse large B-cell lymphoma (DLBCL) and high-grade B-cell lymphoma (HGBCL) have *MYC* and *BCL2* rearrangements. Large B-cell lymphoma or high-grade B-cell lymphoma with *MYC* and *BCL2* rearrangements are commonly referred to as "double-hit" lymphoma (DHL), which portends more aggressive clinical behavior and inferior progression-free survival compared to other cases of diffuse large B-cell lymphoma, germinal center B-cell subtype, or other high-grade B-cell lymphoma (1–5). Both the 5th Edition of the World Health Organization Classification of Haematolymphoid tumors (WHO5) (6) and the International Consensus Classification of Lymphoid Neoplasms (ICC) (7) now classify diffuse large B-cell lymphoma and high-grade B-cell lymphoma with concurrent *MYC* and *BCL6* "double-hit" lymphomas separately due to the unclear prognostic significance of this combination, with some studies not showing distinct biology for these cases (1, 2), but other studies demonstrating an association with a poor outcome (3, 8–11). Fluorescence *in situ* hybridization (FISH) is a frequently used technique to detect *MYC*, *BCL2*, and *BCL6* rearrangements. Because diffuse large B-cell lymphoma and other high-grade B-cell lymphoma can look identical morphologically to "double-hit"

lymphoma, at a minimum *MYC* FISH must be obtained in every case (see Figure 1 for an example of a case that has similar morphology to diffuse large B-cell lymphoma, NOS on various slide stain preparations, but ended up having both *MYC* and *BCL2* rearrangements). In one survey of cytogenetics laboratories, the most common test strategy (67%) was upfront testing of *MYC*, *BCL2*, and *BCL6* FISH on every case while fewer labs (26%) performed *BCL2* and *BCL6* FISH testing only if *MYC* is rearranged (12). In the same survey study, 56% of laboratories performed *MYC* break-apart probe (BAP) in combination with *IGH/MYC* dual fusion probe while 43% of laboratories performed only *MYC* BAP. *MYC* and *BCL2* IHC are known to be poor predictors of *MYC* rearrangements at the gene level and polymorphisms have even been shown to create false negative *MYC* IHC results (13). Data are less clear regarding *MYC* and *BCL6* rearrangements, but many institutions continue to test for *BCL6* rearrangements given some data indicating these cases may have an inferior outcome (3, 8–11).

Fine needle aspiration biopsy (FNAB) is increasingly used for triage of lymphadenopathy and diagnosis of lymphoma. Additionally, cell blocks (CB) and smear slides from FNAB can effectively be used for FISH in various neoplasms (14–17). However, only a few, small single institutional studies have described FISH

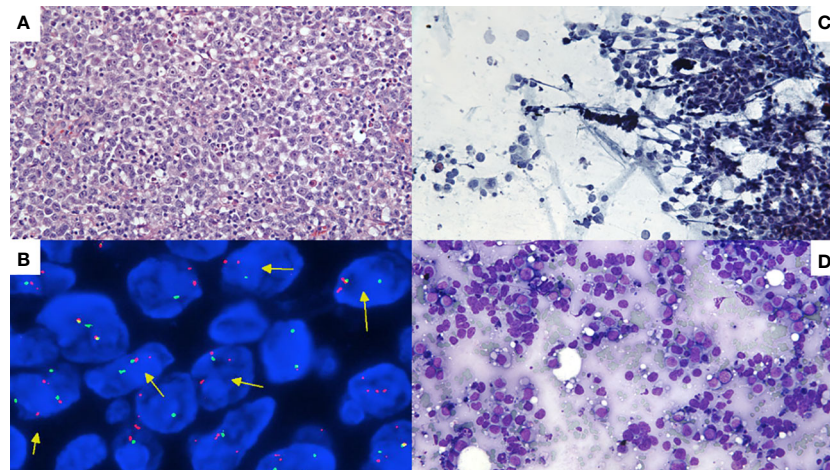


FIGURE 1

(A) H&E-stained section of lymph node cell block demonstrating effacement by high-grade B-cell lymphoma with *MYC* and *BCL2* rearrangements. (B) *MYC* interphase FISH showing separation of orange and green signals indicating a *MYC* rearrangement (see arrows). (C) Pap-stained smear slide showing aggregates of large atypical lymphoid cells. (D) May-Grünwald Giemsa (MGG)-stained smear slide of cytology smear slide similarly showing large cells. In general, Pap stains and MGG stains are complementary and helpful to obtain in all lymph node FNAB: Pap-stained slides demonstrate greater nuclear detail but make cells appear smaller and have poor cytoplasmic detail while May-Grünwald Giemsa stains show greater cytoplasmic detail and larger cell size but poor nuclear detail.

(such as *MYC*) in FNAB smears and cell block for lymphoma (18–21) and no comparisons to core biopsy or the gold standard excisional biopsy exist to our knowledge. We have two principal aims in this multi-institutional study of FISH performance in diffuse large B-cell lymphoma and high-grade B-cell lymphoma: 1) compare the success rate of *MYC*, *BCL2*, and *BCL6* FISH hybridization across FNAB with cell block, core biopsy, and excisional biopsy, 2) compare FNAB to either core biopsy or excisional biopsy for FISH from the same patient.

2 Materials and methods

Six academic medical centers participated in this study. The medical centers were assigned data access groups in REDCap (see section below on REDCap) and they consisted of Massachusetts General Hospital (MGH), Memorial Sloan Kettering Cancer Center (MSKCC), San Francisco Veterans Administration Health Care System (SFVAHCS), Stanford, University of California San Francisco (UCSF), and University of Virginia (UVA).

A retrospective search was conducted of the pathology informatics systems with keywords “FISH” AND “diffuse large B-cell lymphoma” OR “high-grade B-cell lymphoma” over the 10-year period from 1/1/2010 to 12/31/2019. A complementary search was performed of cytogenetics lab data for all *MYC* FISH studies performed on cytology samples to catch cases missed by the pathology data system and then identify paired surgical samples through the pathology archive. Only specimens that had *MYC* FISH performed were included (n=222); of these cases, 200 had *BCL2* FISH performed (90%) and 186 (84%) *BCL6* FISH performed. Exclusion criteria included bone marrow biopsy specimens (due to alternative fixation used in some of these specimens and decalcification that could cause false negatives), and body fluid

specimens (due to the numerous pre-analytic variables such as fixative type that might influence FISH performance in cell blocks). The age of the patient was recorded for each biopsy, but for Tables 1, 2, the age of the patient was determined as the age at the first biopsy specimen. The WHO4R classification terminology “high-grade B-cell lymphoma with *MYC* and *BCL2* and/or *BCL6* rearrangements” was originally used for “double hit” or “triple hit” cases in this patient biopsy cohort with an endpoint in 2019 irrespective of whether the morphology was more in keeping with diffuse large B-cell lymphoma or high-grade B-cell lymphoma (22). In keeping with the WHO5 and ICC, we subsequently distinguished *MYC* and *BCL2* rearranged cases from *MYC* and *BCL6* rearranged cases. This manuscript uses the terms high-grade B-cell lymphoma-*MYC/BCL2* or high-grade B-cell lymphoma-*MYC/BCL6* to distinguish these two groups regardless of whether the morphology was originally interpreted as diffuse large B-cell lymphoma or high-grade B-cell lymphoma.

All data extracted from pathology reports was entered into REDCap (Research Electronic Data Capture), a secure, encrypted online database. Study data were collected and managed using REDCap electronic data capture tools hosted at Stanford (23, 24). REDCap (Research Electronic Data Capture) is a secure, web-based software platform designed to support data capture for research studies, providing 1) an intuitive interface for validated data capture; 2) audit trails for tracking data manipulation and export procedures; 3) automated export procedures for seamless data downloads to common statistical packages; and 4) procedures for data integration and interoperability with external sources.

At Stanford Cytogenetics Laboratory, FISH was performed on formalin-fixed, paraffin-embedded (FFPE) sections; the area of interest was circled on the corresponding H&E stained slide by the ordering pathologist. ZytoLight (ZytoVision GmbH, Bremerhaven, Germany) break-apart probe sets were used for

TABLE 1 Clinical characteristics of all 208 patients included in study.

Number of patients	208
Age (mean (SD))	63.65 (16.55)
Gender = Male (%)	123 (59.1)
Gender = Female (%)	83 (40.3)
Data Access Group (%)	
MGH	25 (12.0)
MSKCC	13 (6.2)
SFVAHCS	13 (6.2)
Stanford	134 (64.4)
UCSF	21 (10.1)
UVA	2 (1.0)
History of B-cell non Hodgkin lymphoma? = Yes (%)	81 (39.3)
Prior large B cell lymphoma diagnosis (%)	23 (29.1)
DLBCL, NOS	22 (95.6)
Prior follicular lymphoma diagnosis (%)	52 (64.2)
Classic follicular lymphoma (grade 1–2)	42 (80.8)
Classic follicular lymphoma (grade 3A)	6 (11.5)
other or unknown	2 (3.8)
Primary cutaneous follicle center lymphoma	2 (3.8)
Prior diagnosis of low grade B cell lymphoma (%)	13 (16.5)
CLL/SLL	4 (30.8)
EMZL	2 (15.4)
LPL	2 (15.4)
Mantle cell lymphoma	1 (7.7)
NMZL	1 (7.7)
other or unknown	1 (7.7)
Primary cutaneous MZL	1 (7.7)
SMZL	1 (7.7)
High-grade B-cell lymphoma diagnosis (%)	4 (5.1)
Burkitt lymphoma	1 (25.0)
High grade B-cell lymphoma, with MYC and BCL2 rearrangements	1 (25.0)
High grade B-cell lymphoma, NOS	2 (50.0)
Prior solid organ or stem cell transplant (%)	16 (7.7)
Stem cell transplant	9 (56.2)
Solid organ transplant	7 (43.8)

(Continued)

TABLE 1 Continued

Number of patients	208
Prior chemotherapy (%)	52 (26.0)
Reason for chemotherapy (%)	
carcinoma	4 (7.7)
carcinoma and lymphoma	1 (1.9)
lymphoma	46 (88.5)
other or unknown	1 (1.9)

The classification used for all diagnoses was the WHOR4, which is equivalent to WHO5 and ICC for these diagnoses. Abbreviations used: CLL/SLL (chronic lymphocytic leukemia/small lymphocytic lymphoma), EMZL (extranodal marginal zone lymphoma), LPL (lymphoplasmacytic lymphoma), NMZL (nodal marginal zone lymphoma), MZL (marginal zone lymphoma), SMZL (splenic marginal zone lymphoma), MGH (Massachusetts General Hospital), MSKCC (Memorial Sloan Kettering Cancer Center), SFVAHCS (San Francisco Veterans Administration Health Care System), UCSF (University of California San Francisco), UVA (University of Virginia).

MYC, *BCL2*, and *BCL6* FISH. The *MYC* probe set was used with orange probe 5' to *MYC* and green probe 3' to *MYC* on 8q24.21. *BCL2* (18q21) probe set included 3'*BCL2* in green and 5'*BCL2* in orange. The same probe configuration was used for *BCL6* (3q27): 3'*BCL6* is green, 5'*BCL6* is orange. All FISH results were scored in 100 interphase cells. A rearrangement was reported if 10% or more cells showed a split signal. The results of these FISH tests were compared to existing FISH results on a different specimen when available. Paired specimens were either obtained from the same anatomic site or from contiguous sites e.g. neck lymph node draining the thyroid or CNS lymphoma spreading to the eye.

At the MSKCC, FISH analyses for *MYC*, *BCL2*, and *BCL6* (Abbott Molecular, Des Plaines, IL) were performed following a standard protocol, as previously described (25). The area of interest was usually circled on the slide, and the cytogenetics lab staff reviewed the slide to confirm a tumor-rich area was tested in all cases. For each probe set, 100 interphase cells were analyzed. A rearrangement was reported if 10% or more cells showed a split signal.

At UCSF, FISH analysis was performed on formalin-fixed paraffin-embedded (FFPE) tissue sections. The area of interest was circled by the ordering pathologist. Abbott Vysis Dual Color Break Apart probe sets (Des Plaines, IL) were used and FISH was set up according to the probe manufacturer's instructions (<https://www.molecular.abbott/int/en/vysis-fish-knowledge-center/fish-on-isolated-nuclei-from-paraffin>). FISH signals were imaged and analyzed using MetaSystems software (Medford, MA). For each probe set, 50 interphase cells were analyzed. A *MYC*, *BCL2*, or *BCL6* rearrangement was reported if 6.0% or more of cells showed split signals.

At SFVAHCS, *MYC*, *BCL2*, and *BCL6* FISH were performed at Quest Diagnostics in San Juan Capistrano, CA. Because this was an external lab, the area to perform FISH was not specified or circled. FISH was performed using the probes specific for 3q27 (*BCL6*), 8q24.1 (*MYC*), 14q32.3 (*IGH*), and 18q21.1 (*BCL2*) [Abbott Molecular and SureFISH, Agilent DAKO]. The cutoff values for *BCL6* rearrangement, *MYC* rearrangement, and t(14;18) in the

TABLE 2 Pathologic characteristics and FISH results of all 222 specimens compared across different biopsy types (fine needle aspiration biopsy, core needle biopsy, and excisional biopsy) with p values.

	Fine needle aspiration biopsy	Core needle biopsy	Excisional biopsy	P value
Number	46	112	64	
Age (mean (SD))	64.47 (15.70)	65.00 (16.66)	60.38 (15.81)	0.178
Gender (%)				0.209
Female	19 (41.3)	42 (37.5)	31 (48.4)	
Male	27 (58.7)	70 (62.5)	33 (51.6)	
Data Access Group (%)				<0.001
MGH	2 (4.3)	19 (17.0)	6 (9.4)	
MSKCC	4 (8.7)	12 (10.7)	0 (0.0)	
SFVAHCS	6 (13.0)	6 (5.4)	1 (1.6)	
Stanford	20 (43.5)	66 (58.9)	54 (84.4)	
UCSF	14 (30.4)	7 (6.2)	3 (4.7)	
UVA	0 (0.0)	2 (1.8)	0 (0.0)	
Indication (%)				<0.001
Additional diagnostic tissue	1 (2.2)	15 (13.4)	27 (42.2)	
Additional tissue for ancillary studies	0 (0.0)	1 (0.9)	2 (3.1)	
Clinical trial	0 (0.0)	1 (0.9)	0 (0.0)	
Initial diagnosis	27 (58.7)	38 (33.9)	11 (17.2)	
Other/unknown	0 (0.0)	2 (1.8)	0 (0.0)	
R/o recurrence	10 (21.7)	19 (17.0)	7 (10.9)	
R/o transformation	7 (15.2)	36 (32.1)	15 (23.4)	
Staging	1 (2.2)	0 (0.0)	2 (3.1)	
Tissue site (%)				0.832
Bone	1 (2.2)	6 (5.4)	2 (3.1)	
Lymph node or related	29 (63.0)	60 (53.6)	41 (64.1)	
Mediastinum	1 (2.2)	6 (5.4)	2 (3.1)	
Organ	7 (15.2)	23 (20.5)	7 (10.9)	
Other or unknown	1 (2.2)	2 (1.8)	2 (3.1)	
Soft tissue	7 (15.2)	15 (13.4)	10 (15.6)	
Final WHO diagnosis (%)				0.206
Burkitt	1 (2.2)	3 (2.7)	1 (1.6)	
DLBCL	31 (67.4)	85 (75.9)	57 (89.1)	
HGBCL	4 (8.7)	3 (2.7)	2 (3.1)	
HGBCL-MYC/BCL2	7 (15.2)	10 (8.9)	2 (3.1)	
Other/unknown	3 (6.5)	8 (7.1)	0 (0.0)	
PMLBCL	0 (0.0)	2 (1.8)	1 (1.6)	
TCHRLBCL	0 (0.0)	1 (0.9)	1 (1.6)	
MYC FISH (%)				0.527

(Continued)

TABLE 2 Continued

	Fine needle aspiration biopsy	Core needle biopsy	Excisional biopsy	P value
negative	33 (71.7)	86 (76.8)	55 (85.9)	
not done	0 (0.0)	0 (0.0)	1 (1.6)	
positive	11 (23.9)	21 (18.8)	7 (10.9)	
unsuccessful	1 (2.2)	3 (2.7)	0 (0.0)	
variant 3' signal loss	1 (2.2)	1 (0.9)	1 (1.6)	
variant extra 5' signaling	0 (0.0)	1 (0.9)	0 (0.0)	
<i>BCL2</i> FISH (%)				0.274
extra <i>BCL2</i> signal on add(3)	0 (0.0)	0 (0.0)	1 (1.6)	
negative	28 (60.9)	60 (53.6)	41 (64.1)	
not done	6 (13.0)	14 (12.5)	2 (3.1)	
positive	12 (26.1)	36 (32.1)	20 (31.2)	
unsuccessful	0 (0.0)	2 (1.8)	0 (0.0)	
<i>BCL6</i> FISH (%)				0.718
negative	31 (67.4)	70 (63.1)	40 (62.5)	
not done	7 (15.2)	20 (18.0)	9 (14.1)	
positive	8 (17.4)	18 (16.2)	13 (20.3)	
unsuccessful	0 (0.0)	2 (1.8)	0 (0.0)	
variant 5' signal loss	0 (0.0)	1 (0.9)	2 (3.2)	

CNB (core needle biopsy), DLBCL (diffuse large B-cell lymphoma), EB (excisional biopsy), FNAB (fine needle aspiration biopsy), HGBCL (high-grade B-cell lymphoma, NOS), HGBCL-MYC/*BCL2* (high-grade B-cell lymphoma with *MYC* and *BCL2* rearrangements), PMLBCL (primary mediastinal large B-cell lymphoma), TCHRLBCL (T-cell, histiocytic-rich large B-cell lymphoma), MGH (Massachusetts General Hospital), MSKCC (Memorial Sloan Kettering Cancer Center), SFVAHCS (San Francisco Veterans Administration Health Care System), UCSF (University of California San Francisco), UVA (University of Virginia).

paraffin-embedded tumor tissue are 11%, 15%, and 3%. For each probe set, 100 cells were analyzed.

At MGH, FISH was performed on 5-micron sections of FFPE tissue; an H&E section was reviewed to select regions for hybridization that contained a majority of tumor cells. Break-apart probes (*MYC*: Vysis LSI *MYC* Dual Color, Break Apart Rearrangement Probe; *BCL2*: Leica Kretech *BCL2* Proximal Green [18Q001B495] and *BCL2* Distal Red [18Q002B550] probes); *BCL6*: Leica Kretech *BCL6* Proximal Green [03Q008B495] and *BCL6* Distal Red [03Q007B550] probes) were hybridized and used to calculate the number of cells out of 50 scored containing a rearrangement. A rearrangement was reported if more than 15% of cells showed split signals.

3 Results

A total of 222 specimens from 208 unique patients were identified with a large/high-grade B-cell lymphoma diagnosis and performance of either *MYC*, *BCL2*, or *BCL6* FISH. The clinical characteristics of all patients are described in Table 1. The pathologic characteristics of all specimens are compared across different specimen types and corresponding p values in Table 2. The final large B-cell lymphoma diagnosis was established after FISH resulted e.g. high-grade B-cell lymphoma with *MYC* and *BCL2* rearrangements or Burkitt

lymphoma; the breakdown of different diagnoses can be seen under the header "Final WHO Diagnosis" in Table 2. A breakdown of the diagnoses in our cohort is shown in Figure 2.

The breakdown of biopsy specimens by data access group (assigned to academic medical centers as previously described), specimen type collected, and specimen type that had FISH performed is shown by a Sankey diagram in Figure 3. Despite the diversity and complexity of some specimen types, for instance, FNAB with cell block and core biopsy with varying degrees of imaging guidance, only three specimen types ultimately had FISH performed: cell block from FNAB, core biopsy, and surgical excisional or incisional biopsy. Most specimens with both a cell block from FNAB and core biopsy had FISH performed on the core biopsy with one specimen having FISH performed on the cell block. Most specimens undergoing FISH were lymph nodes (n=129), followed by non-nodal sites such as solid organs (n=37) or soft tissue (n=32), among others (see Table 2). Of the lymph nodes, most were cervical (n=37), retroperitoneal (n=21), inguinal (n=18), or axillary (n=15). All the indications for biopsy are shown in Table 2; the four most common indications were initial diagnosis (n=76), obtaining additional diagnostic tissue (n=43), evaluating for recurrence (n=36), and ruling out transformation (n=58).

FISH detected a *MYC* rearrangement in 39 of 217 specimens successfully tested (18%), no rearrangement in 174 specimens, 4

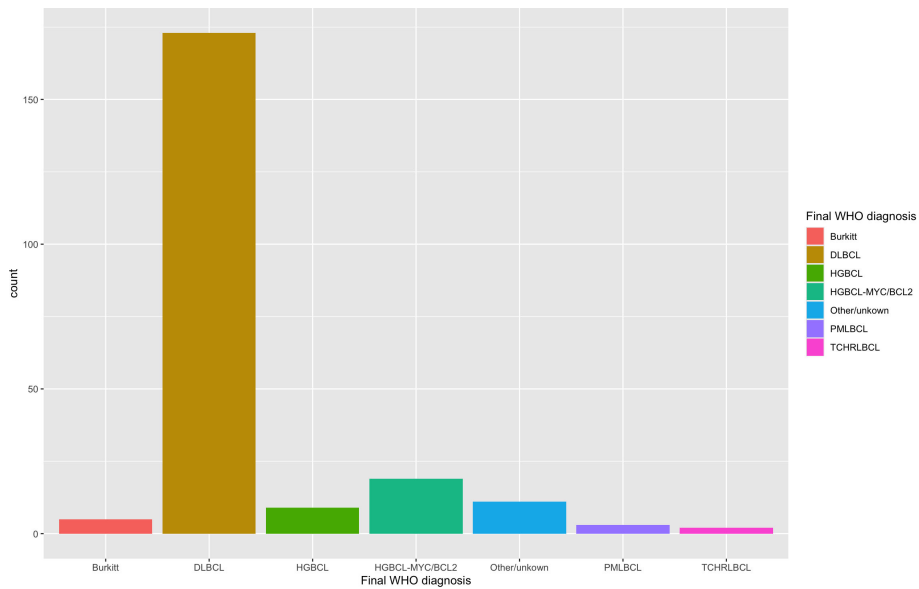


FIGURE 2 Diagnosis of all large B-cell lymphoma specimens with *MYC*, *BCL2*, and/or *BCL6* FISH performed. The diagnosis was retrieved retrospectively with FISH results already incorporated. Most cases were diffuse large B-cell lymphoma (DLBCL) (n=173). High-grade B-cell lymphoma with *MYC* and *BCL2* rearrangements (HGBCL-*MYC/BCL2*) (n=19) and high-grade B-cell lymphoma, NOS (HGBCL) (n=9) were smaller subsets. Burkitt lymphoma (n=5), primary mediastinal large B-cell lymphoma (PMLBCL; n=3) and T-cell, histiocyte-rich large B-cell lymphoma (TCHRLBCL; n=2) were rare in this cohort.

variant *MYC* FISH results (three with 3' signal loss and one with extra 5' signaling), and 4 unsuccessful hybridizations (Figure 4). One specimen was not evaluated for *MYC* FISH but was evaluated for *BCL2* and *BCL6* FISH; this specimen was included in this study because the patient had a prior biopsy in this cohort that was evaluated for a *MYC* rearrangement, and the additional biopsy was to obtain more tissue for ancillary testing. FISH detected *BCL2* rearrangements in 68 of 198

specimens successfully tested (34%), did not show a rearrangement in 129 specimens, 1 extra signal *BCL2* FISH result on an add(3), 2 unsuccessful hybridizations and 22 specimens without any *BCL2* FISH performed (Figure 5). *BCL2* rearrangements were detected in 20 of 37 *MYC* rearranged cases (54%), and these “double-hit” lymphomas are described in the next paragraph. FISH detected *BCL6* rearrangements in 39 of 183 specimens successfully tested (21%), did not show a

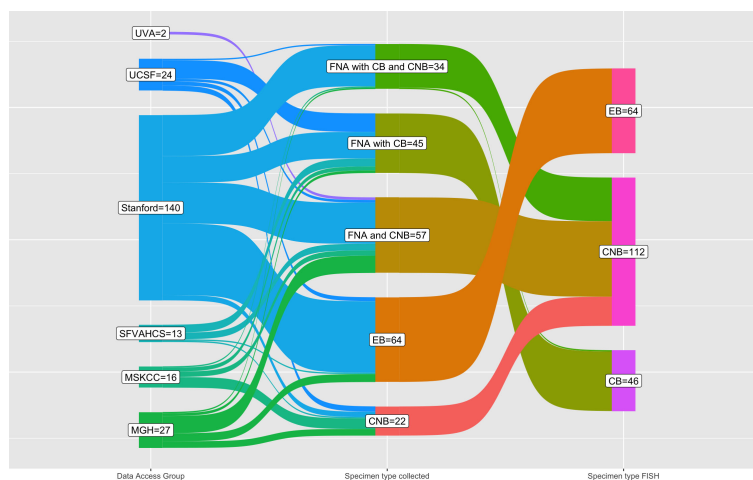


FIGURE 3 Sankey diagram of specimen type collected and specimen type undergoing FISH testing by institution (data access group). Of all the 222 specimens that underwent FISH testing in this cohort (right column), the majority are core biopsy, followed by excisional biopsy, and cell block. The core biopsy that have FISH performed include, of course, core biopsy only specimens but also FNAB with core biopsy and all FNA with cell block and core biopsy. One FNA with cell block and core biopsy had FISH performed on the cell block due to decalcification of the core biopsy (bone specimen). Abbreviations used: FNA (fine needle aspiration), CB (cell block from FNA), core biopsy (core needle biopsy), EB (excisional biopsy), MGH (Massachusetts General Hospital), MSKCC (Memorial Sloan Kettering Cancer Center), SFVAHCS (San Francisco Veterans Administration Health Care System), UCSF (University of California San Francisco), UVA (University of Virginia).

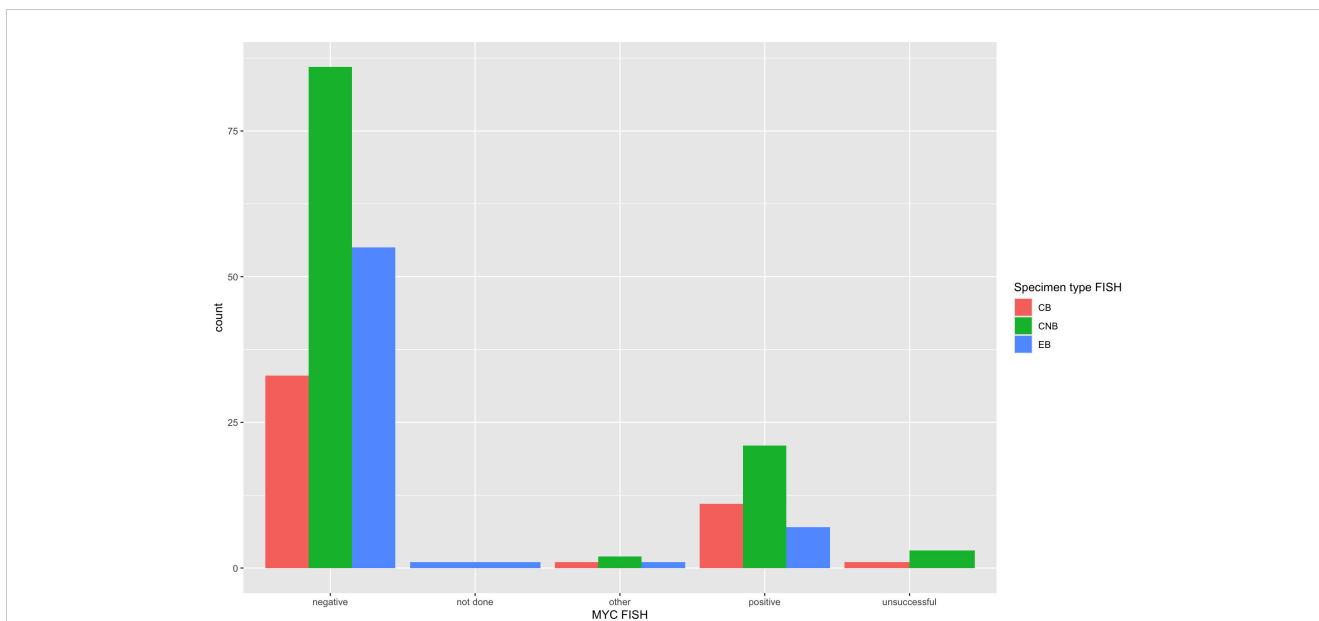


FIGURE 4 MYC FISH results across specimen types. MYC FISH results from all 222 specimens are arranged per specimen type that had FISH performed. MYC was rearranged in 18% of specimens and showed 4 “other” variant MYC FISH results, which included 3 specimens with 3’ signal loss and 1 with extra 5’ signaling. The unsuccessful or hybridization failure rate was overall low at 1.8% and similar across specimen types.

rearrangement in 141 specimens, 3 specimens with variant 5’ *BCL6* signal loss patterns, 2 unsuccessful hybridizations, and 36 specimens without any *BCL6* FISH performed. The hybridization failure rate was low for MYC (4 of 221 or 1.8%), *BCL2* (2 of 200 or 1.0%), and *BCL6* (2 of 185 or 1.1%) probes. Of the 8 unsuccessful hybridizations, 5 (63%) showed tissue limitations such as crush artifact, fibrosis, necrosis, and paucicellularity. FISH results across different biopsy types are shown in Table 2.

Concurrent MYC and *BCL2* rearrangements were detected in 20 of the 197 specimens (10%) that had FISH successfully performed at both MYC and *BCL2* loci; for 19 of these 20 specimens, this result established the diagnosis as high-grade B-cell lymphoma with MYC and *BCL2* rearrangements (high-grade B-cell lymphoma-MYC/*BCL2*). One case was indeterminate due to the morphologic differential diagnosis of high-grade B-cell lymphoma-MYC/*BCL2* versus follicular lymphoma with MYC and *BCL2* rearrangements,

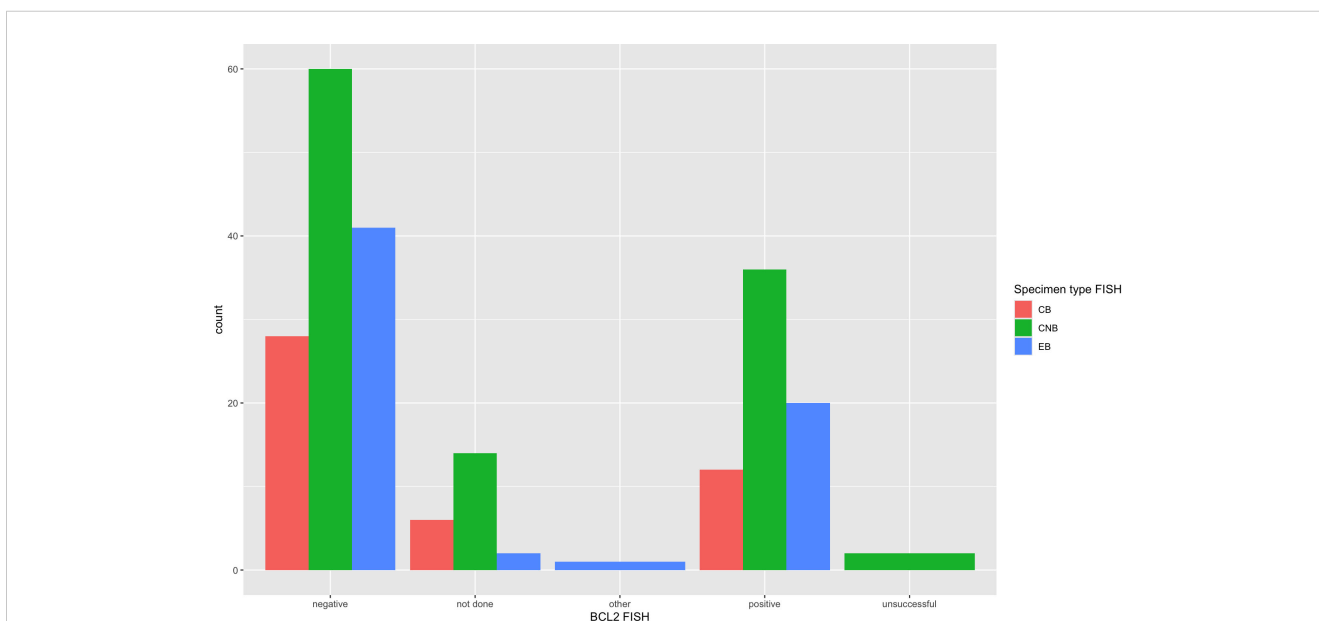


FIGURE 5 *BCL2* FISH results across specimen types. *BCL2* FISH results from all 222 specimens are arranged per specimen type that had FISH performed. *BCL2* was rearranged in 34% of cases by FISH and showed 1 “other” variant result with 1 extra signal *BCL2* FISH result on an add(3). The unsuccessful or hybridization failure rate was low at 1.0% and similar across specimen types.

which is not regarded as equivalent to “double-hit” lymphoma according to WHO5/ICC. Of note, 4 additional cases (4 of 197 or 2%) had variant *MYC* FISH results, including 3 with 3' signal loss and 1 with extra 5' signaling. All four of these cases with variant *MYC* FISH results also had *BCL2* rearrangements, raising the possibility of high-grade B-cell lymphoma with *MYC* and *BCL2* rearrangements, without a definitive diagnosis. Of the “double-hit” lymphoma cases, 7 had FISH performed on FNA cell blocks, 10 had FISH on core biopsies, and 2 had FISH on the excisional biopsy. The clinical indications for these biopsy specimens were as follows: 7 for ruling out transformation, 7 for initial diagnosis, 4 for ruling out recurrence, and 1 for additional diagnostic tissue. Of note, one of the 19 “double-hit” lymphoma cases showed rearrangements with all three FISH probes *MYC*, *BCL2*, and *BCL6*, which falls in the same diagnostic category as cases with *MYC* and *BCL2* rearrangements only but has been called “triple-hit” lymphoma in the literature. Three specimens of 182 (1.6%) showed *MYC* and *BCL6* rearrangements, which according to the ICC, is diagnostic of the provisional entity high-grade B-cell lymphoma with *MYC* and *BCL6* rearrangements. The WHO5 classification does not recognize this provisional entity but addresses the need for additional data in this patient group.

Of the 222 specimens with FISH performed, 16 paired cytology and surgical specimens were identified from 8 different patients (each patient had exactly one set of paired specimens). An additional 9 patients with paired cytology and surgical biopsy specimens were identified at one institution (Stanford) that had FISH performed on only one set of the pair; completion FISH was performed at Stanford on a research basis on the specimen missing FISH to enlarge the paired specimen cohort. In total, 34 paired specimens were analyzed from 17 patients (Table 3). The 17 cytology cases included 13 FNAB with cell block and 4 FNAB with cell block and core biopsy (listed as core biopsy in Table 3, because FISH was performed on the core biopsy). The 17 surgical cases were 10 excisional biopsies, 6 core biopsies, and 1 small bowel resection. Of the 102 possible FISH tests (3 different FISH loci across 34 paired specimens), *MYC*, *BCL2*, or *BCL6* FISH was performed in 100 instances (98%). Patient 13 only had *BCL2* FISH performed in both specimens and thus *MYC* and *BCL6* FISH results were not comparable (Table 3). Out of the 49 comparisons drawn between these 98 paired FISH tests, 2 comparisons (4%) were discrepant: both showed a *BCL6* rearrangement in the FNA-cell block specimen but not in the paired excisional biopsy from patient 3 or core biopsy from patient 10 (see Table 3). No *MYC* or *BCL2* rearrangements were present in any of the discrepant samples. The date of specimens was closely matched for the discrepant pairs, including differences of 5 days and 10 days between the acquisition of the cytology specimen and the surgical specimen. Both patients had the same lymph node sampled by FNA and excisional biopsy or core biopsy. For patient 10, necrosis was noted in the core biopsy with the negative *BCL6* FISH.

4 Discussion

4.1 *MYC*, *BCL2*, and *BCL6* FISH demonstrate highly successful hybridization rates across all specimen types with no statistically significant difference noted between FNAB, core biopsy, and surgical excisions. Tissue limitations may explain the rare failures

The FISH failure rate was low for all three FISH probes: 1.8% for *MYC* (4 of 220), 1.0% for *BCL2* (2 of 208), and 1.1% for *BCL6* (2 of 187). The hybridization rate is essentially the same across small-volume specimens such as FNAB cell block and core biopsy and larger-volume specimens such as an excisional biopsy with a statistically non-significant p-value across all three specimen types (see Table 2). Figures 4, 5 also demonstrate the breakdown of *MYC* and *BCL2* FISH results across various specimen types and graphically show that hybridization failure rates are low and similar across specimen types. The 8 FISH probe failures were from 6 specimens (one case had failure at all three FISH probes). These 6 specimens consisted of 5 core biopsies (all of which also had FNABs and one of which also had a cell block) and 1 cell block from FNAB. Five of the 6 specimens with failed FISH attempts were noted to have tissue limitations such as crush artifact, fibrosis, necrosis, and paucicellularity, any or all of which may partially explain why these cases had probe hybridization failure.

4.2 High-grade B-cell lymphoma with *MYC* and *BCL2* rearrangements was identified across all specimen types

MYC FISH detected a rearrangement in 18% of specimens, which is similar to prior series (1, 8, 9, 26, 27). High-grade B-cell lymphoma with *MYC* and *BCL2* rearrangements comprised 9% of all large B-cell lymphoma specimens in our cohort, typical of the 8–10% rate reported in the literature (10, 28). Identification of this subset is critical due to the more aggressive clinical behavior that prompts more aggressive therapy. Figure 1 illustrates images from a case that was called diffuse large B-cell lymphoma at diagnosis but was later refined to HGBL-*MYC/BCL2* based on FISH results; the images demonstrate three preparations routinely made for FNAB samples of lymph nodes in many cytopathology practices—H&E-stained section of cell block, Pap-stained smear slide (alcohol fixed), and May-Grünwald Giemsa-stained slide (air dried). *MYC* break-apart FISH was performed on the cell block of this FNAB specimen and is depicted. Morphology and even immunohistochemistry are poor predictors of high-grade B-cell lymphoma-*MYC/BCL2*, and FISH or other comparable fusion detection assay such as targeted or whole genome next generation sequencing (12, 29, 30), RNA based sequencing (31), or integrated

TABLE 3 FISH results from 17 paired FNAB or core biopsy and surgical samples are displayed.

Patient	Biopsy 1					Biopsy 2				
	site	Biopsy type	MYC	BCL2	BCL6	site	Biopsy type	MYC	BCL2	BCL6
1	Left axillary	FNA-CB	1	0	0	Lymph nodes (Floor of mouth)	EB	1	0	0
2	Lymph node, left supraclavicular	FNA-CB	0	1	0	Left supraclavicular mass	EB	0	1	0
3	Lymph node, left neck	FNA-CB	0	0	1	Left neck node	EB	0	0	0
4	Lymph node, left neck level 2	FNA-CB	0	0	0	Neck level 2 lymph nodes	EB	0	0	0
5	Right cervical level 2 lymph node	FNA-CB	0	0	0	Lymph node, right neck	EB	0	0	0
6	Left neck lymph node	FNA-CB	0	0	0	Lymph node, left neck	EB	0	0	0
7	Left thyroid	FNA-CB	1	0	1	Left level 5 lymph nodes	EB	1	0	1
8	Lymph node, axillary	FNA-CB	1	0	0	Lymph node, cervical	EB	1	0	0
9	Vitreous	FNA-CB	0	0	0	Brain	EB	0	0	0
10	Lymph node, axillary	FNA-CB	0	0	1	Lymph node, axillary	CNB	0	0	0
11	Lymph node, inguinal	FNA-CB	0	0	0	Lymph node, inguinal	CNB	0	0	0
12	Bone	FNA-CB	1	1	0	Bone	CNB	1	1	0
13	Soft tissue, other or unknown	FNA-CB	0	1	0	Chest wall	CNB	ND	1	ND
14	Right lower quadrant abdomen	CNB	1	0	0	Small Bowel	Resection	1	0	0
15	Pelvis	CNB	0	0	0	Iliac lymph node biopsy	EB	0	0	0
16	Mesentery	CNB	0	1	0	Lymph node, left mesenteric	CNB	0	1	0
17	Left abdominal wall	CNB	0	0	0	Left abdominal mass	CNB	0	0	0

FISH results are reported qualitatively as 0 (negative), 1 (positive), or ND (not done). FISH results are colored green for concordance between small volume biopsy and surgical, red for discordance, and yellow for indeterminate because both specimens were not tested for the same probe. All cases are matched for anatomic site. Two discrepancies were noted between an FNA with cell block (FNA-CB) and surgical case (see BCL6 FISH result for patient 3 and 10); the discrepancy for patient 10 is likely attributable to necrosis noted on the core biopsy specimen causing a false negative FISH result.

FNAB-CB (fine needle aspiration biopsy with cell block), CNB (core needle biopsy), EB (excisional biopsy).

DNA/RNA sequencing (32) must be performed to identify this important subset of large B-cell lymphoma (28).

Rare variant signal patterns were found with both *MYC* and *BCL2* FISH probes, including signal loss and gain. Our cohort includes 3 patients with variant 3'*MYC* loss and 1 patient with 5'*MYC* poly-signaling; all the patients in our cohort with variant *MYC* signaling had concurrent *BCL2* rearrangements, raising the possibility of whether these were “double-hit” lymphoma. In general, a scarcity of literature and clinical outcomes about these rare cases exists (33). Copy number variations of *MYC* and *BCL2* have been previously shown to have different biology than structural rearrangements of both genes (13). Another study of variant *MYC* translocations in aggressive B-cell lymphomas found patients with 5'*MYC* gain were more refractory to chemotherapy or had an early relapse with a median event-free survival of only 6 months compared to patients with 3'*MYC* deletion who often responded to chemotherapy and had an event-free survival of 24 months (34). This study suggested based on survival data and the presence of *IGH/MYC* fusions or other *IGK*, *IGL* rearrangements in a subset that 5'*MYC* gain likely represents an unbalanced *MYC* rearrangement whereas the 3'*MYC* deletions were likely unrelated to *MYC* rearrangement. Based on this data, our cases with 3'*MYC* signal loss should be excluded from the “double-hit” lymphoma category. This data also suggests our 5'*MYC* gain case could be included in “double-hit” lymphoma, but given the overall lack of data and consensus in the literature at this point, the 5'*MYC* gain case was not included in the “double-hit” lymphoma category for our study.

High-grade B-cell lymphoma with *MYC* and *BCL6* rearrangements was much less common in our cohort with 3 cases out of 182 specimens rearranged at both loci (1.6%). As previously mentioned, the significance of these cases is currently controversial. Some studies have not shown distinct biology for these cases (1, 2), but other studies have found an association with a poor outcome (3, 8–11). An additional 3 specimens show variant *BCL6* rearrangements, all 5'*BCL6* signal loss, but these specimens were *MYC* FISH negative. Additional studies are needed to further clarify the biology, clinical outcomes, and significance of these cases.

FISH may fail to identify a subset of diffuse large B-cell lymphoma and high-grade B-cell lymphoma that have inferior clinical outcomes. Gene expression profiling of germinal center B-cell diffuse large B-cell lymphoma can identify a double hit-like signature and inferior outcomes, but only half of these cases have structural rearrangements that can be detected by routine *MYC* and *BCL2* break-apart FISH (5). Whole genome sequencing of these cases revealed cryptic *MYC* and *BCL2* rearrangements, copy number gains and amplifications of *MYC* and *MIR17HG*, and focal deletions of the *PVT1* promoter (5). While other technologies in the future may more effectively detect biologically equivalent “double-hit” lymphoma, FISH currently remains the current clinical gold standard for detecting “double-hit” lymphoma.

4.3 Paired specimens demonstrate 96% concordance with *MYC*, *BCL2*, and *BCL6* FISH results across FNABs, core biopsies, and excisional biopsies

When matched for anatomic site and tissue limitations, paired cytology and surgical specimens in our study showed 96% concordance for FISH results (Table 3). Two FISH discrepancies were found and both showed the following pattern: *BCL6* rearrangement was detected in the FNAB while no *BCL6* rearrangement was detected in the paired surgical specimen. Necrosis was noted in the core biopsy from patient 10, and this core biopsy yielded a negative *BCL6* result, suggesting that this may be a false negative result. Because no *MYC* rearrangements were present in any of the discrepant samples, the diagnosis would not have changed whether a *BCL6* rearrangement was or was not present.

Overall, this paired data suggests that FNAB cell block is a reasonable alternative to core biopsy or even excisional biopsy for diffuse large B-cell lymphoma and high-grade B-cell lymphoma FISH testing. No *MYC* or *BCL2* FISH discrepancies were found in any pair and, therefore, assessment for “double-hit” lymphoma would not have changed. The only discrepancies between paired samples were at the *BCL6* FISH locus; one of these discrepancies ultimately was attributed to a confounding variable described above.

A major limitation of this study is the heterogeneity of this retrospective and multi-institutional data set, which may limit applicability to some cytogenetic labs and pathology practice settings. Each institution used a different FISH lab with different probe sets and acquisition systems, different split signal thresholds for establishing the presence of a rearrangement, different numbers of interphase cells analyzed, and so on; these differences are reflected in the methods section. The biopsy specimens also have variable indications, which range from initial diagnosis to recurrence or transformation in the post-therapy setting. The data was collected from academic medical centers with highly specialized proceduralists and pathologists subspecializing in cytopathology and hematopathology, which may limit applicability to the community practice setting.

5 Conclusions

MYC, *BCL2*, and *BCL6* FISH have highly successful hybridization rates that are similar across different specimen types in this cohort, including FNAB, core biopsy, and excisional biopsy. High-grade B-cell lymphoma with *MYC* and *BCL2* rearrangements was detected in 9% of all large B-cell lymphoma specimens, including one case with rearrangements at all three loci *MYC*, *BCL2*, and *BCL6*; *MYC* and *BCL6* rearrangements were found in 1.6% of specimens. No significant difference was found across biopsy types. Paired cytology and surgical specimens

demonstrated 96% concordance at all three *MYC*, *BCL2*, and *BCL6* FISH loci. FNAB with cell block is an equally effective alternative to core biopsy and excisional biopsy for assessment of *MYC*, *BCL2*, and *BCL6* FISH, which is required for identification of the clinically aggressive subset of large B-cell lymphomas that carry both *MYC* and *BCL2* rearrangements.

Data availability statement

The raw data supporting the conclusions of this article will be made available by the authors, without undue reservation.

Ethics statement

The studies involving humans were approved by Stanford University IRB protocol 38992. The studies were conducted in accordance with the local legislation and institutional requirements. Written informed consent for participation was not required from the participants or the participants' legal guardians/next of kin in accordance with the national legislation and institutional requirements.

Author contributions

JM: Writing – review & editing, Writing – original draft, Visualization, Supervision, Software, Project administration, Methodology, Investigation, Formal analysis, Data curation, Conceptualization. UA: Writing – review & editing, Writing – original draft, Methodology, Data curation. CB: Writing – review & editing, Writing – original draft, Methodology, Data curation. SC: Data curation, Methodology, Writing – original draft, Writing – review & editing. SG: Data curation, Project administration, Writing – original draft, Writing – review & editing. RH: Conceptualization, Data curation, Supervision, Writing – original draft, Writing – review & editing. CK: Writing – review & editing, Writing – original draft, Supervision, Conceptualization. OL: Data curation, Supervision, Writing – original draft, Writing – review & editing, Conceptualization. SL: Conceptualization, Data curation, Supervision, Writing – original draft, Writing – review & editing. AL: Writing – review & editing, Writing – original draft, Supervision, Data curation, Conceptualization. JM: Formal analysis, Methodology, Software, Visualization, Writing – original draft, Writing – review & editing. YN: Supervision, Writing – original draft, Writing – review & editing. RR: Writing – original

draft, Writing – review & editing. ES: Writing – review & editing, Writing – original draft, Methodology, Investigation. JY: Data curation, Writing – original draft, Writing – review & editing. SZ: Data curation, Writing – original draft, Writing – review & editing. DG: Writing – review & editing, Writing – original draft, Visualization, Validation, Supervision, Software, Resources, Project administration, Methodology, Investigation, Funding acquisition, Formal analysis, Data curation, Conceptualization.

Funding

The author(s) declare financial support was received for the research, authorship, and/or publication of this article. REDCap was funded by Stanford CTSA award number UL1 TR001085 from NIH/NCRR. Value-Based Award in Pathology from Stanford Healthcare supported the additional FISH testing and data entry at Stanford. The work at Memorial Sloan Kettering Cancer Center was funded by Grant/Award Number P30CA008748.

Acknowledgments

The R code for statistical analysis was built on several packages such as R-package *ggsankey* by David Sjoberg, *ggplot2* by Hadley Wickham, *table one* by Kazuki Yoshida. These R packages were invaluable for statistical analysis of this data set.

Conflict of interest

The authors declare that the research was conducted in the absence of any commercial or financial relationships that could be construed as a potential conflict of interest.

Publisher's note

All claims expressed in this article are solely those of the authors and do not necessarily represent those of their affiliated organizations, or those of the publisher, the editors and the reviewers. Any product that may be evaluated in this article, or claim that may be made by its manufacturer, is not guaranteed or endorsed by the publisher.

References

- Cucco F, Barrans S, Sha C, Clipson A, Crouch S, Dobson R, et al. Distinct genetic changes reveal evolutionary history and heterogeneous molecular grade of DLBCL with *MYC/BCL2* double-hit. *Leukemia*. (2020) 34:1329–41. doi: 10.1038/s41375-019-0691-6
- Evrard SM, Péricart S, Grand D. Targeted next generation sequencing reveals high mutation frequency of CREBBP, *BCL2* and *KMT2D* in high-grade B-cell lymphoma with *MYC* and *BCL2* and/or *BCL6* rearrangements. *Haematologica*. (2019) 104(4):e154–7. doi: 10.1016/j.haem.2019.10.013
- Ennishi D, Jiang A, Boyle M, Collinge B, Grande BM, Ben-Neriah S, et al. Double-hit gene expression signature defines a distinct subgroup of germinal center B-cell-like diffuse large B-cell lymphoma. *JCO*. (2019) 37:190–201. doi: 10.1200/JCO.18.01583
- Sha C, Barrans S, Cucco F, Bentley MA, Care MA, Cummin T, et al. Molecular high-grade B-cell lymphoma: defining a poor-risk group that requires different approaches to therapy. *JCO*. (2019) 37:202–12. doi: 10.1200/JCO.18.01314

5. Hilton LK, Tang J, Ben-Neriah S, Alcaide M, Jiang A, Grande BM, et al. The double-hit signature identifies double-hit diffuse large B-cell lymphoma with genetic events cryptic to FISH. *Blood*. (2019) 134:1528–32. doi: 10.1182/blood.2019002600
6. Alaggio R, Amador C, Anagnostopoulos I, Attygalle AD, Araujo IBDO, Berti E, et al. The 5th edition of the world health organization classification of hematolymphoid tumors: lymphoid neoplasms. *Leukemia*. (2022) 36:1720–48. doi: 10.1038/s41375-022-01620-2
7. Campo E, Jaffe ES, Cook JR, Quintanilla-Martinez L, Swerdlow SH, Anderson KC, et al. The international consensus classification of mature lymphoid neoplasms: a report from the clinical advisory committee. *Blood*. (2022) 140:1229–53. doi: 10.1182/blood.2022015851
8. Li S, Desai P, Lin P, Yin CC, Tang G, Wang XJ, et al. *MYC / BCL 6* double-hit lymphoma (DHL): a tumor associated with an aggressive clinical course and poor prognosis. *Histopathology*. (2016) 68:1090–8. doi: 10.1111/his.12884
9. Ye Q, Xu-Monette ZY, Tzankov A, Deng L, Wang X, Manyam GC, et al. Prognostic impact of concurrent *MYC* and *BCL6* rearrangements and expression in *de novo* diffuse large B-cell lymphoma. *Oncotarget*. (2016) 7:2401–16. doi: 10.18632/oncotarget.6262
10. Rosenwald A, Bens S, Advani R, Barrans S, Copie-Bergman C, Elsensohn MH, et al. Prognostic significance of *MYC* rearrangement and translocation partner in diffuse large B-cell lymphoma: A study by the lunenburg lymphoma biomarker consortium. *JCO*. (2019) 37:3359–68. doi: 10.1200/JCO.19.00743
11. Pillai RK, Sathanoori M, Van Oss SB, Swerdlow SH. Double-hit B-cell lymphomas with *BCL6* and *MYC* translocations are aggressive, frequently extranodal lymphomas distinct from *BCL2* double-hit B-cell lymphomas. *Am J Surg Pathol*. (2013) 37:323–32. doi: 10.1097/PAS.0b013e31826cebad
12. Gagnon MF, Penheiter AR, Harris F, Sadeghian D, Johnson SH, Karagouga G, et al. Unraveling the genomic underpinnings of unbalanced *MYC* break-apart FISH results using whole genome sequencing analysis. *Blood Cancer J*. (2023) 13:190. doi: 10.1038/s41408-023-00967-8
13. Collinge B, Ben-Neriah S, Chong L, Boyle M, Jiang A, Miyata-Takata T, et al. The impact of *MYC* and *BCL2* structural variants in tumors of DLBCL morphology and mechanisms of false-negative *MYC* IHC. *Blood*. (2021) 137(16):2196–208. doi: 10.1182/blood.2020007193
14. Aisner DL, Sams SB. The role of cytology specimens in molecular testing of solid tumors: Techniques, limitations, and opportunities. *Diagn Cytopathol*. (2012) 40:511–24. doi: 10.1002/dc.22820
15. Aisner DL, Rumery MD, Merrick DT, Kondo KL, Nijmeh H, Linderman DJ, et al. Do more with less: tips and techniques for maximizing small biopsy and cytology specimens for molecular and ancillary testing: the university of colorado experience. *Arch Pathol Lab Med*. (2016) 140:1206–20. doi: 10.5858/arpa.2016-0156-RA
16. Jain D, Mathur SR, Iyer VK. Cell blocks in cytopathology: a review of preparative methods, utility in diagnosis and role in ancillary studies. *Cytopathology*. (2014) 25:356–71. doi: 10.1111/cyt.12174
17. Darras N, Mooney KL, Long SR. Diagnostic utility of fluorescence *in situ* hybridization testing on cytology cell blocks for the definitive classification of salivary gland neoplasms. *J Am Soc Cytopathol*. (2019) 8:157–64. doi: 10.1016/j.jasc.2019.01.006
18. Mayall F. Fine needle aspiration cytology in the diagnosis of uncommon types of lymphoma. *J Clin Pathol*. (2003) 56:821–5. doi: 10.1136/jcp.56.11.821
19. Monaco SE, Teot LA, Felgar RE, Surti U, Cai G. Fluorescence *in situ* hybridization studies on direct smears: An approach to enhance the fine-needle aspiration biopsy diagnosis of B-cell non-Hodgkin lymphomas. *Cancer Cytopathol*. (2009) 117:338–48. doi: 10.1002/cncy.20040
20. Zhang S, Abreo F, Lowery-Nordberg M, Veillon DM, Cotelingam JD. The role of fluorescence *in situ* hybridization and polymerase chain reaction in the diagnosis and classification of lymphoproliferative disorders on fine-needle aspiration. *Cancer Cytopathol*. (2010) 118:105–12. doi: 10.1002/cncy.20070
21. Karabachev AD, Brundage WJ, Sajisevi MB, Ciolino AL. Feasibility of fine needle aspiration for diagnosis of b-cell lymphoma of the thyroid: a case series and review of the literature. *Diagn Pathol*. (2023) 18:69. doi: 10.1186/s13000-023-01346-4
22. Swerdlow SH, Campo E, Pileri SA, Harris NL, Stein H, Siebert R, et al. The 2016 revision of the World Health Organization classification of lymphoid neoplasms. *Blood*. (2016) 127:2375–90. doi: 10.1182/blood-2016-01-643569
23. Harris PA, Taylor R, Thielke R, Payne J, Gonzalez N, Conde JG. Research electronic data capture (REDCap)—A metadata-driven methodology and workflow process for providing translational research informatics support. *J Biomed Informatics*. (2009) 42:377–81. doi: 10.1016/j.jbi.2008.08.010
24. Harris PA, Taylor R, Minor BL, Elliott V, Fernandez M, O'Neal L, et al. The REDCap consortium: Building an international community of software platform partners. *J Biomed Informatics*. (2019) 95:103208. doi: 10.1016/j.jbi.2019.103208
25. Yang SR, Aypar U, Rosen EY, Mata DA, Benayed R, Mullaney K, et al. A performance comparison of commonly used assays to detect *RET* fusions. *Clin Cancer Res*. (2021) 27:1316–28. doi: 10.1158/1078-0432.CCR-20-3208
26. Ennishi D, Mottok A, Ben-Neriah S, Shulha HP, Farinha P, Chan FC, et al. Genetic profiling of *MYC* and *BCL2* in diffuse large B-cell lymphoma determines cell-of-origin-specific clinical impact. *Blood*. (2017) 129:2760–70. doi: 10.1182/blood-2016-11-747022
27. Küstner A, Witte HM, Riedl J, Bernard V, Stölting S, Merz H, et al. Mutational landscape of high-grade B-cell lymphoma with *MYC*-, *BCL2* and/or *BCL6* rearrangements characterized by whole-exome sequencing. *haematol*. (2021) 107:1850–63. doi: 10.3324/haematol.2021.279631
28. Scott DW, King RL, Staiger AM, Ben-Neriah S, Jiang A, Horn H, et al. High-grade B-cell lymphoma with *MYC* and *BCL2* and/or *BCL6* rearrangements with diffuse large B-cell lymphoma morphology. *Blood*. (2018) 131:2060–4. doi: 10.1182/blood-2017-12-820605
29. Chong LC, Ben-Neriah S, Slack GW, Freeman C, Ennishi D, Mottok A, et al. High-resolution architecture and partner genes of *MYC* rearrangements in lymphoma with DLBCL morphology. *Blood Adv*. (2018) 2:2755–65. doi: 10.1182/bloodadvances.2018023572
30. Chapuy B, Stewart C, Dunford AJ, Kim J, Kamburov A, Redd RA, et al. Molecular subtypes of diffuse large B cell lymphoma are associated with distinct pathogenic mechanisms and outcomes. *Nat Med*. (2018) 24:679–90. doi: 10.1038/s41591-018-0016-8
31. Wang X, Johnson V, Johnson L, Cook JR. RNA-Based next generation sequencing complements but does not replace fluorescence *in situ* hybridization studies for the classification of aggressive B-Cell lymphomas. *Cancer Genet*. (2021) 252–253:43–7. doi: 10.1016/j.cancergen.2020.12.004
32. Cassidy DP, Chapman JR, Lopez R, White K, Fan YS, Casas C, et al. Comparison between integrated genomic DNA/ RNA profiling and fluorescence *in situ* hybridization in the detection of *MYC*, *BCL-2*, and *BCL-6* gene rearrangements in large B-cell lymphomas. *Am J Clin Pathol*. (2020) 153(3):353–9. doi: 10.1093/ajcp/aaqz172
33. Gagnon MF. *MYC* break-apart FISH probe set reveals frequent unbalanced patterns of uncertain significance when evaluating aggressive B-cell lymphoma. *Blood Cancer J*. (2021) 11(11):184. doi: 10.1038/s41408-021-00578-1
34. Tang G, Li S, Toruner GA, Jain P, Tang Z, Hu S, et al. Clinical impact of 5 *MYC* or 3 *MYC* gain/loss detected by FISH in patients with aggressive B-cell lymphomas. *Cancer Genet*. (2023) 272–273:1–8. doi: 10.1016/j.cancergen.2022.12.001