

Ceramic tiles waste as replacement material in Portland cement

María A. Mas

XXXXXXXXXX, Instituto de Ciencia y Tecnología del Hormigón (ICITECH), Universitat Politècnica de València, Valencia, Spain

José Monzó

XXXXXXXXXX, Instituto de Ciencia y Tecnología del Hormigón (ICITECH), Universitat Politècnica de València, Valencia, Spain

Jordi Payá

XXXXXXXXXX, Instituto de Ciencia y Tecnología del Hormigón (ICITECH), Universitat Politècnica de València, Valencia, Spain

Lucía Reig

XXXXXXXXXX, Departamento de Ingeniería Mecánica y Construcción (EMC), Universitat Jaume I, Castelló de la Plana, Spain

María V. Borrachero

XXXXXXXXXX, Instituto de Ciencia y Tecnología del Hormigón (ICITECH), Universitat Politècnica de València, Valencia, Spain

Q1

The pozzolanic reactivity of real ceramic waste from different tile manufacturing companies was evaluated and its suitability as a partial Portland cement replacement was analysed. The raw material was finely ground and physico-chemically characterised using x-ray fluorescence (XRF), x-ray diffraction (XRD), scanning electron microscopy (SEM) and laser analysis particle size distribution (ADL). Percentages of ceramic waste (from 15 wt% to 50 wt%) to substitute Portland cement were used to assess this material's pozzolanic behaviour, and samples were cured at 20°C for different curing times. pH tests and conductivity measurements were used to evaluate its pozzolanic character, while mortars were utilised to evaluate compressive strength behaviour. The microstructural evolution of the developed binders was assessed in pastes by XRD, thermal analysis, Fourier transform infrared spectroscopy (FTIR) and SEM analyses. A strength gain due to pozzolanic activity was observed after 28 d and 90 d curing. The results prove that mortars with up to 35 wt% of tile ceramic waste comply with the requirements established for fly ash pozzolanic materials.

Introduction

Portland cement clinker is the dominant binder used in concrete because of an abundance of raw materials, its relatively low cost and its excellent mechanical and durability properties. However, as reported by Meyer (2009), its production process is energy intensive (850 kcal per kilogramme of clinker) and emits a high level of carbon dioxide emissions to the atmosphere (about a tonne of carbon dioxide per tonne of cement). It has also been estimated that cement companies are responsible for the emission of about two billion tonnes of carbon dioxide per year, which is 6–7% of the planet's total carbon dioxide emissions (Meyer, 2009). The cement industry is looking for alternatives to overcome these problems and to comply with Kyoto protocol obligations by making more sustainable binders and reusing wastes from other industries. Among the different options analysed, the scientific community has incorporated industrial by-products such as silica fume, fly ash, ceramic materials, glass and so on into the production of mortars and concretes (Frías *et al.*, 2011; Lavat *et al.*, 2009; Naceri and Hamina, 2009; Payá *et al.*, 2002; Pereira de Oliveira *et al.*, 2012). As explained by Frías *et al.* (2012) and Payá *et al.* (1999), the development of cement matrices that contain industrial

by-products brings environmental, economic and technological benefits, since it

- avoids the disposal of waste materials and minimises the use of natural resources, which implies energy savings and, therefore, fewer carbon dioxide emissions
- allows the use of waste to replace higher cost materials
- improves some properties of mortars and concretes.

Some of these by-products are ceramic in nature and have been successfully used in concrete and cement production (Ay and Ünal, 2000; Medina *et al.*, 2012, 2013; Reig *et al.*, Q2 2013a, 2014; Shi *et al.*, 2011). Authors such as Medina *et al.* Q3 (2012a, 2012b, 2013a, 2013b) analysed the feasibility of using ceramic sanitary ware as a partial replacement for natural aggregates in concrete production. Contents of traditional coarse aggregates, ranging from 15 to 25 wt%, were substituted, and the microstructure, physical and mechanical properties, rheological and calorimetric behaviour, gas and water permeability of the developed concrete were analysed. Other types of ceramic waste such as bricks and sanitary ware (Alves *et al.*, 2014), construction and demolition waste (Bezerra Cabral *et al.*, 2010) and electrical insulators (Senthamarai *et al.*, 2011) have

PROOFS

also been successfully used as aggregates in concrete production. The suitability of other ceramic materials (e.g. red hollow bricks and ceramic tiles) as a source of aluminosilicate in alkali-activated binder production was also proved by Reig *et al.* (2013, 2014) and Sun *et al.* (2013). Similarly, Puertas *et al.* (2010) proposed the use of ceramic waste as a starting material for Portland cement manufacture while Silva *et al.* (2008) and Pereira de Oliveira *et al.* (2012) successfully proved the pozzolanic activity of ceramic materials. Different types of ceramic products (red clay brick waste, glass and tiles) were used by Pereira de Oliveira *et al.* (2012) to replace 10–40% Portland cement and 10% of red clay brick waste was used in the study reported by Silva *et al.* (2008). Although both studies reported the compressive strength evolution of the developed mortars, they provided very little information on the developed microstructure and the pozzolanic reaction.

As previously explained by Zanelli *et al.* (2011), the production process of ceramic materials determines the microstructure and phases developed, which greatly influence their potential reactivity. Among the different categories of ceramic products produced (structural products, tiles, sanitary ware, etc.), floor and wall ceramic tiles are produced in different temperature–time cycles, with peak firing temperatures usually falling within the range 1120–1220°C (García Ten, 2005). Global ceramic tile production has increased in recent years from 8581 million m² in 2009 to 11 913 million m² in 2013 (Stock, 2014). As reported by Stock (2014), Spain is the largest tile producer in the European Union and ranks fifth in global production, with 420 million m² made in 2013, which implies 3.5% of world production. It is the second largest exporting country in the world, with 318 million m² exported (75.7% of national production). As reported by Monfort *et al.* (2011), more than 215 companies related to the manufacturing process of ceramic tiles were registered in Spain in 2008; most (87%) were located in the Comunidad Valenciana (comprising Valencia, Alicante and Castellón in east Spain), which produced approximately 95% of the total national production. Ceramic waste is also generated in the construction sector: according to data from the Spanish National Institute of Statistics (2013), the construction sector in Spain produced 32.7 Mt tons of waste in 2011, of which about 54% was ceramics (GdE, 2010).

The objective of this research was to study the recycling of real ceramic waste arising from different tile manufacturing companies in order to produce pozzolanic cement. The properties of the ceramic waste were analysed and its pozzolanic reactivity was evaluated at different curing ages with replacements of various percentages of Portland cement.

Materials and methodology

Materials

The ceramic waste used in this study came from the Spanish tile ceramic industry and contained different types of tiles such

as wall, stoneware and porcelain stoneware tiles. Portland cement type CEM I 42.5R (containing 4.5% calcium carbonate), partially replaced (0–50 wt%) with tile ceramic waste (TCW), was used to prepare pastes and mortars.

As-received TCW was dried in an oven at 100°C for 48 h, crushed in a jaw crusher (BB200, Retsch) to obtain a particle size smaller than 2 mm and ground in a porcelain ball mill (Gabbrielli Mill-2) in alumina media (450 g of waste, 90 balls) for 25 min. The mean particle diameter, determined by laser diffraction (Mastersizer 2000, Malvern Instruments), came close to 17.28 µm, with 90%vol of particles (d_{90}) under 43.02 µm. As shown in Figure 1, irregularly shaped particles with a smooth surface and sharp edges were observed by scanning electron microscopy (SEM) (JEOL JSM-6300).

Table 1 indicates the chemical composition of the TCW, as determined by x-ray fluorescence (XRF) analysis (Philips Magix Pro). As can be seen in the table, the TCW contained high levels of silicon dioxide and aluminium oxide (79.82 wt%), together with moderate amounts of calcium oxide, iron oxide and potassium oxide. The amorphous content (soluble fraction), determined according to UNE EN 196-2 specifications, was 60 wt%, which is higher than that determined for red clay brick waste (35 wt%) (Reig *et al.*, 2013b) and porcelain stoneware tiles (46 wt%) (Reig *et al.*, 2014).

Mineralogical composition was determined by x-ray diffraction (XRD) (Bruker AXS D8 Advance with CuK α radiation, 40 kV and 20 mA, 2θ from 5° to 70°). The data in Figure 2 indicate that quartz (Q, SiO₂; powder diffraction file (PDF) #331161) is the major crystalline phase, with mullite (M, Al₆Si₂O₁₃; PDF #150776), albite (A, NaAlSi₃O₈; PDF #190926), and the calcium magnesium silicate known as

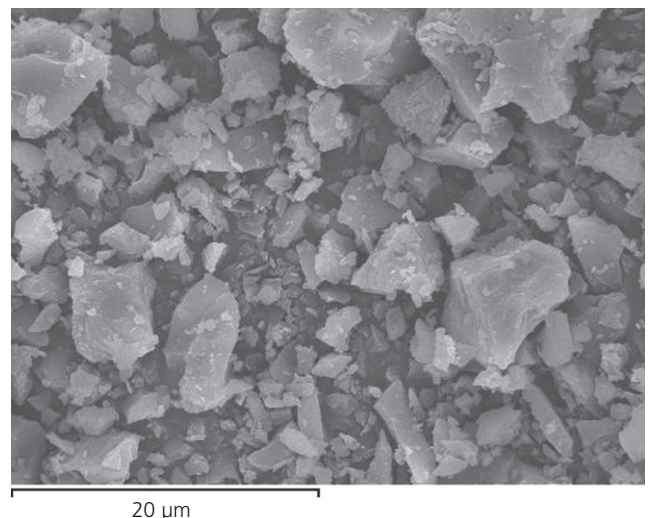


Figure 1. SEM micrograph of ground TCW

PROOFS

Sodium oxide (Na ₂ O): wt%	1.49
Magnesium oxide (MgO): wt%	1.79
Aluminium oxide (Al ₂ O ₃): wt%	18.60
Silicon dioxide (SiO ₂): wt%	61.22
Phosphorus pentoxide (P ₂ O ₅): wt%	0.25
Sulfur trioxide (SO ₃): wt%	0.09
Potassium oxide (K ₂ O): wt%	3.33
Calcium oxide (CaO): wt%	5.77
Titanium dioxide (TiO ₂): wt%	0.82
Iron oxide (Fe ₂ O ₃): wt%	5.02
Zinc oxide (ZnO): wt%	0.22
Zirconium dioxide (ZrO ₂): wt%	0.38
Barium oxide (BaO): wt%	0.14
Other	0.19
Loss on ignition at 1000°C	0.70

Table 1. Chemical composition of tile ceramic waste

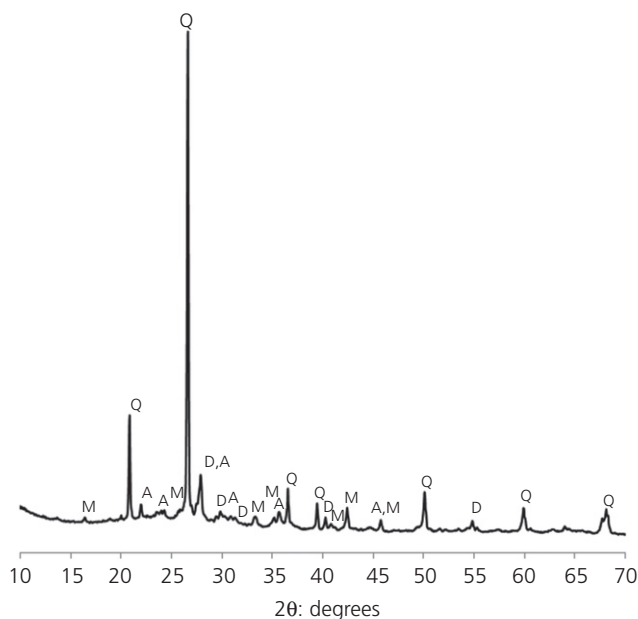


Figure 2. X-ray diffractogram of ground TCW: Q, quartz (SiO₂); M, mullite (Al₆Si₂O₁₃); A, albite (NaAlSi₃O₈); D, diopside (CaMg(SiO₃)₂)

diopside (D, CaMg(SiO₃)₂; PDF #190239), also present as minor constituents.

pH and conductivity test method

The pozzolanic reactivity of ground TCW was assessed by pH and conductivity tests. As previously described by Tashima *et al.* (2014), this method consists of monitoring the electrical conductivity and pH of aqueous lime:pozzolan suspensions mixed in different proportions. Data were taken at 60°C

for up to 7 d curing in a microPH2001 pH-meter and a microCM2201 conductimeter (Crison).

The total mass of solid material was kept constant in all the tests (1 g) and the following lime:pozzolan proportions, expressed in mass, were used: 0.5:9.5, 1.0:9.0, 1.5:8.5, 2.0:8.0, 2.5:7.5 and 3.0:7.0. Suspensions, prepared by adding 50 ml of deionised water to the solid material, were introduced into a 100 ml Erlenmeyer flask. The containers were then tightly capped and placed in a water bath at 60°C. The different mixes were continuously agitated to facilitate the reaction processes, and electrical conductivity and pH data were collected every 24 h up to 7 d. A calcium hydroxide saturated solution was also prepared as the reference (control). The electrical conductivity measurements of the ground TCW ($C_{t,poz}$) suspended in water were also quantified to correct the results with the contribution of ions provided by ceramic waste.

Electrical conductivity curves were produced in terms of loss of conductivity (L_C), which was calculated as a percentage according to

$$1. \quad L_C = \frac{C_0 - (C_t - C_{t,poz})}{C_0} \times 100$$

where C_0 is the initial conductivity of the calcium hydroxide suspension before adding pozzolan, C_t is the conductivity of the 'lime:pozzolan' mixture at a given time and $C_{t,poz}$ is the electrical conductivity of the ground TCW (pozzolan) measured in water.

After 7 d reaction, the suspensions were filtered to separate the solid and liquid fractions. Thermogravimetric analyses (TGA) were used to verify the presence of portlandite and other hydrated products formed by the pozzolanic reaction of ceramic waste. The concentration of calcium ions (Ca⁺²) in the liquid was determined by chemical analysis titrating with 0.05M ethylenediaminetetraacetic acid (EDTA). Q7

Paste and mortar sample preparation

Paste and mortar samples were prepared using Portland cement (PC) type CEM I 42.5R as the cementitious material and replacing it with different proportions of TCW (15%, 25%, 35% and 50% by weight). Paste samples were used to investigate microstructure evolution. For that purpose, the binder (PC + TCW) was mixed with water (w/b = 0.5) in plastic containers for 4 min, which were then sealed and stored in a thermostatically controlled chamber at 20°C at a relative humidity (RH) of 90–95%. Mortars were prepared following the process described in UNE EN 196-1:2005, using 1.0:3.0:0.5 (binder:sand:water) weight proportions. Siliceous sand with a modulus of fineness of 4.36 and maximum particle size of 2 mm was used as the aggregate. Specimens were demoulded after being cured for 24 h (20°C, 90–95% RH) and were then

PROOFS

immersed in water with calcium hydroxide until the testing age.

Mortar testing

The workability of fresh mortars was determined by the flowable test according to UNE 83811-1992 specifications. The compressive strength of mortar specimens was determined following UNE EN 196-1. The compressive strength results are presented here in terms of strength activity index (SAI, in %) and strength gain (SG, in %). The SAI represents the ratio of the strength of the mortar with additions to that of the control mortar. SG is defined by Equation 2 and considers the proportion of cement used in the mixtures

$$2. \quad SG = \frac{|C_{S_{poz}} - (C_{S_{control}} \times cem\%)|}{C_{S_{control}} \times cem\%} \times 100$$

where $C_{S_{poz}}$ is the compressive strength of mortar containing TCW, $C_{S_{control}}$ is the compressive strength of the control mortar, and $cem\%$ is the proportion of cement in the mortar with pozzolanic additions (in each unit).

The microstructure of the paste samples was examined by SEM-EDX (JEOL JSM-6300). XRD was used to identify mineralogical phases with the equipment described earlier in the section on materials. The Fourier transform infrared spectroscopy (FTIR) studies were done using a Bruker Tensor 27 Platinum ATR FTIR within the range 400–4000 cm^{-1} . TGA were performed in a Mettler-Toledo TGA850, with a horizontal furnace. Aluminium sealable crucibles (100 μ l), with a

pinhole in the lid to obtain the self-generated atmosphere, were used. The gas flow for the surrounding atmosphere was 75 ml/min of nitrogen and the test was performed at a heating rate of 10°C/min within the temperature range 35–600°C.

Results and discussion

pH and conductivity test results

The curves of conductivity and pH values for lime:pozzolan concentrations of 0.5:9.5 and 3.0:7.0 are plotted in Figure 3. As can be seen, the conductivity and pH values rapidly reduced in the mixtures that contained small amounts of lime (Figure 3(a)), which indicates that the calcium and hydroxide ions (Ca^{2+} and OH^-) of the dissolved lime were consumed by ceramic waste to generate cementitious products that precipitate. The 3.0:7.0 suspension, with a larger amount of lime, became saturated in calcium hydroxide from the very beginning. Despite TCW reacting with the lime dissolved through the pozzolanic reaction and the amount of ions in solution reducing, dissolution of new solid lime occurred. This was the reason for the slight variation noted in the conductivity and pH values in Figure 3(b) since, although the hydroxide ions in the solution were consumed by TCW, new solid lime was always dissolved.

Figure 4 shows the evolution of loss of conductivity with time for the different lime:pozzolan concentrations in the solutions tested at 60°C. The suspensions that contained the smallest amounts of calcium hydroxide (0.5:9.5, 1.0:9.0, 1.5:8.5 and 2.0:8.0) showed significant loss of electrical conductivity (higher than 20%), which was attributed to the consumption

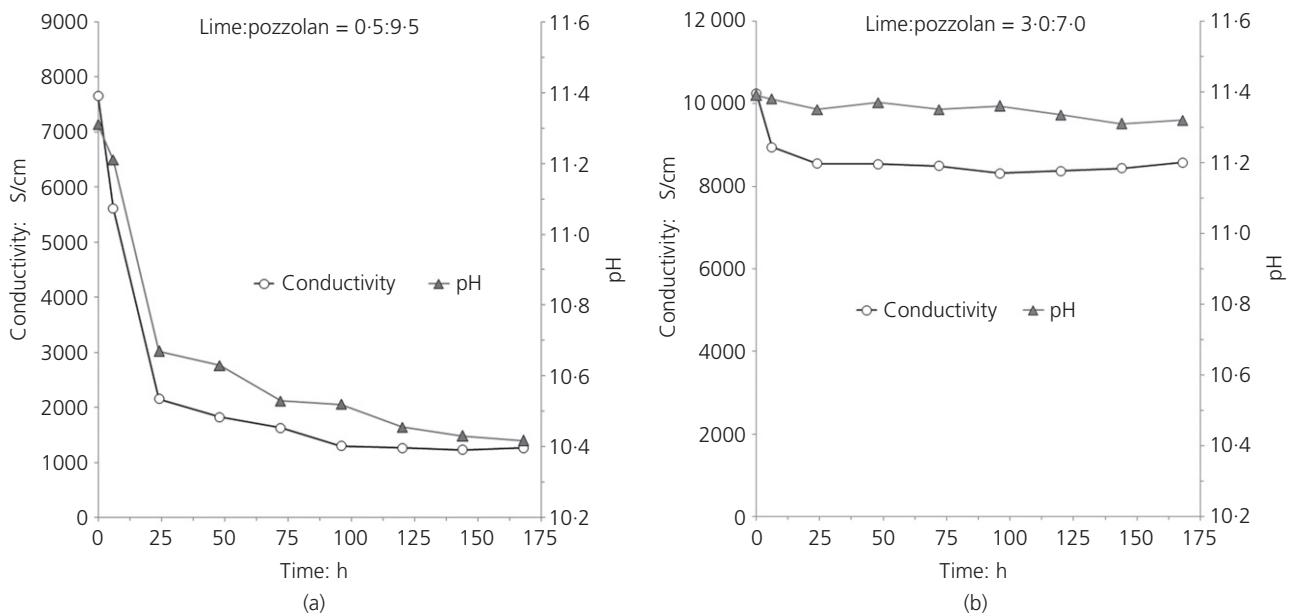


Figure 3. Electrical conductivity measurements and pH values for lime:pozzolan suspensions of 0.5:9.5 (a) and 3.0:7.0 (b)

PROOFS

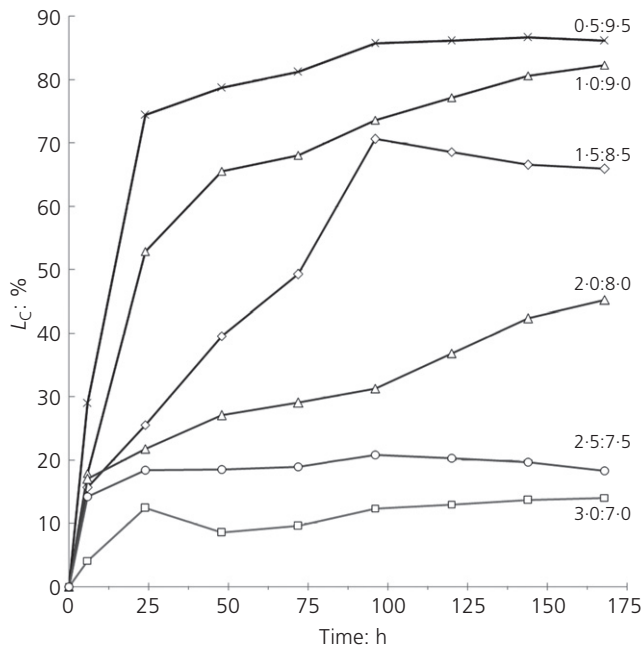


Figure 4. Loss of electrical conductivity, tested at 60°C, for different lime:pozzolan concentrations

of calcium and hydroxide ions (Ca^{2+} and OH^-) of lime by the TCW. On the contrary, no significant variation in electrical conductivity values was observed in the samples that contained greater calcium hydroxide ($\text{Ca}(\text{OH})_2$) additions. This indicates that the ions were not completely consumed due to the low reactivity presented by the TCW at early curing ages. According to the method proposed by Tashima *et al.* (2014) to assess the pozzolanic reaction rate, suspensions 2.5:6.5 and 3.0:7.0 were saturated in calcium hydroxide since the loss of the conductivity values recorded after 7 d of testing was lower than 30% and the pH values reduced by less than 0.15 units. The results obtained when marking the lime:pozzolan proportion that yielded unsaturation at the testing temperature in the classification diagram provided by Tashima *et al.* (2014) showed that the reactivity of TCW was low compared to that presented by rice husk ash and silica fume, these being the pozzolanic materials used to develop the pozzolanic reactivity assessment method.

Mortar workability

The workability of the mortars containing TCW was similar to that presented by the control mortar (with no TCW) and all the values were close to 155 ± 5 mm regardless of the amount of TCW added. These results are close to those previously reported by Pereira de Oliveira *et al.* (2012), who did not observe a significant reduction in the workability of mortars when incorporating TCW and red clay brick waste (4.5% and 7.3% respectively in samples that contained 40% ceramic powder). Although a greater specific surface and porous

additions usually require larger amounts of water, this was not the case for TCW, which was attributed to the smooth surface and low porosity of the ceramic particles.

Compressive strength of mortars

Table 2 summarises the compressive strength results for the mortars with increasing TCW additions, cured for 3–90 d. Although a significant reduction in strength with increasing TCW contents was observed at short curing ages (3 d and 7 d), the values came closer to that of the control mortar after curing for 90 d. This behaviour was consistent with the pH and conductivity test results, and corroborated the low level of reactivity of TCW, which was enhanced at long curing ages.

The SAI results are shown in Figure 5. The obtained results meet the specifications set out in UNE EN 196-1, and were

TCW: wt%	Compressive strength: MPa			
	3 d	7 d	28 d	90 d
0	44.00 ± 0.58	47.19 ± 1.10	51.02 ± 1.84	55.48 ± 2.01
15	32.11 ± 1.49	43.36 ± 1.13	45.30 ± 1.79	53.13 ± 2.10
25	32.21 ± 0.86	38.46 ± 1.02	45.07 ± 1.58	50.48 ± 2.37
35	29.02 ± 0.85	34.30 ± 0.71	40.15 ± 1.41	49.83 ± 1.89
50	19.09 ± 0.49	24.63 ± 0.80	33.82 ± 0.84	40.20 ± 0.92

Table 2. Evolution of compressive strength of mortars with TCW additions, cured at 20°C for 3–90 d

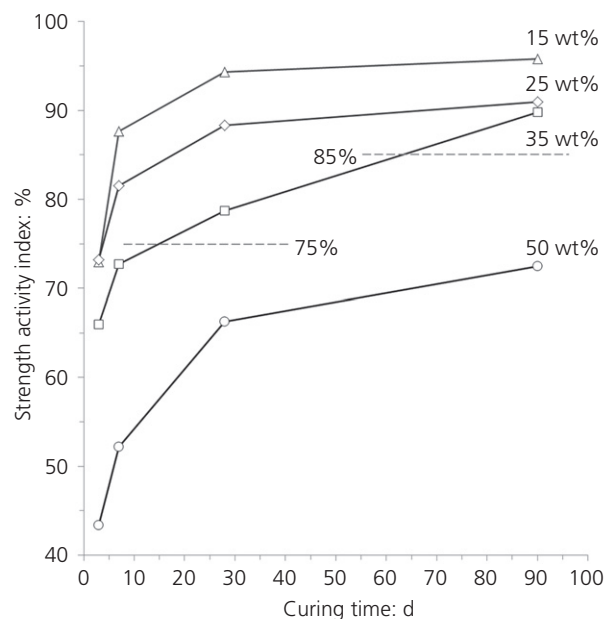


Figure 5. Strength activity index of mortars with TCW additions cured at 20°C for 3–90 d

PROOFS

higher than 75% and 85% in the mortars that contained 25% TCW cured for 28 d and 90 d respectively. The SAI values improved with curing time and came closer to the unit after 90 d curing. This was attributed to the enhanced reaction between pozzolan and portlandite generated during Portland cement hydration. Although the low reactivity of TCW

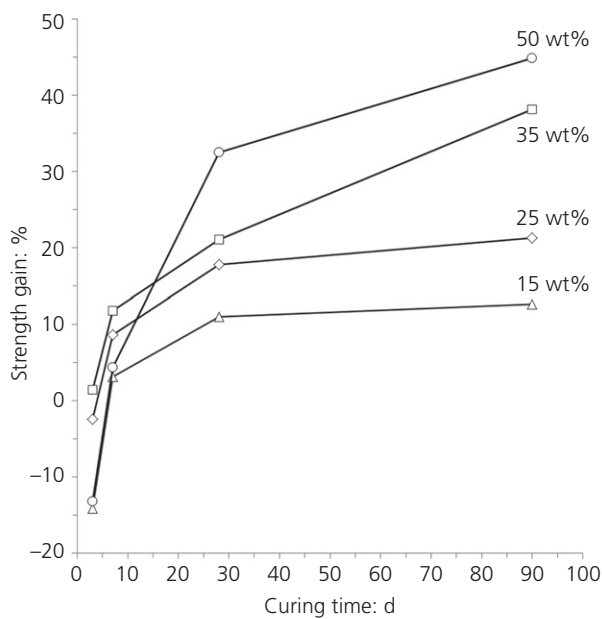


Figure 6. Strength gain index of mortars with TCW additions cured at 20°C for 3–90 d

observed at early curing ages makes these materials inadvisable in applications where speed of construction is required, the mechanical requirements set out in fly ash regulations can be satisfied after 28 d curing by replacing up to 35 wt% of Portland cement with TCW. This, together with the geographic proximity between Spanish ceramic tile and Portland cement manufacturing companies, makes TCW a potential alternative as a pozzolanic admixture. This would result in environmental and economic advantages, allowing waste that would otherwise be landfilled to be reused.

Similar results were reported by Pereira de Oliveira *et al.* (2012), who did not observe significant compressive strength differences among mortars that contained brick, tiles, amber and green glass waste as pozzolanic admixtures. Only the mortar with brick powder did not follow the minimum SAI established at 90 d in UNE EN 196-1 (85%), which was attributed to its production process as it did not result in a structure with potential pozzolanic reactivity.

Figure 6 shows the strength gains of mortars containing different percentages of TCW (15–50 wt%) cured at 20°C for up to 90 d. Although the compressive strength results reduced with increasing TCW additions (Table 2), an excellent contribution of pozzolanic addition to the mechanical properties was observed after 28 d curing, which became more significant with increasing TCW additions. These results agree with those reported by Heidari *et al.* (2013) for concrete produced using ground ceramic tile waste as a substitute for Portland cement (0–40 wt%). As described by Heidari *et al.* (2013),

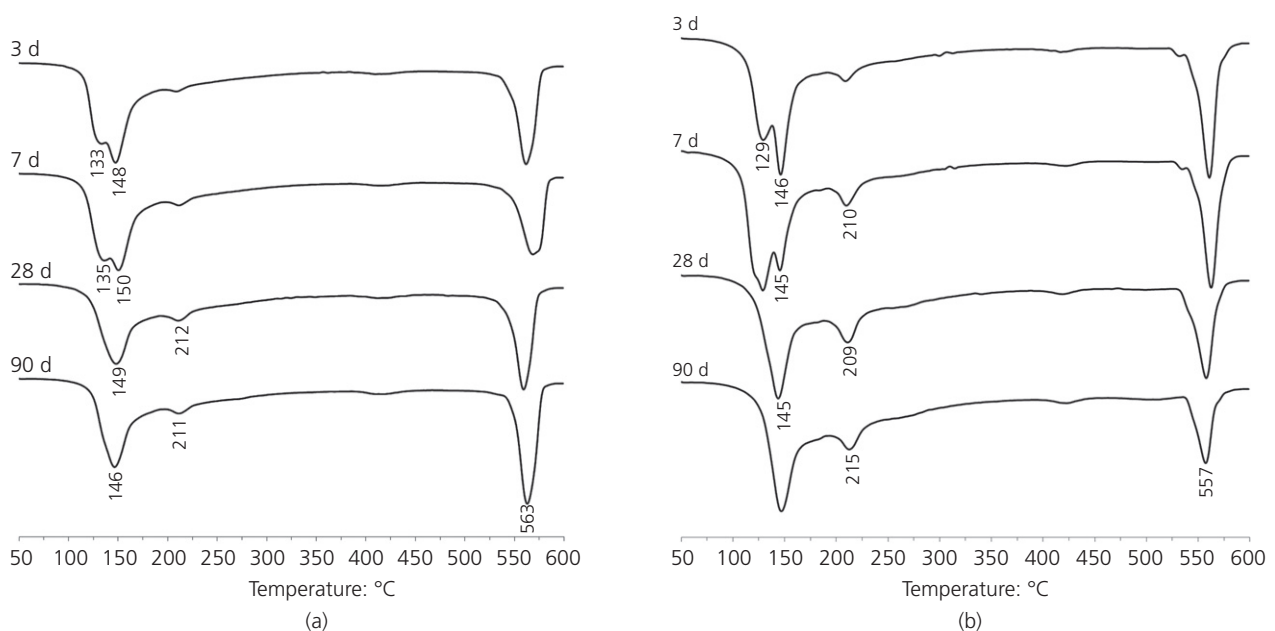


Figure 7. DTG curves of pastes cured for 3–90 d at 20°C: (a) control; (b) 50 wt% TCW

PROOFS

TCW: wt%	Component: wt%															
	3 d curing				7 d curing				28 d curing				90 d curing			
	TWL	CH	H	FL	TWL	CH	H	FL	TWL	CH	H	FL	TWL	CH	H	FL
0	17.8	3.2	14.6		18.8	3.2	15.6		18.2	3.2	14.9		19.1	3.7	15.4	
15	16.1	2.8	13.3	-2.0	17.3	2.8	14.6	-3.1	16.5	2.6	13.9	5.4	17.4	2.9	14.6	7.9
25	15.0	2.5	12.5	-4.9	16.5	2.8	13.7	-19.8	15.9	2.5	13.4	-4.4	16.3	2.4	13.9	15.1
35	14.4	2.5	11.9	-19.6	14.4	2.4	12.1	-15.9	14.3	2.1	12.1	-1.8	15.3	1.5	13.8	37.0
50	11.7	2.0	9.7	-22.6	13.3	1.9	11.3	-24.1	12.5	1.5	11.0	-6.2	13.0	0.9	12.1	48.5

Table 3. Results obtained after TGA: TWL, total weight loss; CH, water loss attributed to decomposition of portlandite; H, percentage of hydrates originated during hydration; FL, fixed lime

the addition of up to 20 wt% ceramic powder did not considerably affect compressive strength behaviour, with average decreases of 14.60% and 1.45% recorded after 7 d and 90 d curing respectively.

Microstructural studies

Thermogravimetric analysis

Figure 7 shows the TGA derivate curves (DTG) of the control paste (Figure 7(a)) and the 50 wt% TCW paste (Figure 7(b)) cured for 3, 7, 28 and 90 d. According to Payá *et al.* (2003), the first and second peaks appearing in the diagram overlap within the 100–180°C region, and are attributed to the dehydration of calcium silicate hydrates (CSH) and ettringite (AFt). The peak centred at 180–240°C corresponds to the dehydration of calcium aluminate hydrates and calcium aluminosilicate hydrates (CAH and CASH), while the peak appearing at 520–580°C is due to dehydroxylation of portlandite. As expected, the intensity of the last band was stronger in the control paste and diminished with TCW content, which was attributed to the dilution of Portland cement and pozzolanic effects. While this band increased with curing time in the control paste, it progressively decreased with curing age in the samples that contained TCW because of the pozzolanic reaction that occurred between the ceramic waste and portlandite.

Table 3 summarises the main quantitative data obtained after TGA; that is, total weight loss (TWL), water loss attributed to the decomposition of portlandite (CH), the percentage of hydrates originated during the hydration process (H, calculated as the difference between TWL and dehydroxylation of portlandite) and fixed lime (FL). The percentage of fixed lime was determined according to

$$3. \quad FL = \frac{CH_c \times cem\% - CH_{poz}}{CH_c \times cem\%} \times 100$$

in which CH_c is the lime (portlandite) present in the control paste for a given curing time, CH_{poz} is the lime in the paste with TCW addition at the same curing age and $cem\%$ is the proportion of cement in the paste with pozzolanic additions.

As shown in Figure 8, negative fixed lime values were obtained at early curing ages which, as explained by Cyr *et al.* (2005) and Payá *et al.* (2003), were attributed to the particle effect that prevailed over the pozzolanic reaction. According to Cyr *et al.* (2005), this effect accelerated Portland cement hydration due to heterogeneous nucleation, since

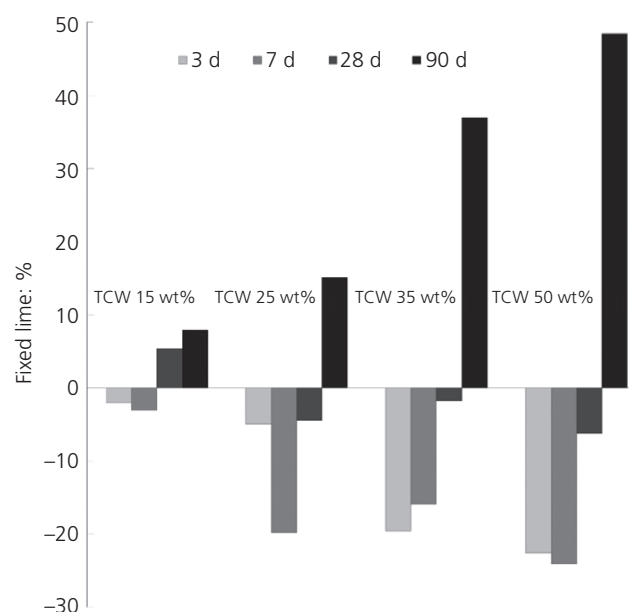


Figure 8. Fixed lime content in pastes with TCW cured at 20°C for 3–90 d

PROOFS

TCW particles provided an extra surface upon which the first hydration products to form could be deposited, thus leaving more free area to continue cement hydration. Then, the cement hydrated faster with increasing ceramic waste contents, producing more negative values. These rates progressively increased to become positive after 90 d curing, given the consumption of portlandite by ceramic waste in the pozzolanic reaction.

X-ray diffraction studies

Figure 9 shows the XRD patterns for the control paste and the paste with 50 wt% TCW, both cured for 28 d. Portlandite (P, $\text{Ca}(\text{OH})_2$, PDF #040733) was the main phase detected in the control paste, together with other minor compounds such as ettringite (E, $\text{Ca}_6\text{Al}_2(\text{SO}_4)_3(\text{OH})_{12}\cdot 26\text{H}_2\text{O}$, PDF #411451) and calcite (C, CaCO_3 , PDF #050586). The latter was due to the presence of a limestone filler in the Portland cement composition, which is corroborated by the corresponding peak registered in the paste that contained 50 wt% TCW, whose intensity diminished due to the dilution effect. Traces of other phases, such as dicalcium silicate larnite (L, $\beta\text{-Ca}_2\text{SiO}_4$, PDF #330302) and calcium silicate wollastonite (W, CaSiO_3 , PDF #100489), were also detected.

In agreement with the TGA results, the intensities of peaks on the XRD spectrum attributed to portlandite, calcite and ettringite were less for the 50 wt% TCW paste than for the control paste. The main crystalline phases corresponding to the ceramic residue, such as quartz (Q, SiO_2 , PDF #331161) and albite (A, $\text{NaAlSi}_3\text{O}_8$, PDF #090466), were also identified in the pastes that contained TCW, along with traces of carboaluminate hydroxalite (T, $\text{Mg}_6\text{Al}_2\text{CO}_3(\text{OH})_{16}\cdot 4(\text{H}_2\text{O})$, PDF #141191).

Fourier transform infrared spectroscopy

The FTIR spectra of the control paste and the 50 wt% TCW paste cured at 20°C for 3–90 d are plotted in Figures 10(a) and 10(b) respectively. The FTIR spectrum of the TCW is included in the figures for reference purposes: the ceramic material presented a main band within the 1200–950 cm^{-1} region, centred at 1009 cm^{-1} , together with a signal at 460 cm^{-1} and lower intensity bands at 796–778 cm^{-1} (double peak). These bands were attributed to the asymmetric stretching vibrations of Si–O and Al–O bonds (Frias *et al.*, 2011) and were distinguished in all the pastes that contained TCW, which denoted the presence of unreacted TCW.

As reported by Yu *et al.* (1999), the bands that appeared within the 950–1100 cm^{-1} region in all the hydrated pastes are typically originated by the Si–O stretching vibrations of newly formed calcium silicate hydrates. The bands that arose at 1630 cm^{-1} and 3450 cm^{-1} were attributed to the bending (H–O–H) and stretching vibrations (–OH) of the hydroxyl groups in hydrated products. These bands appeared together

with the sharp peak that originated at 3640 cm^{-1} , which also corresponded to –OH stretching vibrations (Parande *et al.*, Q13 2011). The evolution of this band was linked to that attributed to calcium hydroxide in the thermogravimetric diagrams (the 520–580°C region in Figure 7), which persisted after 90 d of curing and registered decreasing intensities with increasing TCW contents.

As explained by Lee and Li (2010), the bands that appeared at 1400–1500 cm^{-1} , together with that centred at 874–714 cm^{-1} , were associated with carbonate (CO_3^{2-}) asymmetric vibrations. In agreement with the XRD results, these bands did not appear in the raw material (TCW), but were clearly distinguished in all the hydrated pastes, being attributed to the calcium carbonate filler in the Portland cement used.

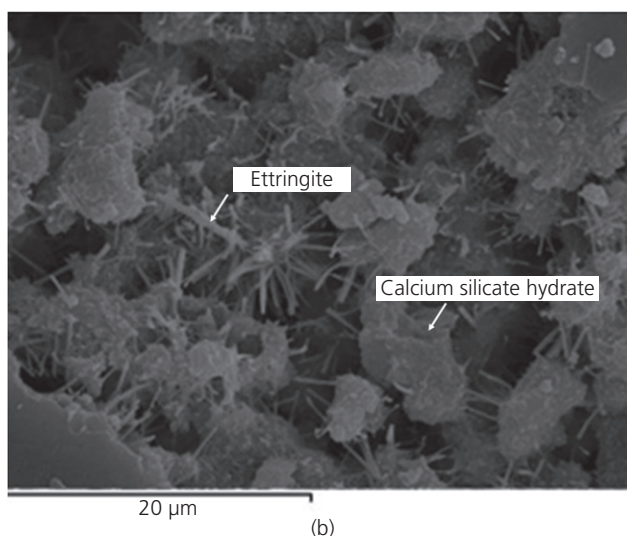
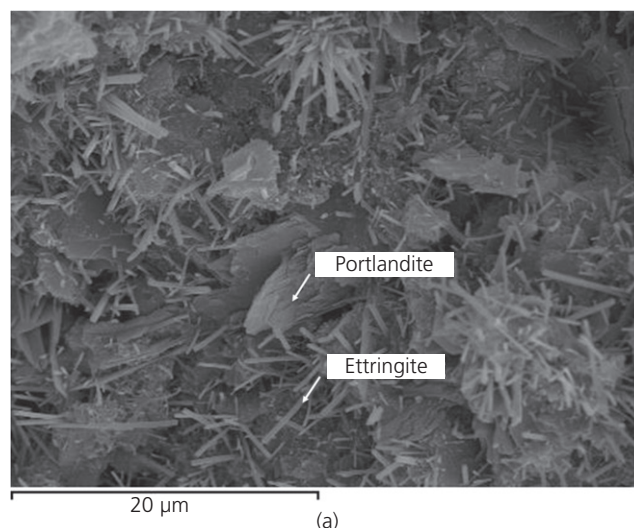


Figure 11. SEM images of pastes cured at 20°C for 28 d: (a) 25 wt% TCW; (b) 50 wt% TCW

PROOFS

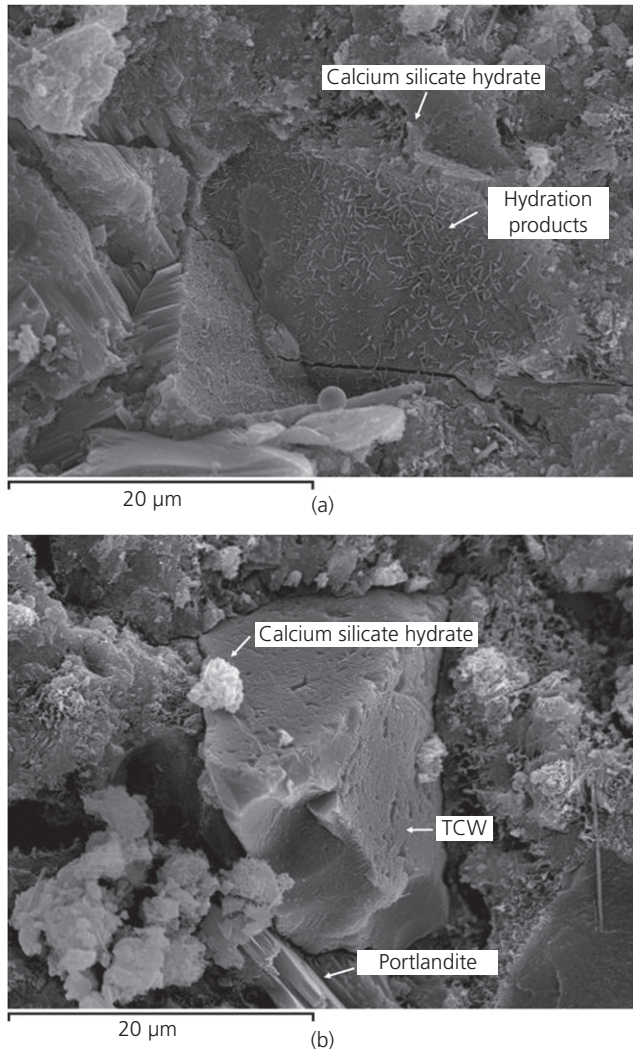


Figure 12. SEM images of pastes cured at 20°C for 90 d: (a) 25 wt% TCW; (b) 50 wt% TCW

Scanning electron microscopy

The microstructures of the pastes containing 25 wt% and 50 wt% TCW as Portland cement substitute and cured for 28 d and 90 d are presented in Figures 11 and 12. The presence of ettringite needles, hexagonal plates of portlandite and calcium silicate hydrate amorphous products, previously identified by the XRD, FTIR and TGA, was corroborated by SEM. Similarly, unreacted TCW particles slightly covered by hydration products were observed (Figure 12).

Conclusions

This research has demonstrated the potential use of tile ceramic waste (TCW) to produce pozzolanic cement. The experimental study provided the following conclusions.

- The TCW composition is appropriate for reacting with the portlandite formed during Portland cement hydration to

form cementing compounds through the pozzolanic reaction.

- The negative fixed lime values obtained at short curing ages denote an accelerated hydration process of Portland cement due to the particle effect conferred by the pozzolan. The positive values recorded after 90 d curing indicate that the reactivity of TCW with the Portland cement hydration products occurs mainly at long curing ages.
- The workability of the mortars containing TCW was similar to that presented by the control mortar without TCW.
- Additions within the range 15–35 wt% satisfy the strength activity index established by fly ash regulations, and are higher than 75% and 85% after 28 d and 90 d curing respectively.

Acknowledgements

The authors are grateful to the Spanish Ministry of Science and Innovation for supporting this study through project GEOCEDEM BIA 2011-26947, and also to FEDER funding.

REFERENCES

- Alves AV, Vieira TF, Brito J and Correia JR (2014) Mechanical properties of structural concrete with fine recycled ceramic aggregates. *Construction and Building Materials* **64**(??): 103–113. Q14
- Ay N and Ünal M (2000) The use of waste ceramic tile in cement production. *Cement and Concrete Research* **30**(??): 497–499. Q15
- Bezerra Cabral AE, Schalch V, Coitinho Dal Molin DC and Duarte Ribeiro JL (2010) Mechanical properties modeling of recycled aggregate concrete. *Construction and Building Materials* **24**(??): 421–430. Q16
- Cyr M, Lawrence P and Ringot E (2005) Mineral admixtures in mortars. Quantification of the physical effects of inert materials on short-term hydration. *Cement and Concrete Research* **35**(??): 719–730. Q17
- Frias M, Villar E and Savastano H (2011) Brazilian sugar cane bagasse ashes from the cogeneration industry as active pozzolans for cement manufacture. *Cement and Concrete Composites* **33**(??): 490–496. Q18
- Frias M, Savastano H, Villar E, Sánchez de Rojas MI and Santos S (2012) Characterization and properties of blended cement matrices containing activated bamboo leaf wastes. *Cement and Concrete Composites* **34**(??): 1019–1023. Q19
- García Ten FJ (2005) *Descomposición Durante la Cocción del Carbonato Cálcico Contenido en el Soplete Crudo de los Azulejos*. PhD thesis, Universitat Jaume I, Castelló, Spain (in Spanish).
- GdE (Gobierno de España) (2010) *Ministerio de Fomento de España, Catálogo de Residuos Utilizables en Construcción*. See <http://www.cedexmateriales.vsf.es/view/>

PROOFS

- archivos/residuos/447.pdf (accessed 01/03/2014)
(in Spanish).
- Q21 Heidari A and Takavoli D (2013) A study of the mechanical properties of ground ceramic powder concrete incorporating nano-SiO₂ particles. *Construction and Building Materials* **38**(??): 255–264.
- Q20 INE (Instituto Nacional de Estadística) (2015) *Estadísticas Sobre Medio Ambiente. Encuesta Sobre Generación de Residuos en el Sector Servicios y Construcción*. See <http://www.ine.es/prensa/np801.pdf> (accessed 01/02/2015)
(in Spanish).
- Q22 Lavat AE, Trezza MA and Poggi M (2009) Characterization of ceramic roof tile wastes as pozzolanic admixture. *Waste Management* **29**(??): 1666–1674.
- Q23 Lee TC and Li ZS (2010) Conditioned MSWI ash-slag-mix as a replacement for cement in cement mortar. *Construction and Building Materials* **24**(??): 970–979.
- Q24 Medina C, Frías M and Sánchez de Rojas MI (2012a) Microstructure and properties of recycled concretes using ceramic sanitary ware industry waste as coarse aggregate. *Construction and Building Materials* **31**(??): 112–118.
- Q25 Medina C, Frías M, Sánchez de Rojas MI, Thomas C and Polanco JA (2012b) Gas permeability in concrete containing recycled ceramic sanitary ware aggregate. *Construction and Building Materials* **37**(??): 597–605.
- Q26 Medina C, Banfill PFG, Sánchez de Rojas MI and Frías M (2013a) Rheological and calorimetric behaviour of cements blended with containing ceramic sanitary ware and construction/demolition waste. *Construction and Building Materials* **40**(??): 822–831.
- Q27 Medina C, Sánchez de Rojas MI and Frías M (2013b) Properties of recycled ceramic aggregate concretes: water resistance. *Cement and Concrete Composites* **40**(??): 21–29.
- Q28 Meyer C (2009) The greening of the concrete industry. *Cement and Concrete Composites* **31**(??): 601–605.
- Q29 Monfort E, Mezquita A, Mallol G, Granel R and Vaquer E (2011) *Guía de Ahorro Energético en el Sector de Baldosas Cerámicas*. Instituto de Tecnología Cerámica, Agencia Valenciana de la Energía, ~~XXXXXXXXXXXX~~, ~~XXXXXXXXXXXX~~, Depósito Legal V-2078–2011 (in Spanish).
- Q30 Naceri A and Hamina MC (2009) Use of waste brick as a partial replacement of cement in mortar. *Waste Management* **29**(??): 2378–2384.
- Q31 Parande AK, Ramesh Babu B, Pandi K, Karthikeyan MS and Palaniswamy N (2011) Environmental effects on concrete using ordinary and pozzolana Portland cement. *Construction and Building Materials* **25**(??): 288–297.
- Q32 Payá J, Monzó J and Borrachero MV (1999) Fluid catalytic cracking catalyst residue (FC3R): an excellent mineral by-product for improving early-strength development of cement mixtures. *Cement and Concrete Research* **29**(??): 1773–1779. **Q33**
- Payá J, Borrachero MV, Monzó J, Peris-Mora E and Bonilla M (2002) Long term mechanical strength behaviour in fly ash/Portland cement mortar prepared using processed ashes. *Journal of Chemical Technology and Biotechnology* **77**(??): 336–344. **Q34**
- Payá J, Monzó J, Borrachero MV and Velázquez S (2003) Evaluation of the pozzolanic activity of fluid catalytic cracking catalyst residue (FC3R). Thermogravimetric analysis studies on FC3R-Portland cement pastes. *Cement and Concrete Research* **33**(??): 603–609. **Q35**
- Pereira de Oliveira LA, Castro Gomes JP and Santos PMS (2012) The potential pozzolanic activity of glass and red-clay ceramic waste as cement mortars components. *Construction and Building Materials* **31**(??): 197–203. **Q36**
- Puertas F, García D, Iaz I, Palacios M *et al.* (2010) Clinkers and cements obtained from raw mix containing ceramic waste as a raw material. Characterization, hydration and leaching studies. *Cement and Concrete Composites* **32**(??): 175–186. **Q37**
- Reig L, Tashima M, Soriano L *et al.* (2013a) Alkaline activation of ceramic waste materials. *Waste and Biomass Valorization* **4**(??): 729–736. **Q38**
- Reig L, Tashima MM, Borrachero MV *et al.* (2013b) Properties and microstructure of alkali-activated red clay brick waste. *Construction and Building Materials* **43**(??): 98–106. **Q39**
- Reig L, Soriano L, Borrachero MV, Monzó J and Payá J (2014) Influence of the activator concentration and calcium hydroxide addition on the properties of alkali-activated porcelain stoneware. *Construction and Building Materials* **63**(??): 214–222. **Q40**
- Senthamarai RM, Manoharan PD and Gobinath D (2011) Concrete made from ceramic industry waste: durability properties. *Construction and Building Materials* **25**(??): 2413–2419. **Q41**
- Shi C, Fernández Jiménez A and Palomo A (2011) New cements for the 21st century: the pursuit of an alternative to Portland cement. *Cement and Concrete Research* **41**(??): 750–763. **Q42**
- Silva J, de Brito J and Veiga R (2008) Fine ceramics replacing cement in mortars. Partial replacement of cement with fine ceramics in rendering mortars. *Materials and Structures* **41**(??): 1333–1344. **Q43**
- Stock D (2014) World production and consumption of ceramic tiles. *Tile Today* **85**: 54–62. See www.infotile.com/publications (accessed 01/01/2015).
- Sun Z, Cui H, An H *et al.* (2013) Synthesis and thermal behavior of geopolymer-type material from waste ceramic. *Construction and Building Materials* **49**(??): 281–287. **Q44**
- Tashima MM, Soriano L, Monzó J *et al.* (2014) New method to assess the pozzolanic reactivity of mineral

PROOFS

- Q45 admixtures by means of pH and electrical conductivity measurements in lime:pozzolan suspensions. *Materiales de Construcción* **64**([29](#)): e032, <http://dx.doi.org/10.3989/mc.2014.00914>.
- Yu P, Kirkpatrick RJ, Poe B, McMillan PF and Cong X (1999) Structure of calcium silicate hydrate (C-S-H): near-, mid-, and far-infrared spectroscopy. *Journal of the American Ceramic Society* **82**([29](#)): 742–748. **Q46**
- Zanelli C, Raimondo M, Guarini G and Dondi M (2011) The vitreous phase of porcelain stoneware: composition, evolution during sintering and physical properties. *Journal of Non-Crystalline Solids* **357**([29](#)): 3251–3260. **Q47**

WHAT DO YOU THINK?

To discuss this paper, please submit up to 500 words to the editor at journals@ice.org.uk. Your contribution will be forwarded to the author(s) for a reply and, if considered appropriate by the editorial panel, will be published as a discussion in a future issue of the journal.

QUERY FORM

Institution of Civil Engineers (ICE)

Journal Title: **ADVANCES IN CEMENT RESEARCH (ADCR)**

Article No: **1500021**

AUTHOR: The following queries have arisen during the editing of your manuscript. Please answer the queries by making the requisite corrections at the appropriate positions in the text.

Query No.	Nature of Query	Author's Response
Q1	Please give job title/position of ALL authors	Modified in Q1
Q2	Medina <i>et al.</i> 2012a or 2012b, or both?	Both
Q3	Medina <i>et al.</i> 2013a or 2013b, or both?	Both
Q4	Reig <i>et al.</i> 2013a or 2013b or both?	Both
Q5	Spanish National Institute of Statistics (2013): should this reference be INE 2015 ?	INE, 2013
Q6	Please add details of UNE EN 196-2 to reference list and give correct citation here	Added in list and citation
Q7	EDTA defined as Ethylenediaminetetraacetic acid: is this OK?	Yes
Q8	Please add details of UNE EN 196-1 to reference list and give correct citation here	Added in list and citation
Q9	Please add details of UNE 83811 to reference list and give correct citation here	Added in list and citation
Q10	not sure what is meant by "closer to the unit ": please clarify	'the unit' replaced by 100%
Q11	Heidari <i>et al.</i> 2013 is not in reference list. Please give full details of this work or advise changes to citation (Heidari and Takavoli ?)	Change to Heidari and Takavoli
Q12	Should this be Heidari and Takavoli?	Yes
Q13	OH changed to –OH, as above: is this OK?	Yes
Q14	Please supply issue number	08
Q15	Please supply issue number	03
Q16	Please supply issue number	04
Q17	Please supply issue number	04
Q18	Please supply issue number	04
Q19	Please supply issue number	09
Q20	Please supply issue number --> Year changed to	2013, when study was done
Q21	Heidari and Takavoli is not cited. Please add citation to main text or confirm item can be removed from list	Citation has been modified in the text
Q22	INE 2015 is not cited. Please add citation to main text or confirm item can be removed from list	INE 2013 has been cited in the text
Q23	Please supply issue number	05
Q24	Please supply issue number	06
Q25	Please supply issue number	06
Q26	Please supply issue number	12

Q27	Please supply issue number	03
Q28	Please supply issue number	07
Q29	Please supply issue number	08
Q30	Please give name and location (town/city and country) of organisation issuing report	Valencia, Spain
Q31	Please supply issue number	08
Q32	Please supply issue number	01
Q33	Please supply issue number	11
Q34	Please supply issue number	03
Q35	Please supply issue number	04
Q36	Please supply issue number	06
Q37	Please supply issue number	03
Q38	Please supply issue number	04
Q39	Please supply issue number	06
Q40	Please supply issue number	07
Q41	Please supply issue number	05
Q42	Please supply issue number	07
Q43	Please supply issue number	08
Q44	Please supply issue number	12
Q45	Please supply issue and page numbers	316, pages 1-12
Q46	Please supply issue number	03
Q47	Please supply issue number	16-17