



## OPEN ACCESS

APPROVED BY  
Frontiers Editorial Office,  
Frontiers Media SA, Switzerland

## \*CORRESPONDENCE

Lu Xie

[✉ xielu@sibpt.com](mailto:xielu@sibpt.com)

Lei Liu

[✉ liulei@fudan.edu.cn](mailto:liulei@fudan.edu.cn)

Yin Wang

[✉ chinawangyin@foxmail.com](mailto:chinawangyin@foxmail.com)

RECEIVED 29 December 2023

ACCEPTED 23 February 2024

PUBLISHED 03 April 2024

## CITATION

Chen Y, Yao L, Zhao S, Xu M, Ren S, Xie L,

Liu L and Wang Y (2024) Corrigendum:

The oxidative aging model integrated various risk factors in type 2 diabetes mellitus at system level.

*Front. Endocrinol.* 15:1363078.

doi: 10.3389/fendo.2024.1363078

## COPYRIGHT

© 2024 Chen, Yao, Zhao, Xu, Ren, Xie, Liu and Wang. This is an open-access article distributed under the terms of the [Creative Commons Attribution License \(CC BY\)](https://creativecommons.org/licenses/by/4.0/). The use, distribution or reproduction in other forums is permitted, provided the original author(s) and the copyright owner(s) are credited and that the original publication in this journal is cited, in accordance with accepted academic practice. No use, distribution or reproduction is permitted which does not comply with these terms.

# Corrigendum: The oxidative aging model integrated various risk factors in type 2 diabetes mellitus at system level

Yao Chen<sup>1</sup>, Lilin Yao<sup>1</sup>, Shuheng Zhao<sup>1</sup>, Mengchu Xu<sup>1</sup>, Siwei Ren<sup>1</sup>, Lu Xie<sup>2\*</sup>, Lei Liu<sup>3\*</sup> and Yin Wang<sup>1,4\*</sup>

<sup>1</sup>Department of Biomedical Engineering, School of Intelligent Medicine, China Medical University, Shenyang, Liaoning, China, <sup>2</sup>Shanghai-MOST Key Laboratory of Health and Disease Genomics & Institute for Genome and Bioinformatics, Shanghai Institute for Biomedical and Pharmaceutical Technologies, Shanghai, China, <sup>3</sup>Intelligent Medicine Institute, Fudan University, Shanghai, China, <sup>4</sup>Key Laboratory of GI Cancer Etiology and Prevention in Liaoning Province, The First Hospital of China Medical University, Shenyang, China

## KEYWORDS

oxidative stress, type 2 diabetes mellitus, energy metabolism, aging, pan-cancer analysis

## A Corrigendum on

### The oxidative aging model integrated various risk factors in type 2 diabetes mellitus at system level

By Chen Y, Yao L, Zhao S, Xu M, Ren S, Xie L, Liu L and Wang Y (2023). *Front. Endocrinol.* 14:1196293. doi: 10.3389/fendo.2023.1196293

In the published article, there was an error in [Figure 4](#) as published. The censored samples were missed in the previous version, herein they have been added. The corrected [Figure 4](#) and its caption appear below.

In the published article, there was an error, which was related to [Figure 4](#).

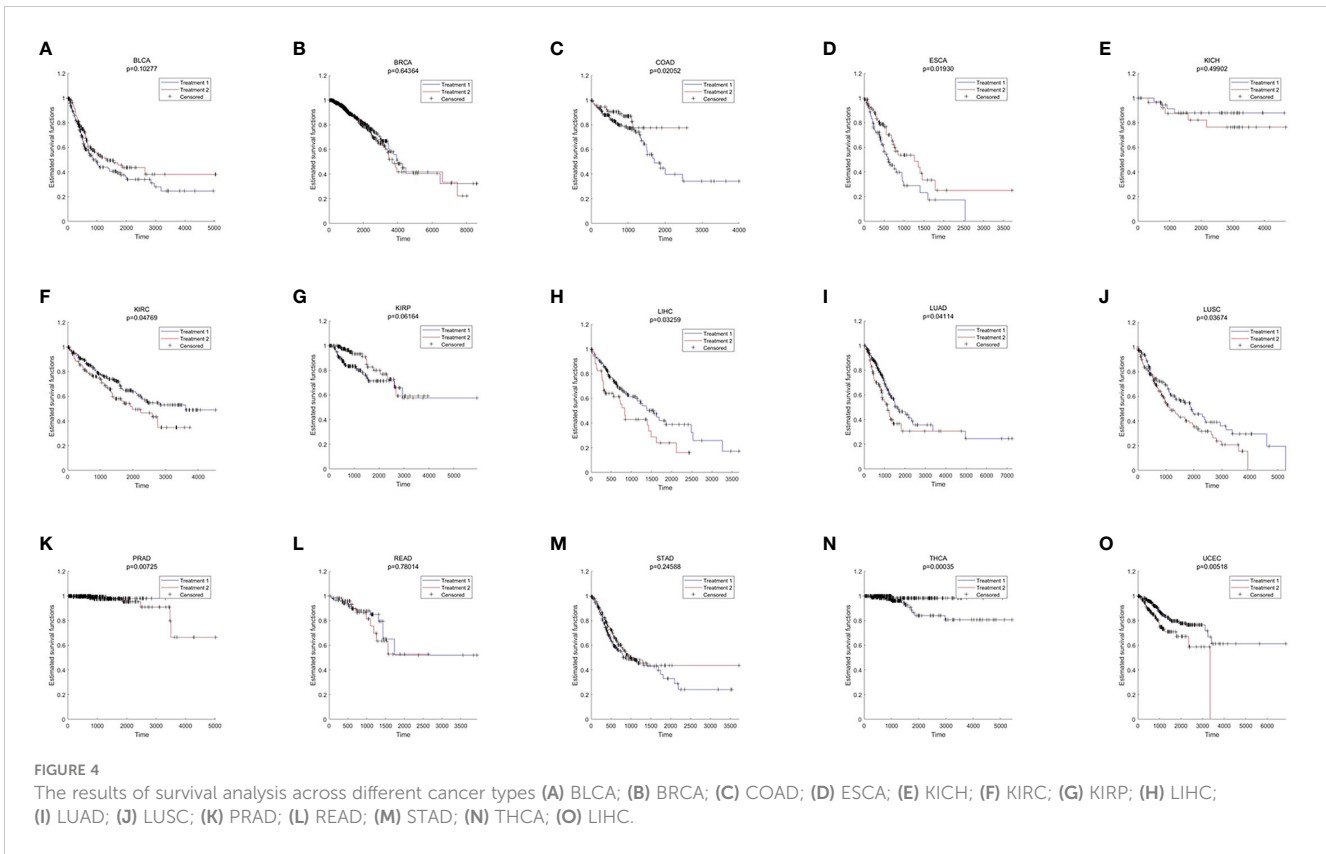
A correction has been made to “**Result 2.6**”, *Pan-cancer Analysis Further Verified the Mechanism of Oxidative aging in T2DM*, Paragraph 1. This sentence previously stated:

“There were 9 out of 15 cancer types with significant results (including BLCA, COAD, KIRC, KIRP, LUSC, PRAD, READ, THCA and UCEC, shown in [Figure 4](#)).”

The corrected sentence appears below:

“There were 9 out of 15 cancer types with significant results (including COAD, ESCA, KIRC, LIHC, LUAD, LUSC, PRAD, THCA and UCEC, shown in [Figure 4](#)).”

The authors apologize for this error and state that this does not change the scientific conclusions of the article in any way. The original article has been updated.



### Publisher's note

All claims expressed in this article are solely those of the authors and do not necessarily represent those of their affiliated

organizations, or those of the publisher, the editors and the reviewers. Any product that may be evaluated in this article, or claim that may be made by its manufacturer, is not guaranteed or endorsed by the publisher.