

## Supplemental Online Content

Davis SM, Teerlink C, Lynch JA, et al. Prevalence, morbidity, and mortality of men with sex chromosome aneuploidy in the Million Veteran Program cohort. *JAMA Netw Open*. 2024;7(3):e244113. doi:10.1001/jamanetworkopen.2024.4113

**eFigure 1.** Scatterplot of Sex Chromosome Array Intensity

**eFigure 2.** Self-Reported Medical History in Males with 47,XXY Stratified by Clinical Ascertainment Status

**eTable 1.** Standardized Mortality Ratio by Cause of Death for Males with 47,XXY, 47,XYY, and Either Sex Chromosome Aneuploidy Compared With Matched 46,XY Controls

**eTable 2.** Military Service, Morbidity, and Participant Reported Outcome Measures in Males With 47,XXY Stratified by Clinical Diagnosis Status

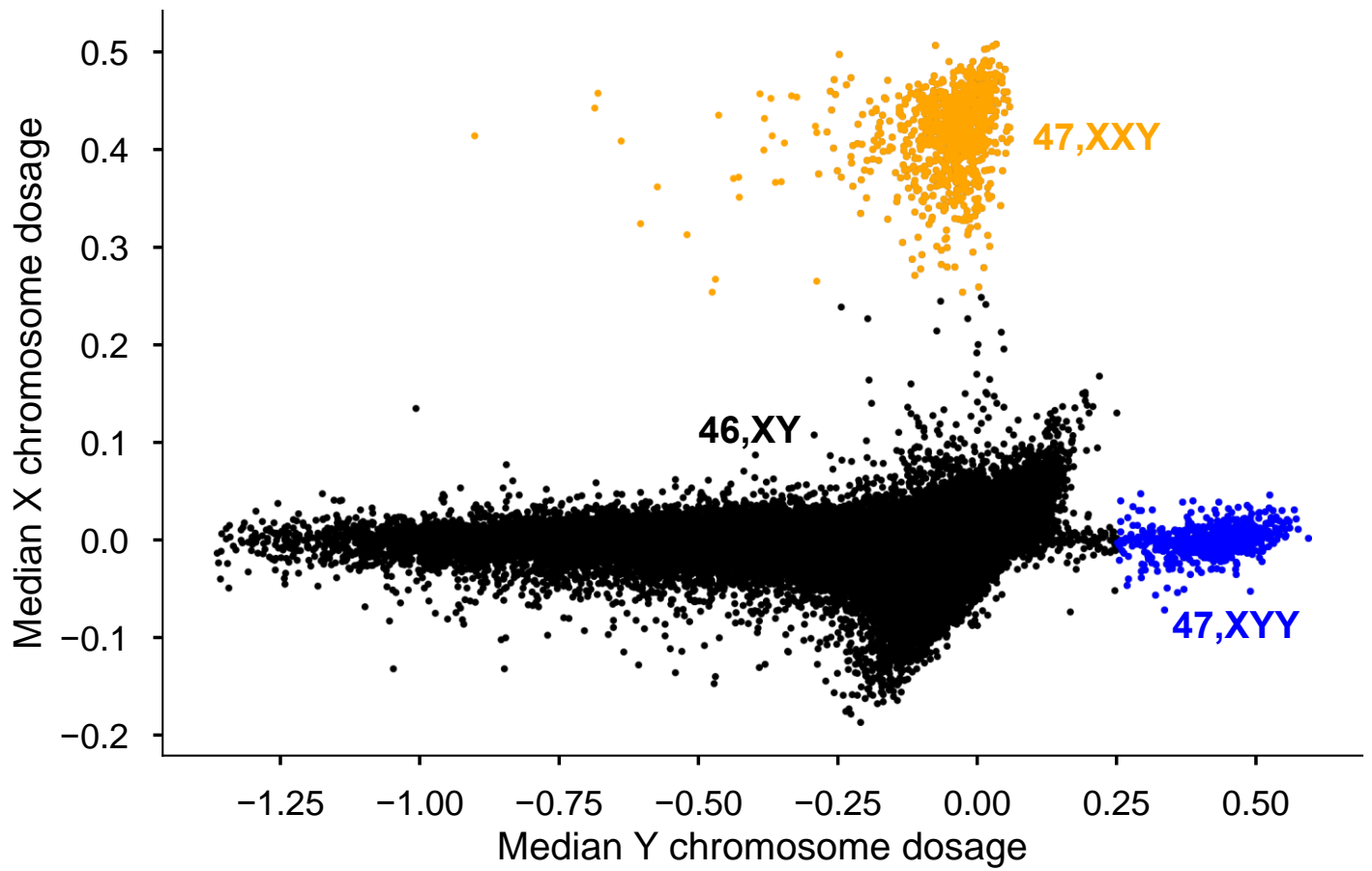
**eTable 3.** Self-Reported Medical History in Males With Either Sex Chromosome Aneuploidy Compared to Matched 46,XY Controls

**eTable 4.** Self-Reported Medical History in Males With 47,XXY Compared With Matched 46,XY Controls

**eTable 5.** Self-Reported Medical History in Males With 47,XYY Compared With Matched 46,XY Controls

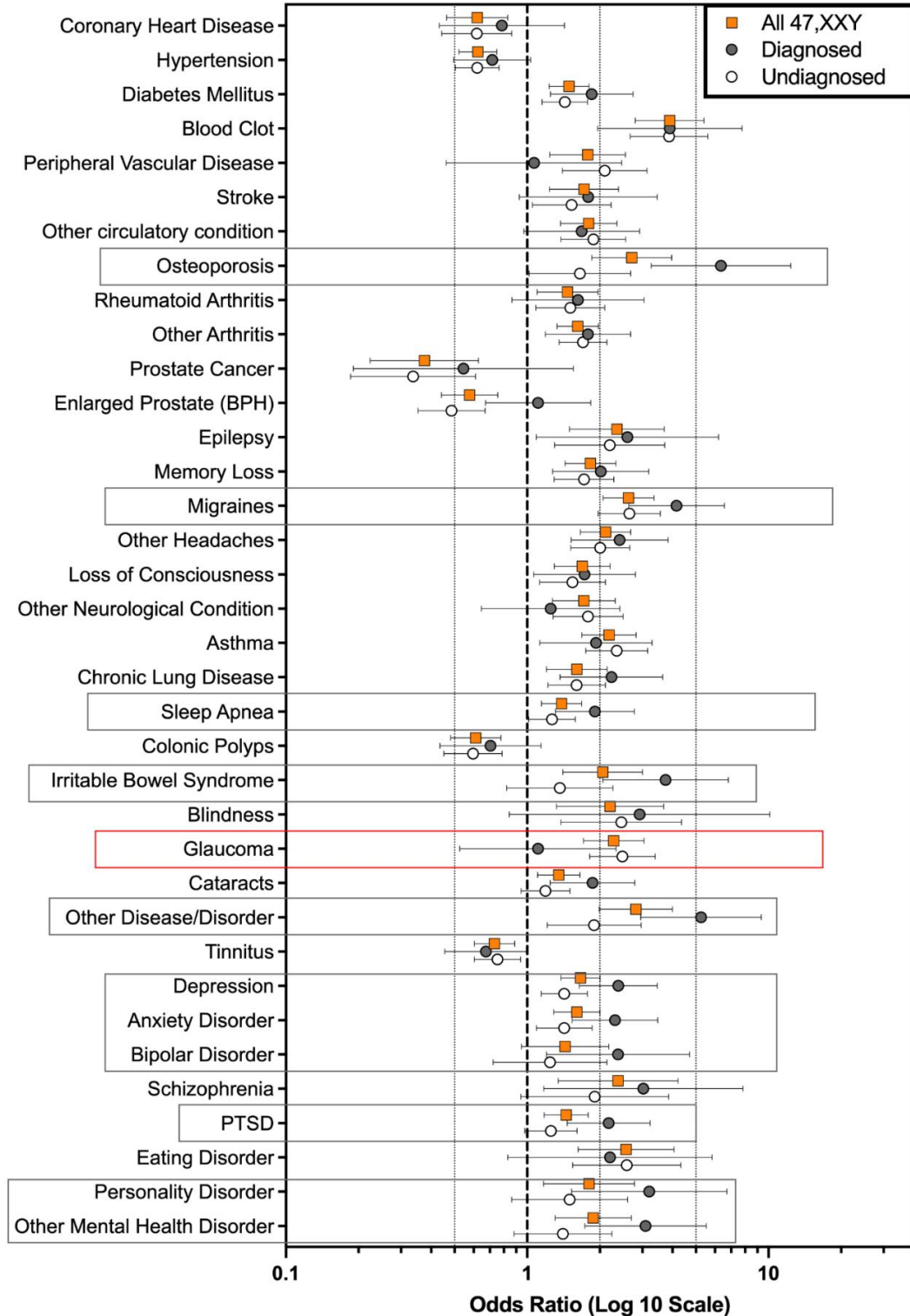
This supplemental material has been provided by the authors to give readers additional information about their work.

**Supplemental Figure 1.** Scatterplot of sex chromosome array intensity over >20,000 X probes and 157 Y probes in all male MVP participants to identify men with an additional X or Y chromosome. Orange dots are males with 47,XXY, blue dots are males with 47,XYY, and black are males with 46,XY



**Supplemental Figure 2. Self-Reported Medical History in Males with 47,XXY Stratified by Clinical Ascertainment Status**

Forest plot with odds ratios (point estimate) and 95% confidence intervals (error bars) for self-reported conditions in men with 47,XXY versus 46,XY controls from the Baseline Survey. Only conditions that were significantly different ( $p < 0.05$ ) between men with 47,XXY and matched 46,XY controls (orange squares) are included. Individuals were then stratified into a clinical diagnosis of Klinefelter syndrome (gray circles) or no clinical diagnosis (white circles). Statistically significant differences in odds of reporting a specific medical condition between the diagnosed versus undiagnosed groups are indicated in the dashed rectangular boxes; gray indicates higher odds in those with a clinical diagnosis, red indicates higher odds in those without a clinical diagnosis.





	Clinically Diagnosed Cohort			Undiagnosed Cohort			47,XXY diagnosed vs undiagnosed p-value
	Cases Total N=226 BL survey n=137 Life	Total N=1130 BL survey n=687 Life survey n=475	cases vs controls p-value	Cases Total N=640 BL survey n=437 Life survey	Total N=3200 BL survey n=2092 Life survey n=1560	cases vs controls p-value	
<b>Demographics and Military Service</b>							
Age at enrollment (yrs)	56.9 ± 13.4	56.9 ± 13.4	1	62.7 ± 11.2	62.7 ± 11.2	1	<0.001
European Genetic Ancestry	190 (84.1%)	950 (84.1%)	1	539 (84.2%)	2695 (84.2%)	1	0.958
Service Era: Vietnam	91 (40.2%)	456 (40.4%)	0.980	373 (58.3%)	1847 (57.7%)	0.793	<0.001
Military Branch: Army <sup>^</sup>	64 (50.0%)	312 (50.4%)	0.722	180 (53.9%)	869 (51.7%)	0.036	0.959
Combat Service: Yes <sup>^</sup>	45 (21.3%)	137 (14.5%)	<0.001	80 (12.5%)	410 (12.8%)	0.124	0.005
Deployed outside the US	96 (70.1%)	493 (71.8%)	0.680	329 (74.8%)	1585 (75.8%)	0.669	0.317
Exposure to biochemical warfare	24 (17.5%)	58 (8.4%)	0.009	50 (11.4%)	200 (9.6%)	0.420	0.200
Honorable Discharge <sup>^</sup>	120 (95.2%)	578 (93.8%)	0.776	303 (91.0%)	1566 (93.7%)	0.202	0.184
<b>Healthcare Utilization</b>							
Care within VA system: 100%	68 (49.6%)	289 (42.1%)	0.004	189 (43.0%)	912 (43.6%)	0.485	0.009
Outpatient encounters/yr	26.6 (14.9-43.2)	16.7 (9.3-28.0)	<0.001	22.2 (11.3-36.0)	17.2 (9.6-28.3)	<0.001	0.001
Emergency encounters/yr	0.46 (0.21-1.0)	0.37 (0.15-0.77)	0.005	0.26 (0.05-0.76)	0.33 (0.14-0.67)	<0.001	<0.001
Inpatient encounters/yr	0.11 (0.0-0.33)	0.05 (0.0-0.24)	<0.001	0.13 (0.0-0.33)	0.06 (0.0-0.24)	<0.001	0.455
Hospitalized in past year (VA)	40 (29.2%)	113 (16.5%)	<0.001	122 (27.9%)	359 (17.2%)	<0.001	0.642
<b>Medical Characteristics &amp; Morbidity</b>							
Height (cm) at enrollment	182.7 ± 8.4	178.4 ± 7.0	<0.001	182.5 ± 7.7	178.0 ± 7.2	<0.001	0.822
Weight (kg) at enrollment	103.3 ± 21.9	96.1 ± 20.1	<0.001	103.1 ± 23.4	94.9 ± 20.1	<0.001	0.902
BMI (kg/m <sup>2</sup> ) at enrollment	31.4 ± 6.2	30.8 ± 6.2	0.153	31.4 ± 6.8	30.4 ± 6.1	<0.001	0.954
Charlson Comorbidity Index	3.65 ± 2.73	3.39 ± 2.55	0.198	4.53 ± 2.68	4.13 ± 2.47	<0.001	<0.001
>10 Prescription Medications	35 (25.5%)	95 (13.8%)	<0.001	97 (22.0%)	311 (14.9%)	<0.001	0.052
Sexual Health Problems	18 (20.5%)	40 (8.4%)	0.002	39 (11.6%)	152 (9.7%)	0.272	0.036
Fertility Problems	52 (59.1%)	31 (6.5%)	<0.001	164 (48.8%)	110 (7.1%)	<0.001	0.094
<b>Psychosocial Morbidity</b>							
VR-12 Physical Functioning	34.8 ± 12.4	38.4 ± 13.3	0.005	34.0 ± 11.9	37.6 ± 12.8	<0.001	0.519
VR-12 Mental Health	42.8 ± 15.0	46.5 ± 14.0	0.009	46.0 ± 13.6	48.2 ± 13.2	0.003	0.023
MOS Cog-R	12.6 ± 6.0	12.2 ± 7.6	0.608	12.6 ± 7.7	11.5 ± 7.1	0.020	0.985
PHQ4 Total	3.14 ± 3.4	2.45 ± 3.29	0.084	2.87 ± 3.5	2.23 ± 3.2	0.002	0.487
PHQ4 Anxiety Subscale	1.54 ± 1.87	1.19 ± 1.7	0.106	1.42 ± 1.86	1.12 ± 1.7	0.005	0.598
PHQ4 Depression Subscale	1.6 ± 1.78	1.29 ± 1.78	0.128	1.51 ± 1.91	1.14 ± 1.68	<0.001	0.657
PCL Total	36.5 ± 17.0	32.6 ± 16.3	0.055	35.6 ± 17.1	31.5 ± 15.7	<0.001	0.649
<b>Mortality</b>							
Deceased	20 (8.8%)	127 (11.2%)	0.292	90 (14.1%)	410 (12.8%)	0.493	0.092

**Table S2. Military Service, Morbidity, and Participant Reported Outcome Measures in Males with 47,XXY Stratified by Clinical Diagnosis Status.** Colored text indicate the data source and subsequently the sample size available for that variable: black is the electronic health record database, blue is the Baseline Survey, and green is the Lifestyle Survey. Data are shown as mean ± standard deviation (SD) and/or median (range) for continuous data, and n (%) for categorical data, unless otherwise specified. Bolded p-values indicate statistical significance at an alpha of 0.05. <sup>^</sup>Percentages are calculated from the total with non-missing data; chi-squared analyses included missing as a category. VA = Veterans Affairs; VR-12 = Veterans RAND 12 Item Health Survey (higher values indicate better QoL). MOS Cog-R = Medical Outcomes Survey Cognitive Functioning Revised Scale (higher values indicate more problems). PHQ-4 = Patient Health Questionnaire-4 (higher values indicate more concern). PCL = Post-traumatic stress disorder Checklist (higher values indicate more concern).

**Table S3a. Self-Reported Medical History in Males with Either Sex Chromosome Aneuploidy Compared to Matched 46,XY Controls**

	Any SCA		Controls		OR	U95%CI	L95%CI
	with	w/o	with	w/o			
Circ-Congestive Heart Failure	69	1005	303	4840	1.10	1.44	0.84
<b>Circ-Coronary Artery Disease</b>	<b>114</b>	<b>960</b>	<b>779</b>	<b>4364</b>	<b>0.67</b>	<b>0.82</b>	<b>0.54</b>
Circ-High Cholesterol	555	519	2604	2539	1.04	1.19	0.91
<b>Circ-Hypertension</b>	<b>584</b>	<b>490</b>	<b>3164</b>	<b>1979</b>	<b>0.75</b>	<b>0.85</b>	<b>0.65</b>
Circ-Myocardial Infarction	111	963	612	4531	0.85	1.06	0.69
<b>Circ-Other Circ System Problem</b>	<b>165</b>	<b>909</b>	<b>427</b>	<b>4716</b>	<b>2.00</b>	<b>2.43</b>	<b>1.65</b>
<b>Circ-PE or DVT</b>	<b>123</b>	<b>951</b>	<b>177</b>	<b>4966</b>	<b>3.63</b>	<b>4.61</b>	<b>2.85</b>
<b>Circ-Peripheral Vascular Disease</b>	<b>81</b>	<b>993</b>	<b>228</b>	<b>4915</b>	<b>1.76</b>	<b>2.29</b>	<b>1.35</b>
<b>Circ-Stroke</b>	<b>95</b>	<b>979</b>	<b>282</b>	<b>4861</b>	<b>1.67</b>	<b>2.13</b>	<b>1.31</b>
<b>Circ-Transient Ischemic Attack</b>	<b>55</b>	<b>1019</b>	<b>191</b>	<b>4952</b>	<b>1.40</b>	<b>1.90</b>	<b>1.03</b>
<b>Endo-Diabetes</b>	<b>401</b>	<b>673</b>	<b>1403</b>	<b>3740</b>	<b>1.59</b>	<b>1.82</b>	<b>1.38</b>
Endo-Thyroid problem	88	986	434	4709	0.97	1.23	0.76
<b>GI-Acid Reflux/GERD</b>	<b>401</b>	<b>673</b>	<b>1764</b>	<b>3553</b>	<b>1.20</b>	<b>1.38</b>	<b>1.05</b>
<b>GI-Bowel obstruction</b>	<b>29</b>	<b>1045</b>	<b>76</b>	<b>5067</b>	<b>1.85</b>	<b>2.85</b>	<b>1.20</b>
GI-Celiac disease	3	1071	10	5133	1.44	5.23	0.40
<b>GI-Colon Polyps</b>	<b>178</b>	<b>896</b>	<b>1212</b>	<b>3931</b>	<b>0.64</b>	<b>0.77</b>	<b>0.54</b>
GI-Crohn's Disease	7	1067	26	5117	1.29	2.98	0.56
<b>GI-Irritable Bowel Syndrome</b>	<b>45</b>	<b>1029</b>	<b>139</b>	<b>5004</b>	<b>1.57</b>	<b>2.22</b>	<b>1.12</b>
GI-Liver condition (eg cirrhosis)	41	1033	190	4953	1.03	1.46	0.73
GI-Other	67	1007	263	4880	1.23	1.63	0.94
GI-Peptic Ulcers	50	1024	188	4955	1.29	1.77	0.94
GI-Ulcerative colitis	13	1061	61	5082	1.02	1.86	0.56
<b>HEENT-Blindness-any cause</b>	<b>38</b>	<b>1036</b>	<b>91</b>	<b>5052</b>	<b>2.04</b>	<b>2.99</b>	<b>1.39</b>
<b>HEENT-Cataracts</b>	<b>292</b>	<b>782</b>	<b>1177</b>	<b>3966</b>	<b>1.26</b>	<b>1.46</b>	<b>1.08</b>
HEENT-Deafness (partial/severe)	340	734	1556	3587	1.07	1.23	0.93
<b>HEENT-Glaucoma</b>	<b>154</b>	<b>920</b>	<b>312</b>	<b>4831</b>	<b>2.59</b>	<b>3.18</b>	<b>2.11</b>
HEENT-Macular Degeneration	50	1024	233	4910	1.03	1.41	0.75
<b>HEENT-Tinnitus</b>	<b>343</b>	<b>731</b>	<b>1965</b>	<b>3178</b>	<b>0.76</b>	<b>0.87</b>	<b>0.66</b>
Infx-Hepatitis C	52	1022	284	4859	0.87	1.18	0.64
Infx-HIV/AIDS	12	1062	54	5089	1.06	2.00	0.57
Infx-Other	37	1037	124	5019	1.44	2.10	0.99
Infx-Tuberculosis	22	1052	90	5053	1.17	1.88	0.73
<b>MH-ADHD</b>	<b>55</b>	<b>1019</b>	<b>182</b>	<b>4961</b>	<b>1.47</b>	<b>2.00</b>	<b>1.08</b>
<b>MH-Anxiety/Panic</b>	<b>217</b>	<b>857</b>	<b>835</b>	<b>4308</b>	<b>1.31</b>	<b>1.54</b>	<b>1.11</b>
<b>MH-Bipolar</b>	<b>56</b>	<b>1018</b>	<b>195</b>	<b>4948</b>	<b>1.40</b>	<b>1.89</b>	<b>1.03</b>
<b>MH-Depression</b>	<b>374</b>	<b>700</b>	<b>1458</b>	<b>3685</b>	<b>1.35</b>	<b>1.55</b>	<b>1.17</b>
<b>MH-Eating disorder</b>	<b>55</b>	<b>1019</b>	<b>110</b>	<b>5033</b>	<b>2.47</b>	<b>3.44</b>	<b>1.77</b>

<b>MH-Other</b>	<b>80</b>	<b>994</b>	<b>214</b>	<b>4929</b>	<b>1.85</b>	<b>2.42</b>	<b>1.42</b>
<b>MH-Personality disorder</b>	<b>56</b>	<b>1018</b>	<b>147</b>	<b>4996</b>	<b>1.87</b>	<b>2.56</b>	<b>1.36</b>
MH-PTSD	194	880	812	4331	1.18	1.40	0.99
<b>MH-Schizophrenia</b>	<b>34</b>	<b>1040</b>	<b>75</b>	<b>5068</b>	<b>2.21</b>	<b>3.33</b>	<b>1.47</b>
MH-Social Phobia	33	1041	175	4968	0.90	1.31	0.62
<b>MSK-Gout</b>	<b>82</b>	<b>992</b>	<b>644</b>	<b>4599</b>	<b>0.59</b>	<b>0.75</b>	<b>0.46</b>
<b>MSK-Osteoarthritis</b>	<b>240</b>	<b>834</b>	<b>968</b>	<b>4175</b>	<b>1.24</b>	<b>1.46</b>	<b>1.06</b>
<b>MSK-Osteoporosis</b>	<b>57</b>	<b>1017</b>	<b>154</b>	<b>4989</b>	<b>1.82</b>	<b>2.48</b>	<b>1.33</b>
<b>MSK-Other arthritis</b>	<b>306</b>	<b>768</b>	<b>1153</b>	<b>3990</b>	<b>1.38</b>	<b>1.60</b>	<b>1.19</b>
MSK-Other MSK problem	217	857	1114	4029	0.92	1.08	0.78
<b>MSK-Rheumatoid arthritis</b>	<b>107</b>	<b>967</b>	<b>414</b>	<b>4729</b>	<b>1.26</b>	<b>1.58</b>	<b>1.01</b>
Neuro-ALS	2	1072	3	5140	3.20	19.15	0.53
Neuro-Dementia	16	1058	50	5093	1.54	2.72	0.87
<b>Neuro-Epilepsy</b>	<b>47</b>	<b>1027</b>	<b>115</b>	<b>5028</b>	<b>2.00</b>	<b>2.83</b>	<b>1.42</b>
<b>Neuro-Loss of consciousness</b>	<b>149</b>	<b>925</b>	<b>485</b>	<b>4658</b>	<b>1.55</b>	<b>1.88</b>	<b>1.27</b>
<b>Neuro-Memory loss/impairment</b>	<b>168</b>	<b>906</b>	<b>571</b>	<b>4572</b>	<b>1.48</b>	<b>1.79</b>	<b>1.23</b>
<b>Neuro-Migraines</b>	<b>183</b>	<b>891</b>	<b>461</b>	<b>4682</b>	<b>2.09</b>	<b>2.51</b>	<b>1.73</b>
Neuro-MS	4	1070	27	5116	0.71	2.03	0.25
<b>Neuro-Other</b>	<b>118</b>	<b>956</b>	<b>352</b>	<b>4791</b>	<b>1.68</b>	<b>2.09</b>	<b>1.35</b>
<b>Neuro-Other Headaches</b>	<b>199</b>	<b>875</b>	<b>540</b>	<b>4603</b>	<b>1.94</b>	<b>2.32</b>	<b>1.62</b>
<b>Neuro-Parkinson's disease</b>	<b>21</b>	<b>1053</b>	<b>60</b>	<b>5083</b>	<b>1.69</b>	<b>2.79</b>	<b>1.02</b>
Neuro-Spinal Cord Injury	95	979	389	4754	1.19	1.50	0.94
Neuro-Traumatic Brain Injury	48	1026	199	4944	1.16	1.60	0.84
<b>Onc-Breast cancer</b>	<b>6</b>	<b>1068</b>	<b>5</b>	<b>5138</b>	<b>5.77</b>	<b>18.95</b>	<b>1.76</b>
Onc-Colorectal cancer	16	1058	86	5057	0.89	1.52	0.52
Onc-Lung cancer	16	1058	61	5082	1.26	2.19	0.72
Onc-other cancer	74	1000	366	4777	0.97	1.25	0.75
<b>Onc-Prostate cancer</b>	<b>42</b>	<b>1032</b>	<b>347</b>	<b>4796</b>	<b>0.56</b>	<b>0.78</b>	<b>0.41</b>
Onc-Skin cancer	137	937	742	4401	0.87	1.05	0.71
<b>Other disease/disorder</b>	<b>80</b>	<b>994</b>	<b>188</b>	<b>4955</b>	<b>2.12</b>	<b>2.78</b>	<b>1.62</b>
<b>Other-Benign Prostatic Hypertrophy</b>	<b>157</b>	<b>917</b>	<b>957</b>	<b>4186</b>	<b>0.75</b>	<b>0.90</b>	<b>0.62</b>
<b>Pulm-Asthma</b>	<b>172</b>	<b>902</b>	<b>444</b>	<b>4699</b>	<b>2.02</b>	<b>2.44</b>	<b>1.67</b>
<b>Pulm-Chronic lung disease</b>	<b>154</b>	<b>920</b>	<b>502</b>	<b>4641</b>	<b>1.55</b>	<b>1.88</b>	<b>1.27</b>
<b>Pulm-Sleep apnea</b>	<b>373</b>	<b>701</b>	<b>1427</b>	<b>3716</b>	<b>1.39</b>	<b>1.59</b>	<b>1.21</b>
Renal-Acute Kidney Disease	20	1054	63	5080	1.53	2.54	0.92
<b>Renal-Kidney Disease no dialysis</b>	<b>76</b>	<b>998</b>	<b>262</b>	<b>4881</b>	<b>1.42</b>	<b>1.85</b>	<b>1.09</b>
<b>Renal-Kidney Disease with dialysis</b>	<b>21</b>	<b>1053</b>	<b>61</b>	<b>5082</b>	<b>1.66</b>	<b>2.74</b>	<b>1.01</b>
Skin Condition	119	955	520	4623	1.11	1.37	0.90
The number of participants endorsing each of the 75 potential conditions from the Baseline Survey and calculated odds ratio (OR) with upper and lower 95% confidence intervals (U95%CI, L95CI). Bolded values are significantly different between SCA cases and controls at an alpha of 0.05							

**Table S3b. Self-Reported Medical History in Males with 47,XXY Compared to Matched 46,XY Controls**

	47,XXY		Controls		OR	U95%CI	L95%CI
	with	w/o	with	w/o			
Circ-Congestive Heart Failure	40	534	167	2591	1.16	1.66	0.81
<b>Circ-Coronary Artery Disease</b>	<b>58</b>	<b>516</b>	<b>423</b>	<b>2335</b>	<b>0.62</b>	<b>0.83</b>	<b>0.46</b>
Circ-High Cholesterol	276	298	1308	1450	1.03	1.23	0.86
<b>Circ-Hypertension</b>	<b>291</b>	<b>283</b>	<b>1716</b>	<b>1042</b>	<b>0.62</b>	<b>0.75</b>	<b>0.52</b>
Circ-Myocardial Infarction	61	513	333	2425	0.87	1.16	0.65
<b>Circ-Other Circ System Problem</b>	<b>82</b>	<b>492</b>	<b>234</b>	<b>2524</b>	<b>1.80</b>	<b>2.35</b>	<b>1.37</b>
<b>Circ-PE or DVT</b>	<b>68</b>	<b>506</b>	<b>92</b>	<b>2666</b>	<b>3.89</b>	<b>5.40</b>	<b>2.81</b>
<b>Circ-Peripheral Vascular Disease</b>	<b>43</b>	<b>531</b>	<b>120</b>	<b>2638</b>	<b>1.78</b>	<b>2.55</b>	<b>1.24</b>
<b>Circ-Stroke</b>	<b>52</b>	<b>522</b>	<b>151</b>	<b>2607</b>	<b>1.72</b>	<b>2.39</b>	<b>1.24</b>
Circ-Transient Ischemic Attack	31	543	106	2652	1.43	2.15	0.95
<b>Endo-Diabetes</b>	<b>206</b>	<b>368</b>	<b>753</b>	<b>2005</b>	<b>1.49</b>	<b>1.80</b>	<b>1.23</b>
Endo-Thyroid problem	49	525	237	2521	0.99	1.37	0.72
<b>GI-Acid Reflux/GERD</b>	<b>232</b>	<b>342</b>	<b>947</b>	<b>1985</b>	<b>1.42</b>	<b>1.71</b>	<b>1.18</b>
GI-Bowel obstruction	9	565	25	2733	1.74	3.75	0.81
GI-Celiac disease	1	573	5	2753	0.96	8.24	0.11
<b>GI-Colon Polyps</b>	<b>91</b>	<b>483</b>	<b>649</b>	<b>2109</b>	<b>0.61</b>	<b>0.78</b>	<b>0.48</b>
GI-Crohn's Disease	6	568	11	2747	2.64	7.16	0.97
<b>GI-Irritable Bowel Syndrome</b>	<b>40</b>	<b>534</b>	<b>97</b>	<b>2661</b>	<b>2.05</b>	<b>3.00</b>	<b>1.41</b>
GI-Liver condition (eg cirrhosis)	20	554	100	2658	0.96	1.56	0.59
GI-Other	39	535	141	2617	1.35	1.95	0.94
GI-Peptic Ulcers	19	555	97	2661	0.94	1.55	0.57
GI-Ulcerative colitis	7	567	33	2725	1.02	2.32	0.45
<b>HEENT-Blindness-any cause</b>	<b>22</b>	<b>552</b>	<b>49</b>	<b>2709</b>	<b>2.20</b>	<b>3.67</b>	<b>1.32</b>
<b>HEENT-Cataracts</b>	<b>164</b>	<b>410</b>	<b>630</b>	<b>2128</b>	<b>1.35</b>	<b>1.65</b>	<b>1.10</b>
HEENT-Deafness (partial/severe)	158	416	844	1914	0.86	1.05	0.70
<b>HEENT-Glaucoma</b>	<b>74</b>	<b>500</b>	<b>168</b>	<b>2590</b>	<b>2.28</b>	<b>3.05</b>	<b>1.71</b>
HEENT-Macular Degeneration	22	552	122	2636	0.86	1.37	0.54
<b>HEENT-Tinnitus</b>	<b>180</b>	<b>394</b>	<b>1060</b>	<b>1698</b>	<b>0.73</b>	<b>0.89</b>	<b>0.60</b>
Infx-Hepatitis C	25	549	156	2602	0.76	1.17	0.49
Infx-HIV/AIDS	5	569	28	2730	0.86	2.23	0.33
Infx-Other	22	552	66	2692	1.63	2.66	0.99
Infx-Tuberculosis	12	562	46	2712	1.26	2.39	0.66
<b>MH-ADHD</b>	<b>21</b>	<b>553</b>	<b>94</b>	<b>2664</b>	<b>1.08</b>	<b>1.74</b>	<b>0.66</b>
<b>MH-Anxiety/Panic</b>	<b>131</b>	<b>443</b>	<b>429</b>	<b>2329</b>	<b>1.61</b>	<b>2.00</b>	<b>1.29</b>
MH-Bipolar	30	544	102	2656	1.44	2.18	0.95
<b>MH-Depression</b>	<b>221</b>	<b>353</b>	<b>754</b>	<b>2004</b>	<b>1.66</b>	<b>2.01</b>	<b>1.38</b>
<b>MH-Eating disorder</b>	<b>29</b>	<b>545</b>	<b>56</b>	<b>2702</b>	<b>2.57</b>	<b>4.06</b>	<b>1.62</b>
<b>MH-Other</b>	<b>43</b>	<b>531</b>	<b>114</b>	<b>2644</b>	<b>1.88</b>	<b>2.70</b>	<b>1.31</b>



<b>MH-Personality disorder</b>	<b>29</b>	<b>545</b>	<b>79</b>	<b>2679</b>	<b>1.80</b>	<b>2.79</b>	<b>1.17</b>
<b>MH-PTSD</b>	<b>148</b>	<b>426</b>	<b>533</b>	<b>2225</b>	<b>1.45</b>	<b>1.79</b>	<b>1.18</b>
<b>MH-Schizophrenia</b>	<b>18</b>	<b>556</b>	<b>37</b>	<b>2721</b>	<b>2.38</b>	<b>4.21</b>	<b>1.35</b>
MH-Social Phobia	17	557	91	2667	0.89	1.51	0.53
<b>MSK-Gout</b>	<b>43</b>	<b>531</b>	<b>293</b>	<b>2465</b>	<b>0.68</b>	<b>0.95</b>	<b>0.49</b>
<b>MSK-Osteoarthritis</b>	<b>181</b>	<b>393</b>	<b>611</b>	<b>2147</b>	<b>1.62</b>	<b>1.97</b>	<b>1.33</b>
<b>MSK-Osteoporosis</b>	<b>43</b>	<b>531</b>	<b>80</b>	<b>2678</b>	<b>2.71</b>	<b>3.97</b>	<b>1.85</b>
<b>MSK-Other arthritis</b>	<b>181</b>	<b>393</b>	<b>611</b>	<b>2147</b>	<b>1.62</b>	<b>1.97</b>	<b>1.33</b>
MSK-Other MSK problem	126	448	584	2174	1.05	1.30	0.84
<b>MSK-Rheumatoid arthritis</b>	<b>66</b>	<b>508</b>	<b>224</b>	<b>2534</b>	<b>1.47</b>	<b>1.97</b>	<b>1.10</b>
Neuro-ALS	0	574	2	2756			
Neuro-Dementia	10	564	27	2731	1.79	3.73	0.86
<b>Neuro-Epilepsy</b>	<b>29</b>	<b>545</b>	<b>61</b>	<b>2697</b>	<b>2.35</b>	<b>3.70</b>	<b>1.50</b>
<b>Neuro-Loss of consciousness</b>	<b>84</b>	<b>490</b>	<b>254</b>	<b>2504</b>	<b>1.69</b>	<b>2.20</b>	<b>1.30</b>
<b>Neuro-Memory loss/impairment</b>	<b>106</b>	<b>468</b>	<b>304</b>	<b>2454</b>	<b>1.83</b>	<b>2.33</b>	<b>1.44</b>
<b>Neuro-Migraines</b>	<b>115</b>	<b>459</b>	<b>240</b>	<b>2518</b>	<b>2.63</b>	<b>3.35</b>	<b>2.06</b>
Neuro-MS	2	572	15	2743	0.64	2.80	0.15
<b>Neuro-Other</b>	<b>64</b>	<b>510</b>	<b>188</b>	<b>2570</b>	<b>1.72</b>	<b>2.31</b>	<b>1.27</b>
<b>Neuro-Other Headaches</b>	<b>112</b>	<b>462</b>	<b>284</b>	<b>2474</b>	<b>2.11</b>	<b>2.69</b>	<b>1.66</b>
Neuro-Parkinson's disease	11	563	33	2725	1.61	3.21	0.81
Neuro-Spinal Cord Injury	50	524	205	2553	1.19	1.64	0.86
Neuro-Traumatic Brain Injury	27	547	108	2650	1.21	1.86	0.79
<b>Onc-Breast cancer</b>	<b>6</b>	<b>568</b>	<b>3</b>	<b>2755</b>	<b>9.70</b>	<b>38.90</b>	<b>2.42</b>
Onc-Colorectal cancer	8	566	46	2712	0.83	1.78	0.39
Onc-Lung cancer	7	567	32	2726	1.05	2.39	0.46
Onc-other cancer	40	534	193	2565	1.00	1.42	0.70
<b>Onc-Prostate cancer</b>	<b>16</b>	<b>558</b>	<b>196</b>	<b>2562</b>	<b>0.37</b>	<b>0.63</b>	<b>0.22</b>
Onc-Skin cancer	69	505	386	2372	0.84	1.10	0.64
<b>Other disease/disorder</b>	<b>53</b>	<b>521</b>	<b>96</b>	<b>2662</b>	<b>2.82</b>	<b>4.00</b>	<b>1.99</b>
<b>Other-Benign Prostatic Hypertrophy</b>	<b>69</b>	<b>505</b>	<b>528</b>	<b>2230</b>	<b>0.58</b>	<b>0.76</b>	<b>0.44</b>
<b>Pulm-Asthma</b>	<b>94</b>	<b>480</b>	<b>227</b>	<b>2531</b>	<b>2.18</b>	<b>2.83</b>	<b>1.68</b>
<b>Pulm-Chronic lung disease</b>	<b>68</b>	<b>506</b>	<b>213</b>	<b>2545</b>	<b>1.61</b>	<b>2.14</b>	<b>1.20</b>
<b>Pulm-Sleep apnea</b>	<b>199</b>	<b>375</b>	<b>763</b>	<b>1995</b>	<b>1.39</b>	<b>1.68</b>	<b>1.15</b>
Renal-Acute Kidney Disease	8	566	36	2722	1.07	2.31	0.49
Renal-Kidney Disease no dialysis	41	533	141	2617	1.43	2.05	1.00
Renal-Kidney Disease with dialysis	9	565	32	2726	1.36	2.86	0.64
Skin Condition	60	514	277	2481	1.05	1.40	0.78

The number of participants endorsing each of the 75 potential conditions from the Baseline Survey and calculated odds ratio (OR) with upper and lower 95% confidence intervals (U95%CI, L95CI). Bolded values are significantly different between SCA cases and controls at an alpha of 0.05

Table S3c. Self-Reported Medical History in Males with 47,XYY Compared to Matched 46,XY Controls							
	47,XYY		Controls		OR	U95%CI	L95%CI
	with	w/o	with	w/o			
Circ-Congestive Heart Failure	29	471	136	2249	1.02	1.54	0.67
<b>Circ-Coronary Artery Disease</b>	<b>56</b>	<b>444</b>	<b>356</b>	<b>2029</b>	<b>0.72</b>	<b>0.97</b>	<b>0.53</b>
Circ-High Cholesterol	279	221	1296	1089	1.06	1.29	0.87
Circ-Hypertension	293	207	1448	937	0.92	1.11	0.75
Circ-Myocardial Infarction	50	450	279	2106	0.84	1.15	0.61
<b>Circ-Other Circ System Problem</b>	<b>83</b>	<b>417</b>	<b>193</b>	<b>2192</b>	<b>2.26</b>	<b>2.98</b>	<b>1.71</b>
<b>Circ-PE or DVT</b>	<b>55</b>	<b>445</b>	<b>85</b>	<b>2300</b>	<b>3.34</b>	<b>4.77</b>	<b>2.35</b>
<b>Circ-Peripheral Vascular Disease</b>	<b>38</b>	<b>462</b>	<b>108</b>	<b>2277</b>	<b>1.73</b>	<b>2.54</b>	<b>1.18</b>
<b>Circ-Stroke</b>	<b>43</b>	<b>457</b>	<b>131</b>	<b>2254</b>	<b>1.62</b>	<b>2.32</b>	<b>1.13</b>
Circ-Transient Ischemic Attack	24	476	85	2300	1.36	2.17	0.86
<b>Endo-Diabetes</b>	<b>195</b>	<b>305</b>	<b>650</b>	<b>1735</b>	<b>1.71</b>	<b>2.09</b>	<b>1.40</b>
Endo-Thyroid problem	39	461	197	2188	0.94	1.34	0.66
GI-Acid Reflux/GERD	169	331	817	1568	0.98	1.20	0.80
<b>GI-Bowel obstruction</b>	<b>20</b>	<b>480</b>	<b>51</b>	<b>2334</b>	<b>1.91</b>	<b>3.23</b>	<b>1.13</b>
GI-Celiac disease	2	498	5	2380	1.91	9.88	0.37
<b>GI-Colon Polyps</b>	<b>87</b>	<b>413</b>	<b>563</b>	<b>1822</b>	<b>0.68</b>	<b>0.88</b>	<b>0.53</b>
GI-Crohn's Disease	1	499	15	2370	0.32	2.40	0.04
GI-Irritable Bowel Syndrome	5	495	42	2343	0.56	1.43	0.22
GI-Liver condition (eg cirrhosis)	21	479	90	2295	1.12	1.82	0.69
GI-Other	28	472	122	2263	1.10	1.68	0.72
<b>GI-Peptic Ulcers</b>	<b>31</b>	<b>469</b>	<b>91</b>	<b>2294</b>	<b>1.67</b>	<b>2.53</b>	<b>1.10</b>
GI-Ulcerative colitis	6	494	28	2357	1.02	2.48	0.42
<b>HEENT-Blindness-any cause</b>	<b>16</b>	<b>484</b>	<b>42</b>	<b>2343</b>	<b>1.84</b>	<b>3.31</b>	<b>1.03</b>
HEENT-Cataracts	128	372	547	1838	1.16	1.44	0.93
<b>HEENT-Deafness (partial/severe)</b>	<b>182</b>	<b>318</b>	<b>712</b>	<b>1673</b>	<b>1.34</b>	<b>1.65</b>	<b>1.10</b>
<b>HEENT-Glaucoma</b>	<b>80</b>	<b>420</b>	<b>144</b>	<b>2241</b>	<b>2.96</b>	<b>3.97</b>	<b>2.21</b>
HEENT-Macular Degeneration	28	472	111	2274	1.22	1.86	0.79
<b>HEENT-Tinnitus</b>	<b>163</b>	<b>337</b>	<b>905</b>	<b>1480</b>	<b>0.79</b>	<b>0.97</b>	<b>0.64</b>
Infx-Hepatitis C	27	473	128	2257	1.01	1.54	0.66
Infx-HIV/AIDS	7	493	26	2359	1.29	2.98	0.56
Infx-Other	15	485	58	2327	1.24	2.21	0.70
Infx-Tuberculosis	10	490	44	2341	1.09	2.17	0.54
<b>MH-ADHD</b>	<b>34</b>	<b>466</b>	<b>88</b>	<b>2297</b>	<b>1.90</b>	<b>2.86</b>	<b>1.27</b>
MH-Anxiety/Panic	86	414	406	1979	1.01	1.31	0.78
MH-Bipolar	26	474	93	2292	1.35	2.11	0.87
MH-Depression	153	347	704	1681	1.05	1.30	0.85
<b>MH-Eating disorder</b>	<b>26</b>	<b>474</b>	<b>54</b>	<b>2331</b>	<b>2.37</b>	<b>3.82</b>	<b>1.47</b>
<b>MH-Other</b>	<b>37</b>	<b>463</b>	<b>100</b>	<b>2285</b>	<b>1.83</b>	<b>2.70</b>	<b>1.24</b>
<b>MH-Personality disorder</b>	<b>27</b>	<b>473</b>	<b>68</b>	<b>2317</b>	<b>1.95</b>	<b>3.07</b>	<b>1.23</b>

MH-PTSD	46	454	279	2106	0.76	1.06	0.55
<b>MH-Schizophrenia</b>	<b>16</b>	<b>484</b>	<b>38</b>	<b>2347</b>	<b>2.04</b>	<b>3.69</b>	<b>1.13</b>
MH-Social Phobia	16	484	84	2301	0.91	1.56	0.53
<b>MSK-Gout</b>	<b>39</b>	<b>461</b>	<b>351</b>	<b>2134</b>	<b>0.51</b>	<b>0.73</b>	<b>0.36</b>
MSK-Osteoarthritis	59	441	357	2028	0.76	1.02	0.57
MSK-Osteoporosis	14	486	74	2311	0.90	1.61	0.50
MSK-Other arthritis	125	375	542	1843	1.13	1.42	0.91
MSK-Other MSK problem	91	409	530	1855	0.78	1.00	0.61
MSK-Rheumatoid arthritis	41	459	190	2195	1.03	1.47	0.73
Neuro-ALS	2	498	1	2384	9.57	105.80	0.87
Neuro-Dementia	6	494	23	2362	1.25	3.08	0.51
Neuro-Epilepsy	18	482	54	2331	1.61	2.77	0.94
<b>Neuro-Loss of consciousness</b>	<b>65</b>	<b>435</b>	<b>231</b>	<b>2154</b>	<b>1.39</b>	<b>1.87</b>	<b>1.04</b>
Neuro-Memory loss/impairment	62	438	267	2118	1.12	1.51	0.84
<b>Neuro-Migraines</b>	<b>68</b>	<b>432</b>	<b>221</b>	<b>2164</b>	<b>1.54</b>	<b>2.06</b>	<b>1.15</b>
Neuro-MS	2	498	12	2373	0.79	3.56	0.18
<b>Neuro-Other</b>	<b>54</b>	<b>446</b>	<b>164</b>	<b>2221</b>	<b>1.64</b>	<b>2.27</b>	<b>1.19</b>
<b>Neuro-Other Headaches</b>	<b>87</b>	<b>413</b>	<b>256</b>	<b>2129</b>	<b>1.75</b>	<b>2.28</b>	<b>1.34</b>
Neuro-Parkinson's disease	10	490	27	2358	1.78	3.71	0.86
Neuro-Spinal Cord Injury	45	455	184	2201	1.18	1.66	0.84
Neuro-Traumatic Brain Injury	21	479	91	2294	1.11	1.79	0.68
Onc-Breast cancer	0	500	2	2383			
Onc-Colorectal cancer	8	492	40	2345	0.95	2.05	0.44
Onc-Lung cancer	9	491	29	2356	1.49	3.17	0.70
Onc-other cancer	34	466	173	2212	0.93	1.37	0.64
Onc-Prostate cancer	26	474	151	2234	0.81	1.24	0.53
Onc-Skin cancer	68	432	356	2029	0.90	1.19	0.68
Other disease/disorder	27	473	92	2293	1.42	2.21	0.92
Other-Benign Prostatic Hypertrophy	88	412	429	1956	0.97	1.25	0.76
<b>Pulm-Asthma</b>	<b>78</b>	<b>422</b>	<b>217</b>	<b>2168</b>	<b>1.85</b>	<b>2.44</b>	<b>1.40</b>
<b>Pulm-Chronic lung disease</b>	<b>86</b>	<b>414</b>	<b>289</b>	<b>2096</b>	<b>1.51</b>	<b>1.96</b>	<b>1.16</b>
<b>Pulm-Sleep apnea</b>	<b>174</b>	<b>326</b>	<b>664</b>	<b>1721</b>	<b>1.38</b>	<b>1.70</b>	<b>1.13</b>
<b>Renal-Acute Kidney Disease</b>	<b>12</b>	<b>488</b>	<b>27</b>	<b>2358</b>	<b>2.15</b>	<b>4.27</b>	<b>1.08</b>
Renal-Kidney Disease no dialysis	35	465	121	2264	1.41	2.08	0.95
<b>Renal-Kidney Disease with dialysis</b>	<b>12</b>	<b>488</b>	<b>29</b>	<b>2356</b>	<b>2.00</b>	<b>3.94</b>	<b>1.01</b>
Skin Condition	59	441	243	2142	1.18	1.60	0.87
The number of participants endorsing each of the 75 potential conditions from the Baseline Survey and calculated odds ratio (OR) with upper and lower 95% confidence intervals (U95%CI, L95CI). Bolded values are significantly different between SCA cases and controls at an alpha of 0.05							