

ORNITHOLOGICAL BIBLIOGRAPHY OF THE AZORES (1)

By Gérald le Grand (2) & Duarte Furtado (2)

With 8 figures

Only scientific publications up to 1980 are included in this bibliography. Other old narrations containing information on Azorean ornithology are being assembled for future publication. Certain unpublished works will also be dealt with.

The part for consultation has been arranged in three sections. The first presents a numbered list of papers and books in chronological order up to 1980. Last minute alterations obliged us to eliminate some items and to use «bis» for repeated numbers in some cases. The second section consists of the list of papers under their authors in alphabetical order. Finally, the third section consists of an index of the scientific names of the species cited.

The index contains three types of entries:

- The names of the genera, in capital letters, followed by the specific and subspecific names, which lead to their numbers in the chronological list. The latter are accompanied by the relevant page numbers, in brackets.
- The names of the species, in small letters in bold-faced type, lead to the names of the genera.
- The names of the subspecies, in normal small letters, lead to the genera and species.

Example: *Fringilla coelebs moreletti*

entered under FRINGILLA, coelebs and moreletti, with the bibliographical references only under the complete name.

Papers of Nos. 17, 41, 72, 74, 76 have not been consulted by us; all other works are available in our library.

Cette bibliographie comprend uniquement les publications à caractère scientifique jusqu'à l'année 1980 incluse; non inclus les textes anciens de chroniqueurs qui feront l'objet d'une publication ultérieure. Nous avons tenu compte de travaux non publiés.

Cette bibliographie est composée tout d'abord d'une liste numérotée des publications par ordre chronologique jusqu'en 1980; des altéra-

-
- (1) All facsimiles are of paintings by D. M. Reid-Henry, from D. A. BANNERMAN & W. M. BANNERMAN: Birds of the Atlantic Islands, OLIVER & BOYD, Edinburgh and London; reproduced with Mrs. W. Mary Bannerman's permission. Except fig. 1 from GODMAN (1866, pl. 3) with acknowledgment to the British Ornithologist Union and the IBIS.
 - (2) Unidade de Protecção da Natureza, Departamento de Ecologia, Universidade dos Açores, P-9502 AÇORES — Codex.

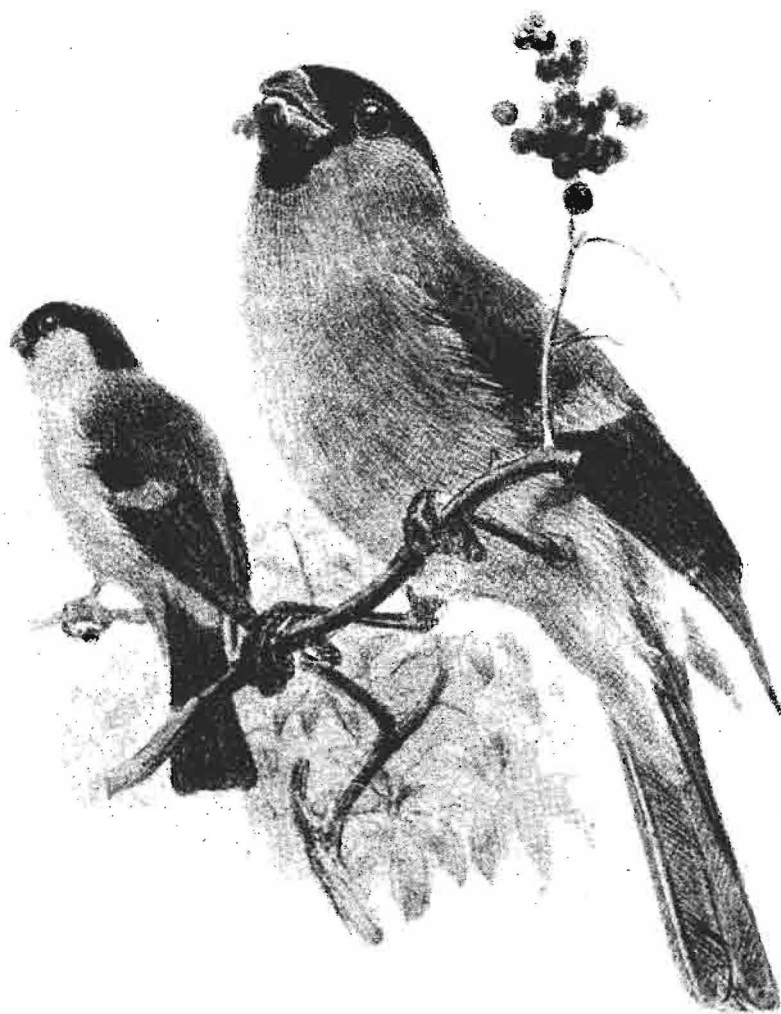


Fig. 1. — *Pyrrhula murina* Godman, 1866, from IBIS 1866, Pl. III

tions de dernière heure nous ont obligé à éliminer quelques numéros et à utiliser des numéros «bis» pour certains travaux. En second nous avons une liste alphabétique des noms d'auteurs et enfin un indice des noms scientifiques des espèces citées.

Cet indice comprend trois types d'entrées:

- Le nom des genres, en majuscules, explicités par espèces et sous-espèces, qui renvoie aux publications par leur numéro de la liste chronologique suivi entre parenthèses des numéros des pages concernées.
- Le nom des espèces, en caractères minuscules gras, renvoie aux noms de genre.
- Le nom des sous-espèces, en minuscules, renvoie aux genres et espèces.

Exemple: *Fringilla coelebs moreletti*

entrée à FRINGILLA, *coelebs*, moreletti et les références à FRINGILLA au paragraphe *coelebs*.

Pour cet indice, n'ont pas été consultées les publications n.ºs 17-41-72-74-76, nous posédons tous les autres travaux.

Esta bibliografia compreende unicamente as publicações de carácter científico até ao ano de 1980, não incluindo portanto os textos antigos de crónicas que serão objecto duma publicação a aparecer brevemente. Tomamos em conta certos trabalhos não publicados.

A presente bibliografia é composta, primeiramente por uma lista numerada das publicações por ordem cronológica até 1980; alterações de última hora obrigaram-nos a eliminar alguns números e a utilizar números «bis» por certos trabalhos; seguidamente uma lista por ordem alfabética dos nomes dos autores e, por último, um índice dos nomes científicos das espécies citadas.

O índice compreende três tipos de entradas:

- o nome do género, escrito em maiúsculas, explicitado por espécies e sub-espécies reenviando às publicações pelo seu número da lista cronológica, seguindo-se entre parentesis o número das páginas em questão;
- o nome das espécies, em minúsculas negras, reenvia ao género;
- o nome das sub-espécies está em minúsculas reenviando ao género e espécie.

Por exemplo: *Fringilla coelebs moreletti*

Entrada em FRINGILLA, *coelebs*, e moreletti, com as referências bibliográficas ao FRINGILLA no parágrafo *coelebs* moreletti.

Para a elaboração deste índice, não foram consultadas as seguintes publicações: n.ºs 17-41-72-74-76, que não pudemos encontrar, no entanto possuímos as restantes referências.



Fig. 2. — *Pyrrhula pyrrhula murina*

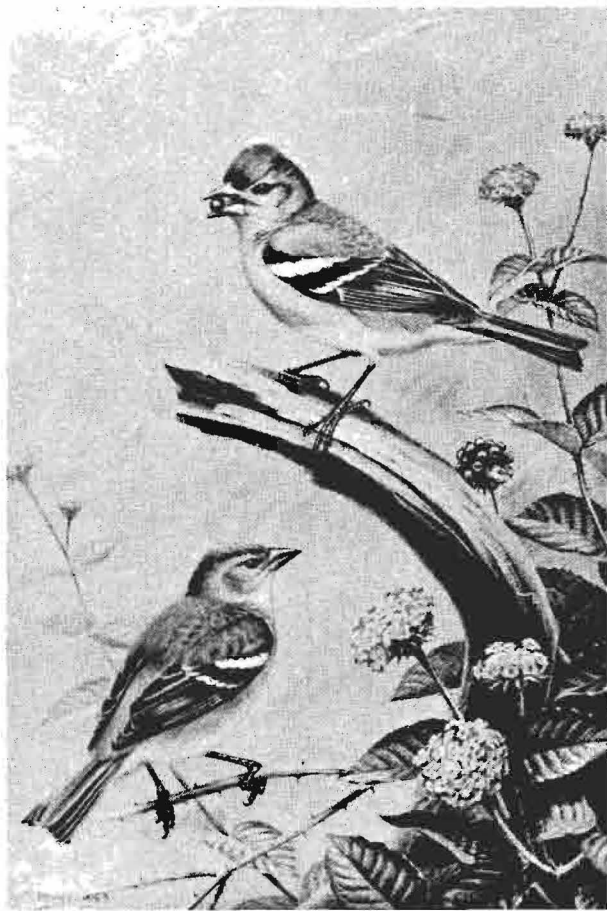


Fig. 3. — *Fringilla coelebs moreletti*

CHRONOLOGICAL LIST

- 1 DROUËT, H. (1858) - Rapport à sa majesté le roi de Portugal sur un voyage d'exploration scientifique aux îles Açores effectué par MM. A. MORELET et H. DROUËT pendant le printemps et l'été de 1857. - *Ann. Soc. Linn. de Maine et Loire* 4.
- 2 DROUËT, H. (1858) - Rapport à sa majesté le roi de Portugal sur un voyage d'exploration scientifique aux îles Açores exécuté par MM. Arthur MORELET et Henri DROUËT. - *Mém. Soc. Acad. de l'Aude* 22.
- 3 PUCHERAN, M. (1859) - Observation sur deux espèces de passereaux originaires des Açores. - *Rev. et Mag. de Zoologie*: 409-414, pl. 16.
- 4 MORELET, A. (1860) - *Notice sur l'histoire naturelle des Açores, suivie d'une description des mollusques terrestres de cet archipel.* - J. - B. BAILLIÈRE & Fils, Paris.
- 5 DROUËT, H. (1861) - Eléments de la faune açoréenne. - *Mém. Soc. Acad. de l'Aude* 25. 245 p.
- 6 GODMAN, F. DU CANE (1866) - On the birds of the Azores. - *IBIS* 2: 88-109, pl. 3.
- 7 BARBOSA DU BOCAGE, J. V. (1866) - A ornithologia dos Açores. - *Jorn. Scien. Math. Phys. Natur.* 1: 89-92.
- 8 GODMAN, F. DU CANE (1870) - *Natural history of the Azores or Western islands.* - London, John van Voorst. 358p.
- 9 BARBOSA DU BOCAGE, J. V. (1873) - *Natural history of the Azores by F. Du Cane Godman, London 1870.* - *Jorn. Scien. Math. Phys. Natur* 4: 279-280.
- 10 SEEBOHM (1883) - *History of British Birds* 1: 454p.
- 11 SIMROTH, H. (1888) - Ueber die Behandlung der Vögel bei den Portugiesen. - *Monat. Deut. Bei. Schusse. Vogelwelt* 9: 1-7.
- 12 SIMROTH, H. (1888) - Ueber die Nahrung des Mäusebussards. - *Monatsschrift d. D. V. z. S. d. Vogelwelt* 13 Juni: 216-217.
- 13 SIMROTH, H. (1888) - Zur Kenntniss der Azorenfauna. - *Archiv für Naturgeschichte* 54 (1): 179-234.
- 14 HARTERT, E. & OGILVIE - GRANT (1905) - On the birds of the Azores. *Novit. Zool* 12: 80-128.
- 14 b. THANNER, R. von (1908) - Ein Kleiner Beitrag zur Lebensweise von *Pyrrhula pyrrhula murina* (Godm.) *Orn. Jahrb.* 19 (3-4): 120-124.
- 15 LOWE P. R. (1908) - Letter on the redestruction of the Azorean Bullfinch. *IBIS*: 198-199.

- 16 CHAVES, F. A. (1909) - Introdução de algumas espécies zoológicas na ilha de São Miguel depois da sua descoberta.
(1911) *Diario dos Açores*, S. Mig. 22p.
(1949) *Açoreana* 4 (4): 325-342.
- 17 GODMAN, F. DU CANE (1907-1910) - *Monograph of the Petrels*.
- 18 JOURDAIN, F. C. R. (1910) - Description des oeufs de *Pyrhula murina* (Godm.) *Bull. Br. Orn. Club* 25 N.º 162: 118-119.
- 19 BANNERMAN, D. A. (1914) - Distribution and nidification of the Tubinares in the North Atlantic Islands. - *IBIS*: 438-494.
- 20 HARTERT, E. (1917) - On the forms of *Coturnix coturnix*. - *Novit. Zool.* 24: 420-425.
- 21 SWANN, H. K. (1919) - *Synoptical list Accipitres*. London, J. WHELDON & Co. p. 43.
- 22 HARTERT, E. (1903-1923) - *Die Vögel der Paläarktischen Fauna*. 1: 43, 84, 586.
- 23 DWIGHT, J. (1922) - Description of a new race of the Lesser Black-backed Gull from the Azores. *Am. Mus. Novit* 44: 1-2.
- 24 MURPHY, R. C. (1923) - Notes on a small collection of birds from the Azores. *IBIS*: 44-49, 190.
- 25 CHAVES, F. A. (1923) - O Priôlo, a ave mais interessante da ilha de São Miguel. *Revista «Os Açores»*, Ponta Delgada Ano 1 N.º 7; and (1947) *Açoreana* 4 (2): 109-116.
- 26 NOBRE, A. (1924) - Contribuições para a fauna dos Açores. - *An. Inst. Zool. Univ. Porto* 1: 41-90, 8 pl.
- 27 UTHEN, U. (1925) - Atlantische Vögel. - *Die Gefiederte Welt* 54: 4-6, 14-15, 27-28, 38-39, 50-52, 64-66.
- 28 LINCOLN (1925) - *AUK* p. 374.
- 29 MURPHY, R. C. & J. P. CHAPIN (1929) - A collection of birds from the Azores. - *Am. Mus. Novit.* 384: 59-81.
- 30 LOWE, P. R. & D. A. BANNERMAN (1930) - The extermination of the Azorean Bullfinch. *IBIS* 6 (2): 374-379. and *Auk* 47: 295-300.
- 31 SKOVGAARD, P. *Danske Fugle* 3:8.
- 32 SCHÜZ & WEIGOLD. (1930) - *Atlas des Vogelzugs*. pl. 38.
- 33 MURPHY, R. C. & J. CHAPIN (1930) - Status of the Azorean Bullfinch. *AUK* 47: 300-301.
- 33 b. MURPHY, R. C. & J. P. CHAPIN (1930) - The Bullfinch of the Azores. *IBIS* 6 (3): 537-539.
- 34 SKOVGAARD, P. (1931) - Zug der Islandischen Vögel und Anschl. Bemerkungen über den Vogelzug in Europa. *Proc. VIII Int. Orn. Cong.* (Amsterdam): 392-405.

- 35 BANNERMAN, D. A. (1931) - Remarks on the Rock Pigeon from the Azores and Madeira; a description of a new race, *Columba livia atlantis*, from the Azores. - *Bull. B. O. C.* 51: 116-117.
- 37 MAYAUD, N. (1931) - Remarques sur l'ostéologie et la systématique des Serins. - *ALAUDA*: 401-410.
- 38 MURPHY, R. C. (1931) - Nidification of the Azorean Moorhen and other species. - *IBIS*: 572-573.
- 39 DE CHAVIGNY, J. & N. MAYAUD (1932) - Sur l'avifaune des Açores, généralités et étude contributive. *ALAUDA* 4: 133-155, 304-348, 416-441.
- 40 DAPOND, Ch. (1933) - Oiseaux bagués. *Le Gerfaut* 23: 36.
- 41 FERREIRA, E. (1933) - Nota breve «sur l'avifaune des Açores». *O Autonomico*, ano 35 N.º 1617, 1 julho 1933, Vila Franca do Campo, São Miguel.
- 42 AGOSTINHO, J. (1935) - Ornitologia açoreana, notas sobre alguns trabalhos recentes. *Açoreana* 1 (2): 113-133.
- 43 HEIM DE BALSAC, H. (1936) - Biogéographie des mammifères et des oiseaux de l'Afrique du nord. - *Bull. Biol. France et de Belgique. Suppl.* 21: chap. 8 p. 139-141.
- 44 THOMSON, A. L. (1936) - *Bird migration*. - Witherby, London, p. 74-77.
- 45 MAYAUD, N. (1937) - Nouvelles données sur l'ornithologie des Açores. - *ALAUDA* 9: 313-330.
- 46 FERREIRA, E. (1938) - The gender «Puffinus» in the azorean islands. *O Autonomico*, S. Miguel, Vila Franca do Campo. 11p.
- 47 SPOLTON, L. (1945) - Ornitologia açoriana. Aves de passagem vistas na Terceira entre 26 de março de 1944 e 31 de março de 1945. *Açoreana* 3 (4): 332-339.
- 48 MAYAUD, N. (1945) - Le mélanisme chez la fauvette à tête noire, *Sylvia atricapilla* (L.). - *ALAUDA* 13: 124-125.
- 49 COOKE, M. T. (1947) - Another transatlantic species. *Bird Banding* 18: 170.
- 50 SPOLTON, L. (1947) - Notes d'ornithologie açoréenne. *ALAUDA* 15: 29-33.
- 51 MAYAUD, N. (1947) - Commentaires et additions (aux notes d'ornithologie açoréennes de L. Spolton). - *ALAUDA* 15: 29-33.
- 52 AGOSTINHO, J. (1947) - Ornitologia açoriana, notas soltas. - *Açoreana* 4 (3): 182-183.
- 52 bis VOOUS, K. H. (1949) - Distributional history of Eurasian Bullfinches, Genus *Pyrrhula*. *The Condor* 51: 52-81.
- 53 MARLER, P. & D. J. BOATMAN (1951) - Observations on the birds of Pico, Azores. - *IBIS* 93: 90-99.

- 54 SOUTHERN, H. (1951) - Melanic Blackcaps in the Atlantic islands. *IBIS* 93: 100-108.
- 55 MARLER, P. (1952) - Variation in the song of the Chaffinch. *IBIS* 94: 458-471.
- 56 AGOSTINHO, J. (1954) - Notas ornitológicas. *Açoreana* 5 (2): 184-186.
- 57 VAURIE, C. (1954) - Systematic notes on palearctic birds. N.º 8 Sylviinae: the Genus *Regulus*. *Am. Mus. Novit.* 1684: 1-9.
- 58 BOURNE, W. R. P. (1955) - On the status and appearance of the races of Cory's Shearwater, *Procellaria diomedea*. *IBIS* 97: 145-149.
- 59 VAURIE, C. (1957) - Systematic notes on Palaearctic birds N.º 25, Motacillidae: the Genus *Motacilla*. *Am. Mus. Novit.* 1832: 1-16.
- 60 SCHEER, G. (1957) - Einige Bemerkungen über die Vögel der Azoren. *Vogelwelt* 78: 115-120.
- 61 VAURIE, C. (1959) - *The birds of the Palearctic Fauna*, a systematic reference. I Passeriforme. WITHERBY, London. p. 127.
- 63 ULFSTRAND, S. (1961) - On the vertebrate fauna of the Azores. Report N.º 22 from the Lund University Expedition in 1957 to the Azores and Madeira. *Bol. Mus. Mun. Funchal* 19 (49): 75-86.
- 64 KNECHT, S. (1961) - Ein Beitrag zur Kenntnis der azorischen Vogelwelt. *Anz. Orn. Gesellschaft in Bayern* 6 (2): 121-137.
- 65 AGOSTINHO, J. (1963) - Variation dans l'avifaune des Açores - Visiteurs occasionnels de l'hiver 1963 aux Açores. *ALAU-DA* 31: 305-307.
- 66 CABRAL, J. M. A. (1964) - Observations ornithologiques dans l'île de São Miguel (Açores) 1960-1963. *Açoreana* 6 (1): 49-60.
- 67 AGOSTINHO, J. (1964) - Notas ornitológicas, 1 - Variações na avifauna dos Açores, 2 - Visitantes ocasionais no inverno de 1963. *AÇOREANA* 6 (1): 72-83.
- 68 BANNERMAN, D. A. (1964) - On the status of *Puffinus assimilis baroli* in the Azores archipelago. *Bull. B. O. C.* 84: 111-112.
- 69 WILLIAMSON (1964) - *Identification guide for ringers*. B. T. O. N.º 3 p.14.
- 70 MALLET, G. E. & L. J. COGHLAN (1964) - Cory's Shearwater, *Procellaria diomedea*, breeding in the Azores. *IBIS* 106: 123-125.
- 70 bis Report of the Oxford University Women's Azores Expedition (1960) - 7 - Zoological Report: 12-15.
- 71 BANNERMAN, D. A. (1965) - Some reflections on two recent visits to the Azores archipelago. *Ois. Rev. Fr. Orn.* 35: 22-34.

- 72 KNECHT, S. (1965) - Eine Nacht unter Sturmvögeln. *Vogelkosmos* 4: 101-103.
- 73 VALEN, L. VAN (1965) - Morphological variation and width of ecological niches. *Amer. Natur.* 99: 377-390.
- 74 KNECHT, S. (1966) - Atlantische Walpurgisnacht (Vögel als Bergleute). *Das Tier* 3: 8-11 and *Kanarien Freund* 14 (1969): 270-273.
- 75 BANNERMAN, D. A. & W. M. BANNERMAN (1966) - *Birds of Atlantic islands. Vol. 3 - A history of the birds of the Azores.* Oliver and Boyd, London & Edinburgh. 262p.
- 76 KNECHT, S. (1967) - Einer der seltensten Vögel, aber dennoch ein Aschenputtel: der Azoren Gimpel. *Das Tier*, April 1967: 20-21. and (1971) *Kanarien Freund Nürnberg*, 17 Sept. 1971: 257-258.
- 77 BANNERMAN, D. A. & W. M. BANNERMAN (1968) - *Birds of Atlantic Islands. Vol. IV: a history of the birds of the Cape Verde islands.* Oliver & Boyd, Edinburgh. 458p. Addenda to volume II and III p.451-452.
- 78 KNECHT, S. (1968) - Der Azorengimpel, Seltenheit par excellence. *Vogelkosmos* 5: 158-?.
- 79 KNECHT, S. & U. SCHEER (1968) - Lautäußerung und Verhalten des Azoren-Buchfinken, *Fringilla coelebs moreletti*. *Zeitschrift für Tierpsychologie* 25: 155-165.
- 80 VEGTEN, J. A. VAN (1968) - The Azores Bullfinch is not extinct. Gull-billed Tern on São Miguel, Azores. *ARDEA* 56: 194, 196.
- 81 VEGTEN, J. A. VAN & W. J. A. SCHIPPER (1968) - First observation of the Wren on São Miguel, Azores. *ARDEA* 56: 194-195.
- 82 SCHIPPER, W. J. A. & J. A. VAN VEGTEN (1968) - Two American Redstarts (*Setophaga ruticilla*) near the Azores. *ARDEA* 56: 195-196.
- 83 BANNERMAN, D. A. (1969) - Recent records new to the North Atlantic Islands. *Bull. B. O. C.* 89: 86-88.
- 83 bis BOERE, G. C. (1969) - Verslag van de Azoren Reis van 9 Januari-2 februari 1969.-Verslag van het Verblisf op San Miguel- 21 januari-2 februari. 27p. (Not published).
- 83 ter DATHE, H. & W. FISCHER (1969) - Bachstelze, *Motacilla alba*, auf den Azoren. *J. Orn.* 110 (2): 220.
- 84 CABRAL, J. M. A. (1970) - Observações ornitológicas: 7 setembro 1966 - 12 fevereiro 1970 10p. (Not published).
- 85 KNECHT, S. & U. SCHEER (1971) - Die Vögel der Azoren. *Orn. Bonn. Zool. Beiträge* 22 (3-4): 275-296.
- 86 KNECHT, S. & U. SCHEER (1972) - Die Liste der Vogelarten von S. Miguel/Azoren des Gaspar Fructuoso (†1591). *Bonn. Zool. Beitr.* 23 (1): 66-69.

- 87 BEURIER, N. (1973) - La Bécasse des bois aux Açores. *La Moredere* 105: 18-20.
- 88 STURHAN, D. (1973) - Ergebnisse der Forschungsreise auf die Azoren-1969. Int. Forschungsprojekt Makaronesischer Raum. VI Beitrag zur Avifauna der Azoren. - *Bol. Mus. Mun. Funchal* 27: 66-73.
- 89 MARSHALL, W. H. (1973) - Notes on European Woodcock. - *Journal paper N.º 8880, Minnesota Agricultural Station, St Paul, Minn.* 55108.
- 90 MARSHALL, W. H. (1971) - Notes on the Wood Pigeon of Terceira, Azores. (not published)
- 91 MARSHALL, W. H. - Notes on birds of Terceira, Azores. (not published) (1971).
- 92 MOORE, N. W. (1975) - The diurnal flight of the Azorean bat (*Nyctalus azoreum*) and the avifauna of the Azores. *J. Zool. London* 177: 483-486. Note N.º 33 from the mammal soc. by D. M. STODDART.
- 93 LE GRAND, G. (1977) - Apparition du Moineau domestique à São Miguel (Açores). *ALAUDA* 45: 339-340.
- 94 REINER GARCIA, F. (1977) - Nota sobre a ocorrência de um exemplar de Mergulhão-anão (*Plautus alle*) em águas açoreanas. *Primeiro Cong. Nac. Orn.* Porto abril 1977. Doc. N.º 2. (not published)
- 95 MOREIRA DA SILVA, A. (1977) - Notas sobre a anilhagem de aves nas ilhas de S. Miguel e Santa Maria, Açores, em 1973. *Primeiro Cong. Nac. Orn.* Porto, abril 1977. Doc. N.º 11 (not published)
- 96 LE GRAND, G. (1977) - Approche écologique de l'avifaune des Açores. *Rel. Com. Lab. Ecol. Aplic. Inst. Univ. dos Açores* N.º 5, 28p.
- 97 LE GRAND, G. (1977) - Prospection ornithologique au Pico da Vara (S. Miguel-Açores). *Rel. Com. Lab. Ecol. Aplic. Inst. Univ. dos Açores* N.º 6, 10p.
- 98 MOREIRA DA SILVA, A. M. (1977) - Algumas observações sobre a nidificação da Gaivota (*Larus argentatus atlantis*) na Lagoa do Fogo. *Est. Exp. Divulg. Circ. Flor. Ponta Delgada* N.º 6, 11p. reprinted in 1980, *Informação Agrícola*, Supl. dez. 1980, 4p.
- 99 MOREIRA DA SILVA, A. M. (1977) - Prospecção da densidade da Codorniz na ilha de São Miguel 1972/73 a 1976/77. - *Est. Exp. Divulg. Circ. Flor. Ponta Delgada* N.º 8, 42p.

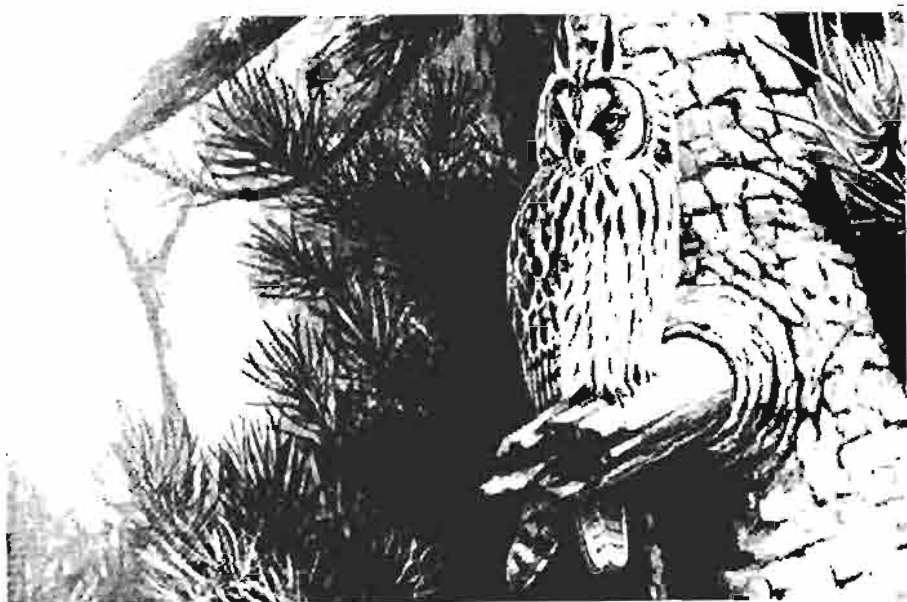


Fig. 4. — *Asio otus otus* (above) Fig. 6. — *Motacilla cinerea schmitzi* (below)

- 100 LE GRAND, G. (1978) - Le Moineau et les Açores. I *Enc. Nac. sobre Desenv. Econ. e Conserv. do Ambiente*. Porto abril 1978. (not published)
- 101 LE GRAND, G. & D. FURTADO (1978) - Notas ornitológicas (in Levantamento Ecológico da ilha do Pico) *Rel. Com. Lab. Ecol. Aplic. Inst. Univ. dos Açores* N.º 7.
- 102 FURTADO, D. S. (1979) - Sobre a passagem invernal do Mergulo-anão nos Açores. *Nota Div. Prot. Nat. Orn. Depart. Ecol. Inst. Univ. dos Açores* N.º 1, 4p.
- 103 LE GRAND, C. (1979) - Passage d'oiseaux sur l'île de São Miguel. Açores. *Nota N.º 2 Div. Prot. Nat. Orn. Depart. Ecol. Inst. Univ. dos Açores*, 6p.
- 104 FURTADO, D. S. & G. LE GRAND (1979) - Présence hivernal du Mergule nain, aux Açores. *ALAUDA* 47: 113-114.
- 105 GRANT, P. R. (1979) - Evolution of the Chaffinch, *Fringilla coelebs*, on the Atlantic Islands. *Biol. J. Linn. Soc.* 11: 301-332.
- 106 FURTADO, D. S. (1980) - O Mergulo-anão, ave de passagem no inverno nos Açores. *Arquipélago Ser. Cien. Nat.* 1: 9-17.
- 107 LE GRAND, G. (1980) - Schéma d'orientation pour la création de réserves naturelles sur les îles de Pico, Graciosa, S. Jorge et Faial. *ARQUIPÉLAGO Ser. Cien. Nat.* 1: 29-51.
- 108 LE GRAND, G. (1980) - Avifauna de Corvo. *ARQUIPÉLAGO Ser. Cienc. Nat.* 1: 52-80.
- 109 LE GRAND, G. (1980) - Preliminary ornithological bibliography on the Azores. *ARQUIPÉLAGO Ser. Cienc. Nat.* 1: 81-89.
- 110 LE GRAND, G. (1980) - L'avifauna terrestre menacée aux Açores. *Nota N.º 3 Div. Prot. Nat. Orn. Depart. Ecol. Univ. Açores*, 13p.
- 111 LE GRAND, G. (1980) - *Propecto de criação duma Reserva Natural Integral na serra do Pico da Vara*, ilha de São Miguel, Açores. Ponta Delgada, Açores 1980. 41p.

ALPHABETICAL LIST

- AGOSTINHO, J. (1935) - Ornitologia açoreana, notas sobre alguns trabalhos recentes. *AÇOREANA* 1 (2): 113-133.
- AGOSTINHO, J. (1947) - Ornitologia açoriana, notas soltas. *AÇOREANA* 4 (3): 182-183.
- AGOSTINHO, J. (1954) - Notas ornitológicas. *AÇOREANA* 5 (2): 184-186.
- AGOSTINHO, J. (1963) - Variation dans l'avifaune des Açores - Visiteurs occasionnels de l'hiver 1963 aux Açores. *ALAUDA* 31: 305-307.

- AGOSTINHO, J. (1964) - Notas ornitológicas, 1 - Variações na avifauna dos Açores, 2 - Visitantes ocasionais no inverno de 1963. *AÇOREANA* 6 (1): 72-83.
- BANNERMAN, D. A. (1914) - Distribution and nidification of the *Tubinares* in the North Atlantic Islands. *IBIS*: 438-494.
- BANNERMAN, D. A. (1931) - Remarks on the Rock Pigeons from the Azores and Madeira; a description of a new race, *Columba livia atlantis* from the Azores. *Bull. B. O. C.* 51: 116-117.
- BANNERMAN, D. A. (1964) - On the status of *Puffinus assimilis baroli* in the Azores archipelago. *Bull. B. O. C.* 84: 111-112.
- BANNERMAN, D. A. (1965) - Some reflections on two recent visits to the Azores archipelago. *Ois Rev. fr. Ornit.* 35: 22-34.
- BANNERMAN, D. A. (1969) - Recent records new to the North Atlantic Islands. *Bull. B. O. C.* 89: 86-88.
- BANNERMAN, D. A. & W. M. BANNERMAN (1966) - *Birds of Atlantic Islands-Vol. 3: a history of the birds of the Azores*. Oliver & Boyd, London 262p.
- BANNERMAN, D. A. & W. M. BANNERMAN (1968) - *Birds of Atlantic Islands-Vol. 4: a history of the birds of the Cape Verde islands*. Oliver & Boyd, Edinburgh. 458p. (Addenda to volume 2, 3 p. 451-452).
- BARBOSA DU BOCAGE, J. V. (1866) - A ornithologia dos Açores. *Jorn. Scien. Math. Phys. Nat.* 1: 89-92.
- BARBOSA DU BOCAGE, J. V. (1873) - Natural history of the Azores by F. DU CANE GODMAN, London 1870. *Jorn. Scien. Math. Phys. Nat.* 4: 279-280.
- BEURIER, N. (1973) - La Bécasse des bois aux Açores. *La MORDEREE* 105: 18-20.
- BOERE, G. C. (1969) - Verslag van de Azoren Reis van 9 januari-2 februari 1969 - Verslag van het Verblisf op San Miguel (21 januari -2 februari). 27p. (Not published).
- BOURNE, W. R. P. (1955) - On the status and appearance of the races of Cory's Shearwater, *Procellaria diomedea*. *IBIS* 97: 145-149.
- CABRAL, J. M. A. (1964) - Observations ornithologiques dans l'île de São Miguel (Açores) - 1960-1963. *AÇOREANA* 6 (1): 49-60.
- CABRAL, J. M. A. (1970) - Observações ornitológicas: 7 setembro 1966-12 fevereiro 1970. (Not published).
- CHAVES, F. A. (1911) - Introdução de algumas espécies zoológicas na ilha de São Miguel depois da sua descoberta. *DIÁRIO DOS AÇORES*, S. Miguel. 22p. (reprint in 1949 *AÇOREANA* 4 (4): 325-342).
- CHAVES, F. A. (1923) - O Priôlo, a ave mais interessante da ilha de São Miguel. revista «OS AÇORES», Ponta Delgada ano 1 n.º 7 (reprint in 1947, *AÇOREANA* 4 (2): 109-116).

- COOKE, M. T. (1947) - Another transatlantic species. *BIRD BANDING* 18: 170.
- DAPOND, Ch. (1933) - Oiseaux bagués. *Le Gerfaut* 23: 36.
- DATHE, H. & W. FISCHER (1969) - Bachstelze, *Motacilla alba*, auf den Azoren. *J. Orn.* 110 (2): 220.
- DE CHAVIGNY, J. & N. MAYAUD (1932) - Sur l'avifaune des Açores, généralités et étude contributive. *ALAUDA* 4: 133-155, 304-348, 416-441.
- DROUËT, H. (1858) - Rapport à sa majesté le Roi de Portugal sur un voyage d'exploration scientifique aux îles Açores effectué par MM. A. MORELET et DROUËT le printemps et l'été de 1857. *Ann. Soc. Linn. de Maine et Loire* 4.
- DROUËT, H. (1858) - Rapport à sa majesté le roi de Portugal sur un voyage d'exploration scientifique aux îles Açores exécuté par MM. Arthur MORELET et Henri DROUËT. *Mém. Soc. Acad. de l'Aude* 22.
- DROUËT, H. (1861) - Eléments de la faune açoréenne. *Mém. Soc. Acad. de l'Aude* 25: 245p.
- DWIGHT, J. (1922) - Description of a new race of the Lesser Black-backed Gull from the Azores. *Am. Mus. Novit.* 44: 1-2.
- FERREIRA, E. (1933) - Nota breve «Sur l'avifaune des Açores». *O AUTONÓMICO*, ano 35, n.º 1617. São Miguel.
- FERREIRA, E. (1938) - The Gender Puffinus in the Azorean Islands. 11p., press of the *O Autonomico* São Miguel.
- FURTADO, D. S. (1979) - Sobre a passagem invernal do Mergulo-anão nos Açores. *Not. Div. Prot. Nat. Orn., Depart. Ecol., Inst. Univ. Açores* n.º 1: 4p.
- FURTADO, D. S. (1980) - O Mergulo-anão, ave de passagem no inverno nos Açores. *ARQUIPÉLAGO Ser. Cien. Nat.* 1: 9-17.
- FURTADO, D. S. & G. LE GRAND (1979) - Présence hivernal du Mergule nain aux Açores. *ALAUDA* 47: 113-114.
- GODMAN, F. DU CANE (1866) - On the birds of the Azores. *IBIS* 2: 88-109, pl.3.
- GODMAN, F. DU CANE (1870) - *Natural history of the Azores or Western islands*. Van Voorst, London 358p.
- GODMAN, F. DU CANE (1907-10) - *Monograph of the petrel*.
- GRANT, P. R. (1979) - Evolution of the Chaffinch, *Fringilla coelebs*, on the Atlantic islands. *Biol. J. Linn. Soc.* 11: 301-332.
- HARTERT, E. (1917) - On the forms of *Coturnix coturnix*. *Novit. Zool.* 24: 420-425.
- HARTERT, E. (1903-23) - Die Vögel der Paläarktischen Fauna. 1: 43, 84, 586.
- HARTERT, E. & OGILVIE-GRANT (1905) - On the birds of the Azores. *Novit. Zool.* 12: 80-128.

- HEIM DE BALSAC, H. (1936) - Biogéographie des mammifères et des oiseaux de l'Afrique du Nord. Suppl. 21 *Bull. Biol. Fr. Belg.*, chap. 8: 139-141.
- JOURDAIN, F. C. R. (1910) - Description des oeufs de *Pyrrhula murina*. Godm. *Bull. B. O. C.* 25: 118-119.
- KNECHT, S. (1961) - Ein Beitrag zur Kenntnis der azorischen Vogelwelt. *Anz. Orn. Gesell. Bayrn.* 6 (2): 121-137.
- KNECHT, S. (1965) - Eine Nacht unter Sturmvögeln. *Vogelkosmos* 4: 101-103.
- KNECHT, S. (1966) - Atlantische Walpurgisnacht-Vögel als Bergleute. *Das Tier* 3: 8-11. (reprint in 1969 *Kanarien Freund* 14: 270-273.).
- KNECHT, S. (1967) - Einer der seltensten Vögel, aber dennoch ein Aschenputtel, der Azoren Gimpel. *Das Tier* 4: 20-21. (reprint in 1971, *Kanarien Freund* Nürnberg Sept.: 257-258.
- KNECHT, S. (1968) - Der Azorengimpel, Seltenheit par excellence. *Vogelkosmos* 5: 158-?
- KNECHT, S. & U. SCHEER (1968) - Lautäußerung und Verhalten des Azoren-Buchfinken, *Fringilla coelebs moreletti*. *Zeit. für Tierpsychologie* 25: 155-165.
- KNECHT, S. & U. SCHEER (1971) - Die Vögel der Azoren. *Orn. Bonn. Zool. Beitr.* 22 (3-4): 275-296.
- KNECHT, S. & U. SCHEER (1972) - Die Liste der Vogelarten von S. Miguel/Azoren des Gaspar Fructuoso († 1591). *Bonn. Zool. Beitr.* 23 (1): 66-69.
- LE GRAND, G. (1977) - Apparition du Moineau domestique à São Miguel (Açores). *ALAUDA* 45: 339-340.
- LE GRAND, G. (1977) - Approche écologique de l'avifaune des Açores. *Rel. Com. Labo. Ecol. Apl. n.º 5 Inst. Univ. Açores* 28p.
- LE GRAND, G. (1977) - Prospection ornithologique au Pico da Vara (S. Miguel-Açores) *Rel. Com. Lab. Ecol. Apl. n.º 6 Inst. Univ. Açores*. 10p.
- LE GRAND, G. (1978) - Le Moineau et les Açores. *I Enc. Nac. sobre Desenvol. Econ. e Conserv. Ambiente*, Porto abril 1978. (Not published).
- LE GRAND, G. (1979) - Passage d'oiseaux sur l'île de São Miguel. *Not. Div. Prot. Nat. Orn. n.º 2 Inst. Univ. Açores*. 6p.
- LE GRAND, G. (1980) - Schéma d'orientation pour la création de réserves naturelles sur les îles de Pico, Graciosa, S. Jorge et Faial. *ARQUIPÉLAGO Ser. Cien. Nat.* 1: 29-51.
- LE GRAND, G. (1980) - Avifaune de Corvo. *ARQUIPÉLAGO Ser. Cien. NAT.* 1: 52-80.

- LE GRAND, G. (1980) - Preliminary ornithological bibliography on the Azores. *ARQUIPÉLAGO Ser. Cien. Nat. 1*: 81-89.
- LE GRAND, G. (1980) - L'avifaune menacée aux Açores - Conf. ICBP Malte nov. 1980. *Not. Div. Prot. Nat. Orn. n.º 3 Univ. Açores* 13p.
- LE GRAND, G. (1980) - *Projecto de criação duma Reserva Integral Natural na serra do Pico da Vara, São Miguel, Açores*. Ponta Delgada, 41 p.
- LE GRAND, G. & D. S. FURTADO (1978) - Notas ornitológicas in Levantamento Ecológico da ilha do Pico. *Rel. Com. Lab. Ecol. Apl. n.º 7 Inst. Univ. Açores*.
- LINCOLN (1925) - *AUK*: 374.
- LOWE, P. R. (1908) - letter: redestruction of Azores Bullfinch. *IBIS*: 198-199.
- LOWE, P. R. & D. A. BANNERMAN (1930) - The extermination of the Azorean Bullfinch. *IBIS* 6 (2): 374-379; *AUK* 47: 295-300.
- MALLETT, G. E. & L. J. COGHLAN (1964) - Cory's Shearwater, *Procellaria diomedea*, breeding in the Azores. *IBIS* 106: 123-125.
- MARLER, P. (1952) - Variation in the song of the Chaffinch. *IBIS* 94: 458-471.
- MARLER, P. & D. J. BOATMAN (1951) - Observations on the birds of Pico, Azores. *IBIS* 93: 90-99.
- MARSHALL, W. H. (1973?) - Notes on European Woodcock. *Jour. Paper n.º 8880, Minn. Agric. Stat.* St. Paul.
- MARSHALL, W. H. (1971) - Notes on the Wood Pigeon of Terceira, Azores. (Not published).
- MARSHALL, W. H. (1971) - Notes on the birds of Terceira, Azores. (Not published).
- MAYAUD, N. (1931) - Remarques sur l'ostéologie et la systématique des Serins. *ALAUDA*: 401-410.
- MAYAUD, N. (1937) - Nouvelles données sur l'ornithologie des Açores. *ALAUDA* 9: 313-330.
- MAYAUD, N. (1945) - Le mélanisme chez la Fauvette à tête noire. *ALAUDA* 13: 124-125.
- MAYAUD, N. (1947) - Commentaires et additions aux notes d'ornithologie açoréenne de L. SPOLTON. *ALAUDA* 15: 29-33.
- MOORE, N. W. (1975) - The diurnal flight of the Azorean bat (*Nyctalus azoreum*) and the avifauna of the Azores. Note n.º 33 from the Mammal Soc. by D. M. STODDART. *J. Zool. London* 177: 483-486.

- MOREIRA DA SILVA, A. M. (1977) - Notas sobre a anilhagem de aves nas ilhas de S. Miguel e Santa Maria em 1973. *I Cong. Nac. Orn.* Porto, abril 1977 Doc. n.º 11. (Not published).
- MOREIRA DA SILVA, A. M. (1977) - Algumas observações sobre a nidificação da Gaivota (*Larus argentatus atlantis*) na lagoa do Fogo. *Est. Exp. Divulg. circ. flor. Ponta Delgada out. 77 n.º 6* 11p. reprint in 1980, *Inf. Agric. Supl. dez.* 80 4p.
- MOREIRA DA SILVA, A. M. (1977) - Prospecção da densidade da Codorniz na ilha de São Miguel 1972/73 e 1976/77. *Est. Exp. Divulg. circ. flor. Ponta Delgada n.º 8* 42p.
- MORELET, A. (1860) - *Notice sur l'histoire naturelle des Açores*, suivie d'une description des mollusques terrestres de cet archipel. J. - B. BAILLIÈRE & Fils, Paris.
- MURPHY, R. C. (1923) - Notes on a small collection of birds from the Azores. *IBIS*: 44-49, 190.
- MURPHY, R. C. (1931) - Nidification of the Azorean Moorhen and other species. *IBIS*: 572-573.
- MURPHY, R. C. & J. P. CHAPIN (1929) - A collection of birds from the Azores. *Am. Mus. Novit. n.º 384*: 59-81.
- MURPHY, R. C. & J. P. CHAPIN (1930) - Status of the Azorean Bullfinch *AUK* 47: 300-301.
- MURPHY, R. C. & J. P. CHAPIN (1930) - The Bullfinch of the Azores. *IBIS* 6 (3): 537-539.
- NOBRE, A. (1924) - Contribuições para a fauna dos Açores. *Ann. Inst. Zool. Univ. Porto* 1: 41-90, 8pl.
- PUCHERAN, M. (1859) - Observations sur deux espèces de passereaux originaires des Açores. *Rev. Mag. Zool.*: 409-414, pl. 16.
- REINER GARCIA, F. (1977) - Nota sobre a ocorrência de um exemplar de mergulhão-anão em águas açoreanas. *I Cong. Nac. Orn. Porto Abril 1977.* doc. n.º 2 (Not published).
- SCHEER, G. (1957) - Einige Bemerkungen über die Vögel der Azoren. *Vogelwelt* 78: 115-120.
- SCHIPPER, W. J. A. & J. A. VAN VEGTEN (1968) - Two American Redstarts (*Setophaga ruticilla*) near the Azores. *ARDEA* 56: 195-196.
- SCHÜZ & WEIGOLD. (1930) - *Atlas des Vogelzugs* p. 38.
- SEEBOHM (1883) - *History of British Birds* 1: 454.
- SIMROTH, H. (1888) - Ueber die Behandlung der Vögel bei den Portugiesen. *Monat. Deut. Bei. Schüsse Vogelwelt* 9: 1-7.

- SIMROTH, H. (1888) - Ueber die Nahrung des Mäusebussards. *Monat. d. D. V. z. S. d. Vogelwelt* 13 Juni: 216-217.
- SIMROTH, H. (1888) - Zur Kenntniss der Azorenfauna. *Archiv. für Naturgeschichte* 54 (1) : 179-234.
- SKOVGAARD, P. (1930) - Danske Fugle 3: 8.
- SKÖGAARD, P. (1931) - Zug der Isländischen Vögel und Anschl. Bemerkungen über den Vogelzug in Europa. *Proc. 7 Int. Cong. Orn. Amsterdam*: 392-405.
- SOUTHERN, H. N. (1951) - Melanic blackcaps in the Atlantic islands. *IBIS* 93: 100-108.
- SPOLTON, L. (1945) - Ornitologia açoreana, aves de passagem vistas na Terceira entre 26 de março de 1944 e 31 de março de 1945. *AÇOREANA* 3 (4): 332-339.
- SPOLTON, L. (1947) - Notes d'ornithologie açoréenne. *ALAUDA* 15: 29-33.
- STURHAN, D. (1973) - Beitrag zur Avifauna der Azoren. *Bol. Mus. Mun. Funchal* 27: 66-73.
- SWANN, H. K. (1919) - *Synoptical list Accipitres*. London, J. WHELDON and Co. 48.
- THANNER, R. VON (1908) - Ein kleiner Beitrag zur Lebensweise von *Pyrrhula pyrrhula murina* (Godm.). *Orn. Jahrb.* 19 (3/4): 120-124.
- THOMSON, A. L. *Bird Migration* (1936) - Witherby, London: p. 74-77.
- ULSTRAND, S. (1961) - On the Vertebrate Fauna of the Azores. Report n.º 22 Lund Univ. Exp. in 1957 to the Azores and Madeira. *Bol. Mus. Mun. Funchal* 19, 49: 75-86.
- UTHEN, U. (1925) - Atlantische Vögel. *Die gefiederte Welt* 54: 4-6, 14-15, 27-28-, 38-39, 50-52, 64-66.
- VAN VALEN, L. (1965) - Morphological variation and width of ecological niches. *Am. Natur* 99: 377-390.
- VAN VEGTEN, J. A. (1968) - The Azores Bullfinch not extinct. Gull-billed Tern on São Miguel, Azores. *ARDEA* 56: 194, 196.
- VAN VEGTEN, J. A. & W. J. A. SCHIPPER (1968) - First observation of the Wren on São Miguel, Azores. *ARDEA* 56: 194-195.
- VAURIE, C. (1954) - Systematic notes on Palearctic Birds. N.º 8: Sylviinae: the Genus *Regulus*. *Am. Mus. Novit* n.º 1684: 1-9.
- VAURIE, C. (1957) - Systematic notes on Palearctic birds n.º 25: Motacillidae, The Genus *Motacilla*. *Am. Mus. Novit.* n.º 1832: 1-16.
- VAURIE, C. (1959) - *The birds of the Palearctic Fauna*, a systematic reference. I Passeriforme: p. 127. H. F. & G. WITHERBY, London.
- VOOUS, K. H. (1969) - Distributional history of Eurasian Bullfinches, Genus *Pyrrhula*. *The Condor* 51: 52-81.
- WILIAMSON (1964) - *Identification for ringers. Sylviidae*. B. T. O. N.º 3: 14.

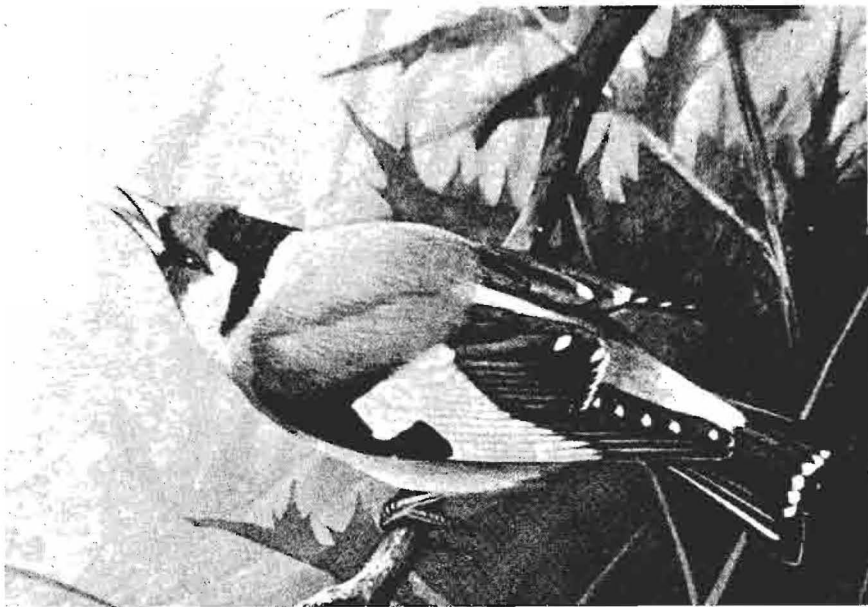


Fig. 6.—*Carduelis carduelis parva* Tschusi

INDEX OF SPECIES

ACANTHIS	A. <i>cannabina nana</i>	27 (51).
	A. <i>carduelis parva</i>	14 (125), 27 (14, 50).
ACCIPITER	A. <i>gentilis</i>	39 (138), 42 (117), 75 (251), 86 (68).
	A. <i>nisus</i>	86 (68), 92 (486).
	A. <i>nisus granti</i>	27 (51).
<i>accipitrina</i>	see ASIO	
ACTITIS	A. <i>hypoleucos</i>	24 (190), 29 (59), 39 (433), 45 (328).
	A. <i>macularia</i>	75 (80, 215).
<i>acuta</i>	see ANAS	
AEGIALITES	A. <i>cantianns</i>	6 (100, 107), 8 (32, 41).
AEGIATILIS	A. <i>alexandrinus</i>	14 (103).
	A. <i>dubia</i>	14 (103).
	A. <i>cantiana</i>	7 (91), 13 (192, 196).
	A. <i>hiaticula</i>	13 (192, 196), 14 (103).
<i>aegocephala</i>	see LIMOSA	
<i>aetherens</i>	see PHAETON	
AETHYI	A. <i>fuligula</i>	47 (336).
<i>africana</i>	see CARDUELIS <i>carduelis</i> , COTURNIX <i>coturnix</i> , FRINGILLA <i>coelebs</i> .	
<i>agneteeae</i>	see TURDUS <i>merula</i>	
AIX	A. <i>sponsa</i>	75 (80, 194, 195).
ALAUDA	A. <i>arvensis</i>	75 (236), 86 (68).
	A. <i>arvensis cantarella</i>	14 (122), 24 (48), 29 (72), 39 (435), 45 (328).
<i>alaudarius</i>	see TINNUNCULUS	
<i>alba</i>	see ARDEA, CALIDRIS, CICONIA, CROCETHIA, EGRETTEA, HERODIAS, MOTACILLA, TYTO.	
<i>alba</i>	see EGRETTEA <i>alba</i> , TYTO <i>alba</i> .	
<i>albifrons</i>	see ANSER	
<i>albifrons</i>	see ANSER <i>albifrons</i>	
ALCA	A. <i>torda</i>	13 (195, 197, 199), 14 (99), 39 (434), 45 (328), 75 (228).
<i>alcyon</i>	see CERYLE, MEGACERYLE.	
ALECTORIS	A. <i>barbara</i>	39 (312), 45 (324), 75 (101).
	A. <i>rufa</i>	39 (143, 149, 150, 312), 42 (124, 128), 53 (90, 98), 60 (116, 118), 63 (81), 64 (131), 75 (99), 85 (293, 295), 88 (66), 101.
	A. <i>rufa australis</i>	85 (293).
	A. <i>rufa hispanica</i>	27 (14, 51), 39 (312), 83 bis, 85 (280, 283, 293), 86 (68, 69), 96 (9).
	A. <i>rufa intercedens</i>	39 (312).
	A. <i>rufa rufa</i>	39 (312), 75 (101).
<i>alexandrinus</i>	see AEGIATILIS, CHARADRIUS, LEUCOPOLIUS.	
<i>alexandrinus</i>	see CHARADRIUS <i>alexandrinus</i>	
ALLE	A. <i>alle</i>	14 (100), 39 (136, 434, 439), 42 (123).
<i>alle</i>	see ALLE, MERGULUS, PLAUTUS, PLOTUS.	
<i>alleni</i>	see PORPHYRIO, PORPHYRULA.	
<i>alpina</i>	see CALIDRIS, EROLIA.	
<i>alpina</i>	see CALIDRIS <i>alpina</i>	
<i>aluco</i>	see STRIX	
<i>americana</i>	see ANAS, AYTHYA, COCCYZUS, MARECA.	

ANAS	A.	39 (136).
	A. <i>acuta</i>	66 (52), 75 (194), 84 (8, 9).
	A. <i>americana</i>	13 (193, 196), 39 (152, 431), 45 (326), 63 (85), 75 (80, 194).
	A. <i>boschas</i>	5 (128), 6 (102, 107), 7 (91), 8 (36, 41), 13 (193, 196), 14 (108).
	A. <i>clypeata</i>	75 (194).
	A. <i>crecca</i>	5 (128), 6 (102, 107), 7 (91), 8 (37, 41), 13 (193, 196), 14 (109), 39 (150, 152, 431), 45 (315, 322, 325), 64 (132), 66 (52), 75 (81, 95), 84 (8, 9), 85 (280, 283), 88 (66), 91.
	A. <i>crecca carolinense</i>	45 (315).
	A. <i>crecca crecca</i>	45 (315), 75 (192), 96 (9).
	A. <i>discors</i>	75 (80, 193).
	A. <i>ferus</i>	5 (128).
	A. <i>nigra</i>	1 (7), 4 (84), 5 (128).
	A. <i>penelope</i>	13 (193, 196), 39 (431), 45 (315, 326), 47 (320), 50 (33), 75 (193).
	A. <i>platyrhyncha</i>	39 (141, 152, 431), 42 (123), 45 (322, 325).
	A. <i>p. platyrhyncha</i>	27 (14).
	A. <i>platyrhynchos</i>	64 (126), 66 (51), 75 (94, 192), 84 (3, 8, 9), 85 (280, 282, 294), 86 (68), 88 (66).
	A. <i>querquedula</i>	75 (193).
	A. <i>rubripes</i>	83 (88).
anglorum	see PUFFINUS	
anglorum	see REGULUS <i>regulus</i>	
ANSER	A.	91.
	A. <i>albifrons albifrons</i>	75 (191).
	A. <i>anser</i>	14 (110), 39 (432), 45 (327), 75 (190).
	A. <i>arvensis</i>	83 (88).
	A. <i>brachyrhynchus</i>	75 (81, 191).
	A. <i>ferus</i>	8 (18).
anser	see ANSER	
ANTHUS	A. <i>berthelottii maderensis</i>	27 (51).
	A. <i>spinoletta</i>	53 (92).
aplaster	see MEROPS	
apricarius	see CHARADRIUS, PLUVIALIS.	
APUS	A. <i>apus</i>	14 (115), 39 (435), 88 (71), 92 (486).
	A. <i>apus apus</i>	47 (337), 50 (31), 75 (233).
	A. <i>murinus</i>	45 (324).
	A. <i>murinus brehmorum</i>	27 (51).
	A. <i>pallidus</i>	92 (485).
	A. <i>unicolor</i>	45 (319, 320), 92 (485).
	A. <i>unicolor unicolor</i>	27 (51).
apus	see APUS, MICROPUS.	
apus	see APUS <i>apus</i>	
aquaticus	see RALLUS	
AQUILA	A. <i>chrysaëtos</i>	39 (432), 45 (327), 75 (199, 246).
	A. <i>chrysaëtos</i>	14 (110).
aquila	see FREGATA, TACHYPETES	
arctica	see FRATERCULA	

- ARDEA
- A. *alba* 6 (101, 107), 7 (91), 8 (34, 41), 13 (192, 196, 199), 75 (183).
- A. *cinerea* 1 (7), 5 (70, 125), 6 (100, 107, 7 (91), 8 (33, 41), 13 (192, 196), 14 (108), 32 (38), 45 (315, 326), 56 (184), 64 (126), 65 (305), 66 (49), 67 (74, 81), 75 (181), 83 bis, 84 (3, 4, 6, 8), 85 (280, 282), 86 (68), 88 (71), 91, 98 (1), 101.
- A. *cinerea cinerea* 29 (63), 39 (430), 47 (336, 339), 50 (32).
- A. *comata* 13 (193, 196).
- A. *egretta* 8 (34, 41), 13 (192, 196), 75 (183).
- A. *garzetta* 6 (101, 107), 7 (91), 8 (34, 41), 13 (192, 196, 199), 75 (183).
- A. *gularis* 13 (193, 196, 199), 14 (107), 75 (184).
- A. *minuta* 6 (101, 107), 13 (193, 196).
- A. *nycticorax* 13 (193, 196).
- A. *purpurea* 1 (7), 4 (84), 5 (70, 125), 6 (101, 107), 7 (91), 8 (33, 41), 13 (192, 196), 14 (108), 39 (431), 45 (326), 75 (183).
- ARDEOLA
- A. *stellaris* 13 (193, 196).
- A. *ibis* 77 (451).
- A. *ralloides* 14 (107), 39 (430), 45 (315, 326), 56 (184), 60 (116), 75 (185).
- ARDETTA
- A. *minuta* 7 (91), 8 (34, 41), 14 (107).
- ARENARIA
- A. 86 (68).
- A. *interpres* 14 (102), 45 (317, 325), 53 (96), 56 (186), 64 (128), 65 (305), 66 (53), 67 (75, 81), 71 (28, 34), 75 (29), 84 (1, 5), 85 (280, 284), 88 (71), 101, 108.
- A. *interpres interpres* 24 (47), 39 (315), 47 (335, 339), 50 (32), 53 (98), 75 (207).
- arenaria* see CALIDRIS
- argentatus* see LARUS
- argentatus* see LARUS *argentatus*
- arquata* see NUMENIUS
- arquata* see NUMENIUS *arquata*
- ARQUATELLA
- A. *maritima* 13 (191, 196), 45 (325).
- arquatus* see NUMENIUS
- arvensis* see ALAUDA, ANSER.
- ASIO
- A. *accipitrina* 14 (113).
- A. *flammeus* 39 (435), 45 (325), 75 (232, 248), 91, 6 (94, 106), 7 (90), 8 (22, 41), 14 (113), 25 (9), 27 (14), 39 (144, 150, 151), 42 (124, 125), 45 (323), 63 (83), 64 (131), 75 (135, 232, 248), 85 (281), 88 (67, 70), 91, 96 (10), 101, 108, 110 (2).
- A. *otus canariensis* 39 (142), 85 (294), 96 (16).
- A. *otus otus* 14 (113), 29 (72), 39 (142, 331), 42 (130), 63 (82), 71 (24), 75 (38, 60, 135, 136), 96 (16).
- assimilis* see PUFFINUS
- ASTUR
- A. *palumbarius* 16 (6), 25 (3).
- atlantis* see LARUS

- atlantis see COLUMBA livia, LARUS argentatus, LARUS cachinnans, LARUS fuscus, SYLVIA atricapilla.
- atra see FULICA
- atra see FULICA atra
- atratus see CYGNUS
- atricapilla see SYLVIA
- atricapilla see SYLVIA atricapilla
- aurantiventris see CARDUELIS chloris, CHLORIS chloris.
- auritus see COLYMBUS, PODICEPS, TURTUR.
- australis see ALECTORIS rufa
- avosetta see RECURVIROSTRA
- AYTHYA
A. 91.
A. americana 84 (7).
A. collaris 66 (52), 75 (80, 195).
A. ferina 75 (195), 83 bis, 84 (7).
A. fuligula 50 (33), 51 (29), 75 (196), 83 bis.
A. marila 75 (195).
- azorensis see TURDUS merula
- azorica see COLUMBA palumbus
- azoricus see REGULUS cristatus, REGULUS regulus.
- bailloni see PUFFINUS obscurus
- bannermani see BUTEO buteo
- barbara see ALECTORIS
- baroll see PUFFINUS assimilis
- BARTRAMIA
E. longicauda 75 (216).
- bassana see SULA
- bella see SYLVIA conspicilata
- bernicla see BRANTA
- bernicla see BRANTA bernicla
- berthelottii see ANTHUS
- boarna see MOTACILLA
- boarula see MOTACILLA boarula
- bollii see COLUMBA
- borealis see NUMENIUS
- borealis see CALONECTRIS diomedea, PROCELLARIA diomedea, PUFFINUS diomedea, PUFFINUS kuhlii.
- boschas see ANAS
- BOTAURUS
B. lentiginosus 14 (108), 39 (152, 431) 45 (328), 75 (80, 186).
B. stellaris 6 (101, 107), 7 (91), 8 (34, 41), 14 (108), 39 (431), 45 (315, 326) 75(185). 47 (334), 50 (31).
B. stellaris stellaris see TORCAZA
- boevryi see ANSER
- brachyrhynchus see ANSER
- BRANTA
B. bernicla bernicla 29 (63), 39 (432), 45 (327), 75 (191).
B. leucopsis 14 (110), 39 (432), 45 (327), 75 (191).
see APUS marinus
- brehmorum
BUCEPHALA
BULBUCUS
BULWERIA
B. bulwerii 14 (97), 39 (430, 437), 45 (314), 64 (131), 71 (27), 75 (92, 93), 85 (279, 282), 88 (66), 96 (5), 108.
B. bulwerii bulwerii 27 (51), 75 (91).
- bulwerii see BULWERIA
- see THALASSIDROMA

- bulwerii see BULWERIA bulwerii
 BURHINUS
 BUTEO
- B. oedicephalus 39 (434), 45 (326), 75 (222).
 B. buteo 27 (51), 39 (138, 150, 151, 153, 311),
 42 (117), 45 (319, 320, 323), 53 (98),
 63 (83), 75 (251), 85 (280, 283, 293),
 88 (66, 67, 68), 91, 92 (485), 97 (7),
 101, 108.
 B. buteo bannermani 39 (142).
 B. buteo buteo 39 (312), 63 (83).
 B. buteo harterti 39 (142, 311), 85 (293), 96 (16).
 B. buteo insularum 14 (80, 111), 16 (7), 24 (48), 25 (3),
 27 (14), 39 (142), 45 (323), 85 (293),
 96 (16).
 B. buteo rothschildi 21 (48), 29 (63), 38 (572), 39 (142,
 309), 42 (124, 128), 45 (323), 60 (116),
 63 (82), 64 (126), 71 (24) 75 (38, 59,
 69), 83 bis, 85 (280, 283, 293), 86
 (67, 68), 96 (9, 16), 98 (11), 110 (2).
 B. buteo zimmermannoe 39 (142, 143).
 B. desertorum 6 (94), 8 (22).
 B. oreophilus 29 (64).
 B. vulgaris 1 (7), 2 (16), 5 (66, 71, 114), 6 (94,
 106), 7 (90), 8 (21, 22, 41), 12 (217),
 13 (189, 196).
- buteo see BUTEO, FALCO.
 buteo see BUTEO buteo
- cabreræ see TURDUS merula
 CACCABIS
- C. rufa 6 (99, 107), 7 (90), 8 (31, 41), 13
 (190, 196), 24 (44).
 C. rufus 14 (92).
- cachinnans see LARUS argentatus
 cachinnans see LARUS
 caelebis see FRINGILLA
 caeruleus see PARUS
 caesius see PORPHYRIO
 CALANDRELA
 CALIDRIS
- C. rufescens 45 (324).
 C. 86 (68).
 C. alba 75 (213), 101.
 C. alpina 47 (334), 66 (59), 75 (211), 84 (2),
 101.
 C. alpina alpina 47 (338).
 C. alpina schintzi 75 (211).
 C. arenaria 13 (191, 196), 14 (104).
 C. canutus 39 (433), 45 (325), 66 (58), 75 (210),
 84 (1), 101.
 C. canutus canutus 47 (344), 50 (32).
 C. ferruginea 66 (59), 75 (212), 85 (281, 285).
 C. fuscicollis 39 (433), 66 (58), 75 (80, 213), 84
 (1).
 C. hiaticula 84 (5).
 C. maritima 39 (433), 75 (212).
 C. mauri 83 (87).
 C. melanotos 66 (58), 75 (80, 213), 84 (6).
 C. minuta 39 (433), 66 (58), 75 (210), 84 (2),
 101.

- CALONECTRIS
- C. *minutilla* 75 (80, 211), 84 (2, 3, 5).
 C. *pusilla* 75 (80, 211), 84 (2, 3, 4, 5).
 C. *diomedea* 101, 108.
 C. *diomedea borealis* 75 (38, 51, 59, 84, 85), 85 (279, 282), 86 (68), 96 (9).
- canaria see FRINGILLA, SERINUS.
 canaria see SERINUS canaria, SERINUS serinus.
 canariensis see FRINGILLA
 canariensis see ASIO otus, COLUMBA livia, FALCO tinnunculus, MOTACILLA cinerea.
- canarius see SERINUS
 canarius see SERINUS canarius
 cannabina see ACANTHIS
 canorus see CUCULUS
 cantarella see ALAUDA arvensis
 cantiaea see STERNA
 cantiana see AEGIALITIS
 cantianus see AEGIALITIS
 canus see LARUS
 canuta see TRINGA
 canutus see CALIDRIS, TRINGA.
 canutus see CALIDRIS canutus
- CAPELLA
- C. *gallinago* 39 (152, 434), 45 (325), 53 (98).
 C. *gallinago gallinago* 47 (336), 339, 50 (33), 66 (54).
 see SYLVIA atricapilla
- capirote
- CAPRIMULGUS
- C. *europaeus* 75 (233).
 see PHALACROCORAX
- CARDUELIS
- C. *carduelis* 39 (143, 150, 161), 42 (124), 53 (90, 97), 75 (161), 85 (295), 88 (66, 70), 92 (485), 96 (10), 101, 108.
 C. *carduelis africana* 39 (427), 75 (163).
 C. *carduelis parva* 24 (49), 29 (81), 39 (426, 427, 440), 42 (132), 60 (116, 118), 63 (81), 64 (130, 135), 75 (39, 42, 60, 161, 163), 83 bis, 85 (281, 294), 95 (4), 96 (10).
 C. *carduelis tschusii* 39 (427).
 C. *chloris* 96 (10), 108.
 C. *e. aurantiiventris* 60 (116, 118, 119) 63 (81).
 see ACANTHIS, CARDUELIS, FRINGILLA.
- carduelis
- CARINA
- carolinense see ANAS crecca
 caspius see PODICEPS
 cassini see PYRRHULA pyrrhula
 castro see OCEANODROMA
 castro see OCEANODROMA castro
- CATHARACTA
- CERCHNEIS
- CERCUNEIS
- CERYLE
- CHARADRIUS
- C. *skua* 75 (223, 247).
 C. *tinnunculus* 14 (112).
 C. *t. tinnunculus* 29 (64).
 C. *alcyon* 14 (114), 39 (435), 45 (328), 86 (68).
 C. *alexandrinus* 39 (149, 151, 314), 42 (129), 45 (326), 50 (33), 51 (30), 52 (182), 56 (186), 60 (116, 118), 63 (83), 64 (128), 71 (28, 34), 75 (6, 13, 59, 111, 112, 208), 85 (280, 284, 293), 88(66, 69), 108.

- C. *a. alexandrinus* 27 (51), 29 (67), 39 (314), 63 (82),
 75 (38, 205), 95 (2, 3), 96 (9).
 C. *alexandrinus spatzi* 39 (314).
 C. *apricarius* 39 (433), 45 (326).
 C. *dubius curonicus* 39 (433), 45 (326), 75 (205).
 C. *hiaticula* 39 (433), 45 (326), 64 (128), 66(53),
 75 (205), 84 (4).
 C. *pluvialis* 14 (103).
 C. *vociferus* 39 (152, 433), 45 (328), 51 (30), 75
 (80, 206).
 CHELIDON C. *urbica* 14 (120).
 CHEN C. *hyperborea* 75 (192), 77 (451).
 C. *hyperborens* 83 (88).
 CHLIDONIAS C. 45 (317).
 C. *niger* 51 (29).
 C. *niger niger* 47 (334), 50 (32).
 CHLORIS C. *chloris* 39 (143, 150, 151), 42 (124), 53 (90),
 75 (163), 85 (281), 88 (66, 67).
 C. *c. aurantiiventris* 14 (127), 27 (14), 29 (61), 39 (428,
 429), 42 (132), 64 (130), 75 (39, 60,
 163), 85 (289, 294), 95 (3).
 C. *chloris chloris* 39 (428, 429).
 see CARDUELIS, CHLORIS.
 chloris see CHLORIS *chloris*
 chloropus see GALLINULA
 chloropus see GALLINULA *chloropus*
 CHORDEILES C. *minor* 75 (451), 83 (88).
 chrysaëtos see AQUILA
 chrysaëtus see AQUILA
 CICONIA C. *alba* 13 (193, 196).
 C. *cleonia* 14 (108), 39 (431), 45 (327), 75 (188).
 ciconia see CICONIA
 cineracea see PYRRHULA
 cinerea see ARDEA, MOTACILLA, PROCELLARIA.
 cinerea see MOTACILLA *cinerea*
 cinereus see PUFFINUS
 CLANULA C. *clangula* 14 (109).
 C. *hyemalis* 39 (431), 45 (325), 47 (334), 50 (31),
 75 (197), 77 (451).
 clangula see BUCEPHALA, CLANGULA, FULIX.
 clypeata see ANAS, SPATULA.
 coccinea see PYRRHULA.
 cocchina see PYRRHULA *pyrrhula*
 COCCYZUS C. *erythrophthalmus* 14 (114), 39 (435), 45 (328), 75 (80,
 230).
 C. *americanus* 39 (439), 45 (328), 56 (186), 75 (80,
 230).
 coelebs see FRINGILLA
 coelebs see FRINGILLA *coelebs*
 colchicus see PHASIANUS
 COLEUS C. *monedula* 86 (68).
 COLINUS C. *virginianus* 65 (305), 67 (73, 80), 85 (281), 96
 (9).
 collaris see AYTHYA
 COLLOCALIA C. *fuciphaga* 14 (115), 39 (435), 45 (328), 75 (80,
 234).
 collybita see PHYLLOSCOPUS

COLUMBA	<i>C. bollii</i>	39 (140).
	<i>C. domestica</i>	5 (121).
	<i>C. junoniae</i>	39 (140).
	<i>C. laurivora</i>	6 (99), 14 (94).
	<i>C. livia</i>	4 (84), 5 (120), 6 (99, 107), 7(90), 8 (31, 41), 11 (6), 13 (190, 196), 14 (94), 24 (45), 26 (57), 27 (14), 29 (69), 39 (139, 149, 150, 151, 153), 42 (117), 45 (323), 53 (98), 60 (116), 64 (129), 70 (90), 75 (131, 132), 85 (293), 88 (67, 70, 71), 92 (485), 93 (340), 96 (10, 16), 98 (1), 100 (2), 101, 107 (45), 108.
	<i>C. livia atlantis</i>	35 (117), 39 (329), 71 (29), 75 (38, 59, 132), 83 bis, 85 (281, 285, 294), 86 (68).
	<i>C. livia canariensis</i>	85 (294).
	<i>C. livia domestica</i>	8 (18).
	<i>C. livia livia</i>	27 (51), 35 (117), 39 (141, 329), 42 (130), 63 (82, 83, 84), 75 (132), 96 (16).
	<i>C. palumbus</i>	6 (99, 107), 7 (90), 8 (30, 41), 39 (149, 150, 152), 45 (323), 53 (98), 63 (83), 75 (128), 84 (4, 7), 88 (67, 70), 92 (484, 485), 96 (16), 101, 107 (45), 108.
	<i>C. palumbus azorica</i>	14 (80, 93), 24 (44), 25 (9), 27 (14), 29 (70), 39 (141, 327, 439), 42 (130), 63 (82), 64 (129), 71 (25, 30, 34), 75 (38, 44, 59, 79, 128), 83 bis, 85 (281, 285), 86 (68), 90, 96 (10, 16, 22), 110 (4).
	<i>C. palumbus maderensis</i>	27 (51), 39 (141, 327), 75 (128), 85 (294), 96 (16).
	<i>C. trocaz</i>	1 (7), 4 (84), 5 (70, 71, 122), 6 (99), 14 (80, 82, 94), 27 (51), 39 (140), 75 (128).
	<i>C. turricola</i>	1 (7), 5 (69, 71, 121).
	<i>C. turtur</i>	1 (7), 4 (84), 5 (123).
columbianus	see OLOR	
COLYMBUS	<i>C.</i>	4 (84).
	<i>C. auritus</i>	14 (96).
	<i>C. glacialis</i>	5 (127), 13 (195, 197, 199).
	<i>C. immer</i>	39 (429), 45 (324), 50 (31).
	<i>C. immer immer</i>	47 (335).
	<i>C. nigricolis</i>	14 (96).
comata	see ARDEA	
COMATIBIS	<i>C. eremita</i>	39 (431), 45 (328), 75 (80).
	<i>C. eremitis</i>	14 (107).
communis	see COTURNIX	
confisa	see COTURNIX	
confisa	see COTURNIX coturnix	
conspicillata	see SYLVIA	
conturbans	see COTURNIX	
conturbans	see COTURNIX coturnix	

- CORACIAS**
corax
corone
 correiana
CORVUS
- C. garrulus garrulus** 75 (235).
 see **CORVUS**
 see **CORVUS**
 see **GALLINULA chloropus**
C. 45 (318).
C. corax 5 (119), 13 (189, 195), 45 (318), 86 (68).
C. corone 14 (128), 39 (436), 45 (326), 75 (238), 86 (68).
C. frugilegus 14 (128), 39 (436), 45 (326), 75 (238), 86 (68).
C. monedula 75 (238).
 see **PERDIX**
C. confisa 85 (293).
C. conturbans 85 (293).
C. communis 6 (99, 107), 7 (90), 8 (32, 41), 13 (190, 196), 26 (57).
C. coturnix 20, 39 (149, 150, 151, 153), 45 (323), 63 (83, 84), 75 (102), 85 (280, 283, 284), 88 (66, 68), 91, 92 (485), 101, 108.
C. coturnix africana 14 (92, 93), 20, 29 (64), 39 (142, 313), 45 (323), 75 (102, 200), 86 (67).
C. coturnix confisa 20, 27 (51), 39 (141, 142, 313), 75 (102), 86 (67), 96 (16).
C. coturnix conturbans 20, 24 (44), 27 (14), 29 (64), 39 (141, 142, 313, 437), 42 (124, 128), 45 (315), 60 (116), 63 (82), 64 (127), 71 (24), 75 (38, 59, 79, 102, 104, 200), 83 bis, 86 (67, 68), 95 (4), 96 (9, 16), 99, 14 (93), 20, 39 (313), 75 (103, 104), 200).
C. coturnix inopinata 20, 39 (313).
 see **COTURNIX, PERDIX.**
 see **COTURNIX coturnix**
 see **ANAS, NETTION.**
 see **ANAS crecca, NETTION crecca.**
 see **OEDICNEMUS**
- coturnix**
 coturnix
crecca
 crecca
 crepitans
CREX
- C. crex** 14 (95), 29 (65), 39 (432), 45 (326), 56 (185), 75 (203).
C. pratensis 6 (102, 107), 7 (91), 8 (36, 41), 13 (192, 196).
- crex**
cristatus
CROCETHIA
- see **CREX**
 see **PAVO, PODICEPS, REGULUS, VANELLUS.**
C. alba 29 (67), 39 (433), 45 (325), 47 (335, 338), 50 (32), 66 (59), 75 (13).
- CUCULUS**
- C. canorus** 13 (184, 195), 14 (114), 39 (435), 45 (326), 77 (229).
- curroneus**
CURRUCA
CYGNUS
- see **CHARADRIUS dubius**
C. heinekeni 6 (96), 8 (24).
C. atratus 5 (128), 8 (18), 65 (306), 67 (78, 82), 71 (27), 75 (189).
- delawarensis**
 see **LARUS**

DELICHON	D. urbica	39 (435), 45 (326), 75 (237), 88 (71), 92 (486).
DENDROCOPUS	D.	14 bis (123).
	D. major	13 (184, 195).
	D. minor	13 (184, 195), 25 (6).
DEMIGRETTA	D. gularis	45 (328), 75 (80).
desertorum	see BUTEO	
diomedea	see CALONECTRIS, PROCELLARIA, PUFFINUS.	
diomedea	see PROCELLARIA diomedea	
discors	see ANAS	
disputans	see PROCELLARIA diomedea	
domestica	see COLUMBA, HIRUNDO.	
domestica	see COLUMBA livia	
domesticus	see GALLUS, PASSER.	
domesticus	see PASSER domesticus	
dougallii	see STERNA	
dougallii	see STERNA dougallii	
DRYOBATES	D. major	75 (249, 252).
	D. minor	6 (98, 107), 7 (90), 8 (30, 41), 14 (84, 114), 39 (140, 145, 435), 42 (118), 75 (235, 248, 249, 250), 86 (68).
dubia	see AEGIATILIS	
dubius	see CHARADRIUS	
edwardsi	see PROCELLARIA diomedea , PUFFINUS kuhlii	
EGRETTA	E. alba	52 (182), 75 (183).
	E. alba alba	39 (430), 45 (327), 52 (182), 75 (183).
	E. alba egretta	39 (430), 45 (328), 75 (80, 183).
	E. egretta	75 (9).
	E. garzetta	45 (327), 65 (305), 66 (51), 67 (76, 81), 75 (183), 88 (71), 108.
	E. garzetta garzetta	39 (430).
	E. gularis	39 (430), 75 (184).
	E. intermedia	39 (430), 45 (328), 75 (251).
egretta	see ARDEA, EGRETTA, HERODIAS	
egretta	see EGRETTA alba	
eleonorae	see FALCO	
epops	see UPUPA	
epops	see UPUPA epops	
eremita	see COMATIBIS, GERONTICUS.	
eremitis	see COMATIBIS	
ernesti	see TYTO	
EROLIA	E. alpina	50 (32), 51 (29).
	E. fusceollis	45 (328).
	E. maritima <i>maritima</i>	24 (47).
	E. minuta	45 (328).
	E. testacea	45 (317, 328).
ERYTHACUS	E. rubecula	5 (120), 6 (95, 106), 7 (90), 8 (23, 41), 13 (187, 195), 14 (80, 117), 26 (57), 39 (144, 150, 151, 154), 42 (125), 45 (323), 53 (96), 60 (116, 118), 63 (83), 64 (129), 71 (23), 75 (60, 141), 83 bis, 85 (281, 286), 88 (66, 67, 71), 91, 92 (485), 96 (10, 14), 97 (6), 100 (2), 101, 108.

- E. rubecula melophilus* 14 (117).
E. rubecula microrhynchus 96 (16).
E. rubecula rubecula 14 (117), 24 (48), 27(14, 51), 29 (75),
 39 (142, 334, 335), 42 (130), 63 (82),
 75 (38, 142), 95 (2, 3), 96 (16).

E. rubecula superbus 14 (117), 75 (142).
erythrophthalmus see COCCYZUS
erythropus see TOTANUS, TRINGA.
EUDROMIAS *E. morinellus* 83 (88).
europaea see PYRRHULA
europaea see PYRRHULA *pyrrhula*
europaeus see CAPRIMULGUS
exilis see IXOBRYCHUS

falcinellus see PLEGADIS
FALCO
F. buteo 86 (68).
F. eleonora 4 (83).
F. eleonora 45 (324).
F. naumanni naumanni 75 (199).
F. peregrinus 14 (112), 39 (432), 45 (327), 75 (199,
 246).

F. sparteverius 77 (451), 83 (88).
F. tinnunculus 5 (67), 39 (437), 45 (326), 66 (52),
 92 (486).

F. tinnunculus canariensis 27 (51).
F. tinnunculus tinnunculus 39 (432), 47 (337), 50 (31), 75 (198)
 see PTERODROMA *mollis*
feae see AYTHYA, FULIGULA, FULIX, NYROCA.
ferina see CALIDRIS
ferraginea see ANAS, ANSER
ferus see STRIX
flammea see ASIO
flammeus see MOTACILLA
flava see TOTANUS, TRINGA.
flavipes see PROCELLARIA *diomedea*, PUFFINUS *kuhli*
flavirostris see STERNA
fluvialis
FRATERCULA *F. arctica* 14 (100), 39 (136, 327), 42 (123), 45
 (317, 325), 56 (185), 75 (5, 229).

FREGATA *F. aquila* 45 (314).
F. aquila 14 (110), 39 (430), 45 (314).
F. magnificens 45 (314), 75 (80, 181).
F. minor 45 (314).

FRINGILLA *F.* 3(409).
F. caelebis 7 (92)
F. canaria 5 (68, 117), 8 (18, 28).
F. canariensis 1 (7), 3 (411), 4 (52), 5 (68, 71, 117,
 118), 7 (92), 8 (28), 26 (57).

F. canariensis moreletti 7 (117).
F. carduells 13 (186, 195).

F. coelebs 3 (412), 6 (97), 39 (150, 151, 152,
 153), 45 (323), 53 (91, 94, 97, 98),
 55 (458, 471), 63 (83), 73, 75 (157,
 160), 85 (294), 88 (67, 70), 91, 92
 (485), 96 (14, 16), 97 (5), 100 (2),
 101, 105, 108.

	<i>F. coelebs africana</i>	39 (419).
	<i>F. coelebs coelebs</i>	39 (416, 419), 75 (160), 105.
	<i>F. coelebs maderensis</i>	14 (122, 123), 27 (50), 29 (78), 39 (142, 419), 85 (294), 96 (16), 105.
	<i>F. coelebs moreletti</i>	14 (80, 122), 24 (49), 25 (9), 27 (14), 29 (78), 39 (142, 417, 419, 424, 440), 42 (131), 60 (116), 63 (82), 64 (131), 71 (23), 75 (39, 59, 157, 159), 79, 83 bis, 84 (7), 85 (281, 290), 86 (68), 95 (2, 3), 96 (10, 16), 105.
	<i>F. coelebs ombriosa</i>	85 (294), 105.
	<i>F. coelebs palmae</i>	85 (294), 105.
	<i>F. coelebs spodiogenys</i>	39 (419).
	<i>F. coelebs tintillon</i>	85 (294).
	<i>F. moreletti</i>	3 (412), 4 (84), 5 (118), 6 (97, 105, 107, 108), 7 (90, 92), 8 (26, 27, 28), 9 (279), 14 bis, 26 (57).
	<i>F. petronia</i>	5 (119).
	<i>F. polatzeki</i>	18 (119).
	<i>F. serinus</i>	1 (7), 4 (52, 84), 5 (68, 71, 116, 117)
	<i>F. spodiogena</i>	6 (97), 7 (92).
	<i>F. spodiogenys</i>	3 (412).
	<i>F. teydea</i>	3 (411, 412), 7 (92), 39 (140), 53 (94), 75 (157).
	<i>F. tintillon</i>	3 (411), 5 (118), 6 (97, 108), 7 (92), 8 (19, 26, 27, 28, 41), 9 (279), 11 (5), 13 (186, 195, 199, 201), 26 (57).
frugillogus	see CORVUS	
fulciphaga	see COLLOCALIA	
FULICA	<i>F. atra</i>	6 (102, 107), 7 (91), 8 (36, 41), 13 (192, 196), 14 (95), 39 (136, 141, 149, 150, 432), 42 (123), 45 (322), 56 (186), 60 (116, 119), 63 (82, 83), 64 (128), 65 (305), 66 (53), 67 (77, 81), 75 (59, 108), 83 bis, 84 (4), 85 (280, 284, 294), 86 (68), 88 (67), 96 (9), 108.
	<i>F. atra atra</i>	27 (14), 29 (66), 38 (573), 39 (438), 42 (128), 45 (317), 75 (38, 201), 96 (9).
fulcarius	see PHALAROPUS	
fuliginosa	see STERNA	
fuliginosus	see PUFFINUS	
FULIGULA	<i>F. ferina</i>	14 (109).
fuligula	see AETHYI, AYTHYA.	
FULIX	<i>F. clangula</i>	13 (193, 196, 199).
	<i>F. ferina</i>	13 (193, 196).
fuscata	see STERNA	
fuscata	see STERNA fuscata	
fuscicollis	see CALIDRIS, EROLIA, TRINGA.	
fuscus	see LARUS, TOTANUS.	
fuscus	see LARUS fuscus	
galbula	see ORIOLUS	
galeata	see NUMIDA	
GALLINAGO	G.	108.

- G. gallinago* 14 (105), 75 (39, 117, 209), 85 (280, 284, 294), 88 (67, 69, 72), 91, 96 (10), 97 (8), 101, 107 (45), 110 (6).
- G. media* 6 (101, 107), 7 (91), 8 (35, 41), 13 (191, 196), 75 (117).
- gallinago** see CAPELLA, GALLINAGO, SCOLOPAX.
gallinago see CAPELLA *gallinago*
GALLINULA *G. chloropus* 1 (7), 5 (70, 125), 6 (102, 107), 7 (91), 8 (36, 41), 13 (192, 196), 14 (96), 39 (136, 149, 150, 152), 45 (317, 322), 60 (119), 63 (83), 75 (105), 84 (9), 85 (280, 283, 284), 88 (66, 68), 91, 96 (9), 108.
- G. chloropus chloropus* 29 (65), 75 (105, 106, 107, 201), 88 (68).
- G. chloropus correlana* 29 (65), 38 (572), 39 (141, 313), 42 (123, 128), 63 (82), 64 (128), 65 (305), 67 (77, 81), 75 (38, 39, 59, 74, 105, 106), 85 (294), 86 (66), 88 (68), 95 (3), 96 (9).
- gallopavo** see MELEAGRIS
GALLUS *G. domesticus* 5 (124), 8 (18).
garrulus see CORACIAS
garrulus see CORACIAS *garrulus*
GARZETTA *G. garzetta* 14 (107).
garzetta see ARDEA, EGRETТА, GARZETTA.
garzetta see EGRETТА *garzetta*
GAVIA *G. imber* 14 (96).
G. immer 24 (190), 75 (175), 103 (3).
G. stellata 103 (1).
G. nilotica 77 (452), 80 (196), 83(88).
- GELOCHELIDON** *gentilis* see ACCIPITER
GERONTICUS *G. eremita* 75 (188).
glacialis see COLYMBUS, HARELDA.
glareola see TRINGA
glaucoides see LARUS
godmani see PUFFINUS *assimilis*
graellsii see LARUS *fuscus*
granti see ACCIPITER *nisus*, STURNUS *vulgaris*.
gravis see PROCELLARIA, PUFFINUS.
griselgena see PODICEPS
griseiventris see PYRRHULA
griseus see LIMNODROMUS, MACRORHAMPHUS, PUFFINUS.
GRUS *G. grus* 75 (200).
grus see GRUS
gularis see ARDEA, DEMIGRETТА, EGRETТА.
guttata see TYTO *alba*
- HAEMATOPUS** *H. meade-waldoi* 45 (320).
H. ostralegus 75 (203).
haliaetus see PANDION
haliaetus see PANDION *haliaetus*
HARELDA *H. glacialis* 13 (193, 196, 199), 14 (109).
harteti see BUTEO *buteo*
hasitata see PROCELLARIA
helnekeni see CURRUCA, SYLVIA.

heineken	see SYLVIA atricapilla	
HERODIAS	H. alba	14 (107).
	H. egretta	14 (107).
hiaticula	see AEGIATILIS, CALIDRIS, CHARADRIUS.	
HIMANTOPUS	H. himantopus himantopus	75 (220).
himantopus	see HIMANTOPUS	
himantopus	see HIMANTOPUS himantopus	
HIPPOLAIS	H. icterina	53 (93).
HIRUNDO	H. domestica	5 (69).
	H. rustica	5 (120), 13 (186, 195), 14 (120), 39 (435), 45 (326), 51 (30), 75 (236), 92 (485).
	H. rustica rustica	47 (334, 338), 50 (31).
hirundo	see STERNA	
hirundo	see STERNA hirundo	
hispanica	see ALECTORIS rufa	
hispaniolensis	see PASSER	
hortulanus	see SERINUS	
hudsonicus	see NUMENIUS phaeopus	
HYDROBATES	H. pelagicus	58 (147), 64 (125), 85 (279), 86 (68), 96 (19).
HYDROCHLIDON	H. nigra	47 (334).
HYDROCOLOEUS	H. ridibundus ridibundus	29 (68).
hyemalis	see CLANGULA	
HYLOCICHLA	H. mustelina	75 (80, 240).
hyperborea	see CHEN	
hyperborea	see CHEN, LARUS, PHALAROPUS.	
hypoleuca	see PELAGODROMA marina	
hypoleucas	see ACTITIS, TRINGA.	
ibis	see ARDEOLA, BULBUCUS.	
icterina	see HIPPOLAIS	
ictinus	see MILVUS	
ignicapillus	see REGULUS	
iliacus	see TURDUS	
imber	see GAVIA	
immer	see COLYMBUS, GAVIA.	
immer	see COLYMBUS immer	
inermis	see REGULUS regulus	
inopinata	see COTURNIX coturnix	
insularum	see BUTEO buteo	
intercedens	see ALECTORIS rufa	
intermedia	see EGRETta, MESOPHOYX, PORZANA.	
intermedia	see PORZANA pusilla	
interpres	see ARENARIA, STREPSILAS.	
interpres	see ARENARIA interpres	
IXOBRYCHUS	I. exilis	75 (80, 187).
	I. minutus	39 (430), 45 (315, 326), 66 (51), 103 (6).
	I. minutus minutus	75 (186).
	I. minutus payesi	83 (87).
junoniae	see COLUMBA	
kuhlii	see PUFFINUS	
kuhlii	see PUFFINUS kuhlii	

- kurlensis** see PYRRHULA
- laponica** see LIMOSA
- LARUS**
- L. **argentatus** 86 (68).
1 (7), 4 (84), 5 (70, 71, 126), 6 (103, 107), 7 (91), 8 (39, 42), 13 (194, 197), 39 (321, 322), 53 (98), 45 (327), 64 (129), 75 (118, 119), 83 bis, 88 (66, 69), 101.
- L. **argentatus argentatus** 39 (321, 322), 47 (337), 75 (223).
- L. **argentatus atlantis** 64 (128), 75 (6, 38, 118), 83 bis, 85 (280), 95 (2, 3), 96 (10, 16), 98.
- L. **argentatus cachinnans** 14 (101), 27 (14, 51), 39 (318, 319).
- L. **argentatus michalellesii** 39 (318, 319).
- L. **atlantis** 39 (146).
- L. **cachinnans** 14 (102), 39 (320), 75 (118, 223), 108.
- L. **cachinnans atlantis** 39 (142, 149, 151, 152, 317, 318, 319, 320, 322, 439).
- L. **cachinnans michahellsii** 39 (321).
- L. **canus** 77 (452), 83 (88).
- L. **delawarensis** 49 (170).
- L. **fuscus** 13 (194, 197), 14 (102), 39 (319, 320, 321), 66 (60), 75 (118, 119, 223).
- L. **fuscus atlantis** 23 (1, 2), 24 (46), 27 (14), 29 (68), 42 (129), 60 (116), 75 (59).
- L. **fuscus fuscus** 39 (321, 322).
- L. **fuscus graellsii** 39 (319, 321).
- L. **glaucooides** 75 (248).
- L. **hyperboreus** 24 (47), 29 (59), 39 (434), 45 (325), 75 (224).
- L. **marinus** 13 (194, 197), 14 (102), 24 (47), 39 (434), 45 (325), 53 (98), 66 (59), 75 (223).
- L. **minutus** 75 (247).
- L. **ridibundus** 13 (194, 197), 14 (102), 24 (190), 28 (374), 31 (8), 40 (36), 45 (326), 60 (116), 75 (81, 224), 83 bis, 88 (71), 108.
- L. **ridibundus ridibundus** 39 (323), 42 (129), 45 (317), 47 (334, 338), 50 (31).
- L. **tridactylus** 1 (7), 4 (84), 5 (126).
- laurlvora** see COLUMBA, TROCAZA.
- lentiginosus** see BOTAURUS
- leucogaster** see SULA
- LEUCOPOLIUS** L. **alexandrinus** 53 (93, 98).
- leucopsis** see BRANTA
- leucorodia** see PLATALEA
- leucorodia** see PLATALEA **leucorodia**
- leucorrhoea** see OCEANODROMA
- leucorrhoea** see OCEANODROMA **leucorrhoea**, OENANTHE **oenanthe**, SAXICO-LA **oenanthe**.
- LIMNODROMUS** L. **griseus** 66 (57), 75 (246), 84 (1).
- LIMOSA** L. 86 (68).
- L. **aegocephala** 13 (191, 196).

	L. <i>lapponica</i>	14 (104), 39 (434), 45 (317, 326), 75 (217), 84 (5), 101.
	L. <i>limosa</i>	14 (104), 39 (434), 45 (326), 66 (56), 75 (216), 84 (3, 6), 103 (4).
	L. <i>limosa limosa</i>	29 (67), 47 (335, 338), 50 (32).
<i>limosa</i>	see LIMOSA	
<i>limosa</i>	see LIMOSA <i>limosa</i>	
<i>littoreus</i>	see TOTANUS	
<i>livia</i>	see COLUMBA	
<i>livia</i>	see COLUMBA <i>livia</i>	
<i>lobatus</i>	see PHALAROPUS	
<i>lomvia</i>	see URIA	
<i>lomvia</i>	see URIA <i>lomvia</i>	
<i>longicauda</i>	see BARTRAMIA	
<i>longicaudus</i>	see STERCORARIUS	
LYMNOCRYPTES	L. <i>minimus</i>	66 (55), 75 (210).
MACRORHAMPHUS	M. <i>griseus</i>	13 (191, 196).
<i>macrura</i>	see STERNA	
<i>macularia</i>	see ACTITIS, TRINGA.	
<i>madeirensis</i>	see REGULUS	
<i>madeirensis</i>	see ANTHUS <i>berthelottii</i> , COLUMBA <i>palumbus</i> , FRINGILLA <i>coelebs</i> , PETRONIA <i>petronia</i> , REGULUS <i>ignicapillus</i> .	
<i>major</i>	see DENDROCOPUS, DRYOBATES, PICUS, PUFFINUS.	
<i>magnificens</i>	see FREGATA	
<i>magnus</i>	see THALASSIDROMA	
MARECA	M. <i>americana</i>	14 (109), 16 (11).
	M. <i>penelope</i>	14 (109), 16 (11).
<i>marila</i>	see AYTHYA	
<i>marina</i>	see PELAGODROMA	
<i>marinus</i>	see LARUS	
<i>maritima</i>	see ARQUATELLA, CALIDRIS, EROLIA, TRINGA.	
<i>maritima</i>	see EROLIA <i>maritima</i>	
<i>martinica</i>	see PORPHYRULA	
<i>mauretanicus</i>	see PROCELLARIA <i>puffinus</i> , TURDUS <i>merula</i>	
<i>mauri</i>	see CALIDRIS	
<i>meade-waldoi</i>	see HAEMATOPUS	
<i>media</i>	see GALLINAGO	
MEGACERYLE	M. <i>alcyon</i>	75 (234).
MELANITTA	M. <i>nigra</i>	34 (398), 75 (81, 197).
<i>melanocephala</i>	see SYLVIA	
<i>melanoleuca</i>	see TRINGA	
<i>melanotos</i>	see CALIDRIS	
MELEAGRIS	M. <i>gallopavo</i>	5 (124), 8 (18), 86 (68).
<i>meleagris</i>	see NUMIDA	
<i>melophilus</i>	see ERYTHACUS <i>rubecula</i>	
MERGULUS	M. <i>alle</i>	6 (102, 107), 7 (91), 8 (42, 71), 13 (195, 197, 199).
MERGUS	M. <i>serrator</i>	13 (194, 196), 14 (110), 39 (432), 45 (325), 56 (185), 75 (197).
MEROPS	M. <i>apiaster</i>	14 (114), 39 (435), 45 (326), 75 (234).
<i>merula</i>	see TURDUS	
<i>merula</i>	see TURDUS <i>merula</i>	
MESOPHOYX	M. <i>intermedia</i>	14 (108), 75 (184, 251).

- michahellsii see LARUS argentatus, LARUS cachinnans.
 MICROPUS M. apus 45 (326).
 microrhynchus see ERYTHACUS rubecula
 MILVUS M. iclinus 8 (22).
 minimus see LYMNOCRYPTES
 minor see CHORDEILES, DENDROCOPUS, DRYOBATES, FREGATA,
 PICUS.
 minuta see ARDEA, ARDETTA, CALIDRIS, EROLIA, TRINGA.
 minutilla see CALIDRIS
 minutus see IXOBRYCHUS, LARUS.
 minutus see IXOBRYCHUS minutus
 mollis see PTERODROMA
 mollissima see SOMATERIA
 monedula see COLEUS, CORVUS.
 moreletti see FRINGILLA
 moreletti see FRINGILLA coelebs
 morinellus see EUDROMIAS
 moschata see CARINA
 MOTACILLA M. 75 (8).
 M. alba 14 (122), 26 (57, 58), 45 (318), 53
 (92), 75 (242), 83 ter, 96 (13).
 M. boarula 1 (7), 4 (84), 5 (69, 71, 120), 25 (8).
 M. boarula boarula 14 (120).
 M. boarula schmitzi 14 (80, 120), 27 (14, 51).
 M. cinerea 39 (150, 151, 152, 153, 154), 45 (323),
 53 (91, 92, 98), 59 (8, 10, 11), 63
 (83), 73, 75 (150), 85 (294), 88 (67,
 70, 72), 91, 92 (485), 96 (13, 16), 97
 (5), 100 (1), 101, 108.
 M. cinerea canariensis 59 (12, 13, 14, 15).
 M. cinerea cinerea 39 (344, 345), 75 (152).
 M. cinerea patricae 59 (12, 13, 14, 15) 63 (82), 71 (23),
 75 (6, 38, 59), 83 bis, 85 (281, 288,
 294), 86 (68), 96 (10).
 M. cinerea schmitzi 24 (48), 29 (72), 39 (142, 343, 344,
 345), 42 (131), 59 (12, 13, 14, 15), 60
 (116), 64 (130, 135), 85 (294) 96 (16).
 M. flava 96 (13).
 M. rubecula 4 (52, 84).
 M. sulphurea 6 (96, 106), 7(90), 8 (25, 41), 13
 (186, 195), 26 (57).
 murina see PYRRHULA
 murina see PYRRHULA pyrrhula
 murinus see APUS
 mustelina see HYLOCICHLA
 mustelinus see TURDUS
 nana see ACANTHIS cannabina
 naumanni see FALCO
 naumanni see FALCO naumanni
 nebularia see TRINGA
 nebularius see TOTANUS
 NEOPHRON N. percnopterus 45 (315, 327), 75 (198).
 NETTION N. crecca crecca 24 (48).
 niger see CHLIDONIAS

niger	see	CHLIDONIAS niger	
nigra	see	ANAS, HYDROCHLIDON, MELANITTA, OIDEMIA.	
nigricollis	see	COLYMBUS, PODICEPS.	
nigricollis	see	PODICEPS nigricollis	
nilotica	see	GELOCHELIDON	
nlsus	see	ACCIPITER	
nivalis	see	PASSERINA, PLECTROPHANES, PLECTROPHENAX	
nivalis	see	PLECTROPHENAX nivalis	
NUMENIUS	N.		86 (68).
	N. arquata		6 (101, 107), 7 (91), 14 (104), 39 (433), 45 (326), 56 (185), 66 (55), 75 (218), 101.
	N. arquata arquata		47 (335), 50 (32).
	N. arquatus		8 (34, 41), 13 (191, 196).
	N. borealis		75 (219).
	N. phaeopus		6 (101, 107), 7 (91), 8 (34, 41), 13 (191, 196), 45 (317, 326), 53 (98), 66 (55), 84 (1, 5), 85 (280, 285), 101.
	N. phaeopus hudsonicus		75 (219).
	N. phaeopus phaeopus		75 (218).
	N. phaeopus		14 (104), 39 (434), 56 (185), 67 (76, 81).
	N. tenuirostris		75 (219).
NUMIDA	N. galeata		86 (68).
	N. meleagris		5 (124), 8 (18).
NYCTEA	N. nyctea		29 (61, 71), 75 (74).
	N. scandiaca		39 (435), 45 (327), 75 (232).
nyctea	see	NYCTEA	
NYCTICORAX	N. nycticorax		14 (108), 39 (431), 45 (315, 325), 75 (185).
nycticorax	see	ARDEA, NYCTICORAX	
NYROCA	N. ferina		39 (431), 45 (325).
obscura	see	SYLVIA atricapilla	
obscurus	see	PUFFINUS	
oceanicus	see	OEANITES	
OCEANITES	O. oceanicus		14 (97), 39 (430), 45 (327), 75 (117), 29 (60).
OCEANODROMA	O. castro		14 (96), 27 (14, 51), 39 (148, 149, 150), 45 (314), 64 (125), 71 (29), 75 (178), 85 (279), 88 (66), 101, 108.
	O. castro castro		39 (142, 308), 42 (128), 75 (83), 96 (9, 16).
	O. leucorrhoea		14 (97), 27 (14), 39 (148, 429), 45 (327), 75 (84, 178), 83 bis, 85 (279).
	O. leucorrhoea leucorrhoea		75 (178).
ochropus	see	TRINGA	
OEDICNEMUS	O. oedienemus		14 (107).
	O. crepitans		13 (191, 196).
oedienemus	see	BURHINUS, OEDICNEMUS.	
OENANTHE	O. oenanthe		39 (141, 152), 45 (322), 66 (60), 75 (60), 96 (10), 108.

- O. oenanthe leucorrhoea* 39 (436), 45 (318, 325), 71 (32), 75 (240, 241).
O. oenanthe oenanthe 45 (325), 71 (32).
O. oenanthe schioleri 45 (318, 325).
 see OENANTHE, SAXICOLA.
 see OENANTHE *oenanthe*, SAXICOLA *oenanthe*
OIDEMIA
O. nigra 6 (102, 107), 7 (91), 8 (37, 41), 13 (193, 196, 199), 14 (109), 39 (432), 45 (325), 75 (190).
OLOR
olor
O. columbianus
 see CYGNUS
ombriosa
 see FRINGILLA *coelebs*
oreophilus
 see BUTEO
ORIOIUS
O. galbula 6 (95, 106), 7 (90), 8 (28, 41), 13 (188, 195).
O. oriolus 14 (127), 39 (436), 42 (123), 45 (326), 75 (237).
O. oriolus oriolus 27 (50).
 see ORIOIUS
oriolus
 see ORIOIUS *oriolus*
ostralegus
 see HAEMATOPUS
OTUS
O. vulgaris 13 (189, 195).
otus
 see ASIO
otus
 see ASIO *otus*
OXYECHUS
O. vociferus vociferus 29 (67), 47 (336), 50 (33).
pallidus
 see APUS
palmae
 see FRINGILLA *coelebs*
palumbarius
 see ASTUR
PALUMBUS
P. torquatus 13 (190, 196).
palumbus
 see COLUMBA
PANDION
P. haliaëtus 45 (327), 75 (199).
P. haliaëtus haliaëtus 39 (308), 47 (335), 50 (31).
paradisea
 see STERNA
parasiticus
 see STERCORARIUS
PARUS
P. caeruleus 45 (324), 53 (96), 64 (134).
parva
 see PORZANA
parva
 see ACANTHIS *carduelis*, *CARDUELIS carduelis*
PASSER
P. domesticus 26 (57), 65 (305), 67 (72, 80), 71 (33), 75 (172), 85 (281, 291, 294, 295), 88 (66, 67, 71), 91, 93 (339), 96 (10), 100, 101, 108.
P. domesticus domesticus 75 (39, 60, 172).
P. petronia 13 (186, 195).
P. nivalis 14 (122).
 see MOTACILLA *cinerea*
P. cristatus 5 (124), 8 (18).
 see IXOBRYCHUS *minutus*
 see PROCELLARIA
 see HYDROBATES
P. marina hypoleuca 39 (430), 45 (327), 75 (178).
P. temminckii 13 (191, 196).
 see ANAS, MARECA.
 see NEOPHRON
P. cothurnix 4 (84).
P. coturnix 1 (7), 5 (70, 124).
P. perdix 96 (9).

	<i>P. rubra</i>	1 (7), 4 (84), 5 (70, 71, 123).
perdix	see PERDIX	
pergrinus	see FALCO	
PETRONIA	<i>P. petronia</i>	14 (127), 39 (436), 45 (326), 75 (245).
	<i>P. petronia maderensis</i>	27 (50).
petronia	see FRINGILLA, PASSER, PETRONIA.	
phaeopus	see NUMENIUS	
phaeopus	see NUMENIUS phaeopus	
PHAETON	<i>P. aetherens</i>	83 (88).
PHALACROCORAX	<i>P. carbo</i>	13 (194, 196), 14 (110), 39 (430), 45 (325), 75 (180).
PHALAROPUS	<i>P. fulvicarius</i>	14 (107), 39 (434), 45 (325), 58 (147), 75 (221, 222), 101.
	<i>P. hyperboreus</i>	14 (106).
	<i>P. lobatus</i>	39 (434), 45 (325), 75 (221), 101.
PHASIANUS	<i>P. colchicus</i>	5 (123), 8 (18), 65 (305), 67 (73, 80), 85 (281), 96 (9).
PHILOMACHUS	<i>P. pugnax</i>	45 (317, 328), 47 (335), 50 (32), 51 (30), 75 (214), 103 (6).
phoeopus	see NUMENIUS	
PHYLLOSCOPUS	<i>P. collybita</i>	37 (409), 45 (320).
	<i>P. trochilus</i>	37 (409).
PICUS	<i>P. major</i>	1 (7), 4 (84), 5 (67, 120), 6 (99).
	<i>P. minor</i>	8 (19, 30).
pilaris	see TURDUS	
PLATALEA	<i>P. leucorodia</i>	6 (101, 107), 7 (91), 8 (34, 41), 13 (193, 196), 14 (107), 39 (431), 44 (231), 45 (315, 326), 75 (81, 188).
	<i>P. leucorodia leucorodia</i>	29 (63).
platyrhyncha	see ANAS	
platyrhyncha	see ANAS platyrhyncha	
platyrhynchos	see ANAS	
PLAUTUS	<i>P. alle</i>	75 (5, 227), 94 (1), 102, 104, 106.
PLECTROPHANES	<i>P. nivalis</i>	6 (96, 107), 7 (90), 8 (26, 41).
PLECTNOPHENAX	<i>P. nivalis</i>	13 (185, 195, 199), 39 (436), 45 (318, 325), 66 (60), 71 (32), 75 (9, 57, 243), 92 (485), 108.
	<i>P. nivalis nivalis</i>	47 (337), 50 (33).
PLEGADIS	<i>P. falcinellus</i>	75 (188).
PLOTUS	<i>P. alle</i>	45 (317, 325).
PLUVIALIS	<i>P. apricarius</i>	13 (191, 196), 75 (206), 77 (452).
	<i>P. varius</i>	13 (191, 196, 199).
pluvialis	see CHARADRIUS	
PODICEPS	<i>P. auritus</i>	5 (127), 39 (429), 45 (325), 47 (336), 50 (32), 75 (176).
	<i>P. caspicus</i>	75 (175, 176).
	<i>P. cristatus</i>	75 (175).
	<i>P. griseigena</i>	75 (176).
	<i>P. nigricollis</i>	13 (195, 197), 39 (429), 45 (313, 325), 75 (176).
	<i>P. nigricollis nigricollis</i>	29 (61), 50 (32).
	<i>P. rubricollis</i>	13 (195, 197).
	<i>P. ruficollis</i>	45 (313).
podiceps	see PODILYMBUS	
PODILYMBUS	<i>P. podiceps</i>	29 (61), 39 (429), 45 (328), 75 (80, 176, 177).
polatzeki	see FRINGILLA	

- pomarinus** see STERCORARIUS
- PORPHYRIO**
P. alleni 14 (96), 39 (433), 45 (324, 327).
P. caesius 13 (192, 196).
- PORPHYRULA**
P. alleni 75 (80, 201).
P. martinica 75 (80, 201), 102 (4), 104 (114).
- PORZANA**
P. intermedia 14 (95).
P. parva 14 (95), 39 (432), 45 (326), 75 (203).
P. porzana 75 (202).
P. pusilla intermedia 39 (432), 45 (326), 75 (202).
- porzana** see PORZANA
- pratensis** see CREX
- PROCELLARIA**
P. cinerea 58 (146).
P. diomedea 58 (145, 147, 148), 70 (123).
P. diomedea borealis 58 (145, 147, 148).
P. diomedea diomedea 58 (145, 146, 148).
P. diomedea disputans 58 (146).
P. diomedea edwardsi 58 (145, 148).
P. diomedea flavirostris 58 (145, 146).
P. flavirostris 58 (147).
P. gravis 58 (148).
P. hasitata 58 (146).
P. pelagica 75 (84).
P. puffinus 4 (84), 58 (147).
P. puffinus mauretanicus 58 (148).
- PUFFINUS**
P. anglorum 6 (104, 107), 7 (91), 8 (39, 42), 13 (194, 197), 14 (99), 46 (4).
P. assimilis 39 (147, 151), 46 (6), 64 (131), 75 (89), 88 (66), 108.
P. assimilis baroli 39 (429), 46 (6, 8), 68 (111, 112), 75 (88, 89, 90), 85 (280), 86 (68), 96 (9).
P. assimilis godmani 26 (14), 27 (51).
P. cinereus 5 (127), 13 (194, 197).
P. diomedea borealis 7 (31).
P. fuliginosus 46 (4).
P. gravis 45 (319, 327), 46 (6, 8), 51 (29, 30), 75 (179).
P. griseus 45 (319, 327), 46 (4, 6, 7), 51 (29, 30), 75 (179, 180).
P. kuhlii 39 (149, 150, 151, 153), 46 (6), 53 (91, 98), 64 (125), 88 (66, 68), 96 (16).
P. kuhlii borealis 24 (45), 27 (14, 51, 65), 29 (60, 61, 62), 39 (142, 146, 153, 305, 436), 42 (127), 46 (6, 9), 60 (116), 95 (2, 3), 96 (16).
P. kuhlii edwardsii 29 (62).
P. kuhlii flavirostris 14 (97, 99), 24 (45).
P. kuhlii kuhlii 14 (97), 29 (62), 39 (305, 306, 307).
P. major 6 (103, 107), 7 (91), 8 (39, 42), 46 (6).
P. obscurus 6 (104, 107), 7 (91), 8 (39, 40, 42), 13 (194, 197), 46 (5), 68 (111).
P. obscurus bailloni 14 (99).

	<i>P. puffinus</i>	39 (151), 46 (4), 60 (116), 64 (125), 75 (88), 85 (279), 86 (68, 69) 88 (66), 101, 108.
	<i>P. puffinus puffinus</i>	27 (51), 39 (142, 147, 304, 307), 42 (127), 45 (313), 46 (6, 7), 71 (30), 75 (59, 87), 96 (9, 16).
puffinus	see PROCELLARIA, PUFFINUS.	
puffinus	see PUFFINUS <i>puffinus</i>	
pugnax	see PHILOMACHUS	
purpurea	see ARDEA	
pusilla	see CALIDRIS, PORZANA.	
PTERODROMA	<i>P. mollis feae</i>	27 (51).
PYRRHULA	<i>P.</i>	96 (16).
	<i>P. cineracea</i>	39 (421).
	<i>P. coccinea</i>	1 (7), 3 (413), 4 (53, 84), 5 (67, 68, 71, 115), 6 (97, 108), 7 (92), 8 (19, 28), 13 (185, 195), 75 (165).
	<i>P. europea</i>	5 (115, 116), 6 (108), 8 (19).
	<i>P. griseiventris</i>	39 (421).
	<i>P. kurilensis</i>	39 (421).
	<i>P. murina</i>	6 (97, 105, 107, 108), 7 (90, 92), 8 (19, 28, 41, 42), 9 (279), 11 (5), 13 (185, 195, 200), 14 (83), 14 bis, 15 (98), 18 (118), 25 (6, 7, 8, 9, 10), 26 (57), 30, 33, 33 bis, 39 (421, 427), 52 bis, 71 (25, 34), 75 (169), 78, 83 bis, 96 (16), 110 (7), 112.
	<i>P. pyrrhula</i>	39 (150, 153, 421), 45 (322), 53 (91, 95), 63 (83), 88 (67, 71), 96 (9, 16).
	<i>P. pyrrhula cassini</i>	29 (79).
	<i>P. pyrrhula coccinea</i>	39 (422).
	<i>P. pyrrhula europaea</i>	39 (141, 421, 422, 423).
	<i>P. pyrrhula murina</i>	14 (125), 27 (14), 29 (78, 79), 39 (420, 421, 422, 423, 424), 42 (132), 56 (186), 60 (117, 119), 63 (82, 84), 64 (131), 75 (19, 74, 164), 77 (452), 80 (194), 83 (87), 85 (281, 290, 294), 88 (67), 96 (10, 17), 97 (10), 105, 112.
	<i>P. pyrrhula pyrrhula</i>	39 (141, 421, 422, 423).
	<i>P. vulgaris</i>	4 (52, 53), 6 (98), 8 (29), 25 (7, 8, 10), 26 (57).
pyrrhula	see PYRRHULA	
pyrrhula	see PYRRHULA <i>pyrrhula</i>	
querquedula	see ANAS	
ralloides	see ARDEOLA	
RALLUS	<i>R. aquaticus</i>	56 (185), 75 (202).
RECURVIROSTRA	<i>R. avoetia</i>	45 (317, 328), 75 (220), 103 (4).
REGULUS	<i>R.</i>	53 (96).
	<i>R. cristatus</i>	1 (7), 4 (84), 5 (69, 119), 6 (96, 106), 7 (90), 8 (25, 41), 13 (187, 195), 75 (146, 147).
	<i>R. cristatus azoricus</i>	10 (454), 29 (73).

- R. *ignicapillus madeirensis* 27 (51), 57 (8).
 R. *ignicapillus teneriffae* 57 (8).
 R. *madeirensis* 8 (25).
 R. *regulus* 39 (150, 151, 152, 153), 45 (320, 323),
 53 (91, 93, 95, 97, 98), 55 (467), 57
 (1, 8), 63 (83), 71 (24), 73, 75 (60,
 149), 85 (288), 86 (68), 88 (67, 71,
 72), 91, 92 (485), 96 (14, 16), 97 (6),
 101, 108.
 R. *regulus anglorum* 75 (148).
 R. *regulus azoricus* 14 (80, 119), 24 (48), 27 (14), 25 (9),
 29 (72, 73, 74), 39 (142, 340, 341, 342),
 42 (131), 57 (2, 3), 60 (116), 63 (82),
 64 (129), 75 (26, 146, 147, 148, 149),
 83 bis, 85 (281, 287, 294), 88 (6, 7),
 96 (10, 16).
 R. *regulus inermis* 29 (73, 74), 39 (142, 340, 341, 342),
 42 (131), 57 (2, 3), 63 (82), 64 (129),
 75 (38, 147, 148, 149), 85 (281, 287,
 294), 88 (67), 96 (10, 16).
 R. *regulus regulus* 39 (341, 342), 75 (146).
 R. *regulus sancta-mariae* 57 (2, 3), 63 (82), 75 (149), 85 (281,
 294), 88 (67), 96 (10).
 R. *regulus teneriffae* 39 (142), 96 (16).
regulus see REGULUS
regulus see REGULUS *regulus*
ridibundus see HYDROCOLOEUS, LARUS.
ridibundus see HYDROCOLOEUS *ridibundus*, LARUS *ridibundus*.
risorius see TURTUR
 RISSA
 R. *tridactyla* 6 (103, 107), 7 (91), 8 (38, 42), 13
 (194, 197), 39 (434), 45 (325), 64
 (131), 75 (81, 225), 83 bis.
 R. *tridactyla tridactyla* 47 (337), 50 (31).
 R. *tridactylus* 14 (102).
 see BUTEO *buteo*
 see ERYTHACUS, MOTACILLA, SYLVIA.
 see ERYTHACUS *rubecula*
 see PERDIX
 see PODICEPS
 see ANAS
 see ALECTORIS, CACCABIS.
 see ALECTORIS *rufa*
 see CALANDRELLA
 see PODICEPS
 see CACCABIS
 see HIRUNDO
 see HIRUNDO *rustica*
 see SCOLOPAX
 see SCOLOPAX *rusticola*
 see SETOPHAGA

rothschildi
rubecula
rubecula
rubra
rubricollis
rubripes
rufa
rufa
rufescens
ruficollis
rufus
rustica
rustica
rusticola
rusticola
rusticilla

sabini see XEMA
sanctae-maria see REGULUS *regulus*
sandvicensis see STERNA
sandvicensis see STERNA *sandvicensis*

SAXICOLA	S. <i>oenanthe</i>	6 (96, 106), 7 (90), 8 (25, 41), 13 (188, 195).
	S. <i>oenanthe leucorrhoea</i>	14 (117).
	S. <i>oenanthe oenanthe</i>	14 (117).
scandiaca	see NYCTEA	
schioleri	see OENANTHE <i>oenanthe</i>	
schmitzi	see MOTACILLA <i>boarula</i> , MOTACILLA <i>cinerea</i> , TYTO <i>alba</i> .	
schintzi	see CALIDRIS <i>alpina</i>	
SCOLOPAX	S. <i>gallinago</i>	1 (7), 4 (84), 5 (70, 125).
	S. <i>rusticola</i>	1 (7), 4 (84), 5 (70, 125), 6 (101, 107), 7 (97), 8 (35, 41), 13 (191, 196), 14 (80, 105), 24 (47), 39 (144, 149, 151, 152, 153), 45 (320, 323), 53 (98), 64 (131), 75 (38, 60, 113, 209), 85 (280, 285), 87, 88 (67, 69), 89, 91, 96 (9), 97 (9), 101, 107 (45), 108, 110 (5).
	S. <i>rusticola rusticola</i>	27 (51), 29 (68), 39 (142, 316, 438), 42 (129), 63 (82, 83), 75 (59), 96 (16).
SERINUS	S. <i>canaria</i>	60 (116), 64 (130), 85 (281, 289, 290, 294), 86 (68), 88 (66, 67, 71), 92 (485), 93 (339), 100 (1), 101, 108.
	S. <i>canaria canaria</i>	14 (124), 24 (49), 27 (14, 51), 29 (80), 37 (401-410), 63 (81, 85).
	S. <i>canaria serinus</i>	37 (401-410).
	S. <i>canarius</i>	8 (29, 41), 13 (186, 195), 22 (84), 26 (57), 39 (150, 151, 152, 153), 45 (322, 323), 53 (97), 55 (470), 71 (23), 75 (170), 96 (10, 14), 97 (6).
	S. <i>canarius canarius</i>	39 (142, 424, 425), 42 (132), 75 (39, 42, 59, 170), 83 bis, 95 (2, 3, 4), 96 (16).
	S. <i>canarius serinus</i>	39 (424).
	S. <i>hortulanus</i>	6 (98, 107), 7 (90).
	S. <i>serinus canaria</i>	14 (80).
serinus	see FRINGILLA, SERINUS.	
serinus	see SERINUS <i>canaria</i> , SERINUS <i>canarius</i> .	
serrator	see MERGUS	
SETOPHAGA	S. <i>ruticilla</i>	77 (452), 82 (195), 83 (88).
skua	see CATHARACTA, STERCORARIUS.	
SOMATERIA	S. <i>mollissima</i>	14 (109), 39 (432), 45 (327), 75 (197).
SQUATAROLA	S. <i>squatarola</i>	14 (103), 45 (325), 47 (335, 338), 50 (31), 75 (206).
	S. <i>squatarola squatarola</i>	39 (315).
squatarola	see SQUATAROLA	
squatarola	see SQUATAROLA <i>squatarola</i>	
sparverius	see FALCO	
SPATULA	S. <i>clupeata</i>	64 (126).
spatzi	see CHARADRIUS <i>alexandrinus</i>	
spinoletta	see ANTHUS	
spodiogena	see FRINGILLA	
spodiogenys	see FRINGILLA <i>coelebs</i>	
sponsa	see AIX	
stagnatilis	see TOTANUS, TRINGA.	
stellaris	see ARDEA, BOTAURUS.	

stellaris	see BOTAURUS stellaris	
stellata	see GAVIA	
STERCORARIUS	S. longicaudus	45 (319), 5 (29).
	S. parasiticus	71 (29), 75 (222).
	S. pomarinus	75 (222).
	S. skua	66 (59).
STERPSILAS	S. interpres	6 (100, 107), 7 (91), 8 (33, 41), 13 (191, 196).
STREPTOPELIA	S. turtur	75 (229).
STERNA	S. -	45 (317).
	S. cautiaca	14 (101).
	S. dougallii	6 (103, 107), 7 (91), 8 (38, 42), 13 (195, 197), 14 (101), 39 (146, 149, 151, 154, 324, 326), 53 (98), 64 (129), 71 (29, 34), 75 (124, 125, 126), 85 (280), 88 (66), 101, 108.
	S. dougallii dougallii	29 (69), 39 (325), 42 (130), 96 (10).
	S. fluviatilis	6 (102, 103, 107), 7 (91), 8 (37, 38), 14 (100), 75 (124).
	S. fuliginosa	14 (101).
	S. fuscata	39 (152), 45 (328), 75 (227).
	S. fuscata fuscata	39 (434).
	S. hirundo	1 (7), 4 (84), 5 (70, 71, 126), 8 (42), 13 (194, 197), 39 (149, 151, 152, 153, 154, 323, 324, 325, 326), 42 (129), 45 (317), 51 (29), 53 (91, 98), 60 (116), 64 (129), 71 (29), 75 (120, 121, 123, 125, 247), 84 (4, 5), 85 (280), 86 (68), 88 (66, 69), 96 (16), 98 (1), 101, 108.
	S. hirundo hirundo	24 (46), 27 (14, 51), 29 (69), 39 (142, 146), 47 (334, 338), 50 (31), 75 (38), 96 (10, 16).
	S. macrura	45 (317, 319).
	S. paradisaea	50 (29, 30), 75 (123, 226).
	S. sandvicensis	39 (434), 45 (325), 75 (226), 80 (196) 101.
	S. sandvicensis sandvicensis	27 (51).
STRIX	S. aluco	75 (137, 248).
	S. flammea	4 (83), 5 (67, 116), 6 (94, 106), 7 (90), 8 (22, 41), 13 (189, 195), 14 (113).
STURNUS	S. vulgaris	1 (7), 4 (84), 5 (69, 119), 6 (98, 107), 7 (90), 8 (30, 41), 13 (118, 195), 26 (57), 39 (150, 151, 152, 153, 154), 45 (322), 53 (91, 96), 88 (67, 70), 91, 92 (485), 96 (9, 14, 16), 97 (7), 100 (2), 101, 108.
	S. vulgaris granti	14 (80, 127), 22 (43), 24 (49), 25 (9), 27 (14), 29 (77), 39 (141, 346), 42 (123, 131), 60 (116, 119), 61 (127), 63 (81), 64 (130), 75 (6, 39, 59, 79, 153, 154, 157), 83 bis, 85 (281, 294), 86 (68), 95 (4), 96 (10).

	<i>S. vulgaris vulgaris</i>	14 (127), 29 (77), 39 (346, 347, 348), 63 (81, 83), 75 (156, 243).
SULA	<i>S. bassana</i>	14 (110), 39 (430), 45 (325), 56 (184), 65 (305), 66 (49), 67 (75, 81), 108, 75 (250), 77 (451), 83 (88).
	<i>S. leucogaster</i>	
	<i>S. sula</i>	75 (180).
<i>sula</i>	see SULA	
<i>sulphurea</i>	see MOTACILLA	
<i>superbus</i>	see ERYTHACUS <i>rubecula</i>	
SYLVIA	<i>S. atricapilla</i>	1 (7), 4 (84), 5 (119), 6 (95, 106), 7 (90), 8 (24, 41), 13 (187, 195, 199), 14 (80, 118), 22 (586), 39 (144, 150, 151, 152, 153, 154), 42 (124), 45 (323), 48 (124), 53 (91, 93, 96, 97, 98), 54 (101, 107), 60 (116), 64 (129, 134), 75 (144, 242), 85 (294), 88 (67, 71), 91, 96 (10, 14, 16), 97 (6), 100 (2) 101, 108, 69 (14), 71 (23, 34), 75 (38, 59, 144, 242), 83 bis. 85 (281, 286, 287, 284), 86 (68).
	<i>§. atricapilla atlantis</i>	
	<i>S. atricapilla caprote</i>	27 (64).
	<i>S. atricapilla heinekeni</i>	14 (119), 27 (39, 51, 64), 29 (75), 39 (142, 337, 339), 48 (125), 54 (101), 66 (60).
	<i>S. atricapilla obscura</i>	27 (64), 54 (102, 107), 75 (144, 145), 85 (294), 96 (16).
	<i>S. conspiciata</i>	45 (324).
	<i>S. conspiciata bella</i>	27 (61).
	<i>S. heinekeni</i>	14 (119).
	<i>S. melanocephala</i>	45 (324).
	<i>S. rubecula</i>	1 (7), 5 (69).
TACHYPETES	<i>T. aquila</i>	13 (194, 197).
TADORNA	<i>T. tadorna</i>	75 (198).
<i>tadorna</i>	see TADORNA	
<i>tenerifae</i>	see REGULUS <i>ignicapillus</i> , REGULUS <i>regulus</i> .	
<i>temminckii</i>	see PELIDNA	
<i>tenuirostris</i>	see NUMENIUS	
<i>testacea</i>	see EROLIA	
<i>teydea</i>	see FRINGILLA	
THALASSIDROMA	<i>T.</i>	5 (70).
	<i>T. bulwerii</i>	1 (7), 4 (84), 5 (71, 127), 13 (194, 197).
	<i>T. magnus</i>	5 (71).
	<i>T. wilsoni</i>	6 (104, 107, 108), 7 (91, 92), 8 (19, 40, 42), 13 (194, 197).
TINNUNCULUS	<i>T.</i>	42 (122).
	<i>T. alaudarius</i>	6 (93, 106), 7 (90), 8 (21, 41), 13 (189, 196).
<i>tinnunculus</i>	see CERCHNEIS, CERCUNEIS, FALCO.	
<i>tinnunculus</i>	see CERCUNEIS <i>tinnunculus</i> , FALCO <i>tinnunculus</i> .	
<i>tintillon</i>	see FRINGILLA	
<i>tintillon</i>	see FRINGILLA <i>coelebs</i>	
<i>torda</i>	see ALCA	
<i>torquatus</i>	see PALUMBUS	
TOTANUS	<i>T. erythropus</i>	75 (214).
	<i>T. flavipes</i>	75 (80, 215).

- T. **fuscus** 4 (84), 5 (70, 125), 13 (191, 196), 14 (104), 75 (214).
- T. **litoreus** 14 (104).
- T. **nebularius** 75 (214).
- T. **stagnatilis** 75 (216, 246).
- T. **totanus** 75 (214).
- totanus** see TOTANUS, TRINGA.
- tridactyla** see RISSA
- tridactyla** see RISSA **tridactyla**
- tridactylus** see LARUS, RISSA.
- TRINGA
- T. 86 (68).
- T. **canuta** 13 (191, 196, 199).
- T. **canutus** 14 (105).
- T. **erythropus** 39 (433), 45 (328), 47 (334), 50 (32), 101.
- T. **flavipes** 39 (152, 315), 45 (328), 47 (336), 50 (33), 51 (30), 84 (7).
- T. **fuscicollis** 14 (128).
- T. **glareola** 66 (56), 75 (215), 84 (1), 103 (4).
- T. **hypoleucos** 66 (57), 75 (215), 84 (2), 101, 103 (6), 108.
- T. **macularia** 66 (57), 84 (2, 3).
- T. **maritima** 6 (101, 107), 7 (91), 8 (35, 41), 14 (105, 128).
- T. **melanoleuca** 85 (280, 285).
- T. **minuta** 14 (105).
- T. **nebularia** 39 (433), 45 (328), 66 (57), 84 (9), 101.
- T. **ochropus** 66 (56), 75 (216), 84 (7).
- T. **stagnatilis** 66 (57).
- T. **totanus** 47 (335, 338), 50 (32), 51 (29).
- trocaz** see COLUMBA
- TROCAZA
- T. **bouvryi** 5 (123).
- T. **laurivora** 5 (123).
- trochilus** see PHYLLOSCOPUS
- TROGLODYTES
- T. **trogodytes** 77 (452), 81 (194), 83 (88), 88 (72).
- trogodytes** see TROGLODYTES
- tschusil** see CARDUELIS **carduelis**
- TURDUS
- T. 66 (60).
- T. **iliacus** 13 (188, 195).
- T. **merula** 1 (7), 4 (52, 84), 5 (69, 71, 119), 6 (95, 106), 7 (90), 8 (23, 41), 13 (188, 195), 14 (116), 26 (57), 39 (150, 151, 152, 153, 154), 45 (323), 53 (91, 96, 98), 63 (83), 75 (137), 85 (294), 88 (67, 70, 72), 91, 92 (485), 96 (2, 14, 16), 97 (6), 101, 108.
- T. **merula agnetae** 85 (294).
- T. **merula azorensis** 14 (80, 116), 24 (48), 25 (9), 27 (14), 29 (76), 39 (142, 332, 334, 440), 42 (130), 60 (116), 63 (83), 64 (129), 71 (23), 75 (38, 59, 139), 83 bis, 85 (281, 285), 96 (10, 16).
- T. **merula cabreræ** 14 (116), 27 (51), 29 (76), 39 (142, 332), 85 (294), 96 (16).

	T. <i>merula</i> mauretanicus	39 (332).
	T. <i>merula</i> merula	39 (332, 334), 75 (139).
	T. <i>mustelinus</i>	14 (115), 39 (436), 45 (328).
	T. <i>pilaris</i>	47 (337), 50 (33), 51 (29), 75 (240).
	T. <i>viscivorus</i>	13 (188, 195), 14 (115), 39 (436), 45 (326), 75 (239).
turricola	see COLUMBA	
TURTUR	T. <i>auritus</i>	13 (190, 196).
	T. <i>risorius</i>	14 (94).
turtur	see COLUMBA, STREPTOPELIA.	
TYTO	T. <i>alba</i>	27 (14), 39 (435), 45 (325), 75 (137, 231, 232).
	T. <i>alba</i> alba	75 (231).
	T. <i>alba</i> ernesti	75 (231).
	T. <i>alba</i> guttata	75 (231).
	T. <i>alba</i> schmitzi	27 (51).
unicolor	see APUS	
unicolor	see APUS unicolor	
UPUPA	U. <i>epops</i>	6 (99, 107), 7 (90), 8 (30, 41), 13 (184, 195), 14 (114), 39 (435), 45 (326), 66 (60), 77 (451).
	U. <i>epops</i> epops	27 (51), 75 (235).
URIA	U. <i>lomvia</i> lomvia	75 (228, 248).
urbica	see CHELIDON, DELICHON.	
VANELLUS	V. <i>cristatus</i>	7 (91), 8 (32, 41), 13 (191, 196).
	V. <i>vanellus</i>	14 (103), 39 (315), 45 (317, 326), 47 (335), 50 (32), 53 (93), 65 (307), 66 (53), 67 (79, 82), 75 (204).
vanellus	see VANELLUS	
varius	see PLUVIALIS	
virginanus	see COLINUS	
viscivorus	see TURDUS	
vociferus	see CHARADRIUS, OXYECHUS.	
vociferus	see OXYECHUS <i>vociferus</i>	
vulgaris	see BUTEO, OTUS, PYRRHULA, STURNUS.	
vulgaris	see STURNUS <i>vulgaris</i>	
willsoni	see THALASSIDROMA	
XEMA	X. <i>sabini</i>	56 (185).
zimmermannoe	see BUTEO <i>buteo</i> .	



Fig. 7. — *Buteo buteo harterti*



Fig. 8. — *Serinus canarius canarius*

ADDENDA

Publications not included in the index. The enumeration corresponds to that of the chronological list.

- 92 bis THALMANN, E. (1977) Von Vögeln auf den Azoren. *Vogel Heimat* 48 (1): 15-16.
- 99 bis HUDSON, R. (1977) *Charadrius semipalmatus* in the Azores. *Bull. B. O. C.* 97 (4): 135.
- 112 KING, W. B. (1981) Endangered Birds of the World. U. I. C. N. — I. C. B. P. *Red Data Book. Vol. 2: Bird* Smithsonian Inst. Press.
- 113 HARTOG, J. C. den & M. S. S. LAVALEYE (1981) Bird observations in the Azores (12 Sept. — 1 Nov. 1979) *Bocagiana, Mus. Mun. Funchal* 56: 19 p.
- 114 VAN IMPE, J. (1981) Note concernant les effectifs du Puffin cendré (*Calonectris diomedea*) aux îles Açores. *ALAUDA* 49 (4): 307.
- 115 BRIEN, Y., A. BESSEC & J.-Y. LESOUEF (1982) Observations du Bouvreuil et du Pigeon ramier aux Açores. *L'Oiseau et R. F. O.* 52 (1): 87-89.