



Título artículo / Títol article: Interaction of the chromium–iron black pigment with porcelanised stoneware

Autores / Autors Mestre Beltrán, Sergio ; Gómez, P. ; Gazulla Barreda, María Fernanda ; Gozalbo Nebot, Ana


Revista: Ceramics International, 2013, vol. 39, no 7

Versión / Versió: Postprint del autor

Cita bibliográfica / Cita bibliogràfica (ISO 690): MESTRE, S., et al. Interaction of the chromium–iron black pigment with porcelanised stoneware. Ceramics International, 2013, vol. 39, no 7, p. 7453-7459

url Repositori UJI: <http://hdl.handle.net/10234/92077>

AUTHOR QUERY FORM

 ELSEVIER	Journal: CERI Article Number: 6499	Please e-mail or fax your responses and any corrections to: E-mail: corrections.eseo@elsevier.macipd.com Fax: + 44 1392 285878
-----------------------------------------------------------------------------------------------	---------------------------------------------------------	-----------------------------------------------------------------------------------------------------------------------------------------------------------------------------------------------------------------------------

Dear Author,

Please check your proof carefully and mark all corrections at the appropriate place in the proof (e.g., by using on-screen annotation in the PDF file) or compile them in a separate list. Note: if you opt to annotate the file with software other than Adobe Reader then please also highlight the appropriate place in the PDF file. To ensure fast publication of your paper please return your corrections within 48 hours.

For correction or revision of any artwork, please consult <http://www.elsevier.com/artworkinstructions>.

Any queries or remarks that have arisen during the processing of your manuscript are listed below and highlighted by flags in the proof. Click on the [Q](#) link to go to the location in the proof.

Location in article	Query / Remark: click on the Q link to go Please insert your reply or correction at the corresponding line in the proof
Q1	Please confirm that given names and surnames have been identified correctly and are presented in the desired order.
Q2	Please check the edit(s) made in the sentence “The B..... were compared”, and correct if necessary.
Q3	Please check the edit(s) made in the sentence “The cycle.....air injection”, and correct if necessary.
Q4	Please check the edit(s) made in the sentence “The arising.....ICDD cards”, and correct if necessary.

Thank you for your assistance.

Please check this box or indicate your approval if you have no corrections to make to the PDF file.



Interaction of the chromium–iron black pigment with porcelanised stoneware

S. Mestre*, P. Gómez, M.F. Gazulla, A. Gozalbo

Instituto de Tecnología Cerámica, Asociación de Investigación de las Industrias Cerámicas, Universitat Jaume I, Castellón, Spain

Received 16 November 2012; received in revised form 15 February 2013; accepted 26 February 2013

Abstract

A study has been undertaken on the interaction between the $(\text{Fe,Cr})_2\text{O}_3$ black pigment and an industrial porcelanised stoneware composition at its firing temperature. The results indicate that the glassy phase that forms during firing preferentially extracts Fe_2O_3 from the pigment and probably contributes some Al_2O_3 to it, enriching the pigment composition in Cr_2O_3 , without changing pigment crystal structure. The pigment alteration process mainly affects porcelanised stoneware microstructure and, to a lesser extent, color. © 2013 Published by Elsevier Ltd and Techna Group S.r.l.

Keywords: C. Color; Ceramic pigments; Porcelanised stoneware; Reaction

1. Introduction

The $(\text{Fe,Cr})_2\text{O}_3$ pigment, known as chromium–iron black, has long been used in the ceramic industry [1,2], despite its tendency to produce brown hues [3]. However, the rise in price of cobalt-based black pigments has increased interest in optimizing the characteristics of this pigment.

The $(\text{Fe,Cr})_2\text{O}_3$ pigment is synthesized by heat treatment at temperatures around 1000 °C from a mixture of Cr_2O_3 and Fe_2O_3 , whose proportions vary depending on the characteristics of the pigment to be obtained, to which small quantities of certain salts may be added as mineralisers. Structurally, the pigment is a substitutional solid solution with a corundum-type crystalline network. The Fe^{3+} and Cr^{3+} cations occupy two-thirds of the octahedral vacancies in the compact hexagonal network formed by the oxygen anions, and are randomly distributed according to their proportion in the mixture. A solid solution forms in the entire range of compositions at temperatures below 1380 °C,

while a different phase appears at higher temperatures, with a spinel-type structure [4]. The pigment synthesis reaction mechanism has been described elsewhere [5], and a kinetic equation has been proposed which contains the effect of synthesis temperature, reactant quantities and particle size distribution [6,7].

Less attention has generally been devoted to the interaction, during firing, of pigments with different ceramic products into which they have been incorporated. A few available studies focus on the interaction between pigments and different types of glazes (chrome–tin pink sphepe [8–10], brown Cr–Fe–Zn–Al spinel [11], and also the chromium–iron black [12]). More recently, inkjet technology has promoted the study of interactions between glazes and nanosized pigments [13]. However, pigment interactions with other types of ceramic products have not been addressed. The $(\text{Fe,Cr})_2\text{O}_3$ pigment is extensively used in coloring porcelanised stoneware, a ceramic floor tile made essentially from quartz, feldspars and white clays, which is fired at relatively high temperatures (1180–1200 °C). Fired porcelanised stoneware has practically zero apparent porosity and low closed porosity. From a mineralogical point of view porcelanised stoneware consists mainly of glassy phase that contains dispersed particles of quartz and mullite (mullite develops during heating as a product of the thermal decomposition of kaolinitic clays, and during

*Correspondence to: Instituto de Tecnología Cerámica, Asociación de Investigación de las Industrias Cerámicas, Universitat Jaume I, Campus Universitario Riu Sec, s/n, 12006 Castellón, Spain. Tel.: +34 964 342424; fax: +34 964342425.

E-mail addresses: smestre@itc.uji.es, marije.jose@itc.uji.es (S. Mestre).

the residence at peak temperature as a result of devitrification from the glassy phase that forms during firing) [14].

As porcelanised stoneware production has increased notably in the last decade, and much porcelanised stoneware is colored to improve tile esthetic qualities, the present study has been undertaken to identify the interaction mechanism between the $(\text{Fe,Cr})_2\text{O}_3$ black pigment and the porcelanised stoneware, and to determine the effect of this interaction on the microstructure, mineralogical composition and color of the fired tile. This information is necessary to improve the pigment characteristics.

2. Experimental procedure

The study has been conducted with an industrial black pigment that had a composition of approximately $\text{Fe}_{1.28}\text{Cr}_{0.72}\text{O}_3$, whose only crystalline phase was a solid solution with a corundum-type structure (Fig. 1). The porcelanised stoneware was obtained from a typical spray-dried raw materials composition used in the ceramic floor tile industry in Castellón.

Two different mixtures were prepared. The “A” mixture was a blend of 95% spray-dried porcelanised stoneware composition and 5% pigment (percentages by weight). The “B” mixture was the spray-dried porcelanised stoneware composition, without any pigment addition; these served as a reference with which the colored samples were compared. Both mixtures were homogenized by wet milling in a planetary mill (Pulverisette 5, Fritsch GmbH, Germany), using acetone as fluid. The resulting suspensions were dried under infrared lamps and the dry powder was put through a 600 μm mesh sieve to remove large agglomerates.

The two dry mixtures were moistened to a water content of 0.055 kg water/kg dry solid. Cylindrical test specimens were then formed by uniaxial dry pressing in an automatic laboratory press (P/Mignon, C.C.R. di Nannetti, Italy) at a maximum pressure of 400 kg/cm^2 . The resulting

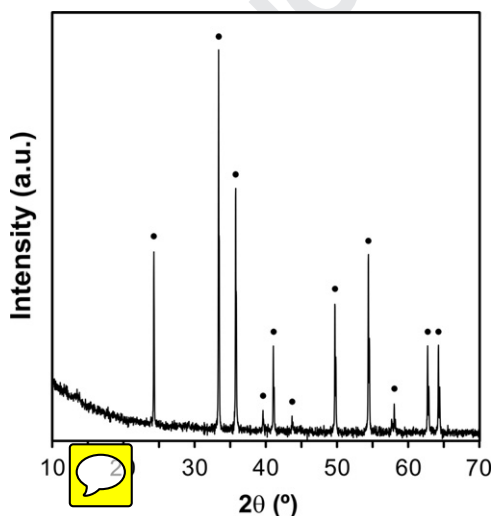


Fig. 1. Diffractogram of the pigment, in which the positions of the reflections corresponding to a $\text{Cr}_{0.8}\text{Fe}_{1.2}\text{O}_3$ solid solution are marked.

compacts were dried in a laboratory oven at 110 °C for at least 2 h before firing.

The test specimens were fired in an electric laboratory furnace (RHF16/8, Carbolite Furnaces Ltd., UK), applying a similar thermal treatment to that used in manufacturing porcelanised stoneware in industrial practice. The cycle consisted of heating at 25 °C/min to 1180 °C/min, which is the appropriate maturing temperature for the porcelanised stoneware composition used, with different soaking times at this temperature (hereafter t_s), followed by cooling inside the furnace without air injection. A wide range of soaking times (from 0.1 to 480 min) was chosen in order to monitor fully the evolution of the pigment–porcelanised stoneware interaction. Four test specimens of every composition were judiciously arranged inside the furnace chamber in each firing to minimize the effects of possible temperature gradients.

The CIELab chromatic coordinates of the fired test specimens were determined with a diffuse reflectance spectrophotometer (Color-Eye 7000, GretagMacbeth, Switzerland). The measurement was made with a CIE 10-degree standard observer and CIE standard illuminant D65, and included the specular and ultraviolet components. The meaning of the chromatic coordinates is as follows:

- L^* is the white ($L^*=100$), black ($L^*=0$) axis
- a^* is the red ($a^* > 0$), green ($a^* < 0$) axis
- b^* is the yellow ($b^* > 0$), blue ($b^* < 0$) axis

The preparation of A and B fired specimens for X-ray diffraction (XRD) differed for each type of samples. The “A” fired test specimens were milled in a ring mill (HSM1000A, Herzog Maschinenfabrik GmbH, Germany) without any further treatment. The “B” fired test specimens were also milled, first, in the ring mill; they were then mixed in the appropriate proportion with the pigment in order to subsequently obtain fired porcelanised stoneware standards in which no interaction had yet occurred with the pigment. Mixing took place in the same planetary mill described above and also with acetone as a fluid; however, in this case, small-volume agate jars were used in view of the small quantity of sample. The resulting suspensions were then dried under infrared lamps and the dry powder was put through a 200 μm mesh sieve to remove any large particles.

The crystalline phases were identified from diffractograms obtained with an XRD instrument (D8 Advance, Bruker, Germany) using $\text{Cu K}\alpha_{1,2}$ (1.5406 Å) radiation, with a goniometer radius of 250 mm. The data were collected on a diffractometer with Bragg–Brentano geometry (θ/θ), between 10° and 70° (2θ), with a step size of 0.02–0.5 s per step. The diffractometer optics consisted of a primary system of Soller slits and a fixed aperture of 0.5 mm. A rapid solid-state detector (Vantec, Bruker, Germany) fitted with a system of Soller slits and nickel filter was used. The X-ray tube was operated at 40 kV and

40 mA. The results were processed with EVA and TOPAS-P computer programs (Bruker, Germany). The crystalline phases were identified with ICDD cards, as follows: pigment (00-034-0412 (I) Chromium Iron Oxide), quartz (00-046-1045 (*) Quartz, syn), mullite (00-015-0776 (I) Mullite, syn), hematite (00-033-0664 (*) Hematite, syn), and eskolaite (00-038-1479 (*) Eskolaite, syn).

The microstructural changes in the fired test specimens were determined by optical microscopy on fragments of the test specimens embedded in epoxy resin and polished. The changes in pigment particle characteristics were analyzed by scanning electron microscopy (XL30, Philips, The Netherlands) with energy-dispersive microanalysis (DX4, EDAX, USA) on the same polished test specimen fragments used in the microstructural characterization.

3. Results and discussion

3.1. Evolution of microstructure

Figs. 2–4 depict the microstructures of the polished fired test specimens of series “A” and “B”, fired at 1180 °C with different soaking times.

The figures show that the interaction between the porcelanised stoneware and the pigment leads to changes in the microstructure, compared with the non-pigmented specimen microstructure, when the heat treatments are very long. At very short interaction times ($t_S=0.1$ min, Fig. 2) no differences are observed between the pigmented and non-pigmented specimen microstructures: both microstructures display numerous interconnected pores, corresponding to a reduced degree of sintering. At the usual soaking time for this porcelanised stoneware composition ($t_S=18$ min, Fig. 3) the product's characteristic microstructure is obtained, which contains closed pores with quite rounded shapes. However, the presence of the pigment is observed leading to slightly more rounded pores, owing to a slightly more fluid glassy phase.

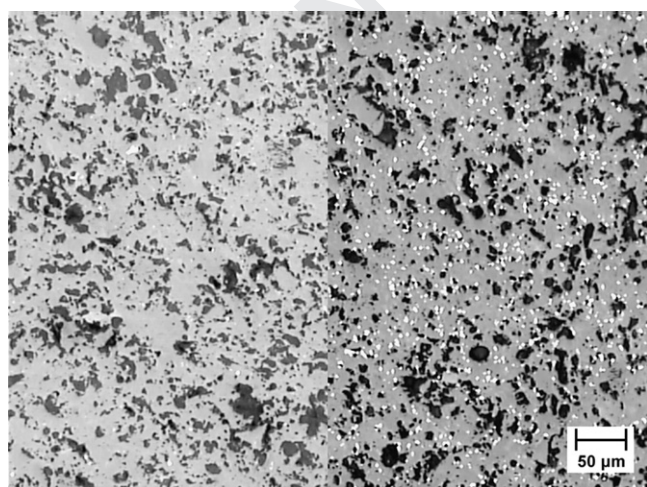


Fig. 2. Microstructures of the fired test specimens at $t_S=0.1$ min (right: A series; and left: B series).

The greatest difference in microstructure develops at the longest soaking times ($t_S=480$ min, Fig. 4); here, the pigmented specimens display a greater number of pores, which are also larger. Excessively long residence times at peak temperature are known to cause the gas pressure in the pores to increase pore volume until equilibrium is reached between this pressure and the curvature stress of the gas–glassy phase interface, resulting in bloating of the pieces. However, the abnormal development of porosity when the pigment is added implies the existence of an additional source of gases, or the presence of a much less viscous glassy phase. Both mechanisms can act in this case, as discussed in the following section.

3.2. Evolution of the crystalline phases

The XRD analysis results indicate that the quantity of quartz decreases as t_S increases, following a logarithmic trend, as evidenced by Fig. 5 in which the reflection intensity

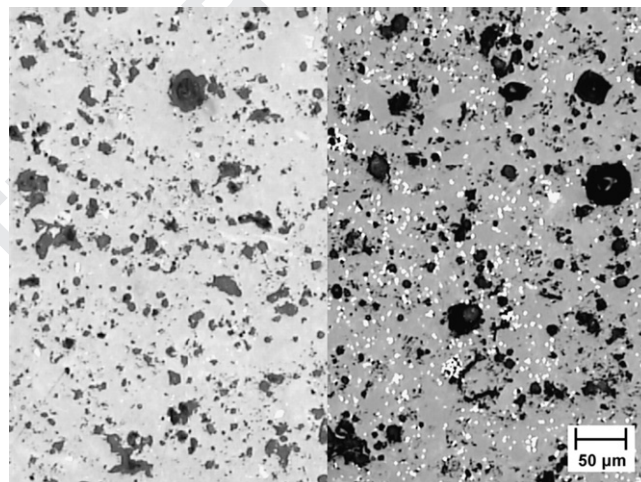


Fig. 3. Microstructures of the fired test specimens at $t_S=18$ min (right: A series; and left: B series).

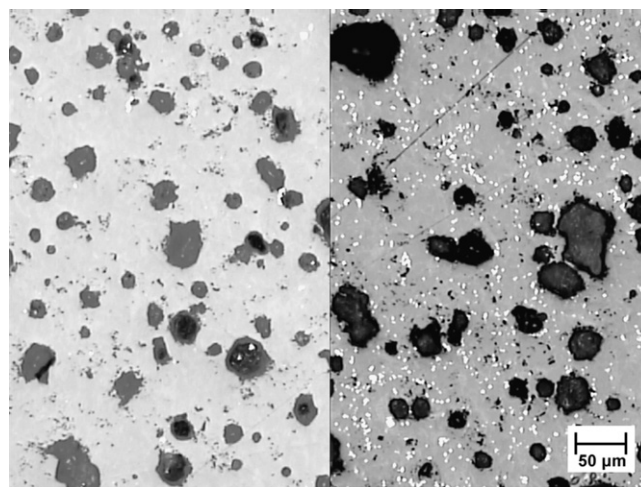


Fig. 4. Microstructures of the fired test specimens at $t_S=480$ min (right: A series; and left: B series).

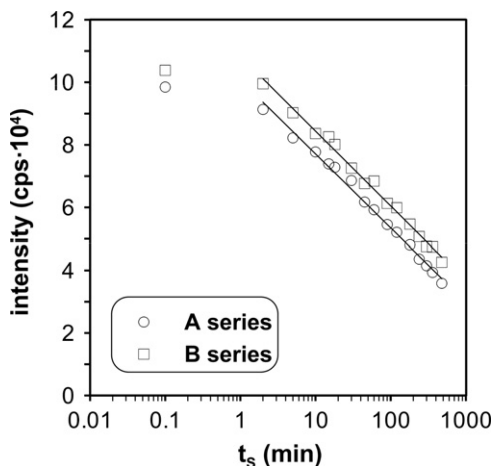


Fig. 5. Evolution of quartz reflection intensity I_{100} with t_S .

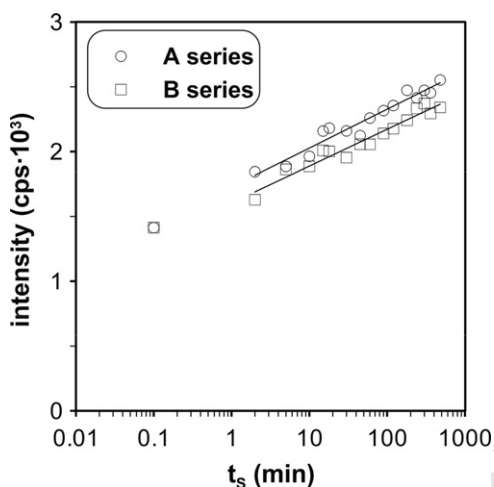


Fig. 6. Evolution of mullite reflection intensity I_{100} with t_S .

I_{100} of this phase is plotted against soaking time. The only effect of the presence of the pigment on the evolution of quartz is a reduction in reflection intensity, attributable to the dilution caused by the incorporation of the pigment in conjunction with the increase in the X-ray mass absorption coefficient of the material; however, the pigment does not appear to affect process kinetics, since the two straight lines are practically parallel.

The quantity of mullite increases with t_S , as shown by the evolution of the intensity of the I_{100} reflection of this phase (Fig. 6), and approximately follows a logarithmic trend, albeit less clearly than in the case of quartz. As the intensity of the mullite reflections, at the same t_S , is always slightly higher in the pigmented specimens (in contrast to what occurs in quartz), this suggests that the presence of the pigment favours genesis of a greater quantity of mullite. However, this effect is only confined to the first stages, since the straight lines display a high degree of parallelism.

Analysis of the reflections corresponding to the pigment indicates that when t_S increases the I_{100} reflection of the solid solution, in addition to diminishing intensity, shifts

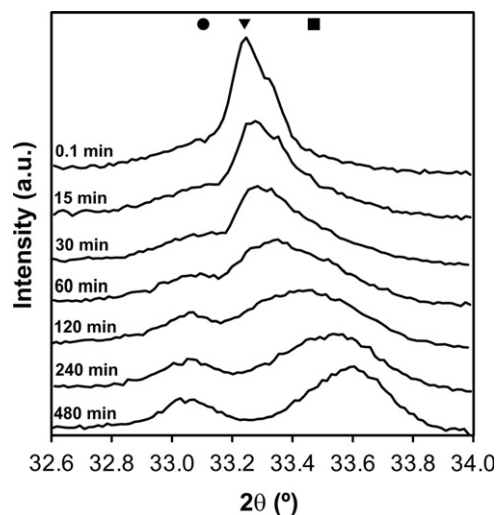


Fig. 7. Detail of the diffractograms corresponding to the main reflection area of the pigment (\circ pigment, \blacksquare Cr_2O_3 , \blacktriangle mullite).

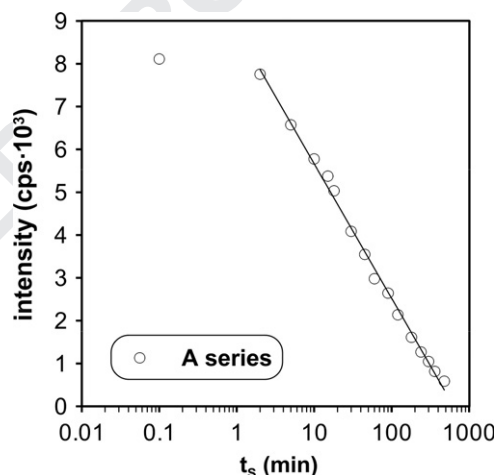


Fig. 8. Evolution of pigment reflection intensity I_{100} with t_S .

towards higher 2θ angles, even though a clearly defined new reflection does not develop (Fig. 7), as if the pigment structure approached that of pure Cr_2O_3 . The reflection deconvolution process shows, first, that the intensity of the I_{100} reflection of the solid solution decreases with t_S , approximately following a logarithmic trend (Fig. 8) similar to that exhibited by quartz and mullite. Secondly, the intensity corresponding to Cr_2O_3 increases with an approximately logarithmic trend up to a maximum at $t_S=120$ min and then decreases again, since the reflection shifts towards angle positions higher than that of Cr_2O_3 (Fig. 9). This finding was verified by subjecting pigment particles present in polished cross-sections of series “A” specimens to EDX microanalysis. Fig. 10 compares the atomic Fe/Cr and Al/Cr ratios of three specimens subjected to very different soaking times. It can be observed that the ratio between the Fe and Cr decreases as t_S increases, which confirms that the pigment particles become poorer in Fe, as suggested by the XRD results.

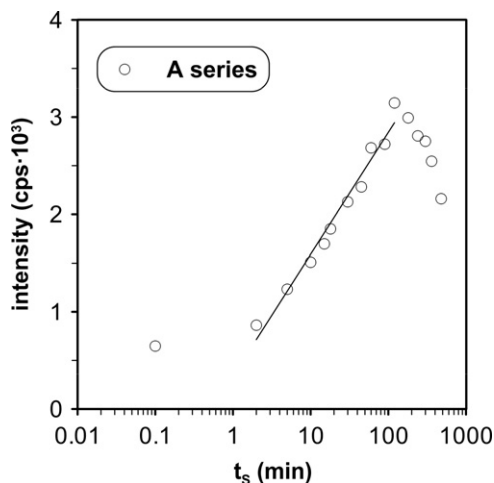


Fig. 9. Evolution of Cr_2O_3 reflection intensity I_{100} with t_s .

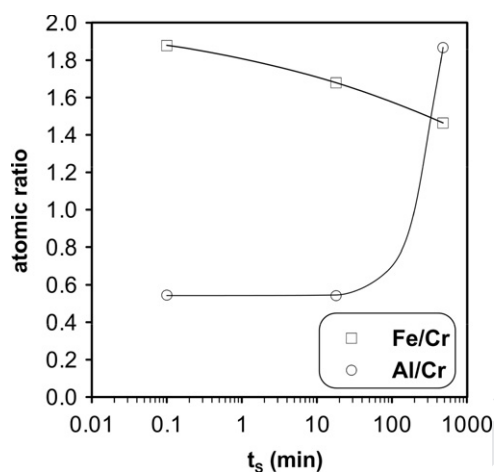


Fig. 10. Comparison of the EDAX signal in pigment particles in the fired porcelanised stoneware specimens at different t_s .

Moreover, Al detected by EDX could be assigned to the glassy phase present in the surrounding of the pigment particles, but its increase for the longest soaking time is probably caused by the incorporation of Al into the structure of the pigment, which is consistent with the evolution of the XRD reflections of the pigment.

The characteristic crystalline phases of the system studied (Fe_2O_3 – Cr_2O_3 solid solution, quartz and mullite) exhibit an approximately logarithmic type of evolution with soaking time at 1180°C , except for very short times (less than 2 min). This departure from the general trend is presumably because glassy phase formation is a gradual process, mainly since a certain time is required to achieve uniform temperature throughout the specimen volume. Initially (at very low t_s values) not enough glassy phase forms to allow complete contact with the crystalline particles present, which is consistent with the microstructure observed in the pieces (Fig. 2). Therefore, the dissolution and crystallization processes do not advance to the extent that would correspond to the operating temperature until a certain time after the furnace

has reached 1180°C . On the other hand, the fact that the evolution of the three crystalline phases displays a similar trend suggests that the same stage controls the rate of quartz dissolution, of mullite crystallization from the glassy phase, and of pigment alteration. Though the identification of this limiting stage is the focus of studies currently in course, the hypothesis may be advanced that this stage is diffusion of the different components through the highly viscous glassy phase located between the different crystalline particles.

The arising changes in the pigment during heat treatment can be interpreted as resulting from the preferential leaching of Fe_2O_3 from the pigment structure, owing to the interaction between the pigment and the glassy phase generated by the porcelanised stoneware, since Fe_2O_3 is much more soluble in siliceous glasses than Cr_2O_3 [15], thus causing the solid solution progressively to approach the Cr_2O_3 composition (the I_{100} positions were $33,153^\circ$ for hematite and $33,597^\circ$ for eskolaite according to the ICDD cards). As a complete solid solution forms in the entire range of compositions in the Fe_2O_3 – Cr_2O_3 system, instead of a well-defined crystalline structure which generates XRD reflections in specific angle positions, the increase in t_s produces a distribution of solid solutions of different composition, leading to a quite wide band instead of a clearly defined reflection. The band shift to a higher 2θ angle than the one corresponding to the I_{100} reflection of pure Cr_2O_3 is probably due to the incorporation of some alumina from the glassy phase into the solid solution, since an enrichment in aluminum has been detected in the pigment particles and corundum and Cr_2O_3 also form isostructural solid solutions in the whole range of compositions [16]. This would contribute further to the factors that prevent well-defined reflections corresponding to Cr_2O_3 from being obtained and, in particular, would cause the reflection to shift beyond the position corresponding to Cr_2O_3 , since the position of the corundum I_{100} reflection appears at a higher 2θ angle (I_{100} position at $35,153^\circ$, card 00-046-1212, Corundum, syn).

This pigment–porcelanised stoneware interaction mechanism also enables interpreting the notable development of the porosity mentioned in the previous section. The phenomenon can be attributed to the effect of the Fe_2O_3 extracted from the pigment. When this oxide dissolves in the glassy phase, in order to maintain the redox equilibrium between Fe_2O_3 and FeO, a part of the Fe_2O_3 is reduced to FeO, an oxide which acts as a flux in siliceous glasses, lowering the viscosity of the glassy phase and, therefore, favouring pore growth under pressure of the gases present in the pores. In addition, the oxygen released by the reduction would increase the volume of gases captured inside the pores of the porcelanised stoneware, encouraging further the rise in porosity.

3.3. Evolution of the chromatic coordinates

The color of the resulting pigmented and non-pigmented porcelanised stoneware specimens varies when t_s is modified,

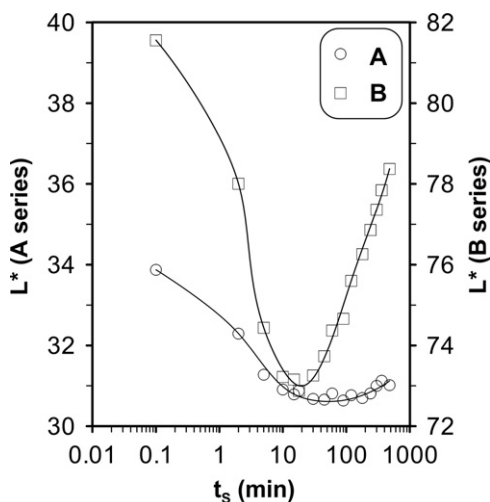


Fig. 11. Evolution of the chromatic coordinate L^* versus t_s of the two series of test specimens.

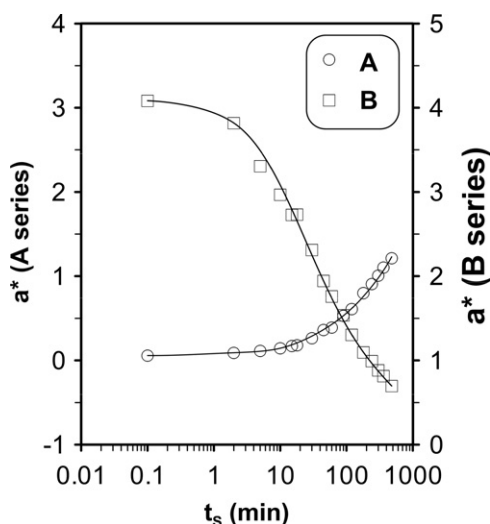


Fig. 12. Evolution of chromatic coordinate a^* versus t_s of the two series of test specimens.

as may be observed in the graphs that plot the chromatic coordinates as a function of t_s for the series A and B samples (Figs. 11–13). However, the pigment addition alters both the absolute value of the coordinates and their evolution with soaking time. The changes may be attributed to the interactions of light with the different phases present in the samples, i.e. mullite, quartz, glassy phase of variable composition and possibly the pigment, whose coloring characteristics also vary during heat treatment owing to the changes in pigment composition described above.

Porcelanised stoneware lightness (L^*) exhibits a pronounced minimum, presumably related to the maximum development of the glassy phase, since the opacifying effect of the crystalline phases would predominate at either short soaking times or long soaking times (in the former case involving mainly quartz, and in the latter mainly mullite). The incorporation of the pigment shifts the curve towards much lower L^* values and smoothes particularly the variations observed, owing to

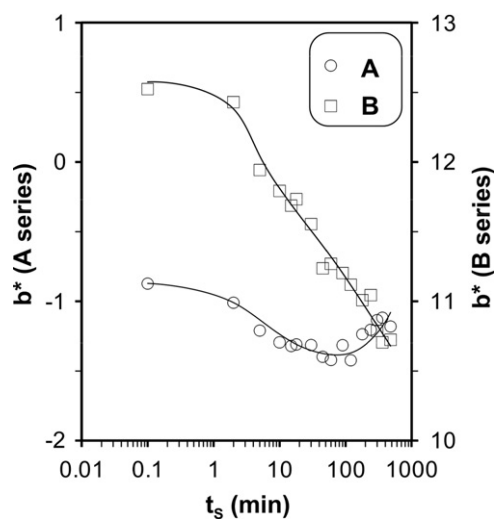


Fig. 13. Evolution of chromatic coordinate b^* versus t_s of the two series of test specimens.

the pigment's strong absorption of visible radiation. However, a much more moderate effect of the pigment is observed at lower values of t_s , since not enough glassy phase has developed in this case, nor has the glassy phase reached the maximum transparency required for optimum interaction between light and pigment. Despite the changes in pigment composition, the pigment generates a predominant black hue because the $(\text{Fe,Cr})_2\text{O}_3$ solid solution has this color in quite a wide range of compositions. As the pigment used in this study contained a larger quantity of Fe_2O_3 than Cr_2O_3 , when Fe_2O_3 partly dissolved in the glassy phase, enriching the pigment in Cr_2O_3 , the predominant black hue would be maintained.

The porcelanised stoneware a^* and b^* coordinates decrease as t_s increases, attenuating the moderately reddish and clearly yellowish shades obtained at short t_s . This may be attributed to the dissolution of coloring impurities (typically Ti and Fe compounds from the porcelanised stoneware raw materials) in the glassy phase, in which their effect on color is much more limited. The incorporation of the pigment completely alters these behaviors: the test specimens acquire a slightly bluish hue ($b^* < 0$), which remains practically invariable in the entire range of t_s analyzed, and they acquire a slightly reddish shade which increases when t_s increases. The change in the value of a^* can be interpreted as caused by the Fe_2O_3 which, extracted from the pigment and incorporated into the glassy phase, tends to develop reddish shades. However, these shades are not intense because the chromium-enriched residual pigment keeps its black color, probably with a green shade, therefore preventing high values of a^* from developing, and at the same time preventing variations in b^* .

4. Conclusions

The interaction of the $(\text{Fe,Cr})_2\text{O}_3$ black pigment with the glassy phase that forms during porcelanised stoneware firing produces important alterations in the composition of

the pigment and in the porcelanised stoneware microstructure when soaking times are long. At soaking times in the usual range for this type of product, the alterations are not particularly significant, except in color development.

Part of the Fe_2O_3 in the pigment is leached, which enriches the pigment in Cr_2O_3 , and Al_2O_3 is probably incorporated into the pigment from the glassy phase. Although the crystal structure of the pigment is not altered, solid solutions are generated in quite a wide range of compositions.

The most significant effect on porcelanised stoneware is a slight increase in mullite formation from the decomposition of the kaolinitic clays and, in particular, a notable increase in pore size at high soaking times, which may be attributed to the increased flowability of the glassy phase and the generation of oxygen from the incorporation of the leached Fe_2O_3 into the glassy phase.

References

- [1] K. Shaw, *Ceramic Colors and Pottery Decoration*, Maclaren, London, 1973.
- [2] F. Singer, S.S. Singer, *Industrial Ceramics*, Chapman and Hall, London, 1962.
- [3] R.A. Eppler, Cobalt-free black pigments, *American Ceramic Society Bulletin* 60 (1981) 562–565.
- [4] A. Muan, S. Somya, Phase relations in the system iron oxide– Cr_2O_3 in air, *Journal of the American Ceramic Society* 57 (1960) 204–209.
- [5] A. Escardino, S. Mestre, A. Barba, V. Beltrán, A. Blasco, Synthesis mechanism of an iron–chromium ceramic pigment, *Journal of the American Ceramic Society* 83 (2000) 29–32.
- [6] A. Escardino, S. Mestre, A. Barba, V. Beltrán, A. Blasco, Kinetic study of black Fe_2O_3 – Cr_2O_3 pigment synthesis: I, influence of synthesis time and temperature, *Journal of the American Ceramic Society* 86 (2003) 945–950.
- [7] A. Escardino, S. Mestre, A. Barba, C. Feliu, A. Blasco, V. Beltrán, Kinetic study of black $(\text{Fe,Cr})_2\text{O}_3$ pigment synthesis reaction: influence of composition and particle size, *British Ceramic Transactions* 102 (2003) 251–256.
- [8] C.J. Byrne, S.G. Kutney, R.A. Pipoly, The effect of glaze composition on the colour and stability of chrome tin pink pigments, *Ceramic Engineering and Science Proceedings* 15 (1994) 206–223.
- [9] A. Escardino, S. Mestre, C. Feliu, P. Jodar, L. Díaz, Stability of $(\text{Cr})\text{CaO} \cdot \text{SnO}_2 \cdot \text{SiO}_2$ pink pigment in ceramic frits, *British Ceramic Transactions* 101 (2002) 213–220.
- [10] V. Harisanov, R.S. Pavlov, I.T. Marinova, V. Kozhukharov, J.B. Carda, Influence of crystallinity on chromatic parameters of enamels coloured with malayaite pink pigments, *Journal of the European Ceramic Society* 23 (2003) 429–435.
- [11] A.M. Bernardin, Diffusion of Cr–Fe–Al–Zn pigment in a zirconia glaze, *Dyes and Pigments* 79 (2008) 54–58.
- [12] H. Yurdakul, S. Turan, E. Ozel, The mechanism for the colour change of iron chromium black pigments in glazes through transmission electron microscopy techniques, *Dyes and Pigments* 91 (2011) 126–133.
- [13] P.M.T. Cavalcante, M. Dondi, G. Guarini, M. Raimondo, G. Baldi, Colour performance of ceramic nano-pigments, *Dyes and Pigments* 80 (2009) 226–232.
- [14] V. Beltrán, C. Ferrer, V. Bagán, E. Sánchez, J. García, S. Mestre, Influence of pressing powder characteristics and firing temperature on the porous microstructure and stain resistance of porcelain tile, *Ceramica Acta* 8 (1996) 37–51.
- [15] J.R. Taylor, A.C. Bull, *Ceramics Glaze Technology*, Pergamon Press, Oxford, 1986.
- [16] E.M. Levin, C.R. Robbins, H.F. McMurdie, *Phase Diagrams for Ceramists, vol. 1*, The American Ceramic Society Inc., Columbus (Ohio, USA), 1964.