



OPEN ACCESS

EDITED BY
Hai Fang,
Peking University, China

REVIEWED BY
Renata Šmit,
Goethe University, Germany
Eduardo Fernandez,
University of Salamanca, Spain

*CORRESPONDENCE
João P. Martins
✉ jom@ess.ipp.pt

RECEIVED 08 February 2024
ACCEPTED 20 March 2024
PUBLISHED 10 April 2024

CITATION

Torres M, Nunes A, Martins JP, Ferreira PL and Pimenta R (2024) Health care expenses impact on the disability-adjusted life years in non-communicable diseases in the European Union.
Front. Public Health 12:1384122.
doi: 10.3389/fpubh.2024.1384122

COPYRIGHT

© 2024 Torres, Nunes, Martins, Ferreira and Pimenta. This is an open-access article distributed under the terms of the [Creative Commons Attribution License \(CC BY\)](https://creativecommons.org/licenses/by/4.0/). The use, distribution or reproduction in other forums is permitted, provided the original author(s) and the copyright owner(s) are credited and that the original publication in this journal is cited, in accordance with accepted academic practice. No use, distribution or reproduction is permitted which does not comply with these terms.

Health care expenses impact on the disability-adjusted life years in non-communicable diseases in the European Union

Margarida Torres¹, Alcina Nunes², João P. Martins^{1,3,4*}, Pedro L. Ferreira^{4,5} and Rui Pimenta^{1,4}

¹Escola Superior de Saúde, Instituto Politécnico do Porto, Rua Dr. António Bernardino de Almeida, Porto, Portugal, ²UNIAG, Instituto Politécnico de Bragança, Bragança, Portugal, ³CEAUL – Centro de Estatística e Aplicações, Faculdade de Ciências, Universidade de Lisboa, Lisbon, Portugal, ⁴Centre for Health Studies and Research of University of Coimbra, Centre for Innovative Biomedicine and Biotechnology, Coimbra, Portugal, ⁵Faculty of Economics, University of Coimbra, Coimbra, Portugal

Background: Non-communicable diseases are a global health problem. The metric Disability-Adjusted Life Years was developed to measure its impact on health systems. This metric makes it possible to understand a disease's burden, towards defining healthcare policies. This research analysed the effect of healthcare expenditures in the evolution of disability-adjusted life years for non-communicable diseases in the European Union between 2000 and 2019.

Methods: Data were collected for all 27 European Union countries from Global Burden of Disease 2019, Global Health Expenditure, and EUROSTAT databases. Econometric panel data models were used to assess the impact of healthcare expenses on the disability-adjusted life years. Only models with a coefficient of determination equal to or higher than 10% were analysed.

Results: There was a decrease in the non-communicable diseases with the highest disability-adjusted life years: cardiovascular diseases (–2,952 years/10⁵ inhabitants) and neoplasms (–618 years/10⁵ inhabitants). Health expenditure significantly decreased disability-adjusted life years for all analysed diseases ($p < 0.01$) unless for musculoskeletal disorders. Private health expenditure did not show a significant effect on neurological and musculoskeletal disorders ($p > 0.05$) whereas public health expenditure did not significantly influence skin and subcutaneous diseases ($p > 0.05$).

Conclusion: Health expenditure have proved to be effective in the reduction of several diseases. However, some categories such as musculoskeletal and mental disorders must be a priority for health policies in the future since, despite their low mortality, they can present high morbidity and disability.

KEYWORDS

health expenditure, health policy, disease burden, panel data, chronic diseases, public health expenditure, private health expenditure

Introduction

Burden disease is defined as the difference between a population's current state of health and the optimal state of health, where the whole population achieves a full life without suffering a major illness (1).

There are several methodologies to quantify the burden of disease. However, to be able to compare between countries, the most used measure is the Disability Adjusted Life Years (DALY) which is equal to the sum of years of life lost due to premature death (YLL) and years lived with disability (YLD) (2–4). Thus,

$$\text{DALY} = \text{YLL} + \text{YLD} \quad (1)$$

This work focuses on non-communicable diseases (NCD), known as chronic diseases, which tend to result from a combination of genetic, physiological, environmental, and behavioural factors (5, 6). According to the World Health Organization (WHO), their impact increased from 61% of global deaths in 2000 to 74% in 2019, causing 63% of DALYs in that year (compared to 47% in 2000). In Europe, NCD affects life expectancy and is responsible for 77% of the total disease burden (5, 7). The literature points to a more significant burden of cardiovascular diseases, neoplasms, chronic respiratory diseases (such as Chronic obstructive pulmonary disease and Asthma) and diabetes within NCD, accounting for more than 33 million deaths in 2019 (an increase of 28% compared to the year 2000), with at least 80% of all heart attacks, diabetes and strokes, and 40% of cancers could be prevented by monitoring the main risk factors - tobacco, alcohol, poor diet, physical inactivity and environmental factors (5, 6, 8).

NCDs were included in the WHO agenda for Sustainable Development 2030, with the goal of reducing the probability of death resulting from the four main diseases by one-third, for ages between 30 and 70 years, by 2030 (6). Moreover, the European Commission launched the *Healthier Together—EU Non-Communicable Diseases* initiative as a way of helping European Union (EU) countries to achieve that goal through the identification and implementation of effective policies and actions to reduce the burden of the NCD, which shows the topicality of this topic (7).

The economic consequences of NCDs significantly impact health care and decrease productivity. NCDs are the most significant cause of health expenditure (2).

Global Health Expenditure Database (GHED) is the largest international expense comparison database across almost 190 countries since its inception in 2000 (9). It includes financing source indicators such as current healthcare expenses (CHE), domestic general government health expenditures (GGHE-D), and domestic private expenditures (PVT-D), which include household out-of-pocket payments (OOP) (9). EU health systems vary in organisation and financing as their governance relies mainly on national legislation. However, ensuring universal access and delivering high-quality care at an affordable price for all citizens are recognised as essential societal needs as they are fundamental values and principles within the EU (10).

Therefore, the growing population ageing and the subsequent rise in demand for healthcare services present a significant challenge to the health economy (11, 12). Healthcare expenditures are a significant part of the national budgets of the EU countries. In 2020, it was equivalent to approximately 11% of the gross domestic product (13,

14). As disability becomes a large component of disease burden, it represents a high component of health expenditure and, in addition, there is also a loss of productivity and labour (7, 11).

It becomes crucial to anticipate trends and formulate adequate policies (11, 12). Thus, policymakers need to recognise the significance of DALYs as they reflect the disease burden that healthcare systems must effectively address. This highlights the importance of assessing the effect of these expenses in improving the health of EU citizens (15, 16). Healthcare expenditure is not the sole determinant of health outcomes such as DALYs. However, it plays a significant role in the accessibility, quality, and effectiveness of healthcare services, all of which ultimately influence population health outcomes. Thus, this research has two aims: to analyse the evolution of DALYs in NCDs and the health expenditures in the EU, and to evaluate the effect of health expenditures on the evolution of DALYs in NCDs.

Methods

Databases and variables

A multinational retrospective longitudinal study was performed. Data were collected for all 27 EU countries for the period 2000 to 2019, from 3 databases:

- Global Burden of Disease (GBD) 2019 for YLL and YLD and therefore for DALY, as described by Equation 1, related to communicable, maternal, neonatal and nutritional diseases (CMND), injuries (INJU), NCD and each NCD;
- GHED for health expenditure data;
- EUROSTAT database for population data (17).

Detailed descriptions of the health expenditure variables can be found in [Supplementary Table S1](#).

The collected YLL, YLD and DALY values were adjusted for a standardised age and for both sexes.

Statistical analysis

Data treatment was performed using STATA® (version 14.2) and Microsoft Excel® 365. First, an exploratory data analysis was carried out which included a weighted average of DALY and YLD, and some graphical representations. For a better analysis of expenditures within the private sector, private expenditure ($E_{P_{TV}}$) was generated by the difference between PVT-D and the out-of-pocket expenditure (E_{OOP}), and, for uniformity in the reading of the results, a logarithmization of the DALYs referring to each NCD was carried out in STATA®.

Secondly, an econometric panel data models were used to assess the impact of healthcare expenses on DALYs, through cross-sections (analysis of between countries in a given year) and chronological sequences (analysis of a country over the years). To avoid collinearity issues, the analysis was performed in two steps: the first step consisted in the analysis of fixed effects (FE) and random effects (RE) models for the DALYs of a NCD for country i at time t ($DALY_{it}$) with the total of health expenditures (E_{Tot}) as the single covariate. The FE model can be described by Equation 2,

$$DALY_{it} = \beta_0 + \beta_1 \times E_{Tot_{it}} + \mu_i + \varepsilon_{it} \quad (2)$$

Where β_0 is a constant, β_1 is the coefficient of the independent variable, μ_i are the country-specific effects that are assumed constant over time and verify $\sum_i \mu_i = 0$, and ε_{it} are the normal error terms. The

RE model is given by Equation 3,

$$DALY_{it} = \beta_0 + \beta_1 \times E_{Tot_{it}} + \alpha_i + \varepsilon_{it} \quad (3)$$

Where α_i stand for the country-specific effects that are now assumed to be normal random variables with null mean and equal variance, and ε_{it} are the normal error terms.

The second step was to consider as explanatory variables all possible combinations between E_{Pub} , E_{Prv} and E_{OOP} . Both FE and RE models were considered.

The option between the FE and RE models was based on the result of the Hausman test for a significance level of 5%. The BIC (Bayesian information criterion) was also used to obtain a parsimonious selection of independent variables (18–21). Only models with an overall coefficient of determination equal to or higher than 10% were analysed (22).

Results

Evolution of DALYs

The evolution of DALYs for NCD, CMND and INJ in the EU from 2000 to 2019 is detailed in Figure 1. The burden of NCDs is significantly higher than the burden of CMND or INJU since the minimum for NCDs (16,800 years per 10⁵ inhabitants in 2019) is more than five times greater than the maximum number of injuries (3350.28 years per 10⁵ inhabitants in 2018) and about ten times greater than the CMND maximum (1719 years per 10⁵ inhabitants in 2009).

Despite the tendency to maintain DALYs, the percentage of these due to YLD has changed. While the CMND and INJU had a decrease in the rate of YLD within the DALYs (50.14 to 38.85% and 49.28 to 37.64%, respectively), the NCDs show an increase in the burden of YLD within DALYs, rising from 41.45 to 54.46% (Figure 2).

When analysing the evolution of DALYs within NCDs (Figure 3), cardiovascular diseases presented the highest DALY values within NCDs. During the period under review, these diseases had a positive evolution with a decrease over time (maximum 5,502 years per 10⁵ inhabitants in 2002, and minimum 2,189 years per 10⁵ inhabitants in 2019).

Neoplasms were the second most impactful NCD, with recorded values exceeding 4,000 years per 10⁵ inhabitants during the initial three years under analysis, and in subsequent years these values consistently remained below that threshold.

Musculoskeletal and mental disorders and other NCDs change their position in terms of rank over time. However, all showed increasing values of DALYs. In 2019, mental disorders were the third NCD, followed by musculoskeletal disorders and other NCDs.

Neurological disorders is the sixth NCD with the most significant effect, with the lowest values in the first three years under analysis. The two highest records are found in the last decade (1,443 years per 10⁵ inhabitants in 2012 and 1,438 years per 10⁵ inhabitants in 2019), which indicates an upward trend.

Conversely, there has been a notable downward trend in the percentage of YLD (Figure 4) in diabetes and kidney diseases (maximum of 65.10% in 2000 and minimum 47.58% in 2019) and substance use disorders (maximum of 79.12% in 2003 and minimum 52.41% in 2010), while chronic respiratory diseases follow an increase in the percentage of YLD (minimum 41.43% in 2000 and maximum 57.22% in 2019). When analysing the variation in the rate of YLD between 2000 and 2019, these same diseases were the only ones with changes exceeding five percentage points.

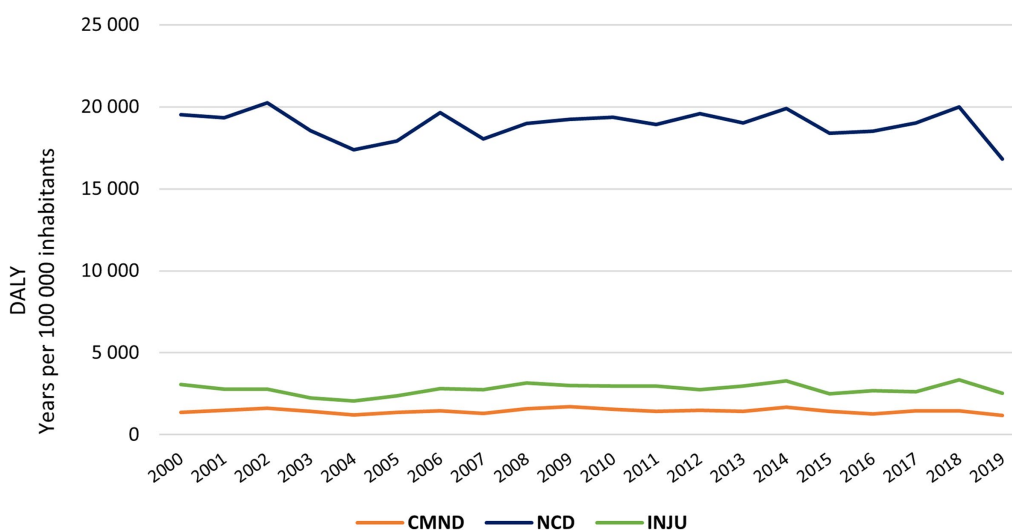


FIGURE 1 Evolution of DALYs for DNC, CMND and INJ in the EU from 2000 to 2019; CMND, communicable, maternal, neonatal and nutritional diseases; NCD, non-communicable diseases; INJU, injuries.

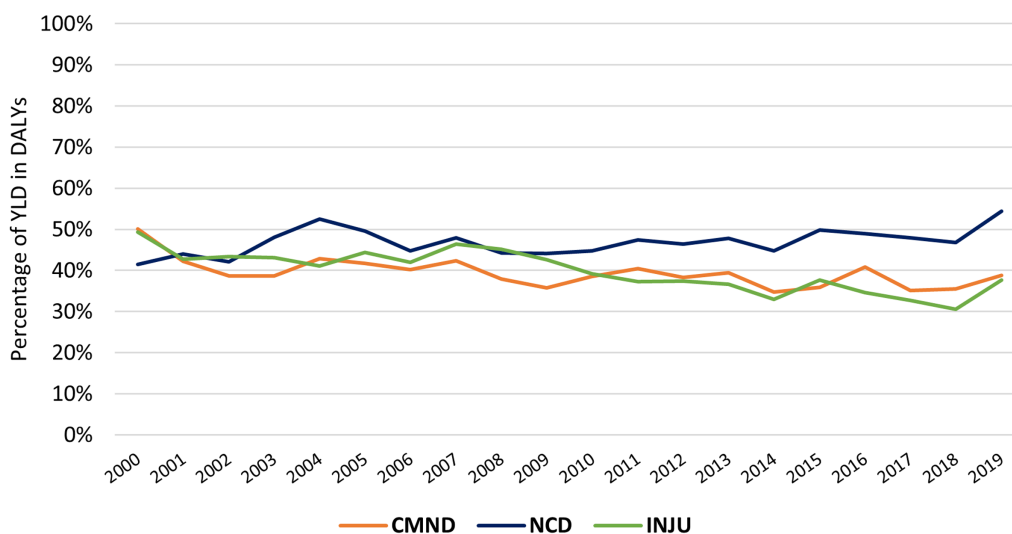


FIGURE 2 Evolution of the YLD percentage in DALYs for DNC, CMND and INJ in the EU from 2000 to 2019; CMND, communicable, maternal, neonatal and nutritional diseases; NCD, non-communicable diseases; INJU, injuries.

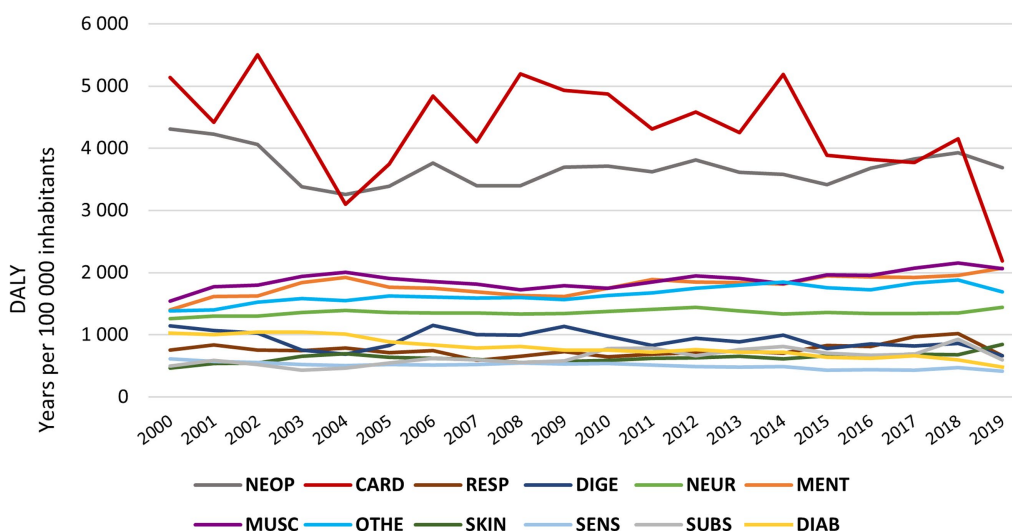


FIGURE 3 DALY's evolution by NCD in the EU from 2000 to 2019; NEO- neoplasm; CARD, cardiovascular disease; Resp., chronic respiratory disease; DIGE, digestive disease; NEUR, neurological disorders; MENT, mental disorders; MUSC, musculoskeletal disorders; OTHE, other non-communicable disease; SKIN, skin and subcutaneous disease; SENS, sense organ disease; SUBS, substance use disorders; DIAB, diabetes and kidney disease.

Health expenditures

The total of health expenditures (E_{Tot}), public and private, has increased since 2000 (6.90% of GDP), reaching the maximum value in 2009 (8.47% of GDP) and remaining above 8.00% until the end of the study period (cf. Figure 5). The maximum expenditure occurred in 2019 in Germany (11.70% of GDP), while the minimum was in 2000 in Romania (4.21% of GDP).

Public expenditure (E_{Pub}) was the E_{Tot} component with the most significant impact on health, its evolution over time was similar to the total growth. Thus, E_{Pub} attained its minimum in 2000 (5.04% of GDP) and its maximum in 2009 (6.18% of GDP), maintaining

approximately 6.00% of expenditure afterwards. When examining the data by country (Figure 6), significant variations in values were observed. Sweden, the country with the highest E_{Pub} , presented an expenditure of 9.28% of GDP in 2018 which is three times higher than Cyprus in the same period (2.88% of GDP in 2018).

On the other hand, private sector expenditures (Private expenditure (E_{Prv}) and out-of-pocket expenditure (E_{OOP})), had a similar evolution over time. On average, both types of expenditure reached their minimum recorded at the beginning of the period under study, although the maximum of E_{Prv} occurred in 2019 (0.60% of GDP) and of E_{OOP} in 2014 (1.78% of GDP). By country, the Netherlands had the highest E_{Prv} in 2017 (2.49% of GDP), while for

E_{OOP} , Bulgaria had the highest in 2012 (3.60% of GDP). The countries with the lowest E_{Prv} and E_{OOP} were, respectively, Slovakia in 2004 (0.003% of GDP) and Luxembourg in 2019 (0.52% of GDP).

In short, all health expenditures have an upward trend with stabilisation in the last decade. By analysing the typology of health expenditure (Figure 6), it is possible to observe that Cyprus was the only EU country with an E_{Pub} mean lower than 50% of E_{Tot} (being 46.27% of these expenditures by E_{OOP}), followed by Bulgaria and Latvia with an E_{OOP} higher than 40%. Most countries have an E_{Prv} and E_{OOP} lower than 30% (17 countries), thus there is a higher expenditure on health by public agencies. E_{OOP} represent more than 50% of non-public expenditure in most countries, with a median of almost 20% of E_{Tot} . France (9.15%), Netherlands (10.16%) and Luxembourg (11.65%) have the lowest percentages of E_{OOP} .

Panel data models

The panel data models were found to model the evolution of the DALYs of each NCD with E_{Tot} , as the only explanatory variables are detailed in Supplementary Table S2. Four of the NCDs presented a low overall r^2 (chronic respiratory disease, substance use disorders, diabetes and kidney disease and other non-communicable disease). Mental disorders despite an overall r^2 of more than 30%, did not present statistically significant for E_{Tot} . As for the other NCDs, all had a significant favourable evolution, except for musculoskeletal disorders, where, according to the fitted model, a 1% increase in E_{Tot} increased DALYs by 0.26%. The evolution was especially favourable in cardiovascular and digestive diseases.

To determine the effect of the expenditures E_{Pub} , E_{Prv} and E_{OOP} on the evolution of the DALYs of each NCD, panel data models were fitted for every combination of the explanatory variables. The most parsimonious model, according to the BIC criteria, was chosen and its parameters are presented in Table 1 (results for diseases with an overall r^2 less than 10% were omitted). Supplementary Table S3 shows the complete results.

Public health expenditure has a significant effect on all NCDs except for skin and subcutaneous diseases. However, in musculoskeletal disorders, the increase in public expenditure does not

have a positive impact on DALYs (a 1% increase in E_{Pub} increases its DALYs by 0.32%).

Upon analysing both the private and public sector expenses, it becomes clear that these expenses have a significant impact on NCDs, with cardiovascular diseases showing the coefficients with the greatest improvements for E_{Pub} (10.37%), E_{Prv} (45.32%) and E_{OOP} (18.54%). Comparing the types of expenditure, the impact of the increase in private sector expenditure (E_{Prv} and E_{OOP}), in percentage terms, always showed an expected variation greater than that of E_{Pub} , in all models.

Discussion

Evolution of DALYs

In this study, we assessed trends in DALYs and health expenditure across the 27 EU countries over 20 years (2000–2019), and analysed the effect of health expenditure in the DALYs evolution.

According to GBD 2019 Diseases and Injuries Collaborators (2020), with the increase in the sociodemographic index, there is an inversion of the burden from CMND to NCDs, where the contribution of YLD to DALYs becomes greater. This research also observed that NCDs present a more significant burden for health systems compared to CMND and injuries, as well as the trend of increasing disability, measured by YLD, for these diseases.

Despite the higher burden of NCDs, there was a maintenance of DALYs in the EU over time, through a downward trend in diseases such as cardiovascular and neoplasms and an upward trend for musculoskeletal and mental disorders. Daroudi et al. also observed a maintenance of DALYs for NCDs between 2000 and 2016 (worldwide), while Liu et al. observed a downward trend worldwide in DALYs for musculoskeletal disorders between 1990 and 2019 (23).

The drop of more than 1900 years per 10^5 inhabitants in cardiovascular diseases in 2019 should be carefully analysed since the mean in 2018 is lower than the three lower minimum values found for the same variable over the period analysed. This fall needs further studies and analysis in subsequent years.

Regarding the contribution of the YLD in the evolution of the DALYs, the NCDs have shown different performances. DALYs

TABLE 1 Most parsimonious panel data model for NCD DALYs by E_{Pub} , E_{Prv} , E_{OOP} .

	NEO	CARD	DIGE	NEUR	MUSC	SKIN	SENS
PDM	RE*	FE*	RE*	FE*	FE*	FE*	FE*
E_{Pub}^a	-2.99%* (-4.03,-1.95)	-10.37%* (-12.70,-8.05)	-4.35%* (-6.00,-2.69)	-0.34%* (-0.51,-0.16)	0.32%* (0.19,0.45)		-0.33%* (-0.47,0.20)
E_{Prv}^a	-7.14%* (-10.84,3.44)	-45.32%* (-53.75,-36.88)	-23.05%* (-29.01,-17.09)			-0.70%* (-1.01,-0.39)	-1.90%* (-2.40,1.41)
E_{OOP}^a	-6.25%* (-9.10,3.40)	-18.54%* (-25.14,-11.94)	-7.08%* (-11.70,-2.45)			-0.59%* (-0.82,-0.36)	-0.95%* (-1.34,-0.56)
Overall r^2	13.83%	46.82%	28.32%	18.05%	25.52%	13.31%	29.10%

PDM, Panel data model; E_{Pub} , Public expenditure on health; E_{Prv} , Private health expenditure without out-of-pocket payments; E_{OOP} , Private health expenditure in the form of out-of-pocket payments; RE, random effects model; FE, fixed effects model; NEO, neoplasm; CARD, Cardiovascular disease; DIGE, digestive disease; NEUR, neurological disorders; MUSC, Musculoskeletal disorders; SKIN, skin and subcutaneous disease; SENS, Sense organ disease; *Significant at a 1% level; ^acoefficient obtained in the most parsimonious panel data model according to the BIC criterion; 95% confidence intervals are presented in brackets.

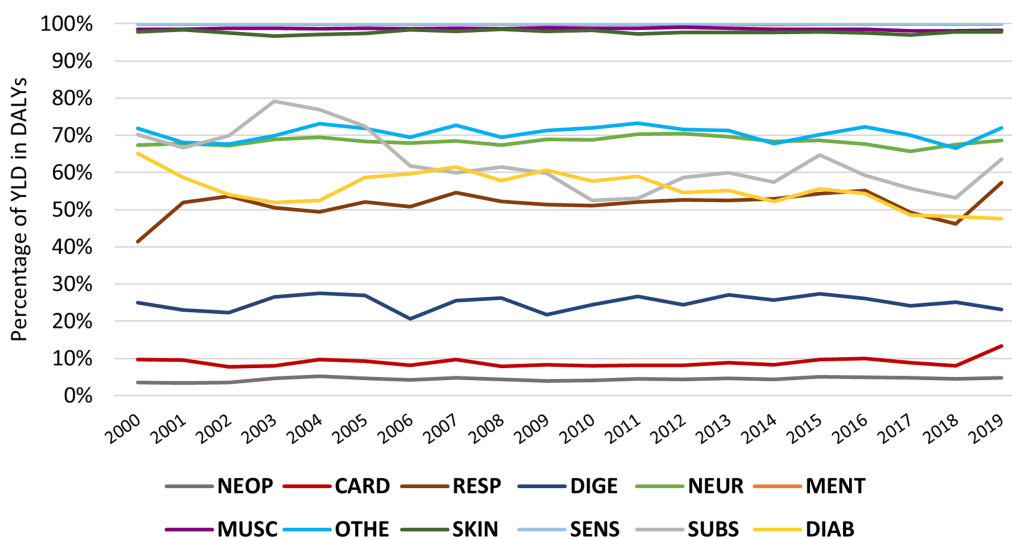


FIGURE 4
Evolution of YLD within DALYs by NCD in the EU from 2000 to 2019; NEO, neoplasm; CARD, cardiovascular disease; Respiratory chronic respiratory disease; DIGE, digestive disease; NEUR, neurological disorders; MENT, mental disorders; MUSC, musculoskeletal disorders; OTHE, other non-communicable disease; SKIN, skin and subcutaneous disease; SENS, sense organ disease; SUBS, substance use disorders; DIAB, diabetes and kidney disease.

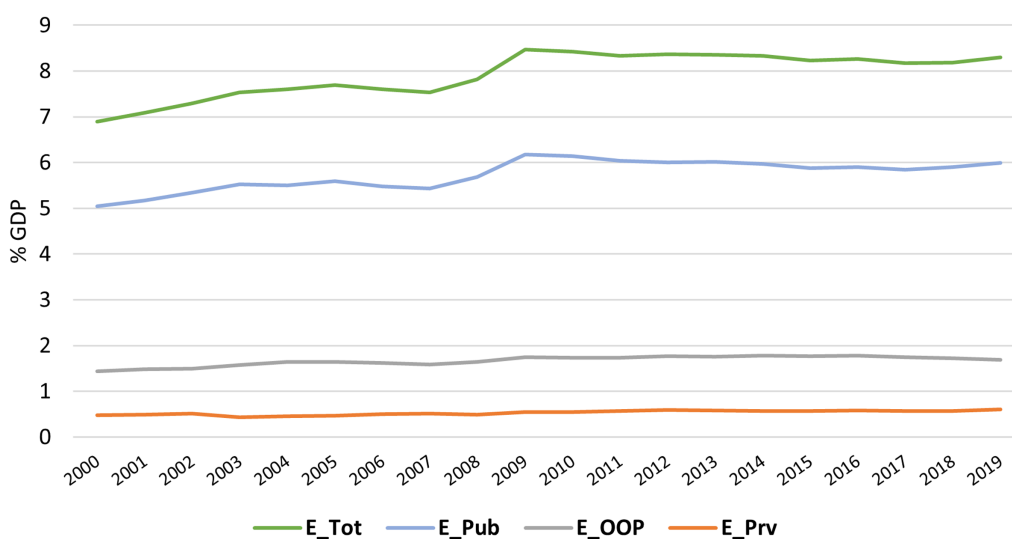


FIGURE 5
Evolution of Health Expenditure in the EU from 2000 to 2019; E_Tot, Total Health Expenditure; E_Pub, Public expenditure on health; E_Priv, Private health expenditure without out-of-pocket payments; E_OOP, Private health expenditure in the form of out-of-pocket payment.

concerning cardiovascular, digestive, and sensory organ diseases decreased, and the YLD percentage remained similar over time. DALYs due to diabetes and kidney disease fell, but the YLL percentage increased. On the other hand, skin and subcutaneous diseases, chronic respiratory diseases, other NCDs and neurological, musculoskeletal and mental disorders had a trajectory of increased DALYs with YLD percentage showing low variation. However, disorders due to substance use increased DALYs and decreased the YLD percentage. Thus, most NCDs maintain the percentage of DALYs components

over time, except for diabetes and kidney disease and disorders due to substance use, where there is an increase in premature deaths, and chronic respiratory diseases, with an increase in disability. Moreover, in the study by GBD 2019 Diseases and Injuries Collaborators, worldwide, an increase in YLL for disorders due to substance use was observed, justified by the inadequate prescription of opiates or fentanyl abuse. On the other hand, Kotwas et al., in a study in central Europe, observed an increase in DALYs for type 2 diabetes mellitus with an increase in YLDs (24).

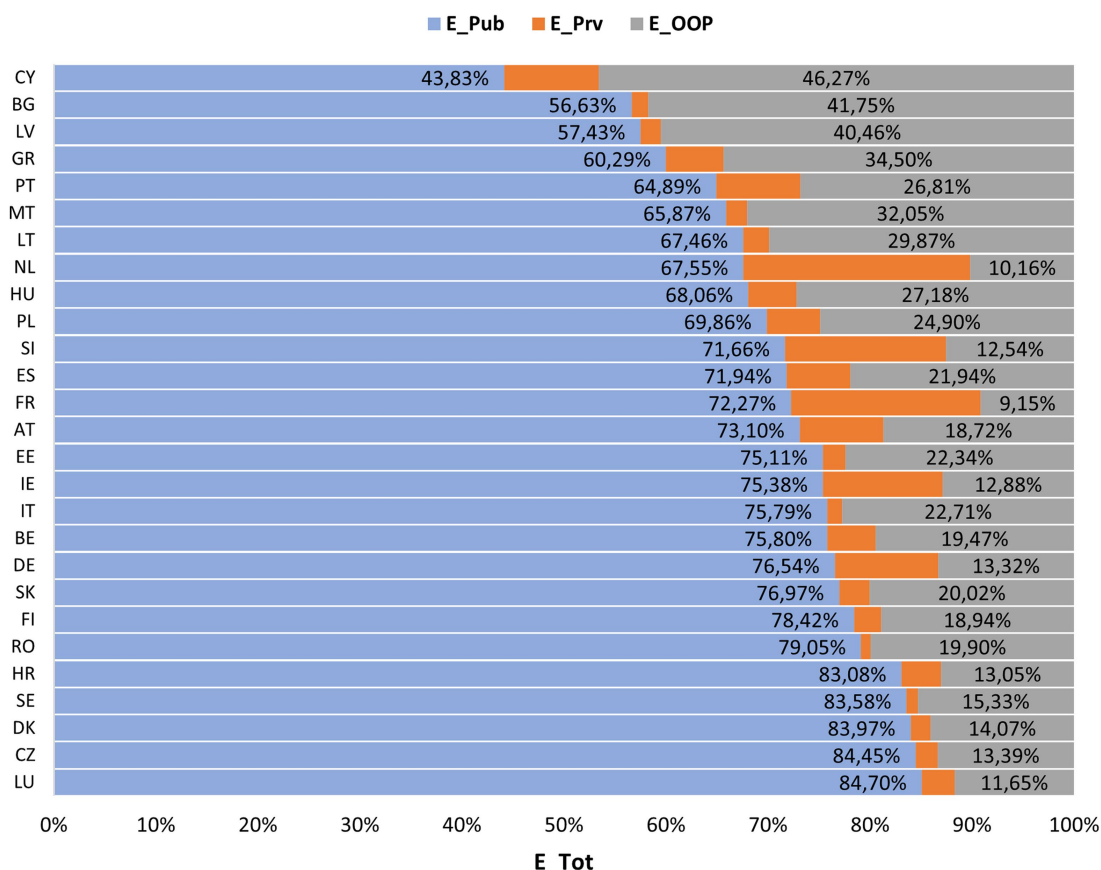


FIGURE 6
 Percentage ratio of public, private and OOP expenditures within total health expenditures by country. E_{Pub} - Public expenditure on health; E_{Prv} , Private health expenditure without out-of-pocket payments; E_{OOP} , Private health expenditure in the form of out-of-pocket payments; E_{Tot} , Total health expenditure; Germany (DE), Austria (AT), Belgium (BE), Bulgaria (BG), Czechia (CZ), Cyprus (CY), Croatia (HR), Denmark (DK), Spain (ES), Slovakia (SK), Slovenia (SI), Estonia (EE), Finland (FI), France (FR), Greece (GR), Hungary (HU), Ireland (IE), Italy (IT), Latvia (LV), Lithuania (LT), Luxembourg (LU), Malta (MT), Netherlands (NL), Poland (PL), Portugal (PT), Romania (RO) and Sweden (SE).

Healthcare expenditures policies in the EU

EU adhere to the principle of universal access to healthcare, which is achieved through compulsory funding for the public sector, and there is no country in the EU (and very few worldwide) in which the private sector is the only source of access to health (25). Therefore, in this study, all EU countries financed their health systems through the public and private sectors, where, on average, there was an upward trend in all types of expenditure over time, with E_{Pub} being the ones that most contribute to E_{Tot} , followed by E_{OOP} and E_{Prv} . Note that Cyprus was the only country with a E_{Pub} component below 50%, as in WHO et al., being the value justified by the inability of the Cypriot health system to cover 10% of the population, motivating a significant reform in the health system in 2019 (26).

Thus, public entities were the major funders of health systems in EU countries, reaching over 80% in Croatia, Sweden, Denmark, Czechia and Luxembourg.

Figure 5 shows a sudden increase in health expenditure in 2009. This increase, as described by OECD & European Commission (2020), is due to a contraction in GDP due to the 2008 financial crisis and not to increased funding for health.

Both this study and WHO et al. observed a higher burden with E_{OOP} compared to E_{Prv} , except in France, Slovenia and the Netherlands. These results may be due to its quick access, the provider's choice or better facilities provided by the private system. However, it also shows a deficit in the articulation of health subsystems and the private sector, since E_{OOP} are borne directly by users, withdrawing income or savings from households. In the EU, on average, 1/5 of total health expenditure is paid out-of-pocket, mainly for pharmaceutical, dental and other long-term healthcare services (26).

The effect of health expenditures on DALYs

The NCDs received, until 2019, a residual investment, mainly compared to the expenses in diseases such as AIDS, tuberculosis, malaria and neonatal, child and maternal health (27). However, it is estimated that a 1% increase in per capita health expenditure reduces DALYs for all causes by 0.24%, and in countries with a high development index [as in the 27 EU countries (28)] the decrease in DALYs reaches 0.27% (29). This highlights the importance of analysing the impact of the health expenditure (30) in the DALYs for

each category of disease as its potential benefit has been previously reported in other studies (31, 32). Our findings suggest that benefits regarding neoplasms, cardiovascular and digestive diseases are significantly higher than the estimated benefit of 0.27%, for all causes, estimated by Daroudi et al.

Most health expenditures are related to public organisations, reflecting fewer changes in DALYs compared to the private sector. All increases in E_{Prv} and/or E_{OOP} decrease the DALYs of NCDs, while the increase in E_{Pub} always shows less significant improvements compared to the private sector or even the increase in DALYs (as for musculoskeletal disorders). On the other hand, despite E_{OOP} , in most countries, being responsible for more than 50% of expenditures in the private sector, the health outcomes for increasing these expenditures are always lower than the results with increasing E_{Prv} .

Neurological disorders increased DALYs over time, however, only E_{Pub} significantly contributed to the decrease in their impact. Thus, a deeper private sector involvement should be considered in the future. Conversely, skin and subcutaneous diseases presented an increase in their DALYs and its evolution was only influenced by the private sector. A bigger contribution from the public sector would be important to face this increase.

Cardiovascular diseases showed the most significant effect on health systems through DALYs and simultaneously had the most favourable evolution when there was a 1% increase - in any health expenditure type - translating into a decrease in DALYs between 10 and 45%! These results show considerable attention to this pathology, justifying the downward DALY trend over time. Otherwise, musculoskeletal disorders showed the worst increasing trends for the period under study. As for the musculoskeletal, it was the only NCD in which the increase in E_{Tot} and/or E_{Pub} did not show positive results in the health of the population. Mental diseases showed a poor relation between DALYs and expenditures (overall r^2 equal to 1%). This result shows that investment, mainly public, is not responding to the needs of the population since, as advocated by GBD 2019 Diseases and Injuries Collaborators (2020), there is little development of strategies for these diseases, given the low mortality (main focus of health policies at a global level). Singh et al., in southeast Asia, found better results with public expenditure, compared to private expenditure: a 1% increase in public expenditure reduced NCD mortality by 0.6%, while private expenditure increased mortality by 0.15% (33).

Several studies have already addressed the problem of assessing the impact of healthcare expenditure on health outcomes (e.g., mortality rate) (15, 16, 22, 33). However, to our knowledge, this is the first study in which the health outcome of interest are DALYs and it is important to conduct further research in this area.

Limitations

This study had some limitations. Firstly, the study was designed as a second analysis of GBD data, and its limitations have already been published (such as the availability of primary data and the case definition or measurement method). Secondly, only the main categories of diseases within the NCDs were analysed without considering each disease, which may bias the results. Thirdly, only health expenditures were analysed as contributing to the DALYs, and the literature points to a multifactorial impact [risk factors such as poor diet, obesity and high blood (33, 34); socioeconomic and demographic structure of the populations and health inequalities

(12)]. This is particularly clear in the cases where models have a very low overall coefficient of determination r^2 (e.g., mental disorders). Finally, the study did not consider the typology of health systems within the EU, relying only on definitions of health expenditure.

Conclusion

The strategic plans implemented in cardiovascular diseases and neoplasms have yielded positive outcomes since the funding invested is associated with a more significant reduction in DALYs, with repercussions in improving the population's health over time. Conversely, musculoskeletal must be a priority for health policies in the future since, despite their low mortality, they present high morbidity and disability, associated with an increasing evolution over time have a significant economic impact on society.

Data availability statement

The original contributions presented in the study are included in the article/[Supplementary material](#), further inquiries can be directed to the corresponding author.

Author contributions

MT: Writing – original draft. AN: Writing – review & editing. JM: Writing – review & editing. PF: Writing – review & editing. RP: Writing – review & editing.

Funding

The author(s) declare that no financial support was received for the research, authorship, and/or publication of this article.

Conflict of interest

The authors declare that the research was conducted in the absence of any commercial or financial relationships that could be construed as a potential conflict of interest.

Publisher's note

All claims expressed in this article are solely those of the authors and do not necessarily represent those of their affiliated organizations, or those of the publisher, the editors and the reviewers. Any product that may be evaluated in this article, or claim that may be made by its manufacturer, is not guaranteed or endorsed by the publisher.

Supplementary material

The Supplementary material for this article can be found online at: <https://www.frontiersin.org/articles/10.3389/fpubh.2024.1384122/full#supplementary-material>

References

1. WHO. *Health Promotion Glossary of Terms 2021*. Geneva: World Health Organization (2021).
2. Hunter D, Reddy S. Noncommunicable Diseases. *N Engl J Med*. (2013) 369:1336–43. doi: 10.1056/NEJMra1109345
3. Boutayeb A, Boutayeb S. The Burden of non communicable diseases in developing countries. *Int J Equity Health*. (2005) 4:2. doi: 10.1186/1475-9276-4-2
4. WHO. *WHO methods and data sources for global burden of disease estimates 2000–2019. Global Health Estimates Technical Paper*. Geneva: Department of Data and Analytics (2020).
5. WHO. *World Health Statistics 2023: Monitoring health for the SDGs Sustainable Development Goals*. Geneva: World Health Organization (2023).
6. WHO. Fact sheets. (2022). Noncommunicable diseases. Available from: <https://www.who.int/news-room/fact-sheets/detail/noncommunicable-diseases>
7. European Commission. *Healthier Together– European Union Non-Communicable Diseases Initiative*. Luxembourg: Publications Office of the European Union (2022).
8. Orhan R, Paric M, Czabanowska K. Lessons learnt from the eu response to ncds: A content analysis on building resilient post-covid health systems. *Healthcare (Switzerland)*. (2021) 9:1–14. doi: 10.3390/healthcare9121659
9. WHO. *Methodology for the updated of the Global Health Expenditure Database 2000–2020*. World Health Organization. (2022).
10. Eurostat. Statistics Explained. (2022) [cited 2023 Jun 3]. Healthcare expenditure statistics. Available from: https://ec.europa.eu/eurostat/statistics-explained/index.php?title=Healthcare_expenditure_statistics
11. GBD 2019 Diseases and Injuries Collaborators. Global burden of 369 diseases and injuries in 204 countries and territories, 1990–2019: a systematic analysis for the Global Burden of Disease Study 2019. *Lancet*. (2020) 396:1204–22. doi: 10.1016/S0140-6736(20)30925-9
12. Andrade CAS, Mahrouseh N, Gabrani J, Charalampous P, Cuschieri S, Grad DA, et al. Inequalities in the burden of non-communicable diseases across European countries: a systematic analysis of the Global Burden of Disease 2019 study. *Int J Equity Health*. (2023) 22:140. doi: 10.1186/s12939-023-01958-8
13. Eurostat. (2022). Statistics Explained. Healthcare expenditure statistics. Available from: https://ec.europa.eu/eurostat/statistics-explained/index.php?title=Healthcare_expenditure_statistics#Healthcare_expenditure
14. Eurostat. Statistics Explained. (2023). Health care expenditure by function. Available from: https://ec.europa.eu/eurostat/databrowser/view/hlth_sha11_hc/default/table?lang=en
15. Moler-Zapata S, Kreif N, Ochalek J, Mirelman AJ, Nadjib M, Suhrcke M. Estimating the Health Effects of Expansions in Health Expenditure in Indonesia: A Dynamic Panel Data Approach. *Appl Health Econ Health Policy*. (2022) 20:881–91. doi: 10.1007/s40258-022-00752-x
16. Gloria MAJ, Thavorncharoensap M, Chaikledkaew U, Youngkong S, Thakkinstian A, Chaiyakunapruk N, et al. Systematic review of the impact of health care expenditure on health outcome measures: implications for cost-effectiveness thresholds. *Expert Rev Pharmacoecon Outcomes Res*. (2024) 24:203–15. doi: 10.1080/14737167.2023.2296562
17. Eurostat. Demography, population stock and balance. (2023). Available from: <https://ec.europa.eu/eurostat/databrowser/explore/all/popul?lang=en&subtheme=dem&o&display=list&sort=category>
18. Neath AA, Cavanaugh JE. The Bayesian information criterion: Background, derivation, and applications. *Wiley Interdiscip Rev Comput Stat*. (2012) 4:199–203. doi: 10.1002/wics.199
19. Baltagi BH. *Econometric Analysis of Panel Data*. 6th ed. Switzerland: Springer (2021).
20. StataCorp. *STATA Longitudinal-Data/Panel-Data reference manual 17*. 17th ed. Texas: Stata Press (2021).
21. Marques LD. *Modelos Dinâmicos com Dados em Painel: revisão de literatura*. Porto: Faculdade de Economia do Porto (2000).
22. Rad EH, Vahedi S, Teimourizad A, Esmaeilzadeh F, Hadian M, Pour AT. Comparison of the effects of public and private health expenditures on the health status: A panel data analysis in eastern mediterranean countries. *Int J Health Policy Manag*. (2013) 1:163–7. doi: 10.15171/ijhpm.2013.29
23. Liu S, Wang B, Fan S, Wang Y, Zhan Y, Ye D. Global burden of musculoskeletal disorders and attributable factors in 204 countries and territories: a secondary analysis of the Global Burden of Disease 2019 study. *BMJ Open*. (2022) 12:e062183. doi: 10.1136/bmjopen-2022-062183
24. Kotwas A, Karakiewicz B, Zabielska P, Wieder-Huszla S, Jurczak A. Epidemiological factors for type 2 diabetes mellitus: evidence from the Global Burden of Disease. *Arch Public Health*. (2021) 79:110. doi: 10.1186/s13690-021-00632-1
25. Sagan A, Thomson S. *Voluntary health insurance in Europe: role and regulation*. Copenhagen, Denmark: European Observatory on Health Systems and Policies (2016). Available from: <https://pubmed.ncbi.nlm.nih.gov/28825784/>
26. OECD, European Commission. *Health at a Glance: Europe (2020)*. State of Health in the EU Cycle [Internet]. Paris: OECD Publishing; 2020. (Health at a Glance: Europe). Available from: https://www.oecd-ilibrary.org/social-issues-migration-health/health-at-a-glance-europe-2020_82129230-en
27. Micah AE, Bhangdia K, Cogswell IE, Lasher D, Lidral-Porter B, Maddison ER, et al. Global investments in pandemic preparedness and COVID-19: development assistance and domestic spending on health between 1990 and 2026. *Lancet Glob Health*. (2023) 11:e385–413. doi: 10.1016/S2214-109X(23)00007-4
28. United Nations Development Programme. *Human Development Report 2021/2022*. United States: United Nations (2022). Available from: <https://www.unilibrary.org/content/books/9789210016407>
29. Daroudi R, Akbari Sari A, Nahvijou A, Faramarzi A. Cost per DALY averted in low, middle- and high-income countries: evidence from the global burden of disease study to estimate the cost-effectiveness thresholds. *Cost Effectiveness and Resource Allocation*. (2021) 19:260. doi: 10.1186/s12962-021-00260-0
30. Murray CJL, Frenk J. A framework for assessing the performance of health systems. *Bull World Health Organ*. (2000) 78:717–31.
31. Ciccone DK, Vian T, Maurer L, Bradley EH. Linking governance mechanisms to health outcomes: A review of the literature in low- and middle-income countries. *Soc Sci Med*. (2014) 117:86–95. doi: 10.1016/j.socscimed.2014.07.010
32. Mays GP, Smith SA. Evidence links increases in public health spending to declines in preventable deaths. *Health Aff*. (2011) 30:1585–93. doi: 10.1377/hlthaff.2011.0196
33. Singh S, Bala MM, Kumar N. The dynamics of public and private health expenditure on health outcome in Southeast Asia. *Health Soc Care Community*. (2022) 30:e2549–58. doi: 10.1111/hsc.13698
34. Bikbov B, Perico N, Remuzzi G. Mortality landscape in the Global Burden of Diseases, Injuries and Risk Factors Study. *Eur J Intern Med*. (2014) 25:1–5. doi: 10.1016/j.ejim.2013.09.002
35. Institute for Health Metrics and Evaluation (IHME). WA: IHME. Seattle: University of Washington (2020).
36. WHO. *Global Health Expenditure Database*. (2021). Available from: <https://apps.who.int/nha/database/Select/Indicators/en>