

## Short Communication

Intoxication with *Ornithogalum arabicum* is a potential cause of visual impairment and irreversible blindness in dogs<sup>☆</sup>Inge J.M. Slenter<sup>a,\*</sup>, Sylvia C. Djajadiningrat-Laanen<sup>a</sup>, Irma de Vries<sup>b</sup>, Marieke A. Dijkman<sup>b</sup><sup>a</sup> Ophthalmology Section, Department of Clinical Sciences of Companion Animals, Utrecht University, the Netherlands<sup>b</sup> Dutch Poisons Information Centre (DPIC), University Medical Centre Utrecht, Utrecht University, the Netherlands

## ARTICLE INFO

## Keywords:

*Ornithogalum arabicum*  
Cardiac glycosides  
Retinal degeneration  
Blindness

## ABSTRACT

We describe two dogs with persistent visual impairment after initially mild intoxication signs following ingestion of *Ornithogalum arabicum* plant material. Additionally, a 12-year analysis of the Dutch Poisons Information Centre database additionally reveals that ingestion of *Ornithogalum* plant material can be potentially life-threatening to companion animals. Further studies are necessary to confirm the involvement of cardiac glycoside-like toxins present in *Ornithogalum arabicum* and the toxicity of these substances to the retina.

## 1. Introduction

The genus *Ornithogalum* native to Africa, Europe and Asia, comprises approximately 150–200 species (Plančić et al., 2014). Several Southern African species are considered extremely toxic and are known to cause poisoning of livestock (Wink and Van Wyk, 2008). Acute poisoning is characterized by cardiac arrhythmia, runs of tachycardia, heart-block, dyspnoea, posterior paresis, and diarrhoea (Botha et al., 2000). Involvement of cardiac glycoside-like substances is suspected, as two toxicological important Southern African species, *O. nanodes* and *O. toxicarium*, cross-reacted with digoxin antibodies when tested for cardiac glycosides by fluorescence polarization immune-assay (Bamhare, 1998; Botha et al., 2000). Also several cardiac glycosides of the cardenolide type, e.g. convallatoxin and convalliosid, have been identified in *O. nutans* (Ferth et al., 1992), *O. boucheanum* (Ghannamy et al., 1987) and *O. umbellatum* (Ferth and Kopp, 1992), most notably in the bulb. Additionally, in the 1950s, the digitalis-like action of *O. umbellatum* on the heart was investigated, (Waud, 1954) leading to a limited clinical trial involving two patients with tablets prepared from *O. umbellatum*. (Vogelsang, 1955) Some species are known to contain phytochemicals other than cardiac glycosides that are responsible for severe intoxications. For example, *O. thyrsoides* (Fig. 1A) contains cholestane glycosides and saponins (Plančić et al., 2014). After ingestion, this species induces gastro-enteritis with severe persistent watery diarrhoea and liver degeneration in sheep (Breukink, 1963). Calcium oxalate crystals are held responsible for contact dermatitis seen in *O. caudatum* (Pohl, 1965). Nowadays several *Ornithogalum* species are held for ornamental purposes, as garden plants and/or cut flowers. Intoxications in humans and companion

animals (i.e. dogs and cats) are rare but do occur. Here we present two suspected *Ornithogalum arabicum* (Fig. 1B) intoxications in dogs resulting in minor gastro-intestinal symptoms and subacute blindness. Additionally, we provide a 12-year retrospective overview of all veterinary information requests concerning *Ornithogalum* species to the Dutch Poisons Information Centre (DPIC).

## 2. Case descriptions and DPIC overview

Case 1: A 4-month-old otherwise healthy female Labrador Retriever pup (9 kg) was referred to the Ophthalmology service of the Faculty of Veterinary Medicine in The Netherlands after the owners noticed a sudden loss of vision starting less than one day ago.

Medical history revealed that the dog was seen playing with *Ornithogalum arabicum* bulbs. Three weeks prior to the loss of vision one bulb had been retrieved out of the pup's mouth. After this incident it vomited once. Two weeks later the owners noticed some redness and discharge in both eyes. These signs resolved spontaneously a day later. Repeated ingestion of bulbs was suspected as compost containing many *O. arabicum* bulbs was used as fertilizer on several gardens in the neighbourhood, including the garden of the dog owner. The owner mentioned that other people in his neighbourhood also reported functional vision losses in their dogs. The previous Labrador retriever pup (10 weeks old) of the same owners was euthanised two months earlier because of its poor clinical condition due to severe haemorrhagic diarrhoea. According to the owners, this pup had acutely gone blind as well and had access to *O. arabicum* bulbs.

<sup>☆</sup> This research did not receive any specific grant from funding agencies in the public, commercial, or not-for-profit sectors.

\* Corresponding author. Postbus 80154, 3508, TD, Utrecht, the Netherlands.

E-mail address: [i.j.m.slenter@uu.nl](mailto:i.j.m.slenter@uu.nl) (I.J.M. Slenter).



Fig. 1. 1A: *Ornithogalum thyroides*. 1B: *Ornithogalum arabicum*.

Upon ocular examination of the presented pup, both pupils were dilated. Direct and consensual pupillary light reflexes, menace response and dazzle reflex were absent in both eyes. Ophthalmoscopy revealed moderate diffuse hyperreflectivity of the tapetal area of the fundus. The retinal changes were not bilaterally symmetrical. The optic nerve head in both eyes was slightly elevated and had a normal pinkish white colour. Diameters of the retinal blood vessels seemed normal. Intraocular pressures were below reference range (right eye: 4 mmHg, left eye: 3 mmHg)(Knollinger et al., 2005). No treatment was started. At follow up by telephone consultation the owners stated that the puppy had been unable to adjust to the blindness and was therefore euthanised two months after visiting the Ophthalmology service.

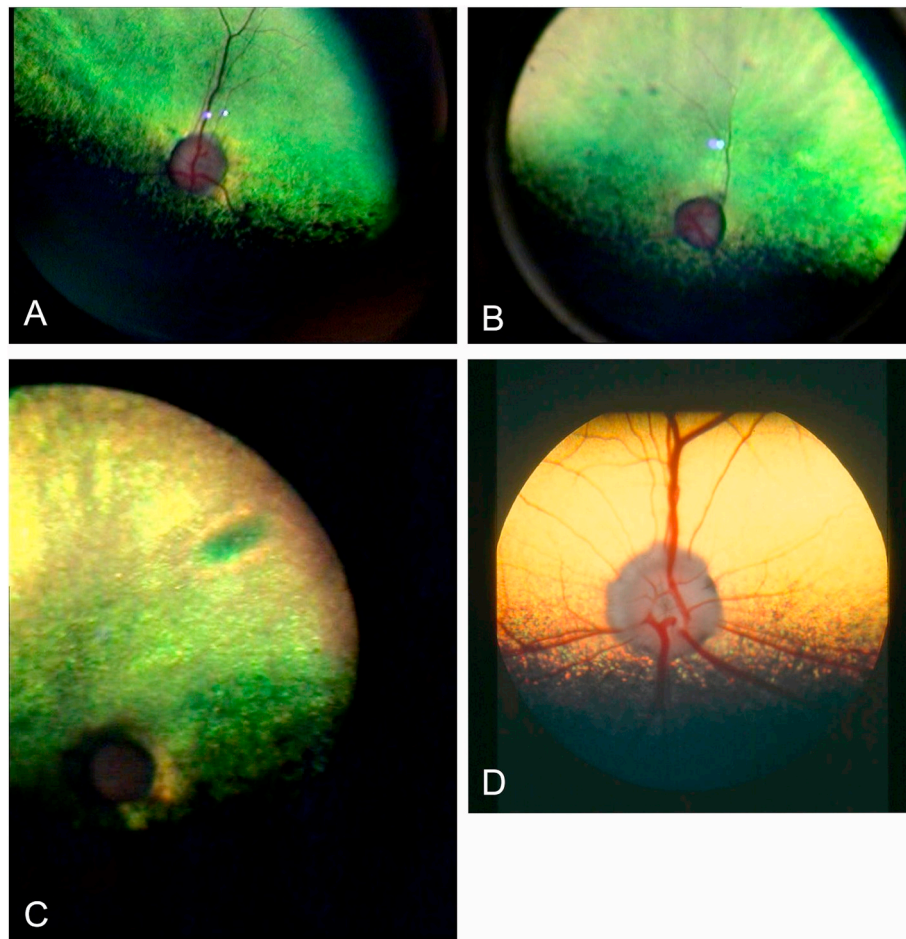
Case 2: A two-year-old otherwise healthy female Dachshund (5.8 kg) was referred to the Ophthalmology service after the owners noticed a sudden onset of blindness starting approximately one week earlier. After careful history taking, the owners remembered that the dog had been playing with an *Ornithogalum arabicum* plant approximately three weeks earlier (two weeks prior to the observed loss of vision). Immediately after plant exposure, the dog had vomited once and had watery diarrhoea for the following three days. Ocular examination revealed fully dilated pupils. Menace response and dazzle reflex were absent, while the direct pupillary light reflex was absent in the left eye and sluggish and incomplete in the right eye. Ophthalmoscopy revealed diffuse hyperreflectivity of the tapetal area, pallor of the optic nerve head and attenuation of the retinal blood vessels. The retinal changes were not bilaterally symmetrical, the left eye was more severely affected than the right eye (Fig. 2A–B). Asymmetry was also noticed during chromatic pupillary light reflex testing for evaluation of the contributions to the pupillary light reflex of photoreceptor cells (sensitive to red light) and intrinsically photosensitive retinal ganglion cells (sensitive to blue light)(Grozdanic et al., 2013). On exposure to red light there was no pupillary constriction in the left eye and only a minor pupillary constriction in the right eye. In response to blue light stimulation, however, the pupils of both eyes constricted briskly. Intraocular pressures were within reference range (right eye: 14 mmHg, left eye: 16 mmHg) (Knollinger et al., 2005). No treatment was started. At 6-month follow-up the owners had noticed improvement in the visual behaviour of the dog in the home environment. Outside, however, the dog was still bumping into things.

Functional vision was tested in an obstacle course in bright as well as dimmed light. In both light conditions the dog bumped into the obstacles. Ophthalmoscopic examination of the left eye revealed advanced retinal degeneration, with a pale and flattened optic nerve head, indiscernible retinal blood vessels and severe diffuse hyperreflectivity of the tapetal area (Fig. 2C). The retinal blood vessels of the right eye were severely attenuated but still distinguishable. Chromatic pupillary light testing revealed absent responses to red light and positive responses to blue light in both eyes.

The DPIC database was searched retrospectively from 2007 to 2018 using the search term “*Ornithogalum*” combined with “acute or chronic exposure”. The available information, (audiotape and/or written) of each case was analysed. Only veterinary cases with witnessed exposure were included. A total of 13 information requests involving 12 dogs (including case 1), and two cats were found. In 38% of the requests the *Ornithogalum* species was specified; *O. arabicum* (one dog), and *O. saundersiae* (four dogs). Cats were predominantly exposed to the upper ground parts (stems, leaves, and flowers) while dogs were apparently more attracted to the bulbs. Predominantly young animals ( $n = 7$ ; 0–1 year, all dogs) were exposed. Veterinary consultations to the DPIC were mostly made by the time the animals were symptomatic (12 out of 14). Time between exposure and consultation was known in 11 cases with a median delay of 12 h (range: 4–504). Many animals experienced severe gastrointestinal signs and some were lethargic. Visual dysfunction was noted in two dogs (including case 1) and one cat. An irregular heartbeat was observed in one dog (Table 1). Information on the clinical outcome was available for cases 12, 13, and 14. These dogs died shortly after the DPIC had been consulted by the veterinarian.

### 3. Discussion

Transient to permanent blindness due to *Ornithogalum* intoxication has been previously reported in cattle in southern Africa.(Botha and Penrith, 2008) This is, as far as the authors know, the first description of retinal degeneration and blindness following *Ornithogalum arabicum* ingestion in dogs. Additional reports of visual disturbances were found in the DPIC database with one other dog and one cat exposed to unspecified *Ornithogalum* species. Other reported clinical signs were



**Fig. 2.** A: Right eye of case 2 at initial presentation. B: Left eye of case 2 at initial presentation. Note the attenuation of retinal blood vessels and changes in reflectivity (hyperreflectivity) of the tapetal area (yellow-green area). C: Left eye of case 2 at 6-month follow-up. Note the complete absence of retinal blood vessels and marked hyperreflectivity of the tapetal area. D: Normal canine retina as reference image. The yellow colour of the tapetum is a normal variation in palette. (For interpretation of the references to colour in this figure legend, the reader is referred to the Web version of this article.)

primarily severe gastro-intestinal disturbances, as well as an irregular heartbeat. At least three dogs died shortly after ingestion of *Ornithogalum* plant material.

As for many *Ornithogalum* species, there is no information available concerning toxins present in the Eurasian *Ornithogalum arabicum*. Some *Ornithogalum* species contain cardiac glycosides of the cardenolide type.

Next to the well-known effects on the heart, cardiac glycosides also affect other organ systems such as the gastrointestinal, neurological and visual system. They inhibit the  $\text{Na}^+, \text{K}^+$ -ATPase ion pump found in the cell membrane of all mammalian cells, including retinal cells and the non-pigmented epithelial cells of the ciliary body (Katz et al., 2015). The presence of cardiac glycosides could explain the visual impairment seen

**Table 1**

Retrospective overview of veterinary information requests to the Dutch Poisons Information Centre (DPIC) concerning exposure to *Ornithogalum* species, 2007–2018 (n = 14).

No.	Animal species	Ornithogalum species	Time after exposure	Signs
1	Dog	unknown	unknown	no signs mentioned
2	Cat	unknown	unknown	Signs not specified
3	Cat	unknown	24 h	weakness, nystagmus, abnormal pupillary light reflex, blindness
4	Dog	<i>O. saundersiae</i>	24 h	(persistent) vomiting
5	Dog	unknown	± 7 h	(persistent) vomiting, anorexia
6	Dog	unknown	± 12 h	(persistent) vomiting, depression
7	Dog	unknown	48 h	abdominal pain, diarrhoea, lethargy, irregular heartbeat, bradycardia, mydriasis
8	Dog	<i>O. saundersiae</i>	4 h	(persistent) vomiting, anorexia
9	Dog	<i>O. saundersiae</i>	24 h	hematemesis, bloody diarrhoea, unspecified liver and kidney dysfunction
10	Dog	<i>O. saundersiae</i>	10 min.	no clinical signs mentioned
11	Dog (case 1)	<i>O. arabicum</i>	unknown	vomiting, diarrhoea
			3 weeks	blindness
12	Dog <sup>a</sup>	unknown	± 12 h	(persistent) vomiting, bloody diarrhoea, lethargy
13	Dog <sup>a</sup>	unknown	± 12 h	(persistent) vomiting, bloody diarrhoea, lethargy
14	Dog <sup>a</sup>	unknown	± 12 h	(persistent) vomiting, diarrhoea, melena, lethargy, weakness, hypotension

<sup>a</sup> Information on clinical outcome was present; these dogs died soon after the information request.



in the presented cases and the low intraocular pressures in case number 1. For example digoxin, a well-known cardiac glycoside, induces cone dysfunction in canines at therapeutic dosages (Maehara et al., 2005; Landfried et al., 2017), and causes retinal degeneration and loss of vision in mice at high doses (Hinshaw et al., 2016). It induces cell death specifically in photoreceptor cells, but has no or only minor effects on other retinal cell types (Landfried et al., 2017). The documented digoxin-induced retinal degeneration corresponds well with the retinal degeneration found in the ophthalmic examination of case 1 and 2. In addition, the abnormal chromatic pupillary light reflex in case 2 indicates a defect at the level of the photoreceptor cells (i.e., rods and cones) and a normal function of the intrinsically photosensitive retinal ganglion cells (Grozdanic et al., 2013). Humans experiencing visual disturbances in response to therapeutic oral digoxin saw a (partial) reversal of their visual deficits when they decreased their dose or discontinued the medication altogether (Renard et al., 2015). In case 2, however, vision was not restored at 6-month follow-up at all. Moreover, indirect ophthalmoscopy revealed that the retinal degeneration had severely progressed. This difference might be explained by different cardiac glycosides having different binding affinities for the various isoforms of Na<sup>+</sup>,K<sup>+</sup>-ATPase (Katz et al., 2010). *Ornithogalum arabicum* might contain cardiac glycosides with a high affinity for retinal Na<sup>+</sup>,K<sup>+</sup>-ATPases, resulting in more devastating effects on the retina compared to other cardiac glycosides, as well as a selectivity for the isoform present in the ciliary body. The effect on the intraocular pressure might be transient as the second case presented with normal intraocular pressures at the time of presentation at the clinic.

A different or additional contributing factor to the possible pathogenesis of *Ornithogalum* induced vision loss, might be the presence of cholestane glycosides, another group of glycosides that, similarly like the cardiac glycosides, belong to the steroidal glycosides (Tang et al., 2013). These cytotoxic glycosides are present in for example *O. caudatum*, *O. saundersiae*, and *O. thyroides* and have a reported inhibitory activity on cAMP phosphodiesterase (Kubo et al., 1992; Plančić et al., 2014) and a potential similar effect on cGMP phosphodiesterase (Chen et al., 2019; Laties, 2009). cGMP phosphodiesterase is important in the phototransduction process and decreased enzyme concentration can result in blindness (Kolandaivelu et al., 2009). In the two described cases, the association of the gastrointestinal and visual disturbances with *Ornithogalum* ingestion were highly suggestive of an intoxication, but other causes of the blindness could not be completely ruled out. For example, an acute-onset, rapidly progressive retinal degeneration in conjunction with an absent pupillary light reflex on stimulation with a bright red light may also be found in cases of Sudden Acquired Retinal Degeneration syndrome (SARDs). However, the age and sex of the dogs and the absence of other commonly co-presenting signs, such as polyuria and polydipsia (Komáromy et al., 2016), made SARDs a less likely diagnosis. In the acute phase, electroretinography might have aided in differentiating SARDs from a toxic insult, but unfortunately both owners declined further diagnostic testing.

The time delay between acute intoxication symptoms (gastrointestinal disturbances) and the onset of vision loss in our two canine cases corresponds with reports in human literature (Piltz et al., 1993; Renard et al., 2015). However, early signs of visual impairment might have been missed, as owners of dogs often only notice changes in the behaviour of their pet by the time the vision deficit is substantial. Time to vision loss in the cat (DPIC database) was substantially shorter (24 h), possibly related to species differences (e.g. retinal isoforms of Na<sup>+</sup>,K<sup>+</sup>-ATPase) or a possible difference in *Ornithogalum* species as the species was unknown.

In conclusion, ingestion of plants belonging to the genus *Ornithogalum* can be potentially life-threatening to companion animals. Animals surviving intoxications by *Ornithogalum arabicum* may suffer from retinal

degeneration and associated permanent visual impairment. Further studies are necessary to confirm the suggested involvement of cardiac glycoside-like toxins present in *Ornithogalum arabicum* and the toxicity of these substances to the retina.

## Declarations of interest

The authors have no competing interests to declare.

## References

- Bamhare, C., 1998. Suspected cardiac glycoside intoxication in sheep and goats in Namibia due to *Ornithogalum nanodes* (Leighton). Onderstepoort J. Vet. Res. 65 (1), 25–30.
- Botha, C.J., Penrith, M.L., 2008. Poisonous plants of veterinary and human importance in southern Africa. J. Ethnopharmacol. 119 (3), 549–558.
- Botha, C.J., Schultz, R.A., van der Lugt, J.J., Archer, C., 2000. A kripsiekte-like syndrome in small stock poisoned by *Ornithogalum toxicarium* Archer & Archer. J. S. Afr. Vet. Assoc. 71 (1), 6–9.
- Breukink, H.J., 1963. Ornithogalosis of Zuidenwindlelie-vergiftiging bij schapen (Ornithogalosis in sheep). Tijdschr. Diergeneesk. 88 (10), 65–658.
- Chen, Q., Zhang, X., Gong, T., Gao, W., Yuan, S., Zhang, P., 2019. Structure and bioactivity of cholestane glycosides from the bulbs of *Ornithogalum saundersiae* Baker. Phytochemistry 164, 206–214.
- Ferth, R., Kopp, B., 1992. Cardenolides from *Ornithogalum umbellatum*. Die Pharmazie 47, 626–629.
- Ferth, R., Baumann, A., Mayer, K.K., Robien, W., Kopp, B., 1992. Cardenolides from *Ornithogalum nutans* (2n=30), Part 2. Z. Naturforschung 47b, 1459–1468.
- Ghannamy, U., Kopp, B., Robien, W., Kubelka, W., 1987. Cardenolides from *Ornithogalum boucheanum*. Planta Med. 53 (2), 172–178.
- Grozdanic, S.D., Kecova, H., Lazić, T., 2013. Rapid diagnosis of retina and optic nerve abnormalities in canine patients with and without cataracts using chromatic pupil light reflex testing. Vet. Ophthalmol. 16 (5), 329–340.
- Hinshaw, S.J., Ogbeifun, O., Wandu, W.S., Lyu, C., Shi, G., Li, Y., Qian, H., Gery, I., 2016. Digoxin inhibits induction of experimental autoimmune uveitis in mice, but causes severe retinal degeneration. Invest. Ophthalmol. Vis. Sci. 57 (3), 1441–1447.
- Katz, A., Lifshitz, Y., Bab-Dinitz, E., Kapri-Pardes, E., Goldshleger, R., Tal, D.M., Karlish, S.J., 2010. Selectivity of digitalis glycosides for isoforms of human Na,K-ATPase. J. Biol. Chem. 285 (25), 19582–19592.
- Katz, A., Tal, D.M., Heller, D., Habeck, M., Ben Zeev, E., Rabah, B., Bar Kana, Y., Marcovich, A.L., Karlish, S.J., 2015. Digoxin derivatives with selectivity for the  $\alpha 2\beta 3$  isoform of Na,K-ATPase potently reduce intraocular pressure. Proc. Natl. Acad. Sci. U. S. A. 112 (44), 13723–13728.
- Knollinger, A.M., La Croix, N.C., Barrett, P.M., Miller, P.E., 2005. Evaluation of a rebound tonometer for measuring intraocular pressure in dogs and horses. J. Am. Vet. Med. Assoc. 227 (2), 244–248.
- Kolandaivelu, S., Huang, J., Hurley, J.B., Ramamurthy, V., 2009. AIPL1, a protein associated with childhood blindness, interacts with alpha-subunit of rod phosphodiesterase (PDE6) and is essential for its proper assembly. J. Biol. Chem. 284, 30853–30861.
- Komáromy, A.M., Abrams, K.L., Heckenlively, J.R., Lundy, S.K., Maggs, D.J., Leeth, C.M., Mohan Kumar, P.S., Peterson-Jones, S.M., Serreze, D.V., Van der Woerd, A., 2016. Sudden acquired retinal degeneration syndrome (SARDS) - a review and proposed strategies toward a better understanding of pathogenesis, early diagnosis, and therapy. Vet. Ophthalmol. 19 (4), 319–331.
- Kubo, S., Mimaki, Y., Terao, M., Sashida, Y., Nikaido, T., Ohmoto, T., 1992. Acylated cholestane glycosides from the bulbs of *Ornithogalum saundersiae*. Phytochemistry 31 (11), 3969–3973.
- Landfried, B., Samardzija, M., Barben, M., Schori, C., Klee, K., Storti, F., Grimm, C., 2017. Digoxin-induced retinal degeneration depends on rhodopsin. Cell Death Dis. 8 (3), e2670.
- Laties, A.M., 2009. Vision disorders and phosphodiesterase type 5 inhibitors: a review of the evidence to date. Drug Saf. 32, 1–18.
- Maehara, S., Osawa, A., Itoh, N., Wakaiki, S., Tsuzuki, K., Seno, T., Kushiro, T., Yamashita, K., Izumisawa, Y., Kotani, T., 2005. Detection of cone dysfunction induced by digoxin in dogs by multicolor electroretinography. Vet. Ophthalmol. 8 (6), 407–413.
- Piltz, J.R., Wertenbaker, C., Lance, S.E., Slamovits, T., Leeper, H.F., 1993. Digoxin toxicity. Recognizing the varied visual presentations. J. Clin. Neuro Ophthalmol. 13, 275–280.
- Plančić, M., Božin, B., Kladar, N., Rat, M., Srdenović, M., 2014. Phytochemical profile and biological activities of the genus *Ornithogalum* L. (Hyacinthaceae). Biologica Serbica 36 (1–2), 3–17.
- Pohl, R.W., 1965. Contact dermatitis from the juice of *Ornithogalum caudatum*. Toxicol 3 (2), 167–168.
- Renard, D., Rubli, E., Voide, N., Borruat, F.X., Rothuizen, L.E., 2015. Spectrum of digoxin-induced ocular toxicity: a case report and literature review. BMC Res. Notes 8, 368.
- Tang, Y., Li, N., Duan, J.A., Tao, W., 2013. Structure, bioactivity, and chemical synthesis of OSW-1 and other steroidal glycosides in the genus *Ornithogalum*. Chem. Rev. 113, 5480–5514.
- Vogelsang, A., 1955. Clinical trial of *Ornithogalum umbellatum* on the human heart; preliminary report. Can. Med. Assoc. J. 73 (4), 295–296.
- Waud, R.A., 1954. The action of *Ornithogalum umbellatum* on the heart. J. Pharmacol. Exp. Ther. 111 (2), 147–151.
- Wink, M., Van Wyk, B.E., 2008. Handbook Mind-Altering and Poisonous Plants of the World. Timber press, London, pp. 178.