

Enhanced chondrogenic potential in GelMA-based 3D cartilage model via Wnt3a surface immobilization

Imere, Angela; Foster, Nicky; Hajjali, Hadi; Okur, Kerime Ebrar; Wright, Abigail; Barroso, Inês A.; El Haj, Alicia

DOI:

[10.1038/s41598-024-65970-w](https://doi.org/10.1038/s41598-024-65970-w)

License:

Creative Commons: Attribution (CC BY)

Document Version

Publisher's PDF, also known as Version of record

Citation for published version (Harvard):

Imere, A, Foster, N, Hajjali, H, Okur, KE, Wright, A, Barroso, IA & El Haj, A 2024, 'Enhanced chondrogenic potential in GelMA-based 3D cartilage model via Wnt3a surface immobilization', *Scientific Reports*, vol. 14, no. 1, 15022. <https://doi.org/10.1038/s41598-024-65970-w>

[Link to publication on Research at Birmingham portal](#)

General rights

Unless a licence is specified above, all rights (including copyright and moral rights) in this document are retained by the authors and/or the copyright holders. The express permission of the copyright holder must be obtained for any use of this material other than for purposes permitted by law.

- Users may freely distribute the URL that is used to identify this publication.
- Users may download and/or print one copy of the publication from the University of Birmingham research portal for the purpose of private study or non-commercial research.
- User may use extracts from the document in line with the concept of 'fair dealing' under the Copyright, Designs and Patents Act 1988 (?)
- Users may not further distribute the material nor use it for the purposes of commercial gain.

Where a licence is displayed above, please note the terms and conditions of the licence govern your use of this document.

When citing, please reference the published version.

Take down policy

While the University of Birmingham exercises care and attention in making items available there are rare occasions when an item has been uploaded in error or has been deemed to be commercially or otherwise sensitive.

If you believe that this is the case for this document, please contact UBIRA@lists.bham.ac.uk providing details and we will remove access to the work immediately and investigate.



OPEN

Enhanced chondrogenic potential in GelMA-based 3D cartilage model via Wnt3a surface immobilization

Angela Imere^{1,2}, Nicola C. Foster^{1,2}, Hadi Hajjali^{1,2}✉, Kerime Ebrar Okur¹, Abigail L. Wright¹, Ines A. Barroso¹ & Alicia J. El Haj¹✉

Cartilage tissue engineering aims to develop functional substitutes for treating cartilage defects and osteoarthritis. Traditional two-dimensional (2D) cell culture systems lack the complexity of native cartilage, leading to the development of 3D regenerative cartilage models. In this study, we developed a 3D model using Gelatin Methacryloyl (GelMA)-based hydrogels seeded with Y201 cells, a bone marrow mesenchymal stem cell line. The model investigated chondrogenic differentiation potential in response to Wnt3a stimulation within the GelMA scaffold and validated using known chondrogenic agonists. Y201 cells demonstrated suitability for the model, with increased proteoglycan content and upregulated chondrogenic marker expression under chondrogenic conditions. Wnt3a enhanced cell proliferation, indicating activation of the Wnt/ β -catenin pathway, which plays a role in cartilage development. GelMA hydrogels provided an optimal scaffold, supporting cell viability and proliferation. The 3D model exhibited consistent responses to chondrogenic agonists, with TGF- β 3 enhancing cartilage-specific extracellular matrix (ECM) production and chondrogenic differentiation. The combination of Wnt3a and TGF- β 3 showed synergistic effects, promoting chondrogenic differentiation and ECM production. This study presents a 3D regenerative cartilage model with potential for investigating cartilage biology, disease mechanisms, and drug screening. The model provides insights into complex cartilage regeneration mechanisms and offers a platform for developing therapeutic approaches for cartilage repair and osteoarthritis treatment.

Cartilage tissue engineering is a promising field that aims to develop functional cartilage substitutes for the treatment of cartilage defects and osteoarthritis. Traditional two-dimensional (2D) cell culture systems have limitations in recapitulating the complex three-dimensional (3D) architecture and cellular microenvironment of native cartilage¹. Within cartilage, a diverse array of cells exists, intricately arranged to form a complex tissue structure. Therefore, the development of 3D regenerative cartilage models has gained significant attention in recent years^{1,2}. These models offer a more physiologically relevant platform for studying cartilage biology, disease mechanisms, and importantly drug screening applications.

In the field of tissue engineering, hydrogels have emerged as promising scaffolds due to their biocompatibility, tunable mechanical properties, and ability to encapsulate cells and bioactive molecules^{3–6}. Gelatin methacryloyl (GelMA) is a commonly used hydrogel that exhibits excellent biocompatibility and can be easily functionalized to incorporate bioactive cues^{4,7,8}. GelMA-based hydrogels have shown great potential for cartilage tissue engineering applications such as drug screening^{9–11}. They provide a compatible and scaleable microenvironment for enhanced chondrogenic cell viability and functionality¹². These characteristics make GelMA an attractive choice for scaffold fabrication in 3D regenerative cartilage models.

Furthermore, the Wnt signaling pathway plays a critical role in cartilage development, homeostasis, and regeneration¹³. Activation of Wnt signaling, particularly the Wnt/ β -catenin pathway, has been shown to play a dual role in modulation of chondrogenic differentiation and the inhibition of chondrocyte hypertrophy¹³. Wnt3a, a Wnt signaling agonist, has been widely investigated for its potential in cartilage tissue engineering^{14,15}. It has also been shown to exert significant influence on asymmetric cell division and cell migration, playing pivotal roles in the intricate orchestration of developmental and physiological events^{16,17}. It is noteworthy that soluble Wnt3a, when added globally to cells, lacks the spatial cues, which have been found to play a role in asymmetric

¹Healthcare Technologies Institute, Institute of Translational Medicine, National Institute for Health and Care Research (NIHR) Birmingham Biomedical Research Centre, School of Chemical Engineering, University of Birmingham, Birmingham B15 2TT, UK. ²These authors contributed equally: Angela Imere, Nicola C. Foster and Hadi Hajjali. ✉email: h.hajjali@bham.ac.uk; a.elhaj@bham.ac.uk

division during differentiation^{16,17}. Our studies have demonstrated that the immobilization of Wnt3a promotes asymmetric division of embryonic stem cells and skeletal stem cells, providing crucial directional cues for engineering 3D tissues^{18,19}. Wnt3a serves as a potent activator of the Wnt- β -catenin pathway, as evidenced by previous studies^{14,20}. While an excessive activation of this pathway in healthy cartilage has been implicated in cartilage breakdown^{21,22}, its role becomes crucially different following cartilage injury. In such instances, when tissue remodelling and cell expansion are necessary for repair, an appropriately timed upregulation of Wnt3a has been associated with enhanced tissue repair and regeneration, as shown in the research by Cheverud et al.²³. These findings highlight the context-dependent nature of Wnt3a signalling in cartilage biology and underscore its potential as a key regulator in cartilage tissue engineering and regenerative medicine approaches.

Moreover, in cell-based cartilage regenerative models, primary chondrocytes have traditionally been employed. However, the scarcity of donor sites and the relatively low yield of isolated cells from autologous tissue (representing only 1–5% of the total tissue volume) pose significant challenges²⁴. To address these limitations, there has been a growing interest in investigating the differentiation of immortalized stem cells into chondrocytes as a promising alternative²⁵. This approach offers several advantages, including cost-effectiveness, improved reproducibility, enhanced proliferative capacity, and faster production timelines, making it an attractive option for the development of cartilage tissue engineering models for high throughput screening applications²⁵. Y201 cells, a type of bone marrow mesenchymal stem cells (MSCs)²⁶, possess the ability to undergo chondrogenic differentiation and has been demonstrated for cartilage regeneration models^{27,28}.

In existing tissue engineering approaches, there are some limitations such as scalability, reproducibility, and the ability to recapitulate the complex microenvironment of native cartilage tissue. By addressing these limitations, our study aimed to contribute to overcoming current challenges in cartilage tissue engineering. In this study, our aim was to develop a 3D regenerative cartilage model incorporating bioactive cues, such as Wnt3a, using GelMA-based hydrogel seeded with Y201 cells, which can be scaled up for use in drug screening applications (Fig. 1). We aimed to investigate the chondrogenic differentiation potential of Y201 cells in response to Wnt3a stimulation within the 3D hydrogel scaffold. Furthermore, we aimed to assess the production of cartilage-specific extracellular matrix (ECM) and validate the chondrogenic model using known chondrogenic agonists. By integrating 3D regenerative cartilage models including GelMA hydrogels, Wnt3a, and Y201 cells for drug screening, we can advance the field of cartilage tissue engineering, improve our understanding of cartilage regeneration mechanisms, and potentially discover novel therapeutic approaches for cartilage repair and osteoarthritis treatment.

Materials and methods

Wnt3a immobilization

Recombinant mouse Wnt3a protein was purchased from R&D Systems and stock solutions, prepared by reconstituting the protein to 10 $\mu\text{g}/\text{ml}$ in a solution of 1% CHAPS buffer (Merck), were stored in aliquots at $-80\text{ }^{\circ}\text{C}$ for up to 3 months. Wnt3a working solutions were prepared by diluting the stock solution to 600 ng/ml in Dulbecco's Phosphate Buffered Solution (DPBS) (Gibco). Wnt3a was immobilized on the surface of 96-well plate (Corning) by adding 40 μl of protein working solution in previously modified wells. Well plate modification was performed by adding a 2% (3-Aminopropyl)triethoxysilane (APTES) (Merck) solution in 90% ethanol (Merck) and incubating for 30 min at room temperature (RT), followed by two washes with 100% ethanol. After 1 h of incubation at RT, Wnt3a solution was removed, followed by a wash with DPBS. For control wells, Wnt3a protein

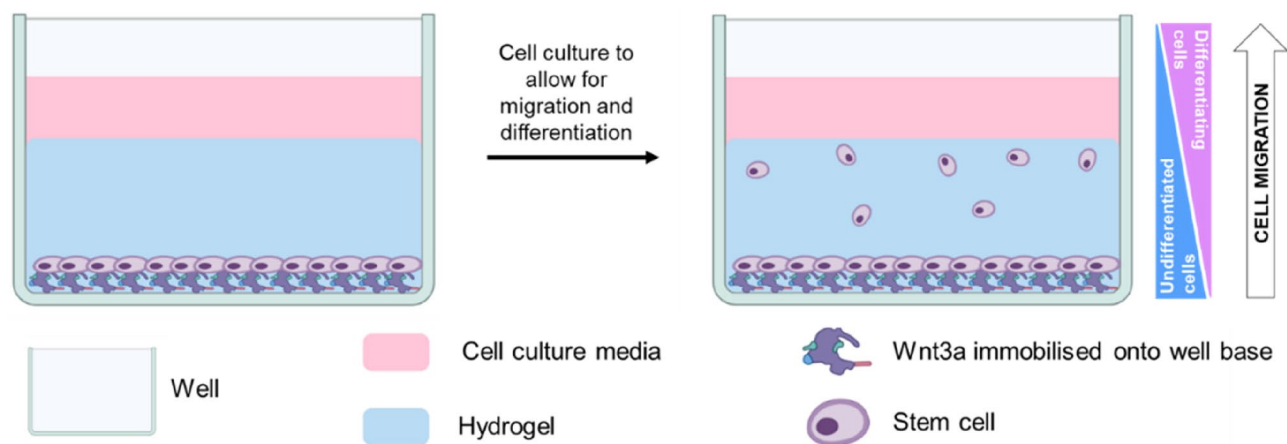


Figure 1. Schematics of 3D regenerative cartilage model. Stem cells are seeded in monolayer into a 96-well plate, which was previously chemically modified to allow immobilization of Wnt3a onto the base of the well, covered with a hydrogel. Then, the sample is covered in medium (either basic medium or supplemented with the chondrogenic molecule of interest) and cultured to allow for cell migration towards the top of the gel and differentiation. After the culture period, cells at the bottom of the well maintain their stemness, while as they migrate to the top, cells commit to the chondrogenic lineage (cell differentiation level depending on the efficacy of the screened drug).

was inactivated after immobilization with a freshly made 20 mM Dithiothreitol (DTT) (Merck) solution in DPBS, which was incubated at 37 °C for 30 min and washed with DPBS. In order to block exposed silane groups, prior to cell culture all wells were covered for 1 h in basic medium, consisting of high glucose Dulbecco's Modified Eagle Medium (DMEM) supplemented with 10% Fetal Bovine Serum (FBS) (Gibco), 1% L-Glutamine solution (Merck) and 1% penicillin/streptomycin solution (PS) (Merck).

Y201 cell culture and characterization

Cell culture

Y201 bone-marrow stromal cells (BMSCs), kindly donated by Prof. Paul Genever from the University of York, were stably transfected with 7xTCF-GFP/SV40-mCherry as previously described.^{26,29} Cells were routinely passaged every 2–3 days in basic medium when they reached ~80% confluency. For all experiments cells were used up to passage 20. For chondrogenic differentiation (also referred to as 'TGF- β 3' condition), medium consisted of high glucose DMEM supplemented with 1% FBS, 1% L-glutamine, 1% PS, 10% sodium pyruvate solution, 40 μ g/ml L-proline, 50 μ g/ml L-ascorbic acid-2-phosphate, 10% insulin-transferrin-selenium solution (ITS), 100 nM dexamethasone (all from Merck) and 10 ng/ml recombinant human TGF- β 3 (Peprotech). Kartogenin-supplemented medium was prepared using high glucose DMEM supplemented with 5% FBS and 100 nM kartogenin (Selleck Chemicals).

Cells were pelleted and differentiated into chondrocytes using a high-throughput v-bottomed 96-well plate culture system, following previously established protocols³⁰. Each well of an autoclave-sterilized v-bottomed 96-well polypropylene microplate (Greiner bio-one) received 200,000 cells at passage 3, which were subsequently centrifuged at 500 \times g for 5 min. The resulting cell pellets were cultured in 250 μ l of chondrogenic differentiation medium, composed of high glucose DMEM supplemented with 2 mM L-glutamine, 100 U/ml penicillin-0.1 mg/ml streptomycin, 100 μ g/ml sodium pyruvate, 40 μ g/ml L-proline, 50 μ g/ml L-ascorbic acid-2-phosphate, 4.7 μ g/ml linoleic acid, 1.5 mg/ml bovine serum albumin (BSA), 1 \times insulin-transferrin-selenium, 100 nM dexamethasone (all obtained from Merck), and 10 ng/ml recombinant human TGF- β 3 (Peprotech). Throughout the experiment, the culture medium was refreshed three times weekly, and the cell pellets were maintained for a total duration of three weeks.

In order to investigate Y201 cell response to Wnt3a, cells were detached, counted and seeded on 96-well plates at a density of approximately 5×10^4 cells/cm². Cells were cultured for 4 days in basic medium with/without 50 ng/ml Wnt3a.

Histology

Samples of Y201 cell pellets in basic and chondrogenic conditions (n = 2 per group) were fixed in 10% neutral buffered formalin for 2 h and embedded in paraffin. Samples were cut as 5 μ m-thick slices and deposited on SuperFrost™ glass slides (ThermoScientific). Sections were de-waxed in xylene for 5 min, followed by re-hydration in descending grades of ethanol to water. Histological slides were stained with Toluidine blue (Merck) for production of proteoglycans and GAGs, and counterstained with Gill's number 2 Hematoxylin (Merck) according to manufacturer's instructions. Sections were then washed in absolute ethanol thrice and cleared in xylene before mounting with DPX mountant (Merck). Sections were imaged using an EVOS XL Core microscope.

Assessment of gene expression

Y201 cell pellets in basic and chondrogenic conditions (n = 3 per group) were snap frozen after 26 days of culture and homogenized using disposable pellet pestles (Merck). RNA was then extracted using TRI Reagent (Merck) and converted into cDNA using high-capacity cDNA Reverse Transcription Kits (Applied Biosystems) (both as per the manufacturer's instructions). Gene expression analysis was performed for ACAN and COL2A1 using SYBR Green-based quantitative real-time polymerase chain reaction (qRT-PCR) with pre-optimized QuantiTect primer assays (Qiagen) and an AriaMx Real-Time PCR System (Agilent Technologies). qRT-PCR data were analyzed using the $\Delta\Delta$ Ct method as described previously³¹, with gene expression normalized to the reference gene GAPDH.

Wnt3a/Gel platform preparation

Preparation of hydrogel precursor solutions

For gellan gum hydrogels, a 1% (w/v) solution was prepared by dissolving Phytigel™ (Merck) in dH₂O. The solution was heated in a microwave for 5 s, followed by manual swirling for 2–3 s and this process was repeated until the powder was completely dissolved (~3 min). The precursor solution was UV-sterilized for 90 s and then incubated at 37 °C for at least 30 min to allow for cooling without setting and maintained at 37 °C until needed.

For collagen hydrogels, stock rat tail collagen type I solution (Corning) was diluted to 1 mg/ml using basic medium supplemented with 20% HEPES buffer. The hydrogel solution was maintained in ice to avoid setting of the gel until needed.

For Poly(ethylene glycol) (PEG) hydrogels, a 5% (w/v) solution was prepared by dissolving Poly(ethylene glycol) diacrylate pellets (ThermoFisher) in DPBS. Then, Irgacure® 1173 (BASF) photoinitiator was added (1 μ l in 1 ml of PEG solution) and the precursor solution was left in the dark until needed.

For GelMA hydrogels, polymer synthesis was performed as previously described.³² Briefly, a 10% (w/v) solution was prepared by dissolving gelatine type A from porcine skin (300 bloom strength, Merck) in DPBS at 60 °C for 30 min. Methacrylic anhydride (MA) (Merck) was added to the gelatine solution to a final concentration of 6% (v/v) and left to react for 2 h at 50 °C under vigorous stirring. After the reaction period, the solution was transferred to 50 mL tubes and the unreacted MA was partially removed by centrifugation at 3500 rpm for 5 min at RT. The solution was then dialyzed against distilled water for 7 days at 37 °C using 12–14 kDa cut-off

dialysis tubes (Thermo Scientific). After dialysis, the GelMA solution was diluted to 2% (w/v) and the pH adjusted to 7.4 using 1 mM sodium hydroxide solution (Merck). Lastly, GelMA solutions were lyophilized for 2 days to generate a white porous foam, which was stored at -80°C until further use. After GelMA synthesis, a 4% (w/v) hydrogel precursor solution was prepared by dissolving the synthesized polymer in DPBS at 60°C for 30 min and UV-sterilized for 5 min. Then, 40 mM phosphated riboflavin (Merck) and 546 mM sodium persulphate (Merck) solution were prepared in dH_2O and filter-sterilized. The two photoinitiators were added into the GelMA solution at a final concentration of 2 mM and 10 mM for riboflavin and sodium persulfate, respectively, and maintained in the dark until needed.

Set-up of the 3D model

Y201 cells were detached, resuspended in serum-free medium and seeded onto Wnt3a-immobilized 96-well plates at a density of 3×10^4 cells per well. Cells were left to adhere for at least 1 h before the medium was removed and the cells were covered with 50 μl per well of the appropriate hydrogel solution. To allow for gelation, gellan gum and collagen precursor solutions were incubated for 10 min at 37°C , while PEG samples were irradiated with broad spectrum UV light for 5 min at a distance of 1.7 cm. GelMA precursor solution was set using a 100 mW/ cm^2 Knightsbridge FLF Floodlight visible light lamp (RS Components) for 5 min at a distance of 5.5 cm. After the hydrogels were set, 200 μl of appropriate medium was added on top of the gels and samples were incubated at 37°C and 5% CO_2 for 1 h, before the medium was replaced. Basic, chondrogenic or kartogenin-supplemented medium (described above in Section "Cell culture") was used for samples in basic, 'TGF- β 3' and 'kartogenin' conditions, respectively. After 72 h of culture, kartogenin-supplemented medium was replaced with high glucose DMEM supplemented with 5% FBS, 1% L-Glutamine, 1% PS and 1% ITS. For all conditions, during the culture period medium was replaced every other day.

Optical coherence tomography (OCT)

4% (w/v) GelMA hydrogels were prepared in 96-well plate as described in Section "Preparation of hydrogel precursor solutions". Prepared hydrogels were covered with culture medium to simulate the experimental conditions and underwent OCT imaging on days 0, 3, and 7. A 20 μl medium was added while doing the imaging in order to prevent dehydration and reflection. Following the imaging procedure, 200 μl of the appropriate culture medium was added onto the hydrogels, and the samples were subsequently incubated at 37°C . Mechanical property analysis was carried out utilizing debiased ambient vibration Optical Coherence Elastography (OCE). This technique, designed for mechanical contrast evaluation, was conducted using an OCT imaging system, with no supplementary hardware modifications. This approach allows for the non-contact, sterile assessment of mechanical properties, relying on using ambient vibrations. The OCT system employed in this study featured a lateral scanning distance of approximately 3.7 mm. Mechanical property assessment encompasses the generation of mechanical contrast maps and quantitative analysis through the calculation of Young's modulus (E). E is derived using a calibration curve established through nanoindentation and OCT imaging. The correlation between E and the estimated wavelength (λ) follows the equation $E \propto \lambda^2$, which justifies the utilization of the mean wavelength squared, λ^2 , in E calculation³³.

Biochemical assays

Y201 cells cultured in monolayer ($n = 4$ per group) were washed with DPBS, detached and centrifuged to form a pellet, while the 3D cell constructs ($n = 4$ per group) were only washed with DPBS. 250 μL of Proteinase K (Invitrogen) (1 mg/mL dissolved in 100 mM ammonium acetate, pH 7.0) was added per 100 mg wet weight of sample. Samples were vortexed, then incubated at 60°C with an additional vortex every 30 min until complete dissociation had occurred (~ 2 h). Proteinase K was inactivated by heating the samples to 100°C for 5 min in a heat block. DNA content was quantified using the PicoGreen dye assay (Biosciences) following the kit instructions with a calf thymus DNA standard. Sulfated glycosaminoglycan (sGAG) content within the sample was quantified using the dimethylmethylene blue (DMMB) dye-binding assay with a chondroitin sulfate standard. The sGAG content secreted into media was analyzed using Glycosaminoglycan Assay Blyscan kit (Biocolor) following the kit instruction, also with a chondroitin sulfate standard. Cell proliferation in monolayers was quantified using the EdU (Abcam) and Ki67 (Abcam) assays following the kit instructions.

Immunofluorescence staining

Y201 cells were either cultured in monolayers at a seeding density of approximately 5×10^4 cells/ cm^2 or 5×10^4 cells/ml in a 96-well plate for 7 days or in 3D hydrogels for 7–14 days, as described above. Samples were fixed in 10% neutral buffered formalin for 15 min (cell monolayers) or 2 h (cells in hydrogels) and simultaneously permeabilized and blocked with 2% bovine serum albumin (BSA)/0.1% Triton-X in PBS for 2 h. Cells were stained for STRO-1 (Abcam), SOX9 (Abcam), NCAM (R&D Systems) and COL2A1 (Merck). All primary antibodies were diluted in 1% BSA/0.1% Triton-X at a working concentration of 10 $\mu\text{g}/\text{ml}$ and incubated overnight at 4°C . After washing with PBS, cells were labelled with donkey anti-rabbit AlexaFluor488 (ThermoFisher), donkey anti-goat AlexaFluor568 (ThermoFisher) and/or donkey anti-mouse AlexaFluor 647 (ThermoFisher) diluted at a working concentration of 2 $\mu\text{g}/\text{ml}$ in 1% BSA/0.1% Triton-X and incubated for 2 h at RT. Cells were washed with PBS thrice, counterstained with DAPI (Merck) for 15 min and stored in PBS. Fluorescence microscopy was performed on an EVOS M5000 microscope for cell monolayers, while a confocal Olympus IX81 microscope was used to image 3D hydrogels. Based on the number of migrated cells, the migration results were categorized. If there were < 10 cells, this was categorized as poor migration as that was a relatively low proportion of the total in the bottom. If more than 10 cells were observed, this was categorized as average migration, while migration that exceeded 400 μm in the 500 μm analysis was considered as good migration.

Statistical analysis

Statistical analysis was performed using GraphPadPrism software package (Dotmatics). Unpaired t-test was used to compare between two groups. Statistical significance was considered if $p < 0.05$. Data are presented as mean \pm standard deviation (SD).

Results

Y201 cell line for model development

Y201 BMSCs with GFP TCF/LEF reporter were characterized to ensure their suitability as a reproducible cell source in our chondrogenic model. Stemness is confirmed in undifferentiated cells cultured in monolayer, since expression of the mesenchymal stem cell marker STRO-1 is observed, while low levels of the chondrogenic marker SOX9 is detected (Fig. 2ai). Y201 MSCs were cultured for 3 weeks in a cell pellet under both basic and chondrogenic conditions (i.e. with TGF- β 3). In presence of TGF- β 3, cells produce a cartilaginous matrix, having high amounts of proteoglycans (Fig. 2aai) compared to the basic control and this outcome is confirmed by

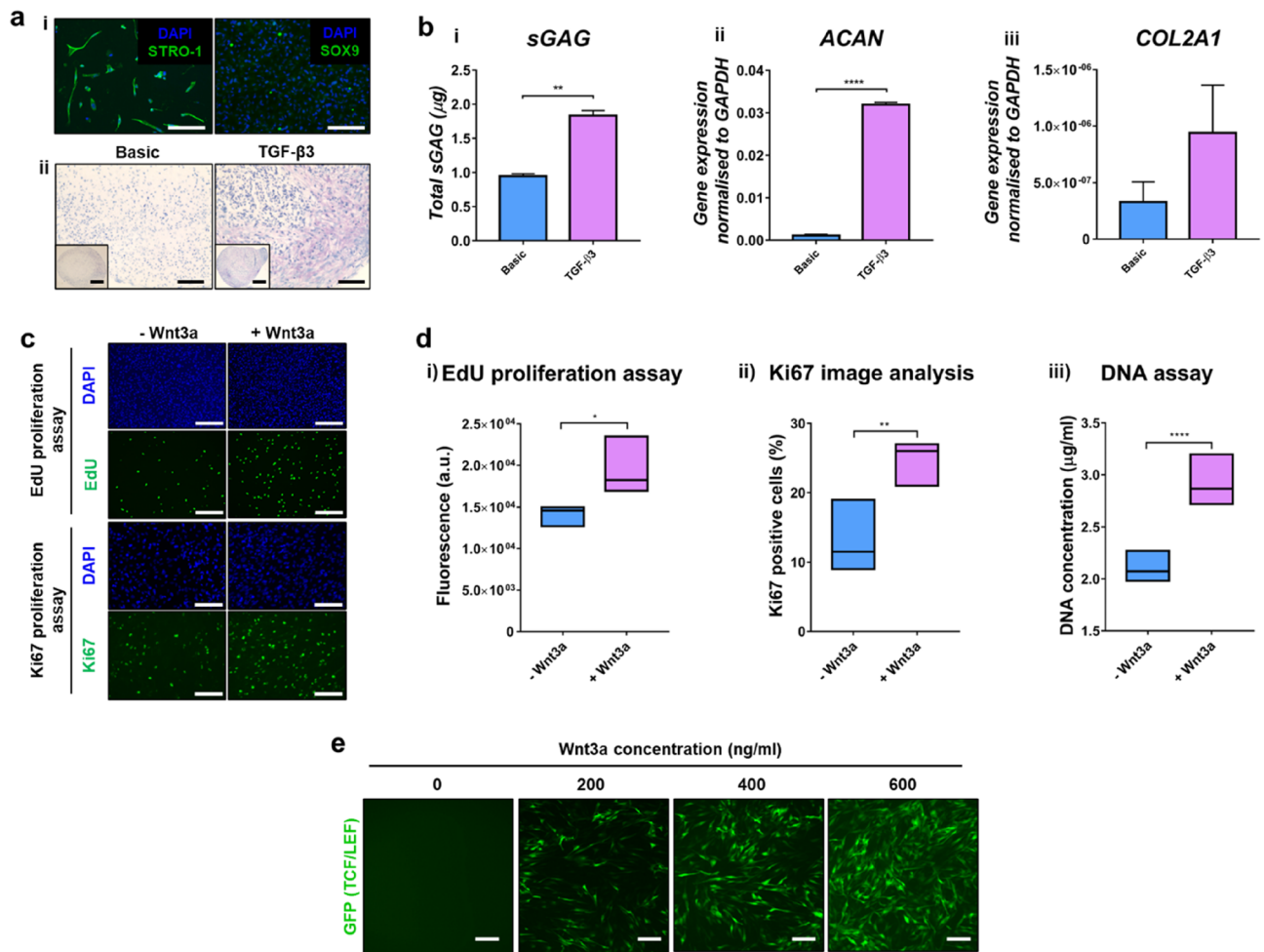


Figure 2. Characterization of Y201 GFP TCF/LEF reporter BMSCs, showing their suitability as a cell source for the development of a 3D regenerative cartilage model for drug screening applications. (a) (i) Representative immunofluorescence images of undifferentiated Y201 cells cultured in monolayer for 7 days, showing cell nuclei (blue) and high expression of STRO-1 (left image, green) and low levels of SOX9 (right image, green), consistent with the undifferentiated state of Y201 cells. (ii) Y201 cell pellet in basic (left) and chondrogenic conditions (right) after 26 days of culture stained for proteoglycans, showing increased production of proteoglycans in presence of TGF- β 3 compared to the control. Scale bars = 150 μ m. (b) (i) sGAG assay indicates significant increase in sGAG production in chondrogenic medium compared to basic control. (ii) Gene expression of ACAN and (iii) COL2A1 relative to GAPDH indicates a cartilage-like genetic profile of the cells under chondrogenic conditions (** $p < 0.01$; **** $p < 0.0001$). (c) Representative immunofluorescence images of EdU and Ki67 proliferation assay, showing improved proliferation of Y201 monolayers exposed to soluble Wnt3 (+ Wnt3a) compared to untreated control (-Wnt3a) (nuclei = blue, Edu/Ki67 = green). Scale bars = 150 μ m. (d) Quantification of (i) Edu, (ii) Ki67 and (iii) Pico Green assays, confirming enhanced proliferation of Y201s upon treatment with soluble Wnt3a (* $p < 0.05$; ** $p < 0.01$; **** $p < 0.0001$). (e) Representative immunofluorescence images of Y201 BMSCs confirming Wnt3a functionality by activation of the TCF/LEF reporter (GFP TCF/LEF = green). Cell response to Wnt3a is dose dependent. Scale bars = 150 μ m.

the sGAG assay (Fig. 2bi). Key chondrogenic markers ACAN and COL2A1 are overexpressed in chondrogenic conditions (Fig. 2bii,iii). These outcomes highlight the ability of the selected cell line to switch from a mesenchymal stem cell behavior to a differentiated chondrogenic lineage, depending on the environmental conditions.

Wnt3a activity on Y201 BMSCs was also investigated. Fig. 2c demonstrates that supplementation of Wnt3a in the medium significantly improves cell proliferation compared to the untreated control, as also confirmed by quantification of Edu (Fig. 2di), Ki67 (Fig. 2dii) and DNA (Fig. 2diii) assays. Moreover, transfection of Y201 cells with GFP TCF/LEF reporter allows assessment of the activation of the Wnt/ β -catenin signalling pathway. Results show that TCF/LEF reporter is activated by Wnt3a and cell response is dose dependent, with stronger reporter activity at higher Wnt3a doses (Fig. 2e).

Selection of GelMA as hydrogel for 3D cartilage model

Screening of different hydrogels was performed to identify the most appropriate system to sustain cell viability, migration, proliferation, and differentiation in the proposed 3D model (Fig. 1). When a PEG hydrogel is placed above the Y201 cell/Wnt monolayer, cells migrate (Fig. 3b) at a significantly higher rate in the presence of active Wnt3a compared to inactive Wnt3a (Fig. 3ai). However, exposure to UV radiation for gel curing was found to be detrimental to Wnt3a activity and cell viability, as shown in Fig. 3aii,iii. Gellan gum and collagen gels also demonstrated poor suitability for use in the 3D model. Indeed, both hydrogels present limited capability of chemistry tuneability, as summarized in Fig. 3c. Moreover, gellan gum limits cells' migration (Fig. 3b) and collagen gels tend to contract during culture (Figure S1), although good cell migration and differentiation to the top of the system is observed. On the contrary, GelMA hydrogel presents the optimal properties amongst the screened systems, as summarized in Fig. 3c.

Mechanical properties of GelMA hydrogel

We conducted debiased ambient vibration OCE analysis on 4% (w/v) GelMA hydrogels ($n = 5$) utilizing OCT testing on days 0, 3, and 7, as described in Section "Optical coherence tomography (OCT)". Notably, the observed decline in stiffness is prominently reflected in the mechanical contrast (λ) maps, as showcased in Fig. 4a. Furthermore, a comprehensive quantitative analysis of this stiffness reduction is shown in Fig. 4b, which presents the change in stiffness in Young's modulus. These figures offer a detailed insight into the mechanical properties of the tested hydrogels during the specified time points.

Cell proliferation, migration and differentiation

Cell proliferation, migration and differentiation were analyzed to investigate the synergistic effect of immobilized Wnt3a platform and the chondro-inductive factors TGF- β 3 and kartogenin. Y201 cells seeded in monolayer were also analyzed as positive controls into the effectiveness of the chondro-inductive compounds. Overall, both TGF- β 3 and kartogenin significantly reduce cell proliferation compared to basic control (Fig. 5ai) when cells are cultured in monolayer, while no statistically significant differences are observed in the 3D model among all groups (Fig. 5bi). In particular, TGF- β 3 has a remarkable effect in monolayer, inducing the lowest DNA concentration. A key marker for chondrogenic differentiation is sGAG production. In 2D models, kartogenin shows the highest amount of sGAG (Fig. 5aii), whereas this enhanced production is not observed in our 3D model (Fig. 5bii). In contrast with the addition of immobilized active Wnt3a, TGF- β 3 both in monolayer (Fig. 5aiii) and in 3D (Fig. 5bii,iii) leads to a significant increase of total sGAG production and GAG production/cell. Taken together, these results show that a combination of TGF- β 3 and immobilized active Wnt3a in GelMA hydrogel induces the highest amount of sGAG production. This data also demonstrates the different responses observed to these known chondrogenic agonists between 2 and 3D models.

Generating complex 3D models enables the investigation of multiple properties of the chondrogenic differentiation and cartilage repair components. Alongside proliferation and sGAG production, the number of SOX9 positive and migrated Y201 cells was also assessed. As shown by confocal microscopy (Fig. 6a), the presence of immobilized Wnt3a promotes cell migration towards the top surface of the hydrogel. Y201 cells, when exposed to TGF- β 3, migrate the furthest distance towards the surface of the gel (Fig. 6b). Interestingly, kartogenin seems to inhibit cell migration, as shown by a significant reduction in migratory distance compared to the basic control (Fig. 6b). Across all conditions, asymmetric division of cells can be observed, as SOX9 positivity is detected mainly in migratory cells (Fig. 6a). In accordance with sGAG production, addition of TGF- β 3 significantly increases the number of SOX-9 positive cells compared to the basic control and addition of kartogenin, indicating that TGF- β 3 has an inherently higher chondro-inductive effect than kartogenin (Fig. 6c).

Discussion

Current 2D models for use in screening of drugs for diseases such as osteoarthritis have not been successful in identifying new potential therapeutics. The development of 3D regenerative cartilage models using hydrogels has gained significant attention in cartilage tissue engineering for its ability to better mimic the native cartilage microenvironment. The development of models that can enable the screening of a complex environment within cartilage would potentially enable new approaches to therapeutics to be defined. In this study, we successfully developed a 3D GelMA regenerative cartilage model incorporating bioactive cues, such as Wnt3a, and seeded with the bone marrow Y201 cell line. The model aimed to investigate the multiple components of chondrogenic repair including proliferation, differentiation, migration and cartilage-specific ECM production.

Our characterization of Y201 cells revealed their suitability as a scaleable and consistent cell component for the 3D cartilage model as demonstrated previously²⁶. Under chondrogenic conditions, Y201 cells produced a cartilaginous matrix with increased proteoglycan content, and gene expression of chondrogenic markers ACAN and COL2A1 was upregulated, further confirming their chondrogenic potential²⁷. Additionally, exposure to

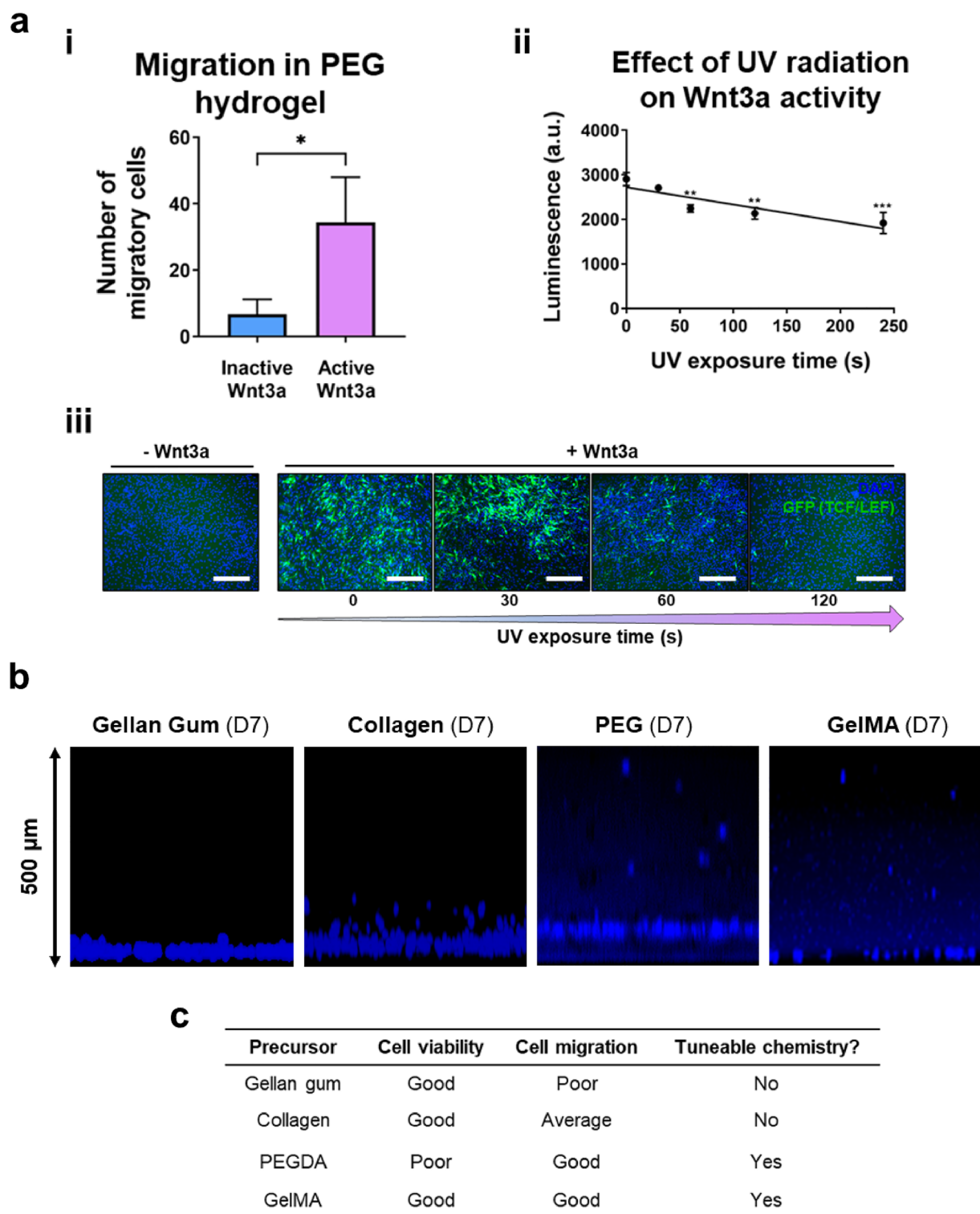


Figure 3. Screening of various hydrogels demonstrates that GelMA is optimal for the 3D regenerative cartilage model for drug screening applications. (a) Y201 cells in PEG hydrogel. (i) migration quantification, indicating that Y201s are able to migrate in PEG hydrogel ($*p < 0.05$). (ii-iii) UV radiation exposure during PEG curing negatively affects Wnt3a activity, as demonstrated by (ii) the decreasing luminescence (significance relevant to control (0 s); $**p < 0.01$; $***p < 0.001$) and (iv) lower activation of GFP TCF/LEF reporter over increasing UV exposure (cell nuclei = blue; GFP TCF/LEF = green). Scale bars = 300 μ m. (b) Representative immunofluorescence image of Y201 cells in different gels including gellan gum, collagen, PEG and GelMA hydrogel after 7 days of culture (nuclei = DAPI (blue)), showing poor cell migration in gellan gum towards the top of the gel, image of Y201 cells in collagen showing some level of cell migration towards the top of the gel, image of Y201 cells in PEG and gelMA hydrogel after 7 days of culture, showing good cell migration towards the top of the gel. (c) Table summarizing the properties of the four hydrogel systems screened, showing that gelMA outperforms all the other gels, due to its tuneable chemistry and capacity to sustain cell viability and migration.

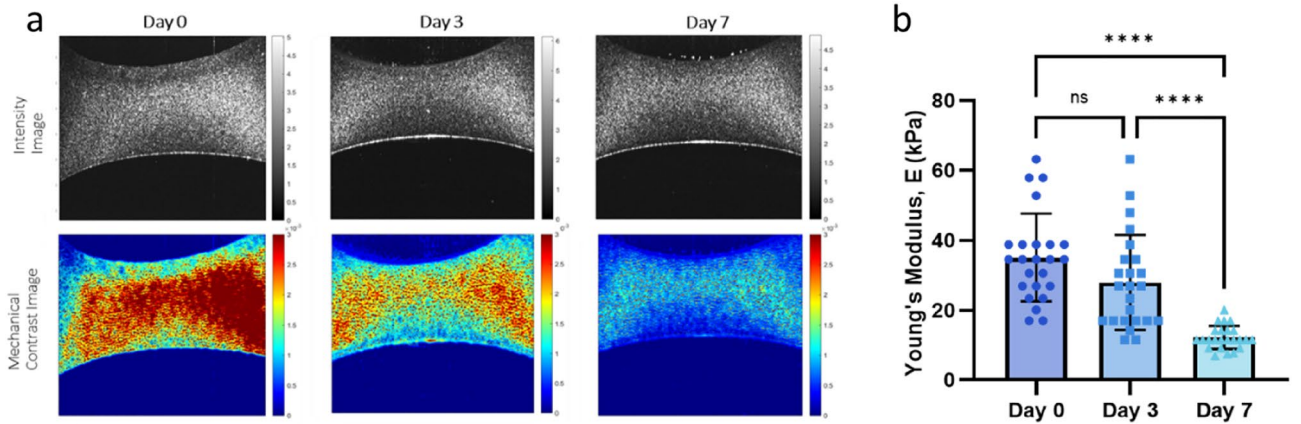


Figure 4. Mechanical profiling of the GelMA hydrogels following culture for 0,3 and 7 days. (a) Representations of depth imaging using intensity (top) and mechanical contrast (bottom) images of hydrogels on days 0, 3 and 7. (b) Calculated Young's modulus for the homogenous 4% GelMA gels from debiased ambient vibration OCE analysis (^{ns} $p > 0.05$; ^{****} $p < 0.0001$).

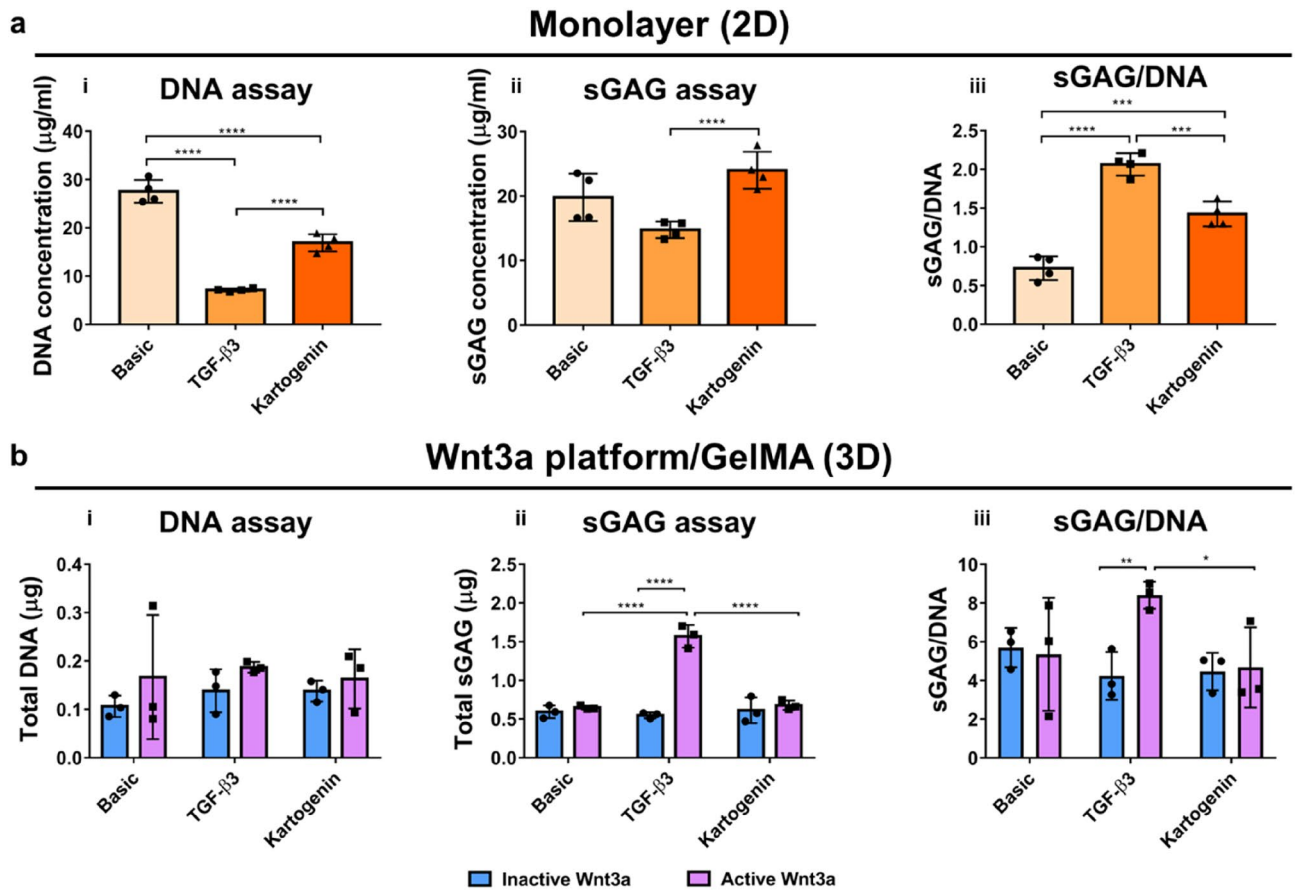


Figure 5. TGF-β3 and kartogenin have different chondro-inductive effects in 2D and 3D. (a) (i) DNA concentration, (ii) sGAG concentration and (iii) sGAG/DNA performed on Y201 cells cultured in monolayer (2D) indicate the potential chondro-inductive behavior of kartogenin in a 2D model (^{***} $p < 0.001$; ^{****} $p < 0.0001$). (b) (i) DNA content, (ii) sGAG production and (iii) sGAG/DNA performed on Y201 cells cultured in the Wnt3a platform/GelMA system indicate that TGF-β3 is chondro-inductive, while kartogenin does not enhance differentiation compared to basic condition in the 3D model (^{*} $p < 0.05$; ^{**} $p < 0.01$; ^{****} $p < 0.0001$).

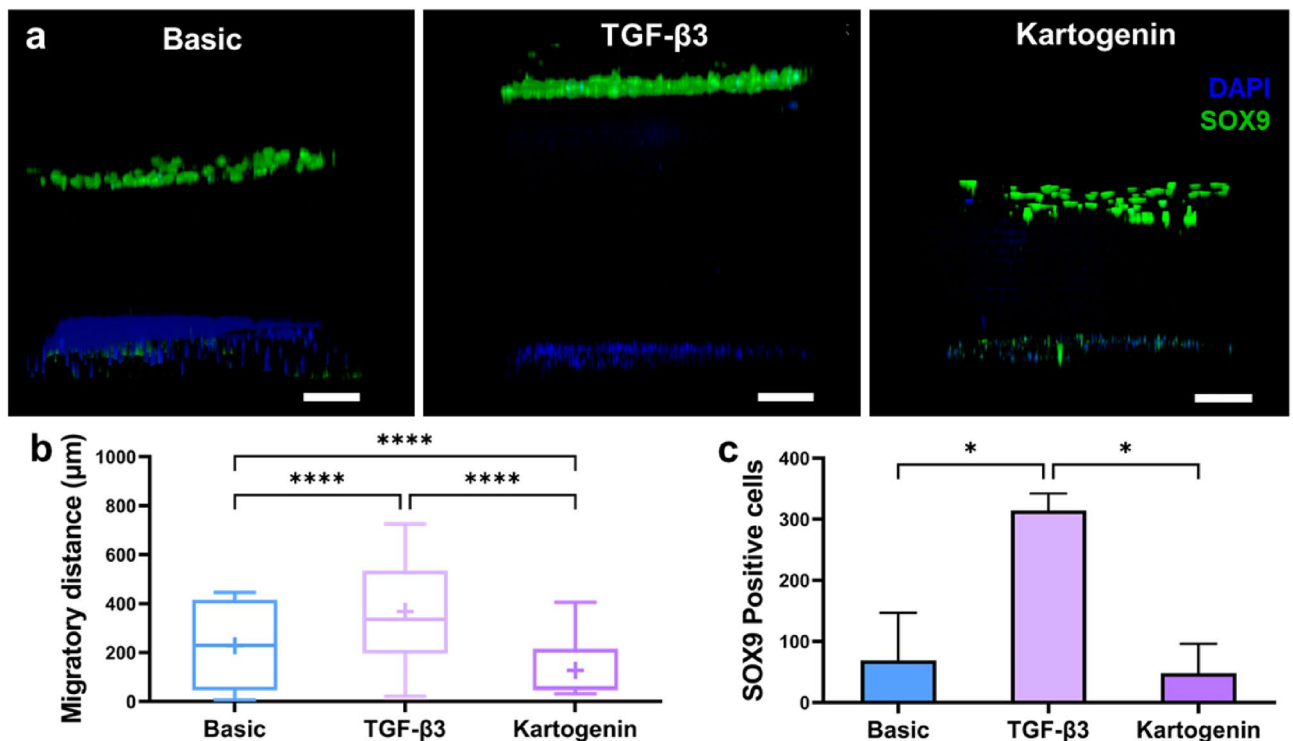


Figure 6. Cells migrate to the top of the gel and differentiate in the 3D regenerative model. (a) Representative immunofluorescence 3D image of Y201 cells after 7 days of culture, showing cell migration and differentiation towards the top of the gel in basic conditions (left), and in presence of TGF- β 3 (center) and kartogenin (right) (nuclei = blue; SOX9 = green). Scale bars = 100 μ m. (b) Quantification of cell migration, showing a significant increase in migratory distance in TGF- β 3-treated samples compared to basic and kartogenin counterparts (data shown as median in interquartile range \pm min/max and + symbol indicates mean value; **** p < 0.0001). (c) Quantification of SOX9 positive cells in the upper region of the gel shows increased differentiation in TGF- β 3-treated samples compared to basic and kartogenin counterparts (* p < 0.05).

Wnt3a led to enhanced cell proliferation, indicating the activity of the Wnt/ β -catenin pathway, which plays a critical role in cartilage development and regeneration, aligning with findings from other studies¹³. The activation of the TCF/LEF reporter by Wnt3a further supports the functionality of the Wnt signaling pathway in Y201 cells, similar to what has been reported²⁰. Amongst the potential hydrogels screened, GelMA demonstrated the most appropriate properties, including tunable chemistry and support for cell viability and migration, making it the optimal choice for the 3D cartilage model. This finding is consistent with previous reports where GelMA hydrogels were shown to provide a suitable microenvironment for chondrogenic differentiation and support cartilage-specific ECM production^{9,10}.

In the 3D cartilage model, TGF- β 3 and kartogenin were used for validation and to investigate differences in responses between the 2D and 3D systems. While both compounds reduced cell proliferation in 2D monolayer culture, the 3D model showed no significant differences among all groups, indicating that the GelMA hydrogel platform supports cell viability and proliferation. These observations align with previous studies demonstrating the importance of the 3D environment in maintaining cell viability, migration and proliferation rates⁵. The initial mechanical properties of photo crosslinked GelMA closely resembled those reported in previous studies^{7,34}. Notably, there was no significant reduction in the Young's modulus observed at day 3, indicating the hydrogels' stability during this critical initial period. This stability is crucial as it supports cell migration and the three-dimensional culture of cells. However, it's noteworthy that a significant reduction in mechanical properties became evident after 7 days. This decline can be attributed to the biodegradation of GelMA, a process governed by fundamental mechanisms, such as hydrolysis and enzymatic degradation^{35,36}. In one of the studies, GelMA demonstrated a degradation rate when exposed to DPBS with a recorded weight loss of 19.56% after a 7-day period in the degradation assay³⁷. In addition, Zhao et al.³⁸ conducted a study to assess the degradation kinetics, in which GelMA hydrogels were immersed in a collagenase solution. The results of this investigation indicated a decrease in degradation rate with increasing GelMA concentrations. Specifically, it was observed that GelMA hydrogels containing as little as 5% GelMA achieved complete degradation in less than 3 days, while those with higher concentrations, such as 20% GelMA, displayed extended degradation periods of up to 8 weeks³⁸. Consequently, given our choice of 7 days for evaluation, we observed a significant reduction in the mechanical properties of our GelMA models, aligning with the expected biodegradation trend observed in other studies. This observed decrease in mechanical properties over time highlights the biocompatible nature of GelMA for our cartilage tissue engineering models, as it allows the hydrogel to gradually yield to the produced ECM's mechanical properties to mimic native tissue properties.

Furthermore, TGF- β 3 significantly increased the production of cartilage-specific ECM (sGAG) and the number of SOX9-positive chondrocytes, suggesting its chondrogenic potential within the 3D model. These results are consistent with other studies that have shown the chondro-inductive effects of TGF- β 3 in promoting sGAG production and chondrogenic differentiation²⁵. The effects of TGF- β 3 were observed consistently across 2D and 3D models. Kartogenin, on the other hand, inhibited cell migration and showed limited enhancement of chondrogenic differentiation in the 3D models compared to the 2D, which is in line with studies reporting variable outcomes with kartogenin treatment^{39,40}. The combination of TGF- β 3 and immobilized active Wnt3a within the GelMA hydrogel showed enhanced chondrogenic differentiation, as evidenced by the increased sGAG production and SOX9-positive cell population. In our 3D model, we observed Y201 cell migration towards the upper surface of the gel system, accompanied by asymmetric cell division, providing evidence for chondrogenic commitment. These observations align with known Wnt3a effects reported in the literature, where it has been demonstrated to exert a significant influence on asymmetric cell division^{18,19} and cell migration^{16,17}. In addition, these findings are also consistent with the potential synergistic effects of Wnt3a^{41,42} and TGF- β 3 in promoting chondrogenic differentiation and ECM production^{43,44}. Therefore, our findings align with previous reports on the suitability of GelMA hydrogel for cartilage tissue engineering, the chondrogenic potential of Y201 cells, and the role of Wnt3a and TGF- β 3 in promoting chondrogenic differentiation and ECM production. Moreover, the comparison of our data with other studies highlights the unique advantages of our model, such as the integration of 3D architecture, the use of GelMA hydrogel, and the combination of Wnt3a and TGF- β 3 for enhanced chondrogenic outcomes.

In conclusion, the 3D regenerative cartilage model developed in this study offers a valuable tool for investigating cartilage biology, disease mechanisms, and for scale-up in drug screening applications. Our data support the potential of this model for cartilage tissue engineering and provide insights into cartilage regeneration mechanisms in a cartilage repair environment. Furthermore, we have validated the robustness of our model and its potential to discover novel therapeutic approaches for cartilage repair and osteoarthritis treatment. Continued optimization and validation of this model will contribute to the advancement of cartilage tissue engineering and accelerate the development of effective therapies for cartilage regeneration in response to diseases such as Osteoarthritis.

Data availability

The datasets used and/or analysed during the current study available from the corresponding author on reasonable request.

Received: 12 March 2024; Accepted: 25 June 2024

Published online: 01 July 2024

References

1. Thorp, H. *et al.* Trends in articular cartilage tissue engineering: 3D mesenchymal stem cell sheets as candidates for engineered hyaline-like cartilage. *Cells* **10**, 643 (2021).
2. Foster, N. C., Hall, N. M. & El Haj, A. J. Two-dimensional and three-dimensional cartilage model platforms for drug evaluation and high-throughput screening assays. *Tissue Eng. Part B Rev.* **28**, 421–436 (2022).
3. Ahearne, M., Yang, Y., El Haj, A. J., Then, K. Y. & Liu, K.-K. Characterizing the viscoelastic properties of thin hydrogel-based constructs for tissue engineering applications. *J. R. Soc. Interface* **2**, 455–463 (2005).
4. Rose, J. B. *et al.* Gelatin-based materials in ocular tissue engineering. *Materials (Basel)* **7**, 3106–3135 (2014).
5. Foster, N. C., Henstock, J. R., Reinwald, Y. & El Haj, A. J. Dynamic 3D culture: Models of chondrogenesis and endochondral ossification. *Birth Defects Res. Part C Embryo Today Rev.* **105**, 19–33 (2015).
6. Chakraborty, J. *et al.* Development of 4D-bioprinted shape-morphing magnetic constructs for cartilage regeneration using a silk fibroin-gelatin bioink. *Cell Rep. Phys. Sci.* (2024).
7. Seo, J. *et al.* Interconnectable dynamic compression bioreactors for combinatorial screening of cell mechanobiology in three dimensions. *ACS Appl. Mater. Interfaces* **10**, 13293–13303 (2018).
8. Kurian, A. G., Singh, R. K., Patel, K. D., Lee, J.-H. & Kim, H.-W. Multifunctional GelMA platforms with nanomaterials for advanced tissue therapeutics. *Bioact. Mater.* **8**, 267–295 (2022).
9. Wang, G. *et al.* Chondrocyte spheroids laden in GelMA/HAMA hybrid hydrogel for tissue-engineered cartilage with enhanced proliferation, better phenotype maintenance, and natural morphological structure. *Gels* **7**, 247 (2021).
10. Machado, I. *et al.* Marine gelatin-methacryloyl-based hydrogels as cell templates for cartilage tissue engineering. *Polymers (Basel)* **15**, 1674 (2023).
11. Chakraborty, J. *et al.* Development of a biomimetic arch-like 3D bioprinted construct for cartilage regeneration using gelatin methacryloyl and silk fibroin-gelatin bioinks. *Biofabrication* **15**, 35009 (2023).
12. Huang, B. *et al.* Hydrogel composite scaffolds achieve recruitment and chondrogenesis in cartilage tissue engineering applications. *J. Nanobiotechnol.* **20**, 25 (2022).
13. Li, X. *et al.* Role of Wnt signaling pathway in joint development and cartilage degeneration. *Front. Cell Dev. Biol.* **11**, 1181619 (2023).
14. Thomas, B. L. *et al.* WNT3A-loaded exosomes enable cartilage repair. *J. Extracell. Vesicles* **10**, e12088 (2021).
15. Thorup, A.-S. *et al.* In vivo potency assay for the screening of bioactive molecules on cartilage formation. *Lab Anim. (NY)* **51**, 103–120 (2022).
16. Liu, Z., Kuna, V. K., Xu, B. & Sumitran-Holgersson, S. Wnt ligands 3a and 5a regulate proliferation and migration in human fetal liver progenitor cells. *Transl. Gastroenterol. Hepatol.* **6**, 56 (2021).
17. Junyent, S. *et al.* Wnt-and glutamate-receptors orchestrate stem cell dynamics and asymmetric cell division. *Elife* **10**, e59791 (2021).
18. Lowndes, M., Rotherham, M., Price, J. C., El Haj, A. J. & Habib, S. J. Immobilized WNT proteins act as a stem cell niche for tissue engineering. *Stem Cell Rep.* **7**, 126–137 (2016).
19. Okuchi, Y. *et al.* Wnt-modified materials mediate asymmetric stem cell division to direct human osteogenic tissue formation for bone repair. *Nat. Mater.* **20**, 108–118 (2021).
20. Yasuhara, R. *et al.* Roles of β -catenin signaling in phenotypic expression and proliferation of articular cartilage superficial zone cells. *Lab. Invest.* **91**, 1739–1752 (2011).
21. Nalesso, G. *et al.* WNT-3A modulates articular chondrocyte phenotype by activating both canonical and noncanonical pathways. *J. Cell Biol.* **193**, 551–564 (2011).

22. Luyten, F. P., Tylzanowski, P. & Lories, R. J. Wnt signaling and osteoarthritis. *Bone* **44**, 522–527 (2009).
23. Cheverud, J. M. *et al.* Fine-mapping quantitative trait loci affecting murine external ear tissue regeneration in the LG/J by SM/J advanced intercross line. *Heredity (Edinb)* **112**, 508–518 (2014).
24. Scalzone, A. *et al.* The interplay between chondrocyte spheroids and mesenchymal stem cells boosts cartilage regeneration within a 3D natural-based hydrogel. *Sci. Rep.* **9**, 14630 (2019).
25. Somoza, R. A., Welter, J. F., Correa, D. & Caplan, A. I. Chondrogenic differentiation of mesenchymal stem cells: challenges and unfulfilled expectations. *Tissue Eng. Part B Rev.* **20**, 596–608 (2014).
26. James, S. *et al.* Multiparameter analysis of human bone marrow stromal cells identifies distinct immunomodulatory and differentiation-competent subtypes. *Stem cell Rep.* **4**, 1004–1015 (2015).
27. Scalzone, A., Wang, X. N., Dalgarno, K., Ferreira, A. M. & Gentile, P. A chondrosphere-based scaffold free approach to manufacture an in vitro articular cartilage model. *Tissue Eng. Part A* **28**, 84–93 (2022).
28. Scalzone, A. *et al.* A cytokine-induced spheroid-based in vitro model for studying osteoarthritis pathogenesis. *Front. Bioeng. Biotechnol.* **11**, 1167623 (2023).
29. Fuerer, C. & Nusse, R. Lentiviral vectors to probe and manipulate the Wnt signaling pathway. *PLoS One* **5**, e9370 (2010).
30. Penick, K. J., Solchaga, L. A. & Welter, J. F. High-throughput aggregate culture system to assess the chondrogenic potential of mesenchymal stem cells. *Biotechniques* **39**, 687–691 (2005).
31. Livak, K. J. & Schmittgen, T. D. Analysis of relative gene expression data using real-time quantitative PCR and the 2⁻ΔΔCT method. *Methods* **25**, 402–408 (2001).
32. Barroso, I. A., Man, K., Robinson, T. E., Cox, S. C. & Ghag, A. K. Photocurable gelma adhesives for corneal perforations. *Bioengineering* **9**, 53 (2022).
33. Mason, J. H. *et al.* Debaised ambient vibrations optical coherence elastography to profile cell, organoid and tissue mechanical properties. *Commun. Biol.* **6**, 543 (2023).
34. Rizwan, M., Chan, S. W., Comeau, P. A., Willett, T. L. & Yim, E. K. F. Effect of sterilization treatment on mechanical properties, biodegradation, bioactivity and printability of GelMA hydrogels. *Biomed. Mater.* **15**, 65017 (2020).
35. Tondera, C. *et al.* Gelatin-based hydrogel degradation and tissue interaction in vivo: insights from multimodal preclinical imaging in immunocompetent nude mice. *Theranostics* **6**, 2114 (2016).
36. Ullm, S. *et al.* Biocompatibility and inflammatory response in vitro and in vivo to gelatin-based biomaterials with tailorable elastic properties. *Biomaterials* **35**, 9755–9766 (2014).
37. Heltmann-Meyer, S. *et al.* Gelatin methacryloyl is a slow degrading material allowing vascularization and long-term use in vivo. *Biomed. Mater.* **16**, 65004 (2021).
38. Zhao, X. *et al.* Photocrosslinkable gelatin hydrogel for epidermal tissue engineering. *Adv. Healthc. Mater.* **5**, 108–118 (2016).
39. Chen, C.-Y., Li, C., Ke, C.-J., Sun, J.-S. & Lin, F.-H. Kartogenin enhances chondrogenic differentiation of MSCs in 3D tri-copolymer scaffolds and the self-designed bioreactor system. *Biomolecules* **11**, 115 (2021).
40. Spakova, T. *et al.* Influence of kartogenin on chondrogenic differentiation of human bone marrow-derived MSCs in 2D culture and in co-cultivation with OA osteochondral explant. *Molecules* **23**, 181 (2018).
41. Green, J. D. *et al.* Multifaceted signaling regulators of chondrogenesis: Implications in cartilage regeneration and tissue engineering. *Genes Dis.* **2**, 307–327 (2015).
42. Wu, C.-L. *et al.* Single cell transcriptomic analysis of human pluripotent stem cell chondrogenesis. *Nat. Commun.* **12**, 362 (2021).
43. Zhang, Y., Huang, X. & Yuan, Y. MicroRNA-410 promotes chondrogenic differentiation of human bone marrow mesenchymal stem cells through down-regulating Wnt3a. *Am. J. Transl. Res.* **9**, 136 (2017).
44. Du, X., Cai, L., Xie, J. & Zhou, X. The role of TGF-β3 in cartilage development and osteoarthritis. *Bone Res.* **11**, 2 (2023).

Acknowledgements

We would like to acknowledge and thank Professor Shukry Habib, University of Lausanne, for early discussions into the development of this model. This study was funded by the MRC UKRMP Hub The Engineered Cell Environment (MR/R015635/1), the ERC Advanced Grant DYNACEUTICS (grant no. 789119), National Institute for Health and Care Research (NIHR) Birmingham Biomedical Research Centre (BRC), the Turkish Government (Turkiye Ministry of National Education), and SHIFT: Shaping Innovative Designs for Sustainable Tissue Engineering Products, under the scheme of MSCA-RISE - Marie Skłodowska-Curie Research and Innovation Staff Exchange (RISE; Funder Award Reference: 101008041).

Author contributions

A.I.: Conceptualization, Data curation, Formal analysis, Investigation, Methodology, Validation, Writing – original draft, Writing – review & editing. N.C.F.: Conceptualization, Data curation, Formal analysis, Investigation, Methodology, Validation, Writing – review & editing. H.H.: Conceptualization, Data curation, Formal analysis, Investigation, Methodology, Supervision, Validation, Writing – original draft, Writing – review & editing. K.E.O.: Data curation, Formal analysis, Investigation, Methodology, Validation, Writing – original draft, Writing – review & editing. A.L.W.: Data curation, Formal analysis, Investigation, Methodology, Writing – review & editing. I.A.B.: Investigation, Methodology. A.J.E.H.: Conceptualization, Funding acquisition, Methodology, Project administration, Resources, Supervision, Writing – original draft, Writing – review & editing. All authors have approved the final version of the manuscript.

Competing interests

The authors declare no competing interests.

Additional information

Supplementary Information The online version contains supplementary material available at <https://doi.org/10.1038/s41598-024-65970-w>.

Correspondence and requests for materials should be addressed to H.H. or A.J.E.H.

Reprints and permissions information is available at www.nature.com/reprints.

Publisher's note Springer Nature remains neutral with regard to jurisdictional claims in published maps and institutional affiliations.



Open Access This article is licensed under a Creative Commons Attribution 4.0 International License, which permits use, sharing, adaptation, distribution and reproduction in any medium or format, as long as you give appropriate credit to the original author(s) and the source, provide a link to the Creative Commons licence, and indicate if changes were made. The images or other third party material in this article are included in the article's Creative Commons licence, unless indicated otherwise in a credit line to the material. If material is not included in the article's Creative Commons licence and your intended use is not permitted by statutory regulation or exceeds the permitted use, you will need to obtain permission directly from the copyright holder. To view a copy of this licence, visit <http://creativecommons.org/licenses/by/4.0/>.

© The Author(s) 2024