

Winter 2-23-2016

A continental analysis of ecosystem vulnerability to atmospheric nitrogen deposition

Samuel M. Simkin

Edith B. Allen

William D. Bowman

Christopher M. Clark

Jayne Belnap

See next page for additional authors

Follow this and additional works at: http://mds.marshall.edu/bio_sciences_faculty



Part of the [Other Life Sciences Commons](#), and the [Systems Biology Commons](#)

Recommended Citation

Simkin SM, EB Allen, WD Bowman, CM Clark, J Belnap, ML Brooks, BS Cade, SL Collins, LH Geiser, FS Gilliam, SE Jovan, LH Pardo, BK Schulz, CJ Stevens, KN Suding, HL Throop, and DM Waller. 2016. A continental analysis of ecosystem vulnerability to atmospheric nitrogen deposition. *Proceedings of the National Academy of Sciences* 113:4086–4091.

This Article is brought to you for free and open access by the Biological Sciences at Marshall Digital Scholar. It has been accepted for inclusion in Biological Sciences Faculty Research by an authorized administrator of Marshall Digital Scholar. For more information, please contact zhangj@marshall.edu, martj@marshall.edu.

Authors

Samuel M. Simkin, Edith B. Allen, William D. Bowman, Christopher M. Clark, Jayne Belnap, Matthew L. Brooks, Brian S. Cade, Scott L. Collins, Linda H. Geiser, Frank S. Gilliam, Sarah E. Jovan, Linda H. Pardo, Bethany K. Schulz, Carly J. Stevens, Katharine N. Suding, Heather L. Throop, and Donald M. Waller

Conditional vulnerability of plant diversity to atmospheric nitrogen deposition across the United States

Samuel M. Simkin^{a,1}, Edith B. Allen^{b,c}, William D. Bowman^a, Christopher M. Clark^d, Jayne Belnap^e, Matthew L. Brooks^f, Brian S. Cade^g, Scott L. Collins^h, Linda H. Geiserⁱ, Frank S. Gilliam^j, Sarah E. Jovan^k, Linda H. Pardo^l, Bethany K. Schulz^m, Carly J. Stevensⁿ, Katharine N. Suding^a, Heather L. Throop^{o,p}, and Donald M. Waller^q

^aInstitute of Arctic and Alpine Research and Department of Ecology and Evolutionary Biology, University of Colorado, Boulder, CO 80309; ^bDepartment of Botany and Plant Sciences, University of California, Riverside, CA 92521; ^cCenter for Conservation Biology, University of California, Riverside, CA 92521; ^dNational Center for Environmental Assessment, United States Environmental Protection Agency, Washington, DC 20460; ^eSouthwest Biological Science Center, United States Geological Survey, Moab, UT 84532; ^fWestern Ecological Research Center, United States Geological Survey, Oakhurst, CA 93644; ^gFort Collins Science Center, United States Geological Survey, Fort Collins, CO 80226; ^hDepartment of Biology, University of New Mexico, Albuquerque, NM 87131; ⁱPacific Northwest Region Air Resource Management Program, United States Department of Agriculture Forest Service, Corvallis, OR 97339; ^jDepartment of Biological Sciences, Marshall University, Huntington, WV 25755; ^kForest Inventory and Analysis Program, United States Department of Agriculture Forest Service, Portland, OR 97339; ^lNorthern Research Station, United States Department of Agriculture Forest Service, Burlington, VT 05405; ^mForest Inventory and Analysis Program, United States Department of Agriculture Forest Service, Anchorage, AK 99501; ⁿLancaster Environment Centre, Lancaster University, Lancaster LA1 4YQ, United Kingdom; ^oSchool of Earth and Space Exploration, Arizona State University, Tempe, AZ 85287; ^pSchool of Life Sciences, Arizona State University, Tempe, AZ 85287; and ^qDepartment of Botany, University of Wisconsin, Madison, WI 53706

Edited by Sarah E. Hobbie, University of Minnesota, Saint Paul, Saint Paul, MN, and approved February 23, 2016 (received for review August 4, 2015)

Atmospheric nitrogen (N) deposition has been shown to decrease plant species richness along regional deposition gradients in Europe and in experimental manipulations. However, the general response of species richness to N deposition across different vegetation types, soil conditions, and climates remains largely unknown even though responses may be contingent on these environmental factors. We assessed the effect of N deposition on herbaceous richness for 15,136 forest, woodland, shrubland, and grassland sites across the continental United States, to address how edaphic and climatic conditions altered vulnerability to this stressor. In our dataset, with N deposition ranging from 1 to 19 kg N·ha⁻¹·y⁻¹, we found a unimodal relationship; richness increased at low deposition levels and decreased above 8.7 and 13.4 kg N·ha⁻¹·y⁻¹ in open and closed-canopy vegetation, respectively. N deposition exceeded critical loads for loss of plant species richness in 24% of 15,136 sites examined nationwide. There were negative relationships between species richness and N deposition in 36% of 44 community gradients. Vulnerability to N deposition was consistently higher in more acidic soils whereas the moderating roles of temperature and precipitation varied across scales. We demonstrate here that negative relationships between N deposition and species richness are common, albeit not universal, and that fine-scale processes can moderate vegetation responses to N deposition. Our results highlight the importance of contingent factors when estimating ecosystem vulnerability to N deposition and suggest that N deposition is affecting species richness in forested and nonforested systems across much of the continental United States.

nitrogen deposition | plant species richness | diversity | soil pH | climate

Global emissions of reactive nitrogen (N) to the atmosphere and subsequent deposition into terrestrial ecosystems have tripled in the last century (1). This N deposition has been identified as a threat to plant diversity (2–4), and plant diversity is linked to ecosystem stability (5), productivity (6), and other ecosystem services (7). Elevated nitrogen inputs have been shown to cause decreases in species richness over time in small plot experiments (8–10) and in regional gradient studies in Europe (11, 12). Although these studies and others have led to some generalizations about the impacts of N deposition on plant diversity, most of these studies have focused on grassland ecosystems and/or, in the United States, have been fine-scale field experiments where N is added experimentally as fertilizer. Thus, translation of these findings to nongrassland systems or to large regions of the

United States may not be appropriate. Unlike grasslands, where elevated N has often led to light limitations and subsequent competitive exclusion (13), plant growth in the herbaceous layers of forest understories is typically primarily light-limited (14) regardless of the extent of N inputs. Moreover, soil chemistry can be heterogeneous, influencing the potential of soil acidification by nitrogen deposition (15). In most arid ecosystems, moisture may be more important than nutrients in controlling plant growth during the growing season (16, 17). Finally, the level of N input at which diversity is first impacted (18) is often unknown for many regions because most studies use a fairly coarse experimental approach to estimate thresholds of response or have been conducted where there have already been high inputs of N for decades (e.g., Northern Europe). To address these critical gaps in our knowledge of continental-scale relationships between N deposition and plant diversity, we used data from herbaceous ground-layer communities within 15,136 forest, woodland, shrubland, and grassland sites spanning N deposition gradients across the continental

Significance

Human activities have elevated nitrogen (N) deposition and there is evidence that deposition impacts species diversity, but spatially extensive and context-specific estimates of N loads at which species losses begin remain elusive. Across a wide range of climates, soil conditions, and vegetation types in the United States, we found that 24% of >15,000 sites were susceptible to N deposition-induced species loss. Grasslands, shrublands, and woodlands were susceptible to species losses at lower loads of N deposition than forests, and susceptibility to species losses increased in acidic soils. These findings are pertinent to the protection of biodiversity and human welfare and should be considered when establishing air quality standards.

Author contributions: S.M.S., E.B.A., W.D.B., C.M.C., J.B., and M.L.B. designed research; S.M.S., E.B.A., W.D.B., and C.M.C. performed research; S.M.S. and C.M.C. analyzed data; and S.M.S., E.B.A., W.D.B., C.M.C., J.B., M.L.B., B.S.C., S.L.C., L.H.G., F.S.G., S.E.J., L.H.P., B.K.S., C.J.S., K.N.S., H.L.T., and D.M.W. wrote the paper.

The authors declare no conflict of interest.

This article is a PNAS Direct Submission.

Data deposition: The data reported in this article have been deposited in the Dryad Digital Repository, datadryad.org (doi: 10.5061/dryad.7kn53).

¹To whom correspondence should be addressed. Email: samuel.simkin@colorado.edu.

This article contains supporting information online at www.pnas.org/lookup/suppl/doi:10.1073/pnas.1515241113/-DCSupplemental.

United States. More specifically, we assessed how covarying climate and edaphic factors affected ecosystem vulnerability to N deposition.

Nitrogen inputs can increase diversity, decrease diversity, or leave diversity unchanged, contingent on a host of associated ecosystem factors. Biodiversity can be reduced through several general mechanisms (4), including but not limited to (i) release from N limitation that leads to increased aboveground production, reduced light availability, and ultimately competitive exclusion (13, 19) and (ii) soil acidification and associated cation depletion and imbalances that lead to recruitment inhibitions (20, 21). The importance of N limitation likely declines in arid areas that are more moisture-limited or in warm, wet areas favoring high net N mineralization, either one of which may reduce the importance of external N inputs. In such cases, N may be less limiting to plant growth, and therefore communities are less responsive to additional N deposition (2). Conversely, enrichment may increase biodiversity in extremely N-poor environments where release from N limitation does not result in competitive exclusion (22, 23) or where soils have a high pH resistant to soil acidification (11, 24).

Because N enrichment can affect plant diversity through multiple pathways and environmental contingencies, we investigated whether N deposition is a widespread threat to plant species diversity or whether some vegetation types or environments are more vulnerable than others. We compiled herbaceous plant species composition data from existing datasets (Table S1) that included 15,136 sites and 3,852 herbaceous species from across the continental United States. At each site, we calculated species richness, the total number of unique species per plot, a commonly used metric of diversity (25). We then extracted geospatial estimates (Table S2) of N deposition, annual precipitation, mean annual temperature, and soil pH for each site. As in several previous studies in Europe (11, 12, 26), we used a correlative approach that cannot show direct causality but can nevertheless provide insight into the mechanisms involved in, and communities most susceptible to, loss of diversity as a result of N deposition. First, we analyzed relationships between plant species richness and N deposition involving interactions with precipitation, temperature, and soil pH within two broadly defined vegetation types (closed canopy forest vs. open canopy grasslands, shrublands, and woodlands). We then examined the same set of predictors within

Table 1. Parameter coefficients for species richness from median quantile regressions

Name	Open canopy (± 1 SE)	Closed canopy (± 1 SE)
Intercept	14.9 (3.42)*	13.6 (2.55)*
N	4.69 (0.60)*	0.449 (0.33) ⁿ
N ²	-0.494 (0.02)*	-0.125 (0.01)*
pH	-2.17 (0.46)*	-1.49 (0.37)*
Precip	-0.011 (0.002)*	-0.003 (0.001)*
Temp	-0.059 (0.18) ⁿ	-0.321 (0.04)*
N:pH	0.475 (0.07)*	0.543 (0.04)*
N:precip	0.002 (0.001)*	NA
N:temp	-0.073 (0.03) ⁺	NA

Regressions represent herbaceous plant species richness response to N deposition ($\text{kg}\cdot\text{ha}^{-1}\cdot\text{y}^{-1}$; quadratic), soil pH, total annual precipitation (mm), average annual temperature ($^{\circ}\text{C}$), and interactions of N (deposition) with pH, precipitation, and temperature. An NA (not applicable) indicates that term didn't appear in best model. Sample size is 11,819 sites for closed canopy (deciduous forest, evergreen forest, and mixed forest) and 3,317 sites for open canopy (grassland, shrubland, and woodland). Level of significance is indicated as follows: ⁿ $P \geq 0.05$, ⁺ $P < 0.05$, or * $P < 0.001$.

gradients defined by unique combinations of specific vegetation communities and source datasets that spanned an adequate range of N deposition (Methods and Table S3).

Results and Discussion

National-Scale N Deposition Critical Loads and Exceedances Analyses.

At a national scale, separating sites into open canopy (grassland, shrubland, and woodland) versus closed canopy (forested) vegetation types, we found that herbaceous plant species richness was best explained by N deposition (R^2 coefficient of determination = 0.10 and 0.05 for open and closed vegetation, respectively), followed by soil pH ($R^2 = 0.02$ and 0.04 for open and closed vegetation, respectively), temperature ($R^2 = 0.04$ and 0.01 for open and closed vegetation, respectively), and precipitation ($R^2 = 0.02$ and 0.004 for open and closed vegetation, respectively). Regression analyses incorporating N deposition interaction effects with other predictors (Table 1) showed strong hump-shaped relationships between herbaceous plant species richness and N deposition in open canopy vegetation (Fig. 1A and Fig. S1 A and B). In open-canopy

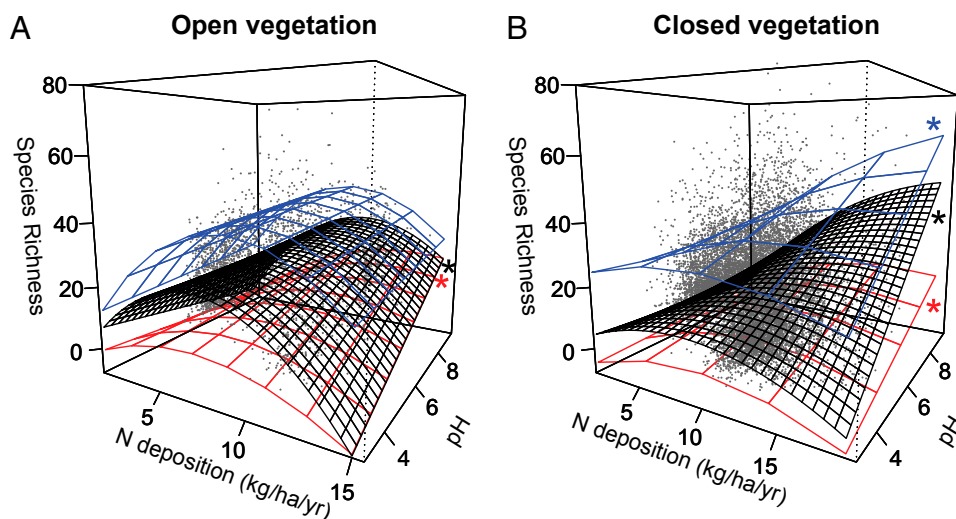


Fig. 1. Herbaceous plant species richness relationships with N deposition. Raw data points ($n = 15,136$ sites) are gray. Surface plots represent 0.1 (red), 0.5 (median; black), and 0.9 (blue) quantile regression models (median parameters in Table 1) fitted to 3,317 open sites (combined grassland, shrubland, and woodland) (A) and 11,819 closed canopy sites (combined deciduous, evergreen, and mixed forests) (B), as influenced by soil pH. Asterisks indicate significant interactions ($P < 0.05$).

Table 2. Critical loads (CLs) of N deposition for herbaceous plant species richness

Vegetation	CL expression (partial derivative of species richness equation)	CL (kg N·ha ⁻¹ ·y ⁻¹)			CL error [§]
		Mean [†]	Range [†]	Range of 95% CI [‡]	
Open canopy vegetation	$[4.690 + (0.475 \cdot (\text{soil pH})) + (0.0018 \cdot (\text{mm of precip.})) + (-0.073 \cdot (\text{temp. } (^{\circ}\text{C})))]/(-2 \cdot -0.494)$	8.7	7.4–10.3	6.4–11.3	–4.5%, 4.8%
Closed canopy vegetation	$[0.449 + (0.543 \cdot (\text{soil pH}))]/(-2 \cdot -0.125)$	13.4	7.9–19.6	6.8–22.2	–6.2%, 7.7%

The critical load (CL) expression is derived using the partial derivative with respect to nitrogen of the species richness equation in Table 1, and then evaluated locally with site-specific soil pH, precipitation, and temperature values.

[†]Mean and range of CLs across sites, reflecting variation in soil pH, precipitation, and temperature variables across sites but not uncertainty in coefficient estimates.

[‡]Range of CL 95% confidence interval endpoints across sites (Fig. S3), reflecting both ecological variability (soil pH and climate variables) and uncertainty in coefficient estimates, with the latter calculated from the 2.5th and 97.5th percentiles of 10,000 Monte Carlo simulations of coefficient uncertainty.

[§]Average of the site-specific CL % errors, calculated from the lower and upper endpoints of the 95% confidence interval of Monte Carlo simulations of coefficient uncertainty repeated at each site.

vegetation, richness declined at lower N deposition levels in more acidic soils—declining with N deposition above 6.5 kg·ha⁻¹·y⁻¹ at a soil pH of 4.5, and declining with N deposition above 8.8 kg·ha⁻¹·y⁻¹ at a soil pH of 7 (Fig. 1A). In closed-canopy conditions, the interaction of N deposition with soil pH was even stronger: At a soil pH of 4.5, richness began declining when N deposition exceeded

11.6 kg·ha⁻¹·y⁻¹, whereas at the highest pH (8.2) there was no evidence of a decline (Fig. 1B). In closed-canopy communities, there was no significant interaction of temperature (Fig. S1C) or precipitation (Fig. S1D) with N deposition in most quantiles.

Our results demonstrate for the first time, to our knowledge, across a wide spatial domain that multiple mechanisms may

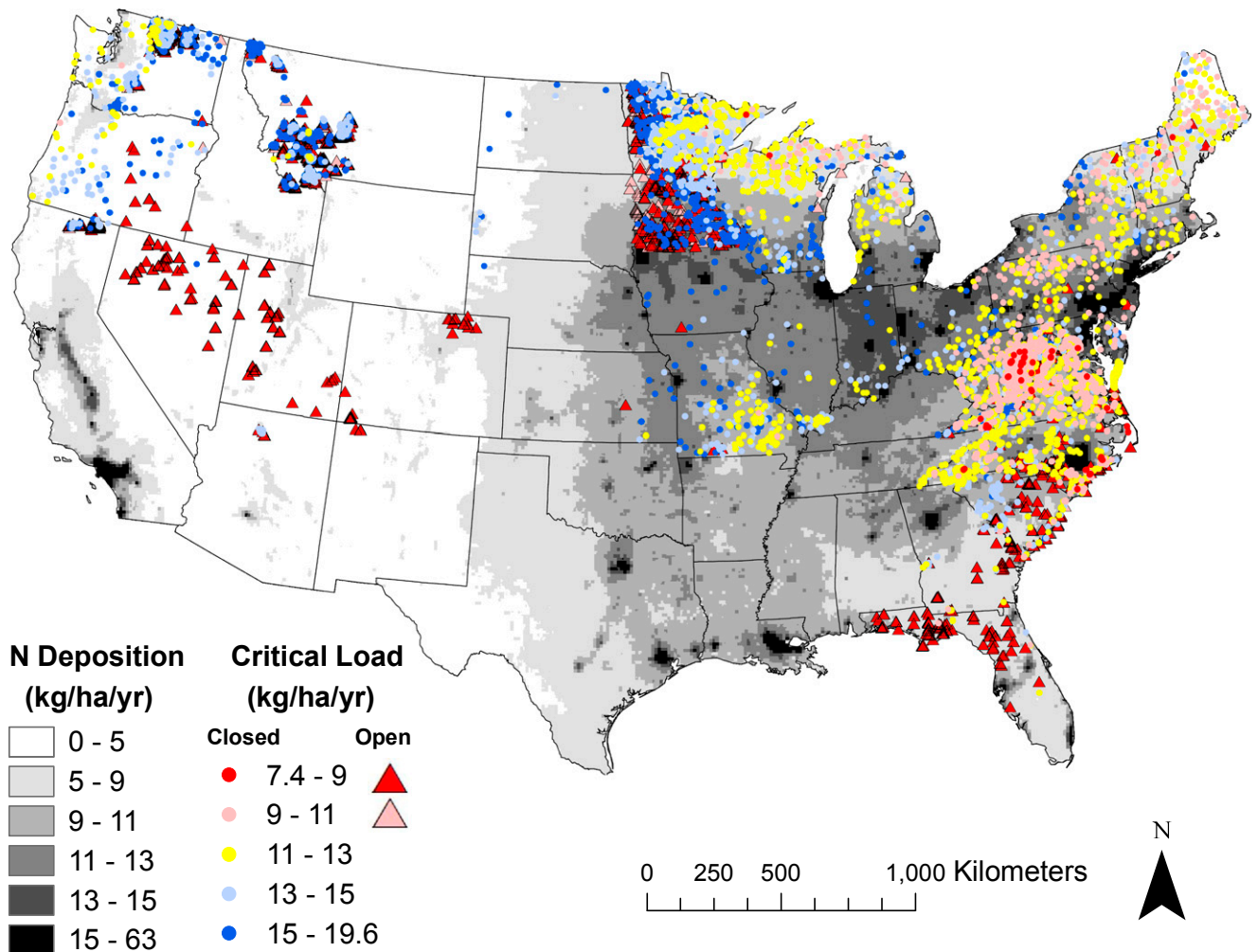


Fig. 2. Nitrogen deposition (gray-scale) and critical loads for nitrogen deposition based on total graminoid plus forb species richness (colored symbols). The 3,317 open sites (combined grassland, shrubland, and woodland vegetation types) are portrayed with triangles, and the 11,819 closed canopy sites (deciduous, evergreen, and mixed forests) are portrayed with circles. Background deposition values are the average of 27 y of wet deposition (NADP 1985–2011) plus the average of 10 y of dry deposition (CMAQ 2002–2011). Other variation in critical loads is due to the other predictor variables (soil pH, temperature, and precipitation).

operate to influence the response of plant species richness to N deposition. A decline in species richness with N deposition at low soil pH in both open and closed canopy systems is consistent with the soil acidification mechanism of species loss (20). At higher soil pH, the patterns found in the two systems diverged. Increased species richness with N deposition in the shaded forest understory is consistent with release from the soil acidification mechanism combined with a limited potential for competitive exclusion through shading—because most understory forest species are already well adapted to shady conditions. In open canopy systems, some species are not well adapted to shady conditions, meaning that, even though release from soil acidification had occurred at higher pH, competitive exclusion from light limitation may still have been a potential factor affecting plant richness (13).

Critical loads of N deposition based on changes in herbaceous plant species richness are defined as the point at which species losses begin to occur (18) and are calculated here by taking the partial derivative with respect to nitrogen of the surfaces in Fig. 1 (and Table 1) and solving for N (*Methods*). Critical loads were generally much lower in open grasslands, shrublands, and woodlands than in closed-canopy forests (Table 2, Fig. 2, and Fig. S2). Critical load estimates were contingent on soil pH (and in open vegetation on climate as well), but parameter uncertainty in the critical load estimates was relatively modest (Table 2 and Figs. S3 and S4). When we subtracted N deposition critical load estimates from N deposition values, we found that 5% of sites had exceedances of 3–8 kg·ha⁻¹·y⁻¹ and 19% had exceedances of up to 3 kg·ha⁻¹·y⁻¹ (Fig. S5). For alternate exceedance calculations, a benefit-of-doubt approach [using upper limit of 95% confidence interval (CI) of the critical load] yields a maximum exceedance of 8.3 kg·ha⁻¹·y⁻¹ and 18% of sites having positive exceedances whereas a precautionary approach (using lower limit of 95% CI of the critical load) yields a maximum of 9.6 kg·ha⁻¹·y⁻¹ and 29% of sites with positive exceedances. If methods change N deposition estimates, then critical loads would also increase or decrease by that same percentage.

When we applied national-scale critical loads equations (Table 2) to specific level 1 ecoregions, we were able to refine (Table S4) previous estimated critical loads (18) as a consequence of using many more data than were previously available across a wider range of environmental conditions. We emphasize that all critical loads of N deposition presented here are for total herbaceous plant species richness from the national analysis and that critical loads may be lower for specific species (23), functional groups (4), or ecoregions.

Furthermore, when we calculated critical load estimates (Table 2) for specific sites using our national-scale equations (Table 1), we found that they were consistent with experimental data from long-term N additions. Our critical load estimate of 8.4 kg N·ha⁻¹·y⁻¹ for grassland at the Cedar Creek LTER site was consistent with the critical loads estimated there using statistical extrapolation of results from a fertilization experiment (95% inverse prediction interval of 7.3–15.8 kg N·ha⁻¹·y⁻¹) (10). Likewise, our estimated critical load of 11.8 kg N·ha⁻¹·y⁻¹ for forest in the Fernow Experimental Forest was consistent with the interpretation (27) that ambient N deposition already exceeded critical loads before the initiation of experimental additions at Fernow. This consistency of experimental and gradient results strengthens our confidence in our critical load estimates for sites without long-term experimental data.

Finer Scale N Deposition Gradients Within Specific Vegetation Communities. Having just demonstrated relationships between plant species richness and N deposition at a national scale, we now shift our focus to the community scale at which many local land management activities are directed. Within community-scale deposition gradients, we again found that relationships between plant species richness and N deposition were often conditional on soil and climate covariates. Plant species richness declined as N deposition increased in 36.5% of the 44 studied gradients (16% unconditional, 20.5% conditional on a covariate), increased

with N deposition in 18% of the gradients (4.5% unconditional, 13.5% conditional), and showed no relationship with N deposition in 45.5% of gradients (Fig. 3). Most of the gradients where species richness increased with N deposition had N deposition averaging 3 kg N·ha⁻¹·y⁻¹ or less (Fig. 4). Overall, plant species richness was more likely to decline with increasing N deposition along gradients with more acidic soil conditions (Fig. 4A), or warmer (Fig. 4B), wetter (Fig. 4C) climates, broadly consistent with the national analysis. Both the community-level and national-level analyses showed decreases in more acidic conditions, and although the community-level analysis showed declines under warmer conditions, that relationship was present only for open canopy systems for the national analysis. This restricted gradient analysis was possible only in the subset of vegetation types that spanned an adequate N deposition range (Table S3), but its power lies in the capacity to detect relationships missed by national-scale analyses, and the restriction to datasets within similar methodologies and vegetation types to control for any potential spurious relationships.

We demonstrate the context dependency of N deposition effects using the three forested vegetation types (*Acer-Betula* alliances, *Quercus alba* alliances, *Pseudotsuga menziesii* alliances) that were represented in more than three separate gradients (Table S5). In these cases, species richness declines were more readily detected where precipitation and temperature were highest, or where N deposition reached or exceeded 7.5–9.5 kg·ha⁻¹·y⁻¹. Among the four *Acer - Betula* forest gradients, only the gradient with the highest precipitation and temperature showed an unconditional species richness decline with N deposition. Among the six *Q. alba* forest gradients, only the two gradients where N deposition was always greater than 9.5 kg·ha⁻¹·y⁻¹ showed a species richness decline with N deposition. Finally, among the four *P. menziesii* forest and woodland gradients, we observed increases in richness in the three gradients where deposition was always below 4.6 kg·ha⁻¹·y⁻¹, but, in the gradient with up to 7.5 kg·ha⁻¹·y⁻¹, a species decline emerged. Shifts in relationships for the same vegetation type along different N deposition ranges were consistent with the curved response surfaces illustrated in Fig. 1.

In grasslands and shrublands, we hypothesized that the competitive exclusion mechanism of N deposition-induced species loss would be strong because there is greater potential for some herbaceous species to shade or grow faster than other non-shade-tolerant or slower growing herbaceous species. Consistent with this hypothesis, one of three shrubland gradients showed an unconditional decrease in plant species richness with increasing N deposition, even though all shrubland gradients experienced N deposition of 5 kg·ha⁻¹·y⁻¹ or less (Table S5). Shrubbylands experiencing higher N deposition have shown even stronger responses (e.g., native species richness declines in coastal sage scrub with N deposition beyond 8.7 kg·ha⁻¹·y⁻¹) (28). Grassland species richness declined once N deposition exceeded 8 kg·ha⁻¹·y⁻¹ (*Schizachyrium scoparium-Bouteloua curtipendula* and *Andropogon gerardii-Sorghastrum nutans* grasslands in Table S5), consistent with experimental work (10) and a continental-scale study of European grasslands (11).

Scale and Context Dependency of Species Richness Relationships with N Deposition. Our results demonstrate that negative relationships between N deposition and species richness are common, albeit not universal, and that fine-scale processes seem to moderate vegetation responses to N deposition in many areas. This scale-dependency is consistent with the known mechanisms of biodiversity loss (4, 9, 29), all of which may operate simultaneously in ecosystems. At both the national and fine scales, we identified environmental conditions where there was little to no relationship between N deposition and species richness, and conditions under which N deposition increases species richness, which helps place previous work (30, 31) in context, and unifies these conflicting empirical results to ecological theory. We were able

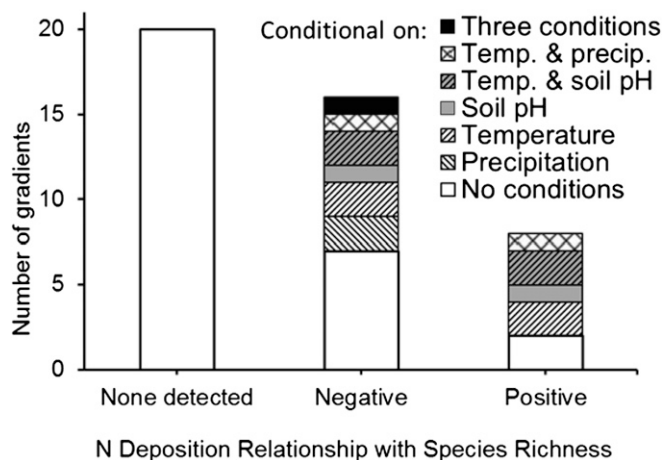


Fig. 3. Summary of relationships between plant species richness and N deposition in 46 gradients. Gradients (uniquely defined by vegetation type and data source) contain 6,807 sites, conditional on soil pH, average annual temperature, annual precipitation, and N deposition interactions with each of the other three predictors. In conditionally negative or positive gradients, the relationship was either negative or positive, respectively, for more than half of the range of the moderating variable(s).

to identify N deposition relationships with species richness by accounting for heterogeneous soil pH and climate factors within distinct vegetation types. As national-scale, high-resolution datasets for other covariates such as herbivory (32) and disturbance history become available, it should be possible to resolve in even finer detail this relationship between N deposition and plant species richness.

Conclusion

Our continental-scale analysis found that the threat of N deposition to herbaceous plant species richness is ecosystem-specific, with some ecosystems more vulnerable than others, and some conditions conferring greater vulnerability. Ecosystems with open vegetation (grasslands, shrublands, and woodlands) had lower critical loads of N deposition ($7.4\text{--}10.3\text{ kg N}\cdot\text{ha}^{-1}\cdot\text{y}^{-1}$) than ecosystems with closed-canopy forest vegetation ($7.9\text{--}19.6\text{ kg N}\cdot\text{ha}^{-1}\cdot\text{y}^{-1}$). Within these broad vegetation groups, declines in species richness along gradients of increasing N deposition were more likely to occur in ecosystems with acidic soils. Climate also interacted with N deposition to help explain species richness, but its influence was less consistent across scales. Increasing the number of N-addition experiments with treatment levels spanning $2\text{--}20\text{ kg}\cdot\text{ha}^{-1}\cdot\text{y}^{-1}$ and implementing them across the full range of soil pH, climate, and vegetation types that exist on the landscape would be a very welcome complement to the correlative work that we have reported here. In the meantime, our work suggests that the mechanism of competitive exclusion via shading is likely of reduced strength in the comparative shade of forest understories whereas the acidification and competitive exclusion mechanisms are probably more likely to occur synergistically in the high-light environment characteristic of grasslands. We successfully identified ecosystems vulnerable to N deposition and refined herb-based N deposition critical loads (18) by incorporating a broad range of vegetation types, N deposition loads, soil substrates, and climate conditions in our analysis. This identification of vulnerable ecosystems and influential environmental factors is critical for managers to set monitoring and conservation priorities.

Methods

Data Acquisition and Management. We compiled vegetation data from multiple sources (Table S1) because a single standardized national dataset of herbaceous plant species presence and abundance with sufficient spatial coverage and plot density is not available for the United States. We retained

only terrestrial sites sampled after 1989 that had a complete inventory of species from graminoid and forb functional groups, quantitative abundance for each plant species, a sampling area of $100\text{--}700\text{ m}^2$, and known geographic coordinates. At each site, we calculated total herbaceous (defined here as forbs and graminoids) plant species richness, a conservative measure because total richness could remain unchanged even as invasive species richness increases and native species richness declines.

We estimated N deposition by adding Community Multiscale Air Quality (CMAQ) model dry deposition estimates to interpolated National Atmospheric Deposition Program (NADP) wet deposition and extracting a value based on coordinates for each site. The CMAQ version 5.0.2 dry deposition estimate was a 10-y average (2002–2011) with 12-km resolution, using models run in 2014 by Robin Dennis at the Environmental Protection Agency (EPA). CMAQ dry deposition estimates, or other comparable estimates with fine resolution, are not yet available at a national scale before 2002. The NADP wet deposition was a 27-y average (1985–2011), which we resampled from the raw 2.33833-km resolution to the 4-km resolution of the Parameter-Elevation Relationships on Independent Slopes Model (PRISM) precipitation data that had been used in the interpolation.

We extracted climate covariates [specifically, average annual precipitation and temperature from 30-y PRISM climate normals (1981–2010)] and obtained soil pH, where available, from the same datasets that supplied vegetation data. If soil data from soil samples collocated with vegetation data were not available, then pH from 1:1 water extracts from the national US Department of Agriculture (USDA) Soil Survey Geographic (SSURGO) database was used. We retained the 15,136 sites with nonmissing species richness and predictor values that met the criteria for analyses at either the national scale (data sources combined but plots filtered based on area) or gradient scale (data sources considered separately).

Data Analysis. For our initial national-scale analysis, we began with all 15,136 sites, and then, based on expected differences in mechanisms, we divided those sites into two broad vegetation types: namely, closed canopy (deciduous forest, evergreen forest, and mixed forest) and open canopy (grassland, shrubland, and woodland) vegetation types. Within each of these two groups, we determined the relative importance of our four primary predictor variables (N deposition, soil pH, precipitation, and temperature) by looking at the R^2 coefficients of determination (based on absolute deviations in quantile regression rather than squared deviations) of b-spline models with and without these four main effects. Next, we examined nonlinear regressions of the 0.50 (median), 0.10, and 0.90 quantiles of total herbaceous plant species richness response to N deposition (quadratic), soil pH, mean annual

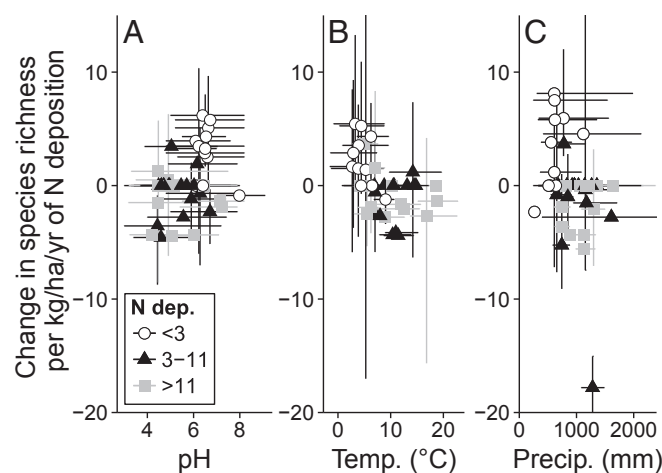


Fig. 4. Magnitude of plant species richness changes associated with N deposition, as moderated individually by (A) soil pH, (B) average temperature, or (C) annual precipitation. Each point, symbolized by the mean N deposition of that gradient ($\text{kg}\cdot\text{ha}^{-1}\cdot\text{y}^{-1}$), represents an individual gradient with a single narrow vegetation type. Species richness change is calculated as the simple slope of nitrogen deposition from multiple regression coefficients: $\beta_N + (\beta_{N \times M} \times M_i)$, where β_N is the parameter for N deposition, $\beta_{N \times M}$ is the parameter for the interaction of N deposition and the moderating variable M, and M_i are the mean (symbol) and range (lines) of the moderating variable M across the gradient. Unlike in Fig. 3, each predictor variable is considered separately.

temperature, annual precipitation, and the two-way interactions involving N deposition (i.e., $N \times$ precipitation, $N \times$ temperature, and $N \times$ soil pH) using the quantreg package of R (version 3.0.2) software. Out of all possible models, we selected the model with the lowest corrected Akaike information criterion (AICc) for each of the two broad vegetation types (Table 1 and Fig. 1).

We used the median quantile regression model with the best AICc to calculate separate critical loads of N deposition for open and closed canopy vegetation. Qualitatively, critical loads of N deposition are defined here as the N deposition threshold at which species richness begins to decline, corresponding graphically to the N deposition level at which a hump-shaped relationship between N deposition and species richness reaches its peak value of species richness. Quantitatively, we calculated critical loads of N deposition by taking the first derivative of the best model with respect to nitrogen and setting that expression to zero, for models with a negative quadratic N deposition term. For critical loads specific to each site, we used the coefficients from the critical load expression and site-specific covariate values. We subtracted critical loads from N deposition to determine exceedances of N deposition critical loads. Three sets of exceedances were calculated, using (i) the median point estimates of critical loads, as well as (ii) the upper and (iii) the lower limits of the 95% CI of the critical loads. Only the exceedances based on the median point estimates of critical loads are presented graphically and in the Abstract.

Further community-scale analyses were focused on individual alliances as defined by the National Vegetation Classification (NVC) (33). We analyzed

alliances with deposition gradients with maximum N deposition that was either 2.5 times or $4 \text{ kg-ha}^{-1}\text{-y}^{-1}$ greater than minimum N deposition, and that had at least 20 sites from at least one common data source. These gradient criteria reduced the number of sites to 6,807. For each N deposition gradient, we performed multiple regressions of species richness against N deposition, with the same predictor variables and the same model selection procedure as in the national analysis (except that N deposition was only first order).

ACKNOWLEDGMENTS. Vegetation data were shared by the Forest Inventory and Analysis Database (FIADB) Vegetation Indicators Program, the Ecological Society of America VegBank, the Minnesota Biological Survey, the New York, Virginia, and West Virginia Natural Heritage Programs, Robert Peet and the Carolina Vegetation Survey, the US National Park Service Southern Colorado Plateau Network, the University of Wisconsin Plant Ecology Laboratory, Kevin Knutson of the US Geological Survey (USGS), and the coauthors. This paper arose from the "Diversity and Nitrogen Deposition" working group supported by the John Wesley Powell Center for Analysis and Synthesis, funded by the USGS. The US Environmental Protection Agency (Contract EP-12-H-000491) and the Cooperative Ecosystem Studies Units Network (National Park Service Grant P13AC00407 and USGS Grant G14AC00028) provided additional funding. The USGS supports the conclusions of research conducted by their employees, and peer reviews and approves all of their products consistent with USGS Fundamental Science Practices. The views expressed in this manuscript do not necessarily reflect the views or policies of the US Environmental Protection Agency or the USDA Forest Service. Mention of trade names or commercial products does not constitute endorsement or recommendation for use.

- Galloway JN, et al. (2004) Nitrogen cycles: Past, present, and future. *Biogeochemistry* 70(2):153–226.
- Porter EM, et al. (2013) Interactive effects of anthropogenic nitrogen enrichment and climate change on terrestrial and aquatic biodiversity. *Biogeochemistry* 114(1-3): 93–120.
- Sala OE, et al. (2000) Global biodiversity scenarios for the year 2100. *Science* 287(5459): 1770–1774.
- Bobbink R, et al. (2010) Global assessment of nitrogen deposition effects on terrestrial plant diversity: A synthesis. *Ecol Appl* 20(1):30–59.
- Tilman D, Reich PB, Knops JMH (2006) Biodiversity and ecosystem stability in a decade-long grassland experiment. *Nature* 441(7093):629–632.
- Isbell F, et al. (2013) Nutrient enrichment, biodiversity loss, and consequent declines in ecosystem productivity. *Proc Natl Acad Sci USA* 110(29):11911–11916.
- Isbell F, et al. (2011) High plant diversity is needed to maintain ecosystem services. *Nature* 477(7363):199–202.
- De Schrijver A, et al. (2011) Cumulative nitrogen input drives species loss in terrestrial ecosystems. *Glob Ecol Biogeogr* 20(6):803–816.
- Clark CM, et al. (2007) Environmental and plant community determinants of species loss following nitrogen enrichment. *Ecol Lett* 10(7):596–607.
- Clark CM, Tilman D (2008) Loss of plant species after chronic low-level nitrogen deposition to prairie grasslands. *Nature* 451(7179):712–715.
- Stevens CJ, Dise NB, Mountford JO, Gowing DJ (2004) Impact of nitrogen deposition on the species richness of grasslands. *Science* 303(5665):1876–1879.
- Stevens CJ, et al. (2010) Nitrogen deposition threatens species richness of grasslands across Europe. *Environ Pollut* 158(9):2940–2945.
- Hautier Y, Niklaus PA, Hector A (2009) Competition for light causes plant biodiversity loss after eutrophication. *Science* 324(5927):636–638.
- Neufeld HS, Young DR (2014) Ecophysiology of the herbaceous layer in temperate deciduous forests. *The Herbaceous Layer in Forests of Eastern North America*, ed Gilliam FS (Oxford Univ Press, New York), 2nd Ed, Chap 3, pp 34–95.
- Beier CM, et al. (2012) Changes in faunal and vegetation communities along a soil calcium gradient in northern hardwood forests. *Can J For Res* 42(6):1141–1152.
- Hall SJ, et al. (2011) Ecosystem response to nutrient enrichment across an urban airshed in the Sonoran Desert. *Ecol Appl* 21(3):640–660.
- Ladwig LM, et al. (2012) Above- and belowground responses to nitrogen addition in a Chihuahuan Desert grassland. *Oecologia* 169(1):177–185.
- Pardo LH, et al. (2011) Effects of nitrogen deposition and empirical nitrogen critical loads for ecoregions of the United States. *Ecol Appl* 21(8):3049–3082.
- Bobbink R, Hicks WK (2014) Factors affecting nitrogen deposition impacts on biodiversity: An overview. *Nitrogen Deposition, Critical Loads, and Biodiversity*, eds Sutton MA, et al. (Springer, Dordrecht, The Netherlands), Chap 14, pp 127–138.
- Stevens CJ, Thompson K, Grime JP, Long CJ, Gowing DJG (2010) Contribution of acidification and eutrophication to declines in species richness of calcifuge grasslands along a gradient of atmospheric nitrogen deposition. *Funct Ecol* 24(2):478–484.
- Chen DM, Lan ZC, Bai X, Grace JB, Bai YF (2013) Evidence that acidification-induced declines in plant diversity and productivity are mediated by changes in below-ground communities and soil properties in a semi-arid steppe. *J Ecol* 101(5):1322–1334.
- Sverdrup H, et al. (2012) Testing the feasibility of using the ForSAFE-VEG model to map the critical load of nitrogen to protect plant biodiversity in the Rocky Mountains region, USA. *Water Air Soil Pollut* 223(1):371–387.
- Bowman WD, Gartner JR, Holland K, Wiedermann M (2006) Nitrogen critical loads for alpine vegetation and terrestrial ecosystem response: Are we there yet? *Ecol Appl* 16(3):1183–1193.
- Diekmann M, et al. (2014) Long-term changes in calcareous grassland vegetation in North-western Germany: No decline in species richness, but a shift in species composition. *Biol Conserv* 172:170–179.
- Magurran AE (2004) *Measuring Biological Diversity* (Blackwell, Malden, MA).
- Roth T, Kohli L, Rihm B, Achermann B (2013) Nitrogen deposition is negatively related to species richness and species composition of vascular plants and bryophytes in Swiss mountain grassland. *Agric Ecosyst Environ* 178:121–126.
- Gilliam FS (2006) Response of the herbaceous layer of forest ecosystems to excess nitrogen deposition. *J Ecol* 94(6):1176–1191.
- Fenn ME, et al. (2010) Nitrogen critical loads and management alternatives for N-impacted ecosystems in California. *J Environ Manage* 91(12):2404–2423.
- Suding KN, et al. (2005) Functional- and abundance-based mechanisms explain diversity loss due to N fertilization. *Proc Natl Acad Sci USA* 102(12):4387–4392.
- Verheyen K, et al. (2012) Driving factors behind the eutrophication signal in understory plant communities of deciduous temperate forests. *J Ecol* 100(2):352–365.
- Dirnböck T, et al. (2014) Forest floor vegetation response to nitrogen deposition in Europe. *Glob Change Biol* 20(2):429–440.
- Throop HL, Lerdau MT (2004) Effects of nitrogen deposition on insect herbivory: Implications for community and ecosystem processes. *Ecosystems (N Y)* 7(2):109–133.
- Grossman DH, et al. (1998) *International Classification of Ecological Communities: Terrestrial Vegetation of the United States*. The National Vegetation Classification System: Development, Status, and Applications (The Nature Conservancy, Arlington, VA), Vol I.
- Lamarque JF, et al. (2013) Multi-model mean nitrogen and sulfur deposition from the Atmospheric Chemistry and Climate Model Intercomparison Project (ACCMIP): Evaluation of historical and projected future changes. *Atmos Chem Phys* 13(16):7997–8018.
- Schwede DB, Lear GG (2014) A novel hybrid approach for estimating total deposition in the United States. *Atmos Environ* 92:207–220.
- Radeloff VC, et al. (2010) Housing growth in and near United States protected areas limits their conservation value. *Proc Natl Acad Sci USA* 107(2):940–945.
- Dengler J, et al., eds (2012) Vegetation databases for the 21st century. *Biodivers & Ecol* 4:1–447.
- Knutson KC, et al. (2014) Long-term effects of seeding after wildfire on vegetation in Great Basin shrubland ecosystems. *J Appl Ecol* 51(5):1414–1424.
- Dennis RL, et al. (2013) Sensitivity of continental United States atmospheric budgets of oxidized and reduced nitrogen to dry deposition parametrizations. *Philos Trans R Soc Lond B Biol Sci* 368(1621):20130124.
- Daly C, et al. (2008) Physiographically sensitive mapping of climatological temperature and precipitation across the conterminous United States. *Int J Climatol* 28(15): 2031–2064.

Supporting Information

Simkin et al. 10.1073/pnas.1515241113

SI Methods

Data Acquisition and Management. Vegetation data sources included the US Forest Service (USFS) Forest Inventory and Analysis Phase 3 Vegetation Indicators herbaceous plant dataset, the Ecological Society of America's VegBank archive of vegetation plots (www.vegbank.org), state Natural Heritage Programs, individual researchers, and other organizations (Table S1). Vegetation datasets that were themselves collections of datasets (MN and VA) were subdivided based on the agency or project that collected the data. Species-area curves were essentially flat, presumably because sites had already mostly saturated by 100 m². We corrected misspelled plant species names, revised taxonomy to match use at USDA PLANTS (plants.usda.gov/java/), lumped subspecies and varieties to the species level, and added plant species attributes obtained from USDA PLANTS (plants.usda.gov/adv_search.html).

Each vegetation sampling site was classified into a vegetation type: specifically, the alliance level of the 1997 version of the National Vegetation Classification (NVC) (33), which generally specifies the one to three most dominant plant species. Where investigators had used a classification scheme other than NVC alliances, we reassigned sites to the closest possible alliance. Unclassified unforested sites were assigned an alliance value based on dominant species within the field vegetation data.

Our modern (1985–2011) N deposition estimate correlated well with a short 5-y temporal subset of N deposition from 2006 to 2010 [$r^2 = 0.98$, $N_{dep_{2006-2010}} = (N_{dep_{1985-2011}} * 0.84) + 0.53$], with the 2006–2010 subset averaging 0.80 kg·ha⁻¹·y⁻¹ lower. Critical loads of N deposition based on just 5 y of N deposition likely underestimate the importance of N retention over multiple decades whereas critical loads based on N deposition accumulated over the course of 160 y would likely underestimate the importance of N losses. In contrast, the intermediate timescale of our N deposition estimate (10 y of dry deposition and 27 y of wet deposition) is consistent with a moderate and realistic amount of N retention. Nevertheless, to illustrate the possible role of temporal trends in N deposition, we conducted a parallel analysis using just the 5-y temporal subset of N deposition from 2006 to 2010, finding that exceedances of N deposition critical loads calculated using the 2006–2010 N deposition subset were on average just 0.83 kg·ha⁻¹·y⁻¹ higher than exceedances calculated using the 1985–2011 N deposition estimates [$r^2 = 0.97$, $Exceedance_{2006-2010} = (Exceedance_{1985-2011} * 0.82) + 0.11$].

Additional alternative N deposition estimates were considered. Our modern (1985–2011) N deposition estimate correlated well ($r^2 = 0.78$) with average N deposition that also includes historic estimates

from 1850 to 1984 (34) [$N_{dep_{historic}} = (0.63 * N_{dep_{1985-2011}}) - 0.02$], despite the coarse scale (~2° latitude × 5° longitude grid) and uncertainty of the historical data. Total CMAQ N deposition was correlated with our total N deposition estimates [$r^2 = 0.98$, $CMAQ_{2002-2011} = (N_{dep_{1985-2011}} * 0.99) - 0.24$]. An initial version of total deposition estimates from the Total Deposition Science Committee (TDEP) (35) was correlated with our total N deposition estimates [$r^2 = 0.89$, $TDEP_{2000-2012} = (N_{dep_{1985-2011}} * 0.91) + 0.30$], and, when TDEP estimates are finalized, they will be useful for some future analyses. Monitoring data and spatial modeling techniques are not yet sufficiently reliable to add organic nitrogen to our inorganic nitrogen deposition estimate.

We also examined housing density as a potentially confounding indicator of urbanization but found that its correlation coefficient with N deposition was only 0.19 and did not use it in further analyses. The housing data were those data used in Radeloff et al. (36).

Data Analysis. For the national surface analyses, we characterized uncertainty in the site-specific critical load values by performing a Monte Carlo resampling of the coefficients from a multivariate normal distribution, with means equal to the coefficient estimates and variance/covariance from the parameters in the median quantile regression model. We computed a 95% confidence interval for each site estimate of critical loads based on the 2.5th and 97.5th percentiles of 10,000 simulations for each site.

For the gradient analyses, we extracted the model coefficients (and their 95% CI), the r^2 , and the minimum and maximum values of each predictor variable for each gradient. Within each gradient, we calculated species richness change as the simple slope of N deposition from multiple regression coefficients: $\beta_N + (\beta_{N*M} \times M_i)$, where β_N is the parameter for N deposition, β_{N*M} is the parameter for the interaction of N deposition and the moderating variable M, and M_i are values of the moderating variable M across the gradient. Using the N deposition slopes calculated above and the observed range of moderating variables in each gradient, we classified each gradient as containing one of the following relationships between N deposition and plant species richness: (i) an unconditionally negative relationship, (ii) an unconditionally positive relationship, (iii) one of several specified relationships that are conditional on other moderating environmental predictors, or (iv) no detectable relationship between N deposition and plant species richness. For gradients that had a detectable relationship between N deposition and plant species richness, we also plotted the N deposition simple slopes as a function of the moderating variables of each gradient.

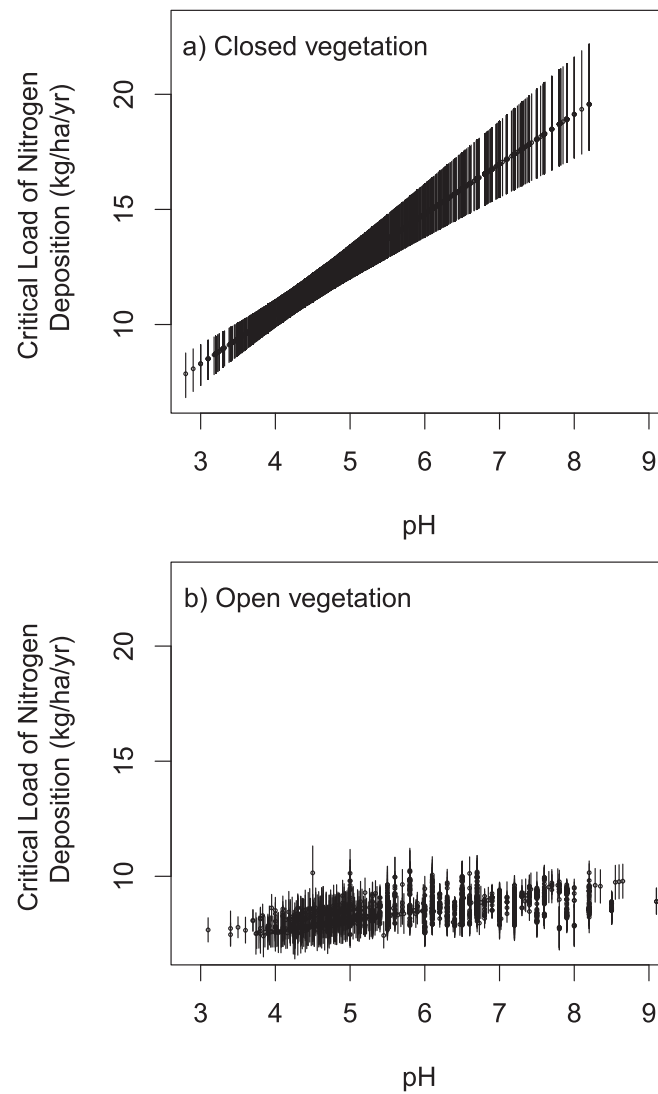


Fig. 54. Critical loads (and their 95% confidence interval) of N deposition as a function of soil pH. The 11,819 closed canopy sites (deciduous, evergreen, and mixed forests) are in *A*, and the 3,317 open sites (combined grassland, shrubland, and woodland vegetation types) are in *B*.

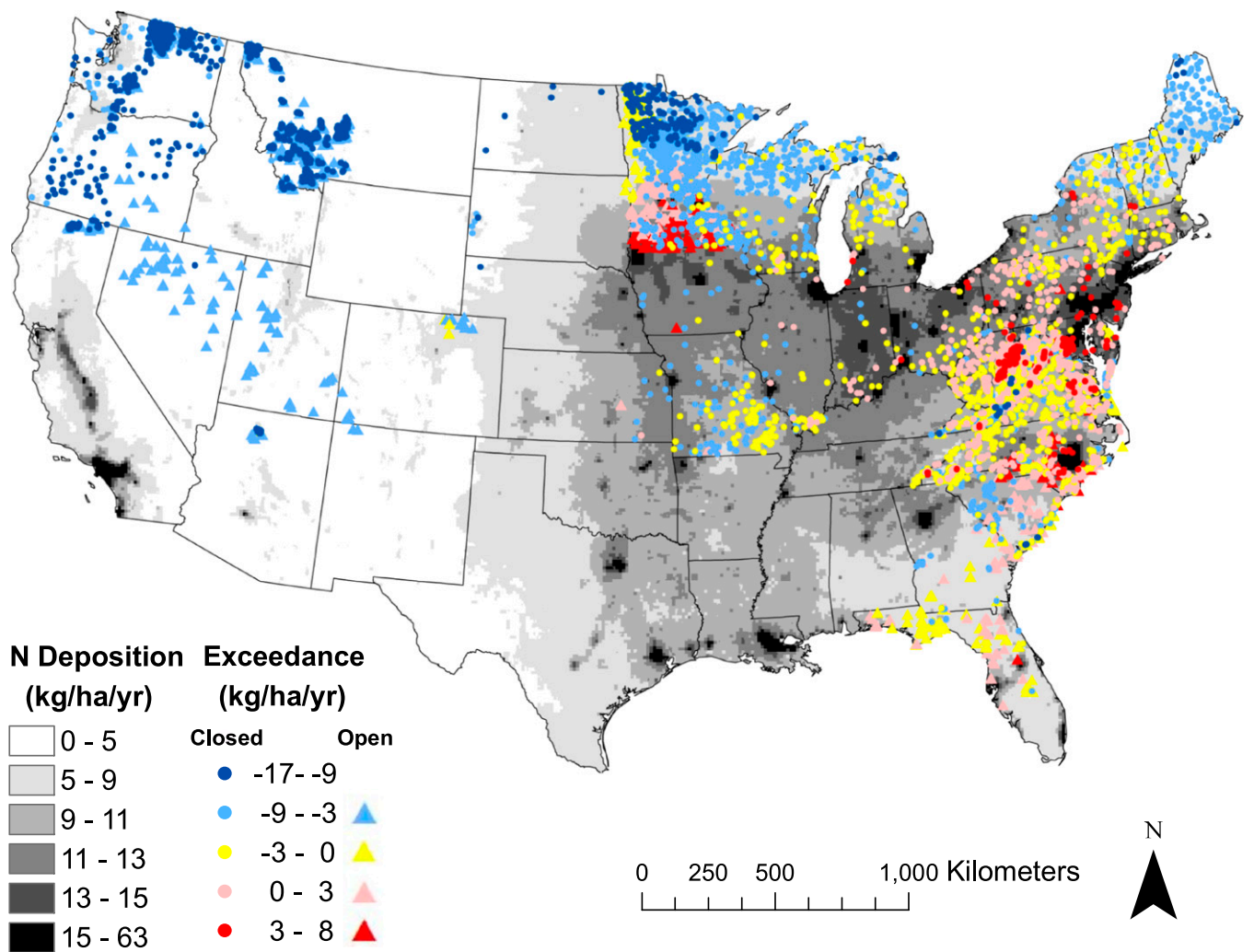


Fig. S5. Exceedances of critical loads for nitrogen deposition based on total graminoid plus forb species richness. Exceedances were calculated by subtracting critical loads (of median point estimates) from N deposition values at each site, so negative values indicate that N deposition has been below the critical load and positive values indicate that N deposition has exceeded the critical load. The 3,317 open sites (combined grassland, shrubland, and woodland vegetation types) are portrayed with triangles, and the 11,819 closed canopy sites (deciduous, evergreen, and mixed forests) are portrayed with circles. Background deposition values are the average of 27 y of wet deposition (NADP 1985–2011) plus the average of 10 y of dry deposition (CMAQ 2002–2011).

Table S1. Summary of vegetation data sources for national surface analysis

Data name	Location	Source	Sites
Alvar	Northeastern US	Peet RK, Lee MT, Jennings MD, Faber-Langendoen D. Long database report: VegBank—A permanent, open-access archive for vegetation-plot data. Pages 233–241 in ref. 37. Downloaded from VegBank.	36
CO	Western plains of US (Pawnee Nat. Grassland)	Peet RK, Lee MT, Jennings MD, Faber-Langendoen D. Long Database Report: VegBank—A permanent, open-access archive for vegetation-plot data. Pages 233–241 in ref. 37. Downloaded from VegBank.	17
CVS	Southeastern US	Peet RK, Lee MT, Boyle MF, Wentworth, TR, Schafale, MP, Weakley AS. Long database report: Vegetation-plot database of the Carolina Vegetation Survey. Pages 243–253 in ref. 37. Provided by R. K. Peet and M. T. Lee in 2013 and now available in the Ecological Society of America VegBank.	2,611
FIA	Contiguous US	Schulz BK, Dobelbower K. Short database report: FIADB vegetation diversity and structure indicator (VEG). Page 436 in ref. 37. Provided by B. K. Schulz. Available from apps.fs.fed.us/fiadb-downloads/datamart.html .	1,280
Knutson	Intermountain West of US	sagemap.wr.usgs.gov/ESR_Chrono.aspx and ref. 38. Provided by K. C. Knutson.	160
MN	Upper Midwest US	Provided by Minnesota Biological Survey. Copyright 2013 State of Minnesota, Department of Natural Resources.	2,896
NY	Northeastern US (NY Natural Heritage Program)	Peet RK, Lee MT, Jennings MD, Faber-Langendoen D. Long database report: VegBank—A permanent, open-access archive for vegetation-plot data. Pages 233–241 in ref. 37. Downloaded from VegBank.	75
PNW	Pacific Northwest of US	Peet RK, Lee MT, Jennings MD, Faber-Langendoen D. Long database report: VegBank—A permanent, open-access archive for vegetation-plot data. Pages 233–241 in ref. 37. Downloaded from VegBank.	3,570
SW	Southwestern US	Provided by the Southern Colorado Plateau Network of the US National Park Service and the laboratory of W. D. Bowman.	106
VA	Southeastern US	Provided by the Virginia Department of Conservation and Recreation, Division of Natural Heritage, VA Plots, the DCR-DNH Vegetation Plots Database. Data exported on March 8, 2013. Now available in VegBank.	2,777
WI	Upper Midwest US	Waller DM, Amatangelo KL, Johnson S, Rogers DA. Long database report: Wisconsin Vegetation Database—Plant community survey and resurvey data from the Wisconsin Plant Ecology Laboratory. Pages 255–264 in ref. 37. Provided by D. M. Waller.	112
WV	Southeastern US	Vanderhorst JP, Byers EA, Streets BP. Short database report: Natural Heritage Vegetation Database for West Virginia. Page 440 in ref. 37. Provided by the West Virginia Natural Heritage Program. Now available in VegBank.	1,496
Overall			15,136

Table S2. Summary of predictor variable sources

Variable	Source
Wet N deposition	NADP (2013) Annual National Trends Network (NTN) Maps by Analyte. Available at nadp.sws.uiuc.edu/ntn/maps.aspx (National Atmospheric Deposition Program, Illinois State Water Survey).
Dry N deposition	CMAQ (Community Multiscale Air Quality) model. Provided by R. L. Dennis in 2014 (39).
Precipitation, mm	PRISM (2013) 30-year normals. Parameter-elevation relationships on independent slopes model. Available at prism.nacse.org/normals/ (Northwest Alliance for Computational Science & Engineering at Oregon State University) (1981–2010 normals) (40).
Temperature, °C	PRISM (2013) 30-year normals. Parameter-elevation relationships on independent slopes model. Available at prism.nacse.org/normals/ (Northwest Alliance for Computational Science & Engineering at Oregon State University) (1981–2010 normals) (40).
Soil pH	Provided with vegetation data; otherwise from USDA SSURGO soil dataset. SSURGO (2014) Geospatial Data Gateway. Available at https://gdg.sc.egov.usda.gov/GDGOrder.aspx?order=QuickState (USDA Natural Resources Conservation Service).

Table S3. Vegetation Alliances with sufficient data for gradient analyses

Vegetation Alliance (33) (from National Vegetation Classification)	N deposition, kg·ha ⁻¹ ·y ⁻¹		Sites
	Min.	Max.	
<i>Abies lasiocarpa</i> - <i>Picea engelmannii</i> forest (ABLA)	1.7	5.0	355
<i>Acer saccharum</i> - <i>Betula alleghaniensis</i> -(<i>Fagus grandifolia</i>) forest (ACSA)	4.1	15.2	399
<i>Acer saccharum</i> - <i>Tilia americana</i> -(<i>Quercus rubra</i>) forest (ACETIL)	4.7	17.0	479
<i>Andropogon gerardii</i> -(<i>Sorghastrum nutans</i>) herbaceous (ANGE)	8.7	14.0	64
<i>Artemisia tridentata</i> shrubland (ARTR)	1.3	4.6	314
<i>Betula papyrifera</i> forest (BEPA)	3.4	11.4	25
<i>Fagus grandifolia</i> - <i>Quercus rubra</i> - <i>Quercus alba</i> forest (FAGR)	7.0	14.9	26
<i>Festuca idahoensis</i> alpine herbaceous (FEID)	1.8	4.6	330
<i>Liriodendron tulipifera</i> forest (LITU)	8.4	15.6	20
<i>Pinus contorta</i> forest (PICO)	1.7	4.8	603
<i>Pinus palustris</i> woodland (PIPA)	5.6	15.1	199
<i>Pinus ponderosa</i> forest (PIPO)	1.5	6.0	238
<i>Pinus strobus</i> forest (PIST)	4.1	13.9	50
<i>Pinus taeda</i> forest (PITA)	6.6	14.4	206
<i>Populus tremuloides</i> forest (POTR)	1.3	12.3	362
<i>Pseudotsuga menziesii</i> forest (PSME)	1.4	7.5	333
<i>Pseudotsuga menziesii</i> giant forest (PSME)	1.4	3.6	106
<i>Pseudotsuga menziesii</i> woodland (PSME)	1.5	4.4	656
<i>Quercus alba</i> -(<i>Quercus rubra</i> , <i>Carya</i> spp.) forest (QUAL)	6.6	17.8	1,362
<i>Quercus prinus</i> - <i>Quercus</i> (<i>alba</i> , <i>falcata</i> , <i>rubra</i> , <i>velutina</i>) forest (QUPR)	9.3	15.2	23
<i>Quercus</i> spp.- <i>Pinus</i> (<i>rigida</i> , <i>echinata</i>) forest (QUEPIN)	7.9	17.9	233
<i>Quercus virginiana</i> -(<i>Sabal palmetto</i>) forest (QUEVIR)	6.0	12.8	21
<i>Schizachyrium scoparium</i> - <i>Bouteloua curtipendula</i> herbaceous (SCSC)	8.4	14.3	267
<i>Symphoricarpos albus</i> shrubland (SYAL)	1.6	4.1	31
<i>Thuja occidentalis</i> forest (THOC)	4.2	9.1	24
<i>Tilia americana</i> - <i>Fraxinus americana</i> -(<i>Acer saccharum</i>) woodland (TIAM)	4.7	14.1	81
Overall	1.3	17.9	6,807

Table S4. Critical loads (CLs) of N deposition for level 1 ecoregions in the present study compared with previously cited estimates in Pardo et al. (18)

Level 1 ecoregion	CL of N dep. cited in table 5 of ref. 18 (Pardo et al.), kg·ha ⁻¹ ·y ⁻¹	CL of N dep. (total herbaceous richness) from present study, kg·ha ⁻¹ ·y ⁻¹	Compared with Pardo et al. (18)
Northern forests	7–21 (hardwood forest alteration of herbaceous understory)	Open: 8.0–9.8 (mean = 8.9, n = 75) Closed: 8.0–18.9 (mean = 13.8, n = 1,955)	New Similar
Northwestern forested mountains	4–10 (alpine grassland species composition change)	Open: 8.0–10.2 (mean = 9.1, n = 1,429) Closed: 10.8–19.6 (mean = 15.3, n = 2,113)	Similar New
Marine west coast forests	No vascular plant CL	Open: No data Closed: 10.4–15.0 (mean = 12.8, n = 24)	New New
Eastern temperate forests	<17.5 (hardwood forest declines in species-rich genera)	Open: 6.6–9.7 (mean = 7.9, n = 947) Closed: 7.8–19.3 (mean = 12.5, n = 7,378)	New Lower
Great plains	5–15 (tallgrass prairie community shifts)	Open: 8.3–9.8 (mean = 9.3, n = 618) Closed: 11.3–19.6 (mean = 16.6, n = 274)	Similar New
North American desert	3–8.4 (warm desert decrease of native forbs)	Open: 8.3–9.9 (mean = 9.2, n = 240) Closed: 13.5–17.0 (mean = 16.5, n = 32)	Higher New
Temperate Sierras	No vascular plant CL	Open: 8.6–8.7 (mean = 8.65, n = 3) Closed: 14.8–14.8 (mean = 14.8, n = 42)	New New

Critical load estimates in the present study are calculated using the two equations in Table 2. “Open” refers to open canopy vegetation whereas “Closed” refers to closed canopy forest vegetation. We did not have any vegetation sites with critical loads to summarize for the remaining two ecoregions: namely the wet tropical forest and the Mediterranean California ecoregions.

Table S5. Summary of herbaceous plant species richness responses to N deposition in gradients

Gradient code	N deposition response	Data source	NVC Alliance	Major vegetation type	Model	R.2	Weight	Sites	N_dep min	N_dep mean	N_dep max	Precip mm min	Precip mm mean	Precip mm max	Temp °C min	Temp °C mean	Temp °C max	pH min	pH mean	pH max
ACSA2	Spp decline unconditionally with N dep	CVS	<i>Acer saccharum</i> - <i>Betula alleghaniensis</i> - <i>(Fagus grandifolia)</i> forest	Broad-leaved forest	N_dep + pH + temp_C + 1	0.269	0.73	34	9.12	11.98	13.77	1,203	1,640	2,383	9.0	11.0	15.2	4.23	4.87	5.80
ACSA3	No N dep response	FIA	<i>Acer saccharum</i> - <i>Betula alleghaniensis</i> - <i>(Fagus grandifolia)</i> forest	Broad-leaved forest	pH + 1	0.107	0.62	176	4.12	8.30	14.53	680	1,034	1,613	2.9	5.6	8.9	3.42	4.49	6.54
ACSA4	No N dep response	MN	<i>Acer saccharum</i> - <i>Betula alleghaniensis</i> - <i>(Fagus grandifolia)</i> forest	Broad-leaved forest	1	0.000	0.42	23	4.68	6.92	8.75	625	681	790	3.8	4.3	5.1	5.00	6.02	6.70
ACSA5	Spp decline conditional on precip	WV	<i>Acer saccharum</i> - <i>Betula alleghaniensis</i> - <i>(Fagus grandifolia)</i> forest	Broad-leaved forest	N_dep + N:precip + pH + precip_mm + temp_C + 1	0.426	0.65	166	9.08	11.79	15.23	886	1,217	1,718	6.3	8.8	12.9	3.20	4.48	7.90
ACETIL1	No N dep response	FIA	<i>Acer saccharum</i> - <i>Tilia americana</i> - <i>(Quercus rubra)</i> forest	Broad-leaved forest	1	0.000	0.38	32	4.93	9.27	12.55	710	963	1,339	4.1	6.1	8.6	3.83	4.96	6.46
ACETIL2	Spp decline conditional on precip and temp	MN	<i>Acer saccharum</i> - <i>Tilia americana</i> - <i>(Quercus rubra)</i> forest	Broad-leaved forest	N_dep + N:precip + N:temp + pH + precip_mm + temp_C + 1	0.317	0.31	352	4.69	8.92	14.40	607	741	895	3.1	5.5	8.2	4.90	6.16	7.90
ACETIL3	Spp increase conditional on temp	WI	<i>Acer saccharum</i> - <i>Tilia americana</i> - <i>(Quercus rubra)</i> forest	Broad-leaved forest	N_dep + N:temp + temp_C + 1	0.300	1.00	95	6.02	10.75	17.04	728	848	945	4.2	7.1	8.9	4.30	5.90	7.40
BEPA	No N dep response	FIA	<i>Betula papyrifera</i> forest	Broad-leaved forest	pH + precip_mm + 1	0.211	0.41	25	3.37	6.33	11.42	664	963	1,501	3.0	4.8	7.9	3.41	4.92	6.49
FAGR	No N dep response	VA	<i>Fagus grandifolia</i> - <i>Quercus rubra</i> - <i>Quercus alba</i> forest	Broad-leaved forest	pH + 1	0.265	0.42	26	6.98	11.61	14.94	1,054	1,142	1,243	13.2	14.4	15.8	3.80	4.45	5.40
LITU	Spp decline unconditionally with N dep	FIA	<i>Liriodendron tulipifera</i> forest	Broad-leaved forest	N_dep + precip_mm + 1	0.489	1.00	20	8.40	12.72	15.62	985	1,134	1,330	8.7	11.4	14.4	3.94	5.05	6.00
POTR1	No N dep response	FIA	<i>Populus tremuloides</i> forest	Broad-leaved forest	pH + temp_C + 1	0.218	0.25	85	4.89	7.45	12.31	627	779	1,159	2.8	4.9	7.6	3.88	5.04	7.04
POTR2	Spp decline conditional on precip	MN	<i>Populus tremuloides</i> forest	Broad-leaved forest	N_dep + N:precip + precip_mm + 1	0.077	0.31	227	4.69	6.97	9.29	549	655	782	3.0	4.1	5.3	4.80	6.28	7.90
POTR3	No N dep response	PNW	<i>Populus tremuloides</i> forest	Broad-leaved forest	precip_mm + temp_C + 1	0.446	0.67	50	1.30	2.51	4.07	325	623	1,359	1.1	4.4	7.8	5.50	6.54	7.40
QUAL1	Spp decline conditional on pH	CVS	<i>Quercus alba</i> - <i>Quercus rubra</i> , <i>Carya spp.</i> forest	Broad-leaved forest	N_dep + N:pH + pH + precip_mm + temp_C + 1	0.420	0.34	182	9.54	11.12	15.57	1,115	1,365	2,171	9.2	13.1	17.3	3.50	4.91	6.54
QUAL2	No N dep response	FIA	<i>Quercus alba</i> - <i>Quercus rubra</i> , <i>Carya spp.</i> forest	Broad-leaved forest	pH + 1	0.012	0.25	202	6.63	11.26	17.84	715	1,066	1,448	3.8	10.7	14.6	3.49	5.15	7.82
QUAL3	No N dep response	MN	<i>Quercus alba</i> - <i>Quercus rubra</i> , <i>Carya spp.</i> forest	Broad-leaved forest	pH + 1	0.085	0.33	57	6.83	11.04	13.31	625	817	892	4.0	6.9	8.3	5.40	6.45	7.50
QUAL4	No N dep response	VA	<i>Quercus alba</i> - <i>Quercus rubra</i> , <i>Carya spp.</i> forest	Broad-leaved forest	pH + temp_C + 1	0.290	0.44	355	7.08	10.76	15.38	944	1,175	1,711	7.1	12.0	15.7	3.00	4.71	7.90
QUAL5	Spp decline unconditionally with N dep	WI	<i>Quercus alba</i> - <i>Quercus rubra</i> , <i>Carya spp.</i> forest	Broad-leaved forest	N_dep + precip_mm + temp_C + 1	0.298	0.19	45	10.19	12.27	16.20	789	885	926	7.0	8.0	8.8	4.70	6.02	7.10
QUAL6	No N dep response	WV	<i>Quercus alba</i> - <i>Quercus rubra</i> , <i>Carya spp.</i> forest	Broad-leaved forest	pH + precip_mm + 1	0.273	0.45	521	8.45	11.30	15.23	874	1,163	1,725	6.5	10.5	13.0	3.30	4.47	7.50
QUPR	Spp decline unconditionally with N dep	FIA	<i>Quercus prinus</i> - <i>Quercus (alba, faicata, rubra, velutina)</i> forest	Broad-leaved forest	N_dep + 1	0.214	0.25	23	9.27	11.82	15.19	911	1,129	1,338	7.9	10.4	13.9	3.23	4.21	5.36
QUEPIN2	Spp decline conditional on temp and pH	CVS	<i>Quercus spp.</i> - <i>Pinus (rigida, echinata)</i> forest	Mixed forest	N_dep + N:pH + N:precip + N:temp + pH + precip_mm + temp_C + 1	0.535	1.00	120	7.88	11.14	17.90	1,085	1,298	1,501	9.7	14.2	19.7	3.18	4.48	5.74
QUEPIN1	No N dep response	VA	<i>Quercus spp.</i> - <i>Pinus (rigida, echinata)</i> forest	Mixed forest	pH + temp_C + 1	0.331	0.56	113	8.40	10.95	13.73	980	1,154	1,657	7.4	12.6	15.5	3.30	4.60	8.00
QUEVIR	No N dep response	CVS	<i>Quercus virginiana</i> - <i>(Sabal palmetto)</i> forest	Mixed forest	1	0.000	0.63	21	6.01	9.35	12.75	1,185	1,265	1,451	17.3	18.6	19.2	4.56	5.70	7.85
ABLA	Spp increase conditional on precip and temp	PNW	<i>Abies lasiocarpa</i> - <i>Picea engelmannii</i> forest	Conifer forest	N_dep + N:precip + N:temp + precip_mm + temp_C + 1	0.331	0.42	355	1.68	2.99	5.00	417	1,119	2,133	-1.5	2.7	7.4	4.80	6.09	7.60
PICO	Spp increase conditional on temp and pH	PNW	<i>Pinus contorta</i> forest	Conifer forest	N_dep + N:pH + N:temp + pH + precip_mm + temp_C + 1	0.226	0.72	603	1.69	2.97	4.77	338	773	1,565	-1.4	2.9	7.4	4.80	6.23	8.20
PIPO1	No N dep response	FIA	<i>Pinus ponderosa</i> forest	Conifer forest	temp_C + 1	0.095	0.33	28	1.60	2.93	6.00	335	690	2,131	3.6	6.5	9.2	4.60	6.11	7.61
PIPO2	No N dep response	PNW	<i>Pinus ponderosa</i> forest	Conifer forest	temp_C + 1	0.109	0.54	210	1.46	2.36	4.35	328	640	1,554	0.8	6.5	9.1	5.00	6.40	7.60
PIST1	No N dep response	FIA	<i>Pinus strobus</i> forest	Conifer forest	pH + temp_C + 1	0.360	0.45	25	4.09	7.09	10.69	670	924	1,257	3.1	5.5	7.5	3.70	4.70	5.82
PIST2	No N dep response	WV	<i>Pinus strobus</i> forest	Conifer forest	pH + 1	0.235	1.00	25	8.94	10.59	13.90	970	1,143	1,464	7.0	10.2	12.2	3.70	4.60	6.50
PITA1	Spp decline conditional on temp and pH	CVS	<i>Pinus taeda</i> forest	Conifer forest	N_dep + N:pH + N:temp + pH + temp_C + 1	0.584	0.71	182	6.56	10.99	14.35	1,083	1,281	1,489	13.7	16.8	22.6	3.00	4.44	7.20
PITA2	No N dep response	VA	<i>Pinus taeda</i> forest	Conifer forest	precip_mm + temp_C + 1	0.268	0.26	24	7.38	11.54	14.41	1,064	1,092	1,124	14.5	14.8	15.3	4.60	4.88	5.30
PSME1	Spp decline unconditionally with N dep	FIA	<i>Pseudotsuga menziesii</i> forest	Conifer forest	N_dep + 1	0.088	0.71	62	1.42	3.55	7.51	397	1,609	4,346	4.7	8.8	12.6	4.00	5.56	7.43
PSME2	Spp increase conditional on temp and pH	PNW	<i>Pseudotsuga menziesii</i> forest	Conifer forest	N_dep + N:pH + N:temp + pH + precip_mm + temp_C + 1	0.159	0.48	271	1.61	2.78	4.57	305	611	1,988	-1.3	3.9	8.7	4.80	6.49	8.20
PSME3	Spp increase unconditionally with N dep	PNW	<i>Pseudotsuga menziesii</i> forest	Conifer forest	precip_mm + temp_C + 1	0.250	0.36	106	1.43	1.97	3.62	379	557	919	3.6	6.3	9.6	5.00	6.50	7.00
THOC	No N dep response	FIA	<i>Thuja occidentalis</i> forest	Conifer forest	pH + 1	0.320	0.38	24	4.17	6.81	9.08	617	832	1,235	2.7	4.8	7.2	3.69	5.46	7.90
TIAM	Spp decline conditional on temp	MN	<i>Tilia americana</i> - <i>Fraxinus americana</i> - <i>(Acer saccharum)</i> woodland	Broad-leaved woodland	N_dep + N:temp + precip_mm + temp_C + 1	0.600	0.40	81	4.69	10.33	14.06	583	743	886	3.8	6.3	7.7	5.00	6.71	7.90
PIPA2	Spp decline conditional on temp and pH	CVS	<i>Pinus palustris</i> woodland	Conifer woodland	N_dep + N:pH + N:temp + pH + precip_mm + temp_C + 1	0.614	0.57	199	5.59	8.99	15.06	1,103	1,356	1,697	15.2	18.8	22.8	3.40	4.59	5.98
PSME4	Spp increase unconditionally with N dep	PNW	<i>Pseudotsuga menziesii</i> woodland	Conifer woodland	precip_mm + temp_C + 1	0.289	0.55	656	1.45	2.43	4.40	244	617	1,544	0.3	4.4	8.8	5.00	6.39	8.20
ARTR1	Spp decline unconditionally with N dep	Knutson	<i>Artemisia tridentata</i> shrubland	Shrubland	N_dep + precip_mm + 1	0.150	0.13	143	1.26	2.09	3.79	205	265	331	6.8	9.0	10.7	7.00	7.98	9.10
ARTR2	Spp increase conditional on pH	PNW	<i>Artemisia tridentata</i> shrubland	Shrubland	N_dep + N:pH + pH + precip_mm + temp_C + 1	0.229	0.50	171	1.60	2.74	4.57	243	543	985	0.9	3.9	9.6	5.20	6.64	8.20
SYAL	No N dep response	PNW	<i>Symphoricarpos albus</i> shrubland	Shrubland	temp_C + 1	0.546	1.00	31	1.60	2.53	4.07	330	513	877	2.5	5.3	8.1	5.20	6.72	8.20
ANGE1	Spp decline conditional on temp	MN	<i>Andropogon gerardii</i> - <i>(Sorghastrum nutans)</i> herbaceous	Grassland	N_dep + N:temp + precip_mm + temp_C + 1	0.351	0.67	64	8.71	12.06	14.01	616	749	882	6.3	7.0	7.8	5.50	7.13	8.20
FEID	Spp increase conditional on temp	PNW	<i>Festuca idahoensis</i> Alpine herbaceous	Grassland	N_dep + N:temp + pH + precip_mm + temp_C + 1	0.173	0.71	330	1.81	2.90	4.57	363	612	1,088	-0.8	3.3	8.8	5.30	6.60	8.20
SCSC	Spp decline unconditionally with N dep	MN	<i>Schizachyrium scoparium</i> - <i>Bouteloua curtipendula</i> herbaceous	Grassland	temp_C + 1	0.093	0.22	267	8.37	11.70	14.28	604	751	895	5.2	7.0	8.3	5.40	7.22	7.90