

D2/D3 dopamine supports the precision of mental state inferences and self-relevance of joint social outcomes

Received: 31 May 2023

J. M. Barnby^{1,2}✉, V. Bell³, Q. Deeley², M. A. Mehta² & M. Moutoussis^{4,5}

Accepted: 22 February 2024

Published online: 5 April 2024

 Check for updates

Striatal dopamine is important in paranoid attributions, although its computational role in social inference remains elusive. We employed a simple game-theoretic paradigm and computational model of intentional attributions to investigate the effects of dopamine D2/D3 antagonism on ongoing mental state inference following social outcomes. Haloperidol, compared with the placebo, enhanced the impact of partner behaviour on beliefs about the harmful intent of partners, and increased learning from recent encounters. These alterations caused substantial changes to model covariation and negative correlations between self-interest and harmful intent attributions. Our findings suggest that haloperidol improves belief flexibility about others and simultaneously reduces the self-relevance of social observations. Our results may reflect the role of D2/D3 dopamine in supporting self-relevant mentalising. Our data and model bridge theory between general and social accounts of value representation. We demonstrate initial evidence for the sensitivity of our model and short social paradigm to drug intervention and clinical dimensions, allowing distinctions between mechanisms that operate across traits and states.

Dysregulated striatal dopamine has been identified as a key causal component in psychosis. Influential work proposed that striatal dopamine mediates aberrant salience leading to atypical perceptual experiences^{1–3}. More recent social-developmental models have highlighted the role of dopamine as a key point of convergence for a number of causal social and developmental factors, such as trauma, genetic vulnerability and cannabis use⁴. This has been supported by molecular and neuroimaging studies suggesting that developmental adversities (for example, refs. 5,6) increases pre-synaptic turnover of dopamine in striatal regions that may fuel the onset^{7–9} and exacerbation^{10,11} of psychosis symptoms.

Antipsychotics are the first-line treatment for psychosis and have good evidence for their efficacy¹². Although they are thought to enact their therapeutic efficacy via D2/D3 dopamine antagonism, the exact

mechanism by which their pharmacological effect reduces symptoms through the modulation of neurocognitive processes is still poorly understood. Although recent investigations into the links between striatal hyperdopaminergia and psychosis have been important in identifying important risk factors, and have offered important hypotheses for the causes of psychosis and psychotic symptoms at the neurobiological level, they have not been able to explain how they alter cognition beyond citing salience as a key mechanism. The end point of such causal pathways in psychiatry is likely to be dynamic, multidimensional, context-sensitive cognitive processes¹³. Computational modelling is an approach that allows these dynamic cognitive processes to be mathematically implemented and has the potential to more effectively connect mechanisms with psychiatric phenomenology^{14,15}, offering precise accounts of complex behaviour that are more amenable to

¹Department of Psychology, Royal Holloway, University of London, London, UK. ²King's College London, Cultural and Social Neuroscience Group, Department of Neuroimaging, Institute of Psychiatry, Psychology & Neuroscience, University of London, London, UK. ³Clinical, Educational, and Health Psychology, University College London, London, UK. ⁴Wellcome Centre for Human Neuroimaging, University College London, London, UK. ⁵Max Planck UCL Centre for Computational Psychiatry and Ageing, University College London, London, UK. ✉e-mail: joseph.barnby@rhul.ac.uk

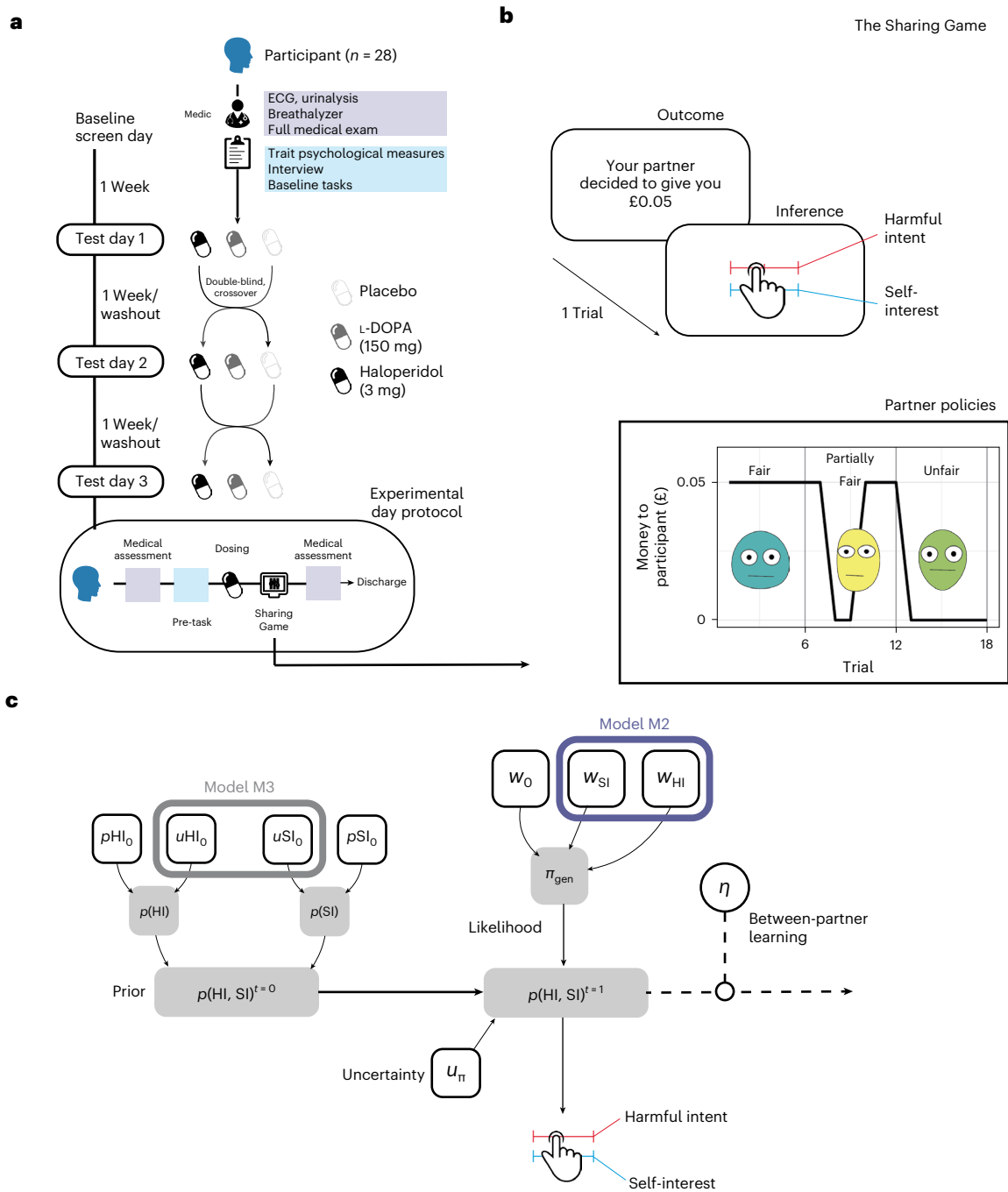


Fig. 1 | Experimental design and model space. a, Participants were entered into a double-blind, placebo-controlled, within-subject experimental design. ECG, electrocardiogram. **b**, Participants engaged in a three-partner version of the sharing game (inset). Here, partners were assigned the role of Dictator and, on each trial, could either take £0.10 for themselves (unfair outcome), or take £0.05 and give the participant £0.05 (fair outcome). Participant reported two types of attributional intent concerning the motivations of the partner after

each outcome. These included harmful intent attributions and self-interest attributions. Partner order was randomized, and partner change was signalled. **c**, Model space used to test whether dopamine manipulations were best explained by the full model (M1), a model that constrained policy updating to a single sensitivity parameter for each attribution (M2), or a model that constrained prior uncertainty to a single parameter (M3; Table 1). Although filled objects are free parameters. Grey shaded objects are probability distributions.

formal testing, refutation and refinement. Within this framework, dopaminergic alterations have been linked to computational processes such as belief updating^{16,17}, expectations of belief volatility^{18–20} and model-based control²¹.

One particularly disabling core symptom of psychosis is paranoia, the unfounded belief that others are trying to cause you harm^{22,23}. Psychologically, paranoia is characterized by heightened sensitivities to interpersonal threat²⁴, attributing negative outcomes to external,

personal causes²⁵ and overly complex mentalising^{26,27}. Developing computational theories to bridge the gap between the phenomenology and the neurocognitive mechanisms of paranoia requires particular considerations. Computational approaches in the social domain must sufficiently account for large—and often recursive—action spaces²⁸. These structural principles are appropriate for psychiatric symptoms, which inherently involve alterations to interpersonal beliefs concerning the self and others²⁹.

Models of intentional attributions—explicit inferences about the mental state of others—allow for analyses that are theoretically related to ongoing paranoia. Current models include mechanistic explanations for perceived changes in the harmful intent and self-interest that might motivate the actions of another. Past work suggests that high trait paranoia is associated with rigid priors about the harmful intent of partners, and a belief that a partner's actions are not consistent with their true intentions^{30,31}. Several predictions can be made concerning the influence of dopamine D2/D3 antagonism on paranoia. Synthetic in silico models³², neuroimaging evidence³³, prior predictions³¹ and psychopharmacological work^{21,34} predict that D2/D3 antagonism will increase belief flexibility and improve consistency of the self's model of others, which in turn should reduce self-relevant attributions of harmful intent following social outcomes; however, this has yet to be tested.

Although key binding sites of most antipsychotics are thought to work through their action at D2/D3 dopamine receptors, how they influence the cognitive processes of paranoia is unknown. Given the experimental evidence and synthetic predictions on the role of D2/D3 dopamine antagonism on improvements in belief updating, reductions in harmful intent, increases in prosocial behaviours, and the impact of high trait paranoia on the consistency of a self's model of others, it follows that the mechanism of action of D2/D3 antagonism on harmful intent attributions may occur through an increase in belief flexibility and the consistency of a self's model of others. Following from our preregistered behavioural experiment³⁵, we further examine the causal influence of D2/D3 dopamine receptor antagonism on computational mechanisms governing intentional attributions within a simple game-theoretic context. Using a formal model of intentional attributions and an iterative Dictator game^{30,31}, we test the impact of haloperidol, a D2/D3 antagonist and L-3,4-dihydroxyphenylalanine (L-DOPA, a presynaptic dopamine potentiator) on paranoid beliefs using past data³⁵.

Primarily we assessed whether haloperidol alters key computational processes involved in mental state inferences, allowing distinctions between trait representational changes (priors) and state-learning processes (policy flexibility, uncertainty) along each attributional dimension (harmful intent and self-interest). Given the absence of any consistent descriptive effects of L-DOPA in this experiment, we modelled the data under an assumption that there would be no opposing effects on model parameters under L-DOPA versus haloperidol.

Results

Participants ($n = 28$) played a within-subjects, multi-trial modification on the Dictator game (hereafter called The Sharing Game) designed to assess paranoia^{35,36}, following administration of haloperidol (3 mg), L-DOPA (150 mg) or placebo in a within-subject design (Fig. 1; see Methods for more details). After each trial of The Sharing Game, participants were asked to rate on a scale of 1–100 (initialized at 50) to what degree they believed that their partner was motivated by a desire to: (1) earn more (self-interest), and (2) reduce the participant's bonus in the trial (harmful intent). From the participant's perspective, the actions of the partner can be framed as either arising from motivations that

concern the gain of value for the partner irrespective of the participant (other-relevant) or arising from motivations that concern the loss of value for the participant (self-relevant).

Behavioural results

Behavioural results were published previously³⁵. To summarise, when averaged over all Dictators, haloperidol caused a reduction in harmful intent attributions versus placebo (-0.17 , 95% CI: -0.28 , -0.05), whereas L-DOPA did not. Haloperidol also increased self-interest attributions versus placebo (0.16 , 95% CI: 0.05 , 0.27), whereas L-DOPA did not. Unfair and partially fair Dictators both elicited higher harmful intent (partially fair = 0.28 , 95% CI: 0.16 , 0.40 ; unfair = 0.75 , 95% CI: 0.63 , 0.87) and self-interest attributions (partially fair = 0.59 , 95% CI: 0.63 , 0.87 ; unfair = 1.16 , 95% CI: 1.05 , 1.27) versus fair Dictators.

Model comparison and recovery

Bayesian hierarchical fitting and comparison identified that, at the group level (Fig. 2a), participants under placebo and haloperidol were best fitted by model 3. This model assumed that agents use a single uncertainty over both attributional priors, but used separate likelihood weights to update their beliefs about their partners' policy. In contrast, participants under L-DOPA were best fit by model 2. This model assumes participants hold individual uncertainties over their prior beliefs, although use the same likelihood weight to update both attributional dimensions. Importantly, model parameters under L-DOPA were not opposing haloperidol changes versus placebo, supporting behavioural analyses (Supplementary Fig. 10).

We examined model generative performance and reliability for each condition. We extracted parameters for each individual under each condition according to the model that bore the most responsibility for their behaviour (Fig. 2b). We then simulated data for each participant, with their individual-level parameters for each condition and model, and re-estimated model comparison, recovered each model, generated attributions for each trial and dictator condition, and fitted regression models for main effects. Bayesian hierarchical fitting and comparisons on simulated data demonstrated excellent similarity with group- and individual-level model responsibility and exceedance probabilities from real data (Supplementary Fig. 1a). Likewise, individual-level parameters demonstrated excellent recovery (all Pearson's r values > 0.71 , P -values ≈ 0 ; Supplementary Fig. 1b,c,d). Simulated and real attributions demonstrated excellent recovery across all drug and dictator conditions (all Pearson's r values > 0.62 , P -values ≈ 0 ; Supplementary Fig. 1e). Simulated attributions also recovered the main effects of drug and dictator conditions on attributional dynamics: haloperidol demonstrated reductions in harmful intent versus the placebo (-0.26 , 95% CI: -0.36 , -0.16), whereas L-DOPA did not, and haloperidol increased self-interest attributions versus the placebo (0.26 , 95% CI: 0.15 , 0.37), whereas L-DOPA did not.

We were most interested in examining the effect of haloperidol versus the placebo to understand the mechanism behind the observed descriptive behavioural results. As model 3 achieved group-level dominance across both placebo and haloperidol conditions, we were able

Fig. 2 | Model comparison, recovery and generative performance. **a**, Model responsibility across all three drug conditions. Greater model responsibility at the group and individual levels indicates the most likely generative model to explain the data. Ex. prob. = exceedance probability that a single model best defines group behaviour; freq = model frequency that each model is the best fitting model for participants. **b**, Model recovery. All recovery analyses used $n = 28$ synthetic participants—one for each real parameter set approximated from the data. The Hierarchical Bayesian Inference (HBI) algorithm correctly identified the correct model for most participants with trivial differences between model frequencies. **c**, Parameter recovery. Pearson correlation matrix of common parameters across all drug conditions for simulated (y-axis) and real (x-axis) data. All correlations were over 0.71 (P -values < 0.001). Crosses indicate non-

significant associations. **d**, Parameter recovery. Individual Pearson correlations between common parameters across haloperidol and placebo conditions for simulated (y-axis) and real (x-axis) data. All correlations were over 0.71 (P -values < 0.001). Black lines indicate the linear model of perfect association ($r = 1$). **e**, Parameter recovery. Individual Pearson correlations between common parameters across all drug conditions for simulated (y-axis) and real (x-axis) data. Black lines indicate the linear model of perfect association ($r = 1$). **f**, Top panel: Pearson correlation (\pm s.e.m.) between simulated and real harmful intent (left) and self-interest (right) attributions across all Dictator policies ($n = 28$; P -values < 0.001). Bottom panel: simulated harmful intent (left) and self-interest (right) mean attributions (\pm s.e.m.) for each drug condition and Dictator policy.

to directly compare all individual-level, winning model parameters between conditions $\{pHI_0, pSI_0, u_{Pri}, u_n, \eta, w_0, w_{HI}, w_{SI}\}$ (Table 1).

Haloperidol reduces harmful intent priors and precision

We examined the differences between individual-level parameters within subjects for haloperidol versus placebo (Fig. 3a; see

Supplementary Fig. 4 for effect sizes). This suggested that haloperidol increased reliance on learning about a partner just encountered, relative to pre-existing prior beliefs about partners in general (η ; mean diff. = 0.15, 95% HDI: 0.03, 0.26; effect size = 0.66, 95% HDI: 0.22, 1.10). Haloperidol did not influence the consistency with which partners were believed to act in accordance with their character (u_n).

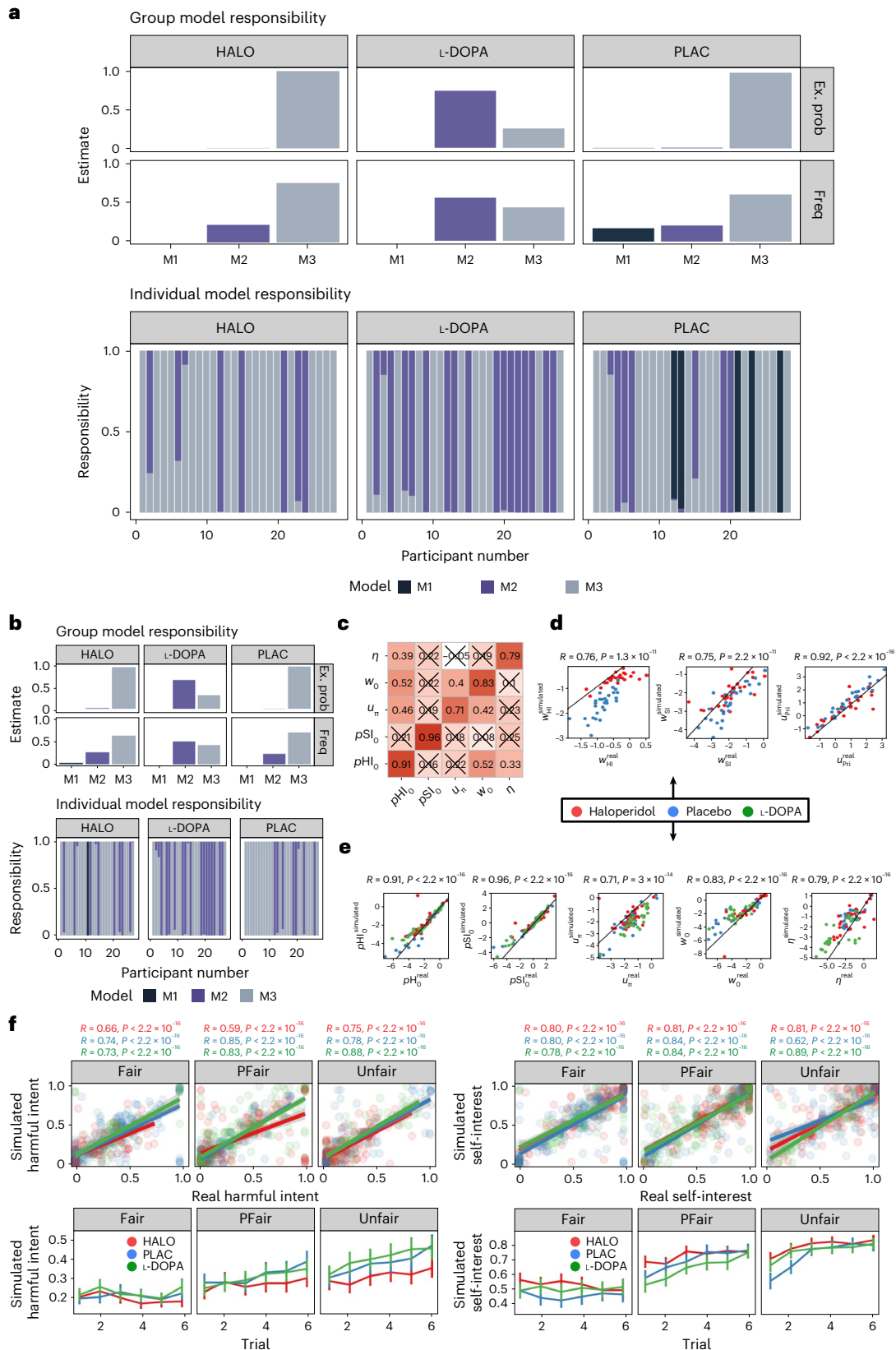


Table 1 | Winning model parameters and their role in the model

Parameter	Generative purpose
pHI_0	Magnitude of the prior that the actions of others are generally motivated by harmful intent (HI) towards the self, $p(HI)^{t=0}$. Increasing this parameter increases the belief that a partner is motivated by harmful intent before any actions are observed.
pSI_0	Magnitude of the prior that the actions of others are generally motivated by self-interest (SI) irrespective of the self, $p(SI)^{t=0}$. Increasing this parameter increases the belief that a partner is motivated by self-interest before any actions are observed.
u_{Pri}	Uncertainty over priors. Increasing this parameter broadens the prior distribution of both $p(HI)^{t=0}$ and $p(SI)^{t=0}$.
Prior	$p(HI)^{t=0} \approx \text{Bin}(HI; pHI_0, u_{Pri}, NB)$ $p(SI)^{t=0} \approx \text{Bin}(SI; pSI_0, u_{Pri}, NB)$ $p(HI, SI)^{t=0} = p(HI)^{t=0} p(SI)^{t=0}$ $NB=9$
w_0	Intercept of the likelihood matrix, π_{gen} , which calibrates the magnitude of attributional change when a fair or unfair action is made by a partner.
w_{HI}	Impact on beliefs that an outcome (rew) is motivated by harmful intent. Increasing this parameter leads to greater influence of a partner's behaviour on attributions of harmful intent (belief flexibility).
w_{SI}	Impact on beliefs that an outcome (rew) is motivated by self-interest. Increasing this parameter leads to greater influence of a partner's behaviour on attributions of self-interest (belief flexibility).
Likelihood	$\pi_{gen}(rew=0; HI, SI) = \sigma(w_0 + [w_{HI} \times HI - \delta] + [w_{SI} \times SI - \delta])$ $\pi_{gen}(rew=0.5; HI, SI) = 1 - \pi_{gen}(rew=0; HI, SI)$ $\delta = \frac{NB + 1}{2}$ $\sigma(x) = \frac{1}{1 + e^{-x}}$
Update	$p(HI, SI)^t = \frac{\pi_{gen}(rew; HI, SI) p(HI, SI)^{t-1}}{\sum_{HI', SI'} \pi_{gen}(rew; HI', SI') p(HI', SI')^{t-1}}$
u_n	The consistency with which partners were believed to act in accordance with their character. Higher values reduce consistency, causing a partner's behaviour to have less impact on beliefs.
Consistency rule	$p(HI, SI)^t \propto p(HI, SI)^{\frac{1}{u_n} + \xi}$ $\xi = 0.02/NB^2$
η	Controls the mixture of prior and posterior beliefs used as a starting point for each new encounter. Higher values indicate more reliance on information gathered from the last encounter, rather than reverting to prior beliefs. The product from the below equation, $\frac{p(HI, SI)^{t-C}}{p(HI, SI)^{t-C}}$ replaces $p(HI, SI)^{t-1}$ when beginning a new encounter.
Change point	$\frac{p(HI, SI)^{t-C}}{p(HI, SI)^{t-C}} = p(HI, SI)^{t=0} \times [1 - \eta] + p(HI, SI)^{t-C} \times \eta$ $C = \text{final action of an other in an interaction}$

By using model fitting procedures modellers can invert the model to approximate the parameter values that may give rise to the observed data. This includes the hidden, prior beliefs of each participant given the variance and magnitude of observed attributions. Using fitted parameter values to simulate each participant allows for generation of pseudo-experimental data—in this case, an agent's reported intentional attributions, which we can directly compare with the real data. This also approximates the prior beliefs of each participant given the variance and magnitude of observed attributions. NB, number of bins discretizing the variable represents each attribution (in this case each distribution comprises nine bins); Bin, binomial distribution with an added precision parameter, that is, in the case of HI: $p(HI)^{t=0} \approx \text{Bin}(HI; pHI_0, u_{Pri}, NB) \approx p(HI)^{t=0} \approx B(HI; pHI_0, NB)^{1/u_{Pri}}$. The bold text indicates the free parameters of interest that contribute to the equations.

Haloperidol increased learning flexibility over harmful intent attributions only. Haloperidol increased the impact of partner behaviour on harmful intent attributions (w_{HI} ; mean diff. = 0.10, 95% HDI: 0.06, 0.13; effect size = 1.20, 95% HDI: 0.64, 1.75), but not over self-interest (w_{SI})—a partner's actions had more impact on a participant's beliefs about their true motivations of intentional harm. Haloperidol also caused the intercept of the policy matrix to be drawn towards 0, allowing greater updating parity for each unfair or fair partner action (w_0 ; mean diff. = 0.58, 95% HDI: 0.01, 1.10; effect size = 0.43, 95% HDI: 0.02, 0.82). The w_0 effect size should be treated with caution; the posterior distribution is within the region of practical equivalence (Supplementary Fig. 4).

We sought to further probe the model-based implications of drug differences on attributional flexibility in detail. Simulations on the marginal effect of w_{HI} on attributional dynamics are suggestive of its role in modulating the precision ($1/\sigma^2$; inverse variance) of attributions over all trials, irrespective of Dictator policy (Fig. 3b). To establish this we used a regression model including w_{HI} as a linear term and w_0 as a quadratic term—this was most parsimonious compared to using w_0 as a linear term (Akaike Information Criterion [AIC] = 568 versus 1,123). There was a main effect of w_{HI} on the precision of harmful intent attributions (−6.13, 95% CI: −6.28, −5.97; effect size = −0.88, 95% CI: −0.92, −0.85). There was a small effect of w_0 within the same model (−0.06, 95% CI: −0.064, −0.056, effect size = −0.11, 95% CI: −0.14, −0.08). There was a significant but small interaction of w_0 and w_{HI} on the precision of harmful intent (−0.22, 95% CI: −0.25, −0.20; effect size = −0.05, −0.08, −0.02). Importantly, increased w_{HI} reduced harmful intent attributions (−0.93, 95% CI: −0.95, −0.92; effect size = −0.13, 95% CI: −0.14, −0.13) through reductions in the precision of harmful intent.

We found evidence that a greater w_{HI} (compare with effect of haloperidol) may reduce precision most under conditions of ambiguity. Specifically, the precision of harmful intent attributions is lower in partially fair versus fair Dictators (−0.24, −0.33, −0.15; effect size = −0.24, 95% CI: −0.33, −0.15), but unfair versus fair Dictators produced equivalent precision. Dictator policy interacts with w_{HI} : higher w_{HI} is associated with lower precision under partially fair versus fair dictators (−0.77, 95% CI: −1.42, −0.42; effect size = −0.11, 95% CI: −0.21, −0.02). Thus, higher w_{HI} accentuates flexibility within and between partners, but most in ambiguous social contexts in which paranoia often flourishes. There was no interaction for unfair dictators versus fair dictators (Supplementary Fig. 5).

Haloperidol had no net significant influence on pHI_0 , u_{Pri} or pSI_0 (Supplementary Table 1). Individual parameter analysis suggests that haloperidol has a predominant net influence on the flexibility of belief updating about a specific context (here, that of our task). Under the influence of haloperidol, participants' assumptions of each new encounter are more amenable to change under the influence of recent encounters.

Model covariation differentiates haloperidol from the placebo

From our analysis we can conclude that the model is accounting for the true observed data relatively well. Isolated parameter changes between conditions suggest this effect is primarily driven by increases in the impact of partner behaviour on beliefs about harmful intent, w_{HI} and increased learning from experience, η . Considered separately, these key parameters did not fully explain how the model accounted for behaviour changes induced by haloperidol (Supplementary Fig. 4). We therefore sought to identify, through exploratory factor analysis, meaningful patterns over the covariation induced by haloperidol.

We found that three factors best accounted for the data (Supplementary Fig. 9), with the first demonstrating the greatest eigenvalue (factor 1 = 2.82; factor 2 = 1.36; factor 3 = 1.13). K-fold cross-validation within a logistic model demonstrated that a two-factor solution provided the best median accuracy to discriminate between drug conditions (mean accuracy = 0.86) and had the lowest AIC (40.3;

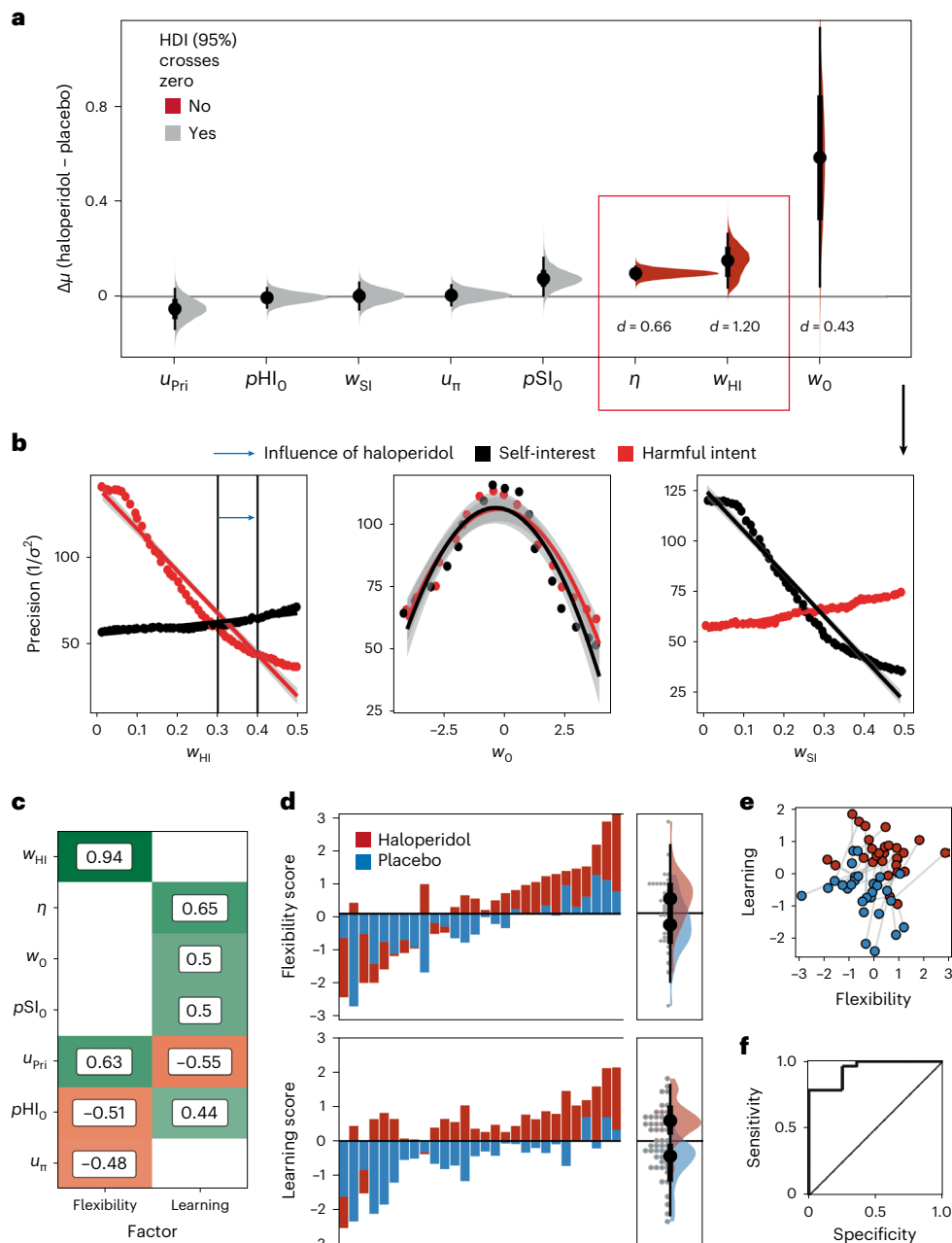


Fig. 3 | Influence of haloperidol on the winning model. a, Bayesian t -test results ($n = 28$) assessing the difference and uncertainty (median \pm 95% HDI) of the change in mean parameter estimates ($\Delta\mu$; difference in mean) between placebo and haloperidol. Red distributions indicate that the 95% high-density interval (HDI) does not cross 0, suggesting reasonable certainty that the mean difference is not an artefact of statistical noise. The d values indicate the median effect size (Cohen's d ; Supplementary Fig. 4). The red box indicates the parameters where the effect size distributions were most robust, where the 95% HDI lay outside of the region of probable equivalence with the null hypothesis. **b**, Simulations (\pm s.e.m.) of the marginal effect of likelihood parameters on the precision ($1/\sigma^2$; inverse variance) of harmful intent (red) and self-interest (black) attributions over all trials, controlling for Dictator style. Vertical lines are indicative of the median individual parameter estimates from both haloperidol and placebo groups. The blue arrow indicates the difference from placebo to haloperidol (see Supplementary Fig. 3 for trial-wise and within-Dictator precision changes). Simulations are consistent with the notion that w_{HI} increases flexibility within

and between contexts, accentuating smooth learning. Note that there was no significant correlation between w_0 , w_{SI} and w_{HI} in our parameter estimation from our real data (all P -values > 0.05 ; Supplementary Fig. 2), suggesting independent contributions from each to the attributional dynamics. **c**, Factor loading of each parameter on flexibility (factor 1) and learning (factor 2) dimensions. A loading filter of $|0.4|$ was applied. Both of these factors can discriminate effectively between drug conditions. The w_{SI} term is not featured in this plot as it was not meaningfully loaded onto either factor. **d**, Factor scores (absolute value) for each individual participant ($n = 28$) for both haloperidol (red) and placebo (blue) conditions ordered from low to high. The panels on the right demonstrate the marginal loading across participants. **e**, Candyfloss plot factor scores for each individual participant. The grey lines indicate that the same participant was responsible for each connected point under placebo (blue) and haloperidol (red). **f**, Receiver operating characteristic describing the sensitivity and specificity of factors to differentiate drug conditions. Area under the curve = 0.91; sensitivity = 0.8; specificity = 0.78.

Supplementary Fig. 9). Each factor was able to predict drug condition independently (factor 1 = 1.52, 95% CI: 0.50, 2.91; factor 2 = 3.08, 95% CI: 1.72, 5.03), and there was a large effect found between conditions

using Bayesian paired t -tests (factor 1: mean diff. = 0.76, 95% HDI = 0.37, 1.17; effect size = 0.94, 95% HDI = 0.35, 1.59; factor 2: mean diff. = 1.34, 95% HDI = 0.87, 1.85; effect size = 1.23, 95% HDI = 0.64, 1.84; Fig. 3f).

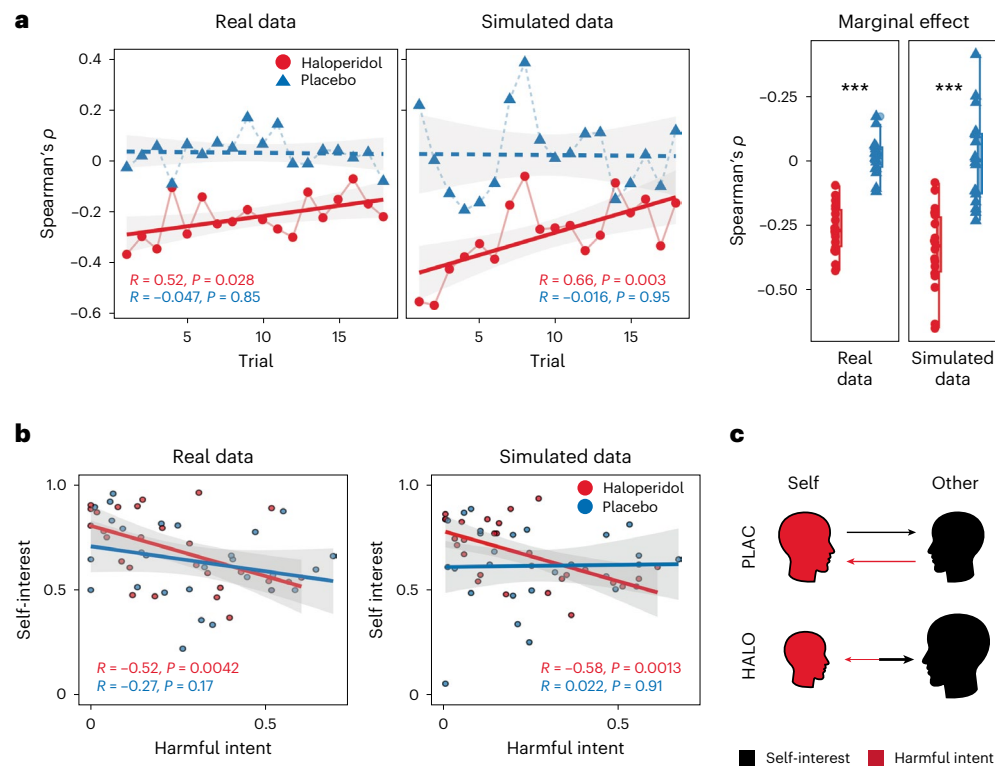


Fig. 4 | Association of mental state attributions between drug condition.

a, In both real and simulated data ($n = 28$), haloperidol (red) versus placebo (blue) induced a trial-wise negative Pearson association (\pm s.e.m.) between harmful intent and self-interest, which decayed over time for both real ($R = 0.52, P = 0.029$) and simulated ($R = 0.65, P = 0.0046$) data. The right-most panel shows the marginal effect (box plots demonstrate minimum, interquartile range, median and maximum values) of trial-wise correlations between conditions. Using linear regression, we show that the difference between Pearson correlations between haloperidol and placebo was significant for both real (estimate = 2.26, SE = 0.33, $P = 9.29 \times 10^{-8}$) and simulated (estimate = 2.23, SE = 0.44, $P = 1.84 \times 10^{-5}$) data. *** = $P < 0.001$. **b**, There was a general negative Pearson association (\pm s.e.m.)

between harmful intent and self-interest found under haloperidol for mean attributions across all 18 trials; this was not true for the placebo. **c**, Summary of main effects between drug conditions on self and other oriented intentional attributions following social outcomes. Both trial-wise and averaged associative analyses indicate that other-oriented attributions concerning self-interest of others (black), and self-oriented attributions concerning the harmful intent of others (red), are independent under the placebo (PLAC) but coupled under haloperidol (HALO). Under haloperidol this coupling is biased towards exaggeration of other-oriented attributions and diminishment of self-oriented attributions.

Factor 1 (flexibility; Fig. 3c) was typified by high values of w_{HI} , and greater consistency between beliefs that a partner's actions are indicative of their true motivations, u_{π} . Factor 2 (learning; Fig. 3c) comprised high values of η , larger intercepts over the policy matrix, w_0 , and higher values over priors pSI_0 ; pHI_0 and u_{pri} were oppositely loaded onto each factor and were likely to nullify each other in scenarios in which participants scored strongly on both (Fig. 3e). We note that pHI_0 and u_{pri} load with slightly more absolute value on the flexibility factor. For completeness, the third factor exclusively comprised w_{SI} above a cut-off of $|0.4|$ (loading = 0.99), but it was not found to be a meaningful factor in differentiating drug scores following cross-validation and logistic model comparisons.

Haloperidol compresses the dimensionality of partner policy

Finally, we explored the impact of haloperidol on attributional coupling: the dependency between intentional attributions over time. This allows analysis into the dependency of different intentional components. To calculate this we estimated Spearman correlations between harmful intent and self-interest for each trial across the sample, controlling for the type of Dictator policy affiliated. This revealed that although harmful intent and self-interest are attributed independently of one another under the placebo (mean ρ [s.d.] = 0.03 [0.07]; replicating ref. 35), under haloperidol they are negatively associated (mean ρ [s.d.] = -0.22 [0.08]), and this difference is significant (mean diff. = -0.26, 95% CI: -0.32, -0.20; effect size = 2.22, 95% HDI: 1.22, 3.24). This relationship was

replicated using simulated model predictions (mean diff. = -0.25, 95% CI: -0.34, -0.17; effect size = -1.53, 95% HDI: -2.28, -0.78; Fig. 4a). There was evidence that the negative association induced under haloperidol decays over time (Pearson's $r = 0.52, P = 0.029$). The same is not true under placebo (Fig. 4a). This interaction was not significant (regression coeff. = -0.06, 95% CI: -0.12, 0.03). In summary, haloperidol causes harmful intent and self-interest attributions to become less independent. This means that under haloperidol participants are more likely to believe someone must be more self-interested if they are perceived to be less intentionally harmful.

Discussion

We sought to identify the computational mechanisms that explain how pharmacological alteration of dopamine function alters attributions of harmful intent—an important feature of paranoia—given our previous findings that haloperidol reduced harmful intent attributions and increased self-interest attributions in healthy participants (see ref. 35 for a previously published behavioural analysis). Here we tested different computational hypotheses to account more mechanistically for these effects. The data were best fit by a model utilizing a common uncertainty parameter over priors, but separate likelihood weights for updating attributions. Using this model, we found evidence that haloperidol reduced the precision of harmful intent (but not self-interest) attributions allowing more belief flexibility between partners. Haloperidol also increased the impact of learning from each

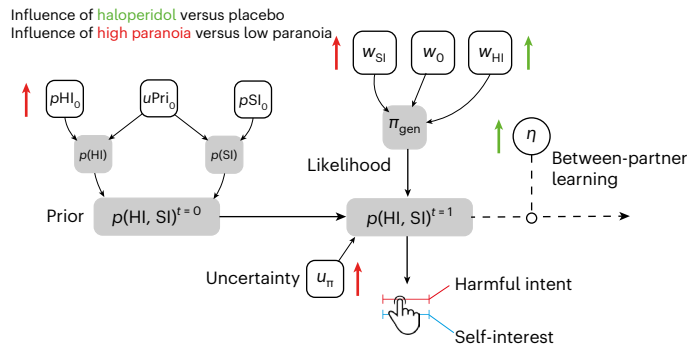


Fig. 5 | Summary of experimental parameter changes from current and past works. Experimentally observed effects on our model. The impact of haloperidol on model parameters is indicated by green arrows. Prior results from the impact of high trait paranoia^{30,31} are indicated by red arrows.

encounter; participants relied less on their prior beliefs about the population as a whole. These individual parameter effects were embedded within covariational model alterations that together accounted for attributional change under haloperidol. These changes also caused self-interest and harmful-intent attributions to become negatively associated, suggesting a compression of attributions into a single interpersonal dimension under haloperidol. Together, our findings indicate haloperidol promotes flexibility regarding attributions of harmful intent to others by reducing the perceived relevance of the actions of others to the self (Fig. 5). In clinical environments this may allow space to reframe beliefs.

Our findings indicate a reduction in the influence of priors and more flexible beliefs under haloperidol. Past research links tonic dopamine at D2/D3 receptors to efficient encoding of meaningful stimuli, and Bayes optimality³³, cognitive control³⁷ and sustained attention³⁸. Under the model-based, model-free control framework³⁹, recent work showed that a D2/D3 antagonism increased model-based control and decision flexibility²¹, and increased belief flexibility during a trust game³⁴. This may be particularly useful in ‘climbing out’ of paranoia, where one is reluctant to take in positive information about others for fear of false reassurance. At face value our results conform with previous work: under haloperidol, posteriors are more flexible and less influenced by priors, suggesting more confidence in beliefs about the motivation of partners. However, this general account does not explain why our data show asymmetric decreases in harmful intent and increases in self-interest.

One hypothesis is that haloperidol reduces the perceived self-relevance of outcomes under uncertainty. Social interaction rapidly increases the complexity of possible actions that may be taken. Humans try to reduce this uncertainty by relying on available heuristics, such as using self-preferences as an easily accessible prior belief about others^{40–42}. When ambiguity increases, greater uncertainty about others^{19,30,31} and environments²⁰ can increase the perception of social threat. Our analysis suggests that haloperidol may attenuate the relationship between uncertainty and attributions of harmful intent by reducing the perceived self-relevance of others’ actions; attributions of harmful intent, by definition, are inferences about the relevance of threat to the self from another. Given the role of the striatum and medial prefrontal cortex in regulating threat evaluation under stress⁴³, this reduction in self-relevance may also interact with common neural implementations of self-other modelling⁴⁴; haloperidol may modulate the degree to which information is modelled as self- or other-relevant. The degree to which D2/D3 dopamine receptor function is specific to harmful intent or all attributions that are relevant to the self (for example, altruistic intent of another) can be tested by including an extra dimension within our model; there are a number of hypotheses that can be made with such a modification (see Supplementary Fig. 7).

This pattern leads to a further, complementary proposition: haloperidol may reduce self-relevance through reductions in the complexity or depth of recursive mentalizing (how a self thinks about another’s model of the self). In general, the ability to recursively mentalize is computationally expensive^{45–47}. Humans try to use cheaper strategies when possible. Recursive mentalizing is context dependent: simply, in competitive social scenarios humans are more likely to plan ahead more deeply and entertain recursive beliefs about another’s model of the self⁴⁸. Mentalization gone awry has also been posited as a core driver of relationship difficulties in clinical populations: paranoias in borderline personality disorder and psychosis are explained as hypermentalization: the inference of overly complex mental states based on sparse data^{26,27,49,50}. An alteration in mechanisms that support self-relevant mentalizing may explain our findings. This notion is consistent with reported amotivation under haloperidol (individuals are less concerned by outcomes), the role of D2/D3 receptors in promoting cognitive control^{37,38} and prior work on the causal role of D2/D3 antagonism in trust behaviours³⁴; reductions in the immediate value (and therefore relevance) for the self may facilitate longer-term reciprocal trust behaviours without any need to engage deliberate reasoning about future outcomes. A core test of the hypothesis that D2/D3 dopamine is crucial for self-relevant, recursive mentalization is to use models of hierarchical mentalization in future experiments that allow estimation of recursive depth in joint social contexts.

The data presented here may be relevant beyond psychiatry. In behavioural economics, there have been several studies on the role of dopamine, reward and decision making in both social and non-social contexts⁵¹. Increasing dopamine availability has been shown to increase risky non-social decisions when self-gain is at stake⁵², suggesting that dopamine may inflate the attributed value of outcomes to the self. Our data imply that this role of dopamine in modulating monetary value to the self may reflect a broader role in representing the self-relevance of stimuli. The direction of this relationship (self-relevance precedes self-value, or vice versa) is a fruitful target for future research. Our data may also be relevant to the role of dopamine in moral behaviour. In one study, boosting D2/D3 dopamine with pramipexole reduced generosity, especially with close others⁵³. Our data complement this work, suggesting that D2/D3 dopamine is involved in calibrating the valuation of self-gain in social decision-making.

On a theoretical level, our formal model distinguishes between computational changes that result from prior representational biases (for example, higher trait paranoia) and acute state changes during social interaction where potential harm from others is a possibility (Fig. 5). Previous modelling with the same task³⁰—or a reversal variant of the task³¹—provided evidence that trait paranoia increases the magnitude of priors over harmful intent, the subsequent increase in the belief that the actions of others are not reflective of their true motivations and a reduced willingness to believe that changes to a partner’s behaviour are motivated by changes to their harmful intent. Naturally, this suggested that prior representations bias how social behaviour is interpreted. On the other hand, the present models suggest that haloperidol acts through increased reliance and impact of likelihoods on the formation of beliefs. Creating phenomenologically plausible formal models that are sensitive to different explanations of behavioural data has been a core aspiration of computational psychiatry^{13,14}. Models such as ours may be useful in distinguishing between longer-term development and near-term alterations in learning that may explain paranoia. Model parameters are constant on the timescale of tasks while potentially evolving at the timescale of personal development, illness and recovery, whereas learning and inference can be dissected on the timescale of task conditions and trials. Much like prior work distinguishing interventions of representational change (psychotherapy) and emotion modulation (antidepressants⁵⁴), our model may support similar distinctions following intervention. We thus hypothesize that

successful therapeutic use of haloperidol in paranoia will be associated with large changes in likelihood parameters described above but may leave intact, at least in the short term, prior beliefs about the harmful intent of others; D2/D3-independent processes may underpin ongoing vulnerability and may require further psychosocial learning. Our task may only pick up long-term representational (prior) changes following extended pharmacological therapy, or in combination with psychological therapy.

We note some limitations. First, we did not use a patient population, which means the extent to which the findings generalize to a population with persecutory delusions—rather than non-delusional paranoia—remains unclear. Likewise, in this first study we only included males to avoid hormonal heterogeneity, which might affect drug response and indeed the precise expression of dopaminergic mechanisms⁵⁵. However, this important limitation must be addressed in future studies with studies powered to examine the computational structure of antipsychotic medication in people of different hormonal status and gender. Second, we did not include any non-social comparator (for example, model-based decision making or volatile environments) when assessing the role of haloperidol on cognition. This leaves a divide between how dopamine influences non-social cognition and mental state inferences. Past work suggests some shared variance between more foundational computations (for example, decision temperature, belief updating) and paranoia^{20,31,33}. Replicating the present work with non-social comparators of our social task (for example, using a slot machine partner) may help understand the relations between formal theories of general decision making, and how this is expressed at a recursive and intentional level in the same individuals. Third, we did not use a design that probes how dopamine may facilitate generalization of social knowledge outside of our game theory task. Prior work has demonstrated that representations about learned partners can pass on from one context to another⁴⁵; once a representation is learned using computationally intensive resources, a cheaper, heuristic model can be used. This relates to the question of whether an associative model of updating may be more efficient once a policy is known, and given our findings, whether haloperidol causes a faster transition. Finally, despite the difference in model responsibility, we did not find any influence of L-DOPA on behaviour. This may be due to an insufficient dose or translation of L-DOPA leading to an increase in dopamine release, or the unspecific postsynaptic binding that may result from any successfully increased dopamine release as a consequence of L-DOPA.

Methods

Participants

This study was approved by KCL ethics board (HR-16/17-0603). All data were collected between August 2018 and August 2019. Participants were recruited through adverts in the local area, adverts on social media, in addition to adverts circulated via internal emails. Participants provided written informed consent to take part.

Eighty-six participants were preliminarily phone screened; 35 participants were given a full medical screen; 30 healthy males were recruited to take part in the full procedure; 2 failed to complete all experimental days, leaving 28 participants for analysis (age (mean[s.d.]) = 29.21[8.61]). Inclusion criteria were that participants were healthy males, between the ages of 18 and 55. Participants were excluded if they had any evidence or history of clinically significant medical or psychiatric illness; if their use of prescription or non-prescription drugs was deemed unsuitable by the medical team; if they had any condition that may have inhibited drug absorption (for example gastrectomy); a history of harmful alcohol or drug use determined by clinical interview; use of tobacco or nicotine-containing products in excess of the equivalent of five cigarettes per day; a positive urine drug screen; or were unwilling or unable to comply with the lifestyle guidelines. Participants were excluded who, in the opinion of the medical

team and investigator, had any medical or psychological condition, or social circumstance, that would impair their ability to participate reliably in the study, or who may increase the risk to themselves or others by participating. Some of these criteria were determined through telephone check for non-sensitive information (age, gender, general understanding of the study and overall health) before their full screening visit. Participants were paid £100 for successful completion of all experimental days, and £20 if they failed screening and were subsequently excluded.

Procedure

This study was part of a larger study that assessed the role of dopaminergic modulation on personality, beliefs and social interaction. Here we focus on the role of dopamine antagonism and pre-synaptic increases in the attribution of mental state inferences during a Dictator game (described below; see Fig. 1a).

The full procedure for participant screening is documented in a prior publication³⁵. Briefly, participants who passed the brief phone screening were invited to attend an on-site screening day (see above). Participants were tested for drugs of abuse (SureScreen Diagnostics) and alcohol (breath test) prior to each experimental day and were excluded if any test was positive. Participants were given at least 7 days, but no more than 2 months, in between experimental days to allow for drug washout.

On experimental days, participants were randomized to be initially administered either a placebo or 3 mg haloperidol in two capsules, and 10 mg of domperidone (to reduce known side effects of vomiting and nausea that can appear in some recipients) in one capsule (3 caps total). After 30 min, participants were dosed a second time with either 150 mg of co-beneldopa (herein referred to as L-DOPA) or placebo in two capsules. Participants would never receive haloperidol and L-DOPA in the same day.

The Sharing Game

Participants were asked to play a within-subjects, multi-trial modification on the Dictator game design used in previous studies to assess paranoia^{35,36}, hereafter called 'The Sharing Game' (Fig. 1). In the game, participants played six trials against three different types of partner who are assigned the role of Dictator. In each trial, participants were told that they have a total of £0.10 and their partner (the Dictator) had the choice to take half (£0.05) or all (£0.10) the money from the participant. Partner policies were one of three types: always take half of the money, have a 50:50 chance to take half or all of the money, or always take all of the money. These policies were labelled as fair, partially fair and unfair, respectively. The order that participants were matched with partners was randomized. Each partner had a corresponding cartoon avatar with a neutral expression to support the notion that each of the six trials was with the same partner.

After each trial, participants were asked to rate on a scale of 1–100 (initialized at 50) to what degree they believed that their partner was motivated (1) by a desire to earn more (self-interest), and (2) by a desire to reduce their bonus in the trial (harmful intent). From the participants perspective, the actions of the partner can be framed as either arising from motivations that concern the gain of value for the partner irrespective of the participant (other-relevant) or arising from motivations that concern the loss of value for the participant (self-relevant).

After making all 36 attributions (two trial attributions for each of the six trials over three partners), participants were put in the role of the Dictator for six trials—whether to make a fair or unfair split of £0.10. Participants were first asked to choose an avatar from nine different cartoon faces before deciding on their six different splits. These Dictator decisions were not used for analysis but were collected to match subsequent participants with decisions from real partners. Participants were paid a baseline payment for their completion, plus any bonus they won from the game.

Analysis

Behavioural data have been previously published³⁵. Here, we apply three computational hypotheses which could explain the data, centred around a Bayesian model³¹ developed to explain mental state inference dynamics during social observation, where recursive, strategic social action is not a process of interest²⁹. We note that previous work showed a Bayesian instantiation of this attributional model outperformed associative model variants³¹. Model 1 allowed separate uncertainties and likelihood weights for each attribution, identical to our prior work³¹; this model demonstrated that trait paranoia increased belief rigidity and self-other inconsistency, and by extension, may serve as a useful assay to test the mechanisms of haloperidol which is theorized to reduce paranoia. In line with general theories of belief updating⁵⁶, Model 2 hypothesized that beliefs would be updating with the same likelihood weight. Model 3 hypothesized that prior beliefs share a single uncertainty free parameter over each distribution, allowing for a simpler hypothesis that prior uncertainties may be represented by a single dimension, giving a more parsimonious account of the data. Descriptions of the parameters within the winning model are in Table 1.

The winning model uses eight parameters that calibrate an agent's initial and ongoing beliefs about others. It encodes the agent's prior expectations of harm, p_{HI_0} , and self-interest, p_{SI_0} , and the certainty of these expectations, u_{pri} . Three parameters implement the agent's internal likelihood of a partner acting with self-interest or harm based on their behaviour, influencing belief updates (w_0 , w_{HI} , w_{SI}). A noise parameter (u_n) indicates the agent's uncertainty over the representation of their partner. The model also includes a belief persistence parameter, η , for agents to either persist with their most recent beliefs or re-set them to the prior expectations (above) upon encountering new partners, with higher values indicating less resetting. See Table 1 for further details.

All computational models were fitted using an HBI algorithm which allows hierarchical parameter estimation while assuming random effects for group and individual model responsibility⁵⁷. This process is shown to be most robust to outliers versus non-hierarchical inference or standard hierarchical inference with fixed effects, and minimizes parameter and model confusion⁵⁷. Parameters were estimated using the HBI in native space drawing from broad priors ($\mu_m = 0$, $\sigma_m = 6.5$; where $m = \{m_1, m_2, m_3\}$). This process was run independently for each drug condition due to the dependency of observations between conditions (the same participants were in each condition). Parameters were transformed into model-relevant space for analysis. All models and hierarchical fitting was implemented in Matlab (Version R2022B). All other analyses were conducted in R (v.4.2.3; x86_64 build) running on Mac OS (Ventura v.13.0). All statistics are reported as: (X , 95% CI: Y , Z), where X is the regression coefficient, and Y and Z are the 95% lower and upper CIs, respectively. All dependent regressors were centred and scaled. To consider the uncertainty of estimates we conducted Bayesian paired sample t -tests to assess individual-level parameter changes. This used JAGS as a backend MCMC sampler⁵⁸; differences in the mean are additionally reported with their corresponding effect sizes (Cohen's d) and posterior 95% HDI. The raw output of this is listed in Supplementary Table 1. Bayesian paired sample t -tests were also used to assess differences between attributional coupling over time. To note, in the original behavioural analysis³⁵ we excluded one extra participant due to their extreme trait psychometric paranoia score (leaving 27 participants); however trait paranoia was not the subject of this analysis, and hierarchical model fitting constrains group behaviour during parameter estimation. Nevertheless, for transparency, we include analytic estimates with the original 27 individual included for comparison. This did not change conclusions (Supplementary Table 2).

We also sought to examine model covariance. Exploratory factor analysis used oblique rotation, including all parameter estimates for each individual within placebo and haloperidol conditions. Optimal factors were determined from observation of the scree plot and

cross-validated model accuracy (Supplementary Fig. 9). Cross-validation used ten folds with three repeats within a logistic general linear model. Parameter loadings and individual factor scores $>|0.4|$ were retained for analysis.

Reporting summary

Further information on research design is available in the Nature Portfolio Reporting Summary linked to this article.

Data availability

All data are freely available online: https://github.com/josephmbarnby/Barnby_et_al_2023_D2D3Modelling (ref. 59).

Code availability

All analysis codes are freely available online: https://github.com/josephmbarnby/Barnby_et_al_2023_D2D3Modelling (ref. 59).

References

- Howes, O. D. & Kapur, S. The dopamine hypothesis of schizophrenia: version III—the final common pathway. *Schizophr. Bull.* **35**, 549–562 (2009).
- Kapur, S. How antipsychotics become anti-‘psychotic’—from dopamine to salience to psychosis. *Trends Pharmacol. Sci.* **25**, 402–406 (2004).
- Kapur, S., Mizrahi, R. & Li, M. From dopamine to salience to psychosis—linking biology, pharmacology and phenomenology of psychosis. *Schizophr. Res.* **79**, 59–68 (2005).
- Howes, O. D. & Murray, R. M. Schizophrenia: an integrated sociodevelopmental-cognitive model. *Lancet* **383**, 1677–1687 (2014).
- Dahoun, T. et al. The relationship between childhood trauma, dopamine release and dexamphetamine-induced positive psychotic symptoms: a [¹¹C]-(+)-PHNO PET study. *Transl. Psychiatry* **9**, 287 (2019).
- Egerton, A. et al. Adversity in childhood linked to elevated striatal dopamine function in adulthood. *Schizophr. Res.* **176**, 171–176 (2016).
- Howes, O. D. et al. Dopamine synthesis capacity before onset of psychosis: a prospective [¹⁸F]-DOPA PET imaging study. *Am. J. Psychiatry* **168**, 1311–1317 (2011).
- Howes, O. et al. Progressive increase in striatal dopamine synthesis capacity as patients develop psychosis: a PET study. *Mol. Psychiatry* **16**, 885–886 (2011).
- Jauhar, S. et al. Determinants of treatment response in first-episode psychosis: an [¹⁸F]-DOPA PET study. *Mol. Psychiatry* **24**, 1502–1512 (2019).
- Laruelle, M. et al. Single photon emission computerized tomography imaging of amphetamine-induced dopamine release in drug-free schizophrenic subjects. *Proc. Natl Acad. Sci. USA* **93**, 9235–9240 (1996).
- Laruelle, M. & Abi-Dargham, A. Dopamine as the wind of the psychotic fire: new evidence from brain imaging studies. *J. Psychopharmacol.* **13**, 358–371 (1999).
- Schneider-Thoma, J. et al. Comparative efficacy and tolerability of 32 oral and long-acting injectable antipsychotics for the maintenance treatment of adults with schizophrenia: a systematic review and network meta-analysis. *Lancet* **399**, 824–836 (2022).
- Hitchcock, P. F., Fried, E. I. & Frank, M. J. Computational psychiatry needs time and context. *Ann. Rev. Psychol.* **73**, 243–270 (2022).
- Huys, Q. J., Maia, T. V. & Frank, M. J. Computational psychiatry as a bridge from neuroscience to clinical applications. *Nat. Neurosci.* **19**, 404–413 (2016).
- Montague, P. R., Dolan, R. J., Friston, K. J. & Dayan, P. Computational psychiatry. *Trends Cogn. Sci.* **16**, 72–80 (2012).

16. Adams, R. A., Stephan, K. E., Brown, H. R., Frith, C. D. & Friston, K. J. The computational anatomy of psychosis. *Front. Psychiatry* **4**, 47 (2013).
17. Ashinoff, B. K., Singletary, N. M., Baker, S. C. & Horga, G. Rethinking delusions: a selective review of delusion research through a computational lens. *Schizophr. Res.* **245**, 23–41 (2022).
18. Diaconescu, A. O., Wellstein, K. V., Kasper, L., Mathys, C. & Stephan, K. E. Hierarchical Bayesian models of social inference for probing persecutory delusional ideation. *J. Abnormal Psychol.* **129**, 556–569 (2020).
19. Hauke, D. J. et al. Aberrant perception of environmental volatility during social learning in emerging psychosis. *Comput. Psychiatry* **8**, 1–22 (2023).
20. Reed, E. J. et al. Paranoia as a deficit in non-social belief updating. *eLife* **9**, e56345 (2020).
21. Mikus, N. et al. Effects of dopamine D2/3 and opioid receptor antagonism on the trade-off between model-based and model-free behaviour in healthy volunteers. *eLife* **11**, e79661 (2022).
22. Freeman, D. Persecutory delusions: a cognitive perspective on understanding and treatment. *Lancet Psychiatry* **3**, 685–692 (2016).
23. Brakoulias, V. & Starcevic, V. A cross-sectional survey of the frequency and characteristics of delusions in acute psychiatric wards. *Australasian Psychiatry* **16**, 87–91 (2008).
24. Raihani, N. J. & Bell, V. An evolutionary perspective on paranoia. *Nat. Hum. Behav.* **3**, 114–121 (2019).
25. Bentall, R. P., Kinderman, P. & Kaney, S. The self, attributional processes and abnormal beliefs: towards a model of persecutory delusions. *Behav. Res. Therapy* **32**, 331–341 (1994).
26. Fonagy, P. & Target, M. Playing with reality: I. Theory of mind and the normal development of psychic reality. *Int. J. Psychoanal.* **77**, 217–233 (1996).
27. Alon, N., Schulz, L., Dayan, P., & Barnby, J. M. Between prudence and paranoia: theory of mind gone right, and wrong. In *First Workshop on Theory of Mind in Communicating Agents* (PMLR, 2023).
28. FeldmanHall, O. & Nassar, M. R. The computational challenge of social learning. *Trends Cogn. Sci.* **25**, 1045–1057 (2021).
29. Barnby, J. M., Dayan, P. & Bell, V. Formalising social representation to explain psychiatric symptoms. *Trends Cogn. Sci.* **27**, 317–332 (2023).
30. Barnby, J. M., Bell, V., Mehta, M. A. & Moutoussis, M. Reduction in social learning and increased policy uncertainty about harmful intent is associated with pre-existing paranoid beliefs: evidence from modelling a modified serial dictator game. *PLoS Comput. Biol.* **16**, e1008372 (2020).
31. Barnby, J. M., Mehta, M. A. & Moutoussis, M. The computational relationship between reinforcement learning, social inference, and paranoia. *PLoS Comput. Biol.* **18**, e1010326 (2022).
32. Adams, R. A., Vincent, P., Benrimoh, D., Friston, K. J. & Parr, T. Everything is connected: inference and attractors in delusions. *Schizophr. Res.* **245**, 5–22 (2022).
33. Nour, M. M. et al. Dopaminergic basis for signaling belief updates, but not surprise, and the link to paranoia. *Proc. Natl Acad. Sci. USA* **115**, E10167–E10176 (2018).
34. Mikus, N. et al. Blocking D2/D3 dopamine receptors increases volatility of beliefs when we learn to trust others. *Nat. Commun.* **14**, 4049 (2022).
35. Barnby, J. M., Bell, V., Deeley, Q. & Mehta, M. A. Dopamine manipulations modulate paranoid social inferences in healthy people. *Transl. Psychiatry* **10**, 214 (2020).
36. Barnby, J. M. et al. Paranoia, sensitization and social inference: findings from two large-scale, multi-round behavioural experiments. *R. Soc. Open Sci.* **7**, 191525 (2020).
37. Cools, R. & D’Esposito, M. Inverted-U-shaped dopamine actions on human working memory and cognitive control. *Biol. Psychiatry* **69**, e113–e125 (2011).
38. Saeedi, H., Remington, G. & Christensen, B. K. Impact of haloperidol, a dopamine D2 antagonist, on cognition and mood. *Schizophr. Res.* **85**, 222–231 (2006).
39. Daw, N. D., Niv, Y. & Dayan, P. Uncertainty-based competition between prefrontal and dorsolateral striatal systems for behavioral control. *Nat. Neurosci.* **8**, 1704–1711 (2005).
40. Andersen, S. M. & Chen, S. The relational self: an interpersonal social-cognitive theory. *Psychol. Rev.* **109**, 619–645 (2002).
41. Barnby, J. M., Raihani, N. & Dayan, P. Knowing me, knowing you: interpersonal similarity improves predictive accuracy and reduces attributions of harmful intent. *Cognition* **225**, 105098 (2022).
42. Tarantola, T., Kumaran, D., Dayan, P. & De Martino, B. Prior preferences beneficially influence social and non-social learning. *Nat. Commun.* **8**, 817 (2017).
43. Vaessen, T., Hernaus, D., Myin-Germeys, I. & van Amelsvoort, T. The dopaminergic response to acute stress in health and psychopathology: a systematic review. *Neurosci. Biobehav. Rev.* **56**, 241–251 (2015).
44. Nicolle, A. et al. An agent independent axis for executed and modeled choice in medial prefrontal cortex. *Neuron* **75**, 1114–1121 (2012).
45. Devaine, M., Hollard, G. & Daunizeau, J. Theory of mind: did evolution fool us? *PLoS ONE* **9**, e87619 (2014).
46. Guennouni, I. & Speekenbrink, M. Transfer of learned opponent models in zero sum games. *Comput. Brain Behav.* **5**, 326–342 (2022).
47. de Weerd, H., Diepgrond, D. & Verbrugge, R. Estimating the use of higher-order theory of mind using computational agents. *B. E. J. Theor. Econ.* **18**, 54 (2018).
48. Goodie, A. S., Doshi, P. & Young, D. L. Levels of theory-of-mind reasoning in competitive games. *J. Behav. Decis. Mak.* **25**, 95–108 (2012).
49. Sharp, C. in *Handbook of Borderline Personality Disorder in Children and Adolescents* 211–225 (Springer, 2014).
50. Fonagy, P. & Bateman, A. W. Mechanisms of change in mentalization-based treatment of BPD. *J. Clin. Psychol.* **62**, 411–430 (2006).
51. Cox, J. & Witten, I. B. Striatal circuits for reward learning and decision-making. *Nat. Rev. Neurosci.* **20**, 482–494 (2019).
52. Rutledge, R. B., Skandali, N., Dayan, P. & Dolan, R. J. Dopaminergic modulation of decision making and subjective well-being. *J. Neurosci.* **35**, 9811–9822 (2015).
53. Oroz Artigas, S. et al. Enhancement in dopamine reduces generous behaviour in women. *PLoS ONE* **14**, e0226893 (2019).
54. Nord, C. L. et al. Neural effects of antidepressant medication and psychological treatments: a quantitative synthesis across three meta-analyses. *Brit. J. Psychiatry* **219**, 546–550 (2021).
55. Seeman, M. V. The pharmacodynamics of antipsychotic drugs in women and men. *Front. Psychiatry* **12**, 468 (2021).
56. Erdmann, T. & Mathys, C. A generative framework for the study of delusions. *Schizophr. Res.* **245**, 42–49 (2022).
57. Piray, P., Dezfouli, A., Heskies, T., Frank, M. J. & Daw, N. D. Hierarchical Bayesian inference for concurrent model fitting and comparison for group studies. *PLoS Comput. Biol.* **15**, e1007043 (2019).
58. Bååth, R. Bayesian first aid: a package that implements Bayesian alternatives to the classical *test functions in R. In *Proc. Use R! 2014—The International R User Conference* (UCLA, 2014).
59. josephmbarnby/Barnby_et al_2023_D2D3Modelling. [GitHub](https://github.com/josephmbarnby/Barnby_et al_2023_D2D3Modelling) https://github.com/josephmbarnby/Barnby_et al_2023_D2D3Modelling (2024).

Acknowledgements

We would like to thank U. Hertz who allowed us to use his graphical avatar illustrations for the Sharing Game. J.M.B. was supported by the UK Medical Research Council (grant no. MR/N013700/1) and King's College London member of the MRC Doctoral Training Partnership in Biomedical Sciences for this work.

Author contributions

J.M.B. acquired funding (equally with M.A.M., Q.D. and V.B.), worked on the software, and performed the investigations, project administration, data visualization and curation. J.M.B. led the conceptualization of the work (with assistance from M.A.M. and M.M.) and the formal analysis (with assistance from M.M.). J.M.B. prepared the original draft, which was reviewed and edited by all authors. V.B. performed data validation. M.A.M. and M.M. supervised the work.

Competing interests

The authors declare no competing interests.

Additional information

Supplementary information The online version contains supplementary material available at <https://doi.org/10.1038/s44220-024-00220-6>.

Correspondence and requests for materials should be addressed to J. M. Barnby.

Peer review information *Nature Mental Health* thanks Florian Schlagenhaut, Bianca Schuster and the other, anonymous reviewer(s) for their contribution to the peer review of this work.

Reprints and permissions information is available at www.nature.com/reprints.

Publisher's note Springer Nature remains neutral with regard to jurisdictional claims in published maps and institutional affiliations.

Open Access This article is licensed under a Creative Commons Attribution 4.0 International License, which permits use, sharing, adaptation, distribution and reproduction in any medium or format, as long as you give appropriate credit to the original author(s) and the source, provide a link to the Creative Commons licence, and indicate if changes were made. The images or other third party material in this article are included in the article's Creative Commons licence, unless indicated otherwise in a credit line to the material. If material is not included in the article's Creative Commons licence and your intended use is not permitted by statutory regulation or exceeds the permitted use, you will need to obtain permission directly from the copyright holder. To view a copy of this licence, visit <http://creativecommons.org/licenses/by/4.0/>.

© The Author(s) 2024

Reporting Summary

Nature Portfolio wishes to improve the reproducibility of the work that we publish. This form provides structure for consistency and transparency in reporting. For further information on Nature Portfolio policies, see our [Editorial Policies](#) and the [Editorial Policy Checklist](#).

Please do not complete any field with "not applicable" or n/a. Refer to the help text for what text to use if an item is not relevant to your study. For [final submission](#): please carefully check your responses for accuracy; you will not be able to make changes later.

Statistics

For all statistical analyses, confirm that the following items are present in the figure legend, table legend, main text, or Methods section.

n/a Confirmed

- The exact sample size (n) for each experimental group/condition, given as a discrete number and unit of measurement
- A statement on whether measurements were taken from distinct samples or whether the same sample was measured repeatedly
- The statistical test(s) used AND whether they are one- or two-sided
Only common tests should be described solely by name; describe more complex techniques in the Methods section.
- A description of all covariates tested
- A description of any assumptions or corrections, such as tests of normality and adjustment for multiple comparisons
- A full description of the statistical parameters including central tendency (e.g. means) or other basic estimates (e.g. regression coefficient) AND variation (e.g. standard deviation) or associated estimates of uncertainty (e.g. confidence intervals)
- For null hypothesis testing, the test statistic (e.g. F , t , r) with confidence intervals, effect sizes, degrees of freedom and P value noted
Give P values as exact values whenever suitable.
- For Bayesian analysis, information on the choice of priors and Markov chain Monte Carlo settings
- For hierarchical and complex designs, identification of the appropriate level for tests and full reporting of outcomes
- Estimates of effect sizes (e.g. Cohen's d , Pearson's r), indicating how they were calculated

Our web collection on [statistics for biologists](#) contains articles on many of the points above.

Software and code

Policy information about [availability of computer code](#)

Data collection

Data analysis

For manuscripts utilizing custom algorithms or software that are central to the research but not yet described in published literature, software must be made available to editors and reviewers. We strongly encourage code deposition in a community repository (e.g. GitHub). See the Nature Portfolio [guidelines for submitting code & software](#) for further information.

Data

Policy information about [availability of data](#)

All manuscripts must include a [data availability statement](#). This statement should provide the following information, where applicable:

- Accession codes, unique identifiers, or web links for publicly available datasets
- A description of any restrictions on data availability
- For clinical datasets or third party data, please ensure that the statement adheres to our [policy](#)

All data collected is freely available on GitHub: https://github.com/josephmbarnby/Barnby_etal_2023_D2D3Modelling/Data

Research involving human participants, their data, or biological material

Policy information about studies with [human participants or human data](#). See also policy information about [sex, gender \(identity/presentation\), and sexual orientation](#) and [race, ethnicity and racism](#).

Reporting on sex and gender

Only men were recruited for this study due to potential pharmacodynamic interactions between Haloperidol and birth control medication. This is discussed in the manuscript.

Reporting on race, ethnicity, or other socially relevant groupings

We don't report on race, ethnicity, or social relevant groupings for analysis.

Population characteristics

We do not report on population characteristics in this manuscript.

Recruitment

We recruited 86 participants by convenience sampling. 28 were included for analysis following screening.

Ethics oversight

The study was approved by KCL ethics board (HR-16/17-0603)

Note that full information on the approval of the study protocol must also be provided in the manuscript.

Field-specific reporting

Please select the one below that is the best fit for your research. If you are not sure, read the appropriate sections before making your selection.

Life sciences

Behavioural & social sciences

Ecological, evolutionary & environmental sciences

For a reference copy of the document with all sections, see nature.com/documents/nr-reporting-summary-flat.pdf

Life sciences study design

All studies must disclose on these points even when the disclosure is negative.

Sample size

n=35

Data exclusions

n=2 excluded for non completion of experimental days. n=5 excluded for failing medical screening.

Replication

Participants completed three experimental days each

Randomization

Participants were randomised using a Williams Square design.

Blinding

The study used a double blind procedure (experimenter & participant blinded to drug).

Behavioural & social sciences study design

All studies must disclose on these points even when the disclosure is negative.

Study description

Research sample

Sampling strategy

Data collection

Timing

Data exclusions

Non-participation

Randomization

Ecological, evolutionary & environmental sciences study design

All studies must disclose on these points even when the disclosure is negative.

Study description	<input type="text"/>
Research sample	<input type="text"/>
Sampling strategy	<input type="text"/>
Data collection	<input type="text"/>
Timing and spatial scale	<input type="text"/>
Data exclusions	<input type="text"/>
Reproducibility	<input type="text"/>
Randomization	<input type="text"/>
Blinding	<input type="text"/>

Did the study involve field work? Yes No

Field work, collection and transport

Field conditions	<input type="text"/>
Location	<input type="text"/>
Access & import/export	<input type="text"/>
Disturbance	<input type="text"/>

Reporting for specific materials, systems and methods

We require information from authors about some types of materials, experimental systems and methods used in many studies. Here, indicate whether each material, system or method listed is relevant to your study. If you are not sure if a list item applies to your research, read the appropriate section before selecting a response.

Materials & experimental systems

- | n/a | Involvement in the study |
|-------------------------------------|--|
| <input checked="" type="checkbox"/> | <input type="checkbox"/> Antibodies |
| <input checked="" type="checkbox"/> | <input type="checkbox"/> Eukaryotic cell lines |
| <input checked="" type="checkbox"/> | <input type="checkbox"/> Palaeontology and archaeology |
| <input checked="" type="checkbox"/> | <input type="checkbox"/> Animals and other organisms |
| <input checked="" type="checkbox"/> | <input type="checkbox"/> Clinical data |
| <input checked="" type="checkbox"/> | <input type="checkbox"/> Dual use research of concern |
| <input checked="" type="checkbox"/> | <input type="checkbox"/> Plants |

Methods

- | n/a | Involvement in the study |
|-------------------------------------|---|
| <input checked="" type="checkbox"/> | <input type="checkbox"/> ChIP-seq |
| <input checked="" type="checkbox"/> | <input type="checkbox"/> Flow cytometry |
| <input checked="" type="checkbox"/> | <input type="checkbox"/> MRI-based neuroimaging |

Antibodies

Antibodies used	<input type="text"/>
Validation	<input type="text"/>

Eukaryotic cell lines

Policy information about [cell lines and Sex and Gender in Research](#)

Cell line source(s)	<input type="text"/>
Authentication	<input type="text"/>
Mycoplasma contamination	<input type="text"/>
Commonly misidentified lines (See ICLAC register)	<input type="text"/>

Palaeontology and Archaeology

Specimen provenance	<input type="text"/>
Specimen deposition	<input type="text"/>
Dating methods	<input type="text"/>
<input type="checkbox"/> Tick this box to confirm that the raw and calibrated dates are available in the paper or in Supplementary Information.	
Ethics oversight	<input type="text"/>

Note that full information on the approval of the study protocol must also be provided in the manuscript.

Animals and other research organisms

Policy information about [studies involving animals](#); [ARRIVE guidelines](#) recommended for reporting animal research, and [Sex and Gender in Research](#)

Laboratory animals	<input type="text"/>
Wild animals	<input type="text"/>
Reporting on sex	<input type="text"/>
Field-collected samples	<input type="text"/>
Ethics oversight	<input type="text"/>

Note that full information on the approval of the study protocol must also be provided in the manuscript.

Clinical data

Policy information about [clinical studies](#)

All manuscripts should comply with the ICMJE [guidelines for publication of clinical research](#) and a completed [CONSORT checklist](#) must be included with all submissions.

Clinical trial registration	<input type="text"/>
Study protocol	<input type="text"/>
Data collection	<input type="text"/>
Outcomes	<input type="text"/>

Dual use research of concern

Policy information about [dual use research of concern](#)

Hazards

Could the accidental, deliberate or reckless misuse of agents or technologies generated in the work, or the application of information presented in the manuscript, pose a threat to:

- | No | Yes |
|--------------------------|---|
| <input type="checkbox"/> | <input type="checkbox"/> Public health |
| <input type="checkbox"/> | <input type="checkbox"/> National security |
| <input type="checkbox"/> | <input type="checkbox"/> Crops and/or livestock |
| <input type="checkbox"/> | <input type="checkbox"/> Ecosystems |
| <input type="checkbox"/> | <input type="checkbox"/> Any other significant area |

Experiments of concern

Does the work involve any of these experiments of concern:

- | No | Yes |
|--------------------------|--|
| <input type="checkbox"/> | <input type="checkbox"/> Demonstrate how to render a vaccine ineffective |
| <input type="checkbox"/> | <input type="checkbox"/> Confer resistance to therapeutically useful antibiotics or antiviral agents |
| <input type="checkbox"/> | <input type="checkbox"/> Enhance the virulence of a pathogen or render a nonpathogen virulent |
| <input type="checkbox"/> | <input type="checkbox"/> Increase transmissibility of a pathogen |
| <input type="checkbox"/> | <input type="checkbox"/> Alter the host range of a pathogen |
| <input type="checkbox"/> | <input type="checkbox"/> Enable evasion of diagnostic/detection modalities |
| <input type="checkbox"/> | <input type="checkbox"/> Enable the weaponization of a biological agent or toxin |
| <input type="checkbox"/> | <input type="checkbox"/> Any other potentially harmful combination of experiments and agents |

Plants

Seed stocks

Novel plant genotypes

Authentication

ChIP-seq

Data deposition

- Confirm that both raw and final processed data have been deposited in a public database such as [GEO](#).
- Confirm that you have deposited or provided access to graph files (e.g. BED files) for the called peaks.

Data access links

May remain private before publication.

Files in database submission

Genome browser session

(e.g. [UCSC](#))

Methodology

Replicates

Sequencing depth

Antibodies

Peak calling parameters

Data quality

Software

Flow Cytometry

Plots

Confirm that:

- The axis labels state the marker and fluorochrome used (e.g. CD4-FITC).
- The axis scales are clearly visible. Include numbers along axes only for bottom left plot of group (a 'group' is an analysis of identical markers).
- All plots are contour plots with outliers or pseudocolor plots.
- A numerical value for number of cells or percentage (with statistics) is provided.

Methodology

Sample preparation

Instrument

Software

Cell population abundance

Gating strategy

- Tick this box to confirm that a figure exemplifying the gating strategy is provided in the Supplementary Information.

Magnetic resonance imaging

Experimental design

Design type

Design specifications

Behavioral performance measures

Imaging type(s)

Field strength

Sequence & imaging parameters

Area of acquisition

Diffusion MRI

Used

Not used

Preprocessing

Preprocessing software

Normalization

Normalization template

Noise and artifact removal

Volume censoring

Statistical modeling & inference

Model type and settings

Effect(s) tested

Specify type of analysis: Whole brain ROI-based Both

Statistic type for inference

(See [Eklund et al. 2016](#))

Correction

Models & analysis

n/a | Involved in the study

 Functional and/or effective connectivity Graph analysis Multivariate modeling or predictive analysis

Functional and/or effective connectivity

Graph analysis

Multivariate modeling and predictive analysis

