
This is the **accepted version** of the journal article:

Guerin, Émilie; Cambray, Guillaume; Sánchez Alberola, Neus; [et al.]. «The SOS response controls integron recombination». *Science*, Vol. 324, issue 5930 (May 2009), p. 1034. DOI 10.1126/science.1172914

This version is available at <https://ddd.uab.cat/record/288366>

under the terms of the  **CC BY** COPYRIGHT license

The SOS response controls integron recombination

Émilie Guerin^{1*}, Guillaume Cambray^{2*}, Neus Sanchez-Alberola^{3*}, Susana Campoy³, Ivan Erill⁴, Sandra Da Re¹, Bruno Gonzalez-Zorn⁵, Jordi Barbé³, Marie-Cécile Ploy¹, Didier Mazel²

¹ Univ. Limoges, Faculté de Médecine, EA3175 ; INSERM, Equipe Avenir, Limoges, France

² Institut Pasteur, Plasticité du Génome Bactérien, CNRS URA 2171, Paris, France

³ Departament de Genètica i Microbiologia, Universitat Autònoma de Barcelona, Spain

⁴ Biomedical Applications Group, Centro Nacional de Microelectrónica (CNM-IMB, CSIC), Barcelona, Spain.

⁵ Departamento de Sanidad Animal, Facultad de Veterinaria, Universidad Complutense de Madrid, Spain.

*: These authors contributed equally to this work.

ABSTRACT

Integrations are found in the genome of hundreds of environmental bacteria but are mainly known for their role in the capture and spread of antibiotic resistance determinants among Gram-negative pathogens. We report a direct link between this system and the ubiquitous SOS response. We found that LexA controlled expression of most integrase genes and consequently regulated cassette recombination. This regulatory coupling enhanced the potential for cassette swapping and capture in cells under stress, while minimizing cassette rearrangements or loss in constant environments. This finding exposes integrations as integrated adaptive systems and has implications for antibiotic treatment policies.

Integrations are bacterial genetic elements capable of incorporating and expressing promoterless genes structured as cassettes (1). Two subsets of integrations have been described: mobile (or resistance) integrations (MIs), which are located in transposons and contain two to eight cassettes encoding resistance to a broad spectrum of antibiotics, and chromosomal integrations (CIs), which are ancient sedentary elements that may contain hundreds of gene cassettes of mostly unknown function. Several lines of evidence indicate that MIs and their cassettes were derived from CIs (1). All integrations contain an integrase gene (*intI*) that mediates the integration of exogenous gene cassettes at the *attI* site and random excision or rearrangement of resident gene cassettes (fig. S1). Despite the importance of integrations in the acquisition and spread of antibiotic resistance determinants, little is known about the dynamics and regulatory control of cassette recombination.

To address this issue, we aligned the upstream region of several CI and MI integrase genes and identified a conserved LexA-binding motif overlapping the putative promoter

regions (2) (Fig. 1A). LexA is the transcriptional repressor governing the SOS response, a widespread regulatory network aimed at addressing DNA damage by repairing or bypassing lesions (3). Derepression of SOS genes results from the autocatalytic cleavage of LexA, a process induced by single-stranded DNA and mediated by RecA. The SOS response has strong links with bacterial adaptation and has been implicated in clinically relevant phenotypes, such as dissemination of virulence factors.

We assessed the functionality of the identified *Vibrio cholerae* LexA-binding site in vitro and found that purified *V. cholerae* LexA specifically bound the identified motif, whereas changes in key site positions prevented this interaction (fig. S2). We analyzed the integrase expression in both the CI of *V. cholerae* and a class 1 MI of *Escherichia coli*. Induction of the SOS response increased the expression of a β -galactosidase reporter of integrase transcription by 4.5-fold in *E. coli* and 37-fold in *V. cholerae*. No induction was observed when either LexA or RecA was impaired or when the LexA boxes were inactivated (Fig. 1, B and C). To verify that the induction of integrase expression results in functional cassette recombination, we measured the frequency of cassette excision. For the class 1 MI and *V. cholerae* CI, the excision rates increased by 141-fold and 340-fold, respectively, upon SOS induction (Fig. 1, B and C). All together, these results demonstrate that the regulation of these integrase genes is strictly dependent on the SOS response and that SOS induction controls the rates of cassette recombination.

In integrons, newly acquired cassettes are highly expressed by the *Pc* promoter, but they can be silenced by untimely recombination events that displace the cassettes to distal positions (4). Recombination can also activate silenced cassettes or retrieve new cassettes from surrounding bacterial communities (1). Under normal conditions, SOS repression of *intI* maintains integron cassette arrays in a steady state. The SOS response can be induced

by several stresses (5), thus ensuring that the reordering of existing cassettes and the acquisition of exogenous cassettes occur under conditions when innovations are needed. In this respect, it is worth noting that antibiotics known to induce the SOS response, such as trimethoprim, quinolones, and β -lactams, promote integrase expression (Fig. 1, B and C).

Current policies in the fight against antibiotic resistance rely on the assumption that resistance mechanisms are costly to the bacteria that host them, which thus gives these bacteria a selective disadvantage and leads to their loss in the absence of antibiotic exposure (6). However, the incorporation of responsive regulation in integrons indicates that antibiotic resistance genes can be silenced at no biological cost until needed, while other adaptive traits continue to be expressed. This being so, there may be little selection acting on MIs, and antibiotic resistance may persist in bacterial populations. Future antibiotic restriction guidelines should take this phenomenon into account.

1. D. Mazel, *Nat Rev Microbiol* **4**, 608 (2006).
2. C. M. Collis, R. M. Hall, *Antimicrob Agents Chemother* **39**, 155 (1995).
3. I. Erill, S. Campoy, J. Barbe, *FEMS Microbiol Rev* **31**, 637 (2007).
4. A. Aertsen, C. W. Michiels, *Trends In Microbiology* **14**, 421 (2006).
5. A. C. Fluit, F. J. Schmitz, *Clin Microbiol Infect* **10**, 272 (2004).
6. D. I. Andersson, *Curr Opin Microbiol* **9**, 461 (2006).

ACKNOWLEDGEMENTS

M.-C.P. acknowledges support by grants from the Ministère de l'Enseignement Supérieur et de la Recherche, the Conseil Régional du Limousin, the Fondation pour la Recherche Médicale (FRM), and Institut National de la Santé et de la Recherche Médicale; D.M. from the Institut Pasteur, the Centre National de la Recherche Scientifique, the FRM, and the European Union (STREP CRAB, LSHM-CT-2005-019023); J.B. from the Spanish Ministerio de Ciencia e Innovación (MICINN) (BFU2008-01078/BMC) and the Catalunya Generalitat (2005SGR-533); and B.G.Z. from the MICINN (GEN2006-27767-E/PAT) and European Union (MED-VET-NET and FOOD-CT-2004-506122). The GenBank accessions for the sequences shown in Fig. 1 are AF055586 (Vch CI), AY014398 (Vme CI), AY014399

(Vpa CI), AY181034 (Vna CI), AF034958 (cl1-MI), AJ001816 (cl2-MI), AB070224 (cl3-MI), and AJ277063 (cl5-MI).

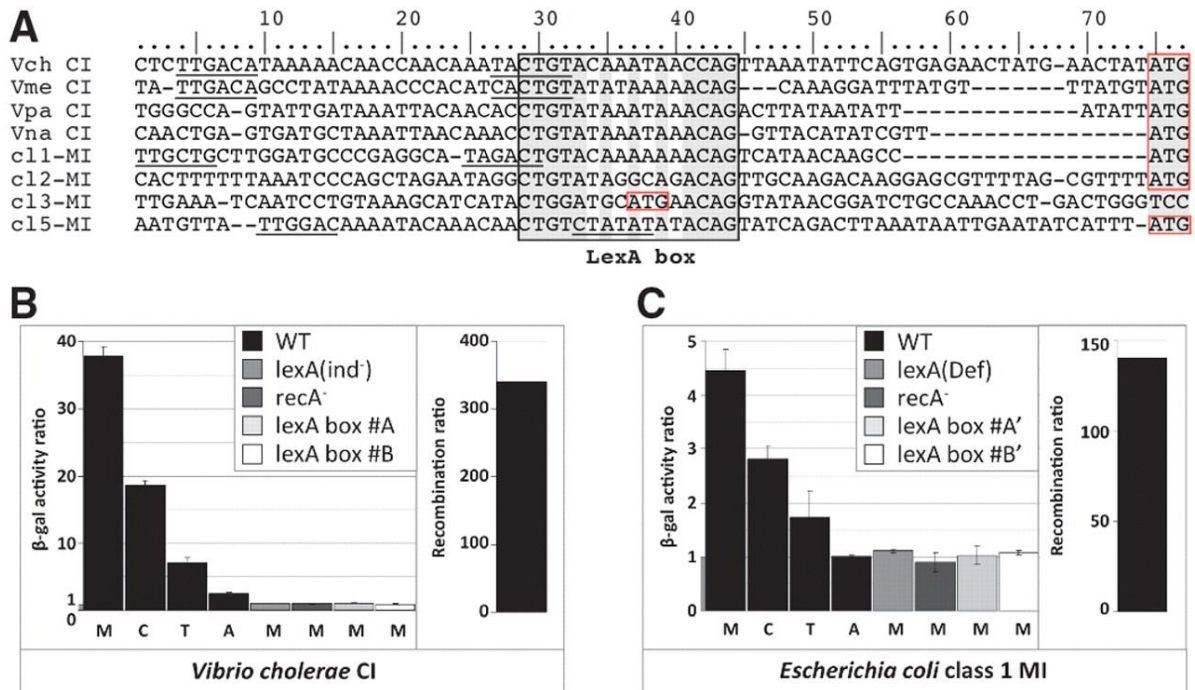


Figure 1 – Schematic organization of integrons (A). The functional platform of integrons is constituted by an *intI* gene encoding an integrase, a cassette promoter P_c and a primary recombination site $attI$. Only the few first cassettes are expressed by the P_c , a feature represented by the fading filling color. The rest of the array can be seen as a reservoir of standing genetic variation. P_{int} , integrase promoter. Alignment of the promoter regions of *intI* genes from the CI of *Vibrio cholerae* (Vch), *V. metschnikovii* (Vme), *V. parahaemolyticus* (Vpa), *V. natriegens* (Vna) and from class 1 MI (Eco MI-1), from class 2 MI (Pst MI-2), class 3 MI (Sma MI-3) and class 5 MI (Asa MI-5) (B). Putative LexA-binding sequences are boxed, while putative $\sigma 70$ promoter elements (-35 and -10) are underlined and the translation start site of *intI* is boxed in red. *intI* expression and cassette recombination inductions in *V. cholerae* CI and in the *E. coli* pAT674 class 1 MI, (C and D, respectively). Mitomycin (M), ciprofloxacin (C), trimethoprim (T) and ampicilin (A) were used to induce the SOS response in a WT background and validation of the induction was further assessed in several SOS defective mutant backgrounds. Mutants are specified in the insets. The LexA box mutants correspond to substitution of the canonical site known to abolish LexA binding (see supplementary material). *lexA(ind-)*, non inducible LexA derivative, *lexA(Def)*, inactive LexA mutant.