






Whole-genome SNP genotyping unveils ancestral and recent introgression in wild and domestic goats

Neža Pogorevc^{1,2}  | Arsen Dotsev³ | Maulik Upadhyay² | Edson Sandoval-Castellanos² | Elisabeth Hannemann² | Mojca Simčič¹ | Aglaia Antoniou⁴  | Dimitris Papachristou⁵ | Panagiota Koutsouli⁵ | Siham Rahmatalla⁶ | Gudrun Brockmann⁶ | Johann Sölkner⁷ | Pamela Burger⁸  | Petros Lymberakis⁹ | Nikos Poulakakis^{9,10,11}  | Iosif Bizelis⁵ | Natalia Zinovieva³ | Simon Horvat¹ | Ivica Medugorac² 

¹Department of Animal Science, Biotechnical Faculty, University of Ljubljana, Ljubljana, Slovenia

²Population Genomics Group, Department of Veterinary Sciences, Faculty of Veterinary Medicine, Ludwig-Maximilians-University of Munich, Martinsried/Planegg, Germany

³L.K. Ernst Federal Research Center for Animal Husbandry, Podolsk, Russia

⁴Institute of Marine Biology, Biotechnology and Aquaculture (IMBBC), Hellenic Centre for Marine Research (HCMR), Crete, Greece

⁵Laboratory of Animal Breeding and Husbandry, Department of Animal Science, School of Animal Biosciences, Agricultural University of Athens, Athens, Greece

⁶Albrecht Daniel Thaer-Institute for Agricultural and Horticultural Sciences, Animal Breeding and Molecular Genetics, Humboldt-Universität zu Berlin, Berlin, Germany

⁷Division of Livestock Sciences, Department of Sustainable Agricultural Systems, University of Natural Resources and Life Sciences, Vienna, Austria

⁸Department of Interdisciplinary Life Sciences, Research Institute of Wildlife Ecology, Vetmeduni Vienna, Vienna, Austria

⁹Natural History Museum of Crete, School of Sciences and Engineering, University of Crete, Irakleio, Greece

¹⁰Biology Department, School of Sciences and Engineering, University of Crete, Irakleio, Greece

¹¹Institute of Molecular Biology and Biotechnology (IMBB), Foundation for Research and Technology - Hellas (FORTH), Irakleio, Greece

Correspondence

Ivica Medugorac, Population Genomics Group, Department of Veterinary Sciences, Faculty of Veterinary Medicine, Ludwig-Maximilians-University of Munich, Lena-Christ-Straße 48, Martinsried/Planegg 82152, Germany.
Email: ivica.medjugorac@gen.vetmed.uni-muenchen.de

Funding information

Deutscher Akademischer Austauschdienst, Grant/Award Number: BI-DE/20-21-003, ID-57418683 and ID-57514909; Javna Agencija za Raziskovalno Dejavnost RS, Grant/Award Number: J4-1768 and P4-0220; Ministry of Science and Higher Education of the Russian Federation, Grant/Award Number: 075-15-2021-1037

Abstract

After the domestication of goats around 10,000 years before the present (BP), humans transported goats far beyond the range of their wild ancestor, the bezoar goat. This brought domestic goats into contact with many wild goat species such as ibex and markhor, enabling introgression between domestic and wild goats. To investigate this, while shedding light on the taxonomic status of wild and domestic goats, we analysed genome-wide SNP data of 613 specimens from 14 taxonomic units, including *Capra hircus*, *C. pyrenaica*, *C. ibex* (from Switzerland, Austria, Germany and Slovenia), *C. aegagrus aegagrus*, *C. a. cretica*, *C. h. dorcas*, *C. caucasica caucasica*, *C. c. severtzovi*, *C. c. cylindricornis*, *C. falconeri*, *C. sibirica sibirica*, *C. s. alaiana* and *C. nubiana*, as well as *Oreamnos americanus* (mountain goat) as an outgroup. To trace gene flow between domestic and wild goats, we integrated genotype data of local goat breeds from the Alps as well as from countries such as Spain, Greece, Türkiye, Egypt, Sudan, Iran,

This is an open access article under the terms of the [Creative Commons Attribution](https://creativecommons.org/licenses/by/4.0/) License, which permits use, distribution and reproduction in any medium, provided the original work is properly cited.

© 2023 The Authors. *Molecular Ecology* published by John Wiley & Sons Ltd.

Handling Editor: Josephine Pemberton

Russia (Caucasus and Altai) and Pakistan. Our phylogenetic analyses displayed a clear separation between bezoar-type and ibex-type clades with wild goats from the Greek islands of Crete and Youra clustered within domestic goats, confirming their feral origin. Our analyses also revealed gene flow between the lineages of Caucasian tur and domestic goats that most likely occurred before or during early domestication. Within the clade of domestic goats, analyses inferred gene flow between African and Iberian goats. The detected events of introgression were consistent with previous reports and offered interesting insights into the historical relationships among domestic and wild goats.

KEYWORDS

autosomal DNA, *Capra hircus*, *Capra ibex*, D-statistics, evolutionary genomics, phylogeny

1 | INTRODUCTION

The first sedentary societies began domesticating goats (*Capra hircus*) in the Fertile Crescent around 10,500 years before present (BP) (Zeder & Hesse, 2000). Like other livestock species, domestic goats were transported far beyond the range of their wild ancestor, the bezoar goat, whose distribution is restricted to Southwest Asia. In some of the new environments to which domestic goats were introduced, they found other congeneric species, enabling the possibility of gene flow between domestic and wild goats. Gene flow between domestic and wild relatives has been reported in several livestock species (Cao et al., 2021; Chen et al., 2018; Cubric-Curik et al., 2021; Medugorac et al., 2017), and goats are not an exception. Domestic goats have been shown to carry signatures of interbreeding with both Alpine and Iberian ibexes (Alasaad et al., 2012; Cardoso et al., 2021; Giacometti et al., 2004; Grossen et al., 2014), and with markhor (Hammer et al., 2008; Li et al., 2022). Interbreeding among ancestral caprine lineages may also have occurred (Daly et al., 2022), but such reports are isolated, and the taxonomic status of some species is still under review. Therefore, it is essential to update the phylogenetic and taxonomic state of knowledge of the genus *Capra*.

The genus *Capra* consists of at least eight recognized species, which are spread in mountainous habitats of Africa, Asia and Europe. They are divided into three clades: true goats, markhors and ibexes (Groves & Grubb, 2011). True goats include domestic (*C. hircus*) and bezoar goats (*C. aegagrus*). Bezoar goats are discontinuously distributed in Southwest Asia in regions such as Pakistan, Iran, Turkmenistan and the Caucasus. They are listed as vulnerable and have gone extinct in several countries (Rahim, 2016). Bezoar goats have two subspecies, *C. a. aegagrus* and *C. a. blythi*. The status of other subspecies, such as those from the Greek islands of Crete and Youra, is still contentious (Masseti, 2009). Markhors (*C. falconeri*) are found in the mountainous regions of Afghanistan, India, Pakistan, Tajikistan, Turkmenistan and Uzbekistan, including the Sulaiman Mountains and the Himalayas. Markhor is listed as near threatened

globally (Michel et al., 2014) and endangered in Pakistan (Ahmad & Nabi, 2022). The third clade of the genus *Capra*, the ibexes, has six recognized species: (1) the Walia ibex (*C. waliae*), which is found only in the Simien Mountains of Ethiopia; (2) the Nubian ibex (*C. nubiana*), whose range stretches along both sides of the Red Sea; (3) the Siberian ibex (*C. sibirica*), which has four subspecies (*C. s. sibirica*, *C. s. alaiana*, *C. s. hagenbecki* and *C. s. sakeen*) that are found in mountain ranges across Central, East and South Asia (Castelló, 2016; Groves & Grubb, 2011); (4) the Caucasian tur (*C. caucasica*), which is endemic to the Greater Caucasus range and has several ecotypes (*C. c. caucasica*, *C. c. cylindricornis* and *C. c. severtzovi*) (Dotsev et al., 2021); (5) the Iberian ibex (*C. pyrenaica*), which is endemic to the Iberian Peninsula; and (6) the Alpine ibex (*C. ibex*), which is endemic to the Alps and has undergone a severe population decline to about 100 individuals that were kept in a reserve and later reintroduced to the Alps (Parrini et al., 2009). The Iberian ibex experienced similar bottlenecks, up to the extinction of two of the four reported subspecies (*C. p. lusitanica* and *C. p. pyrenaica* were extirpated, *C. p. hispanica* and *C. p. victoriae* are still present) (Acevedo & Real, 2011).

The systematics and phylogeny of *Capra* were initially approached by morphological analyses and later by the analysis of mitochondrial DNA (mtDNA) and Y-chromosome markers (Luikart et al., 2001; Manceau et al., 1999; Pidancier et al., 2006; VarGoats Consortium et al., 2022). Unsurprisingly, the maternal and paternal phylogenetic reconstructions disagreed, presumably due to different mutation rates and different pervasiveness of lineage sorting associated with different male and female effective population sizes, different reproductive histories and sex-biased introgression. For the same reasons, the evolutionary histories of the mtDNA and the Y-chromosome are expected to show some differences from those inferred from autosomal variation, but studies analysing whole-genome data across most species and subspecies of the genus *Capra* are not available yet.

In this study, we compiled the most comprehensive SNP dataset of wild and domestic goats to date (Figure 1). Subsequently, we studied their phylogenetic relationships and investigated the patterns of

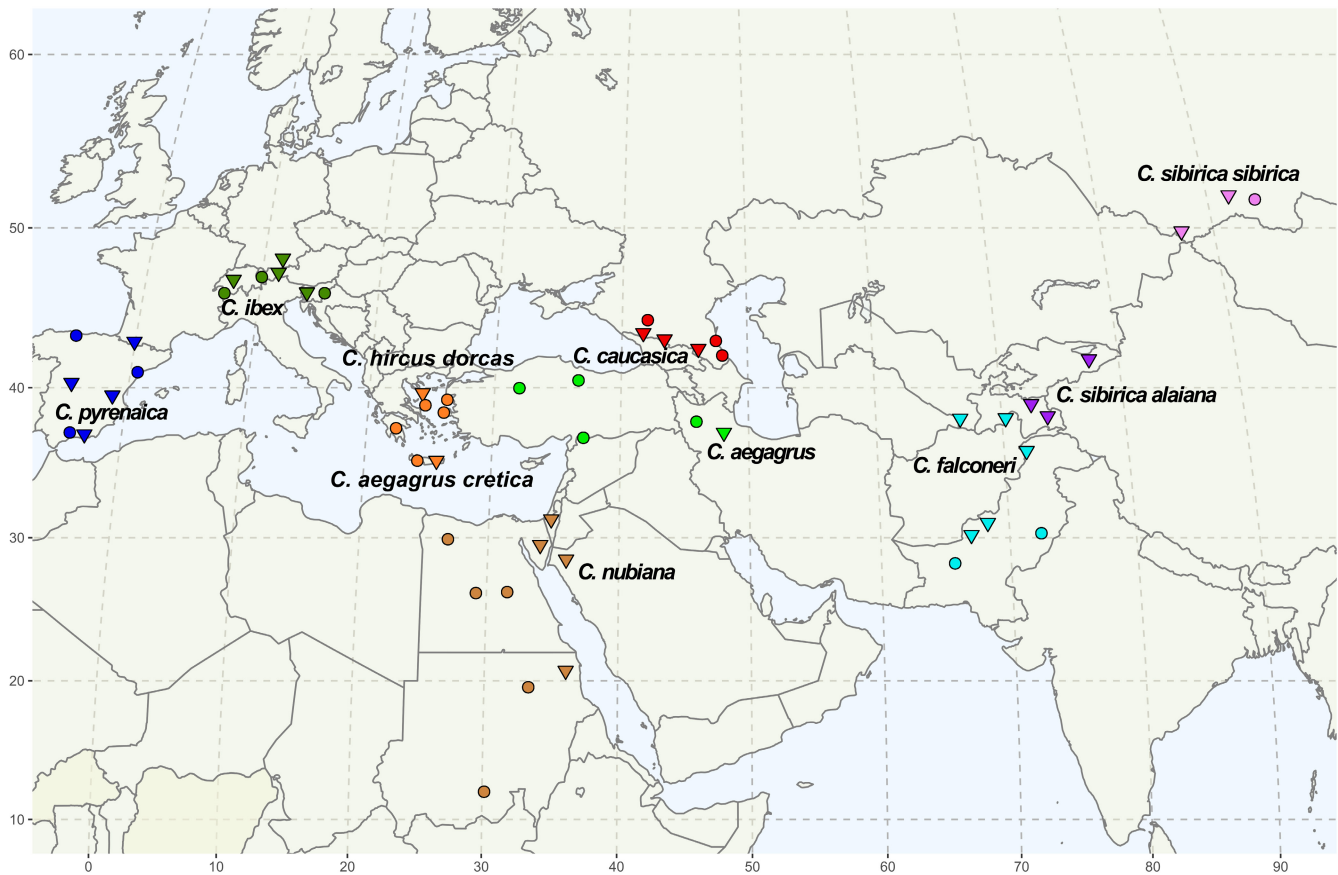


FIGURE 1 Sample origin. The triangles represent wild species (names shown) and the circles represent domestic goats.

gene flow among species, including wild and domestic goats that are sympatric, as well as among domestic goat breeds. Finally, we discussed the causes and consequences of the inferred events of gene flow and the time when they most likely occurred.

2 | MATERIALS AND METHODS

For this study, blood and tissue samples from 173 goat specimens and 4 mountain goats (*Oreamnos americanus*) were collected. The goat specimens included 79 Alpine ibexes, 5 Iberian ibexes, 4 Youra wild goats, 6 Cretan wild goats, 1 Nubian ibex, 2 bezoar wild goats, 14 markhors, 4 Mid-Asian ibexes, 7 Siberian ibexes and 51 domestic goats from different Greek populations (Table S1).

Genomic DNA was extracted using the Omega E.Z.N.A.® Tissue DNA Kit or ReliaPrep™ Blood gDNA Miniprep System (Promega) according to the manufacturer's instructions. Then, we genotyped the collected samples, including mountain goats, using the Illumina Goat SNP50 BeadChip (Tosser-Klopp et al., 2014) and complemented those genotypes with published data from animals that were genotyped with the same SNP chip (Table 1). These published datasets included 15 Caucasian turs, 7 Nubian ibexes (Sudan), 4 Cretan wild goats and 389 domestic goats of different breeds from Russia, Iran, Egypt, Türkiye, Spain, Sudan, Pakistan, Switzerland, Austria and Slovenia (Burren

et al., 2016; Colli et al., 2018; Deniskova et al., 2021; Dotsev et al., 2021; Hassan et al., 2018; Pogorevc et al., 2021; Rahmatalla et al., 2017). Domestic populations were included according to their overlapping or spatial proximity to the ranges of wild goat species. For instance, we used Spanish breeds that were broadly sympatric with Iberian ibex, and Alpine goat breeds that overlapped with Alpine ibex. Furthermore, we downloaded the whole genome sequences of five Iberian ibexes (NCBI accession numbers SAMEA6675493, SAMN10736154, SAMN10736151, SAMN10736152 and SAMN10736153), four Nubian ibexes (NCBI acc. numbers SAMEA6675494, SAMN16674508, SAMN10736155 and SAMN10736156), one markhor (NCBI acc. number SAMEA6675502) and four Mid-Asian ibexes (NCBI acc. numbers SAMN06233877, SAMN10736159, SAMN10736158 and SAMEA6675501) (Chebii et al., 2020; Chen et al., 2019; Denoyelle et al., 2021; Grossen et al., 2020) and extracted the exact set of SNP markers present on the Illumina Goat SNP50 BeadChip after aligning the samples against the latest goat genome assembly, ARS1 (Bickhart et al., 2017). In domestic populations, closely related individuals and outliers that could have been imports from other breeds were excluded (following Pogorevc et al., 2021). Our full dataset contained whole genome SNP data of 613 individuals from 10 species, 8 subspecies and 26 breeds according to the nomenclature of the "Bovids of the world" (Table 1) (Castelló, 2016).

TABLE 1 Sample collection.

Short name	Species/breed	Origin	Scientific name	Nr	Sample source ^c	Genotype source
Mountain goat	Mountain goat	North America	<i>Oreamnos americanus</i>	4	Z	This study
Iberian ibex	Iberian ibex	Spain, France	<i>Capra pyrenaica</i>	10	W	Grossen et al. (2020), Denoyelle et al. (2021)
Alpine ibex	Alpine ibex	Austria, Germany, Slovenia, Switzerland	<i>Capra ibex</i>	79	W, Z	This study
Youra wild	Youra wild goat	Greece	<i>Capra hircus dorcas</i> ^a	4	W	This study
Cretan wild	Cretan wild goat	Greece	<i>Capra aegagrus cretica</i> ^b	10	W, Z	This study, Hassan et al. (2018) ^d
Nubian ibex	Nubian ibex	Egypt, Israel, Saudi Arabia, Sudan	<i>Capra nubiana</i>	12	W, Z	This study, Grossen et al. (2020), Hassan et al. (2018), Denoyelle et al. (2021), Chebii et al. (2020)
E-Caucasian tur	East Caucasian tur	Russia	<i>Capra caucasica cylindricornis</i>	5	W	Dotsev et al. (2021)
M-Caucasian tur	Mid Caucasian tur	Russia	<i>Capra caucasica severtzovi</i>	5	W	Dotsev et al. (2021)
W-Caucasian tur	West Caucasian tur	Russia	<i>Capra caucasica caucasica</i>	5	W	Dotsev et al. (2021)
Bezoar	Bezoar wild goat	Iran	<i>Capra aegagrus aegagrus</i>	9	W	This study, Colli et al. (2018)
Markhor	Markhor	Pakistan, Tajikistan, Uzbekistan	<i>Capra falconeri</i>	15	W	This study, Denoyelle et al. (2021)
M-Asian ibex	Mid-Asian ibex	Kyrgyzstan, Tajikistan	<i>Capra sibirica altaiana</i>	8	W	This study, Grossen et al. (2020), NCBI BioProject PRJNA438286, Denoyelle et al. (2021)
Siberian ibex	Siberian ibex	Kazakhstan, Russia	<i>Capra sibirica sibirica</i>	7	W	This study
Blanca	Blanca de Rasquera	Spain	<i>Capra hircus</i>	10	F	Colli et al. (2018)
Bermeya	Bermeya	Spain	<i>Capra hircus</i>	24	F	Colli et al. (2018)
Malaguena	Malaguena	Spain	<i>Capra hircus</i>	25	F	Colli et al. (2018)
Peacock	Peacock	Switzerland	<i>Capra hircus</i>	11	F	Burten et al. (2016)
Chamois-C	Chamois Coloured	Austria	<i>Capra hircus</i>	10	F	Pogorevc et al. (2021)
Drežnica	Drežnica	Slovenia	<i>Capra hircus</i>	25	F	Pogorevc et al. (2021)
Skyros	Skyros	Greece	<i>Capra hircus</i>	9	F	This study
Chios	Chios	Greece	<i>Capra hircus</i>	10	F	This study
Lesbos	Lesbos	Greece	<i>Capra hircus</i>	12	F	This study
Peloponnese	Peloponnese	Greece	<i>Capra hircus</i>	12	F	This study
Crete	Crete	Greece	<i>Capra hircus</i>	8	F	This study
Ankara	Ankara	Türkiye	<i>Capra hircus</i>	20	F	Colli et al. (2018)
Kil	Kil	Türkiye	<i>Capra hircus</i>	25	F	Colli et al. (2018)
Kilis	Kilis	Türkiye	<i>Capra hircus</i>	25	F	Colli et al. (2018)
Barkı	Barkı	Egypt	<i>Capra hircus</i>	25	F	Colli et al. (2018)
Oasis	Oasis	Egypt	<i>Capra hircus</i>	25	F	Colli et al. (2018)
Saidi	Saidi	Egypt	<i>Capra hircus</i>	25	F	Colli et al. (2018)

TABLE 1 (Continued)

Short name	Species/breed	Origin	Scientific name	Nr	Sample source ^c	Genotype source
Tagg	Taggar	Sudan	<i>Capra hircus</i>	20	F	Hassan et al. (2018)
Nubian	Nubian	Sudan	<i>Capra hircus</i>	21	F	Rahmatalla et al. (2017)
Karachaev	Karachaev	Russia	<i>Capra hircus</i>	19	F	Deniskova et al. (2021)
Dagestan-D	Dagestan downy	Russia	<i>Capra hircus</i>	17	F	Deniskova et al. (2021)
Dagestan-A	Dagestan aboriginal	Russia	<i>Capra hircus</i>	12	F	Deniskova et al. (2021)
Iranian	Iranian	Iran	<i>Capra hircus</i>	9	F	Dotsev et al. (2021)
Soviet-M	Soviet Mohair	Russia	<i>Capra hircus</i>	17	F	Deniskova et al. (2021)
Koh-e-sulmani	Koh-e-sulmani	Pakistan	<i>Capra hircus</i>	12	F	Colli et al. (2018)
Dera-DP	Dera Din Panah	Pakistan	<i>Capra hircus</i>	12	F	Colli et al. (2018)
Total	39		14	613		

Note: Columns show a short name matching figures in the manuscript and Appendix S1, breed or species name, scientific name, country of origin, sample size and sources.

^aAlternative scientific name is *Capra aegagrus dorcas* Reichenow, 1888 (Masseti, 2009).

^bAlternative scientific name is *Capra hircus cretica* Schinz, 1838 (Masseti, 2009).

^cThe origin of the samples: W = wild, Z = ZOO, F = farm.

^dSamples were published Hassan et al. (2018) as bezoar, later we discovered they are Cretan wild goats.

Autosomal SNPs with a call rate greater than 95%, 90% non-missing genotypes per marker and 90% non-missing genotypes per individual were kept. After filtering, 46,170 SNPs were used for further analyses.

We estimated the genomic diversity within individuals by means of the individuals' multilocus heterozygosities (MLH) with the R package *INBREEDR* (Stoffel et al., 2016). For comparison purposes, we calculated the mean MLH values and confidence intervals for each taxa and plotted them with the R package *GGPLOT2* (Gómez-Rubio, 2017).

After estimating genetic variation, we evaluated the genomic similarity of our samples by means of the Reynolds's distances (Reynolds et al., 1983) computed with the R package *ADEGENET* (Jombart & Ahmed, 2011). The distances were used to construct a neighbour-net in the program *SPLITS TREE* v4.18.1 (Huson & Bryant, 2006).

To obtain further insight into the genetic relationships of our samples, we applied a principal component analysis (PCA) based on IBS (identical by state) alleles in the program *PLINK* v1.9 (Purcell et al., 2007) and plotted the resulting PCs in the R platform (R Core Team, 2018). We also analysed coancestry relationships among our samples using the program *ADMIXTURE* v1.3 (Alexander et al., 2009) after finding the optimal number of required groups (K), for which we applied a 20-fold cross-validation procedure ($--cv=20$). For this analysis, we pruned the set of SNPs by excluding 38,017 redundant SNPs that exhibited pairwise linkage disequilibrium scores (r^2) above 0.1 in a window of 50 SNPs ($--indep-pairwise 50 10 0.5$). The pruning was carried out in *PLINK* v1.9 (Purcell et al., 2007) and plots were made in *PONG* (Behr et al., 2016).

To understand the evolutionary relationships among wild and domestic goats, we first inferred a maximum likelihood tree with the program *TREEMIX* v1.13 (Pickrell & Pritchard, 2012). The outgroup was mountain goat (*Oreamnos americanus*), which is endemic to North America and thus, most likely, has no chance of having had introgression with *Capra* species. The support of the nodes was estimated by means of 100 replicates of bootstrapping. We used 35 taxonomic units, considering the genetic affinity of wild populations observed with *ADMIXTURE*, to improve the statistical robustness of this analysis and the following ones. The 35 taxonomic units resulted from merging the two subspecies of Siberian ibex (*C. sibirica sibirica* and *C. s. alaiana*) and the three subspecies of Caucasian tur (*C. caucasica caucasica*, *C. c. cylindricornis* and *C. c. severtzovi*).

To further refine our reconstruction of the evolutionary history of wild and domestic goats, we inferred gene flow events among the 35 taxonomic units used in the phylogenetic reconstruction. We used the maximum likelihood method implemented in *TREEMIX* v1.13 (Pickrell & Pritchard, 2012), which requires setting the number of gene flow events a priori. To resolve this, we performed an initial analysis with $m=1$ event and then performed replicates by adding one event at a time, until the variance explained by relatedness between taxa reached ~99.8% (a threshold suggested by a simulation study of the original paper; Pickrell & Pritchard, 2012). To assess

consistency, we replicated the analysis 10 times with different random seeds. The optimal number of migration edges were obtained and visualized with the R package *OPTM* (Fitak, 2021).

To confirm or disregard the gene flow events inferred with *TREEMIX*, we calculated *D*-statistics (also termed ABBA-BABA statistics). The *D*-statistics employ a scheme with four taxonomic units: two sister taxa (P1 and P2) from which P2 is a candidate for having had gene flow with an external group (P3), and an outgroup (O) that is used to identify ancestral alleles. The *D*-statistics' values range from 0.0 to 1.0, where 0.0 means no gene flow, and their significance is obtained by a block jackknife procedure that yields *Z*-scores. We used the mountain goat (*Oreamnos americanus*) as the outgroup and tested different combinations of taxa in P1, P2 and P3. We also computed *f*-branch statistics (based on the better-known f_4 -statistics) which predict the excess of alleles that are shared between a target taxon and a specific branch in a given species-tree topology. To make better sense of the patterns obtained with *D*-statistics, we classified the analyses according to their compliance with *D*-statistics assumptions, specifically the assumption of lack of gene flow between P1 and P2, the lack of gene flow between P1 and P3 and the symmetrical probability of incomplete lineage sorting in P1 and P2. We plotted the results obtained with the *D*-statistics, f_4 -statistics and *f*-branch statistics with the scripts provided in the program *DSUITE* (Malinsky et al., 2021). To complement the analysis of *D*- and f_4 -statistics, we tested the admixture status of domestic populations with f_3 -statistics using the program *ADMIXTOOLS* v7.0.2 (Patterson et al., 2012).

Finally, we used two approaches to assess the effect of ascertainment bias on the phylogenetic inference using *TREEMIX* and the inference of gene flow with *TREEMIX* and *D*-statistics. The first approach compared results from two panels of SNPs extracted from publicly available 58 whole-genome sequences of wild and domestic goats: (i) SNPs from the Goat 50K array and (ii) the entire set of SNPs. In the second approach, we used simulations to compare the tree topology and the ability of the *TREEMIX* algorithm to retrieve the correct migration edges in the SNP datasets that were created under ascertainment and unascertainment conditions. The simulations produced full sequencing data under a demographic model that incorporated gene flow. They were carried out in the software *ARGON* v0.1 (Palamara, 2016) (refer to Data S1 for more details).

3 | RESULTS

The genetic diversity of domestic goats, measured by the MLH (average=0.388, range=0.221–0.439), contrasted with the values of ibex and tur species (average=0.012, range=0.002–0.040) (Figure S1). The remaining groups, namely markhor, bezoar, as well as Youra and Cretan wild goats had intermediate values (average=0.168, range=0.14–0.33). This apparent separation between true goats and ibexes was congruent with the neighbour-net constructed with Reynolds's distances. In it, ibexes and true goats

appeared in a single cluster each, without any taxa cross-clustered, and markhor, Youra and Cretan wild goats appeared at intermediate positions (Figure S2A).

The separation of ibex species and subspecies was also evident in the PCA (Figure S2B). In the parametric space of PC1 and PC2 (58.09% and 9.83% of the variation, respectively), each species constituted a compact cluster that was well separated from the others, with the sole exception of the domestic goats (*C. hircus*), and the Crete and Youra wild goats, whose clusters overlapped. However, the plot of PC1 and PC3 (5.66% of the variation) partially separated these groups (Figure S2C).

In the *ADMIXTURE* charts (Figure 2a), all tur subspecies (*C. caucasica cylindricornis*, *C. c. severtzovi* and *C. c. caucasica*), the two Siberian subspecies (*C. sibirica sibirica* and *C. s. alaiana*), the Iberian ibex (*C. pyrenaica*) and most individuals of the Alpine ibex (*C. ibex*) showed little to no traces of mixed ancestry. However, some Alpine ibexes shared small amounts of origin with the Iberian ibex and Caucasian tur. Outside the ibex clade, the bezoar showed a highly admixed ancestry. A direct interpretation would be that the bezoar had introgression with a number of wild and domestic goats, as has been reported (Alberto et al., 2018), but a more parsimonious explanation is that this is a byproduct of the bezoar being the ancestor of all domestic goats, whose high intra-group homogeneity and inter-group differentiation, driven by intensive artificial selection and breeding practices, highly influenced the definition of ancestry groups by *ADMIXTURE*. Upon close examination, the six noticeable ancestry groups present in bezoar are prevalent in breeds from Greece, Türkiye, Pakistan, Russia, Egypt, Sudan and in the markhor. The aforementioned populations are sympatric (or nearly sympatric) with bezoar, suggesting a high retention of ancestral genetic variation inherited from bezoar, with the obvious exception of the markhor. This suggests a possible occurrence of introgression, or interbreeding, between bezoar and these populations. Furthermore, our dataset revealed that the three Spanish breeds (Blanca de Rasquera, Bermeya and Malagueña) exhibited genetic admixture between themselves and with goats from Egypt. The Greek populations from Skyros, Chios, Lesbos, Peloponnese and Crete presented a similar set of ancestry groups that can be as well found in the Turkish breeds of Kil, Kilis and Ankara, the most genetically diverse breeds among domestic goats.

Our maximum likelihood phylogenetic tree provided deeper insight into the dichotomous pattern suggested by other analyses (Figure 2b). The topology showed a monophyletic clade containing the ibex and tur species, well separated from the lineage leading to the monophyletic group of domestic goats, in which markhor and bezoar appeared as stem groups. In the ibex-tur clade, the Nubian ibex (*C. nubiana*), the Siberian ibex (*C. sibirica*) and the Caucasian tur (*C. caucasica*) appeared paraphyletic to the Alpine and Iberian ibex (*C. ibex* and *C. pyrenaica*). In the clade of domestic goats, a geographical East–West split pattern emerged: breeds from Pakistan, Iran, Russia, Türkiye, Egypt and Sudan appeared in one clade, and breeds from Greece, Spain, Slovenia, Austria and Switzerland appeared in the sister clade. Interestingly, the Youra and Cretan wild goats

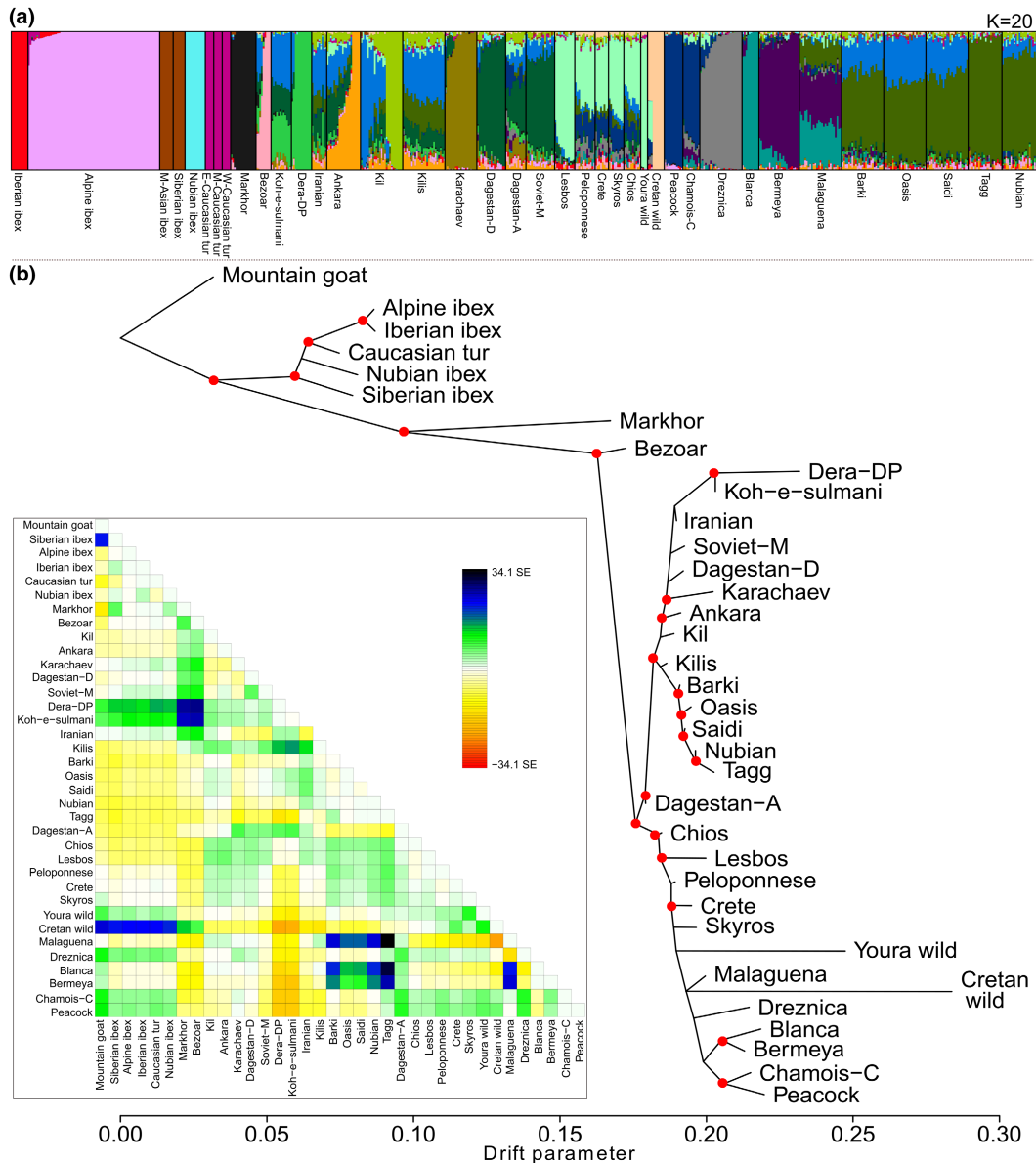


FIGURE 2 Pattern of genome-wide ancestral variation among wild and domestic goats. (a) Colour chart of shared ancestral genomic variation inferred by the *ADMIXTURE* software with an optimum number of inferred groups set to 20 ($K=20$); and (b) maximum-likelihood phylogenetic tree of species and domestic breeds inferred with *TREEMIX*. Nodes indicated with red circles were supported by bootstrap values of at least 93%. In the lower left corner, we also plotted the matrix of residuals from the fit of the model with no migrations. The colour bar next to it represents the degree of relatedness between populations and residuals above zero suggests candidates for admixture events.

appeared next to Greek domestic goat populations and paraphyletic to all other European domestic goats.

The optimal number of gene flow events to estimate with *TREEMIX*, according to the likelihood change in 10 analysis replicates (Fitak, 2021), was four (Figure S3). The first event, which was present in 8 out of 10 replicates, involved gene flow between the ancestor of the Pakistani breeds and bezoar. The second and third events, present in all 10 replicates, involved gene flow between African and Spanish breeds in both directions. The fourth event, present in seven replicates, was an inter-generic cross between mountain goats and the ancestral node of most domestic goats in the Western European clade, along with wild goats from Youra and Creta.

The analysis by *D*-statistics (Figure 3; Figures S4 and S5, Tables S2 and S3) and f_4 -ratios (Figure 4) detected three sets of comparisons that consistently yielded significant Z-scores (at $\alpha=.01$). One involved Caucasian tur and taxa of the bezoar-type clade (domestic goats, bezoar and markhor). The second involved taxa from the bezoar-type clade and Nubian ibexes. The third one involved European ibexes (Alpine and Iberian ibex) and taxa of the bezoar-type clade.

In the comparisons testing introgression between Caucasian tur and taxa from the bezoar-type clade (which does not include markhor), the values of *D*-statistic were similar regardless of the choice of taxa from the bezoar-type group. In contrast, the values of

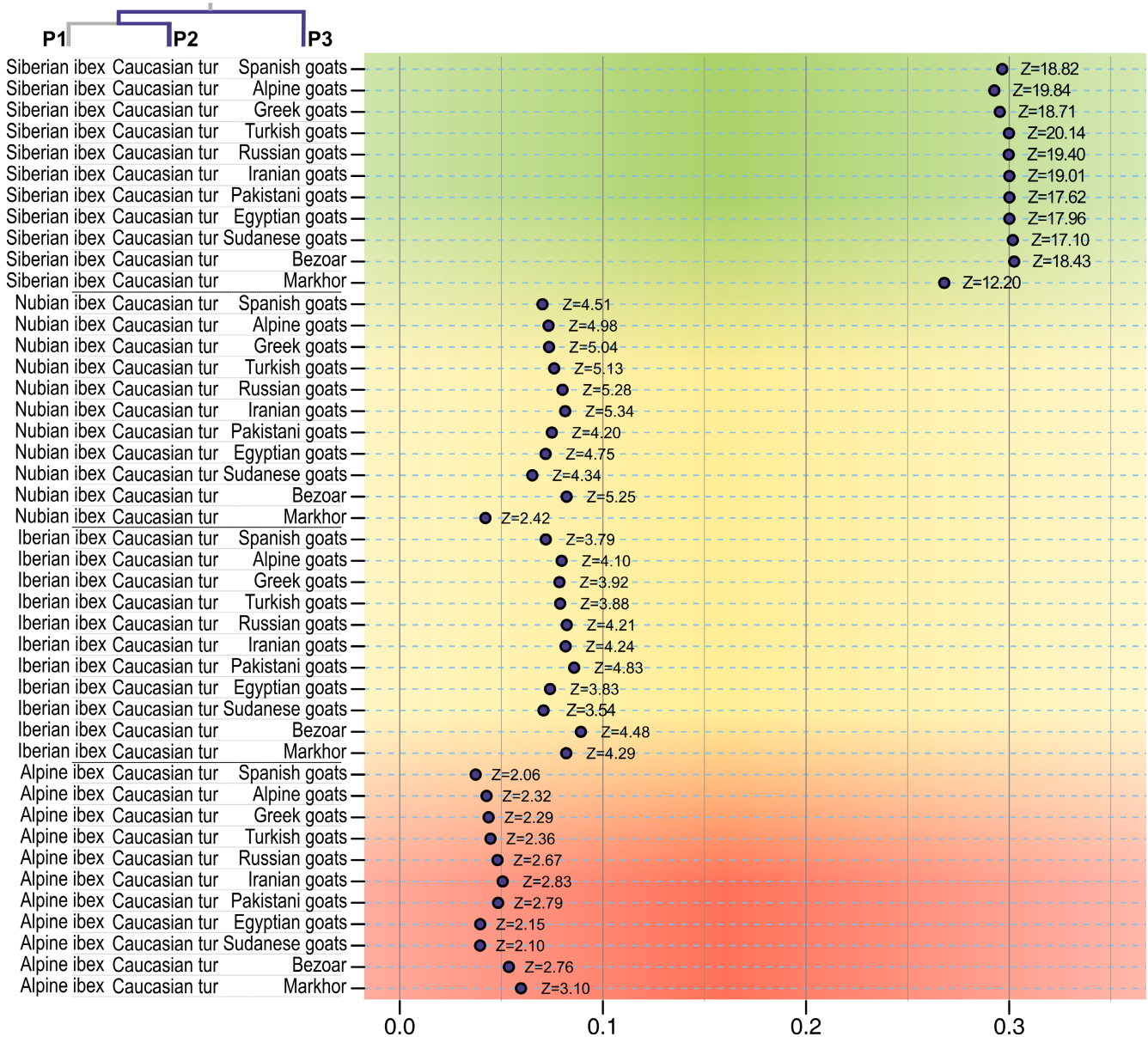


FIGURE 3 *D*-statistic values for gene flow between Caucasian tur and taxa of the bezoar-type clade (domestic, bezoar and markhor). *D*-statistic design groups (P1, P2 and P3) are shown for testing gene flow between P2 and P3 (Z-scores are shown in the chart). The background colour indicates the perceived degree of non-compliance with the assumptions: green represents a low probability of non-compliance, yellow a medium degree and red a maximum probability of non-compliance.

D-statistics for this type of comparison (Caucasian tur and a taxon of true goats) changed significantly, when different taxa were used as P1 (recall that the candidates for introgression are P2 and P3, and P1 is the sister of P2). Arranging the comparisons according to the choice of P1 revealed a stepwise pattern with three levels (Figure 3). The different levels obviously correspond to the degree of conformity with the previously mentioned assumptions of the ABBA/BABA design, namely: (A.1) the lack of gene flow between P1 and P2, (A.2) the lack of gene flow between P1 and P3, and (A.3) a symmetric probability of incomplete lineage sorting in P1 and P2. The highest *D*-statistic values were obtained when P1 = Siberian ibex, a choice that provides a high level of adherence to (A.1), because this taxon is not sympatric

with Caucasian tur and most taxa of the bezoar-type clade (Figure 3; Figure S5, Tables S2 and S3). In contrast, the comparisons where both P1 and P2 were from the bezoar-type clade had the lowest values of the *D*-statistic, several non-significantly different from zero. These comparisons may have a low conformity to (A.1) because in many cases the taxa belong to the same species. In addition, the consistent with (A.3) may be low if the comparison involves a species such as markhor, which is threatened and thus has a high rate of lineage loss, with a domestic breed that has a much higher population size and experience a post-domestication expansion. This pattern suggests that introgression between the Caucasian tur and the bezoar occurred before or during early domestication, and that a detectable amount

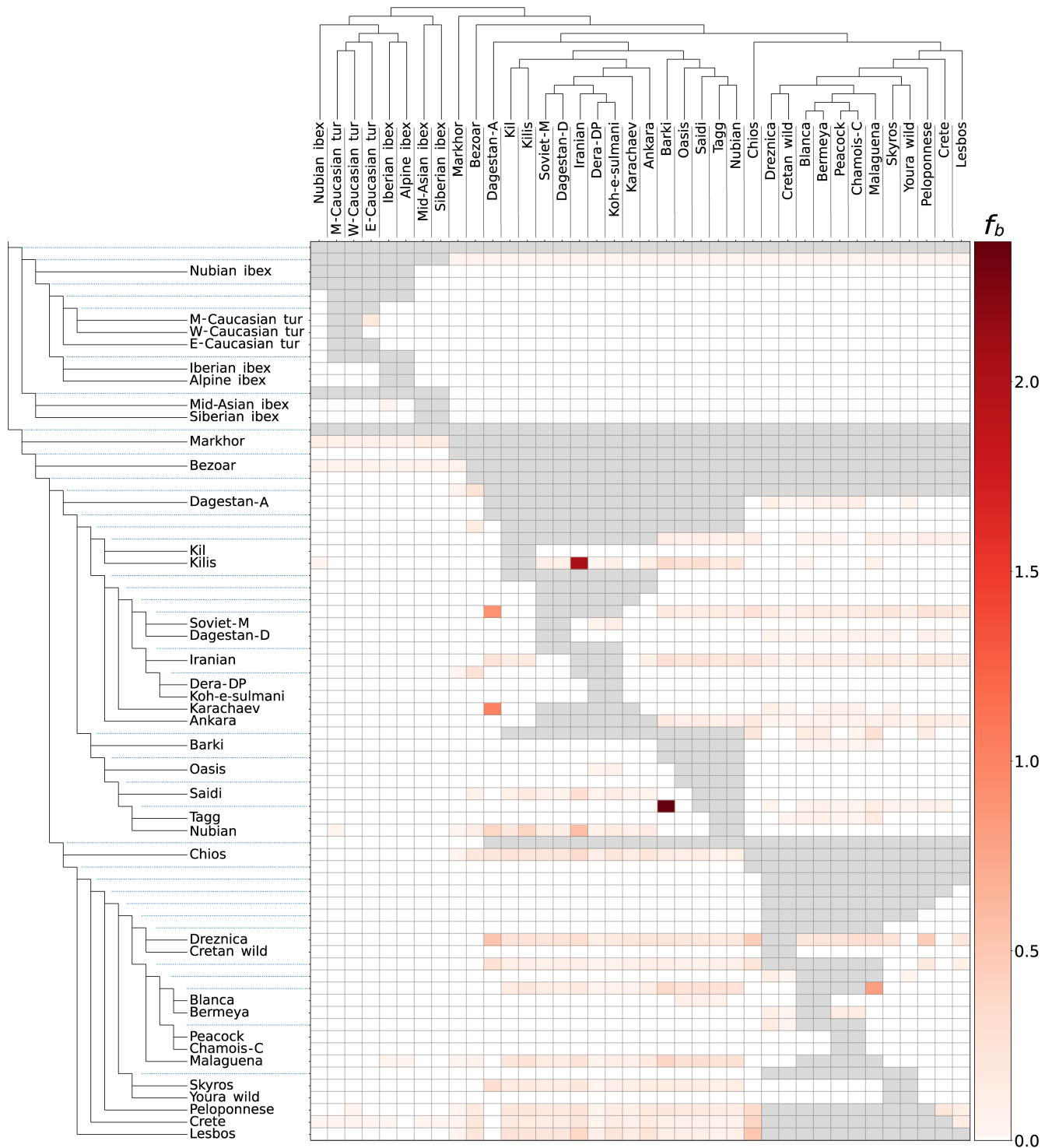


FIGURE 4 Heatmap of f_b -branch statistic (f_b) values. The colour scale at right indicates values of alleles sharing between the tree branch on the vertical axis and the population on the horizontal axis. Cells in grey indicate comparisons that cannot be made.

of shared derived variation was segregated from the bezoar into all domestic populations, as reported by Daly et al. (2022). The alternative explanation would be that all domestics had remarkably similar levels of gene flow with the Caucasian tur, which is endemic to the Caucasus region, but this seems highly unlikely.

Other significant values of the D -statistics (ranging 0.22 to 0.28) were found in comparisons between both European ibexes (Alpine

and Iberian) and taxa of the bezoar-type clade (Figure S5). As above, the values were dependent on the taxa used as P1, and once again, they showed a pattern better explained by ancestral introgression into bezoar rather than into all domestics in parallel. Similarly, the gene flow may also have involved the ancestor of the European ibexes rather than each species. The last group that had consistent and significant D -statistic values (0.23 to 0.26) included comparisons between

Nubian ibex and any taxon of the bezoar-type clade (Figure S5). Once again, the pattern may indicate ancient introgression between Nubian ibexes and bezoar rather than with all domestic goats in parallel.

When we examined the possible effects of ascertainment bias in *TREEMIX*-based inference, we found consistent estimation of topology in both the Goat 50K array and the full set of SNPs extracted from the whole genome sequences (for the subsample for which we had the sequencing data) (see Data S1). The *D*-statistics also displayed similar values in the comparisons to which they were applied, with the major difference being in the significance level. In the analysis based on simulations, the ascertained and unascertained SNP datasets had low statistical power for detecting the migration event 1 (the oldest one). The two datasets also showed remarkably similar power for detecting intermediate-aged events 2 and 3. In both datasets, the very recent event 4 (of the simulated scenario) could not be detected. Altogether, these results suggest a little effect of ascertainment bias in both phylogenetic and gene flow inference of *TREEMIX* and *D*-statistics.

In the analysis of *f*-branch statistics (Figure 4), we found similarly small amounts of shared alleles between an ancestral node of ibexes and all true goats with the markhor. This modest amount of shared variation also appeared between bezoar and markhor and all ibex species. Among domestic breeds, we also detected shared variation involving breeds from Greece, Southwest Asia (from Anatolia to Pakistan), Russia and Africa. This group (Southwest Asia, Russia and Africa) along the Spanish breeds, and their ancestors, also shared significant amounts of variation. A signature of gene flow in this type of comparison, specifically between African and Spanish breeds, was also recognized by *TREEMIX* (Figure S3). Such patterns may be the result not only of recent gene flow, possibly associated with human migrations or trade, but also of an unusually high amount of ancestral segregated variation, or even of an admixed origin.

The three-population statistic (f_3) for detecting admixed populations (which was applied only to domestic goat breeds) yielded significant results for populations that already showed high amounts of shared variation or traces of gene flow with populations that, in this analysis, appear as parental of the admixed candidate (Table S4). Notably, the Malagueña breed from Spain appears to be a hybrid of an African and other Spanish breeds, while the Chios and Peloponnese populations (from Greece) appear as admixtures of Pakistani and Western European breeds. Other significant results may not be the exact result of direct admixture, but of complex ancestry. In this category, we find the Kil and Kilis breeds from Türkiye, the Iranian breed, the Barki from Egypt, the Nubian from Sudan and the Dagestan Aboriginal from Russia.

4 | DISCUSSION

4.1 | Phylogeny of wild and domestic goats

Our complete dataset of 613 individuals from 14 species and subspecies, sampled over different locations in Europe, Asia, North Africa and North America provided a unique opportunity to assess

genetic relationships between wild and domestic goats. Based on genome-wide SNP data, our phylogenetic reconstruction using *TREEMIX* matched morphologically identified species and subspecies (Figure 2b) and had apparently little effects of ascertainment bias (see Data S1). The phylogenetic tree is also in agreement with two reported analyses of Y-chromosome variation that found the genus well separated into bezoar-type and ibex-type clades (Pidancier et al., 2006; VarGoats Consortium et al., 2022). However, the Y-chromosome phylogenies placed the Caucasian turs at a distal end of the Ibexes-type clade, while our phylogeny placed Caucasian turs at the base. Nevertheless, the presence of horizontal gene flow between Caucasian tur and the bezoar-type clade (which we detected with the *D*-statistics) could potentially bring the Caucasian tur to a more basal position of the tree if the correct topology was the one reported with Y-chromosome markers. However, we think that this is not the case, because the Y-chromosome technically constitutes a single locus, while our phylogeny is based on whole-genome SNP data. In support of that, the topology of the ibex-type clade also showed some disagreement with both the Y-chromosome and mtDNA phylogenies, although they agreed in the proximity of the Alpine and Iberian ibexes (Manceau et al., 1999; Pidancier et al., 2006). This close relationship is considered a consequence of an allopatric origin from a single *Capra* ancestor that colonized Europe in a single wave (Ureña et al., 2018).

In domestic goats, the phylogeny displayed a geographically congruent pattern that was largely consistent with published phylogenetic reconstructions (Colli et al., 2018), but our inclusion of less studied breeds provided novel insights. For instance, we found that Crete and Youra wild goats belong within the clade of European domestic goats (with 100% support), confirming them as feral goats rather than independent subspecies of bezoar. They also exhibited long branches that could be signs of demographic bottlenecks, something common in populations isolated on islands. However, in the case of the Cretan wild goats, a limited sampling could influence this. Even though this population is dispersed among various Aegean islands, we were able to sample five animals from a single place on Crete, four from a Berlin Zoo population and one from the island of Sapienza, whose population descended from the wild Cretan goats. These circumstances, that is, isolation, bottlenecks and sampling error, can also explain their lower values of MLH as compared to domestic goats. However, it cannot be ruled out that such populations are constituted by an admixture of early domestic and modern domestic goats that were introduced from Anatolia and the Levant. The feral hypothesis was supported by the analysis of mtDNA of Bar-Gal et al. (2002) who suggested that goats were introduced to Crete by pre-pottery Neolithic settlers and after posterior abandonment and isolation, they returned to the wild.

4.2 | Gene flow between wild and domestic goats

The dynamic history of domestic goats and the existence of extensive regions of sympatric coexistence with wild goats provided

ample opportunity for introgression, with some cases previously documented (Alasaad et al., 2012; Grossen et al., 2014; Hammer et al., 2008). In this study, *D*-statistics showed signatures of gene flow between domestic goats at large and Caucasian tur, European ibexes and Nubian ibexes (Figure 3; Figure S5, Tables S2 and S3). In all these cases, the similarity of values among domestic populations and the lack of sympatry between most domestic goats and these species suggest that introgression was ancient and occurred with bezoar (or even a bezoar ancestor) from which much of the variation was segregated into all domestics. This scenario is likely because the short evolutionary time since domestication and the expansion of the domestic goat population in Eurasia are factors that prevent the purging of ancestral genetic variation. On the other hand, Caucasian tur specimens have been found in archaeological settlements along with the remains of exclusively domestic animals, including goats (Sauer et al., 2015). Introgression between bezoar or early domestics and a lineage related to the Caucasian tur (called 'Taurasian tur') was, in fact, detected by Daly et al. (2022). Moreover, gene flow between Caucasian turs and bezoars has been reported using whole-genome sequencing data from modern and ancient specimens (Zheng et al., 2020).

Another set of relevant signatures of introgression involved European ibexes (Alpine and Iberian) and taxa of the bezoar-type clade. The pattern of *D*-statistics also suggests ancestral introgression between bezoar and the ancestor of European ibexes. Although we cannot discount completely the presence of gene flow between ibexes and sympatric domestic goats (e.g. Alpine goat with Alpine ibex or Iberian goat with Iberian ibex), there was no clear signal of it in our particular sample. A larger sample size and whole genome sequencing data may likely detect such introgression signatures if they exist.

Other introgression events detected by *TREEMIX* (Figure S3) involved Pakistani breeds and bezoar which were detected by *f*-branch statistics as well (Figure 4). Although previous reports supported these events, due to the phylogenetic proximity of bezoar and domestic goats, it is possible that incomplete lineage sorting and alternative scenarios are involved in these results. For example, the presence of genetic structure in bezoar during the early stages of domestication, combined with demographic fluctuations, could lead to a differential segregation of genetic variation in eastern and western domestic goat breeds (Ahmad & Nabi, 2022). The ancestral variation that was present in eastern but not western breeds or vice versa could produce false positives with *D*-statistics and other tests. This can also be confirmed or disregarded with a more extensive regional sampling and genome-wide sequencing data.

A surprising event of gene flow between mountain goats and the ancestor of the western domestic clade was detected with *TREEMIX* (Figure S3). Since mountain goats inhabit the American continent and the probability of contact with a member of the *Capra* genus is virtually zero, we can safely assume that this is an artefact of non-missing genotypes possibly caused in a similar way than the spurious gene flow between the Schipperke and the Poodle dog breed (Fitak, 2021). Another reason for this conclusion is that the

statistical power to detect very old introgression events could be very low for *TREEMIX* and other methods, regardless of ascertainment bias (see Data S1).

4.3 | Gene flow among domestic goat breeds

Domestic goat populations from geographic areas near the original region of domestication are expected to have higher ancestral diversity than populations from distant areas. This was true for Iranian and Turkish breeds, which shared high amounts of genetic variation with breeds from Russia, Greece and Spain. This is more likely due to ancestral relationships rather than contemporary gene flow, in a similar way than the shared variation between bezoar and all domestic goats is due to bezoar being the ancestor of all domestics. However, a genetic affinity between western Asian (including Pakistani populations) and Greek populations has also been reported in cattle (Papachristou et al., 2020). Another event of gene flow between domestic breeds, from Soviet Mohair into Dagestan aboriginal, detected by *f*-branch statistics (Figure 4), has been reported previously (Deniskova et al., 2021). These breeds have also been reported to present extensive zones of hybridization with other breeds in the Caucasus (Selionova et al., 2020).

Our analyses also provided evidence of gene flow between Egyptian and Spanish goat breeds (Figure 4; Figure S3, Table S4). Considering that other studies using various markers (including a goat SNP array) have also reported gene flow between North African and Iberian populations (Colli et al., 2018; Manunza et al., 2016; Pereira et al., 2009), it is likely that gene flow between those populations has been long-lasting, intense or recent as reported by El Moutchou et al. (2018). Such an intercontinental gene flow could be the result of domestic goats' expansion outside their centre of domestication. In Europe, Neolithic farmers expanded along two main routes: the Danube River and the Mediterranean coast (Skoglund et al., 2012). The phylogenetic closeness of Spanish and Alpine breeds suggests that their ancestors were introduced by Neolithic farmers that followed the Mediterranean route (see Figure 2b; Figure S2A). In Africa, Neolithic farmers entered the continent from the northeast via the Levant and spread along the Mediterranean coast, but in this case from the southern edge (Pinhasi et al., 2012). Since both shores of the Mediterranean (North African and European) end at the Strait of Gibraltar, which is also the point of minimum distance between Europe and Africa, it is reasonable to conclude that gene flow between African and Spanish breeds was enabled by human migrants crossing the Gibraltar Strait. However, the presence of multiple contact points at different times is a more likely possibility if we consider the complexity of human migrations in historical and prehistoric times.

Our study, based on whole genome SNP information, offered new insights into the phylogeny of the genus *Capra*. We further refined the model of the evolutionary history of the genus by inferring patterns of gene flow between wild and domestic goats. The results observed here confirm some patterns reported in previous

studies that were solely based on mtDNA or Y-chromosome markers. Interestingly, we did not find clear signatures of recent introgression between domestic goats and wild ibexes despite previous reports. However, sporadic or ancient introgression was captured and probed to be a relevant source of variation shaping the genomic makeup of both wild and domestic goats.

AUTHOR CONTRIBUTIONS

IM and SH designed the study. EH, MS, AA, DP, PK, JS, PB, PL, NiP, IB and NZ coordinated and performed DNA sampling. NeP, AD and MU performed analyses. GB and SR contributed to the manuscript by providing genotypes of some wild and domesticated goats. NeP, MU and ESC wrote the first draft of the manuscript. All authors contributed to writing and reviewing the final manuscript.

ACKNOWLEDGEMENTS

The authors are grateful to Sascha Wellig (Dienststelle für Jagd, Fischerei und Wildtiere, Sion Switzerland) and Dr. Christine Gohl (The Munich Zoo Hellabrunn), as well as Irena Furlan and Pavel Kvapil (The Zoo Ljubljana) for providing the samples of Alpine ibex and mountain goat. Also, we are grateful to Bendersky E.V. and the Mountain Hunters Club for providing part of the samples. In the end, we thank the Greek State Scholarships Foundation (I.K.Y.) for supporting a PhD scholarship. Open Access funding enabled and organized by Projekt DEAL.

FUNDING INFORMATION

The work was in part supported by the RSF within project 21-66-00007 and the RMSHE grant 075-15-2021-1037. Furthermore, we thank the Slovenian Research Agency for funding through the programme grant no. P4-0220, project No. J4-1768, and Young investigator grant to NeP. We are also thankful to DAAD funding programs for supporting our work through the project number BI-DE/20-21-003, DAAD ID-57514909 and DAAD ID-57418683.

CONFLICT OF INTEREST STATEMENT

Authors declare that they have no conflict of interest.

DATA AVAILABILITY STATEMENT

The 50K dataset of SNPs produced in this study can be accessed in plink format on the *figshare* website (<https://figshare.com/>) via accession number: [10.6084/m9.figshare.24190413](https://doi.org/10.6084/m9.figshare.24190413) or directly by this link: https://figshare.com/articles/dataset/PLINK_files_ped_and_map_of_wild_and_domestic_goat_species/24190413. The dataset contains published data: Burren et al. (2016): Dryad; <https://doi.org/10.5061/dryad.q1cv6>; Chebii et al., 2020: NCBI; Project no. PRJNA674751; Chen et al., 2019: NCBI; Project no. PRJNA438286; Colli et al., 2018: Dryad; <https://doi.org/10.5061/dryad.v8g21pt>; Deniskova et al., 2021: Figshare; https://figshare.com/articles/dataset/SNP_based_genotyping_provides_insight_into_the_West_Asian_origin_of_Russian_local_goats/14706429; Denoyelle et al., 2021: ENA; Project no. PRJEB37507; Grossen et al., 2020: NCBI; Project no. PRJNA514886; Hassan et al., 2018: not publicly

available; <https://doi.org/10.1007/s10344-018-1212-z>; Pogorevc et al., 2021: NCBI GEO; Accession no. GSE176157; Rahmatalla et al., 2017: Supplemented to the article; <https://doi.org/10.1186/s12863-017-0553-z>.

ETHICS STATEMENT

The animals used for the first time in this study were not bred, killed or sampled specifically for the needs of our project.

BENEFIT-SHARING STATEMENT

The scientists that provided genetic samples from different countries are part of an active collaboration network. They are included as co-authors and contributed to the analysis, discussion and writing of the manuscript. Their feedback and contributions had a value for conservation or possible usage of local diversity. The results of research have and will be shared with the communities from which the samples originated and the broader scientific community. The study addresses a priority concern that contributes to the conservation of organisms being studied. Our research group is committed to international scientific partnerships, and all samples are collected by local partners according to local regulations.

ORCID

Neža Pogorevc  <https://orcid.org/0000-0002-2369-3829>

Aglaiia Antoniou  <https://orcid.org/0000-0003-1119-9820>

Pamela Burger  <https://orcid.org/0000-0002-6941-0257>

Nikos Poulakakis  <https://orcid.org/0000-0002-9982-7416>

Ivica Medugorac  <https://orcid.org/0000-0002-6891-3039>

REFERENCES

- Acevedo, P., & Real, R. (2011). Biogeographical differences between the two *Capra pyrenaica* subspecies, *C. p. victoriae* and *C. p. hispanica*, inhabiting the Iberian Peninsula: Implications for conservation. *Ecological Modelling*, 222(3), 814–823. <https://doi.org/10.1016/j.ecolmodel.2010.10.006>
- Ahmad, S., & Nabi, G. (2022). Pakistan's markhor population in decline. *Science*, 375(6577), 153. <https://doi.org/10.1126/science.abn0745>
- Alasaad, S., Fickel, J., Rossi, L., Sarasa, M., Benitez-Camacho, B., Granados, J. E., & Soriguer, R. C. (2012). Applicability of major histocompatibility complex DRB1 alleles as markers to detect vertebrate hybridization: A case study from Iberian ibex × domestic goat in southern Spain. *Acta Veterinaria Scandinavica*, 54(1), 1–6. <https://doi.org/10.1186/1751-0147-54-56>
- Alberto, F. J., Boyer, F., Orozco-Terwengel, P., Streeter, I., Servin, B., De Villemereuil, P., Benjelloun, B., Librado, P., Biscarini, F., Colli, L., Barbato, M., Zamani, W., Alberti, A., Engelen, S., Stella, A., Joost, S., Ajmone-Marsan, P., Negrini, R., Orlando, L., ... Pompanon, F. (2018). Convergent genomic signatures of domestication in sheep and goats. *Nature Communications*, 9(1), 813. <https://doi.org/10.1038/s41467-018-03206-y>
- Alexander, D. H., Novembre, J., & Lange, K. (2009). Fast model-based estimation of ancestry in unrelated individuals. *Genome Research*, 19(9), 1655–1664. <https://doi.org/10.1101/gr.094052.109>
- Bar-Gal, G. K., Smith, P., Tchernov, E., Greenblatt, C., Ducos, P., Gardeisen, A., & Horwitz, L. K. (2002). Genetic evidence for the origin of the agrimi goat (*Capra aegagrus cretica*). *Journal of Zoology*, 256(3), 369–377. <https://doi.org/10.1017/S0952836902000407>

- Behr, A. A., Liu, K. Z., Liu-Fang, G., Nakka, P., & Ramachandran, S. (2016). Pong: Fast analysis and visualization of latent clusters in population genetic data. *Bioinformatics*, 32(18), 2817–2823. <https://doi.org/10.1093/bioinformatics/btw327>
- Bickhart, D. M., Rosen, B. D., Koren, S., Sayre, B. L., Hastie, A. R., Chan, S., Lee, J., Lam, E. T., Liachko, I., Sullivan, S. T., Burton, J. N., Huson, H. J., Nystrom, J. C., Kelley, C. M., Hutchison, J. L., Zhou, Y., Sun, J., Crisà, A., Ponce de León, F. A., ... Smith, T. P. (2017). Single-molecule sequencing and chromatin conformation capture enable de novo reference assembly of the domestic goat genome. *Nature Genetics*, 49(4), 643–650. <https://doi.org/10.1038/ng.3802>
- Burren, A., Neuditschko, M., Signer-Hasler, H., Frischknecht, M., Reber, I., Menzi, F., Drögemüller, C., & Flury, C. (2016). Genetic diversity analyses reveal first insights into breed-specific selection signatures within Swiss goat breeds. *Animal Genetics*, 47(6), 727–739. <https://doi.org/10.1111/age.12476>
- Cao, Y. H., Xu, S. S., Shen, M., Chen, Z. H., Gao, L., Lv, F. H., Xie, X. L., Wang, X. H., Yang, H., Liu, C. B., Zhou, P., Wan, P. C., Zhang, Y. S., Yang, J. Q., Pi, W. H., Hehua, E., Berry, D. P., Barbato, M., Esmailzadeh, A., ... Li, M. H. (2021). Historical introgression from wild relatives enhanced climatic adaptation and resistance to pneumonia in sheep. *Molecular Biology and Evolution*, 38(3), 838–855. <https://doi.org/10.1093/molbev/msaa236>
- Cardoso, T. F., Luigi-Sierra, M. G., Castelló, A., Cabrera, B., Noce, A., Mármol-Sánchez, E., García-González, R., Fernández-Arias, A., Alabart, J. L., López-Olvera, J. R., Mentaberre, G., Granados-Torres, J. E., Cardells-Peris, J., Molina, A., Sánchez, A., Clop, A., & Amills, M. (2021). Assessing the levels of intraspecific admixture and interspecific hybridization in Iberian wild goats (*Capra pyrenaica*). *Evolutionary Applications*, 14(11), 2618–2634. <https://doi.org/10.1111/eva.13299>
- Castelló, J. R. (2016). Bovids of the world: Antelopes, gazelles, cattle, goats, sheep, and relatives. *Angewandte Chemie*, 6(11), 951–952.
- Chebbi, V. J., Oyola, S. O., Kotze, A., Entfellner, J. B. D., Musembi Mutuku, J., & Agaba, M. (2020). Genome-wide analysis of Nubian ibex reveals candidate positively selected genes that contribute to its adaptation to the desert environment. *Animals*, 10(11), 2181. <https://doi.org/10.3390/ani10112181>
- Chen, L., Qiu, Q., Jiang, Y., Wang, K., Lin, Z., Li, Z., Bibi, F., Yang, Y., Wang, J., Nie, W., Su, W., Liu, G., Li, Q., Fu, W., Pan, X., Liu, C., Yang, J., Zhang, C., Yin, Y., ... Wang, W. (2019). Large-scale ruminant genome sequencing provides insights into their evolution and distinct traits. *Science*, 364(6446), eaav6202. <https://doi.org/10.1126/science.aav6202>
- Chen, N., Cai, Y., Chen, Q., Li, R., Wang, K., Huang, Y., Hu, S., Huang, S., Zhang, H., Zheng, Z., Song, W., Ma, Z., Ma, Y., Dang, R., Zhang, Z., Xu, L., Jia, Y., Liu, S., Yue, X., ... Lei, C. (2018). Whole-genome resequencing reveals world-wide ancestry and adaptive introgression events of domesticated cattle in East Asia. *Nature Communications*, 9(1), 1–13. <https://doi.org/10.1038/s41467-018-04737-0>
- Colli, L., Milanese, M., Talenti, A., Bertolini, F., Chen, M., Crisà, A., Daly, K. G., Del Corvo, M., Guldbbrandtsen, B., Lenstra, J. A., Rosen, B. D., Vajana, E., Catillo, G., Joost, S., Nicolazzi, E. L., Rochat, E., Rothschild, M. F., Servin, B., Sonstegard, T. S., ... Stella, A. (2018). Genome-wide SNP profiling of worldwide goat populations reveals strong partitioning of diversity and highlights post-domestication migration routes. *Genetics Selection Evolution*, 50(1), 1–20. <https://doi.org/10.1186/s12711-018-0422-x>
- Cubic-Urik, V., Novosel, D., Brajkovic, V., Rota Stabelli, O., Krebs, S., Sölkner, J., Šalamon, D., Ristov, S., Berger, B., Trivizaki, S., Bizelis, I., Ferenčaković, M., Rothhammer, S., Kunz, E., Simčić, M., Dovč, P., Bunevski, G., Bytyqi, H., Marković, B., ... Medugorac, I. (2021). Large scale mitogenome sequencing reveals consecutive expansions of domestic taurine cattle and supports sporadic aurochs introgression. *Evolutionary Applications*, 15, 663–678. <https://doi.org/10.1111/eva.13315>
- Daly, K. G., Arbuckle, B. S., Rossi, C., Mattiangeli, V., Lawlor, P. A., Mashkour, M., Sauer, E., Lesur, J., Atici, L., Ereğ, C. M., & Bradley, D. G. (2022). A novel lineage of the *Capra* genus discovered in the Taurus Mountains of Turkey using ancient genomics. *eLife*, 11, e82984. <https://doi.org/10.7554/eLife.82984>
- Deniskova, T. E., Dotsev, A. V., Selionova, M. I., Reyer, H., Sölkner, J., Fornara, M. S., Aybazonov, A. M. M., Wimmers, K., Brem, G., & Zinovieva, N. A. (2021). SNP-based genotyping provides insight into the west Asian origin of Russian local goats. *Frontiers in Genetics*, 12, 708740. <https://doi.org/10.3389/fgene.2021.708740>
- Denoyelle, L., Talouarn, E., Bardou, P., Colli, L., Alberti, A., Danchin, C., Del Corvo, M., Engelen, S., Orvain, C., Palhière, I., Rupp, R., Sarry, J., Salavati, M., Amills, M., Clark, E., Crepaldi, P., Faraut, T., Masiga, C. W., Pompanon, F., ... Nash, O. (2021). VarGoats project: A dataset of 1159 whole-genome sequences to dissect *Capra hircus* global diversity. *Genetics Selection Evolution*, 53(1), 86. <https://doi.org/10.1186/s12711-021-00659-6>
- Dotsev, A. V., Rodionov, A. N., Kharzinova, V. R., Petrov, S. N., Medvedev, D. G., Bagirov, V. A., Brem, G., & Zinovieva, N. A. (2021). An assessment of applicability of snp chip developed for domestic goats in genetic studies of Caucasian tur (*Capra caucasica*). *Diversity*, 13(7), 312. <https://doi.org/10.3390/d13070312>
- El Moutchou, N., González, A., Chentouf, M., Lairini, K., Muñoz-Mejías, M. E., & Rodero, E. (2018). Exploring the genetic diversity and relationships between Spanish and Moroccan goats using microsatellite markers. *Small Ruminant Research*, 165, 115–123. <https://doi.org/10.1016/j.smallrumres.2018.04.003>
- Fitak, R. R. (2021). OptM: Estimating the optimal number of migration edges on population trees using Treemix. *Biology Methods & Protocols*, 6(1), bpab017. <https://doi.org/10.1093/biomethods/bpab017>
- Giacometti, M., Roganti, R., De Tann, D., Stahlberger-Saitbekova, N., & Obexer-Ruff, G. (2004). Alpine ibex *Capra ibex* x domestic goat *C. aegagrus domestica* hybrids in a restricted area of southern Switzerland. *Wildlife Biology*, 10(2), 137–143. <https://doi.org/10.2981/wlb.2004.018>
- Gómez-Rubio, V. (2017). ggplot2—Elegant graphics for data analysis (2nd Edition). *Journal of Statistical Software*, 77, Book Review 2. <https://doi.org/10.18637/jss.v077.b02>
- Grossen, C., Guillaume, F., Keller, L. F., & Croll, D. (2020). Purging of highly deleterious mutations through severe bottlenecks in Alpine ibex. *Nature Communications*, 11(1), 1001. <https://doi.org/10.1038/s41467-020-14803-1>
- Grossen, C., Keller, L., Biebach, I., Zhang, W., Tosser-Klopp, G., Ajmone, P., Amills, M., Boitard, S., Chen, W., Cheng, S., Dong, Y., Faraut, T., Faruque, O., Heuven, H., Jinshan, Z., Jun, L., Lenstra, H., Li, X., Liu, X., ... Croll, D. (2014). Introgression from domestic goat generated variation at the major histocompatibility complex of alpine ibex. *PLoS Genetics*, 10(6), e1004438. <https://doi.org/10.1371/journal.pgen.1004438>
- Groves, C., & Grubb, P. (2011). *Ungulate taxonomy* (1st ed.). The Johns Hopkins University Press.
- Hammer, S. E., Schwammer, H. M., & Suchentrunk, F. (2008). Evidence for introgressive hybridization of captive markhor (*Capra falconeri*) with domestic goat: Cautions for reintroduction. *Biochemical Genetics*, 46(3–4), 216–226. <https://doi.org/10.1007/s10528-008-9145-y>
- Hassan, L. M. A., Arends, D., Rahmatalla, S. A., Reissmann, M., Reyer, H., Wimmers, K., Abukashawa, S. M. A., & Brockmann, G. A. (2018). Genetic diversity of Nubian ibex in comparison to other ibex and domesticated goat species. *European Journal of Wildlife Research*, 64(5), 52. <https://doi.org/10.1007/s10344-018-1212-z>
- Huson, D. H., & Bryant, D. (2006). Application of phylogenetic networks in evolutionary studies. *Molecular Biology and Evolution*, 23(2), 254–267. <https://doi.org/10.1093/molbev/msj030>

- Jombart, T., & Ahmed, I. (2011). adegenet 1.3-1: New tools for the analysis of genome-wide SNP data. *Bioinformatics*, 27(21), 3070–3071. <https://doi.org/10.1093/bioinformatics/btr521>
- Li, C., Wu, Y., Chen, B., Cai, Y., Guo, J., Leonard, A. S., Kalds, P., Zhou, S., Zhang, J., Zhou, P., Gan, S., Jia, T., Pu, T., Suo, L., Li, Y., Zhang, K., Li, L., Purevdorj, M., Wang, X., ... Wang, X. (2022). Markhor-derived introgression of a genomic region encompassing PAPSS2 confers high-altitude adaptability in Tibetan goats. *Molecular Biology and Evolution*, 39(12), msac253. <https://doi.org/10.1093/molbev/msac253>
- Luikart, G., Gielly, L., Excoffier, L., Vigne, J. D., Bouvet, J., & Taberlet, P. (2001). Multiple maternal origins and weak phylogeographic structure in domestic goats. *Proceedings of the National Academy of Sciences of the United States of America*, 98(10), 5927–5932. <https://doi.org/10.1073/pnas.091591198>
- Malinsky, M., Matschiner, M., & Svoldal, H. (2021). Dsuite – fast D-statistics and related admixture evidence from VCF files. *Molecular Ecology Resources*, 21(2), 584–595. <https://doi.org/10.1111/1755-0998.13265>
- Manceau, V., Després, L., Bouvet, J., & Taberlet, P. (1999). Systematics of the genus *Capra* inferred from mitochondrial DNA sequence data. *Molecular Phylogenetics and Evolution*, 13(3), 504–510. <https://doi.org/10.1006/mpev.1999.0688>
- Manunza, A., Noce, A., Serradilla, J. M., Goyache, F., Martínez, A., Capote, J., Delgado, J. V., Jordana, J., Muñoz, E., Molina, A., Landi, V., Pons, A., Balteanu, V., Traoré, A., Vidilla, M., Sánchez-Rodríguez, M., Sánchez, A., Cardoso, T. F., & Amills, M. (2016). A genome-wide perspective about the diversity and demographic history of seven Spanish goat breeds. *Genetics Selection Evolution*, 48(1), 1–9. <https://doi.org/10.1186/s12711-016-0229-6>
- Masseti, M. (2009). The wild goats *Capra aegagrus* Erxleben, 1777 of the Mediterranean Sea and the Eastern Atlantic Ocean islands. *Mammal Review*, 39(2), 141–157. <https://doi.org/10.1111/j.1365-2907.2009.00141.x>
- Medugorac, I., Graf, A., Grohs, C., Rothhammer, S., Zagdsuren, Y., Gladyr, E., Zinovieva, N., Barbieri, J., Seichter, D., Russ, I., Eggen, A., Hellenthal, G., Brem, G., Blum, H., Krebs, S., & Capitan, A. (2017). Whole-genome analysis of introgressive hybridization and characterization of the bovine legacy of Mongolian yaks. *Nature Genetics*, 49(3), 470–475. <https://doi.org/10.1038/ng.3775>
- Michel, S., Michel, T. R., Saidov, A., Karimov, K., Alidodov, M., & Kholmatov, I. (2014). Population status of Heptner's markhor *Capra falconeri* heptneri in Tajikistan: Challenges for conservation. *Oryx*, 755, 506–513. <https://doi.org/10.1017/S0030605313000860>
- Palamara, P. F. (2016). ARGON: Fast, whole-genome simulation of the discrete time Wright-fisher process. *Bioinformatics*, 32(19), 3032–3034. <https://doi.org/10.1093/bioinformatics/btw355>
- Papachristou, D., Koutsouli, P., Laliotis, G. P., Kunz, E., Upadhyay, M., Seichter, D., Russ, I., Gjoko, B., Kostaras, N., Bizelis, I., & Medugorac, I. (2020). Genomic diversity and population structure of the indigenous Greek and Cypriot cattle populations. *Genetics Selection Evolution*, 52(1), 43. <https://doi.org/10.1186/s12711-020-00560-8>
- Parrini, F., Cain, J. W., & Krausman, P. R. (2009). *Capra ibex* (Artiodactyla: Bovidae). *Mammalian Species*, 830(December), 1–12. <https://doi.org/10.1644/830.1>
- Patterson, N., Moorjani, P., Luo, Y., Mallick, S., Rohland, N., Zhan, Y., Genschoreck, T., Webster, T., & Reich, D. (2012). Ancient admixture in human history. *Genetics*, 192(3), 1065–1093. <https://doi.org/10.1534/genetics.112.145037>
- Pereira, F., Queirós, S., Gusmão, L., Nijman, I. J., Cuppen, E., Lenstra, J. A., Consortium, E., Davis, S. J. M., Nejmeddine, F., & Amorim, A. (2009). Tracing the history of goat pastoralism: New clues from mitochondrial and y chromosome DNA in North Africa. *Molecular Biology and Evolution*, 26(12), 2765–2773. <https://doi.org/10.1093/molbev/msp200>
- Pickrell, J. K., & Pritchard, J. K. (2012). Inference of population splits and mixtures from genome-wide allele frequency data. *PLoS Genetics*, 8(11), e1002967. <https://doi.org/10.1371/journal.pgen.1002967>
- Pidancier, N., Jordan, S., Luikart, G., & Taberlet, P. (2006). Evolutionary history of the genus *Capra* (Mammalia, Artiodactyla): Discordance between mitochondrial DNA and Y-chromosome phylogenies. *Molecular Phylogenetics and Evolution*, 40(3), 739–749. <https://doi.org/10.1016/j.ympev.2006.04.002>
- Pinhasi, R., Thomas, M. G., Hofreiter, M., Currat, M., & Burger, J. (2012). The genetic history of Europeans. *Trends in Genetics*, 28(10), 496–505. <https://doi.org/10.1016/j.tig.2012.06.006>
- Pogorevc, N., Simčič, M., Khayatizadeh, N., Sölkner, J., Berger, B., Bojkovski, D., Zorc, M., Dovč, P., Medugorac, I., & Horvat, S. (2021). Post-genotyping optimization of dataset formation could affect genetic diversity parameters: An example of analyses with alpine goat breeds. *BMC Genomics*, 22(1), 1–23. <https://doi.org/10.1186/s12864-021-07802-z>
- Purcell, S., Neale, B., Todd-Brown, K., Thomas, L., Ferreira, M. A. R., Bender, D., Maller, J., Sklar, P., De Bakker, P. I. W., Daly, M. J., & Sham, P. C. (2007). PLINK: A tool set for whole-genome association and population-based linkage analyses. *American Journal of Human Genetics*, 81(3), 559–575. <https://doi.org/10.1086/519795>
- R Core Team. (2018). *R: A language and environment for statistical computing*. R Foundation for Statistical Computing.
- Rahim, M. (2016). Influence of environmental variables on distribution of wild goat (*Capra aegagrus*), in Iraq by Maxent. *American Scientific Research Journal for Engineering, Technology, and Sciences*, 18(1), 97–107.
- Rahmatalla, S. A., Arends, D., Reissmann, M., Said Ahmed, A., Wimmers, K., Reyer, H., & Brockmann, G. A. (2017). Whole genome population genetics analysis of Sudanese goats identifies regions harboring genes associated with major traits. *BMC Genetics*, 18(1), 1–10. <https://doi.org/10.1186/s12863-017-0553-z>
- Reynolds, J., Weir, B. S., & Cockerham, C. C. (1983). Estimation of the coancestry coefficient: Basis for a short-term genetic distance. *Genetics*, 105(3), 767–779. <https://doi.org/10.1093/genetics/105.3.767>
- Sauer, E. W., Pitskhelauri, K., Hopper, K., Tiliakou, A., Pickard, C., Lawrence, D., Diana, A., Kranioti, E., & Shupe, C. (2015). Northern outpost of the Caliphate: Maintaining military forces in a hostile environment (the Dariali Gorge in the Central Caucasus in Georgia). *Antiquity*, 89(346), 885–904. <https://doi.org/10.15184/aqy.2015.80>
- Selionova, M. I., Aibazov, M. M., Mamontova, T. V., Petrov, S. N., Kharzinova, V. R., Arsen, D. V., & Zinovieva, N. A. (2020). 42 genetic differentiation of Russian goats and wild relatives based on microsatellite loci. *Journal of Animal Science*, 98(Supplement_4), 19–20. <https://doi.org/10.1093/jas/skaa278.037>
- Skoglund, P., Malmström, H., Raghavan, M., Storå, J., Hall, P., Willerslev, E., Gilbert, M. T. P., Götherström, A., & Jakobsson, M. (2012). Origins and genetic legacy of neolithic farmers and hunter-gatherers in Europe. *Science*, 336(6080), 466–469. <https://doi.org/10.1126/science.1216304>
- Stoffel, M. A., Esser, M., Kardos, M., Humble, E., Nichols, H., David, P., & Hoffman, J. I. (2016). inbreedR: An R package for the analysis of inbreeding based on genetic markers. *Methods in Ecology and Evolution*, 7(11), 1331–1339. <https://doi.org/10.1111/2041-210X.12588>
- Tosser-Klopp, G., Bardou, P., Bouchez, O., Cabau, C., Crooijmans, R., Dong, Y., Donnadieu-Tonon, C., Eggen, A., Heuven, H. C. M., Jamli, S., Jiken, A. J., Klopp, C., Lawley, C. T., McEwan, J., Martin, P., Moreno, C. R., Mulsant, P., Nabihoudine, I., Pailhoux, E., ... Zhao, S. (2014). Design and characterization of a 52K SNP chip for goats. *PLoS One*, 9(1), e86227. <https://doi.org/10.1371/journal.pone.0086227>

- Ureña, I., Ersmark, E., Samaniego, J. A., Galindo-Pellicena, M. A., Crégut-Bonnoure, E., Bolívar, H., Gómez-Olivencia, A., Rios-Garaizar, J., Garate, D., Dalén, L., Arsuaga, J. L., & Valdiosera, C. E. (2018). Unraveling the genetic history of the European wild goats. *Quaternary Science Reviews*, 185, 189–198. <https://doi.org/10.1016/j.quascirev.2018.01.017>
- VarGoats Consortium, Nijman, I. J., Rosen, B. D., Bardou, P., Faraut, T., Cumer, T., Daly, K. G., Zheng, Z., Cai, Y., Asadollahpour, H., Kul, B. Ç., Zhang, W., Guangxin, E., Ayin, A., Baird, H., Bakhtin, M., Bâlțeanu, V. A., Barfield, D., Berger, B., ... Lenstra, J. A. (2022). Geographical contrasts of Y-chromosomal haplogroups from wild and domestic goats reveal ancient migrations and recent introgressions. *Molecular Ecology*, 31, 4364–4380. <https://doi.org/10.1111/mec.16579>
- Zeder, M. A., & Hesse, B. (2000). The initial domestication of goats (*Capra hircus*) in the Zagros mountains 10,000 years ago. *Science*, 287(5461), 2254–2257. <https://doi.org/10.1126/science.287.5461.2254>
- Zheng, Z., Wang, X., Li, M., Li, Y., Yang, Z., Wang, X., Pan, X., Gong, M., Zhang, Y., Guo, Y., Wang, Y., Liu, J., Cai, Y., Chen, Q., Okpeku, M., Okpeku, M., Colli, L., Cai, D., ... Jiang, Y. (2020). The origin of domestication genes in goats. *Science Advances*, 6(21), eaaz5216. <https://doi.org/10.1126/sciadv.aaz5216>

SUPPORTING INFORMATION

Additional supporting information can be found online in the Supporting Information section at the end of this article.

How to cite this article: Pogorevc, N., Dotsev, A., Upadhyay, M., Sandoval-Castellanos, E., Hannemann, E., Simčič, M., Antoniou, A., Papachristou, D., Koutsouli, P., Rahmatalla, S., Brockmann, G., Sölkner, J., Burger, P., Lymberakis, P., Poulakakis, N., Bizelis, I., Zinovieva, N., Horvat, S., & Medugorac, I. (2024). Whole-genome SNP genotyping unveils ancestral and recent introgression in wild and domestic goats. *Molecular Ecology*, 33, e17190. <https://doi.org/10.1111/mec.17190>