



Durham E-Theses

Measurement of stress in bolts using resonant ultrasound spectroscopy

Srinivasan, Lakshmi

How to cite:

Srinivasan, Lakshmi (2006) *Measurement of stress in bolts using resonant ultrasound spectroscopy*, Durham theses, Durham University. Available at Durham E-Theses Online: <http://etheses.dur.ac.uk/1997/>

Use policy

The full-text may be used and/or reproduced, and given to third parties in any format or medium, without prior permission or charge, for personal research or study, educational, or not-for-profit purposes provided that:

- a full bibliographic reference is made to the original source
- a [link](#) is made to the metadata record in Durham E-Theses
- the full-text is not changed in any way

The full-text must not be sold in any format or medium without the formal permission of the copyright holders.

Please consult the [full Durham E-Theses policy](#) for further details.

DURHAM UNIVERSITY



SCHOOL OF ENGINEERING

Measurement of Stress in Bolts Using Resonant Ultrasound Spectroscopy

THESIS SUBMITTED FOR THE DEGREE OF MSc (Res)

SUBMITTED BY
Lakshmi Srinivasan

SUPERVISOR
Dr. S Johnstone

January 2006

A copyright of this thesis rests with the author. No quotation from it should be published without his prior written consent and information derived from it should be acknowledged.



15 MAR 2006

Contents

Acknowledgements	2
Abstract	3
1. Introduction	4
2. Literature Survey	6
2.1 Resonant Ultrasound Spectroscopy	6
2.2 Ultrasonic Pulse-Echo measurement	7
3. Background Theory	13
3.1 Acoustic Waves	13
3.2 The Simple Harmonic Oscillator	16
3.3 Vibration of a fixed-fixed string	17
3.4 Resonance	18
3.5 Bolt Theory	19
3.6 Tension control in bolted joints	20
4. Instrument Development	22
4.1 Hardware Specification	22
4.2 Software Development	30
4.3 Description of software code	34
5. Test Methodology	36
5.1 Discussion	36
5.2 Testing a single bolt	40
5.3 Test procedure	42
5.4 Description of test procedure	42
6. Experiments	44
6.1 Bolt parameters	44
6.2 Variation of speed of sound in an unstressed bolt	44
6.3 Experiments with single bolt	47
6.4 Predicting stress in single bolt	57
6.5 Measurement of bolt stress in a group of 10 bolts	61
7. Conclusion	66
References	68
Annexe A Copy of Software	A1
Annexe B User Manual	A2



Acknowledgements

I would like to thank my supervisors, Sherri Johnstone and Joe Gill, who have spent many hours discussing various aspects of this project. Their active participation has helped making this project a success. Robert Noble, Ron Ainsley and Tony Dodds of Hedley Purvis Ltd. have contributed significantly to the project. Thanks must go to the Knowledge Transfer Partnership executives Richard Parker Smith and Val Woof for their role in monitoring progress and providing admin support.

I would like to thank my parents for their support and guidance. Lastly, thanks to Sherri Johnstone for feedback on draft documents.

Abstract

Stress affects the resonance properties of materials. A suitable technology and instrumentation for calculating stress in pre-installed oil pipeline bolts is developed and tested. The technology, Resonant Ultrasound Spectroscopy (RUS), relates the change in bolt resonances to bolt stress, using analysis software. A suitable instrumentation that excites the bolt over a band of frequencies through a broad band sweep and measures the response to compute resonances and bolt stress is developed. The instrumentation and the analysis software operate in a loop with minimum operator input to predict stress in the bolts. The project is primarily aimed at the oil and gas industry but has the potential to fit bolt-testing applications in aerospace, defence and manufacturing industries.

The proposed testing method is new to Non Destructive Testing (NDT) of oil pipeline bolts and has no peers. A calibration data set is built using the resonance information extracted from a set of bolts. Test results are discussed and areas of future work explored. A stress prediction accuracy of $\pm 20\%$ has been achieved with a group of 10 B7 bolts. This project is a Knowledge Transfer Partnership (KTP) project and was done at Hedley Purvis Ltd., in association with Durham University.

CHAPTER 1

INTRODUCTION

The aim of the project is to develop a suitable instrument to measure stress in pre-installed bolts and evaluate measurement software. The project is based on Resonant Ultrasound Spectroscopy (RUS). Resonances of a bolt change if its material property changes. A change in bolt stress induces a relative shift in resonances with reference to resonances measured when the bolt under test is unstressed. Further, the temperature of the bolt affects speed of sound and hence its resonances. The extension length of the bolt on the either side of the flange also affects resonances. Variations in resonances induced by temperature and position are taken into account and compensated by suitable means.

Using resonances to calculate stress in bolts is a new concept to the joint integrity marketplace. Resonances have been widely used in materials testing and intelligent defect detection. In a manufacturing environment, resonances of a manufactured component are checked to verify if it correlates with the resonances of similar good components [10]. The result of that test either passes or fails the component based on its resonance match. Resonant inspection has also been used to compute elastic properties of a material using Resonant Ultrasound Spectroscopy (RUS) [10].

The technologies such as ultrasound pulse-echo and eddy current are available for stress prediction but they require previous information of the bolt under test. In order to predict stress in a pre-installed bolt, pulse-echo and eddy current require the bolt to be tested in unstressed condition i.e. before the bolt is installed in a flange. The resonant inspection instrument could be used to test bolts in flanges without having information of the flange bolt previously. Instead a calibration database which contains resonance information of the bolts that are similar in length, material composition can be used to predict stress in flange bolts. Oil and gas pipelines are often expensive and hazardous to break up, hence RUS would find its use in situations where bolt stress is to be measured in flanges, without prior knowledge of the bolt. A

calibration data set forms the core of proposed test instrument. The data set is built by performing tests with a group of 10 bolts. Each bolt type has its own data set. The bolt type used for this project is a 1" 1/8 B7 bolt, made of steel. This bolt is used to makeup joints in the oil and gas pipelines. For each of the 10 B7 bolts, the information in the data set is organised to contain the length of the bolt (mm), extension of the bolt on either side of the flange (mm), temperature at the time of measurement (degree C), bolt load (KN) and 3 resonances (Hz).

When a bolt is tested, the instrument picks 3 resonances resulting from the broadband sweep. These resonances are then processed using the analysis software that performs a multiple regression analysis on the calibration data set to predict stress.

The project consists of two main parts

1. Hardware and software development
2. Building a calibration data set to predict stress

CHAPTER 2

LITERATURE SURVEY

A literature survey was done on Resonant Ultrasound Spectroscopy and the currently available techniques and instruments to measure stress in bolts.

2.1 Resonant Ultrasound Spectroscopy

RUS originated in National Los Alamos Laboratory, USA. It has been used for industrial applications during the last four years of commercialisation by Quasar Inc. It is a whole-body resonance inspection method that is particularly suited to inspecting smaller mass produced hard components, and one test will inspect the complete component without need for scanning, immersion in liquids, chemicals, abrasives or other consumables [11].

Operational Theory of RUS

Hard components have their own resonant frequencies. A bell will ring with specific note. This note is actually a combination of several pure tones, each representing a different resonance mode of the bell or harmonics of them. Wine glasses also have resonant frequencies. The tone of the ringing depends upon the size of the glass, a small glass ringing at a higher note than a large glass. This implies that resonant inspection can differentiate between components of different sizes. A bell and glass of the same size will ring at different frequencies. This implies that resonant frequency is dependant upon the material of tested component. In addition, a good bell or wine glass will ring true, whilst a cracked bell or wine glass will ring with a “cracked note” or will “clunk” instead of ringing. This tells us that we can detect cracks in resonant inspection. People have been inspecting components by hitting them with a hammer and listening to them ringing for centuries. Modern electronics have enabled us to take the human element out of the inspection process, thus measuring more frequencies and

recognising more subtle changes than are detectable with human ear. This also enables automation of the inspection process and also move into the ultrasound region to detect smaller differences.

Resonant inspection operates by exciting a component with a sine wave excitation at one specific frequency (thereby putting all of the energy into that one frequency) then quickly sweeping all the individual frequencies through the required range [1]. A hammer striking the component will put all the energy into a broad spectrum (from DC up to hundreds of kilohertz), with only a small amount at the resonant frequencies. This swept-sine wave approach allows a much improved signal to noise ratio compared to the hammer blow technique [1]. A narrow band filtered typically only several Hertz wide, will recover the swept sine wave. This vastly improves signal to noise ratio and raises the detectability of inspection by orders of magnitude compared to the old hammer method [1].

The invention of RUS relates to acoustical measurements in solid materials and more particularly to the use of resonant ultrasound spectroscopy to determine a variety of material properties. The elastic properties of solid crystals, metals, alloys, ceramics and glasses are some of the most basic data in the physical sciences. Acoustic resonances data are also related to defects and sound dissipation properties of the material [2]. While stressing a bolt, it dissipates sound due to the stretch in bolt. Hence resonance affects stress in bolt.

2.2 Ultrasonic Pulse-Echo measurement:

Ultrasound pulse-echo is widely used to measure stress in bolts. This method is based on calculating the time of flight of an ultrasonic pulse between the two ends of the bolt. A stressed bolt is longer than the unstressed bolt. Time of flight measurements on the bolt before and after it is stressed gives a time difference that can be used to calculate stress in the bolt as a function of elongation due to stress.

When threaded fastening systems (comprised of a bolt or stud and a nut) are tightened, the threaded fastener is said to be tensioned. The tensioning force in the fastener is equal to the fastening system's clamping force. Tensioning force is also called load. An ultrasonic pulse-echo instrument determines the load

in the fastener by measuring the amount of time it takes for a sound wave to travel along a fastener's length, before and after the tensioning force is applied to the fastener [3]. The fastener material's acoustic velocity, together with difference in measuring times, allows the instrument to calculate the change in fastener length under the tensile load [3]. Provided the fastener's dimensional and material properties are known and the constants that represent the material properties are entered into the instrument, the pulse-echo instrument calculated the load and stress present when the fastener is in its tensioned state [3].

For at least 15 years attempts have been made to use ultrasonics to measure bolt preload, the tension in a tightened bolt or stud. For example, conventional time-of-flight thickness gauges were used in an attempt to detect the small change in length that occurs when a fastener is tightened. The time required for the ultrasonic signal to make a round trip in the fastener is, however, affected by the change in stress level in the fastener (ultrasonic velocity decreases as stress increases) and by the increase in path length. A conventional thickness gage doesn't expect to encounter a stress change, so it gives a "wrong" answer that must be analyzed to determine the actual change in the "thickness" (length) of the bolt. It is not a simple matter to predict the ratio between the stress effect on transit time and the strain effect, even today. As a result, the data obtained with conventional ultrasonics required too much analysis and interpretation to be of use.

Another problem with conventional ultrasonics was the high resolution required to measure the tiny changes that occur in a bolt as it is loaded. For short fasteners with typical length 50 mm, an instrument capable of measuring a change in length of about 0.0000127 % (0.002 mm or even 0.0002 mm) is required. Thickness gages in general did not have the required accuracy. However, the need for accurate preload control, to check such things as fatigue, vibration loosening, and leaks, remained so that interest in ultrasonic measurement persisted in spite of the difficulties. Since 1976, a number of instruments (some of them digital) have been placed on the market.

Although ultrasonic measurement of preload is still not widespread, the practical problems are slowly being overcome, and usage is increasing. Recent

work, for example, has involved such things as bridges, critical joints in natural gas compressors, off-road construction equipment, foundation bolts in nuclear construction, and critical joints in refineries and petrochemical plants where the goal is leak prevention. Some case histories are presented below.

Principle of operation:

The principle of operation of a typical digital extensometer is fairly straightforward. A pulser within the instrument shocks a transducer which then delivers a brief, highly damped pulse of ultrasound (typically about 1 or 1/2 cycle) to one end of the fastener. This pulse travels through the fastener, echoes off the far end, and returns to the transducer. The instrument measures the transit time, or time of flight, required for the pulse to make the round trip. The time is entered in the memory bank of the microprocessor inside the extensometer. The bolt is then tightened, increasing the length of the path the signal must travel and decreasing the velocity of the ultrasound. The new, increased transit time is also entered in the microprocessor's memory.

The microprocessor computes the total change in transit time, computes and discards the portion of the change that resulted from the change in velocity, and presents a readout of the actual change in the length of the fastener. Note that in order for the microprocessor to give a readout of the actual change in length, it must make and statistically average a large number of measurements of transit time. This is because the change between unstressed and stressed transit times is very small - a fraction of a nanosecond. To interpret such a difference accurately enough with only one measurement would require logic and timing circuits operating at megahertz or gigahertz speed. This would mean state-of-the-art logic, presently available only under laboratory conditions, and that would mean a lot of field problems and a very high unit cost. Since measurement errors will be randomly scattered, however, a suitable degree of accuracy can be obtained by taking many measurements and computing their statistical mean.

One other factor must be considered. A temperature change will affect the length of the fastener and the velocity of the ultrasonic signal. If the temperature of the fastener changes between stressed and unstressed readings,

the influence of temperature on velocity and length must therefore be factored out by the microprocessor.

Advantages of Ultrasonic Control

1. Controlling bolt preload by ultrasonically measuring elongation is far more accurate than torque and/or turn control.
2. In an actual field situation, all the bolts in a joint can be measured and controlled in this way, not just a few strain-gauged samples.
3. Ultrasonic measurements of stretch are more accurate than measurements made with a micrometer. If the operator is skilled, ultrasonic measurements are faster than measurements made with a micrometer. Note, too, that access to only one end of a fastener is needed to measure it ultrasonically.
4. Both dynamic and static measurements can be made, and residual preload can be measured at any time after the initial tightening. This means that one can monitor short and long-term relaxation effects, external load effects, temperature effects, vibration loosening, fatigue loading, and the like. Again, these things can be done on all of the bolts in a joint, not just a few strain-gauged samples.
5. The extensometer can be used to control any kind of tool, from a torque wrench to a tensioner to a slug or impact wrench. For example, the fastest way to do a job is often with an impact wrench. Using the extensometer for control makes this a very accurate procedure.
6. Using an extensometer for control can often speed up a job. For example, a joint can often be put together with fewer passes, because one can see and compensate for relaxation effects, bring up all the fasteners together, avoid over tightening, and so forth.

Disadvantages of Ultrasonic Measurement

Given the present state-of-the-art, there are also some disadvantages to ultrasonic measurement:

1. In order to obtain the most accurate readings, the instrument must be recalibrated for each new application. The calibration procedure is simpler than it was a few years ago, but it is still necessary.
2. It takes a fair amount of operator skill to use the instrument. Such factors as selection and placement of the transducer, what to do if signal strength is seriously reduced by bending in the fastener and a phenomenon called "peak jumping" all require a trained operator.
3. The results obtained with the extensometer are often a surprise. Jobs can be slowed or stopped as engineers struggle to analyze, explain, and compensate for some of the things revealed by the extensometer. It must be recognized that the phenomena revealed by the extensometer have always been present; it is just that they have never been observed before. Once the phenomena are observed, one must explain and/or do something about them.
4. It is necessary to keep a log of the original length of each fastener if one wants to tighten a joint in multiple passes or make long-term measurements.

Measurement Accuracy

The current ultrasonic time-of-flight instruments are capable of resolving a change in length as small as 0.0002 mm for fastener lengths up to 6350 mm. However accuracies like these are possible only in aerospace, laboratory, or quality-control conditions. In most work at construction sites or petrochemical plants, the measurements are usually accurate to the nearest 0.013 mm, and the measurements are used to control preload within 5 to 15 percent. The length of a typical B7 bolt used in oil and gas pipeline is 160 mm. The working load of the bolt is about 140 kN – 220 kN. A 140 kN load causes a 0.2625 mm extension in bolt length. It corresponds to a strain of 0.0016. At 160 kN, the extension in bolt length is 0.2905 mm. The change in bolt length between 140 kN and 160 kN is 0.028 mm, which is within the resolution of the instrument i.e. 0.013 mm. However the difference $0.028 - 0.013 \text{ mm} = 0.015 \text{ mm}$ can be easily masked by factors such as protrusions, rust or cracks on the bolt surface. The ultrasonic transducers use gels as coupling agents, which adds to the overall change in length. Bolts in oil and gas pipelines are rarely in polished condition and the amount of gel used as couplant may change every time a measurement is made. Hence these practical limitations constitute to the

measurement error. If for example the practical constraints add a 0.015 mm to the overall length, the stress measurement accuracy is 9.1%, which corresponds to ± 20 kN on a scale of 0 – 220 kN.

CHAPTER 3

BACKGROUND THEORY

This section discusses the background theory of Resonant Acoustic Inspection and brings forth the ideas to achieve project objectives using appropriate instrumentation and test procedure. An Instrument setup and test strategies are derived from this section.

3.1 Acoustic waves

A wave is defined as a disturbance or variation that transfers energy progressively from point to point in a medium and that may take the form of an elastic deformation or a variation of pressure, electric or magnetic intensity, electric potential or temperature [4]. Importantly, a wave is a disturbance or variation which travels through a medium. The medium (bolt) through which an acoustic wave travels may experience some local oscillations as the wave passes, but the particles in the medium do not travel with the wave. The disturbance may take any of a number of shapes, from a finite pulse width to an infinitely long sine wave. In RUS, the bolt is excited by the acoustic sine wave. This is derived from the previous work on Resonant Ultrasound Spectroscopy, at National Alamos Laboratory, U.S.A. When longitudinal waves pass through air, the particles in air oscillate back and forth about their equilibrium positions but it is the disturbance which travels, not the individual particles in the medium. In the same way, transverse waves on a bolt are another example. The bolt is displaced up and down as the wave travels from left to right, but the bolt itself does not experience any net motion. This explains that the output of the receiving transducer is a sine wave.

There are two basic types of wave motion. Longitudinal and Transverse waves, see fig 3.1. In longitudinal waves, the particle displacement is parallel to the direction of wave propagation. The particles do not move with the wave; they simply

oscillate back and forth about their equilibrium positions. The wave is a motion of the compressions and rarefactions, i.e. it is a pressure wave. In transverse wave the particle displacement is perpendicular to the direction of wave propagation. The particles do not move along with the wave, they simply oscillate up and down about their equilibrium positions as the wave passes.

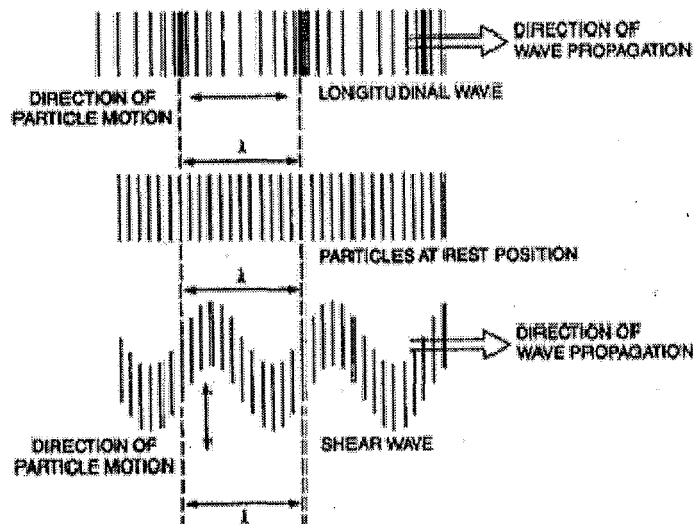


Fig 3.1 Longitudinal and Transverse waves

Another example of waves with both longitudinal and transverse motion can be found in solids as Rayleigh surface waves. The particles in a solid, through which a Rayleigh surface wave passes, move in elliptical paths, with the major axis of the ellipse perpendicular to the surface of the solid. As the depth into the solid increases the “width” of the elliptical path decreases. In a Rayleigh surface wave, particles at the surface trace out a counter-clockwise ellipse, while the particles at a depth of more than $1/5^{\text{th}}$ of a wavelength trace out clockwise ellipses. The table 3.1 (a) compares various wave types in solids and their corresponding particle vibrations [4].

Wave Types in Solids	Particle Vibrations
Longitudinal	Parallel to wave direction
Transverse (Shear)	Perpendicular to wave direction
Surface - Rayleigh	Elliptical orbit – symmetrical mode

Table 3.1(a). Wave types in solids and their mode of vibration.

Among the properties of waves propagating in isotropic solid materials are wavelength, frequency, and velocity. The wavelength is directly proportional to the velocity of the wave and inversely proportional to the frequency of the wave. This relationship is shown by the following equation.

$$wavelength(\lambda) = \frac{velocity(v)}{frequency(f)}$$

The quoted parameters of structural steel are as follows [5].

Young's Modulus: 200 GPa

Poisson's ratio: 0.26

Density: 7850 kg/m³

Longitudinal wave speed: 5583.3 m/s

Transverse wave speed: 3179.7 m/s

Rayleigh wave speed: 2928.6 m/s

The particle motion in Rayleigh wave speed goes from counter-clockwise to clockwise at a depth of 0.1902 times the wavelength.

3.2 The Simple Harmonic Oscillator

In order for mechanical oscillation to occur, a system must possess two quantities: elasticity and inertia. When the system is displaced from its equilibrium function, the elasticity provides a restoring force such that the system tries to return to equilibrium. The inertia property causes the system to overshoot equilibrium. This constant play between the elastic and inertia properties is what allows oscillatory

motion to occur. The natural frequency of oscillation is related to the elastic and inertia properties by [6]

$$\omega_0 = 2\pi f_0 = \sqrt{\frac{\text{elasticity}}{\text{inertia}}} \quad (3.1)$$

Where, f_0 = natural frequency or resonant frequency.

The simplest example of an oscillating system is a mass connected to a rigid foundation by the way of spring. The spring constant k provides the elastic restoring force, and the inertia of the mass m provides the overshoot. By applying Newton's second law $F = ma$ to the mass, one can obtain the equation of motion for the system [6].

$$m \frac{d^2x}{dt^2} + kx = 0 \rightarrow \frac{d^2x}{dt^2} + \frac{k}{m}x = 0 \rightarrow \frac{d^2x}{dt^2} + \omega_0^2 x = 0 \quad (3.2)$$

Where, $\omega_0 = \sqrt{\frac{k}{m}}$ is the natural oscillating frequency. The solutions to this equation of motion take the form [6]

$$x(t) = x_m \cos(\omega_0 t + \phi) \quad (3.3)$$

where x_m is the amplitude of oscillation and ϕ is the phase constant. Both x_m and ϕ are constants determined by the initial condition (initial displacement and velocity) at time $t=0$ when one begins observing the oscillatory motion. The period of oscillatory motion is defined as the time required for the system to start one position, complete a cycle of motion and return to the starting position.

When damped and un-damped mass-spring systems are released from rest, the un-damped mass exhibits simple harmonic motion while the damped mass exhibits an oscillatory motion which decays with time. When the bolt is excited with a sine wave, it can be studied as a forced harmonic oscillator.

3.3 Vibration of a fixed-fixed string

The vibration of a string whose ends are fixed can be used to understand natural resonances in a bolt. When the end of the string is fixed, the displacement of

the string at that end must be zero. A transverse wave travelling along the string towards a fixed end will be reflected in the opposite direction. When a string is fixed at both ends, two waves travelling in opposite directions simply bounce back and forth between the ends [6].

$$y(x,t) = y_m \sin(kx - \omega t) + y_m \sin(kx + \omega t) \quad (3.4)$$

The equation for wave travelling in the opposite direction is given by

$$y(x,t) = y_m \sin(\omega t - kx) + y_m \sin(\omega t + kx) \quad (3.4 a)$$

The vibration behaviour of the string depends on the frequency (and wavelength) of the waves reflecting back and forth from the ends. A string which is fixed at both ends will exhibit strong vibration responses only at the resonant frequencies.

$$f_n = \frac{nv}{2L} \quad (3.5)$$

where $v = \sqrt{\frac{\tau}{\rho}}$ is the speed of transverse mechanical waves on the string, L is the string length and n is an integer. At any other frequencies, the string will not vibrate with any significant amplitude. The resonance frequencies of the fixed-fixed string are harmonics of the fundamental frequencies ($n = 1$).

The vibrational pattern (mode shape) of the string at resonance will have the form [6]

$$y(x,t) = y_m \sin\left(\frac{n\pi}{L}x\right)\cos(2\pi ft) \quad (3.6)$$

This equation represents a standing wave. There will be locations on the string which undergo maximum displacement (antinodes) and locations which do not move at all (nodes). In fact, the string may be touched at a node without altering the string vibration.

When a swept sine wave is introduced into an ultrasonic transducer, the transducer produces a swept sine wave of mechanical vibration. The vibration could be dry coupled into the bolt and the bolt itself begins to vibrate at the same frequency

as the sine wave. When the frequency of the sine wave generated equals one of the bolt's resonant frequencies or Eigen frequencies, the amplitude of vibration in the bolt increases greatly, the bolt acting as a mechanical amplifier. A receiving transducer could be placed opposite to the transmitting end, to measure the amplitude of the vibrations in the component at the moment in time and at the same frequency as the generated vibration. The received signal can be amplified and filtered using a band-pass filter to improve the signal to noise ratio of the signal. An amplitude vs frequency plot can then be drawn for each vibrational amplitude and signal frequency in order to obtain a spectrum of the bolt.

3.4 Resonance

Resonance is a result of constructive and destructive interference of standing waves in an ultrasonic medium. Frequency is inversely related to wavelength by the equation [7]

$$V = F \lambda. \quad (3.7)$$

Where,

V is the sound velocity in the ultrasonic medium

F is the ultrasonic signal frequency

λ , wavelength.

The fundamental frequency occurs when there is half of a wavelength in the bolt, so twice the length of the bolt can be substituted for λ . In the equation (3.7).

$$V = F \times 2L \quad (3.8)$$

Where,

L is the length of the bolt.

The harmonic frequencies are integer multiples of the fundamental frequency and they occur when there are multiples of $1\lambda/2$ in the bolt length (i.e. length of the bolt, $L = 2\lambda/2, 3\lambda/2$ etc.)

At the harmonic frequencies, the incident and reflected waves are in phase and therefore cause constructive interference. Conversely, when the thickness of a medium equals odd multiples of $1\lambda/2$ (i.e. $3\lambda/4, 5\lambda/4$ etc.), the incident and

reflecting waves are out of phase causing destructive interference. The periodic constructive and destructive interferences in a resonance spectrum can be termed resonant peaks and valleys. Because the harmonic frequencies are integer multiples of the fundamental frequencies, the spacing of the resonant peaks equal to the fundamental frequency. The resonant frequency spacings in a spectrum can give a thickness measurement if the velocity is known and vice versa.

The fundamental resonant frequency is calculated using the expression

$$F = V / 2 L \quad (3.9)$$

3.5 Bolt Theory

Most fastener applications are designed to support or transmit some form of externally applied load. The most widely associated mechanical property associated with standard threaded fasteners is tensile strength. Tensile strength is the maximum, tension-applied load the fastener can support prior to or coinciding with its fracture.

The maximum tensile load a fastener can withstand is determined by the formula [8]

$$P = St \times As$$

where

P = tensile load (lb., N)

St = tensile strength (psi, MPa)

As = tensile stress area (sq. in, sq. mm)

The proof load represents the usable strength range for certain standard fasteners. By definition, the proof load is an applied tensile load that the fastener must support without permanent deformation. In other words, the bolt returns to its original shape once the load is removed.

Steel possesses a certain amount of elasticity as it is stretched. If the load is removed and the fastener is still within the elastic range, the fastener will always return to its original shape. If, however, the load applied causes the fastener to be brought past its yield point, it now enters the plastic range. Here, the steel is no longer able to return to its original shape if the load is removed. The yield strength is the point at which permanent elongation occurs. If we would continue to apply a load, we would reach a point of maximum stress known as the ultimate tensile strength. Past

this point, the fastener begins to “neck” and elongate further with a reduction in stress. Additional stretching will ultimately cause the fastener to break at the tensile point. Figure 3.5 illustrates a typical stress-strain relationship of a bolt as a tension load is applied.

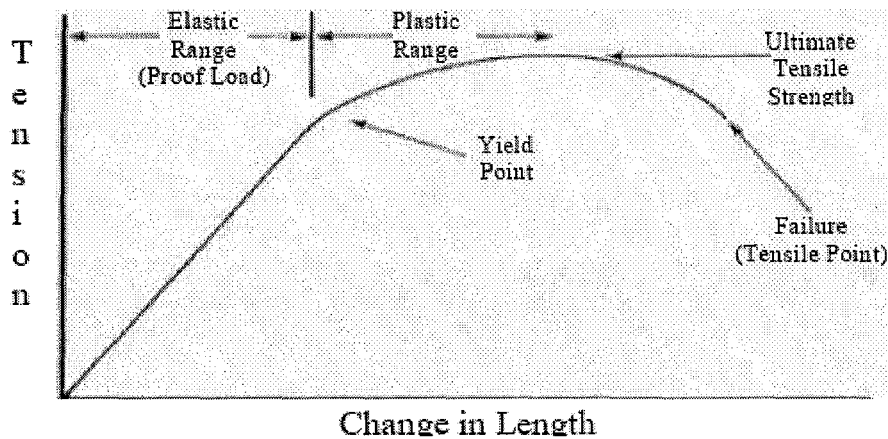


Figure 3.5. Tensile Stress-Strain Diagram for a steel bolt

3.6 Tension Control in Bolted Joints

Threaded fasteners can do a good job of holding things together only when they are properly tightened. The fastener to ensure the proper performance of the joint must produce an appropriate tension. To this day a simple, inexpensive, and effective way to determine if a fastener is properly tightened has not been found. Through the years, satisfactory ways have been discovered, but they are neither simple nor inexpensive. In most situations we rely on less-than-perfect, but adequate traditional methods.

Were most joints not massively over-designed to accommodate inaccurate tightening, simple tightening procedures could prove in-adequate. Designers will specify more or larger bolts than needed in order to ensure that the joints are clamped together with the amount of force required. Fewer or smaller fasteners can be used when accurate control of bolt tension or preload is assured during assembly. For most applications the over-design of the joint has been far cheaper than controlling the assembly process.

Current trends for most applications, however, no longer favor the use of over-design. Increasing demands on cost, strength-to-weight ratios, product performance, and environmental concerns have put pressure on designers, manufacturers and assemblers to do a better job with fewer, lighter parts. This trend has led to the discovery of more options in controlling design preload.

Whenever we tighten a bolt, a sequence of events takes place. By applying torque to the head, or the nut, we turn the fastener being torqued. This action stretches the bolt (similar to a spring) and creates a tension in the bolt. In most cases it is this tension or preload that we need to make a fastening. By controlling torque, turn, or stretch, we can control the buildup of tension. The closer we approach direct control of tension, the more accurate and expensive the method will be.

CHAPTER 4

INSTRUMENT DEVELOPMENT

Instrument development is done in two stages

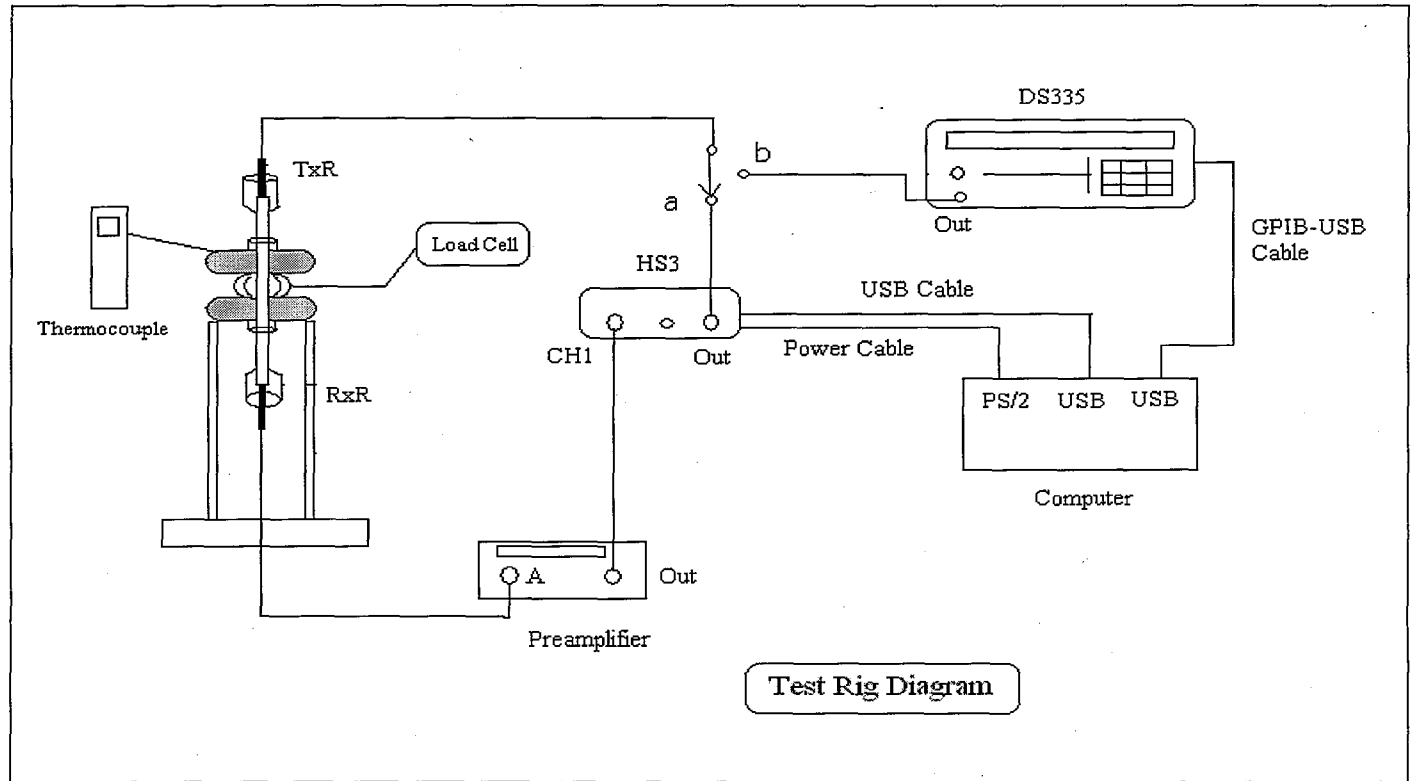
1. Specification
2. Writing system software and integration

The ultimate goal of the instrument is to excite the bolt at its resonant frequencies and extract useful resonances from the bolt, so that analysis software in a laptop computer can process the information to predict stress. A suitable set of instruments are specified and procured to be customised and integrated as in fig 4.1, 4.2 and 4.3.

4.1 Hardware Specification:

For the bolt to be excited at its resonant frequencies with a clean sine wave, a very high resolution sweep generator is required. A resonant inspection transducer converts the signal from the sweep generator into an equivalent acoustic wave. The transducer is in direct contact with the bolt surface and the acoustic wave is transmitted into the bolt. Another transducer at the receiving end of the bolt senses any pressure wave or vibration that is set up in the bolt and converts it into an equivalent electric field. At a bolt resonance, the output of the receiving transducer is typically 2 – 10 mV for a 1' 1/8", 160mm long B7 bolt. The maximum data logger sensitivity is 200 mV. Hence a voltage pre-amplifier is needed to boost the signal to acceptable levels. The output of the amplifier is connected to the data logger which converts the signal into digital values and stores in a data file for further processing. A detailed description of each instrument follows.

Fig 4.1 Test Rig Diagram showing the instrument setup



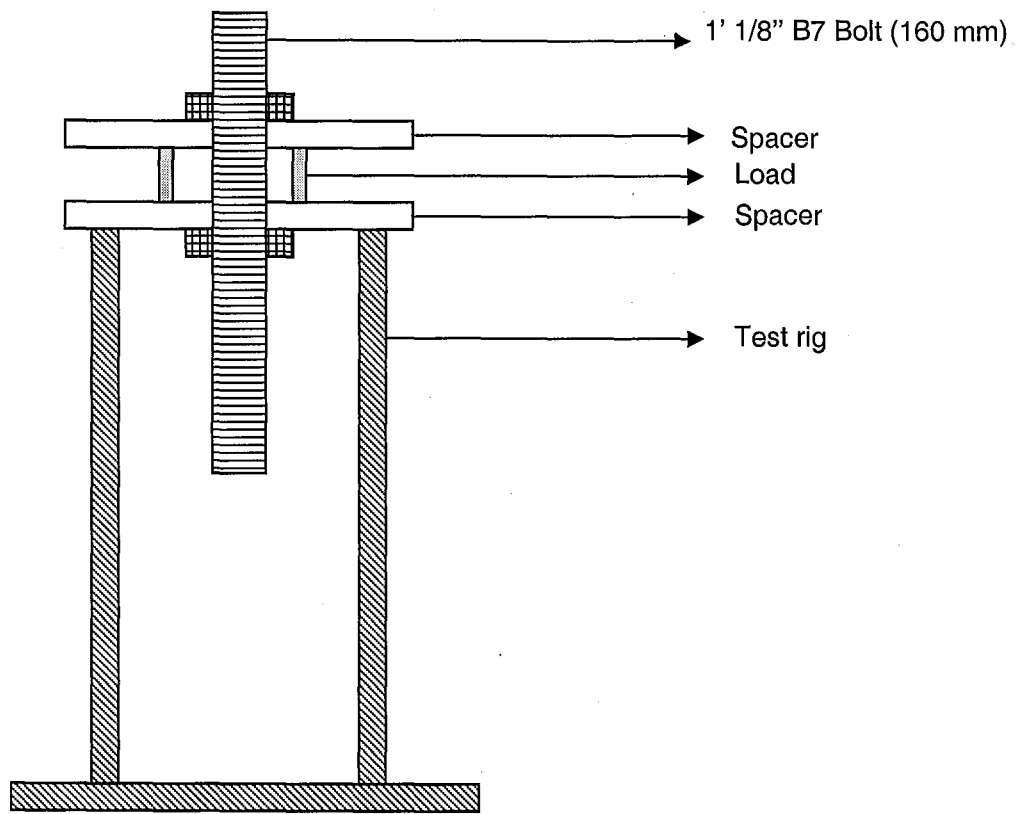


Fig 4.2 Structure of load cell

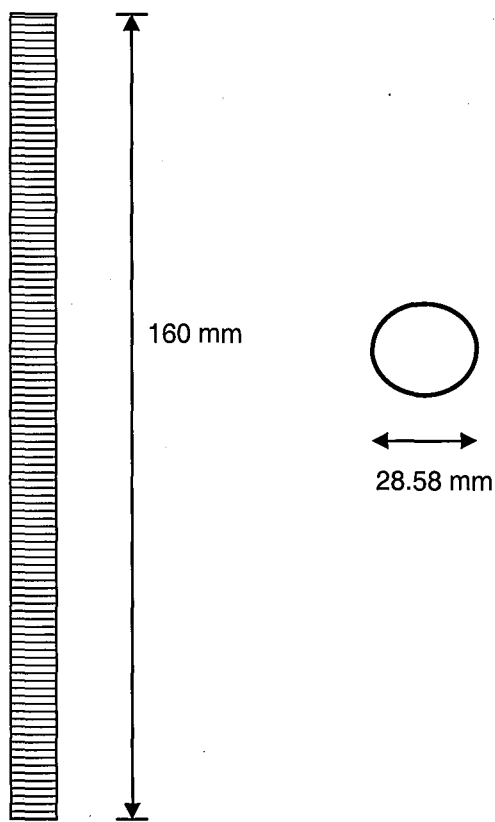


Fig 4.3 Bolt dimensions – Length and diameter

4.1.1 Resonant Inspection Transducers

Transducer is a term used to define a component which converts one form of energy into another. It is a device in which the application of an electric field across the active element produces mechanical deformation of the active element thereby generating ultrasonic vibrations and vice versa [12]. The transducer forms the actual core in all non-destructive ultrasonic inspection procedures. The choice of correct transducer is decisive for the quality and reliability of inspection results. Depending on the application, transducers differ with respect to the size of active piezoelectric elements, their frequency, bandwidth and basic design. The sound field characteristics of a transducer, which are expected under normal inspection conditions, are generally derived from the diameter and frequency of the piezoelectric element.

For the bolt to be excited at a sufficiently large number of resonances, the frequency of operation range is between 1 kHz – 200 kHz. The transducer is designed to have its own resonant frequency outside its operating range. Quasar Inc. based in U.S, is the leader in supplying components for resonant inspection. Quasar resonant inspection transducers are highly suited to measuring bolt stress due to its operating bandwidth of 10 kHz – 200 kHz. The bolt resonances are in the region of 20 kHz – 200 kHz. The transducer is ceramic tipped so as to minimize the transducer becoming a part of vibrating system i.e. bolt. Ceramic tipping also allows contact on hot surfaces. Diameter and crystal characteristics of the transducer element are with held by the supplier.

4.1.2 DS335 – Very High Resolution Sweep Generator.

Based on Direct Digital Synthesis (DDS) architecture, the DS335 sweep generator shown in fig. 4.4 is capable of generating frequencies from 0.01 Hz – 3.1 MHz. It can generate sinusoidal, square, triangle waves. The frequency resolution of the device is 1 μ Hz. The resolution of frequency step that is required for a sweep to accurately identify resonances is 1 Hz. Frequency steps below and above 1 Hz were tried and concluded that 1 Hz is the optimum step to identify resonances accurately. The DS335 supplied by Stanford Research systems has a BNC (F) output, capable of outputting a 20 Vp-p sine wave into a high impedance load. Into low impedance load (50 Ohm) it can output 10 Vp-p. The load of the

sine wave generator is the input transducer. The transducer's input impedance was determined to be 1200 Ohm, using impedance analyser.

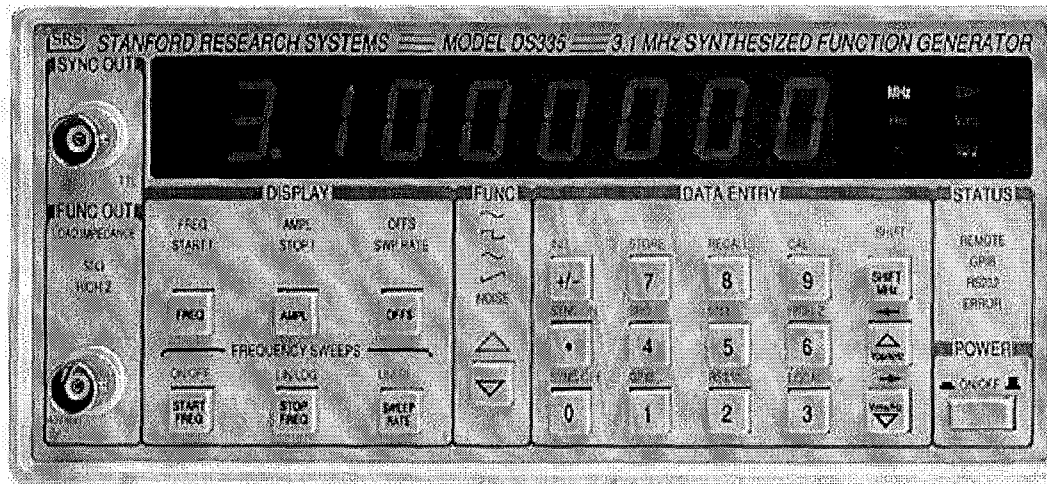


Figure 4.4 DS335 Function Generator

All instrument functions can be set and read via the GPIB (General Purpose Interface Bus) interface on the rear. A GPIB – USB adaptor supplied by National Instruments is used to control the parameters of DS335 with a software program written in C/C++.

4.1.3 HS3 – Analog Data Acquisition Device

The Handyscope HS3 shown in fig. 4.5 is a powerful computer controlled measuring instrument that consists of four measuring instruments: a Multimeter, an Oscilloscope, a Spectrum analyzer and a Transient recorder. An AWG (Arbitrary Waveform Generator) is also available. The Handyscope HS3 features a user selectable 12 bit, 14 bit or 16 bit resolution (14 bit effective, SNR 95 dB), 200 mV - 80 V full scale input range, 128 K samples record length per channel and a sampling frequency up to 25 MHz on both channels.

Connected to the fast USB 2.0, the Handyscope HS3 doesn't require an external power supply, therefore the Handyscope HS3 easily complies to "Plug in and measure". HS3 finds its application in this project as a spectrum analyser and an analog data acquisition device.

For analysing the spectrum of a bolt, the signal generator output of the HS3 is connected to the input transducer that is connected to the bolt. The output of the

receiving transducer is connected to the Channel 1 input of HS3. The sweep generator present in the HS3 signal generator is set to sweep over a bandwidth to excite the bolt. The response of the bolt is measured through the HS3 spectrum analyser.

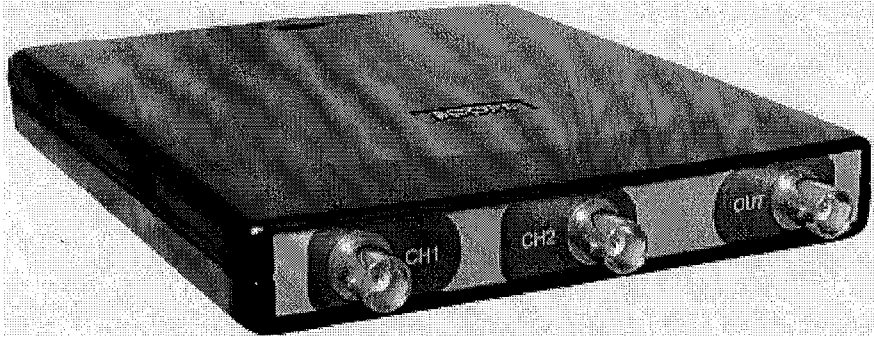


Figure 4.5 HS3 Measuring System

A. FFT

The spectrum analyser software uses a FFT algorithm to calculate the magnitude of the signal at each frequency outputted by the sweep generator and plots it. The number of samples over which the FFT is done can be set from 128 samples ($2^7 = 128$ samples, because the FFT is done on samples over multiples of 2) to 32768 samples (2^{15} samples). The spectrum analyser also allows for 'windowing' the signal so that spectral leakage does not occur while the FFT is done. A Blackman –Harris window is used for RUS because the window cuts off the edges of acquired signal to avoid signal discontinuities. While there is no particular windowing technique suited for all applications, Blackman – Harris windowing method is chosen since it gives best results for the particular signal on hand. Other windowing techniques were used to identify the most suitable method.

B. Sensitivity

The sensitivity of the ADC in the Handyscope ranges from 200 mV – 80 V. The sensitivity settings are important in two contexts. One is while considering the voltage of input signal coupled to the ADC from the output resonant inspection transducer. The sensitivity settings of the ADC should match the signal amplitude at its input. Two is when the HS3 is being operated as a data acquisition device for a sweep by DS335 signal generator, the sensitivity settings are matched

correctly to signal amplitude so as to reduce quantisation noise in the ADC. For example, for a resonance whose sine wave amplitude varies between -3V to +3V, the correct sensitivity setting is 4 V. Using 8V increases the quantisation levels and thereby increasing the probability of quantisation error, which degrades signal quality.

C. HS3 Signal Generator

When HS3 is used as a spectrum analyser, there is an in-built signal generator in HS3 capable of operating as a sweep generator in sync with the spectrum analyser. The sweep generator outputs a signal and does not output the next frequency signal until the spectrum analyser has computed an output by doing a FFT. It is capable of outputting 10 Vp-p into a high impedance load.

D. Miscellaneous Settings

The interpolation button can be used to smooth the spectrum in the spectrum analyser. A software gain can be applied on the spectrum to improve visibility. Cursors can be used to find values in the spectrum. The digital values of the spectrum can be stored in a data file for further processing.

4.1.4 Low noise voltage pre-amplifier (Model 5113)

The pre-amplifier supplied by Signal Recovery Inc., is a high performance, low noise voltage preamplifier [fig 4.6] with continuously adjustable gain and high, low or bandpass filtering. Its input can be configured for either single-ended or true differential operation with either DC or AC coupling, and its output will deliver up to 2Vp-p into a 50 Ohm load. All the principal instrument controls are operated via the three front-panel rotary knobs and a back-lit LCD display shows their present settings. The unit also includes a 'sleep' function whereby every source of digital noise is turned off after a predetermined interval by switching off the internal microprocessor. The unit can either be continuously line-powered from the supplied model PS0108 power supply, or be run from the internal rechargeable batteries.

If the signal of interest is limited to a single frequency or narrow range of frequencies, then the signal channel filters allow selective amplification of the signal. The filters can be switched out of use to give a flat frequency response. Typical settings of the voltage pre-amp are Gain: 500, A-B 1's for AC coupling,

30 kHz – 300 kHz bandpass filtering. Please see Annexe B for pre-amp specifications.

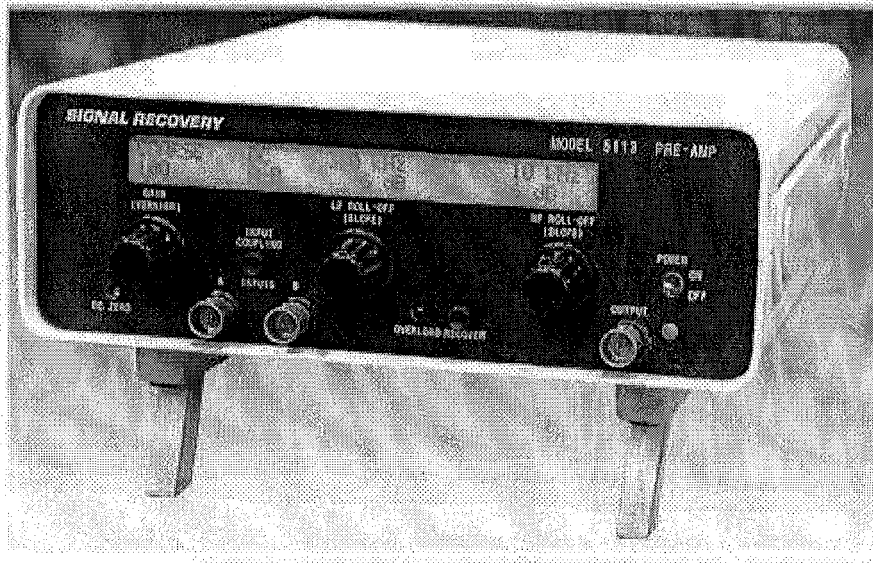


Fig 4.6 Model 5113 Low noise pre-amplifier

4.1.5 Load transducer & Thermocouple

A load transducer [fig 4.7], is used to calculate the load in a bolt, while testing in a test rig. The load transducer displays the load on the test bolt in KN, to be used in calibration data set. It sits in between two spacers that act as a flange in the test rig. The transducer is connected to a measurement box which gives the load read out.

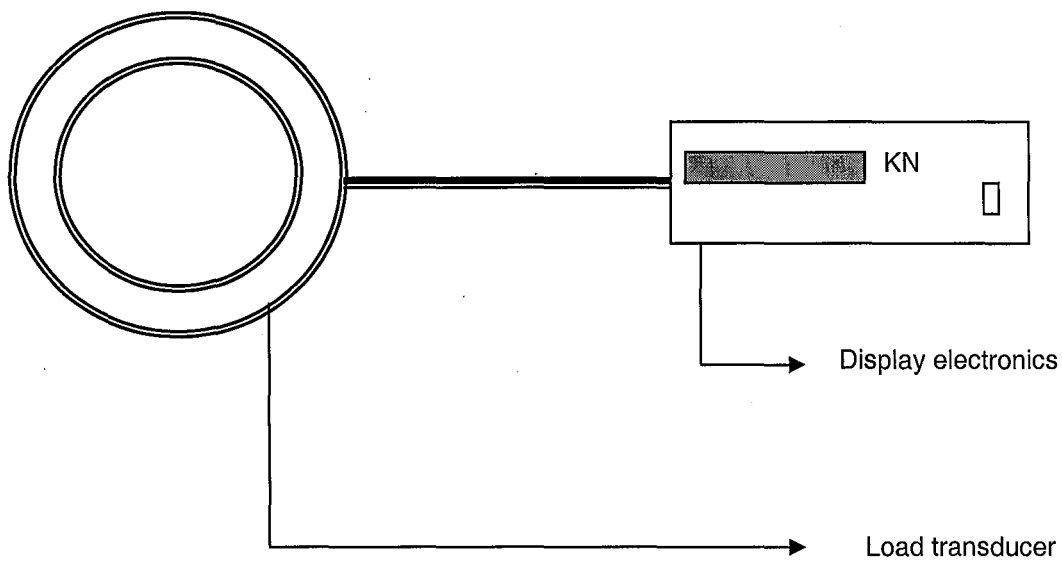


Fig 4.7 Load transducer (top view) and display system

A thermocouple is used for temperature measurements in degree Celsius. The thermocouples probe is taped onto the spacers in the test rig to measure the material temperature.

4.1.6 Connectors and cable assemblies

RG58 coaxial-cable assemblies with BNC plug connectors are used to connect the instruments together. The resonant inspection transducers have a SMA jack connector on their output. A SMA plug – BNC jack connectors are used to connect the transducers to sweep generator output and pre-amplifier input. The instruments are connected to each other as shown in figure 4.1.

4.2 Software Development:

Software development consists of two parts.

1. Writing custom software in C/C++ to control HS3 and DS335.
2. Analysis software in Matlab

4.2.1. Writing custom software in C/C++ to control HS3 and DS335:

The HS3 comes is supplied with instrument software supplied by the supplier. The instrument software from the supplier has much functionality and is targeted at widely varying applications of HS3. The HS3 signal generator cannot sweep in 1 Hz steps. Resonant inspection requires 1 Hz steps to identify resonances accurately. The typical operating frequency ranges for bolt resonant inspection is 30 kHz – 200 kHz. The maximum step resolution of HS3 signal generator is 3 Hz under 50 kHz signal frequency. For the signal frequencies above 50 kHz, the maximum step resolution of HS3 sweep generator is 6 Hz until 100 kHz and 15 Hz there after. Time to sweep over a 1 kHz bandwidth is 16 minutes in HS3 at 6 Hz resolution. Hence sweep times are significant in HS3 and inadequate to be used in resonant inspection. DS335 is a very high resolution swept-sine generator capable of stepping through a frequency band in μ Hz steps, which more than meets the requirements in terms of frequency step size.

The sweep times of DS335 are too fast. A 1 kHz bandwidth sweep takes less than 10 seconds, which is fast for the bolt to respond to the frequency. For a resonance to be setup in the bolt, the bolt needs to be excited for a sufficient amount of time. A very slow sweep is time consuming and practically unviable. HS3 lacks

high resolution frequency steps and flexibility. DS335 offers high resolution, but has fast sweep times. The solution is to use HS3 as a data acquisition device, and DS335 as a computer controlled sweep generator. Unlike HS3, DS335 doesn't come with instrument software. Instead, all its parameters can be set and controlled via GBIP interface using a custom C program. Hence a GBIP – USB adaptor is used to connect the DS335 to the USB port of laptop. HS3 can be plugged into another USB port of the laptop.

The software was written in MS Visual Studio environment using Microsoft C/C++ compiler. It interacts with the user through a MS-DOS console window. The software code can be found in the CD on the rear of the thesis. The program initializes the HS3 and DS335 using an appropriate code routine. The software provides two modes of operation, Mode 1. HS3 sweep and HS3 log, in which the Handyscope is used as a sweep generator and data logger. The program does not compute a FFT; instead it calculates the rms (root mean square) values of the bolt response signal. Mode 2 is DS335 sweep and HS3 log. In this mode, DS335 is used as the sweep generator and HS3 is used as data logger. Mode 1 is used when rms values of the signal are needed rather than FFT values which are provided by the supplier software. Mode 2 is the main operating mode in RUS. Mode 2 is capable of making the DS335 sweep in 1, 10, 100, 1000 Hz steps.

4.2.2 HS3 Data Logger:

The HS3 is controlled through a dll (Dynamic Link Library) file 'hs3.dll'. The dll file contains all low level declarations for the function parameters. The USB connected HS3 can be controlled by sending and receiving values through functions that are defined in the C file ('tiepie.c'), which is linked to the dll file. Functions are defined for controlling all of the HS3 functions. The ADC/DAC forms the core of HS3, which can be used for data acquisition and signal generation respectively.

A very fast sweep fails to properly excite and setup resonances in the bolt. To adequately excite the bolt, an idling time of not less than 0.4 seconds/Hz is required. This was calculated by sweeping the bolt with slow and fast step times, before arriving at a nominal value. A number of parameters are set in the HS3 to make it act as a data logger.

The HS3 is initialised by connecting to the instrument using a manufacturer supplied instrument address (InitInstrument (0x308)). The following parameters are set in the HS3.

a. Sampling frequency:

25 MHz is set as sampling frequency using SetSampleFrequency(). The frequency range in which the Acoustic Resonant Spectroscopy instrument operates is less than 200 kHz. Nyquist frequency for the signal would be 400 kHz. To pick up resonances accurately, a RMS measurement is done over the whole acquired signal from the receiving transducer. Since the FFT is not used, direct identification of frequency content of the signal is of no particular interest. However, the frequency content of the signal can be identified alternatively by time domain analysis. The start and stop frequencies of a sweep are known. The number of samples (record length) of the acquired signal is known. For e.g. a sweep in 10 Hz steps to identify resonances between 30000 Hz and 32000 Hz consists of 200 frequency steps. The data logger record length is set to 2000.

Each frequency put out by the sweep generator is converted to an equivalent acoustic wave by the input transducer that is in contact with the bolt. The output transducer converts any acoustic vibrations it senses in the bolt into an electrical equivalent, which is then amplified by the pre-amp and fed to the data logger. The data logger digitises the signal and then allows the signal generator to output the next frequency. For this particular example, the data logger stores the bolt response for 200 frequency points, with each signal frequency being represented by 2000 samples, which gives a 200000 sample data file. The frequency points in the data file can be calculated using the formula

$$f = \text{start frequency} + (\text{total samples} / \text{sample point}).$$

The rms of each signal frequency is calculated, which gives 200 rms values. The 200 rms values are plotted against 200 frequency points to obtain a frequency spectrum of the acquired data. Since rms is calculated for sine waves, a signal with a very good resolution is required. Hence the maximum sampling frequency of 25 MHz is used to recover signal information. This is in contrast with using FFT, where it is enough to sample the signal at Nyquist rate to recover the frequency content of the signal.

b. Record Length

The record length specifies the length of the acquired signal. It is set to 1000, which is enough to acquire a few cycles of sine wave at 30000 Hz (start of operating range of the instrument). For the same record length (1000), the number of cycles acquired is typically 3 at 30000 Hz and 53 at 100000 Hz.

c. Resolution

Resolution is a measure of quantisation steps. A 12-bit resolution provides 2^{12} quantisation steps. For a 2 V input signal (maximum output of pre-amp), a 12 bit resolution gives 4096 quantisation levels, so the ADC can divide a 2 V signal into 4096 values. Increasing the resolution resolves the signal better.

d. Sensitivity

Sensitivity is set to 8 V. Given that the maximum output of the pre-amp is 2 V, a 8 V sensitivity scales the signal to ± 8 V.

e. Measurement channel

Channel 1 (CH1) of the data logger is used to acquisition.

4.2.3 DS335 Signal generator

The signal generator is controlled by the program via a GPIB adaptor. The DS335 is controlled in a loop along with the data logger by the same program. The program sets a frequency output in the DS335 and acquires the response from bolt through the data logger. DS335 is initialised by using GPIB command `ibdev()`. Any initialisation errors are checked for using the command `ibsta()`. The parameters that are set in the DS335 are frequency and signal voltage.

a. Frequency

The program sets a user defined start frequency and sweeps until the stop frequency given by the user is reached. A sweep step-size is also specified by the user. The program can make the DS335 sweep in 3 step-sizes – 1, 10, and 100. The GPIB command for setting the frequency in DS335 is `ibwrt(Dev,cmd,strlen(cmd))`.

`ibwrt` – GPIB command for setting the instrument parameter

Dev – Device ID.

Cmd – String Command. Format – FREQ1234567, where 1234567 is the frequency to be set.

b. Voltage

DS335 can output a signal of 20 Vp-p into a high impedance load. The transducer impedance is 1200 Ohm. The program sets DS335 to output 20 Vp-p.

c. Frequency count function

The frequency count function increments the current frequency by the specified step size and returns the string to the sweep routine. Sweep routine sets the new frequency.

4.3 Description of the software code:

Software code is divided into two sections. The instrument control software written in C/C++ and the data analysis software. Instrument control software sets various instrument parameters, controls the instrument, communicates with the user to obtain inputs and stores data in files which are then used by the MATLAB data analysis program.

a. Instrument control software.

The project file HPResonantInspection, was developed and tested in MS Visual Studio 6 package. The fully annotated software code is attached in Annexe A. User manual of the software is attached in Annexe B.

b. Data Analysis software

It consists of three parts. The program HPDataAnalysis processes the data file and finds resonances in the data file. The program HPRefineSearch stores the sweep bandwidth values in a text file. The values stored are the bandwidths that the HPDataAnalysis would sweep next time it is run. The program LoadPrediction is a multiple regression algorithm that predicts the stress based on the values of input resonances and their fit to the data set. The

annotated software codes are attached in Annexe A and the user manual in Annexe B contains instructions to operate the MATLAB software.

CHAPTER 5

TEST METHODOLOGY

In this section, outlines of experiments that are needed to study the resonances in a bolt are discussed. Results of experiments are then used to calibrate bolts and calculate stress.

5.1 Discussion

In the initial stages of the project, a laboratory sweep generator, a pair of immersion transducers and an oscilloscope was used to study the resonances in the bolt. As shown in figure 4.1., a B7 bolt was excited by the immersion transducer and analog sweep generator. An oscilloscope connected to the receiving transducer picked up the signal. The resonances of the unstressed bolt were seen as progressive increases and decreases in the sine wave amplitude. This proved the occurrence of resonances in the bolt. The immersion transducers were used because they were readily available in the laboratory. Immersion transducers are used in under-water ultrasonics and they are highly damped transducers. Hence immersion transducers are different from the ultrasonic transducers used in pulse-echo measurements. The immersion transducers were characterised using an impedance analyser and its resistance was 600 Ohm and capacitance 120 uF.

The final instrument was a product of continuous development. Each stage of experiments provided feedback for enhancing the instrument. A data logger capable of operating both as a sweep generator and spectrum analyser was procured. It is the Handyscope 3. The HS3 replaced the laboratory sweep generator and the oscilloscope. Instead of the sine wave amplitudes that were measured on the oscilloscope, HS3 provided a full frequency spectrum view in a given bandwidth.

The HS3 together with the immersion transducers were used to test the B7 bolts of 1' 1/8'' diameter and 110 mm length. This was the demonstration part of the

project. The aim was to calculate stress in a single bolt in a load cell. The bolt was stressed to various levels from 140 KN to 220 KN and the resonances were recorded. Those resonances were used to predict stress in the single bolt. The magnitude of shift in the resonances for a 20 KN increase in stress was in the order of 30 Hz to 100 Hz. For those resonances which had a 30 Hz shift, the accuracy of the HS3 was a concern. The step frequency size of the HS3 sweep generator is 24 Hz, which would mostly mask the 30 Hz shift of the resonances. The sweep times of the HS3 were also considerable. A 100 kHz sweep with a 24 Hz frequency step size takes 10 minutes to sweep. If there are 4 resonances in a bandwidth of 30 kHz to 100 kHz, for e.g. 2 resonances between 30 kHz and 40 kHz, 1 resonance between 45 kHz and 50 kHz and 1 resonance in between 97 kHz and 99 kHz, the HS3 sweeps from 30 kHz to 100 kHz to pick all the resonances. HS3 could not sweep in a number of bandwidths but only can sweep over a single bandwidth. The DS335 sweep generator replaced the HS3. HS3 was then used only as a data logger.

Successfully calibrating a single bolt was a step forward towards calibrating a group of 10 bolts in the load cell and predicting stress in any of the 10 bolts. For the tests with 10 bolts, a pre-amplifier was used at the receiving end to boost the signal. The group of 10 B7 bolts were 160 mm long with 1' 1/8'' diameter. Since the group was 50 mm longer than the bolt used in demonstration stage, received signal amplitudes were in the order of 2 mV to 20 mV. This amplitude level did not fit with the data logger signal input requirements, hence 5113 pre-amp was procured. The pre-amp band pass filter was capable of blocking signal interference and noise.

A project plan shown in figure 5.1 (a) and short term work plan as shown in figure 5.1 (b), was followed to demonstrate the concept for a single bolt first and then for a group of bolts.

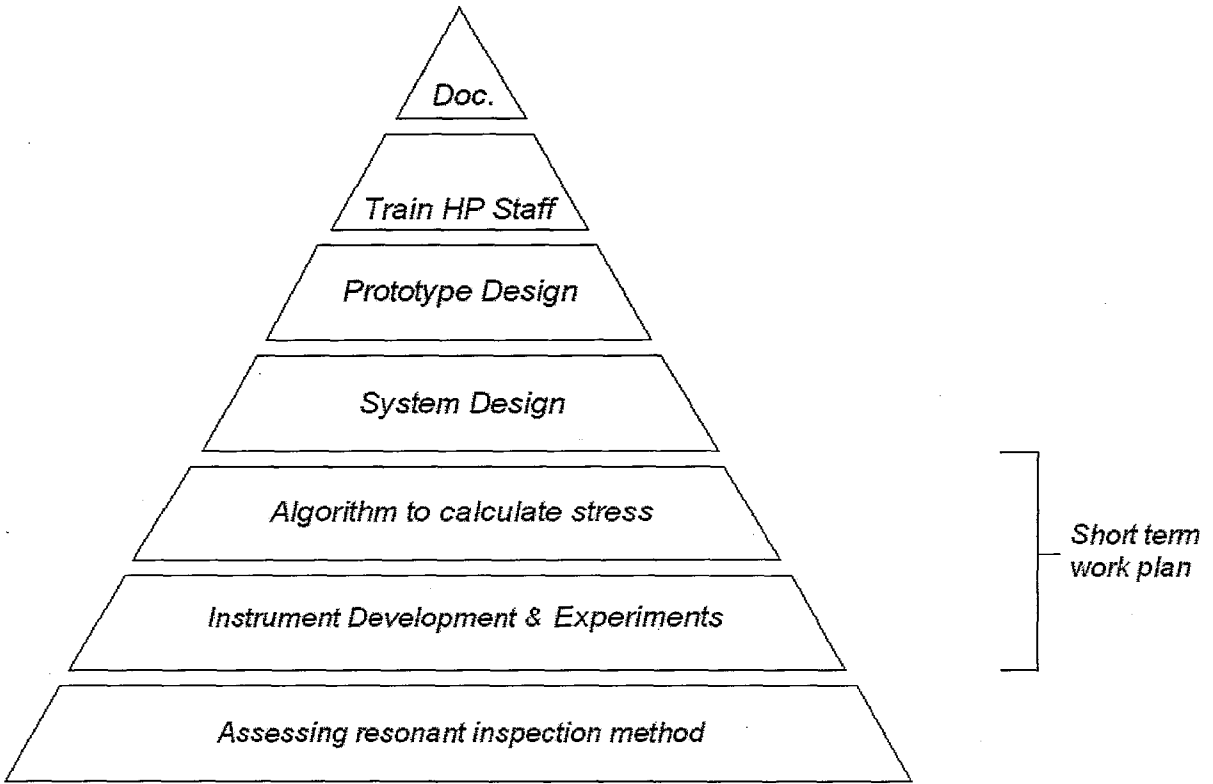


Figure 5.1(a). Project Plan

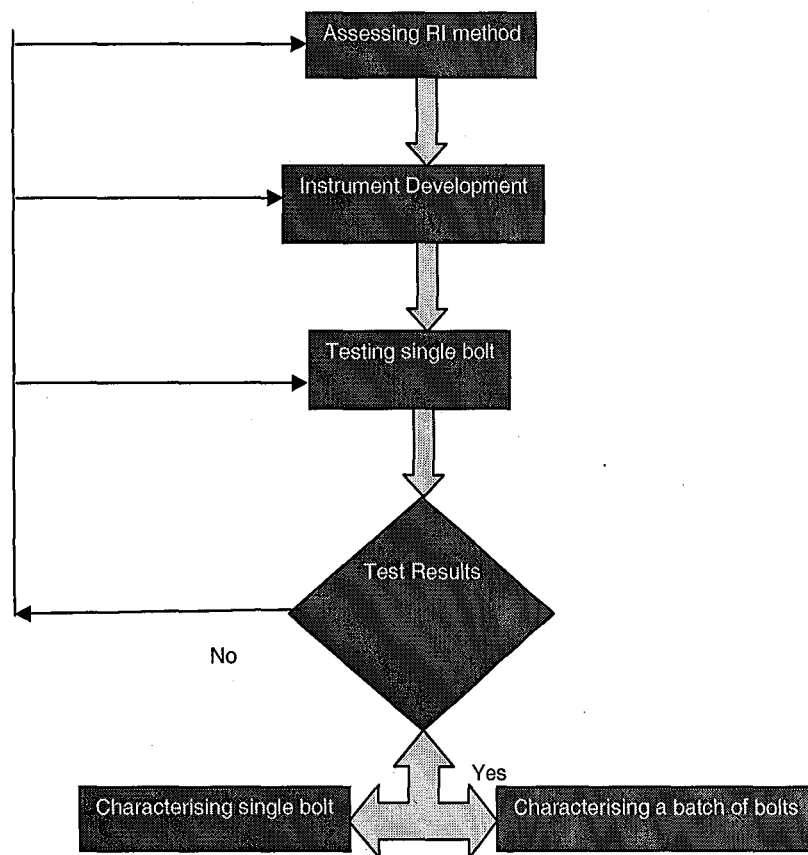


Figure 5.1(b). Short term work plan

5.2 Testing a single bolt

A bolt tensioning device supplied by Hedley Purvis Ltd was used to load the bolt to various stress levels. A load cell measures the load in the bolt in Newton. A detailed view of test rig is shown in figure 5.2 (a).

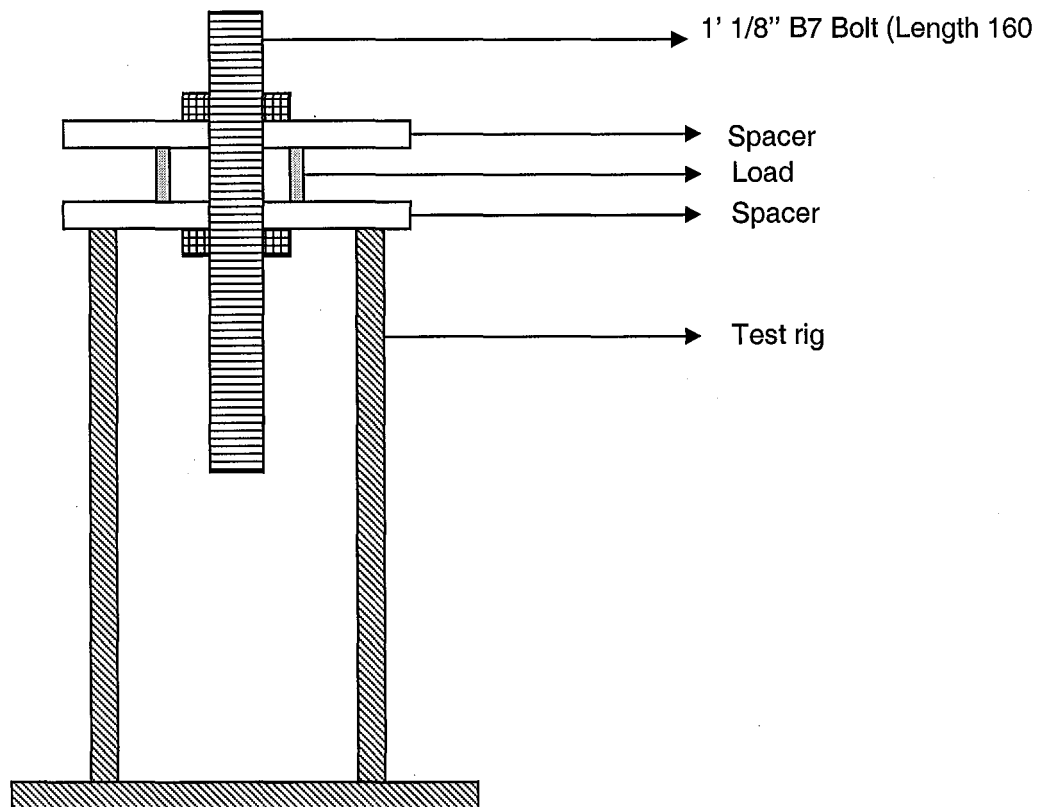


Figure 5.2(a). Test Rig with a bolt.

The instruments and 1' 1/8" 160 mm B7 bolt are setup as shown below in the figure 5.2 (b).

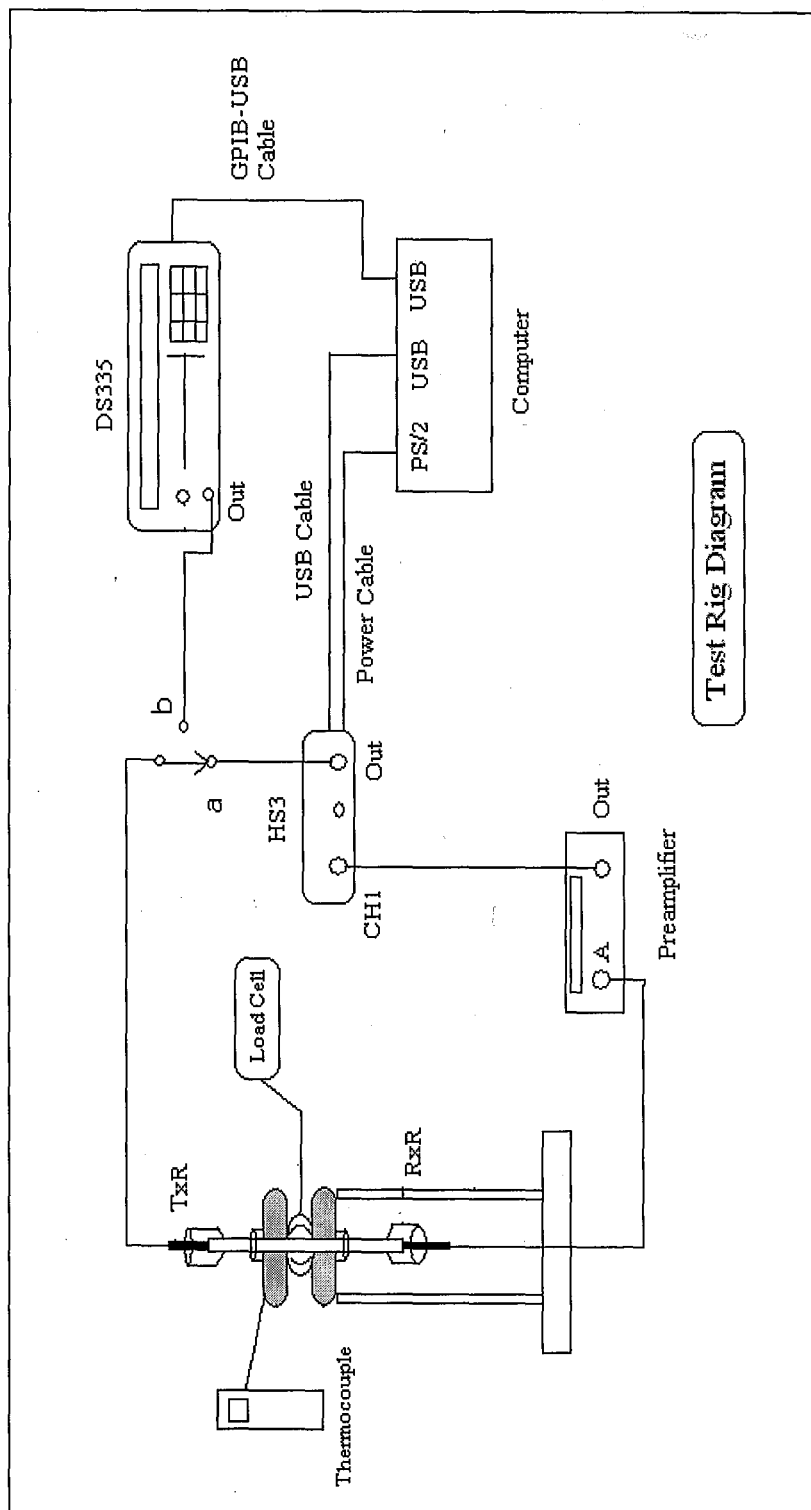


Figure 5.2(b). Instrument setup and test rig.

5.3 Test procedure:

- a. Load the bolt to a working stress level
- b. Look for resonances in the bolt by sweeping over frequency bandwidths
- c. Identify good peaks and note down their frequencies
- d. Increase (or decrease) the bolt stress by 20 KN
- e. Trace the movement of the identified good peaks and note down the new (shifted) frequency points. Calculate the magnitude of shifts due to 20 KN change in stress
- f. Increase the bolt stress again by 20 KN. Note down the new frequency points and magnitude of shift of the peaks.
- g. By analysing resonance data obtained by carrying out above mentioned steps, choose useful peaks from good peaks. Those peaks are used to predict stress after building a database of resonance information, stress, bolt length and temperature.

5.4 Description of test procedure:

The bolt is loaded using a bolt tensioner. Bolt load is instantly displayed by the load cell measurement system. The working stress range of the bolt type under test was obtained from Hedley Purvis technical support team. For the bolt type under test, the working range is between 180 KN to 220 KN. The bolt is initially loaded to 180 KN. The instruments and connections are setup as shown in figure 5.2(b). A frequency sweep is done from DC – 100 kHz using HS3 sweep generator.

Peaks in the frequency spectrum are noted down. By zooming in on the peaks, the symmetry of each peak can be examined. Peaks with good symmetry and high relative amplitude are usually good peaks. This is known by practice. The lower cut-off of the pre-amp band pass filter is set to 30 kHz and the upper cut-off is set to 100 kHz. This helps to reduce the noise from audible sources in an industrial environment, where tests were carried out.

The load is increased by 20 KN and a frequency sweep is done over a bandwidth of 30 kHz – 100 kHz. The frequency spectrum is examined for the shifts in the peaks that were noted down in the previous step. Since change in stress affects

resonance, some of the resonances shift and some do not. The shift is usually positive. This is discussed in the experiments section.

CHAPTER 6

EXPERIMENTS

This section describes the experimental process that is used to calculate stress in bolts. The experiments are carried out using the instruments setup test methodology described in chapter 5.

6.1 Bolt Parameters

All the bolts used in experiments follow these specifications.

Bolt Type: B7

Length: 160 mm

Diameter: 1' 1/8''

Temperature: Room temperature varying from 17 Celsius to 21 Celsius

Top extension length: 90 mm above the test rig surface

Load on bolt: Varying from 0 KN to 240 KN

The natural variation of resonant frequencies within bolts of a given nominal specification has been characterised. However, the parameters which cause this required further investigation. In this study, the variation in the speed of sound and Young's modulus are characterised [13].

6.2 Speed of sound

The work described in this section was carried out by R Handford at Durham University [13].

6.2.1 Unstressed bolt

Assuming the material is linear the following equation applies

$$f = v / \lambda(1)$$

f = frequency Hz

v = speed of sound ms^{-1}

λ = wavelength m (this is dependent on length of bolt and number of the harmonic)

To find the speed of sound, pulses were transmitted down the bolt and the times taken for them to hit the backwall and return were measured. This was carried out seven times for ten different bolts.

The bolt lengths at zero loads were measured using a vernier, which is accurate to $1/10^{\text{th}}$ of a millimetre. Time-of-flight measurements were carried out on each bolt and the velocity was calculated using the formula $v = \text{distance} / \text{time}$. The results showed the average value for the speed of sound was 5917m/s with a standard deviation of 2.7m/s . This experiment was done to account for any natural variations in speed of sound in an unstressed bolt. When resonance measurements were carried out in the group of 10 unstressed, similar bolts, the standard deviation across the resonances were $\pm 20 \text{ Hz}$. The time-of-flight experiment is an attempt to characterise the variation in speed of sound in the same group of 10 unstressed, similar bolts. An attempt was made to relate the time domain data to the frequency domain resonance data. Theoretical resonant frequencies calculated using time-of-flight measurements have standard deviation of $\pm 16 \text{ Hz}$ across the 10 bolts. This compares to the $\pm 20 \text{ Hz}$ obtained by resonant inspection. While both the pulse-echo and resonant tests indicate there are natural variations in bolts at zero load the variation is $\pm 20 \text{ Hz}$, which has minimal effect on the actual bolt testing described in Section 6.3

6.2.2 Tensioned bolt

Experiments were carried out on one randomly selected bolt to look at how the speed of sound varied with stress. To obtain accurate values for the speed it was also necessary to measure the strain of the bolt, these values were then used to provide a stress strain graph as in Figure 6.2 (a). This was done to give confidence in the velocity graph.

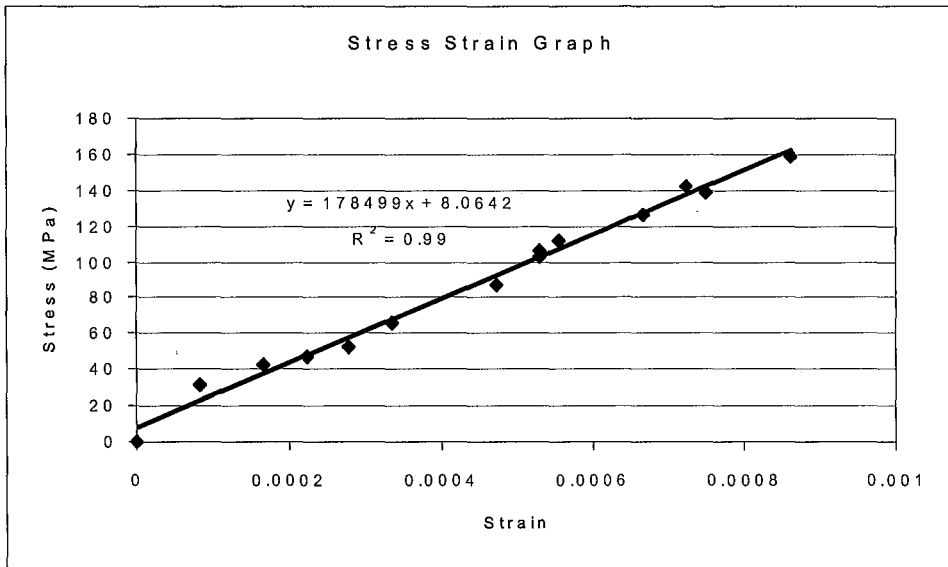


Figure 6.2(a) Stress- Strain Graph

The graph is linear as expected and give a Young's Modulus of about 180Gpa, which is similar to that quoted for steel, however this is not necessarily an accurate value as the bolt area was estimated and it assumes the whole bolt length is being stressed.

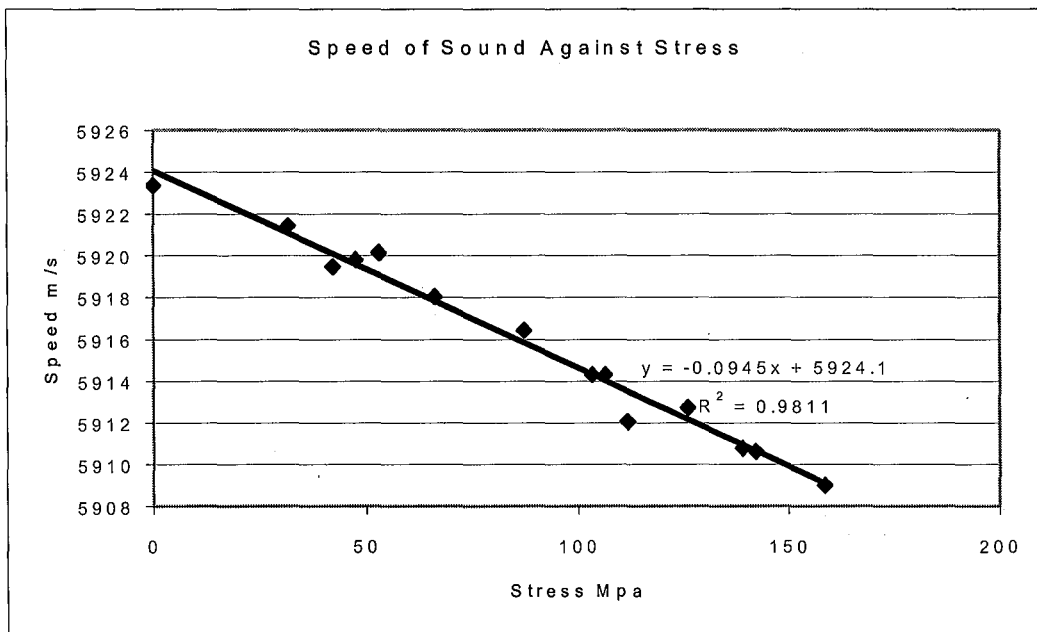


Figure 6.2(b) Variation of speed of sound with stresses.

This graph in figure 6.2 (b) shows how the speed of sound varies as the stress applied to the bolt is increased. It shows that as the load is increased the speed of sound decreases.

The fact that the length of the bolt increases and that the speed of sound decreases as the bolt is stretched despite an increase in the frequencies of the resonant peaks shows that the formula $f = v / \lambda$ applies only to phase velocity and not the group velocity which is measured by the ultrasonic instrument. That could explain why there are positive shifts in resonances in real-time when a bolt is stressed, in spite of the equation $f = v / \lambda$ producing negative shifts for increase in bolt length due to stress. However, the exact causes need to be investigated further and at this stage it was decided to take the project further by considering the fact that 99% of the observed resonances had a positive shift with an increase in stress and 1% had random positive and negative shifts with increase in stress.

Parameters such as bolt length, diameter and extension above the spacers i.e. bolt position, temperature are constant or nearly the same in all test conditions. The only varying parameter is stress. Hence the shifts in resonances relate to stress. The shifts are repeatable and hence stress can be predicted with reasonably good accuracy. An experiment to measure stress in a single bolt is discussed in the following section.

6.3. Experiments with single bolt

The bolt is loaded at 0 KN. A swept frequency analysis is carried out and a frequency spectrum of the bolt response is obtained. The following figure 6.3 (a) shows the bolt resonances at zero stress.

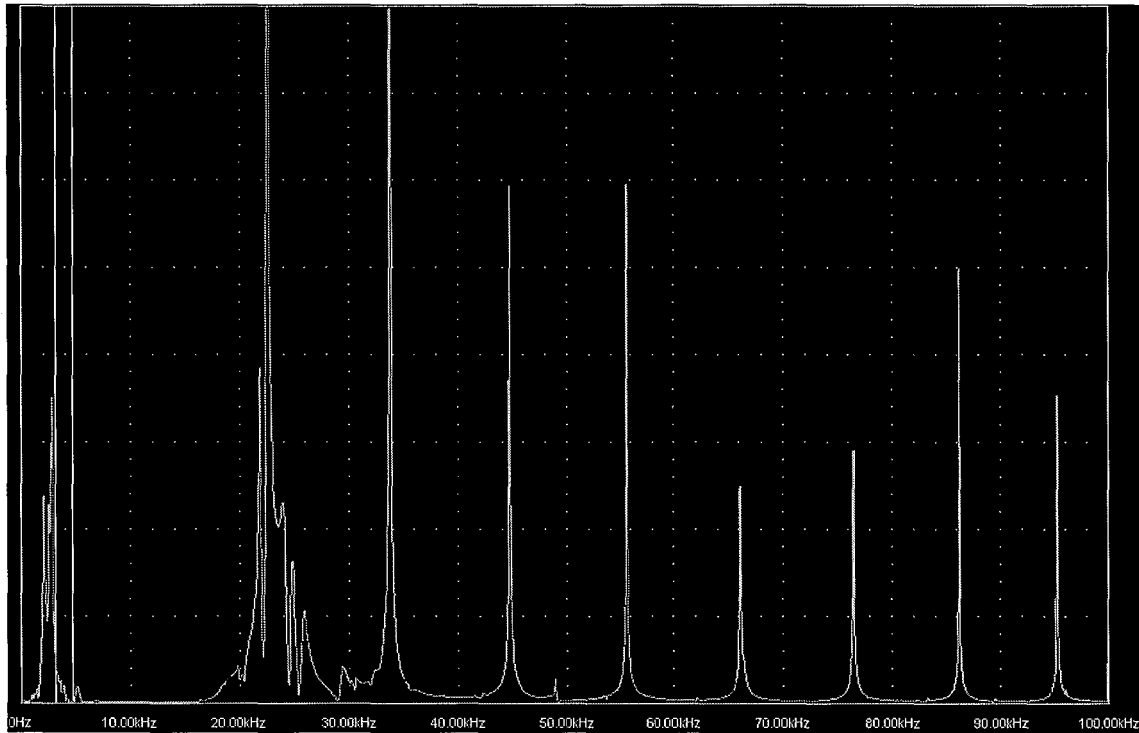


Figure 6.3(a) Resonance spectrum of a B7 bolt at 0 KN

The resonances were compared with the theoretical resonances obtained by using the formula $f = v / \lambda$. The results are as follows in the graph 6.3 (b).

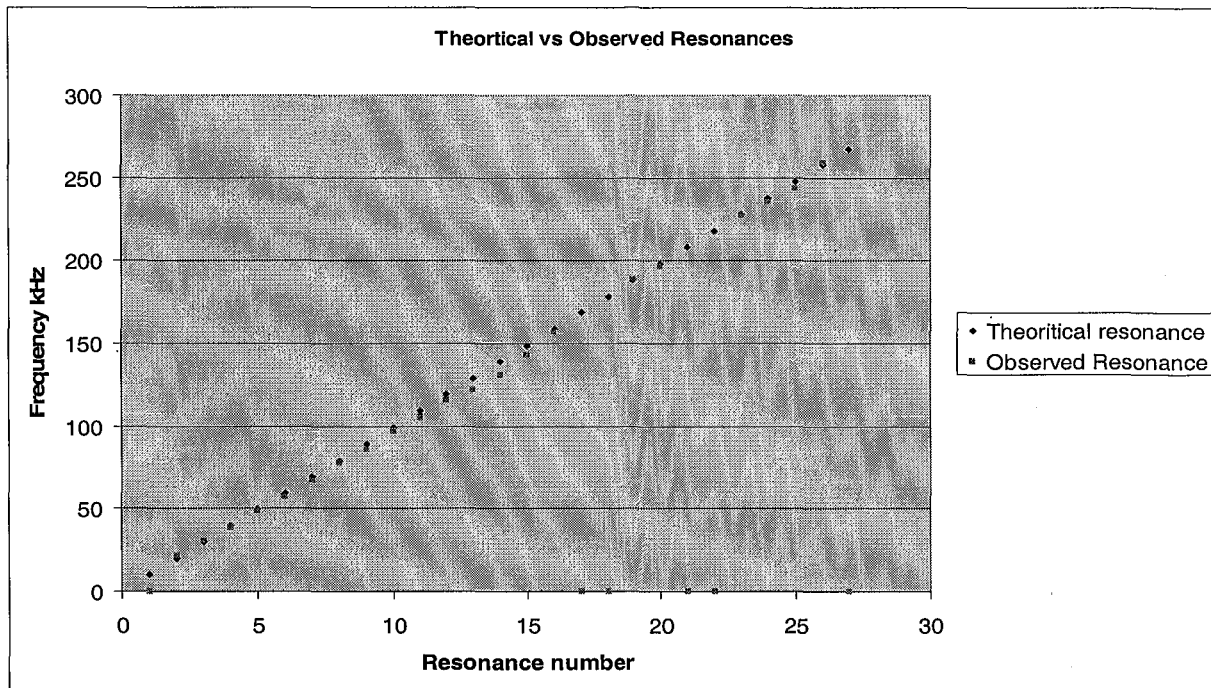


Table 6.3 (b) Comparison of theoretical and observed resonances.

The theoretical and observed resonances do not match fully. The scope of this project is to develop a working instrument to measure stress in bolts, hence only minimal work has been done on the background theory on the resonances in bolt. However the core concept of the project i.e. shifts in resonances due to change in stress has been studied and verified.

The frequency spectrum of the bolt at 0 KN load and 100 KN load are compared in the figure 6.3 (c) to show the shift in resonances due to increase in stress. The resonances at 0 KN load are characterised by relatively high amplitudes and linear occurrence. The resonances at 100 KN are of lesser amplitude and shifted to the right from their position at 0 KN. Increase in the stress causes peak splits and non-linear occurrences of resonance. But the obtained spectrum is repeatable in standard test conditions. Attenuation of resonances leads to the use of low noise voltage pre-amp at the receiving end. It can also be noted that the magnitude of shift for each resonance frequency is not uniform. Hence some resonances shift more than the other resonances. Some resonances have very negligible shift or in some instances do not shift. The mapping of resonances to the stress level of the bolt is important to predict stress.

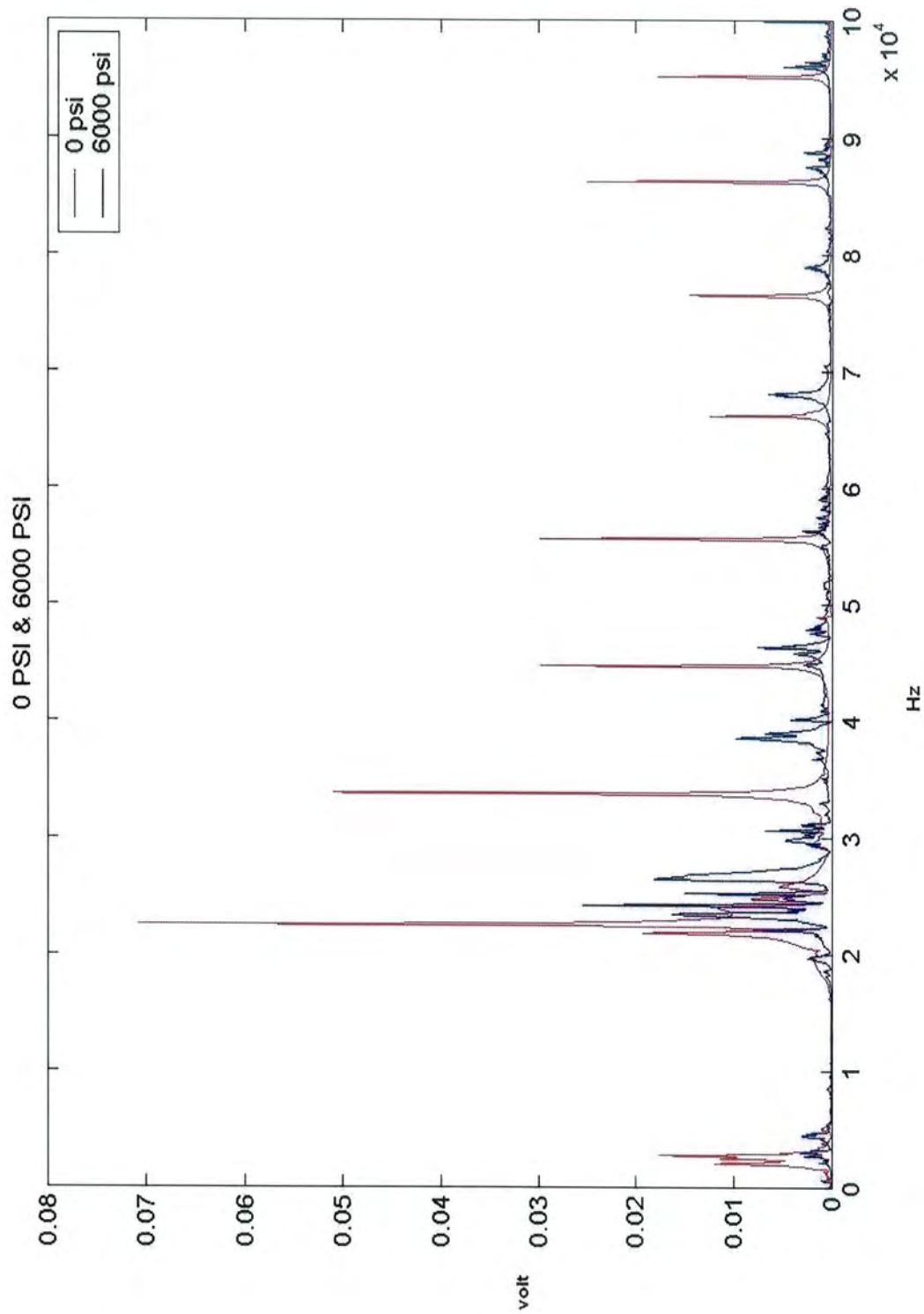


Figure 6.3 (c) Comparing resonances at 0 KN and 100 KN stress.

According to the confidence level in each peak, some of the peaks are selected as indicators of stress in the bolt. The key to confidence level in a peak is its magnitude of shift due to increase in stress and also its repeatability. If a peak has shifts in the order of 100 to 300 Hz and if it occurs at ± 50 Hz every time the bolt is stressed to the same level, the peak can be selected as an indicator of stress. Another factor is peak splitting. If a peak splits at a certain stress level in working range of the bolt, the peak has less possibility of being used as stress indicator due to the inaccuracies that the peak split adds while determining its position, which is in turn used to predict stress.

The preceding discussion establishes the presence of resonances in the bolt under test and validates the shifts in resonances when the bolt is stressed. It also proves that the instrument used has the capability to successfully measure resonances. The shifts can be related back to the stress in the bolt. However there are certain other factors that influence the outcome of stress prediction. They are temperature, position of the bolt, length of the bolt, relaxation effect on the bolt immediately after tightening, time period of excitation at each frequency and effect of transducer placement on the ends of the bolt. These factors can influence the resonances in the bolt and hence their effects are studied with an aim of compensating for variations caused by them.

a. Effect of temperature:

Temperature affects material properties of steel. Sound travels faster in a hot medium and slower in a cold medium. Temperature effects on resonances have been extensively studied [6]. An increase in temperature causes a backward shift in the resonances. A decrease causes a forward shift. Resonance shifts are inversely proportional to temperature. It is important to characterise the variations in resonances due to temperature changes because a significant increase in temperature can offset the effect of stress on the resonances.

Bolt extension(mm)	Temperature(C)	Load(KN)	F1(Hz)	F2(Hz)	F3(Hz)	F4(Hz)	F5(Hz)	F6(Hz)
109	17.7	204	33330	35010	35390	42850	44480	99510
109	17.9	204	33330	35020	35390	42850	44480	99510
109	18	204	33330	35020	35390	42830	44480	99510
109	18.3	204	33320	35020	35380	42830	44480	99490
109	18.8	204	33320	35010	35380	42830	44470	99490
109	19	204	33310	35010	35370	42820	44460	99480
109	19.2	204	33310	35010	35370	42820	44460	99480
109	19.8	204	33310	35020	35370	42820	44460	99480

Table 6.3 (d) Resonance variations with temperature

The table 6.3 (d) contains resonance data taken at a constant load of 204 KN, but at varying temperatures from 17.7 C to 19.8, indicative of typical room temperature levels. The average shift of resonances for a 2 C increase in temperature is - 20 Hz or + 20 Hz for a 2 C decrease in temperature. The resonances are plotted against temperature changes to study the variations caused by temperature change.

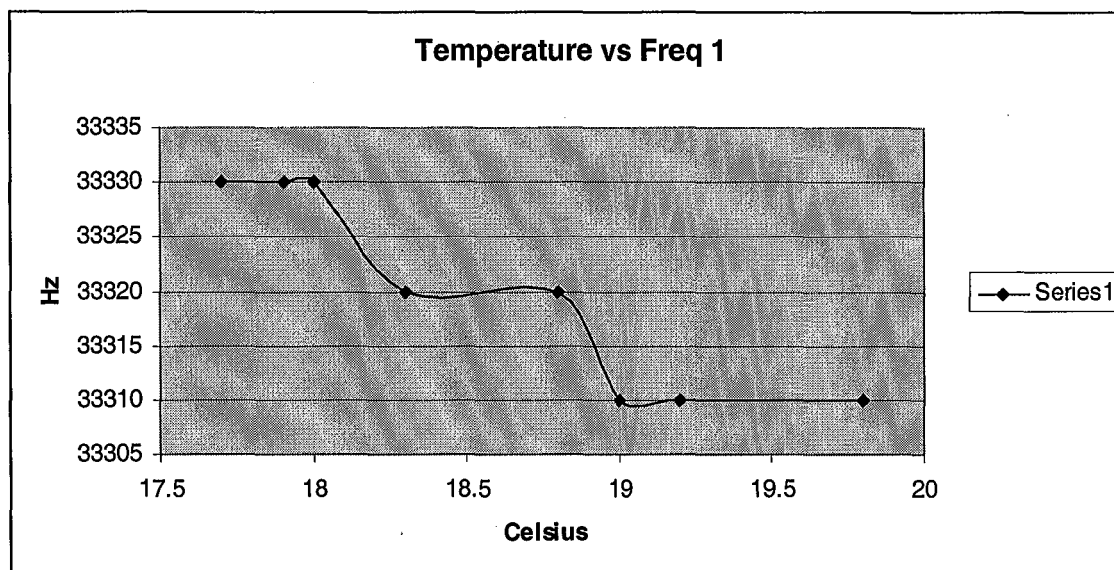


Figure 6.3(e) Change in resonant frequency 1 with temperatures

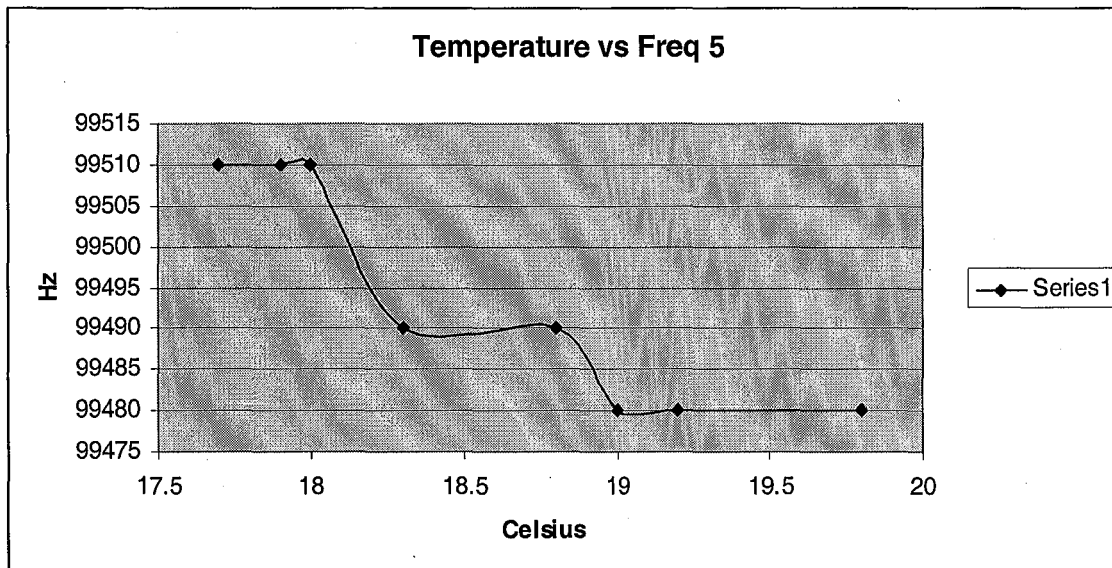


Figure 6.3(f) Change in resonant frequency 5 with temperatures

The graphs 6.3 (e) and 6.3 (f) show an inversely proportional relationship between resonance and temperature. A 2 C change in temperature causes an average 20 Hz shift, which isn't a significant shift when compared to an average 100 – 200 Hz shift caused by increase in stress by 30 KN. So the temperature should change by 10 C to offset the effect of 30 KN increase in stress. A 10 C change is not possible in lab conditions. Due to lack of an environmental chamber to study the resonances at higher and lower temperatures, characterising temperature variations is left at this point. It is stressed that, 2 – 3 C changes in room temperature would not affect the stress prediction significantly.

b. Length of the bolt

The length of the bolt affects resonances. However in a typical real-time flange where this instrument would find its use, all the bolts are within ± 0.5 mm length. The bolts that were used for this project all had their length variations within ± 0.5 mm. The lengths of the 10 bolts used in this project and their resonances at zero stress are shown in the following table 6.3 (g).

BOLT NO	F1 Hz	F2 Hz	F3 Hz	F4 Hz	F5 Hz	F6 Hz	F7 Hz	F8 Hz	F9 Hz	Length mm
1	34031	40654	47233	53845	60317	66698	72940	79019	84895	160.54
2	34049	40757	47405	53987	60489	66886	73144	79237	85136	159.04
3	34084	40788	47423	54027	60518	66918	73180	79275	85170	159.10
4	34201	40793	47514	54099	60579	66966	73217	79301	85209	159.04
5	34103	40791	47431	54042	60543	66953	73211	79305	85203	159.16
6	34252	40795	47474	54121	60613	66999	73254	79348	85244	159.14
7	34113	40779	47443	54059	60557	66963	73223	79322	85224	159.22
8	34182	40793	47469	54089	60581	66983	73237	79332	85219	159.16
9	34164	40831	47421	54065	60563	66964	73227	79321	85221	159.18
10	34166	40826	47430	54064	60554	66964	73216	79308	85200	159.40

Table 6.3(g) Resonances of group of 10 bolts at 0 stress, with lengths ± 0.5 mm

From the table 6.3(g), at 0 KN, the standard deviation across all resonances average out to 20 Hz. Hence a length variation of ± 0.5 mm among the 10 bolts causes a deviation of 20 Hz, which is less compared to the average resonance shifts of 150 Hz for a 30 KN change in load.

c. Position of bolt

The position of bolt is its extension lengths on the either side of the spacers. The distance between two spacers (which simulate a flange), is constant. At a given stress, the resonances are repeatable only if the extension position of the bolt remains the same. A change in bolt extension position effects a change in resonances. To study the variations caused by bolt extension position, the load is kept constant and extension position of the bolt is varied. The resonances are measured and a method of compensation for variation in extension position is identified.

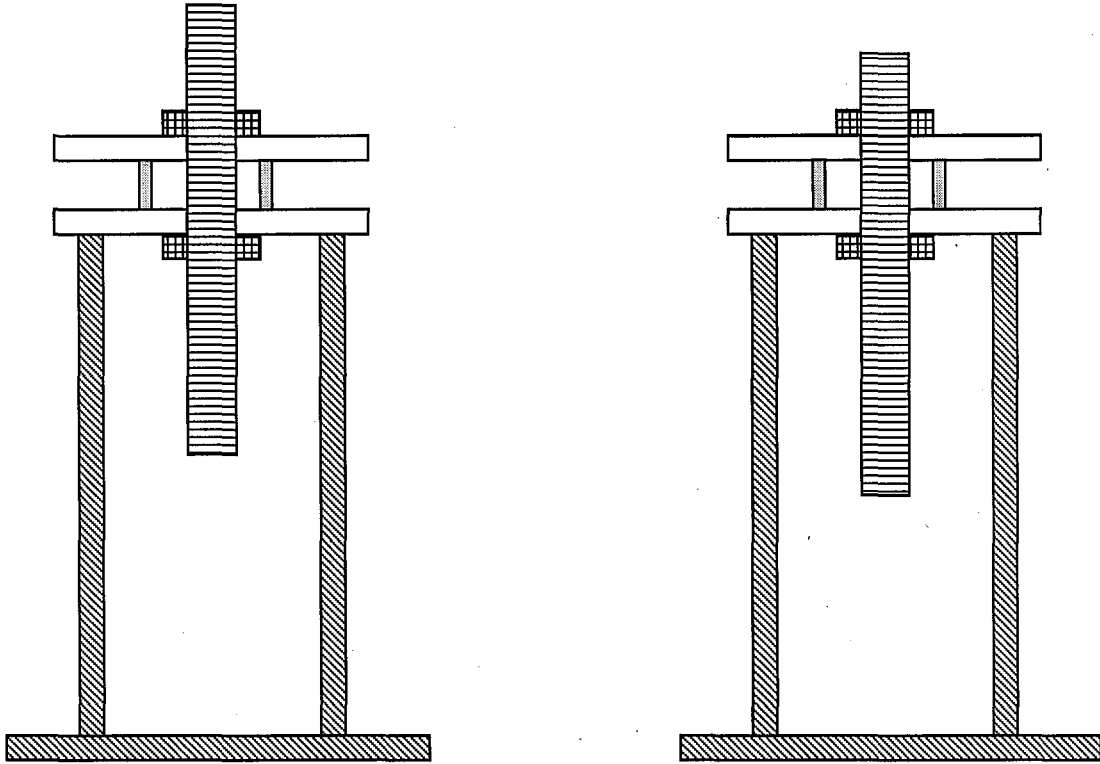


Figure 6.3(h) Bolt extension on left rig is different from the extension of right.

Top extension mm	F1 Hz	F2 Hz	F3 Hz	F4 Hz	F5 Hz
109	33200	34980	35330	44340	98970
115	32960	34980	35320	44270	99180
120	32740	34680	35350	44400	98610
125	32430	34530	35360	44080	98720
130	32020	34310	35410	43910	98660
135	31380	34000	35300	44040	99220
140	31380	34220	35460	43870	98550

Table 6.3(i) Load 172 KN

Top extension mm	F1 Hz	F2 Hz	F3 Hz	F4 Hz	F5 Hz
109	33330	35040	35360	99590	44500
115	32970	34890	35350	99230	44340
120	32650	34700	35350	99080	44540
125	32450	34570	35410	98840	44200
130	31930	34430	35430	99420	44410
135	31530	34500	35440	99350	45810
140	31450	34300	35450	98880	44380

Table 6.3(j) Load 200 KN

The tables 6.3 (h) and 6.3 (i) consist of resonances of the bolt at a given load but at different top extension lengths. The extension position starts at 109 mm. The length of the bolt on the either side of the spacer is equal when the top and bottom extension is 109 mm. The bolt is initially adjusted so that its length on the either side of the spacer is the same and then for each subsequent measurement the length of the bolt on the top of the spacer is increased gradually. The variations in the resonances due to extension position are plotted at 3 different loads, 150 KN (table not given), 172 KN, 200 KN.

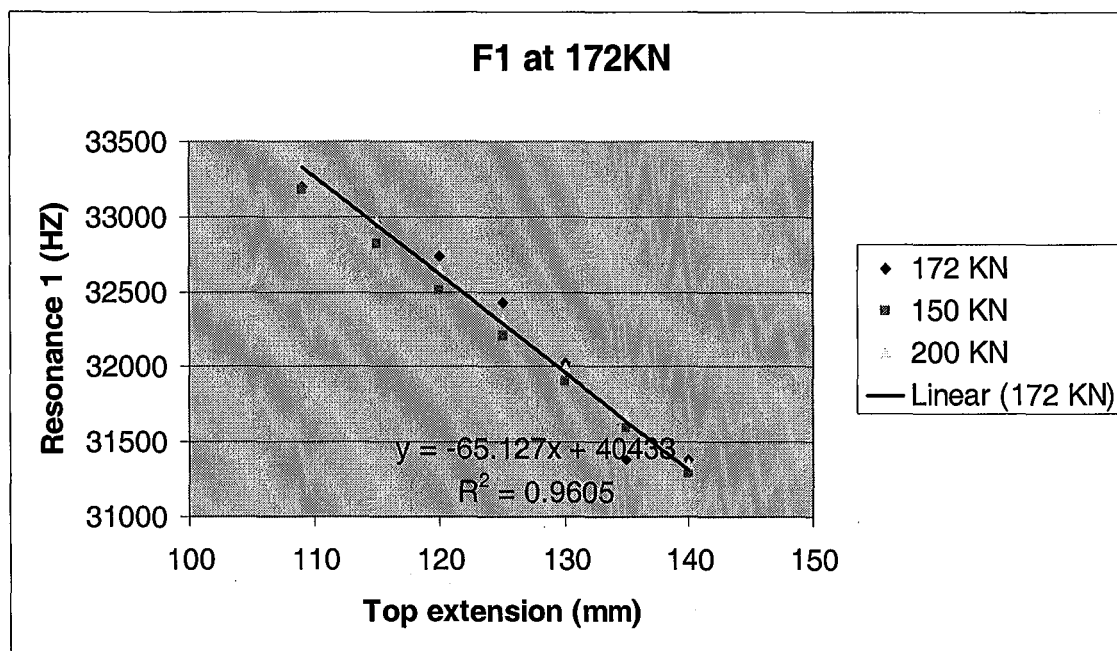


Figure 6.3 (k) Bolt extension position data

A plot is obtained by the plotting the first resonant frequency against the extension lengths, at load 172 KN. A straight line fit is done on the data and an equation of best fit is obtained. Then, the first resonance values obtained at loads 150 KN and 200 KN are applied to the equation that was obtained by fitting the resonance data at 172 KN. When those three data sets are plotted against extension lengths, the above figure 6.3 (j) is obtained. From the plot it can be seen that the slope of the resonance data is nearly the same. Also there is an offset between the three data sets which can be related to stress. To compensate for the bolt extension position, the resonance and bolt extension position of the bolt under test is measured. They are applied to the equation of straight line fit to obtain a compensated resonance value. In this project, the bolt extension position has been kept constant in all the tests and the instrument is capable of predicting stress only for bolts that have same bolt extension position of the data set. Extending the compensation procedure from one bolt to 10 bolts is time consuming and complex hence this part has been identified as future work.

d. Relaxation effect

Immediately after the bolt is tightened, the bolt load decreases for a certain time before it settles. This is known as the relaxation effect. During initial periods of testing the resonances were measured randomly in time, after the bolt has been tightened. Resonances were at times non-repeatable at the same given load, temperature and extension position. Hence the effect of relaxation was investigated and it was found that the resonance values also change when the load decreases gradually. The resonance settles with the load. Hence resonances are measured after 5 – 10 minutes after the bolt is tightened. But this is not necessary in real-time flange testing, because in almost all flange testing applications, the bolt would have been tightened long before the testing is carried out.

e. Time of excitation

Time of excitation is the amount of time that each frequency is used to excite the bolt before the next frequency is output from the sweep generator [9]. To obtain accurate frequency spectrum information of the bolt, it is important to excite the bolt at each frequency for an adequate amount of time. This issue was identified while programming the sweep generator. The software loop in the control software was first

written to step through each frequency randomly or as determined by the number of processes running in the computer's microprocessor. This gave out random resonance frequency spectrum every time a sweep was made. Hence a delay loop was added to the program to make the sweep generator output a certain frequency for the time specified by the delay loop and then step through the next frequency followed by a delay and so on. The delay time was calculated by trial and error. Since there was no known method to determine the least possible delay time required to excite a bolt to get reliable resonance information, trial and error was used. The delay time was increased gradually from zero until the obtained resonance spectrum was repeatable every time.

f. Transducer placement

The effect of transducer placement was studied by swapping the transmitting and receiving ends to the either side of the bolt. The transmitted end was now the receiving end and vice versa. The results obtained were same. Hence resonances induced in the bolt are not determined by the side of excitation or reception.

	Temp °C	Load KN	F1 Hz	F2 Hz	F3 Hz	F4 Hz	F5 Hz	F6 Hz
Top Transmitter	20.8	187.62	33200	34950	35330	42710	44390	99100
Bottom Transmitter	20.7	187.65	33190	34950	35330	42710	44400	99090

Table 6.3(l) Transducer placement

6.4 Predicting stress in single bolt

From the preceding discussions, it has been established that resonant shifts can be related to stress. However factors such as temperature, bolt position need to be compensated. It was discussed that temperature variations within the laboratory affect the resonance marginally. Bolt position need further extensive testing before a model can be developed to compensate for it. Hence bolt position is kept constant in this project. This leaves us with two significant variables, load i.e. stress and resonances. For predicting stress in a single bolt a database of various loads and their corresponding resonances is built. Before stress can be predicted in a bolt, the bolt is

tested at various loads within the typical working range of the bolt. The resonant frequencies at each load are noted down and a database is formed. The table 6.4 (a) below is a database formed for predicting stress in a B7 bolt of length 160 mm, 1' 1/8'' diameter, in a test rig. This dataset is used as a data source for the MATLAB algorithm that performs a multiple regression analysis to predict stress. The regression algorithm accepts the 3 resonant frequencies as input and predicts a load. The 3 resonant frequencies are measured by sweeping through 3 bandwidths that contain the three resonances in the data set. For this data set the typical sweep bandwidths would be 30 kHz – 34 kHz, 41 kHz – 45 kHz and 97 kHz – 99500 kHz. Temperature data is measured but not used in stress prediction. The predicted load is within $\pm 10\%$ of the actual load using the above method.

LOAD(KN)	FREQ1(Hz)	FREQ2 Hz	FREQ3 Hz	TEMP(C)
142.12	32590	43610	98794	19.3
147.85	32789	43230	98755	19.7
149	32693	43111	98525	18.5
152.78	32295	43181	98330	18.5
160.11	32711	43810	98944	19.4
163.99	32988	43270	98861	19
167.5	32826	43350	98884	19.9
167.94	32801	43477	98752	18.7
170.75	32389	43381	98437	18.6
170.9	32770	43780	98735	19
171.04	32760	43932	99038	19.2
178	32815	43684	98858	19.3
179.5	32832	43570	98802	18.7
180.2	32859	43472	98947	20
183.29	32785	43830	98753	19
184.65	33028	43350	98930	19
185.8	32520	43545	98501	19.1
185.83	32838	44042	99098	19.2
191.95	32842	43663	98872	18.3
192.08	32847	43750	98936	19.4
193.15	32895	43580	98997	20
196.55	32752	43910	98792	19
197.04	32632	43649	98547	19
198.65	33036	43440	98985	19
204.28	32887	43825	99021	19.3

Table 6.4(a) Data set for predicting stress in a single bolt

6.5 Measurement of bolt stress in a group of 10 Bolts

The single bolt that was used in initially testing is a part of a 10 bolt set. Stress can be measured in a group of 10 bolts using the same methodology that was followed while testing a single bolt. Instead of a single bolt, ten single bolts are tested. A common calibration dataset is built using the load and resonance values obtained from each of the 10 bolts. The data set for a single bolt contained 25 load values. The calibration data set for the 10 bolts has about 40 load values, 4 for each bolt. This generalisation is possible because all the bolts are made from the same material and have the same nominal dimensions. They all have same extension lengths on the either side of the spacers and the effect of temperature is marginal. A calibration data set shown in the table 6.5(a) is used to predict stress in a group of 10 bolts. If the load in the bolt under test is within the range of loads present in the data set, a stress prediction accuracy of $\pm 15-20\%$ can be obtained. The larger the data set, the better the accuracy. Any of the 10 bolts in the group can be picked and the stress can be predicted. While picking one of the 10 bolts, the process becomes generalised because there is no previous knowledge of the particular bolt except for the data set that has been built using the 10 similar bolts.

Load KN	F1 Hz	F2 Hz	F3 Hz
163	32627	44253	98521
163.01	32756	44289	98517
166.66	32668	44094	98320
169.96	32733	44246	98633
174.52	32808	44316	98658
175.4	32839	44197	98596
178.95	32684	44356	98613
179.77	32778	44226	98564
183.4	32687	44185	98365
184.64	32781	44423	98716
187.05	32687	44306	98584
187.95	32803	44123	98571
191	32778	44448	98660

192.38	32875	44280	98736
194.68	32703	44248	98386
196.45	32857	44419	98754
197.27	32791	44568	98852
203.55	32792	44513	98676
203.67	32754	44486	98800
207.32	32817	44593	98898
207.94	32793	44419	98778
208.05	32868	44255	98609
208.51	32845	44506	98832
210.83	32750	44279	98398
212.08	32934	44379	98823
212.62	32879	44479	98812
212.96	32784	44558	98685
215.9	32833	44509	98872
219.12	32838	44615	98930
222.74	32825	44505	98847
224.67	32869	44565	98910
226.33	32905	44334	98623
227.25	32969	44483	98921
227.77	32897	44518	98877
233.14	32850	44631	98983
235.82	32853	44545	98906

Table 6.5(a) Calibration data set used to predict stress in group of 10 bolts.

This dataset is used as a data source for the MATLAB algorithm that performs a multiple regression analysis to predict stress. The regression algorithm accepts the 3 resonant frequencies as input and predicts a load. The 3 resonant frequencies are measured by sweeping through 3 bandwidths that contain the three resonances in the data set. For this data set the typical sweep bandwidths would be 30 kHz – 34 kHz, 41 kHz – 45 kHz and 97 kHz – 99500 kHz.

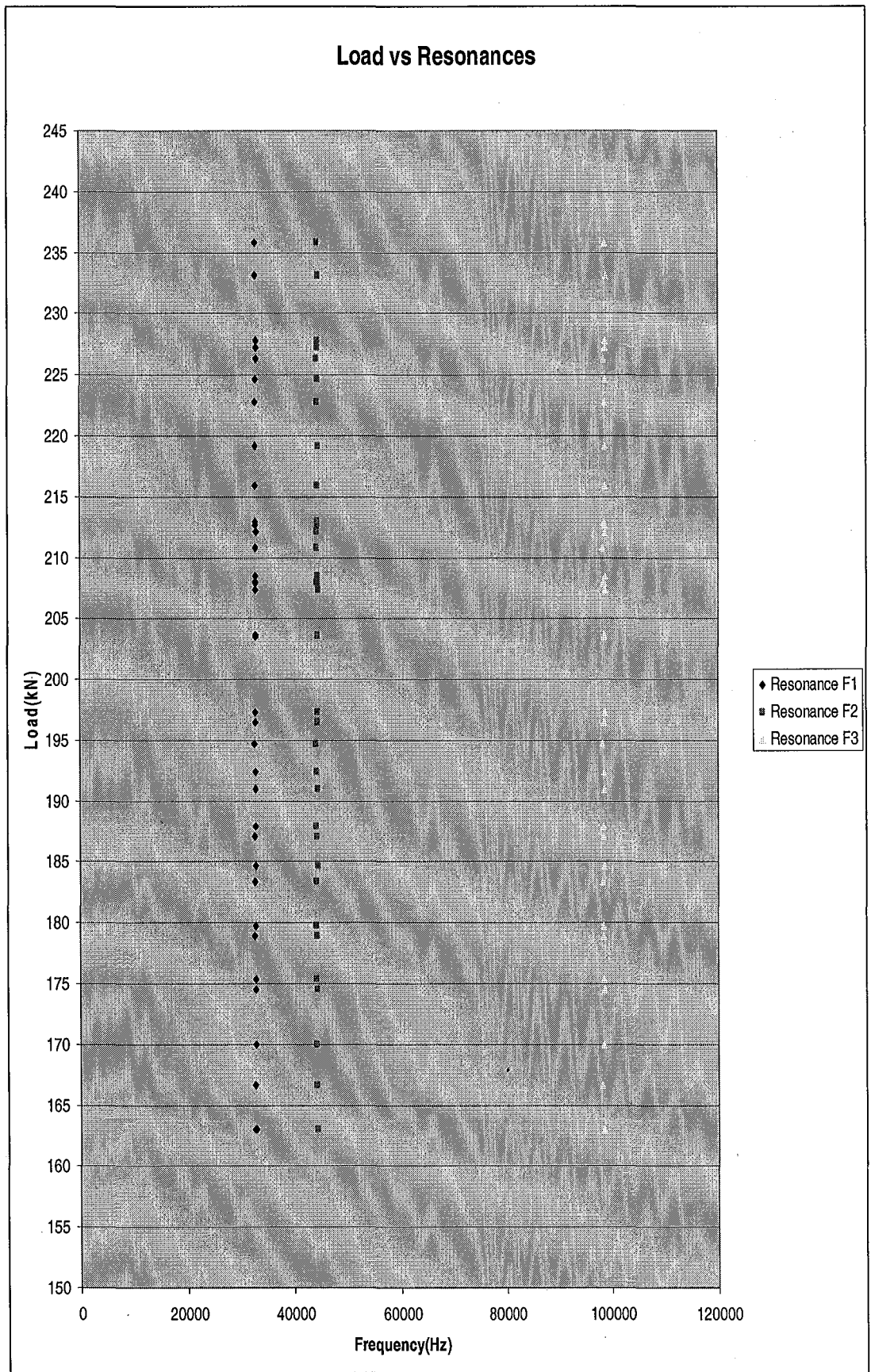


Figure 6.5(b): Graph of calibration data.

The matlab algorithm for stress prediction and calculating error prediction is as follows:

```
% Read the calibration data stored in the text file %  
data = dlmread('C:\HP ResonantInspection\regmodeldur.txt');  
  
%Store load (kN), F1 (Hz), F2 (Hz), F3 (Hz), Length (mm) to corresponding variables%  
load = data(:,1);  
data(:,[1]) = [ ];  
f1 = data(:,1);  
f2 = data(:,2);  
f3 = data(:,3);  
  
X = [ones(size(f1)) f1 f2 f3];  
% Generates coefficients of best fit for the calibration data set%  
a = X\load;  
Y = X*a;  
% Gives the maximum error for the given calibration data set%  
MaxErr = max(abs(Y - load));  
  
The MaxErr value for the calibration data set is 36, which is 36 kN. For example, if the actual bolt load is 180 kN, the prediction algorithm can have a maximum possible error of 36 kN. Hence 36 kN error for an actual load of 180 kN gives an accuracy of  $\pm 20\%$ .  
  
% Obtain the measured resonant frequencies from the user %  
resfreq01 = input('Enter the first resonant frequency in Hz');  
resfreq02 = input('Enter the first resonant frequency in Hz');  
resfreq03 = input('Enter the first resonant frequency in Hz');  
F = [resfreq01 resfreq02 resfreq03];
```

% Calculate predicted load by multiplying measured resonance and length values with calculated regression equation coefficients %

```
predictedload = a(1,1)+a(2,1)*F(1,1)+a(3,1)*F(1,2)+a(4,1)*F(1,3);
```

% Print the calculated load value %

```
fprintf('Predicted Load %d KN \n', int16(predictedload));
```

The above program obtains the three resonant frequencies as input from the user and those values are multiplied by the regression coefficients calculated using a least squares fit on the calibration data to predict stress. A detailed description of the process of operating the software and measuring resonances is provided in the user manual attached in Annexe B. The user manual provides a step by step approach to predict stress in a group of B7 bolts using the RUS instrument.

CHAPTER 7

CONCLUSION

An instrument capable of predicting stress in bolts was developed and tested. The instrument operates on the principle of shifts in resonances due to change in stress. Resonances have been used in non-destructive testing applications such as defect detection and characterisation of material properties. This project is the first to use resonances in predicting bolt stress. As with any new technology, there are limitations and areas of future work in Resonant Ultrasound Spectroscopy. The two main areas of the project are instrument development and experiments. The experiments and instrument development were done in a loop, with the experiment results feeding back to the development of accurate instrumentation.

A project plan and short term work plan were used to do the project. The project was started with basic laboratory hand-operated equipment such as sine wave generator, immersion transducers and an oscilloscope. The final instrument is a highly accurate, automated, software controlled instrument which can measure resonances to 1 Hz accuracy. The current instrument although accurate, is not intrinsically safe. Also it is not a hand-held device. Hence work has to be done on making it intrinsically safe and hand-held to have a wider market appeal. The software code consists of two parts. A C/C++ software controls the instruments and acquire the frequency response of the bolt. The MATLAB software processes the digital signal and picks the resonances from the frequency response of the bolt. It also predicts stress using a multiple regression algorithm.

The instrument at this stage cannot be used in a real-time flange. The results of the tests done on the flange have shown that the stress prediction process that works well on a test rig bolt cannot be used as such on a flange. This is an area of future work, which would open up the flange condition monitoring market to this instrument. Another area of future work is the bolt extension position. Throughout this project, bolt extension position has been kept constant while building the data sets. Work has been done on identifying a method of compensation; however time

limitations have led to assigning this work to future. Temperature compensation is also required to be done before the instrument can be used in non-laboratory conditions. A method of compensation has been identified based on the linear relationship between resonances and temperature, but the lack of an environmental chamber has led to postponing of temperature compensation tests.

Using the RUS instrument, stress can be predicted in a single bolt to $\pm 10\%$ of the actual stress. For a group of 10 bolts, the average stress prediction accuracy is $\pm 20\%$. The current ultrasound pulse-echo instruments which are used to calculate bolt stress based on the bolt elongation after tightening, have a claimed accuracy of $\pm 5\%$. But the pulse-echo instruments require measurement on the bolts before and after tightening to predict stress. Also the claimed accuracy of $\pm 5\%$ has been found to be inaccurate by the technicians of Hedley Purvis Ltd at several occasions of testing. The realistic accuracy of pulse-echo instruments are in the range of $\pm 10 - 15\%$. RUS instrument does not require measurements to be done on the bolt under test before and after tightening. This instrument relies on the dataset of 'similar' bolt data that has been built, tested and verified. The value of the RUS instrument is due to its ability to predict stress in an 'unknown' bolt. A B7 bolt which has been in place for several years and has no recorded history of pulse-echo data, is a target of the RUS instrument. RUS can also be used in condition monitoring of flanges, where the stress of individual bolts can be monitored over the course of time to provide accurate information of change in bolt stress across the flange. British Petroleum has expressed particular interest in using RUS for condition monitoring.

In this project, a new method has been developed to predict stress in bolts using shifts in resonances. Apart from stress, other factors that affect resonances have been investigated and means of compensation identified. A suitable instrument to excite the bolt and measure resonances to predict stress has been built. An accuracy of $\pm 20\%$ has been achieved with a group of 10 B7 bolts.

References

- [1]. Godfrey Hands, "Resonant Inspection a new NDT technique", NDTnet Journal, Vol.2 No.07, July 1997.
- [2]. Migliori A, "Resonant Ultrasound Spectroscopy", United States Patent 5,062,296, November 5, 1991.
- [3]. Josef and Herbert Krautkramer, "Ultrasonic Testing of Materials", 4th Edition 1990, ISBN 0-387-51231-4
- [4]. Jones, D.S. "Acoustic and Electromagnetic Waves", Oxford, England, University press, 1986.
- [5] W.H. Bowes, L.T. Russel and G.T. Suter, "Mechanics of Engineering Materials", Wiley and Sons Inc, 1984
- [6] Albert Migliori and John L. Sarrao, "Resonant Ultrasound Spectroscopy", John Wiley and Sons Inc, 1997.
- [7] Naum D. Veksler, "Resonance Acoustic Spectroscopy", Springer Series on Wave Phenomena, Vol. 11, 1996
- [8] Guide to Ultrasonic Inspection of Fasteners, Stresstel Inc. Rev.B, 2002
- [9] Frank A. Willis, "Method of rapid data acquisition in resonant ultrasound spectroscopy", United States Patent 6,023,975, February 15, 2000.
- [10] Albert Migliori and Timothy Darling, "Resonant ultrasound spectroscopy for materials studies and non-destructive testing", Ultrasonics, Volume 35, Issues 2-5, June 1996.

[11] U. Schlengermann, W. Hansen, Krautkrämer GmbH & Co., "Resonance inspection - the answer to new industrial demands with regard to quality assurance", NDTnet Journal, Vol. 02, No. 7, July 1997.

[12] NDT Encyclopaedia, www.ndt.net

[13] Richard Handford, S Johnstone, "Non-linear model of Resonant Ultrasound Spectroscopy in bolts", BEng Final year project, Durham University, 2005

Annexe A

Software Code

The DVD contains C/C++ program files and MATLAB program files. They are stored as text files to make it easy to view them. The DVD also contains pictures of the individual instruments and hardware manuals.

File Description

1. hpresonantinspection - C/C++ Instrument control software
2. HPDataAnalysis – MATLAB Software to process the acquired data and pick resonances
3. HPRefineSearch – MATLAB program to store user selected sweep bandwidths
4. Loadprediction – MATLAB program to perform regression analysis and predict load.

Annexe B
Resonant Inspection Operating Manual

Contents

1. Quick start guide	2
2. Instrument setup	
2.1 Load cell setup	4
2.2 Connectors and cable setup	4
2.3 Oscilloscope and thermocouple setup	4
2.4 DS335 sweep generator setup	5
2.5 5113 Preamplifier setup	5
2.6 HS3 Setup	5
3. Finding useful resonances	9
3.1 Level of confidence in peaks	9
4. Building a calibration data set	10
4.1 Software setup	12
4.2 Running the program	13
4.3 MATLAB data analysis	14
4.4 Running the MATLAB program	14
5. Load prediction using the calibration data set	16
6. Troubleshooting	17
6.1 HS3	17
6.2 Pre-amplifier	17
6.2 HPDataAnalysis	17

Figures:

FIGURE 1.1 – Test rig diagram with HS3 as sweep generator

FIGURE 4.1 - Test rig diagram with DS335 as sweep generator

FIGURE 4.2 – Calibration data set table.

SECTION 1 – QUICK START GUIDE

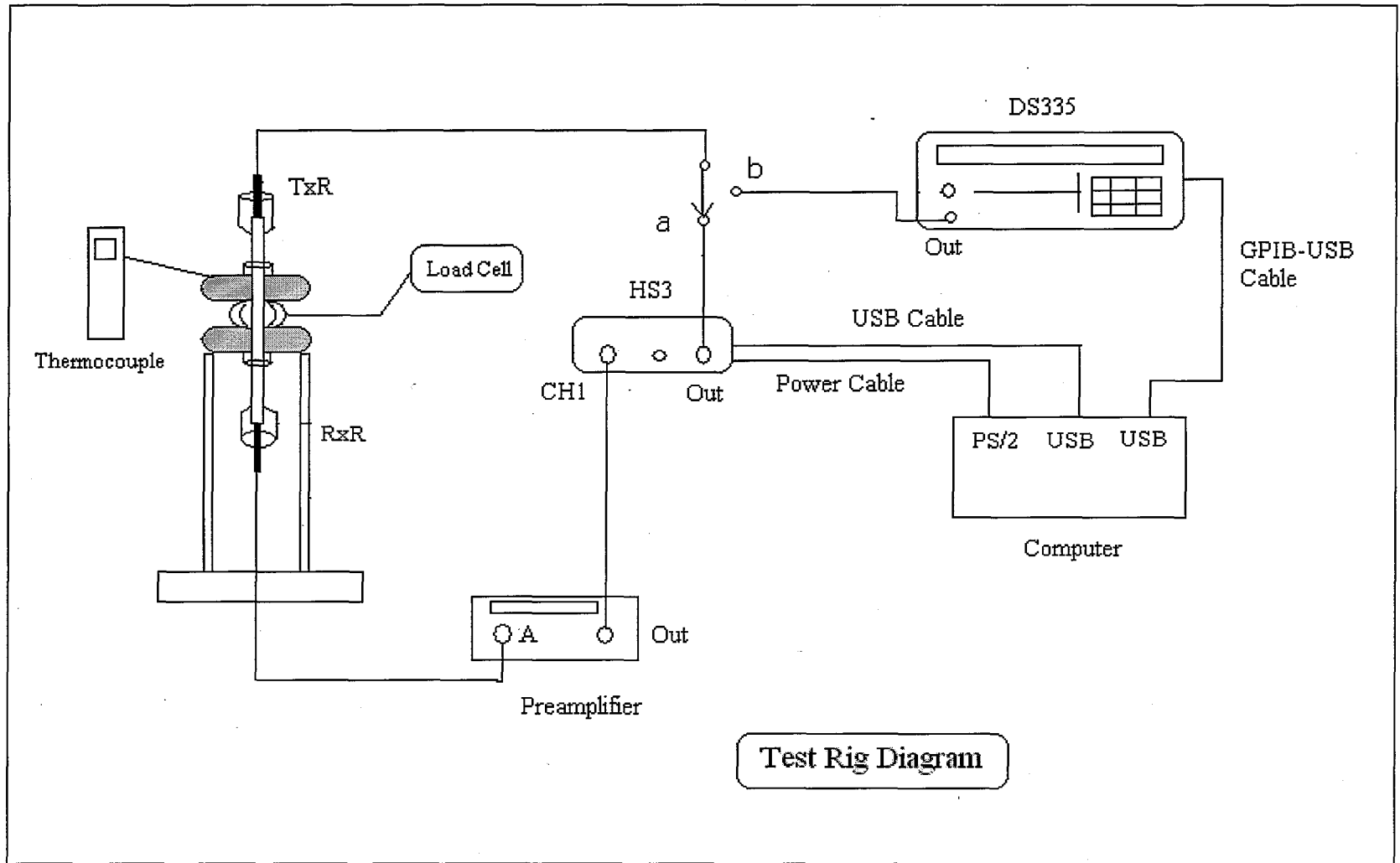
To build a calibration data set of a new set of bolts, identify useful resonances of the bolt using HS3 and for each bolt in the data set, find the resonances to 1 Hz or 10 Hz accuracy.

1. Setup the test rig as shown in figure 1.
2. Load the bolt to a suitable stress level (e.g. 180 KN)
3. Setup the instruments (refer section 2)
4. Find useful resonances (refer section 3 &4)
5. Make DS335 as sweep generator (refer Figure 2)
6. Build calibration data set as explained in section 5. Repeat section 5 for all the bolts at different loads to the build the data set
7. Predict Load (refer section 5)

Check List of instruments:

1. Resonant inspection probes - 2
2. Probe holders - 2
3. SMA – BNC Connectors - 2
4. BNC – BNC co-axial cables .
5. Stanford Research DS335 sine wave generator & GPIB-USB adaptor
6. Handyscope – HS3 Data Logger
7. Digital Storage Oscilloscope
8. Low noise voltage pre-amplifier & Power supply adaptor
9. Load transducer
10. Thermocouple

FIGURE 1.1
SECTION 2 - INSTRUMENT SETUP



2.1 Load cell setup

The load cell is setup as shown in the figure. Probe holders are screwed on to the either ends on the bolt. The RI (Resonant inspection) probes are screwed on to the probe holders. Probes are adjusted at the point of contact with the bolt so that the probe tips are in full contact with the bolt surface. If the bolt surface at the point of contact has bumps, uneven surface or other anomalies, the surface must be prepared to a suitable standard before testing. The point of contact should be even, without any rust, bumps or pits.

2.2 Connectors and Cables

The load transducer cable (in between two spacers) is connected to the rear of the measurement box. A suitable connector is provided at the rear of box.

The two SMA (Male) –BNC (Female) connectors are screwed on to the ends of two RI probes. Two BNC (M) – BNC (M) cables are connected to the BNC (F) ends of the connectors attached to the probes.

The other end of the cable from the transmit probe is connected to the 'OUT' of the Handyscope 3(HS3). The other end of the cable from receive probe is connected to 'A' input of the voltage pre-amplifier. The output of the pre-amplifier is connected to the 'CH1' of the HS3 using a BNC-BNC cable. The USB cable behind the HS3 is connected to the computer USB port. The power supply cable behind the HS3 is connected to the PS2 port (mouse/keyboard port) of the computer. The Low noise voltage amplifier is connected to the power supply via a power adaptor and switched ON.

2.3 Oscilloscope and thermocouple setup

1. The oscilloscope is connected to the power supply and switched ON. It is used only if necessary.
2. Thermocouple probe is taped to the upper spacer and switched ON.

2.4 DS335 setup

- a. The GPIB – USB interface is connected to the rear of the DS335 and the USB end is plugged to the computer.
- b. DS335 is connected to power supply and switched ON

2.5 Pre-amplifier setup

Coupling mode: A 1s (By pressing the 'Input Coupling' button)

Filter : 30 KHz (Use LF Roll off) – 300 KHz (Use HF Roll off)

Gain : 500 or appropriate to signal amplitude.

2.6 HS3 setup

Open HS3 software by clicking on the 'Handyscope 3 v2.52' icon on the Desktop or Start -> All Programs -> Handyscope 3. If a dialog appears saying '*No instrument found*', click '*Close*'. Again open 'Handyscope 3 v2.52' by clicking on it. The HS3 should work now. Click on the spectrum analyser. Close the oscilloscope. Click on the Generator.

In the spectrum analyser click File -> Load Instrument settings. Browse to the location of the saved settings file and click OK to load the settings on to the spectrum analyser.

OR

Make the following settings in the HS3 and save them for future use.

1. File

- a. **Save Instrument setting:** Used to save the instrument setting for future use. Settings, once saved, can be loaded easily using **Restore Instrument Setting**.

- b. **Data File Type** – select 'ASCII'
- c. **Write waveform to disk** – Used to save the spectrum as a data file in the hard disk. Four files are created for a save. filename.DAT, filename.GEG, filename.REF and filename.FFT. The filename.FFT contains frequency and voltage data, which can be imported into MATLAB or Excel for further analysis. Other three files are not used.
- d. **Save Image** – For saving the image of the spectrum to the hard disk.

2. Measure

- a. **CH1** – For measuring the signals from CH1. Similarly CH2 for CH2 measurement and CH1 & CH2 for simultaneous measurement. Usually CH1 is used.
- b. **Perform Averaging of** – Used to reduce error by averaging the acquired signal. Since HS3 is used only to get a picture of spectrum, 1 averaging is ok. Increasing the averaging increases time taken for measurements and increases accuracy.
- c. **Measure Maximum Values** – It is selected for resonant inspection measurements. Unselecting it makes only the instantaneous values of the spectrum available.

3. CH1

- a. **Sensitivity** – Sensitivity is set according to the signal level at input. 2V, 4V, 8V are the usual values used in RI. Signal level can be measured using an oscilloscope or by trial and error on the spectrum analyser. If the signal voltage is much more than sensitivity level, the signal is clipped and distortion introduced in the spectrum.
- b. **Signal coupling** – Coupling AC
- c. **Software Gain** – 1. Increase if a software amplification of the signal is required.
- d. **Software offset** – 0.
- e. **Axis Type** – Linear
- f. **Units of measure** – Volts
- g. **Units Gain** – 1.
- h. **Units offset** – 0.

4. Frequency Axis

- a. **Frequency Range:** To set the required frequency range for measurement. For a sweep, frequency range is usually set in the sweep generator. Hence this can be ignored.
- b. **Record Length:** Record length determines frequency resolution. Below 100 kHz, 4096 gives 24 Hz resolution. Above 100 kHz, 8196 gives 30 Hz resolution. These two are the usually used record lengths. A higher or lower record length may be chosen to get a higher or lower frequency resolution. High record lengths take longer to sweep and vice versa.
- c. **Record View Gain – 1.**
- d. **Axis Type – Linear**

5. Cursors

- a. Select appropriate cursors to measure the values in the spectrum. Both large and small cursors do the same thing.

6. Settings

- a. **FFT function** – Select an appropriate window. Usually Blackman-Harris window is used.
- b. **Vertical Log axis range** – Clipped to confirm hardware specs
- c. **Interpolation** – ON

Signal Generator Settings

On the instrument selection panel of the HS3, select 'Generator' to enable the Signal Generator. Select 'Sine'. Set Amplitude to '10V' and Symmetry to 'Mid' and DC Offset to 0.

Click on the 'Sweep' button. When a frequency sweep is to be performed, select 'Manual' in the sweep generator settings. Enter Start and Stop frequencies in Hz. Enable 'Frequency Sweep related to spectrum length'. Click Continue to complete the sweep generator settings. There is an ON/OFF button for the Sweep. If the spectrum analyser is left turned ON, the spectrum analyser can be controlled by the ON/OFF button of the sweep generator.

After making all the settings, save the settings for future use. The settings file can be reloaded into the HS3, without having to redo all the settings again. Variable parameters for the RI sweeps are usually the record length (to change frequency resolution), sensitivity (to match the signal level), start and stop frequencies in the sweep generator.

The HS3 is used as a signal generator and data analysis device for identifying useful resonant frequencies in a new bolt. After identifying the useful resonances using HS3, DS335 is used as a signal generator and MATLAB is used for signal analysis.

SECTION 3 - FINDING USEFUL RESONANCES.

The bolt is loaded up to for e.g.180 KN. A sweep in the frequency range of 30 KHz – 100 KHz is carried out first. The start (30 KHz) and stop (100 KHz) frequencies are entered in the sweep generator. The sweep generator is switched ON, and the spectrum analyser plots the response of the bolt for each frequency sent out by the generator. Stop the sweep generator after it sweeps through to 100 KHz.

The spectrum is analysed for resonant peaks. The peaks that are well defined i.e. symmetric and without splits, are noted down. Usually there are 3-5 good peaks when the bolt is under stress. When the bolt is unstressed the resonant peaks are clearly spaced and well defined. Distortion in the spectrum is very less when the bolt is unstressed.

After a first sweep, a smaller sweep is done in 10 KHz bandwidths, in order to make sure that the peaks selected in the 1st sweep are good enough. If for e.g. the noted peak frequencies were 36.750 KHz, 45.250 KHz and 98.950 KHz, the smaller sweeps are done over 30-40 KHz, 40-50 KHz, 90-100 KHz.

The peaks are examined in each 10 KHz sweep. If any additional peaks that seem to be good peaks appear in the 10 KHz sweep, those frequencies are also noted down.

3.1 Level of confidence in peaks

The bolt load is now increased to say equivalent of 200 KN. The frequencies of the peaks noted previously are checked for shifts. The shifts are mostly +ve. There may rarely be -ve shifts with some peaks. The magnitudes of shifts are noted. Bigger the shift, more the confidence in a peak. Usually shifts are in the range of 20 Hz to 200 Hz for a 360 mm bolt length. Also any splits or distortions in the selected peaks are also noted down.

The bolt load is increased to 220, 240 KN. The peaks are analysed in those loads and shifts are noted down. Finally the resonant peaks are picked according to their shifts, symmetry and repeatability across different bolt loads.

By performing the above experiments, useful resonances are identified using Handyscope. However, resonances picked up by Handyscope have a resolution of 10 Hz - 25 Hz. Handyscope is used for preliminary identification of peaks from the spectrum using FFT analysis. A 1 or 10 Hz resolution is required to have a clearly defined highly accurate resonant peak. RI software is used to achieve 1 Hz resolution and accurate measurement of peaks using C and Matlab program.

SECTION 4 - Building a calibration data set for a group of 10 bolts

Having done the initial calibration of a single bolt, a calibration data set is built by testing a group of 10 bolts. A shift in resonant frequency is due to factors such as change in bolt load, bolt length, bolt extension position,

temperature and the actual testing structure. To build a calibration data set, the temperature is assumed to vary from 17 degree Celsius to 21 degree Celsius. The lengths of bolts in the group are same (± 0.5 mm). Bolt extension position is made the same for all the tests. The only variable is bolt load. For each bolt, resonances at 180, 200, 220 and 240 KN are noted down. Due to load loss, the loads in KN vary between 160 KN to 250 KN. An example of calibration data set is shown below.

Length (mm)	Load KN	F1 (Hz)	F2 (Hz)	F3 (Hz)
359.10	163.00	32627	44253	98521
359.04	163.01	32756	44289	98517
360.54	166.66	32668	44094	98320
359.16	169.96	32733	44246	98633
359.14	174.52	32808	44316	98658
359.22	175.40	32839	44197	98596
359.10	178.95	32684	44356	98613
359.04	179.77	32778	44226	98564
360.54	183.40	32687	44185	98365
359.04	184.64	32781	44423	98716
359.18	187.05	32687	44306	98584
359.04	187.95	32803	44123	98571
359.16	191.00	32778	44448	98660
359.22	192.38	32875	44280	98736

Table 1

To build a calibration data set like the one above, a measurement of length of the bolt, load measurement using the load cell and measuring resonant frequencies using the resonant inspection instrument are required. Length of bolts can be measured using micrometer or other accurate devices. Resonances are calculated by the Matlab software, referred to as 'HPDataAnalysis'. Note that the three resonances in the calibration data set were initially identified by using HS3 software at 24 Hz accuracy. The aim is to measure those resonances to 1 Hz accuracy using DS335 as signal generator

and HS3 as data logger. Both controlled by software referred to as 'HPResonantInspection', that is compiled using MS Visual Studio and runs in a MS-DOS console window within Windows OS.

The test rig and the instruments are set up as described before and the length of the bolt is measured before it is loaded to a suitable value. The HS3 is used to identify useful resonances by testing the bolt at few different loads. The input transducer which was connected to the HS3 output for initial tests is now connected to the DS335 output, as shown in Figure 2 – the position of the switch b, indicates that the DS335 is now used as a sweep generator.

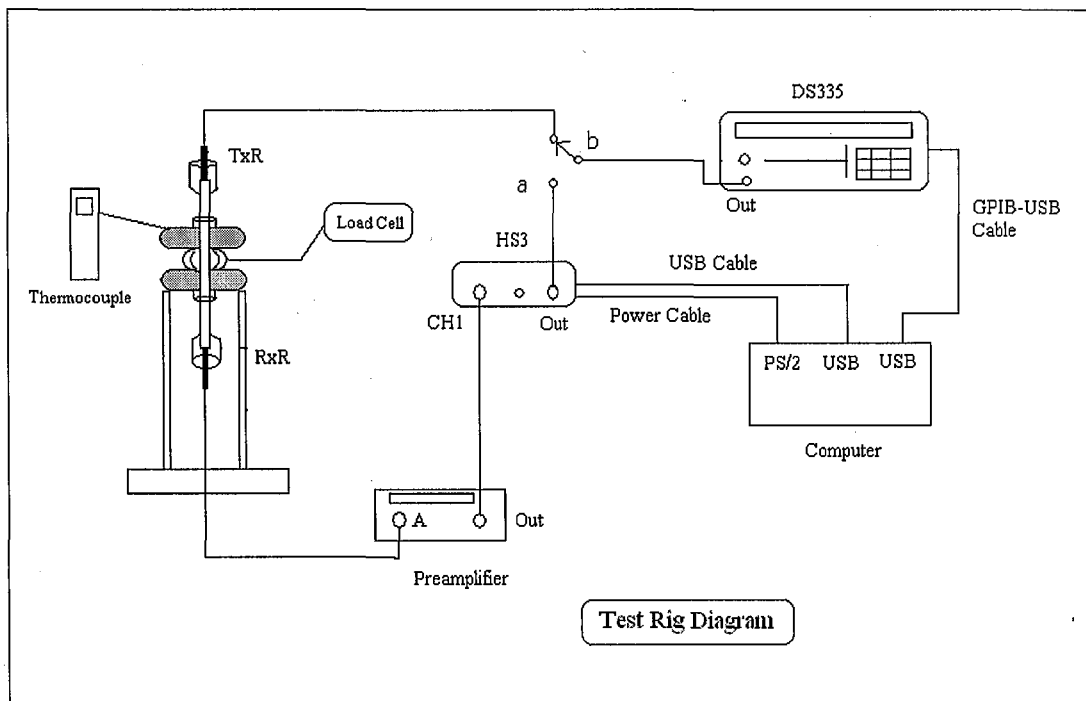


FIGURE 4.2

For the batch of bolts, the 3 identified resonances are present for all the bolts. A sweep bandwidth for a 100 Hz sweep is to be determined. Looking at the calibration data set, 3 suitable bandwidths are 31 kHz – 34 kHz, 43 kHz – 46 kHz and 97 kHz – 99.9 kHz. To start without a calibration data set, 1 kHz either side of the useful resonances can be set as the sweep bandwidth for a sweep in 100 Hz steps.

4.1 Software Setup

The aim is to setup the instrument software and sweep over the identified bandwidths to get accurate resonance information. Once the instrument are setup, all the program files are provided in the zip file named 'SoftwareCode.zip', located in C:\SoftwareCode.zip. Extract the contents to a folder C:\Software Code.

Click on Microsoft VC++ 6.0 icon on the desktop or Click Start -> All Programs -> MS Visual C++ 6.0 -> MS Visual C++ 6.0. Click File -> New. Click on the projects tab, select *Win32 Console Application*. Set the location to C:\ and in the project name box on the right, enter HP ResonantInspection. *Click OK*. In the new dialog box, select *An empty project*. Click Finish. Click OK. Now a folder called HP ResonantInspection will appear on the C:\ drive. Copy all the contents of the folder C:\Software Code to the C:\HP ResonantInspection folder.

Browse to C:\HPResonantInspection\hpresonantinspection.cpp. Then and click OK. Now the file is displayed in the editor.

Then select View -> Workspace. On the bottom of the workspace, choose *File View*. Workspace is displayed on the left side of the editor. Click Project -> Add to Project -> Files. Browse to C:\HPResonantInspection\hpresonantinspection.cpp. Click OK. Now the file is displayed in the editor. Click Project -> Add to Project -> Files. Browse to the project folder i.e. HP ResonantInspection folder on the C:\. Select 'All files' in the '*Files of type*' section. Now 'gplib-32.obj' is displayed. Select that file and click OK. The file gplib-32.obj is added to the project files, in the project workspace.

1. Press Ctrl+F7 to compile the file.
2. Goto C:\HP ResonantInspection. Copy the files hs3f12.hex and gplib-32.obj to C:\HPResonantInspection\Debug
3. Press Ctrl+F7 again to compile
4. Press F7 to link
5. Press F5 to run the program.

All the files have been setup and the program can be started. This setup has to be done only once. For further use, the workspace can be opened directly by clicking File -> Open Workspace -> C:\HPResonantInspection\hpresonantinspection.dsw . To run the program, click on the file 'hpresonantinspection.cpp' in the workspace. It is displayed on the editor. If it doesn't appear, choose File View below the workspace or setup the project again.

4.2 Running the program

1. Press Ctrl+F7 to compile. 2 Press F7 to link 3. Press F5 to run.
2. A console window opens and shows HS3 Initiliased.
3. Enter sensitivity in Volts. Sensitivity is matched to input signal.
4. Then DS335 initialized
5. Enter step of frequency sweep. (1,10,100)Hz.

For a broad sweep use 100 Hz For e.g. if the band 31-34 kHz has a resonance (known by using HS3 previously), at 32000. The very first sweep step would be 100 Hz. The sweep bandwidth can be reduced by identifying the refined start and stop frequencies using MATLAB. For e.g. the MATLAB software would identify the resonance at 32000 to 100 Hz accuracy. Which means the matlab software can identify the first resonance to be anywhere between 31900 and 32100.

6. Enter datafilename. Format filename.dat. For subsequent sweeps, enter different filenames becoz all filenames should be unique. E.g. filenames can be data01.dat , data02.dat etc
7. Select Sweep mode.
8. Enter the number of bands over which sweep will be carried out. From the calibration dataset example, a sweep over three bands 31 kHz – 34 kHz, 43 kHz – 46 kHz and 97 kHz – 99.9 kHz is required. So enter number of bands as '3', in this case.
9. If sweep mode = 2, the format for entering the start and stop frequency in Hz is FREQ0000000. For e.g. for 38 kHz = 38000 Hz. Enter FREQ0038000. For 102 kHz = 102000 Hz, enter FREQ0102000.
10. If sweep mode 1 was selected, the program retrieves start and stop frequencies from a file created by MATLAB.

At the end of sweeps, the program exits by itself or just press any key for the console window to close.

4.3 Data Analysis – Extracting Resonant peaks

Further analysis is done on MATLAB. Click MATLAB 7.0.1 icon on the desktop to open the MATLAB software. It can also be opened by Start -> All Programs -> MATLAB 7.0.1 -> MATLAB 7.0.1

On the MATLAB toolbar, set the current directory to C:\HPResonantInspection. Click File -> Open. Select HPDataAnalysis.m, click OK. Again Click File -> Open. Select HPRefineSearch.m, click OK. Now there are two editors open in MATLAB, for the above two files. HPDataAnalysis is used for plotting, selecting resonances.

The main function of HPDataAnalysis software is to plot the frequency response of the bolt. The plot of the response is interactive. The x values in the plot denote frequency values and y values in the plot denote rms voltage.

Having run the HPResonantInspection software to sweep over the required frequency bands, HPDataAnalysis is to be run next.

4.4 MATLAB program procedure:

1. Activate HPDataAnalysis window
2. Press F5 to run the program
3. The program processes the data acquired by the HPResonantInspection program and plots the resonance spectrum. Each band has a separate plot and there is a full plot comprising all the bands.
4. 1 Hz is the maximum accuracy that can be obtained. So if the sweep was done for 1 Hz, no further action is required in the program.
5. Click the main MATLAB window. The resonances are computed in the main MATLAB window is noted down.
6. If the sweep step was 100 Hz, the figure windows are activated. Figure (1) displays the resonance in first sweep band; figure (2) displays the resonance in second sweep band and so on.

7. Click the first figure window. Using the mouse, select start and stop frequencies on the either side of the peak. Note that the peak displayed has an accuracy of 100 Hz. A narrow sweep is required to identify it to 1 Hz resolution. So the values to be selected either side of the peak will be the new start and stop frequencies over which the next weep will be done.

For e.g. to identify a resonance between 32000 Hz – 34000 Hz, sweeping at 1 Hz resolution takes lot of time, because it is 2000 frequency steps. So a 100 Hz step sweep is done, which is 20 frequency steps over the 2000 Hz bandwidth. After that using the MATLAB figure window the peak is identified to be at 32500 Hz. So if we select the new start and stop frequency to be 32400 and 32600 respectively, a 1 Hz sweep takes only 200 steps. So we have effectively reduced the steps from 2000 to 200.

In the figure window, select a value on the left side of the highest point of peak and *Click Store*. Then select a value on the right side of the highest point of peak and *Click Store*. Now the new start and stop frequencies of band 1 are stored. Do the same for all the other figure windows. At the end, there are new start and stop frequency values stored for each frequency band. Close all the figure windows.

8. Click the HPRefineSearch window. Press F5.
9. Return to the MS Visual Studio. Run the file *HPResonantInspection* as previously described in 4.2. Enter a new step size (1 Hz or 10 Hz) and enter a new file name. *Select Mode 1*. The software sweeps over the bands that were selected by the user in the MATLAB figure window.
10. At the end of the sweep, come back to MATLAB. Run the program *HPDataAnalysis*. Now the figure windows show resonances to 1 or 10 Hz accuracy. Note down the values of the resonance from MATLAB.



SECTION 5 - LOAD PREDICITON

Once a calibration data set is built like the one in figure 4.1, load can be predicted for any of the bolts in the group of say 10 bolts, using the Matlab program *loadprediction.m*. Open the file using the same procedure as described before. It is located in C:\HPResonantInspection\loadprediction.m.

Before running load prediction, find out resonances of the bolt for which the load is to be calculated. The resonances to be found are similar to the ones in the calibration data set. In this particular example, the resonances for a bolt in the group would be in 32 kHz – 33 kHz, 44 kHz – 45 kHz and 98 kHz – 99 kHz.

Resonances are measured for the bolt under test. The resonances and bolt length are inputs to the multiple regression algorithm *loadprediction.m* and the output is a predicted load.

In the file *loadprediction.m*, the variable F takes in a vector value. The format for entering the resonances and bolt length to vector F is $F = [F1 \ F2 \ F3 \ \text{Length}]$. F1, F2, F3 are in Hz and Length in mm. In practise, it would be for e.g. $F = [32875 \ 44280 \ 98736 \ 359.22]$, where the values have been obtained by measuring the appropriate resonances and length of the bolt under test.

Press F5 to run the program. The program predicts the load in KN.

