

calibrite

colorchecker CLASSIC

# WOMEN'S DRESS FOR CHURCH CANDELARIO, SALAMANCA

FROM PHOTOGRAPHS  
IN THE COLLECTION OF  
THE HISPANIC SOCIETY  
OF AMERICA



P(12239)

The special feature of the dress worn to church by the women of Candelario is the cape (*mantilla*) over the head and shoulders. The cape is made of satin, bordered with velvet and trimmed with passementerie. A frill of lace falls over the face and hair from the front of the cape, which is pinned at the top to the *moño*. A kerchief of red silk, embroidered with blue and yellow floss, is worn under the cape. The bodice of black velvet is laced over a neckerchief of rose silk striped with green. A circular skirt of mulberry and brown broadcloth, bordered with black velvet, completes the costume. The hand knit stockings of white cotton and the shoes of black velvet and patent leather trimmed with black lace are worn also with the festival dress.

COPYRIGHT, 1931, BY  
THE HISPANIC SOCIETY OF AMERICA

100mm



P (12238)

## WOMEN'S DRESS FOR CHURCH CANDELARIO, SALAMANCA

FROM PHOTOGRAPHS  
IN THE COLLECTION OF  
THE HISPANIC SOCIETY  
OF AMERICA

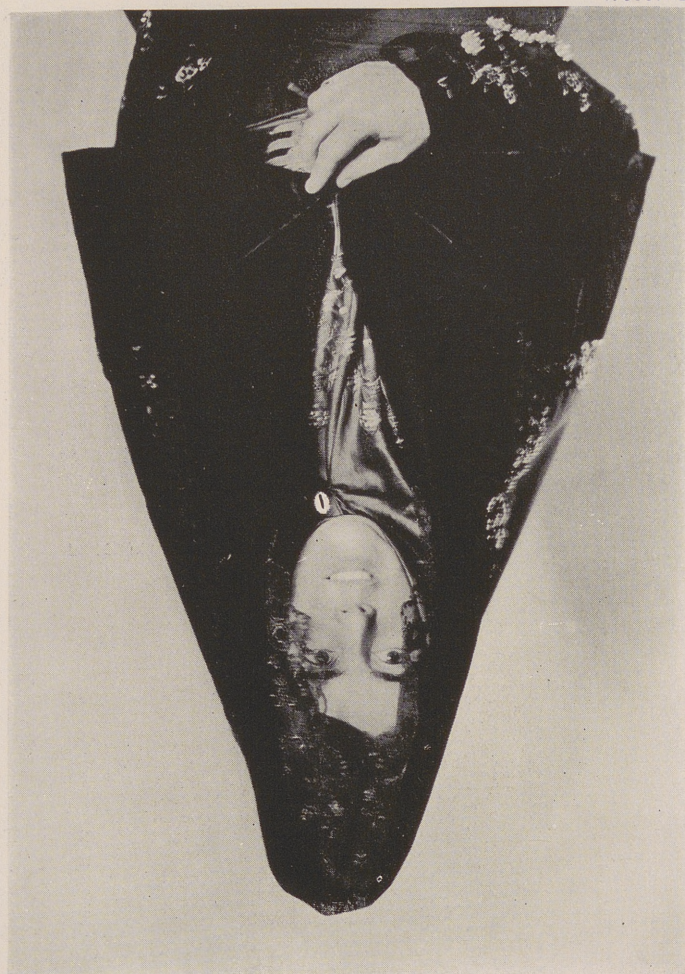


P (12239)

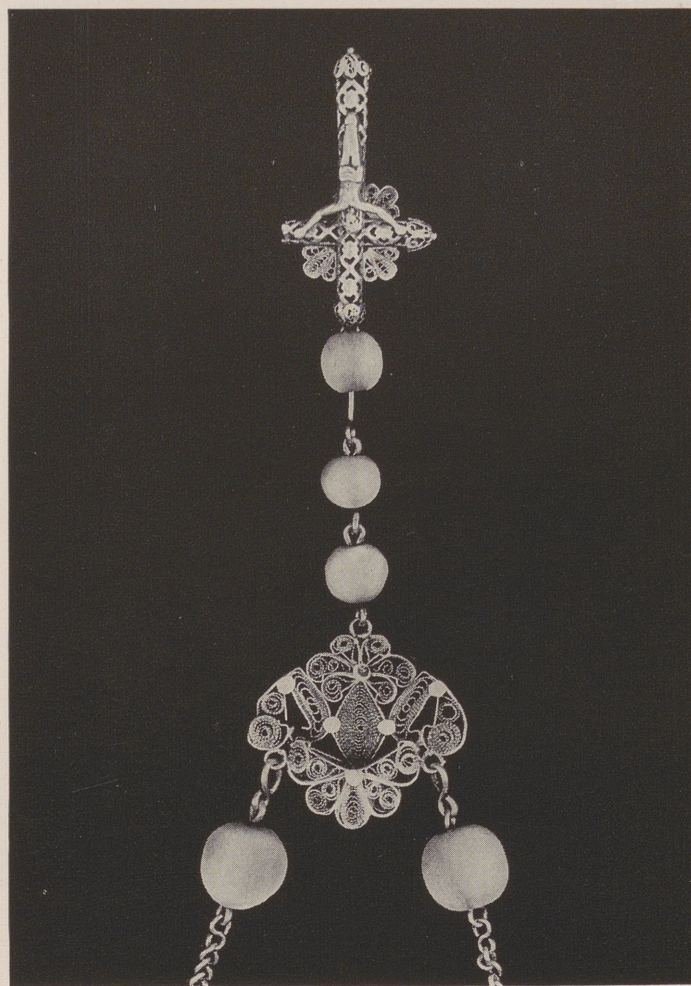
The special feature of the dress worn to church by the women of Candelario is the cape (*mantilla*) over the head and shoulders. The cape is made of satin, bordered with velvet and trimmed with passementerie. A frill of lace falls over the face and hair from the front of the cape, which is pinned at the top to the *moño*. A kerchief of red silk, embroidered with blue and yellow floss, is worn under the cape. The bodice of black velvet is laced over a neckerchief of rose silk striped with green. A circular skirt of mulberry and brown broadcloth, bordered with black velvet, completes the costume. The hand knit stockings of white cotton and the shoes of black velvet and patent leather trimmed with black lace are worn also with the festival dress.

COPYRIGHT, 1931, BY  
THE HISPANIC SOCIETY OF AMERICA

P(12236)



P(12310)



P(12238)



## WOMEN'S DRESS FOR CHURCH CANDELARIO, SALAMANCA

FROM PHOTOGRAPHS  
IN THE COLLECTION OF  
THE HISPANIC SOCIETY  
OF AMERICA



P(12239)

The special feature of the dress worn to church by the women of Candelario is the cape (*mantilla*) over the head and shoulders. The cape is made of satin, bordered with velvet and trimmed with passementerie. A frill of lace falls over the face and hair from the front of the cape, which is pinned at the top to the *moño*. A kerchief of red silk, embroidered with blue and yellow floss, is worn under the cape. The bodice of black velvet is laced over a neckerchief of rose silk striped with green. A circular skirt of mulberry and brown broadcloth, bordered with black velvet, completes the costume. The hand knit stockings of white cotton and the shoes of black velvet and patent leather trimmed with black lace are worn also with the festival dress.

COPYRIGHT, 1931, BY  
THE HISPANIC SOCIETY OF AMERICA



P(12234)



P(12235)



P(12294)



P(12290)



P(12306)



P(12308)



P(12307)



P(12229)



P(12231)

