



Citation for published version:

Coulthard, J, Clark, SR, Al-Assam, S, Cavalleri, A & Jaksch, D 2017, 'Enhancement of super-exchange pairing in the periodically-driven Hubbard model', *Physical Review B : Condensed Matter and Materials Physics*, vol. 96, 085104. <https://doi.org/10.1103/PhysRevB.96.085104>

DOI:

[10.1103/PhysRevB.96.085104](https://doi.org/10.1103/PhysRevB.96.085104)

Publication date:

2017

Document Version

Peer reviewed version

[Link to publication](#)

(C) American Physical Society, 2017.

University of Bath

Alternative formats

If you require this document in an alternative format, please contact:
openaccess@bath.ac.uk

General rights

Copyright and moral rights for the publications made accessible in the public portal are retained by the authors and/or other copyright owners and it is a condition of accessing publications that users recognise and abide by the legal requirements associated with these rights.

Take down policy

If you believe that this document breaches copyright please contact us providing details, and we will remove access to the work immediately and investigate your claim.

Enhancement of super-exchange pairing in the periodically-driven Hubbard model

J. Coulthard¹, S. R. Clark^{2,3}, S. Al-Assam¹, A. Cavalleri^{3,1} and D. Jaksch^{1,4}

¹Clarendon Laboratory, University of Oxford, Parks Road, Oxford OX1 3PU, United Kingdom

²Department of Physics, University of Bath, Claverton Down, Bath BA2 7AY, United Kingdom

³Max Planck Institute for the Structure and Dynamics of Matter,
University of Hamburg CFEL, Hamburg, Germany and

⁴Centre for Quantum Technologies, National University of Singapore, 3 Science Drive 2, Singapore 117543

(Dated: August 16, 2016)

We show that periodic driving can enhance electron pairing in strongly-correlated systems. Focusing on the strong-coupling limit of the doped Hubbard model we investigate in-gap, spatially inhomogeneous, on-site modulations and demonstrate that they substantially reduce electronic hopping without suppressing super-exchange interactions and pair hopping. We calculate real-time dynamics for the one-dimensional case, starting from zero and finite temperature initial states, and show that enhanced singlet-pair correlations emerge quickly and robustly in the out-of-equilibrium many-body state. Our results reveal a fundamental pairing mechanism that might underpin optically induced superconductivity in some strongly correlated quantum materials.

PACS numbers: 03.67.Mn, 03.67.Lx

I. INTRODUCTION

Controlling the structural and electronic properties of a solid by resonantly driving a single low-energy degree of freedom is emerging as a transformative tool in materials science [1]. Such excitations often play a decisive role in stabilising various broken-symmetry states, and driving them opens up the possibility to switch between phases. This not only includes the melting of equilibrium long-ranged order, like charge-density-waves [2–6], magnetic order [7–9], and orbital order [9, 10], but even more remarkably, *inducing* order, such as superconductivity, out of equilibrium [11, 12].

To date, light-induced superconductivity has been observed in several cuprates [13–15] and an alkali-doped fullerene [11] all with quite distinct physics. This raises the question of how ubiquitous such effects are, and what mechanism(s) might underpin their appearance. So far, theoretical exploration has concentrated on a minimal Fröhlich-type model of phonon-mediated superconductivity [16, 17] subjected to a driving induced quench of the electronic hopping amplitude. This was envisaged as occurring from a modified electronic structure due to non-linear phonon coupling [16, 18], or from polaronic suppression due to phonon squeezing [17], and in either case results in an increase in the density of states at the Fermi level giving a corresponding increase in the superconducting coupling constant. Despite the slow collective dynamics and elevated electron-phonon scattering, fast enhancements of the superconducting order parameter were predicted.

In this work we propose a qualitatively different mechanism for driving-enhanced superconductivity in strongly correlated lattice systems. We show that the modulation of site energies in a bipartite lattice with frequency Ω inside the charge-transfer gap U slows down electron hopping t without reducing super-exchange interactions J or pair hopping αJ (see Fig. 1). The driving breaks

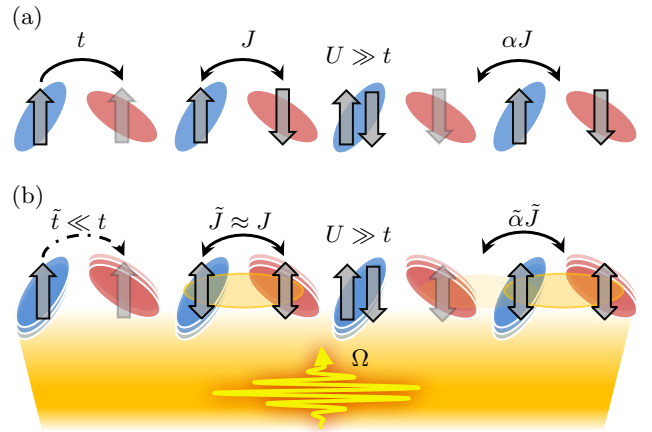


FIG. 1. (a) A bipartite chain with electron hopping t , exchange interaction J and onsite correlation $U \gg t$. Singlet pairs move through the lattice with effective hopping rate αJ . (b) Exciting on-site vibrational modes with $t < \Omega < U$ greatly suppresses hopping $\tilde{t} \ll t$, but leaves super-exchange interaction $\tilde{J} \approx J$ and pair hopping $\tilde{\alpha} J \approx \alpha J$ approximately unchanged, resulting in an enhancement of nearest-neighbour singlet pairing.

the usual relation $J \propto t^2/U$, allowing the normally subordinate J to induce a strong pairing effect, and enhance long-range pair correlations even in one spatial dimension. We find that on the moderate timescales assessed, the resulting non-equilibrium states are not significantly heated by the driving field. Instead, driving can *substantially* reduce the effective temperature of an initial thermal state on experimentally relevant timescales, akin to many-body adiabatic cooling.

Specifically, we investigate the Hubbard model in bipartite lattices with a bare hopping rate t and a large on-site interaction $U \gg t$, subjected to periodic driving of frequency Ω that modulates the on-site energy

in time τ with a spatially alternating pattern. We numerically confirm that this leads to dynamical enhancement of pairing for a one-dimensional system with realistic finite-frequency driving $t < \Omega < U$, ramped up on adiabatic and non-adiabatic time-scales, and at zero and finite initial temperatures. We also analytically study the system in Floquet theory [19–24] and derive an effective static model to provide qualitative insights into the non-equilibrium dynamics at low temperatures. Note that, in contrast to many studies using Floquet theory, Ω is not the largest frequency in our setup.

While motivated by experiments, our aim here is to explore a fundamental principle from a minimal, periodically driven, strongly-correlated model, as opposed to material-specific *ab initio* calculations. Nonetheless, organic superconductors (such as charge transfer salts) under THz driving are likely candidate systems in which the mechanism proposed here may be observed. In these materials THz pulses can resonantly excite an infrared-active local molecular vibration often located in the in-gap regime [25, 26]. The ensuing “sloshing” motion of the molecule is sufficiently large in amplitude and heavy that its leading order effect is to couple to the electronic states via a time periodic modulation of the on-site energy. These massive vibrations can therefore be considered classical oscillators for which back-action from the electronic system is safely ignored. While the laser pulse itself excites coherently and uniformly across the system, the material is assumed to possess a two-molecule unit cell [27], as in Fig. 1, so that the modulation induced on the two interlocking sub-lattices a and b differs in amplitude and/or phase. Such a unit cell might be composed of different molecules or identical molecules with differing orientations due to the stacking morphology [28]. Similar physics can be cleanly realized in optical lattices filled with ultracold fermionic atoms by “shaking” the lattice [29–31], or by exploiting Raman transitions between internal atomic states [32]. Our results provide a mechanism by which super-exchange physics may be better exposed in these systems.

This paper is organized as follows. In Sec. II we introduce the driven Hubbard model, describe the Floquet basis and work out the quasi-energies for a small system via exact numerical diagonalization. We then use time-dependent density matrix renormalisation group (DMRG) methods in Sec. III to study the real-time dynamics of the driven Hubbard model in one spatial dimension. In Sec. IV we derive an effective static model whose ground and thermal states are used to approximate the non-equilibrium states of the driven Hubbard model. Finally, we conclude in Sec. V.

II. THE DRIVEN HUBBARD MODEL

The focus of this work is the driven Hubbard model Hamiltonian (taking $\hbar = 1$)

$$\hat{H}(\tau) = \hat{H}_{\text{hub}} + \hat{H}_{\text{drive}}(\tau), \quad (1)$$

where $\hat{H}_{\text{hub}} = \hat{H}_{\text{hop}} + \hat{H}_{\text{int}}$ and contributions given by

$$\hat{H}_{\text{hop}} = -t \sum_{\langle ij \rangle \sigma} (\hat{c}_{i,\sigma}^\dagger \hat{c}_{j,\sigma} + \text{H.c.}), \quad (2)$$

$$\hat{H}_{\text{int}} = U \sum_j \hat{n}_{j,\uparrow} \hat{n}_{j,\downarrow}, \quad (3)$$

$$\begin{aligned} \hat{H}_{\text{drive}}(\tau) = & \frac{V_a}{2} \sin(\Omega\tau - \Delta\phi) \sum_{j \in a} \hat{n}_j \\ & + \frac{V_b}{2} \sin(\Omega\tau + \Delta\phi) \sum_{j \in b} \hat{n}_j. \end{aligned} \quad (4)$$

Here $\hat{c}_{i,\sigma}$ with $\sigma = \uparrow, \downarrow$ is the fermionic annihilation operator for a spin- σ electron on site j , $\hat{n}_{j,\sigma} = \hat{c}_{j,\sigma}^\dagger \hat{c}_{j,\sigma}$, $\hat{n}_j = \hat{n}_{j,\uparrow} + \hat{n}_{j,\downarrow}$, and $\langle ij \rangle$ denotes nearest-neighbour sites on a bipartite lattice composed of a and b sub-lattices. We denote the lattice filling by $\bar{n} = \sum_j \langle \hat{n}_j \rangle / L$ where L is the number of lattice sites. The hopping amplitude is t , and U the on-site Coulomb repulsion. The driving $\hat{H}_{\text{drive}}(\tau)$ describes a time τ periodic single particle Hamiltonian with driving frequency Ω , corresponding sub-lattice driving amplitudes $V_{a(b)}$, and a phase difference of $2\Delta\phi$. For simplicity we assume $V_a = V_b = V$ for the driving amplitude, which may be a function of time $V(\tau)$, and constant phase $\Delta\phi = \pi/2$ throughout the paper. However, the qualitative features of our results are expected more generally (see Appendix A). We next use a Floquet analysis to start investigating the dynamics induced by $\hat{H}(\tau)$.

A. Floquet analysis

Floquet theory [19, 21] is based on the time analog of Bloch’s theorem and is applicable here since $\hat{H}(\tau + T) = \hat{H}(\tau)$ with $T = 2\pi/\Omega$. It gives that a complete set of solutions to the time-dependent Schrödinger equation $[\hat{H}(\tau) - i\partial_\tau]|\Psi(\tau)\rangle = 0$ can then be written as $|\psi_\eta(\tau)\rangle = \exp(-i\epsilon_\eta\tau)|\phi_\eta(\tau)\rangle$. The T -periodic Floquet states $|\phi_\eta(\tau + T)\rangle = |\phi_\eta(\tau)\rangle$ are solutions to the eigenvalue equation

$$[\hat{H}(\tau) - i\partial_\tau]|\phi_\eta(\tau)\rangle = \epsilon_\eta|\phi_\eta(\tau)\rangle, \quad (5)$$

with associated real quasi-energies ϵ_η that are defined up to integer multiples of Ω . Periodicity means that the quasi-energy spectrum possesses a zone-like structure where physically distinct eigenstates lie within a quasi-energy range $E - \frac{1}{2}\Omega < \epsilon_\eta \leq E + \frac{1}{2}\Omega$, where the choice of E is arbitrary but often taken as $E = 0$.

The Hermitian Floquet Hamiltonian $\hat{H}_F = \hat{H}(\tau) - i\partial_\tau$ acts on an extended Hilbert space $\mathcal{H} \otimes \mathcal{T}$ which augments the original Hilbert space \mathcal{H} by the space \mathcal{T} of square-integrable T -periodic functions in time. This extended Hilbert space, whose elements are denoted as $|\chi\rangle\rangle$, is endowed with a suitable scalar product by time-averaging over a period T as

$$\langle\langle \chi | \xi \rangle\rangle = \frac{1}{T} \int_0^T \langle \chi(\tau) | \xi(\tau) \rangle d\tau, \quad (6)$$

where $|\chi(\tau)\rangle$ and $|\xi(\tau)\rangle$ are any T -periodic states in \mathcal{H} , and $\langle \chi(\tau) | \xi(\tau) \rangle$ is the conventional scalar product for \mathcal{H} .

We take the Fock basis $|\{n_{j,\sigma}\}\rangle$ of the lattice system, where $n_{j,\sigma}$ spin- σ electrons occupy site j , and construct an orthonormal Floquet-Fock basis of $\mathcal{H} \otimes \mathcal{T}$ as [24]

$$|\{n_{j,\sigma}\}, m\rangle\rangle = |\{n_{j,\sigma}\}\rangle e^{im\Omega\tau + i\frac{\nu}{2\Omega} \sin(\Omega\tau) (\sum_{j \in a} n_j - \sum_{j \in b} n_j)}. \quad (7)$$

These basis states include phases for the m -th Fourier component and those associated with transforming into the frame rotating with $\hat{H}_{\text{drive}}(\tau)$.

The matrix elements of the Floquet Hamiltonian \hat{H}_F in this basis are

$$\langle\langle \{n'_{j,\sigma}\}, m' | \hat{H}_F | \{n_{j,\sigma}\}, m \rangle\rangle = \zeta_{m'-m} \langle\langle \{n'_{j,\sigma}\} | \hat{H}_{\text{hop}} | \{n_{j,\sigma}\} \rangle\rangle + \delta_{m,m'} \left[\langle\langle \{n'_{j,\sigma}\} | \hat{H}_{\text{int}} | \{n_{j,\sigma}\} \rangle\rangle + m\Omega \right]. \quad (8)$$

The couplings $\zeta_{m'-m}$ are given by (also see Appendix A)

$$\zeta_{m'-m} = s^{m'-m} \mathcal{J}_{m'-m}(\nu), \quad (9)$$

where \mathcal{J}_n is the n -th order Bessel function of the first kind and $\nu = V/\Omega$. They depend on the difference in the Fourier components $m' - m$, and also on the driving parameter ν as well as the change in sub-lattice a occupation $s = \sum_{j \in a} (n'_j - n_j) = \pm 1$ for the Fock states being connected.

This matrix representation of \hat{H}_F has a natural block structure with respect to the Fourier index m labelling the Floquet sector replicas of the system. The diagonal blocks are a matrix representation of $\mathcal{J}_0(\nu)\hat{H}_{\text{hop}} + \hat{H}_{\text{int}}$ in the Fock basis, i.e. \hat{H}_{hub} with a renormalised hopping amplitude, and shifted in energy by $m\Omega$. Correspondingly, the off-diagonal blocks coupling different m sectors are a matrix representation of $\zeta_{m'-m}\hat{H}_{\text{hop}}$. In the remainder of this section we numerically investigate the Floquet Hamiltonian for a small system.

B. Small system

Using a small, numerically exactly diagonalisable one-dimensional lattice we calculate the quasi-energy spectrum ϵ_η as a function of ν from Eq. (5). We concentrate on the quasi-energy states in the $m = 0$ Floquet sector that emerge from the low-energy sector of \hat{H}_{hub} . In Fig. 2(a) the results for high-frequency driving $\Omega \gg U, t$ where the Floquet sectors are energetically well separated and decouple in a perturbative sense. The width of the spectrum initially shrinks with increasing ν indicating a reduction of the driven [33] hopping amplitude $\tilde{t} < t$, consistent with the $\zeta_0 = \mathcal{J}_0(\nu)$ dependence. It reaches a minimum for $\nu = \nu_0 \approx 2.4$ where $J_0(\nu_0) \approx 0$. For this driving strength electron hopping \tilde{t} and the super-exchange \tilde{J} are both fully suppressed. The dynamics of the system are

therefore frozen, as signified by the collapse of the spectrum to a $\epsilon_\eta = 0$ degeneracy at ν_0 . With further increases of ν the hopping amplitude \tilde{t} becomes negative, and the quasi-energy spectrum correspondingly broadens. These features are all a well known single-particle effect that has been demonstrated experimentally, e.g. in optical lattices [31].

A qualitatively different result occurs for in-gap driving $t < \Omega < U$, as shown in Fig. 2(b). The quasi-spectrum is again seen to reduce in bandwidth with increasing ν initially, indicating that \tilde{t} is still being suppressed. However, in contrast to high-frequency limit the spectrum retains a finite width proportional to $J = 4t^2/U$ and is shifted down by approximately J , even when $\nu \approx \nu_0$. Rather than being frozen out, the dynamics in this driving regime are now being governed by the normally subordinate super-exchange energy $\tilde{J} \approx J$ that appears to be unsuppressed. This observation motivates the further numerical studies presented in the next section. There we gather evidence that the driven system has an increased susceptibility to pair formation and long-range correlations for driving $\nu \lesssim \nu_0$. This then leads us to derive an effective static t - J model that describes the singlet-pair dynamics in the driven state with good accuracy even for strong driving $\nu > 1$.

III. DRIVING ENHANCED FERMION PAIRING

We consider an L site one dimensional driven Hubbard model with open boundary conditions, and study directly its real-time dynamics when slowly ramping up the driving amplitude, first at zero and then at finite temperature. Our numerics are based on highly accurate time-dependent DMRG methods [34–36] as implemented in the Tensor Network Theory (TNT) Library [37] and are described in more detail in Appendix C.

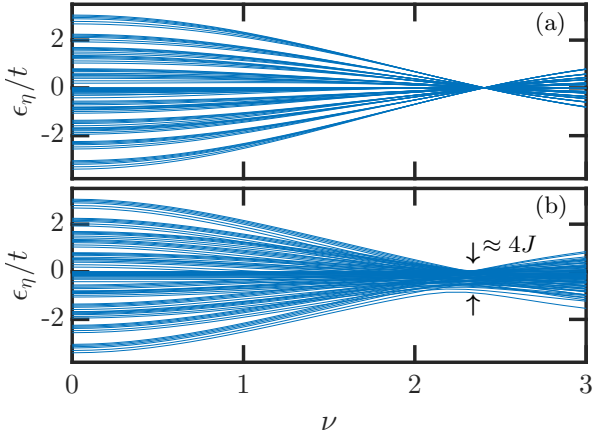


FIG. 2. The singly-occupied subspace of the Floquet quasi-energy spectrum ϵ_η , computed exactly for $L = 6$ sites, with 2 up electrons and 2 down electrons. In (a), where $\Omega = 100t$, $U = 20t$, the quasi-energy spectrum collapses to a single point at $\nu_0 \approx 2.4$, signalling complete suppression of t relative to U . In (b), where $\Omega = 6t$, and $U = 20t$, the spectrum does not collapse to a point, but instead strongly resembles the spectrum of a t - J Hamiltonian with $\tilde{J} > \tilde{t}$.

A. Zero temperature

We calculate the real-time dynamics of a quarter-filled system starting from the ground state and ramping up the driving amplitude with in-gap driving frequency $t < \Omega < U$. We characterise the driving induced non-equilibrium state $|\psi(\tau)\rangle$ by studying its density-density correlations

$$N_{ij}(\tau) = \langle \hat{n}_i \hat{n}_j \rangle - \langle \hat{n}_i \rangle \langle \hat{n}_j \rangle,$$

the spin-spin correlations

$$S_{ij}(\tau) = \langle \hat{S}_i^z \hat{S}_j^z \rangle,$$

with $\hat{S}_i^z = (\hat{n}_{i,\uparrow} - \hat{n}_{i,\downarrow})/2$, and the nearest-neighbour singlet-pairing correlations

$$P_{ij}(\tau) = \langle \hat{b}_{i,i+1}^\dagger \hat{b}_{j,j+1} \rangle.$$

Here the operators \hat{b}_{ij}^\dagger (\hat{b}_{ij}), given by

$$\hat{b}_{ij}^\dagger = \frac{1}{\sqrt{2}} (\hat{c}_{i,\uparrow}^\dagger \hat{c}_{j,\downarrow}^\dagger - \hat{c}_{i,\downarrow}^\dagger \hat{c}_{j,\uparrow}^\dagger), \quad (10)$$

create (annihilate) a singlet electron pair at sites i and j , and $\langle \cdot \rangle = \langle \psi(\tau) | \cdot | \psi(\tau) \rangle$. We mostly concern ourselves with the corresponding structure factors,

$$X(q) = \frac{1}{L} \sum_{jk} X_{jk} e^{iq(j-k)}, \quad (11)$$

where X is any of N , S or P , and q is the dimensionless quasi-momentum.

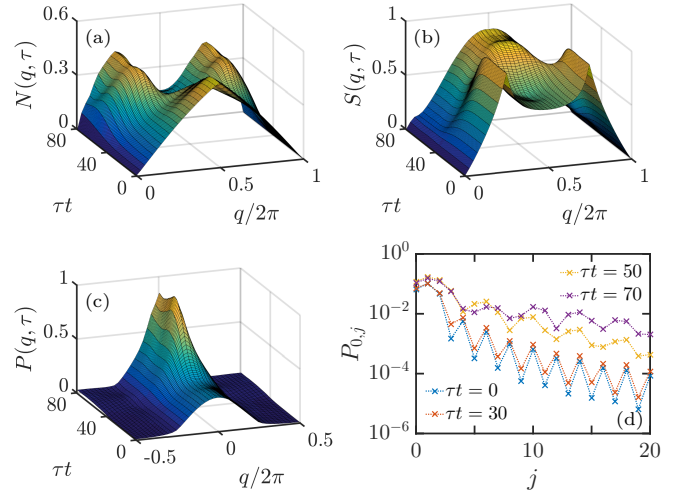


FIG. 3. A quarter-filled ($\bar{n} = 1/2$) Hubbard chain with $L = 40$ sites, $U = 20t$ and driving frequency $\Omega = 6t$. The driving amplitude is ramped according to $\nu(\tau) = (\nu(\infty)/2) [\tanh((\tau - \tau_0)/\tau_r) + 1]$ with final driving strength $\nu(\infty) = 2.2$, ramp time $\tau_r = 12.5/t$, and $\tau_0 = 25/t$. The plots show (a) the density-density structure factor $N(q, \tau)$, (b) the spin structure factor $S(q, \tau)$ and (c) the singlet pairing structure factor $P(q, \tau)$ as a function of quasi-momentum q and time τ . In (a)–(c) we have averaged over the frequency Ω oscillations, e.g. that are visible in the line-outs shown in Fig. 4(a). Residual low frequency oscillations in these quantities are due to the finite ramping time τ_r . In (d) the real-space pairing correlation function $P_{0,j}$ relative to the left boundary $j = 0$ at various time slices is shown.

We plot the density structure factor $N(q, \tau)$ in Fig. 3(a). The initial kink at $q = 4k_F$, where $k_F = \bar{n}\pi/2$ is the non-interacting Fermi wave-vector for the quarter filled system, is suppressed in favour of peaks at $q = \pm 2k_F$ as the driving increases. This signifies a doubling of the wavelength of Friedel oscillations in the system and is an indication for the formation of bound pairs. We interpret the slope of $N(q, \tau)$ as $q \rightarrow 0$ as a dynamical version of the Luttinger parameter $K_\rho(\tau)$ [38]. In equilibrium $N(q) \approx K_\rho q/\pi$ [39, 40], and in Fig. 3(a) it is apparent that the gradient around $q = 0$ increases at later times corresponding to an increase in $K_\rho(\tau)$. Eventually exceeds $K_\rho(\tau) > 1$ signifying the formation of an attractive Luttinger liquid.

The spin structure factor, shown in Fig. 3(b), begins with sharp peaks at $2k_F$, indicating that the Hubbard ground state has a tendency towards antiferromagnetic order. At quarter-filling, this order is incommensurate with the lattice period. In the presence of periodic driving the initial peaks are suppressed and instead a peak at $q = \pi$ forms, consistent with the formation of islands of commensurate antiferromagnetic order. The broadness of this emerging peak shows that the underlying order is not quasi-long-ranged yet. Indeed, its form is similar to

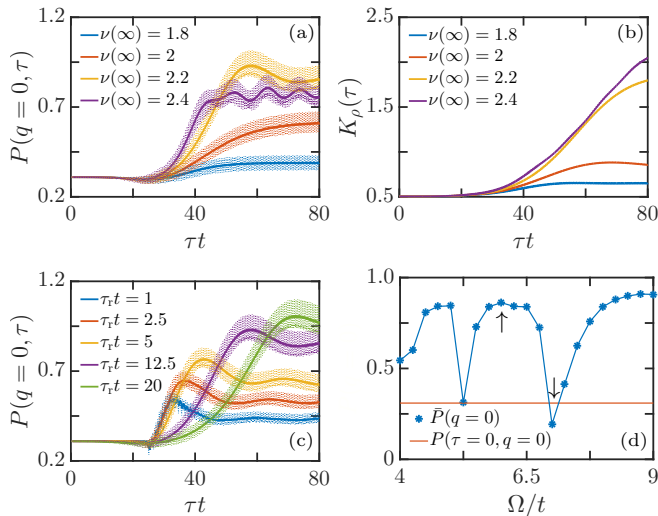


FIG. 4. (a) The height of the singlet structure factor peak $P(q=0, \tau)$ at various final driving strengths. The instantaneous value is indicated by a dotted line, while the moving time average is denoted by a solid line. (b) The dynamical Luttinger parameter $K_\rho(\tau)$ extracted from the slope of $N(q, \tau)$ at $q \rightarrow 0$. (c) The peak of the singlet structure factor $P(q=0, \tau)$ for various ramp times. (d) The final height of the singlet structure factor averaged from $\tau = 60/t$ to $80/t$, $\bar{P}(q=0)$ as a function of the driving frequency Ω . The solid blue line is drawn to guide the eye. Arrows mark frequencies $\Omega = 6$ and $\Omega = 7$. All parameters not explicitly given in the plots are the same as in Fig. 3.

$S(q) = \bar{n}(1 - \cos q)$ expected for a gas of free nearest-neighbour singlet pairs [41].

We obtain the most direct evidence of pairing via the singlet structure factor, and in particular its uniform $P(q=0, \tau)$ component which contains contributions from both long-range and short-range correlations. In Fig. 3(c) a broad peak about $q=0$ is seen initially, which under driving eventually increases in magnitude by a factor of more than three, and sharpens. This is consistent with $K_\rho(\tau) > 1$ and suggests that the driving has formed a quasi-condensate of singlet pairs in momentum space. To isolate the long-range contribution to $P(q=0, \tau)$ we examine the real-space singlet correlations in Fig. 3(d). These correlations confirm a suppression of $2k_F$ modulations at short times followed by a significant enhancement of the quasi-long range pairing order at longer times when the driving has reached its final strength.

In Fig. 4 we demonstrate the robustness of the pairing dynamics for different driving parameters. As shown in Fig. 4(a) the magnitude of $P(q=0, \tau)$ oscillates with frequency Ω about a mean value which is greatly enhanced with increasing driving strength ν as long as $\nu < \nu_0$. The dynamical Luttinger parameter displayed in Fig. 4(b) increases with driving and exceeds unity for sufficiently

strong driving. This suggests the onset of attractive interactions within the system. However, for the largest final driving strengths $\nu(\infty) \approx \nu_0$, where the tunneling is suppressed most strongly, $P(q=0, \tau)$ reaches a maximum height at intermediate times and then reduces. This behaviour is indicative of the pair state being unstable to decay towards a resonating valence bond (RVB) type state as we will discuss in detail in the next section.

The dependence of $P(q=0, \tau)$ on the ramping time τ_r is shown in Fig. 4(c). Roughly speaking the ramp is expected to cross over to adiabatic when the time-derivative of its amplitude $\dot{\nu} \approx \nu(\infty)/\tau_r \approx J$, i.e. when it is sufficiently smaller than the dominant energy scale of the final Hamiltonian. This is not satisfied for the fastest ramps shown in Fig. 4(c), yet within their ramping profile a moderate enhancement of the pairing is still induced and is sustained for longer times. For the slowest ramps considered the increases in the enhancement begin to saturate, suggesting they are close to adiabatic for this system.

In Fig. 4(d) we show the final pairing enhancement as a function of driving frequency. A number of resonance dips are seen where no singlet-pairing enhancement is observed. The origin of these is traced back to level crossings in the Floquet quasi-energy spectrum as the ramp is traversed, which is discussed in more detail in Appendix B. In short, at these frequencies $m > 0$ Floquet replicas of the upper Hubbard band, composed of states containing high-energy doubly occupied configurations, cross the $m=0$ lower Hubbard band, composed of states with predominantly singly-occupied configurations. As a result the driving induces resonant transitions between these states and $m\Omega$ of energy is absorbed, causing the system to heat up. However, away from these resonances the substantial enhancement reported for $\Omega = 6t$ is observed over a wide range of frequencies $\Omega < U$.

B. Finite temperature

The relevance of our observations at zero temperature to real materials hinges on whether this effect survives at finite temperatures. To answer this we use the finite-temperature extension to time-dependent DMRG [42, 43] working in the grand canonical ensemble and introducing a chemical potential μ to fix the average filling \bar{n} . We then compute the coherent evolution with periodic driving via $\hat{H}(\tau)$ for an initial thermal state of \hat{H}_{hub} at inverse temperature β .

Figure 5(a) shows that enhanced pairing persists at finite temperature, albeit with a peak of reduced height and broadened width compared to the zero temperature case. In Fig. 5(b), we show the singlet structure factor $P(q=0, \tau)$ as a function of time for various initial values of β . Perhaps counterintuitively, the driven state consistently exhibits enhanced singlet pairing correlations even when the initial temperature $1/\beta \sim t \gg J$ far exceeds the pair binding energy. In the next section we will intro-

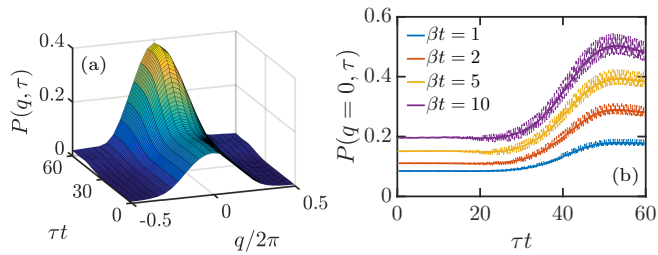


FIG. 5. (a) The singlet structure factor $P(q, \tau)$ with an initial temperature $\beta = 5/t$. As in Fig. 3, we have averaged over the frequency Ω oscillations. (b) The height of the peak $P(q = 0, \tau)$, for several initial temperatures β . The dotted line shows the instantaneous value, while the solid line shows the moving time average. These results were computed for $L = 24$ sites. All other parameters not explicitly given in the plots are the same as in Fig. 3.

duce an effective time-independent model to qualitatively capture all the physics underlying the numerical results discussed so far. In the context of this effective model the thermal enhancement can be viewed as a many-body version of adiabatic cooling.

The reason for this is already apparent from Fig. 2(b). As the driving amplitude ν approaches ν_0 , the bandwidth of the quasi-energy spectrum in the $m = 0$ Floquet sector is squashed. This is described by changes in the effective model's parameters with ν , and from Fig. 4(c) we saw that for sufficiently slow ramping, $\dot{\nu} \ll J$, this change will be adiabatic. Consequently, the driving is substantially reducing the energy gaps between the many-body eigenstates of this model while keeping their thermal populations unchanged. Therefore the driven state remains approximately thermal, but at a significantly lower temperature. A similar effect is used in cold-atom systems, where an adiabatic increase of the lattice depth results in a lowering of the temperature [44]. Indeed it has been shown that even for instantaneous quenches, one can obtain cooling in a wide variety of physical systems [45].

IV. EFFECTIVE t - J MODEL

The numerical results presented in the previous section indicate that super-exchange interaction J and pair hopping αJ , as in Fig. 1, play a significant role in the driven dynamics when $t < \Omega < U$. Moreover, from our calculations we find (see Fig. 7(b)) that the negligible double occupation in the initial state remains small in the driven state, once Ω does not coincide with any resonance. This suggests that an effective t - J model may represent an adequate foundation for a Floquet analysis in this driving regime [46]. The t - J model arises from \hat{H}_{hub} by perturbatively projecting double occupancies out via the stan-

dard approach [47] to yield

$$\hat{H}_{tJ\alpha} = \mathbb{P}_0 \left[\hat{H}_{\text{hop}} + \hat{H}_{\text{ex}} + \hat{H}_{\text{pair}} \right] \mathbb{P}_0, \quad (12)$$

with super-exchange and pair hopping contributions

$$\hat{H}_{\text{ex}} = -J \sum_{\langle ij \rangle} \hat{b}_{ij}^\dagger \hat{b}_{ij}, \quad (13)$$

$$\hat{H}_{\text{pair}} = -\alpha J \sum_{\langle ijk \rangle} \left(\hat{b}_{ij}^\dagger \hat{b}_{jk} + \text{H.c.} \right). \quad (14)$$

Here, the operator $\mathbb{P}_0 = \prod_{j=1}^L (1 - \hat{n}_{j,\uparrow} \hat{n}_{j,\downarrow})$ projects onto the subspace of Fock states without any double occupancies. The bracket $\langle ijk \rangle$ denotes sums over nearest neighbour sites, not double-counting bonds. The two-site super-exchange \hat{H}_{ex} term binds nearest-neighbour singlet pairs together with an energy J . Correspondingly, the three-site pair hopping term \hat{H}_{pair} describes the motion of these pairs without breaking their bond.

In equilibrium the parameters of the t - J model Hamiltonian $\hat{H}_{tJ\alpha}$ relate to the original Hubbard model through $J = 4t^2/U$ and $\alpha = 1/2$. The validity of the t - J model relies on the strongly interacting limit $t \ll U$, and thus mandates $J \ll t$. We now proceed with a Floquet analysis of the driven t - J Hamiltonian defined as

$$\hat{H}'(\tau) = \hat{H}_{tJ\alpha} + \mathbb{P}_0 \hat{H}_{\text{drive}}(\tau) \mathbb{P}_0, \quad (15)$$

identical to that described in Sec. II A. Removing U as an explicit energy scale is tantamount to taking $U \rightarrow \infty$, and allows us to examine the behaviour with Ω , while continually enforcing that $U > \Omega$. This approach will provide us with a simple, intuitive picture of the physics for in-gap driving. A more accurate description, handling the interplay between finite U and Ω , is contained in the Appendix D and corroborates this picture.

A. Floquet analysis

By calculating a matrix representation of the Floquet Hamiltonian for the driven t - J model $\hat{H}'(\tau)$, using the Floquet basis introduced in II A, we immediately find that the diagonal blocks are given by the matrix representation of $\mathbb{P}_0 [\mathcal{J}_0(\nu) \hat{H}_{\text{hop}} + \hat{H}_{\text{ex}} + \hat{H}_{\text{pair}}] \mathbb{P}_0$. Thus, the hopping is still suppressed, while the driving dependent phase factors in the Floquet basis cancel out for \hat{H}_{ex} and \hat{H}_{pair} , as they did for \hat{H}_{int} in the driven Hubbard model, leaving these terms unaffected. Assuming $\Omega \gg t$, so the Floquet sectors decouple, we find that the effective Hamiltonian describing the $m = 0$ sector is a t - J model with $\tilde{t} = \mathcal{J}_0(\nu)t$, $\tilde{J} = J$ and $\tilde{\alpha} = \alpha$. The ratio \tilde{J}/\tilde{t} therefore becomes strongly driving dependent

$$\tilde{J}/\tilde{t} = \frac{4t}{U \mathcal{J}_0(\nu)}. \quad (16)$$

The driven system therefore breaks the usual relation $J = 4t^2/U \ll t$ and allows the realisation of the regime

$\tilde{J}/\tilde{t} \gg 1$ that is normally inaccessible. Consequently, a slow increase in the driving strength $\dot{\nu} \ll J$ corresponds to adiabatically moving through the phase diagram of the t - J model into this new parameter regime. For this reason, we now examine the equilibrium properties of this effective model and compare them to the driven steady states obtained in Sec. III.

B. Phase diagram of t - J model

In one-dimension the ground state of the t - J model, for any $\tilde{\alpha}$ and below half-filling $\tilde{n} < 1$, is metallic with $K_\rho = 0.5$ as $\tilde{J}/\tilde{t} \rightarrow 0$. As \tilde{J}/\tilde{t} increases and K_ρ also increases monotonically. When the hopping \tilde{t} is quenched by the driving the remaining terms $\tilde{H}_{\text{ex}} + \tilde{H}_{\text{pair}}$ together resemble a Hamiltonian for hard-core bosons [48]. This similarity suggests that for sufficiently large \tilde{J}/\tilde{t} superexchange mediates the formation of nearest-neighbour singlet pairs with binding energy $-\tilde{J}$ and pair hopping gives them a bandwidth proportional to $\tilde{\alpha}\tilde{J}$. This is consistent with the form of the quasi-energy spectrum near $\nu \approx \nu_0$ shown in Fig. 2(b).

The pairing effect is captured by simple energetic arguments. Solving the two electron problem the binding energy of nearest-neighbour singlet pairs is given by [49]

$$E_{\text{pair}} = -\tilde{J} - 2\tilde{\alpha}\tilde{J} - \frac{4\tilde{t}^2}{\tilde{J} + 2\tilde{\alpha}\tilde{J}}. \quad (17)$$

Thus, in the dilute limit, comparing E_{pair} to the energy for two free electrons $E_{\text{free}} = -4\tilde{t}$, suggests that pair formation will occur for $\tilde{J}/\tilde{t} \geq 2/(1+2\tilde{\alpha})$. These nearest-neighbour singlet pairs subsequently quasi-condense to form a superconductor, characterised by dominant quasi-long-range singlet pair correlations [50]

$$\langle \hat{b}_{j+x,j+1+x}^\dagger \hat{b}_{j,j+1} \rangle \sim x^{-(1+1/K_\rho)}, \quad (18)$$

with $K_\rho > 1$ signifying an attractive Luttinger liquid.

For yet larger \tilde{J}/\tilde{t} , the formation of phase-separated electron-rich and hole-rich regions signalled by a diverging K_ρ might be expected [40]. The exact solution of a Heisenberg spin-chain gives the antiferromagnetic bond energy $E_{\text{bonds}} = -2\tilde{J} \ln(2)$. For $\tilde{\alpha} = 1/2$ we see that $E_{\text{pair}} < E_{\text{bonds}}$ for all values of \tilde{J}/\tilde{t} , meaning that singlet pairs will *never* freeze into larger antiferromagnetic clusters. The pair hopping term destabilises antiferromagnetic clusters, even when $\tilde{J}/\tilde{t} \gg 1$, since it homogenises holes throughout the system akin to hole repulsion. However, for $\tilde{n} \geq 0.5$ superconductivity is not expected to persist up to $\tilde{J}/\tilde{t} \rightarrow \infty$. Instead an RVB ‘‘singlet gas’’ appears with short-ranged pair correlations. This picture of the equilibrium properties of the 1D t - J model is borne out by comprehensive exact diagonalization [51], DMRG [40] and quantum Monte Carlo calculations [49].

The numerical results displayed in Fig. 3, Fig. 4 are broadly consistent with these equilibrium properties of

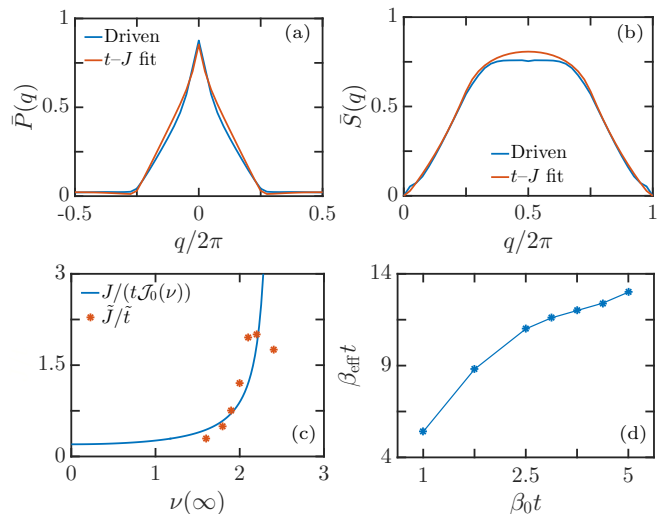


FIG. 6. The time average between $\tau t = 60 - 80$ of the driven state’s structure factors for (a) singlet pairing $\bar{P}(q)$ and (b) spin $\bar{S}(q)$ from Fig. 3(b)–(c) are shown alongside the same quantities for a t - J ground state with $\tilde{\alpha} = 1/2$ and a \tilde{J}/\tilde{t} that gives the closest match to $\bar{P}(q)$. For $\nu(\infty) = 2.2$, the effective $\tilde{J}/\tilde{t} = 2.0$. Repeating this fit for the sequence of driving strengths ν shown in Fig. 4(a) gives \tilde{J}/\tilde{t} plotted in (c), with the solid curve reporting the prediction of Eq. (16). In (d) $\bar{P}(q)$ of the driven initial thermal state at inverse temperature β_0 was compared to t - J model thermal states, with $\tilde{J} = J$ fixed to its equilibrium value and the ratio \tilde{J}/\tilde{t} fixed by the results in Fig. 6(c), to extract an effective inverse temperature β_{eff} . A solid line is drawn to guide the eye.

the t - J model spanning a wide range of \tilde{J}/\tilde{t} values. In particular we may now attribute the increased peak height $P(q=0, \tau)$ and emergence of quasi-longer-ranged pair correlations to the driving elevating \tilde{J}/\tilde{t} sufficiently to near-adiabatically transition the system from its initial metallic phase into the superconducting phase. This comparison is made more quantitatively in Fig. 6(a)–(b) where the singlet pairing and spin structure factors from Fig. 3(b)–(c) are closely matched to those of a t - J model superconducting ground state with $\tilde{J}/\tilde{t} \approx 2$. For stronger driving strengths $\nu \rightarrow \nu_0$, where $\tilde{J}/\tilde{t} \gg 1$, the transition to an RVB singlet gas is evidenced by less pronounced increases in $P(q=0, \tau)$ and short-ranged correlations.

By repeating the fitting of the zero temperature driven state singlet correlations to a t - J model ground state, we extract the effective value of \tilde{J}/\tilde{t} as a function of driving strength ν . The results in Fig. 6(c) show decent agreement with Eq. (16), and indicate that the superconducting phase can be reached with $\nu(\infty) \approx 2$. We also fit the singlet structure factors of the driven state obtained from a finite initial temperature to thermal states of the t - J model to obtain an effective temperature $\tilde{\beta}$. The results, shown in Fig. 6(d) show that the driving substantially decreases the effective temperature, confirming our interpretation as adiabatically cooling the system.

C. Floquet heating

In general, periodic driving of a generic many-body system is expected to cause so-called Floquet heating, even far away from resonances. Finite Ω corrections are expected to result in the system being described by an effective Hamiltonian possessing non-negligible “unphysical” terms that are both spatially non-local and multi-body. Eigenstates of such a Hamiltonian will be highly delocalised in the eigenbasis of more physical short-ranged few-body Hamiltonians, like the Hubbard and t - J models. Thus the eigenstate thermalisation hypothesis (ETH) [52–54] suggests that in the asymptotic long-time limit, independent on its initial state, any finite frequency drive results in all physical observables of the system becoming indistinguishable from those of a featureless infinite temperature state [55–57]. However, the ETH does not predict the rate of Floquet heating [58].

Despite operating in a finite frequency driving regime on the accessible simulation times the numerical results presented here do not display significant heating effects. The time-averaged correlations emerging from the driven Hubbard model, while possessing some small quantitative discrepancies e.g. in Fig. 6(a)–(b), are nonetheless well captured by an effective t - J model rather than a more pathological Hamiltonian. This suggests that the Floquet heating rate is small and that our findings are instead consistent with the notion of prethermalisation in driven systems [59–62].

To examine the Floquet heating rate further we compute the half-chain entanglement entropy for the zero temperature case, as shown in Fig. 7(b). As expected it increases with time indicating that the driven state is becoming increasingly entangled compared to the initial Hubbard ground state. However, it increases roughly linearly with a rate indicating that saturation to the maximum entropy of an infinite temperature state would take on the order of 10^3 hopping times. Indeed, it is precisely because the driven state remains weakly entangled that allows our simulations to accurately track its dynamics for many 10 's of hopping times. When the system is driven through the $\Omega = 7t$ resonance shown in Fig. 4(d), the entropy grows more rapidly, indicating significant heating. This is corroborated in Fig. 7(b), where driving through the resonance results in a large increase in the number of double occupancies, in contrast with the $\Omega = 6$ drive, which avoids such resonances and maintains a small double-occupancy.

The appearance of very slow Floquet heating rates for generic many-body systems was examined in several recent studies [63–66]. They show that an effective static Hamiltonian \hat{H}_* will describe the system up to times $\tau < \tau_*$ where $\tau_* \propto \exp(C\Omega/\varepsilon)$. Here C is a numerical constant of order unity and ε is an energy scale bounding the terms in the driven Hamiltonian [64]. Our results suggest that for in-gap driving $\varepsilon \sim t$ giving a broad time window in which the system is described by an \hat{H}_* . This effective Hamiltonian may not be exactly a t - J model,

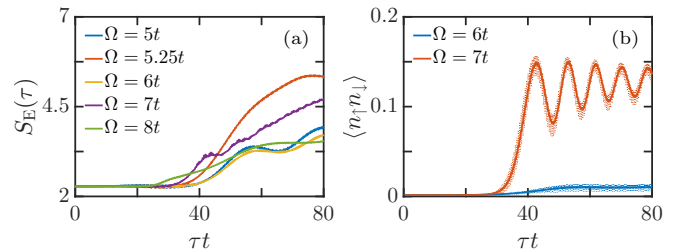


FIG. 7. (a) The half-chain entanglement entropy S_E as a function of time, computed with the same parameters as in Fig. 4(d) is shown. Here an MPS bond dimension $\chi = 800$ was used which supports a maximum half-chain entanglement entropy of $S_E^{\max} \approx 9.64$. (b) The average double-occupancy per site $\langle n_\uparrow n_\downarrow \rangle$ computed using the same parameters as in Fig. 4(d) is plotted. The dotted line shows the instantaneous value, while the solid line shows the moving time average. The two frequencies shown here correspond to the arrows drawn in Fig. 4(d).

but it nonetheless shares essential physical features, such as supporting a superconducting phase.

V. CONCLUSIONS

We have shown that periodic in-gap driving of a strongly-correlated electronic system can slow the electrons down enough to make the normally subordinate super-exchange interaction the dominant energy scale. This effect manifests itself in a many-body one-dimensional setting as a distinct switching of pair correlations. We showed that the driven state is similar to what would be expected if $J/t \rightarrow \tilde{J}/\tilde{t} > 1$ was enhanced to values which are considered unphysical in thermal equilibrium. Furthermore, these effects were found to be robust to finite ramp times of the driving and finite initial temperatures. Our future experimental and theory work is likely to focus on higher dimensional systems where dynamically enhanced pairing is expected to emerge at smaller values of \tilde{J}/\tilde{t} [67]. The inclusion of competing instabilities, such as charge-density-waves, and the interplay of driving with dissipation [68, 69], could then provide a fuller picture of this route to engineering light-induced superconducting states in quantum materials.

ACKNOWLEDGEMENTS

This research is funded by the European Research Council under the European Union’s Seventh Framework Programme (FP7/2007–2013)/ERC Grant Agreement no. 319286 Q-MAC. S.A. acknowledges support from the EPSRC Tensor Network Theory grant (EP/K038311/1).

Appendix A: Floquet Hamiltonian coupling

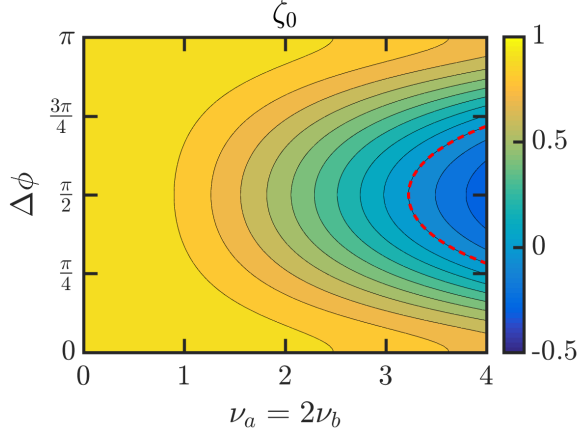


FIG. 8. The coefficient ζ_0 with unequal a and b driving strengths as a function of ν_a and $\Delta\phi$. The contour line $\zeta_0 = 0$ is highlighted in red.

In the main text we concentrated on the special case of driving with $V_a = V_b = V$ and constant phase $\Delta\phi = \pi/2$. Here we go back to the general driving \hat{H}_{drive} given in Eq. (4) and define the Floquet-Fock basis as

$$|\{n_{j,\sigma}\}, m\rangle = |\{n_{j,\sigma}\}\rangle \exp[i m \Omega \tau] \quad (\text{A1})$$

$$\times \exp\left[-i \Delta_a(\tau) \sum_{j \in a} n_j - i \Delta_b(\tau) \sum_{j \in b} n_j\right],$$

where m is the Fourier component and

$$\Delta_a(\tau) = -\frac{V_a}{2\Omega} \cos(\Omega\tau - \Delta\phi),$$

$$\Delta_b(\tau) = -\frac{V_b}{2\Omega} \cos(\Omega\tau + \Delta\phi). \quad (\text{A2})$$

The Floquet Hamiltonian is defined by the eigenvalue problem Eq. (5) which in the basis Eq. (A1) becomes

$$[\hat{H}(\tau) - i\partial_\tau] |\{n_{j,\sigma}\}, m\rangle = [\hat{H}_{\text{hop}} + \hat{H}_{\text{int}} + m\Omega\mathbb{1}] |\{n_{j,\sigma}\}, m\rangle.$$

We then use the extended scalar product Eq. (6) to evaluate the righthand side as $\langle\langle \{n'_{j,\sigma}\}, m' | \hat{H}_{\text{hop}} + \hat{H}_{\text{int}} + m\Omega\mathbb{1} | \{n_{j,\sigma}\}, m \rangle\rangle$. The last two terms are diagonal in the Floquet-Fock basis so all the non-trivial physics is contained in the hopping matrix elements. These are given by

$$\langle\langle \{n'_{j,\sigma}\}, m' | \hat{H}_{\text{hop}} | \{n_{j,\sigma}\}, m \rangle\rangle = \frac{1}{T} \int_0^T \exp[i(m - m')\Omega\tau + is\Delta_a(\tau) - is\Delta_b(\tau)] d\tau \langle\{n'_{j,\sigma}\} | \hat{H}_{\text{hop}} | \{n_{j,\sigma}\}\rangle, \quad (\text{A3})$$

$$= \zeta_{m'-m} \langle\{n'_{j,\sigma}\} | \hat{H}_{\text{hop}} | \{n_{j,\sigma}\}\rangle. \quad (\text{A4})$$

Here we have used that $\langle\{n'_{j,\sigma}\} | \hat{H}_{\text{hop}} | \{n_{j,\sigma}\}\rangle$ is non-zero only when an electron (of either spin) moves from a site in sub-lattice a to a site in sub-lattice b , or the reverse. Thus we can denote the change in the occupation of sub-lattice a as $\sum_{j \in a} (n'_j - n_j) = s$, and we know that the change in occupation of sub-lattice b is $\sum_{j \in b} (n'_j - n_j) = -s$, with $s = \pm 1$. The Floquet coupling coefficient $\zeta_{m'-m}$ depends not only on the Fourier components but also on the parameters of the driving $V_a, V_b, \Delta\phi, \Omega$ and the Fock states being connected via s . To evaluate $\zeta_{m'-m}$ we first expand $\Delta_a(\tau) - \Delta_b(\tau)$ as

$$\Delta_a(\tau) - \Delta_b(\tau) = \frac{(V_a + V_b)}{2\Omega} \sin(\Omega\tau) \sin(\Delta\phi) - \frac{(V_a - V_b)}{2\Omega} \cos(\Omega\tau) \cos(\Delta\phi). \quad (\text{A5})$$

Next we use a Jacobi-Anger expansion to breakup the exponentials of trigonometric functions and perform the time-averaging integration to obtain

$$\zeta_{m'-m} = \sum_{n=-\infty}^{\infty} (-i)^n J_n \left(s \frac{(V_a - V_b)}{2\Omega} \cos(\Delta\phi) \right) \sum_{n'=-\infty}^{\infty} J_{n'} \left(s \frac{(V_a + V_b)}{2\Omega} \sin(\Delta\phi) \right) \delta_{n+n', m'-m}. \quad (\text{A6})$$

This coupling appears in the Floquet Hamiltonian in Eq. (8) for the most general driving parameters. For the special case used in the main text, $V_a = V_b = V$ and $\Delta\phi = \pi/2$, this reduces $\zeta_{m'-m}$ in Eq. (A6) to that given

in Eq. (9). However, note that Eq. (A6) displays suppression of the hopping for a much wider range of driving parameters than this special case. As an example, in Fig. 8 we take $\nu_a = V_a/\Omega = 2\nu_b$ and plot ζ_0 , the hopping sup-

pression factor in the limit $U \rightarrow \infty$, $\Omega \rightarrow \infty$, $U/\Omega < 1$. This shows that the hopping can still be suppressed to zero even in the case where $\nu_a \neq \nu_b$ and $\Delta\phi \neq \pi/2$.

Appendix B: Crossings in the Floquet Spectrum

As seen in Fig. 4(d), there are several resonance frequencies at which pairing (and indeed all correlations) are destroyed rather than enhanced by the driving. This can be understood by looking at the Floquet quasi-energy spectrum. Since the spectrum is periodic high energy states in the upper Hubbard band are folded down into the first Brillouin zone $-\Omega/2 < U - m\Omega < \Omega/2$, as shown in Fig. 9 for a small system. For $\Omega = 6t$ folded upper Hubbard band states do not intersect the lower Hubbard band portion of the spectrum, and so a sufficiently slow ramp will adiabatically follow the Floquet state connected to the undriven ground state. However, in for the $\Omega = 7t$ case, there is a level-crossing between these bands. Similar crossings are found for the other resonance frequencies in Fig. 4(d). By driving through these crossings strong excitation of states in the upper Hubbard band are expected that effectively heat up the system and destroy correlations. Indeed for the larger system this is what is shown in Fig. 7(b) where driving at $\Omega = 7t$ is found to result in 10 times larger increase in the average density of double occupancies than driving at $\Omega = 6t$. The smallness of the latter case supports our interpretation of the driven system with an effective t - J model.

Appendix C: Details on numerical calculations

For the zero temperature calculations, we computed the ground state of the Hubbard system using standard DMRG [34, 70], with an matrix product state (MPS) bond dimension of $\chi = 300$. We then evolved this ground state under the Hamiltonian $\hat{H}(\tau)$ using time-evolving block decimation (TEBD) algorithm [36], computing the expectation values given in Sec. III A.

To accurately capture the driven state our TEBD calculations were performed with MPS bond dimensions up to $\chi = 1600$ and a timestep $\Delta\tau = 0.01/t$. To resolve the fast oscillations in the correlation functions, they were sampled every 5 timesteps. Increasing χ and decreasing $\Delta\tau$ were found to have negligible effect on the correlation functions, and the cumulative truncation error during the time-evolution remained small.

To measure of the amount of Floquet heating in our system, we compute the entanglement entropy at the central MPS bond, defined as

$$S_E(\tau) = -\text{Tr} [\rho_{0,L/2}(\tau) \log_2(\rho_{0,L/2}(\tau))], \quad (\text{C1})$$

where $\rho_{0,L/2}$ is the reduced density matrix for the left half of the system. The behaviour of $S_E(\tau)$ is shown in

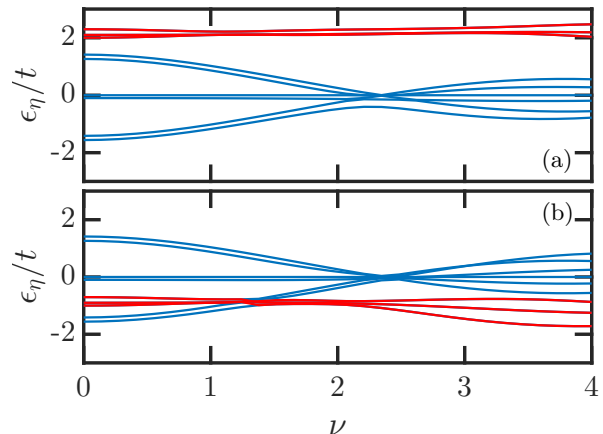


FIG. 9. The Floquet spectrum ϵ_η for an $L = 6$ site system with $U = 20t$, $\Delta\phi = \pi$. The doubly-occupied levels are drawn in red, the singly-occupied are drawn in blue. In (a), $\Omega = 6t$, and there are no crossings between singly and doubly-occupied states. In (b), $\Omega = 7t$ and, we observe a crossing between the upper and lower Hubbard bands. The two frequencies shown here correspond to the arrows drawn in Fig. 4(d).

Fig. 7(a) for various driving frequencies. After ramping up the driving the entanglement entropy grows in time. The largest growth is seen for $\Omega = 5.25t$ and $\Omega = 7t$ that were identified already in Fig. 4(d) as Floquet resonances. The elevated heating makes these frequencies more difficult to capture with an MPS ansatz due to a rapid growth of truncation error after the ramp [71]. The growth in $S_E(\tau)$ for the other frequencies, that are away from the resonances, are broadly similar to each other and smaller. The rate of growth of $S_E(\tau)$, indicative of the rate of Floquet heating, appears to be very slow on the timescales considered. Linearly extrapolating the entropy predicts that a time on the order of $10^3/t$ is needed for $S_E(\tau)$ to saturate at the maximum entropy at quarter filling of $S_{\beta=0} = 38.47$.

For the finite temperature calculations, we obtained thermal states of the Hubbard model via imaginary-time TEBD. An initial matrix product operator (MPO) representation of the identity matrix (i.e. an infinite temperature state) was evolved in imaginary time with a timestep $\Delta\beta = 0.01/t$ to obtain an MPO representation of the desired thermal mixed state [43]. We introduced a chemical potential μ to our Hamiltonian, and tuned this to achieve the desired filling \bar{n} . We then performed real-time evolution with an MPO dimension up to $\chi = 400$ to describe the driven state.

Appendix D: Perturbative corrections

The virtue of constructing a Floquet Hamiltonian \hat{H}_F is that standard time-independent perturbative methods

are applicable to it. In particular, given a Hamiltonian $\hat{H} = \hat{H}_0 + \lambda \hat{H}_1$, composed of a bare contribution \hat{H}_0 and a perturbation \hat{H}_1 with coupling strength λ , we wish to determine an effective Hamiltonian \hat{H}_{eff} describing the energy eigenvalues of \hat{H} in a degenerate subspace of eigenstates of \hat{H}_0 with energy E . To second order in λ we obtain \hat{H}_{eff} via a standard projection approach [47] as

$$\hat{H}_{\text{eff}} = \mathbb{P} \hat{H} \mathbb{P} - \mathbb{P} \hat{H} \mathbb{Q} \frac{1}{\mathbb{Q} \hat{H} \mathbb{Q} - E} \mathbb{Q} \hat{H} \mathbb{P}, \quad (\text{D1})$$

where \mathbb{P} is the projector onto the degenerate subspace of \hat{H}_0 and \mathbb{Q} is its orthogonal complement. For $\hat{H} = \hat{H}_{\text{hub}}/U$, where $\hat{H}_0 = \hat{H}_{\text{int}}/U$, $\lambda \hat{H}_1 = \hat{H}_{\text{hop}}/U$ and $\mathbb{P} = \mathbb{P}_0$ this method yields the t - J model given in Eq. (12).

We now apply the same approach to \hat{H}_{F} in the enlarged Hilbert space $\mathcal{H} \otimes \mathcal{T}$ using a projector $\mathbb{P} = \mathbb{P}_0 \mathbb{M}_0$, where \mathbb{M}_0 is the projector onto the $m = 0$ Floquet sector, i.e. the DC Fourier component. This approach has the virtue of dealing with the strong-coupling limit and driving on the same footing [46]. Specifically, it allows us to determine an effective time-independent Hamiltonian describing the stroboscopic evolution that contains perturbative corrections due to couplings to doubly occupied states and their Floquet replicas. We find that this again yields t - J model with $\tilde{\alpha} = 1/2$, and $\tilde{t} = \mathcal{J}_0(\nu)t$ as before, but a super-exchange coupling given by

$$\tilde{J}/\tilde{t} = \frac{4t}{U \mathcal{J}_0(\nu)} \sum_{m=-\infty}^{\infty} \frac{\mathcal{J}_m(\nu)^2}{1 + m\Omega/U}. \quad (\text{D2})$$

Note that this second order result for the effective \tilde{J} for sub-lattice driving is identical to that obtained by applying a driving term describing an AC electric field across the lattice [22]. In the limit $U \rightarrow \infty$ this expression reduces to Eq. (16) found from the t - J model Floquet analysis.

In the limit of $\Omega \rightarrow \infty$ the energy separation between the Floquet sectors far exceeds the energy scales t and U within them. Consequently the perturbative contributions to \tilde{J} from $m \neq 0$ sectors can be safely ignored leaving a suppressed super-exchange given by $\tilde{J}/\tilde{t} = 4t/U$. Indeed Eq. (D2) indicates that above gap driving $\Omega > U$ will lead generically to a reduction in \tilde{J} . This is because while $m < 0$ and $m > 0$ contributions have the same numerator, for $m < 0$ the denominator is negative and smaller than for $m > 0$. It therefore acts against the $m \geq 0$ contributions to reduce \tilde{J} pushing the system further into the metallic $\tilde{J}/\tilde{t} \ll 1$ regime.

For in-gap frequencies $t < \Omega < U$ an interesting interplay between strong interactions and driving leads to different behaviour. In this case the leading $m < 0$ contributions, where $\mathcal{J}_m(\nu)^2$ is non-negligible, lie above the retained subspace so their denominators are positive. These contributions represent super-exchange processes in which the gap U is bridged virtually by borrowing $m\Omega$ energy from the driving and then returned. The net effect of this is to strengthen the $m \geq 0$ contributions resulting in \tilde{J} slightly increasing beyond its equilibrium value. Since the hopping continues to be suppressed in-gap driving can therefore access the regime $\tilde{J}/\tilde{t} > 1$.

-
- [1] M. Rini, R. Tobey, N. Dean, J. Itatani, Y. Tomioka, Y. Tokura, R. W. Schoenlein, and A. Cavalleri, *Nature* **449**, 72 (2007).
- [2] D. Fausti, R. I. Tobey, N. Dean, S. Kaiser, A. Dienst, M. C. Hoffmann, S. Pyon, T. Takayama, H. Takagi, and A. Cavalleri, *Science* **331**, 189 (2011).
- [3] F. Schmitt, P. S. Kirchmann, U. Bovensiepen, R. G. Moore, L. Rettig, M. Krenz, J.-H. Chu, N. Ru, L. Perfetti, D. H. Lu, M. Wolf, I. R. Fisher, and Z.-X. Shen, *Science* **321**, 1649 (2008).
- [4] K. Miyano, T. Tanaka, Y. Tomioka, and Y. Tokura, *Phys. Rev. Lett.* **78**, 4257 (1997).
- [5] A. Cavalleri, C. Tóth, C. W. Siders, J. A. Squier, F. Ráksi, P. Forget, and J. C. Kieffer, *Phys. Rev. Lett.* **87**, 237401 (2001).
- [6] L. Perfetti, P. A. Loukakos, M. Lisowski, U. Bovensiepen, M. Wolf, H. Berger, S. Biermann, and A. Georges, *New Journal of Physics* **10**, 053019 (2008).
- [7] E. Beaurepaire, J.-C. Merle, A. Daunois, and J.-Y. Bigot, *Phys. Rev. Lett.* **76**, 4250 (1996).
- [8] C. D. Stanciu, F. Hansteen, A. V. Kimel, A. Kirilyuk, A. Tsukamoto, A. Itoh, and T. Rasing, *Phys. Rev. Lett.* **99**, 047601 (2007).
- [9] H. Ehrke, R. I. Tobey, S. Wall, S. A. Cavill, M. Först, V. Khanna, T. Garl, N. Stojanovic, D. Prabhakaran, A. T. Boothroyd, M. Gensch, A. Mirone, P. Reutler, A. Revcolevschi, S. S. Dhesi, and A. Cavalleri, *Phys. Rev. Lett.* **106**, 217401 (2011).
- [10] M. Först, R. I. Tobey, S. Wall, H. Bromberger, V. Khanna, A. L. Cavalieri, Y.-D. Chuang, W. S. Lee, R. Moore, W. F. Schlotter, J. J. Turner, O. Krupin, M. Trigo, H. Zheng, J. F. Mitchell, S. S. Dhesi, J. P. Hill, and A. Cavalleri, *Phys. Rev. B* **84**, 241104 (2011).
- [11] M. Mitrano, A. Cantaluppi, D. Nicoletti, S. Kaiser, A. Perucchi, S. Lupi, P. Di Pietro, D. Pontiroli, M. Riccò, S. R. Clark, D. Jaksch, and A. Cavalleri, *Nature* **530**, 461 (2016).
- [12] S. J. Denny, S. R. Clark, Y. Laplace, A. Cavalleri, and D. Jaksch, *Phys. Rev. Lett.* **114**, 137001 (2015).
- [13] W. Hu, S. Kaiser, D. Nicoletti, C. R. Hunt, I. Gierz, M. C. Hoffmann, M. Le Tacon, T. Loew, B. Keimer, and A. Cavalleri, *Nat Mater* **13**, 705 (2014).
- [14] S. Kaiser, C. R. Hunt, D. Nicoletti, W. Hu, I. Gierz, H. Y. Liu, M. Le Tacon, T. Loew, D. Haug, B. Keimer, and A. Cavalleri, *Phys. Rev. B* **89**, 184516 (2014).
- [15] R. Mankowsky, A. Subedi, M. Först, S. O. Mariager, M. Chollet, H. T. Lemke, J. S. Robinson, J. M. Glowina, M. P. Minitti, A. Frano, M. Fechner, N. A. Spaldin, T. Loew, B. Keimer, A. Georges, and A. Cavalleri, *Nature* **516**, 71 (2014).
- [16] M. Sentef, A. Kemper, A. Georges, and C. Kollath, (2015), [arXiv:1505.07575](https://arxiv.org/abs/1505.07575).
- [17] M. Knap, M. Badadi, G. Refael, I. Martin, and E. Demler, (2015), [arXiv:1511.07874](https://arxiv.org/abs/1511.07874).

- [18] A. Subedi, A. Cavalleri, and A. Georges, *Phys. Rev. B* **89**, 220301 (2014).
- [19] J. H. Shirley, *Phys. Rev.* **138**, B979 (1965).
- [20] D. H. Dunlap and V. M. Kenkre, *Phys. Rev. B* **34**, 3625 (1986).
- [21] M. Bukov, L. D'Alessio, and A. Polkovnikov, *Adv. Phys.* **64**, 139 (2015).
- [22] J. Mentink, K. Balzer, and M. Eckstein, *Nat. Commun.* **6**, 1 (2015).
- [23] C. E. Creffield and G. Platero, *Phys. Rev. B* **65**, 113304 (2002).
- [24] A. Eckardt, C. Weiss, and M. Holthaus, *Phys. Rev. Lett.* **95**, 260404 (2005).
- [25] S. Kaiser, S. R. Clark, D. Nicoletti, G. Cotugno, R. I. Tobey, N. Dean, S. Lupi, H. Okamoto, T. Hasegawa, D. Jaksch, and A. Cavalleri, *Sci. Rep.* **4**, 3823 (2014).
- [26] R. Singla, G. Cotugno, S. Kaiser, M. Först, M. Mirano, H. Y. Liu, A. Cartella, C. Manzoni, H. Okamoto, T. Hasegawa, S. R. Clark, D. Jaksch, and A. Cavalleri, *Phys. Rev. Lett.* **115**, 187401 (2015).
- [27] For the main effects described here, a two-site periodicity is not essential, and may be realised with higher spatial periodicities.
- [28] H. Mori, S. Tanaka, and T. Mori, *Phys. Rev. B* **57**, 12023 (1998).
- [29] A. Eckardt, M. Holthaus, H. Lignier, A. Zenesini, D. Ciampini, O. Morsch, and E. Arimondo, *Phys. Rev. A* **79**, 013611 (2009).
- [30] G. Jotzu, M. Messer, R. Desbuquois, M. Lebrat, T. Uehlinger, D. Greif, and T. Esslinger, *Nature* **515**, 237 (2014).
- [31] I. Bloch, J. Dalibard, and W. Zwerger, *Rev. Mod. Phys.* **80**, 885 (2008).
- [32] T. Bilitewski and N. R. Cooper, (2016), [arXiv:1606.09089 \[cond-mat.quant-gas\]](https://arxiv.org/abs/1606.09089).
- [33] We shall use a tilde to denote the effective parameters of the driven system throughout.
- [34] U. Schollwöck, *Ann. Phys. (N. Y.)* **326**, 96 (2011).
- [35] F. Verstraete, V. Murg, and J. Cirac, *Adv. Phys.* **57**, 143 (2008).
- [36] G. Vidal, *Phys. Rev. Lett.* **91**, 147902 (2003).
- [37] S. Al-Assam, S. R. Clark, and D. Jaksch, (2016), [arXiv:1600.0000](https://arxiv.org/abs/1600.0000).
- [38] T. Giarmarchi, *Quantum Physics in One Dimension* (Clarendon Press, 2003).
- [39] S. Ejima, F. Gebhard, and S. Nishimoto, *Europhys. Lett.* **70**, 492 (2005).
- [40] A. Moreno, A. Muramatsu, and S. R. Manmana, *Phys. Rev. B - Condens. Matter Mater. Phys.* **83**, 1 (2011), 1012.4028.
- [41] Y. C. Chen and T. K. Lee, *Phys. Rev. B* **47**, 11548 (1993).
- [42] F. Verstraete, J. J. García-Ripoll, and J. I. Cirac, *Phys. Rev. Lett.* **93**, 207204 (2004).
- [43] M. Zwolak and G. Vidal, *Phys. Rev. Lett.* **93**, 207205 (2004).
- [44] P. B. Blakie and A. Bezett, *Phys. Rev. A* **71**, 033616 (2005).
- [45] S. Sotiriadis, P. Calabrese, and J. Cardy, *EPL (Europhysics Letters)* **87**, 20002 (2009).
- [46] M. Bukov, M. Kolodrubetz, and A. Polkovnikov, *Phys. Rev. Lett.* **116**, 125301 (2016).
- [47] F. H. L. Essler, H. Frahm, F. Gohmann, A. Klumper, and V. E. Korepin, *The One-dimensional Hubbard Model* (Cambridge University Press, 2005).
- [48] We note that while the \tilde{b}_{ij} and \tilde{b}_{ij}^\dagger operators commute on disjoint pairs of sites they do not obey bosonic commutation relations if the pairs overlap.
- [49] B. Ammon, M. Troyer, and H. Tsunetsugu, *Phys. Rev. B* **52**, 629 (1995).
- [50] J. Spalek, *Phys. Rev. B* **37**, 533 (1988).
- [51] M. Ogata, M. U. Luchini, S. Sorella, and F. F. Assaad, *Phys. Rev. Lett.* **66**, 2388 (1991).
- [52] J. M. Deutsch, *Phys. Rev. A* **43**, 2046 (1991).
- [53] M. Srednicki, *Phys. Rev. E* **50**, 888 (1994).
- [54] M. Rigol, V. Dunjko, and M. Olshanii, *Nature* **452**, 854 (2008).
- [55] A. Lazarides, A. Das, and R. Moessner, *Phys. Rev. E* **90**, 012110 (2014).
- [56] L. D'Alessio and M. Rigol, *Phys. Rev. X* **4**, 041048 (2014).
- [57] P. Ponte, A. Chandran, Z. Papić, and D. A. Abanin, *Annals of Physics* **353**, 196 (2015).
- [58] M. M. Maricq, *Phys. Rev. B* **25**, 6622 (1982).
- [59] J. Berges, S. Borsányi, and C. Wetterich, *Phys. Rev. Lett.* **93**, 142002 (2004).
- [60] M. Eckstein, M. Kollar, and P. Werner, *Phys. Rev. Lett.* **103**, 056403 (2009).
- [61] L. Mathey and A. Polkovnikov, *Phys. Rev. A* **81**, 033605 (2010).
- [62] M. Bukov, M. Heyl, D. A. Huse, and A. Polkovnikov, *Phys. Rev. B* **93**, 155132 (2016).
- [63] D. A. Abanin, W. De Roeck, and F. Huveneers, *Phys. Rev. Lett.* **115**, 256803 (2015).
- [64] D. A. Abanin, W. De Roeck, and W. W. Ho, (2015), [arXiv:1510.03405](https://arxiv.org/abs/1510.03405).
- [65] T. Kuwahara, T. Mori, and K. Saito, *Annals of Physics* **367**, 96 (2016).
- [66] T. Mori, T. Kuwahara, and K. Saito, *Phys. Rev. Lett.* **116**, 120401 (2016).
- [67] S. Sorella, G. B. Martins, F. Becca, C. Gazza, L. Capriotti, A. Parola, and E. Dagotto, *Phys. Rev. Lett.* **88**, 117002 (2002).
- [68] M. Langemeyer and M. Holthaus, *Phys. Rev. E* **89**, 012101 (2014).
- [69] H. Dehghani, T. Oka, and A. Mitra, *Phys. Rev. B* **90**, 195429 (2014).
- [70] I. P. McCulloch, *Journal of Statistical Mechanics: Theory and Experiment* **2007**, P10014 (2007).
- [71] A. J. Daley, S. R. Clark, D. Jaksch, and P. Zoller, *Phys. Rev. A* **72**, 043618 (2005).