

CLINICAL TRIALS AND OBSERVATIONS

A randomized phase 3 trial of zanubrutinib vs ibrutinib in symptomatic Waldenström macroglobulinemia: the ASPEN study

Constantine S. Tam,¹⁻⁴ Stephen Opat,^{5,6} Shirley D'Sa,⁷ Wojciech Jurczak,⁸ Hui-Peng Lee,⁹ Gavin Cull,^{10,11} Roger G. Owen,¹² Paula Marlton,^{13,14} Björn E. Wahlin,¹⁵ Ramón García Sanz,¹⁶ Helen McCarthy,¹⁷ Stephen Mulligan,¹⁸ Alessandra Tedeschi,¹⁹ Jorge J. Castillo,^{20,21} Jaroslaw Czyz,^{22,23} Carlos Fernández de Larrea,²⁴ David Belada,²⁵ Edward Libby,²⁶ Jeffrey V. Matous,²⁷ Marina Motta,²⁸ Tanya Siddiqi,²⁹ Monica Tani,³⁰ Marek Trnny,³¹ Monique C. Minnema,³² Christian Buske,³³ Veronique Leblond,³⁴ Judith Trotman,^{35,36} Wai Y. Chan,³⁷ Jingjing Schneider,³⁷ Sunhee Ro,³⁷ Aileen Cohen,³⁷ Jane Huang,³⁷ and Meletios Dimopoulos,³⁸ for the ASPEN Investigators

¹Peter MacCallum Cancer Centre, Melbourne, VIC, Australia; ²St Vincent's Hospital, Fitzroy, VIC, Australia; ³Department of Medicine, University of Melbourne, Parkville, VIC, Australia; ⁴Royal Melbourne Hospital, Parkville, VIC, Australia; ⁵Monash Health, Clayton, VIC, Australia; ⁶Clinical Haematology Unit, Monash University, Clayton, VIC, Australia; ⁷University College London Hospital Foundation Trust, London, United Kingdom; ⁸Maria Skłodowska-Curie National Institute of Oncology, Krakow, Poland; ⁹Flinders Medical Centre, Adelaide, SA, Australia; ¹⁰Sir Charles Gairdner Hospital, Perth, WA, Australia; ¹¹Department of Lymphoma/Myeloma, University of Western Australia, Perth, WA, Australia; ¹²St James's University Hospital, Leeds, United Kingdom; ¹³Department of Haematology, Princess Alexandra Hospital, Brisbane, QLD, Australia; ¹⁴School of Medicine, University of Queensland, Brisbane, QLD, Australia; ¹⁵Unit of Hematology, Department of Medicine, Karolinska Universitetssjukhuset-Karolinska Institutet, Stockholm, Sweden; ¹⁶Hospital Universitario de Salamanca, Salamanca, Spain; ¹⁷Royal Bournemouth and Christchurch Hospital, Bournemouth, United Kingdom; ¹⁸Royal North Shore Hospital, Sydney, NSW, Australia; ¹⁹ASST Grande Ospedale Metropolitano Niguarda, Milan, Italy; ²⁰Bing Center for Waldenström Macroglobulinemia, Dana-Farber Cancer Institute, Boston, MA; ²¹Department of Medicine, Harvard Medical School, Boston, MA; ²²Szpital Uniwersytecki No 2 im Dr Jana Bizuela, Bydgoszcz, Poland; ²³Department of Hematology, Collegium Medicum in Bydgoszcz, Nicolaus Copernicus University in Toruń, Bydgoszcz, Poland; ²⁴Amyloidosis and Myeloma Unit, Department of Hematology, Hospital Clinic of Barcelona, August Pi i Sunyer Biomedical Research Institute (IDIBAPS), Barcelona, Spain; ²⁵Fourth Department of Internal Medicine - Haematology, Charles University Hospital and Faculty of Medicine, Hradec Králové, Czech Republic; ²⁶Department of Medicine, University of Washington and the Seattle Cancer Care Alliance, Seattle, WA; ²⁷Colorado Blood Cancer Institute, Denver, CO; ²⁸ASST Spedali Civili di Brescia, Lombardia, Italy; ²⁹City of Hope National Medical Center, Duarte, CA; ³⁰Ospedale Civile S Maria delle Croci, Azienda Unità Sanitaria Locale (AUSL), Ravenna, Italy; ³¹First Department of Medicine, First Faculty of Medicine, Charles University, General Hospital, Prague, Czech Republic; ³²University Medical Center Utrecht, Utrecht, The Netherlands; ³³Comprehensive Cancer Center Ulm-Universitätssklinikum Ulm, Ulm, Germany; ³⁴Service d'Hématologie Clinique, Sorbonne University, Pitié Salpêtrière Hospital, Paris, France; ³⁵Haematology Department, University of Sydney, Concord, NSW, Australia; ³⁶Department of Haematology, Concord Repatriation General Hospital, Sydney, Concord, NSW, Australia; ³⁷BeiGene USA, Inc, San Mateo, CA; and ³⁸Department of Clinical Therapeutics, National and Kapodistrian University of Athens, Athens, Greece

KEY POINTS

- Although not statistically significant, a higher rate of CR/VGPR was observed for zanubrutinib vs ibrutinib (28% vs 19%, respectively).
- The incidence and severity of most BTK-associated toxicities (including atrial fibrillation) were lower with zanubrutinib than ibrutinib.

Bruton tyrosine kinase (BTK) inhibition is an effective treatment approach for patients with Waldenström macroglobulinemia (WM). The phase 3 ASPEN study compared the efficacy and safety of ibrutinib, a first-generation BTK inhibitor, with zanubrutinib, a novel highly selective BTK inhibitor, in patients with WM. Patients with MYD88^{L265P} disease were randomly assigned 1:1 to treatment with ibrutinib or zanubrutinib. The primary end point was the proportion of patients achieving a complete response (CR) or a very good partial response (VGPR) by independent review. Key secondary end points included major response rate (MRR), progression-free survival (PFS), duration of response (DOR), disease burden, and safety. A total of 201 patients were randomized, and 199 received ≥ 1 dose of study treatment. No patient achieved a CR. Twenty-nine (28%) zanubrutinib patients and 19 (19%) ibrutinib patients achieved a VGPR, a nonstatistically significant difference ($P = .09$). MRRs were 77% and 78%, respectively. Median DOR and PFS were not reached; 84% and 85% of ibrutinib and zanubrutinib patients were progression free at 18 months. Atrial fibrillation, contusion, diarrhea, peripheral edema, hemorrhage, muscle spasms, and pneumonia, as well as adverse events leading to treatment discontinuation, were less

common among zanubrutinib recipients. Incidence of neutropenia was higher with zanubrutinib, although grade ≥ 3 infection rates were similar in both arms (1.2 and 1.1 events per 100 person-months). These results demonstrate that zanubrutinib and ibrutinib are highly effective in the treatment of WM, but zanubrutinib treatment was associated with a trend toward better response quality and less toxicity, particularly cardiovascular toxicity. (*Blood*. 2020;136(18):2038-2050)

Introduction

Waldenström macroglobulinemia (WM) is a B-cell malignancy that is characterized by bone marrow infiltration with monoclonal immunoglobulin M (IgM)-secreting lymphoplasmacytic cells that exhibit constitutive activation of the B-cell receptor signaling complex, of which Bruton tyrosine kinase (BTK) is a critical component.^{1,2} In addition, the pathogenetic role of somatic mutations in myeloid differentiation factor 88 (MYD88) and CXCR4 has been extensively characterized.³⁻⁷ MYD88, a component of interleukin-1 and Toll-like receptor signaling complexes, is mutated in >90% of patients with WM.⁸ Studies have shown that hematopoietic cell kinase is activated in MYD88^{L265P} cells and can transactivate BTK, contributing additional pro-survival signals.⁹ Mutations in CXCR4 lead to constitutive CXCR4 signaling and are seen in 30% to 35% of patients with WM.¹⁰

Ibrutinib, a first-generation BTK inhibitor, has emerged as a standard of care for patients with WM. In a phase 2 study of 63 patients with relapsed/refractory (R/R) WM, 73% of patients achieved a major response (at least a partial response [PR]), and estimated 2-year progression-free survival (PFS) was 69%.¹⁰ With longer treatment (median, 47 months), the major response rate (MRR) increased to 78%, including 27% of patients with very good PR (VGPR); median progression-free survival (PFS) was >5 years.¹¹ In a companion study of 30 treatment-naïve (TN) patients, MRR was 83%, including 20% with VGPR, after a median treatment duration of 13.4 months.⁸ Although effective, ibrutinib treatment is associated with frequent toxicities.¹² In a retrospective review of 112 ibrutinib-treated patients with WM (treatment durations ≤43 months), 11% experienced atrial fibrillation.¹³ Grade ≥3 atrial fibrillation and hypertension were reported by 12% and 13% of patients treated with an ibrutinib/rituximab combination, with median ibrutinib treatment duration of 26 months.¹⁴ Inhibition of off-target kinases may explain many ibrutinib-associated toxicities, including diarrhea, hypertension, muscle spasms, bleeding, and atrial fibrillation.^{12,15-20}

Zanubrutinib is a novel potent BTK inhibitor that exhibits less off-target inhibition than ibrutinib. In a phase 1/2 study of patients with B-cell malignancies, 45% of 73 patients with WM achieved a VGPR or CR and 82% achieved a major response after a median follow-up of 32.7 months. Treatment was generally well tolerated, with atrial fibrillation, major hemorrhage, and grade ≥3 diarrhea reported in 5%, 4%, and 3% of patients, respectively.²¹

Based on promising activity and the potential for less off-target toxicity than first-generation BTK inhibitors, this phase 3 trial was designed to directly compare safety and efficacy of ibrutinib vs zanubrutinib in patients with WM (NCT03053440).

Methods

Study design and treatments

BGB-3111-302 (ASPEN) is a randomized open-label phase 3 study comparing ibrutinib and zanubrutinib in patients with WM who required treatment based on consensus criteria.²² Patients with MYD88^{L265P} disease were assigned 1:1 to receive ibrutinib at the approved dose of 420 mg once daily or zanubrutinib, 160 mg twice daily, in 28-day cycles until progression or intolerance (cohort 1). Randomization was stratified by warts, hypogammaglobulinemia, immunodeficiency, and myelokathexis (WHIM)

(CXCR4^{WHIM}) syndrome-like mutation status and number of prior lines of therapy. Patients with wild-type MYD88 (MYD88^{WT}) disease or with undetermined MYD88 mutation status were enrolled in cohort 2 and received zanubrutinib on a third nonrandomized arm. Treatment modifications are outlined in supplemental Table 1 (available on the Blood Web site) for zanubrutinib and followed local prescribing information for ibrutinib. Treatment interruption for ≤2 consecutive cycles and ≤2 dose reductions were permitted for management of recurring grade 3/4 treatment-related toxicities. Crossover at progression or due to intolerance in cohort 1 was not permitted. Results from cohort 2 will be reported separately.

Trial oversight and conduct

The trial was approved by the Institutional Review Board or Independent Ethics Committee at each study site and conducted in accordance with applicable regulatory requirements, the principles of the Declaration of Helsinki, and Good Clinical Practice guidelines of the International Conference on Harmonization. All patients provided written informed consent.

Patients

Eligible patients had R/R WM after ≥1 prior line of therapy or TN WM unsuitable for standard immunochemotherapy based on the presence of documented comorbidities or risk factors (supplemental Table 2). Patients were required to have measurable disease, adequate end-organ function, and absolute neutrophil and platelet counts of $0.75 \times 10^9/L$ and $50 \times 10^9/L$, respectively. Patients with prior BTK inhibitor exposure, disease transformation, active central nervous system lymphoma, clinically significant cardiovascular disease, or who required warfarin or another vitamin K antagonist were excluded.

Assessments

Bone marrow aspiration and biopsy were collected at baseline, week 48, and as clinically indicated thereafter (including for confirmation of CR). Baseline bone marrow samples were assayed for MYD88 and CXCR4 mutations prior to cohort assignment (supplemental Methods). Quantitative serum immunoglobulins (IgM, IgG, IgA), M-paraprotein, and β-2 microglobulin levels were measured at baseline, the beginning of each cycle until cycle 12, and every 3 cycles thereafter. Contrast-enhanced computed tomography or magnetic resonance imaging scans were performed at baseline; patients with extramedullary disease underwent follow-up scans every 3 cycles until cycle 12 and every 6 cycles thereafter until progression. Electrocardiograms were performed on day 1 of cycles 1 and 2, every 4 cycles thereafter, and at the end of treatment. Quality-of-life (QoL) assessments (European Organization for Research and Treatment of Cancer Quality of Life Questionnaire-Core 30 and the European Quality of Life Five Dimensions Questionnaire) were collected at baseline, every 3 cycles until cycle 12, and every 6 cycles thereafter.

Outcomes

The primary end point was the proportion of patients in cohort 1 who achieved a VGPR or CR, as assessed by an independent review committee (IRC; PAREXEL Informatics, Waltham, MA) based on the 6th International Workshop on Waldenström Macroglobulinemia consensus criteria.²³ Criteria that define each response category (assessed every 28 days and every 84 days after cycle 12) are listed in supplemental Table 3. Secondary end points included IRC-assessed MRR, duration of response (DOR; time from initial qualifying response until progression or death), and

PFS (time from randomization until progression or death), investigator-assessed efficacy outcomes, reductions in bone marrow and extramedullary tumor burden, and safety. Overall survival (OS) and changes in QoL were exploratory end points. Adverse event (AE) assessments (including adverse events of interest [AEIs]; supplemental Table 4) included type, incidence, outcomes, and severity of AEs, with severity graded according to the National Cancer Institute Common Toxicity Criteria version 4.03.

Statistical analysis

The primary efficacy analysis was planned to take place ~12 months after the last R/R patient was randomized. Comparisons between ibrutinib and zanubrutinib for the primary end point in cohort 1 followed a hierarchical fixed-sequence procedure to adjust for multiplicity. Testing for the CR/VGPR superiority rate of zanubrutinib vs ibrutinib in patients with R/R WM was performed first. If the aforementioned comparison was statistically significant, further testing was performed, including all randomized cohort 1 patients (including ~38 TN patients with MYD88^{L265P} disease). A Cochran-Mantel-Haenszel test for difference in CR/VGPR rates was performed for both comparisons, with the magnitude of difference estimated as the weighted average across the randomization stratification factors, age groups (≤ 65 vs > 65 years), and the corresponding 2-sided 95% confidence intervals (CIs).^{24,25} Superiority was to be declared if the 2-sided *P* value from the Cochran-Mantel-Haenszel test was $< .05$ and the estimated difference was positive. Statistical significance for the first or both response comparisons was to trigger a test of noninferiority in MRRs between zanubrutinib and ibrutinib, using the estimated difference and its 95% CIs. Noninferiority would be declared if the lower limit of the 95% CI for the estimated difference in MRRs between zanubrutinib and ibrutinib excluded the prespecified margin for noninferiority, -8% . If the lower limit of the 95% CI excluded 0% , superiority of zanubrutinib in MRR would be declared. A total of 150 R/R patients randomized 1:1 in cohort 1 would provide 81.4% power to demonstrate superiority under an assumed CR/VGPR rate of 35% for zanubrutinib vs 15% for ibrutinib, using a normal approximation of a binomial test and a 2-sided α of 0.05. Noninferiority was powered to 85.5% under assumed MRRs of 90% and 80% for zanubrutinib and ibrutinib, respectively, and a noninferiority margin of 0.08.

Reductions in IgM levels from baseline were assessed with parametric and nonparametric methods. A likelihood-based repeated-measures mixed model was used to estimate the slopes of IgM reduction from baseline and to compare the estimated slopes between arms. IgM reduction was also summarized as area under the (IgM) \times time curve, with the treatment arm difference tested using the Mantel-Haenszel test. Log-transformed IgM levels were used in both analyses.

PFS by treatment arm was estimated at the time of primary efficacy analysis by Kaplan-Meier (K-M) methodology with censoring.²⁶ Two-sided 95% CIs for median PFS were estimated with the Brookmeyer and Crowley method.²⁷ K-M methodology was used to estimate PFS at selected time points, with corresponding 95% CIs estimated using Greenwood's formula.²⁸ Analysis methods for DOR were similar to those for PFS. Follow-up for PFS and DOR was estimated using the reverse K-M method. Rates of CR/VGPR for selected subgroups defined by prespecified characteristics were summarized for each treatment

arm in a forest plot. Crude incidence rates for all AEs and exposure-adjusted incidence rates for AEs included all cohort 1 patients who received any dose of ibrutinib or zanubrutinib and were summarized using descriptive statistics. The distribution of times to first occurrence of AEs was summarized using K-M methodology.

Results

Patient characteristics and disposition

Between January of 2017 and July of 2018, 164 R/R and 37 TN patients with WM from 58 study sites were enrolled in cohort 1. Two R/R patients were randomized but never dosed (1 ibrutinib patient had central nervous system lymphoma identified prior to dosing, and 1 zanubrutinib patient had acute kidney injury; Figure 1). The most common ($>20\%$) indications for therapy initiation were fatigue, anemia, B symptoms, hyperviscosity, and peripheral neuropathy (supplemental Table 5). Treatment arms were generally balanced for key baseline characteristics; however, more patients randomized to zanubrutinib than to ibrutinib were >75 years old (33% vs 22%, respectively), and more were anemic (hemoglobin ≤ 110 g/L in 66% vs 54% of patients, respectively; Table 1). Overall, 8% and 11% of ibrutinib and zanubrutinib patients had a *CXCR4*^{WHIM} mutation. Approximately 85% were in the intermediate- or high-risk prognostic category,²⁹ and 77% had computed tomography evidence of extramedullary disease. Most R/R patients ($>90\%$) received 1 to 3 prior lines of therapy, with a median of 1 in each arm; more than 90% and 85% had ≥ 1 prior exposure to anti-CD20 and alkylator therapy, respectively (supplemental Table 6). Eight (8%) and 11 (10%) ibrutinib and zanubrutinib patients had a history of atrial fibrillation or flutter, and 43% and 38% reported a history of hypertension, respectively. At a median follow-up of 19.4 months, 79% of patients remained on study treatment, and 89% remained on study.

Responses

No patient achieved a CR. Frequency of IRC-assessed VGPRs was higher among zanubrutinib patients than ibrutinib patients (28% and 19%, respectively, 2-sided *P* = .09), a trend observed among R/R (29% vs 20%; *P* = .12) and TN (26% vs 17%; *P* = .54) patients (Table 2). Investigator-assessed rates of VGPR were 28% and 17% in the zanubrutinib and ibrutinib arms, respectively (*P* = .04). Concordance rates between IRC- and investigator-assessed best responses were 94% and 95% for zanubrutinib and ibrutinib arms, respectively. IRC-assessed best responses based on reductions in serum IgM alone and those based on the 6th International Workshop on Waldenström Macroglobulinemia consensus guidelines were concordant in 92% and 95%, respectively. The rates of VGPR were mostly comparable between the arms for prognostically important subgroups (eg, intermediate- or high-risk, based on the International Prognostic Scoring System; age >65 years; hemoglobin ≤ 110 g/L; platelet count $\leq 100 \times 10^9$ /L; and β -2 microglobulin >3 mg/dL) (Figure 2). MRRs among zanubrutinib and ibrutinib patients were 77% and 78% overall, 78% and 80% among R/R patients, and 74% and 67% among TN patients, respectively. The noninferiority hypothesis for MRR difference was not tested because of the lack of statistically significant superiority of CR/VGPR rates for zanubrutinib.

One patient in each arm with a *CXCR4*^{WHIM} mutation achieved a VGPR; 18 (20%) ibrutinib-treated patients and 28 (31%) zanubrutinib-treated patients with *CXCR4*^{WT} disease achieved a VGPR. MRRs for *CXCR4*^{WHIM} and *CXCR4*^{WT} patient subsets were comparable across

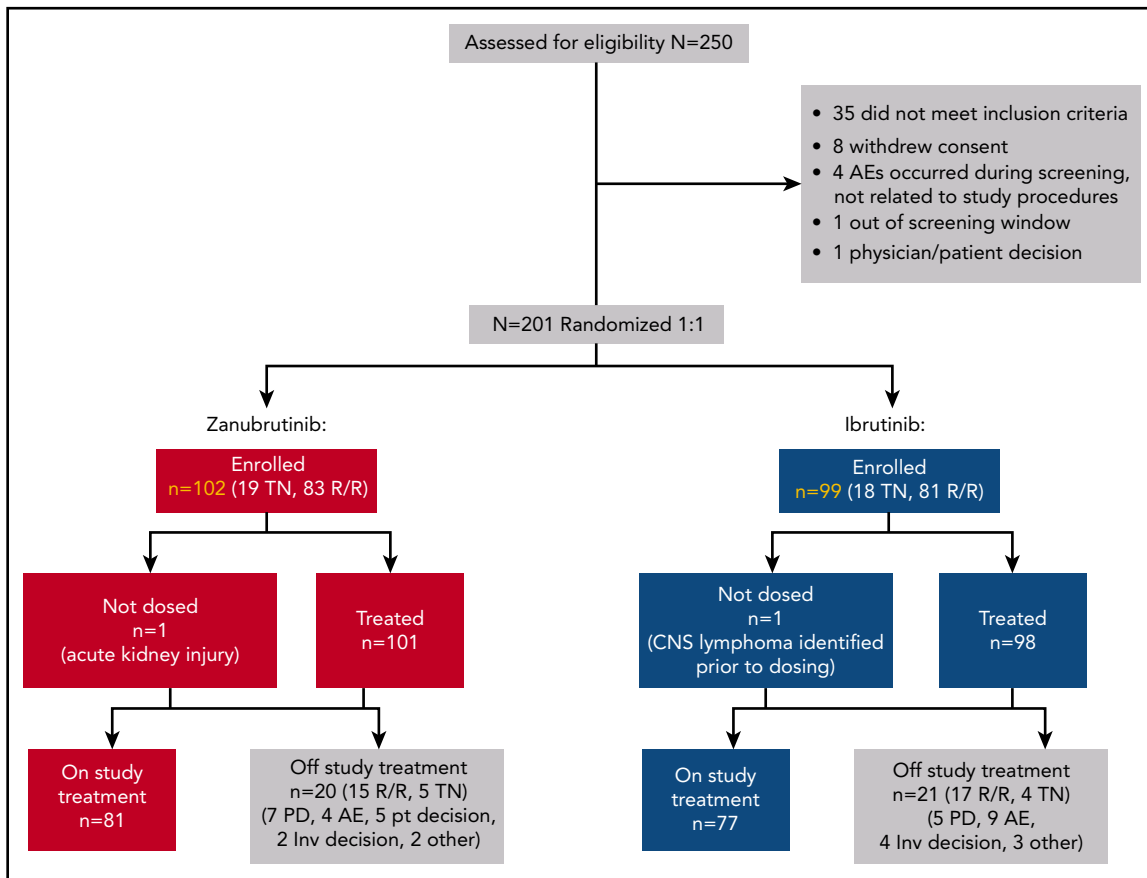


Figure 1. BGB-3111-302 (ASPEN) patient disposition. CNS, central nervous system; inv, investigator; PD, progressive disease; pt, patient.

treatment arms (63% vs 64% and 80% vs 79%, respectively). Median times to achieve a VGPR were skewed in favor of zanubrutinib, owing to the large difference observed for TN patients (5.6 and 22.1 months with zanubrutinib and ibrutinib; $P = .35$). However, among R/R patients, these were comparable at 4.7 and 5.1 months ($P = .17$), respectively. Median time to major response for both arms was 2.8 months, with little difference in the R/R or TN subset or among patients with *CXCR4^{WT}* disease; the median times to major response for ibrutinib and zanubrutinib patients with *CXCR4^{WHIM}* mutations were 6.6 and 3.1 months, respectively. Median DOR has not been reached in either treatment arm (Figure 3B-C; Table 2). One zanubrutinib patient and 4 ibrutinib patients who achieved a VGPR progressed as of 31 August 2019. The 18-month event-free rates for major responders were similar in the zanubrutinib and ibrutinib arms (85% and 88% overall, and 87% and 86% for R/R patients, respectively) (Table 2).

PFS and OS

After median follow-up for PFS of 18.0 and 18.5 months, 15 (15%) zanubrutinib patients and 16 (16%) ibrutinib patients progressed or died. Median PFS was not reached for either arm. Event-free rates at 18 months were comparable: 85% and 84% overall (86% and 82% for R/R patients) (Figure 3A; Table 2). Six (3 R/R; 3 TN) zanubrutinib patients and 8 (8 R/R; 0 TN) ibrutinib patients died; estimated OS rates at 18 months were 97% and 93%, respectively.

IgM and hemoglobin levels

Median IgM levels were reduced by 79% (quartile [Q]1-Q3: 88-63) and 72% (Q1-Q3: 86-58) for zanubrutinib and ibrutinib patients, respectively (supplemental Figure 1A). Zanubrutinib

demonstrated significantly greater and more sustained reductions in IgM by the repeated-measures mixed-effect model ($P = .03$) and area under the (IgM) \times time curve ($P = .04$) comparisons (supplemental Table 7). Most patients in both arms were anemic at baseline (Table 1). Median baseline hemoglobin concentrations were 103 g/L (Q1-Q3: 91-116) and 109 g/L (Q1-Q3: 94-122) for zanubrutinib and ibrutinib patients, respectively. Rapid increases in hemoglobin concentrations were noted in both arms through cycle 6, with a plateau observed thereafter (supplemental Figure 1B). Median maximal hemoglobin concentrations increased by 27 g/L (Q1-Q3: 15-46) and 28 g/L (Q1-Q3: 15-43) among zanubrutinib and ibrutinib patients, respectively.

Bone marrow and extramedullary disease

Overall, 69% and 73% of zanubrutinib and ibrutinib patients exhibited reductions in bone marrow infiltration. Median maximal reductions from baseline were 10% (Q1-Q3: 30-0) and 15% (Q1-Q3: 35-0) for zanubrutinib and ibrutinib patients. Reductions in lymph node and/or spleen dimensions were noted in 81% and 80%, respectively. Median maximal reductions in the sum of target lymph node perpendicular diameters were 58% (Q1-Q3: 40-85) and 50% (Q1-Q3: 31-63) for zanubrutinib and ibrutinib patients, respectively; median maximal reductions in vertical spleen length among patients with splenomegaly were 27% (Q1-Q3: 24-39) and 24% (Q1-Q3: 5-36), respectively.

Safety and patient reported outcomes

Median treatment durations were comparable in the zanubrutinib (18.7 months) and ibrutinib (18.6 months) treatment

Table 1. Baseline demographic and disease characteristics

Characteristic	R/R		TN		Overall	
	Ibrutinib (n = 81)	Zanubrutinib (n = 83)	Ibrutinib (n = 18)	Zanubrutinib (n = 19)	Ibrutinib (n = 99)	Zanubrutinib (n = 102)
Age, median (min, max), y Age >75 y, n (%)	69 (52, 90) 16 (20)	69 (45, 87) 27 (33)	72 (38, 89) 6 (33)	74 (50, 81) 7 (37)	70 (38, 90) 22 (22)	70 (45, 87) 34 (33)
Males, n (%)	53 (65)	58 (70)	12 (67)	11 (58)	65 (66)	69 (68)
ECOG-PS						
0/1	76 (94)	78 (94)	16 (89)	18 (95)	92 (93)	96 (94)
2	5 (6)	5 (6)	2 (11)	1 (5)	7 (7)	6 (6)
Prognostic category at study entry*						
Low	12 (15)	16 (19)	1 (6)	1 (5)	13 (13)	17 (17)
Intermediate	34 (42)	30 (36)	8 (44)	8 (42)	42 (42)	38 (37)
High	35 (43)	37 (45)	9 (50)	10 (53)	44 (44)	47 (46)
Time from initial diagnosis, median (min, max), y	5.9 (0.1, 25)	5.3 (0.1, 23)	1.7 (0.1, 17)	0.5 (0.1, 9)	4.9 (0.1, 25)	4.4 (0.1, 23)
Prior lines of therapy, median (min, max), n						
0, n (%)	1 (1, 6) 0	1 (1, 8) 0	0 (0, 0) 18 (100)	0 (0, 0) 19 (100)	1 (0, 6) 18 (18)	1 (0, 8) 19 (19)
1-3, n (%)	74 (91)	76 (92)	0	0	74 (75)	76 (75)
>3, n (%)	7 (9)	7 (8)	0	0	7 (7)	7 (7)
Prior stem cell transplant	1 (1)	3 (4)	0	0	1 (1.0)	3 (2.9)
IgM, median (min, max), g/L†						
≥40	33.4 (2.4, 108) 30 (37)	30.4 (5.8, 73) 288 (34)	36.8 (9.9, 100) 8 (44)	35.7 (8.1, 87) 8 (42)	34.2 (2.4, 108) 38 (38)	31.8 (5.8, 87) 36 (35)
<40	50 (62)	55 (66)	10 (56)	11 (58)	60 (61)	66 (65)
Missing data	1 (1)	0	0	0	1 (1.0)	0
β-2 Microglobulin, median, (min, max), mg/L >3 mg/L, n (%)	4.2 (1.7, 13.6) 60 (74)	4.1 (1.6, 21.7) 62 (75)	4.1 (1.8, 10.3) 14 (78)	4.7 (2.1, 12.1) 13 (68)	4.2 (1.7, 13.6) 74 (75)	4.3 (1.6, 21.7) 75 (74)
MYD88‡/CXCR4 genotype						
MYD88 ^{L265P} /CXCR4 ^{WT}	73 (90)	73 (88)	17 (94)	18 (95)	90 (91)	91 (89)
MYD88 ^{L265P} /CXCR4 ^{WHIM}	8 (10)	10 (12)	0 (0)	1 (5)	8 (8)	11 (11)
MYD88 ^{L265P} /CXCR4 ^{UNK} §	0	0	1 (6)	0	1 (1.0)	0
Bone marrow involvement						
Tumor cells, median (min, max), %	72 (89) 60 (0, 90)	77 (93) 60 (0, 90)	17 (94) 70 (8, 90)	19 (100) 70 (10, 90)	89 (90) 60 (0, 90)	96 (94) 60 (0, 90)
Extramedullary disease¶						
Lymphadenopathy	58 (72) 53 (65)	64 (77) 63 (76)	15 (83) 14 (78)	17 (90) 16 (84)	73 (74) 67 (68)	81 (79) 79 (78)
Splenomegaly	10 (12)	14 (17)	3 (17)	3 (16)	13 (13)	17 (17)
Other	3 (4)	0	0	1 (5)	1 (1)	4 (2)
Peripheral blood cytopenias						
Hemoglobin ≤110 g/L	43 (53)	51 (61)	10 (56)	16 (84)	53 (54)	67 (66)
Platelet count ≤100 × 10 ⁹ /L	12 (15)	10 (12)	0	2 (11)	12 (12)	12 (12)
Absolute neutrophil count ≤1.5 × 10 ⁹ /L	7 (9)	8 (10)	0	3 (16)	7 (7)	11 (11)

Unless otherwise noted, data are n (%). Percentages may not add to 100% because of rounding.

ECOG-PS, Eastern Cooperative Oncology Group performance status; max, maximum; min, minimum; WHIM, warts, hypogammaglobulinemia, infections, myelokathexis; WT, wild-type.

*Patients were assigned 1 point for each of the following baseline characteristics: age >65 years; hemoglobin ≤11.5 g/dL; platelet count ≤100 × 10⁹/L; β-2 microglobulin level >3 mg/L; and M paraprotein levels >7.0 g/dL. Patients with a score of 0 or 1 (excepting age) were assigned to the low-risk category, those >65 years old or with a score of 2 were assigned to the intermediate-risk category, and those with a score ≥3 were assigned to the high-risk category.²⁹ M-paraprotein levels were quantitated by serum protein electrophoresis.

†Central laboratory nephelometric assessments.

‡Three patients (all zanubrutinib treated and all TN) had second missense mutations detected within the Toll/interleukin-1 receptor (TIR) binding domain of MYD88: M232T, V217F, and P182L. Additional mutations were identified in non-TIR binding domains in 4 patients: D165del (R/R zanubrutinib patient); W91ter, G93ter (R/R ibrutinib patient); L72M (RR zanubrutinib patient); and T107S, fs24ter (TN zanubrutinib patient). See supplemental Methods for the specific CXCR4^{WHIM} mutations detected.

§Mutation testing using a next-generation sequencing method performed in a local laboratory revealed the presence of MYD88^{L265P} in baseline bone marrow aspirate.

¶Based on imaging studies, as assessed by independent review. Lymphadenopathy was defined as the presence of ≥1 lymph node with a long axis >1.5 cm or other extranodal lesions with a short axis >1.0 cm. Splenomegaly was defined as a spleen length (cranial to caudal) >13 cm.

||Three patients had discrete extranodal splenic lesions; 1 patient had 2 breast lesions.

Table 2. IRC-assessed efficacy outcomes

	R/R		TN		Overall	
	Ibrutinib (n = 81)	Zanubrutinib (n = 83)	Ibrutinib (n = 18)	Zanubrutinib (n = 19)	Ibrutinib (n = 99)	Zanubrutinib (n = 102)
Best overall response, n (%)						
CR	0 (0)	0 (0)	0 (0)	0 (0)	0 (0)	0 (0)
VGPR	16 (20)	24 (29)	3 (17)	5 (26)	19 (19)	29 (28)
PR	49 (61)	41 (49)	9 (50)	9 (47)	58 (59)	50 (49)
MR	11 (14)	13 (16)	4 (22)	4 (21)	15 (15)	17 (17)
SD	2 (3)	3 (4)	1 (6)	0 (0)	3 (3)	3 (3)
PD	2 (3)	1 (1)	0 (0)	1 (5)	2 (2)	2 (2)
Not evaluable*	1 (1)	1 (6)	1 (1)	0 (0)	2 (2)	1 (1)
Response rates, % (95% CI)†						
VGPR or CR	20 (12-30)	29 (20-40)	17 (4-41)	26 (9-51)	19‡ (12-28)	28 (20-38)
P	.12		NR		.09	
MRR	80 (70-88)	78 (68-87)	67 (41-87)	74 (49-91)	78 (68-86)	77 (68-85)
ORR	94 (86-98)	94 (87-98)	89 (65-99)	95 (74-100)	93 (86-97)	94 (88-98)
Duration of CR/VGPR, mo						
Median (range)	NE (1, 21+)	NE (0+, 19+)	NE (0+, 3+)	NE (0+, 22+)	NE (0+, 21+)	NE (0+, 22+)
18-Mo event-free rate, % (95% CI)§	64 (29-85)	90 (47-99)	NE (NE, NE)	100 (NE, NE)	64 (29-85)	93 (59-99)
Duration of major response, months						
Median (range)	NE (0+, 26+)	NE (0+, 25+)	NE (3+, 28+)	NE (0+, 25+)	NE (0+, 28+)	NE (0+, 25+)
18-Mo event-free rate, % (95% CI)§	86 (73-93)	87 (73-94)	100 (NE, NE)	80 (39-95)	88 (77-94)	85 (72-93)
PFS						
Median (range), mo	NE (0, 28+)	NE (0+, 28+)	NE (0+, 31+)	NE (1, 31+)	NE (0+, 31+)	NE (0+, 31+)
18-Mo event-free rate, % (95% CI)§	82 (71-89)	86 (74-93)	94 (63-99)	78 (52-91)	84 (75-90)	85 (75-91)

Percentages are based on N, the number of randomized patients.

+, censored observations; MR, minimal response; NE, not estimable; ORR, overall response rate; NR, not reported; PD, progressive disease; SD, stable disease.

*NE includes patients with unknown response, disease flare, and study discontinuation prior to first disease assessment.

†95% CIs were estimated using the Clopper-Pearson method.

‡Two R/R ibrutinib-treated patients assessed as having VGPRs by independent review were assigned a best response of PR and MR by their investigators.

§Event-free rates were estimated by K-M methodology, with 95% CIs estimated using Greenwood's formula.

arms; 89% and 84% of patients had minimal exposures of 12 months. Median relative dose intensities were 98% in both arms. Median treatment duration for TN patients was 21 months in both arms.

The most common (reported in >20% of patients) AEs among zanubrutinib patients were neutropenia, upper respiratory infection, and diarrhea (Table 3). The most common AEs among ibrutinib patients were diarrhea, upper respiratory infection, contusion, and muscle spasms. Atrial fibrillation, diarrhea, contusion, muscle spasms, peripheral edema, and pneumonia were reported at ≥10% higher incidence among ibrutinib vs zanubrutinib patients; neutropenia was ≥10% higher among zanubrutinib patients. Grade ≥3 AEs were reported in 63% and 58% of ibrutinib and zanubrutinib patients, respectively. Grade ≥3 hypertension and pneumonia were reported at a ≥5% higher incidence among ibrutinib patients vs zanubrutinib patients; grade ≥3 neutropenia was reported at a ≥5% higher incidence among zanubrutinib patients. Overall, 41% and 40% of ibrutinib and zanubrutinib patients, respectively, experienced ≥1 serious AE (supplemental Table 8). The most common serious AEs (ibrutinib vs zanubrutinib) were pneumonia (9 patients vs 1), neutropenia and febrile neutropenia (each 0 vs 3), influenza (1 vs

3), and pyrexia and sepsis (each 3 vs 2). Three deaths (all R/R patients) were attributed to AEs. Two deaths in ibrutinib patients resulted from complications of sepsis, and 1 zanubrutinib patient died from complications of cardiac arrest postplasmapheresis.

Infections were common in both arms (Table 3). Grade ≥3 infections were similar between arms, although the incidence of pneumonia was higher among ibrutinib patients. One zanubrutinib-treated patient developed cryptococcal sepsis, whereas 2 ibrutinib-treated patients developed esophageal candidiasis. Two R/R zanubrutinib patients exhibited findings consistent with hepatitis B virus reactivation (1 while taking lamivudine); both were managed with treatment interruption and antiviral therapy. More ibrutinib-treated patients than zanubrutinib-treated patients received anti-infective therapies (83% and 63%, respectively). Exposure-adjusted grade 1/2 bleeding incidence was higher among ibrutinib patients; major hemorrhage was reported in 6 zanubrutinib patients and 9 ibrutinib patients. Ibrutinib patients experienced an ~10-fold higher incidence of atrial fibrillation/flutter and approximately twofold increased frequency of hypertension on an exposure-adjusted basis (Table 3). Atrial fibrillation occurred within 6 months of treatment onset in 7 ibrutinib-treated

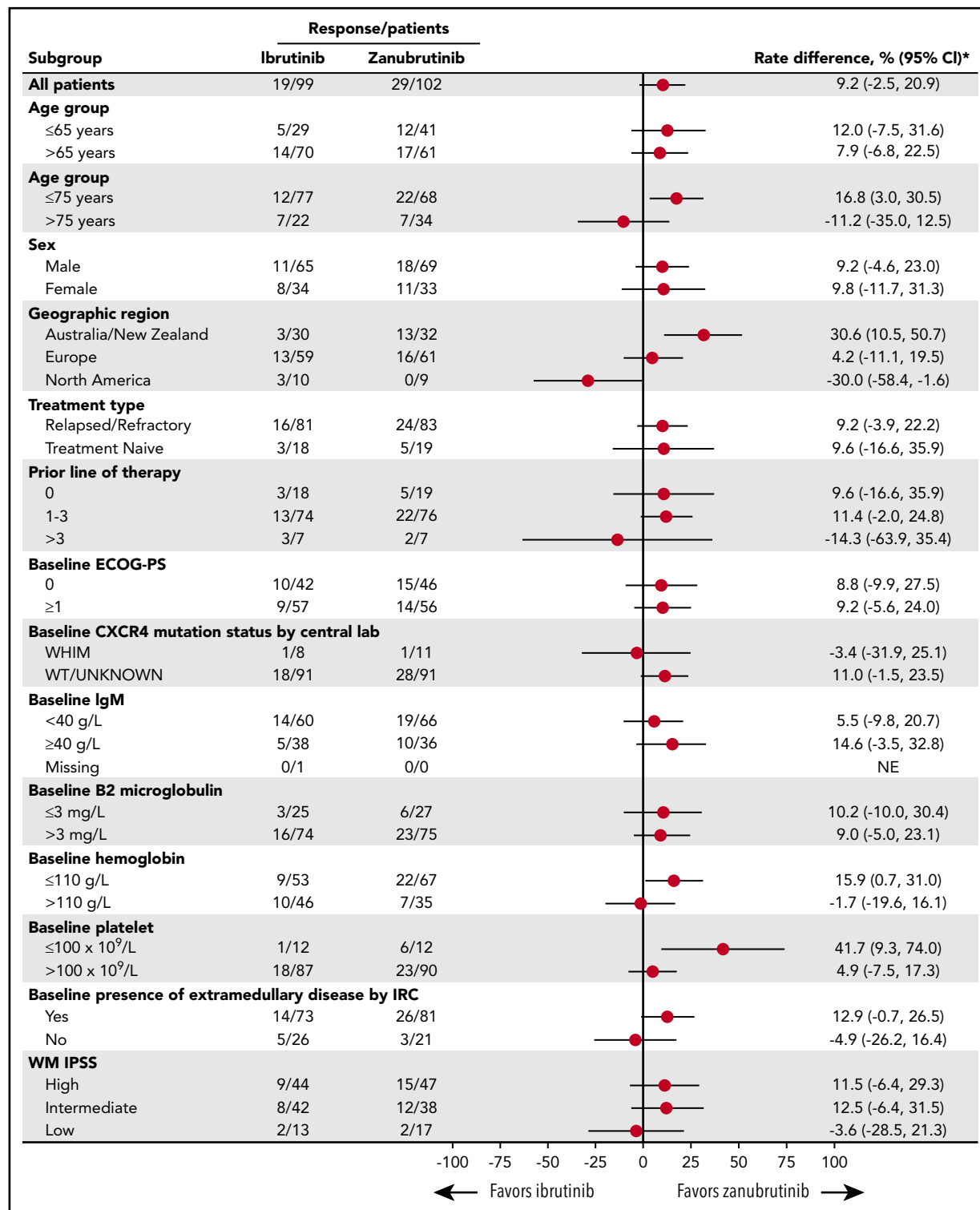
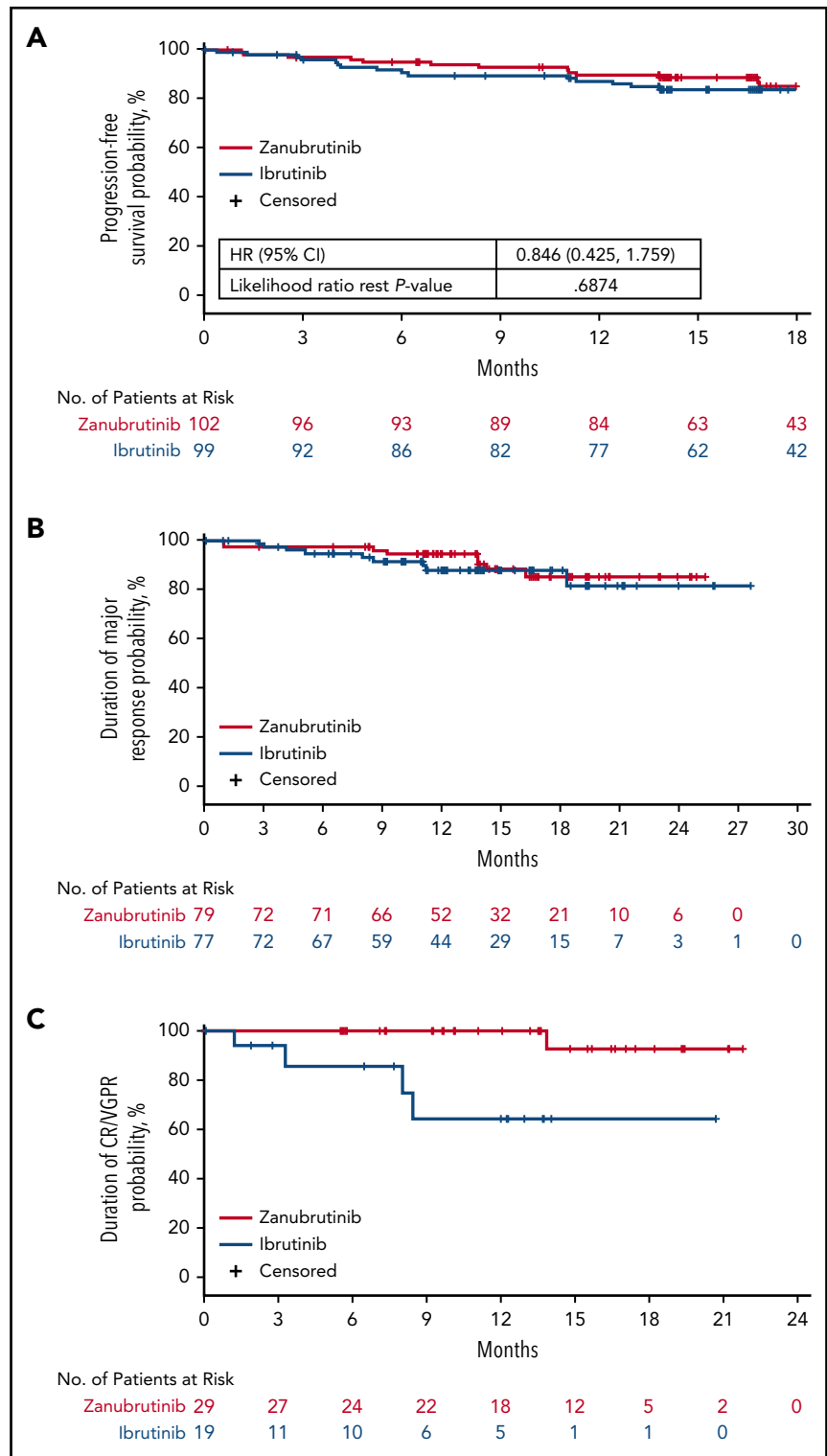


Figure 2. Forest plot of subgroup differences in the rate of CR/VGPR. *Unstratified rate difference and 95% CIs. ECOG-PS, Eastern Cooperative Oncology Group performance status; IPSS, International Prognostic Scoring System.

patients and 1 zanubrutinib-treated patient; 4 ibrutinib-treated patients and no zanubrutinib-treated patient had onset of atrial fibrillation >12 months after treatment onset. Onset of hypertension beyond 12 months also occurred more frequently in the ibrutinib vs the zanubrutinib (6 patients vs 1 patient) treatment arm. Zanubrutinib patients experienced more than

twofold the incidence of any grade (25% vs 12%) and grade ≥3 (20% vs 8%) neutropenia vs ibrutinib patients. More neutropenic patients in the zanubrutinib arm received granulocyte colony-stimulating factor than in the ibrutinib arm (47% vs 31%). Time to event plots for the first occurrence of AEs by treatment arm are provided in Figure 4.

Figure 3. Kaplan-Meier curves of survival and response. K-M curves for PFS (A), duration of major response (B), and duration of CR/VGPR (C). All K-M distributions are based on IRC-assessed responses for R/R and TN patients in each respective arm. HR, hazard ratio.



More ibrutinib than zanubrutinib patients required dose reductions for AEs (23% vs 14%, respectively). Nine (9%) ibrutinib patients discontinued study treatment for AEs (myocardial infarction, bacterial sepsis, sepsis, death, cause unspecified, drug-induced liver injury, hepatitis, interstitial lung disease, pneumonia, and pneumonitis). Four (4%) zanubrutinib patients discontinued study treatment due to AEs (subdural hemorrhage, cardiac arrest, neutropenia, and IgA multiple myeloma).

In most QoL assessments, zanubrutinib trended toward greater improvement, particularly among patients who achieved a VGPR (supplemental Figure 2). This was most notable in the European Quality of Life Five Dimensions Questionnaire and European Organization for Research and Treatment of Cancer Quality of Life Questionnaire-Core 30 subscales of appetite, dyspnea, fatigue, physical functioning, and role functioning. The symptom subscale for diarrhea trended worse for ibrutinib patients than for

Table 3. Treatment-emergent AEs

Event term, n (%)	Ibrutinib (n = 98)		Zanubrutinib (n = 101)		
	All grade	Grade ≥3	All grade	Grade ≥3	
Nonhematologic AEs					
Diarrhea*	31 (32)	1 (1)	21 (21)	3 (3)	
Upper respiratory tract infection	28 (29)	1 (1)	24 (24)	0	
Contusion*	23 (24)	0	13 (13)	0	
Muscle spasms*	23 (24)	1 (1)	10 (10)	0	
Epistaxis	19 (19)	0	13 (13)	0	
Peripheral edema*	19 (19)	0	9 (9)	0	
Cough	17 (17)	0	13 (13)	0	
Rash	16 (16)	0	13 (13)	0	
Hypertension	16 (16)	11 (11)	11 (11)	6 (6)	
Arthralgia	16 (16)	0	13 (13)	3 (3)	
Fatigue	15 (15)	1 (1)	19 (19)	1 (1)	
Atrial fibrillation/flutter*	15 (15)	4 (4)	2 (2)	0	
Nausea	13 (13)	1 (1)	15 (15)	0	
Vomiting	13 (13)	1 (1)	9 (9)	0	
Pyrexia	12 (12)	2 (2)	13 (13)	2 (2)	
Pneumonia*	12 (12)	7 (7)	2 (2)	1 (1)	
Headache	11 (11)	1 (1)	15 (15)	1 (1)	
Urinary tract infection	10 (10)	2 (2)	10 (10)	0	
Hematuria	10 (10)	2 (2)	7 (7)	0	
Dizziness	9 (9)	0	13 (13)	0	
Constipation	7 (7)	0	16 (16)	0	
Nasopharyngitis	7 (7)	0	11 (11)	0	
Extremity pain	7 (7)	0	11 (11)	1 (1)	
Back pain	6 (6)	0	14 (14)	4 (4)	
Dyspnea	6 (6)	0	14 (14)	0	
Hematologic AEs					
Neutropenia*	13 (13)	8 (8)†	29 (29)	19 (20)†	
Febrile neutropenia	0	0	4 (4)	4 (4)	
Thrombocytopenia	10 (10)	3 (3)	10 (10)	6 (6)	
Anemia	10 (10)	5 (5)	12 (12)	5 (5)	
		Ibrutinib		Zanubrutinib	
AEIs, events/100 person-months‡	All grade	Grade ≥3	All grade	Grade ≥3	
Infections					
Opportunistic infections	8.3	1.2	7.9	1.1	
	0.1	0	0.1	0.1	
Bleeding					
Major hemorrhage	7.0	0.5	4.4	0.3	
	0.6	0.5	0.3	0.3	
Hypertension	1.2	0.8	0.7	0.3	
Atrial fibrillation/flutter	1.0	0.2	0.1	0	
Neutropenia	0.9	0.5	2.1	1.3	
Thrombocytopenia	0.8	0.2	0.6	0.3	
Second primary malignancies					
Skin cancers	0.7	0.1	0.7	0.1	
	0.6	0	0.5	0	
Anemia	0.6	0.3	0.7	0.3	
Tumor lysis syndrome	0	0	0	0	

Data are for treatment-emergent AEs in all cohort 1 patients. Listed events were reported in ≥10% of patients (all grade) or for grade ≥3, in ≥5% in either arm. Events are listed in descending order of frequency by all-grade incidence in the ibrutinib arm.

*The difference in all-grade incidence between arms is ≥10%. $P = .05$, $P = .005$, and $P = .02$ for comparisons of all-grade diarrhea, muscle spasms, and peripheral edema, respectively. $P = .0004$ and $P = .02$ for the comparisons of all-grade and grade ≥3 atrial fibrillation, and $P = .002$ and $P = .02$ for all-grade and grade ≥3 pneumonia, respectively. All P values (1-sided, testing ibrutinib > zanubrutinib event rates) were calculated using Barnard's exact test without adjustment for multiplicity.

†Includes the *Medical Dictionary for Regulatory Activities*-preferred term "neutrophil count decreased" in 1 and 4 patients in the ibrutinib and zanubrutinib arms, respectively.

‡ $P = .08$, $P = .001$, and $P = .009$ for the comparisons of all-grade bleeding, atrial fibrillation, and neutropenia, respectively. $P = .05$ and $P = .03$ for the comparisons of grade ≥3 atrial fibrillation and neutropenia, respectively. All P values are 2-sided without adjustment for multiplicity.³⁸

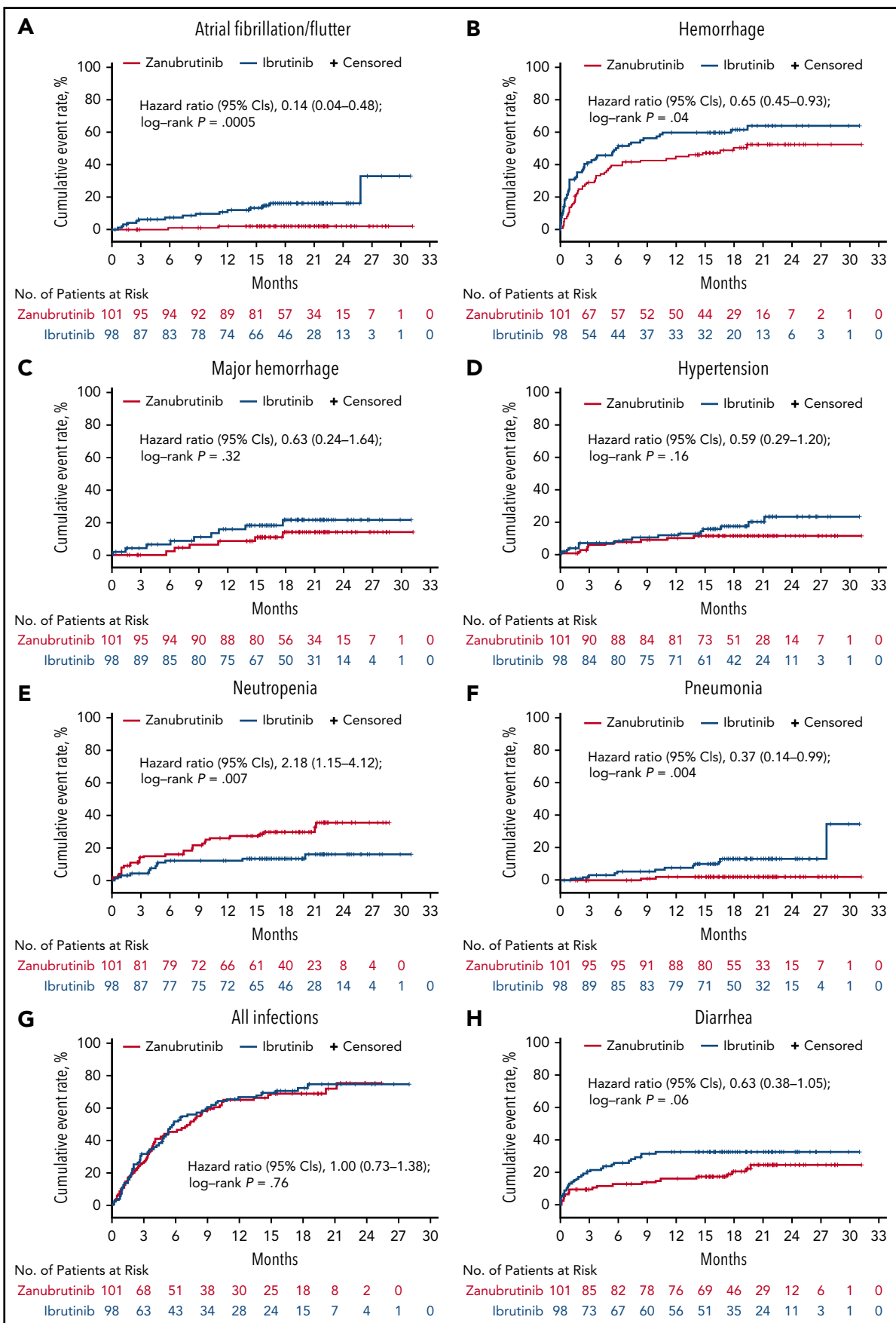


Figure 4. Time-to-event analyses for AEs. Time-to-event analyses for atrial fibrillation/flutter (A), hemorrhage (including minor bleeding/bruising) (B), major hemorrhage (C), hypertension (D), neutropenia (E), pneumonia (F), all infections (G), and diarrhea (H).

zanubrutinib patients, consistent with the frequency of diarrhea reported for each treatment arm.

Discussion

Most studies of BTK-inhibitor therapy in WM have been single-arm trials that have reported variable safety and tolerability owing to differences in study populations, prior treatment history, and the toxicity profiles of individual BTK inhibitors.^{8,11,31,32} Here, we report results from the largest randomized controlled trial of BTK-inhibitor monotherapy in WM to date and the only study comparing outcomes for 2 different BTK inhibitors.

This study demonstrated greater frequency of VGPRs among zanubrutinib-treated patients than among ibrutinib-treated patients after a median follow-up of 19.4 months. Phase 2 studies of ibrutinib and zanubrutinib have demonstrated improved response quality with longer treatment.^{10,11,21} A 27% VGPR rate was reported in the phase 2 ibrutinib study of R/R WM patients after a median treatment duration of almost 4 years.¹¹ In the phase 2 zanubrutinib study, 51% of 49 R/R patients achieved a VGPR or CR after a median follow-up of 36 months.³¹ Thus, the full potential for zanubrutinib patients to achieve CR/VGPR may not have been fully realized at the time of this analysis. Longer follow-up will allow an assessment of whether deeper responses correlate with more durable disease control, as has been observed with conventional therapies.^{32,33}

One unanticipated outcome of this study was the low proportion of patients with a *CXCR4*^{WHIM} mutation (9% overall) compared with historical series.^{10,34} Reasons for this include the use of Sanger sequencing for *CXCR4* mutation detection. Because *CXCR4* mutation status was a stratification variable, this was deemed the most expedient approach to identifying patients with common *CXCR4*^{WHIM} mutations. A 10% to 15% lower limit of mutant allele detection, the subclonal nature of *CXCR4*^{WHIM} mutations, and the lack of B-cell enrichment likely contributed to an underrepresentation of patients with documented *CXCR4*^{WHIM} mutations at randomization.³⁵ A post hoc analysis of baseline bone marrow from 190 (95%) patients using next-generation sequencing for *CXCR4* mutation detection (lower limit of mutant allele detection, 0.25%; see supplemental Methods) revealed the presence of *CXCR4*^{WHIM} mutations in 53 (28%) patients. VGPR rates based on next-generation sequencing data were comparable to those reported in the primary efficacy analysis based on Sanger sequencing, with zanubrutinib demonstrating a higher rate overall (29% and 21% among zanubrutinib and ibrutinib patients, respectively), as well as among *CXCR4*^{WT} patients (34% and 24%, respectively) and *CXCR4*^{WHIM} patients (18% and 10%, respectively), despite an imbalance in the number of patients with *CXCR4*^{WHIM} mutations favoring ibrutinib (34% and 22%, respectively) (supplemental Table 9).

Given that IgM overproduction is the hallmark of WM, the ability to reduce IgM provides an additional efficacy metric with which to evaluate BTK inhibitors. In this regard, results of 2 separate analyses demonstrated significantly deeper and more sustained IgM reductions with zanubrutinib vs ibrutinib.

We observed several clinically significant differences in the safety and tolerability profiles of the 2 BTK inhibitors, likely consistent with the higher degree of selectivity of zanubrutinib for BTK vs off-target kinases. Atrial fibrillation and hypertension

were reported at greater frequencies with ibrutinib compared with zanubrutinib. Atrial fibrillation is a well-recognized complication of ibrutinib therapy, and relative to an age-matched controlled population, patients appear to be at continuously increased risk for development of atrial fibrillation over the course of therapy.³⁶ Age ≥ 65 years and history of atrial fibrillation were identified as independent risk factors for atrial fibrillation in a pooled analysis of 4 randomized controlled studies of ibrutinib.³⁶ An analysis of this study suggests that the risk for development of atrial fibrillation later in the course of therapy was disproportionately higher with ibrutinib compared with zanubrutinib. Likewise, ibrutinib treatment has been associated with a significant cumulative risk for the development of hypertension.³⁷ In this study, the cumulative incidence of hypertension was higher in the ibrutinib treatment arm, with more ibrutinib-treated patients presenting with hypertension later in their treatment course.

In our study, zanubrutinib treatment was associated with less minor bleeding or bruising, as well as fewer major hemorrhages, than ibrutinib treatment. The combined effects of tyrosine kinase expressed in hepatocellular carcinoma and BTK inhibition in platelets of ibrutinib-treated patients may explain the higher frequency of bleeding noted among ibrutinib patients.¹⁷ Consistent with prior experience, the frequency of diarrhea among zanubrutinib patients in our study was half that reported among ibrutinib patients, on an exposure-adjusted basis (1.3 and 2.6 events per 100 person-months, respectively), likely due to less potent inhibition of epidermal growth factor receptor by zanubrutinib.²⁰

Grade 3 neutropenia (including febrile neutropenia) was more common among zanubrutinib patients. Because both agents inhibit BTK in neutrophil precursors by similar mechanisms, higher rates of severe neutropenia among zanubrutinib patients may be a function of its greater bioavailability.²⁰ Importantly, the higher incidence of severe neutropenia did not result in a higher infection incidence compared with that for ibrutinib. Paradoxically, the incidence of some respiratory tract infections (notably pneumonias) was higher among ibrutinib recipients.

The pharmacokinetics, pharmacodynamics, and selectivity profile of zanubrutinib predict that it has the potential to be more efficacious with a superior safety profile vs ibrutinib. This study established that zanubrutinib is highly effective in the treatment of WM; zanubrutinib is associated with important safety advantages, especially with respect to cardiovascular toxicity. Although the study did not meet its primary end point, there was a trend toward better disease control for zanubrutinib vs ibrutinib, including higher rates of VGPR, greater and more sustained IgM reduction, and greater improvement in most QoL measures. Longer follow-up will allow for a more comprehensive assessment of the relative efficacy and safety profiles of zanubrutinib and ibrutinib.

Acknowledgments

The authors thank the patients who participated in the study, their supporters, and the investigators and clinical research staff from the study centers.

This study was supported by research funding from BeiGene Inc, US medical writing and editorial assistance were funded by BeiGene and provided by Gordon Bray and Alessandra Richardson (Bio Connections, LLC). The study sponsor confirmed the accuracy of the data and compiled the data for analysis.

Authorship

Contribution: C.S.T., S.O., S.D., W.J., H.-P.L., G.C., R.G.O., P.M., B.E.W., R.G.S., H.M., S.M., A.T., J.J.C., J.C., C.F.d.L., D.B., E.L., J.V.M., M.M., T.S., M. Tani, M. Trneny, M.C.M., C.B., V.L., J.T., and M.D. (investigators) collected data; W.Y.C., J.S., S.R., A.C., and J.H. (BeiGene employees), C.S.T., R.G.O., A.T., C.B., V.L. (ASPEN study steering committee members), and J.T. (advisor) were responsible for study design, and, with M.D., S.D., R.G.S., and J.C., further contributed to data interpretation and analysis; and all authors contributed to data interpretation, reviewed the manuscript, made the decision to submit it for publication, vouched for the accuracy and completeness of the data, analyses, and adherence to the trial protocol.

Conflict-of-interest disclosure: C.S.T. receives research funding from Janssen and AbbVie and receives honoraria from Janssen, AbbVie, BeiGene, Novartis, and Roche. S.O. consults for AbbVie, Janssen, Gilead Sciences, Roche, Mundipharma, Merck, Bristol Myers Squibb, and Celgene; receives research funding from AbbVie, BeiGene, Janssen, Gilead Sciences, Roche, Celgene, and Epizyme; and receives honoraria from AbbVie, Janssen, Gilead Sciences, Roche, Mundipharma, Merck, Bristol Myers Squibb, and Celgene. S.D. participates in the speaker's bureau for Amgen, receives research funding from Janssen and BeiGene, and has travel expenses paid by Janssen. W.J. consults for AstraZeneca, Debiopharm, Janssen, Gilead Sciences, and Roche and receives research funding from Acerta, AstraZeneca, Janssen, BeiGene, Bayer, Celltrion, Debiopharm, Epizyme, Merck, MorphoSys, MEI Pharma, Servier, Roche, and TG Therapeutics. H.-P.L. has equity ownership in CSL Behring, receives honoraria from Roche, and has travel expenses paid by AbbVie. G.C. receives research funding from BeiGene, Acerta, and Glycomimetics. R.G.O. receives honoraria from Janssen and Celgene and consults for, and has travel expenses paid by, Janssen. B.E.W. consults for Roche and receives research funding from Roche and Gilead Sciences. R.G.S. consults for Janssen; receives honoraria from Janssen, Takeda, and Amgen; receives research funding from Gilead Sciences and Incyte; and has travel expenses paid by Janssen and Takeda. H.M. receives honoraria from Janssen and consults for AstraZeneca. A.T. consults for and receives honoraria from Janssen SpA, AstraZeneca, and AbbVie. J.C. consults for BeiGene, Janssen, Kymera Therapeutics, and Pharmacyclics and receives research funding from AbbVie, BeiGene, Janssen, Pharmacyclics, and TG Therapeutics. C.F.d.L. consults for and receives honoraria from Janssen, Celgene, and Amgen and receives research funding from, and has travel expenses paid by, Janssen, Celgene, Amgen, and Takeda. D.B. consults for, receives research funding from, and has travel expenses paid by Roche, Takeda, and Gilead Sciences. E.L. consults for Akcea Therapeutics, Adaptive Phage Therapeutics, and Pharmacyclics. J.M. consults for Celgene and Pharmacyclics, receives honoraria from Celgene, and participates in the speaker's bureau for Celgene. M.M. consults for Roche and Janssen. T.S. consults for AstraZeneca, Kite Pharma, Juno Therapeutics, and BeiGene; receives research funding from Pharmacyclics, Juno, BeiGene, AstraZeneca, TG Therapeutics, and Celgene; and participates in the speaker's bureau for Pharmacyclics, Janssen, AstraZeneca, and Seattle Genetics. M. Trneny is an employee of Charles University General Hospital; receives honoraria from Janssen, Gilead Sciences, Takeda, Bristol Myers Squibb, Amgen, AbbVie, Roche, MorphoSys, and Incyte; and consults for Takeda, Bristol Myers Squibb, Incyte, AbbVie, Amgen, Roche, Gilead Sciences, Janssen, Celgene, and MorphoSys. M.C.M. consults for Kite/Gilead and Servier

and has travel expenses paid by Celgene. C.B. receives honoraria from, consults for, and participates in the speaker's bureau for Roche, Janssen, Celltrion, and BeiGene and receives research funding from Roche, Janssen, and BeiGene. V.L. receives honoraria from AstraZeneca, Roche, Gilead Sciences, Amgen, AbbVie, and Janssen; consults for AstraZeneca, AbbVie, Roche, and Janssen; participates in the speaker's bureau for AbbVie and Janssen; and has travel expenses paid by AbbVie, Roche, and Janssen. J.T. receives research funding from BeiGene, Celgene, a Bristol-Myers Squibb Company, Pharmacyclics, Roche, and Takeda. W.Y.C. is an employee of BeiGene and has equity ownership in BeiGene and Bristol Myers Squibb. J.S. is an employee of and has equity ownership in BeiGene. S.R. is an employee of BeiGene, has equity ownership in BeiGene and Amgen, and holds patents and receives royalties from Roche Molecular Diagnostics. A.C. is an employee of, has equity ownership in, and has travel expenses paid by BeiGene. J.H. is an employee of, has a leadership role at, and has equity ownership in BeiGene. M.D. consults for and receives honoraria from Amgen, Janssen, Takeda, Celgene, and Bristol Myers Squibb. The remaining authors declare no competing financial interests.

A complete list of the ASPEN investigators appears in the supplemental Appendix.

ORCID profiles: C.S.T., 0000-0002-9759-5017; W.J., 0000-0003-1879-8084; R.G.S., 0000-0003-4120-2787; J.C., 0000-0001-9490-7532; C.F.d.L., 0000-0003-4930-9255; M. Trneny, 0000-0002-6952-6073; M.C.M., 0000-0002-3139-8379.

Correspondence: Constantine S. Tam, Peter MacCallum Cancer Centre, 305 Grattan St, Parkville, VIC 3050, Australia; e-mail: constantine.tam@petermac.org.

Footnotes

Submitted 14 May 2020; accepted 26 June 2020; prepublished online on *Blood* First Edition 31 July 2020. DOI 10.1182/blood.2020006844.

Presented in abstract form at the 56th annual meeting of the American Society of Clinical Oncology, virtual, 29 May 2020, and at the 56th Annual Meeting of the American Society of Clinical Oncology, virtual, 29 May 2020.

Individual participant data will not be shared prior to regulatory approval of zanubrutinib for the treatment of WM. Requests for copies of the protocol and statistical analysis plan will be considered; please contact Constantine S. Tam (constantine.tam@petermac.org).

The online version of this article contains a data supplement.

There is a *Blood* Commentary on this article in this issue.

The publication costs of this article were defrayed in part by page charge payment. Therefore, and solely to indicate this fact, this article is hereby marked "advertisement" in accordance with 18 USC section 1734.

REFERENCES

1. Pal Singh S, Dammeyer F, Hendriks RW. Role of Bruton's tyrosine kinase in B cells and malignancies [published correction appears in *Mol Cancer*. 2019;18(10):79]. *Mol Cancer*. 2018;17(1):57.
2. Gertz MA. Waldenström macroglobulinemia: 2019 update on diagnosis, risk stratification, and management. *Am J Hematol*. 2019;94(2):266-276.
3. Treon SP, Xu L, Yang G, et al. MYD88 L265P somatic mutation in Waldenström's macroglobulinemia. *N Engl J Med*. 2012;367(9):826-833.
4. Cao Y, Hunter ZR, Liu X, et al. CXCR4 WHIM-like frameshift and nonsense mutations promote ibrutinib resistance but do not suppress MYD88(L265P)-directed survival signaling in Waldenström macroglobulinemia cells. *Br J Haematol*. 2015;168(5):701-707.
5. Cao Y, Hunter ZR, Liu X, et al. The WHIM-like CXCR4(S338X) somatic mutation activates AKT and ERK, and promotes resistance to ibrutinib and other agents used in the treatment of Waldenström's macroglobulinemia. *Leukemia*. 2015;29(1):169-176.
6. Roccaro AM, Sacco A, Jimenez C, et al. C1013G/CXCR4 acts as a driver mutation of tumor progression and modulator of drug resistance in lymphoplasmacytic lymphoma. *Blood*. 2014;123(26):4120-4131.
7. Hunter ZR, Xu L, Yang G, et al. The genomic landscape of Waldenström macroglobulinemia is characterized by highly recurring MYD88 and WHIM-like CXCR4 mutations, and small somatic deletions associated with B-cell lymphomagenesis. *Blood*. 2014;123(11):1637-1646.
8. Treon SP, Gustine J, Meid K, et al. Ibrutinib monotherapy in symptomatic, treatment-naïve patients with Waldenström macroglobulinemia. *J Clin Oncol*. 2018;36(27):2755-2761.
9. Yang G, Buhrlage SJ, Tan L, et al. HCK is a survival determinant transactivated by mutated MYD88, and a direct target of ibrutinib. *Blood*. 2016;127(25):3237-3252.

10. Treon SP, Tripsas CK, Meid K, et al. Ibrutinib in previously treated Waldenström's macroglobulinemia. *N Engl J Med*. 2015;372(15):1430-1440.
11. Treon SP, Meid K, Gustine J, et al. Long-term follow-up of previously treated patients who received ibrutinib for symptomatic Waldenström's macroglobulinemia: update of pivotal clinical trial [abstract]. *Blood*. 2017;130(suppl 1). Abstract 2766.
12. de Weerd I, Koopmans SM, Kater AP, van Gelder M. Incidence and management of toxicity associated with ibrutinib and idelalisib: a practical approach. *Haematologica*. 2017;102(10):1629-1639.
13. Gustine JN, Meid K, Dubeau TE, Treon SP, Castillo JJ. Atrial fibrillation associated with ibrutinib in Waldenström macroglobulinemia. *Am J Hematol*. 2016;91(6):E312-E313.
14. Dimopoulos MA, Tedeschi A, Trotman J, et al; iNNOVATE Study Group and the European Consortium for Waldenström's Macroglobulinemia. Phase 3 trial of ibrutinib plus rituximab in Waldenström's macroglobulinemia. *N Engl J Med*. 2018;378(25):2399-2410.
15. Kamel S, Horton L, Ysebaert L, et al. Ibrutinib inhibits collagen-mediated but not ADP-mediated platelet aggregation. *Leukemia*. 2015;29(4):783-787.
16. Levade M, David E, Garcia C, et al. Ibrutinib treatment affects collagen and von Willebrand factor-dependent platelet functions. *Blood*. 2014;124(26):3991-3995.
17. Shatzel JJ, Olson SR, Tao DL, McCarty OJT, Danilov AV, DeLoughery TG. Ibrutinib-associated bleeding: pathogenesis, management and risk reduction strategies. *J Thromb Haemost*. 2017;15(5):835-847.
18. Tang CPS, McMullen J, Tam C. Cardiac side effects of bruton tyrosine kinase (BTK) inhibitors. *Leuk Lymphoma*. 2018;59(7):1554-1564.
19. Shafaattalab S, Lin E, Christidi E, et al. Ibrutinib displays atrial-specific toxicity in human stem cell-derived cardiomyocytes. *Stem Cell Reports*. 2019;12(5):996-1006.
20. Tam CS, Trotman J, Opat S, et al. Phase 1 study of the selective BTK inhibitor zanubrutinib in B-cell malignancies and safety and efficacy evaluation in CLL. *Blood*. 2019;134(11):851-859.
21. Tam CSL, Opat S, Marlton P, et al. Three-year follow-up of treatment-naïve and previously treated patients with Waldenström macroglobulinemia (WM) receiving single-agent zanubrutinib. *J Clin Oncol*. 2020;38(suppl 15):8051.
22. Dimopoulos MA, Kastritis E, Owen RG, et al. Treatment recommendations for patients with Waldenström macroglobulinemia (WM) and related disorders: IWWM-7 consensus. *Blood*. 2014;124(9):1404-1411.
23. Owen RG, Kyle RA, Stone MJ, et al; V1th International Workshop on Waldenström macroglobulinaemia. Response assessment in Waldenström macroglobulinaemia: update from the V1th International Workshop. *Br J Haematol*. 2013;160(2):171-176.
24. Sato T. On the variance estimator for the Mantel-Haenszel risk difference. *Biometrics*. 1989;45(4):1323-1324.
25. Mantel N, Haenszel W. Statistical aspects of the analysis of data from retrospective studies of disease. *J Natl Cancer Inst*. 1959;22(4):719-748.
26. Kaplan EL, Meier P. Nonparametric estimation from incomplete observations. *J Am Stat Assoc*. 1958;53(282):457-481.
27. Brookmeyer R, Crowley J. A confidence interval for the median survival time. *Biometrics*. 1982;38(1):29-41.
28. Greenwood M. A report on the natural duration of cancer. London, England: His Majesty's Stationery Office; 1926.
29. Morel P, Duhamel A, Gobbi P, et al. International prognostic scoring system for Waldenström macroglobulinemia. *Blood*. 2009;113(18):4163-4170.
30. Owen RG, McCarthy H, Rule S, et al. Acalabrutinib monotherapy in patients with Waldenström macroglobulinemia: a single-arm, multicentre, phase 2 study. *Lancet Haematol*. 2020;7(2):e112-e121.
31. Dimopoulos MA, Trotman J, Tedeschi A, et al; iNNOVATE Study Group and the European Consortium for Waldenström's Macroglobulinemia. Ibrutinib for patients with rituximab-refractory Waldenström's macroglobulinaemia (iNNOVATE): an open-label substudy of an international, multicentre, phase 3 trial. *Lancet Oncol*. 2017;18(2):241-250.
32. Treon SP, Yang G, Hanzis C, et al. Attainment of complete/very good partial response following rituximab-based therapy is an important determinant to progression-free survival, and is impacted by polymorphisms in FCGR3A in Waldenström macroglobulinaemia. *Br J Haematol*. 2011;154(2):223-228.
33. Paludo J, Abeykoon JP, Gertz MA, et al. Depth of response in Waldenström macroglobulinemia. Presented at the 10th International Workshop on Waldenström Macroglobulinemia, 12 October 2018, New York, NY.
34. García-Sanz R. WM, MYD88, and CXCR4: following the thread [published correction appears in *Blood*. 2017;130(12):1485]. *Blood*. 2016;128(6):746-748.
35. Xu L, Hunter ZR, Tsakmaklis N, et al. Clonal architecture of CXCR4 WHIM-like mutations in Waldenström macroglobulinaemia. *Br J Haematol*. 2016;172(5):735-744.
36. Brown JR, Moslehi J, O'Brien S, et al. Characterization of atrial fibrillation adverse events reported in ibrutinib randomized controlled registration trials. *Haematologica*. 2017;102(10):1796-1805.
37. Dickerson T, Wiczer T, Waller A, et al. Hypertension and incident cardiovascular events following ibrutinib initiation. *Blood*. 2019;134(22):1919-1928.
38. He X, Chen L, Lei L, Xia H, Lee M. A simple method for estimating confidence intervals for exposure adjusted incidence rate and its applications to clinical trials. *J Biom Biostat*. 2015;6(3):238.