

PAPER • OPEN ACCESS

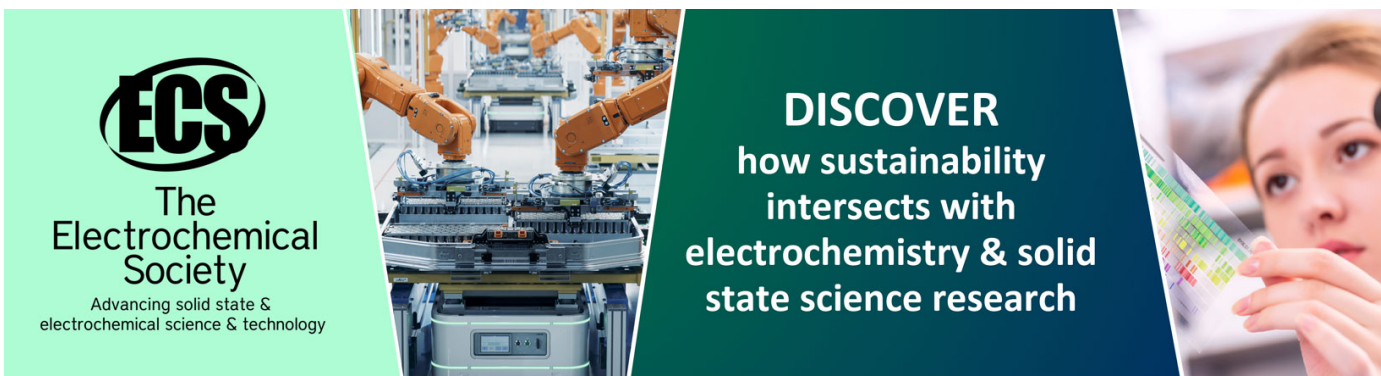
Twelve-crystal prototype of Li_2MoO_4 scintillating bolometers for CUPID and CROSS experiments

To cite this article: K. Alfonso *et al* 2023 *JINST* **18** P06018

View the [article online](#) for updates and enhancements.

You may also like

- [Fast \$b\$ -tagging at the high-level trigger of the ATLAS experiment in LHC Run 3](#)
G. Aad, B. Abbott, K. Abeling *et al.*
- [The ATLAS Fast Tracker system](#)
The ATLAS collaboration, G. Aad, B. Abbott *et al.*
- [Operation and performance of the ATLAS semiconductor tracker in LHC Run 2](#)
The ATLAS collaboration, Georges Aad, Brad Abbott *et al.*



ECS
The
Electrochemical
Society
Advancing solid state &
electrochemical science & technology

DISCOVER
how sustainability
intersects with
electrochemistry & solid
state science research

Twelve-crystal prototype of Li_2MoO_4 scintillating bolometers for CUPID and CROSS experiments



CUPID and CROSS collaborations

E-mail: cupid.publications@lngs.infn.it, cross.publications@lsc-canfranc.es

ABSTRACT: An array of twelve 0.28 kg lithium molybdate (LMO) low-temperature bolometers equipped with 16 bolometric Ge light detectors, aiming at optimization of detector structure for CROSS and CUPID double-beta decay experiments, was constructed and tested in a low-background pulse-tube-based cryostat at the Canfranc underground laboratory in Spain. Performance of the scintillating bolometers was studied depending on the size of phonon NTD-Ge sensors glued to both LMO and Ge absorbers, shape of the Ge light detectors (circular vs. square, from two suppliers), in different light collection conditions (with and without reflector, with aluminum coated LMO crystal surface). The scintillating bolometer array was operated over 8 months in the low-background conditions that allowed to probe a very low, $\mu\text{Bq/kg}$, level of the LMO crystals radioactive contamination by ^{228}Th and ^{226}Ra .

KEYWORDS: Cryogenic detectors; Double-beta decay detectors; Particle identification methods; Scintillators, scintillation and light emission processes (solid, gas and liquid scintillators)

ARXIV EPRINT: [2304.04611](https://arxiv.org/abs/2304.04611)

Contents

1	Introduction	1
2	Twelve-crystal array of Li_2MoO_4 scintillating bolometers	2
3	Detector operation at LSC	3
4	Results and discussion	6
4.1	Time constants of LMO and LD signals	8
4.2	Performance of LMO bolometers	8
4.3	Performance of Ge light detectors	10
4.4	Scintillation signal in different light collection conditions	12
4.5	Radiopurity of $\text{Li}_2^{100}\text{MoO}_4$ crystal scintillators	14
5	Conclusions	16
	The CUPID and CROSS collaborations	23

1 Introduction

Neutrinoless double-beta ($0\nu\beta\beta$) decay is a hypothetical spontaneous nuclear disintegration, which transforms quasi-simultaneously two neutrons to two protons with emission of only two electrons [1–8]. In contrast to two-neutrino double-beta ($2\nu\beta\beta$) decay, which results to the emission of additional anti-neutrinos accompanied to two electrons [9–12], the $0\nu\beta\beta$ process violates the total lepton number by two units that requires a new physics beyond the Standard Model of particle physics to incorporate the lepton number violation [1–8]. The existence of $0\nu\beta\beta$ decay is additionally motivated by the discovery of the finite neutrino mass [2], a necessary condition for $0\nu\beta\beta$ process to occur [13, 14]. The $0\nu\beta\beta$ decay rate, being proportional to the second power of the lepton number-violating parameter (i.e. an effective Majorana neutrino mass for the “standard” $0\nu\beta\beta$ mechanism of light Majorana neutrino exchange), is expected to be significantly reduced in comparison to the $2\nu\beta\beta$ process, already observed in dozen isotopes with the half-lives $\sim 10^{18}$ – 10^{24} yr [9–11]. The most sensitive experiments have recently probed the existence of a $0\nu\beta\beta$ process with half-lives $\sim 10^{24}$ – 10^{26} yr for a few $\beta\beta$ isotopes [15–22]. To further improve the experimental sensitivity one should increase the isotope of interest exposure, achieve as high as possible energy resolution and low, ideally zero background [1, 23–27].

Bolometers (also called as low-temperature calorimeters) are among the widely and long-term-used technologies in $0\nu\beta\beta$ decay search [25, 28–34], in particular for ^{82}Se [19], ^{100}Mo [20, 35], and ^{130}Te [36]. Such solid-state detectors work at temperatures close to the absolute zero and register particle interactions using phonon sensors, detecting elementary vibrational motions of a crystal lattice induced by the energy release in the detector medium [37–39]. The bolometric technology features

“universality”, allowing to use different detector materials (i.e. dielectric diamagnetic crystals, semi-conductors) containing isotopes of interest and providing excellent performance (e.g. high energy resolution, high detection efficiency, low energy threshold, particle identification capability) [29, 31, 33].

The largest bolometric $0\nu\beta\beta$ experiment CUORE (Cryogenic Underground Observatory of Rare Events) is currently operating an array of 988 5-cm-cube TeO_2 detectors with a total mass of 741 kg at the Gran Sasso National Laboratory (LNGS) in Italy, already acquiring ton \times yr exposure [40, 41]. Despite of a great achievement on realization of experiment using high-performance radiopure detectors operated in very low-background conditions, the lack of particle identification between α and $\gamma(\beta)$ results to the dominant α counting rate of $\sim 10^{-2}$ counts/yr/kg/keV in the vicinity of ^{130}Te $Q_{\beta\beta}$ -value (2528 keV) [42], which limits the experimental $0\nu\beta\beta$ sensitivity to $\sim 10^{26}$ yr [43].

To improve the sensitivity by an order of magnitude (10^{27} yr) exploiting the existing CUORE infrastructure, a next-generation $0\nu\beta\beta$ bolometric experiment CUPID (CUORE Upgrade with Particle IDentification) has been proposed [44, 45]. ^{100}Mo -enriched lithium molybdate ($\text{Li}_2^{100}\text{MoO}_4$) scintillating bolometers with particle identification capabilities are selected [45] to achieve a background index of $\sim 10^{-4}$ counts/yr/kg/keV at the $Q_{\beta\beta}$ -value of ^{100}Mo (3034 keV).

The technology of $\text{Li}_2^{100}\text{MoO}_4$ low-temperature detectors with phonon-scintillation dual readout, using complementary thin Ge bolometers for photon detection, has been proposed in [46, 47], developed by the LUMINEU [48–50] and validated on a larger scale by the CUPID-Mo [51–53] collaborations. In both LUMINEU and CUPID-Mo experiments — realized respectively with 4-crystal [48, 50] and 20-crystal [51] arrays operated in the EDELWEISS setup at the Modane underground laboratory in France — cylindrical crystals ($\varnothing 44 \times 45$ mm, ~ 0.21 kg, ^{100}Mo enrichment $\sim 97\%$) have been used.

In order to construct a more compact detector structure to improve multi-site events detection and better occupy the available experimental volume, a cubic shape is preferred. Cubic crystals have been selected for CUPID [45] as well for CROSS (Cryogenic Rare-event Observatory with Surface Sensitivity), a project to demonstrate the potential of metal-coated bolometers capable of particle identification of near surface interactions [54–59]. Several cubic lithium molybdate samples with a size of $45 \times 45 \times 45$ mm each — produced following the LUMINEU crystals fabrication protocol [48, 49, 60] — have been recently operated by CROSS and CUPID collaborations at the Canfranc underground laboratory (LSC) in Spain [61], and at the LNGS [62, 63]. The results of these tests confirm LUMINEU and CUPID-Mo findings on high energy resolution, high crystal radiopurity, and an efficient scintillation-assisted particle identification despite the modest light output of the material [33, 48, 51].

In continuation of a joint CUPID and CROSS R&D activity aiming at the optimization of the detector structure with cubic crystals, we constructed a 12-crystal array to explore the $\text{Li}_2^{100}\text{MoO}_4$ bolometric and scintillation performance using different-size phonon sensors and photodetectors, and operating in different light collection conditions, i.e. with and without reflector. A description of the 12-crystal array, its underground operation at LSC, and the results of detector characterization are subjects of the present paper.

2 Twelve-crystal array of Li_2MoO_4 scintillating bolometers

Twelve cubic-shaped Li_2MoO_4 (LMO) crystal scintillators with 45-mm side and 0.28 kg each were used for the detector construction. All the crystals are enriched in ^{100}Mo ($\sim 98\%$) [54, 61], except the one, which is depleted in ^{100}Mo [64]. We randomly chose 11 LMOs from a batch of 32 identical

crystals produced for the CROSS experiment [54]. Four crystals were coated with Al film of 2.0 μm or 0.2 μm thickness and with/without a SiO underlayer deposited by evaporation on the four lateral faces. The lateral side of another four LMOs was surrounded by a reflective film (Vikuiti™), while the rest LMOs were operated without a reflector.

Sixteen thin bolometric light detectors (LDs) made of Ge wafers with electron-grade purity were installed to detect the scintillation light from the LMO crystals. All wafers were supplied by Umicore (Belgium) [65], but two of them (labeled here as LD-s2 and LD-s4) were produced by MTI Corporation (U.S.) [66]. Half of the Ge wafers have a circular shape (with a size of $\varnothing 45 \times 0.18$ mm), as used in CUPID-0 [67] and CUPID-Mo [51]. The other wafers are square-shaped (with a size of $45 \times 45 \times 0.30$ mm for Umicore and $45 \times 45 \times 0.50$ mm for MTI produced slabs) in order to better fit to the shape of LMOs and thus increase the light collection. All Ge slabs were SiO-coated from both sides (with an effective coating thickness of ~ 70 nm) to reduce the light reflection [51, 67, 68]. In addition, a single circular LD has Al concentric electrodes deposited on one surface, which can be used to amplify thermal signals exploiting the Neganov-Trofimov-Luke effect [69] (not exploited in the present work).

LMO crystals and Ge slabs were equipped with Neutron Transmutation Doped Ge [70] thermistors (NTDs). Eight LMOs were instrumented with “standard”-size NTDs ($3 \times 3 \times 1$ mm), while larger NTDs ($9 \times 3 \times 1$ mm) were used for the other LMO crystals to increase phonon collection surface with the aim of improving the signal amplitude. Taking into account a low mass of Ge wafers used in our LDs, these devices were instrumented with small-size sensors to reduce the impact of the sensor’s heat capacity: the dimension of twelve of them is $1 \times 3 \times 1$ mm, while the rest four are either $0.7 \times 3 \times 1$ mm or $0.5 \times 3 \times 1$ mm. All NTDs were produced from Ge wafers with similar irradiation parameters yielding uniform thermal responses. For example, the temperature-dependent resistance of NTDs with the sizes of $9 \times 3 \times 1$ mm can be approximated as $R(T) = R_0 \cdot e^{(T_0/T)^{0.5}}$ with the parameters $R_0 \sim 3.6 \Omega$ and $T_0 \sim 3.7$ K. The sensors were epoxy glued onto the crystals surface, using 6 (12) spots of bi-component glue Araldite Rapid for the standard (large) NTDs of LMOs and a drop of glue for the LDs. In addition to NTDs, small heaters (P-doped Si chip [71]) were glued on the LMOs top with a drop of the Araldite glue and used for the periodical injection of the constant Jules power for the stabilization of the thermal gain [72].

The sensor gluing and detector assembly have been realized in a clean room (ISO class 4) of the IJCLab (Orsay, France). The mechanical structure to support detectors is based on the design of a 8-crystal prototype tested at LNGS (Italy) [62] with modifications aiming to reduce the spacing between crystal and light detectors from 6.5 mm to 0.5 mm. The detector structure consists of a Cu frame, polytetrafluoroethylene (PTFE) elements and 4 LMOs or LDs per floor. Prior the use, all Cu and PTFE parts were cleaned by chemical etching (e.g. see a procedure in [73]). The NTDs and heaters were ultrasonically wire-bonded with $\varnothing 25$ - μm Au wires, which are then crimped to copper pins, while Constantan silk-covered wires were crimped to the other side of the pins, providing electrical contacts. Photos of the assembled 12-crystal array together with examples of circular and square-shaped Ge LDs are shown in figure 1; the detector composition is listed in table 1.

3 Detector operation at LSC

The tower was transported to LSC and installed in the CROSS cryogenic facility (C2U) [61, 74], equipped with a pulse-tube cryostat by CryoConcept (France). The dilution refrigerator was cooled

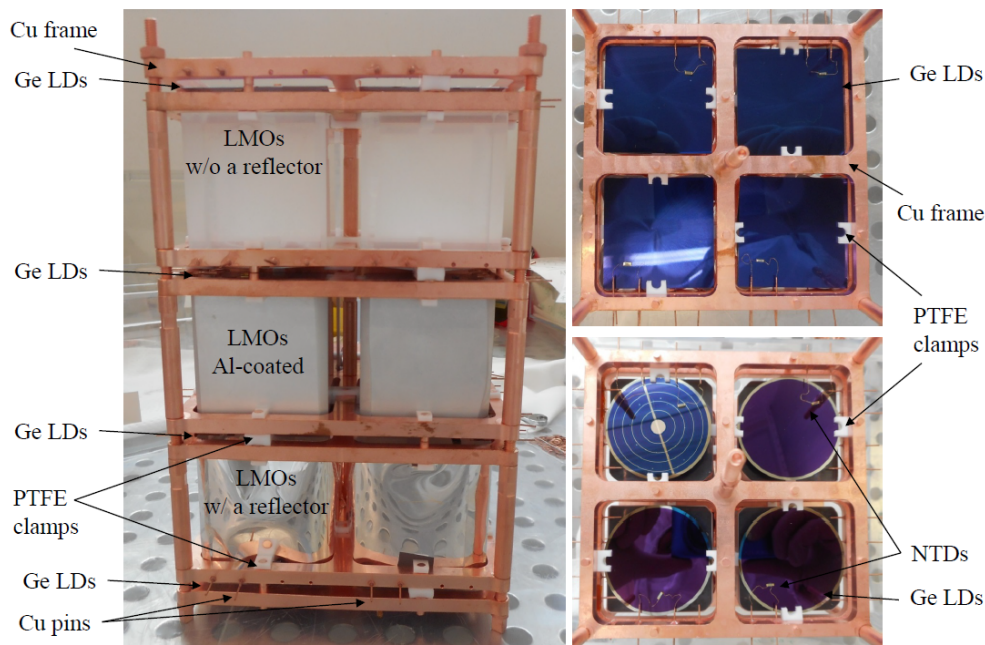


Figure 1. (Left) Twelve-crystal array of LMO scintillating bolometers, constructed from three 4-crystal floors containing 45-mm-side cubic LMO scintillating bolometers and four floors Ge wafers acting as light detectors from top and bottom of each LMO in the tower. The top layer of LMO crystals is fully open (no reflector), the middle layer contains only Al-coated LMOs, while the bottom layer LMOs are surrounded by a reflective film. (Right, top) A view on a layer of square-shaped Ge LDs. (Right, bottom) A top view of a layer of circular Ge LDs; one device has concentric Al electrodes to exploit signal amplification based on the Neganov-Trofimov-Luke effect.

down to 4 K by using a pulse-tube Cryomech PT415. In order to mitigate pulse-tube-induced vibrations [75], the cryostat is assisted by the Ultra-Quiet Technology™ (UQT) [76] to mechanically decouple the pulse tube from the dilution unit. In addition, the 12-crystal array was spring-suspended from the detector plate (see figure 2) to further reduce vibrational noise.

The underground location of the cryostat allows to have a reduced muon flux thanks to the rock overburden of the laboratory (2450 m water equivalent) [78]. Additionally, the detector volume inside the cryostat is shielded on the top by a 13 cm thick disk made of interleaved lead and copper (partially seen in figure 2), and on the sides and bottom by an external 25 cm thick layer of low-radioactivity lead. Finally, a deradonized air flow ($\sim 1 \text{ mBq/m}^3$ of Rn [79]) around the cryostat had been supplied during the whole time of the experiment.

The detectors are readout using a low-noise room-temperature DC front-end electronics, restyled from the Cuoricino experiment [80]. The data acquisition (DAQ) system is composed of two 12-channel boards with a programmable 6-pole Bessel-Thomson anti-aliasing filter and integrated 24-bit ADC [81, 82]. Since we were able to readout simultaneously only 24 channels from 30 available, we used two configurations of active channels with 6 LDs of the tower switched off (by swapping cables). The injection of thermal pulses through the heaters glued on LMOs is performed using by Keysight 33500B wave-function generator. This generator is also utilized to send periodically a burst of photons, from a room-temperature LED (880 nm) to the experimental volume of the cryostat through an optic fibre, which can be detected by Ge LDs and used for detector optimization and/or stabilization (as heaters for LMOs).

Table 1. Composition of the 12-crystal assembly. Light collection conditions are specified as reflector, which includes: 1) absence/presence of a reflector material around LMOs; 2) antireflective coating of LDs. Detector IDs are listed in the last column. Crystal LMO-12 is produced from Mo depleted in ^{100}Mo , while the other samples are ^{100}Mo -enriched. Four crystals were coated with an Al layer with a thickness of either $2.0\ \mu\text{m}$ (LMO-5 and LMO-7) or $0.2\ \mu\text{m}$ (LMO-6 and LMO-8), but the SiO underlayer was deposited only for half of them (LMO-7 and LMO-8). The major part of LMOs and LDs were equipped with NTDs of $3 \times 3 \times 1\ \text{mm}$ and $1 \times 3 \times 1\ \text{mm}$, respectively; the exceptions are indicated as follows: a — $9 \times 3 \times 1\ \text{mm}$; b — $0.7 \times 3 \times 1\ \text{mm}$; c — $0.5 \times 3 \times 1\ \text{mm}$.

Floor	Type	Reflector	Detector ID			
			LD-s1	LD-s2	LD-s3	LD-s4
Ge LD	square		LD-s1	LD-s2	LD-s3	LD-s4
LMO	enriched	absent	LMO-1	LMO-2	LMO-3 a	LMO-4 a
Ge LD	circular		LD-c1	LD-c2	LD-c3	LD-c4
LMO	enriched	Al coating of LMO (reflective layer)	LMO-5	LMO-6	LMO-7	LMO-8
Ge LD	square		LD-s5	LD-s6	LD-s7	LD-s8
LMO	enriched, depleted	Vikuiti film surrounding LMO (reflective film)	LMO-9 a	LMO-10	LMO-11 a	LMO-12
Ge LD	circular		LD-c5 c	LD-c6 b	LD-c7 c	LD-c8 b

The detectors were maintained at 14 mK for the entire measurement period. All channels, except one LMO with Al coating (LMO-8 in table 1), were found to be operational after the cool down. The data taking was realized from the end of September 2020 till the beginning of May 2021 ($\sim 80\%$ duty cycle over 234 days of measurements). We performed γ calibration and background measurements, which amount to 39% and 58% of the full data, respectively.¹ The LMO detectors were calibrated using the most intense γ peaks from a ^{232}Th source made of a thoriated tungsten wire and inserted inside the lead shield. Moreover, this source was also used to calibrate the Ge LDs via the X-ray fluorescence emitted by the LMOs and absorbed by the LDs. Specifically, we foresee detection of a doublet of Mo K_α and K_β X-rays with energies of 17.5 and 19.6 keV, and intensities 65% and 11%, respectively. Such method of LD calibration has been recently exploited in [51, 83, 84].

The continuous data were acquired with a sampling rate of 2 kS/s; the cut-off frequency of the low-pass Bessel filter was set to 300 Hz. The pulser/LED system was used to define the optimal detector working points of LMOs/LDs, optimizing the signal-to-noise ratio [69]. All LMOs and a part of LDs were biased with a few nA current on the NTD sensor resulting in a few M Ω resistance, while another part of LDs were polarized with even higher bias (up to 15 nA) reducing their NTD resistances to hundreds of k Ω . A strong polarization of the NTD sensor implies the warmer absorber temperature and thus a reduced detector's sensitivity to thermal fluctuations, as well as the reduced contribution of the Johnson noise (thanks to a lower NTD resistance).

The data processing is realized offline using a MATLAB-based analysis tool developed at IJCLab [85]. The data were triggered and then filtered using the Gatti-Manfredi optimum filter [86].

¹The rest of the data collection was dedicated to neutron calibration (0.5%) and test measurements (3%), not described here.

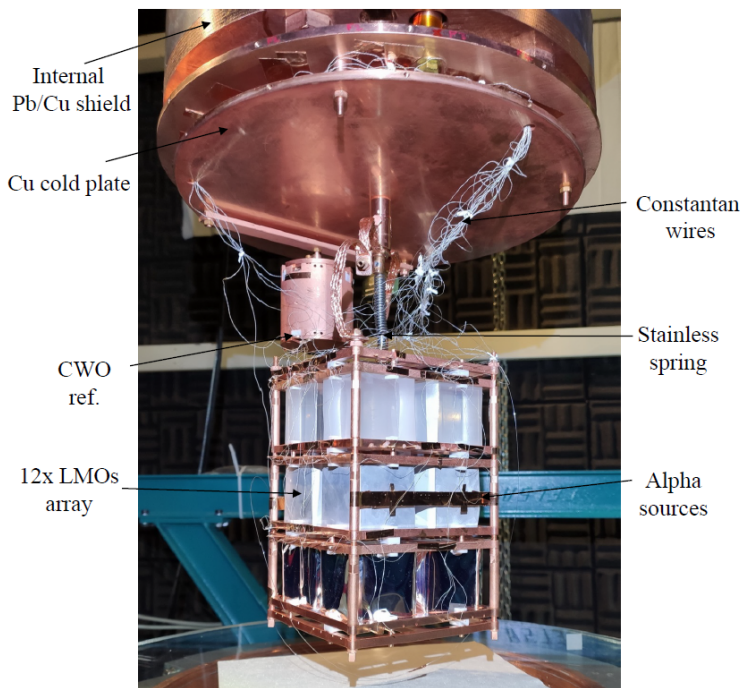


Figure 2. The 12-crystal array of LMO scintillating bolometers spring-suspended from the detector plate of the CROSS cryostat. A single module of $^{116}\text{CdWO}_4$ scintillating bolometer, used as a reference in the set-up [57, 73, 74, 77], was mounted directly to the plate to test the noise conditions (not discussed here). A copper strip in front of the middle layer of LMOs fixes two U alpha sources to probe the particle identification capability of Al-coated LMOs.

This matched filter maximizes the signal-to-noise ratio of the filtered data using the information about the signal shape (average signal) and the representative noise spectrum in the frequency domain. For each triggered signal, the program evaluates the signal amplitude (i.e. energy) and calculates several pulse-shape parameters. The parameters relevant for the present study are two time constants of a detector signal (rise and decay time parameters, see section 4.1), a correlation value (a Pearson’s linear correlation coefficient between the triggered and average signals, both after the optimum filtering), and a normalized signal amplitude (a ratio of amplitudes extracted by the filtering and fitting methods as described in [54]). In order to establish coincidences between the LMO and LD, we used trigger positions of LMO channels and accounting for a difference in the time response between LMOs and LDs, similarly to the method described in [87].

4 Results and discussion

The results on the 12-crystal prototype characterization are summarized in tables 2 and 3 for LMOs and LDs, respectively. The LMO and LD performance, effect of the light collection conditions and the LMO crystals radiopurity are discussed in the next sections.²

²Performance of the LMO detector based on ^{100}Mo -depleted lithium molybdate crystal, LMO-12, is reported here only for the sake of completeness, while a study of such crystals as scintillating bolometers is a subject of a dedicated publication [88].

Table 2. Performance of LMO bolometers. The detectors instrumented with larger NTDs ($9 \times 3 \times 1$ mm instead of $3 \times 3 \times 1$ mm) are marked with a superscript ^a. All NTDs were polarized with the 3 nA current. We report the working resistances of NTDs, the rise and decay times, the sensitivity, and the baseline noise resolution of each operational detector. In addition, the energy resolution of the 2615 keV γ -ray peak of ²⁰⁸Tl from the ²³²Th source, detected by LMOs with a baseline noise below 10 keV FWHM, is quoted in the last column.

LMO ID	R_{NTD} (M Ω)	Rise time (ms)	Decay time (ms)	Sensitivity (nV/keV)	FWHM _{Noise} (keV)	FWHM at 2615 keV (keV)
LMO-1	2.4	16	111	19	4.6	7.4(4)
LMO-2	2.4	24	100	14	36	–
LMO-3 ^a	4.3	11	85	35	26	–
LMO-4 ^a	3.7	14	103	22	5.0	7.8(3)
LMO-5	0.90	3.9	68	5	93	–
LMO-6	2.2	7.0	74	11	16	–
LMO-7	0.54	5.5	53	3	27	–
LMO-9 ^a	4.8	17	126	32	3.8	6.9(5)
LMO-10	2.7	23	174	8	8.8	11.3(13)
LMO-11 ^a	5.3	15	96	40	4.4	7.6(3)
LMO-12	3.0	16	97	29	3.8	6.8(3)

Table 3. Performance of LDs. The devices instrumented with smaller NTDs, $0.7 \times 3 \times 1$ mm or $0.5 \times 3 \times 1$ mm instead of $1 \times 3 \times 1$ mm, are marked with superscripts ^b and ^c, respectively. More than a half of LD NTDs were polarized with 15 nA current; the exceptions are LD-s2 (5 nA), LD-s3 (8 nA), LD-s7 (3 nA), and the bottom layer of LDs (2 nA each). We report the NTD resistance at the working point, the rise and decay time parameters, the voltage signal amplitude per unit deposited energy, the baseline noise resolution at the optimum filter output and the resolution for the 17.5 keV X-ray peak of Mo.

LD ID	R_{NTD} (M Ω)	Rise time (ms)	Decay time (ms)	Sensitivity (μ V/keV)	FWHM _{Noise} (keV)	FWHM at 17.5 keV (keV)
LD-s1	0.47	1.5	4.6	0.39	0.32	1.0(3)
LD-s2	0.72	1.3	5.1	0.42	0.41	1.4(4)
LD-s3	2.2	1.7	5.3	0.36	0.32	1.2(2)
LD-s4	0.63	1.4	5.9	0.40	0.30	1.1(1)
LD-c1	0.43	1.4	4.2	0.55	0.19	0.88(7)
LD-c2	0.46	1.3	3.2	0.59	0.40	1.9(4)
LD-c3	0.40	1.3	3.7	0.80	0.18	0.95(5)
LD-c4	0.40	1.4	4.0	0.60	0.16	0.96(5)
LD-s5	0.56	1.5	5.4	0.22	0.46	1.0(1)
LD-s6	0.47	1.7	5.4	0.33	0.33	1.1(1)
LD-s7	5.6	1.7	4.2	1.2	0.19	1.0(1)
LD-s8	0.47	1.6	5.2	0.38	0.34	0.94(6)
LD-c5 ^c	4.1	2.0	6.7	2.0	0.09	0.64(7)
LD-c6 ^b	4.9	2.0	7.1	2.7	0.06	0.88(7)
LD-c7 ^c	4.2	2.0	6.1	2.4	0.08	0.83(7)
LD-c8 ^b	4.4	2.0	7.8	2.2	0.06	0.90(6)

4.1 Time constants of LMO and LD signals

Fast time response is essential for LMO scintillating bolometers as a viable tool for the rejection of pile-up events, i.e. a source of a notable background in ^{100}Mo -enriched thermal detectors for $0\nu\beta\beta$ decay search [89–93]. In order to characterize a time response of each triggered signal, we computed the following two parameters: 1) rise time defined as the time required by the signal to increase from 10% to 90% of its height; 2) decay time, the time required to decrease from 90% to 30% of its height. The rise and decay time parameters for signals of LMO (2–3 MeV events) and LD (12–24 keV) are listed in table 2 and 3, respectively. The choice of the energy range corresponds to the region of interest for the detectors calibration (described in the next section) and characterized by a high signal-to-noise ratio of detected events.

The time response of the top and bottom LMO floors, as well as all LDs, is found to be similar. Also, we see a hint of a bit faster rise time of LMOs equipped with larger NTDs. Moreover, all operated Al-coated LMOs have two-three times faster signals than typically reported time constants of NTD-instrumented bolometers based on similar-size LMO crystals [48, 51, 61, 62, 94]. This speed-up of the time response is achieved thanks to the metal coating film, which is responsible for the faster thermalization of phonons induced by a nuclear event [54, 58].

All LDs equipped with smaller NTDs, being operated at colder working temperatures, are characterized by slightly longer rising part of signals than those of LDs instrumented with larger NTDs being strongly polarized; the LDs time constants and their dependence on working point are within our expectations [51, 61, 95].

4.2 Performance of LMO bolometers

The performance of the LMO detectors is found to be reasonably good but not excellent, due to a high microphonic noise level. In particular, for all LMO channels we observed a noise peak at ~ 11 Hz, in the middle of the signal bandwidth (~ 1 –50 Hz, taking into account the time constants of LMOs listed in table 2). The size of this disturbance was channel-dependent, and went 5–2000 $\text{nV}/\sqrt{\text{Hz}}$ for the chosen working points, as shown in figure 3. This peak is present even at room temperature when the impedance of the NTDs is negligible. The peak disappears when the pulse-tube is switched off, however the detectors can be operated in such conditions only for a very short time. Also, we measured the vibration profile at 300 K flange using an accelerometer and we found that the pulse tube main frequency at 1.4 Hz is efficiently cut by the UQT system of the cryostat, while harmonics including a prominent resonance close to 11.2 Hz are visible along the vertical and horizontal directions. It has to be emphasised that a similar noise structure is also present in the data of the previous cryogenic run [61, 96], but the ~ 11 Hz peak is found to be narrow and with the amplitude up to a few tens of $\text{nV}/\sqrt{\text{Hz}}$, which does not spoil drastically the detector performance. Thus, the difference in the noise impact between two subsequent cryoruns indicates that the suspension used for the 12-crystal array is not optimal and the mechanical decoupling system of the cryostat has to be improved.³

In order to mitigate the noise issue, the detectors were polarized with high currents (3 nA), not optimal in terms of the detector sensitivity. Consequently, the voltage signal amplitudes of LMOs

³Recently, the spring-suspended system has been replaced with the Kevlar wires connected to the three magnetic dampers installed at the still (~ 800 mK) stage; the reference detector, a 0.58 kg $^{116}\text{CdWO}_4$ scintillating bolometer, demonstrated a factor 2 improved noise of both heat and light channels compared to the best previous measurements [73] in the C2U set-up.

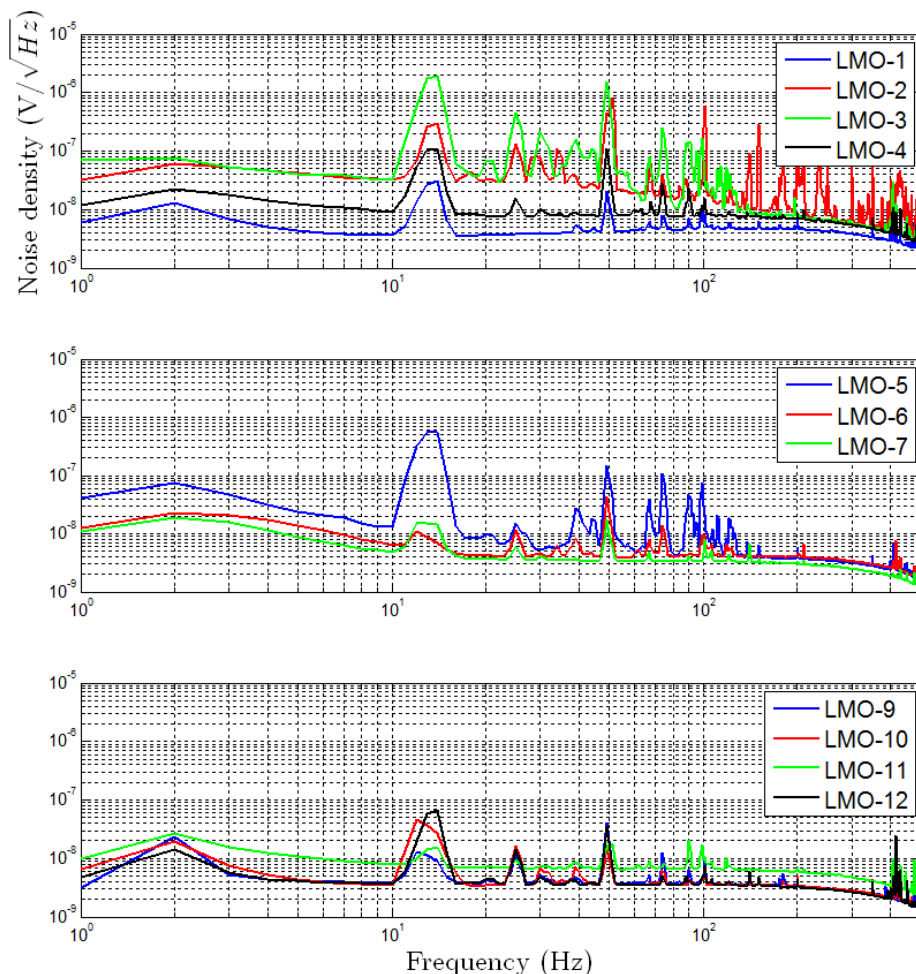


Figure 3. Noise density of LMO bolometers operated in the C2U set-up at LSC. The data exhibit a strong 11 Hz peak and other higher frequency harmonics of the main pulse tube frequency at 1.4 Hz. The 50 Hz peak and its harmonics are also present at a notable level for all channels; they are related to electrical configuration external to the set-up. The noise plateau is within the expectations accounting the contributions from the amplifier and the Johnson noise of the load resistors and NTDs. The noise above 300 Hz is reduced by the Bessel filter used in the readout chain.

($\sim 10\text{--}40$ nV/keV, see table 2) are comparatively low for the 14 mK temperature. Indeed, these results are similar to the sensitivity of LMOs in CUPID-Mo operated at 21 mK temperature [51]. It is worth noting a higher sensitivity of LMOs instrumented with larger NTDs, in correlation with the larger resistance values measured at the same applied current. Thus, we can conclude that the gain in the sensitivity for these LMOs is not due to the improved coupling between the sensor and the absorber, but is mostly an effect of the NTD resistance.

All three operational LMOs with Al-coated lateral surfaces show that substantial coverage of the detector surface with Al film leads to sensitivity reduction, as observed e.g. in the CROSS R&D program [58, 59]. We also confirm this negative effect on detector performance. The sensitivities of the three surviving Al-coated LMO detectors are reduced by more than a factor 2 on average with respect to uncoated crystals.

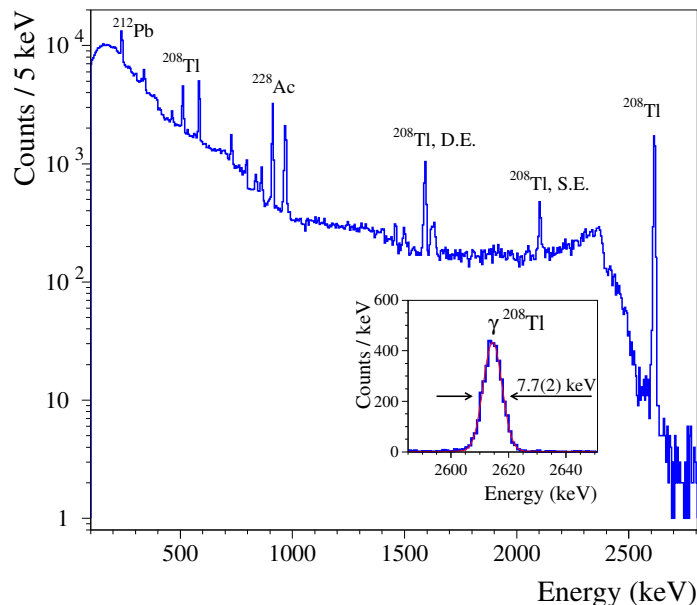


Figure 4. Energy spectrum of a ^{232}Th source measured with the 5 best-performing ^{100}Mo -enriched LMOs. The most intense γ -ray peaks observed in the spectrum are labeled (D.E. and S.E. are double and single escape peaks, respectively). A fit to the 2615 keV peak of ^{208}Tl is shown in the inset; the energy resolution is 7.7(2) keV FWHM.

The energy resolution of the baseline noise after the optimum filtering is reasonably good for all uncoated LMOs, $\sim 4\text{--}5$ keV FWHM, but two detectors characterised by tens keV FWHM noise, similar to Al-coated LMOs. Despite the noise problems, most modules of the top and bottom LMO floors exhibit a good energy resolution at high energy γ quanta (2.6 MeV), $\sim 7\text{--}8$ keV FWHM, close to the demands of ~ 5 keV FWHM for CUPID [44, 45] and CROSS [54]. Despite some difference in detectors' sensitivity, we did not observe a difference in energy resolution between LMOs instrumented with standard size NTDs and the larger ones. Also, it is interesting to note that the resolution of the 2615 keV γ peak is much better than one can expect from the baseline noise values; typically a factor 2–3 difference is reported [48, 51, 61–63]. Thus, a large part of the measured noise does not have a notable impact on the variation of the LMO thermal signal.

A good energy resolution of LMO bolometers can be seen in figure 4, where the combined calibration spectrum measured with the five best-performing ^{100}Mo -enriched LMOs is shown. In particular, the energy resolution of a 2615 keV γ peak in the combined spectrum is 7.7(2) keV FWHM. The energy resolution of well-performing LMOs is similar to the performance of the predecessor 8-crystal tower tested in the LHe-bath cryostat at LNGS [62] and of the 20-crystal array of CUPID-Mo operated at LSM in the EDELWEISS set-up [51]), which utilises both the LHe-bath and thermal machines [97].

4.3 Performance of Ge light detectors

The noise power spectra of the LDs also exhibit the 11 Hz peak with an amplitude $\sim 3\text{--}300$ nV/ $\sqrt{\text{Hz}}$, as illustrated in figure 5. The response of LDs is faster than LMOs, thus a high frequency noise up to hundred(s) Hz lies in the signal bandwidth, affecting the LD performance.

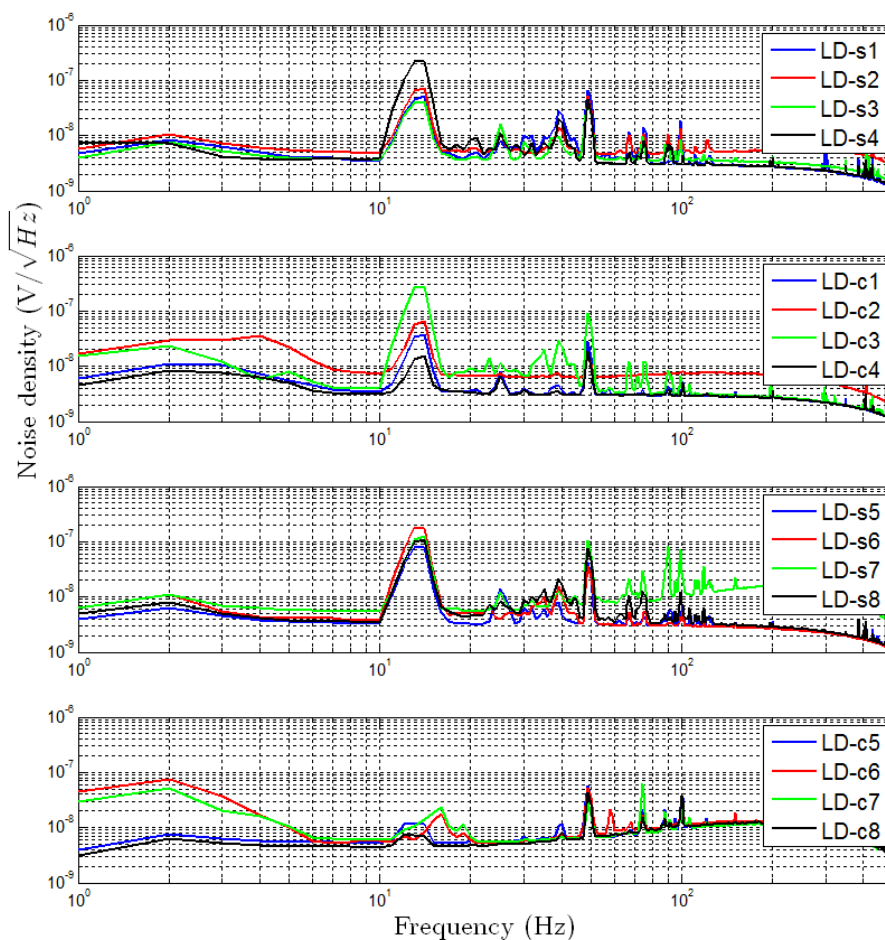


Figure 5. Noise density of bolometric Ge LDs operated in the C2U set-up at LSC. The LD noise spectra are similar to the data of LMOs (figure 3).

The least noise affected LDs are the four devices in the bottom floor of the tower. This behaviour is surprising, given that all detectors were assembled in the same way. Consequently, these four LDs exhibit the highest sensitivity in terms of the signal amplitude (2.0–2.7 $\mu\text{V}/\text{keV}$) and a very low noise level (60–90 eV FWHM), as seen in table 3. Such good performance is similar to the results of circular LDs tested in the previous cryogenic run of the C2U set-up [61, 96], with a minor impact of the 11 Hz noise.

Other LDs were operated with stronger currents across NTDs, thus their signal amplitudes are significantly reduced (mostly to 0.2–0.6 $\mu\text{V}/\text{keV}$). Using the data collected for the working points scanning with the LED system (i.e. the amplitude of the LED-induced signal as a function of the NTD current), we estimated the reduction factor to compare the LDs sensitivity at the same NTD current. We found that most LDs being polarized at 2 nA (as the bottom layer of LDs) should have sensitivities in the range of 1–3 $\mu\text{V}/\text{keV}$, i.e. similar to the best-performing LDs of the present work.

By comparing the detectors operated at similar working points we see that the circular LDs mostly outperform the squared ones in terms of the sensitivity and the baseline energy resolution; a factor of 2 difference in the noise resolution can be attributed to the difference in the LDs sensitivity.

The gain in the signal amplitude of the circular LDs can be explained by a reduced heat capacity of these devices, taking into account a factor 2–4 smaller volumes than those of the square-shaped LDs. However, we found that the noise resolution of the square-shaped LDs is slightly worse ($\sim 7\%$ in average) than expected from the drop of their sensitivity, which might indicate another sources of the noise degradation, e.g. a bit higher impact of vibrations on these devices compared to the circular LDs.

Irrespective of a large difference in the baseline noise of LDs (up to a factor of 7), the energy resolution for the Mo X-rays is found to be rather similar. We explain this effect by a position dependence of the detector response on the impact point, which is typical for small and thin absorbers [48]. The combined energy spectrum accumulated by all Ge LDs except three of them (LD-s2, LD-s4, and LD-c2 characterized by high noise and low statistics of the Mo doublet) is presented in figure 6.

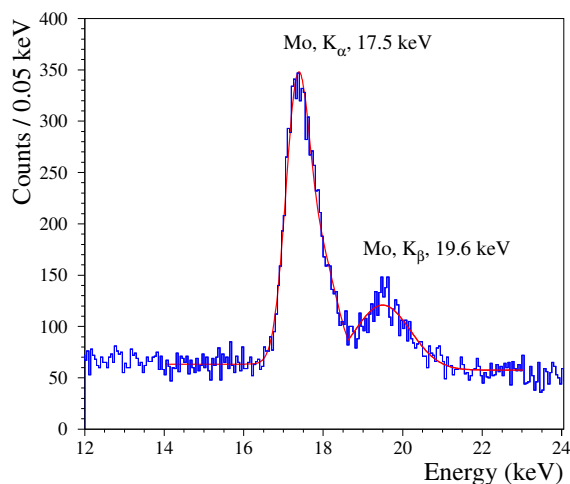


Figure 6. Energy spectrum of Mo X-rays detected by all Ge LDs (except 3, rejected due to a poor performance and low statistics of Mo X-rays) in the 266-h-long measurements with a “high-intensity” Th source. The fit to the spectrum with a linear function plus two Gaussians is shown in a solid red line; the energy resolution of the 17.5 keV X-ray peak in the combined spectrum is 0.72(2) keV FWHM.

4.4 Scintillation signal in different light collection conditions

The 12-crystal tower composition implies the study of LMO scintillation detection in different light collection conditions, depending on the presence / absence of a reflector around LMO crystal and on the active area (shape) of the LD. For the characterization of the light collection conditions we selected $\gamma(\beta)$ events with energies in the 2–3 MeV range and computed for them a light-to-heat parameter ($L/H_{\gamma(\beta)}$), defined as a ratio of a scintillation signal detected by a LD (in keV) per energy deposited as heat in LMO (in MeV). Each distribution of the $L/H_{\gamma(\beta)}$ parameter was fitted by a Gaussian function to extract a mean value. Uncertainties of the mean values returned by the Gaussian fits are very small (0.1%–1.2%) and do not include systematic effects. Therefore, we use an RMS of each $L/H_{\gamma(\beta)}$ distribution as an uncertainty estimate. Despite the fact that this approach is too conservative and largely overestimates real uncertainties,⁴ it has no impact on interpretation

⁴By comparing two datasets for LMOs with the reflective film, we see no / minor (1–2)% difference in the $L/H_{\gamma(\beta)}$ mean values for circular LDs, while the approach based on the $L/H_{\gamma(\beta)}$ width results to the uncertainty estimate on the level of (7–8)%.

Table 4. Light-to-heat energy ratio of $\gamma(\beta)$ events ($L/H_{\gamma(\beta)}$) detected by LMO scintillating bolometers in different light collection conditions, related to a) the absence/presence of a reflector and b) shapes of Ge LD (circular or square) facing LMOs.

Reflector	LMO ID	$L/H_{\gamma(\beta)}$ LD-s (keV/MeV)	$L/H_{\gamma(\beta)}$ LD-c (keV/MeV)	$L/H_{\gamma(\beta)}$ sum (keV/MeV)	$L/H_{\gamma(\beta)}$ ratio LD-s / LD-c
Absent	LMO-1	0.23(6)	0.19(4)	0.42(8)	1.3(5)
	LMO-2	0.26(8)	0.14(8)	0.40(11)	1.9(11)
	LMO-3	0.23(6)	0.18(4)	0.41(7)	1.3(4)
	LMO-4	0.33(15)	0.18(4)	0.49(16)	1.8(9)
Al-coating of LMO	LMO-5	0.16(8)	0.10(4)	0.27(9)	1.6(10)
	LMO-6	0.16(7)	0.12(6)	0.28(9)	1.3(8)
	LMO-7	0.15(4)	0.11(4)	0.26(6)	1.3(6)
Reflective film	LMO-9	0.62(8)	0.52(4)	1.14(8)	1.2(1)
	LMO-10	0.62(9)	0.52(4)	1.14(10)	1.2(2)
	LMO-11	0.59(5)	0.50(4)	1.09(6)	1.2(2)
	LMO-12	0.59(9)	0.44(3)	1.03(9)	1.3(2)

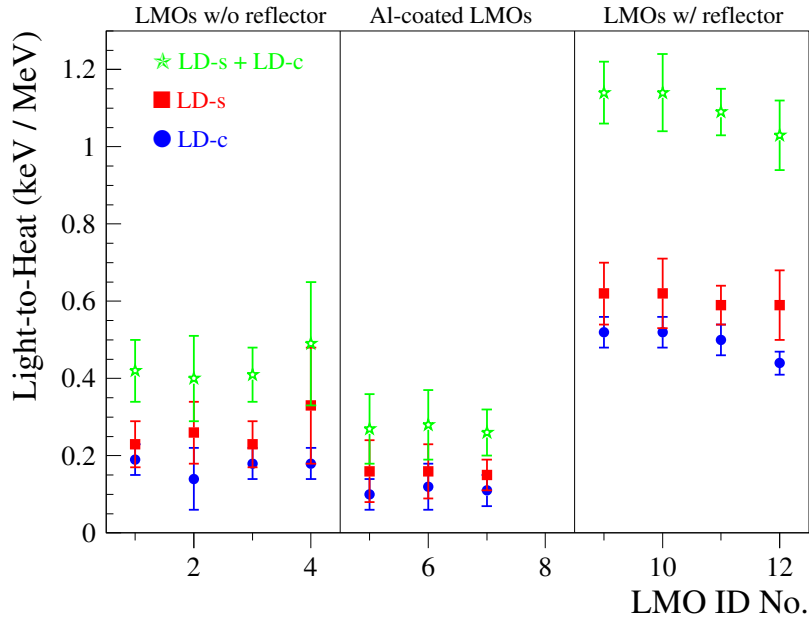


Figure 7. Light-to-heat ratio for $\gamma(\beta)$ events measured by LMO scintillating bolometers in different light collection conditions.

of results of the present study. The results on scintillation detection in different light collection condition, expressed by $L/H_{\gamma(\beta)}$, are presented in table 4 and illustrated in figure 7.

In most cases we see $\sim(20-30)\%$ higher scintillation signals detected by a squared LD compared to a circular LD faced to the same crystal. This agrees with the expectation, if we consider the 30% larger area of squared LDs. In a few cases, particularly for MTI Ge based LDs, this difference is about 80%, which may be explained by more efficient light absorption for these wafers (a similar effect is observed in CUPID-Mo [51]).

The largest scintillation signal is detected for crystals surrounded by a reflective film; the weighted average values of the $L/H_{\gamma(\beta)}$ parameters of LMOs coupled to squared and circular LDs

are 0.60(4) and 0.49(2) keV/MeV, respectively. An example of the distribution of the L/H parameter is shown in figure 8 (left). Similar light-to-heat ratios were obtained in more recent tests of cubic LMOs with the same size [61–63], and in the LUMINEU and CUPID-Mo experiments realized with cylindrical LMOs [48, 51, 53].

The absence of a reflector around LMOs drastically affects the photon collection on LDs and thus it leads to substantially reduced $L/H_{\gamma(\beta)}$ parameters of 0.24(4) and 0.18(2) keV/MeV for LMOs viewed by square and circular LDs, respectively. Such situation is illustrated in figure 8 (right). These results are similar to what was observed in the recent tests with the 8-crystal predecessor [62] and the 4-crystal prototype of the CUPID baseline detector structure [63].

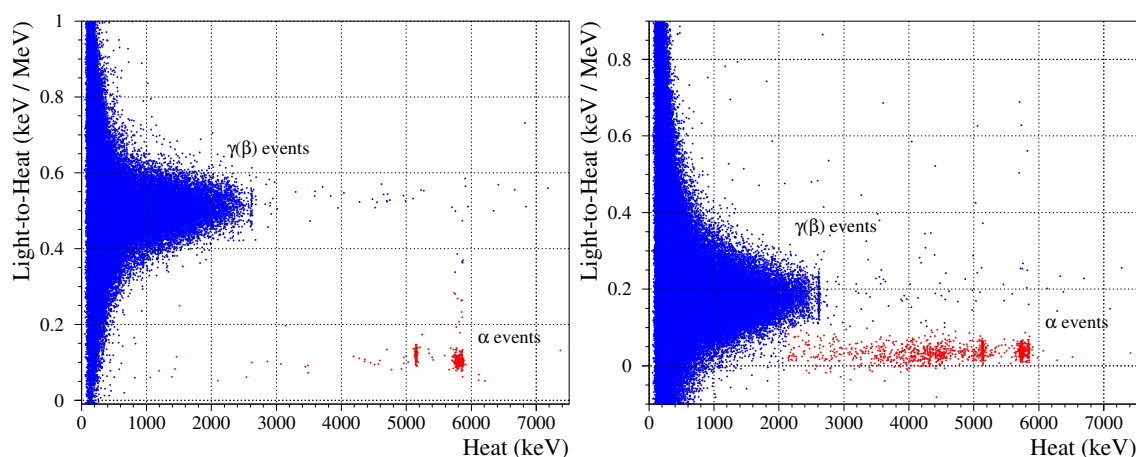


Figure 8. Distribution of the light-to-heat parameter as a function of energy for $\gamma(\beta)$ and α events detected by LMOs in different light collection conditions: with a Vikuiti™ reflective film surrounding LMO (left panel) and without a reflector around LMO (right panel). The latter LMO detector was additionally irradiated by the smeared α source (see in text). Circular LDs were utilized in both cases.

Surprisingly, the worst scintillation collection is observed for all three operational Al-coated LMO bolometers; the average $L/H_{\gamma(\beta)}$ values are 0.15(3) and 0.11(2) keV/MeV for LMOs viewed by square and circular LDs, which is almost twice lower with respect with no coating. Therefore, the present technology of Al-coated bolometers (with a large fraction of the covered surface) developed in CROSS [54, 59], does not satisfy the required performance in terms of the detector sensitivity and the light collection efficiency. We remind that this solution is in principle extremely favorable as it would have allowed surface background rejection by coincidences between nearby crystals. Thus, new investigations to test another technology of Al coating are in progress.

4.5 Radiopurity of $\text{Li}_2^{100}\text{MoO}_4$ crystal scintillators

In order to investigate radioactivity induced by U/Th contaminants in LMOs crystal bulk we used background data acquired with the five best-performing enriched LMOs (according to table 2). We selected data characterized by a long duration (> 200 h), steady temperature and noise conditions, amounting to 64 days of measurements (89 kg×d exposure) in total. The combined energy spectrum of α particles detected by the five LMO detectors is shown in figure 9.

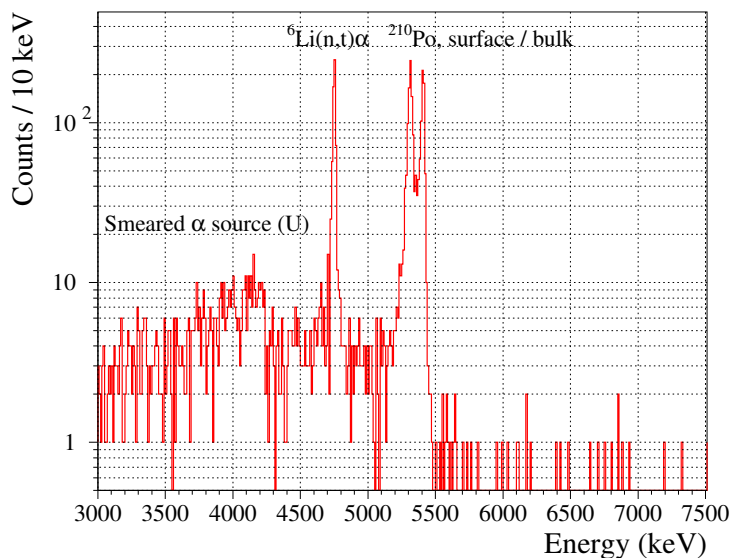


Figure 9. Energy spectrum of α events acquired by five 0.28 kg LMO bolometers over 64 days of measurements in the CROSS cryogenic facility at LSC.

Several features seen in figure 9 are common for all five detectors. The energy spectra of α particles detected by LMOs with energies below 4.7 MeV are dominated by events induced by the smeared $^{238}\text{U}/^{234}\text{U}$ α sources placed in front of the Al-coated LMOs.

A sharp peak at around 4.8 MeV is originated to the detection of products of thermal neutron captures by ^6Li , leading to the $^6\text{Li}(n,t)\alpha$ reaction. The counting rate of this peak is consistent among all detectors, and is about 1.8(2) counts/day.

A doublet peaked at 5.3 and 5.4 MeV is caused by α decays of ^{210}Po on the detector surface and crystal bulk, respectively. The 0.1 MeV difference is explained by the detection of ^{206}Pb nuclear recoils in the later case. The activity of ^{210}Po is found to be in the range of 40–150 $\mu\text{Bq/kg}$, 62 $\mu\text{Bq/kg}$ in average. A similar variation of the ^{210}Po activity is observed for LUMINEU [48, 50] and CUPID-Mo [51, 53] crystals; it is mainly originated to the ^{210}Pb contamination typical for crystal scintillators, particularly for molybdates [48, 98–100]. Note we present here a very conservative estimate of the ^{210}Po bulk activity, because it includes a possible contribution from the crystal surface ^{210}Po contamination; in order to disentangle this contribution, a more sophisticated analysis of the background model is required [101, 102].

The sensitivity to detect peaks of ^{232}Th (4.1 MeV), ^{238}U (4.3 MeV), and ^{226}Ra (4.8 MeV) is strongly affected by the α source and neutron-induced backgrounds, thus we searched for decays of ^{232}Th and ^{226}Ra α -decaying daughters with Q-values within the 5.5–7.5 MeV energy interval, in the region with a rather low counting rate of 0.43(7) counts/day/kg. In this energy range we see no clear evidence of the presence of peaks of ^{228}Th (5.5 MeV) and ^{224}Ra (5.8 MeV) from the ^{232}Th chain and/or ^{222}Rn (5.6 MeV) and ^{218}Po (6.1 MeV) from the ^{238}U family. Thus, we can set only upper limits on activities of ^{228}Th and ^{226}Ra contaminants in the bulk of enriched LMOs: below 0.7 and 1.1 $\mu\text{Bq/kg}$, respectively. Such high radiopurity of LMOs is ensured by the LUMINEU technology of crystal production from additionally purified $^{100}\text{MoO}_3$, which satisfies CROSS and CUPID demands on the ultra-low level of radioactive contaminants in high-quality LMO crystals.

5 Conclusions

We realized a 12-crystal array of LMO scintillating bolometers, accompanied by 16 Ge bolometric light detectors, to test different detector configurations for the future double-beta decay experiments CROSS and CUPID. We installed the array in the CROSS cryogenic facility at the Canfranc Underground Laboratory, cooled down to 14 mK, and operated over almost a half of year with about 80% duty cycle of data taking. Despite the sub-optimal noise conditions — significant pulse-tube induced noise, in the detector signal bandwidth, present for most of the channels — we achieved satisfactory results in terms of detector performance, which allowed us to investigate crucial parameters for the design of CROSS and CUPID detector structures (i.e. performance of detectors instrumented with different sizes of phonon sensors and in different scintillation light collection conditions).

We found no clear difference in performance of LMO bolometers equipped with NTD thermistors with a factor of 3 different volume ($3 \times 3 \times 1$ mm and $9 \times 3 \times 1$ mm), but a larger voltage signal (larger NTD resistance) and a hint on a few ms shorter rise time of LMOs instrumented with larger NTDs. On the contrary, all 3 operational LMO bolometers with four lateral surfaces being covered with an Al layer ($2.0 \mu\text{m}$ or $0.2 \mu\text{m}$ thick) show a reduced sensitivity and notably faster time response. Even if noise conditions were far from optimal, the LMO detectors are characterized by reasonably good energy resolution, in particular the resolution for the 2615 keV gamma peak of ^{208}Tl in the combined spectrum of the five best performance LMOs was measured as $7.7(2)$ keV FWHM. Radioactive contaminants from U/Th chains were investigated by analysis of alpha peaks in five enriched LMO crystals. The activities of ^{228}Th and ^{226}Ra are found to be below $1 \mu\text{Bq/kg}$, which satisfies demands of CROSS and CUPID on crystal bulk radiopurity.

Most of Ge LDs (12 over 16) were strongly affected by the pulse-tube induced noise, consequently their performance is also impacted by stronger NTD currents applied to mitigate the issue. However, neither the position in the tower nor the NTD size are expected to be responsible for the observed difference in the LD performance, while the tower suspension is more likely to be responsible for the noise issue. Indeed, the tower design is identical for three LMO floors sandwiched by four LD floors. A similar level of LD sensitivity at the same operational point (i.e. NTD current) was observed by analysis of the LDs response to light signals produced by LED. In contrast to a significant difference in the LDs noise, which varies from 0.06 to 0.46 keV FWHM, the LD energy resolution for 17.5 keV Mo X-ray peaks is found to be similar, on the level of 1 keV FWHM.

Despite the noise excess of LMOs and LDs, we were able to study the LMO scintillation detection in various light collection conditions. We observed in average (20–30)% higher photons collection with square LDs compared to circular ones. The highest light collection was observed for LMOs surrounded by a reflective film; the square and circular LDs measured an average scintillation signal of $0.60(4)$ and $0.49(2)$ keV per 1 MeV energy deposited in the LMO crystal scintillator. The absence of the reflector around LMO scintillator reduces the light collection efficiency by about a factor 2, to an average signal of $0.24(4)$ and $0.18(2)$ keV/MeV, respectively. These results are similar to values reported in recent studies with cylindrical and cubic LMO scintillating bolometers. Surprisingly, even lower scintillation signal is detected from the Al-coated LMOs, in average $0.15(3)$ and $0.11(2)$ keV/MeV for square and circular LD, respectively. Taking into account the poor bolometric and scintillation signals, the present procedure of Al coating of four lateral surfaces of LMOs cannot be adopted for CROSS and CUPID. However, some features of coated detectors, like a fast response and ability to identify surface events [58], motivate us to R&D further the coating procedures to achieve the ultimate goal.

Acknowledgments

The CROSS and CUPID Collaborations thank the directors and staff of the Laboratorio Subterráneo de Canfranc and the technical staff of our laboratories. This work was supported by the Istituto Nazionale di Fisica Nucleare (INFN); by the European Research Council (ERC) under the European Union Horizon 2020 program (H2020/2014–2020) with the ERC Advanced Grant no. 742345 (ERC-2016-ADG, project CROSS) and the Marie Skłodowska-Curie Grant Agreement No. 754496; by the Italian Ministry of University and Research (MIUR) through the grant Progetti di ricerca di Rilevante Interesse Nazionale (PRIN 2017, grant no. 2017FJZMCJ); by the US National Science Foundation under Grant Nos. NSF-PHY-1614611 and NSF-PHY-1401832; by the P2IO LabEx (ANR-10-LABX-0038) managed by the Agence Nationale de la Recherche and by the IN2P3 (project CUPID-TDR) in France. This material is also based upon work supported by the US Department of Energy (DOE) Office of Science under Contract Nos. DE-AC02-05CH11231 and DE-AC02-06CH11357; and by the DOE Office of Science, Office of Nuclear Physics under Contract Nos. DE-FG02-08ER41551, DE-SC0011091, DE-SC0012654, DE-SC0019316, DE-SC0019368, and DE-SC0020423. This work was also supported by the National Research Foundation of Ukraine under Grant No. 2020.02/0011 and by the National Academy of Sciences of Ukraine in the framework of the project “Development of bolometric experiments for the search for double beta decay”, the grant number 0121U111684.

More information on the technical details of the CUPID and CROSS experiments and the each collaboration policies can be found at the official web-pages <https://cupid-it.lngs.infn.it> and <https://a2c.ijclab.in2p3.fr/en/a2c-home-en/assd-home-en/assd-cross/>, respectively.

References

- [1] M. Agostini, G. Benato, J.A. Detwiler, J. Menéndez and F. Vissani, *Toward the discovery of matter creation with neutrinoless $\beta\beta$ decay*, *Rev. Mod. Phys.* **95** (2023) 025002 [[arXiv:2202.01787](https://arxiv.org/abs/2202.01787)].
- [2] PARTICLE DATA GROUP collaboration, *Review of Particle Physics*, *Prog. Theor. Exp. Phys.* **2022** (2022) 083C01.
- [3] M.J. Dolinski, A.W.P. Poon and W. Rodejohann, *Neutrinoless Double-Beta Decay: Status and Prospects*, *Annu. Rev. Nucl. Part. Sci.* **69** (2019) 219.
- [4] S. Dell’Oro, S. Marcocci, M. Viel and F. Vissani, *Neutrinoless double beta decay: 2015 review*, *Adv. High Energy Phys.* **2016** (2016) 2162659 [[arXiv:1601.07512](https://arxiv.org/abs/1601.07512)].
- [5] J.D. Vergados, H. Ejiri and F. Šimkovic, *Neutrinoless double beta decay and neutrino mass*, *Int. J. Mod. Phys. E* **25** (2016) 1630007 [[arXiv:1612.02924](https://arxiv.org/abs/1612.02924)].
- [6] H. Päs and W. Rodejohann, *Neutrinoless Double Beta Decay*, *New J. Phys.* **17** (2015) 115010 [[arXiv:1507.00170](https://arxiv.org/abs/1507.00170)].
- [7] J.D. Vergados, H. Ejiri and F. Simkovic, *Theory of Neutrinoless Double Beta Decay*, *Rept. Prog. Phys.* **75** (2012) 106301 [[arXiv:1205.0649](https://arxiv.org/abs/1205.0649)].
- [8] W. Rodejohann, *Neutrino-less Double Beta Decay and Particle Physics*, *Int. J. Mod. Phys. E* **20** (2011) 1833 [[arXiv:1106.1334](https://arxiv.org/abs/1106.1334)].
- [9] B. Pritychenko, *Systematic analysis of double-beta decay half lives*, *Nucl. Phys. A* **1033** (2023) 122628 [[arXiv:2303.00838](https://arxiv.org/abs/2303.00838)].

- [10] A. Barabash, *Precise Half-Life Values for Two-Neutrino Double- β Decay: 2020 Review*, *Universe* **6** (2020) 159 [[arXiv:2009.14451](#)].
- [11] P. Belli, R. Bernabei, F. Cappella, V. Caracciolo, R. Cerulli, A. Incicchitti et al., *Double Beta Decay to Excited States of Daughter Nuclei*, *Universe* **6** (2020) 239.
- [12] R. Saakyan, *Two-Neutrino Double-Beta Decay*, *Annu. Rev. Nucl. Part. Sci.* **63** (2013) 503.
- [13] J. Schechter and J.W.F. Valle, *Neutrinoless Double beta Decay in $SU(2) \times U(1)$ Theories*, *Phys. Rev. D* **25** (1982) 2951.
- [14] M. Duerr, M. Lindner and A. Merle, *On the Quantitative Impact of the Schechter-Valle Theorem*, *JHEP* **06** (2011) 091 [[arXiv:1105.0901](#)].
- [15] NEMO-3 collaboration, *Results of the search for neutrinoless double- β decay in ^{100}Mo with the NEMO-3 experiment*, *Phys. Rev. D* **92** (2015) 072011 [[arXiv:1506.05825](#)].
- [16] EXO-200 collaboration, *Search for Neutrinoless Double- β Decay with the Complete EXO-200 Dataset*, *Phys. Rev. Lett.* **123** (2019) 161802 [[arXiv:1906.02723](#)].
- [17] CUORE collaboration, *Improved Limit on Neutrinoless Double-Beta Decay in ^{130}Te with CUORE*, *Phys. Rev. Lett.* **124** (2020) 122501 [[arXiv:1912.10966](#)].
- [18] GERDA collaboration, *Final Results of GERDA on the Search for Neutrinoless Double- β Decay*, *Phys. Rev. Lett.* **125** (2020) 252502 [[arXiv:2009.06079](#)].
- [19] CUPID collaboration, *Final Result on the Neutrinoless Double Beta Decay of ^{82}Se with CUPID-0*, *Phys. Rev. Lett.* **129** (2022) 111801 [[arXiv:2206.05130](#)].
- [20] C. Augier et al., *Final results on the $0\nu\beta\beta$ decay half-life limit of ^{100}Mo from the CUPID-Mo experiment*, *Eur. Phys. J. C* **82** (2022) 1033 [[arXiv:2202.08716](#)].
- [21] MAJORANA collaboration, *Final Result of the Majorana Demonstrator's Search for Neutrinoless Double- β Decay in ^{76}Ge* , *Phys. Rev. Lett.* **130** (2023) 062501 [[arXiv:2207.07638](#)].
- [22] KAMLAND-ZEN collaboration, *Search for the Majorana Nature of Neutrinos in the Inverted Mass Ordering Region with KamLAND-Zen*, *Phys. Rev. Lett.* **130** (2023) 051801 [[arXiv:2203.02139](#)].
- [23] C. Adams et al., *Neutrinoless Double Beta Decay*, Tech.Rep. FERMILAB-CONF-22-962-ND (2022) [[arXiv:2212.11099](#)].
- [24] V. D'Andrea, N.D. Marco, M.B. Junker, M. Laubenstein, C. Macolino, M. Morella et al., *Neutrinoless Double Beta Decay with Germanium Detectors: 10^{26} yr and Beyond*, *Universe* **7** (2021) 341 [[arXiv:2109.07575](#)].
- [25] M. Biassoni and O. Cremonesi, *Search for neutrino-less double beta decay with thermal detectors*, *Prog. Part. Nucl. Phys.* **114** (2020) 103803.
- [26] I. Shimizu and M. Chen, *Double Beta Decay Experiments With Loaded Liquid Scintillator*, *Front. Phys.* **7** (2019) 33.
- [27] J.J. Gomez-Cadenas, F. Monrabal Capilla and P. Ferrario, *High Pressure Gas Xenon TPCs for Double Beta Decay Searches*, *Front. Phys.* **7** (2019) 51 [[arXiv:1903.02435](#)].
- [28] E. Fiorini and T.O. Niinikoski, *Low Temperature Calorimetry for Rare Decays*, *Nucl. Instrum. Meth. A* **224** (1984) 83.
- [29] S. Pirro, S. Capelli, M. Pavan, E. Previtali, J.W. Beeman and P. Gorla, *Scintillating double beta decay bolometers*, *Phys. Atom. Nucl.* **69** (2006) 2109 [[nucl-ex/0510074](#)].

- [30] S. Pirro and P. Mauskopf, *Advances in Bolometer Technology for Fundamental Physics*, *Annu. Rev. Nucl. Part. Sci.* **67** (2017) 161.
- [31] D. Poda and A. Giuliani, *Low background techniques in bolometers for double-beta decay search*, *Int. J. Mod. Phys. A* **32** (2017) 1743012 [[arXiv:1711.01075](#)].
- [32] F. Bellini, *Potentialities of the future technical improvements in the search of rare nuclear decays by bolometers*, *Int. J. Mod. Phys. A* **33** (2018) 1843003 [[arXiv:1802.04260](#)].
- [33] D. Poda, *Scintillation in Low-Temperature Particle Detectors*, *MDPI Phys.* **3** (2021) 473.
- [34] A. Zolotarova, *Bolometric Double Beta Decay Experiments: Review and Prospects*, *Symmetry* **13** (2021) 2255.
- [35] S.C. Kim et al., *Searching for neutrinoless double beta decay with the AMoRE experiments*, *Nuovo Cim. C* **46** (2023) 8.
- [36] C. Brofferio and S. Dell’Oro, *The saga of neutrinoless double beta decay search with TeO₂ thermal detectors*, *Rev. Sci. Instrum.* **89** (2018) 121502 [[arXiv:1801.03580](#)].
- [37] C. Enss and S. Hunklinger, *Low-Temperature Physics*, Springer-Verlag (2005), [10.1007/b137878](#).
- [38] C. Enss, ed., *Cryogenic Particle Detection*, Springer Berlin Heidelberg (2005), [10.1007/b12169](#).
- [39] C. Enss and D. McCammon, *Physical Principles of Low Temperature Detectors: Ultimate Performance Limits and Current Detector Capabilities*, *J. Low Temp. Phys.* **151** (2008) 5.
- [40] CUORE collaboration, *Search for Majorana neutrinos exploiting millikelvin cryogenics with CUORE*, *Nature* **604** (2022) 53 [[arXiv:2104.06906](#)].
- [41] CUORE collaboration, *CUORE opens the door to tonne-scale cryogenics experiments*, *Prog. Part. Nucl. Phys.* **122** (2022) 103902 [[arXiv:2108.07883](#)].
- [42] CUORE collaboration, *The projected background for the CUORE experiment*, *Eur. Phys. J. C* **77** (2017) 543 [[arXiv:1704.08970](#)].
- [43] CUORE collaboration, *CUORE sensitivity to $0\nu\beta\beta$ decay*, *Eur. Phys. J. C* **77** (2017) 532 [[arXiv:1705.10816](#)].
- [44] CUPID collaboration, *CUPID: CUORE (Cryogenic Underground Observatory for Rare Events) Upgrade with Particle Identification*, [arXiv:1504.03599](#).
- [45] CUPID collaboration, *CUPID pre-CDR*, [arXiv:1907.09376](#).
- [46] O.P. Barinova, F.A. Danevich, V.Y. Degoda, S.V. Kirsanova, V.M. Kudovbenko, S. Pirro et al., *First test of Li₂MoO₄ crystal as a cryogenic scintillating bolometer*, *Nucl. Instrum. Meth. A* **613** (2010) 54.
- [47] L. Cardani, N. Casali, S. Nagorny, L. Pattavina, G. Piperno, O.P. Barinova et al., *Development of a Li₂MoO₄ scintillating bolometer for low background physics*, *2013 JINST* **8** P10002 [[arXiv:1307.0134](#)].
- [48] E. Armengaud et al., *Development of ¹⁰⁰Mo-containing scintillating bolometers for a high-sensitivity neutrinoless double-beta decay search*, *Eur. Phys. J. C* **77** (2017) 785 [[arXiv:1704.01758](#)].
- [49] V. Grigorieva, V. Shlegel, T. Bekker, N. Ivannikova, A. Giuliani, P. de Marcillac et al., *Li₂MoO₄ crystals grown by low-thermal-gradient Czochralski technique*, *J. Mater. Sci. Eng. B* **7** (2017) 63.
- [50] LUMINEU, CUPID-0/Mo and EDELWEISS collaborations, *¹⁰⁰Mo-enriched Li₂MoO₄ scintillating bolometers for $0\nu 2\beta$ decay search: From LUMINEU to CUPID-0/Mo projects*, *AIP Conf. Proc.* **1894** (2017) 020017 [[arXiv:1709.07846](#)].

- [51] E. Armengaud et al., *The CUPID-Mo experiment for neutrinoless double-beta decay: performance and prospects*, *Eur. Phys. J. C* **80** (2020) 44 [arXiv:1909.02994].
- [52] CUPID collaboration, *First data from the CUPID-Mo neutrinoless double beta decay experiment*, *J. Phys. Conf. Ser.* **1468** (2020) 012129 [arXiv:1911.10426].
- [53] D.V. Poda et al., *Performance of the CUPID-Mo double-beta decay bolometric experiment*, talk given at the *XXIX International (online) Conference on Neutrino Physics and Astrophysics*, 22 June–2 July 2020, <https://indico.fnal.gov/event/19348/contributions/186385/>.
- [54] CROSS collaboration, *The $0\nu 2\beta$ -decay CROSS experiment: preliminary results and prospects*, *JHEP* **01** (2020) 018 [arXiv:1906.10233].
- [55] H. Khalife et al., *The CROSS Experiment: Rejecting Surface Events by PSD Induced by Superconducting Films*, *J. Low Temp. Phys.* **199** (2020) 19 [arXiv:1907.11411].
- [56] CROSS collaboration, *The CROSS experiment: rejecting surface events with PSD*, talk given at the *XXIX International (online) Conference on Neutrino Physics and Astrophysics*, 22 June–2 July 2020, <https://indico.fnal.gov/event/19348/contributions/186492/>. [arXiv:1907.11411].
- [57] CROSS collaboration, *The CROSS experiment: search for $0\nu 2\beta$ decay with surface sensitive bolometers*, *J. Phys. Conf. Ser.* **1468** (2020) 012147.
- [58] I.C. Bandac et al., *Phonon-mediated crystal detectors with metallic film coating capable of rejecting α and β events induced by surface radioactivity*, *Appl. Phys. Lett.* **118** (2021) 184105 [arXiv:2103.07181].
- [59] H. Khalife, *CROSS and CUPID-Mo: future strategies and new results in bolometric search for $0\nu\beta\beta$* , Ph.D. thesis, Université Paris-Saclay, Orsay, France (2021).
- [60] L. Bergé et al., *Purification of molybdenum, growth and characterization of medium volume ZnMoO_4 crystals for the LUMINEU program*, *2014 JINST* **9** P06004.
- [61] CUPID and CROSS collaboration, *A CUPID $\text{Li}_2^{100}\text{MoO}_4$ scintillating bolometer tested in the CROSS underground facility*, *2021 JINST* **16** P02037 [arXiv:2011.13806].
- [62] CUPID collaboration, *Characterization of cubic $\text{Li}_2^{100}\text{MoO}_4$ crystals for the CUPID experiment*, *Eur. Phys. J. C* **81** (2021) 104 [arXiv:2011.13656].
- [63] CUPID collaboration, *Optimization of the first CUPID detector module*, *Eur. Phys. J. C* **82** (2022) 810 [arXiv:2202.06279].
- [64] V. Grigorieva, V. Shlegel, Y. Borovlev, T. Bekker, A. Barabash, S. Konovalov et al., *$\text{Li}_2^{100\text{depl}}\text{MoO}_4$ crystals grown by low-thermal-gradient Czochralski technique*, *J. Cryst. Growth* **552** (2020) 125913.
- [65] *Umicore germanium substrates*, <https://eom.umicore.com/en/germanium-solutions/products/germanium-substrates/>.
- [66] *MTI Germanium substrates*, <https://www.mtixtl.com/ge.aspx>.
- [67] CUPID collaboration, *CUPID-0: the first array of enriched scintillating bolometers for $0\nu\beta\beta$ decay investigations*, *Eur. Phys. J. C* **78** (2018) 428 [arXiv:1802.06562].
- [68] M. Mancuso, J.W. Beeman, A. Giuliani, L. Dumoulin, E. Olivieri, G. Pessina et al., *An experimental study of antireflective coatings in Ge light detectors for scintillating bolometers*, *EPJ Web Conf.* **65** (2014) 04003.
- [69] V. Novati et al., *Charge-to-heat transducers exploiting the Neganov-Trofimov-Luke effect for light detection in rare-event searches*, *Nucl. Instrum. Meth. A* **940** (2019) 320 [arXiv:1906.11506].

- [70] E. Haller, *Advanced far-infrared detectors*, *Infrared Phys. Technol.* **35** (1994) 127.
- [71] E. Andreotti, C. Brofferio, L. Foggetta, A. Giuliani, B. Margesin, C. Nones et al., *Production, characterization, and selection of the heating elements for the response stabilization of the CUORE bolometers*, *Nucl. Instrum. Meth. A* **664** (2012) 161.
- [72] A. Alessandrello et al., *Methods for response stabilization in bolometers for rare decays*, *Nucl. Instrum. Meth. A* **412** (1998) 454.
- [73] D.L. Helis, *Searching for neutrinoless double-beta decay with scintillating bolometers*, Ph.D. thesis, Université Paris-Saclay, Orsay, France (2021).
- [74] CROSS collaboration, *The new CROSS Cryogenic Underground (C2U) facility: an overview*, talk given at the *XXIX International (online) Conference on Neutrino Physics and Astrophysics*, 22 June–2 July 2020, <https://indico.fnal.gov/event/19348/contributions/186315/>.
- [75] E. Olivieri, J. Billard, M. De Jesus, A. Juillard and A. Leder, *Vibrations on pulse tube based Dry Dilution Refrigerators for low noise measurements*, *Nucl. Instrum. Meth. A* **858** (2017) 73 [[arXiv:1703.08957](https://arxiv.org/abs/1703.08957)].
- [76] *The ultra-quiet technology*, <https://cryoconcept.com/product/the-ultra-quiet-technology/>.
- [77] D.L. Helis et al., *Neutrinoless Double-Beta Decay Searches with Enriched $^{116}\text{CdWO}_4$ Scintillating Bolometers*, *J. Low Temp. Phys.* **199** (2020) 467.
- [78] W.H. Trzaska et al., *Cosmic-ray muon flux at Canfranc Underground Laboratory*, *Eur. Phys. J. C* **79** (2019) 721 [[arXiv:1902.00868](https://arxiv.org/abs/1902.00868)].
- [79] J. Pérez-Pérez et al., *Radon Mitigation Applications at the Laboratorio Subterráneo de Canfranc (LSC)*, *Universe* **8** (2022) 112 [[arXiv:2112.15371](https://arxiv.org/abs/2112.15371)].
- [80] C. Arnaboldi et al., *The programmable front-end system for CUORICINO, an array of large-mass bolometers*, *IEEE Trans. Nucl. Sci.* **49** (2002) 2440.
- [81] P. Carniti, C. Gotti and G. Pessina, *High resolution digitization system for the CROSS experiment*, *J. Low Temp. Phys.* **199** (2019) 833 [[arXiv:1908.11242](https://arxiv.org/abs/1908.11242)].
- [82] P. Carniti, C. Gotti and G. Pessina, *High resolution filtering and digitization system for cryogenic bolometric detectors*, *Nucl. Instrum. Meth. A* **1045** (2023) 167658 [[arXiv:2207.06284](https://arxiv.org/abs/2207.06284)].
- [83] L. Bergé et al., *Complete event-by-event $\alpha/\gamma(\beta)$ separation in a full-size TeO_2 CUORE bolometer by Neganov-Luke-magnified light detection*, *Phys. Rev. C* **97** (2018) 032501 [[arXiv:1710.03459](https://arxiv.org/abs/1710.03459)].
- [84] LUMINEU, CUPID-0/Mo, EDELWEISS collaboration, *^{100}Mo -enriched Li_2MoO_4 scintillating bolometers for $0\nu 2\beta$ decay search: From LUMINEU to CUPID-0/Mo projects*, *AIP Conf. Proc.* **1894** (2017) 020017 [[arXiv:1709.07846](https://arxiv.org/abs/1709.07846)].
- [85] M. Mancuso, *Development and optimization of scintillating bolometers and innovative light detectors for the search for neutrinoless double beta decay*, Ph.D. thesis, Université Paris-Sud, Orsay, France (2016).
- [86] E. Gatti and P.F. Manfredi, *Processing the Signals From Solid State Detectors in Elementary Particle Physics*, *Riv. Nuovo Cim.* **9N1** (1986) 1.
- [87] G. Piperno, S. Pirro and M. Vignati, *Optimizing the energy threshold of light detectors coupled to luminescent bolometers*, *2011 JINST* **6** P10005 [[arXiv:1107.5679](https://arxiv.org/abs/1107.5679)].
- [88] I.C. Bandac, A.S. Barabash, L. Bergé, Y.A. Borovlev, J.M. Calvo-Mozota, P. Carniti et al., *$\text{Li}_2^{100\text{depl}}\text{MoO}_4$ Scintillating Bolometers for Rare-Event Search Experiments*, *Sensors* **23** (2023) 5465.

- [89] D.M. Chernyak, F.A. Danevich, A. Giuliani, E. Olivieri, M. Tenconi and V.I. Tretyak, *Random coincidence of $2\nu 2\beta$ decay events as a background source in bolometric $0\nu 2\beta$ decay experiments*, *Eur. Phys. J. C* **72** (2012) 1989 [[arXiv:1301.4248](#)].
- [90] D.M. Chernyak, F.A. Danevich, A. Giuliani, M. Mancuso, C. Nones, E. Olivieri et al., *Rejection of randomly coinciding events in ZnMoO_4 scintillating bolometers*, *Eur. Phys. J. C* **74** (2014) 2913 [[arXiv:1404.1231](#)].
- [91] D.M. Chernyak et al., *Rejection of randomly coinciding events in $\text{Li}_2^{100}\text{MoO}_4$ scintillating bolometers using light detectors based on the Neganov-Luke effect*, *Eur. Phys. J. C* **77** (2017) 3 [[arXiv:1606.02287](#)].
- [92] CUPID collaboration, *Novel technique for the study of pileup events in cryogenic bolometers*, *Phys. Rev. C* **104** (2021) 015501 [[arXiv:2011.11726](#)].
- [93] A. Ahmine et al., *Enhanced light signal for the suppression of pile-up events in Mo-based bolometers for the $0\nu\beta\beta$ decay search.*, *Eur. Phys. J. C* **83** (2023) 373 [[arXiv:2302.13944](#)].
- [94] T.B. Bekker et al., *Aboveground test of an advanced Li_2MoO_4 scintillating bolometer to search for neutrinoless double beta decay of ^{100}Mo* , *Astropart. Phys.* **72** (2016) 38 [[arXiv:1410.6933](#)].
- [95] J.W. Beeman et al., *Characterization of bolometric Light Detectors for rare event searches*, *2013 JINST* **8** P07021 [[arXiv:1304.6289](#)].
- [96] CROSS collaboration, *First results of CROSS underground measurements with massive bolometers*, talk given at the *XXIX International (online) Conference on Neutrino Physics and Astrophysics*, 22 June–2 July 2020, <https://indico.fnal.gov/event/19348/contributions/186216/>.
- [97] EDELWEISS collaboration, *Performance of the EDELWEISS-III experiment for direct dark matter searches*, *2017 JINST* **12** P08010 [[arXiv:1706.01070](#)].
- [98] LUMINEU and EDELWEISS collaborations, *Development and underground test of radiopure ZnMoO_4 scintillating bolometers for the LUMINEU $0\nu 2\beta$ project*, *2015 JINST* **10** P05007.
- [99] F.A. Danevich, *Radiopure tungstate and molybdate crystal scintillators for double beta decay experiments*, *Int. J. Mod. Phys. A* **32** (2017) 1743008 [[arXiv:1708.09307](#)].
- [100] F.A. Danevich and V.I. Tretyak, *Radioactive contamination of scintillators*, *Int. J. Mod. Phys. A* **33** (2018) 1843007 [[arXiv:1804.00653](#)].
- [101] CUPID collaboration, *Background Model of the CUPID-0 Experiment*, *Eur. Phys. J. C* **79** (2019) 583 [[arXiv:1904.10397](#)].
- [102] CUPID-Mo collaboration, *The background model of the CUPID-Mo $0\nu\beta\beta$ experiment*, submitted to *Eur. Phys. J. C* (2023) [arXiv:2305.01402](#)

The CUPID and CROSS collaborations

K. Alfonso^a, A. Armatol^b, C. Augier^c, F.T. Avignone III^d, O. Azzolini^e, M. Balata^f, I.C. Bandac^g, A.S. Barabash^h, G. Bariⁱ, A. Barresi^{j,k}, D. Baudin^b, F. Bellini^{l,m}, G. Benato^f, V. Berest^b, M. Berettaⁿ, M. Bettelli^o, M. Biassoni^j, J. Billard^c, V. Boldrini^{i,o}, A. Branca^{j,k}, C. Brofferio^{j,k}, C. Bucci^f, J.M. Calvo-Mozota^{g,p}, J. Camilleri^a, A. Campani^{q,r}, C. Capelli^s, S. Capelli^{j,k}, L. Cappelli^f, L. Cardani^l, P. Carniti^{j,k}, N. Casali^l, E. Celi^{f,t}, C. Chang^u, D. Chiesa^{j,k}, M. Clemenza^j, I. Colantoni^{l,v}, S. Copello^{q,r}, E. Craft^w, O. Cremonesi^j, R.J. Creswick^d, A. Cruciani^l, A. D’Addabbo^f, G. D’Imperio^l, S. Dabagov^x, I. Dafinei^l, F.A. Danevich^{y,z}, M. De Jesus^c, P. de Marcillac^{aa}, S. Dell’Oro^{j,k}, S. Di Domizio^{q,r}, S. Di Lorenzo^f, T. Dixon^{aa}, V. Dompé^{l,m}, A. Drobizhev^s, L. Dumoulin^{aa}, G. Fantini^{l,m}, M. Faverezani^{j,k}, E. Ferri^j, F. Ferri^b, F. Ferroni^{ab,t}, E. Figueroa-Feliciano^{ac}, L. Foggetta^x, J. Formaggio^{ad}, A. Franceschi^x, C. Fu^{ae}, S. Fu^{ae,f}, B.K. Fujikawa^s, A. Gallas^{aa}, J. Gascon^c, S. Ghislandi^{f,t}, A. Giachero^{j,k}, A. Gianvecchio^{j,k}, M. Girola^{j,k}, L. Gironi^{j,k}, A. Giuliani^{aa}, P. Gorla^f, C. Gotti^j, C. Grant^{af}, P. Gras^b, P.V. Guillaumon^f, T.D. Gutierrez^{ag}, K. Han^{ah}, E.V. Hansenⁿ, K.M. Heeger^w, D.L. Helis^{f,t}, H.Z. Huang^{ai,ae}, A. Ianni^f, L. Imbert^{aa}, J. Johnston^{ad}, A. Juillard^c, G. Karapetrov^{aj}, G. Keppel^e, H. Khalife^b, V.V. Kobychew^y, Yu.G. Kolomensky^{n,s}, S.I. Konovalov^h, R. Kowalski^{ak}, T. Langford^w, M. Lefevre^b, R. Liu^w, Y. Liu^{al}, P. Loaiza^{aa}, L. Ma^{ae}, M. Madhukuttan^{aa}, F. Mancarella^{i,o}, C.A. Marrache-Kikuchi^{aa}, L. Marini^{f,t}, S. Marnieros^{aa}, M. Martinez^{am,an}, R.H. Maruyama^w, Ph. Mas^b, D. Mayer^{ad}, G. Mazzitelli^x, Y. Mei^s, S. Milana^l, S. Morganti^l, T. Napolitano^x, M. Nastasi^{j,k}, J. Nikkel^w, S. Nisi^f, C. Nones^b, E.B. Normanⁿ, V. Novosad^u, I. Nutini^{j,k}, T. O’Donnell^a, E. Olivieri^{aa}, M. Olmi^f, J.L. Ouellet^{ad}, S. Pagan^w, C. Pagliarone^f, L. Pagnanini^{f,t}, L. Pattavina^f, M. Pavan^{j,k}, H. Peng^{ao}, G. Pessina^j, V. Pettinacci^l, C. Pira^e, S. Pirro^f, D.V. Poda^{aa}, O.G. Polischuk^{y,l}, I. Ponce^w, S. Pozzi^{j,k}, E. Previtali^{j,k}, A. Puiu^{f,t}, S. Quitadamo^{t,f}, A. Ressa^{l,m}, R. Rizzoli^{o,i}, C. Rosenfeld^d, P. Rosier^{aa}, J.A. Scarpaci^{aa}, B. Schmidt^b, V. Sharma^a, V.N. Shlegel^{ap}, V. Singhⁿ, M. Sisti^j, P. Slocum^w, D. Speller^{ak}, P.T. Surukuchi^w, L. Taffarello^{aa}, C. Tomei^l, J.A. Torres^w, V.I. Tretyak^{y,f}, A. Tsymbaliuk^e, M. Velazquez^{ar}, K.J. Vetterⁿ, S.L. Wagaarachchiⁿ, G. Wang^u, L. Wang^{al}, R. Wang^{ak}, B. Welliver^{n,s}, J. Wilson^d, K. Wilson^d, L.A. Winslow^{ad}, M. Xue^{ao}, L. Yan^{ae}, J. Yang^{ao}, V. Yefremenko^u, V.I. Umatov^h, M.M. Zarytskyy^y, J. Zhang^u, A. Zolotarova^b, S. Zucchelli^{i,as}

^a Virginia Polytechnic Institute and State University, Blacksburg, VA, U.S.A.

^b IRFU, CEA, Université Paris-Saclay, Saclay, France

^c Univ Lyon, Université Lyon 1, CNRS/IN2P3, IP2I-Lyon, Villeurbanne, France

^d University of South Carolina, Columbia, SC, U.S.A.

^e INFN Laboratori Nazionali di Legnaro, Legnaro, Italy

^f INFN Laboratori Nazionali del Gran Sasso, Assergi, AQ, Italy

^g Laboratorio Subterráneo de Canfranc, Canfranc-Estación, Spain

^h National Research Center Kurchatov Institute, Kurchatov Complex of Theoretical and Experimental Physics, Moscow, Russia

ⁱ INFN Sezione di Bologna, Bologna, Italy

^j INFN Sezione di Milano-Bicocca, Milan, Italy

^k University of Milano-Bicocca, Milan, Italy

^l INFN Sezione di Roma, Rome, Italy

^m Sapienza University of Rome, Rome, Italy

ⁿ University of California, Berkeley, CA, U.S.A.

^o CNR-Institute for Microelectronics and Microsystems, Bologna, Italy

^p Escuela Superior de Ingeniería y Tecnología, Universidad Internacional de La Rioja, Logroño, Spain

^q INFN Sezione di Genova, Genoa, Italy

^r University of Genova, Genoa, Italy

- ^s Lawrence Berkeley National Laboratory, Berkeley, CA, U.S.A.
^t Gran Sasso Science Institute, L'Aquila, Italy
^u Argonne National Laboratory, Argonne, IL, U.S.A.
^v CNR-Institute of Nanotechnology, Rome, Italy
^w Yale University, New Haven, CT, U.S.A.
^x INFN Laboratori Nazionali di Frascati, Frascati, Italy
^y Institute for Nuclear Research of NASU, Kyiv, Ukraine
^z INFN Sezione di Roma Tor Vergata, Rome, Italy
^{aa} Université Paris-Saclay, CNRS/IN2P3, IJCLab, Orsay, France
^{ab} INFN Sezione di Roma and Sapienza University of Rome, Rome, Italy
^{ac} Northwestern University, Evanston, IL, U.S.A.
^{ad} Massachusetts Institute of Technology, Cambridge, MA, U.S.A.
^{ae} Fudan University, Shanghai, China
^{af} Boston University, Boston, MA, U.S.A.
^{ag} California Polytechnic State University, San Luis Obispo, CA, U.S.A.
^{ah} Shanghai Jiao Tong University, Shanghai, China
^{ai} University of California, Los Angeles, CA, U.S.A.
^{aj} Drexel University, Philadelphia, PA, U.S.A.
^{ak} Johns Hopkins University, Baltimore, MD, U.S.A.
^{al} Beijing Normal University, Beijing, China
^{am} Centro de Astropartículas y Física de Altas Energías, Universidad de Zaragoza, Zaragoza, Spain
^{an} ARAID Fundación Agencia Aragonesa para la Investigación y el Desarrollo, Zaragoza, Spain
^{ao} University of Science and Technology of China, Hefei, China
^{ap} Nikolaev Institute of Inorganic Chemistry, Novosibirsk, Russia
^{aq} INFN Sezione di Padova, Padua, Italy
^{ar} Université Grenoble Alpes, CNRS, Grenoble INP (Institute of Engineering Université Grenoble Alpes), SIMAP, Grenoble, France
^{as} University of Bologna, Bologna, Italy