

RESEARCH

Open Access



Frequency and predictors of headache in the first 12 months after traumatic brain injury: results from CENTER-TBI

Emilie Isager Howe^{1,2*†}, Nada Andelic^{1,2†}, Cathrine Brunborg^{3†}, Marina Zeldovich⁴, Eirik Helseth^{5,6}, Toril Skandsen^{7,8,9}, Alexander Olsen^{10,8,9}, Silje C. R. Fure¹, Alice Theadom¹¹, Katrin Rauen^{12,13,14}, Benedikte Å. Madsen^{1,5}, Bram Jacobs¹⁵, Joukje van der Naalt¹⁵, Maria Carmela Tartaglia^{16,17,18}, Cathrine Elisabeth Einarsen^{7,8}, Gøril Storvig^{10,8,9}, Erling Tronvik^{19,9}, Cathrine Tverdal⁶, Nicole von Steinbüchel⁴, Cecilie Røe^{1,2,5}, Torgeir Hellstrøm^{1†} and CENTER-TBI Participants and Investigators

Abstract

Background Headache is a prevalent and debilitating symptom following traumatic brain injury (TBI). Large-scale, prospective cohort studies are needed to establish long-term headache prevalence and associated factors after TBI. This study aimed to assess the frequency and severity of headache after TBI and determine whether sociodemographic factors, injury severity characteristics, and pre- and post-injury comorbidities predicted changes in headache frequency and severity during the first 12 months after injury.

Methods A large patient sample from the Collaborative European NeuroTrauma Effectiveness Research in Traumatic Brain Injury (CENTER-TBI) prospective observational cohort study was used. Patients were stratified based on their clinical care pathway: admitted to an emergency room (ER), a ward (ADM) or an intensive care unit (ICU) in the acute phase. Headache was assessed using a single item from the Rivermead Post-Concussion Symptoms Questionnaire measured at baseline, 3, 6 and 12 months after injury. Mixed-effect logistic regression analyses were applied to investigate changes in headache frequency and associated predictors.

Results A total of 2,291 patients responded to the headache item at baseline. At study enrolment, 59.3% of patients reported acute headache, with similar frequencies across all strata. Female patients and those aged up to 40 years reported a higher frequency of headache at baseline compared to males and older adults. The frequency of severe headache was highest in patients admitted to the ICU. The frequency of headache in the ER stratum decreased substantially from baseline to 3 months and remained from 3 to 6 months. Similar trajectory trends were observed in the ICU and ADM strata across 12 months. Younger age, more severe TBI, fatigue, neck pain and vision problems were among the predictors of more severe headache over time. More than 25% of patients experienced headache at 12 months after injury.

[†]Emilie Isager Howe, Nada Andelic, Cathrine Brunborg and Torgeir Hellstrøm contributed equally to this work.

*Correspondence:

Emilie Isager Howe
emilie.howe@medisin.uio.no

Full list of author information is available at the end of the article



© The Author(s) 2024. **Open Access** This article is licensed under a Creative Commons Attribution 4.0 International License, which permits use, sharing, adaptation, distribution and reproduction in any medium or format, as long as you give appropriate credit to the original author(s) and the source, provide a link to the Creative Commons licence, and indicate if changes were made. The images or other third party material in this article are included in the article's Creative Commons licence, unless indicated otherwise in a credit line to the material. If material is not included in the article's Creative Commons licence and your intended use is not permitted by statutory regulation or exceeds the permitted use, you will need to obtain permission directly from the copyright holder. To view a copy of this licence, visit <http://creativecommons.org/licenses/by/4.0/>. The Creative Commons Public Domain Dedication waiver (<http://creativecommons.org/publicdomain/zero/1.0/>) applies to the data made available in this article, unless otherwise stated in a credit line to the data.

Conclusions Headache is a common symptom after TBI, especially in female and younger patients. It typically decreases in the first 3 months before stabilising. However, more than a quarter of patients still experienced headache at 12 months after injury. Translational research is needed to advance the clinical decision-making process and improve targeted medical treatment for headache.

Trial registration ClinicalTrials.gov NCT02210221.

Keywords Post-traumatic headache, Brain trauma, Observational study, Secondary headache disorders

Background

Posttraumatic headache (PTH) is a common symptom after traumatic brain injury (TBI) [1]. It is classified as a secondary headache, which develops within 7 days after trauma, regaining consciousness, or recovering the ability to sense and report pain [2]. The duration of PTH determines whether it is acute (less than 3 months) or persistent (more than 3 months) [2].

The reported prevalence of headache in the first year following TBI varies from 10 to 95%, depending on the severity of trauma, type of pain and other factors [3–6]. Applying a cutoff score of ≥ 2 (mild, moderate or severe problem) on the Rivermead Post-Concussion Symptoms Questionnaire (RPQ), 37.5% of patients with mild TBI reported headache at 6 months and almost 30% at 12 months [6]. Another prospective study estimated that 54% to 69% of patients with mild TBI experienced headache within the first year [3]. Several studies suggest that PTH is more frequent after mild TBI compared to moderate or severe TBI [7–9], while others show no association between injury severity and PTH [5, 10].

Although PTH tends to improve over time [6, 10–13], many patients still experience chronic headache regardless of TBI severity [14, 15, 9].

Conflicting evidence exists regarding the association between sex, age and PTH [3, 5, 16, 17]. In a prospective observational study of risk factors for PTH after mild TBI, female sex, younger age, presence of headache at the emergency department, and computed tomography (CT) abnormalities were significant risk factors for developing chronic PTH [16]. Studies on moderate to severe TBI cohorts [5] and all TBI severities [14] identified female sex as predicting persistent headache. Several studies have shown an association between PTH and mood disorders [10, 18–20]. Additionally, a migraine-like headache phenotype is common in patients affected by persistent PTH [21]. Moreover, a pre-injury history of migraine has been found to predict PTH [6, 19] and has been associated with its frequency, severity, and impact on activities of daily living following moderate and severe TBI [14].

Many headache types are associated with visual problems [22]. The visual system is likely to be directly affected along with the headache, or by the headache,

or may even be part of its triggering mechanism [22]. Therefore, considering visual disturbances as a potential predictor of PTH seems reasonable. Concurrent damage to musculoskeletal structures, especially the head and neck, might result in tension-type headache. The presence of comorbid and concurrent neck pain with migraine has been shown to be a significant predictor of disability and physical limitations, associated with increased headache frequency, intensity and duration [23–26].

Considering the inconsistent findings in the literature, large-scale, prospective longitudinal studies on PTH across acute clinical care pathways and injury severities are necessary. These studies will provide critical knowledge for identifying factors that can cause and prolong PTH, which is crucial for improving intervention and targeted treatment for individuals experiencing PTH [27].

We used a large patient sample from the Collaborative European NeuroTrauma Effectiveness Research in Traumatic Brain Injury (CENTER-TBI) observational study. Patients were stratified according to clinical care pathway: admitted to an emergency room (ER), a ward (ADM) or an intensive care unit (ICU) in the acute phase [28]. Headache was assessed using a single item from the RPQ because this seems to provide a good estimate of the subjective experience of headache after TBI. In this study, we use the term “headache” rather than PTH as we did not use the International Classification of Headache Disorders (ICHD-3) headache classification [2]. The study aims were to:

1. Assess the frequency and severity of headache after TBI at baseline (i.e. time of study inclusion), as well as 3, 6 and 12 months after injury across age, sex, injury severity and clinical pathway.
2. Explore whether sociodemographic factors, injury severity characteristics, and pre- and post-injury comorbidities predicted changes in headache frequency and severity in the first 12 months after TBI.

We hypothesised that headache would be a significant burden for most patients after TBI, regardless of injury severity and time since injury.

Methods

Study design

Data were included from participants in the core study of the CENTER-TBI project, an observational, longitudinal cohort study of patients with all severities of TBI. The participants presented to 65 centres across Europe and Israel between December 19, 2014, and December 17, 2017. The included patients had a clinical diagnosis of TBI and an indication for CT scanning, presented to a study centre within 24h after injury, and provided informed consent according to local and national ethical and legal requirements. The exclusion criterion was having a severe pre-existing neurological disorder that could bias functional outcome assessments. Patients were differentiated prospectively into three strata according to the clinical care pathway: ER stratum (patients assessed in the ER and then discharged), ADM stratum (patients admitted to a hospital ward) and ICU stratum (patients who were primarily admitted to the ICU). The study protocol has been published elsewhere [28]. The trial was registered at ClinicalTrials.gov on August 6, 2014 (#NCT02210221). The STROBE checklist was used to report this study (see Additional file 7).

Participants

The CENTER-TBI core study included 4,509 patients. This study analysed data from all patients in the ER, ADM and ICU strata who responded to the RPQ item measuring headache at least once, either at baseline (mean 2.5 days after admission to CENTER-TBI) or 3, 6 or 12 months after injury. In total, 2,291 patients (50.8% of patients in the core study) were included in this study (see Table 1 for baseline characteristics). Of these, 2,291 responded to the RPQ headache item at baseline, 2,162 at 3 months, 2,253 at 6 months and 1,450 at 12 months.

Ethical approval

This study was approved by the CENTER-TBI management committee. The CENTER-TBI study (EC grant 602,150) was conducted following all relevant European Union laws and all relevant laws of the country in which the recruiting sites were located. The informed consent of the patients, their legal representative or next of kin was obtained according to the local legislation for all patients recruited in the core dataset of CENTER-TBI and documented in the electronic case report form. For the full list of sites and ethical committees, see the official CENTER-TBI website (<https://www.center-tbi.eu/project/ethical-approval>).

Measurements

Independent variables

Sociodemographics: age, sex and education were collected at study admission. Injury severity characteristics were also recorded: patient stratum; injury mechanism; *Glasgow Coma Scale* (GCS) score within the first 24h after injury [29]; presence of intracranial injuries on first CT head scan; Brain Injury Score using the *Abbreviated Injury Scale* (Brain injury AIS; score ≥ 3 considered severe injury) [30], and *Injury Severity Score* (ISS), where a score of > 15 was considered major overall trauma [31], in addition to injuries to the face (ISS Face).

Pre- and post-injury comorbidities: Pre-injury somatic comorbidities were classified according to the *American Society of Anesthesiologists Physical Status Classification System* score (ASA-PS) [32]. Premorbid psychiatric problems comprised anxiety, depression, sleep disorders, schizophrenia, drug abuse or other psychiatric problems as reported by patients retrospectively at follow-up. Information on pre-injury migraine treatment or family history of migraine was also collected retrospectively using questionnaires at the study enrolment.

Three additional items from the RPQ were used to assess fatigue, sleep disturbance and feeling depressed at baseline, applied as determinants of post-injury comorbidities potentially relevant to headache. A cutoff score of ≥ 2 (mild, moderate or severe problem) was used. Neck pain, vision problems and problems with mobility were reported retrospectively 3 months after injury on a questionnaire specifically designed for data collection in the CENTER-TBI study. All outcome instruments used in the CENTER-TBI study can be found on the official website (<https://www.center-tbi.eu/project/validated-translations-outcome-instruments>).

Outcome variable

Headache was measured at baseline and 3, 6 and 12 months of follow-up using a single item from the RPQ, measured on a 5-point scale (0 = not a problem, 1 = no more of a problem than before, 2 = mild problem, 3 = moderate problem, 4 = severe problem) [33]. Cutoff values of ≥ 2 , corresponding to a mild, moderate or severe problem, in addition to ≥ 3 , corresponding to moderate or severe symptoms, were applied. Responses rated as 1 were recoded as 0 according to the originally proposed scoring of the RPQ. The first assessment of headache was performed at study admission, a mean of 2.5 (standard deviation [SD] 1.2) days after the onset. Both adults (age ≥ 16 years) and children or their parents (age < 16 years) were asked to rate the severity of headache compared to their pre-injury status during the last 7 days. The RPQ is a reliable measure of symptoms commonly

Table 1 Sociodemographic and clinical characteristics of the study population at baseline

Characteristic	Total (N = 2,291)	ER (n = 746)	ADM (n = 1,146)	ICU (n = 399)	p-value
Sex, male %	1,454 (63.5%)	417 (55.9%)	741 (64.7%)	296 (74.2%)	< 0.001
Age, years					< 0.001
Mean (SD)	48.8 (21.1)	47.3 (20.6)	50.8 (21.5)	45.8 (20.4)	
Median (IQR)	50 (30, 66)	46 (29, 64)	53 (33, 68)	46 (30, 62)	
Age category, %					< 0.001
0–18 years	166 (7.3%)	39 (5.2%)	86 (7.5%)	41 (10.4%)	
19–40 years	693 (30.2%)	269 (36.1%)	297 (25.9%)	127 (31.8%)	
41–65 years	849 (37.1%)	269 (36.1%)	427 (37.3%)	153 (38.3%)	
> 65 years	583 (25.4%)	169 (22.6%)	336 (29.3%)	78 (19.5%)	
Education, years					0.399
Mean (SD)	13.3 (4.3)	13.1 (4.0)	13.4 (4.4)	13.3 (4.8)	
Median (IQR)	13 (11, 16)	13 (10, 16)	13 (11, 16)	13 (11, 16)	
Pre-injury ASA-PS, %					< 0.001
Healthy	1,342 (58.9%)	428 (57.5%)	641 (56.3%)	273 (68.8%)	
Mild disease	720 (31.6%)	240 (32.2%)	385 (33.9%)	95 (23.9%)	
Severe disease	217 (9.5%)	77 (10.3%)	111 (9.8%)	29 (7.3%)	
Pre-injury psychiatric problems, %	(n = 2199)	(n = 707)	(n = 1107)	(n = 385)	0.025
	279 (12.7%)	107 (15.1%)	135 (12.2%)	37 (9.6%)	
Previous TBI, %	(n = 2,232)	(n = 726)	(n = 1118)	(n = 388)	0.001
	259 (11.6%)	107 (14.7%)	123 (11.0%)	29 (7.5%)	
Pre-injury migraine treatment, %	(n = 1,231)	(n = 375)	(n = 612)	(n = 244)	0.403
	134 (10.9%)	45 (12.0%)	68 (11.1%)	21 (8.6%)	
Cause of injury, %					< 0.001
Incidental fall	1,118 (50.9%)	363 (50.1%)	576 (52.3%)	179 (48.0%)	
Traffic accident	768 (34.9%)	241 (33.3%)	373 (33.9%)	154 (41.2%)	
Others	312 (14.2%)	120 (16.6%)	152 (13.8%)	40 (10.8%)	
GCS category, %					< 0.001
GCS 13–15	2,099 (93.3%)	735 (99.6%)	1,101 (98.0%)	263 (67.6%)	
GCS 9–12	64 (2.8%)	2 (0.3%)	18 (1.6%)	44 (11.3%)	
GCS 3–8	87 (3.9%)	1 (0.1%)	4 (0.4%)	82 (21.1%)	
Brain Injury AIS (≥ 3), %	(n = 2283)	(n = 746)	(n = 1140)	(n = 397)	< 0.001
	1,204 (52.7%)	62 (8.3%)	797 (69.9%)	345 (86.9%)	
ISS, median (IQR)	9 (2, 16)	4 (2, 8)	10 (9, 16)	24 (16, 33)	< 0.001
ISS face injury, yes, %	562 (24.5%)	161 (21.6%)	284 (24.8%)	117 (29.3)	0.014
CT head: presence of intracranial injury, %	(n = 2182)	(n = 701)	(n = 1101)	(n = 380)	< 0.001
	694 (31.8%)	67 (9.6%)	375 (34.1%)	252 (66.3%)	
RPQ, feeling depressed (≥ 2), %	(n = 2285)	(n = 745)	(n = 1142)	(n = 398)	0.027
	425 (18.6%)	130 (17.4%)	202 (17.7%)	93 (23.4%)	
RPQ, sleep problems (≥ 2), %	(n = 2258)	(n = 727)	(n = 1133)	(n = 398)	< 0.001
	620 (27.5%)	127 (17.5%)	344 (30.4%)	149 (37.4%)	
RPQ, fatigue (> 2), %	(n = 2286)	(n = 745)	(n = 1142)	(n = 399)	< 0.001
	1,071 (46.9%)	291 (39.1%)	550 (48.2%)	230 (57.6%)	
Vision problems*, %	(n = 2110)	(n = 465)	(n = 816)	(n = 829)	0.002
	487 (23.1%)	93 (20.0%)	169 (20.7%)	225 (27.1%)	
Neck pain*, %	(n = 2110)	(n = 466)	(n = 815)	(n = 829)	0.415
	684 (32.4%)	142 (30.5%)	273 (33.5%)	269 (32.4%)	
Mobility problems*, %	(n = 2113)	(n = 466)	(n = 816)	(n = 831)	< 0.001
	577 (27.3%)	72 (15.5%)	198 (24.4%)	307 (36.9%)	

*Values not available at baseline and represent 3-month follow-up

Abbreviations: ER Emergency room stratum, ADM Admission stratum (hospital ward), ICU Intensive care unit stratum, ASA-PS American Society of Anesthesiologists Physical Status Classification System score, GCS Glasgow Coma Scale, AIS Abbreviated Injury Scale, ISS Injury Severity Score, CT Computed tomography, RPQ The Rivermead Post-Concussion Symptoms Questionnaire

experienced after TBI [33, 34], and a study assessing the validity of the RPQ showed that the questionnaire was unbiased for an age range of 6–96 years [35], and parent ratings of fatigue in children with TBI have been applied in previous research [36]. If the participants reported headache at the follow-ups, it was considered persistent headache. The data were collected in face-to-face interviews or by postal or electronic questionnaires.

Statistical analyses

The CENTER-TBI dataset version 2.0 (from May 2019) was analysed in this study. For descriptive statistics, means with SDs, medians with interquartile ranges (IQRs), or percentages are presented. Differences in demographic and injury-related data between patient strata (ER, ADM and ICU) were tested using a one-way analysis of variance for normally distributed continuous variables or Kruskal–Wallis test for continuous variables with skewed distribution. A chi-square test for contingency tables was performed to detect group differences in categorical variables.

To investigate changes in headache frequency between the patient strata over the entire follow-up period and account for repeated measures by patient, mixed-effect logistic regression was performed using headache (dichotomised at the value ≥ 2) as the outcome variable. Since only patients in the ADM and ICU strata were followed up to 12 months after injury, two separate models were performed: one comparing all patient strata (ER, ADM and ICU) up to 6 months post injury (baseline and 3 and 6 months) and a second model only comparing ADM and ICU up to 12 months post injury (baseline and 3, 6 and 12 months). Time, patient stratum and time-by-patient stratum interaction were introduced as fixed effects in all models. Based on the mixed-effects logistic regression, we estimated risk differences with 95% confidence intervals (CIs) from baseline to 6 months using the delta method. For comparison of the effects of different cutoffs, the analysis was also performed using headache dichotomised at the values of ≥ 3 as the outcome variable.

Mixed-effect logistic regression analyses were performed to investigate whether changes in the proportion reporting headache (dichotomised at the value of ≥ 2 or ≥ 3) during the follow-up period could be predicted by age, sex, patient stratum, education, pre-injury ASA-PS and psychiatric comorbidities, GCS score, intracranial injury on CT, Brain Injury AIS, ISS (ISS Face was omitted due to high correlation with ISS), and the RPQ items “feeling depressed”, “fatigue” and “sleep disturbance” (dichotomised at the value of ≥ 2) measured at baseline. Additionally, visual problems, neck pain and mobility problems measured at 3 months after injury were

assessed as predictors. As described, two different models were performed with different follow-up times. Time and all predictor variables were treated as fixed effects in the models. Interaction effects between time and fixed factors were verified by introducing product terms. All models included a random intercept.

Missing outcome data were handled by mixed-effects logistic regression models (i.e. no imputation was required). Missing predictor data were handled by multiple imputations, generating 10 imputed datasets, applying the multiple imputation by chained equations procedure in Stata [37]. The mixed-effect logistic regression models were repeated in the 10 imputed datasets, and results were pooled using Rubin’s rule.

All statistical analyses were performed using IBM SPSS Statistics for Windows version 29 (Armonk, NY, USA: IBM Corp.) and Stata 17 (Stata Corp LLC, College Station, TX, USA). A *p*-value of < 0.05 was considered statistically significant in all analyses.

Results

A total of 2,291 patients responded to the headache item at baseline. Table 1 shows the demographic and injury characteristics by patient strata; 746 patients were included in the ER stratum, 1,146 in ADM and 399 in ICU. The median age of the total sample was 50 (IQR 30, 66) years, and 63.5% of the participants were male. The median education was 13 (IQR 11, 16) years. Sociodemographic and injury severity characteristics differed significantly between patient strata. According to GCS score, 93.3% of the total sample had sustained mild, 2.8% moderate and 3.9% severe TBI. Regarding the proportion who reported receiving treatment for pre-injury migraine, no statistically significant differences existed between the ER (12.0%), ADM (11.1%) and ICU (8.6%) strata.

Table 2 shows the proportion of patients in each stratum who reported headache at each cutoff level at baseline. Applying a cutoff score of ≥ 2 (mild problem) revealed that a total of 59.3% reported headache at baseline. When using a more conservative cutoff score of ≥ 3 (indicating a moderate or severe problem), the frequency was 29.3%. The median RPQ headache score was similar across all patient strata (2, IQR 0–3, *p* = 0.121), with no significant between-strata differences in the frequency who reported headache when applying cutoffs of ≥ 2 and ≥ 3 . However, additional analysis of patients who reported severe headache only (cutoff 4) showed significant differences between the strata (*p* = 0.030), with the highest frequency in patients admitted to the ICU (11.5% vs 7% in patients admitted to the ER). The proportion of patients in each stratum who reported headache at 3, 6 and 12 months of follow-up is presented in Additional File 1.

Table 2 Headache frequency at baseline by patient stratum and RPQ headache severity score

RPQ headache score at baseline	Total (n=2,291)	ER (n=746)	ADM (n=1,146)	ICU (n=399)	p-value
Median (IQR)	2 (0, 3)	2 (0, 3)	2 (0, 3)	2 (0, 3)	0.121
RPQ headache score ≥ 2	1,359 (59.3%)	434 (58.2%)	697 (60.8%)	228 (57.1%)	0.324
RPQ headache score ≥ 3	671 (29.3%)	206 (27.6%)	360 (31.4%)	105 (26.3%)	0.074
RPQ headache score 4	204 (8.9%)	52 (7.0%)	106 (9.2%)	46 (11.5%)	0.030

The proportion who reported RPQ headache score < 2 is not presented in the table

Abbreviations: RPQ The Rivermead Post-Concussion Symptoms Questionnaire, ER Emergency room stratum, ADM Admission stratum (hospital ward), ICU Intensive care unit stratum, IQR interquartile range

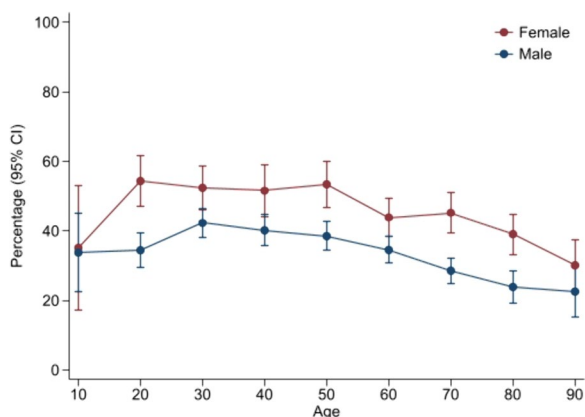


Fig. 1 Frequency of patients with headache (RPQ cutoff ≥ 2) at baseline by 10-year age interval and sex

Figure 1 shows the frequency of reporting headache (cutoff ≥ 2) at baseline by sex and 10-year age interval. The frequency was highest in female patients across all age groups, with a total of 66.9% of females and 55.0% of males reporting headache. The highest frequency of moderate or severe headache (≥ 3) was found in women aged 20–29 years (17.6%) and men aged 20–29 years (21.2%). The lowest was in both female and male patients aged 0–9 years (0% and 1.1%, respectively) and 90–99 years (1.0% and 0%, respectively). Applying cutoff ≥ 3, revealed that 37.3% of female patients and 24.7% of male patients reported headache.

Change in headache frequency across 6 and 12 months follow-up

The estimated proportion of patients reporting RPQ headache scores of ≥ 2 by patient strata up to 6 months (all strata), in addition to scores of ≥ 2 and ≥ 3 up to 12 months (ADM and ICU strata), are reported in Fig. 2. Statistically significant decreases occurred in the proportions of individuals reporting headache from baseline to 3, 6 and 12 months within all strata. The same tendency

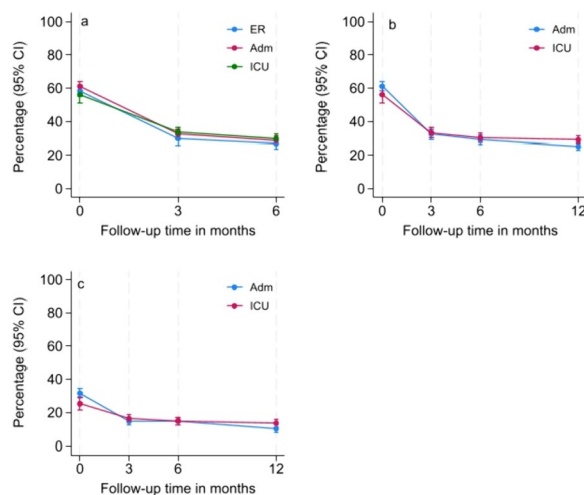


Fig. 2 a Estimated proportions of patients with headache (cutoff ≥ 2) by ER, ADM and ICU strata up to 6 months, b Estimated proportions of patients with headache (cutoff ≥ 2) by ADM and ICU strata up to 12 months, c Estimated proportions of patients with headache (cutoff ≥ 3) by ADM and ICU strata up to 12 months

was observed when assessing change in headache frequency using GCS score to classify mild, moderate and severe TBI instead of patient strata, and results showed no statistically significant between-group change in estimated proportion of patients with RPQ cutoff ≥ 2 from baseline to 12 months follow-up (see Additional file 2). No statistically significant change occurred in the estimated proportion reporting headache (cutoffs of ≥ 2 or ≥ 3) in the ER, ADM and ICU strata across the first 6 months after injury. However, a statistically significant change occurred between the ADM and ICU strata from baseline to 12 months follow-up using a cutoff of ≥ 2 (mean change 0.08, 95% CI 0.02 to 0.15, p=0.006). Applying a RPQ headache score of ≥ 3 additionally showed a statistically significant change between the ADM and ICU strata from baseline to 3 months (mean change 0.07, 95% CI 0.02 to 0.12, p=0.005).

Predictors of change in headache severity

We used four models to assess whether change in the proportion who reported RPQ headache scores of ≥ 2 and ≥ 3 could be predicted by demographic variables, injury severity indicators and comorbid conditions up to 6 (model 1 and 2, all strata) and 12 (model 3 and 4, ICU and ADM strata) months after injury. All statistically significant and non-significant fixed effects from the full model and their coefficients, p -values and 95% CIs are presented in Tables 3 and 4.

In model 1 (cutoff ≥ 2), time, age, sex, pre-injury ASA, Brain Injury AIS, ISS, depressive symptoms, sleep disturbance, fatigue, neck pain and vision problems yielded significant effects on the probability of headache frequency over the first 6 months after injury. Younger patients, female patients, and those with severe pre-morbid somatic disease, more severe head injury (Brain Injury AIS) and less severe overall injury (ISS), post-injury comorbidity (depressive symptoms and sleep disturbance), fatigue, presence of neck pain and vision problems, and shorter time since injury were more likely to have headache. Except for pre-injury ASA, the same predictors remained statistically significant in model 2 (cutoff ≥ 3). Additionally, patients with pre-injury psychiatric conditions had a statistically significantly higher probability of headache when applying a cutoff of ≤ 3 .

In model 3 (cutoff ≥ 2), time, age, sex, Brain Injury AIS, ISS, depressive symptoms, fatigue, neck pain and vision problems were significant predictors of headache probability across the first 12 months after injury. A shorter time since injury, younger age, female sex, more severe head injury, less severe overall injury (ISS), more depressive symptoms and fatigue, presence of neck pain and vision problems predicted a higher probability of headache. When applying a cutoff of ≥ 3 (model 4), age, sex, Brain Injury AIS, ISS, depressive symptoms, fatigue, neck pain and vision problems remained statistically significant predictors. Additionally, a statistically significantly higher probability of headache existed in patients with sleep problems and premorbid psychiatric conditions.

Significant interaction effects between time and predictors

In model 1 (all strata, cutoff ≥ 2), statistically significant interaction effects existed between time and pre-injury ASA, pre-injury psychiatric disease, Brain Injury AIS, ISS, fatigue (Fig. 3a), neck pain (Fig. 3b) and vision problems (Fig. 3c). The significant interaction effect between time and pre-morbid somatic disease suggested that patients with severe pre-morbid somatic disease tended to initially report lower headache, with a decrease from baseline to 3 months, and

thereafter increased from 3 to 6 months of follow-up. Patients with no or mild pre-injury somatic disease initially reported more headache and thereafter a steady decrease from baseline to 3 and 6 months. Patients with less severe overall injury (ISS) initially tended to report more headache but showed a steeper decline in headache from 3 to 6 months. Additionally, patients with pre-injury psychiatric problems, more severe head injury, fatigue, neck pain and vision problems had a higher probability of headache over the first 6 months after injury. In model 3 (all strata, cutoff ≥ 3), the same variables remained statistically significant, except for vision problems and pre-injury ASA, which were no longer significant. Additionally, patients without mobility problems initially reported more headache but thereafter a steeper decline and lower headache than patients with mobility problems at 3 and 6 months.

In model 3 (ADM and ICU strata, cutoff > 2), we found statistically significant interaction effects between time and ICU stratum, age, ISS, neck pain and mobility. Younger age (Fig. 4a), more severe fatigue and neck problems (Fig. 4c) were associated with a higher probability of headache across the first 12 months after injury. Patients with mobility problems tended to report the same degree of headache as those without mobility problems at baseline, but the trajectory diverged somewhat thereafter, showing that patients with mobility problems reported more headache over time. Moreover, patients with less severe overall injury (ISS) tended to initially report more headache but a steeper decline in headache than patients with more severe overall injury from 6 to 12 months, as well as lower headache than patients with more severe injury at 12 months of follow-up (Fig. 4b). In model 4 (ADM and ICU strata, cutoff 3), the same variables remained statistically significant, except for ICU stratum and mobility problems, which were no longer significant. Moreover, patients with more severe fatigue consistently reported more headache and slower improvement than patients without fatigue. All statistically significant main effects and time interactions of the variables not presented in the main text are presented in Additional files 3, 4, 5 and 6.

Discussion

Using data from the large-scale, observational CENTER-TBI study, we assessed the frequency of acute and persistent headache following TBI, changes in headache frequency across clinical care pathways, severity of injury and predictors of headache in the first year after TBI.

Table 3 Predictors of change in headache in the first 6 months after injury (all strata)

	Model 1 (RPQ cutoff ≥ 2)			Model 2 (RPQ cutoff ≥ 3)		
	Coef	95% CI	p-value	Coef	95% CI	p-value
Intercept	1.13***	0.61 to 1.65	< 0.001	-0.83**	-1.35 to -0.31	0.002
Time	-0.38***	-0.51 to -0.25	< 0.001	-0.21**	-0.35 to -0.07	0.002
Patient stratum						
ER	Ref			Ref		
ADM	-0.16	-0.49 to 0.16	0.331	-0.12	-0.47 to 0.22	0.478
ICU	-0.18	-0.69 to 0.31	0.464	-0.24	-0.77 to 0.28	0.358
Age, y	-0.01***	-0.02 to -0.01	< 0.001	-0.01***	-0.02 to -0.01	< 0.001
Sex (f=0, m=1)	-0.55***	-0.80 to -0.29	< 0.001	-0.52***	-0.77 to -0.26	< 0.001
Preinjury ASA-PS						
Healthy	Ref			Ref		
Mild disease	0.18	-0.10 to 0.47	0.219	0.14	-0.14 to 0.44	0.325
Severe disease	-0.45*	-0.90 to 0.003	0.052	-0.12	-0.60 to 0.36	0.621
Pre-injury psychiatric	-0.05	-0.42 to 0.30	0.750	0.49**	0.13 to 0.85	0.007
Pre-injury migraine	0.27	-0.15 to 0.70	0.202	0.35	-0.17 to 0.88	0.180
GCS (3–15)	-0.16	-0.43 to 0.11	0.249	-0.04	-0.34 to 0.25	0.772
CT head intracranial injury	0.07	-0.22 to 0.37	0.614	0.17	-0.11 to 0.46	0.243
Brain Injury AIS (≥ 3)	1.01***	0.67 to 1.36	< 0.001	0.95***	0.59 to 1.30	< 0.001
ISS	-0.04***	-0.06 to -0.03	< 0.001	-0.04***	-0.06 to -0.02	< 0.001
Feeling depressed at baseline (≥ 3)	0.63***	0.30 to 0.96	< 0.001	0.53*	0.07 to 0.99	0.023
Sleep disturbance at baseline (≥ 3)	0.31*	0.01 to 0.61	0.037	0.84***	0.48 to 1.20	< 0.001
Fatigue at baseline (≥ 3)	0.73***	0.47 to 0.99	< 0.001	0.99***	0.68 to 1.29	< 0.001
Neck pain	0.89***	0.62 to 1.17	< 0.001	0.79***	0.50 to 1.09	< 0.001
Vision problems	0.37*	0.04 to 0.69	0.026	0.48**	0.15 to 0.82	0.005
Mobility problems	-0.18	-0.53 to 0.17	0.308	-0.14	-0.48 to 0.19	0.403
Time x Predictors						
Time x ICU	0.08	-0.03 to 0.20	0.181	0.10	-0.03 to 0.24	0.150
Time x Age	-0.001	-0.002 to 0.0005	0.178	-0.01	-0.003 to 0.0007	0.230
Time x Sex	-0.02	-0.08 to 0.03	0.486	0.01	-0.05 to 0.07	0.837
Time x Pre-injury ASA-PS						
Time x Mild disease	0.03	-0.03 to 0.10	0.354	0.01	-0.06 to 0.09	0.709
Time x Severe disease	0.21***	0.10 to 0.33	< 0.001	0.06	-0.06 to 0.19	0.313
Time x Pre-injury psychiatric	0.08*	-0.0002 to 0.17	0.051	-0.02	-0.11 to 0.07	0.662
Time x Pre-injury migraine	0.02	-0.07 to 0.11	0.663	0.01	-0.11 to 0.12	0.946
Time x GCS	0.0003	-0.06 to 0.06	0.991	-0.03	-0.10 to 0.02	0.265
Time x CT head intracranial injury	0.03	-0.04 to 0.10	0.407	0.01	-0.06 to 0.09	0.737
Time x Brain Injury AIS	-0.10*	-0.19 to -0.01	0.019	-0.10*	-0.20 to -0.01	0.043
Time x ISS	0.005**	0.001 to 0.009	0.003	0.01*	0.0007 to 0.008	0.019
Time x Feeling depressed	-0.04	-0.12 to 0.03	0.305	0.02	-0.09 to 0.15	0.659
Time x Sleep disturbance	0.02	-0.05 to 0.10	0.529	-0.9	-0.19 to 0.008	0.071
Time x Fatigue	-0.12**	-0.20 to -0.04	0.002	-0.16***	-0.25 to -0.08	< 0.001
Time x Neck pain	0.12**	0.05 to 0.19	0.001	0.15***	0.08 to 0.23	< 0.001
Time x Vision	0.09*	0.01 to 0.16	0.016	0.05	-0.03 to 0.13	0.216
Time x Mobility	0.07	-0.004 to 0.15	0.065	0.11**	0.02 to 0.19	0.009

6-month follow-up all strata. Model 1: Headache cutoff ≥ 2 , Model 2: Headache ≥ 3

Abbreviations: ER Emergency room stratum, ADM Admission stratum (hospital ward), ICU Intensive care unit stratum, ASA-PS American Society of Anesthesiologists Physical Status Classification System score, GCS Glasgow Coma Scale, CT Computed tomography, AIS Abbreviated Injury Scale, ISS Injury Severity Score

* = $p < 0.05$; ** = $p < 0.01$; *** = $p < 0.001$

Table 4 Predictors of change in headache in the first 12 months post injury (ADM and ICU)

	Model 3 (RPQ cutoff ≥ 2)			Model 4 (RPQ cutoff ≥ 3)		
	Coef	95% CI	p-value	Coef	95% CI	p-value
Intercept	0.50	-0.08 to 1.08	0.092	-1.40***	-1.99 to -0.80	< 0.001
Time	-0.14***	-0.23 to -0.06	< 0.001	-0.08	-0.17 to 0.007	0.070
Patient stratum						
ADM	Ref			Ref		
ICU	-0.10	-0.47 to 0.25	0.560	-0.11	-0.50 to 0.27	0.574
Age, y	-0.01***	-0.02 to -0.009	< 0.001	-0.01**	-0.01 to -0.004	0.002
Sex (f=0, m=1)	-0.49**	-0.77 to -0.21	0.001	-0.39**	-0.67 to -0.10	0.008
Preinjury ASA-PS						
Healthy	Ref			Ref		
Mild disease	0.19	-0.12 to 0.51	0.236	0.03	-0.30 to 0.37	0.838
Severe disease	-0.12	-0.63 to 0.39	0.640	-0.22	-0.78 to 0.33	0.433
Pre-injury psychiatric	-0.21	-0.62 to 0.19	0.299	0.42*	0.01 to 0.83	0.043
Pre-injury migraine	0.31	-0.22 to 0.85	0.193	0.33	-0.24 to 0.91	0.257
GCS (3–15)	-0.13	-0.36 to 0.10	0.282	-0.10	-0.36 to 0.15	0.416
CT head intracranial injury	0.02	-0.26 to 0.31	0.868	0.13	-0.16 to 0.43	0.386
Brain Injury AIS (≥ 3)	0.93***	0.58 to 1.28	< 0.001	0.90***	0.53 to 1.28	< 0.001
ISS	-0.04***	-0.06 to -0.03	< 0.001	-0.04***	-0.05 to -0.02	< 0.001
Feeling depressed at baseline	0.57**	0.19 to 0.96	0.003	0.78**	0.22 to 1.35	0.006
Sleep disturbance at baseline	0.28	-0.09 to 0.66	0.133	0.83***	0.43 to 1.24	< 0.001
Fatigue at baseline	0.59***	0.31 to 0.87	< 0.001	0.76***	0.40 to 1.12	< 0.001
Neck pain	1.03***	0.74 to 1.32	< 0.001	0.85***	0.53 to 1.18	< 0.001
Vision problems	0.45**	0.12 to 0.77	0.006	0.44*	0.10 to 0.78	0.011
Mobility problems	-0.15	-0.49 to 0.18	0.363	0.03	-0.30 to 0.37	0.850
Time x Predictors						
Time x ICU	0.06*	0.01 to 0.11	0.013	0.05	-0.001 to 0.11	0.055
Time x Age	-0.001**	-0.002 to -0.0006	0.002	-0.002**	-0.003 to -0.0008	0.001
Time x Sex	-0.02	-0.06 to 0.01	0.240	-0.03	-0.08 to 0.006	0.092
Time x Pre-injury ASA-PS						
Time x Mild disease	0.01	-0.03 to 0.05	0.628	0.01	-0.03 to 0.07	0.507
Time x Severe disease	0.06	0.007 to 0.13	0.081	0.01	-0.07 to 0.10	0.747
Time x Preinjury psychiatric	0.04	-0.01 to 0.09	0.157	0.001	-0.06 to 0.06	0.963
Time x Migraine	-0.02	-0.09 to 0.04	0.488	-0.03	-0.11 to 0.04	0.433
Time x GCS	-0.01	0.04 to 0.01	0.278	-0.01	-0.05 to 0.01	0.344
Time x CT head intracranial injury	0.02	-0.02 to 0.06	0.310	0.02	-0.02 to 0.07	0.257
Time x Brain Injury AIS	-0.04	0.09 to 0.007	0.090	-0.04	-0.11 to 0.01	0.137
Time x ISS	0.003**	0.001 to 0.005	0.001	0.003**	0.001 to 0.005	0.001
Time x Feeling depressed	-0.03	-0.08 to 0.02	0.233	-0.05	-0.15 to 0.03	0.248
Time x Sleep disturbance	0.03	-0.01 to 0.07	0.183	-0.04	-0.11 to 0.02	0.192
Time x Fatigue	-0.03	-0.08 to 0.01	0.121	-0.07**	-0.13 to -0.02	0.004
Time x Neck pain	0.04*	0.005 to 0.09	0.025	0.00***	0.04 to 0.13	< 0.001
Time x Vision	0.01	-0.03 to 0.05	0.615	0.01	-0.04 to 0.06	0.703
Time x Mobility	0.06**	0.02 to 0.11	0.002	0.04	-0.004 to 0.09	0.076

12-month follow-up ADM and ICU strata Model 3: Headache cutoff ≥ 2 , Model 4: Headache ≥ 3

Abbreviations: ADM Admission stratum (hospital ward), ICU Intensive care unit stratum, ASA-PS American Society of Anaesthesiologists Physical Status Classification System score, GCS Glasgow Coma Scale, CT Computed tomography, AIS Abbreviated Injury Scale, ISS Injury Severity Score

* = $p < 0.05$; ** = $p < 0.01$; *** = $p < 0.001$

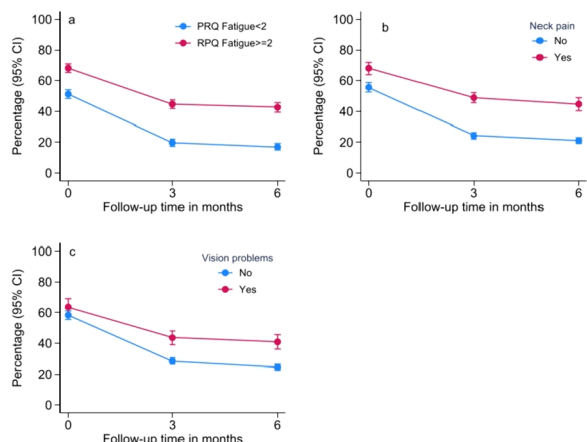


Fig. 3 a Main effect and time interaction of fatigue on headache changes, b main effect and time interaction of neck pain on headache changes, c main effect and time interaction of vision problems on headache changes

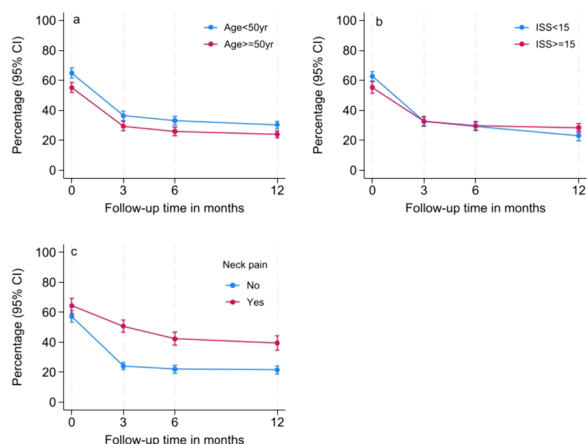


Fig. 4 a Main effect and time interaction of age on headache changes, b main effect and time interaction of ISS on headache changes, c main effect and time interaction of neck pain on headache changes

Headache frequency and severity across the first 12 months after injury

As hypothesised, we found a high frequency of headache throughout the whole sample included in this study: 59.3% of patients reported acute headache (RPQ cutoff ≥ 2) at study enrolment, with similar frequencies across all strata. The proportion of patients in the ER stratum who reported headache (58.2%) aligns with previous studies on mild TBI, including TRACK-TBI [27], which reported a prevalence of 60.4% at 2 weeks after the injury, as well as the Dutch UPFRONT study (51.0%) [38].

As expected, the proportion of headache in the ER stratum decreased substantially from baseline to 3 months and remained stable from 3 to 6 months. Similar trajectory trends were observed in the ICU and ADM strata across 12 months. However, more than 25% of patients experienced headache at 12 months after injury. These findings suggest that interventions to improve the experience of headache are needed if symptoms have not resolved by 3 months [27]. Current treatment approaches to headache after TBI are guided by phenotypic expression and the use of headache diaries to assess treatment effectiveness. Factors that contribute to the chronicity of PTH include the characteristics of head trauma, previous history of headache from head trauma, presence of posttraumatic stress disorder, other mental health conditions and other comorbidities. Therefore, the management of PTH should be multidisciplinary. However, a lack of understanding regarding the relevance of these factors and to what extent they influence the treatment response has impeded the development of specific treatment approaches [39].

Female and younger (≤ 40 years) patients reported a higher frequency of headache at baseline compared to males and older adults. The frequency of severe headache (RPQ cutoff 4) was highest in patients admitted to the ICU. Our results suggest that more severe TBI may increase the risk of headache, probably due to neuro-morphological brain changes. Hoffman et al. also reported that TBI severity (based on the duration of post-traumatic amnesia) was a risk factor for the development of persistent headache [5]. However, this contrasts with previous research that reported an increased risk of headache in those with mild TBI [9, 40]. Several reasons could explain this. Patients with more severe injuries can be reasonably assumed to have a higher risk of experiencing headache, both from peripheral sources such as the dura mater and bone, which are innervated by pain receptors called nociceptors [4], and from central sources, such as lesions in the central somatosensory nervous system [41]. Additionally, PTH is widely prevalent after mild TBI, which may be attributed to differences in its diagnosis among studies, the length of time between the injury and evaluation, and the specific population being tested (e.g. civilians or veterans) [4]. The patients in this study were mainly recruited from trauma referral centres and, therefore, were on the more severe end of the mild TBI spectrum.

Findings regarding the association between headache and demographic factors are inconsistent in the literature [27]. In this study, younger age and female sex were associated with more severe headache, aligning with results from other large-scale studies [27]. The association between younger age and higher levels of headache

may reflect the TBI severity in this population (9.4% of patients aged ≤ 40 years had moderate or severe TBI, in contrast to 5.2% of patients aged > 40 years). Previous studies have also found female sex to be associated with headache after TBI [5, 14, 16, 17].

Predictors of change in headache frequency and severity in the first 12 months after injury

The present results also support a relationship between headache and more severe TBI. This was indicated by the significant Brain Injury AIS score, which was associated with the headache severity level. This aligns with a study that found a dose–response relationship between TBI severity and headache outcomes [42]. However, we also found a significant association between less severe overall injury (ISS) and more severe headache. Looking further into this association revealed that although patients with less severe overall injuries initially reported more headache, they subsequently had a steeper decline in symptoms, and at 12 months, they reported less headache than patients with more severe overall injuries. A possible explanation for this may be that patients with more severe overall injuries are provided with more analgetics in the acute stage, which may prevent pain and headache sensitisation. Some evidence suggests that skull and face fractures are associated with a subsequent risk of headache and migraines [43, 44]. In our study, a high correlation existed between the total ISS and ISS Face scores; thus, we included only the total ISS in our models to adjust for the overall injury severity.

Neuroimaging studies have reported that patients with PTH displayed reduced cortical thickness in various bilateral frontal and right parietal regions, with headache burden being negatively correlated to bilateral superior frontal cortex thickness [45]. Schwedt et al. [46] found that the left superior frontal lobe, right lateral orbitofrontal lobe and right supramarginal gyrus differed between persistent PTH and healthy controls, and not between migraine patients and healthy controls, suggesting a certain degree of brain structures involvement or pathophysiological specificity unique to persistent PTH, regardless of the clinical phenotype. Microvascular channels that course between the skull bone and marrow and dura mater could also be important [47]. The human skull bone marrow contains microvascular channels that allow inflammatory cells to migrate into the meninges and potentially other intracranial structures associated with headache in animal studies [47]. Most nerve fibers in the bone marrow are nociceptive. The initial mechanisms to activate meningeal nociceptors involve the release of signalling molecules like calcitonin gene-related peptide (CGRP) and pituitary adenylate cyclase-activating polypeptide-38

(PACAP-38) [48]. Both CGRP and PACAP induce migraine-like headaches in migraine patients [49]. Patients with persistent PTH may experience worsened headaches with migraine-like characteristics [50, 51]. Binding of CGRP and PACAP-38 to their G protein-coupled receptors opens ATP-sensitive potassium (K_{ATP}) channels on the vascular smooth muscle cells in the walls of the meningeal arteries [48, 52, 53]. Additionally, the K_{ATP} channel opener levocromakalim induces migraine-like headaches in people with persistent PTH but no history of migraine [54]. Therefore, blocking K_{ATP} channel could be a potential drug target for PTH [54].

The presence of post-injury comorbidities (feeling depressed, fatigue, sleep disturbance, vision problems, neck pain and mobility problems) was associated with headache severity levels in the entire population in the first 6 months after the injury, and neck pain also predicted headache at 12 months in the ADM and ICU strata. Previous TBI studies with mixed-severity samples have demonstrated the association between these comorbidities and headache [27]. For example, depression and other aspects of emotional distress are common after TBI and contribute to the duration and intensity of headache [20]. Headache may also be triggered by problems in the visual system, such as vergence impairment, accommodation, fixation disparity, saccades, pursuits and secondary to oculomotor dysfunction [22]. The findings of our study are of clinical importance to rehabilitation professionals given the impact these comorbidities may have on daily activity levels, participation and health-related quality of life. Treating headache in itself and the symptoms that co-occur and interact with headache following TBI are currently the best recommendations for treatment, including a multidisciplinary approach to the clinical management of persistent headache [27].

Overall, the same factors predicted headache regardless of the applied cutoff (≥ 2 or ≥ 3), indicating the reliability of the predictors used in the study. The time since injury predicted changes on its own and interacted with a range of predictors, whereas TBI severity and neck pain appeared to be the most robust predictors in all models. Patients with TBI have significantly higher odds of sustaining a comorbid neck injury [55]. Comorbid neck pain is associated with greater headache severity and physical limitation [26] and contributes to post-concussion symptoms [56]. Major structural or other pathologies in the neck should be ruled out, and evidence-based guidelines for non-pharmacological treatment such as general exercise should be recommended [57]. Taken together, the study findings may help health professionals to identify patients at risk of persistent headache and plan individualised therapy.

Limitations

The study findings are not necessarily generalisable to individuals who have sustained a minimal or mild TBI without indication for a CT head scan since participants were mainly recruited from trauma referral centres. One of the major limitations of this study is the use of a single-item operationalisation of headache following TBI rather than the ICHD-3 [2]. However, the ICHD-3 does not include specific clinical features suggestive of PTH, which is a limitation of the classification system. Nevertheless, headache measured in this study represents a secondary headache attributed to injury that developed within the first two weeks after injury. In addition, this was the only opportunity to measure headache and its changes when using the CENTER-TBI data. The experience of symptoms can vary, raising the possibility that the reported ratings of headache symptoms do not reflect the overall experience (both over- and underreporting are possible). This may also be impacted by the wording of the RPQ headache item, which asks whether headache has been a problem during the previous 7 days compared to before the injury. Translating a subjective experience such as headache into an objective context is challenging. Using headache assessment instruments (including headache diaries) with established validity in specific patient groups is recommended [58]. Unfortunately, such instruments were not available in this study. Further, the usage of specific headache tools may not be as achievable in a hectic clinical setting as the broad current use of the RPQ; our results may thus be more easily transferrable to common clinical practice. However, based on the prevalence of headache after TBI found in this and several other studies, changing clinical practice towards investing more focus and time in assessing and treating headache would be beneficial for the individual patient and from a socioeconomic viewpoint.

The first assessment of headache was performed at mean 2.5 days after injury. Consequently, the proportion of patients with more severe injuries who responded to the headache question was lower at baseline than at 3, 6 and 12 months follow-up. However, to handle missing endpoint measures, logistic mixed-effect regression was applied which retain all available measures at each time point in the analysis, and gives unbiased results under the assumption of missing at random. Additionally, as we did not have a comparison group, for instance individuals who had sustained traumatic orthopedic injuries without head impact, we were unable to compare headache frequencies and establish whether the predictors were TBI-specific.

PTH has increasingly been conceptualised as a heterogeneous headache disorder, with patients often classified into sub-phenotypes that might be more responsive

to specific therapies [27]. Substantial evidence suggests that a history of pre-injury migraine is one of the most consistent predictors of acute and persistent PTH across studies [39]. However, an important limitation of our study was that the history of pre-injury migraine was assessed by a single question of whether the patient reported receiving treatment for migraine before the injury, which may have led to underestimation of the presence of pre-injury migraine and a subsequent lack of association with post-injury headache. Approximately 11% of the total sample reported receiving treatment for migraine before the injury, compared to an estimated global migraine prevalence of 14% to 15% [59]. Moreover, we did not record the history of other forms of headache, such as tension-type headache.

Conclusion

Headache is a common symptom after TBI, especially for female and younger patients. It tends to decrease within the first 3 months after injury before stabilising. A substantial proportion of patients still experience headache at 12 months after injury. Variables such as specific headache phenotypes, neurocognitive function, structural brain abnormalities and potential blood biomarkers, which were not included in this study, should be assessed in future research. Translational research is needed to advance the clinical decision-making process and targeted medical treatment of headache.

Abbreviations

ADM	Admitted to ward
AIS	Abbreviated injury scale
ASA-PS	American society of anesthesiologists physical status classification
CENTER-TBI	Collaborative european neurotrauma effectiveness research in traumatic brain injury
CGRP	Calcitonin gene-related peptide
CI	Confidence interval
CT	Computed tomography
ER	Emergency room
GCS	Glasgow coma scale
ICHD-3	International classification of headache disorders 3rd edition
ICU	Intensive care unit
IQR	Interquartile range
ISS	Injury severity score
PACAP-38	Pituitary adenylate cyclase-activating polypeptide-38
PTH	Posttraumatic headache
RPQ	Rivermead post concussion symptoms questionnaire
SD	Standard deviation
TBI	Traumatic brain injury
TRACK-TBI	Transforming research and clinical knowledge in TBI

Supplementary Information

The online version contains supplementary material available at <https://doi.org/10.1186/s10194-024-01751-0>.

Additional file 1. Headache frequency at 3, 6 and 12 months by patient stratum.

Additional file 2. Estimated proportion of patients with headache by GCS score up to 12 months postinjury.

Additional file 3. Significant interaction effects between time and predictors (RPQ cutoff ≥ 2 , up to 6 months postinjury).

Additional file 4. Significant interaction effects between time and predictors (RPQ cutoff ≥ 3 , up to 6 months postinjury).

Additional file 5. Significant interaction effects between time and predictors (RPQ cutoff ≥ 2 , up to 12 months postinjury).

Additional file 6. Significant interaction effects between time and predictors (RPQ cutoff ≥ 3 , up to 12 months postinjury).

Additional file 7. STROBE checklist.

Acknowledgements

Not applicable.

CENTER-TBI participants and investigators

Cecilia Åkerlund²⁰, Krisztina Amrein²¹, Nada Andelic^{1,2}, Lasse Andreassen²², Audny Anke²³, Anna Antoni²⁴, Gérard Audibert²⁵, Philippe Azouvi²⁶, Maria Luisa Azzolini²⁷, Ronald Bartels²⁸, Pál Barzó²⁹, Romuald Beauvais³⁰, Ronny Beer³¹, Bo-Michael Bellander³², Antonio Belli³³, Habib Benali³⁴, Maurizio Berardino³⁵, Luigi Beretta²⁷, Morten Blaabjerg³⁶, Peter Bragge³⁷, Alexandra Brazinova³⁸, Vibeke Brinck³⁹, Joanne Brooker⁴⁰, Camilla Brorsson⁴¹, Andras Buki⁴², Monika Bullinger⁴³, Manuel Cabeleira⁴⁴, Alessio Caccioppola⁴⁵, Emiliana Calappi⁴⁶, Maria Rosa Calv²⁷, Peter Cameron⁴⁶, Guillermo Carbayo Lozano⁴⁷, Marco Carbonara⁴⁵, Simona Cavallo³⁵, Giorgio Chevallard⁴⁸, Arturo Chieragato⁴⁸, Giuseppe Citerio^{49,50}, Hans Clusmann⁵¹, Mark Coburn⁵², Jonathan Coles⁵³, Jamie D. Cooper⁵⁴, Marta Correia⁵⁵, Amra Čović⁵⁶, Nicola Curry⁵⁷, Endre Czeiter⁴², Marek Czosnyka⁴⁴, Claire Dahyot-Fizelier⁵⁸, Paul Dark⁵⁹, Helen Dawes⁶⁰, Véronique De Keyser⁶¹, Vincent Degos³⁴, Francesco Della Corte⁶², Hugo den Boogert²⁸, Bart Depreitere⁶³, Đula Đilvesi⁶⁴, Abhishek Dixit⁶⁵, Emma Donoghue⁴⁰, Jens Dreier⁶⁶, Guy-Loup Dulière⁶⁷, Ari Ercole⁶⁵, Patrick Esser⁶⁰, Erzsébet Ezer⁶⁸, Martin Fabricius⁶⁹, Valery L. Feigin⁷⁰, Kelly Foks⁷¹, Shirin Frisvold⁷², Alex Furmanov⁷³, Pablo Gagliardo⁷⁴, Damien Galanaud³⁴, Dashiell Gantner⁴⁶, Guoyi Gao⁷⁵, Pradeep George⁷⁶, Alexandre Ghuyssen⁷⁷, Lelde Giga⁷⁸, Ben Glocker⁷⁹, Jagoš Golubovic⁶⁴, Pedro A. Gomez⁸⁰, Johannes Gratz⁸¹, Benjamin Gravesteijn⁸², Francesca Grossi⁶², Russell L. Gruen⁸³, Deepak Gupta⁸⁴, Juanita A. Haagsma⁸², Iain Haitsma⁸⁵, Raimund Helbok³¹, Eirik Helseth⁵⁶, Lindsay Horton⁸⁶, Jilske Huijben⁸², Peter J. Hutchinson⁸⁷, Bram Jacobs¹⁵, Stefan Jankowski⁸⁸, Mike Jarrett³⁹, Ji-yao Jiang⁷⁶, Faye Johnson⁸⁹, Kelly Jones⁷⁰, Mladen Karan⁶⁴, Angelos G. Kolias⁸⁷, Erwin Kompanje⁹⁰, Daniel Kondziella⁶⁹, Evgenios Kornaropoulos⁶⁵, Lars-Owe Koskinen⁹¹, Noémi Kovács⁹², Ana Kowark⁹³, Alfonso Lagares⁹⁰, Linda Lanyon⁷⁶, Steven Laurfeys⁹⁴, Fiona Lecky^{95,96}, Didier Ledoux⁹⁴, Rolf Lefering⁹⁷, Valerie Legrand⁹⁸, Aurelie Lejeune⁹⁹, Leon Levi¹⁰⁰, Roger Lightfoot¹⁰¹, Hester Lingsma⁸², Andrew I.R. Maas^{61,102}, Ana M. Castaño-León⁸⁰, Marc Maegle¹⁰³, Marek Majdan³⁸, Alex Manara¹⁰⁴, Geoffrey Manley¹⁰⁵, Costanza Martino¹⁰⁶, Hugues Maréchal⁶⁷, Julia Mattern¹⁰⁷, Catherine McMahon¹⁰⁸, Béla Melegh¹⁰⁹, David Menon⁶⁵, Tomas Menovsky^{61,102}, Ana Mikolic⁸², Benoit Misset⁹⁴, Visakh Muraleedharan⁷⁶, Lynnette Murray⁴⁶, Ancuta Negru¹¹⁰, David Nelson²⁰, Virginia Newcombe⁶⁵, Daan Nieboer⁸², József Nyírádi²¹, Otesile Olubukola⁹⁵, Matej Oresic¹¹¹, Fabrizio Ortolano⁴⁵, Aarno Palotie^{112,113,114}, Paul M. Parizel¹¹⁵, Jean-François Payen¹¹⁶, Natascha Perera³⁰, Vincent Perlberg³⁴, Paolo Persona¹¹⁷, Wilco Peul¹¹⁸, Anna Piippo-Karjalainen¹¹⁹, Matti Pirinen¹¹², Dana Pisis⁸², Horia Ples¹¹⁰, Suzanne Polinder⁸², Inigo Pomposo⁴⁷, Jussi P. Posti¹²⁰, Louis Puybasset¹²¹, Andreea Radoi¹²², Arminas Ragauskas¹²³, Rahul Raj¹¹⁹, Malinka Rambadagalla¹²⁴, Isabel Retel Helmrich⁸², Jonathan Rhodes¹²⁵, Sylvia Richardson¹²⁶, Sophie Richter⁶⁵, Samuli Ripatti¹¹², Saulius Rocka¹²³, Cecilie Roe^{1,2,5}, Olav Roise^{127,128}, Jonathan Rosand¹¹⁴, Jeffrey V. Rosenfeld¹³⁰, Christina Rosenlund¹³¹, Guy Rosenthal⁷³, Rolf Rossaint⁹³, Sandra Rossi¹¹⁷, Daniel Rueckert⁷⁹, Martin Rusnák¹³², Juan Sahuquillo¹²², Oliver Sakowitz^{107,133}, Renan Sanchez-Porrás¹³³, Janos Sandor¹³⁴, Nadine Schäfer⁹⁷, Silke Schmidt¹³⁵, Herbert Schoechl¹³⁶, Guus Schoonman¹³⁷, Rico Frederik Schou¹³⁸, Elisabeth Schwendenwein²⁴, Charlie Sewalt⁸², Ranjit D. Singh¹¹⁸, Toril Skandsen^{78,9}, Peter Smielewski⁴⁴, Abayomi Sorinola¹⁴⁰, Emmanuel Stamatakis⁹⁵, Simon Stanworth³⁷, Robert Stevens¹⁴¹, William Stewart¹⁴², Ewout W. Steyerberg^{82,143}, Nino Stocchetti¹⁴⁴, Nina Sundström¹⁴⁵, Riikka Takala¹⁴⁶, Viktória Tamás¹⁴⁰, Tomas Tamosiutis¹⁴⁷, Mark Steven Taylor³⁸, Aurore Thibaut⁹⁴, Braden Te Ao⁷⁰, Olli Tenovu¹²⁰, Alice Theadom¹¹, Matt

Thomas¹⁰⁴, Dick Tibboel¹⁴⁸, Marjolein Timmers⁹⁰, Christos Toliás¹⁴⁹, Tony Trapani⁴⁶, Cristina Maria Tudora¹¹⁰, Andreas Unterberg¹⁰⁷, Peter Vajkoczy¹⁵⁰, Shirley Vallance⁴⁶, Egils Valeinis⁷⁸, Zoltán Vámos⁶⁸, Mathieu van der Jagt¹⁵¹, Gregory Van der Steen⁶¹, Joukje van der Naalt¹⁵, Jeroen T.J.M. van Dijk¹¹⁸, Inge A. M. van Erp¹¹⁸, Thomas A. van Essen¹¹⁸, Wim Van Hecke¹⁵², Caroline van Heugten¹⁵³, Ernest van Veen⁸², Thijs Vande Vyvere¹⁵⁴, Roel P. J. van Wijk¹¹⁸, Alessia Vargiolu⁵⁰, Emmanuel Vega⁹⁹, Kimberley Velt⁸², Jan Verheyden¹⁵², Paul M. Vespa¹⁵⁵, Anne Vik^{139,156}, Rimantas Vilcinis¹⁴⁷, Victor Volovici⁸⁵, Nicole von Steinbüchel⁴, Daphne Voormolen⁸², Petar Vulekovic⁶⁴, Kevin K.W. Wang¹⁵⁷, Daniel Whitehouse⁶⁵, Eveline Wieggers⁸², Guy Williams⁶⁵, Lindsay Wilson⁸⁶, Stefan Winzeck⁶⁵, Stefan Wolf⁵⁸, Zhihui Yang¹²⁹, Peter Ylén¹⁵⁹, Alexander Younsi¹⁰⁷, Frederick A. Zeiler^{65,160}, Veronika Zelinkova³⁸, Agate Ziverte⁷⁸, Tommaso Zoerle⁴⁵

²⁰Department of Physiology and Pharmacology, Section of Perioperative Medicine and Intensive Care, Karolinska Institutet, Stockholm, Sweden

²¹János Szentágothai Research Centre, University of Pécs, Pécs, Hungary

²²Department of Neurosurgery, University Hospital Northern Norway, Tromsø, Norway

²³Department of Physical Medicine and Rehabilitation, University Hospital Northern Norway, Tromsø, Norway

²⁴Trauma Surgery, Medical University Vienna, Vienna, Austria

²⁵Department of Anesthesiology & Intensive Care, University Hospital Nancy, Nancy, France

²⁶Raymond Poincaré hospital, Assistance Publique – Hôpitaux de Paris, Paris, France

²⁷Department of Anesthesiology & Intensive Care, S Raffaele University Hospital, Milan, Italy

²⁸Department of Neurosurgery, Radboud University Medical Center, Nijmegen, The Netherlands

²⁹Department of Neurosurgery, University of Szeged, Szeged, Hungary

³⁰International Projects Management, ARTTIC, München, Germany

³¹Department of Neurology, Neurological Intensive Care Unit, Medical University of Innsbruck, Innsbruck, Austria

³²Department of Neurosurgery & Anesthesia & intensive care medicine, Karolinska University Hospital, Stockholm, Sweden

³³NIHR Surgical Reconstruction and Microbiology Research Centre, Birmingham, UK

³⁴Anesthésie-Réanimation, Assistance Publique – Hôpitaux de Paris, Paris, France

³⁵Department of Anesthesia & ICU, AOU Città della Salute e della Scienza di Torino - Orthopedic and Trauma Center, Torino, Italy

³⁶Department of Neurology, Odense University Hospital, Odense, Denmark

³⁷BehaviourWorks Australia, Monash Sustainability Institute, Monash University, Victoria, Australia

³⁸Department of Public Health, Faculty of Health Sciences and Social Work, Trnava University, Trnava, Slovakia

³⁹Quesgen Systems Inc., Burlingame, California, USA

⁴⁰Australian & New Zealand Intensive Care Research Centre, Department of Epidemiology and Preventive Medicine, School of Public Health and Preventive Medicine, Monash University, Melbourne, Australia

⁴¹Department of Surgery and Perioperative Science, Umeå University, Umeå, Sweden.

⁴²Department of Neurosurgery, Medical School, University of Pécs, Hungary and Neurotrauma Research Group, János Szentágothai Research Centre, University of Pécs, Hungary

⁴³Department of Medical Psychology, Universitätsklinikum Hamburg-Eppendorf, Hamburg, Germany

⁴⁴Brain Physics Lab, Division of Neurosurgery, Dept of Clinical Neurosciences, University of Cambridge, Addenbrooke's Hospital, Cambridge, UK

⁴⁵Neuro ICU, Fondazione IRCCS Cà Granda Ospedale Maggiore Policlinico, Milan, Italy

⁴⁶ANZIC Research Centre, Monash University, Department of Epidemiology and Preventive Medicine, Melbourne, Victoria, Australia

⁴⁷Department of Neurosurgery, Hospital of Cruces, Bilbao, Spain

⁴⁸NeuroIntensive Care, Niguarda Hospital, Milan, Italy

⁴⁹School of Medicine and Surgery, Università Milano Bicocca, Milano, Italy

⁵⁰NeuroIntensive Care Unit, Department Neuroscience, IRCCS Fondazione San Gerardo dei Tintori, Monza, Italy

⁵¹Department of Neurosurgery, Medical Faculty RWTH Aachen University, Aachen, Germany.

- ⁵²Department of Anesthesiology and Intensive Care Medicine, University Hospital Bonn, Bonn, Germany
- ⁵³Department of Anesthesia & Neurointensive Care, Cambridge University Hospital NHS Foundation Trust, Cambridge, UK.
- ⁵⁴School of Public Health & PM, Monash University and The Alfred Hospital, Melbourne, Victoria, Australia
- ⁵⁵Radiology/MRI department, MRC Cognition and Brain Sciences Unit, Cambridge, UK
- ⁵⁶Institute of Medical Psychology and Medical Sociology, Universitätsmedizin Göttingen, Göttingen, Germany
- ⁵⁷Oxford University Hospitals NHS Trust, Oxford, UK
- ⁵⁸Intensive Care Unit, CHU Poitiers, Poitiers, France
- ⁵⁹University of Manchester NIHR Biomedical Research Centre, Critical Care Directorate, Salford Royal Hospital NHS Foundation Trust, Salford, UK
- ⁶⁰Movement Science Group, Faculty of Health and Life Sciences, Oxford Brookes University, Oxford, UK
- ⁶¹Department of Neurosurgery, Antwerp University Hospital, Edegem, Belgium
- ⁶²Department of Anesthesia & Intensive Care, Maggiore Della Carità Hospital, Novara, Italy
- ⁶³Department of Neurosurgery, University Hospitals Leuven, Leuven, Belgium
- ⁶⁴Department of Neurosurgery, Clinical centre of Vojvodina, Faculty of Medicine, University of Novi Sad, Novi Sad, Serbia
- ⁶⁵Division of Anaesthesia, University of Cambridge, Addenbrooke's Hospital, Cambridge, UK
- ⁶⁶Center for Stroke Research Berlin, Charité – Universitätsmedizin Berlin, corporate member of Freie Universität Berlin, Humboldt-Universität zu Berlin, and Berlin Institute of Health, Berlin, Germany
- ⁶⁷Intensive Care Unit, CHR Citadelle, Liège, Belgium
- ⁶⁸Department of Anaesthesiology and Intensive Therapy, University of Pécs, Pécs, Hungary
- ⁶⁹Departments of Neurology, Clinical Neurophysiology and Neuroanesthesiology, Region Hovedstaden Rigshospitalet, Copenhagen, Denmark
- ⁷⁰National Institute for Stroke and Applied Neurosciences, Faculty of Health and Environmental Studies, Auckland University of Technology, Auckland, New Zealand
- ⁷¹Department of Neurology, Erasmus MC, Rotterdam, the Netherlands
- ⁷²Department of Anesthesiology and Intensive care, University Hospital Northern Norway, Tromsø, Norway
- ⁷³Department of Neurosurgery, Hadassah-hebrew University Medical center, Jerusalem, Israel
- ⁷⁴Fundación Instituto Valenciano de Neurorehabilitación (FIVAN), Valencia, Spain
- ⁷⁵Department of Neurosurgery, Shanghai Renji hospital, Shanghai Jiaotong University/school of medicine, Shanghai, China
- ⁷⁶Karolinska Institutet, INCF International Neuroinformatics Coordinating Facility, Stockholm, Sweden
- ⁷⁷Emergency Department, CHU, Liège, Belgium
- ⁷⁸Neurosurgery clinic, Pauls Stradins Clinical University Hospital, Riga, Latvia
- ⁷⁹Department of Computing, Imperial College London, London, UK
- ⁸⁰Department of Neurosurgery, Hospital Universitario 12 de Octubre, Madrid, Spain
- ⁸¹Department of Anesthesia, Critical Care and Pain Medicine, Medical University of Vienna, Austria
- ⁸²Department of Public Health, Erasmus Medical Center-University Medical Center, Rotterdam, The Netherlands
- ⁸³College of Health and Medicine, Australian National University, Canberra, Australia
- ⁸⁴Department of Neurosurgery, Neurosciences Centre & JPN Apex trauma centre, All India Institute of Medical Sciences, New Delhi-110029, India
- ⁸⁵Department of Neurosurgery, Erasmus MC, Rotterdam, the Netherlands
- ⁸⁶Division of Psychology, University of Stirling, Stirling, UK
- ⁸⁷Division of Neurosurgery, Department of Clinical Neurosciences, Addenbrooke's Hospital & University of Cambridge, Cambridge, UK.
- ⁸⁸Neurointensive Care, Sheffield Teaching Hospitals NHS Foundation Trust, Sheffield, UK
- ⁸⁹Salford Royal Hospital NHS Foundation Trust Acute Research Delivery Team, Salford, UK
- ⁹⁰Department of Intensive Care and Department of Ethics and Philosophy of Medicine, Erasmus Medical Center, Rotterdam, The Netherlands
- ⁹¹Department of Clinical Neuroscience, Neurosurgery, Umeå University, Umeå, Sweden.
- ⁹²Hungarian Brain Research Program - Grant No. KTIA_13_NAP-A-II/8, University of Pécs, Pécs, Hungary
- ⁹³Department of Anaesthesiology, University Hospital of Aachen, Aachen, Germany
- ⁹⁴Cyclotron Research Center, University of Liège, Liège, Belgium
- ⁹⁵Centre for Urgent and Emergency Care Research (CURE), Health Services Research Section, School of Health and Related Research (SCHARR), University of Sheffield, Sheffield, UK
- ⁹⁶Emergency Department, Salford Royal Hospital, Salford UK
- ⁹⁷Institute of Research in Operative Medicine (IFOM), Witten/Herdecke University, Cologne, Germany
- ⁹⁸VP Global Project Management CNS, ICON, Paris, France
- ⁹⁹Department of Anesthesiology-Intensive Care, Lille University Hospital, Lille, France
- ¹⁰⁰Department of Neurosurgery, Rambam Medical Center, Haifa, Israel
- ¹⁰¹Department of Anesthesiology & Intensive Care, University Hospitals Southampton NHS Trust, Southampton, UK
- ¹⁰²Department of Translational Neuroscience, Faculty of Medicine and Health Science, University of Antwerp, Antwerp, Belgium
- ¹⁰³Cologne-Merheim Medical Center (CMMC), Department of Traumatology, Orthopedic Surgery and Sportmedicine, Witten/Herdecke University, Cologne, Germany
- ¹⁰⁴Intensive Care Unit, Southmead Hospital, Bristol, Bristol, UK
- ¹⁰⁵Department of Neurological Surgery, University of California, San Francisco, California, USA
- ¹⁰⁶Department of Anesthesia & Intensive Care, M. Bufalini Hospital, Cesena, Italy
- ¹⁰⁷Department of Neurosurgery, University Hospital Heidelberg, Heidelberg, Germany
- ¹⁰⁸Department of Neurosurgery, The Walton centre NHS Foundation Trust, Liverpool, UK
- ¹⁰⁹Department of Medical Genetics, University of Pécs, Pécs, Hungary
- ¹¹⁰Department of Neurosurgery, Emergency County Hospital Timisoara, Timisoara, Romania
- ¹¹¹School of Medical Sciences, Örebro University, Örebro, Sweden.
- ¹¹²Institute for Molecular Medicine Finland, University of Helsinki, Helsinki, Finland
- ¹¹³Analytic and Translational Genetics Unit, Department of Medicine; Psychiatric & Neurodevelopmental Genetics Unit, Department of Psychiatry; Department of Neurology, Massachusetts General Hospital, Boston, MA, USA
- ¹¹⁴Program in Medical and Population Genetics; The Stanley Center for Psychiatric Research, The Broad Institute of MIT and Harvard, Cambridge, MA, USA
- ¹¹⁵Department of Radiology, University of Antwerp, Edegem, Belgium
- ¹¹⁶Department of Anesthesiology & Intensive Care, University Hospital of Grenoble, Grenoble, France
- ¹¹⁷Department of Anesthesia & Intensive Care, Azienda Ospedaliera Università di Padova, Padova, Italy
- ¹¹⁸Dept. of Neurosurgery, Leiden University Medical Center, Leiden, The Netherlands and Dept. of Neurosurgery, Medical Center Haaglanden, The Hague, The Netherlands
- ¹¹⁹Department of Neurosurgery, Helsinki University Central Hospital
- ¹²⁰Division of Clinical Neurosciences, Department of Neurosurgery and Turku Brain Injury Centre, Turku University Hospital and University of Turku, Turku, Finland
- ¹²¹Department of Anesthesiology and Critical Care, Pitié -Salpêtrière Teaching Hospital, Assistance Publique, Hôpitaux de Paris and University Pierre et Marie Curie, Paris, France
- ¹²²Neurotraumatology and Neurosurgery Research Unit (UNINN), Vall d'Hebron Research Institute, Barcelona, Spain
- ¹²³Department of Neurosurgery, Kaunas University of technology and Vilnius University, Vilnius, Lithuania
- ¹²⁴Department of Neurosurgery, Rezekne Hospital, Latvia
- ¹²⁵Department of Anaesthesia, Critical Care & Pain Medicine NHS Lothian & University of Edinburgh, Edinburgh, UK

¹²⁶Director, MRC Biostatistics Unit, Cambridge Institute of Public Health, Cambridge, UK

¹²⁷Division of Orthopedics, Oslo University Hospital, Oslo, Norway

¹²⁸Institute of Clinical Medicine, Faculty of Medicine, University of Oslo, Oslo, Norway

¹²⁹Broad Institute, Cambridge MA Harvard Medical School, Boston MA, Massachusetts General Hospital, Boston MA, USA

¹³⁰National Trauma Research Institute, The Alfred Hospital, Monash University, Melbourne, Victoria, Australia

¹³¹Department of Neurosurgery, Odense University Hospital, Odense, Denmark

¹³²International Neurotrauma Research Organisation, Vienna, Austria

¹³³Klinik für Neurochirurgie, Klinikum Ludwigsburg, Ludwigsburg, Germany

¹³⁴Division of Biostatistics and Epidemiology, Department of Preventive Medicine, University of Debrecen, Debrecen, Hungary

¹³⁵Department Health and Prevention, University Greifswald, Greifswald, Germany

¹³⁶Department of Anaesthesiology and Intensive Care, AUVA Trauma Hospital, Salzburg, Austria

¹³⁷Department of Neurology, Elisabeth-TweeSteden Ziekenhuis, Tilburg, the Netherlands

¹³⁸Department of Neuroanesthesia and Neurointensive Care, Odense University Hospital, Odense, Denmark

¹³⁹Department of Neuromedicine and Movement Science, Norwegian University of Science and Technology, NTNU, Trondheim, Norway

¹⁴⁰Department of Neurosurgery, University of Pécs, Pécs, Hungary

¹⁴¹Division of Neuroscience Critical Care, John Hopkins University School of Medicine, Baltimore, USA

¹⁴²Department of Neuropathology, Queen Elizabeth University Hospital and University of Glasgow, Glasgow, UK

¹⁴³Dept. of Department of Biomedical Data Sciences, Leiden University Medical Center, Leiden, The Netherlands

¹⁴⁴Department of Pathophysiology and Transplantation, Milan University, and Neuroscience ICU, Fondazione IRCCS Cà Granda Ospedale Maggiore Policlinico, Milano, Italy

¹⁴⁵Department of Radiation Sciences, Biomedical Engineering, Umeå University, Umeå, Sweden.

¹⁴⁶Perioperative Services, Intensive Care Medicine and Pain Management, Turku University Hospital and University of Turku, Turku, Finland

¹⁴⁷Department of Neurosurgery, Kaunas University of Health Sciences, Kaunas, Lithuania

¹⁴⁸Intensive Care and Department of Pediatric Surgery, Erasmus Medical Center, Sophia Children's Hospital, Rotterdam, The Netherlands

¹⁴⁹Department of Neurosurgery, Kings college London, London, UK

¹⁵⁰Neurologie, Neurochirurgie und Psychiatrie, Charité – Universitätsmedizin Berlin, Berlin, Germany

¹⁵¹Department of Intensive Care Adults, Erasmus MC– University Medical Center Rotterdam, Rotterdam, the Netherlands.

¹⁵²icoMetrix NV, Leuven, Belgium

¹⁵³Movement Science Group, Faculty of Health and Life Sciences, Oxford Brookes University, Oxford, UK

¹⁵⁴Radiology Department, Antwerp University Hospital, Edegem, Belgium

¹⁵⁵Director of Neurocritical Care, University of California, Los Angeles, USA

¹⁵⁶Department of Neurosurgery, St.Olavs Hospital, Trondheim University Hospital, Trondheim, Norway

¹⁵⁷Department of Emergency Medicine, University of Florida, Gainesville, Florida, USA

¹⁵⁸Department of Neurosurgery, Charité – Universitätsmedizin Berlin, corporate member of Freie Universität Berlin, Humboldt-Universität zu Berlin, and Berlin Institute of Health, Berlin, Germany.

¹⁵⁹VTT Technical Research Centre, Tampere, Finland.

¹⁶⁰Section of Neurosurgery, Department of Surgery, Rady Faculty of Health Sciences, University of Manitoba, Winnipeg, MB, Canada

Author's contributions

All authors have contributed substantially to the work reported. All authors critically revised the paper. Conceptualization, E.I.H., N.A., T.H.; Data curation, E.I.H., M.Z.; Formal analysis, E.I.H., C.B.; Methodology, E.I.H., N.A., T.H.; Visualization, E.I.H., N.A.; Writing-original draft, E.I.H., N.A., C.B., T.H.; Writing-review and editing, E.I.H., N.A., C.B., M.Z., E.H., T.S., A.O., S.C.R.F., A.T., K.R., B.Å.M., B.J., J.v.d.N.,

M.C.T., C.E.E., G.S., E.T., C.T., N.v.S., C.R., T.H. All authors have read and agreed to the published version of the manuscript.

Funding

Open access funding provided by University of Oslo (incl Oslo University Hospital) CENTER-TBI was supported by the European Union 7th Framework programme (EC grant 602150). Additional funding was obtained from the Hannelore Kohl Stiftung (Germany), from OneMind (USA), and from Integra LifeSciences Corporation (USA). The funders of the study had no role in study design, data collection, data analysis, data interpretation, or writing of the report.

Availability of data and materials

The datasets generated and/or analysed during the current study are not publicly available, but are available from the corresponding author on reasonable request.

Declarations

Ethics approval and consent to participate

The CENTER-TBI study (EC grant 602150) was conducted in accordance with all relevant laws of the European Union (EU) and all relevant laws of the countries where the recruiting sites were located. Informed consent was obtained from the patients and/or the legal representative/next of kin, according to the local regulations for all participants recruited in the Core Dataset of CENTER-TBI and documented in the electronic case report form (e-CRF). For the full list of sites, ethical committees, and ethical approval details, see the official CENTER-TBI website (<https://www.center-tbi.eu/project/ethical-approval>). The trial was registered at the US National Institutes of Health (ClinicalTrials.gov) #NCT0221022.

Consent for publication

Not applicable.

Competing interests

E.T. received personal lecture fees or served on advisory boards for Novartis, Eli Lilly, Abbvie, TEVA, Roche, Lundbeck, Pfizer, Biogen. He also served as consultant for and owner of stocks and IP in Man & Science. Stocks and IP in Nordic Brain Tech. Stocks in Keimon Medical. Commissioned research (non-personal): Lundbeck, Pfizer. A.O. is a co-founder and owner of Nordic Brain Tech AS. For the other authors, no competing financial interests exist.

Author details

¹Department of Physical Medicine and Rehabilitation, Oslo University Hospital, Oslo, Norway. ²Center for Habilitation and Rehabilitation Models and Services (CHARM), Institute of Health and Society, University of Oslo, Oslo, Norway. ³Oslo Centre for Biostatistics and Epidemiology, Oslo University Hospital, Oslo, Norway. ⁴Institute of Psychology, University of Innsbruck, Innsbruck, Austria. ⁵Institute of Clinical Medicine, Faculty of Medicine, University of Oslo, Oslo, Norway. ⁶Department of Neurosurgery, Division of Emergencies and Critical Care, Department of Research and Development, Oslo University Hospital, Oslo, Norway. ⁷Department of Neuromedicine and Movement Science, NTNU - Norwegian University of Science and Technology, Trondheim, Norway. ⁸Clinic of Rehabilitation, St. Olavs Hospital, Trondheim University Hospital, Trondheim, Norway. ⁹NorHEAD - Norwegian Centre for Headache Research, Trondheim, Norway. ¹⁰Department of Psychology, Norwegian University of Science and Technology, Trondheim, Norway. ¹¹TBI Network, Department of Psychology, Faculty of Health and Environmental Sciences, Auckland University of Technology, Auckland, New Zealand. ¹²Neurological Rehabilitation Center Godeshöhe, Bonn, Germany. ¹³Department of Traumatology & Department of Psychiatry, Psychotherapy, and Psychosomatics, Neuroscience Center Zurich, University of Zurich, University Hospital Zurich, Zürich, Switzerland. ¹⁴Institute for Stroke and Dementia Research (ISD), University Hospital, Ludwig Maximilian University of Munich, Munich, Germany. ¹⁵Department of Neurology, University of Groningen, University Medical Center Groningen, Groningen, The Netherlands. ¹⁶Tanz Centre for Research in Neurodegenerative Diseases, University of Toronto, Toronto, ON, Canada. ¹⁷Canadian Concussion Centre, Krembil Brain Institute, Toronto, ON, Canada. ¹⁸Memory Clinic, Toronto Western Hospital, Toronto, ON, Canada. ¹⁹Department of Neurology, St. Olav University Hospital, Trondheim, Norway.

Received: 16 February 2024 Accepted: 15 March 2024
Published online: 25 March 2024

References

- Dikmen S, Machamer J, Fann JR, Temkin NR (2010) Rates of symptom reporting following traumatic brain injury. *J Int Neuropsychol Soc* 16(3):401–411
- Headache Classification Committee of the International Headache Society (IHS) (2018) The International Classification of Headache Disorders. *Cephalalgia* 38(1):1–211
- Lucas S, Hoffman JM, Bell KR, Dikmen S (2014) A prospective study of prevalence and characterization of headache following mild traumatic brain injury. *Cephalalgia* 34(2):93–102
- Defrin R (2014) Chronic post-traumatic headache: clinical findings and possible mechanisms. *J Man Manip Ther* 22(1):36–44
- Hoffman JM, Lucas S, Dikmen S, Braden CA, Brown AW, Brunner R et al (2011) Natural history of headache after traumatic brain injury. *J Neurotrauma* 28(9):1719–1725
- Ashina H, Dodick DW, Barber J, Temkin NR, Chong CD, Adler JS et al (2023) Prevalence of and Risk Factors for Post-traumatic Headache in Civilian Patients After Mild Traumatic Brain Injury: A TRACK-TBI Study. *Mayo Clin Proc* 98(10):1515–1526
- Couch JR, Bearss C (2001) Chronic daily headache in the posttrauma syndrome: relation to extent of head injury. *Headache* 41(6):559–564
- Nampiaparampil DE (2008) Prevalence of chronic pain after traumatic brain injury: a systematic review. *JAMA* 300(6):711–719
- Nordhaug LH, Hagen K, Vik A, Stovner LJ, Follstad T, Pedersen T et al (2018) Headache following head injury: a population-based longitudinal cohort study (HUNT). *J Headache Pain* 19(1):8
- Walker WC, Seel RT, Curtiss G, Warden DL (2005) Headache after moderate and severe traumatic brain injury: a longitudinal analysis. *Arch Phys Med Rehabil* 86(9):1793–1800
- Nordhaug LH, Linde M, Follstad T, Skandsen ØN, Bjørkø VV, Skandsen T, Vik A (2019) Change in Headache Suffering and Predictors of Headache after Mild Traumatic Brain Injury: A Population-Based, Controlled, Longitudinal Study with Twelve-Month Follow-Up. *J Neurotrauma* 36(23):3244–3252
- Flynn S, Moore B, van der Merwe AJ, Moses A, Lo J, Shahim P, Chan L (2023) Headaches in Traumatic Brain Injury: Improvement Over Time, Associations With Quality of Life, and Impact of Migraine-Type Headaches. *J Head Trauma Rehabil* 38(2):E109–E117
- Hong CK, Joo JY, Shim YS, Sim SY, Kwon MA, Kim YB, Chung J (2017) The course of headache in patients with moderate-to-severe headache due to mild traumatic brain injury: a retrospective cross-sectional study. *J Headache Pain* 18(1):48
- Walker WC, Marwitz JH, Wilk AR, Ketchum JM, Hoffman JM, Brown AW, Lucas S (2013) Prediction of headache severity (density and functional impact) after traumatic brain injury: A longitudinal multicenter study. *Cephalalgia* 33(12):998–1008
- Voormolen DC, Haagsma JA, Polinder S, Maas AIR, Steyerberg EW, Vuleković P, et al. Post-Concussion Symptoms in Complicated vs. Uncomplicated Mild Traumatic Brain Injury Patients at Three and Six Months Post-Injury: Results from the CENTER-TBI Study. *Journal of clinical medicine*. 2019;8(11).
- Yilmaz T, Roks G, de Koning M, Scheenen M, van der Horn H, Plas G et al (2017) Risk factors and outcomes associated with post-traumatic headache after mild traumatic brain injury. *Emerg Med J* 34(12):800–805
- Nestvold K, Lunder T, Mowinckel P, Stavem K (2005) Predictors of headache 22 years after hospitalization for head injury. *Acta Neurol Scand* 112(1):13–18
- Bomyea J, Lang AJ, Delano-Wood L, Jak A, Hanson KL, Sorg S et al (2016) Neuropsychiatric Predictors of Post-Injury Headache After Mild-Moderate Traumatic Brain Injury in Veterans. *Headache* 56(4):699–710
- Chan TLH, Woldeamanuel YW (2020) Exploring naturally occurring clinical subgroups of post-traumatic headache. *J Headache Pain* 21(1):12
- Ashina H, Al-Khazali HM, Iljazi A, Ashina S, Amin FM, Lipton RB, Schytz HW (2021) Psychiatric and cognitive comorbidities of persistent post-traumatic headache attributed to mild traumatic brain injury. *J Headache Pain* 22(1):83
- Ashina H, Iljazi A, Amin FM, Ashina M, Lipton RB, Schytz HW (2020) Interrelations between migraine-like headache and persistent post-traumatic headache attributed to mild traumatic brain injury: a prospective diary study. *J Headache Pain* 21(1):134
- Quaid PT, Singman EL (2022) Post-traumatic headaches and vision: A review. *NeuroRehabilitation* 50(3):297–308
- Calhoun AH, Ford S, Millen C, Finkel AG, Truong Y, Nie Y (2010) The prevalence of neck pain in migraine. *Headache* 50(8):1273–1277
- Cohen SP, Kapoor SG, Nguyen C, Anderson-Barnes VC, Brown C, Schiffer D et al (2010) Neck pain during combat operations: an epidemiological study analyzing clinical and prognostic factors. *Spine* 35(7):758–763
- Lampl C, Rudolph M, Deligianni CI, Mitsikostas DD (2015) Neck pain in episodic migraine: premonitory symptom or part of the attack? *J Headache Pain* 16:566
- Shahidi B, Bursch RW, Carmel JS, Carranza AC, Cooper KM, Lee JV et al (2021) Greater Severity and Functional Impact of Post-traumatic Headache in Veterans With Comorbid Neck Pain Following Traumatic Brain Injury. *Mil Med* 186(11–12):1207–1214
- Ashina H, Eigenbrodt AK, Seifert T, Sinclair AJ, Scher AI, Schytz HW et al (2021) Post-traumatic headache attributed to traumatic brain injury: classification, clinical characteristics, and treatment. *The Lancet Neurology* 20(6):460–469
- Maas AI, Menon DK, Steyerberg EW, Citerio G, Lecky F, Manley GT et al (2015) Collaborative European NeuroTrauma Effectiveness Research in Traumatic Brain Injury (CENTER-TBI): a prospective longitudinal observational study. *Neurosurgery* 76(1):67–80
- Teasdale G, Jennett B (1974) Assessment of coma and impaired consciousness. A practical scale *Lancet* 2(7872):81–84
- Gennarelli TA, Wodzin E (2006) AIS 2005: a contemporary injury scale. *Injury* 37(12):1083–1091
- Baker SP, O'Neill B, Haddon W Jr, Long WB (1974) The injury severity score: a method for describing patients with multiple injuries and evaluating emergency care. *J Trauma* 14(3):187–196
- Mayhew D, Mendonca V, Murthy BVS (2019) A review of ASA physical status - historical perspectives and modern developments. *Anaesthesia* 74(3):373–379
- King NS, Crawford S, Wenden FJ, Moss NE, Wade DT (1995) The Rivermead Post Concussion Symptoms Questionnaire: a measure of symptoms commonly experienced after head injury and its reliability. *J Neurol* 242(9):587–592
- Balalla S, Krägeloh C, Medvedev O, Siegert R (2020) Is the Rivermead Post-Concussion Symptoms Questionnaire a Reliable and Valid Measure to Assess Long-Term Symptoms in Traumatic Brain Injury and Orthopedic Injury Patients? A Novel Investigation Using Rasch Analysis. *Neurotrauma Rep* 1(1):63–72
- Lannsjö M, Borg J, Björklund G, Af Geijerstam JL, Lundgren-Nilsson A (2011) Internal construct validity of the Rivermead Post-Concussion Symptoms Questionnaire. *Journal of rehabilitation medicine : official journal of the UEMS European Board of Physical and Rehabilitation Medicine* 43(11):997–1002
- Crichton A, Anderson V, Oakley E, Greenham M, Hearn S, Delzoppo C et al (2018) Fatigue Following Traumatic Brain Injury in Children and Adolescents: A Longitudinal Follow-Up 6 to 12 Months After Injury. *J Head Trauma Rehabil* 33(3):200–209
- White IR, Royston P, Wood AM (2011) Multiple imputation using chained equations: Issues and guidance for practice. *Stat Med* 30(4):377–399
- van der Naalt J, Timmerman ME, de Koning ME, van der Horn HJ, Scheenen ME, Jacobs B et al (2017) Early predictors of outcome after mild traumatic brain injury (UPFRONT): an observational cohort study. *The Lancet Neurology* 16(7):532–540
- Lambru G, Benemei S, Andreou AP, Luciani M, Serafini G, van den Brink AM, Martelletti P (2021) Position Paper on Post-Traumatic Headache: The Relationship Between Head Trauma, Stress Disorder, and Migraine. *Pain Ther* 10(1):1–13
- Lahz S, Bryant RA (1996) Incidence of chronic pain following traumatic brain injury. *Arch Phys Med Rehabil* 77(9):889–891
- Rosner J, de Andrade DC, Davis KD, Gustin SM, Kramer JLK, Seal RP, Finnerup NB (2023) Central neuropathic pain. *Nat Rev Dis Primers* 9(1):73
- Coffman C, Reyes D, Hess MC, Giakas AM, Thiam M, Sico JJ et al (2022) Relationship Between Headache Characteristics and a Remote History

- of TBI in Veterans: A 10-Year Retrospective Chart Review. *Neurology* 99(2):e187–e198
43. Shih PK, Chen JX, Yang WC, Muo CH, Wu SC (2022) Risk of Subsequent Migraines in Facial Fracture Patients: A Population-Based Cohort Study. *Facial Plast Surg Aesthet Med* 24(1):41–47
 44. Molla YD, Alemu HT, Kassa SA, Gebrehana DA, Abera SA, Tebeje HE, Demise AG (2024) Magnitude of dural tear and its associated factors among patients with depressed skull fracture. *Ann Med Surg (Lond)* 86(1):133–138
 45. Labastida-Ramírez A, Benemei S, Albanese M, D'Amico A, Grillo G, Grosu O et al (2020) Persistent post-traumatic headache: a migrainous loop or not? The clinical evidence. *J Headache Pain* 21(1):55
 46. Schwedt TJ, Chong CD, Peplinski J, Ross K, Berisha V (2017) Persistent post-traumatic headache vs. migraine: an MRI study demonstrating differences in brain structure. *J Headache Pain* 18(1):87
 47. Herisson F, Frodermann V, Courties G, Rohde D, Sun Y, Vandroornik K et al (2018) Direct vascular channels connect skull bone marrow and the brain surface enabling myeloid cell migration. *Nat Neurosci* 21(9):1209–1217
 48. Kuburas A, Russo AF (2023) Shared and independent roles of CGRP and PACAP in migraine pathophysiology. *J Headache Pain* 24(1):34
 49. Edvinsson L, Grell AS, Warfvinge K (2020) Expression of the CGRP Family of Neuropeptides and their Receptors in the Trigeminal Ganglion. *J Mol Neurosci* 70(6):930–944
 50. Ashina H, Iljazi A, Al-Khazali HM, Christensen CE, Amin FM, Ashina M, Schytz HW (2020) Hypersensitivity to Calcitonin Gene-Related Peptide in Post-Traumatic Headache. *Ann Neurol* 88(6):1220–1228
 51. Al-Khazali HM, Christensen RH, Dodick DW, Chaudhry BA, Amin FM, Burstein R, Ashina H (2023) Hypersensitivity to PACAP-38 in post-traumatic headache: a randomized clinical trial. *Brain*
 52. Russo AF, Hay DL (2023) CGRP physiology, pharmacology, and therapeutic targets: migraine and beyond. *Physiol Rev* 103(2):1565–1644
 53. Russell FA, King R, Smillie SJ, Kodji X, Brain SD (2014) Calcitonin gene-related peptide: physiology and pathophysiology. *Physiol Rev* 94(4):1099–1142
 54. Al-Khazali HM, Christensen RH, Dodick DW, Chaudhry BA, Burstein R, Ashina H (2023) Hypersensitivity to opening of ATP-sensitive potassium channels in post-traumatic headache. *Cephalalgia* 43(11):3331024231210930
 55. Sutton M, Chan V, Escobar M, Mollayeva T, Hu Z, Colantonio A (2019) Neck Injury Comorbidity in Concussion-Related Emergency Department Visits: A Population-Based Study of Sex Differences Across the Life Span. *J Womens Health (Larchmt)* 28(4):473–482
 56. Kennedy E, Quinn D, Chapple C, Tumilty S (2019) Can the Neck Contribute to Persistent Symptoms Post Concussion? A Prospective Descriptive Case Series. *J Orthop Sports Phys Ther* 49(11):845–854
 57. Côté P, Yu H, Shearer HM, Randhawa K, Wong JJ, Mior S et al (2019) Non-pharmacological management of persistent headaches associated with neck pain: A clinical practice guideline from the Ontario protocol for traffic injury management (OPTiMa) collaboration. *Eur J Pain* 23(6):1051–1070
 58. Yalinay Dikmen P, Ozge A, Martelletti P (2023) The use of clinical scales and PROMs in headache disorders and migraine, summarizing their dissemination and operationalization. *Heliyon* 9(5):e16187
 59. Steiner TJ, Stovner LJ (2023) Global epidemiology of migraine and its implications for public health and health policy. *Nat Rev Neurol* 19(2):109–117

Publisher's Note

Springer Nature remains neutral with regard to jurisdictional claims in published maps and institutional affiliations.