



Promoting Diverse Abilities Across the Lifespan



Director's Corner

Dr. Lauren Lum Ho
CDS Interim Director

Welcome to the March 2024 issue of the CDS Quarterly eNewsletter. Join us in celebrating a Developmental Disability Awareness Month (DDAM) and recapping our 39th Annual Pacific Rim International Conference on Disability and Diversity. This issue includes special features that include:

- DD Council Day at the Capitol
- CDS Annual Report (FY 2023)
- CDS Project Highlights and Events

Legacy Project	02
2023 Annual Report	03
DD Council Day at the Capitol 2024 Recap	04
Summer Camp (due 4/7) Hōkūlani CLD TEAMS	07
HFEC Self-Paced Trainings (3/12-9/30) & news	09
SPIN 2024 Conference	11
Yin Yue - Visiting Scholar	13
14 Years Later - Project Ho'oku'i	15
Wellness Matters Program	19
Employment First Summit Recap	23
#PacRim2024 Highlights	25
Joshua Crafford Recording	33



FEATURED ARTIST

Annie Moriyasu

Make Art, Change Lives! Founder

In celebration of the 2024 new year, we feature power, strength, courage good luck and protection through Annie Moriyasu's signature Chinese-Hawaiian *hapa* dragons!!



CDS LEGACY WALL



By Dr. Robert Stodden, Founding Director,
Professor Emeritus/International
Ambassador, stodden@hawaii.edu

As many of you know, CDS has a long and successful history working in the field of disability studies, starting in 1987 with the coming together of a grant writing team to apply for what was then referred to as a University Affiliated Program (UAP), now known as the University Centers for Excellence on Developmental Disability (UCEDD).

Over the years, there have been many highly recognized persons aligned with CDS programs/projects, as well as many graduate students mentored by faculty and staff at CDS and who have become important contributors in the field of disability studies.



“ This project is a very small effort to capture this history and document it in segments related to the important work undertaken and the outcomes and impacts made over the years.

So far, a small group of persons have started to think this through including: myself, Yin Yue, Visiting Scholar, Genesis Leong, Raphael Raphael. If you would like to partake in the project, or if have or know of documents, multimedia (photos, videos, graphics) or information that would assist with this project, please email or contact any of the above persons. Thank you.



2023 ANNUAL REPORT



Fiscal Year 2023

July 1, 2022 - June 30, 2023



Annual Report

Hawai'i's University Center
for Excellence In
Developmental Disabilities
Education, Research, and
Service (HI UCEDD)



A WORLD OF POSSIBILITIES



**Hawaii State Council on
Developmental Disabilities**

By Genesis Leong, genesisl@hawaii.edu



Photo - Welcoming ceremony in the Capitol chamber room, Photo credit Craig T. Kojima, Star Advertiser.

On March 7, 2024, advocates from across the state celebrated “A World of Possibilities” as the 2024 Day at the Capitol event theme. The purpose of the event is to foster inclusivity, empower voices and promote awareness about the rights and needs of those with developmental disabilities, as well as Alzheimer’s disease and dementia-related conditions.

Advocates participated in meetings with lawmakers, observed legislative sessions in the house and senate, and contributed to the following policy priorities led by Community & Legislative Liaison Che Silvert.

Hawaii ABLÉ Savings Program - HB2556

Amends the sources of funding for the Hawai'i ABLÉ Saving Program Trust Fund, making savings more accessible for individuals with IDD.



ABLE Savings provides individuals with disabilities flexible savings accounts for expenses such as medical care, education, and housing. Parents can save for their child's future without jeopardizing Medicaid eligibility. Transition to adulthood, providing them with resources for employment, housing, and a better quality of life.



Relating to Social Services - SB849/HB1974

Funds federal supplemental security income (SSI) to increase the Personal Needs Allowance (PNA).

PNA allows individuals living in long-term care facilities to make personal purchases, promoting self-determination. Parents can save for their child's future without jeopardizing Medicaid eligibility. Empowers individuals with IDD to participate in acts of self-determination, money management skills, and decision-making processes.

Relating to Equity - SB2503

Requires all places of public accommodation constructed after 12/31/24 to provide universal changing accommodations that are equally accessible regardless of gender.



Equitable Access is crucial for ensuring equitable access to essential facilities for individuals with disabilities. Significant step towards achieving equity in access to public accommodations for all members of the community. This will alleviate the burden on families and caregivers, promoting inclusion and integration



HAWAI'I BROADBAND AND DIGITAL EQUITY - SB1231

Establishes the Digital Equity Grant Program and facilitates digital equity projects

Supports the development of broadband infrastructure for underserved communities. Provides broadband equity increases access to and affordability of digital resources. Our population relies on telehealth services, and benefit from increased access to high-speed internet and improved broadband equity.

Office of Elections - HB1976

Requires the Office of Elections to annually request funding for the Statewide Elections Accessibility Needs Advisory Committee.



Our population relies on access to digital technology which promotes community engagement. The role of the advisory committee is to work to enhance accessibility for voters with disabilities. Funding is important because the current lack of funding is insufficient for increasing accessibility for voters with disabilities throughout the voting process. The Americans with Disabilities Act mandates that state and local governments ensure people w/ disabilities have equal opportunity to vote in all elections.

PEER SUPPORT SPECIALISTS - SB3094

Establishes a working group to create a statewide framework for peer support specialists.

Trauma-informed care is crucial for individuals with developmental disabilities navigating systems like Child Welfare Services (CWS). It recognizes the impact of trauma on individuals' lives and prioritizes safety, trust, and empowerment. For organizations, bringing trauma-informed care and peer-to-peer support into organizations like Kids Hurt Too Hawai'i is essential. This can make a significant difference in nurturing healing and resilience, even in the face of tough challenges.

SUMMER CAMP RECRUITMENT



**Hōkūlani-
CLD-TEAMS**

By Dr. Hye-Jin Park, Principal Investigator,
parkhye@hawaii.edu



Photo (left to right) Dr. Lisa Galloway (Lanaʻi), Loke Evans-Bautista (East Hawaiʻi Island), Kanani Wall (West Hawaiʻi Island), Jerrik Feliciano (Oʻahu-Honolulu), Robert Young (Oʻahu-North), & Dalen Kahiapo (Oʻahu-West).

This summer, four summer camps will be offered in different locations throughout the state. Sign-ups will be offered to incoming 7th to 9th graders, while all high schoolers are welcome to apply!!

Site coordinators from Hōkūlani CLD TEAMS aim to help middle and high school students explore their interests in science, technology, engineering and math (STEM) fields and consider entering into STEM programs after high school.

HŌKŪLANI CLD TEAMS

Summer Camp

What is Hōkūlani-CLD-TEAMS Program?

It is an educational research program funded by the U.S. Department of Education and run by the faculty and staff at the University of Hawai'i at Mānoa. Our goal is to help middle and high school students explore their interests in science, technology, engineering and math (STEM) fields and consider entering into STEM programs after high school.

In our program, students will:

- learn how STEM is all around us—in our daily lives, our home and our cultural practices
- explore 6 STEM areas through hands-on activities rooted in Hawaiian culture
- connect with different STEM careers, working professionals and college programs
- experience STEM up close through field trips to local STEM companies and university labs



Application
Online: go.hawaii.edu/aQn
Download: go.hawaii.edu/gQn

Application Deadline
Sunday, April 7

For more information,
contact ProjectH@hawaii.edu

SUMMER CAMP LOCATION & DATES

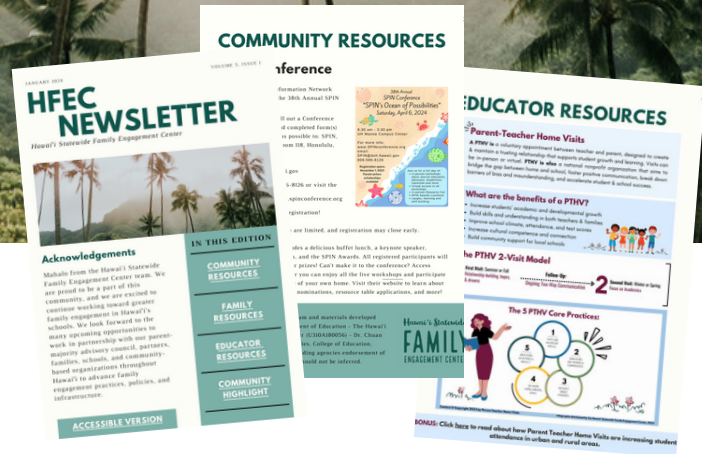
- O'ahu: July 8 - 17 at UH Mānoa Campus (40 students)
- East Hawai'i Island: June 3 - 7 at UH at Hilo (20 students)
- West Hawai'i Island: June 10 - 14 (*tentative*) at (*location to be determined*) (20 students)
- Lāna'i: June 10 - 19 at Lāna'i High & Elementary School (20 students)

Family Engagement TRAININGS & UPDATES



Hawai'i Statewide Family Engagement Center

By Genesis Leong, genesisl@hawaii.edu



Access Full Issue:

CLICK HERE



Dr. Chuan Chinn
Principal Investigator



Victoria Timmerman
Project Coordinator



Jordan Harden
Graduate Assistant

CONNECT WITH HFEC!



HFEC Website



HFEC YouTube



HFEC Facebook



Email HFEC



HFEC Instagram

NAFSCE - Reframing Academy

A 10-module asynchronous course for family leaders who want to learn effective ways to build support for family & community engagement

- * Access this course for **FREE** (\$100 value) through HFEC using the code: "HISFEC2"
- * Learners in this cohort are recommended to participate in four virtual meetings as they complete the online course. Between these meetings, participants will complete specific Academy modules. A certificate will be awarded upon completion of the course.
- * Course is open from March 12 to Sept 30, 2024. Self-paced.

Register Today
& use "HISFEC2"



go.hawaii.edu/bYn

Virtual Meeting Schedule

LEARNING BLOCK 1:

Introduction to Course

Tuesday, March 12, 2:30-4:00pm HST

LEARNING BLOCK 2:

Modules 1-3

Tuesday, April 2, 2:30-4:00pm HST

LEARNING BLOCK 3:

Modules 4-6

Tuesday, April 16, 2:30-4:00pm HST

LEARNING BLOCK 4:

Modules 7-10

Tuesday, April 30, 2:30-4:00pm HST

38TH ANNUAL SPIN CONFERENCE



special Parent Information
Network (SPIN)

By Genesis Leong, genesisl@hawaii.edu

Saturday, April 6, 2024




8:30am - 3:30pm

In-Person: UH Mānoa Campus Center OR Online: Zoom

REGISTER

www.SPINconference.org

The SPIN Conference includes a delicious buffet lunch, a keynote speaker, informative live workshops, and the SPIN Awards. But wait, there's more! All registered participants will be eligible for awesome door prizes! Can't make it to the conference? No problem! We've got you covered with a virtual option, where you can enjoy all the live workshops and participate in the fun from the comfort of your own home.

-  Neighbor Island 'Ohana Airfare Scholarships - Due March 20, 2024
-  Resource Fair Display Tables for our Community Partners!
-  Waves of Breakout Sessions - Checkout the program at <https://spinconference.org/2024-conference/>

38th Annual SPIN Conference

“SPIN’s Ocean of Possibilities” Saturday, April 6, 2024



8:30 am - 3:30 pm
UH Manoa Campus Center

For more info:
www.SPINconference.org

email: SPIN@doh.hawaii.gov
808-596-8126

Registration opens
November 1, 2023
Parent airfare
scholarships
available!

Join us for a full day of:

- In-person work workshops about special education, advocacy, disabilities, transition and more
- Virtual access to all workshops
- In-person Resource Fair
- SPIN Awards Luncheon
- Laughs, learning and skill building



WELCOMING YIN YUE

By Genesis Leong,
genesisl@hawaii.edu



Since the early 2000s, CDS has welcomed visiting scholars from across the globe to share, learn and build a breadth of knowledge and diversity to the CDS learning and research community.

This year we welcome Yin Yue, a psychological counselor and associate professor, teaching courses covering psychology and business. Yue shares experience in college student mental health education, consumer psychological behavior analysis, and new media operations. Contact Yin Yue at yinyue@hawaii.edu.



Photo - Yin Yue and son

INTERVIEW

Goals to accomplish while at CDS?

My main goal at the University of Hawai'i is to make new breakthroughs in the field of educating children with internet addiction and autism spectrum disorder in adolescents.

Collaboration and ways CDS can support your goals?

To be able to show viewpoints and research findings, while allowing me to participate more in practical project research. I hope to meet with CDS faculty and staff with Educational Psychology degrees and backgrounds to discuss programing.

First impressions of CDS' company culture?

CDS is a friendly and inclusive big family, where everyone seems loose, but is actually orderly. I mostly enjoy the friendliness and inclusiveness of CDS. When I first came to the United States, everything was unfamiliar to me. The faculty and staff at CDS gave me a lot of help, from small things in life to research projects, giving me the greatest kindness and assistance.



Photos - Yin during class instructions.

What do you enjoy about Hawaii?

I enjoy Hawaii's spring like climate, beautiful natural scenery, friendly and sincere relationships between people, reverence for God, and pursuit of knowledge. In the evening, I take my son to bicycling while enjoying the scenery along the way, or we like to go to Chinese restaurants to eat hometown cuisine.

Most memorable moments?

The most unforgettable moment was when on my first day in Hawai'i, my supervisor Bob went to the airport to pick me up. There were five bags of luggage and I didn't know anyone in a strange city. Bob drove a truck to pick me up, like an "angel "descending from the sky. It was so touching~



Photo - Yin and students.

14 YEARS LATER

Project Ho'oku'i's Impact on Hawai'i's Students

39th Pacific Rim International Conference on Disability and Diversity



*By Lisa Uyehara, Principal Investigator of
Project Ho'oku'i, uyeharal@hawaii.edu*



Photo (left to right) Dr. Caryl Hitchcock, Lisa Uyehara, & Dr. Kelly Roberts.

On February 28, 2024, three senior faculty, Lisa Uyehara, Caryl Hitchcock, and Kelly Roberts presented at the 39th annual Pacific Rim International Conference on Disability and Diversity. Uyehara, Hitchcock, and Roberts took a linear approach from when the project began in 2009 until the current time, and what lies ahead. Roberts, a former CDS Professor, is currently the Director of the Institute for Human Development at Northern Arizona University, and the founding principal investigator of Project Ho'oku'i. Roberts discussed why the project was started and the original intervention to support Native Hawaiian *na haumana* (students),

who are often first-generation college bound in their families. She was the principal investigator during the second iteration also, and expanded the project to include the islands of Maui, Hawai'i, Lānai, Moloka'i, and O'ahu.

In 2017,

Uyehara became the principal investigator and added the island of Kaua'i, making the project statewide.

As a graduate (student) assistant under the tutelage of Dr. Robert Stodden, founder of the Center on Disability Studies, it bothered her that when research projects ended, there was also a sudden halt to the research and progress made during the project. This fact was the catalyst that motivated Uyehara to write Project Ho'oku'i III: Na Kumu Alaka'i with a "train the trainer" intervention for Hawai'i Department of Education (HIDOE) high school teachers and counselors. Under project staff, teachers were trained through modules that changed monthly on how to prepare Native Hawaiian students for college utilizing the original intervention model and new curriculum that connected Native Hawaiian values, culture, and activities to academic subjects and college preparation.



Lisa Uyehara presenting.



Photo: Ho'oku'i Team & Educators

A PDE 3 class was also offered for HIDOE teachers to earn professional development credits for promotion. At this time the project was closely aligned with HIDOE's *Nā Hopena A'o* and Uyehara partnered with Hawai'inuiākea, School of Hawaiian Knowledge at the University of Hawai'i at Mānoa, directly working with Native Hawaiian Student Services.

Project Ho'oku'i continued to evolve, and in 2018, under Uyehara, Project Ho'oku'i IV: 'Ohana Lōkahi, was developed to include na haumana, teachers, and families. At this time, Hitchcock, a curriculum developer, and trainer in family engagement, with a strong background in psychology and a Ph.D. in education, developed the family engagement curriculum.

Continuing to utilize the original intervention model developed by Roberts, we trained families, HIDOE faculty, and na haumana through the module system via Zoom and utilizing Slack, a technology tool, to communicate with all involved statewide. The modules changed every six weeks and focused on five critical areas aligned with HIDOE's Nā Hopena A'ō framework. The five critical areas included: college preparation, nutrition, well-being (physical and mental), *Kanaka Maoli* (Native Hawaiian) culture, and family engagement.

Throughout the program the theme would change per module cycle, and consistently cover the five critical areas. Activities encouraged parents and their *nā keiki* (children) to engage with each other and open "academic conversations" for their keiki's future goals and plans. *Ha'awina* (homework) was collected at the end of each cycle. By meeting once through Zoom per cycle, families, students, project staff, and high school faculty were able to connect and share their *mana'o* (opinion) and learning, and ask questions.



Photo: Three students in cultural practice.

New Era of Growth



Photo: students exploring culture significance.

Throughout her experience as principal investigator during iterations III and IV, Uyehara realized that she was leaving out a demographic of the Native Hawaiian student population – gifted and talented students. Gifted and talented students often get overlooked in the classroom because of their grades. Continuing to serve at-risk, and students with disabilities, she developed a new component to the project, understanding and supporting the unique needs of gifted Native Hawaiian students that often suffer from cultural dissonance navigating back and forth from home to school and back home to their community.

Uyehara started small, with Project Ho'oku'i V: Kūlia i ka Nu'u, by offering 10 competitive scholarships and mentoring to high school students to begin their first semester at the University of Hawai'i at Mānoa. She also increased the number of college classes project students could take in a semester during high school.

As a result, in 2022, 14 high school students received their associate degrees prior to finishing high school. At the date of this publication, in May 2024, another 13 Farrington High School students will receive their A.A. degrees prior to graduating from high school. However, we anticipate more students will achieve this accomplishment from other project high schools as well.



Photos - four student graduation ceremonies across the state.

Project Ho'okui VI: E Ho'omau was funded at the end of 2023. The project will continue the original intervention, serving the same demographics of at-risk, students with disabilities, and Native Hawaiian students, but expand the gifted and talented student supports. Recognizing not all students want to enter a four-year university and due to the serious lack of skilled employees in Hawai'i, the post high school competitive scholarship, will be offered on a limited basis at the University of Hawai'i at Mānoa, the University of Hawai'i at Hilo, and all University of Hawai'i community college career, technical education (CTE) programs.

On the evolution of Project Ho'oku'i, the original principal investigator, Kelly Roberts said, "It is rewarding to see the progression of the project from the initial focus on students and their Ohana to being inclusive of educators and the community. The increase of Hawaiian students engaging in early college experiences has been extensive over the past decade and Ho'oku'i has been instrumental in facilitating and supporting this growth."

WELLNESS MATTERS PROGRAMS



By Dr. Kelle L Murphy, Founder,
kellem@hawaii.edu.

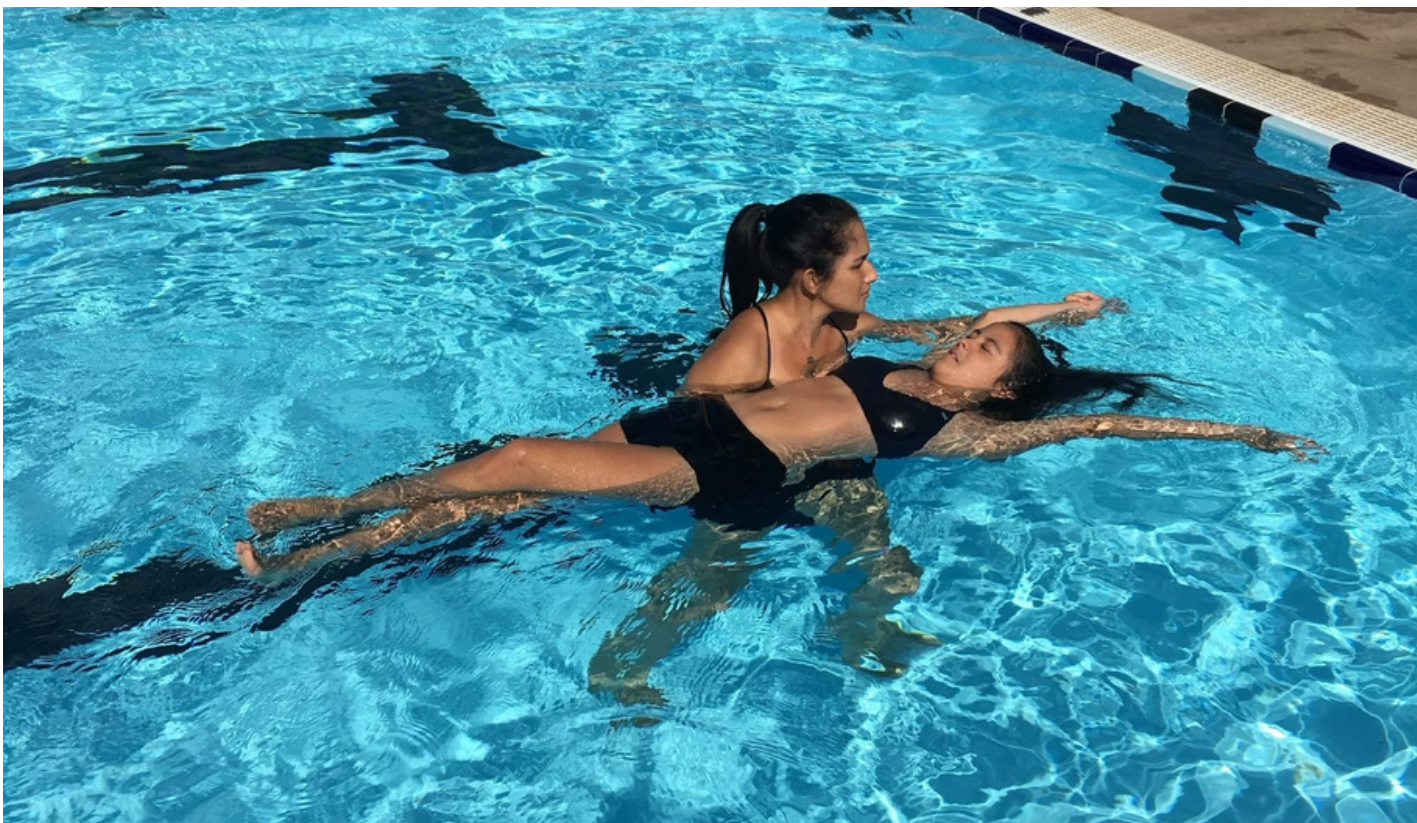


Photo of parent and child in the Swim Safe: ASD,

Wellness is critical to overall well being for all individuals and can be even more important for individuals with disabilities as it offers opportunities to not only engage in physical activities but also to socialize with peers that they may not have otherwise. The Wellness Matters Program was developed to offer opportunities for individuals with intellectual disabilities and developmental disabilities (I/DD) and their family members to spend quality time together enjoying physical activity and activities related to wellness. The Wellness Matters Program consists of 1) Inclusive First Aid/CPR/AED; 2) Swim Safe: ASD; and 3) Wellness Matters Physical Activity Program.



Inclusive First Aid/CPR/AED

About 65% of Americans receive CPR certification; however, only about 18%

maintain the certification. The statistics are even less for certification for individuals with disabilities. Twenty-six percent of Americans are living with a disability. These statistics demonstrate the need for individuals with disabilities, caregivers, and family members to have the opportunity to become certified.

This program was developed to address this need and is open to the disability community including adults with I/DD, caregivers, and family members. The ability to identify and respond to various health issues, provide proper First Aid and how to perform CPR/AED are integral components of health and wellness.

Classes offer opportunities for participants to learn these lifesaving skills. Participants learn how to assess the scene for safety, appropriate CPR/AED and First Aid based on the assessment, how to address choking, and other health-related, injury-related, and environmental-related situations.



Curriculum is culturally relevant, tailored to the disability community, and participants receive American Heart Association (AHA) certification upon completion. Each session consists of two 3 hours classes (Class #1- First Aid; Class # 2- CPR/AED) and participants must attend both classes to receive certification. To date, 50 people have participated and received certification.

Swim Safe: Aquatic Skills Development (ASD) Program

Drowning is the leading cause of death for individuals with ASD and accounts for 91% of the US total of accidental drownings. Autistic individuals like the water because it is calming and peaceful.



This program was developed to address these alarming statistics and is open to individuals with ASD ages 4 to adult.

Participants learn safety skills to prevent drowning, basic swimming skills, increase comfort level in the water, increase communication skills, and develop relationships with other families. A family-centered approach is used and the parent/guardian, family member or Registered Behavior Therapist (RBT) are

trained to serve as the instructor. Each session is 8 weeks, meets once a week, and offers three 30-minute lessons. To date, 300 families have participated in the program.



Wellness Matters Physical Activity Program

Less than 45% of individuals with a mobility disability engage in physical activity and approximately 40% of individuals with disabilities in the U.S. experience social isolation.

This program was developed to provide opportunities to address these statistics and is open to adults with I/DD, caregivers, family members, and coaches.

Participants are offered the opportunity to engage in popular lifetime activities, Paralympic activities, and adapted physical activities with family members, caregivers, coaches, and peers. A family-centered approach is used and the parent/guardian, family member or coaches are asked to participate to assist the individual with I/DD. Each session is 8 weeks and meets once a week for an hour.

To date, 20 families have participated in the program.



Get Involved!

- Families:** learn new teaching & learning techniques.
- Partners:** become a community partner and share upcoming programs within your network, or host a private group session.
- Volunteer:** learn new teaching & learning techniques.
- Graduate Students:** enroll in DIS 688 fieldwork/practicum to assist.

UPCOMING PROGRAMS

The Wellness Matters Programs are offered throughout the year at various locations.

SWIM SAFE: ASD PROGRAM

Classes are offered at two locations:

- University of Hawai'i at Mānoa (UHM) Duke Kahanamoku Aquatic Complex during the fall and spring semester.
- Kroc Center in Kapolei year round.

PHYSICAL ACTIVITY PROGRAM

Classes are offered at UHM during the fall and spring semester.

INCLUSIVE FIRST AID CPR/AED

Classes are offered at the Center on Disability Studies (CDS) UHM throughout the year.

Upcoming sessions are sent by email through the Wellness Matters Programs listserv, Special Parent Information Network (SPIN), CDS quarterly newsletters, as well as, [CDS website](#) and the [Hawai'i Autism Foundation website](#). For information regarding any of the programs and to be added to the email lists, contact Dr. Kelle L Murphy at kellem@hawaii.edu.



EVENT HIGHLIGHTS

2024 Hawai'i Summit on Employment First



**Hawai'i APSE - Association of
People Supporting Employment**

*By Patrick Gartside and Sandee Oshiro,
Hawai'i APSE, info@HawaiiAPSE.org*



Photo - Welcoming ceremony at the summit of attendees on February 29, 2024. Photo credit Patrick Gartside.

The 2nd Annual Summit on Employment First drew an enthusiastic crowd on February 29 as the Pacific Rim Conference post-event provided inspiration and training for participants aimed at increasing sustainable jobs for those with disabilities.

Expert speakers informed self-advocates, professionals, service providers, and policymakers about the ongoing efforts and strategies to improve employment for those facing challenges in the job market.

Highlights of the event included:

- Hearing an uplifting keynote presentation by brother-sister motivational speakers Derrick & Julie Tennant on overcoming obstacles to achieve one's dreams.
- Learning practical steps in approaching employers with a solutions-forward case for hiring people with disabilities.
- Understanding how evidence based supported employment models such as individual placement supports are implemented while keeping mental health and other factors in mind to increase employment success.



Photo - Keynotes Derrick & Julie Tennant.

The event's lead organizer, Patrick Gartside, said the summit exceeded its goals, reaching more than 120 participants.

"It is exciting to see Employment First stakeholders come together from around our island communities to paint a vision of equitable employment for all people in Hawai'i, but we must continue to work together to lay the groundwork for these opportunities to become reality."



Anyone interested in helping to create a more equitable, inclusive employment future for the disability community in Hawai'i can take these steps:

#1 Watch the summit presentations



available now by visiting go.hawaii.edu/nvL.
More videos and slides will be added as available.

#2 Join the [Hawaii APSE chapter](#)

The Association of People Supporting Employment First is leading the effort for inclusive workplaces and fair wages and benefits. Help amplify our voices in support of full participation in work and careers.



#3 Sign up



for the [Employment Support Professional Community of Practice](#). Network and share best practices with other professionals who are seeking quality jobs for all.

2024 CONFERENCE HIGHLIGHTS



Pacific Rim Conference

By Genesis Leong, genesisl@hawaii.edu



Photo of the 2024 Pac Rim Conference organizing team (left to right) Richard Tran, Davin Takahashi, Dr. Lauren Lum Ho, Dr. Maya Matheis, Dr. Nicole Schlaack, Dr. Naomi Rombaoa Tanaka, Dr. Holly Manaseri, Genesis Leong, Max Malmud, Dr. Raphael Raphael, and Lisa-Marie Eng (not pictured, Lori Lum and Sandra Oshiro).

On February 27th, the Center on Disability Studies (HI-UCEDD) welcomed over 750 attendees representing 12 countries from across the globe to Honolulu, Hawai'i to the 39th Annual Pacific Rim International Conference on Disability and Diversity both online and in-person. In celebration of the conference theme, *Beyond Access: Building a Culture of Belonging* we aimed to explore how we all live to belong, to be part of something greater than ourselves.

#PacRim2024 Highlights include:



Featured Presenters Keynote Mia Ives-Ruble, *Disability Justice Initiative at the Center for American Progress*; Keynote Justice Shorter, *SeededGround*; and Kiran Singh Sirah, Storyteller and Peacebuilder.

7 Conference strands representing: Public Health & Healthcare; Inclusive Physical Activity, Recreation, and Sport; Neurodiversity; Built Environments: Digital, Physical, and Social; Employment; Inclusive Practices in Education; and Low Incidence Disabilities / Extensive Support Needs.

300+ Presenters and 157 presentations representing advocates, researchers and practitioners

20+ Exhibitors and Sponsors including College of Education, University of Hawai'i at Mānoa; Hawai'i State Developmental Disabilities Division; Hawai'i State Council on Developmental Disabilities (DD Council); Hawai'i Disability Rights Center; Aloha Independent Living Hawai'i; Assistive Technology Resource Centers of Hawai'i; Department of Education, Children's Community Council; Easterseals Hawai'i; Oregon Health & Science University UCEDD; and much more.

8 Pre-events and Post-events including AS-UCEDD and HI-UCEDD Emergency/Disaster Response and Recovery; Hawai'i APSE Employment First; SUPERFEST Disability Film Festival; VRTA Center for Quality Employment, the International Forum on Disability Studies, and Symposium on Postsecondary Transition of Neurodivergent students in STEM, etc.

Join us in March 2025, as we celebrate our 40th Pac Rim Conference in Honolulu, Hawai'i!! To get the latest updates for proposal submissions, sponsorship and exhibitor opportunities sign-up for the Pac Rim email listserv at <http://eepurl.com/g79LAX>, email prinfo@hawaii.edu, or visit us online at <https://pacrim.coe.hawaii.edu/>.

FOSTERING COMMUNITY

2024 Pacific Rim Conference Sponsors and Exhibitors



Pacific Rim Conference



Photo: group photo at the Easterseals Hawaii exhibitor team at the Pac Rim Conference. Photo credit Monica Patrie.

Mahalo to this year's sponsors:

- [College of Education, University of Hawai'i at Mānoa](#)
- [Developmental Disabilities Division, Hawaii State Department of Health](#)
- [Hawai'i State Council on Developmental Disabilities \(DD Council\)](#)
- [Center for Assistive Technology Training \(CATT\)](#)
- [Paul K. Longmore Institute on Disability](#)
- [Hawai'i Association of People Supporting Employment First](#)

SCHOLARSHIP RECIPIENTS 2024



Pacific Rim Conference

By Dr. Nicole Schlaack, Scholarship
Coordinator, schlaack@hawaii.edu



Photo (left to right) Dr. Nicole Schlaack, Karen Jeynes, Dr. Alexandra Stribing, Betty Gaoteote, Dr. Sabrina Ali Jamal-Eddine, Jen Ham, Māhealani Ahia, & Dr. Raphael Raphael - not on the picture: Josephone Blas and Jaquelyn Jaquelyn.

This year, the Pac Rim Conference team reintroduced conference scholarship opportunities under the guidance of scholarship coordinator Dr. Nicole Schlaack and with the participation of review committee members Dr. Raphael Raphael, Martha Guinan, and Jessie Sawyer. The committee received a total of 48 applications from individuals around the globe and successfully granted a total of eight scholarships. The scholarship was awarded to 3 young professionals, 3 students and professionals with disabilities, and 2 family members of a person with a disability. Most scholarship recipients also presented at the conference.

The scholarship recipients traveled to Honolulu from Guam, South Africa, The Federated States of Micronesia, American Samoa, Ohio, New Jersey, California, and Hawai'i. The Pac Rim Conference Planning Committee is pleased to provide these scholarships, ensuring the accessibility and enjoyment of this conference for all!



Betty Gaoteote

PAC RIM SCHOLARSHIP RECIPIENT

My name is Betty Gaoteote, a proud native of the South Pacific. In my professional capacity, I serve the American Samoa's Department of Health as a program evaluator for the CDC's Public Health Infrastructure Grant. My academic background is rooted in Human Services, a field I pursued with dedication, leading to my graduation from Walden University and the esteemed Community College of American Samoa. Beyond my professional endeavors, my life is

enriched by the joy of exploring new culinary delights alongside my children Meridian, Mercy, and Niko. My passion for learning is a constant in my life, as I am always on the lookout for opportunities to broaden my knowledge and skills. This drive is not just for personal growth but is fundamentally aimed at benefiting the community and people I am committed to serve.

As I look forward to participating in the Pacific Rim Conference, I am filled with anticipation for the learning and growth opportunities it presents. I am confident that this experience will be transformative, aligning perfectly with my ongoing journey of personal and professional development. My story is one of continuous learning, dedicated service, and a deep commitment to the betterment of the people of American Samoa.



Jen Ham

PAC RIM SCHOLARSHIP RECIPIENT

Jen Ham is a fourth year PhD student in the History of Consciousness who theorizes from her embedded and embodied position as a blind-deaf woman of color in a constant state of co-constitution with her canine guide and the multiplicity of environments they traverse. Jen's work explores the ways in which health/care emerges with/in entangled worlds. Pulling from research she conducted in Belgium and Denmark, Jen examines the particular ways alternative radical care systems grapple with the social-reproductive contradiction implicit to capitalism.



Dr. Alexandra Stribing

PAC RIM SCHOLARSHIP RECIPIENT

Dr. Alexandra Stribing, PhD, is an assistant professor at Kean University in Health and Physical Education. Her service initiatives focus on developing inclusive and empowering programs for youth with disabilities. She is the current director of the Cougars C.L.I.M.B. Adapted Physical Education program and Camp Abilities Field of Dreams.

Dr. Stribing's research efforts concentrate on motor development, physical activity, and health attributes of youth populations (a) with and without disabilities and/or (b) from disadvantaged settings. Specifically, her current research focuses on perceptual influences on actual motor competence in youth with visual impairments. Dr. Stribing has published in numerous peer-reviewed journals such as *British Journal of Visual Impairment and Blindness*, *Journal of Motor Learning and Development*, and *Adapted Physical Activity Quarterly*.



Karen Jeynes

PAC RIM SCHOLARSHIP RECIPIENT

Karen Jeynes has worked extensively as a writer for stage and screen, most recently as the writer, co-director and creative producer of comedy series *The Morning After*, and drama series *Recipes for Love and Murder*. Other productions she has developed and overseen with creative partner Thierry Cassuto at *Both Worlds* are *Point of Order*, *Comedy Central News*, and *Parlement Parlement*, and the documentary *Africa and I*, as well as working as the head writer for *ZANews: Puppet Nation*. She is also in demand as a script consultant, editor and advisor for TV, film and theatre work, working with local and international production companies and broadcasters, as well as individual writers. She is currently busy with her PhD on autistic representation on South African television through the University of Pretoria, and lobbying for the South African industry to reimagine the way it views disability representation on and behind the screen.



— Dr. Sabrina Ali Jamal-Eddine

PAC RIM SCHOLARSHIP RECIPIENT

Dr. Sabrina Ali Jamal-Eddine, PhD BSN RN is an Arab disabled queer cisgender woman of color, Spoken Word Poet, Registered Nurse, and health humanities nurse scientist with an interdisciplinary certificate in Disability Ethics from University of Illinois Chicago (UIC). Sabrina's recently defended doctoral research explored the use of spoken word poetry as a form of critical narrative pedagogy to educate nursing students about disability, ableism, and disability justice. Sabrina serves on the Board of Directors of the National Organization of Nurses with Disabilities (NOND) and UIC Chancellor's Committee on the Status of Persons with

Disabilities and is a 2023 Zoeglossia (disabled poet) fellow. Sabrina will soon begin a postdoc in UIC's Disability and Human Development Department. Sabrina's goal is to create transformative change within healthcare education praxis by developing engaging pedagogic strategies to educate healthcare students about ableism and intersectional identity-based oppression. Her long-term goal is to found an interdisciplinary, applied public-humanities community-engaged healthcare equity center in a university that confronts healthcare inequity, violence, and oppression and promotes liberation, humanization, and belongingness for all patients, students, and practitioners.



— Māhealani Ahia

PAC RIM SCHOLARSHIP RECIPIENT

Māhealani Ahia (she/her/'o ia) is a Kanaka 'Ōiwi artist, scholar, activist, songcatcher and storykeeper with lineal ties to Maui. With a background in theatre arts, writing and performance from U.C. Berkeley and U.C. Irvine, Māhea is committed to creating artistic and educational projects that elevate voices of Indigenous feminist decolonial storytelling. She is a PhD candidate in English (Hawaiian Literature) and Graduate Certificate student in Women, Gender, and Sexuality Studies at the University of Hawai'i at Mānoa, where she has taught "Indigenous Women's Health," "Writing For Healing,"

"Indigenous Feminisms," and currently "Intro to LGBTQ+ Studies." Māhea serves her community as a cohort member of Leadership Education in Neurodevelopmental and Related Disabilities (LEND), as a Hawai'i Pacific Foundation/East-West Center scholar, as Grievance Chair for UHM graduate Academic Labor United (ALU), as editor for *Hawai'i Review and 'Ōiwi: A Native Hawaiian Journal*, as co-organizer of the Mauna Kea Syllabus Project, and as co-facilitator of "Committed: A Decolonial DeTour" which re/stories "asylum" mental health history in Hawai'i and is sponsored by the Indigenous Dis/abilities Hui Hawai'i and Mānoa Center for the Humanities and Civic Engagement.

VOLUNTEER PROGRAM SPOTLIGHT

*Program Recap - 39th Pacific Rim International Conference on Disability and Diversity
By Dr. Nicole Schlaack, Volunteer Coordinator, schlaack@hawaii.edu*



Photo - 2024 Volunteers

We are thankful for the volunteers who helped make this conference possible!! This year's volunteer program was led by volunteer coordinator Dr. Nicole Schlaack. This year 21 volunteers included Adam Tanners, Adrienne Hill, Ali Hildenbrand, Bobb Revels, Carmen Lee, Daniela Bond-Smith, Denise Dolan, Grant Tanaka, Hanako Heine, Jared Galeai, Jenna Singh, Jessie Sawyer, Joseph Peters, Kiyomi Umezawa, Kristofer Teves, Maria Houar, Melody Halzel, Michelle Jay, Rejil Joseph, Robin Dazzeo, & Sarah Richard. Mahalo nui loa for all of your help and support!!

NEURODIVERSITY AND CREATING AN INCLUSIVE CULTURE



Joshua Crafford

Explore the vital role neurodiversity plays in enhancing the success of organizations, academics and communities. Uncover the reasons behind why neurodivergent individuals hide their identity and discover easy ways to provide support. Join us for an insightful session that promises to foster understanding and inclusion.