

Publisher: Institute for Operations Research and the Management Sciences (INFORMS)
INFORMS is located in Maryland, USA



Information Systems Research

Publication details, including instructions for authors and subscription information:
<http://pubsonline.informs.org>

Motivational Differences Across Post-Acceptance Information System Usage Behaviors: An Investigation in the Business Intelligence Systems Context

Xixi Li, J. J. Po-An Hsieh, Arun Rai

To cite this article:

Xixi Li, J. J. Po-An Hsieh, Arun Rai (2013) Motivational Differences Across Post-Acceptance Information System Usage Behaviors: An Investigation in the Business Intelligence Systems Context. *Information Systems Research* 24(3):659-682. <http://dx.doi.org/10.1287/isre.1120.0456>

Full terms and conditions of use: <http://pubsonline.informs.org/page/terms-and-conditions>

This article may be used only for the purposes of research, teaching, and/or private study. Commercial use or systematic downloading (by robots or other automatic processes) is prohibited without explicit Publisher approval, unless otherwise noted. For more information, contact permissions@informs.org.

The Publisher does not warrant or guarantee the article's accuracy, completeness, merchantability, fitness for a particular purpose, or non-infringement. Descriptions of, or references to, products or publications, or inclusion of an advertisement in this article, neither constitutes nor implies a guarantee, endorsement, or support of claims made of that product, publication, or service.

Copyright © 2013, INFORMS

Please scroll down for article—it is on subsequent pages



INFORMS is the largest professional society in the world for professionals in the fields of operations research, management science, and analytics.

For more information on INFORMS, its publications, membership, or meetings visit <http://www.informs.org>

Motivational Differences Across Post-Acceptance Information System Usage Behaviors: An Investigation in the Business Intelligence Systems Context

Xixi Li

School of Economics and Management, Tsinghua University, Beijing 100084 China,
ciciattsinghua@gmail.com

J. J. Po-An Hsieh

Department of Management and Marketing, The Hong Kong Polytechnic University, Hong Kong,
jj.hsieh@inet.polyu.edu.hk

Arun Rai

Center for Process Innovation and Department of Computer Information Systems, Robinson College of Business,
Georgia State University, Atlanta, Georgia 30303, arunrai@gsu.edu

We identify two post-acceptance information system (IS) usage behaviors related to how employees leverage implemented systems. Routine use (RTN) refers to employees' using IS in a routine and standardized manner to support their work, and innovative use (INV) describes employees' discovering new ways to use IS to support their work. We use motivation theory as the overarching perspective to explain RTN and INV and appropriate the rich intrinsic motivation (RIM) concept from social psychology to propose a conceptualization of RIM toward IS use, which includes intrinsic motivation toward accomplishment (IMap), intrinsic motivation to know (IMkw), and intrinsic motivation to experience stimulation (IMst). We also consider the influence of perceived usefulness (PU)—a representative surrogate construct of extrinsic motivation toward IS use—on RTN and INV. We theorize the relative impacts of the RIM constructs and PU on RTN and INV and the role of personal innovativeness with IT (PIIT) in moderating the RIM constructs' influences on INV. Based on data from 193 employees using a business intelligence system at one of the largest telecom service companies in China, we found (1) PU had a stronger impact on RTN than the RIM constructs, (2) IMkw and IMst each had a stronger impact on INV than either PU or IMap, and (3) PIIT positively moderated the impact of each RIM construct on INV. Our findings provide insights on managing RTN and INV in the post-acceptance stage.

Key words: post-acceptance stage; post-acceptance behaviors; routine use; innovative use; motivation theory; intrinsic motivation; business intelligence systems

History: Vallabh Sambamurthy, Senior Editor; Weidong Xia, Associate Editor. This paper was received January 9, 2010, and was with the authors for 14 months for 2 revisions. Published online in *Articles in Advance* May 28, 2013.

1. Introduction

Throughout the last 30 years, organizations have continually invested significant resources in implementing complex information systems (IS) to achieve competitive advantages. In general, IS implementation is conceived as a multistage process (Cooper and Zmud 1990, Kwon and Zmud 1987). Whereas the preacceptance and acceptance stages establish milestones of initial IS success (Thong 1999), the post-acceptance stage is critical for organizations to realize returns on IS investments (Bhattacharjee 2001, Jasperson et al. 2005, Saga and Zmud 1994). However, in the post-acceptance stage, employees rarely use the implemented IS to its fullest potential, thus preventing organizations from realizing the promised benefits. The extant IS literature has primarily examined

IS use at the preacceptance and acceptance stages, although IS usage behaviors in the post-acceptance stage have received limited attention (e.g., Hsieh and Wang 2007, Jasperson et al. 2005). In this study, we investigate routine use (RTN) and innovative use (INV)—two distinct usage behaviors that can coexist in the post-acceptance stage and are suggested to be important in leveraging implemented systems and ameliorating low returns on IS investments (Jasperson et al. 2005, Saga and Zmud 1994).

After gaining first-hand usage experience in the acceptance stage, employees develop a certain level of understanding about an implemented IS, which enables them to achieve work objectives in the post-acceptance stage by not only using the system in a standardized way but also using the system in novel

ways that they uncover (Saga and Zmud 1994). Two key, yet distinct, post-acceptance IS usage behaviors that employees can engage in to achieve work objectives are (1) routine use (RTN), or using IS in a routine and standardized manner to support their work (Saga and Zmud 1994, Schwarz 2003), and (2) innovative use (INV), or applying IS innovatively to support their work (Ahuja and Thatcher 2005, Jaspersen et al. 2005). Routine and innovation behaviors have been shown to create significant advantages when they coexist in various organizational behavior contexts including the following: employees' simultaneous pursuit of standard performance and innovative performance (Janssen 2001, Katz and Kahn 1966), knowledge workers' reuse of existing solutions and exploration of new solutions to solve problems (Durcikova et al. 2011), customers' general and innovative product usage behaviors (Hirschman 1980, Ridgway and Price 1994), and organizations' use of both exploitation and exploration learning strategies (e.g., Atuahene-Gima and Murray 2007).

We conceive RTN and INV as two qualitatively different behaviors that can coexist in the post-acceptance stage and need to be managed holistically (Benner and Tushman 2003, Gupta et al. 2006, March 1991). The resident challenge is to promote the coexistence of both RTN and INV, which has motivated us to examine them together in the post-acceptance context. Accordingly, it is important to understand the mechanisms that promote RTN and/or INV, as knowledge in this regard will help organizations achieve the desired balance and synergy between the two usage behaviors and realize the benefits that each behavior provides (Atuahene-Gima and Murray 2007). Toward this end, we draw on motivation theory and propose that RTN and INV are promoted differentially by extrinsic and intrinsic motivations.

Specifically, people engage in activities based on intrinsic motivation and extrinsic motivation (Deci and Ryan 2002). Intrinsic motivation refers to the state in which a person performs an activity for the joy or satisfaction derived from the activity itself, and extrinsic motivation refers to the state in which a person performs an activity to gain external benefits (e.g., rewards, money) rather than simply partaking in the activity (Deci and Ryan 2002). Although motivation theory has been applied in previous IS studies to understand general IS use (Venkatesh et al. 2003), our literature review reveals that intrinsic and extrinsic motivations have received unbalanced attention in IS research and that there is a gap in our understanding on their differential roles in predicting different post-acceptance usage behaviors.

Prior IS research has typically viewed perceived usefulness (PU) as the most important extrinsic motivator and perceived enjoyment (PE) as the most representative intrinsic motivator for IS use (Brown and

Venkatesh 2005, Davis et al. 1992). Researchers have paid significantly more attention to the role of extrinsic motivation than intrinsic motivation in understanding IS use (e.g., Venkatesh et al. 2003, Legris et al. 2003, Hong et al. 2006, van der Heijden 2004). This biased attention is attributable, in part, to the oversimplified conceptualization of intrinsic motivation toward IS use. As suggested by Thomas and Velthouse (1990), intrinsic motivation in workplaces should be distinguished from intrinsic motivation in hedonic contexts. In organizations, employees are likely to pay more attention to instrumental job-related benefits that could be generated from IS use rather than the hedonic values derived from IS use (Van der Heijden 2004), yet IS use may still be enjoyable because of the meaningfulness, satisfaction, and fulfillment that employees derive from it (Deci and Ryan 2002, Vallerand 1997). However, PE does not capture the richness of these innately rewarding perceptions. To develop a more comprehensive and precise conceptualization of intrinsic motivation toward IS use, we appropriate the multidimensional intrinsic motivation conceptualization from social psychology (Vallerand 1997, van Yperen and Hagedoorn 2003) to the post-acceptance IS use context and propose the concept of rich intrinsic motivation (RIM), which consists of the following three constructs: intrinsic motivation toward accomplishment (IMap), intrinsic motivation to know (IMkw), and intrinsic motivation to experience stimulation (IMst).

Most IS studies in organizational settings have identified extrinsic motivation, specifically PU, as the dominant predictor of IS use (e.g., Davis et al. 1992, Legris et al. 2003). Drawing on this insight from past IS research, we focus on PU as a representative surrogate construct of employees' extrinsic motivation toward a system implemented in their organization. We challenge the predominant role of extrinsic motivation, specifically PU, in explaining IS use and argue that it is inadequate for explaining post-acceptance IS use behaviors. Our position is consistent with creativity research, which reveals that intrinsic motivation has a tremendous impact on innovative behaviors in organizations (Amabile 1996) and that extrinsic motivation, though instrumental in enhancing common work performance, has less influence on creativity than intrinsic motivation (Bass 1998, McGraw 1978). Thus, we elaborate on the conceptualization of post-acceptance IS use behaviors by differentiating between RTN and INV, introduce the RIM concept to capture intrinsic motivation toward IS use, and argue for a nuanced and holistic view that considers the role of both extrinsic and intrinsic motivations in influencing post-acceptance IS usage behaviors.

In addition, to further understand the influence of RIM on INV, we identify employees' personal innovativeness with IT (PIIT) as an important individual

characteristic that should moderate this relationship. Uncovering individual characteristics that serve as moderators can reveal important differences in relationships between constructs across individuals and can provide a powerful basis to tailor interventions based on salient individual characteristics (Evans and Lepore 1997, Wohlwill and Heft 1987). Accordingly, we explore the influence of RIM on INV across levels of employees' innovativeness with IT.

To summarize, our research objectives are to (1) conceptualize two important, yet distinct, post-acceptance usage behaviors (i.e., RTN and INV); (2) appropriate the RIM concept to the post-acceptance IS use context to enrich the knowledge on intrinsic motivation toward IS use; (3) examine the relative importance of the three RIM constructs and PU in explaining RTN and INV; and (4) investigate how PIIT moderates RIM's influence on INV.

2. Theoretical Background

To set the theoretical foundations for our work, we define routine use and innovative use, introduce the concept of rich intrinsic motivation and contextualize it to IS use, and develop the rationale for personal innovativeness with IT (PIIT) as an individual characteristic that moderates RIM's influence on INV.

2.1. Routine Use and Innovative Use

2.1.1. Coexistence of RTN and INV in the Post-Acceptance Stage. IS implementation in an organization typically involves six stages (Cooper and Zmud 1990, Saga and Zmud 1994): initiation, adoption, adaptation, acceptance, routinization, and infusion. Although the first three stages primarily concern activities at macro levels (e.g., organizational or departmental levels), the latter three stages are manifested at both macro and micro levels. Specifically, at an individual level, *acceptance* reflects employees' commitment to IS use, *routinization* describes the state in which IS use is integrated as a normal part of the employees' work processes, and *infusion* refers to embedding IS deeply and comprehensively in work processes (Cooper and Zmud 1990, Saga and Zmud 1994). Importantly, routinization and infusion—conceived together as the post-acceptance stage (Hsieh and Wang 2007)—do not necessarily occur in sequence but rather occur in parallel (Cooper and Zmud 1990, Saga and Zmud 1994). Accordingly, although RTN and INV are typically associated with the routinization and infusion stages, respectively, employees can engage in both of them in the post-acceptance stage (Cooper and Zmud 1990, Saga and Zmud 1994).

Moreover, during the post-acceptance stage, employees may display either RTN or INV at a

precise point in time during a workday, but they can also display both behaviors within a period of time (e.g., an entire workday). Also, both RTN and INV are expected to vary across employees. RTN, or employees' routine use of IS in their work, may differ as employees exhibit significant variance in the extent to which they standardize and integrate IS use in their work (Brown et al. 2002, Hartwick and Barki 1994). Similarly, INV occurs at employees' discretion and can also vary across employees (Hsieh and Wang 2007, Silver 1991).

2.1.2. Frame of Reference for RTN and INV. Our frame of reference for RTN and INV is the individual employee who uses IS in the post-acceptance stage to support his or her work. Because it is typically difficult for one's IS usage behaviors to be observed by others (Goodhue and Thompson 1995, Rai et al. 2002), the focal individual's cognitive framework is usually the most appropriate frame of reference for his or her own behaviors (Dutton and Penner 1993, Weick et al. 2005). Also, whether a behavior (which is hard to be observed by a third party) is routine or innovative is in the beholder's eyes. Indeed, empirical evidence shows that individuals resort to their own cognitive frameworks as the reference point to make sense of their behaviors (Weick et al. 2005, Dukerich et al. 2002). Owing to the hard-to-observe nature of IS usage behaviors and the importance of individuals' cognitive framework in making sense of their own behavior, we view employees as the frame of reference for their IS usage behaviors (i.e., RTN and INV).

2.1.3. RTN vs. INV: Standardization vs. Innovation Orientation. We propose that RTN and INV can be contrasted based on the distinction between standardization and innovation orientations of employees' IS usage behaviors. Researchers have differentiated between the standardization and innovation of activities at the organizational level (e.g., Benner and Tushman 2002, 2003). Whereas standardization aims to avoid risks, routinize activities, and improve efficiency in work processes, innovation challenges this embedded stability in work processes and generates creative alternatives (Benner and Tushman 2002). Achieving significant performance outcomes is often contingent upon organizations' ability to manage the standardization *and* innovation of activities simultaneously (Benner and Tushman 2003, Teece et al. 1997). In this study, we draw on these two qualitatively different orientations to conceptualize the differences between employees' RTN and INV in the post-acceptance IS implementation context.

Drawing on the standardization versus innovation distinction and synthesizing prior IS literature (Table 1), we first define RTN as employees' using IS

Table 1 Similar IS Use Concepts in the IS Literature

IS use	Similar concepts and sources
Routine use	1. Routine use (Schwarz 2003) The extent to which IS use has become a normal part of work routines
	2. Routine use (Sundaram et al. 2007) The extent to which IS use has been integrated into users' normal work routine
	3. Standardized use (Saga and Zmud 1994) Users' utilization of IS in a way that reduces variations in usage patterns
	4. Use perceived as being normal (Saga and Zmud 1994) Users' perception that their IS use is normal
Innovative use	1. Emergent use (Saga and Zmud 1994) Users' utilization of IS to accomplish work that was not feasible or recognized prior to the application of the IS to the work system
	2. Emergent use (Wang and Hsieh 2006) Users' utilization of IS in an innovative manner to support their work performance
	3. Individual feature extension (Jasperson et al. 2005) Users' discovery of ways to apply the IS features that go beyond the ways originally conceived by the designers or implementers of the IS
	4. Intention to explore (Nambisan et al. 1999) Users' willingness to and purpose for exploring IS and identifying its potential use
	5. Trying to innovate with IT (Ahuja and Thatcher 2005) Users' goals of finding novel uses for IS

in a routine and standardized way to support their work. Routine use (Schwarz 2003, Sundaram et al. 2007), which is likened to standardized use and use perceived as being normal (Saga and Zmud 1994), has two unique characteristics: (1) it is repetitious and perceived as a normal part of employees' work activities and (2) it has been standardized and incorporated into employees' work processes. As we set employees as the frame of reference for evaluating the nature of their own post-acceptance usage behaviors, RTN focuses on the standardization of IS use in individual employees' work processes rather than the standardization of IS use across employees in an organization that implements a system. Such repetitive and standardized use of IS in the post-acceptance stage helps employees develop familiarity with the implemented system, thereby facilitating IS use to be integrated in their individual work processes (Saga and Zmud 1994).

Next, INV, as a form of innovation at the individual level, describes employees' application of IS in novel ways to support their work. In the post-acceptance stage, through accumulated experiences with the implemented IS, employees are able to apply the IS in innovative ways, thereby realizing its further value (Jasperson et al. 2005). Some concepts have been introduced to explain employees' creative application of IS (Table 1), such as "emergent use" (Saga and Zmud 1994, p. 80; Wang and Hsieh 2006),

"individual feature extension" (Jasperson et al. 2005, p. 531), "intention to explore" (Nambisan et al. 1999, p. 373), and "trying to innovate with IT" (Ahuja and Thatcher 2005, p. 434). Although these concepts concern employees' creative IS use, there is ambiguity as to whether or not the innovative use pertains to supporting their work. In this study, given our emphasis on employees' IS use in organizational contexts, we focus on employees' innovative use of IS to support their work.

In short, RTN and INV describe two qualitatively different post-acceptance IS usage behaviors performed by an employee to support his or her work. The agent (i.e., the employee) and the purpose (i.e., to support his or her work) of these two IS usage behaviors are the same. The main difference lies in the nature of these two behaviors—namely, how the employee uses the system. Consider a marketing analyst whose work responsibilities include evaluating the firm's marketing performance, understanding the competitive environment, and suggesting marketing strategies. To fulfill his or her assigned work, the analyst is expected to use a business intelligence system (BIS) equipped with various analytic functions to analyze data that are consolidated in a data warehouse (that includes customer, product, service, and sales data, as well as competitors' activities). In this setting, RTN could refer to the analyst generating standardized reports on a routine basis; by reviewing these reports, the analyst can understand current marketing performance and external conditions and then suggest adjustments in marketing strategies. Additionally, if the analyst believes that he or she can attain further insights that could not be attained via the routine use of the BIS, he or she can engage in INV, such as extracting new variables from the data warehouse, combining variables across several routine reports to generate novel views of customers' purchase patterns, or synthesizing the analysis functions used in various routine reports to analyze the data in very different manners. In effect, INV pertains to the analyst using the BIS in novel nonroutine ways to creatively analyze data in the data warehouse and suggest alternatives for marketing strategies. Thus, although RTN and INV represent very different ways of using the BIS, both usage behaviors can enable the analyst to accomplish his or her assigned work.

2.1.4. RTN vs. INV: Employees' Learning Orientation of IS Use. We propose that RTN and INV also differ in their learning orientation such that they bear resemblance to the twin concepts of exploitation and exploration in organizational learning research (March 1991, Im and Rai 2008). We draw on learning as a supplemental theoretical lens because learning influences the utilization of existing knowledge and/or the creation of new knowledge

(Gupta et al. 2006), thereby reducing barriers to assimilating IS in work processes (Fichman and Kemerer 1999, Robey et al. 2002). This also responds to scholars' call to apply the learning perspective to understand post-acceptance IS usage behaviors (Cooper and Zmud 1990, Jasperson et al. 2005). In the organizational learning literature, exploitation refers to the utilization of existing resources and competencies, and exploration describes organizations' experimentation with new alternatives (March 1991, Gupta et al. 2006, Im and Rai 2008). Arguably, employees' repetitive use of IS (i.e., RTN) captures the idea behind exploitation because employees' cognition is anchored and refined with respect to standardized ways of using the implemented IS (Starbuck 1982). On the other hand, attempts at novelty (i.e., INV) are similar to exploration, which goes beyond standardized ways of applying the IS to support employees' work (Hsieh and Zmud 2006, Jasperson et al. 2005). Compared to RTN, INV involves more dramatic learning and requires employees' to expand their knowledge about the potential of the implemented IS for their work.

2.1.5. Summary. Our above discussion suggests that viewed from the frame of reference of an employee whose work is supported by a system, RTN and INV are two behaviors that can coexist and support employees' work in the post-acceptance stage. Whereas RTN pertains to employees' engaging in standardized IS use, INV refers to employees' exploring and incorporating novel ways to use the system to support their work. Given the importance of managing standardized and innovative behaviors simultaneously in organizational contexts (Benner and Tushman 2003, Teece et al. 1997), it is not only crucial to focus on employees' routine use of the system, but it is also important to focus on employees' discovery of how the system can be used innovatively to achieve work objectives (Jasperson et al. 2005). Toward this end, motivation theory offers a solid theoretical foundation to explain employees' variations in these two IS usage behaviors.

2.2. Motivation Theory

Individuals engage in activities because of intrinsic motivation and extrinsic motivation (Deci and Ryan 2002, Vallerand 1997). The key difference between intrinsic and extrinsic motivations is that whereas intrinsically motivated individuals enjoy the process of performing a given activity, extrinsically motivated individuals value the results rather than the process of performance (Deci and Ryan 2002, Vallerand 1997). Moreover, extrinsic motivation is associated with individuals perceiving tension and pressure, whereas intrinsic motivation is associated with individuals feeling free and relaxed (Vallerand 1997). As a

result, intrinsic motivation can induce cognitive flexibility, enjoyment, and satisfaction during an activity, thereby stimulating innovation (Amabile 1988, Shin and Zhou 2003). Nevertheless, studies have seldom theoretically and empirically examined the relative impacts of intrinsic and extrinsic motivations on focal IS behaviors, including the two post-acceptance IS usage behaviors of RTN and INV with which we are concerned.

IS studies have contextualized and applied motivation theory to examine IS use and have shown that both extrinsic (e.g., PU) and intrinsic motivations (e.g., PE) influence IS use (Davis et al. 1992, Venkatesh et al. 2003). However, as we discuss below, intrinsic motivation toward IS has been under-conceptualized; as a result, the importance of intrinsic motivation for IS use is not well understood and has potentially been undervalued relative to extrinsic motivation in promoting post-acceptance IS use.

2.2.1. Perceived Usefulness as Extrinsic Motivation Toward IS Use. The utilitarian view of human nature, positing that individuals' behaviors are strengthened by positive consequences, offers a perspective for understanding the effects of extrinsic motivation on focal behaviors (Bentham 1988, Eisenberger and Cameron 1996). PU is typically viewed as the most important aspect of extrinsic motivation influencing IS use (Davis et al. 1992, Venkatesh et al. 2003). As defined by Davis et al. (1989), PU refers to users' perceptions of whether using IS will effectively enhance their work performance. Over the past two decades, there has been consistent empirical evidence showing that PU is the dominant determinant of IS use (Davis et al. 1989, Legris et al. 2003, Venkatesh et al. 2003). It is understandable that in workplaces, employees would like to use IS if the enhanced performance derived from IS use can help them accrue job-related benefits, including "raises, promotion, bonuses, and other rewards" (Davis et al. 1989, p. 320; Venkatesh and Speier 1999). As such, PU, which focuses on utilitarian considerations, has been recognized as one of the most representative surrogate constructs of extrinsic motivation for IS use. Accordingly, we focus on PU's influence on RTN and INV.

2.2.2. A Rich Conceptualization of Intrinsic Motivation Toward IS Use. PE has typically been viewed as the representative intrinsic motivator for IS use (van der Heijden 2004). Empirical studies have shown that PE promotes technology acceptance and use across contexts, including in educational settings (Davis et al. 1992), game-based training (Venkatesh 1999), home use (Brown and Venkatesh 2005, Hsieh et al. 2008), e-commerce transactions (Kamis et al. 2008), mobile services (Fang et al. 2006), knowledge contribution in e-networks (Wasko and Faraj 2005),

knowledge transfer in IS implementation (Ko et al. 2005), and open-source software project development (Shah 2006).

Admittedly, PE is a salient determinant of individuals' use of technologies. The pleasant sensational experiences of use effectively drive users' interest, ease their cognitive burdens, nurture positive attitudes toward use, and boost use intentions, all of which enhance IS use. Particularly in the case of hedonic IS, the amusement perceived by users can be a critical factor promoting use intentions and behaviors (van der Heijden 2004).

However, social psychology research suggests that across education, work, and sports contexts, intrinsic motivation is comprised not only of hedonic physical sensations (i.e., perceived enjoyment, PE) but also of the pleasure and satisfaction from accomplishment and learning when performing such activities (Deci and Ryan 2002, Maslow 1970, Vallerand 1997). Given that the IS literature on intrinsic motivation has focused solely on physical enjoyment and has excluded the joyful feelings that result from accomplishment and learning (e.g., Hsieh et al. 2008, Thong et al. 2006, van der Heijden 2004), we appropriate the RIM concept from social psychology to the IS context and propose a more comprehensive and precise conceptualization of intrinsic motivation to explain IS usage behaviors in the post-acceptance stage.

In offering a more comprehensive conceptualization of intrinsic motivation toward human behaviors in general, Vallerand and his colleagues suggest that intrinsic motivation consists of three core aspects: intrinsic motivation toward accomplishment, intrinsic motivation to know, and intrinsic motivation to experience stimulation (Vallerand et al. 1989, 1992, 1993, 1997). According to Vallerand, most behavioral studies examine only one of the three intrinsic motivations rather than adopting an integrated perspective. Identified through a meta-analysis, the three constructs incorporate the predominate types of intrinsic motivations in the extant social psychology literature (Vallerand and Briere 1990, Vallerand et al. 1989). Specifically, IMap refers to the pleasure and satisfaction experienced while individuals are trying to solve problems or accomplish something (e.g., Nicholls 1984, White 1959). Note that although IMap is directed by accomplishing some end result, the focus of IMap is still the process of accomplishment and overcoming difficulties (Vallerand 1997). IMkw is the enjoyment individuals experience when learning or exploring things (e.g., Berlyne 1971, Brophy 1987). The last dimension, IMst, pertains to the intensely pleasant feelings associated with performing certain activities (e.g., Csikszentmihalyi 1978, Zuckerman 1979). These definitions and the corresponding measures of the three intrinsic motivations have been

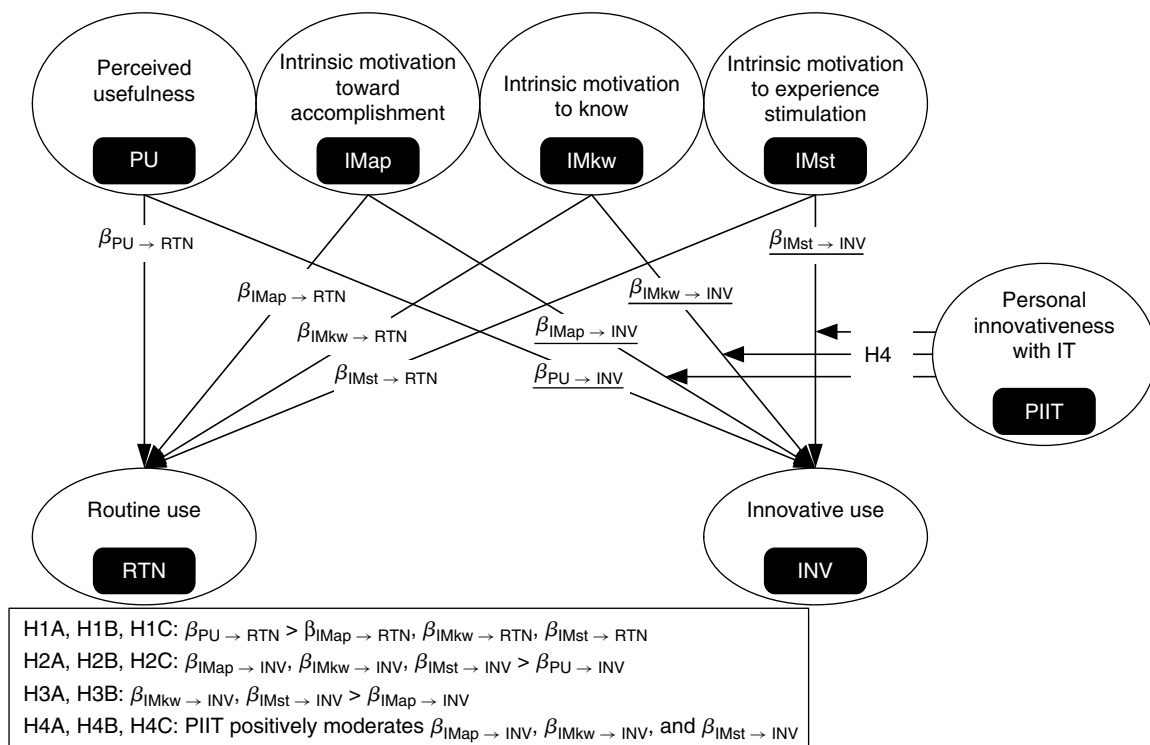
applied in a number of hedonic (e.g., sports) and nonhedonic (e.g., work, academic) contexts (Deci and Ryan 2002, Vallerand 1997, van Yperen and Hagendoorn 2003), thereby supporting the RIM concept's utility for understanding the focal IS usage behaviors (i.e., RTN and INV) of interest in this study.

IMap, IMkw, and IMst are three different types of intrinsic motivations. They are, to different extents, driven by individuals' innate needs, including competence, relatedness, and autonomy (Deci and Ryan 2002, Vallerand 1997). For instance, IMap is stimulated when individuals want to prove their competence and interact effectively and proficiently with the environment (Kowal and Fortier 2000). IMkw is aroused when individuals feel that learning is associated with interactions and connections with coworkers, providing them with a sense of belongingness and satisfying their need for relatedness (Lee et al. 2005, Wegner et al. 2002). IMst is generated by individuals' need for autonomy, as autonomy allows them to freely search for information and enjoy a variety of choices and experiences (DeCharms 1968, Steenkamp and Burgess 2002).

From an alternative view, the three types of intrinsic motivation satisfy different aspects in Maslow's theory of needs (Maslow 1970). First, IMap relates to individuals' desires for esteem and self-actualization. When individuals successfully solve problems, they realize their self-value; when they overcome difficulties, they have a positive evaluation of themselves, as well as their capabilities in performing related activities (Bandura 1997, Gist and Mitchell 1992). Second, IMkw satisfies individuals' needs to reduce uncertainty, which relate to their needs for safety. Individuals tend to explore when they feel unfamiliar with their surrounding environment (White 1959). Hence, it is intuitive for individuals to strive to learn and understand new things when they encounter uncertain situations. Third, IMst is associated with hedonic needs, which belong to the physiological category of Maslow's theory (e.g., Berlyne 1971, Maslow 1970). Overall, this tridimensional view of intrinsic motivation renders a holistic conceptualization and captures the richness of intrinsic motivation in regards to complex human behaviors, such as employees' IS usage behaviors to support their work in the post-acceptance stage.

Accordingly, we propose that intrinsic motivation toward IS use manifests in three ways: IMap, IMkw, and IMst. We define (a) IMap as the pleasure and satisfaction that users experience when solving problems or overcoming difficulties in using IS, (b) IMkw as the pleasure and satisfaction that users experience when learning new things or trying to understand

Figure 1 Research Model and Hypotheses



something new in using IS, and (c) IMst¹ as the pleasure and satisfaction that users experience when interacting with IS. As a whole, these three types of intrinsic motivations capture the RIM concept for IS use. The RIM concept goes beyond PE, which captures only the hedonic aspects of enjoyment but overlooks individuals' innate needs for realizing self-value, such as challenge, accomplishment, curiosity, and learning (Vallerand 1997, Venkatesh 1999). Toward this end, the RIM concept provides the basis for us to develop a rich conceptualization of intrinsic motivation toward IS use.

2.3. Personal Innovativeness with IT

Incorporating personal factors as moderators not only helps to reconcile inconsistent findings but also increases the explanatory power of individual behavior models, as they can provide a more comprehensive explanation about the behavioral phenomenon

of interest (Sun and Zhang 2006, Venkatesh et al. 2003). To attain a more nuanced understanding about the relationship between RIM and INV, we identify employees' personal innovativeness with IT (PIIT), one of the most relevant individual characteristics for understanding IS use (Agarwal 2000, Gallivan et al. 2005), as a plausible moderator. An individual is regarded as being "innovative" when he or she adopts an innovation early on Rogers (2003). Defined as the degree to which an individual is willing to try out a new technology, PIIT characterizes individuals' risk-taking propensity and tolerance of uncertainty during technology use processes (Agarwal and Prasad 1998, Rogers 2003, Thatcher and Perrew 2002) and, for reasons we elaborate on later, can change the influence of each of the three RIM constructs on INV.

3. Research Model and Hypotheses

Our research model is shown in Figure 1. Although both extrinsic and intrinsic motivations could be important for IS use (Davis et al. 1992, Venkatesh et al. 2003), social psychology researchers have suggested that as the three intrinsic motivations differ significantly, their effects may also vary significantly depending on the focal behavior and the context (Vallerand 1997, Vallerand and Briere 1990). Accordingly, we examine the impacts of each of the three RIM constructs, theorize the relative impact among the three RIM constructs and PU on RTN and INV,

¹ IMst is distinct from several related constructs in prior IS literature, including arousal, computer playfulness, flow, and cognitive absorption. IMst relates to users' *motivational tendency* toward using IS because of the enjoyment and hedonic fun in the usage process, arousal is an important component of users' *emotions* that possibly drives IS use (Deng and Poole 2010), computer playfulness captures a concrete *psychometric disposition* that is manifested through users' intellectual interaction with computers (Webster and Martocchio 1992), and flow and cognitive absorption describe users' *cognitive status* when interacting with IS (Agarwal and Karahanna 2000, Webster et al. 1993).

and develop our logic for PIIT moderating the RIM constructs' influence on INV.

To begin with, PU could positively influence both RTN and INV. PU refers to employees' perceptions that using IS can lead to better performance (Davis et al. 1989). PU is regarded as a representative surrogate construct of extrinsic motivation toward IS use, as enhanced performance ultimately contributes to attaining material rewards like payment, promotion, and bonuses (Davis et al. 1992). Indeed, utilitarian rewards are commonly used to encourage positive performance outcomes in organizational contexts (Scott and Podsakoff 1982, Eisenberger 1992). In the post-acceptance stage, when employees perceive that material rewards are attainable via enhanced performance, they would be willing to engage in IS usage behaviors, routine or innovative, that are conducive for performance outcomes. Toward this end, RTN and INV, both of which may enable employees to attain better performance (Saga and Zmud 1994), can help them to accrue utilitarian rewards. Therefore, when employees perceive that instrumental benefits will result from their IS use, they may partake in RTN and INV to support their work.

Next, Ryan and Deci (2000, p. 55) contend that "intrinsic motivation results in high-quality learning and creativity." Learning refers to individuals' attempts to transform prior experience and create new knowledge (Kim 1993, Kolb 1984), and innovation requires individuals to develop promising original ideas and to remain patient during numerous trial-and-error iterations before a new solution emerges (Amabile 1988). Toward this end, intrinsic motivation toward performing a particular behavior induces the spontaneous enthusiasm and interest that enhances individuals' cognitive flexibility and develops their commitment to and perseverance in the performance process (McGraw and McCullers 1979, Shin and Zhou 2003, Vallerand 1997). Specifically, individuals who need to feel a sense of competence are inclined to concentrate on challenging activities and stay perseverant in the face of obstacles as they engage in experimentation for innovative behaviors (Deci and Ryan 2002, Schaefer et al. 1997) (IMap). Additionally, curious individuals are generally excited about devoting effort to learning and exploring, and an extensive knowledge base is one of the critical steps leading to innovation (Greif and Keller 1990, Kurtzberg and Amabile 2001) (IMkw). The heightened interest in an activity itself motivates individuals to surpass formal requirements (Piccolo and Colquitt 2006) and seek creative ways to perform activities that realize their self-value (Amabile 1996) (IMst).

Following the above reasoning, we argue that in the post-acceptance context, the three intrinsic motivations toward IS use can positively contribute to

INV. Specifically, the pleasure derived from overcoming difficulties and solving problems when using IS nurtures employees' concentration and perseverance, which are conducive for experimenting with different ways of using IS (IMap). The satisfaction experienced when learning new things in the IS use process encourages employees to devote their time and effort to improving their technical skills and discovering new ways of using IS (IMkw). Finally, the enjoyment experienced when interacting with IS provides employees with cognitive flexibility, which stimulates alternative ideas for how to use IS creatively (IMst).

Intrinsic motivation could also stimulate RTN. Employees' sense of accomplishment could be satisfied when they successfully repeat usage behaviors that were conducted previously and consider such repetition as a mastery of usage skills (IMap) (Bandura 1984). Repeating prior usage practices could also help employees move farther along the learning curve when the repetition accumulates their usage experience and makes their usage skills more proficient (IMkw) (Argote 1999). The enjoyment feelings in interacting with IS could also create favorable user reactions to the IS (Venkatesh 1999), making employees' routine use less tedious and tiring (IMst). Thus, employees who are intrinsically motivated toward accomplishment, to know, and to experience stimulation may possibly engage in RTN.

Although the above discussion suggests that PU, IMap, IMkw, and IMst may all influence both RTN and INV, these motivations may exert differential impacts on these two IS usage behaviors. To develop a richer understanding of how these various motivations influence the two post-acceptance IS usage behaviors, we theorize and propose comparative hypotheses on the differential (and most salient) effects of PU and the three intrinsic motivations on RTN and INV.

We first theorize that PU, relative to the three intrinsic motivations, should have a stronger impact on RTN. As we elaborate below, PU should enable RTN, and the three RIM constructs can either promote or attenuate RTN. In essence, RTN reflects employees' engagement in repetitive use of implemented IS (Cooper and Zmud 1990, Saga and Zmud 1994). Scholars have long argued that external rewards and punishment (the opposite of rewards) are powerful mechanisms to promote the development of routines (Blau 1964, Kelman 1958). Toward this end, organizational studies have revealed corroborative evidence that economic exchange between employees and organizations effectively promotes repetitious routine behaviors among employees (e.g., Luthans and Kreitner 1985, Scott and Podsakoff 1982). Following this logic, when employees perceive that using IS can be instrumental in supporting work and deriving

material rewards from the organization, they would be motivated to standardize and incorporate IS use as a normal part of their work. Thus, PU can effectively drive RTN.

In addition, as argued earlier, employees' IMap, IMkw, and IMst can contribute to RTN. However, the literature also suggests a contrary viewpoint that the three intrinsic motivations can direct employees' cognitive resources away from regular tasks, preventing them from optimizing their time and effort in exercising standardized and repetitious behaviors like RTN. According to the resource-matching perspective, when the required resources and the available resources do not match, individuals might not maximize their effort in a given activity (Anand and Sternthal 1990, Meyers-Levy and Peracchio 1995). Following this logic, employees who are motivated to strive for achievement in using IS (IMap) may feel that their cognitive resources do not match and are superior to the cognitive resources required to use the IS in a repetitive manner: they would feel that they are overqualified for RTN, thus preventing them from devoting much effort to this type of IS usage behavior. In addition, the spontaneous interest in exploring and learning when using IS (IMkw) and the enjoyment derived from simply interacting with IS for hedonic fun (IMst) may possibly induce employees' experimentation or even entertainment, thereby distracting them from performing RTN (MacKenzie et al. 2001, Starbuck and Webster 1991). In other words, these three intrinsic motivations can influence RTN both positively and negatively. The above discussions suggest that although external motivations promote RTN in a straightforward manner, intrinsic motivations can simulate or stifle RTN, rendering intrinsic motivations, a weaker motivational driver for RTN in relation to extrinsic motivation (e.g., PU).

In short, although RTN could be driven by both extrinsic and intrinsic motivations—given its repetitive nature, which should be facilitated by PU—together with the competing (positive and negative) forces of intrinsic motivations on RTN, we argue that RTN will be more effectively enhanced by external outcomes (i.e., PU) than by the internal pleasure and satisfaction employees experience when overcoming difficulties, learning new things, or having hedonic fun in IS use (IMap, IMkw, and IMst). The above theorizing collectively leads to the following:

HYPOTHESIS 1A (H1A). *Perceived usefulness has a stronger impact on routine use than intrinsic motivation toward accomplishment.*

HYPOTHESIS 1B (H1B). *Perceived usefulness has a stronger impact on routine use than intrinsic motivation to know.*

HYPOTHESIS 1C (H1C). *Perceived usefulness has a stronger impact on routine use than intrinsic motivation to experience stimulation.*

Next, we theorize that the three intrinsic motivations play more important roles than PU in explaining INV. As elaborated earlier, IMap, IMkw, and IMst can positively impact INV. PU may also influence INV in some sense; that is, if employees perceive IS use as being useful for enhancing their performance, they are likely to devote time and effort engaging in INV to advance their work performance (Karahanna and Agarwal 2011).

Extending this logic, we argue that PU has a weaker impact on INV relative to intrinsic motivations. The underlying rationale for this assertion lies in the two contradictory mechanisms associated with how extrinsic motivation influences an individual's behavior: informational and controlling mechanisms (Ryan et al. 1983). Whereas the informational aspect of extrinsic motivation makes individuals aware of their competence and self-determination, which facilitates innovative ideas and learning initiatives, the controlling aspect of extrinsic motivation pressures individuals toward specified outcomes and stifles their creativity and learning interests (Amabile et al. 1986, McGraw 1978, Ryan et al. 1983). In the IS use context, these two mechanisms of PU can generate two forces that simultaneously promote and demote INV. On the one hand, the informational mechanism of PU positively motivates employees to engage in innovative IS use; on the other hand, the control mechanism of PU negatively constrains employees from exploring new ways of using IS. These two competing forces together make PU a less influential driver than intrinsic motivations for INV.

In conclusion, employees who experience joy and satisfaction while overcoming difficulties (IMap), while learning new things (IMkw) during IS use, or while physically interacting with IS (IMst) may display much higher determination, concentration, and flexibility but may feel less pressured when pursuing INV (Deci and Ryan 2002, Vallerand 1997). In relation to the three RIM constructs, PU appears to be less powerful in leading employees to endure the possibly demanding and uncertain process associated with INV. Therefore, we propose the following:

HYPOTHESIS 2A (H2A). *Intrinsic motivation toward accomplishment has a stronger impact on innovative use than perceived usefulness.*

HYPOTHESIS 2B (H2B). *Intrinsic motivation to know has a stronger impact on innovative use than perceived usefulness.*

HYPOTHESIS 2C (H2C). *Intrinsic motivation to experience stimulation has a stronger impact on innovative use than perceived usefulness.*

Although we argue that the three types of intrinsic motivations all stimulate INV, given the distinctive characteristics of the post-acceptance context, we also expect the three types of intrinsic motivations to exert differential influence on INV.

On the one hand, IMap, as noted earlier, concerns the satisfaction and pleasure derived from overcoming difficulties in using IS. In early stages of IS implementation, employees have to overcome technical hurdles. For example, they need to develop the skills to use the IS, familiarize themselves with how to interface the new system with existing systems, and understand data standards and compatibility issues that must be addressed to use the system. In the post-acceptance stage, employees have developed familiarity and experience with the implemented IS (Saga and Zmud 1994) and overcome important difficulties in using the IS to support their work. Such familiarity and experience should also reduce the perceived technological difficulties (Thompson et al. 1994) associated with identifying novel ways of using the system, thereby decreasing the importance of IMap for INV.

On the other hand, employees in the post-acceptance stage are still progressing along the learning curve in discovering potential applications of the implemented IS (Jasperson et al. 2005). As a result, employees' enjoyment in exploration induces them to engage in the learning process and motivates them to identify innovative ways to use IS in the post-acceptance stage (Ahuja and Thatcher 2005, Nambisan et al. 1999) (IMkw). Employees' sensations of pleasure when interacting with IS also allows for cognitive flexibility, which is an important psychological quality for pursuing innovation (Amabile 1988) (IMst). The cognitive flexibility associated with IMst stimulates employees' alternative and creative thinking when they encounter challenges when using IS (Jasperson et al. 2005) (IMst). The above discussion collectively suggests that although all three types of intrinsic motivation can promote INV, the characteristics of the post-acceptance stage create the conditions for IMkw and IMst to play a more important role than IMap in influencing INV. As such, we propose the following:

HYPOTHESIS 3A (H3A). *Intrinsic motivation to know has a stronger impact on innovative use than intrinsic motivation toward accomplishment.*

HYPOTHESIS 3B (H3B). *Intrinsic motivation to experience stimulation has a stronger impact on innovative use than intrinsic motivation toward accomplishment.*

Finally, we propose PIIT as an important individual characteristic that moderates the relationship between RIM and INV. As previously mentioned, PIIT refers to the degree to which an individual is willing to try out

a new technology and characterizes individuals' risk-taking propensity and tolerance of uncertainty during the technology use process (Agarwal and Prasad 1998, Rogers 2003).

As discussed earlier, INV is closely associated with risk and imprecision (Ahuja and Thatcher 2005, Nambisan et al. 1999). When pursuing INV, employees who need to feel a sense of competence tend to be persistent in the face of uncertainties and problems (Deci and Ryan 2002, Schaefer et al. 1997). Accordingly, the tolerance for high uncertainty that is associated with high-PIIT employees (Bommer and Jalajas 1999, Thatcher and Perrewe 2002) should enable them to be even more patient and determined during the numerous rounds of trial and error that accompany INV. Therefore, we expect PIIT to positively moderate the effect of IMap on INV. Second, employees who are high in PIIT are "active information seekers about new ideas" (Hirschman 1980; Rogers 2003, p. 22); thus, curious employees who are high in PIIT should be even more excited about learning, exploring, and engaging in INV. Accordingly, we expect PIIT to positively moderate the effect of IMkw on INV. Third, PIIT epitomizes individuals' risk-taking propensity (Agarwal and Prasad 1998, Rogers 2003); thus, such risk-taking propensity of high-PIIT employees will make them better appreciate, or even enjoy, the risk embedded in pursuing creative ways of using IS, thereby stimulating INV (Amabile 1996, Piccolo and Colquitt 2006). For this reason, we expect PIIT to positively moderate the effect of IMst on INV.

For low-PIIT employees, even if they experience pleasure and satisfaction while overcoming challenges in IS use (IMap), while learning new things during IS use (IMkw), or while physically interacting with IS (IMst), their conservativeness and risk-avoidance characteristics may render the constructive effects derived from the three types of intrinsic motivations less stimulating for them (in relation to high-PIIT employees) in terms of pursuing INV. The above discussion leads us to posit the following:

HYPOTHESIS 4A (H4A). *Personal innovativeness with IT positively moderates the impact of intrinsic motivation toward accomplishment on innovative use.*

HYPOTHESIS 4B (H4B). *Personal innovativeness with IT positively moderates the impact of intrinsic motivation to know on innovative use.*

HYPOTHESIS 4C (H4C). *Personal innovativeness with IT positively moderates the impact of intrinsic motivation to experience stimulation on innovative use.*

4. Model and Hypothesis Tests

Because we are appropriating the RIM concept to the IS use context, we conducted two preliminary

studies to develop and validate the measures of the three RIM constructs. In these two measurement validation studies—which included 165 employees using business intelligence systems and 244 employees using customer support systems, respectively—we established the sound psychometric properties of the three RIM constructs. (See the detailed analysis in Appendix A in the online supplement.)² We then proceeded to test the research model and hypotheses in our main empirical study.

4.1. Site and Sample

In the main empirical study, we chose BIS as the target system to test the model and the hypotheses. BIS are representative complex IS and are rated among the top 10 strategic technologies (Gartner 2009). BIS are data-driven decision-support systems that integrate data gathering, data storage, and knowledge management with complex analytical functions for decision making and strategic planning (Negash and Gray 2008). Organizations devote considerable resources and effort to implementing BIS to leverage their business value and enhance competitive advantage (Davenport et al. 2010, Negash and Gray 2008). BIS allow employees to apply a variety of analytical functions to analyze large volumes of data, which are typically drawn on or refined from data warehouses of internal and external data, and the results from these analyses are used for organizations' strategic planning and decision making (Negash and Gray 2008).

The official study was conducted at one of the largest Chinese telecommunication service organizations. (This site is different from the two sites used in the two preliminary measurement validation studies.) At the time of data collection, the organization had implemented their BIS for about 18 months, well beyond the typical 8–12 month acceptance timeframe for major IS implementation initiatives (Gattiker and Goodhue 2005, Morris and Venkatesh 2010). As further confirmed by the top management, the BIS is a key system for the organization; the use of the system had been well integrated as a normal part of employees' work routine, though its use had not attained its fullest potential. This is consistent with empirical evidence that in the post-acceptance stage, complex organizational IS can be used on a regular basis but may not be utilized to its fullest potential (Boudreau 2003, Hsieh and Wang 2007). Moreover, the facts that the mean value of employees' prior use time (PRI) (mean = 17.4 months) was similar to the time of implementation (18 months) and that employees reported relatively high mean values of perceived ease of use (PEOU) (mean = 5.05,

reported in Table 2) and computer self-efficacy (CSE) (mean = 5.11, Table 2) suggest that employees had accumulated significant usage experience and developed familiarity with the BIS.³

Our subjects were marketing analysts who used the implemented BIS to analyze customer, product, service, and sales data; monitor competitors' activities; and observe market conditions and trends in the industry to fulfill their work responsibilities, which included assessing the firm's performance, understanding competitive environments, and suggesting ensuing marketing strategies. Corresponding to our theorizing that employees can engage in both RTN and INV in the post-acceptance stage, our in-depth interviews with the organization's senior managers revealed that analysts had significant discretion in the extent to which they (a) standardized and integrated BIS use as a normal part of their work (RTN) and (b) discovered innovative ways to use the BIS to support their work (INV). Our follow-up interviews with 15 analysts further confirmed that, indeed, they had control over, as well as varied significantly in, the extent to which they pursued RTN and INV to support their work. During the interviews, we observed that there was considerable variance in the extent to which employees' used the BIS to generate standardized reports on a routine basis. The analysts also indicated that the complex functions embedded in the BIS together with the large volumes of data permitted them to apply the BIS innovatively to support their work to varying degrees. Further, we also expected the analysts in our empirical context to display sufficient variance in the four types of motivations toward using the BIS. The huge data source together with the wide variety of the analytical functions in the BIS could have stimulated and satisfied the analysts' need for a sense of accomplishment (IMap), interest in learning (IMkw), and feelings of enjoyment when interacting with the BIS (IMst). At the same time, the functional potential of the BIS would provide the analysts with opportunities to enhance their work performance, thereby attaining external benefits (PU).⁴

³ Our analysis results, as delineated later, also reveal that PEOU had no significant impact on either RTN or INV (Table 4). Prior studies have indicated that PEOU's impact on IS usage behaviors is non-significant when users have gained sufficient usage experience and are familiar with the system (e.g., Venkatesh et al. 2003, Venkatesh and Bala 2008). In this study, the insignificant influence of PEOU on RTN and INV suggests that employees have gained significant experience and developed familiarity with the implemented BIS.

⁴ Our interview with the analysts and their managers also confirmed that there were no explicit rewards for either RTN or INV. Further, when employees' behaviors are difficult to be observed (Ouchi 1979), organizations usually evaluate and reward employees based on their outcomes (Davenport 2005). Similarly, in our investigative context, the organization rewarded employees based on their work performance, rather than their BIS usage behaviors (e.g., RTN and INV).

² An online supplement to this paper is available as part of the online version at <http://dx.doi.org/10.1287/isre.1120.0456>.

Table 2 Descriptive Statistics and Psychometric Properties

	Mean	Standard deviation	RTN	INV	IMap	IMkw	IMst	PU	PEOU	PIIT	CSE
RTN	5.15	1.12	0.95								
INV	4.73	1.05	0.25	0.75							
IMap	5.06	0.99	0.22	0.14	0.83						
IMkw	4.63	1.08	0.23	0.23	0.58	0.86					
IMst	4.87	1.12	0.23	0.22	0.25	0.28	0.90				
PU	5.39	0.88	0.39	0.14	0.32	0.28	0.33	0.84			
PEOU	5.05	0.88	0.22	0.09	0.32	0.28	0.23	0.38	0.76		
PIIT	5.41	0.89	0.11	0.08	0.17	0.14	0.14	0.12	0.14	0.78	
CSE	5.11	1.04	0.20	0.08	0.22	0.13	0.19	0.33	0.43	0.17	0.80
Composite reliability			0.98	0.90	0.94	0.95	0.97	0.95	0.91	0.92	0.92
Cronbach's alpha			0.97	0.83	0.90	0.91	0.95	0.94	0.85	0.86	0.88

Notes. The diagonal elements are AVEs; the off-diagonal elements are the squared correlations among factors. For discriminant validity, the diagonal elements should be larger than off-diagonal elements.

RTN: routine use; INV: innovative use; IMap: intrinsic motivation toward accomplishment; IMkw: intrinsic motivation to know; IMst: intrinsic motivation to experience stimulation; PU: perceived usefulness; PEOU: perceived ease of use; PIIT: personal innovativeness with IT; CSE: computer self-efficacy.

In addition, our interviews with the analysts and their managers confirmed that the analysts' assigned work remained stable within the period of investigation. A survey instrument was developed for data collection. Questionnaire translation and back-translation between English and Chinese were carried out independently by two certified professional translators (Brislin et al. 1973). We first invited 35 employees to complete the questionnaire, and minor modifications were made according to their comments. Then, we administered the questionnaires to 217 randomly sampled subjects and received 193 responses. (See the sample demographics in Appendix B in the online supplement.)

4.2. Measures

As reported in Appendices A and C (online supplement), we adapted the RIM measures from prior literature and first validated them in the two preliminary studies. With this backdrop, for the main study, we assessed IMap (three items) and IMkw (three items) by adapting items from Vallerand (Vallerand 1997, Vallerand et al. 1997, van Yperen and Hagedoorn 2003), and we evaluated IMst (three items) by using Davis et al. (1992) measures for PE. (We elaborate in Appendix A1 in the online supplement, on our specification of the RIM constructs' measurement items.) We measured PU (four items) with items adapted from Davis (1989) and Davis et al. (1989), as well as PIIT (three items) with items adapted from Agarwal and Prasad (1998).

Measures for RTN (three items) were adapted from Saga and Zmud (1994), Schwarz (2003), and Sundaram et al. (2007). For INV (three items), we adapted the measures for trying to innovate with IT by Ahuja and Thatcher (2005) and intention to explore by Karahanna and Agarwal (2011). Although the measures for trying to innovate with IT and intention

to explore describe users' discovery of novel ways to use IS, these measures primarily focus on "trying" and "intentions," respectively, instead of actual usage behavior. Accordingly, we adapted these measures to focus on the actual usage behavior. To ensure RTN and INV were both evaluated with respect to the employees' work, we explicitly assessed employees' IS use to support their work.

To account for alternative explanations, we also controlled for important factors that may affect IS use, including age (AGE), education (EDU), gender (GEN), prior use time (PRI), tenure (TEN) (Agarwal and Prasad 1999), perceived ease of use (PEOU) (three items) (Davis et al. 1989, Venkatesh et al. 2003), and computer self-efficacy (three items) (Compeau and Higgins 1995, Venkatesh et al. 2003).

4.3. Results of Hypothesis Tests

We used partial least squares (PLS), a component-based structural equation modeling technique, for data analysis. PLS is especially suitable for theoretical development purposes for which the objective is to maximize the explained variance in the outcome variables (Chin 1998b, Gefen and Straub 2005). We chose SmartPLS 2.0 as the analytical software (Ringle et al. 2005) to evaluate the research model and then tested the hypotheses.

4.3.1. PLS Results for the Research Model.

Table 2 shows the descriptive statistics, composite reliability, Cronbach's alpha, and average variance extracted (AVE) for all constructs in the research model. The values of Cronbach's alpha and composite reliabilities were all higher than the recommended 0.707 (Nunnally 1994), and the values of AVE were all above 0.50 (Fornell and Larcker 1981), supporting internal consistency and convergent validity. Discriminant validity was also supported because

Table 3 Item Loadings and Cross-Loadings

		RTN	INV	IMap	IMkw	IMst	PU	PEOU	PIIT	CSE
Routine use	RTN1	0.969	0.491	0.464	0.470	0.465	0.647	0.498	0.336	0.470
	RTN2	0.979	0.514	0.442	0.468	0.458	0.605	0.468	0.329	0.424
	RTN3	0.971	0.519	0.460	0.458	0.479	0.567	0.425	0.308	0.431
Innovative use	INV1	0.520	0.903	0.417	0.482	0.503	0.452	0.312	0.277	0.316
	INV2	0.479	0.930	0.368	0.455	0.458	0.379	0.338	0.300	0.320
	INV3	0.319	0.752	0.221	0.337	0.281	0.192	0.156	0.159	0.139
Intrinsic motivation toward accomplishment	IMap2	0.426	0.327	0.911	0.698	0.433	0.505	0.515	0.368	0.410
	IMap3	0.426	0.355	0.905	0.665	0.416	0.512	0.490	0.342	0.439
	IMap4	0.426	0.411	0.917	0.718	0.508	0.520	0.555	0.417	0.436
Intrinsic motivation to know	IMkw1	0.471	0.469	0.641	0.891	0.518	0.490	0.468	0.349	0.327
	IMkw2	0.411	0.449	0.702	0.944	0.464	0.468	0.484	0.353	0.338
	IMkw3	0.441	0.464	0.704	0.937	0.481	0.497	0.518	0.343	0.355
Intrinsic motivation to experience stimulation	IMst1	0.499	0.460	0.473	0.496	0.957	0.594	0.480	0.391	0.434
	IMst2	0.427	0.475	0.486	0.498	0.949	0.550	0.457	0.369	0.425
	IMst3	0.441	0.477	0.463	0.516	0.947	0.508	0.447	0.330	0.388
Perceived usefulness	PU1	0.582	0.389	0.524	0.491	0.530	0.928	0.570	0.361	0.526
	PU2	0.552	0.402	0.466	0.483	0.519	0.909	0.549	0.259	0.539
	PU3	0.592	0.374	0.499	0.458	0.545	0.909	0.559	0.324	0.511
	PU4	0.557	0.351	0.574	0.492	0.529	0.911	0.579	0.313	0.552
Perceived ease of use	PEOU1	0.479	0.319	0.553	0.491	0.475	0.566	0.920	0.371	0.639
	PEOU2	0.376	0.302	0.480	0.502	0.411	0.523	0.875	0.265	0.489
	PEOU3	0.388	0.223	0.460	0.394	0.379	0.530	0.826	0.371	0.608
Personal innovativeness with IT	PIIT1	0.321	0.250	0.403	0.314	0.351	0.354	0.382	0.886	0.423
	PIIT2	0.265	0.286	0.352	0.355	0.342	0.270	0.312	0.889	0.348
	PIIT3	0.297	0.244	0.339	0.333	0.322	0.285	0.322	0.877	0.332
Computer self-efficacy	CSE1	0.456	0.337	0.429	0.357	0.411	0.568	0.626	0.377	0.916
	CSE2	0.366	0.291	0.452	0.331	0.406	0.522	0.628	0.319	0.932
	CSE3	0.390	0.203	0.382	0.297	0.355	0.462	0.519	0.430	0.837

Notes. Although the cross-loadings for IMap and IMkw are relatively high, the differences between loadings on principal factors and on other constructs are all higher than the threshold (i.e., 0.1) suggested by Gefen and Straub (2005) for how to evaluate item cross-loadings in PLS results. In fact, only two out of the 224 cross-loading differences were between 0.1 and 0.2; all other cross-loading differences were higher than 0.2. We also performed exploratory factor analysis and found a similar factor structure with eigenvalues ranging from 1.245 to 12.647 for the constructs. To be conservative, we further conducted CFA using AMOS 17. Because the sample size ($N = 193$) is below the required 250 for CFA (Hair et al. 1998), following Bollen and Stine (1992), we performed a bootstrapping simulation by randomly generating 2,000 sets of samples and then testing them against the measurement model. The resulting Bollen-Stine P -value ($p = 0.130$) was higher than the required 0.05, suggesting acceptable measurement model fit.

(1) the AVE value of each construct was higher than its squared correlations with any other construct (Table 2) and (2) item loadings on their own construct were significantly higher than the cross-loadings on any other construct (Table 3) (Chin 1998a, Gefen and Straub 2005).^{5,6} The above evidence suggests accept-

able psychometric properties for all constructs in our research model. Table 4 reports the results of the PLS analysis.

4.3.2. Results of Path Comparison Tests. We adopted the path comparison method proposed by Cohen et al. (2003) to test H1A, H1B, H1C, H2A, H2B, H2C, H3A, and H3B (Table 5). (See the detailed procedures in Appendix E in the online supplement.) We found the following: (1) PU had a stronger impact than any of the three RIM constructs on RTN and (2) IMkw and IMap each had a stronger impact than either PU or IMap on INV. Therefore, H1A, H1B, H1C, H2B, H2C, H3A, and H3B were all supported. For H2A, however, we did not find a significant difference between the impacts of IMap and PU on INV.

4.3.3. Results of Moderation Tests. To examine the moderation hypotheses (i.e., H4A, H4B, and

harmful multicollinearity (Diamantopoulos and Siguaaw 2006, Petter et al. 2007). The conditional number equaled 12.799, well below the rule of thumb of 30 (Belsley et al. 1980, Grewal et al. 2004).

⁵ The first item of IMap was dropped because of high cross-loadings.

⁶ We also performed covariance-based confirmatory factor analysis (CFA) using AMOS 17 for the three RIM constructs. Discriminant validity is supported when the original measurement model displays significantly better model fit than any other possible model where the correlation between any pair of constructs is constrained to one (Segars 1997, Gefen et al. 2003). In our study, the measurement model of the three RIM constructs displayed good model fit ($\chi^2 = 27.355$, $df = 24$, CFI = 0.998, RMSEA = 0.027, SRMR = 0.0334), whereas the model fit decreased significantly when constraining the correlation between any two RIM constructs to one. The χ^2 change ranged from 6.480 to 17.222 ($p < 0.01$ for a change with one degree of freedom), suggesting that the three-factor RIM model outperformed all other models. Further, the variance inflation factor (VIF) values of the three RIM constructs ranged from 1.432 to 2.579, indicating no

Table 4 PLS Results

	Routine use (RTN)	Innovative use (INV)
Intrinsic motivation toward accomplishment (IMap)	-0.026 $t = 0.213$	0.046 $t = 0.385$
Intrinsic motivation to know (IMkw)	0.158* $t = 1.991^*$	0.351** $t = 3.315^{**}$
Intrinsic motivation to experience stimulation (IMst)	0.084 $t = 0.926$	0.315** $t = 2.933^{**}$
Perceived usefulness (PU)	0.419** $t = 3.903^{**}$	0.073 $t = 0.852$
Control variables		
Perceived Ease of Use (PEOU)	0.032 $t = 0.343$	-0.113 $t = 1.053$
Personal Innovativeness with IT (PIIT)	0.065 $t = 0.749$	0.043 $t = 0.468$
Computer Self-Efficacy (CSE)	0.090 $t = 0.914$	0.045 $t = 0.461$
Age (AGE)	-0.095+ $t = 1.662^+$	-0.045 $t = 0.766$
Education (EDU)	-0.079 $t = 1.154$	0.110+ $t = 1.725^+$
Gender (GEN)	-0.006 $t = 0.107$	0.041 $t = 0.663$
Prior Use Time (PRI)	-0.031 $t = 0.572$	0.022 $t = 0.367$
Tenure (TEN)	0.051 $t = 0.760$	-0.006 $t = 0.094$
R ² (%)	45.0	36.7

Note. Standardized path coefficients are reported here.
*: $p < 0.05$, **: $p < 0.01$, +: $p < 0.1$, two-tailed test.

H4C), we first multiplied construct scores to create interaction terms and then added the interaction terms to the model (Goodhue et al. 2007, Tanriverdi 2006). To minimize potential multicollinearity, we mean centered the construct scores prior to creating the interaction terms (Aiken and West 1991). We also checked the VIF values for each item entered for analysis; all VIF values were lower than the threshold of 3.3, suggesting no harmful multicollinearity (Diamantopoulos and Siguaw 2006, Petter et al. 2007). Table 6 reports the moderation test results (main effects and interaction effects). (See the detailed stepwise test in Appendix F in the online supplement.) Consistent with Aiken and West's (1991) recommendations to interpret interaction effects, we plotted the interaction diagrams at different levels of the moderator variable, PIIT. (The path coefficient and significance level for the effect of each RIM constructs on INV at different levels of PIIT are reported in Table 6. Interaction diagrams are shown in Figures 2–4.) We found that PIIT positively moderated the positive

Table 6 Moderation Results

Dependence Variable: Innovative Use (INV)		
Main Effects		
IMap	0.046	$t = 0.637$
IMkw	0.328**	$t = 3.386^{**}$
IMst	0.265**	$t = 3.056^{**}$
PIIT	0.089	$t = 0.737$
Moderation Effects		
IMap * PIIT	0.159*	$t = 1.951^*$
IMkw * PIIT	0.255**	$t = 2.626^{**}$
IMst * PIIT	0.250**	$t = 2.564^{**}$

Notes. One-tailed test were performed as directional moderation effects were hypothesized.

Standardized path coefficients are reported here.

*: $p < 0.05$, **: $p < 0.01$, +: $p < 0.1$.

effects of all three RIM constructs on INV, thus supporting H4A, H4B, and H4C.

4.4. Post Hoc Analysis Results

We further examined the differential impact of each motivational factor (i.e., the three RIM constructs and

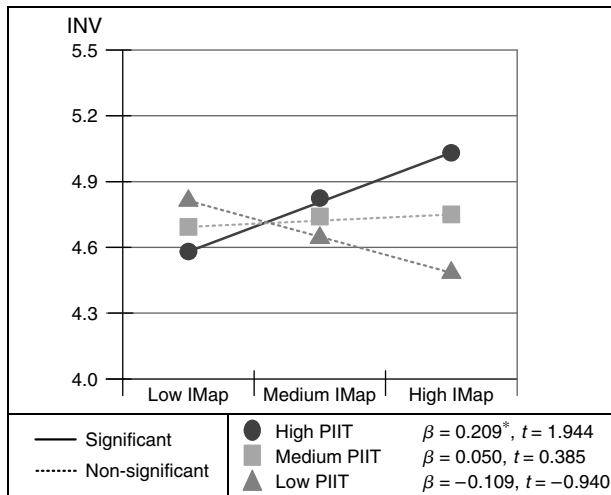
Table 5 Results of Hypothesis Tests

	Path coefficient	Results	Conclusion
RTN			
H1A	$\beta_{\text{IMap} \rightarrow \text{RTN}}$ vs. $\beta_{\text{PU} \rightarrow \text{RTN}} = -0.026$ vs. 0.419^{**}	$t = -3.516^{**}$	(✓) $\beta_{\text{IMap} \rightarrow \text{RTN}} < \beta_{\text{PU} \rightarrow \text{RTN}}$
H1B	$\beta_{\text{IMkw} \rightarrow \text{RTN}}$ vs. $\beta_{\text{PU} \rightarrow \text{RTN}} = 0.158^*$ vs. 0.419^{**}	$t = -2.494^{**}$	(✓) $\beta_{\text{IMkw} \rightarrow \text{RTN}} < \beta_{\text{PU} \rightarrow \text{RTN}}$
H1C	$\beta_{\text{IMst} \rightarrow \text{RTN}}$ vs. $\beta_{\text{PU} \rightarrow \text{RTN}} = 0.084$ vs. 0.419^{**}	$t = -3.133^{**}$	(✓) $\beta_{\text{IMst} \rightarrow \text{RTN}} < \beta_{\text{PU} \rightarrow \text{RTN}}$
INV			
H2A	$\beta_{\text{IMap} \rightarrow \text{INV}}$ vs. $\beta_{\text{PU} \rightarrow \text{INV}} = 0.046$ vs. 0.073	$t = -1.050$ (n.s.)	(*) No differences detected
H2B	$\beta_{\text{IMkw} \rightarrow \text{INV}}$ vs. $\beta_{\text{PU} \rightarrow \text{INV}} = 0.351^{**}$ vs. 0.073	$t = 2.348^{**}$	(✓) $\beta_{\text{IMkw} \rightarrow \text{INV}} > \beta_{\text{PU} \rightarrow \text{INV}}$
H2C	$\beta_{\text{IMst} \rightarrow \text{INV}}$ vs. $\beta_{\text{PU} \rightarrow \text{INV}} = 0.315^{**}$ vs. 0.073	$t = 1.674^*$	(✓) $\beta_{\text{IMst} \rightarrow \text{INV}} > \beta_{\text{PU} \rightarrow \text{INV}}$
H3A	$\beta_{\text{IMap} \rightarrow \text{INV}}$ vs. $\beta_{\text{IMkw} \rightarrow \text{INV}} = 0.046$ vs. 0.351^{**}	$t = -2.492^{**}$	(✓) $\beta_{\text{IMap} \rightarrow \text{INV}} < \beta_{\text{IMkw} \rightarrow \text{INV}}$
H3B	$\beta_{\text{IMap} \rightarrow \text{INV}}$ vs. $\beta_{\text{IMst} \rightarrow \text{INV}} = 0.046$ vs. 0.315^{**}	$t = -2.494^{**}$	(✓) $\beta_{\text{IMap} \rightarrow \text{INV}} < \beta_{\text{IMst} \rightarrow \text{INV}}$

Note. One-tailed tests were performed as the directional differences were hypothesized.

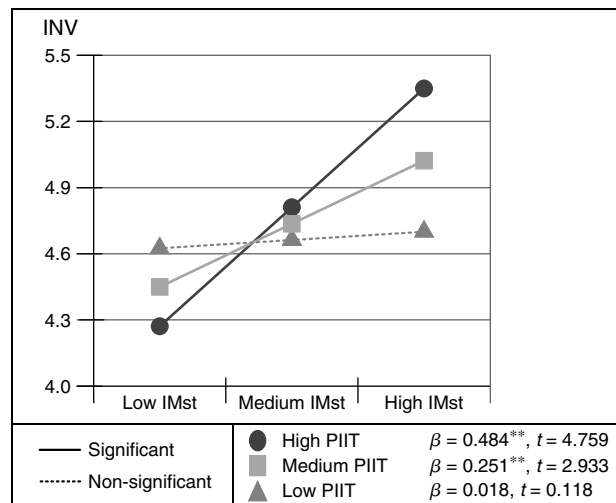
*: $p < 0.05$, **: $p < 0.01$, +: $p < 0.1$, n.s.: nonsignificant.

Figure 2 Interaction Diagram: PIIT moderates IMap → INV



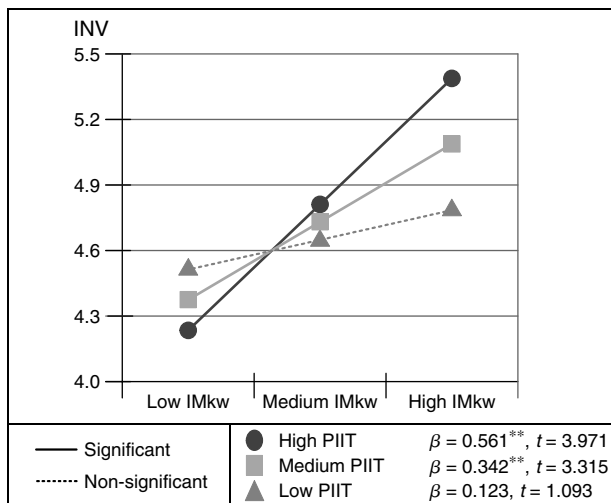
Note. Unstandardized path coefficients are reported here.
 *: $p < 0.05$, **: $p < 0.01$, +: $p < 0.1$, one-tailed test.

Figure 4 Interaction Diagram: PIIT moderates IMst → INV



Note. Unstandardized path coefficients are reported here.
 *: $p < 0.05$, **: $p < 0.01$, +: $p < 0.1$, one-tailed test.

Figure 3 Interaction Diagram: PIIT moderates IMkw → INV



Note. Unstandardized path coefficients are reported here.
 *: $p < 0.05$, **: $p < 0.01$, +: $p < 0.1$, one-tailed test.

PU) on RTN and INV. (See the detailed procedures in Appendix G in the online supplement.) The results in Table 7 suggest that (1) IMap had no differential impact on RTN and INV, (2) IMkw and IMst both exerted a stronger influence on INV than on RTN, and (3) PU's impact on RTN was stronger than its impact on INV. We interpret these differential effects in the discussion section.

Moreover, because all of the data were obtained from employees through a survey method, we assessed common method bias (CMB) by using the Harman's single factor test (Podsakoff and Organ 1986) and the common method variance factor test (Podsakoff et al. 2003). First, in Harman's single factor test, six factors with eigenvalues greater than

one were generated with no single factor accounting for the majority of the variance in the items. Second, in the common method variance factor test, the factor loadings remained stable across the original measurement model and the measurement model with a common method variance factor (Appendix H in the online supplement). In addition, the path coefficients together with the corresponding significance levels remained almost unchanged between the original structural model and the structural model with the common method variable factor added; the maximum change in standardized path coefficients between the two models was only 0.009. The results of the hypothesis test also remained qualitatively the same. The evidence collectively suggests that CMB was not a serious validity threat.

5. Discussion

Our findings reveal important insights for conceptualizing both post-acceptance IS usage behaviors and intrinsic motivation toward IS use, as well as for understanding the relative importance of intrinsic motivation and extrinsic motivation for routine use and innovative use (Table 8).

5.1. Implications for Theory

5.1.1. Conceptualization of Post-Acceptance IS Use Behaviors. Our study suggests that employees engage in *diverse IS usage behaviors in the post-acceptance stage* and that routine use and innovative use, two important post-acceptance behaviors, require understanding with regard to their distinctions and motivational drivers (column 1, Table 8). IS use is one of the most critical elements in the causal

Table 7 Post Hoc Analysis Results

IV	Path coefficient	Results	Conclusion
IMap	$\beta_{IMap \rightarrow RTN}$ vs. $\beta_{IMap \rightarrow INV} = -0.026$ vs. 0.046	$t = 0.178$ (n.s.)	No differences detected
IMkw	$\beta_{IMkw \rightarrow RTN}$ vs. $\beta_{IMkw \rightarrow INV} = 0.158^*$ vs. 0.351^{**}	$t = 1.653^*$	$\beta_{IMkw \rightarrow RTN} < \beta_{IMkw \rightarrow INV}$
IMst	$\beta_{IMst \rightarrow RTN}$ vs. $\beta_{IMst \rightarrow INV} = 0.084$ vs. 0.315^{**}	$t = 2.350^{**}$	$\beta_{IMst \rightarrow RTN} < \beta_{IMst \rightarrow INV}$
PU	$\beta_{PU \rightarrow RTN}$ vs. $\beta_{PU \rightarrow INV} = 0.419^{**}$ vs. 0.073	$t = -4.098^{**}$	$\beta_{PU \rightarrow RTN} > \beta_{PU \rightarrow INV}$

Notes. One-tailed tests were performed as the directional differences were expected. IV: independent variable.

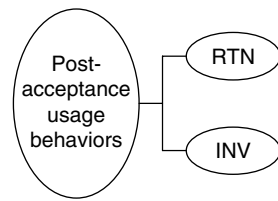
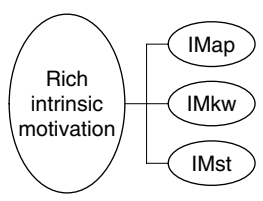
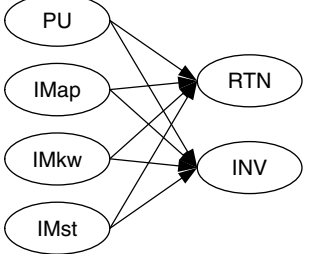
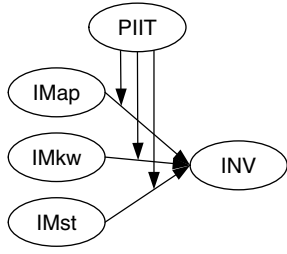
*: $p < 0.05$, **: $p < 0.01$, +: $p < 0.1$, n.s.: nonsignificant.

chain from IS implementation to individual performance and organizational success (DeLone and McLean 1992, Seddon 1997). Prior IS literature has commonly treated IS use as a broad behavioral category and has examined it in the forms of duration or frequency (e.g., van der Heijden 2004, Venkatesh et al. 2003). Though these assessment approaches capture the quantity of a user’s engagement with IS, they overlook the pluralistic nature of IS use in the post-acceptance phase and do not make important qualitative distinctions between IS behaviors. We are among the first to juxtapose routine and innovation behaviors in the IS use context, which enables us to make important conceptual distinctions between routine use and innovative use in terms of their standardization or innovation orientation. The twin learning concepts of exploration and exploitation, typically studied at the organizational level, are also

useful to enrich our understanding of individual-level post-acceptance usage behaviors in that routine use and innovative use, respectively, utilize existing and create new knowledge regarding how an implemented system can be used by employees to support their work (Cohen and Levinthal 1990, Gupta et al. 2006). Finally, at the measurement level, we extend the validity of measures of routine use and innovative use from the western (Ahuja and Thatcher 2005, Schwarz 2003, Sundaram et al. 2007) to the eastern context.

5.1.2. A Multidimensional Perspective of Intrinsic Motivation Toward IS Use. We advance the IS motivation literature by introducing a multidimensional conceptualization of rich intrinsic motivation toward IS use (column 2, Table 8). Intrinsic motivation toward IS use has mostly been conceptualized as perceived enjoyment, leading to the unbalanced attention

Table 8 Theoretical Implications

Two important post-acceptance behaviors	Enriched conceptualization of intrinsic motivation toward IS use	Differential influence of IS motivations on post-acceptance behaviors	Moderation effects of PIIT
			
<ul style="list-style-type: none"> • Conceptualized post-acceptance usage behaviors (RTN and INV) that differ in standardization versus innovation orientation, as well as in learning orientation, in the IS use context • Extended measurement validity of the two post-acceptance usage behaviors from the western context to the eastern context 	<ul style="list-style-type: none"> • Contextualized the RIM concept from social psychology to the IS use context • Adapted and validated measures for the three RIM constructs using three empirical studies 	<ul style="list-style-type: none"> • Identified the relative importance of the three RIM constructs and PU on RTN and INV • Discovered PU had a stronger positive impact than the three RIM constructs on RTN; IMkw and IMst had a stronger positive impact than PU and IMap on INV • Discovered PU’s effect on RTN was stronger than on INV; the effects of IMkw and IMst on INV were stronger than on RTN • Discovered IMap had no significant impact on RTN and INV 	<ul style="list-style-type: none"> • Discovered that PIIT positively moderated the impact of each of the three RIM constructs on INV • Revealed that when PIIT is low, none of the three RIM constructs significantly influences INV, suggesting that PIIT and IS motivations need to be managed together

Downloaded from informs.org by [158.132.161.240] on 08 August 2014, at 00:29. For personal use only, all rights reserved.

between intrinsic and extrinsic motivations in prior IS studies (van der Heijden 2004). We are among the earliest studies to identify intrinsic motivation as a key predictor of post-acceptance behaviors and, more importantly, to appropriate the RIM concept to the IS use context. Drawing on the intrinsic motivation literature in social psychology (Vallerand 1997, Vallerand et al. 1997), we argue that intrinsic motivation toward IS use is comprised of enjoyment not only from the activity of using IS but also from the satisfaction and fulfillment that users experience when overcoming difficulties or learning new things in using IS. By validating the RIM concept across two types of IS (i.e.,—BIS and—CSS) and across employees at three telecom service organizations, we extend the generalizability of the RIM concept beyond past studies in social psychology, which were conducted in other contexts, such as education (Vallerand et al. 1993), sports (Pelletier et al. 1995), and general workplaces (van Yperen and Hagedoorn 2003), and were not focused on IS behaviors and motivations.

5.1.3. Elaborating the Relative Influence of Intrinsic Motivation and Extrinsic Motivation. We also contribute to our understanding of the relationships between IS use motivations and IS usage behaviors in the post-acceptance stage. With the enriched conceptualization of routine use and innovative use and intrinsic motivation toward IS use, we identify *the differential influence of IS motivations on post-acceptance behaviors* (column 3, Table 8). We found that PU had a stronger impact than any of the three RIM constructs on RTN (H1A, H1B, H1C) and that IMkw and IMst each had a stronger impact than PU on INV (H2B, H2C). Perceived usefulness, thereby capturing the utilitarian aspect of extrinsic motivation, has been regarded as the most important determinant for general IS use (Davis et al. 1989, 1992; Legris et al. 2003; Venkatesh et al. 2003). Although it is true that IS use in workplaces is influenced by utilitarian considerations (van der Heijden 2004), our study identifies the critical roles of intrinsic motivation in continuous learning and hedonism (IMkw and IMst) in stimulating innovative use when employees engage in IS use above and beyond the minimal requirements. More broadly, we advance our knowledge of the relative importance of intrinsic and extrinsic motivations toward IS use for post-acceptance usage behaviors. Several organizational studies suggest that compared to extrinsic motivation, intrinsic motivation promotes more constructive performance within organizations (e.g., Amabile 1985, Vallerand 1997). However, our findings suggest that the importance of intrinsic motivation relative to extrinsic motivation is a function of employees' focal behaviors (Bandura 1997). In particular, although intrinsic motivation (in terms of RIM) is more influential in stimulating innovative use in

relation to extrinsic motivation (in terms of PU), it is less influential for routine use.

In addition, our findings have implications for our *theoretical understanding regarding the relationship between rich intrinsic motivation and innovative use*. First, IMkw and IMst had a stronger impact than IMap on INV in the post-acceptance stage (H3A, H3B). We suggest that the stage of IS implementation is an important contextual consideration, as it can change the relationships among substantive constructs. In general, although contextual factors are important for understanding behavioral phenomena, they have received limited attention in organizational research (Johns 2006). By the post-acceptance stage, employees should have overcome important technical hurdles and developed familiarity in using the implemented IS to support their daily work (Jasperson et al. 2005, Saga and Zmud 1994). Such familiarity should also reduce difficulties in employees' ability to pursue innovative IS use, making IMap less influential for INV than either IMkw or IMst in the post-acceptance stage. As such, we are among the first to extend prior intrinsic motivation literature to IS settings and to show that the impacts of different types of intrinsic motivations on individuals' IS behaviors may be a function of the IS implementation stage (Vallerand et al. 1993, Vallerand 1997). Second, PIIT—an important individual characteristic—moderated the influence of the three RIM constructs on INV (H4A, H4B, H4C) (column 4, Table 8). For employees with high PIIT, their high propensity toward IT innovation amplifies the influence of all three types of intrinsic motivations on innovative use. However, even when employees are intrinsically motivated, their innovative usage behaviors are suppressed by their low PIIT to a point that none of the three intrinsic motivations influenced innovative use when employees' PIIT was low. Although the literature has examined the impacts of both PIIT and intrinsic motivation on IS use (Agarwal and Prasad 1998, Davis 1989), our results suggest that PIIT enhances the positive influence of intrinsic motivation on innovative use. The influence of the motivations from accomplishment, knowing, and stimulation on innovative use are *all* reinforced when the individual takes risks and is more likely to explore ingenious but uncertain ways to use IS.

Our post hoc analysis provides further insights into the relative effects of each of the four motivation factors (i.e., the three types of intrinsic motivations and PU) on routine use and innovative use. Specifically, we found that (1) PU had a stronger impact on RTN than on INV, (2) IMkw and IMst both had a weaker impact on RTN than on INV, and (3) IMap had nonsignificant impacts on both RTN and INV. Findings 1 and 2 offer corroborative evidence supporting the theorization that routine use and innovative

use, respectively, differ in standardization or innovation orientation, as well as in learning orientation, and, therefore, are distinct behaviors that coexist in the post-acceptance IS use context. This explains why we found the relative influence of PU (i.e., $\beta_{PU \rightarrow RTN} > \beta_{PU \rightarrow INV}$) on RTN and INV to be *opposite* of the relative influence of IMkw (i.e., $\beta_{IMkw \rightarrow RTN} < \beta_{IMkw \rightarrow INV}$) and of IMst (i.e., $\beta_{IMst \rightarrow RTN} < \beta_{IMst \rightarrow INV}$) on them. Finally, the post-acceptance stage may have rendered IMap a less powerful predictor for post-acceptance behaviors in relation to other motivators. This points to the critical role of the IS implementation stage in understanding the effects of IS motivations in general, and intrinsic motivation toward accomplishment in specific, on IS usage behaviors.

5.2. Implications for Practice

Managers should recognize that employees can use implemented systems in the post-acceptance stage in diverse ways: (1) employees may use IS in a repetitive and standardized manner, or (2) employees may take initiatives to apply IS in a novel fashion and engage in innovative use. As these IS usage behaviors differ in the employees' orientation in how the implemented system is to be used to achieve work objectives, managers should pay attention to the quality of IS use above and beyond the quantity of IS use (e.g., time and frequency) (Boudreau and Seligman 2005, Hsieh and Wang 2007). They should recognize that in the post-acceptance stage, employees are more likely to engage in standardized IS usage behavior when they are extrinsically motivated and that they are more likely to explore innovative ways to use the system when they are intrinsically motivated. This requires managers to go beyond motivating employees by making the case that incorporating the use of implemented systems into work processes is useful to support their work.

Given the critical role of intrinsic motivation, managers should recognize that after systems have transitioned to the post-acceptance stage, there are three different types of intrinsic motivation toward IS use. Managers can cultivate employees' intrinsic motivation toward IS use by taking several actions. To stimulate employees' intrinsic motivation toward accomplishment, managers should make the needed resources available to assist employees when they encounter difficulties in using IS. Managers can also help employees set up meaningful performance objectives that could be accomplished through employees' effective IS use (Malone 1981). To enhance employees' intrinsic motivation to know, managers should foster a learning environment in which coworkers are ready to learn and share knowledge with each other to satisfy their curiosity. Constructive feedback from managers on employees' performance related to IS use can

also nurture employees' intrinsic motivation to know (Malone 1981). Finally, to increase employees' intrinsic motivation to experience stimulation, managers can focus on offering more entertaining user interfaces or fantasy training programs (Venkatesh 1999).

Managers may also tactically emphasize certain types of motivations among employees to achieve the desired usage behaviors. Specifically, our findings suggest that in the post-acceptance stage, routine use is primarily driven by utilitarian outcomes, and innovative use is mainly determined by the satisfaction of learning and pure hedonic fun when interacting with IS. Thus, when the situation requires employees to display routine use, managers can focus on enhancing employees' extrinsic motivation by emphasizing material outcomes that the employees can obtain by applying the implemented IS in a routine and standardized manner. Although there were no explicit reward policies to directly promote post-acceptance usage behaviors at the organizations where we conducted our three empirical studies, extrinsic rewards (e.g., monetary award) for IS use could be effective in nurturing standardized and repetitive behaviors, or routine use.

Moreover, the positive moderating effects of PIIT on the relationships between the three types of intrinsic motivations and innovative use also shed light for managers. Because PIIT is a rather stable individual characteristic (Agarwal and Prasad 1998), managers who want their employees to leverage advanced systems through innovative use to support their work should focus on employees' intrinsic motivations and should *also* identify, select, and recruit employees who are innovative with IT and are willing to take risks and engage in exploration.

5.3. Limitations and Future Research

Despite its contributions to theory and practice, our study has limitations and also opens opportunities for future research. To begin with, we validated the RIM measures in the contexts of business intelligence system and customer support system in two preliminary studies. Future research can examine the generalizability of these measures to other systems, e.g., enterprise resource planning (ERP). Next, although the correlation between IMap and IMkw is relatively high in our investigative context, it is comparable to results in other empirical contexts like education (Vallerand et al. 1993) and sports (Pelletier et al. 1995). Moreover, given the richness and comprehensiveness of the RIM concept, we recommend future studies appropriate and validate RIM to other IS-related contexts, especially where intrinsic motivation plays an important role, e.g., IS project development (Shah 2006) and knowledge management (Ko et al. 2005). Future studies can also identify

the antecedents, moderators, and consequences of RIM in these contexts (Vallerand and Fortier 1998, Vallerand 1997), as well as the possible boundary conditions (i.e., moderators) other than PIIT, e.g., organizational rank.

Our conclusions regarding the relative impacts of intrinsic motivation and extrinsic motivation (i.e., PU) on post-acceptance IS use are limited to one specific IS in a single telecom service organization. Although confounding effects were controlled by collecting data from a single site, including eight control variables, and performing common method bias tests, caution should still be exercised when generalizing the findings to other user, technological, organizational, industrial, and cultural contexts. For example, future research may investigate the validity of our research model across different user groups, e.g., digital natives and digital immigrants (Vodanovich et al. 2010). Also, the cultural differences between eastern and western countries could be another concern with regard to generalizing our results. As such, we encourage future studies to examine the proposed research model and hypotheses in different settings.

Although we limit focus on extrinsic motivation to utilitarian outcomes, specifically perceived usefulness, and although there were no rewards directly promoting routine use or innovative use in the organizations where we conducted our empirical studies, the influence of other forms of extrinsic motivation (e.g., cash, bonuses, promotions, praise from supervisors, and recognition) on IS usage behaviors are considerations for future studies. Scholars can also draw on the literature in social psychology to further conceptualize extrinsic motivation toward IS use. For example, Deci and Ryan (2002) suggest differentiating among four types of extrinsic motivations (i.e., external regulation, introjected regulation, integrated regulation, and identified regulation). Although our focus on perceived usefulness is similar to introjected regulation and external regulation (Vallerand and Fortier 1998), the influence of more constructive forms of extrinsic motivation like integrated and identified regulation, on IS usage behaviors should also be examined in future research. Future studies can also investigate how characteristics of reward mechanisms (e.g., monetary versus praise from supervisors versus recognition) moderate the relationships between user motivations and post-acceptance behaviors and whether certain types of rewards can increase or decrease the influence of specific intrinsic and extrinsic motivations.

Furthermore, we theorize that routine use and innovative use can coexist in the post-acceptance context, differ in their standardization or innovation orientation, and resemble the twin learning concepts of

exploitation and exploration, respectively, although we did not explicitly incorporate the learning elements at the measurement level. Future research could evaluate how routine use and innovative use can be described and measured more richly through further elaboration of learning orientation. Additionally, while we examine the two usage behaviors on a cross-sectional basis, future research can investigate the dynamics and synergies between routine use and innovative use over time. For example, researchers may employ a longitudinal research design to examine the process through which and the reasons why employees choose to routinize a certain type of innovative IS use but not to incorporate others as part of their normal work. Researchers may also investigate the organizational conditions in which routine use facilitates or hinders employees' further innovation.

Routine use and innovative use could, in theory, enhance individual and organizational performance. On the one hand, routine use, which signifies employees' use of IS in standardized ways, can facilitate the integration of IS and work processes (Saga and Zmud 1994). On the other hand, innovative use allows employees to capitalize on the value potential of the implemented IS by exploring ingenious ways to utilize IS (Jasperson et al. 2005, Kwon and Zmud 1987). To advance our theoretical understanding on the performance implications of post-acceptance usage behaviors, future research should investigate both the independent and joint impacts of routine use and innovative use on performance at the individual, process, and organizational levels. In addition, given that we theorize and measure employees' innovative use with the objective to support their work, we focus on its positive, rather than negative, consequences. The potential negative consequences of innovative use, if there are any, regarding cyber loafing, security, and privacy are beyond the scope of this study; whether the overall consequences of innovative use are positive or negative remain to be studied in future research.

Although we focus on routine use and innovative use, there could be other types of post-acceptance usage behaviors that deserve further attention. For example, adaptive use (Sun and Zhang 2008) is a higher-order construct consisting of four ways of applying IS features: trying new features, feature substitution, feature combination, and feature repurposing. These four adaptive use dimensions are interesting and worth investigation. Integrative use, another post-acceptance usage behavior, is defined as employees' application of IS to establish or enhance workflow linkages among a set of tasks (Saga and Zmud 1994). Nevertheless, some employees, such as frontline operators, usually do not have the authority

to modify workflow linkages between tasks. As such, we suggest that researchers carefully select contextual characteristics, including specific types of IS and user groups, to conceptualize the pertinent post-acceptance usage behaviors.

6. Conclusion

Our study theorizes two important post-acceptance usage behaviors: routine use and innovative use. Routine use and innovative use differ in their standardization or innovation orientation, and resemble the twin learning concepts of exploitation and exploration. Drawing on motivation theory, we appropriate the tri-dimensional rich intrinsic motivation concept to the IS use context and assess the relative impacts of three types of intrinsic motivations— intrinsic motivation toward accomplishment, intrinsic motivation to know, and intrinsic motivation to experience stimulation—and perceived usefulness (a key extrinsic motivator for IS use) on routine use and innovative use. We conducted three empirical studies with the two preliminary studies validating the measures for the three RIM constructs and the main study testing the research model and hypotheses. We found that for routine use, perceived usefulness had a stronger positive impact than the three types of intrinsic motivations; for innovative use, IMkw and IMst exerted a stronger positive influence than either IMap or perceived usefulness. Personal innovativeness with IT positively moderated the impact of each of the three RIM constructs on innovative use with low PIIT suppressing the positive effects of the RIM constructs. This study represents a significant advance in our theoretical understanding of post-acceptance usage behaviors, IS use motivations, the relationship between IS use motivations and post-acceptance behaviors, and the interaction effect between intrinsic motivation and personal innovativeness for innovative use. The results provide instrumental insights for managers to motivate employees to leverage implemented systems to extract their value potential more effectively.

Supplemental Material

Supplemental material to this paper is available at <http://dx.doi.org/10.1287/isre.1120.0456>.

Acknowledgments

The authors thank the senior editor, the associate editor, and the three reviewers for their constructive feedback through the review process. The authors appreciate the valuable suggestions from Bob Zmud, Robert J. Vallerand, Elena Karahanna, Kar Yan Tam, Cynthia Lee, and Lisa Lambert. This project is partially funded by the Hong Kong Research Grant Council [Grant No. PolyU 543310], and we are grateful for their financial support.

References

- Agarwal R (2000) Individual acceptance of information technologies. Zmud RW, ed. *Framing the Domains of IT Management: Projecting the Future...Through the Past* (Pinnaflex Educational Resources, Cincinnati), 85–104.
- Agarwal R and Karahanna E (2000) Time flies when you're having fun: Cognitive absorption and beliefs about information technology usage. *MIS Quart.* 24(4):665–694.
- Agarwal R, Prasad J (1998) A conceptual and operational definition of personal innovativeness in the domain of information technology. *Inform. Systems Res.* 9(2):204–215.
- Agarwal R, Prasad J (1999) Are individual differences germane to the acceptance of new information technologies. *Decision Sci* 30(2):361–391.
- Ahuja MK, Thatcher JB (2005) Moving beyond intentions and toward the theory of trying: Effects of work environment and gender on post-adoption information technology use. *MIS Quart.* 29(3):427–459.
- Aiken LS, West SG (1991) *Multiple Regression: Testing and Interpreting Interactions* (Sage, Newbury Park, CA).
- Amabile TM (1985) Motivation and creativity: Effects of motivational orientation on creative writers. *J. Personality Soc. Psych.* 48(2):393–399.
- Amabile TM (1988) A model of creativity and innovation in organizations. Staw BM, Cummings LL, eds. *Research in Organizational Behavior*, Vol. 10. (JAI Press, Greenwich, CT), 123–167.
- Amabile TM (1996) *Creativity in Context: Update to the Social Psychology of Creativity* (Westview, Boulder, CO).
- Amabile TM, Hennessey BA, Grossman BS (1986) Social influences on creativity: The effects of contracted-for-reward. *J. Personality Soc. Psych.* 50(1):14–23.
- Anand P, Sternthal B (1990) Ease of message processing as a moderator of repetition effects in advertising. *J. Marketing Res.* 27(3):345–353.
- Argote L (1999) *Organizational Learning: Creating, Retaining and Transferring Knowledge* (Kluwer, Norwell, MA).
- Atuahene-Gima K, Murray JY (2007) Exploratory and exploitative learning in new product development: A social capital perspective on new technology ventures in China. *J. Internat. Marketing* 15(2):1–29.
- Bandura A (1984) Self-efficacy mechanism in human agency. *Amer. Psychologist* 37(2):122–147.
- Bandura A (1997) *Self-Efficacy: The Exercise of Control* (Freeman, New York).
- Bass BM (1998) *Transformational Leadership: Industrial, Military, and Educational Impact* (Lawrence Erlbaum Associates, Mahwah, NJ).
- Belsley D, Kuh E, Welsch R (1980) *Regression Diagnostics: Identifying Influential Data and Sources of Collinearity* (John Wiley & Sons, New York).
- Benner MJ, Tushman ML (2002) Process management and technological innovation: A longitudinal study of the photography and paint industries. *Admin. Sci. Quart.* 47(4):676–706.
- Benner MJ, Tushman ML (2003) Exploitation, exploration, and process management: The productivity dilemma revisited. *Acad. Management J.* 28(2):238–256.
- Bentham J (1988) *An Introduction to the Principles of Morals and Legislation* (Prometheus Books, New York).
- Berlyne DE (1971) *Aesthetics and Psychology* (Appleton-Centry-Crofts, New York).
- Bhattacharjee A (2001) Understanding information systems continuance: An expectation-confirmation model. *MIS Quart.* 25(3):351–370.
- Blau PM (1964) *Exchange and Power in Social Life* (John Wiley & Sons, New York).

- Bollen KA, Stine RA (1992) Bootstrapping goodness-of-fit measures in structural equation models. *Sociol. Methods Res.* 21(2):205–229.
- Bommer M, Jalajas DS (1999) The threat of organizational downsizing on the innovative propensity of R&D professionals. *R & D Management* 29(1):27–34.
- Boudreau MC (2003) Learning to use ERP technology: A causal model. *Proc. 36th Hawaii Internat. Conf. System Sci.* <http://www.computer.org/csdl/proceedings/hicss/2003/1874/03/index.html>
- Boudreau MC, Seligman L (2005) Quality of use of a complex technology: A learning-based model. *J. Organ. End User Comput.* 17(4):1–22.
- Brislin RW, Lonner W, Thorndike RM (1973) *Cross-Culture Research Method* (John Wiley & Sons, New York).
- Brophy J (1987) Socializing students' motivation to learn. Maher ML, Kleiber DA, eds. *Advances in Motivation and Achievements*, Vol. 5. (JAI Press, Greenwich, CT), 181–210.
- Brown SA, Venkatesh V (2005) Model of adoption of technology in households: A baseline model test and extension incorporating household life cycle. *MIS Quart.* 29(3):399–426.
- Brown SA, Massey AP, Montoya-Weiss MM, Burkman JR (2002) Do I really have to? User acceptance of mandated technology. *Eur. J. Inform. Systems* 11(4):283–295.
- Chin W (1998a) Issues and opinion on structural equation modeling. *MIS Quart.* 22(1):vii–xvi.
- Chin W (1998b) The partial least squares approach to structural equation modeling. Marcoulides GA, ed. *Modern Methods for Business Research* (Lawrence Erlbaum Associates, Mahway, NJ), 295–336.
- Cohen WM, Levinthal DA (1990) Absorptive capacity: A new perspective on learning and innovation. *Admin. Sci. Quart.* 35(1):128–152.
- Cohen J, Cohen P, West SG, Aiken LS (2003) *Applied Multiple Regression/Correlation Analysis for the Behavioral Sciences* (Lawrence Erlbaum Associates, London).
- Compeau DR, Higgins CA (1995) Computer self-efficacy: Development of a measure and initial test. *MIS Quart.* 19(2):189–211.
- Cooper RB, Zmud RW (1990) Information technology implementation research: A technology diffusion approach. *Management Sci.* 36(2):123–139.
- Csikszentmihalyi M (1978) Intrinsic rewards and emergent motivation. Lepper MR, Greene D, eds. *The Hidden Costs of Reward* (Lawrence Erlbaum Associates, Hillsdale, NJ), 205–216.
- Davenport TH (2005) *Thinking for a Living: How to Get Better Performance and Results from Knowledge Workers* (Harvard Business School Press, Watertown, MA)
- Davenport TH, Harris JG, Morison R (2010) *Analytics at Work: Smarter Decisions, Better Results* (Harvard Business School Publishing Corporation, Boston).
- Davis FD (1989) Perceived usefulness, perceived ease of use, and user acceptance of information technology. *MIS Quart.* 13(3):319–340.
- Davis FD, Bagozzi RP, Warshaw PR (1989) User acceptance of computer technology: A comparison of two theoretical models. *Management Sci.* 35(8):982–1003.
- Davis FD, Bagozzi RP, Warshaw PR (1992) Extrinsic and intrinsic motivation to use computers in the workplace. *J. Appl. Soc. Psych.* 22(14):1111–1132.
- DeCharms R (1968) *Personal Causation: The Internal Affective Determinants of Behavior* (Academic Press, New York).
- Deci E, Ryan RM (2002) *Handbook of Self-Determination* (Research University of Rochester Press, Rochester, NY).
- DeLone WH, McLean ER (1992) Information systems success: The quest for the dependent variable. *Inform. Systems Res.* 3(1):60–95.
- Deng L, Poole MS (2010) Affect in Web interfaces: A study of the impacts of Web page visual complexity and order. *MIS Quart.* 34(4):711–730.
- Diamantopoulos A, Siguaw JA (2006) Formative versus reflective indicators in organizational measure development: A comparison and empirical illustration. *British J. Management* 17(4):263–282.
- Dukerich J, Golden B, Shortell S (2002) Beauty is in the eye of beholder: The impact of organizational identification, identity, and image on the cooperative behavior of physicians. *Admin. Sci. Quart.* 47(3):507–533.
- Durcikova A, Fadel KJ, Butler BS, Galletta DF (2011) Knowledge exploration and exploitation: The impact of psychological climate and knowledge management system access. *Inform. Systems Res.* 22(4):855–866.
- Dutton J, Penner W (1993) The importance of organizational identity for strategic agenda building. Hendry G, Newton J, eds. *Strategic Thinking: Leadership and the Management of Change* (John Wiley & Sons, West Sussex, England), 89–113.
- Eisenberger R (1992) Learned industriousness. *Psych. Rev.* 99(2):248–267.
- Eisenberger R, Cameron J (1996) Detrimental effects of reward: Reality or myth? *Amer. Psychologist* 51(11):1153–1166.
- Evans GW, Lepore SJ (1997) Moderating and mediating processes in environment-behavior research. Moore GT, Marans RW, eds. *Advances in Environment, Behavior, and Design*, Vol. 4. (Plenum Press, New York), 250–285.
- Fang X, Chan S, Brzezinski J, Xu S (2006) Moderating effects of task type on wireless technology acceptance. *J. Management Inform. Systems* 22(3):123–157.
- Fichman RG, Kemerer CF (1999) The illusory diffusion of innovation: An examination of assimilation gaps. *Inform. Systems Res.* 10(3):255–275.
- Fornell C, Larcker DF (1981) Evaluating structural equation models with observable variables and measurement error. *J. Marketing Res.* 18(1):39–50.
- Gallivan MJ, Spittler VK, Koufaris M (2005) Does information technology training really matter? A social information processing analysis of coworkers' influence on IT usage in the workplace. *J. Management Inform. Systems* 22(1):153–192.
- Gartner (2009) Gartner identifies the top 10 strategic technologies for 2010. Report, <http://www.gartner.com/it/page.jsp?id=1210613>.
- Gattiker TF, Goodhue DL (2005) What happens after ERP implementation: understanding the impact of inter-dependence and differentiation on plant-level outcomes. *MIS Quart.* 29(3):559–585.
- Gefen D, Straub D (2005) A practical guide to factorial validity using PLS-graph: Tutorial and annotated example. *Comm. Assoc. Inform. Systems* 16:91–109.
- Gefen D, Karahanna E, Straub D (2003) Trust and TAM in online shopping: An integrated mode. *MIS Quart.* 27(1):51–90.
- Gist ME, Mitchell TR (1992) Self-efficacy: A theoretical analysis of its determinants and malleability. *Acad. Management Rev.* 17(2):183–211.
- Goodhue DL, Thompson RL (1995) Task-technology fit and individual performance. *MIS Quart.* 19(3):213–236.
- Goodhue D, Lewis W, Thompson R (2007) Statistical power in analyzing interaction effects: Questioning the advantage of PLS with product indicators. *Inform. Systems Res.* 18(2):211–227.
- Greif S, Keller H (1990) Innovation and the design of work and learning environments: The concept of exploration in human-computer interaction. West MA, Farr JL, eds. *Innovation and Creativity at Work: Psychological and Organizational Strategies* (John Wiley & Sons, Chichester, UK), 231–249.

- Grewal R, Cote JA, Baumgartner H (2004) Multicollinearity and measurement error in structural equation models: Implications for theory testing. *Marketing Sci.* 23(4):519–529.
- Gupta AK, Smith KG, Shalley CE (2006) The interplay between exploration and exploitation. *Acad. Management J.* 49(4):693–706.
- Hair JF, Anderson RE, Tatham RL, Black WC (1998) *Multivariate Data Analysis* (Prentice-Hall, Upper Saddle River, NJ).
- Hartwick J, Barki H (1994) Explaining the role of user participation in information system use. *Management Sci.* 40(4):440–465.
- Hirschman EC (1980) Innovativeness, novelty seeking, and consumer creativity. *J. Consumer Res.* 7(3):283–295.
- Hong SJ, Thong JYL, Tam KY (2006) Understanding continued information technology usage behavior: A comparison of three models in the context of mobile internet. *Decision Support Systems* 42(3):1819–1834.
- Hsieh J, Wang W (2007) Explaining employees' extended use of complex information systems. *Eur. J. Inform. Systems* 16(3):216–227.
- Hsieh J, Zmud RW (2006) Understanding post-adoptive usage behaviors: A two-dimensional view. *DIGIT 2006 Proc. Paper 3*, <http://aisel.aisnet.org/digit2006/3>
- Hsieh J, Rai A, Keil M (2008) Understanding digital inequality: Comparing continued use behavioral models of the socio-economically advantaged and disadvantaged. *MIS Quart.* 32(1):97–126.
- Im G, Rai A (2008) Knowledge sharing ambidexterity in long-term interorganizational relationships. *Management Sci.* 54(7):1281–1296.
- Janssen O (2001) Fairness perceptions as a moderator in the curvilinear relationships between job demands, and job performance and job satisfaction. *Acad. Management J.* 44(5):1039–1050.
- Jaspersen J, Carter PE, Zmud RW (2005) A comprehensive conceptualization of post-adoptive behaviors associated with information technology enabled work systems. *MIS Quart.* 29(3):525–557.
- Johns G (2006) The essential impact of context on organizational behavior. *Acad. Management Rev.* 31(2):386–408.
- Kamis A, Koufaris M, Stern T (2008) Using an attribute-based decision support systems for user-customized products online: An experimental investigation. *MIS Quart.* 32(1):159–177.
- Karahanna E, Agarwal R (2011) When the spirit is willing: Symbolic adoption and technology exploration. Unpublished Manuscript, University of Georgia, Athens, GA.
- Katz D, Kahn RL (1966) *The Social Psychology of Organizations* (Wiley, New York).
- Kelman HC (1958) Compliance, identification and internalization: Three processes of attitude change. *J. Conflict Resolution* 2(1):51–60.
- Kim DH (1993) The link between individual and organizational learning. *Sloan Management Rev.* 35(1):37–50.
- Ko DG, Kirsch LJ, King WR (2005) Antecedents of knowledge transfer from consultants to clients in enterprise system implementations. *MIS Quart.* 29(1):59–85.
- Kolb DA (1984) *Experiential Learning: Experience as the Source of Learning and Development* (Prentice-Hall, Englewood Cliffs, NJ).
- Kowal J, Fortier MS (2000) Testing relationships from the hierarchical model of intrinsic and extrinsic motivation using flow as a motivational consequence. *Res. Quart. Exercise and Sport* 71(2):171–181.
- Kurtzberg TR, Amabile TM (2001) From Guilford to creative synergy: Opening the black box of team-level creativity. *Creativity Res. J.* 13(3):285–294.
- Kwon TH, Zmud RW (1987) Unifying the fragmented models of information systems implementation. Boland RJ, Hirschheim RA, eds. *Critical Issues in Information Systems Research* (John Wiley & Sons, New York), 227–251.
- Lee MKO, Cheung CMK, Chen Z (2005) Acceptance of Internet-based learning medium: The role of extrinsic and intrinsic motivation. *Inform. Management* 42(8):1095–1104.
- Legris P, Ingham J, Collette P (2003) Why do people use information technology? A critical review of the technology acceptance model. *Inform. Management* 40(3):191–204.
- Luthans F, Kreitner R (1985) *Organizational Behavior Modification and Beyond* (Scott, Foresman, Glenview, IL).
- MacKenzie SB, Podsakoff PM, Rich GA (2001) Transformational and transactional leadership and salesperson performance. *J. Acad. Marketing Sci.* 29(2):115–134.
- Malone TW (1981) Toward a theory of intrinsically motivating instruction. *Cognitive Sci.* 5(4):333–369.
- March JG (1991) Exploration and exploitation in organizational learning. *Organ. Sci.* 2(1):71–87.
- Maslow AH (1970) *Motivation and Personality* (Harper & Row, New York).
- McGraw KO (1978) The detrimental effects of reward on performance: A literature review and a prediction model. Lepper MR, Greene D, eds. *The Hidden Costs of Reward* (Erlbaum, Hillsdale, NJ), 255–294.
- McGraw KO, McCullers JC (1979) Evidence of a detrimental effect of extrinsic incentives on breaking a mental set. *J. Experiment. Soc. Psych.* 15(3):633–650.
- Meyers-Levy J, Peracchio LA (1995) Understanding the effects of color: How the correspondence between available and required resources affect attitudes. *J. Consumer Res.* 22(2):121–138.
- Morris MG, Venkatesh V (2010) Job characteristics and job satisfaction: Understanding the role of enterprise resource planning system implementation. *MIS Quart.* 34(1):143–161.
- Nambisan S, Agarwal R, Tanniru M (1999) Organizational mechanisms for enhancing user innovation in information technology. *MIS Quart.* 23(3):365–395.
- Negash S, Gray P (2008) Business intelligence. Frada B, Holsapple CW, eds. *Handbook on Decision Support Systems 2: Variations* (Springer, Berlin), 175–194.
- Nicholls JG (1984) Achievement motivation: Conceptions of ability, subjective experience, task choice, and performance. *Psych. Rev.* 91(3):328–346.
- Nunnally JC (1994) *Psychometric Theory* (McGraw-Hill, New York).
- Ouchi WG (1979) Conceptual framework for the design of organizational control mechanisms. *Management Sci.* 25(9):833–848.
- Pelletier LG, Fortier MS, Vallerand RJ, Tuson KM, Briere NM (1995) Toward a new measure of intrinsic motivation, extrinsic motivation, and amotivation in sports: The sport motivation scale (SMS). *J. Sport and Exercise Psych.* 17(1):35–53.
- Petter S, Straub D, Rai A (2007) Specifying formative constructs in information systems research. *MIS Quart.* 31(4):623–656.
- Piccolo RF, Colquitt JA (2006) Transformational leadership and job behaviors: The mediating role of core job characteristics. *Acad. Management J.* 49(2):327–340.
- Podsakoff PM, Organ DW (1986) Self-reports in organizational research: Problems and prospects. *J. Management* 12(4):531–544.
- Podsakoff PM, MacKenzie SB, Lee J-Y, Podsakoff NP (2003) Common method biases in behavioral research: A critical review of the literature and recommended remedies. *J. Appl. Psych.* 88(5):879–903.
- Rai A, Lang SS, Welker RB (2002) Assessing the validity of IS success models: An empirical test and theoretical analysis. *Inform. Systems Res.* 13(1):50–69.
- Ridgeway NM, Price LL (1994) Exploration in product usage: A model of use innovativeness. *Psych. Marketing* 11(1):69–85.

- Ringle CM, Wende S, Will A (2005) Smart PLS. Accessed November 20, 2010, <http://www.smartpls.de>. Hamburg, Germany.
- Robey D, Ross JW, Boudreau M (2002) Learning to implement enterprise systems: An exploratory study of the dialectics of change. *J. Management Inform. Systems* 19(1):17–46.
- Rogers EM (2003) *Diffusion of Innovation* (Free Press, New York).
- Ryan RM, Deci E (2000) Intrinsic and extrinsic motivations: Classic definitions and new directions. *Contemporary Educational Psych.* 25(1):54–67.
- Ryan RM, Mims V, Koestner R (1983) Relation of reward contingency and interpersonal context to intrinsic motivation: A review and test using cognitive evaluation theory. *J. Personality Soc. Psych.* 45(4):736–750.
- Saga VL, Zmud RW (1994) The nature and determinants of IT acceptance, routinization, and infusion. Levine L, ed. *Diffusion, Transfer and Implementation of Information Technology* (North-Holland, Amsterdam), 67–86.
- Schaefers KG, Epperson DL, Nauta MM (1997) Women's career development: Can theoretically derived variables predict persistence in engineering majors? *J. Counseling Psych.* 44(2):173–183.
- Schwarz A (2003) Defining information technology acceptance: A human-centered, management-oriented perspective. Unpublished Doctoral Dissertation, University of Houston, Houston, TX.
- Scott WE, Podsakoff PM (1982) Leadership, supervision and behavioral control: Perspectives from an experimental analysis. Frederickson L, ed. *Handbook of Organizational Behavior Management* (John Wiley & Sons, New York), 91–121.
- Seddon PB (1997) A respecification and extension of the DeLone and McLean model of IS success. *Inform. Systems Res.* 8(3): 240–253.
- Segars AH (1997) Assessing the unidimensionality of measurement: A paradigm and illustration within the context of information systems research. *Omega* 25(1):107–121.
- Shah SK (2006) Motivation, governance, and the viability of hybrid forms in open source software development. *Management Sci.* 52(7):1000–1014.
- Shin SJ, Zhou J (2003) Transformational leadership, conservation, and creativity: Evidence from Korea. *Acad. Management J.* 46(6):703–714.
- Silver MS (1991) Decisional guidance for computer-based decision support. *MIS Quart.* 15(1):105–122.
- Starbuck WH (1982) Congealing oil: Inventing ideologies to justify acting ideologies out. *J. Management Stud.* 19(1):4–27.
- Starbuck WH, Webster J (1991) When is play productive? *Accounting, Management, Inform. Tech.* 1(1):71–90.
- Steenkamp J-BEM, Burgess SM (2002) Optimum stimulation level and exploratory consumer behavior in an emerging consumer market. *Internat. J. Res. Marketing* 19(2):131–150.
- Sun H, Zhang P (2006) The role of moderating factors in user technology acceptance. *Internat. J. Human-Comput. Stud.* 64(2): 53–78.
- Sun H, Zhang P (2008) Adaptive system use: An investigation at the system feature level. *Proc. 29th Internat. Conf. Inform. Systems, Paris, France*, <http://aisel.aisnet.org/icis2008/170>.
- Sundaram S, Schwarz A, Jones E, Chin W (2007) Technology use on the front line: How information technology enhances individual performance. *J. Acad. Marketing Sci.* 35(1):101–112.
- Tanriverdi H (2006) Performance effects of information technology synergies in multibusiness firms. *MIS Quart.* 30(1):57–77.
- Teece DJ, Pisano G, Shuen A (1997) Dynamic capabilities and strategic management. *Strategic Management J.* 18(7):509–533.
- Thatcher JB, Perrew PL (2002) An empirical examination of individual traits as antecedents to computer anxiety and computer self-efficacy. *MIS Quart.* 26(4):381–396.
- Thomas KW, Velthouse BA (1990) Cognitive elements of empowerment: An “interpretive” model of intrinsic task motivation. *Acad. Management Rev.* 15(4):666–681.
- Thompson RL, Higgins CA, Howell JM (1994) Influence of experience on personal computer utilization: Testing a conceptual model. *J. Management Inform. Systems* 11(1):167–187.
- Thong JYL (1999) An integrated model of information systems adoption in small businesses. *J. Management Inform. Systems* 15(4):187–214.
- Thong JYL, Hong SJ, Tam KY (2006) The effects of post-adoption beliefs on the expectation-confirmation model for information technology continuance. *Internat. J. Human-Comput. Stud.* 64(9):799–810.
- Vallerand RJ (1997) Toward a hierarchical model of intrinsic and extrinsic motivation. Zanna MP, ed. *Advances in Experimental Social Psychology* (Academic Press, New York), 271–360.
- Vallerand RJ, Briere NM (1990) Validation of the French form of the sports motivation scale. Final report presented to the Canadian Fitness and Lifestyle Research Institute, Research Laboratory on Social Behavior, Université du Québec a Montréal. Montréal.
- Vallerand RJ, Fortier MS (1998) Measures of intrinsic and extrinsic motivation in sport and physical activity: A review and critique. Duda JL, ed. *Advances in Sport and Exercise Psychology Measurement* (Fitness Information Technology, Inc, Morgantown, WV), 81–101.
- Vallerand RJ, Fortier MS, Guay F (1997) Self-determination and persistence in a real-life setting: Toward a motivational model of high school dropout. *J. Personality Soc. Psych.* 72(5):1161–1176.
- Vallerand RJ, Blais MR, Briere NM, Pelletier LG (1989) Construction and validation of the academic motivation scale. *Canadian J. Behav. Sci.* 21(3):323–349.
- Vallerand RJ, Pelletier LG, Blais MR, Briere NM, Senecal C, Vallieres EF (1992) The academic motivation scale: A measure of intrinsic, extrinsic, and amotivation in education. *Ed. Psych. Measurement* 52(4):1003–1009.
- Vallerand RJ, Pelletier LG, Blais MR, Briere NM, Senecal C, Vallieres EF (1993) On the assessment of intrinsic, extrinsic, and amotivation in education: Evidence on the concurrent and construct validity of the academic motivation scale. *Ed. Psych. Measurement* 53(1):159–172.
- Van der Heijden H (2004) User acceptance of hedonic information systems. *MIS Quart.* 28(4):695–704.
- Van Yperen NW, Hagedoorn M (2003) Do high job demands increase intrinsic motivation or fatigue or both? The role of job control and job social support. *Acad. Management J.* 46(3):339–348.
- Venkatesh V (1999) Creating favorable user perceptions: Exploring the role of intrinsic motivation. *MIS Quart.* 23(2):239–260.
- Venkatesh V, Bala H (2008) Technology acceptance model 3 and a research agenda on interventions. *Decision Sci.* 39(2):273–315.
- Venkatesh V, Speier C (1999) Computer technology training in the work-place: A longitudinal investigation of the effect of mood. *Organ. Behav. Human Decision Processes* 79(1):1–28.
- Venkatesh V, Morris MG, Davis GB, Davis FD (2003) User acceptance of information technology: Toward a unified view. *MIS Quart.* 27(3):425–478.
- Vodanovich S, Sundaram D, Myers M (2010) Digital natives and ubiquitous information systems. *Inform. Systems Res.* 21(4):711–723.
- Wang W, Hsieh J (2006) Beyond routine: Symbolic adoption, extended use, and emergent use of complex information systems in the mandatory organizational context. *ICIS 2006 Proc. Paper 48*, <http://aisel.aisnet.org/icis2006/48>.
- Wasko MM, Faraj S (2005) Why should I share? Examining social capital and knowledge contribution in electronic networks of practice. *MIS Quart.* 29(1):35–57.

- Webster J, Martocchio JJ (1992) Microcomputer playfulness: Development of a measure with workplace implications. *MIS Quart.* 16(2):201–226.
- Webster J, Trevino LK, Ryan L (1993) The dimensionality and correlates of flow in human-computer interactions. *Comput. Human Behav.* 9(4):411–426.
- Wegner E, McDermott R, Snyder W (2002) *Cultivating Communities of Practice. A Guide to Managing Knowledge* (Harvard University Press, Cambridge, MA).
- Weick KE, Sutcliffe KM, Obstfeld D (2005) Organizing and the process of sensemaking. *Organ. Sci.* 16(4):409–421.
- White RW (1959) Motivation reconsidered: The concept of competence. *Psych. Rev.* 66(2):297–333.
- Wohlwill J, Heft H (1987) The physical environment and the development of the child. Stokols D, Altman I, eds. *Handbook of Environmental Psychology* (John Wiley & Sons, New York), 281–328.
- Zuckerman M (1979) *Sensation-Seeking: Beyond the Optimal Level of Arousal* (Lawrence Erlbaum Associates, Hillsdale, NJ).