



Aalborg Universitet

AALBORG UNIVERSITY
DENMARK

Abnormal IGF-Binding Protein Profile in the Bone Marrow of Multiple Myeloma Patients

Bieghe, Liesbeth; Brohus, Malene; Kristensen, Ida B; Abildgaard, Niels; Bøgsted, Martin; Johnsen, Hans E; Conover, Cheryl A; De Bruyne, Elke; Vanderkerken, Karin; Overgaard, Michael T; Nyegaard, Mette

Published in:
PLOS ONE

DOI (link to publication from Publisher):
[10.1371/journal.pone.0154256](https://doi.org/10.1371/journal.pone.0154256)

Creative Commons License
CC BY 4.0

Publication date:
2016

Document Version
Publisher's PDF, also known as Version of record

[Link to publication from Aalborg University](#)

Citation for published version (APA):

Bieghe, L., Brohus, M., Kristensen, I. B., Abildgaard, N., Bøgsted, M., Johnsen, H. E., Conover, C. A., De Bruyne, E., Vanderkerken, K., Overgaard, M. T., & Nyegaard, M. (2016). Abnormal IGF-Binding Protein Profile in the Bone Marrow of Multiple Myeloma Patients. *PLOS ONE*, 11(4), [e0154256].
<https://doi.org/10.1371/journal.pone.0154256>

General rights

Copyright and moral rights for the publications made accessible in the public portal are retained by the authors and/or other copyright owners and it is a condition of accessing publications that users recognise and abide by the legal requirements associated with these rights.

- ? Users may download and print one copy of any publication from the public portal for the purpose of private study or research.
- ? You may not further distribute the material or use it for any profit-making activity or commercial gain
- ? You may freely distribute the URL identifying the publication in the public portal ?

Take down policy

If you believe that this document breaches copyright please contact us at vbn@aub.aau.dk providing details, and we will remove access to the work immediately and investigate your claim.

RESEARCH ARTICLE

Abnormal IGF-Binding Protein Profile in the Bone Marrow of Multiple Myeloma Patients

Liesbeth Bieghs^{1,2,3‡}, Malene Brohus⁴, Ida B. Kristensen⁵, Niels Abildgaard⁵, Martin Bøgsted¹, Hans E. Johnsen¹, Cheryl A. Conover⁶, Elke De Bruyne², Karin Vanderkerken², Michael T. Overgaard^{4☯‡*}, Mette Nyegaard^{3☯}

1 Department of Hematology, Aalborg Hospital, Aalborg University, Aalborg, Denmark, **2** Department of Hematology and Immunology-Myeloma Center Brussel, Vrije Universiteit Brussel, Brussels, Belgium, **3** Department of Biomedicine, Aarhus University, Aarhus, Denmark, **4** Department of Chemistry and Bioscience, Aalborg University, Aalborg, Denmark, **5** Department of Haematology, Odense University Hospital, Odense, Denmark, **6** Division of Endocrinology, Metabolism and Nutrition, Endocrine Research Unit, Mayo Clinic, Rochester, MN, United States of America

☯ These authors contributed equally to this work.

‡ Co-senior author

* mto@bio.aau.dk



Abstract

Insulin-like growth factor (IGF) signalling plays a key role in homing, progression, and treatment resistance in multiple myeloma (MM). In the extracellular environment, the majority of IGF molecules are bound to one of six IGF-binding proteins (IGFBP1-6), leaving a minor fraction of total IGF free and accessible for receptor activation. In MM, high IGF-receptor type 1 expression levels correlate with a poor prognosis, but the status and role of IGF and IGFBPs in the pathobiology of MM is unknown. Here we measured total IGF1, IGF2, and intact IGFBP levels in blood and bone marrow samples from MM (n = 17), monoclonal gammopathy of undetermined significance (MGUS) (n = 37), and control individuals (n = 15), using ELISA (IGFs) and ¹²⁵I-IGF1 Western Ligand Blotting (IGFBPs). MGUS and MM patients displayed a significant increase in intact IGFBP-2 (2.5–3.8 fold) and decrease in intact IGFBP-3 (0.6–0.5 fold) in the circulation compared to control individuals. Further, IGFBP-2 as well as total IGFBP levels were significantly lower in bone marrow compared to circulation in MM and MGUS only, whereas IGF1, IGF2, and IGFBP-3 were equally distributed between the two compartments. In conclusion, the profound change in IGFBP profile strongly suggests an increased IGF bioavailability in the bone marrow microenvironment in MGUS and MM, despite no change in growth factor concentration.

OPEN ACCESS

Citation: Bieghs L, Brohus M, Kristensen IB, Abildgaard N, Bøgsted M, Johnsen HE, et al. (2016) Abnormal IGF-Binding Protein Profile in the Bone Marrow of Multiple Myeloma Patients. PLoS ONE 11(4): e0154256. doi:10.1371/journal.pone.0154256

Editor: Claire M. Edwards, University of Oxford, UNITED KINGDOM

Received: December 7, 2015

Accepted: April 11, 2016

Published: April 25, 2016

Copyright: © 2016 Bieghs et al. This is an open access article distributed under the terms of the [Creative Commons Attribution License](https://creativecommons.org/licenses/by/4.0/), which permits unrestricted use, distribution, and reproduction in any medium, provided the original author and source are credited.

Data Availability Statement: All relevant data are within the paper and its Supporting Information files.

Funding: The authors received no specific funding for this work.

Competing Interests: The authors have declared that no competing interests exist.

Introduction

Multiple myeloma (MM) is an incurable plasma cell malignancy, characterized by the massive accumulation of terminally differentiated monoclonal plasma cells in the bone marrow (BM). MM cells are (in most cases) highly dependent on the BM microenvironment where growth and survival factors are secreted. During the last decade, the insulin-like growth factor (IGF) system has been demonstrated to play a prominent role within MM pathogenesis [1,2]. IGF1 has been shown to promote the growth, survival and migration of MM cells. High

serum IGF1 levels and high IGF receptor type-1 (IGF-1R) expression have been linked to poor prognosis in MM patients, and osteoclasts have been reported to be a source of local IGF1 in MM [3–7]. Therapies targeting the IGF-1R have, however, failed to be translated into the clinic, most likely because of unspecific patient selection and lack of adequate biomarkers [8,9]. Recently, renewed interest in the IGF system has been generated by studies showing that IGF-1R inhibitors appear to be effective in overcoming drug resistance to known anti-myeloma agents, both *in vitro* and *in vivo* [10,11]. The IGF system consists of IGF1, IGF2, IGF-1R and six insulin-like growth factor binding proteins [IGFBP1–6]. Within the circulation, the majority of the IGF molecules are bound to IGFBPs leaving just a minor fraction free and bioavailable. Only free IGF binds to its receptor and initiates a signaling cascade resulting in proliferation and survival of cells. Therefore, the IGFBPs are major regulators of the IGF activity [12]. Until now, the level of IGFBPs in MM and the asymptomatic pre-malignant plasma cell disorder monoclonal gammopathy of undetermined significance (MGUS) [13], has been poorly described. Gene expression levels of the so-called IGFBP7 gene, also known as MAC25, Prostacyclin-Stimulating Factor, Tumor-Derived Adhesion Factor, or PGI2-Stimulating Factor, have recently been linked to poor prognosis [14]. IGFBP7 is not, however, a high affinity IGF binding protein and is not generally considered part of the extracellular IGF system [15].

The aim of this study was to systematically profile the extracellular components of the IGF system. This is the first investigation of the extracellular IGF components in paired samples of plasma from peripheral blood (PB) and BM in MM, MGUS and control individuals.

Materials and Methods

The patients were diagnosed and peripheral blood (PB) and bone marrow (BM) plasma samples from patients and control individuals were collected at the Odense Hospital as previously described [16]. All MM patients were untreated newly diagnosed individuals. Patient characteristics are summarized in Table 1. All study subjects provided informed written consent. The study was approved by the Regional Medical Ethics Committee of the Odense University Hospital (protocol number S-20090093) and conducted according to the Helsinki declaration. Clinical characteristics are described by Kristensen et al. [16]. The gender distribution was comparable between the different groups.

Total IGF1 and IGF2 levels were measured by ELISA, according to the manufacturer's instructions (using the E20 & E30 kit, respectively, Mediagnost, Germany). Western Ligand Blotting (WLB) for determination of intact IGFBP levels was performed with ¹²⁵I-IGF1 as previously described [17]. Briefly, protein from 1 µl blood or BM plasma samples were separated by sodium dodecyl sulfate-polyacrylamide gel electrophoresis (SDS-PAGE) using a 7.5–15% linear gradient under non-reducing conditions, and blotted onto a nitrocellulose membrane for 1.5 hours at 17 V. The membrane was incubated in 3% nonidet P-40/ tris-buffered saline (TBS) for 20–30 minutes, blocked (0.5% bovine serum albumin (BSA) in TBS) for 2 hours and labeled with ¹²⁵I-IGF1 (R&D Systems Inc., Minneapolis, USA) overnight at 4°C. The membrane was exposed to a BioMax MR film (Kodak, Rochester, USA) for 1–2 weeks at -80°C by using a Dupont enhancing screen. IGFBP levels were quantified by densitometry using the TotalLab Quant software (Isogen Life Sciences, The Netherlands). Each blot used for quantification included paired samples (PB and BM plasma) from at least two control individuals, and both MGUS and MM individuals. Western immunoblotting was performed as previously described [18], using a monoclonal mouse anti-IGFBP-2 antibody from Ansh Labs (TX, USA) as primary antibody and horseradish peroxidase-conjugated secondary goat anti-mouse antibody (the Jackson Laboratory). The blot was developed using enhanced chemiluminescence

Table 1. Patient characteristics.

	Number	Mean	Range
Control individuals (n = 15)			
Age (years)		63	50–76
Gender (M/F)	5/10		
Monoclonal gammopathy of undetermined significance (n = 37)			
Age (years)		73	46–88
Gender (M/F)	17/20		
Multiple myeloma (n = 17)			
Age (years)		72	52–86
Gender (M/F)	11/6		
M-component type			
IgG	11		
IgA	2		
Light chain type			
kappa	3		
lambda	0		
NA	1		
ISS Stage¹			
Stage I	6		
Stage II	2		
Stage III	6		
NA	3		
Adverse cytogenetics			
13q	5		
t(4,14)	1		
17p	1		
Plasma cells in BM (%)		38,8	3–78

¹ISS: International staging system, NA: not available

doi:10.1371/journal.pone.0154256.t001

(Amersham Biosciences, NJ, USA). Graphical and statistical analyses for IGF1 and IGF2 levels were done using GraphPad Prism 5.0 software.

For analysis of the IGFBP levels, we assume that the level for each protein (IGFBP-2, IGFBP-3, and total IGFBP (sum of IGFBP-2 and IGFBP-3 band intensities)), can be modelled as

$$Protein_{ijk} = e^{(\alpha_{ij} + B_k + A_{k|l} + \epsilon_{ijk})}$$

where α_{ij} represents the log-scale protein level for tissue $i \in \{BM, PB\}$ and disease $j \in \{CON, MGUS, MM\}$ and B_k denotes variation for k 'th WLB ($k \in \{1, \dots, 11\}$), $A_{k|l}$ denotes individual person variation nested within each WLB for $l \in \{1, \dots, n_k\}$, and ϵ_{ijk} is the measurement errors. We assume the three variation terms are normal distributed with mean 0 and variance σ^2_{WLB} , σ^2_P , and σ^2 , respectively.

This means $\log Protein_{ijk}$ is a linear mixed model (LME). All statistical analyses of the model were performed with R version 3.2.0 (R Core Team. R: A language and environment for statistical computing, 2015. URL <http://www.R-project.org/>). In detail, the LME was estimated by the lme-function, from the R-package nlme. The model assumptions were controlled by quantile-quantile plots of the residuals. Standard deviations, confidence intervals, and P-values

for contrasts on log-scale, e.g. MGUS versus CON for PB,

$$\log Protein_{PB, MGUS} - \log Protein_{PB, CON} = \alpha_{PB, MGUS} - \alpha_{PB, CON}$$

were calculated by the `glht`-function in the R-package `multcomp`. Ratio between protein contrasts and their confidence intervals, e.g. MGUS versus CON for PB,

$$\frac{\log Protein_{PB, MGUS}}{\log Protein_{PB, CON}} = e^{(\alpha_{PB, MGUS} - \alpha_{PB, CON})}$$

were calculated by the exponential function on appropriate contrasts and their standard deviation were calculated by the statistical delta-method. Confidence interval (CI) is given as the 95% CI. Non-parametric Spearman correlation analysis were performed using GraphPad Prism 5.0 software.

Results

First, total IGF1 and IGF2 levels were determined in the circulation and in the BM. Within the circulation, we found no significant difference in total IGF1 levels between MM patients (117.7 ng/ml; CI 104.9–130.5) ($n = 17$) and control individuals (137.2 ng/ml; CI 123.8–150.6) ($n = 15$) (Fig 1A). The levels of total IGF1 in the BM were also comparable between MM patients (117.4 ng/ml; CI 102.9–132.9) and controls (135.0 ng/ml; CI 122.1–147.9) (Fig 1B). A small decrease in IGF1 level was observed in MGUS ($n = 37$) compared to controls, both for circulation (107.5 ng/ml; CI 96.1–119.0) and BM (103.2 ng/ml; CI 91.5–114.9) ($p < 0.01$). For total IGF2, no difference was observed between MM, MGUS or control individuals, neither in the circulation, nor in the BM (Fig 1E and 1F). Moreover, we found that the average level of total IGF2 was four times higher than total IGF1. This is in accordance with previous findings [19]. The levels of total IGFs between the circulation and the BM were strongly correlated, independent of disease state (IGF1: $r = 0.88$, $p < 0.0001$; IGF2: $r = 0.90$, $p < 0.0001$) (Fig 1C and 1G). Further, IGF1 and IGF2 concentrations did not differ between the two compartments, suggesting that the total level of IGFs in the circulation can be used as a proxy for the levels in the BM (Fig 1D and 1H).

Next, we determined the presence and levels of intact IGFBPs, using ^{125}I -IGF-1 western ligand blotting (WLB) on the same sample set. Fig 2A shows excerpts from two representative WLBs. We only observed 3 detectable IGFBPs bands, independent of disease state or compartment. The two high molecular weight IGFBP bands (MW 38 and 42 kDa) have previously been identified as different glycosylation forms of IGFBP-3 [20,21]. Western immunoblotting confirmed that the 32 kDa band was IGFBP-2 (Fig 2B). When analyzing the results from all WLBs, a different IGFBP profile was observed between control and disease states. In the circulation, a profound increase in the level of IGFBP-2 was observed in MGUS (2.5 fold; $p < 0.001$) and MM (3.8 fold; $p < 0.001$) compared to control samples (Fig 2C). In contrast, a decrease in IGFBP-3 levels was observed both for MGUS (down to 0.6 fold; $p < 0.05$) and MM (down to 0.5 fold; $p < 0.01$) compared to controls. Within the BM, the IGFBP-2 levels were significantly higher in MM patients only (2.1 fold; $p < 0.01$) (Fig 2D), and IGFBP-3 levels were significantly lower in MM compared to control individuals (down to 0.5 fold; $p < 0.01$). Total IGFBP levels did not show a statistically significant difference between control and MGUS or MM, neither in the circulation nor in the BM, although the total IGFBP levels in the BM tended to be lower (down to 0.8 fold for both MGUS and MM). The distribution of IGFBPs between the circulation and the BM compartment seemed to be fully equal in control individuals. However, we found that the ratio of IGFBP-2 between the BM and circulation was found significantly lower for MGUS and MM patients (down to 0.5 fold; $p < 0.001$, for both), whereas no difference in the IGFBP-3

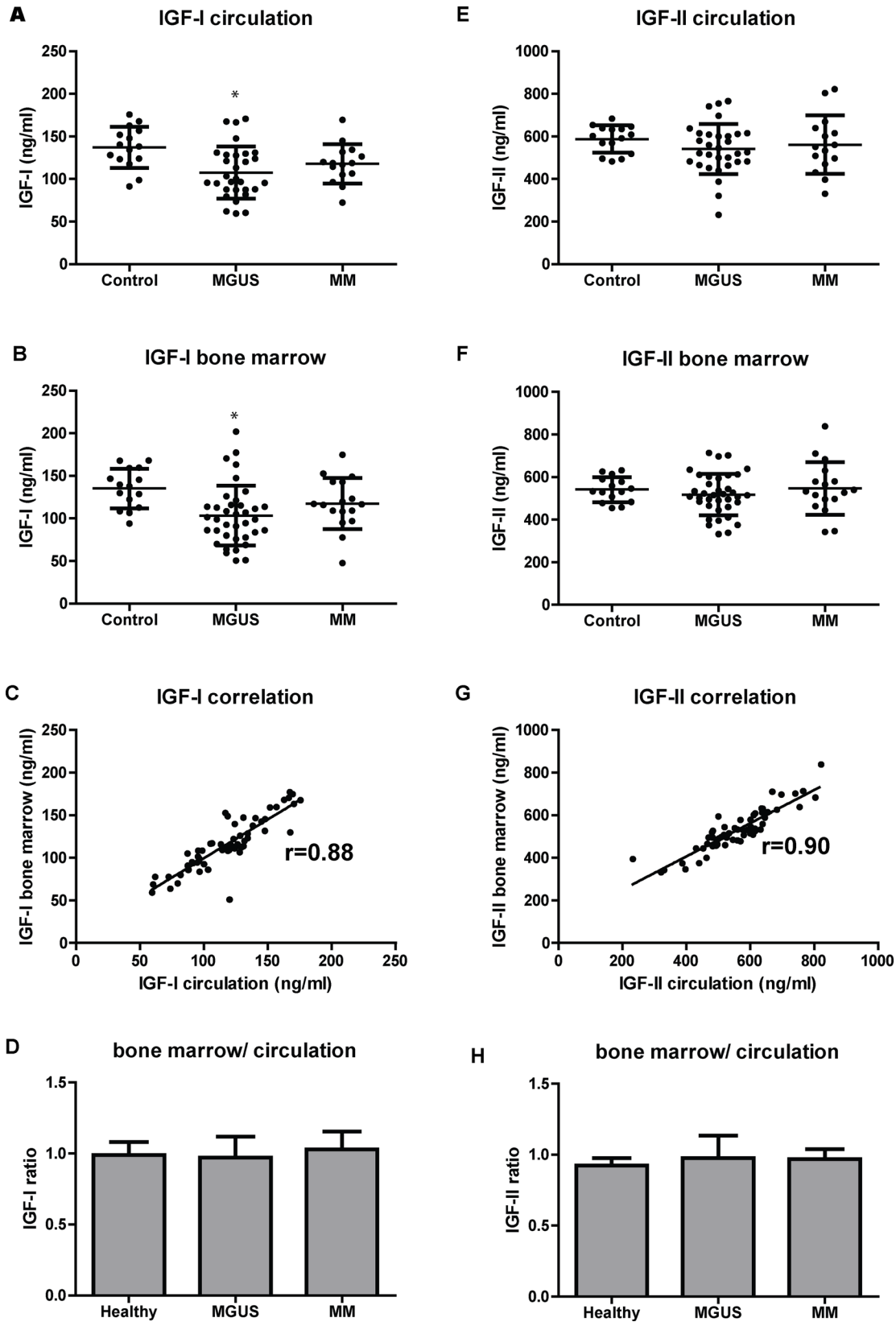


Fig 1. Total IGF1 and IGF2 levels in controls and patients with MGUS or MM. Levels of IGF1 measured by ELISA (A, B) and IGF2 (E, F) in plasma from circulation (A, E) and bone marrow (B, F). Correlation analysis of IGF1 (C) and IGF2 (G) between bone marrow and circulation. Mean pairwise ratio of bone marrow to circulating (for each individual) IGF1 (D) and IGF2 (H). Dots represent individual patients. Bars indicate standard deviations. (r) Pearson's correlation coefficient. * $p < 0.01$ compared to control.

doi:10.1371/journal.pone.0154256.g001

distribution was observed (Fig 2E). In addition, total IGFBP levels were significantly lower in the BM compartment for both MGUS (down to 0.7 fold; $p < 0.01$) and MM (down to 0.8 fold; $p < 0.05$) patients compared to the circulation. This strongly indicates that there is an increased IGF bioavailability in the BM microenvironment associated with the onset and progression of MM. In general, there was no significant correlation between plasma cell infiltration and the level of IGFBPs, except for the levels of circulating intact IGFBP-2, correlating positively with increased percentage of plasma cells ($r = 0.38$, $p = 0.04$) (S1 Fig).

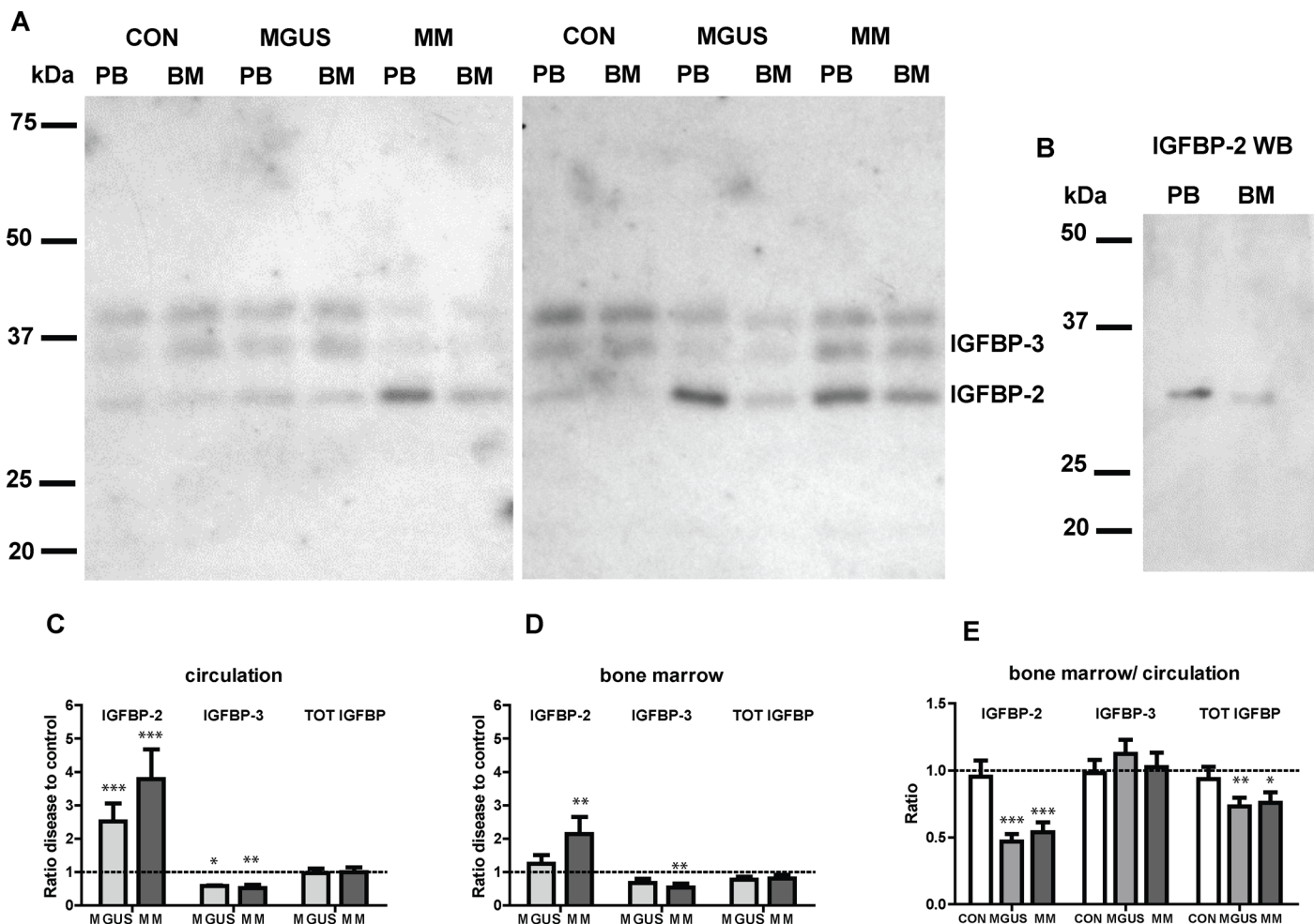


Fig 2. IGFBP levels and distribution in controls, MGUS and MM. A) Autoradiograph of two representative ¹²⁵I-IGF Western ligand blots displaying plasma samples from the circulation (PB) and bone marrow (BM) taken from MGUS and MM patients and control (CON) individuals. The two top bands appearing at 38 and 42 kDa represent IGFBP-3. B) Western immunoblot analysis using a monoclonal IGFBP-2 primary antibody, confirming the identity of the 32-kDa band as IGFBP-2. C) The IGFBP disease to control ratio in the circulation. D) The IGFBP disease to control ratio in the bone marrow. E) Tissue distribution of the IGFBPs shown as the circulation to bone marrow ratio. * $p < 0.05$, ** $p < 0.01$, *** $p < 0.001$

doi:10.1371/journal.pone.0154256.g002

Discussion

We are the first to describe the extracellular IGF system in the BM microenvironment in MGUS and MM patients. In this study, we demonstrate that in both MGUS and MM patients there is a large increase in circulating levels of intact IGFBP-2 concomitant with a marked decrease in IGFBP-3 levels. Interestingly, the increase in intact circulating IGFBP-2 correlated positively with the degree of plasma cell infiltration, suggesting that IGFBP-2 may be a novel marker for disease progression. Taken together with no to moderate changes in total IGF levels, there is a profound redistribution of IGFs from the major IGF carrier IGFBP-3 to IGFBP-2 in MGUS and MM. These changes are however, not reflected in the BM compartment, where the level of IGFBP-2 is significantly lower than in the circulation in both MGUS and MM, resulting in a lower total intact IGFBP level compared to the circulation (summarized in Fig 3). Within other types of cancer (e.g. prostate and breast cancer), the roles of IGFBP-3 and IGFBP-2 have been more thoroughly described, and demonstrated to convey both inhibitory and stimulating effects on tumor progression, depending on the tissue and type of cancer [12]. So far, nothing is known of their exact biological significance in MM. In non-MM bone, however, the IGFBPs are well established as key players for normal osteoblast and osteoclast function and bone turnover [22]. Bone formation is impaired in MM patients, and the abnormal IGFBP profile demonstrated here in the local BM microenvironment, could play a role in deregulation of bone remodeling in MM patients, since IGFBP-2 is known to be involved in bone formation and density determination [23]. We propose that the observed reduction in intact IGFBP-2 levels in the BM compared to the circulation, may be partially explained by localized IGFBP-2

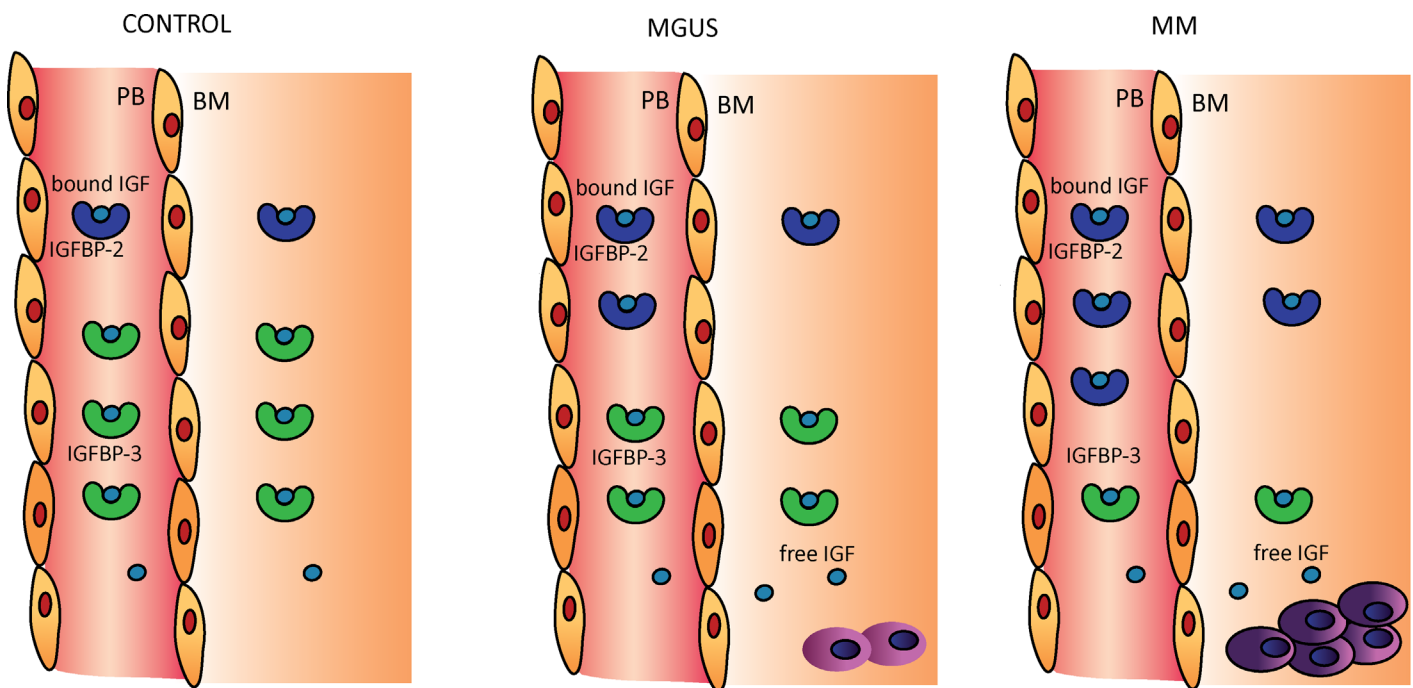


Fig 3. Schematic overview of IGF and IGFBP levels in controls, MGUS and MM patients. In Peripheral blood (PB): The level of IGFBP-2 significantly increases in MGUS and MM patients compared to controls, while IGFBP-3 decreases. The total IGFBP level is similar between MGUS, MM patients and control samples. In Bone marrow (BM): IGFBP-2 is significantly increased in MM patients and IGFBP-3 is decreased in MGUS and MM patients. Total IGFBPs are lower in MGUS and MM patients. Tissue distribution: Total IGF1 and -2, IGFBP-2, IGFBP-3, and total IGFBP are distributed equally between the PB and BM in control individuals. In MGUS and MM patients, there are lower levels of IGFBP-2 and total IGFBP in the BM compared to PB. IGF1 and -2, and IGFBP-3 are equally distributed between compartments.

doi:10.1371/journal.pone.0154256.g003

proteolysis. Indeed metalloproteinases, such as pregnancy-associated plasma protein-A, have been demonstrated to be involved in this process [24]. In previous MM studies, increased expression of metalloproteinase genes were associated with poor prognosis [25]. Further research is needed to examine the possible link between metalloproteinases and our findings. Another possible explanation for the lower level of IGFBP-2 in the BM plasma, may be adhesion of the IGFBP-2 complex to the glycosaminoglycan-rich extracellular matrix [26]. Overall, the abnormal IGFBP profile identified in MGUS and MM suggest that the levels of bioavailable IGF is increased, in particular in the BM microenvironment in MM patients, despite unchanged or slightly lower total IGF concentrations (Fig 3). We propose that these perturbations in the extracellular IGF-system may be an important contributor to MM disease progression and treatment resistance. Further, our study suggests that targeting IGF signaling through modulation of the IGF binding protein profile, eg. using modified non-activatable IGFBPs, could represent a novel addition to therapeutic strategies for treating MM, as has been demonstrated for other cancer forms [27,28].

Supporting Information

S1 Fig. Correlation analysis of IGFBP levels and plasma cell infiltration. The degree of plasma cell infiltration was plotted against the level of IGFBP-2 (A, D), IGFBP-3 (B, E) and total IGFBP (C, F) in plasma from the circulation (A, B, C) and bone marrow (D, E, F). Non-parametric correlation analysis only identified a significant correlation for circulating IGFBP-2 levels and plasma cell infiltration ($p < 0.05$). Dots represent individual patients. (r) Spearman's correlation coefficient.
(PDF)

Acknowledgments

We would like to thank Laurie Bale for the excellent technical assistance.

Author Contributions

Conceived and designed the experiments: LB MTO MN. Performed the experiments: LB. Analyzed the data: LB MBr MBø MTO MN CAC. Contributed reagents/materials/analysis tools: IBK NA. Wrote the paper: LB MTO MN. Critically reviewed the manuscript: LB MBr IBK NA MBø HEJ EDB KV MTO MN CAC.

References

1. Sprynski AC, Hose D, Caillot L, Réme T, Shaughnessy JD, Barlogie B, et al. The role of IGF-1 as a major growth factor for myeloma cell lines and the prognostic relevance of the expression of its receptor. *Blood* [Internet]. 2009 May 7 [cited 2014 May 31]; 113(19):4614–26. Available from: <http://www.pubmedcentral.nih.gov/articlerender.fcgi?artid=2691749&tool=pmcentrez&rendertype=abstract> doi: 10.1182/blood-2008-07-170464 PMID: 19228610
2. Barretina J, Caponigro G, Stransky N, Venkatesan K, Margolin AA, Kim S, et al. The Cancer Cell Line Encyclopedia enables predictive modelling of anticancer drug sensitivity. *Nature* [Internet]. 2012 Mar 29 [cited 2014 May 23]; 483(7391):603–7. Available from: <http://www.pubmedcentral.nih.gov/articlerender.fcgi?artid=3320027&tool=pmcentrez&rendertype=abstract> doi: 10.1038/nature11003 PMID: 22460905
3. Bataille R, Robillard N, Avet-Loiseau H, Harousseau J-L, Moreau P. CD221 (IGF-1R) is aberrantly expressed in multiple myeloma, in relation to disease severity. *Haematologica* [Internet]. 2005 May [cited 2014 May 31]; 90(5):706–7. Available from: <http://www.ncbi.nlm.nih.gov/pubmed/15921396> PMID: 15921396
4. Chng WJ, Gualberto a, Fonseca R. IGF-1R is overexpressed in poor-prognostic subtypes of multiple myeloma. *Leuk Off J Leuk Soc Am Leuk Res Fund, UK* [Internet]. 2006 Jan [cited 2010 Oct 30]; 20(1):174–6. Available from: <http://www.ncbi.nlm.nih.gov/pubmed/16239907>

5. Standal T, Borset M, Lenhoff S, Wisloff F, Stordal B, Sundan A, et al. Serum insulinlike growth factor is not elevated in patients with multiple myeloma but is still a prognostic factor. *Blood* [Internet]. 2002 Dec 1 [cited 2011 May 4]; 100(12):3925–9. Available from: <http://www.ncbi.nlm.nih.gov/pubmed/12393395> PMID: [12393395](https://pubmed.ncbi.nlm.nih.gov/12393395/)
6. Birmann BM, Neuhauser ML, Rosner B, Albanes D, Buring JE, Giles GG, et al. Prediagnosis biomarkers of insulin-like growth factor-1, insulin, and interleukin-6 dysregulation and multiple myeloma risk in the Multiple Myeloma Cohort Consortium. *Blood* [Internet]. 2012 Dec 13 [cited 2014 May 31]; 120(25):4929–37. Available from: <http://www.pubmedcentral.nih.gov/articlerender.fcgi?artid=3525019&tool=pmcentrez&rendertype=abstract> doi: [10.1182/blood-2012-03-417253](https://doi.org/10.1182/blood-2012-03-417253) PMID: [23074271](https://pubmed.ncbi.nlm.nih.gov/23074271/)
7. Moreaux J, Hose D, Kassambara A, Reme T, Moine P, Requirand G, et al. Osteoclast-gene expression profiling reveals osteoclast-derived CCR2 chemokines promoting myeloma cell migration. *Blood* [Internet]. 2011 Jan 27 [cited 2016 Jan 13]; 117(4):1280–90. Available from: <http://www.pubmedcentral.nih.gov/articlerender.fcgi?artid=4009699&tool=pmcentrez&rendertype=abstract> doi: [10.1182/blood-2010-04-279760](https://doi.org/10.1182/blood-2010-04-279760) PMID: [21097672](https://pubmed.ncbi.nlm.nih.gov/21097672/)
8. Moreau P, Cavallo F, Leleu X, Hulin C, Amiot M, Descamps G, et al. Phase I study of the anti insulin-like growth factor 1 receptor (IGF-1R) monoclonal antibody, AVE1642, as single agent and in combination with bortezomib in patients with relapsed multiple myeloma. *Leukemia* [Internet]. 2011 May [cited 2014 May 31]; 25(5):872–4. Available from: <http://www.ncbi.nlm.nih.gov/pubmed/21321571> doi: [10.1038/leu.2011.4](https://doi.org/10.1038/leu.2011.4) PMID: [21321571](https://pubmed.ncbi.nlm.nih.gov/21321571/)
9. Yee D. Insulin-like growth factor receptor inhibitors: baby or the bathwater? *J Natl Cancer Inst* [Internet]. 2012 Jul 3 [cited 2015 Sep 14]; 104(13):975–81. Available from: <http://www.pubmedcentral.nih.gov/articlerender.fcgi?artid=3634550&tool=pmcentrez&rendertype=abstract> doi: [10.1093/jnci/djs258](https://doi.org/10.1093/jnci/djs258) PMID: [22761272](https://pubmed.ncbi.nlm.nih.gov/22761272/)
10. Bieghs L, Lub S, Fostier K, Maes K, Van Valckenborgh E, Menu E, et al. The IGF-1 receptor inhibitor picropodophyllin potentiates the anti-myeloma activity of a BH3-mimetic. *Oncotarget* [Internet]. 2014 Nov 30 [cited 2015 Mar 3]; 5(22):11193–208. Available from: <http://www.pubmedcentral.nih.gov/articlerender.fcgi?artid=4294345&tool=pmcentrez&rendertype=abstract> PMID: [25008202](https://pubmed.ncbi.nlm.nih.gov/25008202/)
11. Kuhn DJ, Berkova Z, Jones RJ, Woessner R, Bjorklund CC, Ma W, et al. Targeting the insulin-like growth factor-1 receptor to overcome bortezomib resistance in preclinical models of multiple myeloma. *Blood* [Internet]. 2012 Oct 18 [cited 2014 May 31]; 120(16):3260–70. Available from: <http://www.pubmedcentral.nih.gov/articlerender.fcgi?artid=3476538&tool=pmcentrez&rendertype=abstract> doi: [10.1182/blood-2011-10-386789](https://doi.org/10.1182/blood-2011-10-386789) PMID: [22932796](https://pubmed.ncbi.nlm.nih.gov/22932796/)
12. Baxter RC. IGF binding proteins in cancer: mechanistic and clinical insights. *Nat Rev Cancer* [Internet]. 2014 May [cited 2014 May 25]; 14(5):329–41. Available from: <http://www.ncbi.nlm.nih.gov/pubmed/24722429> doi: [10.1038/nrc3720](https://doi.org/10.1038/nrc3720) PMID: [24722429](https://pubmed.ncbi.nlm.nih.gov/24722429/)
13. Landgren O, Kyle RA, Pfeiffer RM, Katzmann JA, Caporaso NE, Hayes RB, et al. Monoclonal gammopathy of undetermined significance (MGUS) consistently precedes multiple myeloma: a prospective study. *Blood* [Internet]. 2009 May 28 [cited 2014 Jun 20]; 113(22):5412–7. Available from: <http://www.pubmedcentral.nih.gov/articlerender.fcgi?artid=2689042&tool=pmcentrez&rendertype=abstract> doi: [10.1182/blood-2008-12-194241](https://doi.org/10.1182/blood-2008-12-194241) PMID: [19179464](https://pubmed.ncbi.nlm.nih.gov/19179464/)
14. Bolomsky A, Hose D, Schreder M, Seckinger A, Lipp S, Klein B, et al. Insulin like growth factor binding protein 7 (IGFBP7) expression is linked to poor prognosis but may protect from bone disease in multiple myeloma. *J Hematol Oncol* [Internet]. 2015 Jan [cited 2015 Oct 20]; 8(1):10. Available from: <http://www.pubmedcentral.nih.gov/articlerender.fcgi?artid=4333268&tool=pmcentrez&rendertype=abstract>
15. Grotendorst GR, Lau LF, Perbal B. CCN proteins are distinct from, and should not be considered members of, the insulin-like growth factor-binding protein superfamily. *J Clin Endocrinol Metab* [Internet]. 2001 Feb [cited 2016 Feb 23]; 86(2):944–5. Available from: <http://www.ncbi.nlm.nih.gov/pubmed/11158072> PMID: [11158072](https://pubmed.ncbi.nlm.nih.gov/11158072/)
16. Kristensen IB, Pedersen L, Rø TB, Christensen JH, Lyng MB, Rasmussen LM, et al. Decorin is down-regulated in multiple myeloma and MGUS bone marrow plasma and inhibits HGF-induced myeloma plasma cell viability and migration. *Eur J Haematol* [Internet]. 2013 Sep [cited 2015 Jul 20]; 91(3):196–200. Available from: <http://www.ncbi.nlm.nih.gov/pubmed/23607294> doi: [10.1111/ejh.12125](https://doi.org/10.1111/ejh.12125) PMID: [23607294](https://pubmed.ncbi.nlm.nih.gov/23607294/)
17. Conover CA, Kiefer MC, Zapf J. Posttranslational regulation of insulin-like growth factor binding protein-4 in normal and transformed human fibroblasts. Insulin-like growth factor dependence and biological studies. *J Clin Invest* [Internet]. 1993 Mar [cited 2015 Sep 15]; 91(3):1129–37. Available from: <http://www.pubmedcentral.nih.gov/articlerender.fcgi?artid=288069&tool=pmcentrez&rendertype=abstract> PMID: [7680662](https://pubmed.ncbi.nlm.nih.gov/7680662/)
18. Boldt HB, Conover CA. Overexpression of pregnancy-associated plasma protein-A in ovarian cancer cells promotes tumor growth in vivo. *Endocrinology* [Internet]. 2011 Apr [cited 2015 Feb 26]; 152(4):1470–8. Available from: <http://www.ncbi.nlm.nih.gov/pubmed/21303951> doi: [10.1210/en.2010-1095](https://doi.org/10.1210/en.2010-1095) PMID: [21303951](https://pubmed.ncbi.nlm.nih.gov/21303951/)

19. Yu H, Mistry J, Nicar MJ, Khosravi MJ, Diamandis A, van Doorn J, et al. Insulin-like growth factors (IGF-I, free IGF-I and IGF-II) and insulin-like growth factor binding proteins (IGFBP-2, IGFBP-3, IGFBP-6, and ALS) in blood circulation. *J Clin Lab Anal* [Internet]. 1999 Jan [cited 2015 Oct 13]; 13(4):166–72. Available from: <http://www.ncbi.nlm.nih.gov/pubmed/10414596> PMID: [10414596](#)
20. Okazaki R, Riggs BL, Conover CA. Glucocorticoid regulation of insulin-like growth factor-binding protein expression in normal human osteoblast-like cells. *Endocrinology* [Internet]. 1994 Jan [cited 2015 Oct 9]; 134(1):126–32. Available from: <http://www.ncbi.nlm.nih.gov/pubmed/7506203> PMID: [7506203](#)
21. Fleming JM, Leibowitz BJ, Kerr DE, Cohick WS. IGF-I differentially regulates IGF-binding protein expression in primary mammary fibroblasts and epithelial cells. *J Endocrinol* [Internet]. 2005 Jul 1 [cited 2015 Oct 9]; 186(1):165–78. Available from: <http://joe.endocrinology-journals.org/content/186/1/165.abstract> PMID: [16002546](#)
22. Conover C a. Insulin-like growth factor-binding proteins and bone metabolism. *Am J Physiol Endocrinol Metab* [Internet]. 2008 Jan [cited 2011 Jan 31]; 294(1):E10–4. Available from: <http://www.ncbi.nlm.nih.gov/pubmed/18003717> PMID: [18003717](#)
23. Fisher MC, Meyer C, Garber G, Dealy CN. Role of IGFBP2, IGF-I and IGF-II in regulating long bone growth. *Bone* [Internet]. 2005 Dec [cited 2015 Aug 20]; 37(6):741–50. Available from: <http://www.ncbi.nlm.nih.gov/pubmed/16183342> PMID: [16183342](#)
24. Monget P, Mazerbourg S, Delpuech T, Maurel M- C, Manière S, Zapf J, et al. Pregnancy-associated plasma protein-A is involved in insulin-like growth factor binding protein-2 (IGFBP-2) proteolytic degradation in bovine and porcine preovulatory follicles: identification of cleavage site and characterization of IGFBP-2 degradation. *Biol Reprod* [Internet]. 2003 Jan [cited 2015 Oct 12]; 68(1):77–86. Available from: <http://www.ncbi.nlm.nih.gov/pubmed/12493698> PMID: [12493698](#)
25. Bret C, Hose D, Reme T, Kassambara A, Seckinger A, Meißner T, et al. Gene expression profile of ADAMs and ADAMTS metalloproteinases in normal and malignant plasma cells and in the bone marrow environment. *Exp Hematol* [Internet]. Elsevier Ltd; 2011 Feb [cited 2011 Feb 25]; Available from: <http://www.ncbi.nlm.nih.gov/pubmed/21316416>
26. Lund J, Søndergaard MT, Conover CA, Overgaard MT. Heparin-binding mechanism of the IGF2/IGF-binding protein 2 complex. *J Mol Endocrinol* [Internet]. 2014 Jun [cited 2015 Oct 9]; 52(3):345–55. Available from: <http://www.ncbi.nlm.nih.gov/pubmed/24604839> doi: [10.1530/JME-13-0184](https://doi.org/10.1530/JME-13-0184) PMID: [24604839](#)
27. Soh C-L, McNeil K, Owczarek CM, Hardy MP, Fabri LJ, Pearse M, et al. Exogenous administration of protease-resistant, non-matrix-binding IGFBP-2 inhibits tumour growth in a murine model of breast cancer. *Br J Cancer* [Internet]. 2014 Jun 10 [cited 2015 Oct 24]; 110(12):2855–64. Available from: <http://www.pubmedcentral.nih.gov/articlerender.fcgi?artid=4056053&tool=pmcentrez&rendertype=abstract> doi: [10.1038/bjc.2014.232](https://doi.org/10.1038/bjc.2014.232) PMID: [24853186](#)
28. Ryan AJ, Napoletano S, Fitzpatrick PA, Currid CA, O'Sullivan NC, Harmeij JH. Expression of a protease-resistant insulin-like growth factor-binding protein-4 inhibits tumour growth in a murine model of breast cancer. *Br J Cancer* [Internet]. 2009 Jul 21 [cited 2015 Oct 24]; 101(2):278–86. Available from: <http://www.pubmedcentral.nih.gov/articlerender.fcgi?artid=2720214&tool=pmcentrez&rendertype=abstract> doi: [10.1038/sj.bjc.6605141](https://doi.org/10.1038/sj.bjc.6605141) PMID: [19536088](#)