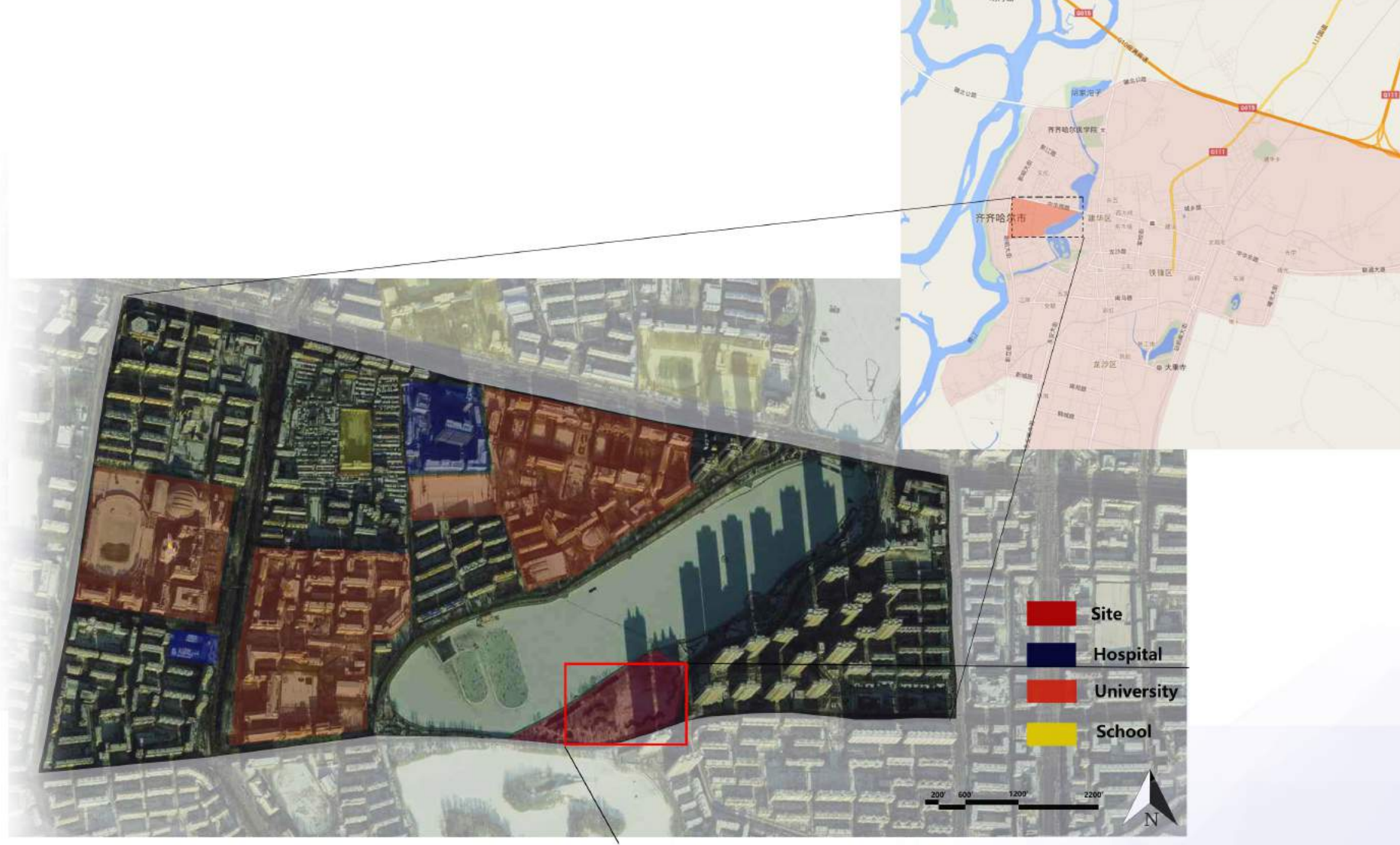
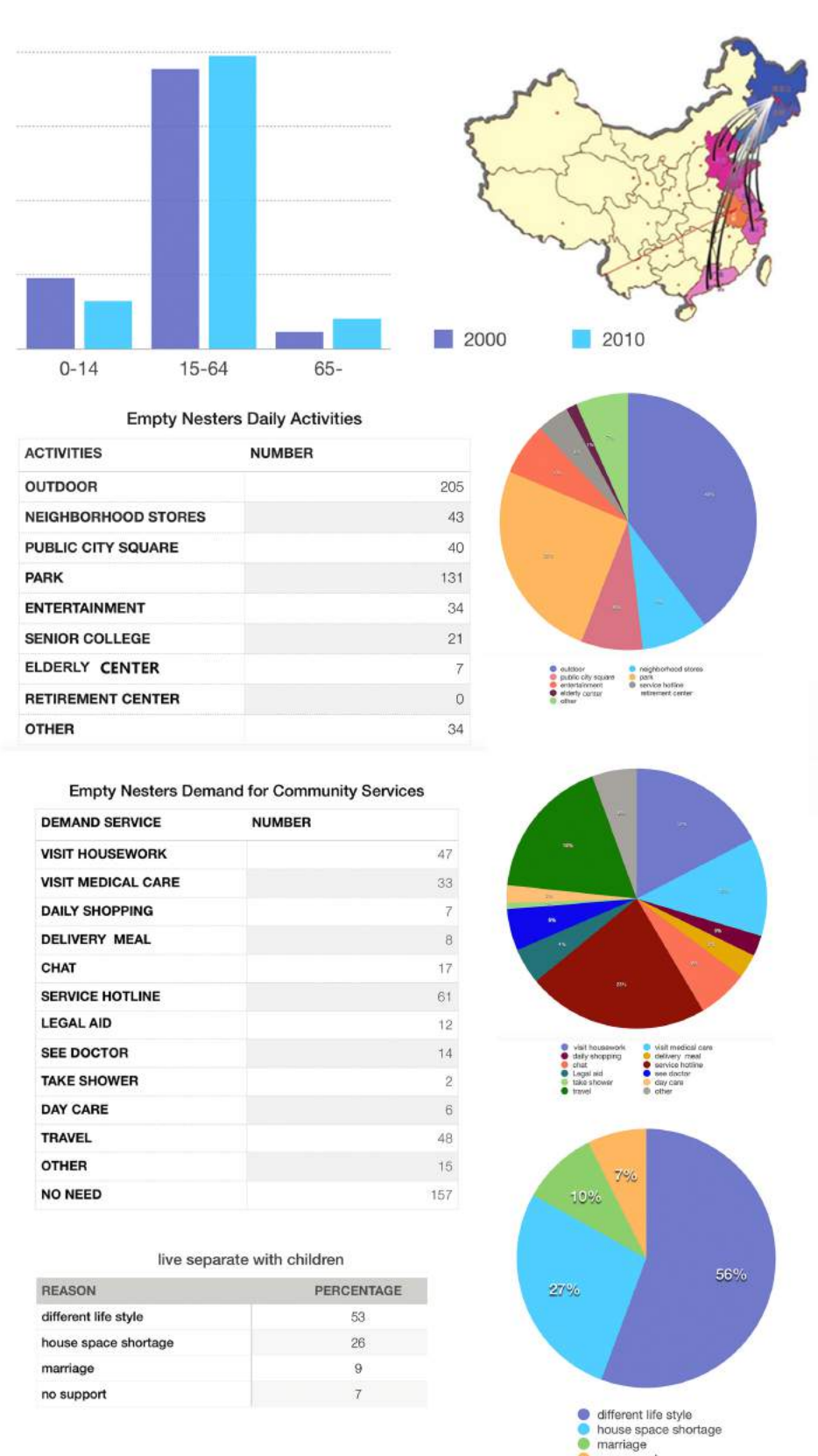




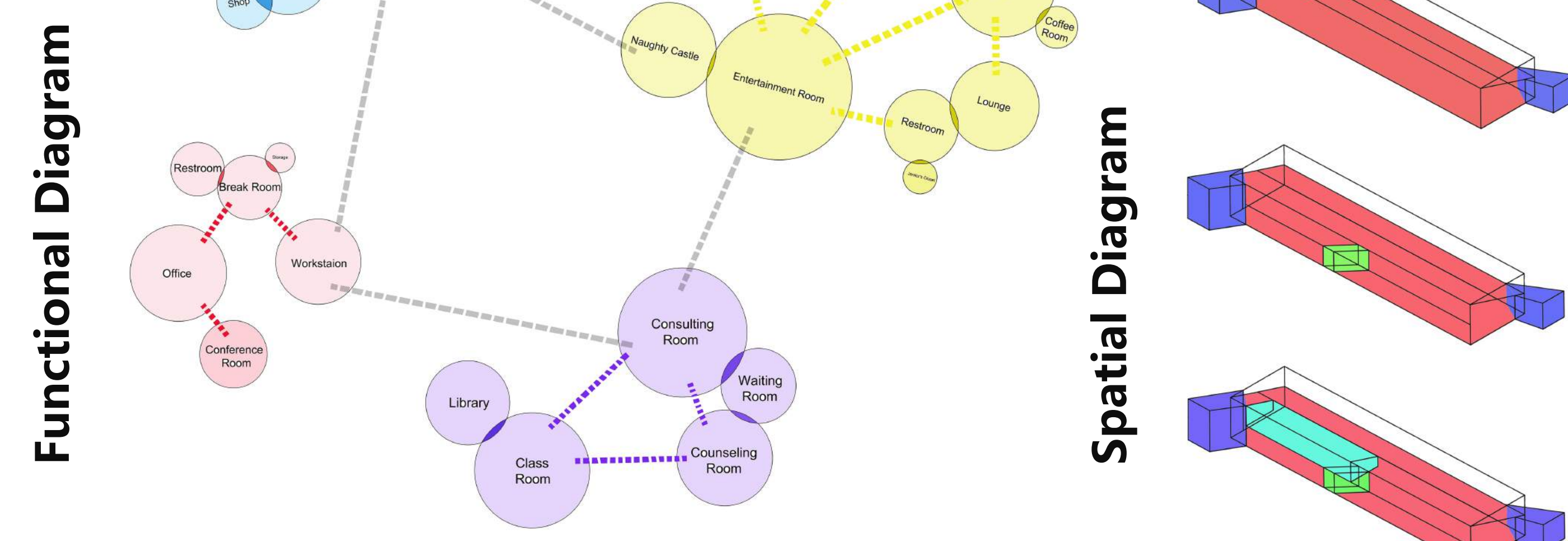
SENIOR COMMUNITY CENTER, QIQIHAR, CHINA

With the development of people's lives and increased population, aging is one problem that impacts the entire society in China. More and more elderly population puts intense pressure on the retirement system of the country, and also on each family member. How to improve the spiritual lives and material lives of seniors are the two major aspects that need to be deeply worked on (中国老年现状的分析与展望, n.d.). The population in site location, Qiqihar, China, in 2010 is 1.48 million. 8.14% of the population is over 65. It had a 2.55% increase compared with 2000 (Qiqihar, Baifu, n.d.). The fitness facilities and activities for seniors cannot meet the increased need in Qiqihar. In traditional Chinese culture, most seniors live together with their younger generation. After the One-Child Policy, the family mode becomes smaller. So with the changing of the senior support mode and family mode, many seniors are becoming empty nesters, who don't live with their children (中国老年现状的分析与展望, n.d.). A report about empty nesters living condition shows, community service and activities is essential for seniors (Chen, J. (n.d.)). The empty nesters after retirement would lose the link to society and have limited connection with their children, which would have some negative influences to their life, mind and health.

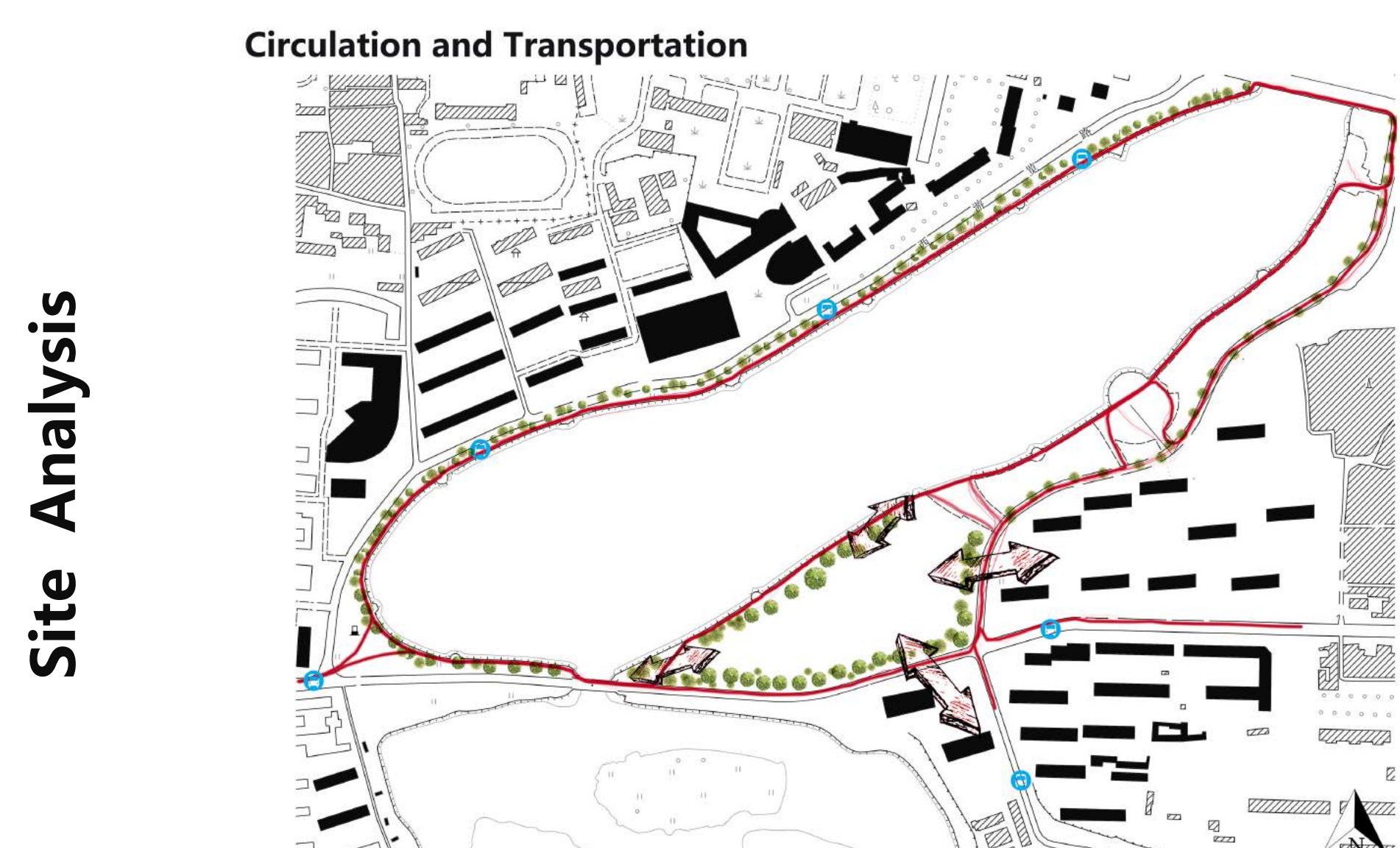
This poster will outline a suitable, harmonious senior community center in Qiqihar, which aims at alleviating the lack of senior facilities and enhancing the neighborhood communication. The senior community center aims to provide an activity and healthy care place for seniors, and at the same time, brings the landscape and city lake environment into the building. The concept involves shaping the space between community center and the loop of lake sidewalk to have a well connection with the surrounding community by using three vestibules lead people from different direction to go into the building. The building fit for the winter season, that the open indoor space to enjoy the natural and activities, and also has a welcome outdoor plaza for the summer activities. The open space, flexible circulation and appropriate activities in the center could bring people a free and friendly feeling.



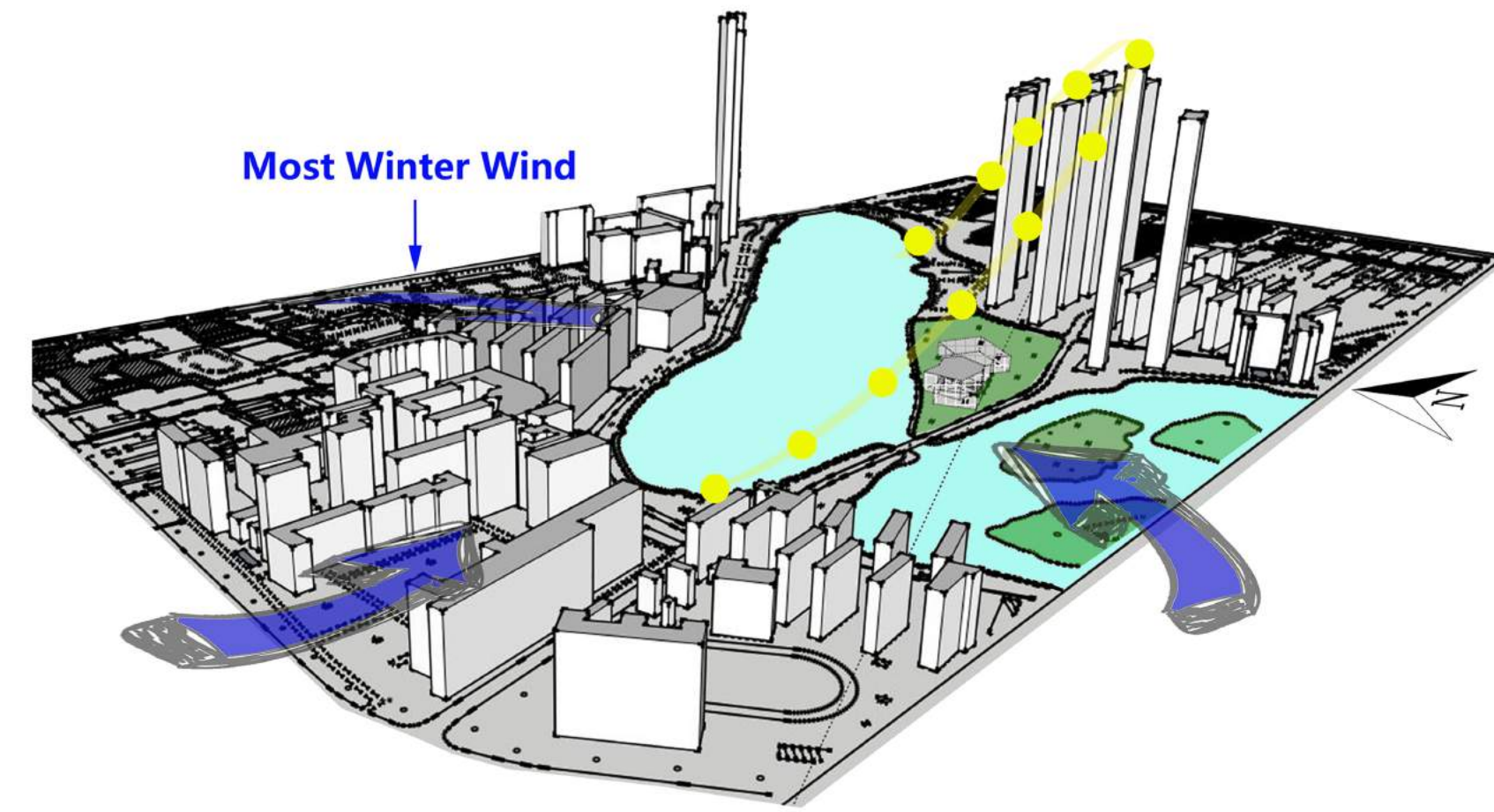
Site Plan



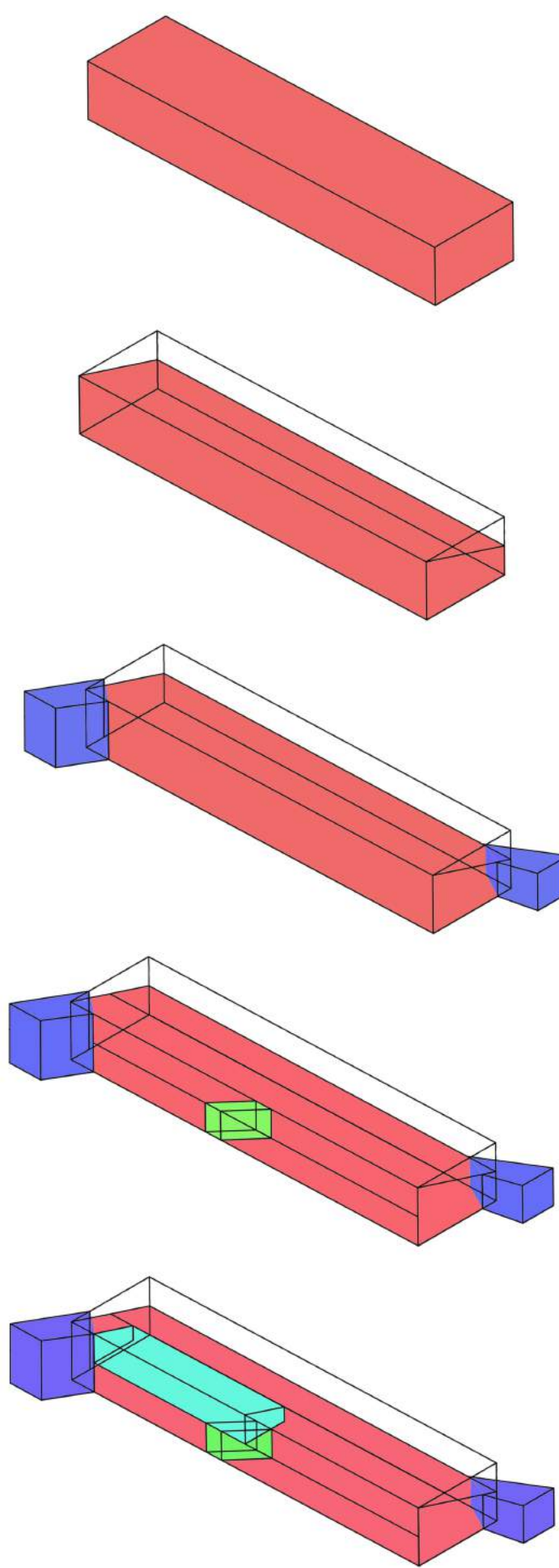
Functional Diagram



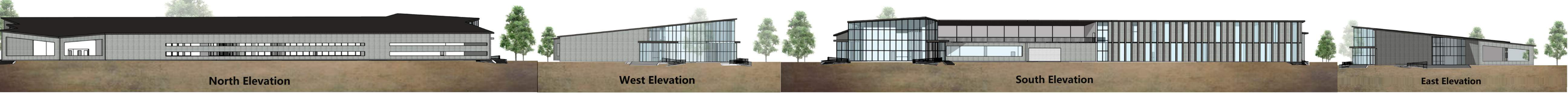
Circulation and Transportation



Most Winter Wind



Spatial Diagram

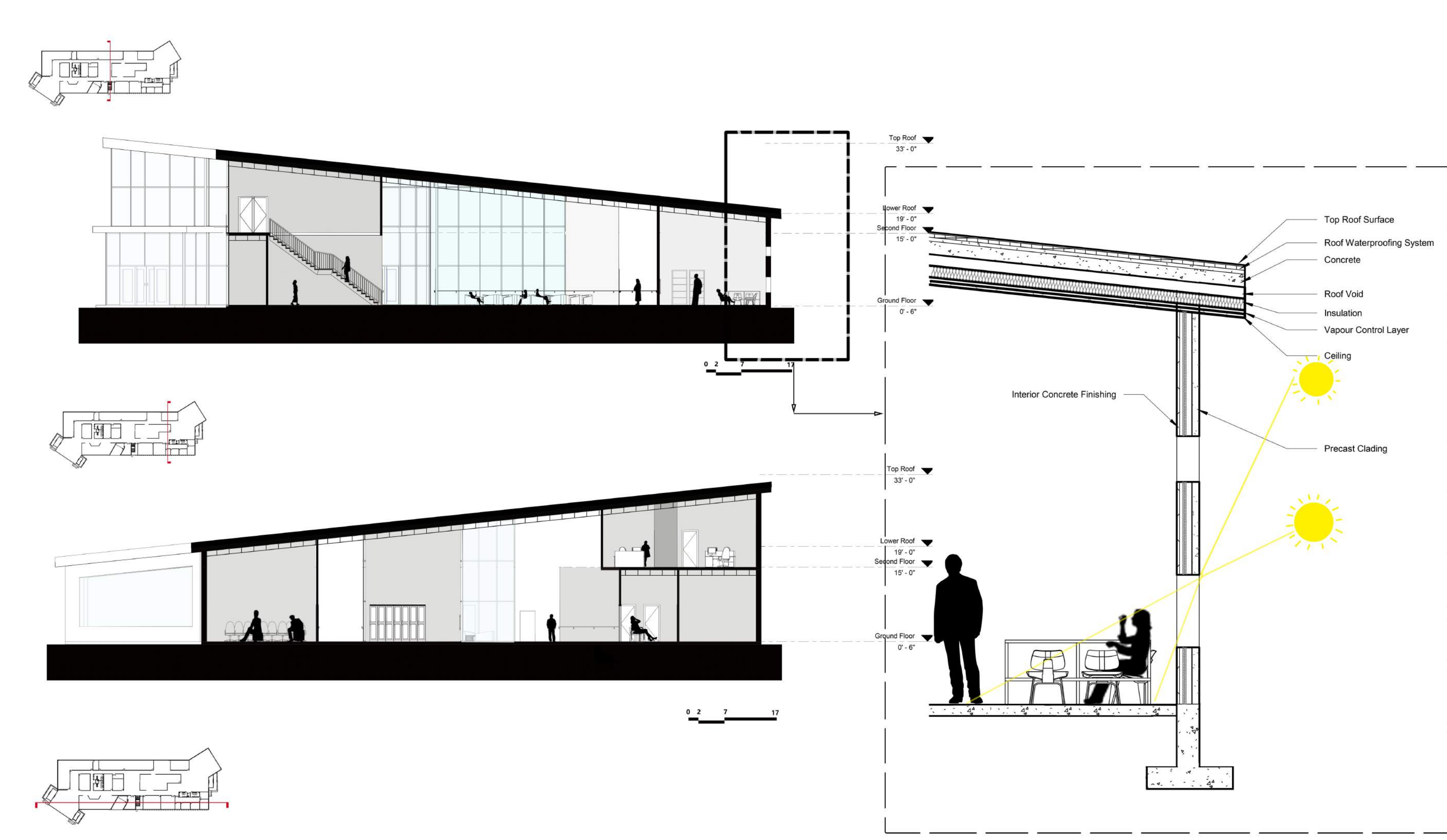


North Elevation

West Elevation

South Elevation

East Elevation



Floor Plan

- 1. Entry Vestibule
- 2. Lobby
- 3. Women Restroom
- 4. Janitor's Closet
- 5. Men Restroom
- 6. Locker & Vending Machine
- 7. General Waiting Space
- 8. Storage
- 9. Consulting Room
- 10. Consulting Room
- 11. Counseling Room
- 12. Examination Room
- 13. Computer Lab
- 14. Art & Craft Room
- 15. Children Naughty Castle
- 16. Staff Entrance
- 17. Lounge
- 18. Storage
- 19. Loading Dock
- 20. Class Room
- 21. Mechanical Space
- 22. Entertainment Room
- 23. Lounge
- 24. Women Restroom
- 25. Janitor's Closet
- 26. Men Restroom
- 27. Dance Studio
- 28. General Waiting Space
- 29. Entry Vestibule
- 30. Entry Vestibule
- 31. Fitness Room
- 32. Storage
- 33. Library
- 34. Storage
- 35. Entertainment
- 36. Theater
- 37. Multi-purpose Room
- 38. Outdoor Terrace
- 39. Staff Office
- 40. Conference Room
- 41. Manager Office
- 42. Secretary Station
- 43. Men Restroom
- 44. Women Restroom
- 45. Storage
- 46. Break Room