



Aalborg Universitet

AALBORG UNIVERSITY
DENMARK

What enhances bio-psycho-social outcome in brain injury rehabilitation? Towards a predicting model

Thomsen, Ane Søndergaard; Glintborg, Chalotte; Hansen, Tia Gitte Bondesen

Publication date:
2014

Document Version
Peer reviewed version

[Link to publication from Aalborg University](#)

Citation for published version (APA):

Thomsen, A. S., Glintborg, C., & Hansen, T. G. B. (2014). What enhances bio-psycho-social outcome in brain injury rehabilitation? Towards a predicting model. Poster session presented at Tenth World Congress on Brain Injury, San Francisco, CA, United States.

General rights

Copyright and moral rights for the publications made accessible in the public portal are retained by the authors and/or other copyright owners and it is a condition of accessing publications that users recognise and abide by the legal requirements associated with these rights.

- ? Users may download and print one copy of any publication from the public portal for the purpose of private study or research.
- ? You may not further distribute the material or use it for any profit-making activity or commercial gain
- ? You may freely distribute the URL identifying the publication in the public portal ?

Take down policy

If you believe that this document breaches copyright please contact us at vbn@aub.aau.dk providing details, and we will remove access to the work immediately and investigate your claim.



CeDAPS
AALBORG UNIVERSITY

What enhances bio-psycho-social outcome in brain injury rehabilitation? Towards a predicting model

Aalborg Kommune

NORTH DENMARK REGION

Chalotte Glintborg and Tia Hansen
(Presenter at IBIA: Ane Søndergaard Thomsen)

Center for Developmental & Applied Psychological Science, Aalborg University, Denmark

Introduction/Objectives

The long term psychosocial consequences following Acquired Brain Injury (ABI) have received little attention in rehabilitation research as well as in rehabilitation practice, compared to the physical problems. However it is becoming acknowledged that psychosocial consequences is a major challenge in current rehabilitation (Glintborg & Hansen, 2014, in prep; Hald, 2013; Morton & Wehman, 1995; Teasdale & Engberg, 2005).

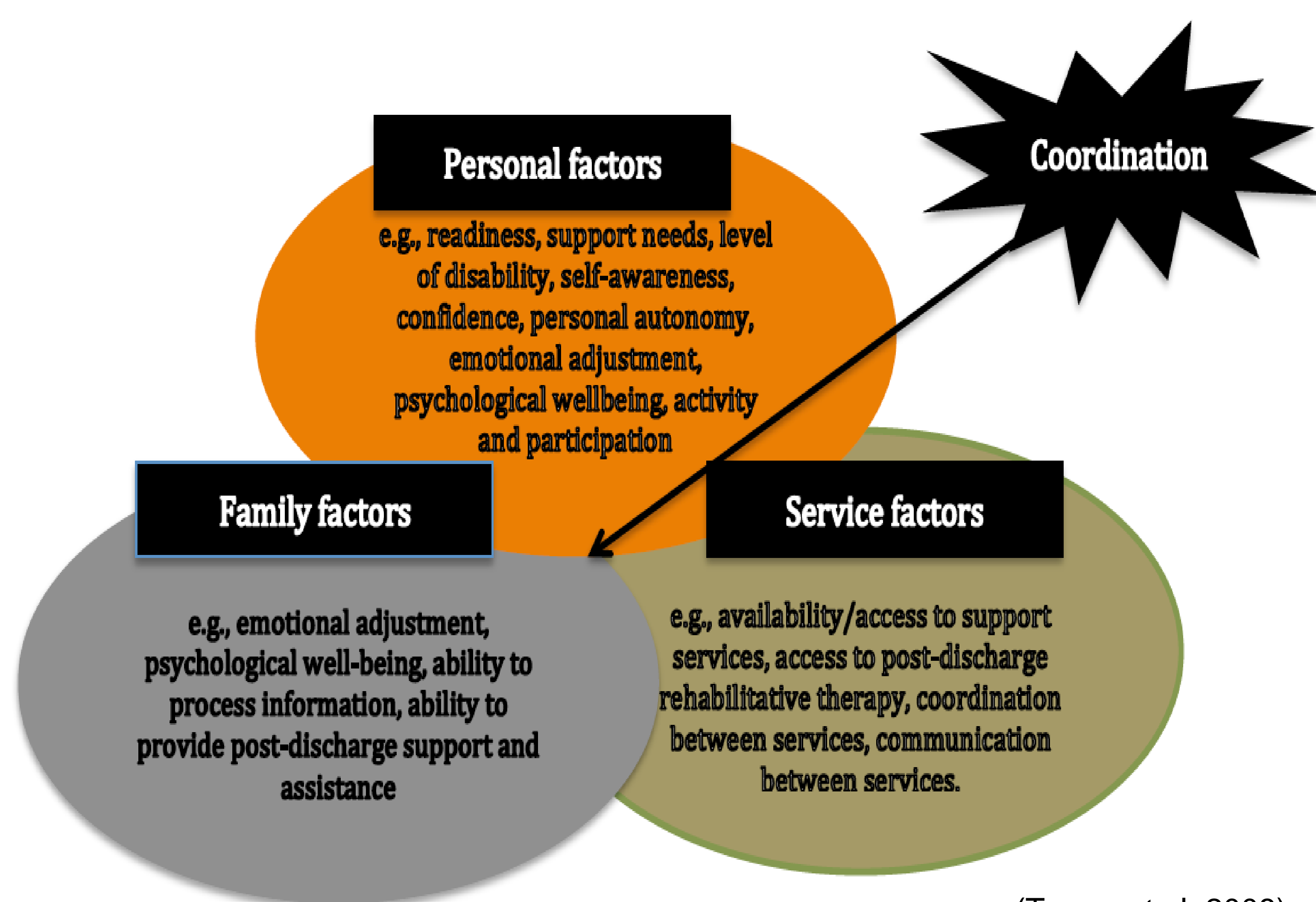
This paper describes a Mixed Methods design and some preliminary results regarding adults with ABI (N=37) two-year post injury. We investigate the bio-psycho-social rehabilitation outcome, and look for predictors of this outcome from a patient perspective. The theoretical framework is the bio-psycho-social model represented by International Classification of Functioning (ICF).



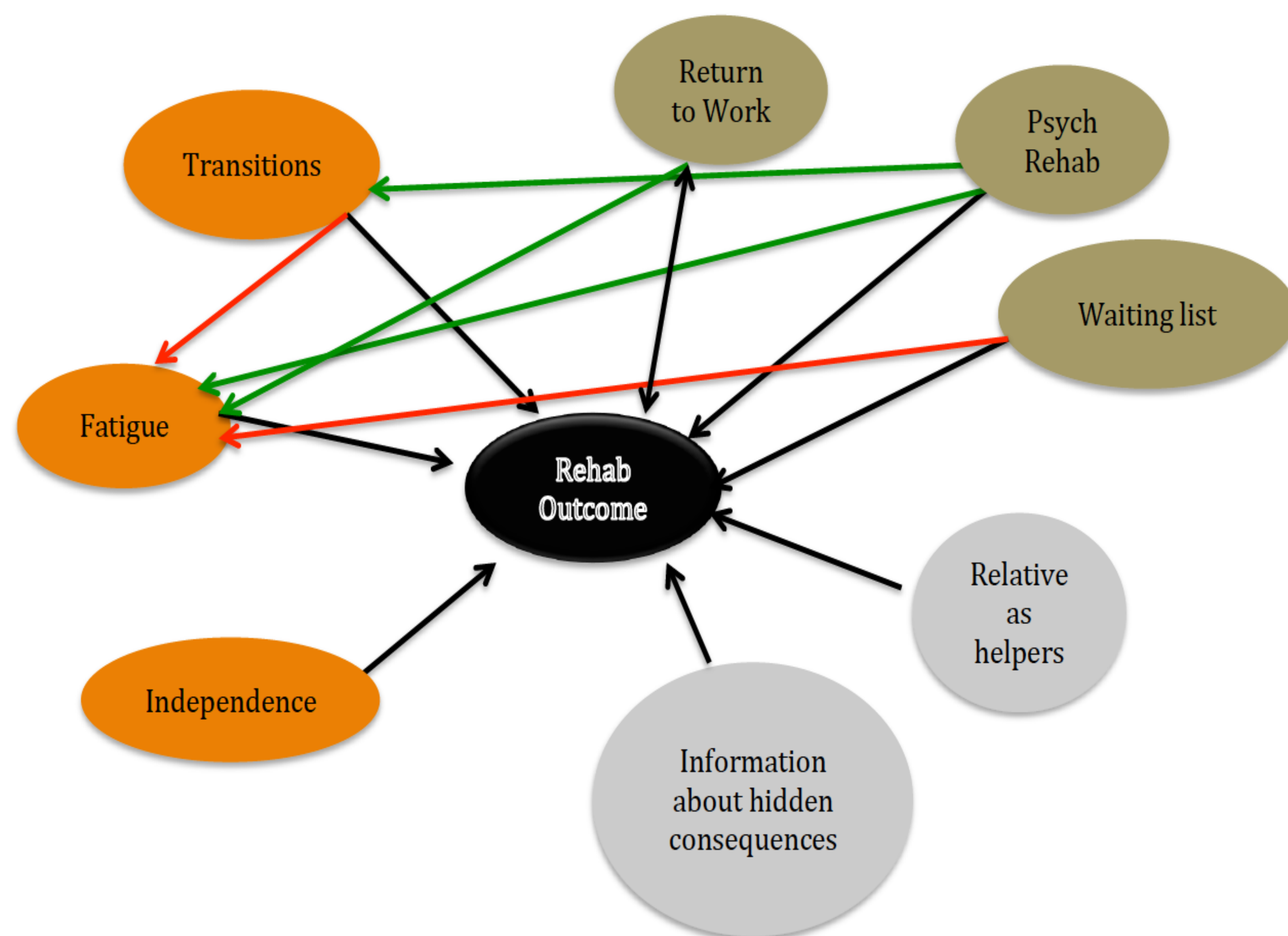
Methods

A Mixed Methods design using concurrent testing, interview and observations on a sample of 37 adults with ABI. A content analyses, inspired by Grounded Theory, was applied on the field notes from the interviews. Descriptive statistics on five rehabilitation outcomes: Functional Independence Measure (FIM), Impact on Participation and Autonomy (IPAQ-DK), Quality of Life (WHOQOL-BREF), Major Depression Inventory (MDI) and Return to Work. These measures are correlated with emerged themes from interviews with adults with ABI in order to see what enhance or restrain outcome.

Theoretical frame



Results



Conclusions

The majority of the informants reported eight major themes as important predictors of outcome. Based on these themes we developed the above model which illustrates positive, negative and interrelatedness of the themes derived from the interviews. We suggest these themes described by adults with ABI provide input for the development of theoretical model of predictors of rehabilitation outcome. By depicting influences that are likely to increase or decrease the outcome, this model could have practical impact for successful rehabilitation of people suffering from ABI as well as economic benefits for both hospital and the municipality that provide these services. An evaluation of rehabilitation outcome predictors might also assists administrators in making program-level decisions.

References

Hald, S. (2013). *Music Therapy, Acquired Brain Injury and Interpersonal Communication Competencies – A randomized crossover study on music therapy in neurological rehabilitation*, Aalborg University.

Morton, M. V., & Wehman, P. (1995). Psychosocial and emotional sequelae of individuals with traumatic brain injury: a literature review and recommendations. *Brain Injury*, 9(1), 81-92.

Teasdale, T. W., & Engberg, A. W. (2005). Psychosocial consequences of stroke: A long-term population-based follow-up. *Brain Injury*, 19(12), 1049-1058.

Turner, B.J., Fleming, J.M., Ownsworth, T.M., & Cornwell, P. L. (2008). The transition from hospital to home for individuals with acquired brain injury: A literature review and research recommendations. *Disability and Rehabilitation*, 30(16), 1153-1176.

Acknowledgement

Thanks to The Danish Board of Social Services for use of photo.
FIM license granted by Uniform Data System for Medical Rehabilitation (a division of UB Foundation Activities, Inc., "UDSMR").

Contact information

Chalotte Glintborg
Ph.D. fellow
Department of Communication and Psychology, Center for Developmental & Applied Psychological Science (CeDAPS)
Aalborg University, Kroghstræde 3, 9220 Aalborg Ø, Denmark
Telephone: (+45) 61145665
Email: cgl@hum.aau.dk
Web: www.en.aau.dk
www.cedaps.aau.dk

