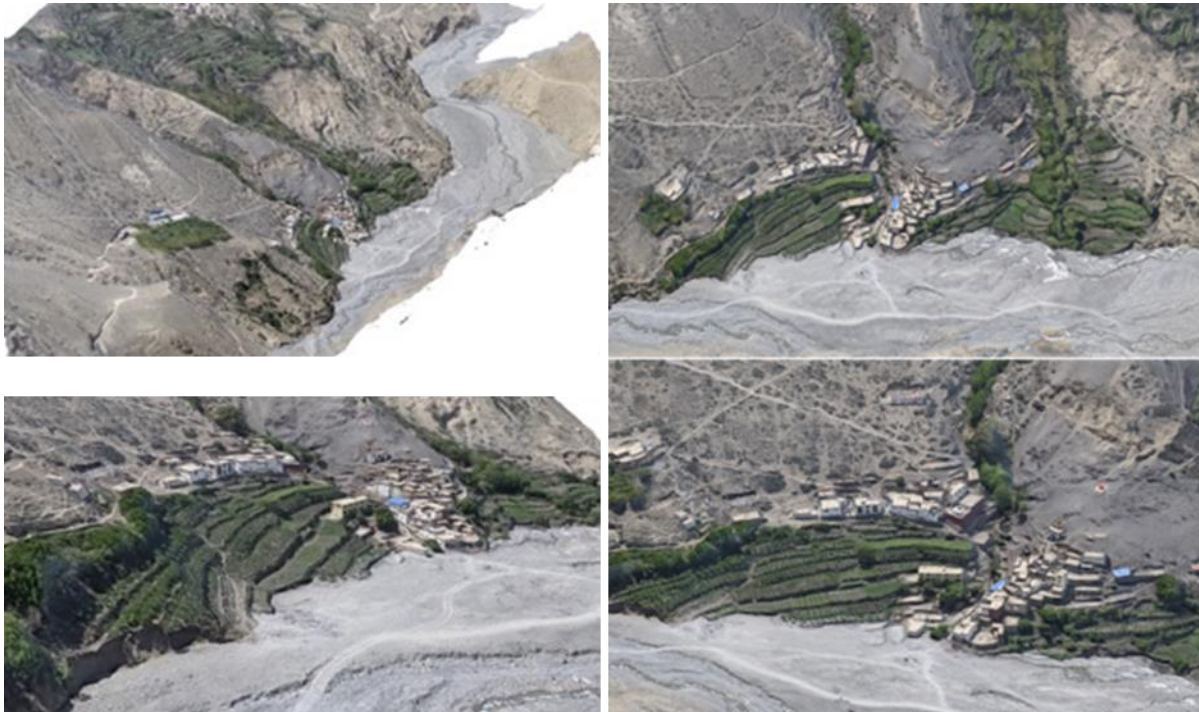


## Appendix A

**Figure A1: Lubra Valley – Angled Perspectives of the 3D Digital Model Representing the Valley Side in 2022**



**Figure A2: Location A – Angled Perspectives from Each Corner of the 3D Digital Model Representing Location A**



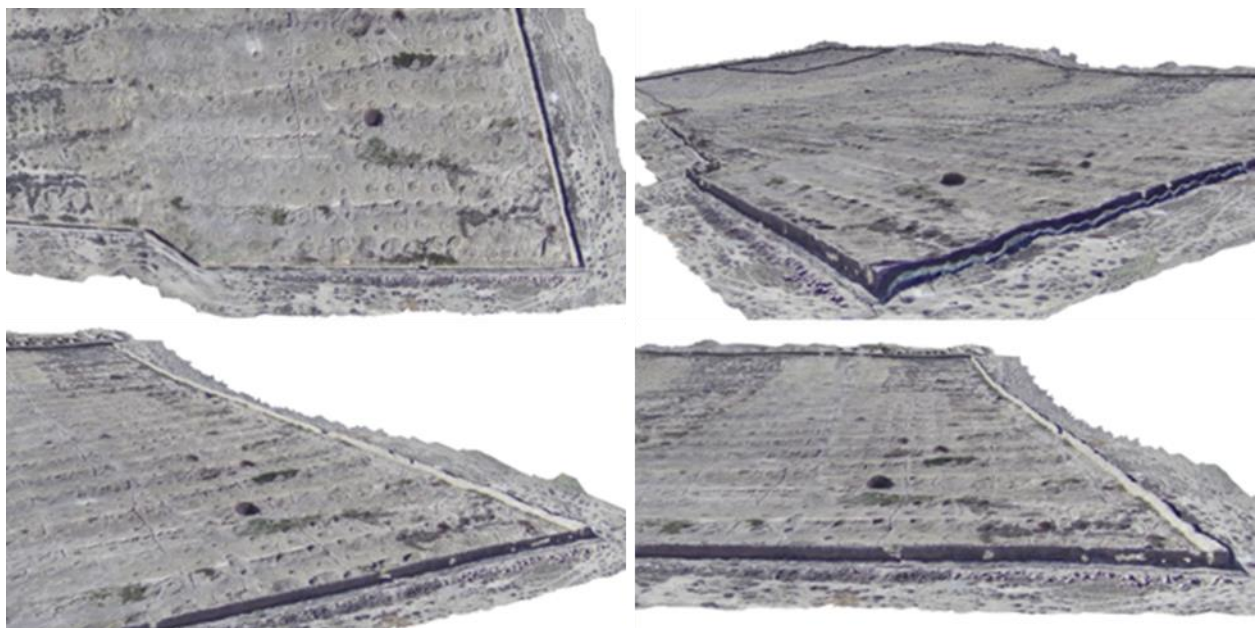
**Figure A3: Location A – Zoomed-in Perspectives of the 3D Digital Model Representing Location A**



**Figure A4: Location B – Angled Perspectives from Each Corner of the 3D Digital Model Representing Location B**



**Figure A5: Location B – Zoomed-in Perspectives of the 3D Digital Model Representing Location B**



**Figure A6: Location C – Angled Perspectives from Each Corner of the 3D Digital Model Representing Location C**



**Figure A7: Location C – Zoomed-in Perspectives of the 3D Digital Model Representing Location C**



**Figure A8: Home Construction – Angled Perspectives from the Front Corners of the 3D Digital Model Representing Co-author Gurung’s Home**



**Figure A9: Home Construction: Angled Perspectives from the Back Corners of the 3D Digital Model Representing Co-author Gurung’s Home**



**Figure A10: Main Village 2022 – Angled Front View of the 3D Digital Model Representing Lubra Village in 2022**



**Figure A11: Main Village 2022 – Left Frontal View of the 3D Digital Model Representing Lubra Village in 2022**



**Figure A12: Main Village 2022 – Zoomed Left Frontal View of the 3D Digital Model Representing Lubra Village in 2022**



**Figure A13: Main Village 2022 – Right Frontal View of the 3D Digital Model Representing Lubra Village in 2022**



**Figure A14: Main Village 2022 – Zoomed Right Frontal View of the 3D Digital Model Representing Lubra Village in 2022**



**Figure A15: Main Village 2022 – Zoomed Frontal View of the 3D Digital Model Representing Lubra Village in 2022**





**Figure A16: Main Village 2022 – Zoomed Left Aerial View of the 3D Digital Model Representing Lubra Village in 2022**



**Figure A17: Main Village 2022 – Zoomed Right Aerial View of the 3D Digital Model Representing Lubra Village in 2022**



**Figure A18: Main Village 2022 – Side View of the 3D Digital Model Representing Lubra Village in 2022**



**Figure A19: Main Village 2022 – Angled Rear Views of the 3D Digital Model Representing Lubra Village in 2022**



**Figure A20: Riverbed – Left Aerial View of the 3D Digital Model Representing the Lubra Riverbed in 2022**



**Figure A21: Riverbed – Left Side View of the 3D Digital Model Representing the Lubra Riverbed in 2022**



**Figure A22: Riverbed – Right Angled View of the 3D Digital Model Representing the Lubra Riverbed in 2022**



**Figure A23: Main Village 2016 – Frontal View of the 3D Digital Model Representing Lubra Village in 2016.**



**Figure A24: Main Village 2016 – Left Side View of the 3D Digital Model Representing Lubra Village in 2016**



**Figure A25: Main Village 2016 – Right Side View of the 3D Digital Model Representing Lubra Village in 2016**

