



Aalborg Universitet

AALBORG UNIVERSITY
DENMARK

Towards tissue engineering of corneal epithelium

Gerasimov, Maxim; Gurevich, Leonid; Zvereva, Zvereva; Makeev, Oleg; Korotkich, S.A.; Rakhmatullin, R.R.

Published in:

Proceedings of the International Summer School on Application of Scanning Probe Microscopy in Life Sciences, Soft Matter and Nanofabrication

Publication date:
2013

Document Version
Publisher's PDF, also known as Version of record

[Link to publication from Aalborg University](#)

Citation for published version (APA):

Gerasimov, M., Gurevich, L., Zvereva, Z., Makeev, O., Korotkich, S. A., & Rakhmatullin, R. R. (2013). Towards tissue engineering of corneal epithelium. In *Proceedings of the International Summer School on Application of Scanning Probe Microscopy in Life Sciences, Soft Matter and Nanofabrication* River Publishers. http://same-nano.com/Abstracts2013/Gerasimov_School2013_Abstract.pdf

General rights

Copyright and moral rights for the publications made accessible in the public portal are retained by the authors and/or other copyright owners and it is a condition of accessing publications that users recognise and abide by the legal requirements associated with these rights.

- ? Users may download and print one copy of any publication from the public portal for the purpose of private study or research.
- ? You may not further distribute the material or use it for any profit-making activity or commercial gain
- ? You may freely distribute the URL identifying the publication in the public portal ?

Take down policy

If you believe that this document breaches copyright please contact us at vbn@aub.aau.dk providing details, and we will remove access to the work immediately and investigate your claim.

Towards tissue engineering of corneal epithelium

Gerasimov M.^{1}, Gurevich L.², Zvereva A. E.¹, Makeev O. G.¹,*

Korotkich S. A.¹, Rakhmatullin R. R.³

¹⁾ Ural State Medical Academy, Ekaterinburg, Russia

²⁾ Aalborg University, Aalborg, Denmark

³⁾ Orenburg State University, Orenburg, Russia

*) E-mail mgerasimov@biocornea.ru

Tissue engineering of cornea is a regenerative technology with a big potential in cornea transplantation to restore lost vision [1]. Human cornea has at least two types of local stem cells: limbal epithelial stem cells (LESCs) [2] and corneal fibroblast (keratocytes) [3]. For LESCs expansion most of authors still use superficial corneal biopsy [4, 5] and a feeder layer from inactivated mouse 3T3-fibroblast [6, 7]. However, the corneal fibroblasts, which can be cultured in vitro, can probably be used as a feeder layer for LESCs expansion. Our new corneal biopsy protocol is available for collect two types of cells in a single small biopsy sample [8]. Taking into account that the maximal density of keratocytes is located in 10% of stroma surface, we use deep cuts biopsy (120 μm).

Primary human cornea cell culture were obtained by original mechanically fixing methods from small pieces of cornea (1-2 mm^2) from limbal zone (procedure approved by the Ural State Medical Academy Local Ethics Committee), and cultured in DMEM (high glucose) medium with 10 % fetal bovine serum. Matrix topography was measured using atomic force microscopy (NT-MDT Ntegra Aura and Life) on air and in liquid. Corneal epithelial progenitors and keratocytes mixed cell culture were seeded on the poly-hyaluronan matrix. We cultured them during 14 days submerged in media using the so-called “air-liquid” method. The harvested matrix samples were fixed in formalin and embedded in paraffin. To obtain preliminary morphological information, the sections were stained with hematoxylin and eosin (H&E) (Fig.1).

Phase contrast microscopy indicated that the primary cells from the limbal explants form a feeder-like fibroblast cells monolayer with colonies of epithelial-like cells. Cells which were cultured submerged in the media yielded 2-4 epithelial cell sheets on the matrix; while those cultured using the “air-liquid” method yielded 3-5 epithelial cell sheets on the matrix, including the basement membrane. AFM measurements on the poly-hyaluronan matrix revealed a structure of interwoven fibres with a typical size ranging from 60 to 130 nm (Fig.2). The structure remained stable in water, however the rms roughness was reduced by half as compared to the dry state, from 68 nm to 31 nm.

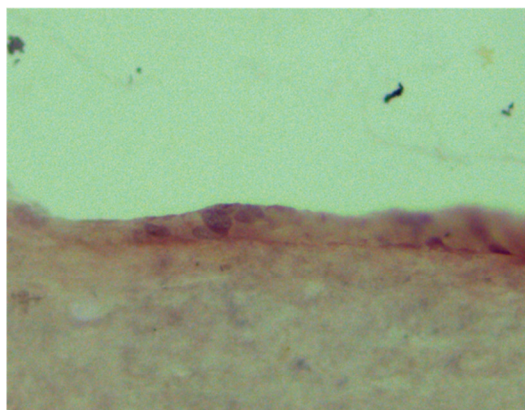


Fig. 1. Cross-section of the cell layer and basal membrane

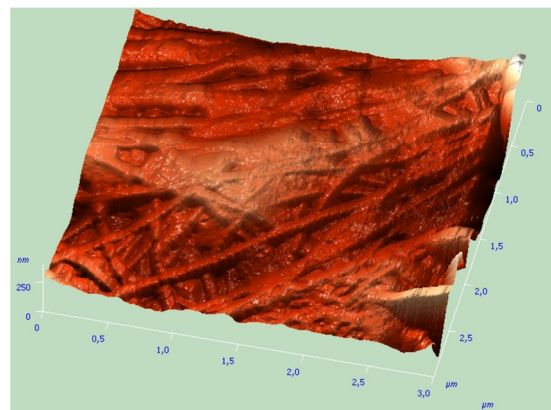


Fig. 2. Morphology of the poly-hyaluronan matrix in dry state.

In conclusion, we demonstrated that the poly-hyaluronan matrix is a suitable candidate for culturing cornea cells. The matrix possesses fine interwoven structure which is retained in aqueous solution. The cells in the cornea mixed cell culture were found to adhere to the poly-hyaluronan matrix. In the future we plan to confirm the presence of LESC and keratocytes in the culture using specific markers, e.g. p63, CK3, ABCG2 [9], Keratocan and ALDH3A1 [10].

References

1. Shah A., Brugnano J., Sun S., Vase A., Orwin E. The development of a tissue-engineered cornea: biomaterials and culture methods. *Pediatr Res* 2008;63:535–544.
2. Pellegrini G., Golisano O., Paterna P. et al. Location and clonal analysis of stem cells and their differentiated progeny in the human ocular surface. *J Cell Biol.* 1999; 145: 769-782.
3. Jester J. V., Budge A., Fisher S., Huang J. Corneal keratocytes: phenotypic and species differences in abundant protein expression and in vitro light-scattering. *Invest Ophthalmol Vis Sci.* 2005;46:2369-2378.
4. Tsai R. J. F., Li L. M., Chen J. K. Reconstruction of damaged corneas by transplantation of autologous limbal epithelial cells. *N Engl J Med.* 2000; 343: 86-93.
5. López-Paniagua M., Nieto-Miguel T., de la Mata A. Consecutive expansion of limbal epithelial stem cells from a single limbal biopsy. *Curr Eye Res.* 2013;38:537-549.
6. Pellegrini G., Traverso C. E., Franzi A. T. et al. Long-term restoration of damaged corneal surfaces with autologous cultivated corneal epithelium. *Lancet.* 1997;349:990-993
7. Bath C., Yang S., Muttuvelu D. et al. Hypoxia is a key regulator of limbal epithelial stem cell growth and differentiation. *Stem Cell Res.* 2013;10:349-360.
8. Gerasimov M. Y., Korotkich S. A., Knyazeva E.S. Method of corneal biopsy. Patent 2428959 (RU), 2010.
9. Loureiro R. R., Cristovam P. C., Martins C. M. et al. Comparison of culture media for ex vivo cultivation of limbal epithelial progenitor cells. *Mol Vis* 2013;19:69-77.
10. Pinnamaneni N., Funderburgh J. L. Concise review: Stem cells in the corneal stroma. *Stem Cells* 2012;30:1059-1063.