

## Southern Illinois University Carbondale OpenSIUC

Publications

Department of Physics

4-2006

# Magnetocaloric Properties of the $\text{Ni}_2\text{Mn}_{1-x}(\text{Cu,Co})_x\text{Ga}$ Heusler Alloys

A. M. Gomes

*Federal University of Rio de Janeiro*

M. Khan

*Southern Illinois University Carbondale*

S. Stadler

*Southern Illinois University Carbondale*

N. Ali

*Southern Illinois University Carbondale*

I. Dubenko

*Centro Brasileiro de Pesquisas Físicas*

*See next page for additional authors*

Follow this and additional works at: [http://opensiuc.lib.siu.edu/phys\\_pubs](http://opensiuc.lib.siu.edu/phys_pubs)

© 2006 American Institute of Physics

Published in *Journal of Applied Physics*, Vol. 99 No. 8 (2006) at doi: [10.1063/1.2164415](https://doi.org/10.1063/1.2164415)

### Recommended Citation

Gomes, A. M., Khan, M., Stadler, S., Ali, N., Dubenko, I., Takeuchi, A. Y. and Guimarães, A. P. "Magnetocaloric Properties of the  $\text{Ni}_2\text{Mn}_{1-x}(\text{Cu,Co})_x\text{Ga}$  Heusler Alloys." (Apr 2006).

This Article is brought to you for free and open access by the Department of Physics at OpenSIUC. It has been accepted for inclusion in Publications by an authorized administrator of OpenSIUC. For more information, please contact [opensiuc@lib.siu.edu](mailto:opensiuc@lib.siu.edu).

---

**Authors**

A. M. Gomes, M. Khan, S. Stadler, N. Ali, I. Dubenko, A. Y. Takeuchi, and A. P. Guimarães

## Magnetocaloric properties of the $\text{Ni}_2\text{Mn}_{1-x}(\text{Cu}, \text{Co})_x\text{Ga}$ Heusler alloys

A. M. Gomes<sup>a)</sup>*Instituto de Física, Universidade Federal do Rio de Janeiro, C.P. 68528, 21941-972 Rio de Janeiro, Brazil*

M. Khan, S. Stadler, and N. Ali

*Department of Physics, Southern Illinois University, Carbondale, Illinois 62901*

I. Dubenko, A. Y. Takeuchi, and A. P. Guimarães

*Centro Brasileiro de Pesquisas Físicas, Rua Dr. Xavier Sigaud 150, 22290-180 Rio de Janeiro, Brazil*

(Presented on 2 November 2005; published online 18 April 2006)

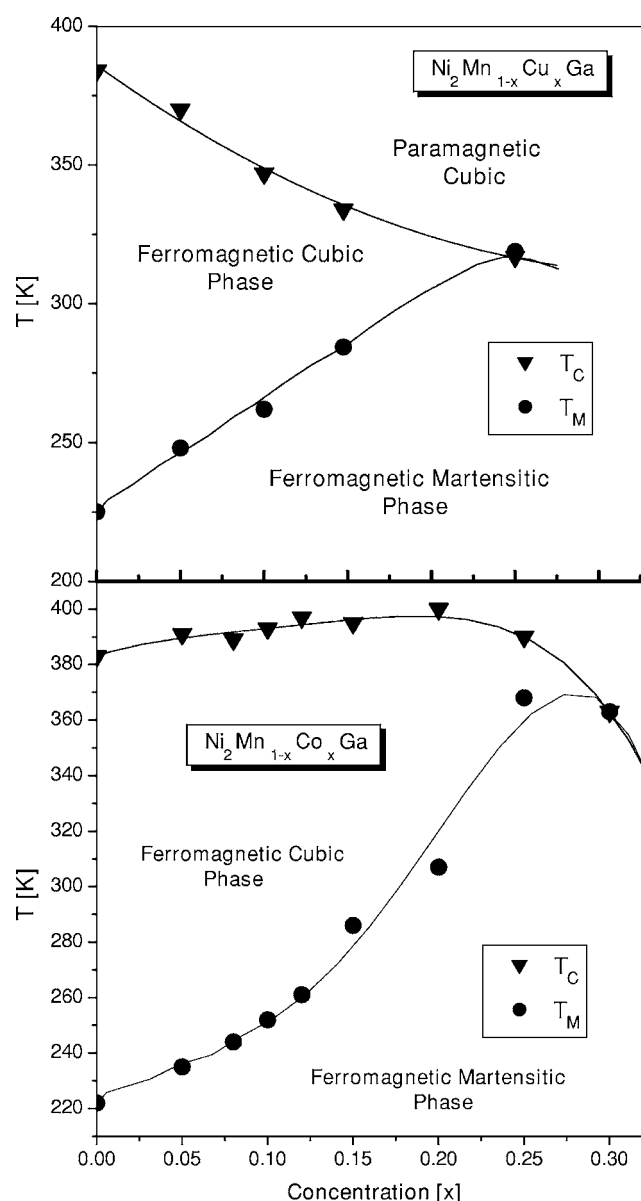
We have investigated the magnetocaloric properties on the  $\text{Ni}_2\text{Mn}_{1-x}\text{A}_x\text{Ga}$  Heusler alloys with partial substitution of Mn by  $A=\text{Co}$  ( $x=0.10, 0.20,$  and  $0.30$ ) and Cu ( $x=0.15$  and  $0.20$ ) in the vicinity of the martensitic transition by measuring magnetization curves at magnetic field up to 20 kOe and in the temperature range of 250–300 K. The changes of the magnetic part of entropy dependence on magnetic field and temperature have been evaluated. © 2006 American Institute of Physics. [DOI: 10.1063/1.2164415]

The interest on the magnetocaloric properties of materials have renewed attention on the last decade since Brown<sup>1</sup> has shown that magnetic materials can be successfully applied to magnetic refrigeration at room temperature. The magnetocaloric effect is intrinsic to all materials and is remarkable at phase transitions when the magnetic order of the materials is changed. A decrease in the magnetic part of entropy at the phase transition from ferromagnetic to paramagnetic state at the Curie temperature ( $T_C$ ) is compensated by the increase in the lattice entropy.<sup>2</sup> Structural and magnetic transitions occurring concurrently at the same temperature are responsible for the giant magnetocaloric effect in  $\text{Gd}_5\text{Si}_2\text{Ge}_2$  (Ref. 3) and some recent reports indicate that the same effect occurs in the  $\text{Ni}_2\text{MnGa}$ -based system.<sup>4</sup>

The  $\text{Ni}_2\text{MnGa}$ -based Heusler alloys are known as a magnetic shape-memory material which undergo a first-order structural transition, the martensitic transition, at  $T=T_M$  below  $T_C$ .<sup>5</sup> The variation in stoichiometry and composition of Ni–Mn–Co–Ga Heusler alloys can result in noticeable changes of  $T_C$  and  $T_M$ .<sup>6</sup>

The concentration dependencies of  $T_M$  and  $T_C$  for  $\text{Ni}_2\text{Mn}_{1-x}\text{Co}_x\text{Ga}$  and  $\text{Ni}_2\text{Mn}_{1-x}\text{Cu}_x\text{Ga}$  systems are shown in Fig. 1. The increasing concentration of doped metals leads to the increase of  $T_M$  and decrease of  $T_C$ , and as a result, only the transition from paramagnetic cubic to ferromagnetic martensitic phase is observed at  $T_M=T_C$  starting from  $x=0.25$  and  $0.30$  for  $\text{Ni}_2\text{Mn}_{1-x}\text{Cu}_x\text{Ga}$  and  $\text{Ni}_2\text{Mn}_{1-x}\text{Co}_x\text{Ga}$  systems, respectively.<sup>5</sup> Thus, these two systems provide the opportunity to study the magnetocaloric effect (MCE) at three different types of phase transitions.

Stoichiometric polycrystalline ingots of  $\text{Ni}_2\text{Mn}_{1-x}\text{Cu}_x\text{Ga}$  and  $\text{Ni}_2\text{Mn}_{1-x}\text{Co}_x\text{Ga}$  were prepared by conventional arc-melting technique in argon atmosphere from high-purity Ni, Mn, Ga, Co, and Cu. X-rays-diffraction measurements at room temperature were conducted for phase composition and lattice-constant determination. The samples were annealed

FIG. 1.  $(T-x)$ -phase diagram for  $\text{Ni}_2\text{Mn}_{1-x}\text{Cu}_x\text{Ga}$  and  $\text{Ni}_2\text{Mn}_{1-x}\text{Co}_x\text{Ga}$ .<sup>a)</sup>Electronic mail: amgomes@if.ufrj.br

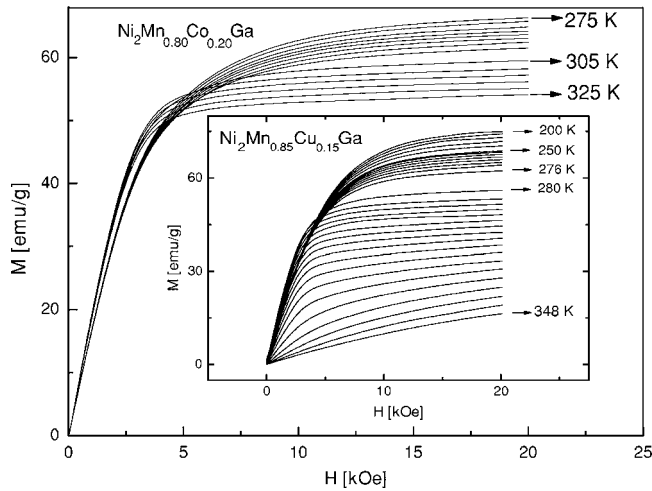


FIG. 2. The typical results of isothermal magnetization measurements  $M(H)$  for the  $\text{Ni}_2\text{Mn}_{0.80}\text{Co}_{0.20}\text{Ga}$ . Inset:  $M(H)$  for the  $\text{Ni}_2\text{Mn}_{0.85}\text{Cu}_{0.15}\text{Ga}$ .

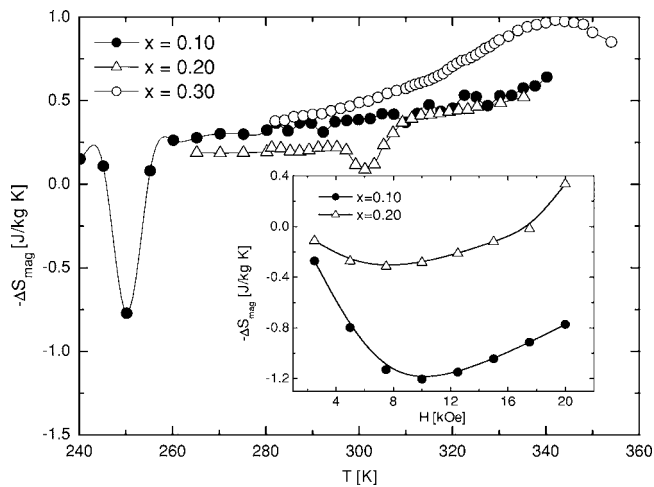


FIG. 3.  $\text{Ni}_2\text{Mn}_{1-x}\text{Co}_x\text{Ga}$  magnetic entropy change for  $\Delta H = +20$  kOe and compounds with  $x=0.10, 0.20,$  and  $0.30$ . Inset: field dependence of  $\Delta S_{\text{mag}}$  at  $T=T_M$ .

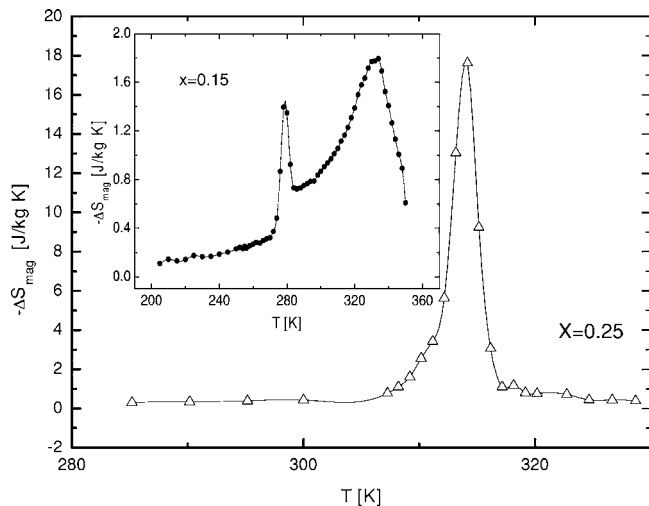


FIG. 4.  $\text{Ni}_2\text{Mn}_{1-x}\text{Cu}_x\text{Ga}$  magnetic entropy change for  $\Delta H = +20$  kOe and compounds with  $x=0.15$  and  $0.25$ .

under dynamic vacuum at  $T=900$  °C for 72 h and slowly cooled down to room temperature.

Typical magnetization isotherms  $M(H)$  of  $\text{Ni}_2\text{Mn}_{1-x}\text{A}_x\text{Ga}$  for  $A=\text{Co}$  and  $\text{Cu}$  are shown in Fig. 2. As it can be seen from Fig. 2 the lowering of temperature results in jumplike decrease or increase of the magnetization at low- and high-magnetic-field regions respectively, for both systems below  $T_M$ . Due to the higher magnetocrystalline anisotropy, the parent cubic phase is more easily oriented by the magnetic field than the tetragonal martensitic phase. This effect occurs at magnetic fields  $H < 5$  kOe; after that, its behavior is reversed. For the Co sample with  $x=0.30$ , not shown here, a typical ferromagnetic to paramagnetic transition was observed.

For the Cu-doped sample, we have  $T_M$  and  $T_C$  approaching to each other as the Cu concentration increases, as shown in Fig. 1. The optimal concentration occurs for the Cu sample with  $x=0.25$ , where the martensitic and magnetic transition temperatures coincide at  $(314 \pm 1)$  K.

From the  $M(H)$  curves we calculate the magnetic entropy changes using Maxwell thermodynamic relation as follows:

$$\left(\frac{\partial S}{\partial H}\right)_T = \left(\frac{\partial M}{\partial T}\right)_H, \quad (1)$$

that can be rewritten as

$$\Delta S_{\text{mag}} = \int \left(\frac{\partial M}{\partial T}\right)_H dH. \quad (2)$$

The integration in Eq. (2) has been replaced by a numerical integration. Each experimental  $M(H)$  curve was obtained with 2.5 kOe steps and the isothermal curves were separated by at least 2 K around the transition temperature. The magnetic entropy change calculated for the three Co concentrations and the field dependence of the positive  $\Delta S_{\text{mag}}$  for  $x=0.10$  and  $0.20$  are shown in Fig. 3. The same procedure was also applied to determine  $\Delta S_{\text{mag}}$  in the vicinity of the martensitic transition of the  $\text{Ni}_2\text{Mn}_{1-x}\text{Cu}_x\text{Ga}$  system for Cu concentrations  $x=0.15$  and  $0.20$ . The  $\Delta S_{\text{mag}}$  for both samples is considerably higher than that for the Co-doped samples, and particularly with  $x=0.25$ , we obtain a giant magnetocaloric effect ( $\Delta S_{\text{mag}} = -17.2$  J/kg K) at  $T_C = T_M$ , as shown in Fig. 4. For the Cu sample with  $x=0.15$  the magnetic entropy change shows similar behavior as the Co-doped samples, with the martensitic ferromagnetic phase showing an inverse magnetocaloric effect up to  $H_C = 12.5$  kOe. The maximum value of  $\Delta S_{\text{mag}}$  at  $T_M$  is negative and has lower intensity compared to the maximum at  $T_C$ . The results for both samples are summarized in Table I. The low values of  $\Delta S_{\text{mag}}$  at  $T_C$  are in agreement to second-order mag-

TABLE I. The temperatures of the phase transitions and variation of magnetic part of entropy for  $\text{Ni}_2\text{Mn}_{1-x}\text{A}_x\text{Ga}$  ( $A=\text{Co,Cu}$ ) Heusler alloys.  $T_M$  is the martensitic transition temperature.  $\Delta S_{\text{mag}}(T_M)$  is the magnetic entropy change at  $T_M$  for a magnetic-field change of 20 kOe.  $\Delta S_{\text{mag}}^{\text{inv}}(T_M)$  is the maximum inverse magnetocaloric effect at  $T_M$  obtained in a field change from 0 up to  $H_M$ .  $H_M$  is the magnetic field where the inverse magnetocaloric effect start to decrease.  $T_C$  is the magnetic transition temperature and  $\Delta S_{\text{mag}}(T_C)$  is the magnetic entropy change at  $T_C$  for a magnetic-field change of 20 kOe.

Composition ( $x$ )	$T_M$ (K)	$-\Delta S_{\text{mag}}(T_M)$ (J/kg K)	$-\Delta S_{\text{mag}}^{\text{inv}}(T_M, H_M)$ (J/kg K)	$H_M$ (kOe)	$T_C$ (K)	$-\Delta S_{\text{mag}}(T_C)$ (J/kg K)
0.10 of Co	250	-0.77	-1.2	10.0	395	...
0.20 of Co	307	+0.33	-0.31	7.5	390	...
0.30 of Co	362	+0.31	...	...	362	...
0.15 of Cu	290	+1.39	...	...	333	1.79
0.25 of Cu	315	...	...	...	315	17.6

netic phase transitions, while a first-order martensitic transition at  $T_C$  observed for the Cu concentration  $x=0.25$  results in the giant magnetocaloric effect.

In conclusion, we have shown that magnetic entropy change in Ni-Mn-(Co,Cu)-Ga presents interesting details to understand the mechanisms associated with martensitic transition in Heusler alloys. The low-field inverse magnetocaloric effect is associated with the increase of the magnetic crystalline anisotropy in the martensitic phase. The giant magnetocaloric effect observed in the  $x=0.25$  Cu-doped sample indicates a route for studies of Heusler alloys as magnetic refrigerant.

This work is supported by CNPq/CT-Petro, Faperj, Brazil, and MTC-SIUC.

<sup>1</sup>G. V. Brown, J. Appl. Phys. **47**, 3673 (1976).

<sup>2</sup>V. K. Pecharsky, K. A. Gschneidner, Jr., A. O. Pecharsky, and A. M. Tishin, Phys. Rev. B **64**, 144406 (2001).

<sup>3</sup>V. K. Pecharsky and K. A. Gschneidner, Jr., Phys. Rev. Lett. **78**, 4494 (1997).

<sup>4</sup>X. Z. Zhou, W. Li, H. P. Kunkel, and G. Williams, J. Phys.: Condens. Matter **16**, L39 (2004).

<sup>5</sup>R. C. O'Handley, J. Appl. Phys. **83**, 3263 (1998).

<sup>6</sup>M. Khan, I. Dubenko, S. Stadler, and N. Ali, J. Appl. Phys. **97**, 10M304 (2005).