

2009

Antisense Phenotypes Reveal a Functional Expression of OsARF1, an Auxin Response Factor, in Transgenic Rice

Kotb A. Attia

Amr F. Abdelkhalik

Megahed H. Ammar

Chun Wei

Jinshui Yang

See next page for additional authors

Follow this and additional works at: http://opensiuc.lib.siu.edu/psas_articles

Published in *Current Issues in Molecular Biology*, (2009) 11 (Suppl. 1): i29-34

Recommended Citation

Attia, Kotb A., Abdelkhalik, Amr F., Ammar, Megahed H., Wei, Chun, Yang, Jinshui, Lightfoot, David A., El-Sayed, Wagih M. and El-Shemy, Hany A. "Antisense Phenotypes Reveal a Functional Expression of OsARF1, an Auxin Response Factor, in Transgenic Rice." (Jan 2009).

This Article is brought to you for free and open access by the Department of Plant, Soil, and Agricultural Systems at OpenSIUC. It has been accepted for inclusion in Articles by an authorized administrator of OpenSIUC. For more information, please contact opensiuc@lib.siu.edu.

Authors

Kotb A. Attia, Amr F. Abdelkhalik, Megahed H. Ammar, Chun Wei, Jinshui Yang, David A. Lightfoot, Wagih M. El-Sayed, and Hany A. El-Shemy

Antisense Phenotypes Reveal a Functional Expression of *OsARF1*, an Auxin Response Factor, in Transgenic Rice

Kotb A. Attia^{1,2}, Amr F. Abdelkhalik¹, Megahed H. Ammar¹, Chun Wei², Jinshui Yang², David A Lightfoot³, Wagih M. El-Sayed⁴ and Hany A. El-Shemy^{5*}

¹Rice Biotechnology Lab., Rice Research & Training Center, Sakha, Kafr EL-Sheikh, 33717, Egypt

²Institute of Genetic Engineering, School of Life Science, Fudan University, Shanghai, 200433, China

³Plant Biotechnology and Genomics Core-Facility, Department of Plant, Soil, and Agricultural Systems, Southern Illinois University, Carbondale, IL 62901–4415, USA

⁴Department of Genetics, Faculty of Agriculture, Alexandria University, Alexandria, Egypt

⁵Faculty of Agriculture Research Park (FARP) and Biochemistry Department, Faculty of Agriculture, Cairo University, 12613 Giza, Egypt

Received 13 August 2008

Revised 22 September 2008

Accepted 24 October 2008

Abstract

OsARF1 is the first full-length member of auxin response factor (ARF) gene family to be cloned from monocot plant. Using quantitative RT-PCR this study found that, the transcript abundance of *OsARF1* was significantly higher in embryonic tissues than in vegetative tissues. To investigate the effect of *OsARF1* on the phenotype of rice, a cDNA fragment of *OsARF1* was inserted in inverse orientation to the 35S promoter in vector pBin438 to produce an antisense (AS) construction. The AS-*OsARF1* construct was transferred into rice (*Oryza sativa* L. *japonica*) calli via *Agrobacterium tumefaciens*-mediated transformation. Molecular analysis of transgenic plants showed that the functional expression of *OsARF1* was inhibited at mRNA level efficiently. The AS-*OsARF1* plants showed extremely low growth, poor vigor, short curled leaves and tillered but were sterile. Therefore, the *OsARF1* was shown to be essential for growth in vegetative organs and seed development.

Keywords: auxin response factor 1 (ARF1), antisense technology, gene transformation, functional genomics, *Oryza sativa*

Abbreviations: ARF, auxin response factor; RT-PCR, reverse transcriptional polymerase chain reaction;

*For correspondence: helshemy@hotmail.com

AS-DNA/RNA, antisense DNA/RNA; RACE, rapid amplification of cDNA end.

Introduction

Auxin is one of the two most important plant hormones, and regulates various growth and developmental processes by controlling the expression of auxin-response genes (Ulmasov *et al.*, 1995). Auxin responsiveness is conferred to several genes by conserved promoter elements, termed 'auxin-responsive elements' (AuxRE) AuxRE promoter elements are bound by a new class of plant-specific transcription factors, named auxin response factors (ARFs) (Ulmasov *et al.*, 1997a). Because of the extremely low expression of genes encoding ARFs, none were isolated until 1997. The first auxin response factor (ARF1) was isolated from *Arabidopsis* (Ulmasov, *et al.*, 1997a). It was found that all members of the ARF gene family have an amino-terminal DNA-binding domain and most contain a C-terminal region with two conserved domains, which are involved in homo- and hetero-dimerization (Ulmasov *et al.*, 1999). In *Arabidopsis*, it has been reported that the ARF proteins are encoded by a gene family with 23 members and some of them have been shown to repress or to activate expression of reporter genes with an AuxRE promoter element (Ulmasov *et al.*, 1999a; Remington *et al.*, 2004; Okushima *et al.*, 2005). Recently, the first full-length ARF gene of a monocot plant was cloned from rice (Frank *et al.*, 2002). Several rice ARF family transcriptional regulators were also identified homologous to *Arabidopsis* ARF1 (Waller *et al.*, 2002). From genome sequences many ARF genes in *Arabidopsis* and in rice have been isolated (Akila *et al.*, 2004; Wang *et al.*, 2007). Many of the ARF genes mediate up-regulation by auxin but some cause down-regulation by auxin (Ulmasov *et al.*, 1999). Different amino acid biases in mediate regions of ARF genes family were shown to underlie the ability to cause up or down regulation to downstream genes, by fusion protein experiments (Ozga *et al.*, 2002). The protein product of a rice auxin response factor *OsARF1* was shown to be localized in nucleus with the *OsARF1*: GFP fusion protein (Waller *et al.*, 2002).

The data on ARF genes family was accumulating rapidly in last few years, but there are still few reports on their effects on phenotype. Most (13/18) ARF genes when knocked out in *A. thaliana* plants showed no obvious phenotypic change except the previously identified *arf2/hss*, *arf3/ett*, *arf5/mp*, and *arf7/nph4* mutants (Okushima *et al.*, 2005). *arf* mutations can affect gynoecium patterning (ARF3); impaired hypocotyl response to blue light, growth and auxin sensitivity (ARF7); the formation of vascular strands and embryo axis formation (ARF5); suppression of the hookless phenotype and hypocotyl bending (ARF2); hypocotyl

elongation, and auxin homeostasis (ARF8). Some double mutants with a phenotypic single gene knock out family members may show new phenotypes. For example, the *arf7 arf19* double mutant was severely impaired in lateral root formation and showed abnormal gravitropism in both hypocotyls and roots.

To test the functional analysis of a previously cloned gene *OsARF1* we generated transgenic plants expressing an antisense (AS) copy of *OsARF1* cDNA in rice. Using a combination of morphological and molecular analysis, we show that AS-copy of *OsARF1* plants exhibits low growth and sterility.

Materials and methods

Germination assays and tissue culture

Rice callus was induced from the seeds of Zhonghua11 (*Oryza sativa* L. *japonica*) on MS medium that contained MS salts (Sigma, St Louis, MO, USA), 2 mg/l 2,4-D, B5 vitamins and 3% (w/v) sucrose. The primary callus was dissected from the seeds and placed on the same MS medium for 2 weeks. The subcultured callus was separated from the primary callus. After two weeks, one part of subcultured callus was placed on the same MS medium to regenerate the tertiary callus (designated as embryogenic callus) and another part was placed on the MSD medium (containing MS salt, 2 mg/l 6-BA, 0.5 mg/l kinetin, B5 vitamins and 3% sucrose), on which the callus was cultivated until a large number of green dots were growing (designated as differentiating callus). The embryogenic callus and the differentiating callus were collected at the same time for RNA extraction. The sterilized rice seeds germinated and grew to the seedling stage at 25°C under a 16-h light/8-h dark photoperiod. After the 2-leaf stage, the seedlings were transplanted into the field. The leaves and roots at the 4-leaf stage were collected. Additionally, at the reproductive stage, the young panicles that were shorter than 5 mm in length were collected and immediately frozen in liquid nitrogen and stored at -80°C.

RNA extraction and reverse transcription

Total RNA was extracted from different rice tissues by using Trizol reagent (Invitrogen, Karlsruhe, Germany) according to the manufacturer's protocol. Contaminating genomic DNA was removed by treatment with RNase-free DNase I (Sigma) at 37°C for 1 h. Total RNA amount was quantified by UV spectrophotometry at 260 nm. All the RNA samples were adjusted to the same concentration for further use. The cDNA strands were generated by reverse transcribing 5 µg of total RNA (50 µl reaction volume) using AMV reverse transcriptase (Takara Biotechnology, Shiga, Japan) at 42°C for 1 h.

Semi-quantitative RT-PCR

The cDNA samples were diluted to 1/5, 1/20 and 1/100. 1 µl of each dilution and the undiluted sample was used as template for PCR quantification. The actin specific forward primer: 5'-CCATTGGTGCTGAGCGTT-3' and reverse primer: 5'-TAGGAATGGAAGCTGCGGG-3' were used to quantify the amount of amplicon effective cDNA template. PCR was carried out as follows; 95°C for 3 min; followed

by 30 cycles of 94°C for 30 sec; 56°C for 30 sec and 72°C for 30 sec; finally an extension of 10 min. Precisely 5 µl of each amplification was loaded on 1.5% (w/v) agarose gel and the gel was stained by a 10 µg/ml ethidium bromide solution to visualize the bands. The gel was photographed by UV analysis system FR200A (Mikuni, Tokyo, Japan). The relative density of each band was measured by software Smart view™. The cDNA concentrations were normalized based on the concentration of actin. A pair of primers P-5: 5'-CTGCGTGTGGAGTCAGGCG and P-2: 5'-CATTGGTTCAGACTCGACCACAAC that were specific to the DNA binding domain of *OsARF1* was applied for semi-quantitative RT-PCR. Each PCR reaction was performed in a 25 µl aliquot as follows; 95°C for 3 min; followed by 30 cycles at 94°C for 30 sec; 60°C for 30 sec and 72°C for 30 sec; finally with an extension of 10 min. The following steps were the same as for actin quantification.

Construction of antisense OsARF1 transgenic rice

The original partial cDNA, corresponding to the full length coding sequence from 514 bp to 1190 bp, was inversely inserted between *Bam*HI and *Sal*I site of the binary vector pBin438. Expression was driven by Cauliflower mosaic virus (CaMV) 35S promoter and terminated by the *nos* terminator (Fig. 1A). The recombinant plasmid was transformed into rice embryogenic calli through *Agrobacterium*-mediated transformation as previously described (Sunilkumar *et al.*, 1999). Transformed calli were inoculated into selection medium supplemented by kanamycin (100 mg/l) and incubated in the dark at 28 °C for 2 weeks. Resistant-calli were sub-cultured in differentiation medium to regenerate plantlets. Primary transformants were grown in the greenhouse at 30±2 °C during the day (14 h light) and 22±2°C during the night (10 h dark). When the 4th leaf grew, the transformed plantlets were transplanted into the field for phenotypic analysis. The controls were treated under the same conditions.

Northern hybridization analysis

The whole plants at later vegetative stage were collected for RNA extractions. Total RNA (30 µg) of each sample of the transgenic plants and controls were separated by electrophoresis in agarose-formaldehyde gels and transferred to positively charged nylon membranes (Boehringer, Mannheim, Germany). Hybridization was performed with Rapidhyb™ hybridization buffer (Amersham Piscataway, NJ, USA) at 65 °C with a γ - [³²P]-dCTP random-labeled probe corresponding to *OsARF1* cDNA. After washing with 2× SSC, 1× SSC and 0.5× SSC washing solutions (1× SSC is 0.15 M NaCl, 0.015 M sodium citrate) containing 0.2% (w/v) SDS at 63 °C, membranes were autoradiographed for 16–96 h using an intensifying screen (Biomax, Kodak, Rochester, NY).

Microarray analysis

Microarray analysis was carried out by Capital Biochip Corporation with hybridization tuned for gene expression variation (Lan *et al.*, 2004). The RNA samples from 11 independent transgenic plants were quantified and evenly contributed to the RNA population for microarray

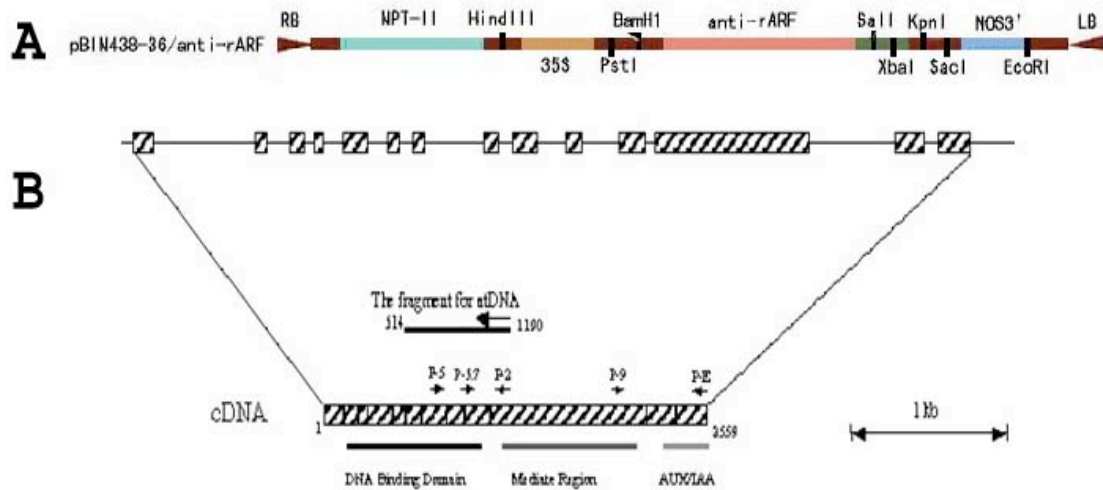


Fig. 1. **A** Construction of binary vector pBin438 harboring the AS-cDNA of *OsARF1* in the antisense orientation driven by 35S promoter and Nos terminator. *Kpn1* was within the selectable marker gene. **B** Structural features of *OsARF1* gene. The exons and introns are represented by boxes and lines, respectively.

analysis. The RNA of untransformed plants was used as the control. Probe hybridization and scanning of the hybridized microarray slide were done according to the method of Lan, (2004). Hybridization was carried out twice and data were analyzed with ArrayGuage™ version 1.21 (Fujifilm, Tokyo, Japan).

Results and discussion

Structural features of *OsARF1* gene

A cDNA of a rice *ARF* orthologue was isolated by subtractive suppressed hybridization (SSH), using a cDNA library of young panicles as tester and that of meristems as driver (data not shown). The 5'-end and 3'- ends were cloned using RACE method (Subudhi and Huang, 1999). By screening a bacterial artificial chromosome (BAC) library of 'IR64 *Indica*' rice variety, a BAC clone containing the genomic DNA region corresponding to the cDNA was identified. The region of approximately 8kb that encompassed the coding region was sequenced by primer walk sequencing. A rice marker RZ797, which mapped on chromosome 11, was within this region locating *OsARF1*. The full-length cDNA of the rice *ARF1* gene was 2,559 bp; consisted of 14 exons; and encoded 852 amino acid polypeptides (Fig. 1B). Similarity searches indicated that the *OsARF1* gene was most closely orthologous to *Arabidopsis ARF1*. Therefore, '*Oryza sativa* auxin response factor 1' (*OsARF1*; GenBank accession number AJ306306) was named according to the standard nomenclature. The deduced amino acid sequence of *OsARF1* had the typical features of transcriptional factor, with a DNA binding domain (AuxRe) close to its N- terminus, and a protein interaction domain (Aux/IAA) at its C- terminus. However, the first 50 amino acid at N-terminus and the mediate region between AuxRe and Aux/IAA showed low identities to any known ARF family gene (Fig. 1B).

Expression pattern of *OsARF1* gene in specific rice tissues

The expression level of *OsARF1* was extremely low so that it was not detected by Northern hybridization; even in young panicle where the gene was originally isolated. Consequently the *OsARF1* transcript abundance patterns were analyzed using semi-quantitative RT-PCR. The 5' primer was designed to a region of *OsARF1* sequence that was not conserved in other ARF or *Aux/IAA* genes. *OsARF1* was transcript accumulated in callus and young panicle at much higher amount than in leaf and root. Compared to that in non-differentiated callus, the transcript abundance in differentiating callus dropped significantly (Fig. 2). The results suggested that *OsARF1* could be associated with embryogenesis, because of the higher transcript abundance in young panicles and calli, which both are embryonic tissues.

AS-*OsARF1* transgenic rice showed inhibited growth

To investigate the effects of the loss of function of the *OsARF1* gene on rice phenotypic characters, the AS-*OsARF1* vector was constructed and transferred to the rice cells using *Agrobacterium*-mediated transformation technique. The transgenic plants were detected by PCR using non-intron sequence specific forward primer P-5.7: 5'-AAATGGCGCTCCCTTAAGGTGAG and the reverse primer P-2: 5'-CATTGGTTC GACTCGACCACAAC. Eleven of 16 regenerated rice plants showed the

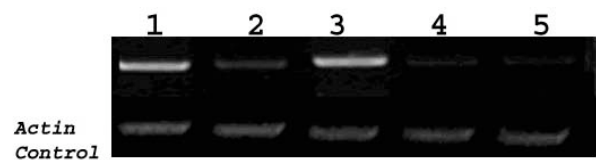


Fig. 2. Transcript abundance of *OsARF1* in wild type rice. Lanes were; 1. embryogenic callus; 2. differentiating callus; 3. young panicles; 4. leaves; 5. roots. Lower lanes: *Actin* mRNAs as a control.

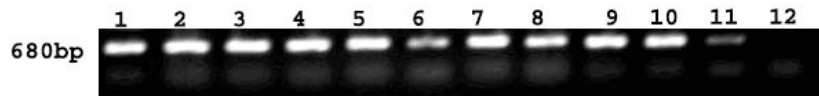


Fig. 3. Detection of *AS-OsARF1* integration by non-intron sequence specific primers. Lane 1–11: *AS-OsARF1* transformed regenerated plants; Lane 12: control plant.

expected amplicons (680bp) while there was no signal in the control, indicating that the *AS-OsARF1* cDNA was successfully integrated into the genome of transgenic plants (Fig. 3). The *AS-OsARF1* transformed plants showed significantly lower growth and vigor that included smaller leaves and shorter heights, compared to non-transformed plants. Interestingly, the length of the tillering node didn't change significantly in transgenic plants (Fig. 4). Also, the leaves curled across the width. Eight of 11 transgenic plants failed to head and the remaining three were sterile, although they were able to develop to the heading stage 13–15 days later than the non-transformed plants. Hence, no F_2 progeny was obtained. In order to investigate the transcript abundance of *AS-OsARF1*, total RNA was isolated from transgenic and control plants and subjected to RNA gel blot analysis. The result showed that there was extremely low level of mRNA in control and transgenic plants (Fig. 5).

Microarray analysis of regulated genes expression in transgenic plants

To test the changes in gene expression caused by *OsARF1* in transgenic plants, microarray analysis was conducted. Genomic transcript abundances pattern in the transgenic plants was checked with a cDNA microarray containing 14,688 genes arrayed in duplicates that were randomly selected from rice ESTs library (<http://microarray.rice.dna.affrc.go.jp>). Microarray analysis of the transgenic plants in later vegetative stages showed that 10,325 genes of

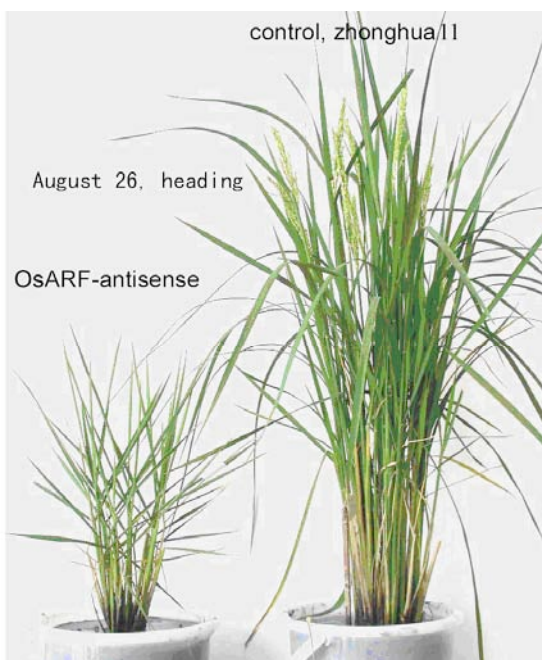


Fig. 4. Comparison of *AS-OsARF1* transgenic rice and a non transgenic control. Left; *AS-OsARF1* transgenic rice. Right; untransformed control.

the total of 14,688 genes were expressed at this stage in transgenic plants (Fig. 6A). The genes whose florescent ratio was <0.5 or >2.0 (transgenic/control) were defined as differently expressed genes. By this criterion, 435 genes were differently expressed, 255 of them were down regulated (Fig. 6B) and 180 were up regulated (Fig. 6C). The annotated genes were located in 9 sub-categories of molecular functions in gene ontology (Table 1). Most of the differently expressed genes were categorized among those encoding proteins with catalytic activity. However, the inference of gene function based on homology and annotation may not reflect the real function, thus the classification of these genes was only a reference.

In this study, “knock down” phenotypic analysis was used. Phenotypes were clear and consistent but unlike those seen from orthologues in *A. thaliana*. Semi-quantitative RT-PCR showed that no transcript of the original *OsARF1* was detected in *AS-OsARF1* transgenic plants, suggesting that the AS-RNA not only inhibited the translation of its target mRNA, but also caused degradation of target mRNA. So, AS-RNA might work in a similar way as RNAi (RNA interference). Recently, it was reported that the expression of *OsARF1* was positively regulated by auxin concentration (Waller *et al.*, 2002). However, the expression level of *ARF1* in *Arabidopsis* was relatively consistent regardless the concentration of auxin (Ulmasov *et al.*, 1997a). That suggested that the *OsARF1* might not be the exact ortholog of *AtARF1* even though these two genes shared the highest degree of similarity between rice and *Arabidopsis* (Frank *et al.*, 2002). Here, *OsARF1* was expressed significantly higher in embryonic tissues (callus and young panicle) than that in non-embryonic tissues (root, leaf and differentiating callus). Therefore the endogenous auxin to cytokinin ratio might be higher in embryonic tissues. In addition, the increasing of the expression of *OsARF1* could be essential to embryogenesis since all the *AS-OsARF1* transgenic plants were sterile. *OsARF1*, as an early response gene in auxin signaling (Waller *et al.*, 2002) might play a key role in fertility and regulate quite a few downstream genes associated with growth and reproduction.

The cDNA microarray provided an efficient high throughput approach to investigate the function of a large numbers of genes and their expression in response to environmental effects (Kawasaki *et al.*, 2001). The results

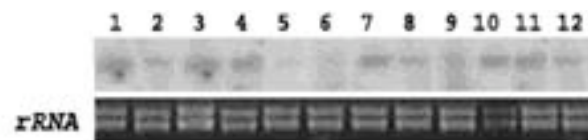


Fig. 5. Abundances of the *AS-OsARF1* mRNA in transgenic rice plants. Upper panel: Lane 1: control; lanes 2–12: 11 transgenic plants. Lower panel: rRNA control.

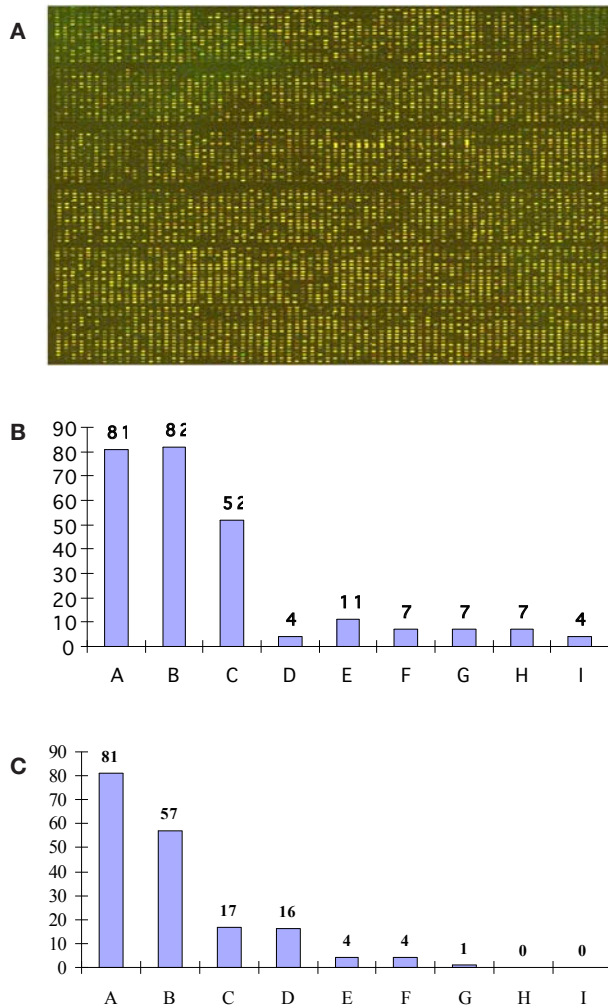


Fig. 6A. Microarray analysis of regulated transcript abundance among transgenic plants. Three-color image of a transgenic plant cDNA array. After scanning for each fluorescent dye separately false colour images were superimposed. Red dots correspond to genes higher expressed down-regulation, green dots to genes that are higher expressed up-regulation, and yellow dots represent genes that show no differential expression. **B** Genes decreased in TA in transgenic rice. Alphabetic letters represent indicators in Table 1. **C** Genes increased in TA in transgenic rice. Alphabetic letters represent indicators in Table 1.

here indicated that approximately 3% of the total set of predicted genes and approximately 4% of known to be expressed genes showed significant differences among their transcriptional abundance between the transgenic plants and the controls. The ratio of differently expressed genes was similar among different tissues. Reproductive stage analyses were not possible because all AS plants failed to reach to productive growth stage. It seems likely the knock down of *OsARF1* turned off some key switches for transformation from vegetative stage to the reproductive stage. Perhaps *OsARF1* itself was the switch. Suppression of *OsARF1* expression also caused dramatically growth at vegetative stages, even though its expression was extremely low at this stage in wild type rice. This demonstrates that, perhaps *OsARF1* is crucial to all growth. In comparison the phenotypic effect of *ARF1* in *Arabidopsis* is unknown (Wang *et al.*, 2007). In contrast, *OsARF1* was shown to be essential for the developmental growth stages of the life cycle of the rice plant. The pathways and functional mechanisms will be studied further.

References

- Akila, O., Danielle, C., Alain, D.M., Yves, D., Jean, B., and Mercè, B. (2004) The T-DNA ORF8 of the cucumopine-type *Agrobacterium rhizogenes* Ri plasmid is involved in auxin response in transgenic tobacco. *Plant Sci.* 166, 557–567.
- Wang, D., Kemei, P., Yaping, F., and Zongxiu, S. (2007) Genome-wide analysis of the auxin response factors (ARF) gene family in rice (*Oryza sativa*) Gene 394, 13–24.
- Frank, W., Masaki, F., and Peter, N. (2002) *OsARF1*, an auxin response factor from rice, is auxin-regulated and classifies as a primary auxin responsive gene. *Plant Mol. Biol.* 50, 415–425.
- Kawasaki, S., Borchert, C., Deyholos, M., Wang, H., Brazilla, S., Kawai, K., Galbraith, D., and Bohnert, H. (2001) Gene expression profile during the initial phase of salt stress in rice. *Plant Cell* 13, 889–905.
- Lan, L., Chen, W., Lai, Y., Suo, J., Kong, Z., Li, C., Lu, Y., and Zhang, Y. (2004) Monitoring of gene expression profiles and isolation of candidate genes involved in

Table 1. Genes with different transcript abundances detected by cDNA microarray.

No.	Differently expressed genes			Total numbers of expressed genes
	Categorization of expressed genes	Down-regulated genes	Up-regulated genes	
A	No significant homology in GenBank	81	81	162
B	Homology to function unknown genes	82	57	139
C	Catalytic activity	52	17	69
D	Structural molecule activity	4	16	20
E	Transporter activity	11	4	15
F	Binding	7	4	11
G	Antioxidant activity	7	1	8
H	Enzyme regulator activity	7	0	7
I	Signal transducer activity	4	0	4
Total		255	180	435

- pollination and fertilization in rice (*Oryza sativa* L.) with a 10K cDNA microarray. *Plant Mol. Biol.* **54**, 471–87.
- Okushima, Y., Overvoorde, P.J., Arima, K., Alonso, J.M., and Chan, A. (2005) Functional Genomic Analysis of the AUXIN RESPONSE FACTOR Gene Family Members in *Arabidopsis thaliana*: Unique and Overlapping Functions of ARF7 and ARF19. *Plant Cell* **17**, 444–63.
- Ozga, J.A., Huizen, R., and Reinecke, D.M. (2002) Hormone and seed-specific regulation of pea fruit growth. *Plant Physiol.* **128**, 1379–89.
- Remington, D.L., Visionm, T.J., Guilfoylem, T.J., and Reed, J.W. (2004) Contrasting models of diversification in the *Aux/IAA* and *ARF* gene families. *Plant Physiol.* **135**, 1738–1752.
- Subudhi, P.K., and Huang, N. (1999) RAPD mapping in a doubled haploid population of rice (*Oryza sativa* L.) *Hereditas* **130**, 41–9.
- Sunilkumar, G., Vijayachandra, K., and Veluthambi, K. (1999) Pre-incubation of cut tobacco leaf explants promotes *Agrobacterium*-mediated transformation by increasing *vir* gene induction. *Plant Sci.* **141**, 51–58.
- Ulmasov, T., Liu, Z.B., Hagen, G., and Guilfoyle, T.J. (1995) Composite structure of auxin response elements. *Plant Cell* **7**, 1611–1623.
- Ulmasov, T., Hagen, G., and Guilfoyle, T.J. (1997a) ARF1, a transcription factor that binds to auxin response elements. *Sci.* **276**, 1865–1868.
- Ulmasov, T., Hagen, G., and Guilfoyle, T.J. (1999) Activation and repression of transcription by auxin-response factors. *PNAS* **96**, 5844 – 5849.
- Ulmasov, T., Hagen, G., and Guilfoyle, T.J. (1999a) Dimerization and DNA binding of auxin response factors. *Plant J.* **19**, 309–319.
- Waller, F., Furuya, M., and Nick, P. (2002) OsARF1, an auxin response factor from rice, is auxin-regulated and classifies as a primary auxin responsive gene. *Plant Mol. Biol.* **50**, 415–25.

Caliciviruses

Molecular and Cellular Virology

Edited by: G.S. Hansman, J. Jiang, K.Y. Green
c. 250 pp., April 2010

ISBN: 978-1-904455-63-9 \$310 / £159

The most important research findings.
Timely and comprehensive reviews.
Discussion of past and current research.

Epstein-Barr Virus

Latency and Transformation

Edited by: Erle S. Robertson
c. 220 pp., April 2010

ISBN: 978-1-904455-62-2 \$310 / £159

Expert virologists comprehensively review this important subject from a genetic, biochemical, immunological, and cell biological perspective. Essential reading.

Anaerobic Parasitic Protozoa

Genomics and Molecular Biology

Edited by: C.G. Clark, P.J. Johnson, R.D. Adam
c. 210 pp., March 2010

ISBN: 978-1-904455-61-5 \$310 / £159

Internationally acclaimed researchers critically review the most important aspects of research on anaerobic parasitic protozoa.

Lentiviruses and Macrophages

Molecular and Cellular Interactions

Edited by: Moira Desport
c. 410 pp., March 2010

ISBN: 978-1-904455-60-8 \$310 / £159

Top lentivirus and macrophage specialists comprehensively review cutting-edge topics in the molecular and cellular biology of the lentivirus-macrophage interaction.

Microbial Population Genetics

Edited by: Jianping Xu
c. 230 pp., March 2010

ISBN: 978-1-904455-59-2 \$310 / £159

Details the major current advances in microbial population genetics and genomics.

Borrelia

Molecular Biology, Host Interaction and Pathogenesis

Edited by: D. Scott Samuels and Justin D. Radolf
c. 630 pp., March 2010

ISBN: 978-1-904455-58-5 \$310 / £159

Written by renowned scientists in the field who have made seminal contributions to the field, this book is a comprehensive guide to the pathogenic *Borrelia*.

Influenza

Molecular Virology

Edited by: Qinghua Wang and Yizhi Jane Tao
c. 200 pp., February 2010

ISBN: 978-1-904455-57-8 \$310 / £159

NS1, hemagglutinin, nucleoprotein, glycoproteins, M2 channel, virulence, polymerase, microarrays, vaccine design.

RNA Interference and Viruses

Current Innovations and Future Trends

Edited by: Miguel Angel Martínez
c. 280 pp., February 2010

ISBN: 978-1-904455-56-1 \$310 / £159

Expert RNAi specialists from around the world have teamed up to produce a timely and thought-provoking review of the area.

Retroviruses

Molecular Biology, Genomics and Pathogenesis

Edited by: Reinhard Kurth and Norbert Bannert
c. 520 pp., January 2010

ISBN: 978-1-904455-55-4 \$310 / £159

Genomics, molecular biology and pathogenesis, comprehensively covering all the recent advances.

Metagenomics

Theory, Methods and Applications

Edited by: Diana Marco
x + 212 pp., January 2010

ISBN: 978-1-904455-54-7 \$310 / £159

Essential reading for all researchers performing metagenomics studies. Highly recommended.

Aspergillus

Molecular Biology and Genomics

Edited by: M. Machida and K. Gomi
x + 238 pp., January 2010

ISBN: 978-1-904455-53-0 \$310 / £159

Systematics, bioinformatics, systems biology, regulation, genetics, genomics, metabolism, ecology, development.

Environmental Molecular Microbiology

Edited by: Wen-Tso Liu and Janet K. Jansson
viii + 232 pp., January 2010

ISBN: 978-1-904455-52-3 \$310 / £159

Current technology and applications. Microbial diversity, phylogeny, communities, 16S rRNA, metagenomics, metaproteomics, microarrays, fingerprinting, soil, water, plants, humans, biofilms.

Neisseria

Molecular Mechanisms of Pathogenesis

Edited by: Caroline Genco and Lee Wetzler
x + 270 pp., January 2010

ISBN: 978-1-904455-51-6 \$310 / £150

Genomics, biofilms, adhesion, invasion, immunity, complement, apoptosis, vaccine, epidemiology, antibiotic resistance.

Frontiers in Dengue Virus Research

Edited by: K.A. Hanley and S.C. Weaver
viii + 304 pp., January 2010

ISBN: 978-1-904455-50-9 \$310 / £150

Evolution, epidemiology, translation, replication, pathogenesis, host, animal models, mosquito interactions, transmission, vaccine, drugs, immunotherapy.

ABC Transporters in Microorganisms

Edited by: Alicia Ponte-Sucre
xii + 260 pp., August 2009

ISBN: 978-1-904455-49-3 \$310 / £150

Pili and Flagella

Current Research and Future Trends

Edited by: Ken Jarrell

x + 238 pp., August 2009

ISBN: 978-1-904455-48-6 \$310 / £150

Lab-on-a-Chip Technology

Edited by: K. E. Herold and A. Rasooly

Vol 1: Fabrication and Microfluidics

ISBN: 978-1-904455-46-2 \$310 / £150

Vol 2: Biomolecular Separation and Analysis

ISBN: 978-1-904455-47-9 \$310 / £150

Bacterial Polysaccharides

Current Research and Future Trends

Edited by: Matthias Ulbrich

xii + 358 pp., June 2009

ISBN: 978-1-904455-45-5 \$310 / £150

Microbial Toxins:

Current Research and Future Trends

Edited by: Thomas Proft

viii + 192 pp., May 2009

ISBN: 978-1-904455-44-8 \$310 / £150

Acanthamoeba:

Biology and Pathogenesis

Author: Naveed Khan

viii + 290 pp., February 2009

ISBN: 978-1-904455-43-1 \$310 / £150

Bacterial Secreted Proteins:

Secretory Mechanisms and Role in Pathogenesis

Edited by: Karl Wooldridge

xii + 512 pp., April 2009

ISBN: 978-1-904455-42-4 \$310 / £150