



**Aalborg Universitet**

**AALBORG UNIVERSITY**  
DENMARK

## **Mechanical Characterisation of PVC Foam Using Digital Image Correlation and Nonlinear Analysis**

Taher, Siavash Talebi; Thomsen, Ole Thybo; Dulieu-Barton, J.M.

*Published in:*

Proceedings of the 18th International Conference on Composite Materials (ICCM-18)

*Publication date:*

2011

*Document Version*

Early version, also known as pre-print

[Link to publication from Aalborg University](#)

*Citation for published version (APA):*

Taher, S. T., Thomsen, O. T., & Dulieu-Barton, J. M. (2011). Mechanical Characterisation of PVC Foam Using Digital Image Correlation and Nonlinear Analysis. In *Proceedings of the 18th International Conference on Composite Materials (ICCM-18)*

### **General rights**

Copyright and moral rights for the publications made accessible in the public portal are retained by the authors and/or other copyright owners and it is a condition of accessing publications that users recognise and abide by the legal requirements associated with these rights.

- ? Users may download and print one copy of any publication from the public portal for the purpose of private study or research.
- ? You may not further distribute the material or use it for any profit-making activity or commercial gain
- ? You may freely distribute the URL identifying the publication in the public portal ?

### **Take down policy**

If you believe that this document breaches copyright please contact us at [vbn@aub.aau.dk](mailto:vbn@aub.aau.dk) providing details, and we will remove access to the work immediately and investigate your claim.

# MECHANICAL CHARACTERIZATION OF PVC FOAM USING DIGITAL IMAGE CORRELATION AND NONLINEAR FE ANALYSIS

S. T. Taher<sup>1\*</sup>, O. T. Thomsen<sup>1</sup>, J. M. Dulieu-Barton<sup>2</sup>

<sup>1</sup> Department of Mechanical and Manufacturing Engineering, Aalborg University, Denmark, <sup>2</sup> School of Engineering Sciences, University of Southampton, UK

\* Corresponding author ([stt@m-tech.aau.dk](mailto:stt@m-tech.aau.dk))

**Keywords:** *PVC foam, Modified Arcan rig, Digital image correlation, Thermal degradation, Finite element analysis*

## 1 General Introduction

Polymer foam cored sandwich structures are often subjected to aggressive service conditions which may include elevated temperatures. The mechanical properties of polymer foam cores degrade significantly with elevated temperatures, and significant changes in the properties may occur well within the operating range of temperatures. The material properties of foam cored sandwich structures depend on the temperature field imposed, and this is usually ignored in engineering analysis and design. As an example, the thermal degradation problem for wind turbine blades is especially associated with the use of polymer foam cores in the wing shells when these are exposed to high temperatures. This occurs most severely under hot climate conditions, but can also occur in temperate climates. An example would be very high gusting winds increasing on a warm/hot summer day, for instance due to the development of a thunder storm.

Furthermore sandwich core materials may experience multidirectional mechanical stress states. In a conventional sandwich panel the in-plane and bending loads are carried by the face sheets, while the core resists the transverse shear loads. A well known failure mode of such sandwich panels is 'core shear failure' in which the core fails due shear stress overloading. However, although the shear stress is often the main core stress, there are conditions in which the normal stresses in the core are of comparable size or even higher than the shear stresses. Such conditions may occur in the vicinity of concentrated loads or supports and also in the vicinity of geometrical and material discontinuities. Under such condition a material element in the core is subjected to a multidirectional state of stress. Therefore, proper design of sandwich structures

requires the characterization of the core material response under multi-directional stress states.

Previously, the Arcan test rig has been used to measure bidirectional properties of polymer foams used for sandwich core materials, especially in the bidirectional tensile-shear stress region [1]. A modified Arcan fixture (MAF) has been developed to characterize polymer foam materials with respect to their tensile, compressive, shear and bidirectional mechanical properties at room and at elevated temperatures, and including the elastic coefficients and the stress-strain response to failure. The MAF enables the realization of pure compression or high compression to shear bidirectional loading conditions that are not possible with conventional Arcan fixtures. The MAF is attached to a standard universal test machine equipped with an environmental chamber using specially designed grips that do not constrain the specimen rotation, and hence reduces paristic effects due to misalignment.

## 2 Characterisation of PVC Divinycell H100

In this paper the focus is to characterize the orthotropic material response of H100 Divinycell cross linked PVC foam at room temperature and to describe the design of the test setup to be used for testing at elevated temperatures. The outcome is a set of validated mechanical properties that will form the basis input into a detailed FE analysis study of the nonlinear thermo-mechanical response of foam cored sandwich structures.

## 3 Modified Arcan Fixture (MAF)

The standard Arcan testing apparatus can be used to apply bidirectional loading to a butterfly shaped (BS) specimen. Fig.1a shows a standard Arcan rig with circular distribution of gripping holes, which is limited to apply only combinations of tensile and

shear loadings. A novel modified Arcan Fixture (MAF) has been designed to enable the application of any combination of axial (tension or compression) and shear loadings (Fig.1b) with a quasi-spiral distribution of gripping holes. The MAF provides an S-shape fixture that consists of two boomerang shaped arms and a two specimen tabs bonded to the test specimen in the centre of the fixture. The new apparatus appear as a simple fixture that may be simply attached to a test machine, capable of only imparting a tension load, to provide biaxial deformation at different shear to axial deformation ratios. The different shear to axial deformation ratios are provided by selecting different attachment points on the boomerang shaped arms. A load applying double sided fork-lug is connected to each boomerang shaped arm at one end, while at the other end each arm is connected to a universal joint to compensate for any misalignment effect from the loading machine as shown in Fig. 1c.

#### **4 Experimental techniques**

The objective of the proposed testing method is to enable determination of the full nonlinear stress-strain response up to failure for a range of temperatures from room temperature up to about 200°C. The experimental procedure herein is carried out for Divinycell H100 PVC foam in room temperature using Digital Image Correlation (DIC) in a configuration with one camera on either side of the specimen. Images including the strain field derived from the DICs are shown in Fig. 2.

#### **5 Elevated Temperature Test Setup**

Extensive experimental core characterisation is being planned at elevated temperatures. The elevated temperature tests will be carried out using an Instron environmental chamber. The specimens will be allowed to equilibrate inside the chamber before testing. The environmental chamber includes a window in the access door, and DIC measurements will be conducted through the window on the front side of specimen. It has been established recently that DIC through the window is indeed feasible [4]. A double 2D DIC setup will be applied for each specimen prior to the elevated temperature testing, and a small mechanical load will be applied to verify the symmetry of the strain response on both sides of the specimen. After this initial mechanical test the back side camera will be removed and the

environmental chamber will be inserted around the MAF rig and the front camera will be used to acquire images through the environmental chamber window.

To acquire accurate load data from the load cell of the test machine, any heat transfer into the load cell should be restricted. To ensure temperate operation of the load cell, an intermediate isolating connection that can operate up to 200°C has been designed and manufactured (see Fig. 4); it includes an air cooled heat exchanger and a heat isolator made of Delrin polymer. The connecting rod, heat exchanger and polymer isolator have standard connection pins that are compatible with the Instron test machine connection.

A finite element analysis (FEA) has been conducted to analyse the heat transfer of isolating connector using the commercial FEA package ANSYS 12.1. The FEA steady state simulation included conduction, radiation and convection over the constituent components. As shown in Fig. 5 the FEA results predict a reduction of temperature from 200°C in the connection rod to 150°C in the Delrin isolator corresponding to the maximum operation temperature for the Delrin polymer material. The final temperature at end of the isolator is predicted to be about 26°C which is sufficiently low for safe and accurate operation of the load cell.

#### **6 Numerical strain field corrections**

3D nonlinear finite FE analyses, including both material and geometric nonlinearity, have been conducted using the FE code ANSYS 12.1 to estimate “correction factors” that are used to compensate for the difference between the measured surface field and the inhomogeneous strain field over the specimen cross section. A bilinear approximation of the experimentally obtained nonlinear shear stress-strain curve has been implemented in the nonlinear FEA model, and an iterative solution procedure is used to “correct” the material model in the FE analyses until convergence of the derived “correction factor” is achieved (usually only requires 3-5 iterations). The “correction factor” is then used to “correct” the stress-strain response measured on the surface gauge line (see Fig. 2) to obtain the average shear strain on the whole gauge section. Fig. 3 shows the shear stress field in a butterfly shaped shear test specimen as predicted by nonlinear FE analysis.

Fig. 6a displays the variation of the calculated strain “correction factor” as a function of the average strain on the gauge cross section. As expected, the strain “correction factor” displays its highest values in the linear (elastic) region of the PVC foam material. However, it decreases with increasing gauge section strains where the specimen gauge section undergoes increasing plastic strains that will smooth the strain distribution, becomes almost uniform before specimen fracture occurs. The “correction factor” appears to increase again just before fracture (see data point to the outermost right in Fig. 6a), but this behaviour is believed to be nonphysical and caused by numerical instability in the nonlinear numerical solution. Original data obtained from shear testing of PVC H100 foam at room temperature and the corrected stress-strain curve are shown in Fig. 6b.

## 7 Results and discussion

A set of representative tensile and shear stress–strain curves measured for PVC H100 foam at room temperature is shown in Fig. 7. After an initially linear region, the curves reveal a substantial non-linear softening response. The in-plane modulus is approximately 48% lower than the through-thickness modulus, and the in-plane strength is about 36% lower than the through-thickness strength). The Young’s moduli are 130 MPa and 67 MPa in the through-thickness and in-plane directions, respectively. Work is presently ongoing to characterize the stress-strain curves for PVC foam core materials at elevated temperatures, and in a further continuation the bidirectional thermal degradation of PVC foams at different temperatures will be also be assessed.

## 8 Ongoing And Future Work

Work is presently ongoing to characterize the stress vs. strain curves for PVC foam core materials loaded in compression and at elevated temperatures for tensile, shear and compressive loads. In a further continuation of the work the bidirectional properties of PVC foams at both room and elevated temperatures will be also be investigated.

## Acknowledgement

The work presented was co-sponsored by the Danish Council for Independent Research | Technology and Production Sciences (FTP), Grant Agreement 274-08-0488, “Thermal Degradation of Polymer Foam

Cored Sandwich Structures”, and the US Navy, Office of Naval Research (ONR), Grant Award N000140710227. The ONR programme manager was Dr. Yapa D. S. Rajapakse. The financial support received is gratefully acknowledged.

## References

- [1] V. S. Deshpande and N. A. Fleck “Multi-Axial Yield Behaviour of Polymer Foams” *Acta Materialia*, Vol. 49, pp. 1859–1866, 2001.
- [2] Gilmer M. Viana and Leif A. Carlsson “Mechanical Properties and Fracture Characterization of Cross-Linked PVC Foams” *Journal of Sandwich Structures and Materials*, Vol. 4, 2002.
- [3] D.C. Loup, R.C. Matteson and A.W.J. Gielen “Material Characterization of PVC Foam under Static and Dynamic Loading” *Advancing with Sandwich Structures and Materials*, pp. 87–96, 2005.
- [4] Zhang S., Dulieu-Barton J.M., Fruehmann R. and Thomsen O.T. “A methodology for obtaining material properties of polymeric foam at elevated temperatures” Submitted to *Experimental Mechanics* 2011.

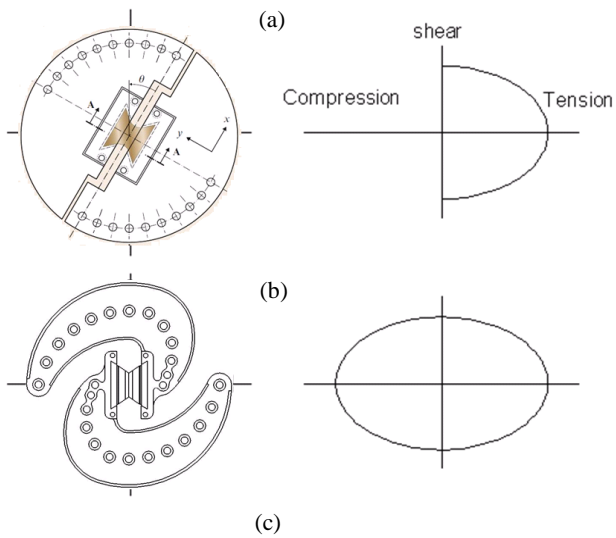


Fig. 1. Bidirectional test rigs: (a) classic Arcan rig with only tension-shear deformation envelope coverage; (b) Modified

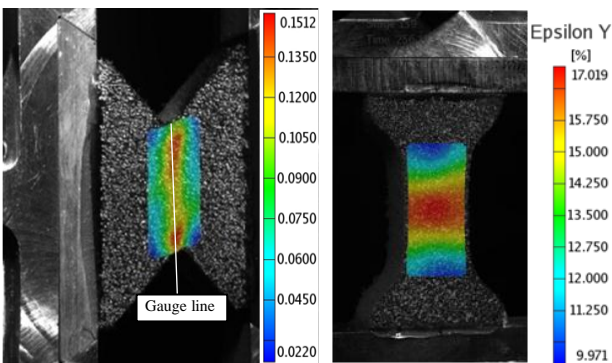


Fig. 2. Strain in shear butterfly shape and strain percentage in tensile short dog bone specimens.

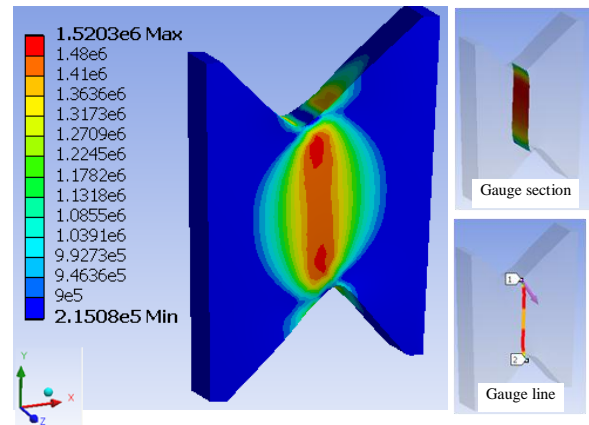


Fig. 3. Shear stress in x-y plane (Pa) using nonlinear FE modelling

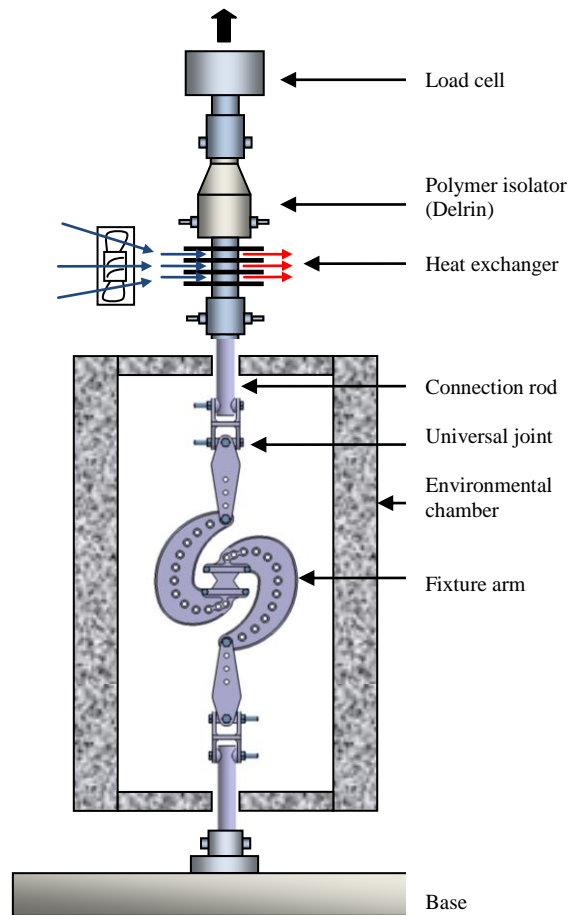


Fig. 4. Test setup for elevated temperatures

MECHANICAL CHARACTERIZATION OF PVC FOAM USING DIGITAL IMAGE CORRELATION AND NONLINEAR FE ANALYSIS

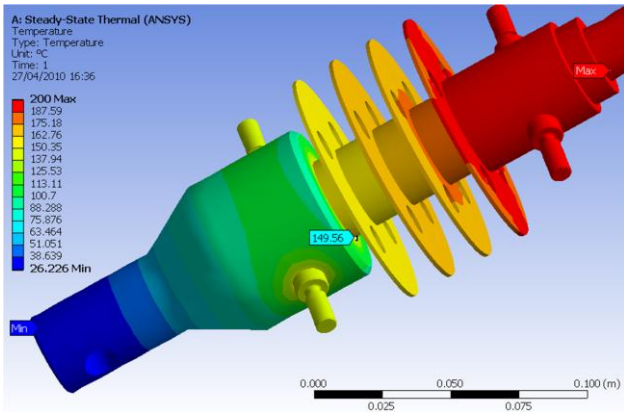


Fig. 5. Temperature contour map over thermal isolator predicted using FEA

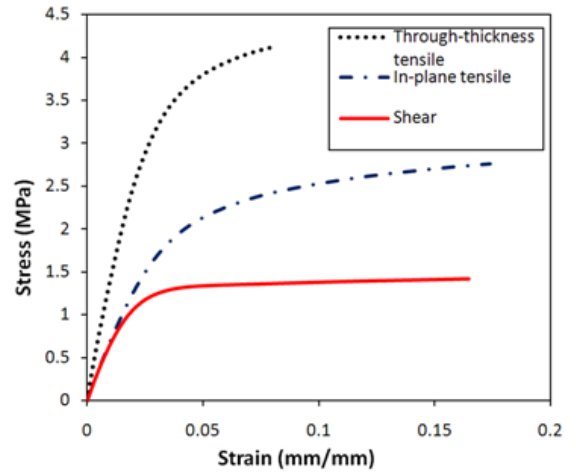


Fig. 7. Shear and tensile stress-strain behaviour of H100 PVC foam after “corrections”

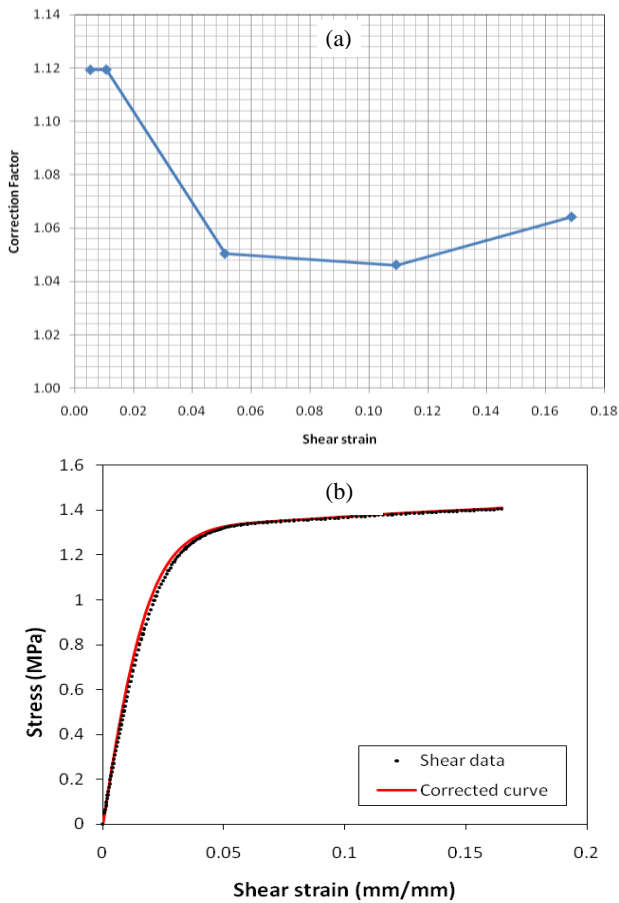


Fig. 6. Nonlinear FEA correction results for shear test: (a) shear strain “correction factor” computed as a function of total shear strain; (b) shear data and corrected shear stress vs. shear strain curve for Divinycell H100 (through-thickness direction)