



Aalborg Universitet

AALBORG UNIVERSITY
DENMARK

Adaptive Human-Aware Robot Navigation in Close Proximity to Humans

Svenstrup, Mikael; Hansen, Søren Tranberg; Andersen, Hans Jørgen; Bak, Thomas

Published in:
International Journal of Advanced Robotic Systems

Publication date:
2011

Document Version
Publisher's PDF, also known as Version of record

[Link to publication from Aalborg University](#)

Citation for published version (APA):
Svenstrup, M., Hansen, S. T., Andersen, H. J., & Bak, T. (2011). Adaptive Human-Aware Robot Navigation in Close Proximity to Humans. *International Journal of Advanced Robotic Systems*, 8(2), 1-15.
http://www.intechopen.com/journals/howtoreference/international_journal_of_advanced_robotic_systems/adaptive_human_aware_robot_navigation_in_close_proximity_to_humans

General rights

Copyright and moral rights for the publications made accessible in the public portal are retained by the authors and/or other copyright owners and it is a condition of accessing publications that users recognise and abide by the legal requirements associated with these rights.

- ? Users may download and print one copy of any publication from the public portal for the purpose of private study or research.
- ? You may not further distribute the material or use it for any profit-making activity or commercial gain
- ? You may freely distribute the URL identifying the publication in the public portal ?

Take down policy

If you believe that this document breaches copyright please contact us at vbn@aub.aau.dk providing details, and we will remove access to the work immediately and investigate your claim.

Adaptive Human-Aware Robot Navigation in Close Proximity to Humans

Mikael Svenstrup¹, Søren Tranberg Hansen², Hans Jørgen Andersen³ and Thomas Bak⁴

^{1,4} Department of Electronic Systems, Aalborg University, Denmark

² Centre for Robot Technology, Danish Technological Institute, Odense, Denmark

³ Department for Media Technology, Aalborg University, Denmark

Abstract For robots to be able coexist with people in future everyday human environments, they must be able to act in a safe, natural and comfortable way. This work addresses the motion of a mobile robot in an environment, where humans potentially want to interact with it. The designed system consists of three main components: a Kalman filter-based algorithm that derives a person's state information (position, velocity and orientation) relative to the robot; another algorithm that uses a Case-Based Reasoning approach to estimate if a person wants to interact with the robot; and, finally, a navigation system that uses a potential field to derive motion that respects the person's social zones and perceived interest in interaction.

The operation of the system is evaluated in a controlled scenario in an open hall environment. It is demonstrated that the robot is able to learn to estimate if a person wishes to interact, and that the system is capable of adapting to changing behaviours of the humans in the environment.

Keywords Human-Robot Interaction, Robot Motion, Intention Estimation

1. Introduction

Mobile robots are moving out into open-ended human environments such as private homes or even public spaces. The success of this shift relies on the robots' abilities to be responsive to, and interact with, people in a

sociable, natural and intuitive manner. Research addressing these issues is labelled Human-Robot Interaction (HRI) (Dautenhahn K. , 2007; Breazeal, 2002; Kanda, 2007). The focus is often on close interaction tasks like gestures, object recognition, manipulation, face expressions or speech (Althaus, Ishiguro, Kanda, Miyashita & Christensen, 2004; Fong, Nourbakhsh & Dautenhahn, 2003; Stiefelwagen, et al., 2007; Gockley, Forlizzi & Simmons, 2006; Kahn, Ishiguro, Friedman & Kanda, 2006). In shared dynamic environments, there is also a need for motion planning and navigation, which is another widely studied research topic. However, rather than just being a question of getting from A to B while avoiding obstacles, navigation algorithms have to adapt to people in the environment. As in Althaus, et al. (2004), HRI and navigation must be addressed simultaneously, to support the idea of shared environments.

An example from everyday human interaction could be a person working with customer service in a shopping centre. This person will detect other people in the environment, actively aiming to provide help. The service person will try to determine their interest or need for help and adjust actions accordingly. The service person will, over time, learn from experience and the degree of success, and thereby determining subsequent behaviour in similar situations. The service person may start approaching, while determining if the person being observed is interested in help. If the person is perceived as being interested in help, the service person will

typically aim to reach a position in front of the person to initiate a closer interaction. If not, the service person will get out of the way and initiate a new interaction process by looking for other people.

This may be a simplified process, but enabling a robot to support such an interaction process is not a simple task. Detection requires that the robot is able to locate people in the environment and discriminate them from obstacles. Observation requires that people can be tracked and requires an interpretation of the interest in interaction. The robot must be able to learn from previous interaction to support this interpretation. Given an interpretation of the interest to interact, the robot must adapt its navigation strategy to either approach the person in a way perceived as comfortable or get out of the way. Finally, some type of closer interaction must be supported.

Detection and tracking of people, that is, estimation of the position and orientation (which combined is denoted as pose) has been discussed in Sisbot, et al. (2006) and Jenkins, Serrano & Loper (2007). Several sensors have been used, including 2D and 3D vision (Dornaika & Raducanu, 2008; Munoz-Salinas, Aguirre, Garcia-Silvente & Gonzalez, 2005), thermal tracking (Cielniak, Treptow & Duckett, 2005) or range scans (Rodgers, Anguelov, Pang & Koller, 2006; Fod, Howard & Mataric, 2002; Kirby, Forlizzi & Simmons, 2007). Laser scans are typically used for person detection, whereas the combination with cameras also produces pose estimates (Feil-Seifer & Mataric, 2005; Michalowski, Sabanovic & Simmons, 2006). Using face detection requires the person to always face the robot, and the person to be close enough to be able to obtain a sufficiently high resolution image of the face (Kleinehagenbrock, Lang, Fritsch, Lomker, Fink & Sagerer, 2002), limiting the use in environments where people are moving and turning frequently. The possibility of using 2D laser range scanners provides extra long range and lower computational complexity. The extra range enables the robot to detect the motion of people further away and thus have enough time to react to people moving at a higher speed.

Interpreting another person's interest in engaging in interaction is an important component of the human cognitive system and social intelligence, but it is such a complex sensory task that even humans sometimes have difficulties with it. Research that addresses the ability to recognise human social signals and behaviour is called Social Signal Processing (SSP) (Vinciarelli, Pantic & Bourlard, 2009; Vinciarelli, Pantic, Bourlard & Pentland, 2008; Zeng, Pantic, Roisman & Huang, 2008). In the example scenario, with the person from the customer service, learning was used as a way to build on previous experiences to form an interpretation of interest for a

given person. Researchers have investigated Case-Based Reasoning (CBR) (Kolodner, 1993; Ram, Arkin, Moorman & Clark, 1997). CBR allows recalling and interpreting past experiences, as well as generating new cases to represent knowledge from new experiences. To our knowledge, CBR has not yet been used elsewhere in an HRI context but has proven successful in solving spatial-temporal problems in robotics (Likhachev & Arkin, 2001; Ram, Arkin, Moorman & Clark, 1997; Jurisica & Glasgow, 1995). An advantage of using CBR is the simple implementation and the simple parameter tuning. Other methods, like Hidden Markov Models, have (Kelley, Tavakkoli, King, Nicolescu, Nicolescu & Bebis, 2008) been used to learn to identify the behaviour of humans (Kelley, Tavakkoli, King, Nicolescu, Nicolescu & Bebis, 2008). Bayesian inference algorithms and Hidden Markov Models have also successfully been applied to modelling and for predicting spatial user information (Govea, 2007). To approach a person in a way that is perceived as natural and comfortable requires *human-aware navigation*. Human-aware navigation respects the person's social spaces is discussed in (Walters M. L., et al., 2005; Dautenhahn, et al., 2006; Takayama & Pantofaru, 2009). Several authors have investigated the interest of people to interact with robots that exhibit different expressions or follow different spatial behaviour schemes (Bruce, Nourbakhsh & Simmons, 2001; Christensen & Pacchierotti, 2005; Dautenhahn, et al., 2006; Hanajima, Ohta, Hikita & Yamashita, 2005). In Michalowski, Sabanovic & Simmons (2006) models are reviewed that describe social engagement based on the spatial relationships between a robot and a person, with emphasis on the movement of the person. Although the robot is not perceived as a human when encountering people, the hypothesis is that robot behavioural reactions with respect to motion should resemble human-human scenarios. This is supported by Dautenhahn, et al. (2006); Walters M. L., et al. (2005). Hall has investigated the spatial relationship between humans (proxemics) as outlined in Hall (1963; 1966), which can be used for Human-Robot encounters. This was also studied by Walters M. L., et al. (2005), whose research supports the use of Hall's proxemics in relation to robotics.

In this paper the focus is on detection, observation, navigation, and learning to determine the person interest in close interaction, which means that psychological studies of the naturalness and comfortable manner of the motion is out of the scope of this work. A simplified close interaction has also been implemented to complete the interaction process. We present a novel method for inferring a human's motion state (position, orientation and velocity) from 2D laser range measurements. The method relies on a fast algorithm for detecting the legs of people (Feil-Seifer & Mataric, 2005; Xavier, Pacheco, Castro, Ruano & Nunes, 2005), and fuses this with

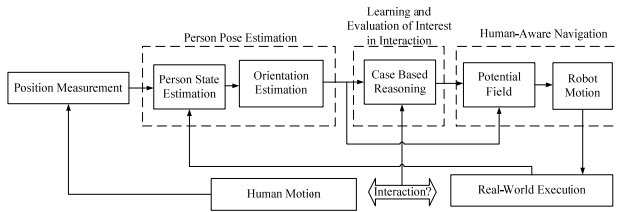


Figure 1. An overview of how the different components are connected in the current system.

odometry data in a Kalman filter to obtain the motion state. Observation and learning is based on a CBR algorithm. Based on observed SSP signals, the CBR algorithm estimates a person's interest in interaction. In the given implementation, only the observed motion patterns are used as SSP information. For navigation, an adaptive human-aware navigation algorithm using a potential field, based on results from Fajen & Warren (2003); Sisbot, et al. (2005); Sisbot, Clodic, Urias, Fontmartry, Brèthes & Alami (2006), is presented. The shape of the potential field is derived from the human-human spatial relations described by Hall (1963).

The algorithms have been implemented and demonstrated to work together in an open environment at the university.

2. Methodology

The robotic system is designed for a specific set-up, where a person encounters a robot in an open space and starts an interaction process as described above. We define the part of the interaction process starting from when the person is detected, until close interaction is initiated, as a *session*. In each session the person might, or might not, wish to engage in close interaction with the robot. The session is defined to last as long as the robot and person mutually adapt their motion according to each other, and is considered over when the person has either disappeared from the robot's field of view, or has initiated close interaction. Close interaction is, in this set-up, initiated by pressing a simple button on the robot. In this case the person is perceived by the robot to be interested in close interaction. Since SSP is difficult (Vinciarelli, Pantic, Bourlard & Pentland, Social signal processing: state-of-the-art and future perspectives of an emerging domain, 2008) and interest cannot be directly measured as an absolute value, we refer to interest only as it is perceived by the robot and not as the true internal state of the person. When the person has disappeared without pressing the button, they are considered to not be interested in further interaction. When a session is over, the system proceeds to detecting new persons, and no further close interaction is considered.

The structure of the proposed system set-up is outlined in Figure 1. First, the pose of the person is estimated using a Kalman filter and an autoregressive filter. This

information is sent to a person evaluation algorithm, which provides information to the navigation subsystem. The loop is closed by the robot, which executes the path in the real world and thus has an effect on how humans move in the environment.

2.1 Person Pose Estimation

First, the pose and velocity of the people in the robot's vicinity is determined. The method is derived for only one person, but the same method can be utilised when several people are present.

We define the pose of a person as the position of the person given in the robot's coordinate system, and the angle towards the robot, as seen from the person (p_{pers} and θ in

Figure 2). The orientation θ is approximately the angle between ϕ (the angle of the distance vector from the robot to the person) and v_{pers} (the angle of the person's velocity vector). It is, however, only an approximation, since the orientation is not necessarily equal to the direction of the motion.

The estimation of the person's pose can be broken down into three steps:

1. Measure the position of the person;
2. Use the continuous position measurements to find the state (position and velocity) of the person;
3. Use the velocity estimate to find the orientation (θ) of the person.

2.1.1 Position Measurements

The position measurements could, in principle, be done by any instrument, for example, external or on-board devices such as cameras, laser scanners or heat sensors. In

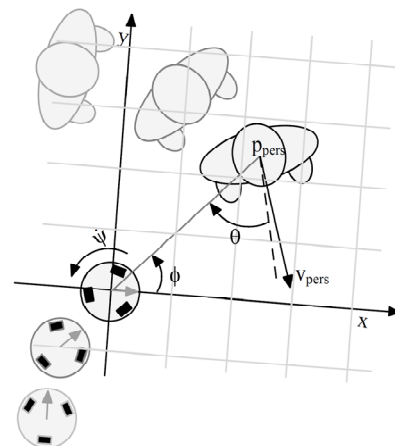


Figure 2. The state variables p_{pers} and v_{pers} hold the position and velocity of the person in the robot's coordinate frame. θ is the orientation of the person and ψ is the rotational velocity of the robot.

our case we use an on-board laser range finder to find the position of the person, which has the advantage that it supports autonomy with no external sensors. Furthermore, processing a laser scan is computationally very efficient, compared to image processing from on-board cameras. The laser scans the area just below knee height, and a typical output from the laser range scanner is seen in **Figure 3**. An algorithm detects legs in the output data, fuses them with previous scans, pairs them and outputs estimates of where the person is. The algorithm is described in Feil-Seifer & Mataric (2005); Xavier, Pacheco, Castro, Ruano & Nunes (2005), and the output is the position of the person in the robot's coordinate frame. Our implementation has been proved robust for tracking people at speeds of up to $2^m/s$ in a real-world public space, which is described in Svenstrup, Bak, Maler, Andersen & Jensen (2008).

2.1.2 Person State Estimation

The next step is to estimate velocity vector of the person in the robot's coordinate frame. The velocity of the person cannot be calculated directly from the person position measurements since there will be an offset corresponding to the movement of the robot itself. If, for example, the person is standing still and the robot is moving, then different position measurements will be obtained, but the velocity estimate should still be zero. Therefore, the position measurements from the laser range finder algorithm and robot odometry measurements are combined to obtain a state estimate. The fusion of these measurements is done in a Kalman filter, where a standard discrete state space model formulation for the system is used:

$$\begin{aligned} \mathbf{x}(k+1) &= \Phi \mathbf{x}(k) + \Gamma \mathbf{u}(k) \\ \mathbf{y}(k) &= H \mathbf{x}(k) \end{aligned} \quad (1)$$

where \mathbf{x} is the state, \mathbf{y} is the measurements, \mathbf{u} is the input and Φ, Γ, H are the system matrices explained below.

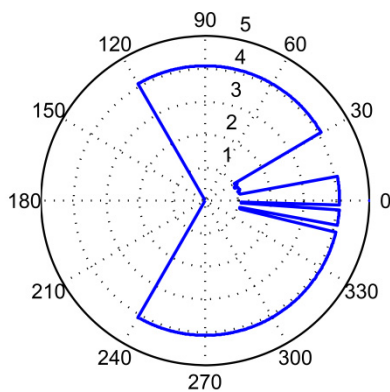


Figure 3. An image of the ranges from one laser rangefinder scan. The distance scale on the polar plot is in metres and the angle is in degrees.

The state is comprised of the person's position, person's velocity and the robot's velocity. The measurements are the estimate of the person's position and the odometry measurements.

$$\mathbf{x} = \begin{bmatrix} \mathbf{p}_{pers} \\ \mathbf{v}_{pers} \\ \mathbf{v}_{rob} \end{bmatrix}, \quad \mathbf{y} = \begin{bmatrix} \hat{\mathbf{p}}_{pers} \\ \mathbf{v}_{odom, rob} \end{bmatrix} \quad (2)$$

\mathbf{p} denotes a position vector and \mathbf{v} denotes velocities, all given in the robot's coordinate frame. The $\hat{\mathbf{p}}$ is the estimate of the person's position from the person detection algorithm and $\mathbf{v}_{odom, rob}$ the robot's odometry measurement vector.

The position of the person in the robot's coordinate frame (\mathbf{p}_{pers}), at time $k+1$, depends both on the person's velocity, the robot's velocity and the rotation of the robot, which need to be included in the process model. However, the robot's rotation causes the vector \mathbf{p}_{pers} to rotate, and does therefore introduce a nonlinear effect on the state. This nonlinear effect can be overcome while still maintaining the linear Kalman filter, by introducing a measurement-driven Kalman filter (Jun, Roumeliotis & Sukhatme, 1999; Merwe, Julier, Bogdanov, Harvey & Hunt, 2004). The idea in a measurement-driven Kalman filter is to use sensor readings, in this case rotational odometry data from the robot, to drive the process model as an input. This means that the non-linearity is in the input part $\Gamma \mathbf{u}(k)$, and the rotation can be omitted in the state transition matrix Φ . The advantage is that the input is not a part of the Kalman filter equations, and the filter remains a linear filter. Omitting rotation, $\Phi \mathbf{x}(k+1)$ from Eq. (1) can be written as:

$$\begin{aligned} & \begin{bmatrix} \mathbf{p}_{pers}(k+1) \\ \mathbf{v}_{pers}(k+1) \\ \mathbf{v}_{rob}(k+1) \end{bmatrix} \\ &= \begin{bmatrix} \mathbf{p}_{pers}(k) + T(\mathbf{v}_{pers}(k) - \mathbf{v}_{rob}(k)) \\ \mathbf{v}_{pers}(k) \\ \mathbf{v}_{rob}(k) \end{bmatrix} \end{aligned} \quad (3)$$

where T is the sampling time. The output matrix H from Eq. (1) follows directly from the measurement vector in Eq. (2), and thus Φ and H are given as:

$$\Phi = \begin{bmatrix} \mathbf{I} & T\mathbf{I} & -T\mathbf{I} \\ \mathbf{0} & \mathbf{I} & \mathbf{0} \\ \mathbf{0} & \mathbf{0} & \mathbf{I} \end{bmatrix}, \quad H = \begin{bmatrix} \mathbf{I} & \mathbf{0} & \mathbf{0} \\ \mathbf{0} & \mathbf{0} & \mathbf{I} \end{bmatrix}, \quad (4)$$

where \mathbf{I} is the 2×2 identity matrix, and $\mathbf{0}$ is the 2×2 zero matrix.

The error in the linear process model, which is introduced by the rotational velocity, is compensated for by adding it to the input $\Gamma \mathbf{u}(k)$. Looking at

Figure 2, it can be seen that the angle of the vector towards the person (\mathbf{p}_{pers}) is rotated by ψT for each time step,

which is also the case for the person's velocity vector (\mathbf{v}_{pers}). The effect is derived for a state vector \mathbf{p} , but applies to both \mathbf{p}_{pers} and \mathbf{v}_{pers} . To account for the non-linearity, the input needs to compensate for the error obtained by the linear model, i.e. the difference between the rotated state vector and the vector calculated by the linear model in (3):

$$\Gamma \mathbf{u}(k) = \mathbf{p}_{rotated} - \mathbf{p}_{linear} , \quad (5)$$

where $\mathbf{p}_{rotated}$ is the correct state estimate taking into account the rotation, and \mathbf{p}_{linear} is the linear state estimate. $\mathbf{p}_{rotated}$ can be calculated by rotating the linear state by the angle ψT :

$$\begin{aligned} \mathbf{p}_{rotated} \\ = \begin{bmatrix} \cos(\psi T) & \sin(\psi T) \\ -\sin(\psi T) & \cos(\psi T) \end{bmatrix} \mathbf{p}_{linear} \end{aligned} \quad (6)$$

If the sample time is small compared to the rotational velocity, then a small angle approximation of the equations can be used. This means that $\cos(\psi T) \approx 1$ and $\sin(\psi T) \approx \psi T$, and Eq. (5) can be rewritten as:

$$\begin{aligned} \Gamma \mathbf{u}(k) &\approx \begin{bmatrix} 1 & \psi T \\ -\psi T & 1 \end{bmatrix} \mathbf{p}_{linear} - \mathbf{p}_{linear} \\ &= \begin{bmatrix} p_y \\ -p_x \end{bmatrix} \psi T , \end{aligned} \quad (7)$$

where p_x and p_y are the x and y coordinates of the vector \mathbf{p} . Using this result to write out the full input part of the model in Eq. (1) gives:

$$\Gamma(k) \mathbf{u}(k) = \begin{bmatrix} p_{y,pers}(k) \\ -p_{x,pers}(k) \\ v_{y,pers}(k) \\ v_{x,pers}(k) \\ 0 \\ 0 \end{bmatrix} T \hat{\psi}(k) , \quad (8)$$

where $\hat{\psi}$ is the measured robot rotation from the odometry data.

If $\Phi(k)$ is not constant, the Kalman gain does not converge to a steady state value. Small deviations of $\Phi(k)$ will not be a practical problem, but some infrequent long sampling intervals have been observed. In the practical implementation $\Phi(k)$ and corresponding Kalman, gain is therefore calculated online.

2.1.3 Orientation Estimation

The direction of the velocity vector found above is not necessarily equal to the orientation of the person.

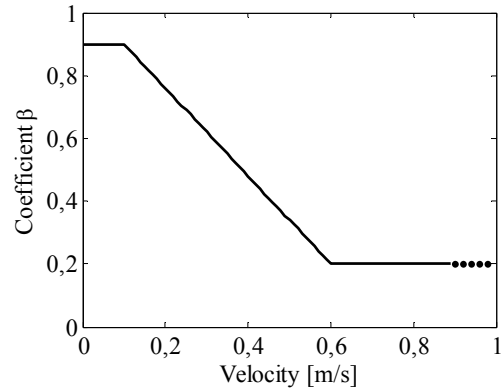


Figure 4. The adaptive coefficient β in the first order autoregressive filter used in the orientation estimation. The faster the person moves relative to the robot, the lower β is and the more the filter relies on the measurements.

Consider, for example, a situation where the person is standing almost still in front of the robot, but is moving slightly backwards. This means that the velocity vector is pointing away from the robot, although the person is facing the robot. To obtain a correct orientation estimate the velocity estimate is filtered through a first order autoregressive filter, with adaptive coefficients relative to the velocity. When the person is moving quickly, the direction of the velocity vector has a large weight, but if the person is moving slowly, the old orientation estimate is given a larger weight. The autoregressive filter is implemented as:

$$\begin{aligned} \theta(k+1) \\ = \beta \theta(k) + (1 - \beta) \arctan\left(\frac{v_{y,pers}}{v_{x,pers}}\right) , \end{aligned} \quad (9)$$

where β has been chosen experimentally relative to the absolute velocity v as:

$$\beta = \begin{cases} 0.9 & \text{if } v < 0.1 \text{ m/s} \\ 1.04 - 1.4v & \text{if } 0.1 \text{ m/s} \leq v \leq 0.6 \text{ m/s} \\ 0.2 & \text{else} \end{cases} . \quad (10)$$

In **Figure 4** the parameter is plotted versus the velocity.

2.2 Learning and Evaluation of Interest in Interaction

To represent the person's interest in interaction, a continuous fuzzy variable, Person Indication (PI), is introduced, which serves as an indication of whether or not the person is interested in interaction. PI belongs to the interval $[0,1]$, where $PI=1$ represents the case where the robot believes that the person wishes to interact, and $PI=0$ the case where the person is not interested.

To determine the value of PI , an adaptive person evaluator, based on a CBR system, is designed. The method for estimating the PI of a person is to observe the behaviour of

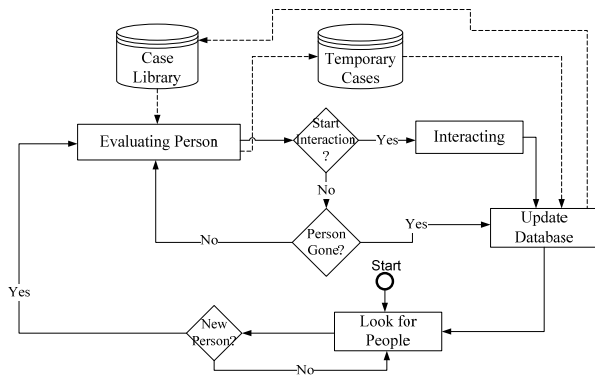


Figure 5. Operation of the CBR system. First the robot starts to look for people. When a person is found, it evaluates whether the person wants to interact. After a potential interaction, the robot updates the knowledge library with information about the interaction session, and starts to look for other people.

the person continuously, find out if something similar has happened in previous sessions, and set PI according to what has happened in previous sessions. The implementation of the CBR system is basically a database system which holds a number of cases describing each session. There are two distinct stages of the CBR system operation. The first is the evaluation of the PI , where the robot estimates the PI during a session using the experience stored in the database. The second stage is the learning stage, where the information from a new experience is used to update the database. The two stages can be seen in Figure 5, which shows a state diagram of the operation of the CBR system. Two different databases are used. The *Case Library* is the main database which represents all the knowledge the robot has learned so far, and is used to evaluate PI during a session. All information obtained during a session is saved in the *Temporary Cases* database. After a session is over, the information from the Temporary Cases is used to update the knowledge in the Case Library.

2.2.1 Database Format

Specifying a case is a question of determining a distinct and representative set of features connected to the event of a human-robot interaction session. The set of features could be anything identifying the specific situation, such as, the person's velocity and direction, position, relative position and velocity to other people, gestures, time of day, day of the week, location, height of the person, colour of their clothes, their facial expression, their apparent age and gender etc. The selected features depend on available sensors. For the experimental system considered in this paper, we consider only the motion behaviour of the person, and thus the following fields corresponding to each case will be used in the CBR database:

- CaseID, is a reference number for each case
- (p_x, p_y) , is the estimated position of the robot
- (v_x, v_y) , is the estimated velocity of the robot
- θ , is the estimated orientation of the person

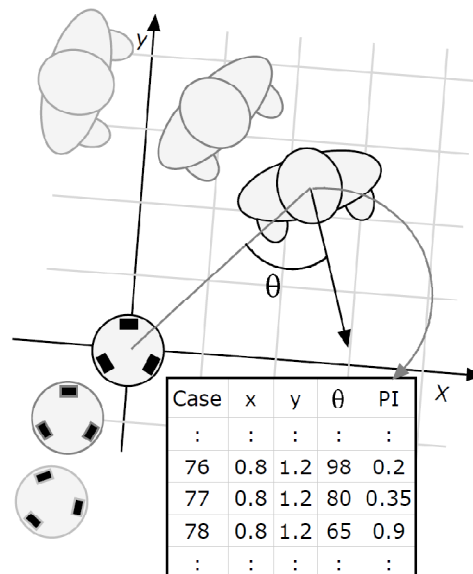


Figure 6. Input variables and the corresponding output PI stored in the CBR database.

- PI , is the corresponding Person Indication output value. To be able to compare cases to see if any are identical, each value is rounded to an implementation specific resolution. The database parameters are illustrated in Figure 6.

2.2.2 Evaluation of Person Interest

Initially, when the robot locates a new person in the area, nothing is known about this person, so PI is assigned to the default value $PI=0.5$. After this, the PI of a person is continuously evaluated using the Case Library. First a new case is generated by collecting the relevant set of features described in Section 0. The case is then compared to existing cases in the Case Library to find matching cases. When searching for matching cases in the Case Library, a similarity function must be used to define when two cases are similar enough to be interpreted as a match, since in physical system, measurements will seldom be completely identical. This means that if, for example, the distance estimates are within 10cm, the similarity function can define the cases as matching. In our system, two cases are defined as matching given that the position and orientation difference are both within a specified range limit. If a match is found in the Case Library, the PI is updated towards the value found in the library according to the formula

$$PI_{new} = 0.2PI_{library} + 0.8PI_{old}, \quad (11)$$

where PI_{new} is the new updated value of PI . This update is done to continuously adapt PI according to the observations, but still not trusting one single observation completely. If the robot continuously observes similar $PI_{library}$ values, the belief of the value of PI , will converge

towards that value, e.g., if the robot is experiencing a behaviour, which earlier has resulted in interaction, lookups in the Case Library will result in $PI_{library}$ values close to 1. This means that the current PI will quickly approach 1 as well. After this, the case is copied to Temporary Cases, which holds information about the current session. If no match is found in the Case Library, the PI value is updated with $PI_{library} = 0.5$, which indicates that the robot is unsure about the intentions of the person. The case is still inserted into the Temporary Cases.

2.2.3 Updating the Database

If the session resulted in close interaction, the robot assumes that the person was actually interested in the close interaction, and assumes the opposite if no close interaction occurred. This information, together with the Temporary Cases is used to revise the Case Library. The Case Library is updated according to Algorithm 1.

Algorithm 1 Updating the *Case Library* from the *Temporary Cases*

UpdateDatabase()

```

1: for all TemporaryCases do
2:   match = FindMatchingCase()
3:   if match == NULL then
4:     match = CreateNewCase()
5:     SetPI(0.5)
6:   end if
7:   if Interested then
8:     PI(match) = PI(match) + wL
9:     if PI(match) > 1 then
10:      PI(match) = 1
11:    end if
12:   else
13:     PI(match) = PI(match) - wL
14:     if PI(match) < 0 then
15:      PI(match) = 0
16:    end if
17:   end if
18: end for

```

For each of the cases in the Temporary Cases the matching case in the Case Library is found. If there is no matching case in the Case Library, a new one is created with default $PI=0.5$ value. Then the associated PI is

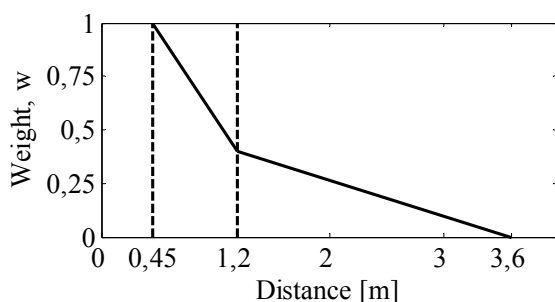


Figure 7. The weight w as a function of the distance between the robot and the test person. w is a weight used for updating the level of interest PI .

updated by a value of wL , where w is a weight related to the distance to the person, and L is a learning rate. Events which happen at close distances will often have more relevance and be easier to interpret than those at longer distances. Therefore, an observed case should have a larger impact the closer the person is, which is taken care of by w . The weight is implemented utilising the behavioural zones as designated by Hall (1966) and the weight as a function of the distance is shown in Eq. (12) and illustrated in Figure 7.

$$w = \begin{cases} 1 & \text{if } d < 0.45m \\ 1.36 - 0.8d & \text{if } 0.45m \leq d \leq 1.2m \\ 0.6 - \frac{1}{6}d & \text{else} \end{cases} \quad (12)$$

The learning rate L controls the temporal update of PI . It is an adjustable parameter, which determines how fast the system is adapting to new environments. In a conservative system L is low, so new observations will only affect PI to a limited degree. In an aggressive set-up L is large and, consequently, PI will adapt faster. After the main Case Library has been updated, the robot is ready to start over and look for new people for potential interaction.

2.3 Human-Aware Navigation

As written in the introduction, the human-aware navigation is inspired by the spatial relation between humans described by Hall (1963). Hall divides the area around a person into four zones according to the distance to the person:

- the public zone, where $d > 3.6m$
- the social zone, where $d > 1.2m$
- the personal zone, where, $d > 0.45m$
- the intimate zone, where $d < 0.45m$

If it is most likely that the person does not wish to interact (i.e. $PI \approx 0$), the robot should not violate the person's personal space, but move towards the social or public zone. On the other hand, if it is most likely that the person is willing to interact, or is interested in close interaction with the robot (i.e. $PI \approx 1$), the robot should try to enter the personal zone in front of the person. Another navigation issue is that the robot should be visible to the person, since it is uncomfortable for a person if the robot moves around, where it cannot be seen.

To allow human-aware navigation, a person-centred potential field is introduced. The potential field has high values where the robot is not allowed to go, and low values where the robot should be, or should try to move towards.

All navigation is done relative to the person(s), and hence no global positioning is needed in the proposed model.

The method is inspired by Sisbot, Clodic, Urias, Fontmarty, Br ethes & Alami (2006) and further described in Andersen, Bak & Svenstrup (2008). The potential field landscape is derived as a sum of several different potential functions with different purpose. The different functions are:

- **Attractor.** This is a negative potential used to attract the robot towards the person;
- **Rear.** This function ensures that the robot does not approach a person from behind;
- **Parallel.** This is an adaptive function, which is used to control the direction to the person and to keep a certain distance;
- **Perpendicular.** This function is also adaptive and works in cooperation with the parallel potential function.

All four potential functions are implemented as normalised bi-variate Gaussian distributions. A Gaussian distribution is chosen for several purposes. It is smooth and easy to differentiate to find the gradient, which becomes smaller and smaller (i.e. has less effect) further away from the person. Furthermore, it does not grow towards ∞ around 0 as, for example, a hyperbola (e.g. $\frac{1}{x}$), which makes it both computational feasible and intuitively perceivable.

The shapes of the variances of the four Gaussian distributions are illustrated in Figure 8, and the combined potential field is:

$$f(\mathbf{x}) = \sum_{k=1}^4 c_k \exp\left(-\frac{1}{2}[\mathbf{x} - \mathbf{0}]^T \Sigma_k^{-1} [\mathbf{x} - \mathbf{0}]\right) \quad (13)$$

where $k = 1 \dots 4$ is the different potential functions, c_k is a normalising constant and \mathbf{x} is the position relative to the person, where the potential function is evaluated. $\Sigma_k = \begin{bmatrix} \sigma_x^2 & \sigma_{xy} \\ \sigma_{xy} & \sigma_y^2 \end{bmatrix}$ is the 2x2 covariance matrix of the distribution, which determines the shape and rotation. A way to obtain a rotated distribution while maintaining the width, is to take a standard non-rotated distribution, and rotate the covariance matrix, such that

$$\Sigma_k = \mathcal{R}^T \begin{bmatrix} \sigma_{x,std}^2 & 0 \\ 0 & \sigma_{y,std}^2 \end{bmatrix} \mathcal{R}.$$

The attractor and rear distribution are both kept constant for all instances of PI . The parallel and perpendicular distributions are continuously adapted according to the PI value and Hall's proximity distances during an interaction session. Furthermore, the preferred robot-to-person encounter direction, reported in Dautenhahn, et al. (2006); Woods, Walters, Koay & Dautenhahn (2006), is taken into account by changing the width by rotation of

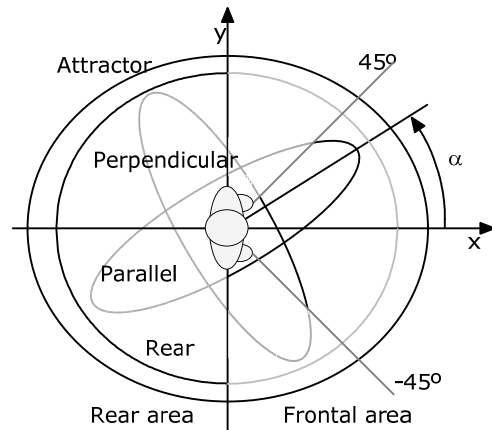


Figure 8. The four Gaussian distributions used for the potential field around the person. The rear area is to the left of the y axis. The frontal area (to the right of y axis) is divided into two: one in the interval from $[-45^\circ; 45^\circ]$, and the other in the area outside this interval. The parallel and perpendicular distributions are rotated by the angle α .

the distributions. The width of the parallel and perpendicular distributions is adjusted by the value of the variances $\sigma_{x,std}^2$ and $\sigma_{y,std}^2$. The rotation α may be adapted by adjustment of the rotation matrix \mathcal{R} . For the parallel distribution $\sigma_{x,std}^2 = 1$, and for the perpendicular distribution $\sigma_{y,std}^2 = 1$. The mapping from PI to the respective other value of $\sigma_{x,std}^2$ or $\sigma_{y,std}^2$ is illustrated in Figure 9, together with the rotation angle α . The variance cannot be zero, which is why the lowest value is 0.05.

The adaptation of the potential field distributions enables the robot to continuously adapt its behaviour to the current interest in interaction of the person in question.

The resulting potential field contour can be seen in Figure 11 for three specific values of PI . With $PI=0$ the potential field will look like Figure 11a where the robot will move to the dark blue area, i.e. the lowest potential approximately 3.6m in front of the person. The other end of the scale for $PI=1$ is illustrated in Figure 11c, where the person is

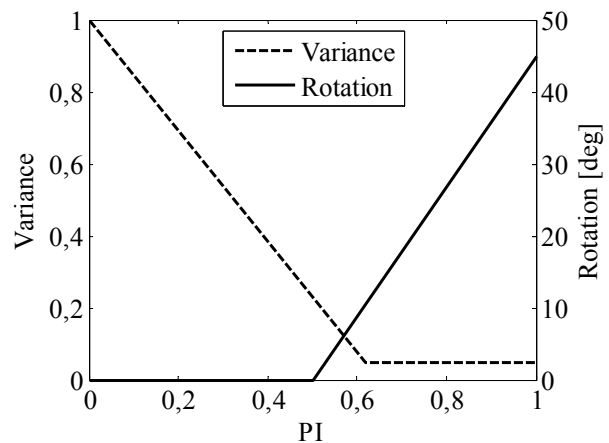


Figure 9. Mapping of PI to the width (σ_{std}^2) along the minor axis of the parallel and perpendicular distributions, together with the rotation (α) of the two distributions.

interested in interaction and, as a result, the potential function is adapted so the robot is allowed to enter the space right in front of the person. In between, in **Figure 11b**, is the default configuration of $PI=0.5$, in which the robot is forced to approach the person at approximately 45° , while keeping just outside the personal zone.

Instead of just moving towards the lowest point at a fixed speed, the gradient of the potential field $\nabla f(\mathbf{x})$, is used to set a reference velocity for the robot. The gradient is obtained from (13):

$$\nabla f(\mathbf{x}) = \sum_{k=1}^4 -[\mathbf{x} - \mathbf{0}]^T \Sigma_k^{-1} [\mathbf{x} - \mathbf{0}] c_k \exp\left(-\frac{1}{2}[\mathbf{x} - \mathbf{0}]^T \Sigma_k^{-1} [\mathbf{x} - \mathbf{0}]\right). \quad (14)$$

The reference velocity is then calculated as

$$\mathbf{v}_{ref} = k \nabla f(\mathbf{x}), \quad (15)$$

where \mathbf{v}_{ref} is the reference velocity vector and k is an adjustable parameter that controls how aggressive the motion of the robot is. This way of controlling the robot's velocity allows the robot to move quickly when the potential field is steep. On the other hand, the robot has slow comfortable movements when it is close to where it is supposed to be, i.e. near a minimum of the field.

3. Experimental Set-up

In Svenstrup, Bak, Maler, Andersen & Jensen (2008) it is demonstrated that the person detection algorithm is working in a real-world scenario in a shopping centre. The person state estimation and human-aware navigation methods are tested in a laboratory setting in Svenstrup, Hansen, Andersen & Bak (2009). Therefore, the experiments here focus on integrating all three of the methods described above into a combined system, with the main focus on the operation of learning and evaluation of interest. The experiments are designed to

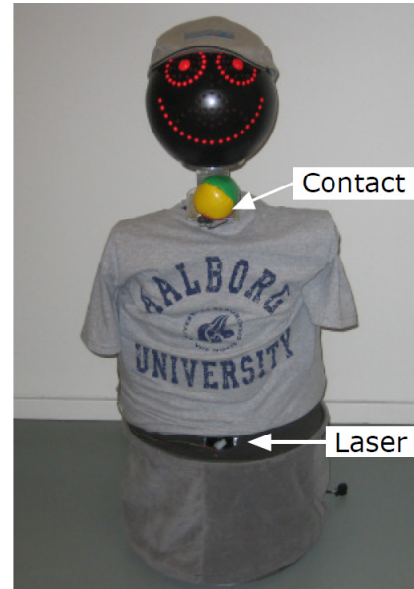


Figure 10. The FESTO Robotino robot used for the experiments.

illustrate the operation and the proof of concept of the combined methods. It took place in an open hall, with only one person at a time in the shared environment. This allowed for easily repeated tests with no interference from other objects than the test persons. The test persons were selected randomly from the students on campus. None had prior knowledge about the implementation of the system.

3.1 Test Equipment and Implementation

The robot used during the experiments was a FESTO Robotino platform, which provides omnidirectional motion. A head, which is capable of showing simple facial expressions, is mounted on the robot (see **Figure 10**). The above described algorithms have been implemented in the robot control software framework Player/Stage (Collett, MacDonald & Gerkey, 2005), which is implemented on the robot. The framework also enables simulation before experiments. The robot is equipped with an URG-04LX line scan laser range finder for detection and tracking of people, and a button to press for

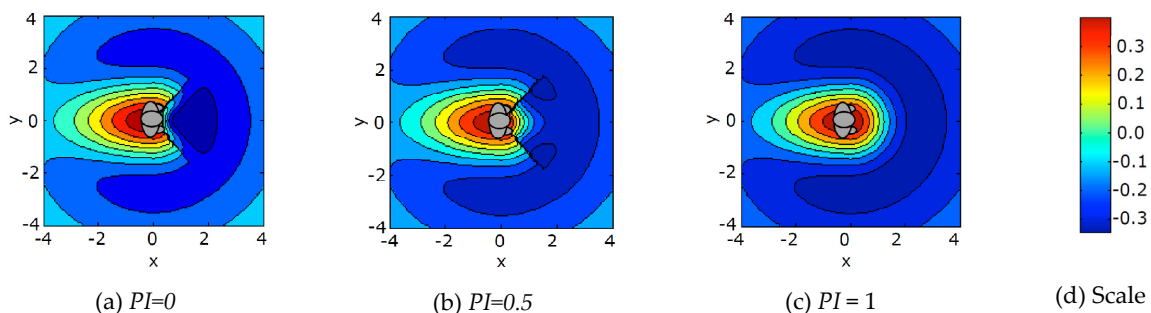


Figure 11. Shape of the potential field for (a), a person not interested in interaction, (b) a person considered for interaction, and (c) a person interested in interaction. The scale for the potential field is plotted to the right and the value of the person interested indicator PI is noted under each plot.

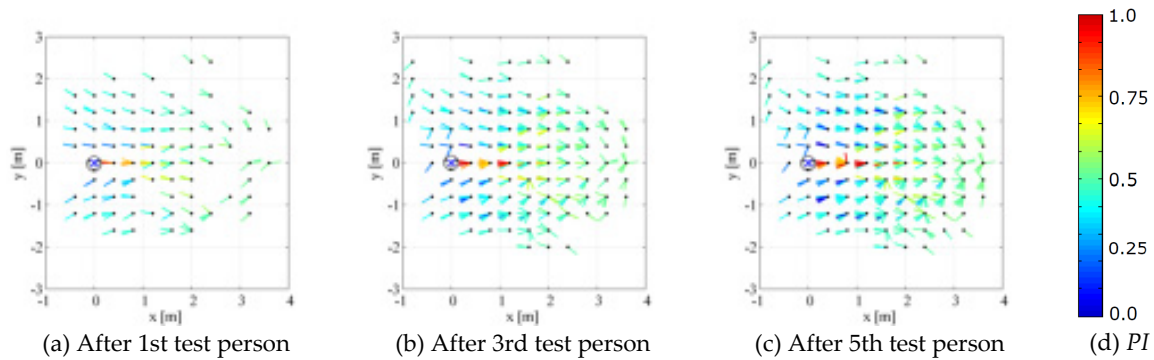


Figure 12. The figures show the values stored in the CBR system after completion of the 1st, 3rd and 5th test person. Note that the robot is located at the origin (0,0), since the measurements are in the robot's coordinate frame, which follows the robot's motion. Each dot represents a position of the test person in the robot's coordinate frame. The direction of the movement of the test person is represented by a vector, while the level (PI) is indicated by the colour range.

emulating the transition to close interaction (see **Figure 10**). If the test persons passed an object to the robot, they would activate the button, which was perceived as an interest in close interaction. If the test person did not pass an object (i.e. the button was not activated) within 15 seconds or disappeared from the robot's field of view, this was recognised as if no close interaction had occurred.

The CBR database has been implemented using MySQL. To make the case database tractable, the position (p_x, p_y) was sampled using a grid resolution of 40cm, and the resolution of the orientation of a person has been set to $0.2rad$. A learning rate, $L = 0.3$, which is a fairly conservative learning strategy, has been used for the experiments.

3.2 Test Specification

For evaluation of the proposed methods, two experiments with the combined system were performed. During both experiments the full system, as seen in **Figure 1**, is used, i.e. the pose estimation and the human-aware navigation are running, as well as the interest learning and evaluation. All output values (PI), and input values (pose and velocity) were logged for later analysis during both experiments.

In **Experiment 1**, the objective was to see if the system was capable of learning to estimate PI based on interaction experience from several different people. As the number of cases increase, the system should be better able to estimate PI of a person and do it more quickly. Furthermore, the information in the CBR database should be generic, such that information obtained with some people can be used when other people occur. Starting from a CBR system with no knowledge, i.e. an empty database, a total of five test persons were asked to approach or pass the robot 12 times each using different motion patterns (see **Figure 13**). The starting and end

points of each session were selected randomly, while the specific route was chosen by the test person. The random selection was designed so the test persons would end up with close interaction in 50% of the sessions. In the other sessions, the test persons would pass the robot either to the left of the right without interacting.

In **Experiment 2**, the objective was to test the adaptiveness of the CBR system. The system should be able to change its estimation of PI over time if behaviour patterns change. A total of 36 test approaches were performed with one test person. The test person would start randomly at P1, P2 or P3 (see **Figure 13**) and end the trajectory at P4, P5 or P6. In the first 18 sessions the test person would indicate interest in close interaction by handing an object to the robot from P5, while in the last 18 sessions the person did not indicate interest and the trajectory ended at P4 or P6.

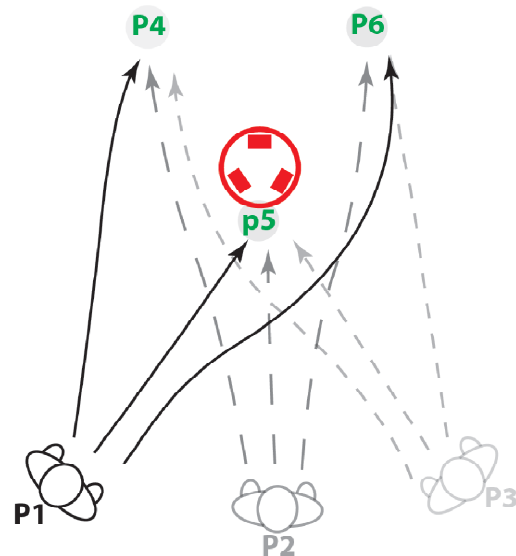


Figure 13. Illustration of possible pathways around the robot during the experiment. A test person starts from points P1, P2 or P3 and passes through either P4, P5 or P6. If the trajectory goes through P5, a close interaction occurs by handing an object to the robot.

4. Results

4.1 Experiment 1

As interaction sessions are registered by the robot, the database is gradually filled with cases. All entries in the database after different stages of training are illustrated by four-dimensional plots in **Figure 12**. The (x, y) coordinates are the position coordinates (p_x, p_y) of the person in the robot's coordinate frame, as estimated by the pose estimation algorithm. The coordinates are the dots in the 40×40 cm grid. At each position, the orientation of the person (θ) is illustrated by a vector. The colour of the vector denotes the value of PI . Blue indicates that the person does not wish close interaction, while red indicates that the person wishes to engage in close interaction, i.e. $PI=0$ and $PI=1$ correspondingly. A green vector indicates $PI=0.5$.

Figure 12(a–c) show how information in the database evolves during the experiment. **Figure 12a** shows the state of the database after the first person has completed the 12 sessions. Here, the database is seen to be rather sparsely populated with PI values mostly around 0.5, which means that the CBR system is not well trained yet. **Figure 12b** shows the state after 3 test persons have completed the 12 sessions and, finally, **Figure 12c** shows all cases (around 500) after all 5 test persons have completed the sessions. Here the database is more densely populated, and PI values are in the whole range from 0 to 1.

In **Figure 15**, the PI development for six individual sessions, are plotted as a function of time. This is done for test persons 1, 3 and 5. PI is plotted twice for each test person: once for a randomly selected session where the test person wishes interaction with the robot; and once for a randomly selected session where the test person passes the robot with no interest in interaction. For the first test person, PI increases to a maximum around 0.65 for a session ending with a close interaction. For the same

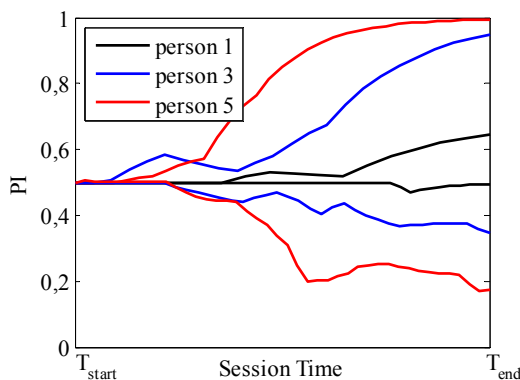


Figure 15. PI as a function of the session time for three different test persons. For each test person, PI is plotted for a session where close interaction occurs and for a session where no close interaction occurs. The x -axis shows the session time. The axis is scaled such that the plots have equal length.

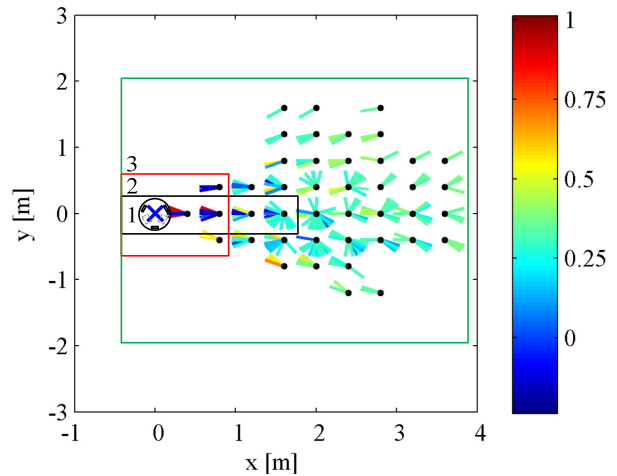


Figure 14. A snapshot of the database after the second experiment was done. It shows how the mean value for PI is calculated for three areas: 1) the frontal area; 2) the small area; and 3) for all cases. The development of the mean values over time for all three areas is illustrated in **Figure 16**.

test person, PI drops to a minimum of 0.48 for a session where no close interaction occurs. For the 3rd test person, PI ends with a value around 0.9 for a session where close interaction has occurred, while $PI = 0.35$ for a session where no close interaction has occurred. For the last test person, PI rapidly increases to a value around 1 for a session where close interaction occurs, and has PI around 0.18 when the person is not interested in interaction. Generally PI is estimated more quickly and with more certainty the more the system is trained.

4.2 Experiment 2

Experiment 2 tests the adaptiveness of the CBR system. In order to see the change in the system over time, the average PI value in the database after each session is calculated. The averages have been calculated as an average for three different areas (see **Figure 14**), to be able to compare how the database changes in different areas relative to the robot. The areas are:

- **Area 1:** The frontal area just in front of the the robot.
- **Area 2:** A small area around the robot, which includes some of the frontal area, and some to the sides as well.
- **Area 3:** All cases stored in the database.
-

Figure 16 shows the development of the average values of PI for the 36 interaction sessions for one person.

As can be seen from **Figure 16**, the average value of PI increases for the first 18 sessions, where the person is interested in close interaction. This is especially the case for areas 1 and 2, which have a maximum value at 0.9 and 0.85 respectively, but less for area 3 (around 0.65). After

18 sessions, there is a bend on the graph and *PI* starts to drop for all areas. Most notably, area 1 drops to a minimum of 0.39 after 36 sessions.

5. Discussion

As can be seen in Figure 12(a-c), the number of plotted database entries increases as more interaction sessions occur. This shows the development of the CBR system, and clearly illustrates how the CBR system gradually learns from each person interaction session. The number of new cases added to the database is highest at the beginning of the training period where few (or no) case matches are found. As the training continues, the number of new cases added to the database is reduced as matching cases are found. The growth of the database, when training, depends on the resolution of the selected case features and the time and complexity of the training scenario. Based on current experiments there are no indications that the database will grow towards being inappropriately large. In Figure 12(a-c), the vectors are gradually turning from either red or blue to green as distance increases. This is expected, as the weight, which determines how much *PI* is changed for each update, is a function of the distance between the robot and the test person (see Figure 7). This is reasonable as it gets more difficult to assess human interest at long distance.

In all three figures (Figure 12(a-c)), the vectors in the red colour range (high *PI*) are dominant when the orientation of the person is towards the robot, while there is an excess of vectors not pointing directly towards the robot in the blue colour range (low *PI*). This reflects that a person, who wishes to interact, has a trajectory moving towards the robot, which is as expected for a normal human interaction process.

Figure 15 shows the development of *PI* over time for six individual sessions with positive and negative interest in

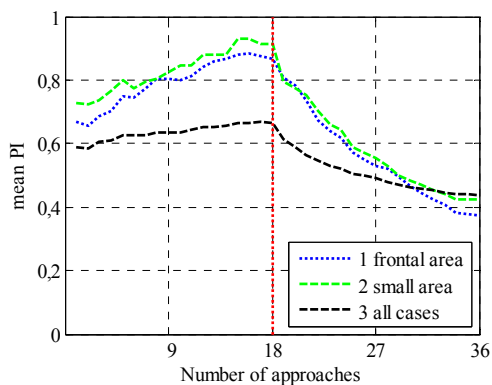


Figure 16. Graph of how the average of *PI* evolves for the three areas indicated in Figure 14. 36 person interaction sessions for one test person is performed. The red vertical line illustrates where the behaviour of the person changes from seeking interaction to not seeking interaction.

interaction, respectively. It can be seen how maximum and minimum values for *PI* increase as more test persons have been evaluated. After evaluating one test person, the robot has gathered very little interaction experience, and has difficulty in determining the correspondence between motion pattern and end result — hence, *PI* stays close to 0.5. After the third test person, the robot has gathered more cases and, therefore, improves in estimating the outcome of the behaviour. For the last test person, the robot is clearly capable of determining what will be the outcome of the interaction session. Each session takes between 2 and 4 seconds depending on the velocity of the user. Changes in estimation of *PI* can be seen in the first quartile of each session, while maximum (or minimum) is not reached before the fourth quartile.

Figure 16 shows the development of the average *PI* value over time. It can be seen that *PI* changes more for areas 1 and 2 close to the robot, than for area 3. This is because most cases will be close to 0.5 at large distances owing to the distance weight function in Eq. (12). Furthermore, in most sessions the person's trajectory goes through the frontal area, thereby having the highest number of updates of *PI*. Figure 16 illustrates that the database quickly starts to adapt to the new environment, when the test person changes the behaviour to no interaction after the first 18 sessions.

In short, the experiments show that:

- Determination of *PI* improves as the number of CBR case entries increases, which means that the system is able to learn from experience.
- The CBR system is independent of the specific person, such that experience based on motion patterns of some people, can be used to determine the *PI* of other people.
- The algorithm is adaptive, when the general behaviour of the people changes.

5.1 General Discussion on Reasoning System and Adaptive Behaviour

Generally, the conducted experiments show that CBR can be applied advantageously to a robot, which needs to evaluate the behaviour of a person. The method for assessment of the person's interest in interaction with the robot is based on very limited sensor input. This is encouraging as the method may easily be extended with support from other sensors, such as computer vision, acoustics etc.

The results demonstrate how, by fairly simple training, a robot can learn to estimate the interaction interest of a person. Such training may be used to give the robot an initial database that may later be refined to the specific situation in which it operates.

The proposed method for human-aware navigation demonstrates how Hall's zones, together with more recent results about the preferred robot encounter, may be used for the design of an adaptive motion strategy.

The three methods — person pose estimation, learning and evaluation of interest in interaction, and human-aware navigation — are decoupled in the sense that they only have a simple interface with each other. This opens a way of using the methods separately with other control, navigation or interaction strategies.

This work shows that by coupling the CBR system with human-aware navigation, the result is an adaptive robot behaviour respecting the personal zones depending on the person's interest to interact — a step forward from previous studies (Sisbot, et al., 2005; Sisbot, Clodic, Urias, Fontmartry, Brèthes & Alami, 2006).

6. Conclusions

In this work, we have described an adaptive system for natural motion interaction between mobile robots and humans. The system forms a basis for human-aware navigation respecting a person's social spaces. The system consists of three independent components:

- A new method for pose estimation of a human by using laser rangefinder measurements.
- Learning human behaviour using motion patterns and Case-Based Reasoning (CBR).
- A human-aware navigation algorithm based on a potential field.

Pose estimates are used in a CBR system to estimate the person's interest in interaction, and the spatial behaviour strategies of the robot are adapted accordingly using adaptive potential functions.

The evaluation of the system has been conducted through two experiments in an open environment. The first of the two experiments of the combined system shows that the CBR system gradually learns from interaction experience. The experiment also shows how motion patterns from different people can be stored and generalised in order to predict the outcome of an interaction session with a new person.

The second experiment shows how the estimated interest in interaction adapts to changes in behaviour of a test person. It is illustrated how the same motion pattern can be interpreted differently after a period of training.

The presented system is a step forward in creating socially intelligent robots, capable of navigating in an everyday environment and interacting with human beings by understanding their interest and intention. In the long-term perspective, the results could be applied to service or assistive robots in e.g. health-care systems.

In this paper, the potential field is used to steer the robot around one person, who might or might not be interested in interaction. But the potential field could also be used for navigation in populated areas with more people present. This could, for example, be in a pedestrianised street, where the robot has to move around.

7. References

- Althaus, P., Ishiguro, H., Kanda, T., Miyashita, T. & Christensen, H. T. (2004). Navigation for human-robot interaction tasks. *Proceedings of IEEE International Conference on Robotics and Automation, 2004. ICRA '04*, (pp. 1894-1900).
- Andersen, H. J., Bak, T. & Svenstrup, M. (2008). Adaptive Robot to Person Encounter : By Motion Patterns. *Proceedings of the International Conference on Research and Education in Robotics, EUROBOT 2008*. Heidelberg.
- Breazeal, C. (2002). *Designing Sociable Robots*. Cambridge, MA, USA: MIT Press.
- Bruce, A., Nourbakhsh, I. & Simmons, R. (2001). The role of expressiveness and attention in human-robot interaction. *AAAI Fall Symposium*.
- Christensen, H. I. & Pacchierotti, E. (2005). Embodied Social Interaction for Robots. *AISB*, (pp. 40-45). Hertfordshire.
- Cielniak, G., Treptow, A. & Duckett, T. (2005). Quantitative performance evaluation of a people tracking system on a mobile robot. *Proc. 2nd European Conference on Mobile Robots*.
- Collett, T., MacDonald, B. A. & Gerkey, B. P. (2005). Player 2.0: Toward a Practical Robot Programming Framework. *In Proceedings of the Australasian Conference on Robotics and Automation (ACRA 2005)*.
- Dautenhahn, K. (2007). Methodology & Themes of Human-Robot Interaction: A Growing Research Field. *International Journal of Advanced Robotic Systems*, 103-108.
- Dautenhahn, K., Walters, M., Woods, S., Koay, K. L., Sisbot, E. A., Alami, R., et al. (2006). How may I serve you? A robot companion approaching a seated person in a helping context. *HRI Human Robot Interaction (HRI 06)*.
- Dornaika, F. & Raducanu, B. (2008). Detecting and Tracking of 3D Face Pose for Human-Robot Interaction. *Proceedings IEEE International Conference on Robotics and Automation, ICRA*, (pp. 1716-1721).
- Fajen, B. & Warren, W. (2003). The behavioral dynamics of steering, obstacle avoidance, and route selection. *Journal of Experimental Psychology: Human Perception and Performance*, 343-362.
- Feil-Seifer, D. & Mataric, M. J. (2005). A multi-modal approach to selective interaction in assistive domains. *IEEE International Workshop on Robot and Human Interactive Communication, ROMAN*, (pp. 416-421).

- Fod, A., Howard, A. & Mataric, M. J. (2002). Laser-Based People Tracking. *IEEE International Conference on Robotics & Automation (ICRA)*, (pp. 3024-3029).
- Fong, T., Nourbakhsh, I. & Dautenhahn, K. (2003). A survey of socially interactive robots. *Robotics and Autonomous Systems*, 42 (3-4), 143-166.
- Gockley, R., Forlizzi, J. & Simmons, R. (2006). Interactions with a moody robot. *Proceedings of the 1st ACM SIGCHI/SIGART conference on Human-Robot Interaction*, (p. 193).
- Govea, D. A. (2007). *Phd Thesis: Incremental Learning for Motion Prediction of Pedestrians and Vehicles*. Institut National Polytechnique de Grenoble.
- Hall, E. T. (1963). A system for the notation of proxemic behavior. *American Anthropologist*, 1003-1026.
- Hall, E. T. (1966). *The Hidden Dimension*. Doubleday.
- Hanajima, N., Ohta, Y., Hikita, H. & Yamashita, M. (2005). Investigation of impressions for approach motion of a mobile robot based on psychophysiological analysis. *IEEE International Workshop on Robots and Human Interactive Communication, RO-MAN 2005*, (pp. 79-84).
- Jenkins, O. C., Serrano, G. G. & Loper, M. M. (2007). Recognizing Human Pose and Actions for Interactive Robots. In N. Sarkar, *Human Robot Interaction*. I-Tech Education and Publishing.
- Jun, M., Roumeliotis, S. & Sukhatme, G. (1999). State estimation of an autonomous helicopter using Kalman filtering. *Proceedings of the IEEE/RSJ International Conference on Intelligent Robots and Systems, 1999. IROS '99*.
- Jurisica, I. & Glasgow, J. (1995). Applying Case-Based Reasoning to Control in Robotics. *3rd Robotics and Knowledge-Based Systems Workshop*. Quebec.
- Kahn, P., Ishiguro, H., Friedman, B. & Kanda, T. (2006). What is a Human?? Toward Psychological Benchmarks in the Field of Human-Robot Interaction. *The 15th IEEE International Symposium on Robot and Human Interactive Communication, 2006. ROMAN 2006*, (pp. 364-371).
- Kanda, T. (2007). Field trial approach for communication robots. *Proceedings of the 16th IEEE International Symposium on Robot and Human interactive Communication RO-MAN*, (pp. 665-666).
- Kelley, R., Tavakkoli, A., King, C., Nicolescu, M., Nicolescu, M. & Bebis, G. (2008). Understanding human intentions via hidden Markov models in autonomous mobile robots. *3rd ACM/IEEE international conference on Human-Robot Interaction (HRI)* (pp. 367-374). Amsterdam: ACM.
- Kirby, R., Forlizzi, J. & Simmons, R. (2007). Natural Person-Following Behavior for Social Robots. *Human-Robot Interaction (HRI)*, (pp. 17-24).
- Kleinhagenbrock, M., Lang, S., Fritsch, J., Lomker, F., Fink, G. A. & Sagerer, G. (2002). Person tracking with a mobile robot based on multi-modal anchoring. *11th IEEE International Workshop on Robot and Human Interactive Communication (RO-MAN)*, (pp. 423-429).
- Kolodner, J. (1993). *Case-Based Reasoning*. San Francisco, CA, USA: Morgan Kaufmann Publishers Inc.
- Likhachev, M. & Arkin, R. C. (2001). Spatio-temporal case-based reasoning for behavioral selection. *IEEE International Conference on Robotics and Automation, ICRA*, (pp. 1627-1634).
- Merwe, R. v., Julier, E. W., Bogdanov, A., Harvey, G. & Hunt, J. (2004). Sigma-Point Kalman Filters for Nonlinear Estimation and Sensor Fusion: Applications to Integrated Navigation. *AIAA Guidance Navigation & Control Conference*.
- Michalowski, M. P., Sabanovic, S. & Simmons, R. (2006). A Spatial Model of Engagement for a Social Robot. *The 9th International Workshop on Advanced Motion Control, AMC06*. Istanbul.
- Munoz-Salinas, R., Aguirre, E., Garcia-Silvente, M. & Gonzalez, A. (2005). People detection and tracking through stereo vision for human-robot interaction. *MICAI 2005: Advances in Artificial Intelligence*, 337-346.
- Ram, A., Arkin, R. C., Moorman, K. & Clark, R. J. (1997). Case-Based Reactive Navigation: A Case-Based Method for On-Line Selection and Adaptation of Reactive Control Parameters in Autonomous Robotic Systems. *IEEE Transactions on Systems, Man, and Cybernetics*, 376-394.
- Rodgers, J., Anguelov, D., Pang, H.-C. & Koller, D. (2006). Object Pose Detection in Range Scan Data. *IEEE Computer Society Conference on Computer Vision and Pattern Recognition*, (pp. 2445-2452).
- Sisbot, E. A., Alami, R., Siméon, T., Dautenhahn, K., Walters, M., Woods, S., et al. (2005). Navigation in the Presence of Humans. *IEEE-RAS International Conference on Humanoid Robots*.
- Sisbot, E. A., Clodic, A., Urias, L. F., Fontmarty, M., Brèthes, L. & Alami, R. (2006). Implementing a Human-Aware Robot System. *IEEE International Symposium on Robot and Human Interactive Communication RO-MAN*.
- Stiefelhagen, R., Ekenel, H., Fugen, C., Gieselmann, P., Holzapfel, H., Kraft, F., et al. (2007). Enabling Multimodal Human-Robot Interaction for the Karlsruhe Humanoid Robot. *IEEE Transactions on Robotics*, 840-851.
- Svenstrup, M., Bak, T., Maler, O., Andersen, H. J. & Jensen, O. B. (2008). Pilot Study of Person Robot Interaction in a Public Transit Space. *Proceedings of the International Conference on Research and Education in Robotics - EUROBOT 2008*. Heidelberg.
- Svenstrup, M., Hansen, S. T., Andersen, H. J. & Bak, T. (2009). Pose Estimation and Adaptive Robot Behaviour for Human-Robot Interaction. *Proceedings of the 2009 IEEE International Conference on Robotics and Automation. ICRA 2009*.

- Takayama, L. & Pantofaru, C. (2009). Influences on Proxemic Behaviors in Human-Robot Interaction. *IEEE/RSJ international conference on intelligent robots and systems (IROS)*, (pp. 5495-5502).
- Vinciarelli, A., Pantic, M. & Bourlard, H. (2009). Social signal processing: Survey of an emerging domain. *Image and Vision Computing*, 1743-1759.
- Vinciarelli, A., Pantic, M., Bourlard, H. & Pentland, A. (2008). Social signal processing: state-of-the-art and future perspectives of an emerging domain. *Proceeding of the 16th ACM international conference on Multimedia*, (pp. 1061-1070).
- Walters, M. L., Dautenhahn, K., Koay, K. L., Kaouri, C., te Boekhorst, R., Nehaniv, C., et al. (2005). Close Encounters: Spatial Distances between People and a Robot of Mechanistic Appearance. *5th IEEE-RAS International Conference on Humanoid Robots*, (pp. 450-455). Tsukuba, Japan.
- Walters, M. L., Dautenhahn, K., te Boekhorst, R., Koay, K. L., Kaouri, C., Woods, S., et al. (2005). The Influence of Subjects' Personality Traits on Personal Spatial Zones in a Human-Robot Interaction Experiment. *IEEE International Symposium on Robot and Human Interactive Communication (RO-MAN)*, (pp. 347-357).
- Woods, S., Walters, M. L., Koay, K. & Dautenhahn, K. (2006). Methodological Issues in HRI: A Comparison of Live and Video-Based Methods in Robot to Human Approach Direction Trials. *The 15th IEEE International Symposium on Robot and Human Interactive Communication (RO-MAN06)*. Hatfield, UK.
- Xavier, J., Pacheco, M., Castro, D., Ruano, A. & Nunes, U. (2005). Fast Line, Arc/Circle and Leg Detection from Laser Scan Data in a Player Driver. *IEEE International Conference on Robotics and Automation*, (pp. 3930-3935).
- Zeng, Z., Pantic, M., Roisman, G. & Huang, T. (2008). A survey of affect recognition methods: Audio, visual, and spontaneous expressions. *IEEE Transactions on Pattern Analysis and Machine Intelligence*, 39-58.