








# Dynamics of the MRSA Population in a Chilean Hospital: a Phylogenomic Analysis (2000–2016)

José R. W. Martínez,<sup>a,b</sup> Paul J. Planet,<sup>c,d,e</sup> Maria Spencer-Sandino,<sup>a,b</sup> Lina Rivas,<sup>a,b</sup> Lorena Díaz,<sup>a,b,f</sup> Ahmed M. Moustafa,<sup>c,d,g</sup> Ana Quesille-Villalobos,<sup>a,b</sup> Roberto Riquelme-Neira,<sup>a,b,h</sup> Manuel Alcalde-Rico,<sup>a,b,i</sup>  Blake Hanson,<sup>j</sup> Lina P. Carvajal,<sup>f</sup> Sandra Rincón,<sup>f</sup>  Jinnethe Reyes,<sup>f</sup> Marusella Lam,<sup>k</sup> Juan F. Calderon,<sup>l,m</sup>  Rafael Araos,<sup>a,b</sup> Patricia García,<sup>b,k</sup>  César A. Arias,<sup>n,o,p</sup>  José M. Munita<sup>a,b,q</sup>

<sup>a</sup>Genomics & Resistant Microbes (GeRM), ICIM, Facultad de Medicina Clínica Alemana, Universidad del Desarrollo, Santiago, Chile

<sup>b</sup>Multidisciplinary Initiative for Collaborative Research On Bacterial Resistance (MICROB-R), Santiago, Chile

<sup>c</sup>Division of Pediatric Infectious Diseases, Children's Hospital of Philadelphia, Philadelphia, Pennsylvania, USA

<sup>d</sup>Department of Pediatrics, Perelman School of Medicine, University of Pennsylvania, Philadelphia, Pennsylvania, USA

<sup>e</sup>American Museum of Natural History, New York, New York, USA

<sup>f</sup>Molecular Genetics and Antimicrobial Resistance Unit, Universidad El Bosque, Bogotá, Colombia

<sup>g</sup>Division of Gastroenterology, Hepatology, and Nutrition, Children's Hospital of Philadelphia, Philadelphia, Pennsylvania, USA

<sup>h</sup>Núcleo de Investigaciones Aplicadas en Ciencias Veterinarias y Agronómicas, Facultad de Medicina Veterinaria y Agronomía, Universidad de Las Américas, Santiago, Chile

<sup>i</sup>Grupo de Resistencia a los Antibióticos en Bacterias Patógenas y Ambientales (GRABPA), Pontificia Univ. Católica de Valparaíso, Valparaíso, Chile

<sup>j</sup>Center for Antimicrobial Resistance and Microbial Genomics, Univ. of Texas Health Science Center, McGovern Medical School, Houston, Texas, USA

<sup>k</sup>Departamento de Laboratorios Clínicos, Escuela de Medicina, Pontificia Universidad Católica de Chile, Santiago, Chile

<sup>l</sup>Centro de Genética y Genómica Instituto de Ciencias e Innovación en Medicina Facultad de Medicina Clínica Alemana Universidad Del Desarrollo, Santiago, Chile

<sup>m</sup>Research Center for the Development of Novel Therapeutic Alternatives for Alcohol Use Disorders, Santiago, Chile

<sup>n</sup>Division of Infectious Diseases, Houston Methodist Hospital, Houston, Texas, USA

<sup>o</sup>Center for Infectious Diseases, Houston Methodist Research Institution, Houston, Texas, USA

<sup>p</sup>Department of Medicine, Weill Cornell Medical College, New York, New York, USA

<sup>q</sup>Hospital Padre Hurtado, Santiago, Chile

**ABSTRACT** The global dissemination of methicillin-resistant *Staphylococcus aureus* (MRSA) is associated with the emergence and establishment of clones in specific geographic areas. The Chilean-Cordobes clone (ChC) (ST5-SCC*mecI*) has been the predominant MRSA clone in Chile since its first description in 1998, despite the report of other emerging MRSA clones in recent years. Here, we characterize the evolutionary history of MRSA from 2000 to 2016 in a Chilean tertiary health care center using phylogenomic analyses. We sequenced 469 MRSA isolates collected between 2000 and 2016. We evaluated the temporal trends of the circulating clones and performed a phylogenomic reconstruction to characterize the clonal dynamics. We found a significant increase in the diversity and richness of sequence types (STs; Spearman  $r = 0.8748$ ,  $P < 0.0001$ ) with a Shannon diversity index increasing from 0.221 in the year 2000 to 1.33 in 2016, and an effective diversity (Hill number;  $q = 2$ ) increasing from 1.12 to 2.71. The temporal trend analysis revealed that in the period 2000 to 2003 most of the isolates (94.2%;  $n = 98$ ) belonged to the ChC clone. However, since then, the frequency of the ChC clone has decreased over time, accounting for 52% of the collection in the 2013 to 2016 period. This decline was accompanied by the rise of two emerging MRSA lineages, ST105-SCC*mecII* and ST72-SCC*mecVI*. In conclusion, the ChC clone remains the most frequent MRSA lineage, but this lineage is gradually being replaced by several emerging clones, the most important of which is clone ST105-SCC*mecII*. To the best of our knowledge, this is the largest study of MRSA clonal dynamics performed in South America.

**IMPORTANCE** Methicillin-resistant *Staphylococcus aureus* (MRSA) is a major public health pathogen that disseminates through the emergence of successful dominant

**Editor** Adriana E. Rosato, Riverside University Health System, Medical Center–University of California

**Copyright** © 2023 Martínez et al. This is an open-access article distributed under the terms of the [Creative Commons Attribution 4.0 International license](https://creativecommons.org/licenses/by/4.0/).

Address correspondence to José M. Munita, [josemunita@udd.cl](mailto:josemunita@udd.cl).

The authors declare no conflict of interest.

[This article was published on 20 June 2023 with an error in affiliation *p*. The affiliation was corrected in the current version, posted on 5 July 2023.]

**Received** 4 January 2023

**Accepted** 29 May 2023

**Published** 20 June 2023

clones in specific geographic regions. Knowledge of the dissemination and molecular epidemiology of MRSA in Latin America is scarce and is largely based on small studies or more limited typing techniques that lack the resolution to represent an accurate description of the genomic landscape. We used whole-genome sequencing to study 469 MRSA isolates collected between 2000 and 2016 in Chile providing the largest and most detailed study of clonal dynamics of MRSA in South America to date. We found a significant increase in the diversity of MRSA clones circulating over the 17-year study period. Additionally, we describe the emergence of two novel clones (ST105-SCC*mecII* and ST72-SCC*mecVI*), which have been gradually increasing in frequency over time. Our results drastically improve our understanding of the dissemination and update our knowledge about MRSA in Latin America.

**KEYWORDS** *Staphylococcus aureus*, clonality, genomics, methicillin resistance, phylogenomic analysis

Infections caused by methicillin-resistant *Staphylococcus aureus* (MRSA) are a major public health problem. The World Health Organization (WHO) has listed MRSA as a high-priority pathogen for targeted research and development of new antimicrobials (1). MRSA spread occurs largely through the successful dissemination of specific genomic lineages in certain geographic regions (2). Clonal replacement waves characterized by the emergence of new MRSA clones with presumably higher fitness have been well documented (2, 3). However, knowledge about the factors that drive the clonal replacement phenomenon, and the basis of increased fitness, in a specific geographical region is limited. Improving our understanding of this phenomenon is crucial to design strategies to contain MRSA spread.

Surveillance of MRSA requires molecular characterization of circulating lineages to identify outbreaks and sources of colonization, distinguish between community and hospital strains, and inform infection control strategies (4–6). MRSA lineages have been classically described using molecular typing methods such as pulsed-field gel electrophoresis (PFGE), multilocus sequence typing (MLST), and characterization of the type of SCC*mec* cassette or *spa* gene (7–10). However, current whole-genome sequencing (WGS)-based analyses provide higher granularity in the description of the evolution of bacterial organisms, and increased resolution to differentiate specific genomic lineages within strains classified as part of the same clonal group by classic typing methods (11–14). Therefore, the use of WGS provides the means for better description and understanding of the evolutionary history of human pathogens such as MRSA.

Detailed characterizations of endemic MRSA clones in low- and middle-income countries are scarce, with most of the data coming from developed regions (15–17). A prospective study including MRSA isolates recovered from the bloodstream of nine Latin American countries between 2011 and 2013 reported that the major MRSA clones circulating in the region belonged to the clonal complex (CC) 5, CC8, and CC30, with major differences among countries (18). The same study found >90% of MRSA bacteremia isolates in Chile and Peru belonged to the Chilean-Cordobes (ChC) clone, an ST5-SCC*mecI* lineage first described in Chile and Argentina in 1998 (18, 19). This ChC clone rapidly spread throughout Latin America in the early 2000s, displacing other dominant clones (20–22). However, it was later almost entirely replaced in Ecuador, Colombia, and Venezuela by a community-associated ST8-SCC*mecIV* lineage designated USA300 Latin American Variant (USA300-LV) (20, 23–25). Interestingly, the available data, all based on classical typing techniques, suggest this clonal replacement was not observed in Chile and Perú, where the ChC clone remains dominant, despite the well-documented circulation of successful pandemic lineages such as USA300 and USA300-LV (6, 18). The factors underlying this differential behavior of clonal MRSA spread within countries of the same geographical region remain largely unknown.

In this study, we aimed to provide a detailed picture of the population dynamics of MRSA clones in Chile using a collection of 469 MRSA isolates sequentially obtained

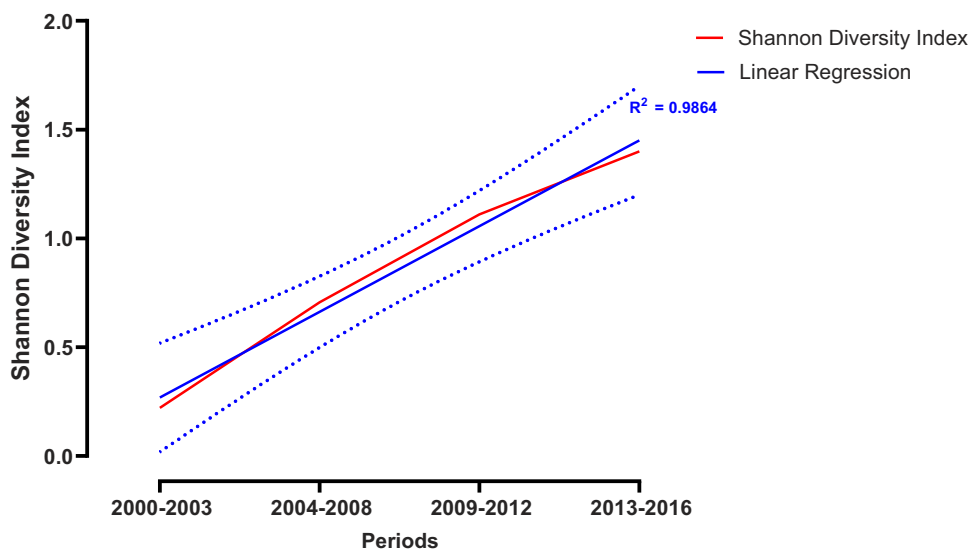
**TABLE 1** Distribution of clonal complex, ST, and SCCmec by anatomical origin

Molecular typing	Respiratory tract (n = 192)	Skin (n = 94)	Blood (n = 91)	Other sterile sites (n = 82)	Urine (n = 10)	Total (n = 469)
<i>Clonal complex - n (%)</i>						
CC5	173 (90.1)	77 (81.9)	85 (93.4)	61 (74.4)	8 (80.0)	404 (86.1)
CC72	8 (4.2)	9 (9.6)	3 (3.3)	7 (8.5)	1 (10.0)	28 (6.0)
CC8	5 (2.6)	7 (7.4)	3 (3.3)	10 (12.2)	1 (10.0)	26 (5.5)
CC30	1 (0.5)	1 (1.1)		4 (4.9)		6 (1.3)
CC22	3 (1.6)					3 (0.6)
CC97	2 (1.0)					2 (0.4)
<i>ST - n (%)</i>						
5	138 (71.9)	60 (63.8)	75 (82.4)	50 (61.0)	6 (60.0)	329 (70.1)
105	32 (16.7)	15 (16.0)	10 (11.0)	11 (13.4)	2 (20.0)	70 (14.9)
72	8 (4.2)	9 (9.6)	3 (3.3)	7 (8.5)	1 (10.0)	28 (6.0)
239	3 (1.6)		3 (3.3)	5 (6.1)		11 (2.3)
8	2 (1.0)	6 (6.4)		4 (4.9)	1 (10.0)	13 (2.8)
30	1 (0.5)	1 (1.1)		4 (4.9)		6 (1.3)
22	3 (1.6)					3 (0.6)
97	2 (1.0)					2 (0.4)
225	1 (0.5)					1 (0.2)
840	1 (0.5)					1 (0.2)
1176	1 (0.5)					1 (0.2)
1649		1 (1.1)				1 (0.2)
1750		1 (1.1)				1 (0.2)
2802				1 (1.2)		1 (0.2)
7000		1 (1.1)				1 (0.2)
<i>SCCmec - n (%)</i>						
I	136 (70.8)	59 (62.8)	75 (82.4)	48 (58.5)	6 (60.0)	324 (69.1)
II	34 (17.7)	15 (16.0)	10 (11.0)	11 (13.4)	2 (20.0)	72 (15.4)
III	3 (1.6)		3 (3.3)	5 (6.1)		11 (2.3)
IV	14 (7.3)	13 (13.8)	1 (1.1)	14 (17.1)	1 (10.0)	43 (9.2)
VI	5 (2.6)	7 (7.4)	2 (2.2)	4 (4.9)	1 (10.0)	19 (4.1)

between 2000 and 2016 in a tertiary health care center located in Santiago, Chile. We report for the first time an ongoing gradual clonal replacement of the ST5-SCCmecI ChC clone by emerging MRSA lineages that include ST105-SCCmecII and ST72-SCCmecIV-VI. Our data constitute the largest and most detailed study of clonal dynamics of MRSA carried out in South America to date.

## RESULTS

**The diversity of circulating MRSA lineages significantly increased over time.** Of a total of 469 MRSA isolates, 192 (41%) were recovered from the respiratory tract, 173 (36.9%) from the bloodstream or other sterile sites, 94 (20%) from the skin, and 10 (0.2%) from urine samples (Table 1). Our genomic analyses revealed a total of 15 different sequence types (ST) among the 469 MRSA genomes, with 91% of the isolates belonging to only three STs; ST5 ( $n = 329$ , 70.1%), ST105 ( $n = 70$ , 14.9%), and ST72 ( $n = 28$ , 6%) (Table 1). To evaluate the changes of STs over time, we performed a temporal analysis grouping the genomes in 4 time periods: 2000 to 2003, 2004 to 2008, 2009 to 2012, and 2013 to 2016. While MRSA isolates collected during 2000–2003 belonged to only two different STs (ST5 and ST239), the genomes from the 2013 to 2016 period encompassed 13 different STs (S1). This analysis demonstrated a significant increase in the diversity of STs over the years (Spearman  $r = 0.8748$ ,  $P < 0.0001$ ). Indeed, the Shannon diversity for STs increased from 0.2 in the 2000–2003 period, to 1.4 in the 2013 to 2016 period (Fig. 1). To test the adequacy of sampling at each time point, we did collectors curves by subsampling with replacement at each time interval (Fig. 2). The resulting curves show plateaus indicating that our diversity indices have converged based on the available data. Likewise, the effective diversity of STs, as measured by Hill numbers, also increased over the 4 time periods. Hill numbers provide an



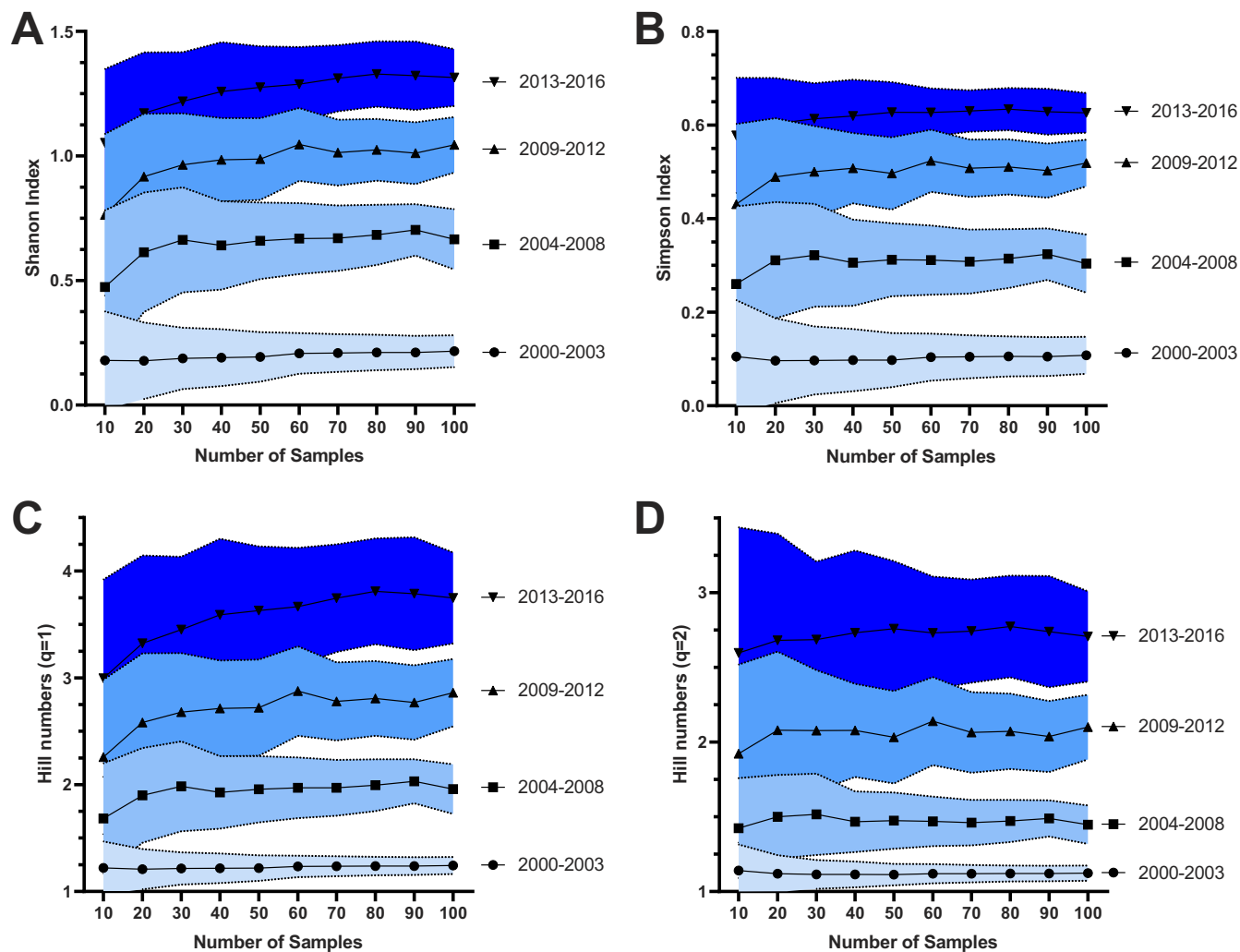
**FIG 1** Diversity of STs over time. The axes indicate the Shannon diversity index (Y-axis) and the year of isolation (X-axis). The red line represents the Shannon diversity index for each year. The continuum blue line shows the linear regression and the dotted blue line the 95% confidence interval.

intuitive measure of diversity expressed as the number of distinct types that would be representative if all types were evenly distributed (26). Interestingly, as shown in Fig. S1, the increase in ST was observed in all anatomical sites, except for the bloodstream, where we only found four STs (ST5, ST105, ST72, and ST239) throughout the 17-year study period (Fig. S1).

**Gradual replacement of the ChC ST5 MRSA clone and emergence of ST105 and ST72 lineages over the years.** To further characterize the clonal dynamics of MRSA, we used the combination of ST and *SCCmec* types and evaluated their frequency over the four aforementioned time periods. Our temporal trend analysis revealed most isolates obtained during the first period (2000 to 2003) belonged to the ChC ST5-*SCCmecI* lineage ( $n = 98$ , 94.2%), and the few remaining corresponded to ST239-*SCCmecIII* ( $n = 6$ , 5.8%) (Fig. 3). Interestingly, a gradual reduction in the frequency of the ChC clone over time was observed, dropping from the initial 94.2% to only 52% in the 2013 to 2016 period (Fig. 3). In parallel, an increase of two emerging MRSA lineages was observed: ST105 and ST72, neither of which were circulating in the first period of observation (Fig. 3 and S1). All ST105 genomes carried a *SCCmecII* type (ST105-*SCCmecII*). The frequency of ST105-*SCCmecII* gradually increased over time from 0% in 2000 to 2003% to 6% in 2004 to 2008, 19.3% in 2009 to 2012, and 23.4% in the 2013 to 2016 period (Fig. 3 and S1). In the case of ST72, two types of *SCCmec* were observed (ST72-*SCCmecIV* and ST72-*SCCmecVI*). Similar to ST105, a gradual increase was observed in ST72 frequency, from no detection at all in 2000 to 2003 to 2.0%, 6.8%, and 10.4% in the 2004 to 2008, 2009 to 2012, and 2013 to 2016 periods, respectively (Fig. 3 and S1).

We then evaluated the temporal trends of clonal frequency by anatomical site. While the frequency of the ChC ST5-*SCCmecI* clone decreased in all sites, this reduction was particularly marked in samples collected from the skin and bloodstream, with frequencies decreasing from 100% ( $n = 19$ ) and 93.5% ( $n = 43$ ) in the 2000 to 2003 period to 39.4% ( $n = 13$ ) in the skin and 37.5% ( $n = 3$ ) in the bloodstream during the 2013 to 2016 period (Fig. S1). On the other hand, while the frequency of ST105-*SCCmecII* clone increased proportionally across all anatomical sites, the ST72-*SCCmecIV/VI* lineages presented a higher frequency in isolates from the skin (21.2%) and bloodstream (25%), and lower frequency in respiratory samples (4.3%) during the 2013 to 2016 period (Fig. S1).

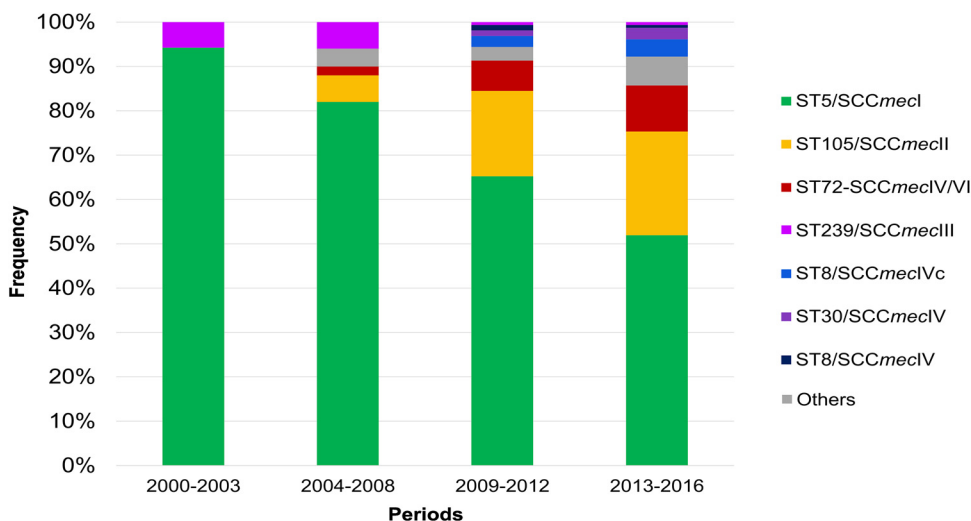
**Genomic characterization of the emerging ST105 and ST72 MRSA clones.** We performed a core-genome-based phylogenomic reconstruction to understand the genomic relationships among MRSA lineages. Additionally, to further analyze relevant characteristics within MRSA lineages circulating over this 17-year period, we also



**FIG 2** Rarefaction curves of diversity of STs over time. The axes indicate the Shannon diversity index (Y axis) and the sampling size (X axis). The curves show the Shannon diversity index (A), Simpson Index (B), and Hill numbers (C and D) for each time-period. The blue areas show the confidence interval for each period and sampling size.

searched for antimicrobial resistance genes, virulence factors, and heavy metal resistance genes. Our phylogenomic reconstruction revealed six well-defined clades (Fig. 4). Clade-1 was only composed of six ST30-SCC*mecIVc* genomes (CC30). Clade-2 consisted of three ST22-SCC*mecIVc* genomes and clade-3 included only two ST97-SCC*mecIVa* genomes. Clade-4 grouped 26 CC8 genomes: 11 ST239-SCC*mecIII*; 11 ST8-SCC*mecIVc*; two ST8-SCC*mecIVa*; one ST2802-SCC*mecIVc* and one ST1750-SCC*mecIVa*. All 28 genomes from clade-5 belonged to the ST72 lineage, of which 19 carried SCC*mecVI* and 9 SCC*mecIVc*. Finally, clade-6 grouped most of the isolates ( $n = 403$ ), all of which belonged to CC5. Of those, 325 were ST5-SCC*mecI* (ChC clone); 70 were ST105-SCC*mecII*; two ST5-SCC*mecIVc* and the remaining 6 corresponded to one of each of the following: ST5-SCC*mecIVa*, ST5-SCC*mecII*, ST225-SCC*mecII*, ST840-SCC*mecIVc*, ST1176-SCC*mecIVa*, and ST7000-SCC*mecIVc*.

All genomes harbored *mecA* and >99% carried antimicrobial resistance genes, virulence factors, and heavy metal resistance genes detailed in Table S1. Interestingly, despite belonging to the same clonal complex (CC5), the emerging ST105-SCC*mecII* lineage exhibited important differences compared to the ST5-SCC*mecI* ChC clone (Fig. 4). The genomes of ST105-SCC*mecII* lacked the aminoglycoside resistance genes *AAC(6')-Ie-APH(2'')-Ia*, and *ant(6)-Ia*, and the erythromycin and quinolone resistance gene *sat-4*, all of which were frequently harbored by isolates of the ChC clone (97.8%; 86.5%; and



**FIG 3** Temporal trends of MRSA clones. Stacked bar plot showing the frequency (% of isolates) of the different clones identified in each of the periods.

87.1%, respectively) (Fig. 4). In contrast, the ST105-SCCmecII lineage frequently carried the aminoglycoside resistance gene *ant(4)-Ia* (75.7%), the bleomycin resistance gene *bleO* (75.7%); and the virulence factors *sdrD* (97.1%), related to immune evasion, the enterotoxin *sed* (90%), and *fnbB* (80%), which encodes a fibrinogen binding protein associated with biofilm formation. Notably, all of these genetic traits were absent in the ST5-SCCmecI ChC clone (Fig. 4). In addition, while a large proportion of the ChC clone presented the heavy metal resistance clusters *arsBCR* (81.8%), *cadAC* (81.5%), and *merABTR* (79.4%), these genetic traits were absent in genomes of the ST105-SCCmecII lineage. Both ST5-SCCmecI and ST105-SCCmecII frequently carried the *cadDX* cadmium resistance genes (91.4% and 81.5%, respectively) (Fig. 4).

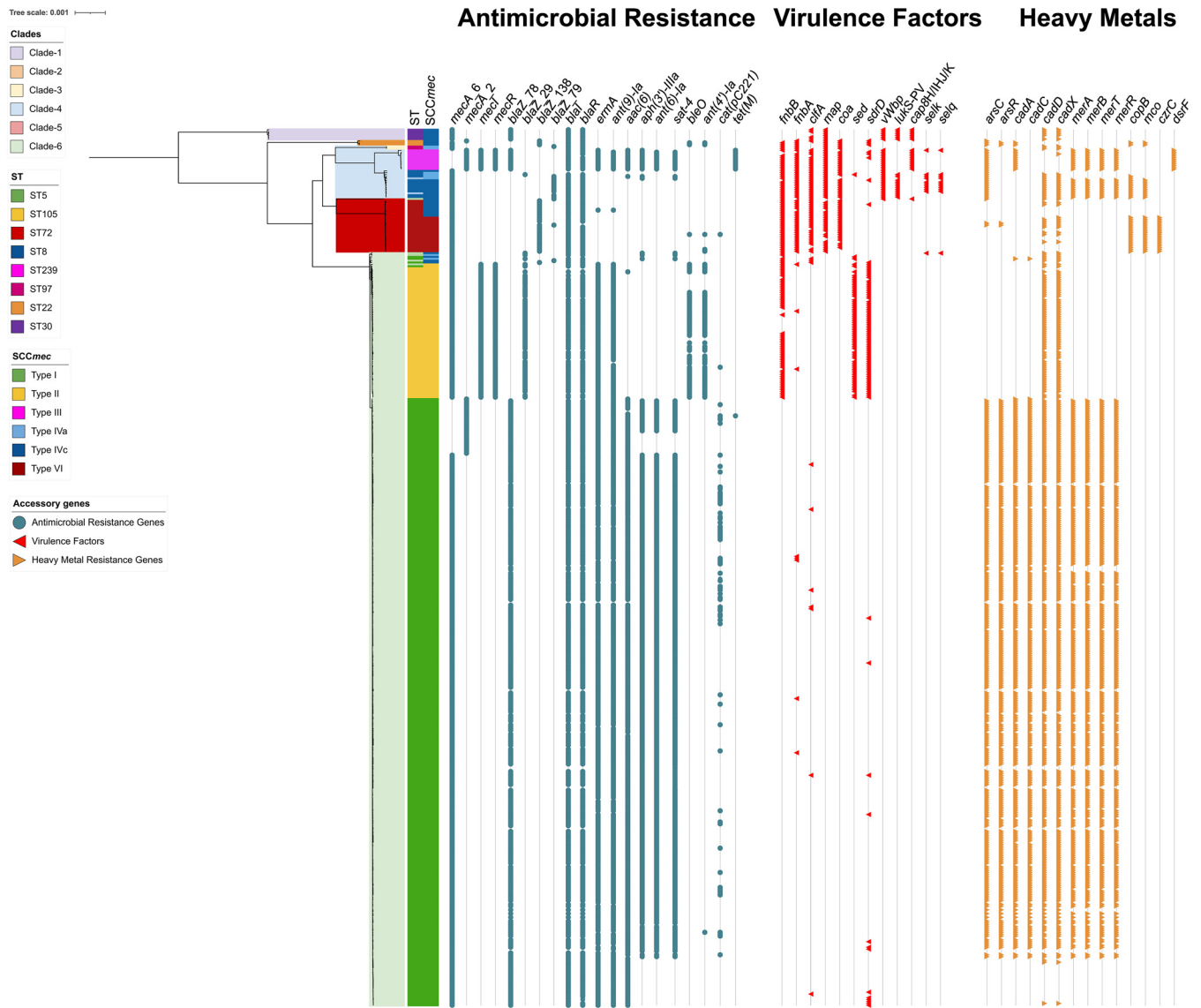
Similarly, the emerging ST72 lineage lacked several of the antimicrobial resistance genes present in the ChC clone but displayed a high frequency of virulence factors such as *fnbA* (93%), *fnbB* (100%), *clfA* (89%), *coa* (89%), and *map* (82%) (Fig. 4). Interestingly, the main difference between the ST72-SCCmecIV and ST72-SCCmecVI was the presence of the heavy metal resistance genes *copB*, *mco*, and *czrC* in all the ST72-SCCmecVI isolates, none of which were observed in ST72-SCCmecIV (Fig. 4).

## DISCUSSION

In this study, we performed WGS on a collection of 469 invasive MRSA isolates obtained in a tertiary health care center from Santiago, Chile, over a 17-year period (2000 to 2016) with the aim of providing a detailed picture of the clonal dynamics of MRSA. Our data suggest that there was a significant increase in the diversity of circulating MRSA clones over the years. In addition, we report an ongoing gradual clonal replacement of the ST5-SCCmecI ChC clone by two emerging MRSA lineages that include ST105-SCCmecII and ST72-SCCmecIV-VI.

Our first relevant observation was an important increase in the diversity of STs of MRSA circulating during the study period. Indeed, while only two STs were found during 2000 to 2003, this number increased to 13 during the subsequent periods of observation. Our findings differ from the classical description of clonal MRSA replacement events, where the number of circulating clones is limited, and dominant lineages are replaced by new, better-adapted clones (2). However, a recent multicenter study performed in China over a 6-year period (2014 to 2020) reported an increase in the diversity of circulating MRSA lineages over time (27). A key common aspect between this study and our current report is the use of WGS-based analyses, which likely results in better resolution to differentiate closely related isolates that could otherwise be classified as the same clone by classical typing techniques.





**FIG 4** Phylogenomic reconstruction of the 469 isolates of MRSA. Phylogenomic reconstruction rooted to the midpoint of genomic distances. The most important clades are represented by colors within the reconstruction. The colored bands indicate the genetic lineage (ST and *SCCmec*). Dots show the presence of antimicrobial resistance genes. Red triangles indicate the presence of virulence factors. Yellow triangles indicate the presence of heavy metal resistance genes.

Our data confirm the ST5-*SCCmec* ChC clone continues to be the predominant MRSA lineage in the country. However, our findings also suggest the ChC clone is gradually being replaced by two emerging MRSA lineages, ST105 and ST72. The ST105-*SCCmec* lineage is closely related to the ChC clone as they both belong to the same clonal complex (CC5). Interestingly, a recent study described the emergence of an ST105-*SCCmec* lineage (designated as the RdJ clone) between 2014 and 2017 in Rio de Janeiro, Brazil, showing a strong association with bloodstream infections and a higher rate of immune evasion (28). In line with these findings, our analysis, stratifying by the source of isolation, demonstrated that the ST105-*SCCmec* lineage was first detected in bloodstream samples (Fig. S1). Also, our data suggest the magnitude of the clonal replacement of the ChC clone differs among anatomical sites, with higher prevalence in respiratory samples as opposed to blood or skin (Fig. S1). The factors underlying these differences are not fully understood and require further studies. It is also worth mentioning that Arias et al. also described the ST105-*SCCmec* lineage in Chile and Brazil, in 2013 (18). However, genomic analyses revealed important differences between isolates belonging to this lineage recovered in these two countries. In

particular, ST105-SCC*mecI* isolates from Brazil harbored the aminoglycoside resistance gene *APH(3')-III*, and the macrolide resistance genes *msrA* and *mphC*, none of which were found in Chilean isolates (18). Similarly, genomes of ST105-SCC*mecI* from our collection lacked *APH(3')-III*, *msrA*, *mphC*, and *chp*, suggesting that the emerging clone observed herein belongs to the same lineage previously described by Arias and colleagues (18). Altogether, our observations suggest that despite being part of the same lineage, ST105-SCC*mecI* isolates emerging in Chile and Brazil exhibit potentially important genomic differences. The study of the implications of these disparities is part of our ongoing research efforts.

The other emerging lineages observed in our results belong to ST72 and include the ST72-SCC*mecIV* and ST72-SCC*mecVI*. The former is a genetic lineage previously described in community-associated infections in South Korea (29–31). In contrast, to the best of our knowledge, this is the first description of ST72-SCC*mecVI*. Our phylogenomic analysis suggested these two clones are closely related, as observed in Fig. 3. Interestingly, previous studies have included ST72-SCC*mecIV* as part of the CC8 lineage (32–34). However, our phylogenomic analysis revealed that ST72 forms a strongly distinct clade from other CC8 genomes. Indeed, the branch length distances between ST72 (SCC*mecIV* and SCC*mecVI*) and the CC8 genomes were higher than between the genomes of the CC96 and the CC8, suggesting that the ST72 clone should be included in a new and independent clonal complex. More studies are needed to perform a deeper characterization of the new emerging clone ST72-SCC*mecVI* described herein.

Our study has limitations. First, our isolate collection was limited to one health care center, thus preventing us from extrapolating our results about the dynamics of MRSA clonal replacement to a country-wide or regional level. However, we expect our data to shed light on the molecular epidemiology of MRSA in Latin America and help future studies to compare the situation in other countries in the region. Second, we did not obtain access to the clinical metadata, hampering our ability to explore possible associations between specific MRSA lineages with clinical presentations and patient outcomes. Finally, although all MRSA isolates were obtained from hospitalized patients, our data did not allow us to accurately discriminate between hospital and community-acquired infections, which would have allowed us to better understand the role different MRSA lineages are playing in these clinical presentations. A more complete study including isolates from different geographic areas over a broad time frame with their associated clinical metadata will be helpful to obtain a better picture of the genomic landscape of the MRSA clonal dynamics in Latin America and its clinical implications.

In summary, we have characterized an atypical clonal replacement phenomenon, demonstrating the usefulness of WGS in the study of pathogens of a major public health problem such as MRSA. Although this study includes isolates only from a single health care center, it is the most robust and detailed study of the genomic epidemiology of MRSA conducted in the country to date. Additionally, this study highlights a cryptic clonal replacement phenomenon in which the ChC clone is gradually being replaced by several genetic lineages, a phenomenon that differs from that classically described for MRSA. The results obtained here will allow a better understanding of the clonal replacement phenomenon and update knowledge about MRSA clones. The work provided here provides a strong rationale for expanded studies at the national level with integrated clinical and genomic data to evaluate the policies and strategies for managing MRSA infections and reduce the impact of this pathogen on morbidity and mortality in the region.

## MATERIALS AND METHODS

**Collection of MRSA strains.** We included a total of 469 MRSA isolates collected between 2000 and 2016 in the Hospital Clínico UC-Christus in Santiago, Chile. All isolates were identified as *S. aureus* using MALDI-TOF (Bruker). Methicillin resistance was confirmed with a cefoxitin disk diffusion assay, following the recommendations of the Clinical and Laboratory Standards Institute (CLSI) (35). The *mecA* gene was detected by PCR assays as previously described (36).

**Whole-genome sequencing and genomic characterization.** Genomic DNA of all 469 isolates was purified with the DNeasy blood and tissue kit (Qiagen) from fresh cultures treated with lysostaphin for 30 min at 37°C. DNA concentration was determined by Qubit dsDNA HS assay on a Qubit 2.0 fluorometer (Thermo



Fisher Scientific). Genomic libraries were prepared with the NexteraXT DNA Sample Preparation Kit (Illumina) and WGS was performed using Illumina MiSeq and HiSeq instruments, generating paired reads of 150 or 300 nucleotides. The quality of the raw reads was determined by FASTQC v0.11.9 and MultiQC v1.10.1 (<https://www.bioinformatics.babraham.ac.uk/projects/fastqc/>) (37). Raw reads were trimmed with Trimmomatic v0.39; those reads exhibiting a Phred quality score < 30 were excluded (38). Finally, the genomes were *de novo* assembled with SPAdes v3.13.0 and the quality of the assemblies was evaluated with QUAST v5.0.2 (39, 40). *In silico* characterization of the ST and SCCmec types was performed using MLST v2.19.0 (<https://github.com/tseemann/mlst>) and staphopia-sccmec, respectively (41, 42). In addition, the presence of antimicrobial resistance genes, virulence factors, and genetic traits associated with resistance to heavy metals was assessed with ABRicate v1.0.1 (<https://github.com/tseemann/abricate>).

**Phylogenomic analyses.** Genomes were annotated with Prokka v1.14.5 and a multiple alignment with a core-genome definition of 99% was performed with Roary v3.13.0 (43, 44). RAxML 8.2.12 was used to construct a maximum likelihood (ML) phylogenomic tree using a GTR Substitution Model with a bootstrap of 100 to then generate a recombination-free ML tree with ClonalFrameML v1.12 (45, 46). The phylogenomic trees were visualized with the Tree Of Life (iTOL) v6 interactive tool (47).

**Ecological diversity indices and statistical analysis.** Diversity indices were calculated using a custom script available on GitHub (<https://github.com/ahmedmagds/rarefaction-curves>) (48). Collectors (rarefaction) curves were based on MLST genotype, using resampling with replacement (100 iterations) for each subsampling with increasing intervals of 10 for each of 4 time periods according to their year of isolation to obtain a similar number of genomes in each period: 2000 to 2003, 2004 to 2008, 2009 to 2012, and 2013 to 2016. The normal distribution of the data was evaluated with the D'Agostino & Pearson normality test. The correlation between ST diversity and isolation year was determined by the Spearman ranked test.

**Data availability.** The genomes used in this study will be publicly available in the US National Center for Biotechnology Information in the Genome Sequence Archive under the accession number [PRJNA949606](https://www.ncbi.nlm.nih.gov/genome/ST/ST001/ST001001/ST001001001) after publication.

## SUPPLEMENTAL MATERIAL

Supplemental material is available online only.

**SUPPLEMENTAL FILE 1**, DOCX file, 0.6 MB.

## ACKNOWLEDGMENTS

We gratefully acknowledge the Departamento de Laboratorios Clínicos, Escuela de Medicina, Pontificia Universidad Católica de Chile for the isolates included in this study.

This work was supported by the research grants FONDECYT 1171805 and FONDECYT 1211947 to J.M.M. The computational infrastructure was provided by FONDEQUIP EQM150093. P.J.P. and A.M.M. are supported by NIH/NIAID grants R01AI137526-01. C.A.A. was supported by NIH/NIAID grants K24AI121296, R01AI134637, R01AI148342-01, and P01AI152999-01.

## REFERENCES

- World Health Organization. 2017. Prioritization of pathogens to guide discovery, research and development of new antibiotics for drug-resistant bacterial infections, including tuberculosis. World Health Organization, Geneva, Switzerland. <https://www.who.int/publications/i/item/WHO-EMP-IAU-2017.12>.
- Planet PJ, Narechania A, Chen L, Mathema B, Boundy S, Archer G, Kreiswirth B. 2017. Architecture of a species: phylogenomics of *Staphylococcus aureus*. *Trends Microbiol* 25:153–166. <https://doi.org/10.1016/j.tim.2016.09.009>.
- Chambers HF, Deleo FR. 2009. Waves of resistance: *Staphylococcus aureus* in the antibiotic era. *Nat Rev Microbiol* 7:629–41.
- Edslev SM, Westh H, Andersen PS, Skov R, Kobayashi N, Bartels MD, Vandenesch F, Petersen A, Worning P, Larsen AR, Stegger M. 2018. Identification of a PVL-negative SCCmec-IVa sublineage of the methicillin-resistant *Staphylococcus aureus* CC80 lineage: understanding the clonal origin of CA-MRSA. *Clin Microbiol Infect* 24:273–278. Available from <https://www.sciencedirect.com/science/article/pii/S1198743X17303464?via%3DIihub>. <https://doi.org/10.1016/j.cmi.2017.06.022>.
- Enger H, Larssen KW, Damås ES, Aamot HV, Blomfeldt A, Elstrøm P, Ås CG. 2022. A tale of two STs: molecular and clinical epidemiology of MRSA t304 in Norway 2008–2016. *Eur J Clin Microbiol Infect Dis* 41:209–218. Available from <https://pubmed.ncbi.nlm.nih.gov/34687359/>. <https://doi.org/10.1007/s10096-021-04353-9>.
- Medina G, Egea AL, Otth C, Otth L, Fernández H, Bocco JL, Wilson M, Sola C. 2013. Molecular epidemiology of hospital-onset methicillin-resistant *Staphylococcus aureus* infections in Southern Chile. *Eur J Clin Microbiol Infect Dis* 32:1533–1540. Available from <http://www.ncbi.nlm.nih.gov/pubmed/23765159>. <https://doi.org/10.1007/s10096-013-1907-8>.
- Lakhundi S, Zhang K. Methicillin-resistant *Staphylococcus aureus*: molecular characterization, evolution, and epidemiology. 2018. [cited 2018 Sep 30]; Available from <http://cmr.asm.org/>.
- Kuhn G, Francioli P, Blanc DS. 2007. Double-locus sequence typing using *clfB* and *spa*, a fast and simple method for epidemiological typing of methicillin-resistant *Staphylococcus aureus*. *J Clin Microbiol* 45:54–62. <https://doi.org/10.1128/JCM.01457-06>.
- Park K-H, Greenwood-Quaintance KE, Uhl JR, Cunningham SA, Chia N, Jeraldo PR, Sampathkumar P, Nelson H, Patel R. 2017. Molecular epidemiology of *Staphylococcus aureus* bacteremia in a single large Minnesota medical center in 2015 as assessed using MLST, core genome MLST and *spa* typing. de Lencastre H, editor. *PLoS One* [Internet] 12:e0179003. Available from <https://dx.plos.org/10.1371/journal.pone.0179003>.
- Harmsen D, Claus H, Witte W, Rothgänger J, Claus H, Turnwald D, Vogel U. 2003. Typing of methicillin-resistant *Staphylococcus aureus* in a university hospital setting by using novel software for *spa* repeat determination and database management. *J Clin Microbiol* 41:5442–5448. <https://doi.org/10.1128/JCM.41.12.5442-5448.2003>.
- Planet PJ, LaRussa SJ, Dana A, Smith H, Xu A, Ryan C, Uhlemann A-C, Boundy S, Goldberg J, Narechania A, Kulkarni R, Ratner AJ, Geoghegan JA, Kolokotronis S-O, Prince A. 2013. Emergence of the epidemic methicillin-resistant *Staphylococcus aureus* strain USA300 coincides with horizontal transfer of the arginine catabolic mobile element and *speG*-mediated adaptations for survival on skin. *mBio* [Internet] 4:e00889-13–e00813. Available from <http://www.ncbi.nlm.nih.gov/pubmed/24345744>. <https://doi.org/10.1128/mBio.00889-13>.
- Copin R, Sause WE, Fulmer Y, Balasubramanian D, Dyzenhaus S, Ahmed JM, Kumar K, Lees J, Stachel A, Fisher JC, Drlica K, Phillips M, Weiser JN,

- Planet PJ, Uhlemann A-C, Altman DR, Sebra R, van Bakel H, Lighter J, Torres VJ, Shopsis B. 2019. Sequential evolution of virulence and resistance during clonal spread of community-acquired methicillin-resistant *Staphylococcus aureus*. *Proc Natl Acad Sci U S A* 116:1745–1754. Available from <http://www.ncbi.nlm.nih.gov/pubmed/30635416>. <https://doi.org/10.1073/pnas.1814265116>.
13. Brown TS, Narechania A, Walker JR, Planet PJ, Bifani PJ, Kolokotronis S-O, Kreiswirth BN, Mathema B. 2016. Genomic epidemiology of Lineage 4 *Mycobacterium tuberculosis* subpopulations in New York City and New Jersey, 1999–2009. *BMC Genomics* [Internet] 17:947. <https://doi.org/10.1186/s12864-016-3298-6>.
  14. Challagundla L, Reyes J, Rafiqullah I, Sordelli DO, Echaniz-Aviles G, Velazquez-Meza ME, Castillo-Ramírez S, Fittipaldi N, Feldgarden M, Chapman SB, Calderwood MS, Carvajal LP, Rincon S, Hanson B, Planet PJ, Arias CA, Diaz L, Robinson DA. 2018. Phylogenomic classification and the evolution of clonal complex 5 methicillin-resistant *Staphylococcus aureus* in the western hemisphere. *Front Microbiol* 9:1901. Available from <https://www.frontiersin.org/article/10.3389/fmicb.2018.01901/full>. <https://doi.org/10.3389/fmicb.2018.01901>.
  15. Challagundla L, Luo X, Tickler IA, Didelot X, Coleman DC, Shore AC, Coombs GW, Sordelli DO, Brown EL, Skov R, Larsen AR, Reyes J, Robledo IE, Vazquez GJ, Rivera R, Fey PD, Stevenson K, Wang S-H, Kreiswirth BN, Mediavilla JR, Arias CA, Planet PJ, Nolan RL, Tenover FC, Goering RV, Robinson DA. 2018. Range expansion and the origin of USA300 North American epidemic methicillin-resistant *Staphylococcus aureus*. *mBio* [Internet] 9. Available from <https://pubmed.ncbi.nlm.nih.gov/29295910/>. <https://doi.org/10.1128/mBio.02016-17>.
  16. Toleman MS, Reuter S, Jamrozik D, Wilson HJ, Blane B, Harrison EM, et al. 2019. Prospective genomic surveillance of methicillin-resistant *Staphylococcus aureus* (MRSA) associated with bloodstream infection, England, 1 October 2012 to 30 September 2013. *Euro Surveill* 24:1800215. <https://doi.org/10.2807/1560-7917.ES.2019.24.4.1800215>.
  17. Coll F, Raven KE, Knight GM, Blane B, Harrison EM, Leek D, Enoch DA, Brown NM, Parkhill J, Peacock SJ. 2020. Definition of a genetic relatedness cutoff to exclude recent transmission of methicillin-resistant *Staphylococcus aureus*: a genomic epidemiology analysis. *Lancet Microbe* 1:e328–e335. Available from <https://pubmed.ncbi.nlm.nih.gov/33313577/>. [https://doi.org/10.1016/S2666-5247\(20\)30149-X](https://doi.org/10.1016/S2666-5247(20)30149-X).
  18. Arias CA, Reyes J, Carvajal LP, Rincon S, Diaz L, Panesso D, Ibarra G, Rios R, Munita JM, Salles MJ, Alvarez-Moreno C, Labarca J, Garcia C, Luna CM, Mejia-Villatoro C, Zurita J, Guzman-Blanco M, Rodriguez-Noriega E, Narechania A, Rojas LJ, Planet PJ, Weinstock GM, Gotuzzo E, Seas C. 2017. A prospective cohort multicenter study of molecular epidemiology and phylogenomics of *Staphylococcus aureus* bacteremia in nine Latin American countries. *Antimicrob Agents Chemother* 61:e00816-17. <https://doi.org/10.1128/AAC.00816-17>.
  19. Aires De Sousa M, Miragaia M, Sanches IS, Avila S, Adamson I, Casagrande ST, Brandileone MC, Palacio R, Dell'Acqua L, Hortal M, Camou T, Rossi A, Velazquez-Meza ME, Echaniz-Aviles G, Solorzano-Santos F, Heitmann I, de Lencastre H. 2001. Three-year assessment of methicillin-resistant *Staphylococcus aureus* clones in Latin America from 1996 to 1998. *J Clin Microbiol* 39:2197–2205. <https://doi.org/10.1128/JCM.39.6.2197-2205.2001>.
  20. Rodríguez-Noriega E, Seas C. 2010. The changing pattern of methicillin-resistant *Staphylococcus aureus* clones in Latin America: implications for clinical practice in the region. *Braz J Infect Dis* 14 Suppl 2:S87–96. Available from <http://www.ncbi.nlm.nih.gov/pubmed/21180929>. <https://doi.org/10.1590/s1413-86702010000800004>.
  21. Rodríguez-Noriega E, Seas C, Guzmán-Blanco M, Mejía C, Alvarez C, Bavestrello L, Zurita J, Labarca J, Luna CM, Salles MJ, Gotuzzo E. 2010. Evolution of methicillin-resistant *Staphylococcus aureus* clones in Latin America. *Int J Infectious Diseases* 14:e560–e566. <https://doi.org/10.1016/j.ijid.2009.08.018>.
  22. Seas C, García C, Salles MJ, Labarca J, Luna C, Alvarez-Moreno C, Mejia-Villatoro C, Zurita J, Guzmán-Blanco M, Rodríguez-Noriega E, Reyes J, Arias CA, Carcamo C, Gotuzzo E, Latin America Working Group on Bacterial Resistance. 2018. *Staphylococcus aureus* bloodstream infections in Latin America: Results of a multinational prospective cohort study. *J Antimicrob Chemother* 73:212–222. Available from <https://pubmed.ncbi.nlm.nih.gov/29045648/>. <https://doi.org/10.1093/jac/dkx350>.
  23. Becker AP, Santos O, Castrucci FM, Dias C, D'Azevedo PA. 2012. First report of methicillin-resistant *Staphylococcus aureus* Cordobes/Chilean clone involved in nosocomial infections in Brazil. *Epidemiol Infect* 140:1372–1375. Available from <https://pubmed.ncbi.nlm.nih.gov/22008212/>. <https://doi.org/10.1017/S095026881100210X>.
  24. Cruz C, Moreno J, Renzoni A, Hidalgo M, Reyes J, Schrenzel J, Lew D, Castañeda E, Arias CA. 2005. Tracking methicillin-resistant *Staphylococcus aureus* clones in Colombian hospitals over 7 years (1996–2003): emergence of a new dominant clone. *Int J Antimicrob Agents* 26:457–462. Available from <https://pubmed.ncbi.nlm.nih.gov/16278073/>. <https://doi.org/10.1016/j.ijantimicag.2005.08.013>.
  25. Reyes J, Rincón S, Díaz L, Panesso D, Contreras GA, Zurita J, Carrillo C, Rizza A, Guzmán M, Adachi J, Chowdhury S, Murray BE, Arias CA. 2009. Dissemination of methicillin-resistant *Staphylococcus aureus* USA300 sequence type 8 lineage in Latin America. *Clin Infect Dis* 49:1861–1867. Available from <https://pubmed.ncbi.nlm.nih.gov/19911971/>. <https://doi.org/10.1086/648426>.
  26. Alberdi A, Gilbert MTP. 2019. A guide to the application of Hill numbers to DNA-based diversity analyses. *Mol Ecol Resour* 19:804–817. Available from <https://pubmed.ncbi.nlm.nih.gov/30947383/>. <https://doi.org/10.1111/1755-0998.13014>.
  27. Wang B, Xu Y, Zhao H, Wang X, Rao L, Guo Y, Yi X, Hu L, Chen S, Han L, Zhou J, Xiang G, Hu L, Chen L, Yu F. 2022. Methicillin-resistant *Staphylococcus aureus* in China: a multicentre longitudinal study and whole-genome sequencing. *Emerg Microbes Infect* 11:532–542. Available from <https://pubmed.ncbi.nlm.nih.gov/35060838/>. <https://doi.org/10.1080/22221751.2022.2032373>.
  28. Viana AS, Nunes Botelho AM, Moustafa AM, Boge CLK, Pires Ferreira AL, da Silva Carvalho MC, Guimarães MA, Costa BdSS, de Mattos MC, Maciel SP, Echevarria-Lima J, Narechania A, O'Brien K, Ryan C, Gerber JS, Carvalho BTF, Figueiredo AMS, Planet PJ. 2021. Multidrug-resistant methicillin-resistant *Staphylococcus aureus* associated with bacteremia and monocyte evasion, Rio de Janeiro, Brazil. *Emerg Infect Dis* 27:2825–2835. Available from <https://pubmed.ncbi.nlm.nih.gov/34670645/>. <https://doi.org/10.3201/eid2711.210097>.
  29. Zhou W, Jin Y, Zhou Y, Wang Y, Xiong L, Luo Q, Xiao Y. 2021. Comparative genomic analysis provides insights into the evolution and genetic diversity of community-genotype sequence type 72 *Staphylococcus aureus* isolates. *mSystems* [Internet] 6 Available from <https://pubmed.ncbi.nlm.nih.gov/34491085/>. <https://doi.org/10.1128/mSystems.00986-21>.
  30. Joo EJ, Choi JY, Chung DR, Song JH, Ko KS. 2016. Characteristics of the community-genotype sequence type 72 methicillin-resistant *Staphylococcus aureus* isolates that underlie their persistence in hospitals. *J Microbiol* 54:445–450. Available from <https://pubmed.ncbi.nlm.nih.gov/27225462/>. <https://doi.org/10.1007/s12275-016-6157-x>.
  31. Park K-H, Chung YP, Kim S-H, Lee S-O, Choi S-H, Lee MS, Jeong J-Y, Woo JH, Kim YS. 2015. Community-associated MRSA strain ST72-SCmecIV causing bloodstream infections: clinical outcomes and bacterial virulence factors. *J Antimicrob Chemother* 70:1185–1192. Available from <https://pubmed.ncbi.nlm.nih.gov/25433004/>. <https://doi.org/10.1093/jac/dku475>.
  32. Gergova R, Tsitou V-M, Dimov SG, Boyanova L, Mihova K, Strateva T, Gergova I, Markovska R. 2022. Molecular epidemiology, virulence and antimicrobial resistance of Bulgarian methicillin resistant *Staphylococcus aureus* isolates. *Acta Microbiol Immunol Hung* 69:193–200. Available from <https://pubmed.ncbi.nlm.nih.gov/35895526/>. <https://doi.org/10.1556/030.2022.01766>.
  33. Patel K, Godden SM, Royster EE, Crooker BA, Johnson TJ, Smith EA, Sreevatsan S. 2021. Prevalence, antibiotic resistance, virulence and genetic diversity of *Staphylococcus aureus* isolated from bulk tank milk samples of U.S. dairy herds. *BMC Genomics* 22:367. <https://doi.org/10.1186/s12864-021-07603-4>.
  34. Kim HJ, Choi Q, Kwon GC, Koo SH. 2020. Molecular epidemiology and virulence factors of methicillin-resistant *Staphylococcus aureus* isolated from patients with bacteremia. *J Clin Lab Anal* 34:e23077. <https://doi.org/10.1002/jcla.23077>.
  35. CLSI. Performance standards for antimicrobial susceptibility testing. 29th ed 2019.
  36. Zhang K, McClure JA, Elsayed S, Louie T, Conly JM. 2005. Novel multiplex PCR assay for characterization and concomitant subtyping of staphylococcal cassette chromosome mec types I to V in methicillin-resistant *Staphylococcus aureus*. *J Clin Microbiol* 43:5026–5033. Available from <http://www.ncbi.nlm.nih.gov/pubmed/16207957>. <https://doi.org/10.1128/JCM.43.10.5026-5033.2005>.
  37. Ewels P, Magnusson M, Lundin S, Käller M. 2016. MultiQC: summarize analysis results for multiple tools and samples in a single report. *Bioinformatics* [Internet] 32:3047–3048. Available from <https://academic.oup.com/bioinformatics/article/32/19/3047/2196507>. <https://doi.org/10.1093/bioinformatics/btw354>.
  38. Bolger AM, Lohse M, Usadel B. 2014. Trimmomatic: a flexible trimmer for Illumina sequence data. *Bioinformatics* 30:2114–2120. Available from <https://academic.oup.com/bioinformatics/article/30/15/2114/2390096>. <https://doi.org/10.1093/bioinformatics/btu170>.
  39. Bankevich A, Nurk S, Antipov D, Gurevich AA, Dvorkin M, Kulikov AS, Lesin VM, Nikolenko SI, Pham S, Pribelski AD, Pyshkin AV, Sirotkin AV,

- Vyahhi N, Tesler G, Alekseyev MA, Pevzner PA. 2012. SPAdes: a new genome assembly algorithm and its applications to single-cell sequencing. *J Comput Biol* 19:455–477. <https://doi.org/10.1089/cmb.2012.0021>.
40. Gurevich A, Saveliev V, Vyahhi N, Tesler G. 2013. QUAST: quality assessment tool for genome assemblies. *Bioinformatics* 29:1072–1075. Available from <https://pubmed.ncbi.nlm.nih.gov/23422339/>. <https://doi.org/10.1093/bioinformatics/btt086>.
41. GitHub—tseemann/mlst: Scan contig files against PubMLST typing schemes [Internet]. [cited 2021 Apr 13]. Available from <https://github.com/tseemann/mlst>.
42. Petit RA, Read TD. 2018. Staphylococcus aureus viewed from the perspective of 40,000+ genomes. *PeerJ* [Internet] 2018:e5261. Available from <https://peerj.com/articles/5261>.
43. Seemann T. 2014. Prokka: rapid prokaryotic genome annotation. *Bioinformatics* 30:2068–2069. Available from <https://pubmed.ncbi.nlm.nih.gov/24642063/>. <https://doi.org/10.1093/bioinformatics/btu153>.
44. Page AJ, Cummins CA, Hunt M, Wong VK, Reuter S, Holden MTG, Fookes M, Falush D, Keane JA, Parkhill J. 2015. Roary: rapid large-scale prokaryote pan genome analysis. *Bioinformatics* 31:3691–3693. <https://doi.org/10.1093/bioinformatics/btv421>.
45. Stamatakis A. 2014. RAxML version 8: a tool for phylogenetic analysis and post-analysis of large phylogenies. *Bioinformatics* 30:1312–1313. <https://doi.org/10.1093/bioinformatics/btu033>.
46. Didelot X, Wilson DJ. 2015. ClonalFrameML: efficient inference of recombination in whole bacterial genomes. *PLoS Comput Biol* 11:e1004041. <https://doi.org/10.1371/journal.pcbi.1004041>.
47. Letunic I, Bork P. 2021. Interactive Tree Of Life (iTOL) v5: an online tool for phylogenetic tree display and annotation. *Nucleic Acids Res* 49:W293–W296. Available from <https://academic.oup.com/nar/article/49/W1/W293/6246398>. <https://doi.org/10.1093/nar/gkab301>.
48. GitHub—ahmedmagds/rarefaction-curves [Internet]. [cited 2023 Apr 9]. Available from <https://github.com/ahmedmagds/rarefaction-curves>.