

2006

Program: 10th Biennial Symposium on Minorities, the Medically Underserved & Cancer. Celebrating 20 Years of Progress. Committed to Eliminating Disparities... the Journey Continues

Intercultural Cancer Council

Follow this and additional works at: https://digitalcommons.library.tmc.edu/info_promo



Part of the [Public Health Commons](#), and the [Social Justice Commons](#)

Recommended Citation

Intercultural Cancer Council, "Program: 10th Biennial Symposium on Minorities, the Medically Underserved & Cancer. Celebrating 20 Years of Progress. Committed to Eliminating Disparities... the Journey Continues" (2006). *Informational and Promotional Materials*. 2.
https://digitalcommons.library.tmc.edu/info_promo/2

This Article is brought to you for free and open access by the Intercultural Cancer Council Records at DigitalCommons@TMC. It has been accepted for inclusion in Informational and Promotional Materials by an authorized administrator of DigitalCommons@TMC. For more information, please contact digcommons@library.tmc.edu.



Celebrating 20 Years of Progress

Intercultural Cancer Council Presents



10th BIENNIAL SYMPOSIUM ON MINORITIES, THE MEDICALLY UNDERSERVED & **CANCER**

*Committed to Eliminating Disparities...
The Journey Continues*

Jointly Sponsored by
Baylor College of Medicine
Houston, Texas

APRIL 19-23, 2006

Omni Shoreham Hotel • Washington, DC

FINAL PROGRAM

10TH BIENNIAL SYMPOSIUM ON MINORITIES, THE MEDICALLY UNDERSERVED & CANCER

April 19-23, 2006 • OMNI Shoreham Hotel • Washington, DC

EXECUTIVE COMMITTEE MEMBERS

Stephen P. Jiang, ACSW

ICC Chair
American Cancer Society, California Division

Pamela K. Brown, MPA

ICC Chair-Elect
Mary Babb Randolph Cancer Center

Barbara Sapp-Davis, RN, BSN, CNOR

Secretary
NAAACP

Pamela Bennett, RN BSN

Treasurer
Purdue Pharma LP

Linda Burhansstipanov, MSPH, DrPH, CHES

Member-at-Large Representative
Native American Cancer Research

Jennie R. Cook

President, ICC Caucus
American Cancer Society

Venus Ginés, MA

Member-at-Large
Dia de la Mujer Latina, Inc.

Alexine Clement Jackson

ICC Immediate Past Chair

Lovell A. Jones, PhD

Co-Founder and Past Chair
UT MD Anderson Cancer Center

Armin D. Weinberg, PhD

Co-Founder and Past Chair
Baylor College of Medicine

Evaon C. Wong-Kim, LCSW, MPH, PhD

Member-at-Large Representative
California State University, East Bay

ICC GOVERNING BOARD MEMBERS

Carolyn R. Aldigé (Bo)

Cancer Research and Prevention Foundation

Mavis Alleyne

People Living Through Cancer

John E. Arradondo, MD, MPH, FAAFP

Volunteer State Medical Association

Dileep G. Bal, MD, MS, MPH

Hawaii Department of Health

Mary Bennett, MFA

American Pain Foundation

Michael Bird, MSW, MPH

Past President, APHA

Otis W. Brawley, MD

Emory University

Doris Browne, MD, MPH (Col. Ret.)

Browne and Associates, Inc.

Betsy Clark, PhD, ACSW

National Association of Social Workers

Celeste Clark, PhD

Kellogg Company

Yvette Colón, MSW

American Pain Foundation

Bobbi de Córdova-Hanks

Bosom Buddies Founder

Gem P. Daus, MA

Asian & Pacific Islander American Health Forum

Ivis Febus-Sampayo

Latina Director, SHARE

Harold P. Freeman, MD

Ralph Lauren Cancer Center

Gilbert H. Friedell, MD

University of Kentucky

Harry R. Gibbs, MD

UT MD Anderson Cancer Center

Jeffrey J. Guidry, PhD

Texas A&M University

James W. Hampton, MD, FACP

ICC Past Chair

University of Oklahoma

Gayle Harper, MSW

UT MD Anderson Cancer Center

Jeffrey Henderson, MD, MPH

Black Hills Center for American Indian Health

Reginald C. S. Ho, MD

University of Hawaii

Thomas B. Horvath, MD, FRACP

The Michael E. DeBakey Veterans Affairs Medical Center

Elmer E. Huerta, MD, MPH

Washington Hospital Center

Sandra Hullett, MD, MPH

Cooper Green Hospital

Annie Mary Johnson, BSW

Survivor, Advocate

Marjorie Kagawa-Singer, PhD, MN, RN

UCLA School of Public Health

Cheryl Y. Kidd, MPH

The Susan G. Komen Breast Cancer Foundation

LaSalle D. Leffall, Jr., MD, FACS

Howard University Hospital

Anne Lanier, MD, MPH

Alaska Native Tribal Health Consortium

Ngina Lythcott, DrPH

Mailman School of Public Health, Columbia University

LaMar S. McGinnis, MD

American Cancer Society

Patricia Matthews-Juarez, PhD

Meharry Medical College

Helen C. McCarthy, RN, MPA, OCN

The Brooklyn Hospital Center

Selma J. Morris, MED

Grady Health System

Lynne Nguyen, MPH

UT MD Anderson Cancer Center

Neal A. Palafox, MD, MPH

University of Hawaii

Guadalupe Palos, RN, LSMW, DrPH

UT MD Anderson Cancer Center

Richard Payne, MD

Duke University Divinity School

Jody Pelusi, FNP, AOCN, PhD

US Oncology

James L. Phillips, MD

Baylor College of Medicine

Amelie G. Ramirez, DrPH

Baylor College of Medicine

Sylvia Ramos, MD, MS, FACS

People Living Through Cancer

Angel Rubio, MA

Appalachia Cancer Network

University of Kentucky Cancer Control Program

Susan M. Shinagawa

ICC Past Chair; Survivor/Advocate

Westley Sholes, MPA

National Association of Black County Officials

Monnie Singleton, MD

Family Practitioner

C. June Strickland, PhD, RN

University of Washington School of Nursing

Ciro Sumaya, MD, MPHMT

Texas A&M University

Frank Talamantes, PhD

Texas Tech Health Science Center

Patrice Tosi

The Susan G. Komen Breast Cancer Foundation

JoAnn U. Tsark, MPH

Papa Ola Lokahi, Hawaii

COL Ret. James E. Williams, Jr., MS, SPHR

Pennsylvania Prostate Cancer Coalition (PPCC)

ADVISORS & COLLABORATORS

Francis Ali-Osman, DSc

Duke University

Nina L. Agbayani, RN

Association of Asian Pacific Community Health Organizations

Ermilo Barrera, Jr., MD

Northwestern University Feinberg School of Medicine

Sharon Barrett

Cancer Advocate

Roxanna Bautista

Asian & Pacific Islander American Health Forum

Robert A. Beltran, MD, MBA

California Latino Medical Association

Paula E. Bowen

Kidney Cancer Association

Carolynn A. Bond, MBA

RE/MAX International, Inc.

Zora Brown

Breast Cancer Resource Committee, Inc.

Licy Do Canto

National Association of Community Health Centers

Deborah Collyar

UCSF Comprehensive Cancer Center

Nereida Correa, MD, MPH

Albert Einstein College of Medicine

J. Emilio Carrillo MD, MPH

Weill Cornell Medical Center, New York

Diana Contreras, MD

Long Island Jewish Medical Center

Nancy Davenport-Ennis

National Patient Advocate Foundation

Mark B. Dignan, MPH, PhD

University of Kentucky

Roselyn Payne Epps, MD, MPH, MA

Howard University

Lloyd K. Everson, MD

US Oncology, Inc.

Mona Fouad, PhD

University of Alabama at Birmingham

UAB School of Medicine

Tim Gilbert, MPH

Alaska Native Tribal Health Consortium

Patricia M. Golden, MPH

Advocate

Robert Goodwin

Points of Light Foundation

Suzanne A. Gronemeyer, PhD

St. Jude Children's Research Hospital

Anna Giuliano, PhD

H. Lee Moffitt Cancer Center and Research Institute

Winona Hollins-Hauge, MSW, CSW, LICSW

Fred Hutchinson Cancer Research Center

Hee-Soon Jung, RN, PhD

Johns Hopkins Bloomberg School of Public Health

Judith Salmon Kaur, MD

Mayo Clinic College of Medicine

Karen Orloff Kaplan, MPH, ScD

Wye River Group on Healthcare

Sharon R. Latson

Vitas Health Care Corporation

Rod Lew

Asian Pacific Partners for Empowerment and Leadership

APPEAL

Carol P. Marcusen, MSW, LCSW, BCD

USC/Norris Comprehensive Cancer Center and Hospital

Sherry Mills, MD, MPH

Abt Associates Inc.

Edith Mitchell, MD

Thomas Jefferson University

Ana M. Navarro, PhD

University of California, San Diego

Lisa A. Newman, MD, MPH, FACS

University of Michigan

Claudia Oglvie, MS

Advocate

Deborah Parra-Medina, PhD, MPH

University of South Carolina

Elizabeth A. Patterson, MD, FACP

National Medical Association

Frank J. Penedo, PhD

University of Miami

Barbara D. Powe, PhD, RN

American Cancer Society

Gloria Ramsey, JD, RN

USU Center for Health Disparities Research and Education

Karen Rezaei, MPH

Asian Pacific Partners for Empowerment

Advocacy and Leadership (APPEAL)

Nelson Robles, MD

Cancer Center in Puerto Rico

Instituto, San Pablo

Isabel Scarinci, PhD, MPH

University of Alabama at Birmingham

Eve Sánchez Silver

Cinta Latina Research LLC

Nathan Stinson, Jr., MD, PhD, MPH

Meharry Medical College

Crystal Swann

U.S. Conference of Mayors

Gregory A. Talavera, MD, MPH

San Diego State University

Hayley Thompson, PhD

Mount Sinai School of Medicine

Ho L. Tran, MD, MPH

Asian & Pacific Islander American Health Forum

Doug Wagner, MSW, LCSW

Cancer Information Service, MidSouth

Fern Jureidini Web, PhD

University of Florida

Laura A. Williams, MD, MPH

Sacramento Urban Indian Health

REGIONAL NETWORK LEADERSHIP

Mavis Alleyne

South West ICC Region

People Living Through Cancer

Jane Cotner, MS

South West ICC Region

University of New Mexico

Bobbi de Córdova-Hanks

Survivor, South East ICC Region

Bosom Buddies & Speakers for Life

Linda Fleisher, MPH

Mid Atlantic ICC Region

CIS/Atlantic Region

Carlos Gallego, BS, MEd

Mid West ICC Region

Asian American Press

Becky Hartt Minor, MA

Mid-Atlantic ICC Region

CIS/Atlantic Region

Pattie M. King, LPN

South West ICC Region

Gila River Indian Community

Selma Morris, MEd

South East ICC Region

Grady Health System

Frankie Denise Powell, PhD

North East ICC Region

Drexel University

Bonnie Wheatley, MPH, MA, EdD

West / Northwest ICC Region

Alameda County Medical Center

Neal A. Palafox, MD, MPH

Pacific Island ICC Region

University of Hawaii

Marta Sanchez, MPH

Puerto Rico ICC Region

CIS/Coastal Region

FEDERAL LIAISONS

Angela Bates, MBA

Office of Research on Women's Health, DHHS

Tamikio Bohler, MPA

Centers for Disease Control and Prevention

Kevin Brady, MPH

CDC Foundation

Mary Anne Bright

National Cancer Institute, CIS

Judit Camacho

Office of Diversity, NCI

Robert Croyle, PhD

Division of Cancer Control and Population Sciences, NCI

Kay Johnson Graham, PhD

National Institutes of Health

Paulette S. Gray, PhD

Division of Extramural Activities, NCI

James Hadley

Office of Liaison Activities, NCI</

Symposium Presenters



National Cancer Institute
(Grant # 1 R13 CA113028-01)

National Cancer Institute
National Human Genome
Research Institute
National Institute of General
Medical Sciences



CONTENTS

GENERAL INFORMATION

Symposium Welcome	2
Symposium Acknowledgements	7
Continuing Education	8
Symposium General Information	10
Symposium Faculty and Speakers	12
Symposium Committees and Chairs	15

PRE-SYMPOSIUM WORKSHOPS

PROFESSIONAL / ACADEMIC PROGRAM

Wednesday, April 19, 2006	22
Thursday, April 20, 2006	24
Friday, April 21, 2006	29
Saturday, April 22, 2006	36
Sunday, April 23, 2006	40

STUDENT MENTORING PROGRAM

Wednesday, April 19, 2006	41
Thursday, April 20, 2006	42
Friday, April 21, 2006	43
Saturday, April 22, 2006	44
Sunday, April 23, 2006	46

STUDENT PARTICIPANT LIST

SYMPOSIUM SPECIAL EVENTS/EXHIBITS

Breakfast Sessions	49-50
Herbert W. Nickens Memorial Lectureship Luncheon	51
Susan Matsuko Cancer Control Lectureship Award Luncheon	52
The HOPE and Height Awards Celebration	53
The Great American Poster Picnic	54
LaSalle D. Leffall, Jr. Awards Banquet & Gala	55
Exhibit Hall Booths	56

Symposium Welcome



HOUSE OF REPRESENTATIVES
WASHINGTON, D.C. 20515

ELEANOR HOLMES NORTON
DISTRICT OF COLUMBIA

April 19-23, 2006

GREETINGS

To

The Intercultural Cancer Council

I am pleased to extend greetings to everyone attending the Intercultural Cancer Council Governing Board's 10th Biennial Symposium on Minorities, the Medically Underserved and Cancer. I extend a special greeting to those visitors who have come to the nation's capital to participate in this gathering. I hope you will have an opportunity to visit some of the many historic monuments, cultural institutions and lively neighborhood attractions that make Washington, D.C. one of the world's greatest cities.

I commend for your efforts to address the health disparities among minorities and the medically underserved in your communities. Please accept my best wishes for an informative symposium. I wish you continued success in your important work.

Sincerely,

A handwritten signature in cursive script that reads "Eleanor H. Norton".

Eleanor Holmes Norton

Not printed or mailed at government expense.





Greetings

INTERCULTURAL CANCER COUNCIL

10TH BIENNIAL SYMPOSIUM

April 19 – 23, 2006

As Mayor of the District of Columbia, it is my pleasure to extend greetings and a warm welcome to the Intercultural Cancer Council, on the occasion of your 10th Biennial Symposium.



I would like to take this opportunity to commend the Intercultural Cancer Council for continuing to promote policies, programs, partnerships and research to eliminate the burden of cancer among racial and ethnic minorities, and medically underserved populations in the United States and associated territories. As you gather to reflect on your past accomplishments and prepare for the future, we look forward to your continued contributions that help to enhance the quality of life for others.

Washington, DC is a city with a long history of hospitality. I hope you will take the opportunity to visit some of our famous historical monuments, museums and many diverse and thriving neighborhoods—all of which make this city unique and our nation's capital.

On behalf of the residents of the District of Columbia, you have our best wishes for a successful and productive event.

Anthony A. Williams
Anthony A. Williams
Mayor, District of Columbia

Symposium Welcome

As Honorary Chair of the Intercultural Cancer Council's 10th Biennial Symposium on Minorities, the Medically Under-served and Cancer, I'm honored to welcome you to this landmark event and to thank you for your personal commitment to eliminating the unequal burdens of cancer among minorities and underserved populations.



As founder of the Susan G. Komen Breast Cancer Foundation, I have seen firsthand the needless suffering and loss of life that results when people are denied access to our health care system simply because of who they are, where they live, or how much they earn. As citizens of the wealthiest and most medically advanced nation in the world, we are challenged to reduce, and eventually eliminate, these terrible disparities.

As a breast cancer survivor myself, and a person who has spent more than half of my life as a patient advocate, I firmly believe in "the power of one" – that each of us, as individuals, can make a profound difference in advancing this cause. At the same time, those of us at Komen believe in "the dynamic force of many" – that standing together with a shared commitment to a shared mission, we truly can change the world.

On behalf of the entire Komen family – our 160 staff members and 75,000 volunteers – I extend our profound thanks and appreciation to the ICC for its tireless efforts to ensure that all Americans have access to world-class quality cancer care. We are proud to stand with you as partners in the promise I made to my sister, Susan G. Komen, more than 25 years ago – to do everything in our power to spare others the pain of cancer.

Thank you for dedicating yourself to this urgent mission. Working together, we can discover the causes of cancer and how to prevent it. Working together, we can ensure that every person and patient receives the care they deserve. Working together, we can make a difference.

Nancy Brinker

*Honorary Chair, ICC 10th Biennial Symposium
Founder, the Susan G. Komen Breast Cancer Foundation*

Dear ICC Family,

On behalf of the Governing Board of the Intercultural Cancer Council, I welcome you to the 10th Biennial Symposium on Minorities, the Medically Underserved & Cancer. For those of us involved with the ICC, producing the Biennial Symposium is one the activities which makes us especially proud of our organization. Since the Symposium series began in 1987, staff, board members and volunteers have worked passionately to make this the preeminent meeting for those who are committed to reducing the unequal burden of cancer in minority and medically underserved communities.



The ICC is much more than another group of professionals coming together to address an identified problem. The ICC is a family of individuals all personally and passionately committed to reducing the burden of cancer in our communities. The Biennial Symposium series has become as much a family reunion as a professional conference. Over the next five days, we come together as a family working together toward a common goal, support one another in our individual and collective efforts, and share knowledge and information so that we can all advance together.

Our family is a wonderful mix of cancer survivors, research scientists, health care professionals, and community advocates. In our family, we have the talents to achieve our vision of cancer prevention and survivorship. As with most families, we are an ever-growing group, and everyone who joins adds more to our collective abilities. I welcome you to our family where "Speaking with One Voice" has been our philosophy and key to our success.

We are so happy you have chosen to spend these next few days with us. We are confident that you will leave here with knowledge and tools to help in the effort to reduce the disproportionate burden of cancer among minorities and medically underserved. I hope you have a wonderful few days of fellowship and learning.

Stephen P. Jiang, ACSW

Chair, Intercultural Cancer Council

This year more than ever attending the ICC 10th Biennial Symposium on Minorities, the Medically Underserved & Cancer, feels like coming home. We have grown from a “wing and a prayer” into a force for societal awareness and change. And even during the past year, as devastating as it has been for so many, the ICC spirit prevails. So we come together once again to renew our commitment to eliminating cancer health disparities and our commitment to walking this rocky road together. Let’s celebrate how strong we are - - coming together from everywhere - - an island paradise, the land of the midnight sun, a red brick city, a rural coal town, a desert of cactus and gecko, a bayou memory.



Coming together to celebrate our victories, share our stories, and be proud of a decade of progress in facing down the specter of unnecessary pain, sickness, and death confronting our families and our communities; facing down the specter of intolerable indifference.

Coming together to celebrate being survivors who stand up and speak out. To celebrate survivorship.

Coming together to celebrate with our partners, old and new, to learn about scientific findings that may lead to new directions in prevention, early detection, and treatment; changes in policy that could ease the unequal burden of cancer; new education programs, services and resources available to communities; and to hear from gifted students who will be the stars of tomorrow’s medical breakthroughs.

Coming together to celebrate being members of the ICC Network, a family where everyone is respected and welcome.

Speaking with one voice, caring with one heart.

Welcome,

Pamela K. Brown, MPA
Chair, ICC 10th Biennial Symposium

When I began to envision a meeting that would involve everyone, I never envisioned that twenty years later we would be celebrating the 20th Anniversary of the Biennial Symposium Series on Minorities, the Medically Underserved & Cancer. We have come a long way since the first meeting in Houston in 1987! However, the 10th Biennial points to the fact that we still have a long way to go in our country in addressing the disproportionate impact of cancer and other diseases on minorities and the medically underserved.



As with the previous Symposia, this year’s conference continues to attract attendees and speakers from all corners of America, and now the world at large. It also continues to be the largest multicultural meeting in the nation addressing the unequal burden of cancer in America and its associated territories while also continuing to remain as a family affair. This week in April also marks the twentieth National Minority Cancer Awareness Week. It is, therefore, fitting that the Biennial returns this week to celebrate its anniversary as well. Having also given rise to the Intercultural Cancer Council, the nation’s largest multicultural health policy group, I continue to be proud of what has been accomplished by a small group of determined individuals.

With the changing demographics, America continues to be at a crossroads in determining the future health care initiatives for its people against a shortening time frame. Dr. Martin Luther King once said, “Our lives begin to end the day we become silent about things that matter.” Too many of us have become silent because of fears that are sometimes real. But change does not come without some risk. It, therefore, is my hope that the 10th Biennial Symposium will be a time of rededication to the principles that this meeting was founded on and a reenergizing of both old and new to again become the catalyst for change in order to close the health gaps that exist in this nation. To do this, you have to take that next step for change to occur. Gandhi once said that “if you want to change the world, be that change.” Change may not occur if you wait for others.

As Founder and Co-Course director, I again want to thank all of you for making THE HAPPENING a reality. As I approach the twilight of my years, for the THE HAPPENING to continue to thrive in creating a society in which the health of a person is not tied to the color of their skin and/or their socioeconomic status, I challenge you to step forward to take on the mantle of leadership and to continue to “Speak With One Voice.”

Lovell A. Jones, PhD
*Biennial Symposium Founder, 10th Biennial Symposium
Course Co-Director
Intercultural Cancer Council, Co-Founder and Past Chair*

Symposium Welcome

Welcome to the 10th Biennial Symposium on Minorities, the Medically Underserved & Cancer. Over the years, the symposium series has brought many of us to realize that while the meeting itself is important, it was what we do afterwards with the knowledge gained that makes a difference. Thus, it was not surprising that in 1995 the Biennial led to the creation of the Intercultural Cancer Council. The Intercultural Cancer Council has responded to the challenge of sustaining the momentum gained by our gathering every other year through its programs, partnerships and national network of individuals and organizations.



As in the past, this year's Biennial is attended by researchers, educators, survivors, community advocates, leaders of government agencies, non-profit health organizations and the private sector.

Here we bring together:

- people from rural communities and those from major metropolitan centers,
- people from academic research centers and those from community clinics and neighborhood centers,
- those who are survivors with those who have lost loved ones,
- those with insurance with those who have none,
- both young and old to pass on the history of our efforts,
- those from different racial and ethnic backgrounds to share the wonders of our differing cultures,
- those without access to quality cancer care with those who wish to provide it,
- small community based organizations with major national cancer organizations,
- federal agencies together with state, county and city agencies,

- leaders of the public sector with those from the private sector together, and
- those who serve with those they intend to serve.

Uniquely, the Biennial brings EXPECTATIONS. The Symposium provides a forum to share many exciting projects, programs and the results of what you are doing in your communities, organizations and agencies. You represent the front-line of our efforts to conquer cancer, where your actions at home will surely make a difference. This year we celebrate the anniversary of an event started more than twenty years ago by my colleague and friend Lovell A. Jones, Ph.D. It was a meeting where he recognized a major problem and converted it to an opportunity to do something about it, not just talk about it. You are here to carry on that tradition by showing your commitment to eliminating disparities.

Let us each make a commitment to return to our respective organizations and communities with the goal of making certain that disparities will not be ignored, marginalized, or deferred. Where resources are joined by a commitment to measure change. Let us continue to demonstrate that together we can make a difference.

As always, we encourage your full participation, sharing, challenging, and interacting throughout the next few days with all who have gathered. The ICC's Biennial brings you a palette of colors... the canvas is yours.

Armin D. Weinberg, PhD

*10th Biennial Symposium, Course Co-Director
Intercultural Cancer Council, Co-Founder and Past Chair*

Symposium Acknowledgements*

The ICC Executive Committee and Governing Board gratefully acknowledges the generous funding support of the various agencies, organizations, corporations, and foundations for the 10th Biennial Symposium on Minorities, the Medically Underserved & Cancer.

OUR PUBLIC PARTNERS

Centers for Disease Control and Prevention	National Institute of General Medical Sciences
Health Resources and Services Administration	National Cancer Institute's Cancer Information Service
National Institutes of Health	Office of Minority Health, DHHS
National Cancer Institute	The University of Texas M. D. Anderson Cancer Center
National Human Genome Research Institute	

OUR PRIVATE PARTNERS

American Association for Cancer Research	National Marrow Donor Program
American Cancer Society	Novartis Oncology
American Legacy Foundation	Ortho Biotech Oncology
Baylor College of Medicine	Pfizer Inc
Dan L. Duncan Cancer Center at Baylor College of Medicine	Purdue Pharma L.P.
Genentech, Inc.	Robert H. Lurie Comprehensive Cancer Center of Northwestern University
GlaxoSmithKline	Schering-Plough
Howard University Hospital	St. Jude Children's Research Hospital
Indiana University – HPER	The Mary Babb Randolph Cancer Center
Kellogg's Corporate Citizenship Fund	The Susan G. Komen Breast Cancer Foundation
Lance Armstrong Foundation	U S Oncology, Inc.

**The Symposium Acknowledgment List does not reflect additions made after March 30, 2006.*

We wish to thank the many agencies, organizations, corporations, and foundations for lending their financial support to our participants. It is through their generosity that many of the students and our community partners are able to attend the 10th Biennial Symposium.

We also acknowledge the dedication of the Symposium staff and volunteers in making this event possible.

MISSION STATEMENT

The Intercultural Cancer Council (ICC) promotes policies, programs, partnerships and research to eliminate the unequal burden of cancer among racial and ethnic minorities and medically underserved populations in the United States and its associated territories.

NEEDS

There is a disproportionate cancer incidence, morbidity, and mortality among minorities and persons of low socioeconomic status in the United States and its associated territories. Health disparities suffered by these groups have been documented through published reports. There is a critical need to develop knowledge and strategies to address this crisis with the leadership and full participation of the affected communities. The Biennial Symposium series on Minorities, the Medically Underserved & Cancer was initiated in 1987 to provide a multicultural forum for this purpose.

GOALS

The overall goals of the Biennial Symposium series are to:

- ◆ exchange the latest scientific and treatment information and to share strategies for reducing the disproportionate incidence of cancer morbidity and mortality among minorities and the medically underserved in the United States;
- ◆ increase the awareness and enhance the competence of health care providers, researchers, laypersons and survivors in the areas of primary and secondary cancer prevention, early detection and treatment; and
- ◆ promote culturally competent cancer care and services and ethnically balanced research, especially clinical trials.

The 5th Biennial Symposium (1995) addressed prevention and early detection, focusing on issues related to cultural diversity, public policy and survivorship. In addition to these topics, the 6th Biennial Symposium (1997) added a focus on cultural competency for all those involved and concerned with cancer among minority and medically underserved communities. The 7th Biennial Symposium (2000) addressed the unequal burden of cancer borne by these communities. The 8th Biennial Symposium (2002) highlighted the need to move from awareness of the issues to action in order to bring about change. The 9th Biennial Symposium (2004) reinforced the need to act.

OBJECTIVES

At the conclusion of the Symposium, participants should be able to:

- ◆ summarize the most current scientific information available about specific cancers of particular concern in minority and medically underserved communities, including the impact of certain health and lifestyle factors;
- ◆ discuss and demonstrate the importance and promotion of cancer prevention, early detection, timely and quality treatment, supportive and palliative care, and end of life issues;
- ◆ describe how to replicate and implement selected cancer control programs in minority and medically underserved communities;
- ◆ identify, obtain, and utilize culturally appropriate and relevant cancer educational materials;
- ◆ identify and access cancer information services; and
- ◆ identify and access national and local organizations engaged in cancer-related activities.

TARGET AUDIENCE

- ◆ Cancer survivors, specialists, family physicians, and scientists interested or involved in community-based cancer prevention and control programs for minorities and the medically underserved.
- ◆ Students from minority or medically underserved communities interested in a career in cancer research and health care.
- ◆ Community leaders, chaplains, business executives, educators, hospitals or clinic administrators, government or voluntary health agency program directors responsible for health promotion and disease prevention for persons who are at higher risk of cancer or other diseases due to economic, cultural, geographic, political, social, medical or other barriers.
- ◆ National or local advocates for cancer survivors and the medically underserved, elected, appointed, or career government officials, public or private opinion leaders involved in biomedical research and health care reform policy.
- ◆ Primary care, community or family physicians, oncologists, nurses, allied health professionals, health educators, dietitians, social workers or other persons involved in the cancer care continuum.

EDUCATIONAL METHODS

Educational methods include lectures, case presentations, panel discussions, program demonstrations, question and answer sessions, educational exhibits, and oral and poster presentations.

EVALUATION

A course evaluation form will provide participants with the opportunity to review each session and speaker, to identify future educational needs and to comment on any perceived commercial bias in the presentations. Exit surveys will be conducted to obtain feedback on organization, general content, workshops and exhibits, networking opportunities, and recommendations for the next Symposium. A post-Symposium survey will be used to assess changes in knowledge, attitudes, beliefs and behaviors and to what extent and how the information, materials and resources offered at the Symposium are being utilized by the attendees.

ACCREDITATION/CREDIT DESIGNATION

Social workers, Registered Dietitians and Dietetic Technicians, Registered, health educators, and oncology nurses interested in Continuing Education Units (CEUs) should go to the CEU Desk located near the Registration Area.

Continuing education hours for social workers have been applied for with the National Association of Social Workers.

Continuing education hours for Registered Dietitians and Dietetic Technicians, Registered have been applied for with the Commission on Dietetic Registration.

Continuing education hours for health educators have been applied for with the American Association for Health Education.

Continuing education units for oncology nurses have been applied for with the Oncology Nursing Society/Oncology Education Services.

INSTRUCTIONS FOR RECEIVING CONTINUING EDUCATION CREDIT

If you desire Continuing Education Credits for attending the Symposium, please be sure to comply with the following instructions:

1. Obtain the appropriate CEU program participation form for your profession at the CEU Desk located at the Registration Area.
2. Each day you are in attendance, sign in with your respective profession's representative at the CEU Desk, if your professional requirements make this a condition of receiving credits.
3. At the end of the Symposium, or when you leave, turn in the following: (a) a completed CEU program participation form and, (b) your completed evaluation forms. This is MANDATORY. You must turn in both forms for your continuing education credit(s) to be processed.

PUBLICATIONS

The proceedings of the Symposium will be published in an appropriate medical journal. The Intercultural Cancer Council will publish a public document focusing on findings and recommendations resulting from the Symposium. Audio or videotaping is prohibited without written permission from the Course Directors.

DISCLOSURE STATEMENT OF RELATIONSHIP

It is the policy of Baylor College of Medicine that the provider and faculty disclose the existence of any significant financial or other relationships with companies whose products or services may be discussed in the activity; e. g. research grant support, consultancies. Specific disclosures will be made to the participants prior to the educational activity.

Faculty, topics, program schedule, and credit hours are subject to change.

Symposium General Information

NAME BADGES

Name badges MUST be worn at all times for admission into exhibits, meetings, all meal functions, receptions, the poster picnic and the banquet. All meals and receptions are included as part of the registration fee.

NON-REGISTERED PARTICIPANT MEALS

If you are bringing a guest to a meal function, please purchase guest tickets at the Symposium Registration Center 24 hours in advance of the function. Guest badges will be issued and must be worn to the meal function to obtain service. Ticket prices are as follows:

All Luncheons \$ 50.00/day/person
All Breakfasts \$ 30.00/day/person

Suvivor and Founders' Award Reception

(Wednesday Evening, April 19) \$ 50.00/person

HOPE & Height Awards Reception and Celebration

(Friday Evening, April 21) \$ 75.00/person

Great American Poster Picnic

(Saturday Mid-Day, April 22) \$ 30.00/person

LaSalle D. Leffall, Jr. Awards Reception & Banquet

(Saturday Evening, April 22) \$150.00/person

REGISTRATION CENTER – Omni Shoreham Hotel

West Conference Registration Desk

Hours of Operation:

Tuesday, April 18	5:00 PM – 8:00 PM
Wednesday, April 19	7:00 AM – 7:00 PM
Thursday, April 20	7:00 AM – 7:00 PM
Friday, April 21	7:00 AM – 6:00 PM
Saturday, April 22	7:00 AM – 1:00 PM

MESSAGE CENTER – Omni Shoreham Hotel

Messages will be posted on the Bulletin Board located near the West Conference Registration Area.

For phone messages between 7:00 AM-5:00 PM, Wednesday, April 19 through Saturday, April 22, and 7:00 AM – 1:00 PM, Sunday, April 23, please call the Hotel main number at 202/234-0700 and ask for the West Conference Registration Desk.

The concierge desk of the Hotel is available to assist Symposium participants. It is located in the Main Lobby of the Hotel. It will be staffed during peak hours, please feel free to allow the knowledgeable and helpful staff to assist you. The telephone number for the Omni Shoreham Hotel is 202/234-0700. Ask for the ICC 10th Biennial Symposium Registration Desk. The guest facsimile number is 202/265-7972.

CANCER EDUCATION RESOURCES PROGRAM

The Cancer Education Resources Program includes educational exhibits, program demonstration and technical assistance workshops. For workshop details, please refer to Abstract, Scientific Oral Presentations and Workshops brochure in your Symposium information package.

EXHIBITS

BLUE PRE-FUNCTION ROOM

Thursday, April 20	8:30 AM – 12:45 PM 2:00 PM – 6:00 PM
Friday, April 21	8:30 AM – 12:45 PM 2:30 PM – 5:30 PM
Saturday, April 22	8:30 AM – 1:00 PM

Cancer Education Resource Program Workshops

Concurrent

Thursday, April 20	4:45 PM – 5:45 PM
Friday, April 21	3:00 PM – 4:30 PM

Cancer Education Resource Program Workshops

Concurrent

Friday, April 21	4:45 PM – 5:45 PM
------------------	-------------------

GREAT AMERICAN POSTER PICNIC

Saturday, April 22	1:00 PM – 3:30 PM
--------------------	-------------------

Regency Ballroom

Poster boards will be available for set-up in the Regency Ballroom after 11:00 AM on Saturday, April 22. All materials must be removed immediately after the session. Any materials remaining on the poster boards will be discarded. You must provide your own Velcro; no push pins. Please check in with the Registration Desk if you require assistance.

MEDIA REPRESENTATIVES

All press should register at the Symposium Registration Desk, West Conference Foyer to obtain a badge.

FROSCH INTERNATIONAL TRAVEL DESK

West Conference Registration Desk & Lobby Area

Friday, April 21	2:00 PM – 6:00 PM
Saturday, April 22	9:00 AM – 6:00 PM
Sunday, April 23	9:00 AM – 1:00 PM

Richard Chisenhall from Frosch International Travel is available at the Symposium Travel Desk located adjacent to the Symposium Registration Desk. Please let him assist you with your travel needs.

SPECIAL ASSISTANCE

In compliance with the Americans with Disabilities Act, Baylor College of Medicine and the Omni Shoreham Hotel, will make every reasonable effort to accommodate persons with disabilities at the meeting.

NON-SMOKING AREAS

THANK YOU FOR NOT SMOKING IN ANY OF THE MEETING ROOMS, MEETING ROOM FOYERS, MEAL FUNCTIONS OR REGISTRATION AREAS.

Symposium Faculty and Speakers

HONORARY SYMPOSIUM CHAIR

Nancy G. Brinker
Founder
The Susan G. Komen Breast Cancer Foundation

SYMPOSIUM CHAIR

Pamela K. Brown, MPA
ICC Chair-Elect
Director for Prevention and Control
Mary Babb Randolph Cancer Center
R.C. Byrd Health Sciences Center
West Virginia University

SYMPOSIUM FOUNDER AND COURSE CO-DIRECTORS

Lovell Jones, PhD
Professor and Director
Center for Research on
Minority Health
UT MD Anderson Cancer Center

Armin D. Weinberg, PhD
Professor and Director
Chronic Disease Prevention and Control
Research Center
Baylor College of Medicine

ICC CHAIR

Stephen P. Jiang, ACSW
American Cancer Society
California Division

FACULTY AND SPEAKERS

Neyal J. Ammary
Author
Canyon Beach Visual Communications

Dileep G. Bal, MD, MPH
District Health Officer
Hawaii Health Department

Lodovico Balducci, MD
University of South Florida
H. Lee Moffitt Cancer Center

Ermilo Barrera, Jr., MD
Surgical Oncologist
Northwestern University Feinberg School
of Medicine
American Cancer Society
National Board of Directors

Roshan Bastani, PhD
Professor and Associate Dean for Research
UCLA School of Public Health

Mary Bennett, MFA
American Pain Foundation

Lynn Bemis, PhD, MPH
University of Colorado Health Science Center

Pamela Bennett, RN, BSN
Director of Advocacy
Purdue Pharma L.P.

Lori Belle-Isle, MPH
American Cancer Society
National Home Office

Clement Bezold, PhD
President
Institute of Alternative Futures

Steve Bognar
"A Lion in the House"

Mary Anne Bright
Director of the Cancer Information Service
National Cancer Institute

Doris Browne, MD, MPH (Col. Ret.)
President & CEO
Browne and Associate, Inc.

Linda Burhansstipanov, MSPH, DrPH, CHES
Executive Director
Native American Cancer Research

Daniel Bustillos, JD, PhD
ICC Research Fellow
Baylor College of Medicine

Katora P. Campbell, MPH
Partners for a Healthy Community-Caring
Communities Project
Clemson University

Betsy Clark, PhD, MSW
Executive Director
National Association of Social Workers

Fran Castellow, MEd
COO
National Patient Advocate Foundation

Ming-Der Chand, PhD
Chinese Breast Cancer Patient Support Group
American Cancer Society, NY

David A. Chatel
Acting Director of Patient Advocacy
Centers for Medicare & Medicaid Services
(CMS)

Margaret A. Chesney, PhD
Office of Complementary and
Alternative Medicine
National Cancer Institute

Veronica Chollette, RN, MS
Division of Cancer Control and
Population Sciences
National Cancer Institute

Donald S. Coffey, PhD
Johns Hopkins University, School of Medicine

Robert L. Comis, MD
President and Chairman
Coalition of National Cancer
Cooperative Groups

Jennie R. Cook
President, ICC Caucus
Past Chairman, National Board of Directors
American Cancer Society

Nancy Davenport-Ennis
President & CEO
National Patient Advocate Foundation

Barbara Sapp Davis, RN, BSN, CNOR
Member, National Board of Directors
National Association for the Advancement of
Colored People

Christine DeCourtney, MPA
Alaska Native Tribal Health Consortium

Bobbi de Córdova-Hanks
Survivor
Founder, Bosom Buddies &
Speakers for Life

Lucy De Los Santos
Yakama Survivor

Mark Dignan, PhD
Professor, Markey Cancer Center
University of Kentucky

Joyce Dolbec, MA
YWCA-Northern Rhode Island

Angelina Esparaza, RN
American Cancer Society
National Home Office

Paula A. Espinoza, PhD
University of Colorado

Lloyd K. Everson, MD
Vice Chairman
US Oncology, Inc.

Harmon Eyre, MD
American Cancer Society
National Home Office

Ivis Febus-Sampayo
Latina Director, SHARE

Susan Foerster, MPH, RD
Cancer Prevention, Physical Activity, Diet and
Cancer Program
California Department of Health Sciences

Sarah Fox, PhD
Professor and Director
Center for Community Partnerships in
Health Promotion
University of California

Harold P. Freeman, MD
Medical Director and COO
Ralph Lauren Center for Cancer Care
and Prevention

Gilbert Friedell, MD
Director Emeritus
Markey Cancer Center
University of Kentucky

Ted Gansler, MD
American Cancer Society
National Home Office

Roland Garcia, PhD
National Cancer Institute

Harry R. Gibbs, MD
Vice President, Institutional Diversity
UT MD Anderson Cancer Center

Venus Ginés, MA
CEO/Founder, Dia de la Mujer Latina, Inc.

Leslie Given, MPA
National Comprehensive Cancer
Control Program
Center for Disease Control and Prevention

Rita C. Gondocs, MPH
American Cancer Society
North Shore Evanston, IL

Beverly Gor, EdD, RD
Center for Research on Minority Health
UT MD Anderson Cancer Center

Garth Ghaham, MD, MPH
Director
Office of Minority Health, DHHS

Amanda Greene, PhD, MPH, RN
NOVA Research Company

Rick Hajek, PhD
Instructor
UT MD Anderson Cancer Center

Lisa Harjo, MPH
Native American Cancer Research

Hilda R. Heady, MSW
Immediate Past President
National Rural Health Association

Ronald B. Herberman, MD
University of Pittsburgh Cancer Institute

Reginald C. S. HO, MD
Asian American Network for Cancer Awareness
Research and Training (AANCART)

Susan K. Hoppough, PhD, RN
Saint Mary's Health Care

Thomas B. Horvath, MD, FRACP
Chief of Staff
The Michael E. DeBakey Veterans Affairs
Medical Center

Elmer E. Huerta, MD, MPH
Director
Cancer Preventorium
Washington Cancer Institute at Washington
Hospital Center

Nicholas K. Iammarino, PhD, CHES
Professor of Health Sciences
Rice University

Alexine Clement Jackson
Immediate Past Chair
Intercultural Cancer Council

Pamela M. Jackson, MS
Director of Outreach Programs &
ICC National Network
Intercultural Cancer Council
Baylor College of Medicine

Diana D. Jeffery, PhD
Office of Cancer Survivorship
National Cancer Institute

Joshua Jones, MD
Northwest Portland Area Indian Health Board

Marjorie Kagawa-Singer, PhD, MN, RN
Asian American Studies
UCLA School of Public Health

Judith Salmon Kaur, MD
Mayo Clinic College of Medicine

Kimberly Kelly, PhD, MS
Clinical Cancer Genetic Program
Ohio State University Comprehensive Cancer
Center

Jon F. Kerner, PhD
Dissemination and Diffusion Population
Sciences
National Cancer Institute

Cheryl Y. Kidd, MPH
Director of Education
The Susan G. Komen Breast Cancer Foundation

Holly L. Kiger, RN, MN
Center for Healthy Aging, CA

Pattie M. King, LPN
Gila River Indian Community
Hu Hu Kam Memorial Hospital

Dineo Khabele, MD
Director, Gynecologic Oncology and Women's
Cancer Research Laboratory
Meharry Medical College

Amy Larrick
Centers for Medicare & Medicaid Services (CMS)

Sharon R. Latson
Vitas Health Care Corporation

Larry Laufman, EdD
Dept. of Medicine
Baylor College of Medicine

LaSalle D. Leffall, Jr., MD, FACS
Chair, C-Change
Chair, President's Cancer Panel
Charles R. Drew Professor of Surgery
Howard University Hospital

Nancy Liao
Chinese Breast Cancer Patient Support Group
American Cancer Society, NY

Maureen Y. Lichtveld, MD, MPH
C-Change
Professor
Tulane University School of Public Health

Stephen C. Lloyd, MD, PhD
Caroline Community Based Health
Support Network
Columbia, South Carolina

Lee Mann, PhD, JD
Scientific Review Administrator
National Institutes of Health

Patricia Matthews-Juarez, PhD
Associate Dean, Faculty Affairs and
Development
Meharry Medical College

John Mendelsohn, MD
President
UT MD Anderson Cancer Center

Helen McCarthy, RN, MPA, OCN
Consultant, Cancer Communications
The Brooklyn Hospital Center

Christine Merenda, BSN, RN, OCN
Yakama Indian Health Center

Margo Michaels, MPH
Education Network to Advance Cancer
Clinical Trials (ENACCT)

Andy Miller, MHSE, CHES
Lance Armstrong Foundation

Judith Muller
Comprehensive Cancer Program Coordinator
Alaska Native Tribal health Consortium

Claire Neal, MPH, CHES
Lance Armstrong Foundation

Lisa Newman, MD, MPH, FACS
Director, Breast Care Center
Associate Professor of Surgery
University of Michigan

Bang Nguyen, PhD
Research Scientist
Northern California Cancer Center

Symposium Faculty and Speakers

Antonia C. Novello, MD, DrPH, MPH
Former US Surgeon General
Commissioner of Health State of New York

Guadalupe Palos, RN, LSMW, DrPH
Instructor, Clinical Research Faculty
Department of Symptom Research
UT MD Anderson Cancer Center

Richard Payne, MD
Director
Duke Institute for Care at the End of Life
Duke University Divinity School

Amari Sokoya Pearson-Field, MPH, PhDc
Mautner Project, Washington, DC

Kevin Sweet, MS, CGC
Ohio State University Comprehensive Cancer
Center
Clinical Cancer Genetic Program

Jody Pelusi, FNP, AOCN, PhD
US Oncology

James L. Phillips, MD
Senior Associate Dean
Professor of Pediatrics
Baylor College of Medicine

Joe T. Porter
Chairman of the Board
Enterprise National Bank
American Cancer Society

Amelie Ramiez, DrPH
Professor
Deputy Director, Chronic Disease Prevention
and Control Research Center
Baylor College of Medicine

Katrina Ramsey, BA
Northwest Portland Area India Health Board

Eddie Reed, MD
Director
Division of Cancer Prevention and Control
Centers for Disease Control and Prevention

Elda Railey
Research Advocacy Network

Julia Reichert
"A Lion in the House"

Marian A. Robinson, MSN
Partners for a Healthy Community-Caring
Communities Project
Clemson University

Lindsay Rodgers, BA, RD, LD
University of Texas at Austin

Rochelle Rollins, PhD, MPH
Special Assistant to Deputy Director
National Cancer Institute

Angel Rubio, MA
Appalachia Cancer Network
University of Kentucky

Bob J. Samuels
Florida Prostate Cancer Network

Eduardo J. Sanchez, MD, MPH
Commissioner
Texas Department of State Health Services

Martha Burton Santibanez
National Marrow Donor Program

Mary Jackson Scroggins
Ovarian Cancer Support Group

Kathleen Scura, EDD, RN
William Paterson University

Tina Shih, PhD
UT MD Anderson Cancer Center

Susan Matsuko Shinagawa
Survivor / Advocate

Jay L. Silver
Executive Director
Intercultural Cancer Council
Baylor College of Medicine

Mary Lou Smith
Research Advocacy Network

Kurt Snipes, PhD
California Department of Health Services
Cancer Control Services Branch

Felicia Solomon, MPH
National Cancer Institute

Sanya A. Springfield, PhD
National Cancer Institute

Judith Starkey
Chamberlain Edmonds, Inc.

Carla Storm, MLA
UT MD Anderson Cancer Center

Eric R. Sue, BS
Asian Liver Center at Sanford University

The Honorable Louis Sullivan, MD
Former Secretary of Health and Human
Services

Frank Talamantes, PhD
Assistant Dean for Research Development
Texas Tech Health Science Center

Molly Tanner, BS
National Patient Advocate Foundation

Captain Lauren Tancona, BSN
Tribal Liaison
Centers for Disease Control and Prevention

Adolphus P. Toliver, PhD
Minority Access to Research Careers
National Institute of General Medical Sciences,
NIH

Patricia A. Valverde, MPH
University of Colorado

Robert Washington, PhD
Chaplin, Clinical Medical Ethicist
Montgomery Hospice

Eugene Wheeler
US TOO, International

Adrienne White, MPA, CHES
American Cancer Society, Chicago, Illinois

COL (ret) James E. Williams, Jr. MS. SPHR
Pennsylvania Prostate Cancer Coalition

Jerome Wilson, PhD
National Center on Minority Health and Health
Disparities, NIH

Honorable Bob Wise
Former Governor, West Virginia
Alliance for Excellent Education

Joy Workman, MSW
Education Network to Advance Cancer Clinical
Trials (ENACCT)

Evaon C. Wong-Kim, LCSW, MPH, PhD
Department of Social Work
California State University, East Bay

Sara Zeigler, MPH
Public Health Advisor
Centers for Disease Control and Prevention

Symposium Committees and Chairs

PROGRAM COMMITTEE

Lovell Jones, PhD, Co-Course Director
Armin Weinberg, PhD, Co-Course Director
Pamela K. Brown, MPA, Symposium Chair
Linda Burhansstipanov, MSPH, PhD, CHES
Monique DeLynn
Pamela M. Jackson, MS
Stephen Jiang, ACSW
Jay Silver

SYMPOSIUM PLANNING COMMITTEE

Pamela Brown, MPA, Chair
Linda Burhansstipanov, MSPH, Dr.PH,
CHES, Vice Chair

PLANNING COMMITTEE

EXECUTIVE BOARD

Pamela Bennett, RN, BSN
Jennie Cook
Barbara Sapp Davis, RN, BSN, CNOR
Venus Gines, MA
Alexine C. Jackson
Stephen Jiang, ACSW
Larry Laufman, EdD
James Phillips, MD
Col Ret. James E. Williams, Jr., MS, SPHR
Evaon Wong-Kim, LCSW, MPH, PhD

SPECIAL ADVISORS TO PLANNING COMMITTEE

Bruce Black, PhD
Kevin Brady, MPH
Mary Anne Bright
Lloyd Everson, MD
Betty Lee Hawks, MA
Diana Jeffery, PhD
David Wetter, PhD

FINANCE COMMITTEE

Stephen Jiang, ACSW, Co-Chair
Patricia Tosi, Co-Chair
Pamela Bennett, RN, BSN
LaMar McGinnis, MD
Barbara Sapp Davis, RN, BSN, CNOR
Jay Silver

PUBLIC RELATIONS COMMITTEE

Susan Shinagawa, Co-Chair
Rebecca Novak-Tippitt, Co-Chair
Mary Bennett, MFA
Pamela Bennett, RN, BSN
Jennie Cook
Ivis Febus-Sampayo
Winona Hollins-Hauge, MSW, CSW, LICSW
Nancy Glick
Diana Jeffery, PhD
Patricia Matthews-Juarez, PhD

Jay Silver
Gail Woods Waller, MS

OPENING CEREMONY COMMITTEE

Doris Browne, MD, Co-Chair
Patricia Matthews-Juarez, Vice-Chair
Col Ret. James E. Williams, Jr., MS, SPHR
Jennie Cook

SURVIVORS COMMITTEE

Col Ret. James E. Williams, Jr., MS, SPHR,
Chair
Ivis Febus-Sampayo, Vice Chair
Zora Brown
Jennie Cook
Bobbi de Cordova-Hanks
Gilbert Friedell, MD
Venus Gines, MA (Consultant to Chair)
Diana Jeffery, PhD
Anna Marie Johnson
Cheryl Kidd, MPH
Helen McCarthy, RN, MPA, OCN
Jody Pelusi, FNP, AOCN, PhD
Wes Sholes, MPA
Cece Whitewolf

PUBLIC POLICY COMMITTEE

Jennie Cook, Chair
Col Ret. James E. Williams, Jr., MS, SPHR,
Co-Chair
John Arradando, MD, MPH, FAAFP
Pamela Bennett, RN, BSN
Gem Daus, MA
Venus Gines, MS
Sandra Hullett, MD, MPH
Jody Pelusi, FNP, AOCN, PhD
Evaon Wong-Kim, PhD, LCSW, MPH

PROFESSIONAL/GRADUATE ABSTRACT COMMITTEE

Richard Hajek, PhD, Chair

CANCER EDUCATION RESOURCES PROGRAM AND ABSTRACT REVIEW COMMITTEE

Evaon Wong-Kim, PhD, LCSW, MPH,
Co-Chair
Yvette Colon, MSW, Co-Chair
Cheryl Kidd, MPH
Rick Hajek, PhD

EXHIBITS COMMITTEE

Cary Booker
Monique DeLynn
Pat Fuchs, RD, LD

PRE-SYMPOSIUM WORKSHOP COMMITTEE

Helen McCarthy, RN, MPA, OCN, Chair
Rochelle Rollins, PhD, Co-chair

HOPE JURY COMMITTEE

Lynne Nguyen, MPH, Co-Chair
Beverly Gor, EdD, Co-Chair
Darlene Alexander
Sharea Carey
Leilani Cronin, PhD
Marisa Mir
Angela C. Price
Betty Stewart, PhD
Cayla R. Teal, PhD
Isabel Torres, DrPH
Luis Velez, MD, PhD
Marbelly Miranda Walker

HEIGHT JURY COMMITTEE

Betsy Clark, PhD, Co-Chair
Reginald C.S. Ho, MD, Co-Chair
Gem Das, MA
Doris Browne, MD
Yvette Colon, MSW
Gil Friedell, MD
Roselyn Payne Epps, MD, MPH, MA
Elmer Huerta, MD
Alexine Clement Jackson
Lovell Jones, PhD
Susan M. Shinagawa
Armin Weinberg, PhD
Dorothy I Height, PhD (Ex-officio)
Pamela Jackson, MS (Ex-officio)
Jay Silver (Ex-officio)

HOPE AND HEIGHT AWARDS CELEBRATION COMMITTEE

Alexine Clement Jackson, Co-Chair
David Wetter, PhD, Co-Chair

LEAP OF FAITH JURY COMMITTEE

Lovell Jones, PhD, Co-Chair
Armin Weinberg, PhD, Co-Chair

LASALLE D. LEFFALL JURY COMMITTEE

Fredrick Li, MD, Honorary Chair
Lovell Jones, PhD, Co-Chair
Armin Weinberg, PhD, Co-Chair
Linda Burhansstipanov, MSPH, DrPH,
CHES
Harold P. Freeman, MD
Gilbert H. Friedell, MD
M. Alfred Haynes, MD
Howard Koh, MD
Franklyn Prendergast, MD
Amelie G. Ramirez, DrPH

Symposium Committees and Chairs

Louis Sullivan, MD
G. Marie Swanson, PhD
La Salle D. Leffall, Jr., MD, FACS
(Ex-Officio)

LASALLE D. LEFFALL BANQUET COMMITTEE

Barbara Sapp Davis, RN, BSN, CNOR
Thomas B. Horvath, MD, FRACP

HERB NICKENS AWARD JURY & LUNCHEON COMMITTEE

James Phillips, MD, Chair
Patrice Desvigne Nickens, MD, Co-Chair
Nicholas Iammarino, PhD, Co-Chair

SUSAN MATSUKO SHINAGAWA AWARD JURY COMMITTEE

Margie Kagawa-Singer, PhD, Chair
Neal Palafox, MD, Co-Chair
Andy Miller, MHES, CHES
Susan M. Shinagawa

SUSAN MATSUKO SHINAGAWA AWARD Luncheon Committee

Mary Bennett, MFA, Co-Chair
Andy Miller, MHES, CHES, Co-Chair
Zora Kramer Brown
Cheryl Kidd, MPH

FOUNDERS AWARD JURY COMMITTEE

Lovell Jones, PhD, Co-Chair
Armin Weinberg, PhD, Co-Chair
Jenny Cook, Vice Chair

EVALUATION COMMITTEE

Larry Laufman, EdD, Chair
Linda Burhansstipanov, MSPH, DrPH, CHES
Mark Dignan, MPH, PhD

CEU COMMITTEE

Jody Pelusi, FNP, AONS, PhD, Chair
Nick Iammarino, PhD, CHES, Co-Chair
Molly Gee, Med, RD, LD, Co-Chair
Betsy Clark, PhD, MSW Co-Chair

GREAT AMERICAN POSTER PICNIC

Richard Hajek, PhD, (CoChair)
Frank Talamantes, PhD (Co-Chair)
Adolphus P. Toliver, PhD (Co-Chair)

STUDENT MENTORING PROGRAM & ABSTRACT REVIEW (UNDERGRADUATE)

James Phillips, MD, Co-Chair
Nicholas Iammarino, PhD, Co-Chair
Marion Johnson-Thompson, PhD, Co-Chair
Nelson Aguila, DVM
Doris Browne, MD
Camina Davis, MPH, MSPH
Sandrell Hullett, MD, MPH
Suzanne A. Gronemeyer, PhD
Katherine Graham Johnson, PhD
Jeffrey Guidry, PhD
Gary Gurian
Lovelle Jones, PhD
Cheryl Kidd, MPH
Belinda Locke
Ngina Lythcott, DrPH
Ana Navarro, PhD
Peter Ogunbiyi, DVM
Derrick Tabor, PhD
Evaon Wong-Kim, PhD, LCSW, MSW
Patty Lee Robinson, MPH
Amelie Ramirez, DrPH
Armin Weinberg, PhD
Makeda Williams, PhD

ICC PUBLICATIONS COMMITTEE

Cathy Meade, PhD, Chair

PROFESSIONAL /GRADUATE ABSTRACT

Richard Hajek, PhD, Chair

STUDENT PUBLICATIONS COMMITTEE

Nicholas Iammarino, PhD, Chair
Patti Lee Robinson, MPH, Co-Chair

STUDENT ORAL JURY COMMITTEE

Marion Johnson-Thompson, , PhD, Chair
Nelson Aguila, DVM
Doris Browne, MD
Camina Davis, MPH, MSPH
Katherine Graham Johnson, PhD
Lovell Jones, PhD
Cheryl Kidd, MPH
Belinda Locke
Ngina Lythcott, DrPH
Peter Ogunbiyi, DVM
James Phillips, MD
Derrick Tabor, PhD
Armin Weinberg, PhD
Makeda Williams, PhD

TRAVEL

Richard Chisenhall

STAFF

Evelyn Caston
H. Paul Cooper, MA
Thelma Crider
Monique DeLynn
Isabelle Estudillo
Patricia Fuchs, RD, LD
Pamela M. Jackson, MS
Patricia Lukaszewski
Trang Murray
Vernesta Robinson
Jay Silver
Judith Wilson

Pre-Symposium Workshops

10TH BIENNIAL SYMPOSIUM ON MINORITIES, THE MEDICALLY UNDERSERVED & CANCER

Tuesday, April 18, 2006

5:00 pm – 8:00 pm **Registration** **West Conference Registration Desk**

Wednesday, April 19, 2006

7:00 am – 7:00 pm **Registration** **West Conference Registration Desk**

8:00 am – 6:00 pm **Student Mentoring Program Registration** **Hampton Ballroom**

8:00 am – 11:45 pm **Exhibit Set-Up** **Blue Pre-Function Room**

12:30 pm – 4:00 pm **Exhibit Set-Up** **Blue Pre-Function Room**

12:30 pm – 4:15 PM **PRE-SYMPOSIUM WORKSHOPS**

Room Assignments Refer to Handout

Chairs: Helen C. McCarthy, RN, MPA, OCN
Rochelle Rollins, PhD

I. GRANT WRITING – COMMUNITY-BASED

Larry Laufman, EdD
Baylor College of Medicine

The goal of this workshop is to give the participants an understanding of how community based grants are typically developed and presented for funding. Workshop participants will be given examples, tips, and tricks to make their grant writing less stressful and more successful.

II. CULTURAL COMPETENCY

Patricia Matthews-Juarez, PhD
Meharry Medical College

Evaon Wong-Kim, LCSW, MPH, PhD
California State University, East Bay

Barbara Sapp Davis, RN, BSN, CNOR
National Association for the Advancement of Colored People

Angel Rubio, MA
*Project Director-Community Based Research
Appalachia Cancer Network*

Pre-Symposium Workshops

Daniel Bustillos, JD, PhD
ICC Research Fellow
Baylor College of Medicine

Dineo Khabele, MD
Director, Gynecologic Oncology & Women's Cancer Research Laboratory
Meharry Medical College

Culturally competent care is critical to effective cancer care. Expert panelists of social workers and cancer survivors will provide information to health professionals in building culturally competent communities of care. Participants will explore how our institutions and established processes affect the delivery of culturally competent cancer care in medical settings. Finally, the Seven Collective Habits for Developing Effective Cultural Competence will be discussed. This last session will summarize the comments and examples of the previous speakers by engaging the participants in a dialogue about suggested “collective habits” we may want to encourage in our work.

III. Surviving: Long Term Effects of Cancer and Its Treatment

Jody Pelusi, FNP, AOCN, PhD
US Oncology

COL (Ret) James E. Williams, Jr., MS,SPHR
Pennsylvania Cancer Coalition

This workshop explores issues faced by cancer survivors after their cancer treatments. Topics included: what happens when treatment is over, how to transition from treatment to being a long-term survivor, developing a follow up plan, incorporating wellness into your life, addressing family and work issues, and identifying resources and opportunities. It also reviews what is currently known regarding common latent side effects such as lymphedema, osteoporosis, cardiac/pulmonary changes, alterations in sexuality and body image, and second malignancies. Discussion regarding follow-up guidelines, symptom identification and possible prevention and management interventions will be included.

Audience: cancer survivors and their families, health care professionals, researchers, policy makers, insurers, tumor registrars and pharmaceutical representatives. Everyone needs to be aware of potential long-term side effects and what can be done to eliminate, reduce or manage them if they occur.

IV.(a) Making Indigent Care Profitable

Joe T. Porter
American Cancer Society Volunteer

Judith Starkey
Chamberlain Edmonds, Inc

This workshop will identify how service providers may recover funding for providing care to indigents.

IV.(b) Medicare Prescription Drug Coverage

David A. Chatel
Acting Director of Patient Advocacy
Centers for Medicare & Medicaid Services (CMS)

Amy Larrick
Lead Trainer, Division of Customer Service and Training
Office of External Affairs
Centers for Medicare & Medicaid Services (CMS)

David Chatel, Acting Director of Patient Advocacy at the Centers for Medicare & Medicaid Services, will provide a brief overview of CMS's outreach campaign around Medicare prescription drug coverage, including the important involvement of community-based organizations in this effort. Amy Larrick, from the CMS Office of External Affairs, will then give an overview of the prescription drug coverage. Her presentation will include information on eligibility, enrollment, formularies, and factors a person should consider when deciding to choose and join a plan.

V. Patient Advocacy and Navigating the Healthcare System

Nancy Davenport-Ennis
President & CEO
National Patient Advocate Foundation

Fran Castellow, MEd
Chief Operating Officer
National Patient Advocate Foundation

Molly Tanner, BS
Marketing & Developing Coordinator
National Patient Advocate Foundation

This workshop will help you discover ways in which you can make a remarkable difference in the lives of people in your community and in America by learning the skills necessary to navigate the path to effective patient advocacy. You will have the opportunity to influence healthcare legislation and educate your community as you develop the skills to become a voice for patients. Effective communication is key in treatment and in navigating the healthcare system. We will discuss, in practical dialogue, a number of challenging issues and the problems inherent to addressing them, as well as offering resources for well-informed decision making.

VI. Grant Writing-Federal & Private Funding

Diana Jeffery, PhD
National Cancer Institutes

Lee Mann, PhD, JD,
Scientific Review Administrator,
National Institutes of Health

Scientific administrators from federal agencies will review government funding opportunities, including special funding programs for minority scientists. This session will cover grant mechanisms, the required components in grant applications, training and fellowship awards, the application process, peer review, and helpful resources. Participants will be encouraged to ask questions and/or contact the presenters regarding their research ideas and funding needs.

VII. Palliative Care and End of Life Issues

Christine DeCourtney, MPA
Alaska Native Tribal Health Consortium

Guadalupe Palos, PhD
Department of Symptom Research
UT MD Anderson Cancer Center

This workshop is designed to increase the culturally specific knowledge of nurses and health professionals who are working with the increasing numbers of a heterogeneous Hispanic/Latino and American Indian/Alaska Natives patient population. The program will provide key information and give nurses the tools

to deliver effective, quality oncology care. The workshop will provide the knowledge needed to bridge the gap between nursing care and an ethnic population that is rapidly growing and our most northern native population in America.

VIII. Cancer Clinical Trials: What Do They Mean for People in My Community?

Margo Michaels, MPH

Education Network to Advance Cancer Clinical Trials (ENACCT)

Joy Workman, MSW

Education Network to Advance Cancer Clinical Trials (ENACCT)

Felicia M. Solomon, MPH

National Cancer Institute

"Equal access to clinical trials is less a matter of scientific necessity than of social justice."

Experts continually recommend new community based approaches for clinical trial outreach and accrual, calling for "enhanced efforts at minority patient recruitment and retention to (cancer) clinical trials" and noting that "success (in clinical trials accrual) will require sustained, aggressive action, and new partnerships between policymakers, healthcare professionals, professional societies, and underserved communities." In this interactive workshop, participants will explore the possibilities of engaging in clinical trial advocacy. By the end of this workshop participants will be able to:

- Distinguish myths from facts about clinical trials
- Review why clinical trials may be important for people in one's own community
- Discuss how concepts of social justice may relate to clinical trial advocacy
- Identify barriers to enrolling in clinical trials, particularly for minority communities
- Identify ways to begin to overcome these barriers in one's own community
- List ways to use available clinical trial education materials in one's own community
- Develop a plan for conducting an educational outreach program in one's own community

IX. Advocacy for Change

David Woodmansee

American Cancer Society

Government Relations

The workshop will inform local and state attendees on the use of advocacy in promoting The State Cancer Plans. The focus will be to make sure these cancer plans reflect the ICC Mission and Goals. You will be trained on the how to and how not to bring your message to members of State Legislatures as well as members of Congress. Join us for some fun as well as skill building in advocacy.

X. Obesity: Updates, Realities and a Toolkit for Addressing the Problem in Diverse Communities

Beverly Gor, EdD, RD

UT MD Anderson Cancer Center, Center for Research on Minority Health

Lindsay Rodgers, BA, RD, LD

University of Texas at Austin

This workshop will present current information about the prevalence and impact of obesity on U.S. populations, with special emphasis on racial and ethnic minorities and the medically underserved. Also, the presentation will include cultural perspectives on obesity, physical activity strategies, recommendations for addressing obesity in a culturally competent and effective manner. Examples of best practices and resources for practitioners to implement will be discussed.

XII. CancerPLANET

Jon Kerner, PhD

National Cancer Institute

In this interactive, computer-based training, participants will learn to navigate the Cancer Control PLANET (Plan, Link, Act, Network with Evidence-based Tools) Web portal in order to bridge the research discovery-program delivery gap and increase the adoption of evidence-based approaches in comprehensive cancer control planning, implementation and evaluation.

(This 3-1/2 hour workshop is tentatively scheduled to take place at the **National Institutes of Health campus**. Participants will meet at the OMNI Shoreham Hotel Lobby at **11:30 am** and travel by Metro to the NIH campus. Participation for this workshop is limited to 30 individuals.)

10TH BIENNIAL SYMPOSIUM ON MINORITIES, THE MEDICALLY UNDERSERVED & CANCER

Wednesday, April 19, 2006

OPENING CEREMONY

5:00 pm – 7:30 pm

OPENING CEREMONY

Regency Ballroom

Chair: Doris Browne, MD

Vice Chair: Patricia Matthews-Juarez, PhD

Survivor's Promenade

Grand Marshall

Nancy G. Brinker

Founder, The Susan G. Komen Breast Cancer Foundation

Color Guard

Howard University ROTC

National Anthem

Alicia R. Davis-Patterson

Invocation

Reverend Jocelyn Irving

Rector, Episcopal Church of the Atonement

Welcome

Pamela K. Brown, MPA

Symposium Chair

Opening Remarks

Nancy G. Brinker

Founder, The Susan G. Komen Breast Cancer Foundation

Honorary Chair

Remarks on Behalf of Survivors

Andrew C. von Eschenbach, MD

Acting Director, FDA

The Harold P. Freeman Inaugural Lectureship

Honoree: Harold P. Freeman, MD

Medical Director and CEO

Ralph Lauren Center for Cancer Care and Prevention

Staying Committed: Addressing Disparities

“Cancer Stories”

Perley Isaac Reed School of Journalism
Mary Babb Randolph Cancer Center
West Virginia University

Health Disparities in Rural America

Hilda R. Heady
Immediate Past President
National Rural Health Association

Keynote Speaker

Honorable Bob Wise, Former Governor, West Virginia
Alliance for Excellent Education

The Call to Action

Committed to Eliminating Disparities
Antonia C. Novello, MD, DrPH, MPH
Former US Surgeon General
Commissioner of Health, State of New York

Founder’s Awards Ceremony

Honorees: Mervyn M. Dymally
California State Assemblyman

Honorable Lloyd M. Bentsen
Former U.S. Senator and Secretary of the Treasury

Charles M. LeMaistre, MD
President Emeritus
UT MD Anderson Cancer Center

Closing Remarks

Stephen P. Jiang, ACSW
ICC Chair

7:30 pm

Adjourn

7:45 pm – 9:30 pm

SURVIVORS & FOUNDERS’ AWARD RECEPTION

Chair: COL (Ret) James E. Williams, Jr., MS, SPHR
Vice-Chair: Ivis Febus-Sampayo

Ambassador Ballroom

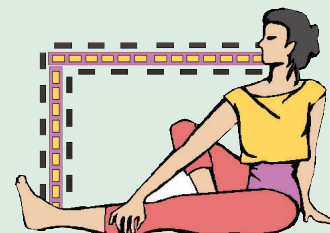
10TH BIENNIAL SYMPOSIUM ON MINORITIES, THE MEDICALLY UNDERSERVED & CANCER

Thursday, April 20, 2006

DAY OF DISCOVERY

6:00 am – 7:00 am

“Exercise Your Way to Good Health”



There will be something for everyone regardless of your physical condition

Get Up and Get Out – Parkview Entrance

We will power walk in the park one day and on another day visit giant pandas Mei Xiang, Tian Tian and the new baby, Tai Shan, at the National Zoo.

Native Morning Exercises – Diplomat Terrace

We will do stretching, then some traditional Native dancing and other fun rez style movements. These exercises will be augmented by descriptions of the history of the dances, variations by regions and cultural perceptions.

Survivors Exercises – Bird Cage Walk

We encourage all survivors to join us in an early morning activity of free spirited exercises.

7:00 am – 7:00 pm

Registration

West Conference Registration Desk

7:00 am – 7:30 am

Breakfast

Regency Ballroom

7:30 am – 9:00 am

Celebrating Breast Cancer Research

Regency Ballroom

Moderator: Cheryl Kidd, MPH
The Susan G. Komen Breast Cancer Foundation

Success Stories From Our Communities

Paula A. Espinoza, PhD
University of Colorado

The Avon Comadre Program: Increasing Early Detection of Breast Cancer Among Latinas Through Lay Health Educators

Holly L. Kiger, RN, MN
Center for Health Aging, California

Training Volunteers to Support Older Women After Breast Cancer Surgery

Amari Sokoya Pearson-Field, MPH, PhD(c)
Mautner Project

Spirit Health Education Circle: Igniting the Spirit of Healing for African American Lesbian and Bisexual Women

Susan K. Hoppough, PhD, RN
The Lacks Cancer Center at Saint Mary's Health Care
*Creating Culturally Specific Health Information Using
Community Participatory Strategies*

Patricia A. Valverde, MPH
University of Colorado
*Project SOL: Survivorship Outreach to Latinas with Breast
Cancer through Patient Navigation*

9:00 am – 9:15 am

Break

8:30 am – 12:45 pm

Exhibits Open

Blue Pre-Function Room

9:15 am – 12:30 pm

General Sessions-Research

Blue Room

Chairs: LaSalle D. Leffall, Jr., MD, FACS
John Mendelsohn, MD

9:15 am – 10:45 am

General Session I: Cancer Prevention Research

Welcome

20 Years of Reflection and Projection for the Future

LaSalle D. Leffall, Jr., MD, FACS
Howard University Hospital

Population-based Prevention Research

Marjorie Kagawa-Singer, PhD, MN, RN
UCLA School of Public Health

The NCI-Past, Present, and Future

Sanya A Springfield, PhD
National Cancer Institute

The Cancer Centers' Role in Prevention Research

Ronald B. Herberman, MD
University of Pittsburgh Cancer Institute

Reality Check on Cancer Prevention Research, Dileep Bal, MD, Hawaii Health Dept.

10:45 am – 11:00 am

Break

11:00 am – 12:30 pm

General Session II: Genomic Research

Blue Room

Chairs: LaSalle D. Leffall, Jr., MD, FACS
John Mendelsohn, MD

Genomic and Race Based Medicine

Jerome Wilson, PhD
National Center on Minority Health and Health Disparities, NIH

FDA and Approval of Race Based Drugs

Robert Temple, MD
Director, Office of Medical Policy, FDA

Professional / Academic Program

Ethical and Legal Implications for Genomics Policy

Daniel Bustillos, JD, PhD
 ICC Research Fellow
 Baylor College of Medicine

Simple Explanation of How Drugs are Metabolized

Lynn Bemis, PhD, MPH
 University of Colorado Health Science Center

Reality Check on Bench Science, Lovell Jones, PhD, UT MD Anderson Cancer Center

SURVIVOR WORKSHOP TRACK

11:00 am – 12:30 pm

Clinical Trials

Congressional A

“Clinical Trials in Your Local Communities”

Elda Railey
 Mary Lou Smith
 Research Advocacy Network

11:00 am – 11:45 am

Part I

Congressional B

Cancer 101

A Basic Understanding of Cell Development and How Cancer Grows
 Diana Jeffrey, PhD
 Office Of Cancer Survivorship
 National Cancer Institute

Carol L. MacLeod, PhD
 Senior Program Director, Special Consultant
 Division of Cancer Biology
 National Cancer Institute

11:45am - 12:30pm

Part II

Congressional B

Home Remedies

What's in Your Medicine Cabinet? A Discussion About Complementary and Alternative Medicine and Cancer
 Margaret A. Chesney, PhD
 Office of Complementary and Alternative Medicine, NCI

12:45 pm – 2:00 pm

Herbert W. Nickens Memorial Lectureship Luncheon

Regency Ballroom

Chair: James L. Phillips, MD
Vice Chair: Patrice Desvigne-Nickens, MD

Honoree: Donald Coffey, PhD
 Johns Hopkins University, School of Medicine

2:00 pm – 2:30 pm

Break

2:00 pm – 6:00 pm

Exhibits Open

Blue Pre-Function Room

2:30 pm – 4:30 pm

General Session III: Translational and Clinical Trials Research

Blue Room

Chairs: Judith Salmon Kaur, MD
Lloyd Everson, MD

Barriers to Medically Underserved Peoples Participation and Retention in Clinical Trials

Jon Kerner, PhD
National Cancer Institute

Recruitment into the Cooperative Groups Clinical Trials Structure

Robert L. Comis, MD
Coalition of National Cancer Cooperative Groups

American College of Surgeons Oncology Group Clinical Trials

Lisa Newman, MD, MPH, FACS
University of Michigan Breast Care Center

Inclusion of the Aging Population

Lodovico Balducci, MD
University of South Florida
H. Lee Moffitt Cancer Center and Research Institute

Community Based Clinical Trials

Linda Burhansstipanov, MSPH, DrPH, CHES
Native American Cancer Research

Reality Check on Translational and Clinical Trials Research

Armin D. Weinberg, PhD, Baylor College of Medicine

4:30 pm – 4:45 pm

Break

Take a break and take your seat. Refreshments will be served in Student Orals presentation rooms

4:45 pm – 6:00 pm

Student Orals

See Abstract, Scientific Oral Presentation and CERP Workshop Brochure for rooms

4:45 pm – 5:45 pm

Cancer Education Resource Program (CERP) Workshops Concurrent

See Abstract, Scientific Oral Presentation and CERP Workshop Brochure for descriptions

Through the Lens of Culture: Cross Cultural Comparison of Similarities and Differences in End of Life Care

Palladian Room

Sharon R. Latson
Vitas Healthcare Corporation

Literacy and Urban Issues: To Reach Men, Women and Disabled Populations, through Culturally Sensitive Approaches and Peer Educators

Empire Ballroom

Joyce Dolbec, MA
YWCA-Northern Rhode Island

Dos Amigos: Prostate Screening Information DVD for Hispanic/Latino Men

Capitol Room

Kathleen Scura, EdD, RN
Neddie Serra, EdD, RN
William Paterson University, Wayne, NJ

Professional / Academic Program

Faith Based Community Programs

Blue Room

For the Glory of God: Establishing Health Ministries in the African American Community

Rita C. Gondocs, MPH

American Cancer Society - North Shore, Evanston, Illinois

"Healthy Spirits"

Katora P. Campbell, MPH

Marian A. Robinson, MSN

Partners for a Healthy Community-Caring Communities Project
Clemson University, Anderson, SC

The Jameslink: A Tool to Assess Cancer Risk in Your Community

Ambassador Ballroom

Kevin Sweet, MS, CGC

Kimberly Kelly, PhD, MS

Ohio State University Comprehensive Cancer Center
Clinical Cancer Genetic Program

State Comprehensive Cancer Control Plan: A Community Approach Texas Cancer Control Tool Kit: Bringing the Texas Cancer Plan to Communities

Governors Room

Carla Strom, MLA

UT MD Anderson Cancer Center

Juanita Salinas

Texas Department of State Health Services

Community-based Research Education in Eastern Kentucky (CREEK): A Program to Build the Capacity of Rural Communities to Conduct Health Research for the Control and Prevention of Cancer and Chronic Disease in a Health Disparity Population

Executive

Gilbert H. Friedell, MD

Director Emeritus

Markey Cancer Center

University of Kentucky

Angel Rubio, MA

Program Director for Community Based Research and Special Projects,
Appalachia Cancer Network, University of Kentucky

6:00 pm

Adjourn (Dinner on your own)

10TH BIENNIAL SYMPOSIUM ON MINORITIES, THE MEDICALLY UNDERSERVED & CANCER

Friday, April 21, 2006

DAY OF DELIVERY



6:00 am – 7:00 am

“Exercise Your Way to Good Health”

There will be something for everyone regardless of your physical condition

Get Up and Get Out – *Parkview Entrance*

We will power walk in the park one day and on another day visit giant pandas Mei Xiang, Tian Tian and the new baby, Tai Shan, at the National Zoo.

Native Morning Exercises – *Diplomat Terrace*

We will do stretching, then some traditional Native dancing and other fun rez style movements. These exercises will be augmented by descriptions of the history of the dances, variations by regions and cultural perceptions.

Survivors Exercises – *Bird Cage Walk*

We encourage all survivors to join us in an early morning activity of free spirited exercises.

7:00 am – 6:00 pm	Registration	West Conference Registration Desk
7:00 am – 7:30 am	Breakfast	Regency Ballroom
7:30 am – 8:45 am	National Marrow Donor Program Donor Meets Recipient	Regency Ballroom
8:45 am – 9:00 am	Break	
8:45 am – 12:45 pm	Exhibits Open	Blue Pre-Function Room
9:00 am – 10:45 am	General Session I: Advocating for an Equitable Workforce	Blue Room
	<i>Chairs:</i> Harry Gibbs, MD Amelie G. Ramirez, DrPH	
9:00 am	Welcome	
	<i>20 Years of Reflection and Projection for the Future</i> Harry Gibbs, MD UT MD Anderson Cancer Center	
	<i>“Sullivan Commission Report”</i> The Honorable Louis Sullivan, MD Former Secretary of Health and Human Services	

Professional / Academic Program

Surge Capacity and the Cancer Corp

Maureen Y. Lichtveld, MD, MPH
C-Change
Tulane University

Advocating for an Equitable Workforce

Eduardo J. Sanchez, MD, MPH
Commissioner
Texas Department of State Health Services

Reality Check on the Equitable Workforce, John E. Arradondo, MD, MPH, FAAFP

SURVIVOR TRACK

9:00 am – 10:45 am

How to Start Your Own Support Group

Bobbi de Córdoba Hanks
Bosom Buddies

Lisa Harjo, MPH
Native American Cancer Research

Pattie M. King, LPN
Gila River Cancer Support Group

Eugene Wheeler
US TOO, International

Ming-Der Chang, PhD
Nancy Liao,
Chinese Breast Cancer Patient Support Group

Ivis Febus-Sampayo
Latina Director-SHARE

Mary Jackson Scroggins
Ovarian Cancer Support Group
In My Sister's Care

Congressional A

10:45 am – 11:00 am

Break

11:00 am – 12:30 pm

General Session II: DHHS Committed to Eliminating Disparities

Chairs: Elmer Huerta, MD, MPH
Garth Graham, MD, MPH

Blue Room

Keeping Our Promise: Making Cancer Health Disparities History

The Department of Health and Human Services (DHHS) session, entitled “DHHS Committed to Eliminating Disparities, Keeping Our Promise: Making Cancer Health Disparities History” will provide the opportunity for DHHS representatives to share progress in implementing recommendations from the TransHHS Progress Review Group Report on Cancer (PRG Report) via a mock radio show format. At the 9th Biennial Symposium in 2004, DHHS released the PRG Report, the product of a year long Department wide process which entailed an extensive study of current knowledge and interventions related

to cancer health disparities. The PRG process resulted in a set of recommendations that, if fully implemented through public and private sector efforts, could eliminate cancer disparities. The radio show format for the HHS Session will include both a formal panel presentation and a simulated 'call-in' component, which will be moderated by Dr. Elmer Huerta, Director of the Cancer Risk Assessment and Screening Center at the Washington Cancer Institute at the Washington Hospital Center and host of the radio program, "Cuidando su Salud" (Taking Care of Your Health), in Washington, D.C., and Dr. Garth Graham, Deputy Assistant Secretary for Minority Health.

Round Table Participants: Members of Trans HHS Cancer Health Disparities Progress Review Group

Reality Check on Making Cancer Health Disparities History (PRG)-The ICC Audience

12:30 pm – 12:45 pm

Break

12:45 pm – 2:15 pm

Susan M. Shinagawa Award Luncheon

Regency Ballroom

Chairs: Mary Bennett, MFA
Andy Miller, MHES, CHES

Congressional Message:

Senator Dianne Feinstein, California

Awards Ceremony

Susan M. Shinagawa Award

Honoree: Dileep G. Bal, MD, MS, MPH
District Health Officer
Hawaii Department of Health

2:15 pm – 3:00 pm

Break

2:30 pm – 5:30 pm

Exhibits Open

Blue Pre-Function Room

3:00 pm – 4:30 pm

**Cancer Educational Resource Program
"Examining Cancer Interventions in 2006"**

Addressing Health Disparities: NCI/CIS Resources at Work

Blue Room

This workshop will detail the new resources available to the public through this nationwide cancer information and referral service, available in all 50 states and Puerto Rico and receives more than 2,000 calls each day.

Moderator: Pamela K. Brown, MPA
Mary Babb Randolph Cancer Center

Mary Anne Bright, Director,
National Cancer Institute's Cancer Information Service

Patient Navigator and Clinical Trials Matching Program

Diplomat Room

The ACS Patient Navigator Program is one component of a broader navigation system offered by the American Cancer Society. The ACS Patient Navigator Program involves the placement of trained ACS staff in strategically selected healthcare facilities with oncology treatment services. Host healthcare facilities will be carefully selected, based on outlined criteria to maximize organizational collaboration and outreach efforts to the medically underserved. This workshop will discuss the partnering of both ACS programs and its outcome.

Professional / Academic Program

Moderator: Ermilo Barrera Jr., MD
Northwestern University Feinberg School of Medicine
American Cancer Society, National Board of Directors

Angelina Esparza, BS, BSN
American Cancer Society
National Office

Ted Gansler, MD
American Cancer Society
National Office

Adrienne White, MPA, CHES,
American Cancer Society, Chicago

Colorectal Cancer Program

Empire Ballroom

The American Cancer Society recommends that men and women 50 or more years of age have an annual fecal occult blood test (FOBT) and a flexible sigmoidoscopy (FS) examination every five years to screen for colorectal cancer (CRC). Alternative CRC screening regimens that are recommended include having a barium enema X-ray (BE) at five-year intervals or a colonoscopy (CX) every 10 years. Compliance with CRC screening guidelines is low. The study, Increasing Colon Cancer Screening in Primary Care, is intended to develop and test methods that may be used to increase CRC screening compliance. This presentation will discuss the results of this study in different populations.

Moderator: Veronica Chollette, RN, MS
Program Director
Division of Cancer Control and Population Sciences, National Cancer Institute

Panel

Roshan Bastani, PhD
Professor and Associate Dean for Research
UCLA School of Public Health, Los Angeles, CA

Ethnically Targeted and Individually Tailored Intervention for Family Members of Colorectal Cancer Cases: Did it Work in all Ethnic Groups?

Bang Nguyen, DrPH
Research Scientist, Northern California Cancer Center, San Francisco, CA

Colorectal Screening in Vietnamese: A Controlled Trial.

Mark Dignan, PhD
Professor, Markey Cancer Center, University of Kentucky Foundation, Louisville, KY

Increasing Colorectal Cancer Screening in Rural Kentucky.

Sarah Fox, PhD
Professor, Director of the Cancer for Community Partnerships in Health Promotion, University of California, Los Angeles, CA

Individual and organizational CRC screening interventions in congregations:
Cost, logistical and diffusion differences.

Race, Ethnicity and Beyond

Capitol Room

For more than 20 years, the Susan G. Komen Breast Cancer Foundation and its network of Affiliates have funded programs to support our mission of eradicating breast cancer as a life threatening disease. Screening, treatment and education programs are identified via a Community Profile, which is conducted by the Affiliate biannually within their respective service areas. This session is a dynamic learning opportunity that provides ways to reach out to and connect with the many different people who live in your community.

Moderator: Cheryl Kidd, MPH, Director of Education
The Susan G. Komen Breast Cancer Foundation

I WILL: Incarcerated Women Interested in Learning & Living
Angelicia Bunch, BA, JD
North Carolina Triangle Affiliate

Recruiting Volunteers for Outreach: A Description of SOV
Mary Lou Adams, PhD, RN, CS, FNP
Austin, Dallas, Houston & Tyler Affiliates

East - West Breast Express
Selma Morris, MEd and Bonnie Wheatley, MPH, MA, EdD
Susan G. Komen Breast Cancer Foundation, Atlanta, Georgia and Oakland, California

Scouting for the Cure™
Margaret and Elizabeth Stothart
Charlotte Affiliate

Investing in Capacity-Building for Community-Based Organizations **Governors Room**

This interactive session will explore the major challenges for community-centered organizations and discuss how these challenges can best be met through collaborative, coordinated efforts to build capacity at the local levels.

Moderator: Mary Bennett, MPA
American Pain Foundation

Andy Miller, MHSE, CHES
Lance Armstrong Foundation

Claire Neal, MPH, CHES
Lance Armstrong Foundation

Comprehensive Cancer Control in Indian Country

Room to be Announced

This session will include a discussion on how sovereignty makes AI/AN different from other minorities. It is this special relationship that complicates the healthcare systems for AI/AN.

Moderator: Captain Lauren Tancona, BSN
Tribal Liaison
Centers for Disease Control and Prevention

Sara Zeigler, MPA
Public Health Advisor
Centers for Disease Control and Prevention

Professional / Academic Program

Charlton Wilson, MD
Associate Director, Center of Excellence,
Phoenix Indian Medical Center

Pattie M. King, LPN
Cancer Services Advocate
Gila River Indian Community

Judith Muller
Comprehensive Cancer Program Coordinator
Alaska Native Tribal Health Consortium

3:00 pm – 5:30 pm

Professional Oral Presentations- Academic and Community

(See Abstract, Scientific Oral Presentation and CERP Workshop Brochure for descriptions)

SURVIVOR WORKSHOP TRACK

4:45 pm – 5:30 pm

What is Pain Management? What role does the survivor play in managing pain?

Governors Room

Mary Bennett, MFA
American Pain Foundation

Pamela Bennett, RN, BSN
Purdue Pharma L.P.

4:45 pm – 5:45 pm

Cancer Education Resource Program Workshops (5 Concurrent)

See Abstract, Scientific Oral Presentation & CERP Workshop Brochure for descriptions

Health Literacy, Patient Education and Specialized Medical Care

Blue Room

Martha Burton Santibanez
National Marrow Donor Program

Jade Ribbon Campaign: A Culturally Targeted Global Intervention to Address the High Prevalence of Hepatitis B Among Asians and Asian Americans. Testing Vaccinating Asian Americans for Hepatitis B in a Non-Medical Setting: 3 for Life Project

Capitol Room

Eric R. Sue, BS
Asian Liver Center at Stanford University

Seeking Cecums: A Faith Based Initiative to Eliminate Barriers to Colon Cancer Screening

Empire Ballroom

Stephen C. Lloyd, MD, PhD
Carolina Community Based Health Support Network

A Web-Based Approach to Providing Cancer Education Materials in Asian and Pacific Islander Languages

Diplomat Ballroom

Reginald C.S. Ho, MD
Asian American Network for Cancer Awareness, Research and Training (AANCART)

Focus Group-ICC National Network

This workshop is for the ICC National Network Regional Leaders.
Pamela M. Jackson, MS
ICC Outreach Director and ICC National Network

Room to be Announced

Gilbert Friedell, MD
Focus Group Leader

5:45 pm

Adjourn

7:00 pm – 9:30 pm

**HOPE & Height Award Celebration
(Traditional native or cultural attire suggested)**

Regency Ballroom

Chairs: Alexine Clement Jackson
David W. Wetter, PhD

Mistress of Ceremony: Andrea Roane

Morning Anchor
CBS- WUSA

Special Performances by:

The Readers Theaters
On Borrowed Time: Creativity and Healing

Ashley Jordan Mandanas
Vocalist

Joseph Enos
Spiritual Counselor
Gila River Healthcare Corporation of the Gila River Indian Community

HOPE Awardees:

- ◆ The Gila River Cancer Support Group
- ◆ Martha Haley
- ◆ Wendy Yoo
- ◆ Victor Kaiwi Pang
- ◆ Melissa Thomas

Height Honoree:

Harold P. Freeman, MD
Ralph Lauren Center for Cancer Care and Prevention

10TH BIENNIAL SYMPOSIUM ON MINORITIES, THE MEDICALLY UNDERSERVED & CANCER

Saturday, April 22, 2006

THE DAY BEFORE AND THE DAY AFTER



6:00 am – 7:00 am

“Exercise Your Way to Good Health”

There will be something for everyone regardless of your physical condition

Get Up and Get Out – Parkview Entrance

We will power walk in the park one day and on another day visit giant pandas Mei Xiang, Tian Tian and the new baby, Tai Shan, at the National Zoo.

Native Morning Exercises – Diplomat Terrace

We will do stretching, then some traditional Native dancing and other fun rez style movements. These exercises will be augmented by descriptions of the history of the dances, variations by regions and cultural perceptions.

Survivors Exercises – Bird Cage Walk

We encourage all survivors to join us in an early morning activity of free spirited exercises.

7:00 am – 1:00 pm

Registration

West Conference Registration Desk

7:00 am – 7:30 am

Breakfast

Regency Ballroom

7:30 am – 8:30 am

Patient Navigator Program: Lesson Learned from the Native American Patient Navigation Program Pilot

Regency Ballroom

This session will provide an overview of the NCI's Patient Navigation pilot program, and briefly discuss cancer incidence, morbidity, and mortality in Northwest Native American communities. A cancer survivor will also present her perspective of patient navigation. Finally, lessons learned and challenges in designing project evaluations will be discussed.

Moderator

Roland Garcia, PhD
Center to Reduce Health Disparities
National Cancer Institute

Patient Navigator Panel

Joshua Jones, MD
Northwest Portland Area Indian Health Board

Christine Merenda, BSN, RN, OCN
Yakama Indian Health Center

Amanda Greene, PhD, MPH, RN
NOVA Research Company

Katrina Ramsey, BA
Northwest Portland Area Indian Health Board

Lucy De Los Santos
Yakama Survivor

8:30 am – 1:00 pm

Exhibits Open

Blue Pre-Function Room

8:30 am – 8:45 am

Break

8:45 am – 10:00 am

General Session I - Implementation of Prevention

Blue Room

Chair: Dileep G. Bal, MD

Welcome

20 Years of Reflection and Projection for the Future

Kellogg Company

Keynote Address:

Eddie Reed, MD

Director, Division of Cancer Prevention and Control Centers for Disease Control and Prevention

Prevention Panel

Kurt Snipes, PhD

California Department of Health Services

Cancer Control Services Branch

California Tobacco Program

Susan Foerster, MPH, RD

Chief, Cancer Prevention, Physical Activity, Diet and Cancer Program

California Department of Health Services

Reality Check on Prevention, Margie Kagawa-Singer, PhD, UCLA School of Public Health

10:00 am – 10:15 am

Break

10:15 am – 11:15 am

General Session II - Survivorship Research:

Blue Room

Community Driven and Community Based Participatory Research

Chair: Linda Burhansstipanov, MSPH, DrPH, CHES

20 Years of Reflection and Projection for the Future

Harmon Eyre, MD

American Cancer Society

Native American Cancer Survivorship

Linda Burhansstipanov, MSPH, DrPH, CHES

Native American Cancer Research

Native American Survivor

Arlene Wahwasuck, RN, Retired

Prairie Band Potawatami Tribe

Asian-American Cancer Survivorship

Marjorie Kagawa-Singer, PhD, MN, RN

Asian American Studies Department

UCLA School of Public Health

Professional / Academic Program

Suzanne Roberts
Pacific Islander Survivor

Reality Check on Survivorship, Susan M. Shinagawa, Survivor

11:15 am – 11:30 am

Break

11:30 noon – 1:00 pm

General Session III - Quality of Life Issues: A Cancer Journey

Blue Room

Chair: Richard Payne, MD

20 Years of Reflection and Projection for the Future

Armin D. Weinberg, PhD
Baylor College of Medicine

Opening Remarks

Richard Payne, MD

A Lion in the House

Steven Bognar, Producer

Discussants

Robert Washington, PhD
Chaplin
Clinical Medical Ethicist
Montgomery Hospice

Evaon Wong-Kim, PhD, LCSW, MPH
California State University, East Bay

Guadalupe Palos, DrPH, RN, LSMW
UT MD Anderson Cancer Center

Jody Pelusi, FNP, AOCN, PhD
US Oncology

Steven Bognar
Producer, A Lion in the House

Julia Reichert
Producer, A Lion in the House

Reality Check on Palliative Care-Venus Gines, MA, CEO, Dia de la Mujer Latina, Inc.

1:00 pm – 3:30 pm

Great American Poster Picnic

Regency Ballroom

Chairs: Richard Hajek, PhD
Frank Talamantes, PhD

3:30 pm – 5:00 pm

General Session III: The Burden of Cancer

Blue Room

Chairs: Lovell A. Jones, PhD
Patrice Tosi

Accelerating to Reducing the Burden of Health Disparities

Clement Bezold, PhD
The Institute for Alternative Futures

Economics of Disparities

Tina Shih, PhD
UT MD Anderson Cancer Center

National Partnership for Comprehensive Cancer Control

Lori Belle-Isle, MPH
American Cancer Society

Leslie Given, MPA
Centers for Disease Control and Prevention

***Reality Check on Comprehensive Cancer Control, Pamela Brown, MPA
Mary Babb Randolph Cancer Center***

5:00 pm

Adjourn

7:00 pm – 7:30 pm

Gala Reception

Ambassador Ballroom

7:30 pm – 9:30 pm

LaSalle D. Leffall Jr. Gala

Chairs: Barbara Sapp Davis, RN, BSN, CNOR
Thomas Horvath, MD

Regency Ballroom

Mistress and Master of Ceremonies

Jan and Sam Donaldson
ABC News

Special Guest

Nancy Wilson, Song Stylist
Rededication Presentation

Award Presentations

Student Oral Awards (Undergraduate)

The Edward L. Reed Memorial Student Scholarship

Honoree: David “Andy” Clump, II
West Virginia University

2006 Leap of Faith Award

Honoree: James W. Hampton, MD, FACP
Troy and Dollie Smith Cancer Center
University of Oklahoma

Intercultural Cancer Council Recognition Award

Presenter:
Armin D. Weinberg, PhD
Baylor College of Medicine

Honoree:
Lovell A. Jones, PhD
The University of Texas M.D. Anderson Cancer Center

LaSalle D. Leffall, Jr. Award

Honoree: Judith Salmon Kaur, MD
Mayo Clinic College of Medicine

**10TH BIENNIAL SYMPOSIUM ON MINORITIES, THE MEDICALLY
UNDERSERVED & CANCER**

Sunday, April 23, 2006

SURVIVORSHIP AND SPIRITUALITY

Chair: Col (Ret) James E. Williams, Jr., MS, SPHR

Vice Chair: Ivis Febus-Sampayo

9:00 am – 9:30 am	Breakfast	Regency Ballroom
9:30 am – 10:00 am	Spirituality and Song Ms. Renee Barnes Alumna, Duke Ellington Choir	Regency Ballroom
10:00 am – 11:30 am	Survivorship and Spirituality: “The Importance of Caregiving in Survivorship” <i>Reality Check on Survivorship and Spirituality, Evaon Wong-Kim, PhD, California State University, East Bay</i>	Regency Ballroom
11:30 am – 11:45 am	Closing Remarks Pamela K. Brown, MPA Symposium Chair Closing Prayer for a safe journey and good health Joseph Enos Spiritual Counselor Gila River Healthcare Corporation of the Gila River Indian Community	
12:00 pm	Officially Adjourned	

Safe Journey Home

Student Mentoring Program

10TH BIENNIAL SYMPOSIUM ON MINORITIES, THE MEDICALLY UNDERSERVED & CANCER

Theme: Advancing World Health Through Scientific Investigation

Please see Professional Academic Program for details of daily sessions

Wednesday, April 19, 2006

8:00 am – 6:00 pm	Student Mentoring Program Registration	Hampton Ballroom
2:30 pm – 3:15 pm	Orientation for Judges	To be announced
3:30 pm – 4:00 pm	Student Mentor Orientation <i>Moderators:</i> James L. Phillips, MD Co-Chair, Student Mentoring Program Marian Johnson-Thompson, PhD Co-Chair, Student Mentoring Program Nicholas K. Iammarino, PhD Co-Chair, Student Mentoring Program	Palladian Ballroom
5:00 pm – 7:30 pm	Opening Ceremonies	Regency Ballroom
7:45 pm – 10:00 pm	Student Orientation and Reception	Palladian Ballroom
7:45 pm – 8:30 pm	Reception	
8:30 pm – 8:35 pm	Welcome and Opening Remarks Nicholas K. Iammarino, PhD James L. Phillips, MD Marian Johnson-Thompson, PhD	
8:35 pm – 9:30 pm	Student Mentoring Program Scientific Careers Panel <i>Moderator:</i> Suzanne Gronemeyer, PhD	
9:30 pm – 10:00 pm	Student Orientation <i>Moderators:</i> James L. Phillips, MD Nicholas K. Iammarino, PhD	

Student Mentoring Program

Thursday, April 20, 2006

DAY OF DISCOVERY

6:00 am – 7:00 am

“Exercise Your Way to Good Health”

There will be something for everyone regardless of your physical condition



Get Up and Get Out – *Parkview Entrance*

We will power walk in the park one day and on another day visit giant pandas Mei Xiang, Tian Tian and the new baby, Tai Shan, at the National Zoo.

Native Morning Exercises – *Diplomat Terrace*

We will do stretching, then some traditional Native dancing and other fun rez style movements. These exercises will be augmented by descriptions of the history of the dances, variations by regions and cultural perceptions.

Survivors Exercises – *Bird Cage Walk*

We encourage all survivors to join us in an early morning activity of free spirited exercises.

7:00 am – 7:00 pm	Registration	West Conference Registration Desk
7:00 am – 7:30 am	Breakfast	Regency Ballroom
7:30 am – 9:00 am	Celebrating Breast Cancer Research	Regency Ballroom
8:00am – 12:15 pm	NIH Tour (Confirmed students – depart from lobby at 7:45 am) <i>Coordinators:</i> Marian Johnson-Thompson, PhD Kay Johnson-Graham, PhD Camina Davis, MPH, MSPH	
9:00 am – 9:15 am	Break	
8:45 am – 12:45 pm	Exhibits Open	Blue Pre-Function Room
9:15 am – 12:30 pm	General Sessions-Research	Blue Room
9:15 am – 10:45 am	General Session I: Cancer Prevention Research	
10:45 am – 11:00 am	Break	
11:00 am – 12:30 pm	General Session II: Genomic Research	Blue Room
12:45pm – 2:00 pm	Herbert W. Nickens Memorial Lectureship Luncheon	Regency Ballroom
2:00 pm – 2:30 pm	Break	
2:00 pm – 6:00 pm	Exhibits Open	Blue Pre-Function Room
2:30 pm – 4:30 pm	General Session III: Translational and Clinical Trials Research (for Students not presenting orals)	Blue Room
4:00 pm – 4:30 pm	Student Oral Orientation	Council Room

4:30 pm – 4:45 pm	Break Take a break and take your seat. Refreshments will be served in Student Orals presentation rooms.	
4:45 pm – 6:00 pm	Student Orals (All Students Must Attend)	Congressional A and B
6:00 pm	Adjourn (Dinner on your own)	

Friday, April 21, 2006
DAY OF DELIVERY

6:00 am – 7:00 am **“Exercise Your Way to Good Health”**



There will be something for everyone regardless of your physical condition

Get Up and Get Out – Parkview Entrance

We will power walk in the park one day and on another day visit giant pandas Mei Xiang, Tian Tian and the new baby, Tai Shan, at the National Zoo.

Native Morning Exercises – Diplomat Terrace

We will do stretching, then some traditional Native dancing and other fun rez style movements. These exercises will be augmented by descriptions of the history of the dances, variations by regions and cultural perceptions.

Survivors Exercises – Bird Cage Walk

We encourage all survivors to join us in an early morning activity of free spirited exercises.

7:00 am – 7:00 pm	Registration	West Conference Registration Desk
7:00 am – 7:30 am	Breakfast	Regency Ballroom
7:30 am – 8:45 am	National Marrow Donor Program Donor Meets Recipient	Regency Ballroom
8:45 am – 9:00 am	Break	
8:45 am – 12:45 pm	Exhibits Open	Blue Pre-Function Room
9:00 am – 10:45 am	General Session I: Advocating for an Equitable Workforce	Blue Room
10:45 am – 11:00 am	Break	
11:00 am – 12:30 pm	General Session II: DHHS Committed to Eliminating Disparities	Blue Room
12:30 pm – 12:45 pm	Break	
12:45 pm – 2:15 pm	Susan M. Shinagawa Award Luncheon Awards Ceremony	Regency Ballroom
2:30 pm – 3:00 pm	Break	

Student Mentoring Program

2:15 pm – 5:30 pm	Exhibits Open	Blue Pre-Function Room
2:30 pm – 3:15 pm	“Rap with a Survivor” Dialogue between Students and Cancer Survivors <i>Moderator:</i> Col (Ret) James E. Williams, Jr., MS, SPHR	Palladian Ballroom
3:30 pm – 5:30 pm	Round Table Discussions with Bio-Scientists and Behavioral Scientists <i>Moderator:</i> Frank Talamantes, PhD	Palladian Ballroom
5:45 pm	Adjourn	
7:00 pm – 9:30 pm	HOPE & Height Award Celebration (Cultural Attire)	Ambassador Ballroom

Saturday, April 22, 2006

THE DAY BEFORE AND THE DAY AFTER

6:00 am – 7:00 am **“Exercise Your Way to Good Health”**

There will be something for everyone regardless of your physical condition

Get Up and Get Out – Parkview Entrance

We will power walk in the park one day and on another day visit giant pandas Mei Xiang, Tian Tian and the new baby, Tai Shan, at the National Zoo.

Native Morning Exercises – Diplomat Terrace

We will do stretching, then some traditional Native dancing and other fun rez style movements. These exercises will be augmented by descriptions of the history of the dances, variations by regions and cultural perceptions.

Survivors Exercises – Bird Cage Walk

We encourage all survivors to join us in an early morning activity of free spirited exercises.

7:00 am – 1:00 pm	Registration	West Conference Registration
7:00 am – 7:30 am	Breakfast	Regency Ballroom
7:30 am – 8:30 am	Patient Navigator Program: Lesson Learned from the Native American Patient Navigation Program Pilot	Regency Ballroom
8:30 am – 8:45 am	Break	
8:45 am – 1:00 pm	Exhibits Open	Blue Pre-Function Room
9:15 am – 10:30 am	Navigating the Course to Graduate and Professional Schools <i>Moderator:</i> James L. Phillips, MD	Room to be Announced

10:30 am – 11:00 am	“A Call to Action” Collegiate Cancer Council Ahmed Al-Kalla University of Houston	
11:00 am – 11:15 am	Break	
11:15 am – 12:15 pm	Motivational Speaker: Steve Fitzhugh, M.Div National Spokes Person for the Fellowship of Christian Athletes Former NFL - Denver Bronco	
12:15 pm – 1:00 pm	Break	
12:15 pm – 1:00 pm	Poster Set up and Lunch (Students Presenting Posters Only)	Regency Ballroom
1:00 pm – 3:30 pm	Great American Poster Picnic (Lunch for all students)	Regency Ballroom
	Student Mentoring Program Jury <i>Chair:</i> Marian Johnson-Thompson, PhD	Forum Room
3:30 pm – 5:00 pm	General Session III: The Burden of Cancer	Blue Room
5:00 pm	Adjourn	
7:00 pm – 7:30 pm	Gala Reception	Ambassador Ballroom
7:30 pm – 9:30 pm	LaSalle D. Leffall Jr. Gala	Regency Ballroom

Student Mentoring Program

Sunday, April 23, 2006

SURVIVORSHIP AND SPIRITUALITY

8:45 am – 9:30 am	Breakfast & Student Feedback and Critique Elizabeth A. Patterson, MD, FACR National Medical Association	<i>Room to be determined</i>
9:30 am – 10:00 am	Spirituality and Song Ms. Renee Barnes Alumna, Duke Ellington Choir	<i>Regency Ballroom</i>
10:00 am – 11:30 am	“The Importance of Caregiving in Survivorship”	
11:30 am – 11:45 am	Closing Remarks Pamela K. Brown, MPA Symposium Chair Closing Prayer for a safe journey and good health Joseph Enos Spiritual Counselor Gila River Healthcare Corporation of the Gila River Indian Community	
12:00 pm	Officially Adjourned	

Safe Journey Home

Student Participants

ARIZONA STATE UNIVERSITY

FACULTY MENTOR
Stephen R. Livingston, BES

STUDENTS
Brooklynn, Dee A.
Cling, Ancita
Dia, Lapriel L.
Huff, Candace S.
Weaver, Amber Renee
Webster, Taren Lee
Zahne, Kim Rae

BAYLOR UNIVERSITY

FACULTY MENTOR
Marva Mizell Price, DrPH, RN, FAAN

STUDENTS
Ike, Kenneth
Wilson, Rickesha

CALIFORNIA STATE UNIVERSITY

DOMINQUEZ HILLS

FACULTY MENTOR
Thomas Landefeld, PhD
Debra Weaver

STUDENTS
Dauda, Deborah
Ujadughele, Nicole
Williams, Terri

CALIFORNIA STATE UNIVERSITY

EAST BAY

FACULTY MENTOR
Eavon Wong-King, PhD, MPH, LCSW

STUDENTS
Guerrero, Carlos
Han, Sue
Wang, Dennis
Wen, Mindy

CHAMINADE UNIVERSITY OF

HONOLULU

FACULTY MENTOR
Patti Lee Robinson, MPH

STUDENTS
Ada, Billy Joe
Alusha, Alexis
Gibson, Brianna
Kahue, Charissa
Lovelyn, Romero
Uto, Jeremy

CHENYNEY UNIVERSITY OF PENNSYLVANIA

FACULTY MENTOR
Bior Abdel, PhD

STUDENTS
Acolatse, Efui
Brice, Michline
Cole, Karen, "Batul"
Edwards, Raamah
Gilbert, Kennisha
Hebron, Michaeline
Ingram, Clarence
Walker, Stanley

GRADUATE SCHOOL OF BIOMEDICAL SCIENCES

FACULTY MENTOR
Lovell A. Jones, PhD

STUDENTS
Rivera, Nilsa

HAMPTON UNIVERSITY

FACULTY MENTOR
Alfred P. McQueen, PhD

STUDENTS
Johnson, Marquis
Stevenson, Marcus D.

MOREHOUSE COLLEGE

FACULTY MENTOR
Ajit Samarasinghe, PhD

STUDENTS
Gaffney II, Vandy T.
Gilleylen, Jason W.
Head, Ronald H.
Martin, Aldwin, T.

MOUNT ST MARY'S COLLEGE

FACULTY MENTOR
Kelly McGoldrick, PhD

STUDENTS
Aguilar, Johanna
Ochoa, Carmen
Park, Migi
Vue, Pa

NORTH CAROLINA CENTRAL UNIVERSITY

FACULTY MENTOR
Marva Mizell Price, DrPH, RN, FAAN

STUDENTS
Boykin, Shesee D.
Echols, Phylicia
Ferguson, Taylor
Killen, Princess
Moore, Keesha M.

NORTHERN ARIZONA UNIVERSITY

FACULTY MENTOR
Diane Sterns

STUDENTS
Begay, Marlene
Davis, Danita
Francis, Ronda
Lencinas, Alex
Martinez, Sheryl
Nez, Priscilla
Pusher, Annette
Zamorano, Angel

NORTHWEST INDIAN COLLEGE

FACULTY MENTOR
Dan Woods

STUDENTS
Dawn, Karla
Elliott, Randy
Oreiro, Jennifer
Oreiro, Tyson
Star, Leona
Urbanec, LaBelle

PRAIRIE VIEW A&M UNIVERSITY

FACULTY MENTOR
Laura Carson, PhD
E. Gloria C. Regisford

STUDENTS
Anderson, Dorian
DeLouis, Windlyne
Edigin, Osaymen
Hunter, Charles J.
Iyamu, Michael A
Jules, Maurice L.
Mbah, Geoffrey
Milton, Nicole
Ovu, Steve E
Reynolds, Aurellia J.
Small, Jessica
Villafranco, Brenda
Young, Ayana

Student Participants

RICE UNIVERSITY

FACULTY MENTOR
Nicholas Iammarino, PhD

STUDENTS

Bridges, Jason
Diep, Cassandra
Disch, Christine
Griggs, Moreko
Sai Rao
Seaton-Larry, Felicia

TEXAS A&M UNIVERSITY

FACULTY MENTOR
Jeffrey Guidry, PhD
Gail R. Townsend

STUDENTS

Bates, Cedrick
Burnell, Whitney G.
Flores, Raquel
Gendrett, Ashley J.
Greggs, Schylr
Long, Jennifer
Pierce, Denise
Purvis, Brittne

TEXAS SOUTHERN UNIVERSITY

FACULTY MENTOR
Yvonne H. Hogan

STUDENTS

Mbah, Noella
Mosley, Labreia
Moten, A' Chundreus
Onadri, Alexander
Rodriquez, Aries
Stanford, Annette
Vo, Richard

UNIVERSITY OF ALASKA, FAIRBANKS

FACULTY MENTOR
Elaine M. Drew, PhD

STUDENTS

Altland, Emily
Church, Rebecca
Harper, Genevieve
Staheli, Zazell

UNIVERSITY OF ARIZONA

FACULTY MENTOR
Athena R. Ganchorre

STUDENTS

June, Cory
Lopez, Andrew
Parrish, Charlene
Savala, Shelley
Soap, Julia
Zowman, Xazmin

UNIVERSITY OF HAWAII AT MANOA

FACULTY MENTOR
Maile S. Goo, PsyD

STUDENTS

Chow, Kaimana
Doyle, Sean
Garrido, Ann
Hoang, Kim
Pilar, Mark
Wong, Dayton

UNIVERSITY OF HOUSTON

FACULTY MENTOR
Christopher Miller, BS

STUDENTS

Al-Kalla, Ahmed
Caga-Anan, Glynda
Cedillo, Cindy
Evans, James
Gomez, Adam
Halphen, Charity
Igbinoso, Irogue
Laws, Aliya
Luo, Lan
Scott, Stephen

UNIVERSITY OF KENTUCKY

FACULTY MENTOR
Linda J. Alexander, PhD
John S. Wiggs, PhD

STUDENTS

Abernathy, Shira
Abualsoud, Arwa
Blackmon, Ebony
Elmaraghi, Arwa
McDoon, Mahada
Pack, Jr., Rickey
Powell, Emerald
Rogers, Johnathan

UNIVERSITY OF TEXAS AT EL PASO

FACULTY MENTOR
Juan C. Noveron, PhD

STUDENTS

Arzola, Alejandro
Bualle, Nadine
Cruz, Fabiola
Cruz, Itzia
Jimenez, Araceli
Rodriguez, Lonel

UNIVERSITY OF WASHINGTON

FACULTY MENTOR
Rosalina James, PhD

STUDENTS

Ambrose, Brandon Cy
James, Pamela
Morigeau, Ryan Arthur
Noyes, Emma Elizabeth
Selam, Stephen Paul
White, Christina Cecilia

VIRGINIA STATE UNIVERSITY

FACULTY MENTOR
Shobha Sriharan, PhD

STUDENTS

Batiste, Carmen
Denloye, Titi
Long, III, Wilbert
Mann, Brenda
Owens, Ashley
Sexena, Tarun
Wimbush, Shevish

Note: the Student Participant List does not reflect changes made after March 31, 2006

Symposium Special Events

◆ BREAKFAST SESSIONS ◆



Thursday, April 20, 2006

7:30 am - 9:00 am ◆ Regency Ballroom

CELEBRATING BREAST CANCER RESEARCH

Moderator

Cheryl Kidd, MPH

The Susan G. Komen Breast Cancer Foundation

Success Stories From Our Communities

Paula A. Espinoza, PhD
University of Colorado

Holly L. Kiger, RN, MN
Center for Health Aging, California

Amari Sokoya Pearson-Field, MPH, PhD
Mautner Project

Susan K. Hoppough, PhD, RN
The Lacks Cancer Center at Saint Mary's
Health Care

Patricia A. Valverde, MPH
University of Colorado

Supported by an Educational Grant from



Friday, April 21, 2006

7:30 am - 9:00 am ◆ Regency Ballroom

DONOR MEETS RECIPIENT

Moderator

Isaac Fordjour

Outreach coordinator for African American
Recruitment and Education
National Marrow Donor Program

Supported by Educational Grants from

Genentech
IN BUSINESS FOR LIFE



Symposium Special Events

◆ BREAKFAST SESSIONS ◆



Saturday, April 22, 2006

7:30 am - 8:30 am ◆ Regency Ballroom

PATIENT NAVIGATOR PROGRAM: LESSON LEARNED FROM THE NATIVE AMERICAN PATIENT NAVIGATION PROGRAM PILOT

Moderator

Roland Garcia, PhD
Center to Reduce Health Disparities
National Cancer Institute

Patient Navigator Panelists:

Joshua Jones, MD
Northwest Portland Area India Health Board

Christine Merenda BSN, RN, OCN
Yakama Indian Health Center

Amanda Greene, PhD, MPH, RN
NOVA Research Company

Katrina Ramsey, BA
Northwest Portland Area India Health Board

Lucy De Los Santos
Yakama Survivor

Supported by Educational Grants from



Sunday, April 23, 2006

9:00 am - 12:00 pm ◆ Regency Ballroom

SURVIVORSHIP AND SPIRITUALITY

Chair

Col (Ret) James E. Williams, Jr., MS, SPHR

Vice Chair

Ivis Febus-Sampayo

Spirituality and Song

Ms. Renee Barnes
Alumna, Duke Ellington Choir

Presentation

The Importance of Caregiving in Survivorship

Supported by Educational Grants from



**HERBERT W. NICKENS MEMORIAL
LECTURESHIP LUNCHEON**

**Thursday, April 20, 2006 ♦ 12:45 pm – 2:00 pm
Regency Ballroom**

THE INTERCULTURAL CANCER COUNCIL
in conjunction with
The Mary Babb Randolph Cancer Center and Schering-Plough

Request your presence at the
Fourth Annual Herbert W. Nickens Memorial Lectureship

Chair

James L. Phillips, MD

Vice Chair

Patrice Desvigne-Nickens, MD

Honoree

Donald Coffey, PhD
Johns Hopkins University, School of Medicine

Supported in part by educational grants from



MARY BABB RANDOLPH CANCER CENTER
West Virginia University



SUSAN MATSUKO SHINAGAWA CANCER CONTROL LEADERSHIP AWARD LUNCHEON

A CELEBRATION OF LIFE!



**Friday, April 21, 2006 ♦ 12:45 pm – 2:15 pm
Regency Ballroom**

Honorary Chair

Susan Matsuko Shinagawa
Two-time Primary/Recurrent Breast Cancer “Thriver”

Co-Chairs

Mary Bennett, MFA
Andy Miller, MHES, CHES

Remarks

Senator Dianne Feinstein, California

Awards Ceremony

Susan Matsuko Shinagawa Annual Award Honoree:

Dileep G. Bal, MD, MS, MPH
District Health Officer
Hawaii Department of Health

Musical Selection "My Heroes"
By Susan Matsuko Shinagawa

Supported by an educational grant from



HOPE & HEIGHT AWARDS CELEBRATION

Friday, April 19, 2006 ♦ 7:00 pm – 9:00 pm

Don't Miss it!

Celebrate a joyous evening featuring a multicultural buffet dinner and entertainment program.

Chairs

Alexine Clement Jackson
David W. Wetter, PhD

Mistress of Ceremony

Andrea Roane
CBS WUSA
Washington, DC

Special Performances by:

The Readers Theaters
On Borrowed Time; Creativity and Healing

Ashley Jordan Mandanas
Vocalist

Joseph Enos
Spiritual Counselor

Gila River Healthcare Corporation of the Gila River Indian Community

Honoring the HOPE Award Recipients

The Gila River Cancer Support Group

Martha Haley

Wendy Yoo

Victor Kaiwi Pang

Melissa Thomas

2006 Dorothy I. Height Lifetime Achievement Award

Harold P. Freeman, MD
Medical Director

Ralph Lauren Center for Cancer Care and Prevention

Regency Ballroom
OMNI Shoreham Hotel
Washington, DC

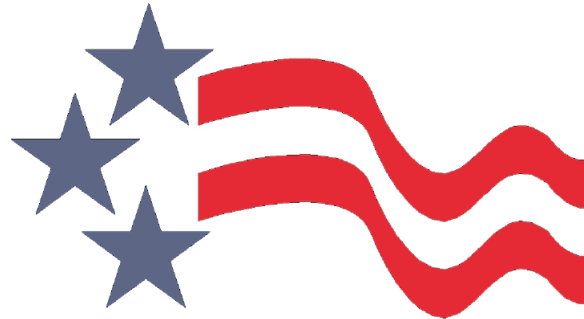
Traditional native or cultural attire suggested

Supported in part by educational grants from



THE UNIVERSITY OF TEXAS
MD ANDERSON
CANCER CENTER

THE GREAT AMERICAN POSTER PICNIC



Saturday April 22, 2006 ♦ 1:00 pm – 3:30 pm
Regency Ballroom

The Great American Poster Picnic
A Family Tradition

Co-Chairs
Richard Hajek, PhD
Frank Talamantes, PhD

Supported by Educational Grants from





LaSALLE D. LEFFALL, JR. AWARDS BANQUET & GALA

Saturday, April 22, 2006 ♦ 7:00 pm – 9:30 pm
Regency Ballroom



LaSalle D. Leffall, Jr. Awards Reception and Banquet & Gala

Co-Chairs

Barbara Sapp Davis, RN, BSN, ONOR
National Association for Advancement of Colored People

Thomas Horvath, MD
Chief of Staff, Houston VA Medical Center

Mistress and Master of Ceremonies

Jan and Sam Donaldson
ABC News

Award Presentations

Student Scholars Awards Presentation

Edward L. Reed Memorial Student Scholarship

Recipient

David "Andy" Clump, II
West Virginia University

Rededication Presentation

Special Guest Presenter

Nancy Wilson, Song Stylist

Acceptance Remarks

LaSalle D. Leffall, Jr., MD, FACS

Intercultural Cancer Council Recognition Award

Presenter

Armin D. Weinberg, PhD
Baylor College of Medicine

Honoree

Lovell A. Jones, PhD
The University of Texas M. D. Anderson Cancer Center

2006 Leap of Faith Award

Honoree

James W. Hampton, MD, FACP
Troy and Dollie Smith Cancer Center
University of Oklahoma

2006 LaSalle D. Leffall, Jr. Cancer Prevention and Control Award

Honoree

Judith Salmon Kaur, MD
Mayo Clinic College of Medicine

Reception at seven o'clock in the evening

Banquet at seven-thirty in the evening

Cocktail attire suggested

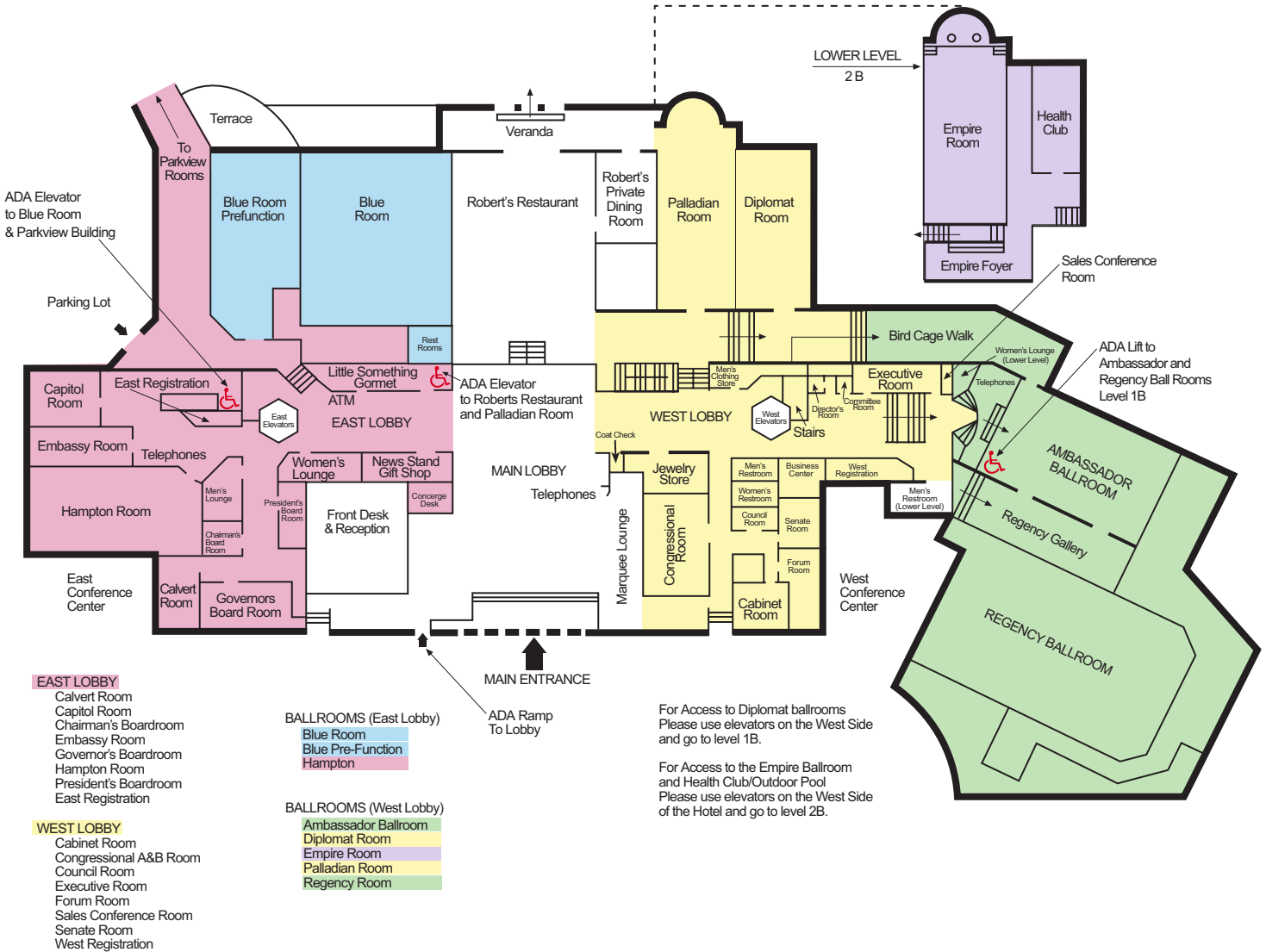
Supported by a grant from



The Susan
G. Komen
Breast Cancer
Foundation

American Cancer Society
American Legacy Foundation
Cancer Control PLANET
**Centers for Disease Control and Prevention/Division of Cancer Prevention
and Control**
Congressionally Directed Medical Research Programs (CDMR) (US Army)
Intercultural Cancer Council
National Breast Cancer Coalition
National Cancer Institute
NIH Office of Loan and Repayment and Scholarships
Ortho-Biotech Products
Patient Advocate Foundation
Sister Study
St. Jude Children's Research Hospital
**The Diversity Enhancement Program, James Cancer Hospital and Solove
Research Institute-Ohio State University**
The Susan G. Komen Breast Cancer Foundation
The Wellness Community
University of California at San Francisco, Nursing Press
Vetas Healthcare Corporation
Y-ME National Breast Cancer Organization

OMNI SHOREHAM HOTEL



Special/Disabled Access Routes to Meeting Rooms Omni Shoreham Hotel • Washington, DC

Regency and Ambassador Ballrooms

Take the West Elevators to floor 2B. Follow overhead signs to the Regency Ballroom. A wheelchair lift to the Ballroom level is available at the top of the stairs.

Diplomat Ballroom

Take the West Elevators to floor 1B. Go first to the right and then to the left.

Palladian Ballroom

Take the service elevators located across from the Gift Shop and next to the Gourmet-to-go to the B1 level. Turn to the right and proceed across the stairway leading to Robert's Restaurant, staying to your right and continue down the hallway to the Palladian Ballroom.

Blue Prefunction Room and Blue Room

Please note that the only entrance to the Blue Room is through the Blue Prefunction Room.

Go through East Promenade and bear left at East Elevators. Continue down hallway past East Registration Desk on your right and turn right at end of hallway. Turn right again and take the service elevator on left down one level to "L". The elevator will open on the opposite side from where you entered. Turn right once out of elevator and enter hallway marked "Lobby". Blue Prefunction Room and the entrance into the Blue Room will be on your left.

10TH BIENNIAL SYMPOSIUM ON MINORITIES, THE MEDICALLY UNDERSERVED & CANCER

April 19-23, 2006 • OMNI Shoreham Hotel • Washington, DC



National Cancer Institute
(Grant # 1 R13 CA113028-01)

National Cancer Institute
National Human Genome
Research Institute
National Institute of General
Medical Sciences

