

COUP D'OEIL

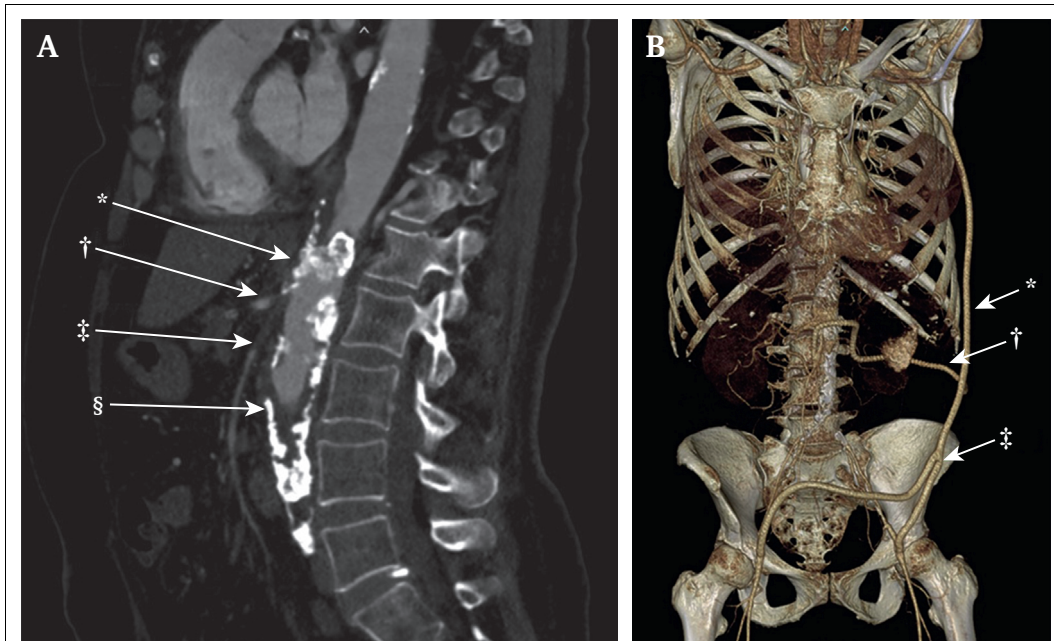
Axillo-Superior Mesenteric Artery—Bifemoral Bypass: An Extraordinary Bypass!

Jaleesa R.E. Daans^a, Flores M. Metz^{a,b,c,*}

^a Department of Vascular Surgery, Medisch Spectrum Twente, Enschede, The Netherlands

^b Dutch Expert Centre for Gastrointestinal Ischaemia, Enschede, The Netherlands

^c Multi-Modality Medical Imaging Group, TechMed Centre, University of Twente, Enschede, The Netherlands



A 66 year old patient who had an axillobifemoral bypass for Fontaine IV presented with end stage chronic mesenteric ischaemia. Computed tomography angiography revealed a significant external compression of the coeliac trunk (A^{*}†) combined with atherosclerotic occlusion of the superior mesenteric artery (SMA) (A[‡]) and an infarenal aortic-bi-iliac occlusion (A[§]). The patient's anatomy made antegrade or retrograde stenting challenging. Comorbidities contraindicated an open reconstruction. This case was successfully treated by extending the axillo-bifemoral bypass (B^{*}†) with a polytetrafluoroethylene bypass (Propaten, WL Gore & Associates, Flagstaff, AZ, USA) retroperitoneally tunnelled to the SMA (B[†]).

* Corresponding author. Multi-Modality Medical Imaging Group, TechMed Centre, University of Twente, Enschede, The Netherlands.

E-mail address: flores.metz@mst.nl (Flores M. Metz).

1078-5884/© 2024 The Authors. Published by Elsevier B.V. on behalf of European Society for Vascular Surgery. This is an open access article under the CC BY license (<http://creativecommons.org/licenses/by/4.0/>).

<https://doi.org/10.1016/j.ejvs.2024.03.031>