



**Aalborg Universitet**

**AALBORG UNIVERSITY**  
DENMARK

## **Subject-specific Musculoskeletal Simulation of Hip Dislocation Risk in Activities of Daily Living**

Rasmussen, John; Bichler, Raphael; Tørholm, Søren; Renkawitz, Tobias; Wirix-Speetjens, Roel; Dendorfer, S.

*Published in:*

Transactions of the 57th annual meeting of the Orthopaedic Research Society

*Publication date:*  
2011

*Document Version*  
Early version, also known as pre-print

[Link to publication from Aalborg University](#)

*Citation for published version (APA):*

Rasmussen, J., Bichler, R., Tørholm, S., Renkawitz, T., Wirix-Speetjens, R., & Dendorfer, S. (2011). Subject-specific Musculoskeletal Simulation of Hip Dislocation Risk in Activities of Daily Living. In *Transactions of the 57th annual meeting of the Orthopaedic Research Society* Orthopaedic Research Society. Orthopaedic Research Society. Transactions of the Annual Meeting

### **General rights**

Copyright and moral rights for the publications made accessible in the public portal are retained by the authors and/or other copyright owners and it is a condition of accessing publications that users recognise and abide by the legal requirements associated with these rights.

- ? Users may download and print one copy of any publication from the public portal for the purpose of private study or research.
- ? You may not further distribute the material or use it for any profit-making activity or commercial gain
- ? You may freely distribute the URL identifying the publication in the public portal ?

### **Take down policy**

If you believe that this document breaches copyright please contact us at [vbn@aub.aau.dk](mailto:vbn@aub.aau.dk) providing details, and we will remove access to the work immediately and investigate your claim.

# Subject-specific Musculoskeletal Simulation of Hip Dislocation Risk in Activities of Daily Living

**John Rasmussen**, Department of Mechanics and Production, Aalborg University, Denmark.

**Raphael Bichler**, BMW Group, Munich, Germany.

**Søren Tørholm**, AnyBody Technology, Aalborg, Denmark.

**Tobias Renkawitz**, Department of Orthopedic Surgery, Regensburg University Medical Center, Regensburg, Germany.

**Roel Wirix-Speetjens**, Materialise, Leuven, Belgium.

**Sebastian Dendorfer**, AnyBody Technology, Aalborg, Denmark.

## Initiating problem

Risk of dislocation in THR patients during activities of daily living, for instance car ingress/egress.

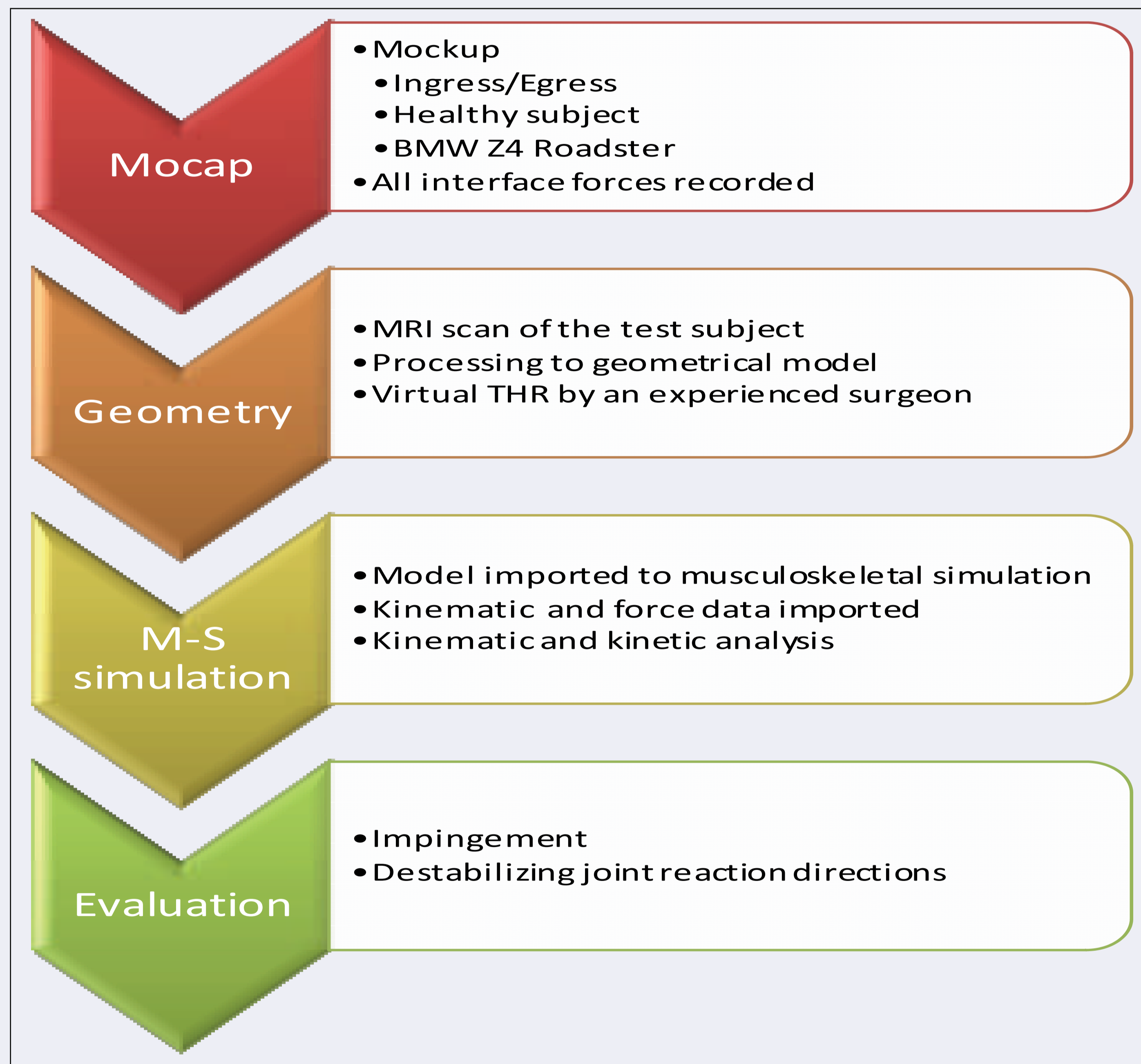
## Possible causes

- Impingement may dislocate the joint via a crowbar effect. Impingement is also correlated to pain, increased wear and early revision.
- Joint reactions pointing out of the acetabulum may dislocate the joint.

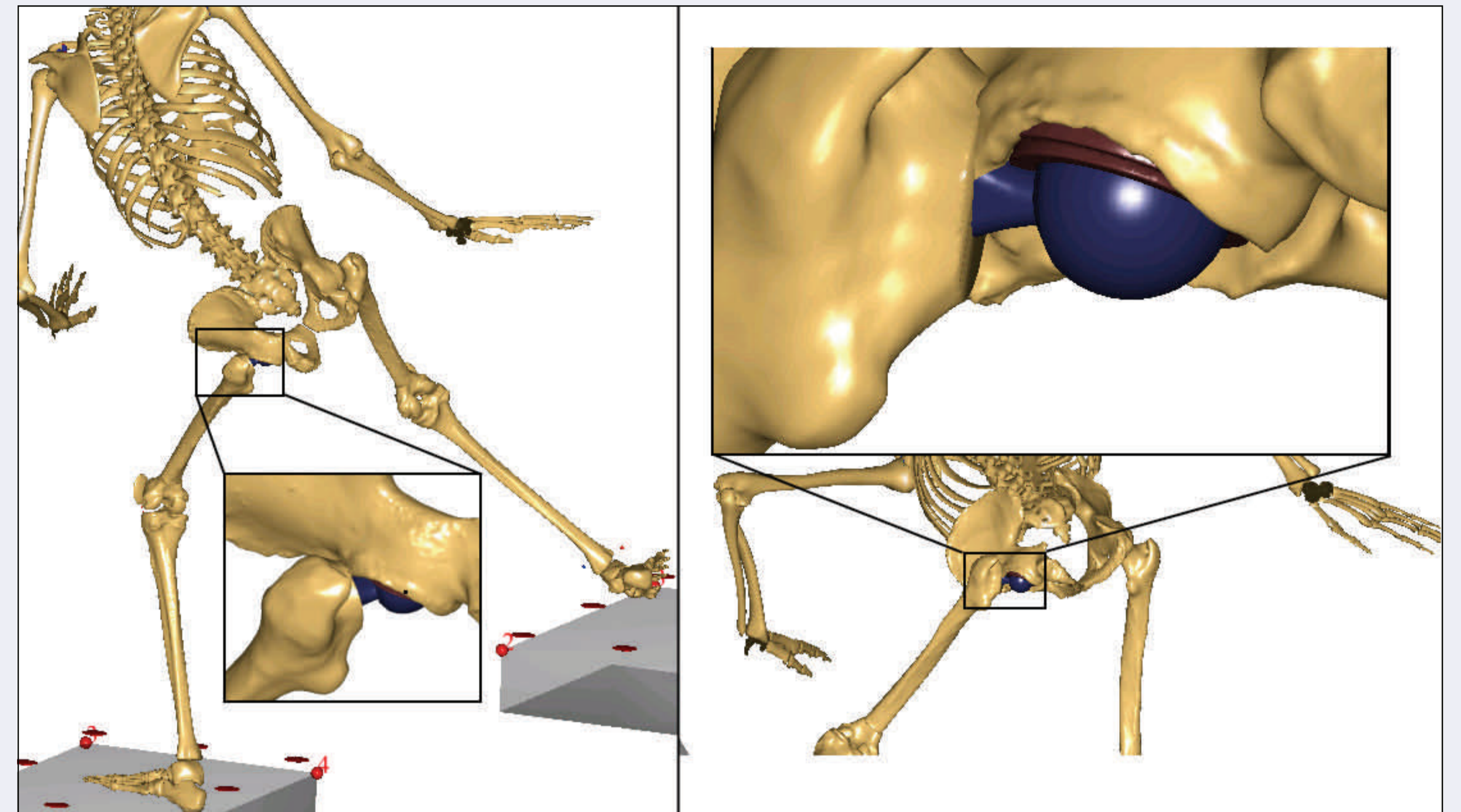
## Technology

- Mockup of a BMW Z4 Roadster allowing for line-of-sight for cameras.
- Basler camera system with Kistler force platforms and Simi Motion software.
- MRI scan performed at Medizinisches Versorgungszentrum (Regensburg, Germany)
- Segmentation of MRI data, 3D model reconstruction and virtual implantation of 32 mm THR performed with Mimics, Materialise, Leuven, Belgium.
- Kinematic processing and musculoskeletal analysis by the AnyBody Modeling System, AnyBody Technology, Aalborg, Denmark.

## Methods

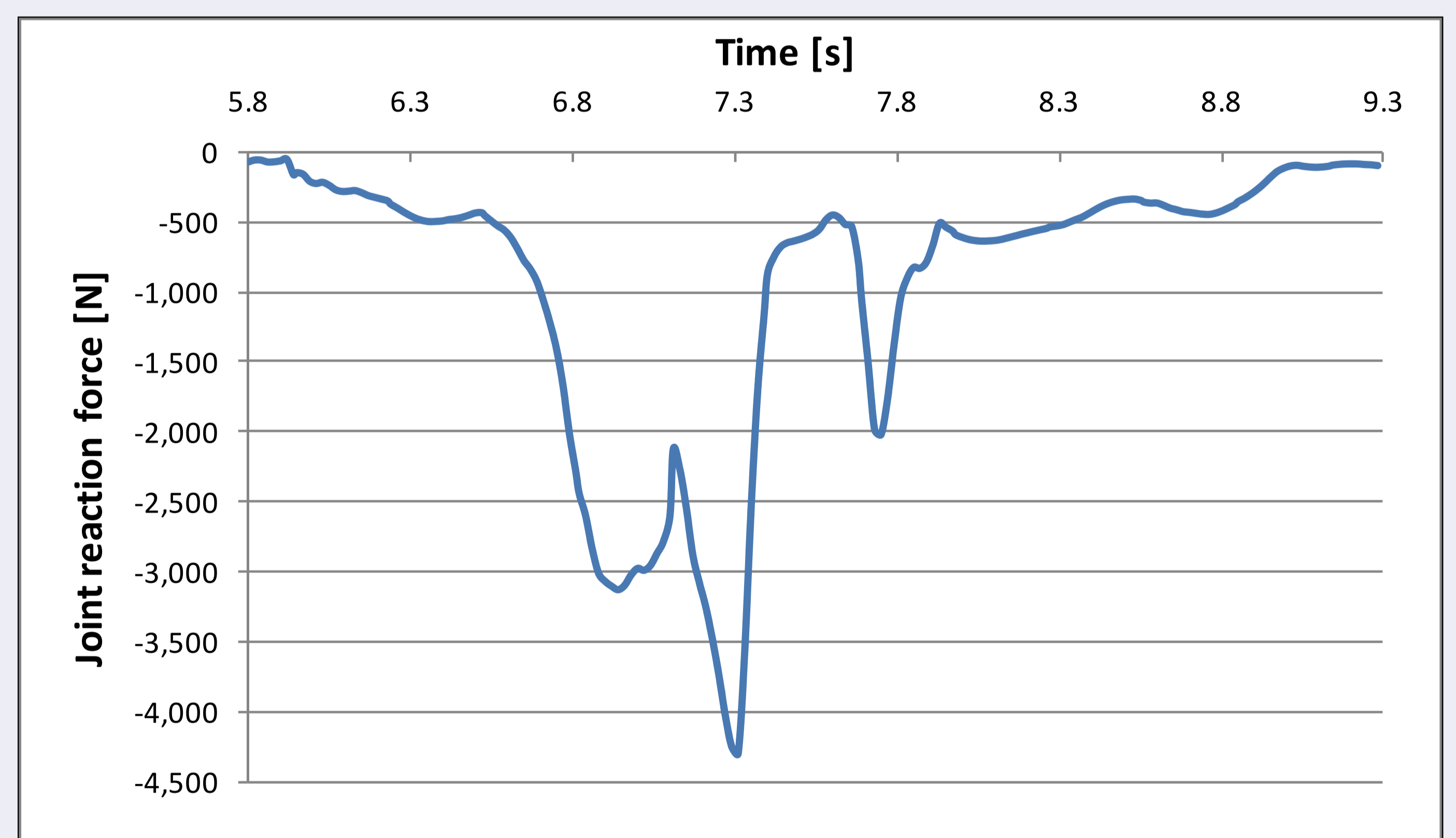


## Kinematic results



(Muscles omitted for clarity): Two of several detected cases of impingement. Left: Collision between the sectioned surface of the femur and the rim of the acetabulum. Right: Collision between the neck of the prosthesis and the rim of the cup.

## Kinetic results



Simulated hip joint reaction force projected to the direction perpendicular to the surface spanned by the cup rim. Negative values are stable, so no instability due to joint reaction forces are detected.

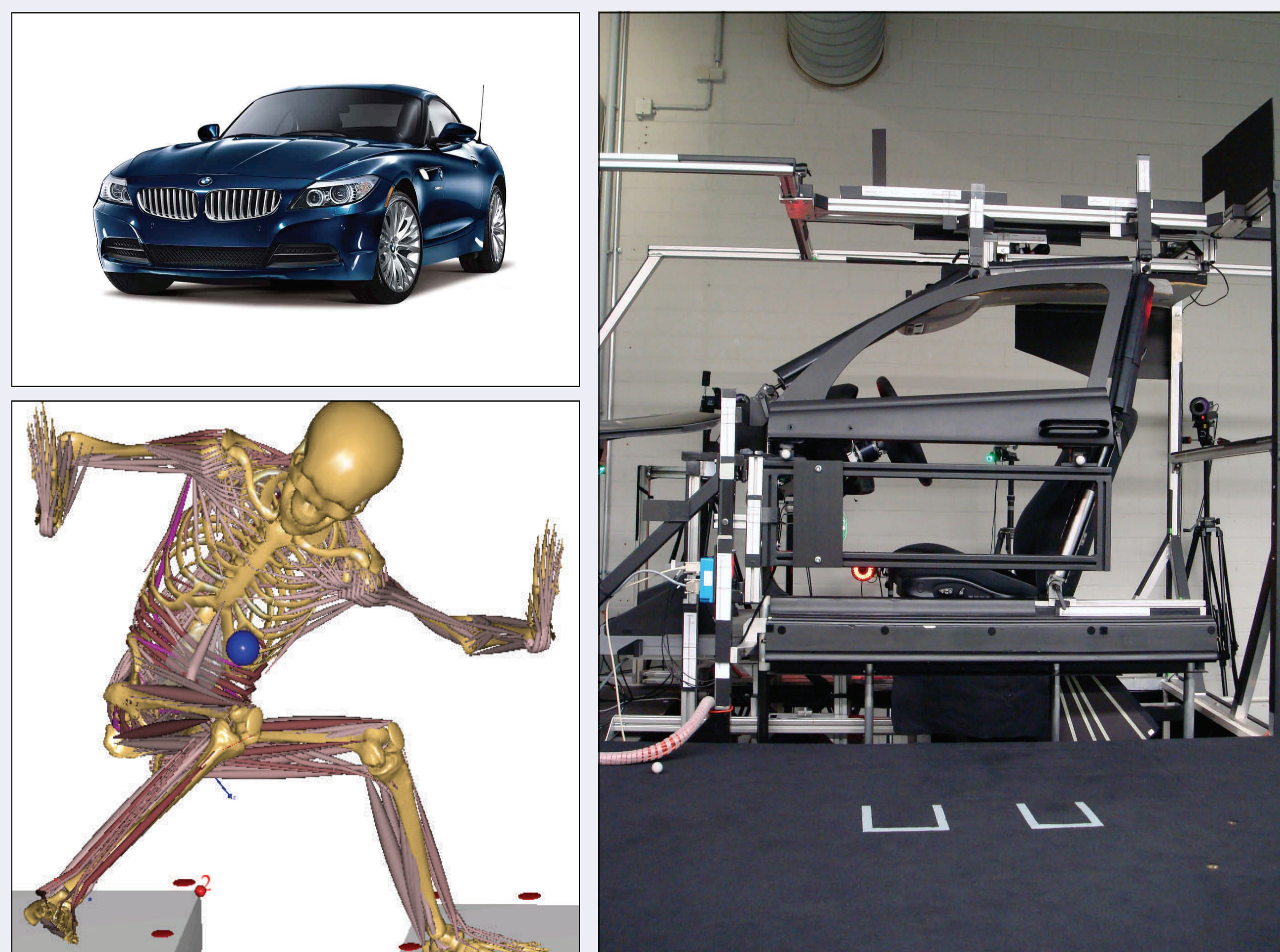
## Conclusions

- The recorded movement for a healthy individual will lead to **risk of dislocation due to impingement** for a THR patient.
- The kinetic analysis detects **no dislocation due to net joint forces**.
- The combination of motion analysis of activities of daily living and detailed musculoskeletal models can be used to assess dislocation risks and design implants and implantation variables to minimize the risk.

**Systematic simulation of activities of daily living in combination with design and implantation parameter variations may lead to implants less susceptible to dislocation.**

## Poster # 0306

Session 12 - Hip and Knee Disease Process: Joint Mechanics.  
Orthopedic Research Society, Annual Meeting 2011, Long Beach, CA.



BMW Z4 Roadster, Experimental Mockup and Musculoskeletal Model.

This work was supported by the Danish Advanced Technology Foundation.