



SOCIETÀ
SCIENTIFICA
DI MEDICINA
INTERNA
FADOI
FEDERAZIONE
DELLE ASSOCIAZIONI
DEI DIRIGENTI
OSPEDALIERI
INTERNISTI

Italian Journal of Medicine

A case of hemolytic anemia associated with interstitial lung disease, arthralgia and fever caused by *Mycoplasma pneumoniae*

David Micarelli,¹ Gianluca Santoboni,² Michela Tarnani,³ Claudio Angrisani,² Alessandra
Fiorentini,² Carlo Meschini²

¹Division of Nephrology and Dialysis, San Giovanni Evangelista Hospital, Tivoli; ²Division of
Medicine, Belcolle Hospital, Viterbo; ³Division of Hematology, Belcolle Hospital, Viterbo, Italy

Correspondence: David Micarelli, Nephrology and Dialysis Unit, San Giovanni Evangelista
Hospital, via A. Parrozzani, snc 00019 Tivoli, Italy. E-mail: david.micarelli@aslroma5.it

Key words: Interstitial lung disease; hemolytic anemia; *Mycoplasma pneumoniae*; agglutinin.

Running title: A young man with arthralgia, fever, cough, and dyspnea

Contributions: GS and DM equally contributes at manuscript. They wrote the paper, treated and
followed the patient and revisited the case. MT reviewed Blood smear. CA and CM were the
physicians of the patient and completed data and helped in writing the draft. All authors read and
signed the final paper.

Conflict of interests: the authors declare no potential conflict of interests.

Informed consent: informed consent was obtained from all individual participants included in the
study. Additional informed consent was obtained from all individual participants for whom
identifying information is included in this article.

*This article has been accepted for publication and undergone full peer review but has not been through the copyediting,
typesetting, pagination and proofreading process, which may lead to differences between this version and the final one.
Please cite this article as doi: 10.4081/ijm.2021.1416*

Abstract

Pulmonary interstitiopathies have become the most diagnosed forms of pneumonia in 2020 due to the COVID-19 pandemic. The spectrum of interstitiopathies is broad and includes idiopathic diseases and secondary forms. In April 2020, a 36-year-old man admitted to our department for arthralgias, fever, asthenia, cough, and dyspnea. In January 2020 fever, cough, arthralgias and asthenia appeared. In April, his general condition worsened with development of macrohematuria, malaise, and intense asthenia. On admission, the patient presented pale, asthenic and symptomatic for dyspnea and arthralgias. There was objective joint pain in the small joints of the hands, elbow, and knees with morning stiffness and decreased strength. CT of the chest documented ground-glass opacities in both lung fields. He performed 2 swabs for SARS-CoV2, which were negative. On hematochemical examination: IgM 332 mg/dL and ferritin 700.2 ng/ml. At venous blood smear peripheral venous blood, agglutination of erythrocytes. The serology (IgM) for *M. Pneumoniae* was positive with agglutinins in the serum; Doxaciolina was started. There was a progressive normalization of hemoglobin levels and cold agglutinins were gradually reduced and were no longer detected at 15 days after the start of treatment. At one month after discharge, pulmonary function had fully recovered and the picture of hemolytic anemia was resolved.

Introduction

The interstitial lung diseases (ILDs), are a heterogeneous group of disorders classified together because of similar clinical manifestations and imaging findings (1). ILDs spectrum is broad and includes idiopathic and secondary forms. The development of secondary ILDs can be associated with a broad range of systemic diseases (rheumatic diseases, uremia, a congenital inborn error of metabolism), exposures to inhaled inorganic and organic dust, infectious agents, and drugs. Correct diagnosis is fundamental and the treatment choices and prognosis are different among all the different types of ILD. Interstitial lung disease became the most diagnosed type of lung disease in 2020 because of the eruption of COVID-19 as a breakthrough of SARS-CoV-2 in Wuhan. (2) Since then, there has

been an important shift in epidemiology, etiology, and outcome of ILDs.

Here we report a really uncommon case of a young man with cough, fatigue, fever, and arthralgia.

Case Report

In April 2020, a 34-year-old Caucasian man was admitted to our ward because of arthralgia, fever, fatigue, cough, and dyspnea. The patient had been well until January 2020 when suddenly appeared high-grade fever, cough, arthralgia, fatigue. His general practitioner prescribed some laboratory tests with normal results. Acetaminophen and some course of antibiotic therapy (penicillin) are administered with little improvement. In April, his general condition falls and he developed dark urine, malaise, intense fatigue, and a new flare of fever, chills, and productive cough. He presented to our hospital. On admission, the patient was pale, asthenic, and was symptomatic for dyspnea and arthralgias. Joint pain of the small joints of the hands, wrist, and knees was present, along with morning stiffness and decreased grip strength. Past clinical history was negative. Upon physical examination, blood pressure was 110/70 mmHg, pulse rate was 100/minute, respiratory rate was 22 breaths/min and the temperature was 38.7°C. Chest examination showed bilateral fine moist rales and sporadic dry rales. Chest X-ray revealed opacity in bilateral lower lobes, while abdominal ultrasound was normal. Lung CT scan revealed mediastinal and hilar lymphadenopathy, diffuse centrilobular micronodules, and patchy opacities in both lung fields with mild thickening of bronchial walls. In suspect of COVID-19, he was tested with two consecutive nasopharyngeal swab tests (PCR, confirming SARS-CoV-2 infection) but tests were negative. Laboratory testing is reported in Table 1. Liver profile, kidney profile, and coagulation studies were within normal limits. Serum electrophoresis revealed no abnormalities. Serum C3, C4, and total IgA and IgG levels were normal where IgM was 332 mg/dl. Ferritin levels were 700.2 ng/ml. Microscopic examination of the peripheral blood smear (fig. 1) revealed red cell agglutination. Direct Coombs test and cold agglutinins were positive. Additionally, ANA, ANCA, ENA, rheumatoid factor, anti-HIV, anti-hepatitis B virus, anti-hepatitis C virus, Epstein Barr virus, Cytomegalovirus, and Parvovirus B19

were absent. *M. pneumoniae* serology was positive, with specific immunoglobulin M detected in serum samples.

When the diagnosis of *M. pneumoniae* infection was established, he was also started on doxycycline. Hemoglobin levels gradually normalized. Cold agglutinins gradually decreased and are not more detected within 15 days. One month after hospital discharge, pulmonary function was fully recovered.

Discussion

Cold agglutinins were first described by Landsteiner in 1903 (6). Their pathological action against red blood cells and blood vessels was later described by Clough and Iwai (7,8). In 1953 Schubothe called this disease Cold Agglutinin Disease (CAD) (9).

M. pneumoniae causes up to 40% of cases of community-acquired pneumonias and as many as 18% of cases requiring hospitalization in children. About 25% of patients may experience extrapulmonary complications. Autoimmune reactions have been suggested to be responsible for many of these manifestations. CAD is characterized by an auto-antibody (10) which can agglutinate red blood cells (RBCs) at temperatures lower than that of the body, and subsequently to activate the complement system responsible for lysis of RBCs. Cold agglutinin antibodies are mainly specific for the RBCs membrane systems (11), and their production can be stimulated by *Mycoplasma pneumoniae* or by lymphoproliferative disorders. The auto-antibody involved is usually an IgM, which is able to agglutinate RBCs at temperatures of between 0 and 5°C. Complement activation generally occurs between 20 and 25°C, but is also possible at normal body temperature. Hemolytic anemia is recognized as a rare but severe complication of *Mycoplasma* infection. Our patient presented with anemia due to intravascular hemolysis accompanied by articular involvement. This particular effect has been described previously with infections by *Mycoplasma* (also known as “hemoplasma” in this setting) via induction of complement receptor 1 expression on erythrocytes (3). Complement receptor 1 mediates the immune adherence, a fundamental event for destroying microbes and initiating immunological responses. Hemoplasma determines hemolytic anemia mainly through complement-

mediated cell lysis but also via direct damage to the erythrocytes membrane and phagolysis by the mononuclear phagocyte system (4). Besides, some of *Mycoplasma*'s protein components share peptide sequence similarities with complement regulatory proteins and, therefore, they can modulate human complement activation (5).

The first-line treatment can be either macrolides or tetracyclines; we choose tetracyclines for the patient's history of adverse effects developed with azithromycin. In our case the response to antibiotic therapy was complete and other therapies for non-respiratory tract disease manifestations of CAD, as immunosuppressive agents, immunomodulatory therapies, or plasmapheresis, were not necessary.

Conclusions

We showed a case of ILD due to *M. pneumoniae* infection complicated by articular involvement and immune hemolytic anemia due to CAD. Especially when the imaging findings are associated with other extra-pulmonary conditions, *M. pneumoniae* should be taken into differential diagnosis in patients suspected to have COVID-19. In our case, secondary autoimmune hemolytic anemia was the trigger for correct diagnosis.

References

1. Travis WD, Costabel U, Hansell DM, King TE Jr, Lynch DA, Nicholson AG et al. An official American Thoracic Society/European Respiratory Society statement: Update of the international multidisciplinary classification of the idiopathic interstitial pneumonias. *Am J Respir Crit Care Med.* 2013 Sep 15;188(6):733-48. doi: 10.1164/rccm.201308-1483ST.
2. Zhu N, Zhang D, Wang W, Li X, Yang B, Song J, Zhao X, et al. A novel coronavirus from patients with pneumonia in China, 2019. *N Engl J Med.* 2020;382(8):727-733. doi: 10.1056/NEJMoa2001017
3. Congbin Y, Aibin L, Congli Y, Juan X, Lanjun B, Weiping Z, Zhibiao Y, Xiuguo H: Overexpression of complement receptor type I (cr1, cd35) on erythrocytes in patients with

hemoplasma infection. *Microbiol Immunol* 2010; 54: 460–465.

4. Smith BO, Mallin RL, Krych-Goldberg M, Wang X, Hauhart RE, Bromek K, Uhrin D, Atkinson JP, Barlow PN: Structure of the c3b binding site of cr1 (cd35), the immune adherence receptor. *Cell* 2002; 108: 769–780.

5. Kikkawa S, Matsumoto M, Sasaki T, Nishiguchi M, Tanaka K, Toyoshima K, Seya T: Complement activation in mycoplasma fermentans- induced mycoplasma clearance from infected cells: probing of the organism with monoclonal antibodies against m161ag. *Infect Immun* 2000; 68: 1672–1680

6. Landsteiner K: Über beziehungen zwischen dem blutserum und den korperzeller. *Munch Med Worchenschr* 1903, 50:1812.

7. Clough MC, Richter IM: A study of an autoagglutinin occuring in a human serum. *Johns Hopkins Hosp Bull* 1918, 29:86.

8. Iwai S, Mei-Sai N: Etiology of Raynaud's disease. *Jpn Med World* 1926, 6:345.

9. Schubothe H: The cold hemagglutinin disease. *Semin Hematol* 1966, 3:27.

10. Petz LD, Garraty G: *Acquired Immune Hemolytic Anemias* New York: Churchill Livingstone 1980, 63-76.

11. Geoff D: *Human Blood Groups* London: Blackwell Science Ltd 1995, 53-61.

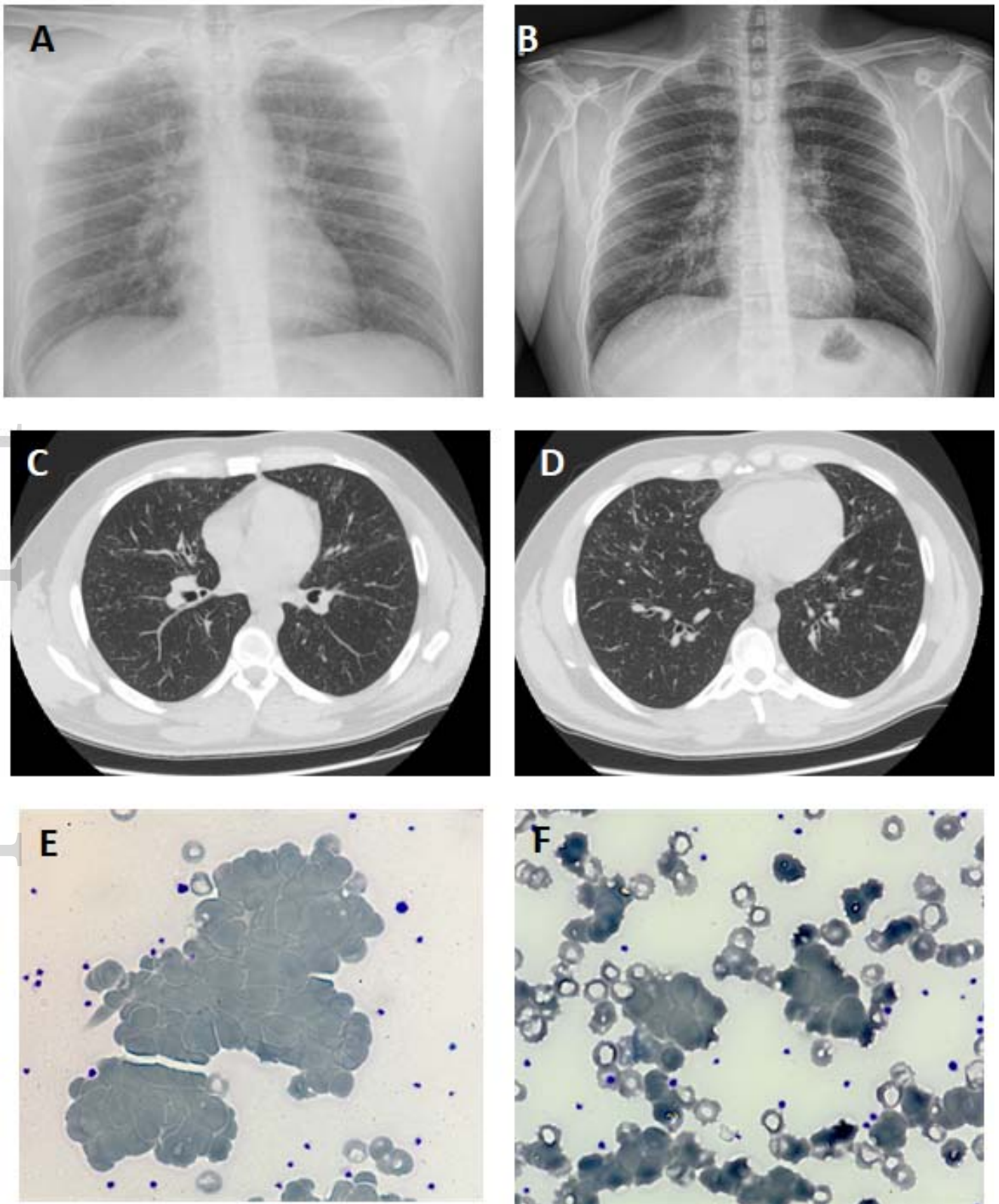


Figure 1. Chest X-ray of the patient. A: Small opacity in right upper lung and large dense opacity in left lung on day 4 after onset. B: Chest X Ray after therapy with clear lung field on day 27. C & D: TC scan show Bilateral opacities progressed with left lung consolidation on day 7. E & F: Blood smear show red cell agglutination. E) 4°C image of blood smear showed agglutination of RBC, as well as F) at 37 °C showed normal distribution of RBC.

Table 1. Laboratory parameters of patient.

	Lab parameters in prodromic phase of disease	Lab parameters during recovery				Lab parameters at the end of therapy
	1.31.2020	4.4.2020	4.9.2020	4.13.2020	4.15.2020	4.30.2020
WBC (x10 ³ /mmc)	5280	17700	4610	3580	3740	4980
Lymphocytes (cells/mmc)	1810	13700	2100	1680	1870	1630
Neutrophils (cells/mmc)	2700	2700	1820	1420	1310	2460
Monocytes (cells/mmc)	460	1190	400	270	300	350
Eosinophils (cells/mmc)	250	90	250	210	240	380
Basophils (cells/mmc)	60	20	40	0	10	60
RBC (x10 ³ /mmc)	5710000	2860000	2910000	1690000	3740000	5220000
Hemoglobin (g/dl)	16.1	10.4	9.62	11.5	12.2	15.6
Hematocrit (%)	48.8	23.9	25.5	14.5	35.1	46.9
MCV (fl)	85.4	83.7	87.6	85.9	90.8	89.9
Reticulocytes (%)	-		8.3%	12%	13%	
RDW (%)	11.6	15	16.8	16.2	16.6	14.1
PLT (x10 ³ /mmc)	224000	651000	272000	272000	224000	278000
LDH	-	464	-		173	