

## MOLECULAR EPIDEMIOLOGY

## HIV-1 and HCV sequences from Libyan outbreak

In 1998, outbreaks of human immunodeficiency virus type 1 (HIV-1) and hepatitis C virus (HCV) infection were reported in children attending Al-Fateh Hospital in Benghazi, Libya. Here we use molecular phylogenetic techniques to analyse new virus sequences from these outbreaks. We find that the HIV-1 and HCV strains were already circulating and prevalent in this hospital and its environs before the arrival in March 1998 of the foreign medical staff (five Bulgarian nurses and a Palestinian doctor) who stand accused of transmitting the HIV strain to the children.

Almost half of the 111 children studied in the early months after the discovery of the outbreak showed evidence of both HIV-1 and HCV infection<sup>1</sup>. Of 418 children eventually affected by these viruses, 248 were referred to European hospitals<sup>1,2</sup>. Sequence analysis of 51 children classified the HIV-1 infection as the strain CRF02\_AG; HCV infection was classified as genotype 4 or subtype 1a in 15 children<sup>1,2</sup>.

We studied HIV-1 *gag* gene sequences from 44 affected children, plus 61 HCV *E1E2* gene sequences that span the HCV hypervariable region (for methods, see supplementary information). By using these data in an evolutionary analysis, we could place a real timescale on the transmission history of the outbreaks.

We collated all available reference strains that were closely related to the sequences from the Al-Fateh Hospital, then estimated and assessed phylogenies using algorithmic, bayesian and maximum-likelihood methods

(for details, see supplementary information). The HIV-1 sequences from the hospital form a well supported monophyletic cluster within the CRF02\_AG clade, indicating that the outbreak arose from one CRF02\_AG lineage. The cluster is closest to three west African reference sequences (Fig. 1a), the basal location of which suggests that the Al-Fateh Hospital lineage arrived in Libya from there. The branch length leading to the Al-Fateh Hospital cluster is perfectly typical; hence the Al-Fateh Hospital strain is not unusually divergent<sup>2</sup>.

In an equivalent HCV phylogenetic analysis, the HCV sequences from the hospital formed three monophyletic clusters containing 11 subtype-4a sequences, phylogenetically placed among Egyptian subtype 4a lineages; 22 sequences most closely related to a Cameroonian genotype-4 strain; and 24 sequences belonging to the worldwide and prevalent subtype 1a; four remaining sequences belong to genotype 4 (Fig. 1b, c; see supplementary information).

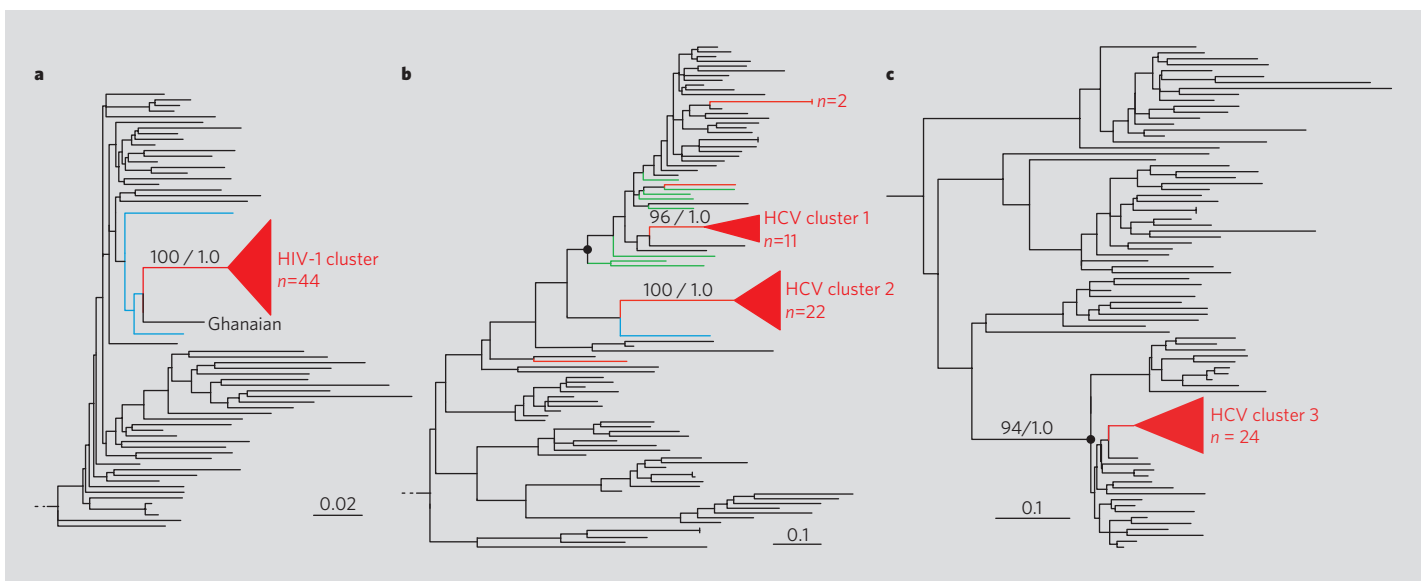
Epidemiological linkage of the HIV-1 and HCV clusters from Al-Fateh Hospital with sequences from sub-Saharan Africa is to be expected, given the large number of migrants within or passing through Libya<sup>3</sup>; indeed, the Libyan authorities have expressed concern about the risk of introduction of HIV/AIDS and hepatitis as a result of this migration<sup>4</sup>. In addition, HCV genotype 4 is endemic to central Africa and the Middle East<sup>5-7</sup>, and subtype 4a is exceptionally prevalent in neighbouring Egypt<sup>8,9</sup>.

Virus sequences also contain temporal information about the date of origin and age of epidemics<sup>10</sup>. We therefore comprehensively analysed the evolution of the Al-Fateh Hospital clusters using an established bayesian Markov chain Monte Carlo (MCMC) approach<sup>9,10</sup> that appropriately accounts for estimation uncertainty. We estimated three parameter values for each cluster: the date of its most recent common ancestor; the probability that its most recent common ancestor was more recent than 1 March 1998; and the percentage of its lineages that already existed before 1 March 1998. (These values are conservative, because cluster origins could be older than the most recent common ancestor, but not younger.) To avoid model selection bias, we used a range of applicable models.

We found that, irrespective of which model was used, the estimated date of the most common recent ancestor for each cluster predated March 1998, sometimes by many years (Fig. 2).

In most analyses, the probability that the clusters from the Al-Fateh Hospital originated after that time was almost zero (for details, see supplementary information). For the three HCV clusters, the percentage of lineages already present before March 1998 was about 70%; the equivalent percentage for the HIV-1 cluster was estimated at about 40%.

Our results support the existing nosocomial transmission scenario<sup>1,11</sup> and suggest that Al-Fateh Hospital had a long-standing infection-control problem. The earlier origin and



**Figure 1 | HIV-1 and HCV sequences from 1998 Al-Fateh Hospital (AFH) outbreak.** a–c, Estimated maximum-likelihood phylogenies for HIV-1 CRF02\_AG (a), HCV genotype 4 (b) and HCV genotype 1 (c). Source of sequences used for analysis: AFH, red; Egypt, green; Cameroon, blue. Black circles mark the common ancestor of HCV subtype 4a and 1a; numbers above AFH lineages give clade support values using bootstrap and bayesian methods, respectively. Scale bar units are nucleotide substitutions per site. For visual clarity, AFH clusters are represented by triangles and some non-informative reference strains are excluded.

greater number of HCV clusters than HIV-1 clusters reflect the higher transmissibility of HCV compared with HIV-1 by such routes<sup>12</sup>. Crucially, we have shown that the HIV-1 and HCV strains responsible were being spread and transmitted among individuals attending the hospital before March 1998, indicating that many of the transmissions giving rise to the infection clusters must have already occurred before the foreign medical staff arrived.

**Tulio de Oliveira\***, **Oliver G. Pybus\***, **Andrew Rambaut†**, **Marco Salemi‡**, **Sharon Cassol§**, **Massimo Ciccozzi||**, **Giovanni Rezza||**, **Guido Castelli Gattinara¶**, **Roberta D'Arrigo#**, **Massimo Amicosante\*\***, **Luc Perrin††**, **Vittorio Colizzi‡‡**, **Carlo Federico Perno§§**, **Benghazi Study Group|||**

\*Department of Zoology, University of Oxford, Oxford OX1 3PS, UK

e-mail: tulio.deoliveira@zoo.ox.ac.uk

†Institute of Evolutionary Biology, University of Edinburgh, Edinburgh EH9 3JT, UK

‡College of Medicine, University of Florida, Gainesville, Florida 32610, USA

§Faculty of Health Sciences, University of Pretoria, 0001, Pretoria, South Africa

||Department of Infectious Diseases, Istituto Superiore di Sanità, 00161 Rome, Italy

¶Department of Immunology and Infectious Diseases, Bambino Gesù Children's Hospital, 00165 Rome, Italy

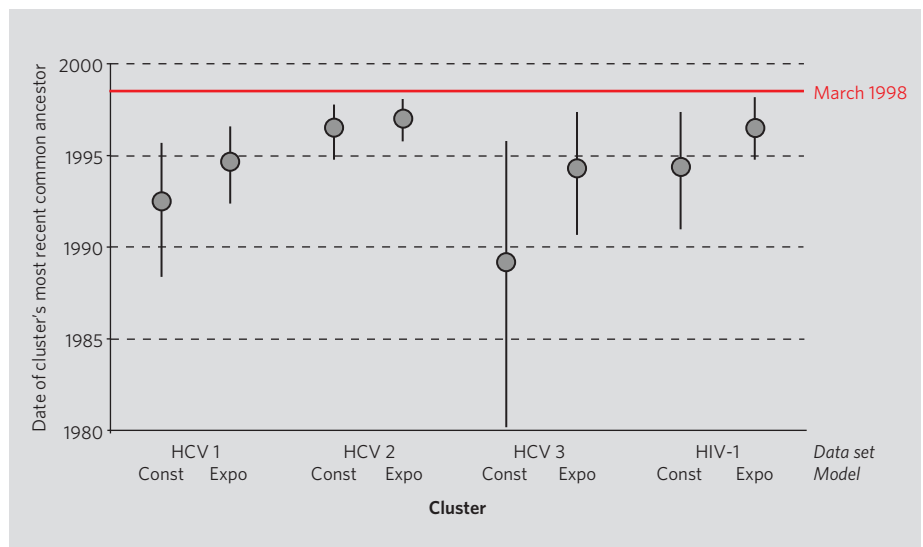
#Spallanzani Institute for Infectious Diseases, 00149 Rome, Italy

\*\*Department of Internal Medicine, University of Rome "Tor Vergata", 00133 Rome, Italy

††Geneva University Hospital, 1211, Geneva, Switzerland

‡‡Department of Biology, University of Rome "Tor Vergata", 00133 Rome, Italy

§§Department of Experimental Medicine and Biochemical Sciences, University of Rome "Tor



**Figure 2 | Estimated dates of the most recent common ancestor for each cluster.** Results obtained by using different evolutionary models. Vertical lines show the 95% highest posterior density intervals. Red line shows time of arrival of the foreign staff in March 1998. For further details, see supplementary information. 'Const', constant size; 'Expo', exponential growth.

Vergata", 00173 Rome, Italy

|||For full listing, see supplementary information.

1. Yerly, S. *et al. J. Infect. Dis.* **184**, 369–372 (2001).
2. Visco-Comandini, U. *et al. AIDS Res. Hum. Retrovir.* **18**, 727–732 (2002).
3. Human Rights Watch *Stemming the Flow* Vol. 18, No. 5 (2006); <http://www.hrw.org/reports/2006/libya0906>
4. European Commission *Technical Mission to Libya on Illegal Immigration*, 27 Nov–6 Dec 2004 (2006); <http://www.statewatch.org/news/2005/may/eu-report-libya-ill-imm.pdf>
5. Ndjomou, J., Pybus, O. G. & Matz, B. *J. Gen. Virol.* **84**, 2333–2341 (2003).
6. Smith, D. B. *et al. J. Gen. Virol.* **78**, 321–328 (1997).
7. Pybus, O. G. *et al. Science* **292**, 2323–2325 (2001).
8. Frank, C. *et al. Lancet* **355**, 887–891 (2000).
9. Pybus, O. G., Drummond, A. J., Nakano, T., Robertson, B. H.

& Rambaut, A. *Mol. Biol. Evol.* **20**, 381–387 (2003).

10. Drummond, A. J., Ho, S. Y., Phillips, M. J. & Rambaut, A. *PLoS Biol.* **4**, e88 (2006).

11. Montagnier, L. & Colizzi, V. *Report on the Benghazi Outbreak* (2006); <http://www.nature.com/nature/journal/v443/n7114/extref/montagnier.pdf>

12. Goldmann, D. A. *J. Allergy Clin. Immunol.* **110** (suppl.), 21–26 (2002).

**Supplementary information** accompanies this communication on Nature's website.

**Received 4 November; accepted 24 November 2006. Published online 6 December 2006.**

**Competing financial interests:** declared none  
doi:10.1038/nature444836a

**BRIEF COMMUNICATIONS ARISING** online  
▶ [www.nature.com/bca](http://www.nature.com/bca) see Nature contents.