



Painful swelling in the proximal third of the arm

Maria Pilar Aparisi Gómez^{1,2} · Francisco Aparisi² · Alberto Bazzocchi³

Published online: 25 June 2018
© ISS 2018

Question

56-year-old woman with painful swelling of the arm.

The diagnosis can be found at <https://doi.org/10.1007/s00256-018-2997-2>

✉ Maria Pilar Aparisi Gómez
pilucaparis@yahoo.es; pilara@adhb.govt.nz

¹ Department of Radiology, Auckland City Hospital - Greenlane Clinical Center Auckland District Health Board, 2 Park Road, Grafton, Auckland 1023, New Zealand

² Department of Radiology, Hospital Nueve de Octubre, Calle Valle de la Balletera, 59, 46015 Valencia, Spain

³ Diagnostic and Interventional Radiology, The “Rizzoli” Institute, Via G. C. Pupilli 1, 40136 Bologna, Italy

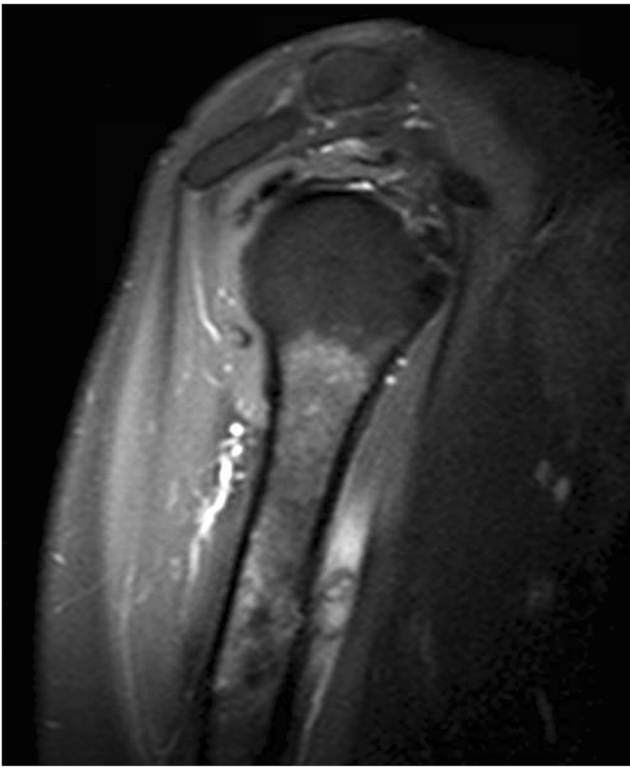


Fig. 1 Oblique sagittal PDW SPAIR



Fig. 3 Oblique sagittal T1W TSE

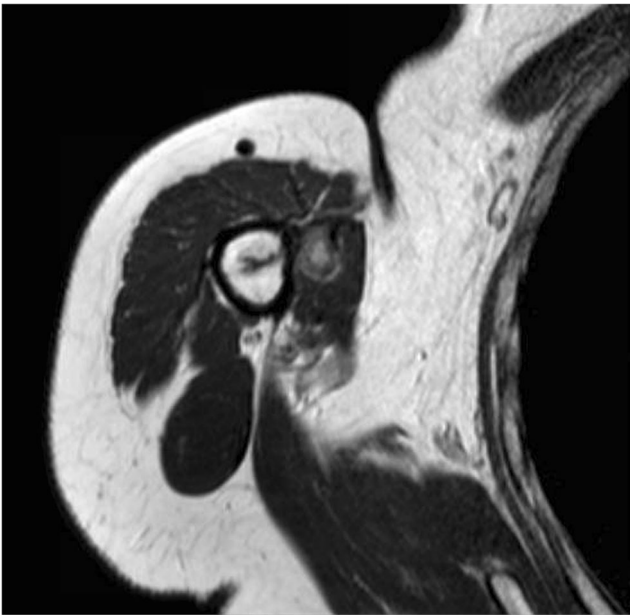


Fig. 2 Axial PDW aTSE



Fig. 4 Coronal T1W fat sat with Gadolinium

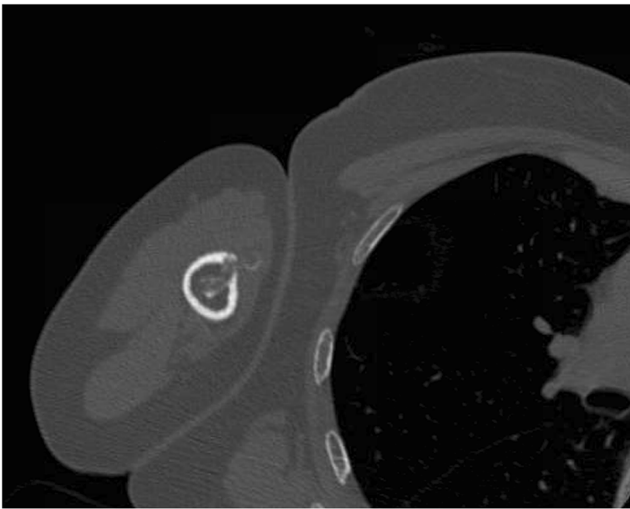


Fig. 5 CT axial acquisition

Compliance with ethical standards

Conflict of interest The authors declare that they have no conflict of interest.

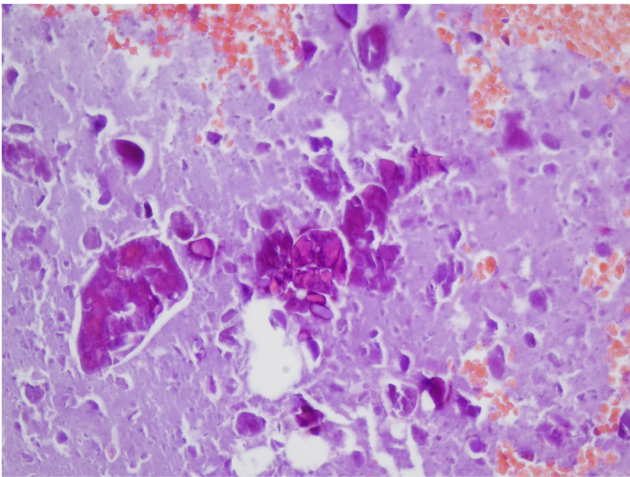


Fig. 6 Hematoxylin and eosin stain 400x