

ISSN 0257-8050

POLLUTION RESEARCH

EM INTERNATIONAL

VOL. 40 (1) : 2021

POLLUTION RESEARCH

VOL. 40 (1) : 2021

CONTENTS

- 1-7 Bio-sorbent and Activated Carbon Adsorption Comparative Study of *Jatropha Curcas* Leaves in Reducing of Free Fatty Acid (FFA) and Peroxide Value (PV) to Improving of Used Cooking Oil Quality
—*Hafni Indriati Nasution, Jasmidi, Marini Damanik, Siti Rahmah, Wasis Wuyung Wisnu Brata, Rendra Efendi and Moondra Zubir*
- 8-11 Challenges for Surabaya City as a Smart City
—*Lutfi Agus Salim*
- 12-20 Effect of Polluted Well Water by Bacteria *E. coli* to Urinary Tract Infections in Pregnant Women
—*Yohanes Agus Setianto, Hartono, Totok Gunawan and Evi Gravitiani*
- 21-26 Plant-microbe Interactions in Attenuation of Toxic Wastes in the Ecosystem
—*Ikponmwosa O. Egbuomwan, Ehi G. Stan-Labo and Oghenerobor B. Akpor*
- 27-33 Water Disinfection from Microorganisms using Chitosan
—*M.N. Saprykina, E.V. Bolgova, L.O. Melnyk and V.V. Goncharuk*
- 34-39 Monitoring of Mercury Content in Agroecosystems of the Central Chernozem Region of Russia
—*Pyotr A. Chekmarev, Sergej V. Lukin and Svetlana V. Selyukova*
- 40-46 Water Treatment Installation Based Chrome Content Analysis in Indonesian Leather Tanning Industry
—*Rosad Ma'ali El Hadi, Ika Arum Puspita, Wawan Tripiawan and Anton Abdulbasah Kamil*
- 47-52 Concentration and Activity of Cholinesterase in Cows Plasma as Affected by Organophosphate Pesticides
—*Ali Harokan, Totong Kamaluddin, Daniel Saputra and Nurhayati Damiri*
- 53-57 Calculation of Radioactivity Levels for Various Soil Samples of Neighborhood Al Rahmah (Iraq)
—*Shatha F. Alhous, Lubna A. Alasadi, Shaymaa Awad Kadhim, Hayder H. Hussain and Rusul Mohammed Alkhafaji*
- 58-62 Adsorption Ability Study of Yellow (W6GS) Dye from Aqueous Solution by Iraqi siliceous rocks
—*Ammar J. Mohammed and Juman A. Naser*
- 63-66 Environmental Impact Assessment for Promoting Cleaner Production: Qualitative Process Analysis in Cement Plants
—*Aulia Ulfah Farahdiba, Anis Zusrin Qonita, Zizka Layly Ramadhanti, Feni Eka Juliani, Aussie Amalia and Aditya Prana Iswara*
- 67-70 Ballast Water Management in the Waters Around Pt. Pelindo I Following the Regulation of Imo MEPC 56/23 Annex 2 Based on Environmental Risk Mitigation
—*Minto Basuki, Lukmandono, Maria Margareta Zau Beu and Moch. Junaidi Hidayat*
- 71-78 Effects of Meat Product Wastewater on Seed Germination of Rd 41 Rice (*Oryza Sativa* L.) for Reuse Purpose
—*R. Patsinghasanee, P. Dhanmanonda, S. Bualert, O. Phewnil and D. Ontwimol*
- 79-87 Assessment of Polycyclic Aromatic Hydrocarbons (PAHs) in Water and Sediments at South Part of Al-Hammer Marsh, Southern Iraq
—*Salah Mahdi Saleh, Fadhil J. Farhan, Abdalhussein A. Khwedem, Hamid T. Al-Saad, Abbas A. Hantoush and Abdul Zahra Al-Hello*
- 88-92 Sustainable Sanitation Assessment of Settlements Close to A Landfill: A Case Study of Piyungan Landfill, Yogyakarta, Indonesia
—*Aulia Ulfah Farahdiba, Wiwien Adefitri, Andik Yulianto, Agil Harnowo Putra, Anis Zusrin Qonita and Nur Indradewi Oktavitri*

- 93–96 Photodegradation of Dye Reactive Blue160 (RB160) in Presence of Strontium Chromate
—*Monika Dadheech and B. V. Kabra*
- 97–103 Quality Assessment of Groundwater in the Western Parts of Chhattisgarh (Rajnandgaon District), India
—*Nupur Prithviraj, Jagadish Kumar Tripathy, Smruti R Panda and Kamal Kumar Barik*
- 104–110 Physical, Biological and Chemical Quality of Compost Using Banana Excrecence Bioactivator
—*Indasah and Nurina Fitriani*
- 111–116 Removal of Nutrients from Domestic Wastewater in A Hybrid Subsurface Flow Constructed Wetland
—*Karuna N. Pohekar and Neetu Rani*
- 117–120 Detailed Mapping for the Conservation of Karst Area in the Limestone Prospect Area in Bojongmanik, Lebak Regency, West Java Province, Indonesia
—*Zainal Abidin, Samsudin Affandi, Maritha Nilam Kusuma and Nurina Fitriani*
- 121–128 Essentiality, Toxicity and the Mechanism of Toxicity of Nickel in Plant
—*Raj Narayan Roy*
- 129–135 Estimating Chlorophyll-a, Concentration Using Sentinel-2 Imagery in Selected Lakes of Kanyakumari District, Tamil Nadu, India
—*C. Rojamadhuvanthi, N. R. Chrips and P. B. Harathi*
- 136–139 Water Resource Management Planning Based on Technological Aspects for Small and Outer Islands in Indonesia (A Case Study: Selaru Island)
—*Ony Frengky Rumihin, Angel Rumihin, Nurina Fitriani, Wati Asriningsih Pranoto and Chaidir Anwar Makarim*
- 140–147 Employees Attitude Towards Environmental Management Practices in Hotels: A Study of Rajasthan Hospitality Industry
—*Shweta Sharma and Monika Prakash*
- 148–152 Assessment of Heavy Metal and Pesticide Contamination in Paddy Fields and Development of Phytoremediation System in Kozhikode District, Kerala, India
—*Rahna K. P., Arathi T., Delse P. Sebastian and Satheesh George*
- 153–162 Bacteriophage: An Eco-friendly and Cost-effective Green Technology in Reuse of Treated Wastewater for Agriculture
—*Patwardhan Rajashree B., Machchha Pooja K., Sonawane Madhuri P. and Gore Suneeti S.*
- 163–167 Removal of Fluoride from Ground Water of Hisar City, using Brick Powder (An Industrial Waste) and Wheat Husk (An Agricultural Waste) as Adsorbents: A Comparative Study
—*Sunil Kumar and Sanjay K. Sharma*
- 168–177 Adsorption of Naphthalene from Aqueous Solutions by De-oiled Rice Bran Charcoal as A Low Cost Adsorbent
—*Bohar Singh, Tandeep Singh, Jobandeep Singh, Rajiv Arora and B.S. Walia*
- 178–181 Scenarios Modification of Hydraulic Conductivity to Time Period of Clogging in Infiltration Gallery
—*Maritha Nilam Kusuma, Budisantoso Wirjodirjo, Wahyono Hadi and Nurina Fitriani*
- 182–188 A Green Technology for the Removal of Pendimethalin from Aqueous System Using Adsorption Technique
—*Praneesh M., Babu V. and Anu Gopinath*
- 189–193 Seasonal Variation of Drinking Water Sources and Contour Maps – in the Upland Area of the West Godavari District, AP, India
—*C.A. Jyothirmayee, Sr Showrilu, K. Sreelatha and A. Nirmala Jyothsna*
- 194–198 Microalgae *Scenedesmus* sp Potential in Phytoremediation of Kalidami Retention Pond with Potassium and Carbon Addition
—*Indah Nurhayati, Rhenny Ratnawati, Joko Sutrisno, Yanatra Budi Pramana and Nur Indradewi Oktavitri*

- 199–202 Plastic Degrading Ability of Laccase Enzyme Isolated from Garbage Dumping Sites of Chennai
—*Abirami G., Srimathi M., Suganthi M., Ramprasath C. and Manjunathan J.*
- 203–210 Quantification of DEHP by UHPLC in Soil of Municipal Wards of Patna, Bihar
—*Aseem Kumar Anshu and Preety Sinha*
- 211–216 Assessment of Arsenic and Fluoride Content in Different Drinking Water Sources of Secondary Schools in Greater Guwahati of Assam, India
—*Md Yamin Hassan, Mridul Buragohain, Moyetree Sarmah Bezboruah and Indibor Buragohain*
- 217–222 Sub-surface and Surface Water Quality of Davangere District, Karnataka: A Review
—*S. Thirumala, B. M. Manohara and B.R. Kiran*
- 223–226 The Effect of L-arginine to the Number of Sertoli Cells and Leydig Cells of Mice (*Mus musculus*) After Exposure to High Temperature
—*K. K. Bariyah, E. B. Aksono, L. R. Yustinasari, S. Susilowati and Widjiati Arimbi*
- 227–235 Nickel Essentiality, Toxicity and the Mechanism of Toxicity in Animal
—*Raj Narayan Roy*
- 236–242 GIS Based Analysis of Distribution of Heavy Metal Pollutants in India: Sources, Toxicity and their Mitigation
—*Vineet Kumar Rai, Pravin Kumar, Ashutosh Singh, Dipak Prasad and Praveen Kumar Rai*
- 243–247 Air and Surface Bacteriology in Selected Wards of Tertiary Care Charitable Hospital
—*Sharad Chand, C.S. Shastry, Shivakumar Hiremath, Juno J. Joel, C.H. Krishna Bhat and Uday Venkat Mateti*
- 248–254 Assessment of Water Quality of Basantar River in Samba District, India
—*Ekjot Kour, Manisha Kumari and Sarita Nagari*
- 255–258 The Effect of Guava Fruit (*Psidium guajava* L.) Extract to the Amount of Leydig Cells of Male Rats (*Rattus norvegicus*) Exposed to Cigarette Smoke
—*L.U.N. Ilmi, D.K. Meles and Wurlina*
- 259–264 Solid Waste Management by Algae: Current Applications and Future Perspectives
—*Gour Gopal Satpati*
- 265–272 Implications of the Solid Waste Management Practices on the Socio-economic Status and Quality of Life of People: A Case Study from Kollam Urban Area, Kerala
—*Udayakumar J., Mufeed V.T., Pranav P.S., Sethu C. Joseph, Sooraj A.R. and Viswajith S.*
- 273–280 Emission Reduction of Methanol Gasoline Blended Fuels in Lean Burn SI Engine Using zeolite-Based Catalytic Converter
—*Elavarasan G. and Karthikeyan Duraisamy*
- 281–289 Historical Precipitation and Variability Analysis in Cauvery River Basin
—*Kumaraswamy, T.R. and B.C. Nagaraja*
- 290–295 Identification of *Salmonella* sp. from Animal Products in Situbondo, Indonesia
—*F. Fanissa, D. Handijatno, N. D. R. Lastuti, M. H. Effendi, D. Rahardjo and Soharsono*
- 296–302 Review of Advanced Techniques to Check Possible Pollutants and for Aquatic Quality Management of Urban Lakes
—*Yuoraj Singh and Manish Kumar Jain*
- 303–307 Table Salt and Coarse Salt: A Source of Contamination by Microplastic
—*D.C.C. Lelis, R.L.D. Cunha and L. De Brito-Gitirana*
- 308–316 Kinetics and Equilibrium Adsorption Studies of Removal of Anionic Dyes from Water Using Calcined Layered Double Hydroxides
—*P. B. Sibanda, S. Majoni, L. L. Sibali and H. Chiriritwa*

- 317–321 Antimicrobial Resistance Profile of *Escherichia coli* Bacteria Collected from Cloaca Swab of Broiler Chicken at Surabaya Traditional Market, Indonesia
—*W. Tyasningsih, Y. A. Yurianti, J. Rahmahani, B. Setiawan, W. Tyasningsih, N. Harijani, Budiarto, M. H. Effendi, Salamah and A.M. Witaningrum*
- 322–325 Relative Weight and Length of Intestine and Body Weight Gain Influenced by Low Dosage Aflatoxin Contaminated in the Feeding Chicken Feed During Grower Period
—*Dio Putra Pratama, Benjamin Christoffel Tehupuring, Hana Eliyani, Soeharsono, Emmanuel Djoko Poetranto, Wiwiek Tyasningsih and Gracia Angelina Hendarti*
- 326–329 Green Tea Leaves Extract Effect on Histopathology of Mercury Chloride Induced Rat's Liver
—*Renada Gema Himawan, Hardany Primarizky, Maslichah Mafruchati, Nusdianto Triakoso, Widjiati, Lilik Maslachah and Arimbi*
- 330–334 The Effect of Fig Leaves (*Ficus carica*) Ethanol Extract on Total of Spermatogenic and Leydig Cells of Male Mice (*Mes musculus*) Exposed with Lead Acetate
—*Fristi Sintya Herawati, Sri Agus Sudjarwo, Tjuk Imam Restiadi, Widjiati, Lita Rakhma Yustinasari and Erma Safitri*
- 335–340 Effect of Guava Fruit (*Psidium guajava* L.) Extract to the Motility and Viability Spermatozoa of Rats (*Rattus Novergicus*) Exposed to Cigarette Smoke
—*Early Juvitta Anggraini, Wurlina and Jola Rahmahani*
- 341–344 Palmyra Leaf Processing for Gedhog Batik Packaging Based on Reduce, Reuse and Recycle Principles
—*Moch. Jumaidi Hidayat, Bramantijo, Mufi Mubaroah and Nurina Fitriani*
- 345–349 Environmental Pollution by Brick Kiln in Bangladesh: An Analysis of the Existing Legal Framework
—*Md. Abu Bakar Siddik, Kudrat-e-khuda (Babu), Md. Abdul Hannan and Moriom Akter Mou*
- 350–353 The Study of Utilization of the Experiential Nature Environment Exploration in promoting the Environmental Awareness into Primary School Curriculum at Padang City, Indonesia
—*Aulia Azhar, Eri Barlian, Nurhasan Syah and Daimon Syukri*
- 354–358 Estimation of Some Plant Nutritive and Heavy Metals in Euphrates River at the Cities of Ramadi and Khalidiah
—*Shaimaa Fatih Ali and Bashar Tareq AL-Shandah*

ANTIMICROBIAL RESISTANCE PROFILE OF *ESCHERICHIA COLI* BACTERIA COLLECTED FROM CLOACA SWAB OF BROILER CHICKEN AT SURABAYA TRADITIONAL MARKET, INDONESIA

W. TYASNINGSIH, Y. A. YURIANTI, J. RAHMAHANI, B. SETIAWAN, W. TYASNINGSIH, N. HARIJANI, BUDIARTO, M. H. EFFENDI*, SALAMAH AND A.M. WITANINGRUM

Faculty of Veterinary Medicine, Universitas Airlangga, Surabaya, Indonesia

(Received 29 May, 2020; Accepted 23 July, 2020)

ABSTRACT

The aim of this research is to identify antimicrobial resistance's profile of *Escherichia coli* from cloaca swab of broiler chicken at the Surabaya traditional market for antibiotics: aztreonam, gentamicin, chloramphenicol, tetracycline, and ciprofloxacin. This research is using 60 broilers chicken sample, with cloaca swab method. The samples are isolated and identified with several procedures, Mac Conkey Agar (MCA), Eosin Methylene Blue Agar (EMBA), Gram staining, indole test, Methyl Red-Voges Proskauer (MR-VP), citrate and Triple Sugar Iron Agar (TSIA). The aim of isolation and identification is finding 60 positive isolate of *Escherichia coli*. Antibiotic sensitivity test using Kirby-Bauer (Disc Diffusion Method) based on Clinical and Laboratory Standard Institute 2018. *Escherichia coli* sensitivity test proved that resistant bacteria for antibiotic ciprofloxacin is 67%, tetracycline is 65%, gentamicin is 37%, chloramphenicol is 23%, and aztreonam is 3%.

KEY WORDS : Antimicrobial, Resistance, *Escherichia Coli*

INTRODUCTION

Antimicrobial Resistance (AMR) is a threat to health in Indonesia. Resistance has an impact on morbidity and mortality, as well as a negative impact on the health, economic, and future generations. Resistance initially occurs at the hospital level and then develops in the community. AMR in humans can be transmitted through food sources from animals consumed by the community cannot be separated from the presence of microorganism contamination, which has the opportunity to transmit the nature of resistance. One of the microorganisms that become contaminated in food sources of animal origin is the bacterium *Escherichia coli* (Erfianto, 2014; Rahmahani *et al.*, 2020).

Resistance levels of *E. coli* isolated from broiler chicken meat from the traditional Bogor market, there is a resistance level of 80.6% against tetracycline, 14.2% against gentamicin, and 11.4% against chloramphenicol. From these data it was

concluded that the level of resistance *E. coli* against some antibiotics is quite high due to excessive use of antibiotics (Suandy, 2011)

The WHO statement on the selection of appropriate antibiotics based on bacterial resistance patterns is important for the assessment of bacterial resistance factors and controlling the incidence of bacterial resistance in animal to human food. So there needs to be supervision related to the emergence of patterns of resistance to these antibiotics (WHO, 2019). The study was conducted to obtain a study of the resistance profile of *E. coli* bacteria in broiler chickens related to bio safety where *E. coli* bacteria with resistant nature have the opportunity to transmit the nature of resistance to humans through the food chain pathway.

The purpose of this study was to determine the antibiotic resistance profile of *E. coli* bacteria resulting from the isolation of broiler chicken cloaca from the Surabaya traditional market against aztreonam, gentamicin, chloramphenicol,

tetracycline and ciprofloxacin antibiotics. This research is expected to provide information to the public, especially for related institutions regarding the antibiotic resistance profile of *E. coli* bacteria resulting from the isolation of broiler chicken cloaca from the Surabaya traditional market to the antibiotics tested.

MATERIALS AND METHODS

The research materials are broiler cloaca swab samples, Buffered Peptone Water (BPW), Mac Conkey Agar (MCA), Eosin Methylene Blue Agar (EMBA), Sulfide Indol Motility (SIM), Methyl Red Voges Proskauer (MR-VP), Simons Citrate Agar (SCA), Triple Sugar Iron Agar (TSIA), Standard McFarland number 0.5, Mueller Hinton Agar (MHA), Nutrient Agar (NA), physiological NaCl, 70% alcohol, antibiotic disks, Gram staining (violet crystals, lugol, acetone alcohol, and safranin). Research tools include vacutainer tubes, S size sterile cotton swabs, test tubes, disposable petri dishes, ose, needles, microscopes, glass objects, cool boxes, and calipers. The research samples were 60 broilers cloaca swabs taken from three Surabaya traditional markets (Pucang Market, Keputran Market and Wonokromo Market).

Sixty samples taken by the cloaca swab method were then put into a vacutainer tube containing Buffered Peptone Water (BPW) and put in a cool box. Samples were taken to the Bacteriology and Mycology Laboratory of the Veterinary Microbiology Department of the Faculty of Veterinary Medicine, Universitas Airlangga for further research. Samples were cultured on Mac Conkey Agar (MCA) media for 24 hours at 37 °C. *Escherichia coli* bacterial colonies on MCA media grew with characteristic red, convex, and clear boundaries (Dewanti and Wahyudi, 2011; Effendi *et al.*, 2018).

Colonies suspected of being *E. coli* bacteria were Gram stained with the result that all samples had morphology in the form of a short stem (coccobasil) and red in color. *E. coli* bacteria cannot maintain violet crystalline dyes during the Gram staining process due to the structure of Gram negative bacterial cell walls consisting of lipoproteins and thin peptidoglycan (Fitrialdi, 2011)

Colonies that were suspected as *E. coli* bacteria on MCA media and showed Gram negative results with morphology of the short stem were then cultured on Eosin Methylene Blue Agar (EMBA)

media. *E. coli* bacteria in EMBA media have the characteristics of the growth of metallic green colonies and convex colony surfaces with flat edges. Metallic green discoloration in EMBA caused by *E. coli* bacteria can ferment glucose, lactose, maltose, and mannitol (Matuwo, 2012; Effendi *et al.*, 2019). Colonies suspected of being *Escherichia coli* bacteria on the EMBA medium were again stained with Gram to confirm the morphology and nature of the bacteria. Separate colonies that have been tested for Gram staining are followed by biochemical IMViC tests (Indol, MR-VP, citrate) and TSIA (Sridhar, 2006; Wibisono *et al.*, 2020).

E. coli bacteria showed positive indole results and there was motility on the SIM media. In the Methyl-Red (MR) test, *E. coli* bacteria showed positive results and Voges-Proskauer (VP) with negative results. In the citrate test, *E. coli* bacteria showed negative results. TSIA test results showed Acid / Acid results, negative H₂S, and positive gas.

The *E. coli* bacterial isolate was made in the form of a suspension that was synchronized with McFarland 0.5 standard which was then subjected to antibiotic sensitivity testing using the Kirby-Bauer diffusion method against aztreonam antibiotics, gentamicin, chloramphenicol, tetracycline, and ciprofloxacin on Mueller Hinton Agar (MHA) media. MHA media were incubated for 16-18 hours at 37 °C. Inhibition zone diameters were measured using a calipers measuring instrument with an accuracy of 0.02 millimeter (mm) and adjusted to the 2018 Clinical and Laboratory Standards Institute (CLSI)(CLSI, 2018; Putra *et al.*, 2020).

RESULTS AND DISCUSSION

The results of 60 positive samples of *Escherichia coli* bacteria were marked on MCA media. The results were obtained from all samples with a growth of red and convex colonies, Gram staining results obtained were Gram negative and colony-shaped short stems (coccobasil), on EMBA media the colonies were metallic green and spherical in shape and biochemical tests on SIM media with positive indole and motility. The MR test showed positive results, negative VP, the citrate test showed negative results, and the TSIA test showed Acid / Acid results, negative H₂S, positive gas. The results of isolation and identification can be seen in Figure 1 and 2.

Sixty *Escherichia coli* bacterial isolates were followed by sensitivity testing to the antibiotics aztreonam, gentamicin, chloramphenicol,

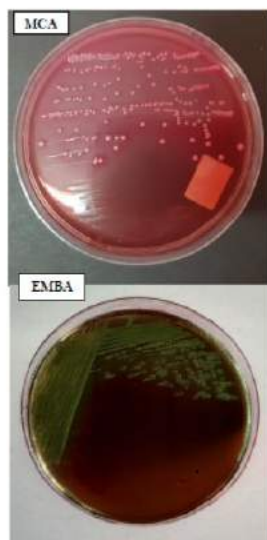


Fig. 1. Isolation results and identification of *Escherichia coli* bacteria on MacConkey Agar (MCA) and Eosin Methylene Blue Agar (EMBA) media

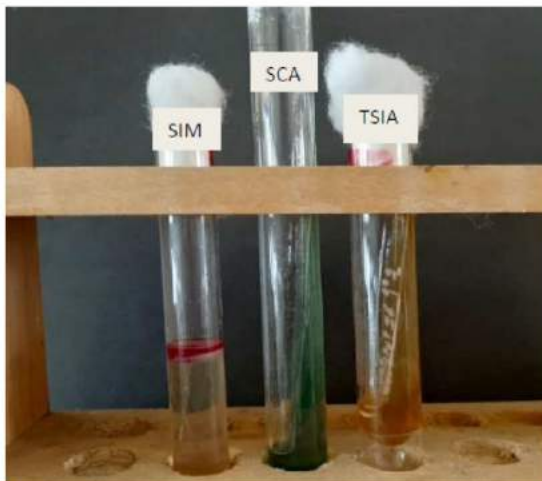


Fig. 2. The results of the identification of *Escherichia coli* bacteria on Sulfide Indol Motility (SIM), Simons Citrate Agar (SCA), and Triple Sugar Iron Agar (TSIA) media

tetracycline and ciprofloxacin. The sensitivity test showed that 40 samples (67%) were resistant to ciprofloxacin antibiotics, 39 samples (65%) were resistant to tetracycline antibiotics, 22 samples (37%) were resistant to gentamicin antibiotics, 14 samples (23%) were resistant to chloramphenicol antibiotics, and 2 samples (3%) were resistant to aztreonam antibiotics.

The results of the sensitivity test of *E. coli* bacteria to ciprofloxacin are classified as the highest resistance with a percentage of 67%. Ciprofloxacin antibiotics include fluoroquinolone antibiotics that work to influence DNA gyrase acid in bacteria, thus

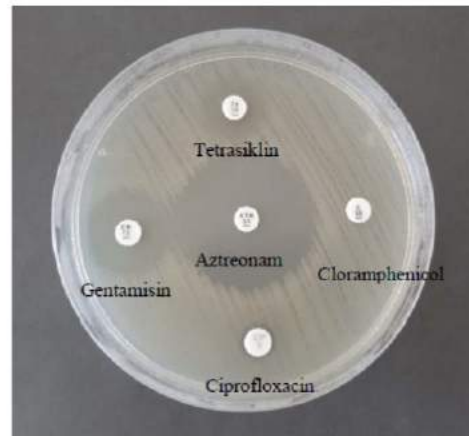


Fig. 3. Test results for the sensitivity of *Escherichia coli* bacteria to the antibiotics aztreonam, gentamicin, chloramphenicol, tetracycline, and ciprofloxacin.

inhibiting DNA synthesis. The resistance of *E. coli* bacteria to ciprofloxacin causes that ciprofloxacin cannot inhibit the existing DNA gyrase enzymes. Ciprofloxacin resistance is a result of the *gyrA* subunit mutation from gyrase which reduces the ability of antibiotics to bind to bacteria (Reygaert, 2013).

Sensitivity of *E. coli* bacteria to tetracycline showed the greatest 65% resistance after ciprofloxacin. Tetracycline antibiotics inhibit bacteria by inhibiting the process of ribosome 30S from prokaryotics by binding to aminoacyl-tRNA. The mechanism of resistance to tetracycline can occur because of changes in the permeability of bacterial cell envelopes. Bacterial cells that have resistance to tetracycline antibiotics cannot be actively transported into cells, so that the minimum inhibitory concentration cannot be maintained (Sudigdoadi, 2008).

Bacterial sensitivity test showed 37% of *E. coli* samples were resistant to gentamicin antibiotics. Gentamicin is an aminoglycoside class of antibiotics that has two or more amino groups that are bound to the benzene group and are bacteriocid (Juniastuti *et al.*, 2015). The mechanism of bacterial resistance to gentamicin occurs through inactivation of antibiotics by aminoglycosides modifying enzymes, namely the attachment of aminoglycosides to specific protein receptors of the 30S subunit on bacterial ribosomes, and subsequently aminoglycosides will inhibit the complex activity of the initiation of peptide formation (Dwidjoseputro, 2005).

The sensitivity test of *E. coli* bacteria to the chloramphenicol antibiotic showed a resistance of

23%. Chloramphenicol is an antibiotic that works to inhibit strong protein synthesis in bacteria. Blocking the attachment of amino acids to the newly emerging peptide chain of the 50S unit in the ribosome, by interfering with the action of peptidyl transferase. Chloramphenicol resistance is caused by *E. coli* bacteria producing the enzyme chloramphenicol acetyltransferase which can damage drug activity (Jawetz *et al.*, 2001)

Bacterial sensitivity test to aztreonam antibiotics showed a resistance of 3%. Aztreonam works by inhibiting bacterial cell wall synthesis to overcome severe infections by aerobic Gram-negative bacteria. The aztreonam antibiotic spectrum is similar to aminoglycosides, making it a special alternative to Gram-negative bacterial infections (Stringer, 2006). The mechanism of resistance to aztreonam occurs through the inactivation of antibiotics by the beta-lactamase enzyme which causes the bacterial cell wall to become resistant to antibiotics and reduced membrane permeability to antibiotics (Paterson and Bonomo, 2005; Wibisono *et al.*, 2020)

Antibiotic resistance occurs both intrinsically and in an acquired manner. Intrinsic resistance occurs chromosomally and takes place through cell multiplication which will be inherited in subsequent strains. Resistance can occur due to chromosomal mutations or due to DNA transfer through the process of transduction, transformation, and conjugation which is responsible for the emergence of resistance (Sudigdoadi, 2008; Putra *et al.*, 2019).

Genetic factors that underlie resistance can be caused by the mechanism by which enzymes are produced that can decipher antibiotics, changes in membrane permeability, increased endogenous substances that work antagonist to drugs, and changes in the number of drug receptors on bacterial cells or the nature of the component that binds the drug to its target (Sudigdoadi, 2008; Kristianingtyas *et al.*, 2020).

The results of the resistance profile of *E. coli* bacteria to antibiotics found that high isolates were resistant such as ciprofloxacin and tetracycline. *E. coli* bacteria resistant to antibiotics can transfer genetic factors to humans through the food chain or direct contact. The use of antibiotics in animals contributes to the occurrence of foodborne bacterial resistance in humans and animals.

CONCLUSION

The conclusions from the results of the study of

antibiotic resistance profile against *E. coli* bacteria isolated from broiler chickens swabs from the Surabaya traditional market found 100% positive samples of *E. coli* are resistant to ciprofloxacin antibiotics (67%), tetracycline (65%), gentamicin (37% %), chloramphenicol (23%), and aztreonam (3%).

ACKNOWLEDGEMENT

This research is expected to provide information to the public. Required for institutions related to the antibiotic resistance profile of *E. coli* bacteria and thank you for your guidance and support until the expected completion of this research.

REFERENCES

- Clinical and Laboratory Standards Institute (CLSI). 2018. Performance Standards for Antimicrobial Susceptibility Testing. 28th ed. Wayne, PA: CLSI.
- Dewanti, S. and Wahyudi, M.T. 2011. Antibacteri activity of bay leaf infuse (*Folia Syzygium polyanthum* Wight) to *Escherichia coli in-vitro*. *J. Med. Planta*. 1 (4) : 78-81.
- Dwidjoseputro, D. 2005. *Fundamentals of Microbiology*. Djambat, Jakarta. [Text in Indonesia].
- Effendi, M. H., Bintari, I. G., Aksoro, E. B. and Hermawan, I. P. 2018. Detection of blaTEM Gene of *Klebsiella pneumoniae* Isolated from swab of food-producing animals in East Java. *Trop. Anim. Sci. J.* 41(3):174-178.
- Effendi, M.H., Harijani, N., Budiarto, Triningtya, N.P., Tyasningsih, W. and Plumeriastuti, H. 2019. Prevalence of Pathogenic *Escherichia Coli* Isolated from Subclinical Mastitis in East Java Province, Indonesia. *Indian Vet. J.* 96 (03): 22-25.
- Effendi, M.H., Harijani, N., Yanestria, S.M., Hastutiek, P. 2018. Identification of shiga toxin-producing *Escherichia coli* in raw milk samples from dairy cows in Surabaya, Indonesia. *Philippine J Vet Med.* 55(SI) : 109-114.
- Erfianto, G.I. 2014. *Escherichia coli* Resistance to Antibiotics Isolated from Beef Cattle Imported through Jakarta's Tanjung Priok Port [Thesis]. Faculty of Veterinary Medicine. Bogor Agricultural Institute. [Text in Indonesia].
- Fitrinaldi, 2011. Microbial Fuel Cell as Alternative Energy Using *Escherichia coli* Bacteria. Postgraduate Chemistry Study Program. Andalas University. Padang. [Text in Indonesia].
- Juniastuti, T., Dewa, K.M., Sri, U.S., Iwan, S.H. and Rochma, K. 2015. *Textbooks on Pharmacotherapy and Toxicology*. Duta Persada Press: Surabaya. 10-22. [Text in Indonesia].

- Jawetz, Z.E., M.E.A.A. Joseph and Delberg. 2001. *Medical Microbiology*. Translation by Eddy Mudihardi, et al. Microbiology Section, Faculty of Medicine, Airlangga University. Jakarta: Salemba Medika. [Text in Indonesia].
- Kristianingtyas, L., Effendi, M.H., Tyasningsih, W. and Kurniawan, F. 2020. Genetic Identification of bla_{CTX-M} Gene and bla_{TEM} Gene on Extended Spectrum Beta Lactamase (ESBL) Producing *Escherichia Coli* from Dogs. *Indian Vet. J.* 97 (01): 17 - 21.
- Leboffe, M.J. and Pierce, B.E. 2011. *A Photographic Atlas for the Microbiology Laboratory* 4th Edition. Morton Publishing. Colorado. 110-113.
- Matuwu, A. 2012. Microbiological Quality of Chicken Meat in Modern and Traditional Markets in Makassar [Thesis]. Faculty of Animal Husbandry. Makassar Hasanuddin University. [Text in Indonesia].
- Paterson, D.L. and Bonomo, R.A. 2005. Extended-spectrum β -lactamases: a clinical update. *Clinical Microbiology Reviews.* 18(4): 657-686. [Text in Indonesia].
- Permatasari, D.A., Witaningrum, A.M., Wibisono, F.J., Effendi, M.H. 2020. Detection and prevalence of multidrug-resistant *Klebsiella pneumoniae* strains isolated from poultry farms in Blitar, Indonesia. *Biodiversitas.* 21 (10): 4642-4647.
- Pratiwi, P. B., Hidanah, S., Effendi, M. H., Estoe pangestie, A. T. S., Rahardjo, D. and Tyasningsih, W. 2020. Antibiotic Resistance Profile of *Escherichia coli* Isolated from Beef Sold at Several Wet Market In Sidoarjo, Indonesia. *Poll Res.* 39 (4) : 1262-1265
- Putra, A.R. Effendi, M.H. Koesdarto, S. Suwarno, S. Tyasningsih, W. and Estoe pangestie, A.T. 2020. Detection of the extended spectrum β -lactamase produced by *Escherichia coli* from dairy cows by using the Vitek-2 method in Tulungagung regency, Indonesia. *Iraqi Journal of Veterinary Sciences.* 34 (1): 203-207.
- Putra, A.R.S., Effendi, M.H., Koesdarto, S. and Tyasningsih, W. 2019. Molecular Identification of Extended Spectrum Beta-Lactamase (ESBL) Producing *Escherichia coli* Isolated from Dairy Cows in East Java Province, Indonesia. *Indian Vet. J.* 96 (10): 26 - 30.
- Rahmahani, J., Salamah, Mufasirin, Tyasningsih, W. and Effendi, M.H. 2020. Antimicrobial Resistance Profile of *Escherichia coli* from Cloacal Swab of Domestic Chicken in Surabaya Traditional Market. *Biochem. Cell. Arch.* 20 (1): 2993-2997.
- Reygaert, W.C. 2013. Antimicrobial Resistance Mechanisms of *Staphylococcus aureus*. Microbial Pathogens and Strategies for Combating them: Science, Technology, and Education. 297-305.
- Riwu, K.H.P., Effendi, M.H. and Rantam, F.A. 2020. A review of extended-spectrum β -Lactamase (ESBL) producing *Klebsiella pneumoniae* and Multidrug-Resistant (MDR) on companion animals. *Sys Rev Pharm.* 11 (7): 270-277.
- Suandy, I. 2011. Antimicrobial resistance in *Escherichia coli* isolated from commercial broiler farms in Bogor District, West Java [tesis]. Chiang Mai (TH): Chiang Mai University.
- Sridhar, R.P.N. 2006. IMViC Reaction. JJMMC. <https://www.microrao.com/micronotes/imvic.pdf> [20 Juli 2019].
- Sudigdoadi, Sunarjati, 2008. Antibiotic Resistance Mechanisms in Bacterial Infection. Faculty of Medicine, Padjadjaran University. 8-13. [Text in Indonesia].
- Stringer, J.L. 2006. *Basic Concepts of Pharmacology Guide for Students*. Huriawati, editor. Jakarta (ID): EGC.
- Wibisono, F.J., Sumiarto, B., Untari, T., Effendi, M.H., Permatasari, D.A. and Witaningrum, A.M. 2020. The Presence of Extended Spectrum Beta-Lactamase (ESBL) Producing *Escherichia coli* on Layer Chicken Farms in Blitar Area, Indonesia. *Biodiversitas.* 21 (6) : 2667-2671.
- Wibisono, F.J., Sumiarto, B., Untari, T., Effendi, M.H., Permatasari, D.A. and Witaningrum, A.M. 2020. CTX Gene of Extended Spectrum Beta-Lactamase (ESBL) Producing *Escherichia coli* on Broilers in Blitar, Indonesia. *Sys Rev Pharm.* 11 (7) : 396-403.
- Wibisono, F.J., Sumiarto, B., Untari, T., Effendi, M.H., Permatasari, D.A. and Witaningrum, A.M. 2020. Short Communication: Pattern of antibiotic resistance on extended-spectrum beta-lactamases genes producing *Escherichia coli* on laying hens in Blitar, Indonesia. *Biodiversitas.* 21 (10): 4631- 4635.
- Widodo, A., Effendi, M.H., Khairullah, A.R. 2020. Extended-spectrum beta-lactamase (ESBL)-producing *Escherichia coli* from livestock. *Sys Rev Pharm.* 11 (7): 382-392.
- World Health Organization (WHO). 2019. Let's Together Overcome Antimicrobial Resistance (AMR). // <http://www.depkes.go.id>. [July 20, 2019]. [Text in Indonesia].
- Yanestria, S.M., Rahmaniar, R.P., Wibisono, F.J., Effendi, M.H. 2019. Detection of *invA* gene of *Salmonella* from milkfish (*Chanos chanos*) at Sidoarjo wet fish market, Indonesia, using polymerase chain reaction technique. *Veterinary World.* 12 (1) : 170-175.



SURAT KETERANGAN

Nomor : 2518 /UN3.1.6/KP/2022

Yang bertanda tangan di bawah ini :

Nama : **Prof. Dr. Mustofa Helmi Effendi, drh., DTAPH**
NIP : 196201151988031002
Pangkat / Golongan : Pembina (Gol. IV/a)
Jabatan : Wakil Dekan III

Dengan ini menerangkan bahwa :

Nama : **Dr. Jola Rahmahani, drh., M.Kes**
NIP : 195807131986012001
Pangkat/Golongan : Pembina (IV/a)
Jabatan : Lektor Kepala

Telah melaksanakan penelitian dengan judul sebagai berikut :

No	Judul Karya Ilmiah	Tahun pelaksanaan Penelitian
1.	Antimicrobial Resistance Profile of Escherichia Coli From Cloacal Swab of Domestic Chicken in Surabaya Traditional Market.	2019
2.	Antimicrobial Resistance Profile of Escherichia Coli Bacteria Collected From Cloaca Swab of Broiler Chicken at Surabaya Traditional Market, Indonesia.	2019
3.	Presence of multidrug resistance (MDR) and extended-spectrum beta-lactamase (ESBL) of Escherichia coli isolated from cloacal swab of broilers in several wet markets in Surabaya, Indonesia.	2019
4.	Public Awareness for Antimicrobial Resistance from Escherichia coli Isolated from Beef Sold on Several Wet Market in Surabaya, Indonesia	2019
5.	Detection Of Encoding Gene Extended Spectrum Beta Lactamase On Escherichia Coli Isolated From Broiler Chicken Meat In Traditional Market Surabaya	2019
6.	Knowledge, attitude, and practices associated with avian influenza among undergraduate university students of East Java Indonesia: A cross-sectional survey.	2021

Adapun penelitian tersebut tidak perlu di lakukan *Uji Etical Clearence* karena tidak menggunakan hewan coba.



UNIVERSITAS AIRLANGGA

FAKULTAS KEDOKTERAN HEWAN

Kampus C Mulyorejo Surabaya 60115 Telp. (031) 5992785, 5993016 Fax (031) 5993015

Laman: <http://www.fkh.unair.ac.id>, e-mail: info@fkh.unair.ac.id

Demikian surat keterangan ini kami buat untuk dapat dipergunakan sebagai persyaratan pengusulan Jabatan Fungsional **Guru Besar**.

Surabaya, 07 Juli 2022

Wakil Dekan III



Prof. Dr. Mustofa Helmi Effendi, drh., DTAPH
NIP. 196201151988031002



ASEAN
University
Network

