



ISSN: 2097-0001

ANNALS OF MEDICINE & SURGERY



EDITIO • DILIGENTIA • FIDES

www.annalsjournal.com

ScienceDirect



[Search in this journal](#)

About the journal

[Aims and scope](#) [Editorial board](#) [Abstracting and indexing](#)

Editor-in-Chief

Riaz Agha
London, United Kingdom

Managing Editor

A.J. Fowler
London, United Kingdom

Executive Editor

M. Agha
London, United Kingdom

Executive Committee

D. Rosin
Bridgetown, Barbados

Professor Barry Jackson
London, United Kingdom

Statistical Editor

L.C. See
Taoyuan, Taiwan

Editorial Board

D.S. Bhandarkar
Mumbai, India

X-P. Chen
Wuhan, China

M. Cohen
Bundoora, Australia

D. Green
London, United Kingdom

S. Hamid
Karachi, Pakistan

P. Hutchinson
Cambridge, United Kingdom

P. Littlejohns
London, United Kingdom

A.K. Mahapatra
New Delhi, India

J. McKimm
Swansea, United Kingdom

D. Muzumdar
Mumbai, India

A.A. Nabar
Mumbai, India

F. Nicoli
London, United Kingdom

J. Norcini
Philadelphia, Pennsylvania, United States

D. Sokol
London, United Kingdom

J. Talati
Karachi, Pakistan

J.V. Thomas
Birmingham, Alabama, United States

M. C. Warlé
Nijmegen, Netherlands

T.G. Williams
Tunbridge Wells, United Kingdom

Assistant Editors

J. Kleef
Liverpool, United Kingdom

P. Schemmer
Graz, Austria

Associate Staff Editors

S. Acuna
Toronto, Canada

G. Alsfasser, MD
Rostock, Germany

F. Angarita, MD
Toronto, Ontario, Canada

J. Clark
London, United Kingdom

T.J. Evans
London, United Kingdom

A. Frampton
London, United Kingdom

Junior Staff Editors

S. Agrawal
Jodhpur, Rajasthan, India

B. Al-Dulaimy
London, United Kingdom

Y. Al Omran
London, United Kingdom

M.O. Anwar
London, United Kingdom

M.R. Borrelli
London, United Kingdom

K.A. Burke
Manchester, United Kingdom

A. Cristaudo
Caboolture, Australia

B. Gundogan
Stevenage, United Kingdom

A. Gwozdz
London, United Kingdom

M.S. Hu
Stanford, California, United States

T. Joseph
London, United Kingdom

K. Koshy
London, United Kingdom

S.Y. Lee
Southampton, United Kingdom

C. Limb
London, United Kingdom

D. Mani
Puyallup, Washington, United States

K. Shah
Oxford, United Kingdom

R. Thavayogan
Nottingham, United Kingdom

M. Vella-Baldacchino
Glasgow, United Kingdom

ISSN: 2049-0801

Copyright © 2020 Surgical Associates Ltd. All rights reserved



[About ScienceDirect](#)

[Remote access](#)

[Shopping cart](#)

[Advertise](#)

[Contact and support](#)

The RELX logo, consisting of a stylized orange 'R' followed by the word 'RELX' in black capital letters and a trademark symbol.



[Submit your article](#)

[Guide for Authors](#)

[Latest issue](#)

[All issues](#)



[Search in this journal](#)

Volume 57

Pages 1-360 (September 2020)

[Download full issue](#)

[< Previous vol/issue](#)

[Next vol/issue >](#)

Receive an update when the latest issues in this journal are published

[Sign in to set up alerts](#)

Open access

Editorial Board

Page i

[Download PDF](#)

Editorial

Surgical consent during the COVID19 pandemic: Saving lives while in crisis editorial

Evander Meneses, Mark McKenney, Dessy Boneva, Adel Elkbuli

Pages 163-165

[Download PDF](#)

Letters to Editor

Short communication *Open access*

Letter to editor: The evidence-base for the management of flexor tendon injuries of the hand: Review

Jing Chen, Zhang Jun Pan

Pages 351-352

[Download PDF](#)

Original Research

Research article *Open access*

Prevalence of positive COVID-19 among asymptomatic health care workers who care patients infected with the novel coronavirus: A retrospective study

Nabil A. Al-zoubi, Basil R. Obeidat, Mohammad A. Al-Ghazo, Wail A. Hayajneh, ... Abdelwahab Aleshawi

Pages 14-16

[Download PDF](#) [Article preview](#) 

Research article *Open access*

Rhinofacial entomophthoramyiasis case series, the unusual cause of facial swelling

Saisawat Chaiyasate, Parichat Salee, Kornkanok Sukapan, Tanyathorn Teeranoraseth, Kannika Roongrotwattanasiri

Pages 41-45

[Download PDF](#) [Article preview](#) 

Research article *Open access*

Risk factors of pilonidal sinus disease in preparatory school students; a case control study

Faruq H. Faraj, Hiwa O. Baba, Abdulwahid M. Salih, Fahmi H. kakamad

Pages 46-48

[Download PDF](#) [Article preview](#) 

Research article *Open access*

Effects of thyroid dysfunction on hematological parameters: Case controlled study

Sawer Sabri Ahmed, Ayad Ahmad Mohammed

Pages 52-55

[Download PDF](#) Article preview 

Research article *Open access*

Preoperative systemic inflammatory biomarkers and postoperative day 1 drain amylase value predict grade C pancreatic fistula after pancreaticoduodenectomy

Damiano Caputo, Alessandro Coppola, Chiara Cascone, Silvia Angeletti, ... Roberto Coppola

Pages 56-61

[Download PDF](#) Article preview 

Research article *Open access*

Impact of COVID-19 on laboratory professionals-A descriptive cross sectional survey at a clinical chemistry laboratory in a developing country

Lena Jafri, Sibtain Ahmed, Imran Siddiqui

Pages 70-75

[Download PDF](#) Article preview 

Research article *Open access*

Combination adjunctive nebulized furosemide and salbutamol versus single agent therapy in COPD patients: A randomized controlled trial

Mohammadali Saba, Abdoulhossein Davoodabadi, Azin Ghaffari, Hamidreza Gilasi, Babak Haghpanah

Pages 85-90

[Download PDF](#) Article preview 

Research article *Open access*

Global management of a common, underrated surgical task during the COVID-19 pandemic: Gallstone disease - An international survey

Tommaso Maria Manzia, Roberta Angelico, Alessandro Parente, Paolo Muiesan, ... Deswysen Yannick

Pages 95-102

[Download PDF](#) Article preview 

Research article *Open access*

COVID-19 outbreak in Jordan: Epidemiological features, clinical characteristics, and laboratory findings

Shaher M. Samrah, Abdel-Hameed W. Al-Mistarehi, Ali M. Ibnian, Liqaa A. Raffee, ... Basheer Y. Khassawneh

Pages 103-108

[Download PDF](#) Article preview 

Research article *Open access*

Modification of the Marmarou model in developing countries

Rizha Anshori Nasution, Andi Assadul Islam, Mochammad Hatta, Prihantono, ... Harakati Wangi

Pages 109-113

[Download PDF](#) Article preview 

Research article *Open access*

Role of CAPE in reducing oxidative stress in animal models with traumatic brain injury

Rizha Anshori Nasution, Andi Asadul Islam, Mochammad Hatta, Prihantono, ... Muhammad Faruk

Pages 118-122

[Download PDF](#) Article preview 

Research article *Open access*

Impact of COVID-19 pandemic on residency and fellowship training programs in Saudi Arabia: A nationwide cross-sectional study

Ameera Balhareth, Mohammed Abdulrazzaq AlDuhileb, Fozan A Aldulaijan, Mohammed Yousef Aldossary

Pages 127-132

[Download PDF](#) Article preview 

Research article *Open access*

A retrospective analysis of emergency surgery for cases of acute abdomen during cancer chemotherapy. Case series

Yoshiaki Maeda, Toshiki Shinohara, Nozomi Minagawa, Tadayuki Kobayashi, ... Haruka Hasegawa

Pages 143-147

[Download PDF](#) Article preview 

Research article *Open access*

Stroke care and outcomes in the Department of Neurology in Parakou, Benin: Retrospective cohort study

Thierry Adoukonou, Mendinatou Agbétou, Arlos Sowanou, Oyéné Kossi, ... Philippe Lacroix

Pages 148-152

[Download PDF](#) Article preview 

Research article *Open access*

Effectiveness of a multi-session combined near-peer and faculty-led surgical skills course on self-perceived ability to perform basic surgical skills

Billy Down, Simon Morris, Sagar Kulkarni, Kamran Mohiuddin

Pages 153-156

[Download PDF](#) Article preview 

Research article *Open access*

Gender discrimination against female surgeons: A cross-sectional study in a lower-middle-income country

Mahin B. Janjua, Hina Inam, Russell S. Martins, Nida Zahid, ... Mahim A. Malik

Pages 157-162

[Download PDF](#) Article preview 

Research article *Open access*

Spectrum of liver diseases in patients referred for Fibroscan: A single center experience in the Middle East

Bisher Sawaf, Adel Hajj Ali, Rola F. Jaafar, Mariam Kanso, ... Walid Faraj

Pages 166-170

[Download PDF](#) [Article preview](#) 

Research article *Open access*

Selective prophylactic lateral node dissection improves the ipsilateral lateral node recurrence-free survival:

A retrospective single-center cohort study

Makoto Fujishima, Akira Miyauchi, Yasuhiro Ito, Takumi Kudo, ... Akihiro Miya

Pages 190-195

[Download PDF](#) [Article preview](#) 

Research article *Open access*

The practice of intracytoplasmic sperm injection in Jordan: A clinical outcome study

Omar F. Altal, Abdelwahab J. Aleshawi, Mohammad Z. Khrais, Bouran M. Alkilany, ... Faheem Zayed

Pages 196-200

[Download PDF](#) [Article preview](#) 

Research article *Open access*

The effects of alcohol and marijuana on survival after severe traumatic brain injury: A retrospective cohort study

John J. Leskovan, Puja D. Patel, John M. Pederson, Aaron Moore, ... Laura R. Brown

Pages 201-204

[Download PDF](#) [Article preview](#) 

Research article *Open access*

Medical negligence - Key cases and application of legislation

Rajkumar Cheluvappa, Selwyn Selvendran

Pages 205-211

[Download PDF](#) [Article preview](#) 

Research article *Open access*

Comparative outcomes in different aortic valve stenosis surgeries and implications of TAVR surgery for cirrhotic patients: A retrospective cohort study

Maria Winte, Krysta Contino, Aditi Trivedi, Nikhita Dharbhamulla, ... Sangita Phadtare

Pages 244-248

[Download PDF](#) [Article preview](#) 

Research article *Open access*

Analysis of prognostic factors in soft tissue sarcoma: Cancer registry from a single tertiary hospital in Indonesia. A retrospective cohort study

Ferdiansyah Mahyudin, Mouli Edward, Muhammad Hardian Basuki, Yunus Basrewan, ... Adhinanda Gema Wahyudiputra
Pages 257-263

[Download PDF](#) Article preview 

Research article *Open access*

'Is totally endoscopic coronary artery bypass grafting compared with minimally invasive direct coronary artery bypass grafting associated with superior outcomes in patients with isolated left anterior descending disease?'

Lucy Manuel, Laura S. Fong, Hugh Wolfenden, Levi Bassin
Pages 264-267

[Download PDF](#) Article preview 

Research article *Open access*

Do your surgical glove characteristics and wearing habits affect your tactile sensibility?

Philipp Moog, Manuela Schulz, Julia Betzl, Daniel Schmauss, ... Holger C. Erne
Pages 281-286

[Download PDF](#) Article preview 

Research article *Open access*

Neurosurgery specialty training in the UK: What you need to know to be shortlisted for an interview

Giorgos Solomou, Suzanne Murphy, Soham Bandyopadhyay, Hugo Layard Horsfall, ... Nigel Mendoza
Pages 287-290

[Download PDF](#) Article preview 

Research article *Open access*

Safety and efficacy of the treatment of chronic anal fissure by lateral internal sphincterotomy: A retrospective cohort study

Fatma Al-thoubaity
Pages 291-294

[Download PDF](#) Article preview 

Research article *Open access*

Ocular findings in children with attention deficit hyperactivity disorder: A Case–Control study

Laila T. Ababneh, Mahmoud Bashtawi, Bayan F. Ababneh, Ikhlas H. Mahmoud, ... Mohammad Zahran
Pages 303-306

[Download PDF](#) Article preview 

Research article *Open access*

P53 expression and micro-vessel density in relation with 5-year survival in patients with colorectal cancer

Ayad Ahmad Mohammed, Sardar Hassan Arif, Intisar Salim Pity

Pages 311-314

[Download PDF](#) [Article preview](#) 

Research article *Open access*

The weekend effect – How can it be mitigated? Introduction of a consultant-delivered emergency general surgical service

Khevan Somasundram, Jonathan J. Neville, Yashashwi Sinha, Tushar Agarwal, ... Hemant Sheth

Pages 315-320

[Download PDF](#) [Article preview](#) 

Research article *Open access*

Prognostic factors for long-term survival after pancreaticoduodenectomy for periampullary adenocarcinoma. A retrospective cohort study

Hazem Zakaria, Ahmed N. sallam, Islam I. Ayoub, Emad H. Gad, ... Taha Yassein

Pages 321-327

[Download PDF](#) [Article preview](#) 

Research article *Open access*

Effects of caffeic acid phenethyl ester in reducing cerebral edema in rat subjects experiencing brain injury: An in vivo study

Rizha Anshori Nasution, Andi Asadul Islam, Mochammad Hatta, Prihantono, ... Khairul Ihsan Nasution

Pages 328-333

[Download PDF](#) [Article preview](#) 

Research article *Open access*

Factors influencing the occurrence of biliary stricture above the confluence in major bile ducts injuries: Analysis of a case series

Anisse Tidjane, Nabil Boudjenan Serradj, Nacim Ikhlef, Nouredine Benmaarouf, Benali Tabeti

Pages 334-338

[Download PDF](#) [Article preview](#) 

Research article *Open access*

Plexiform neurofibroma with neurofibromatosis type I/ von Recklinghausen's disease: A rare case report

Pooja Poswal, Namita Bhutani, Sunil Arora, Raj Kumar

Pages 346-350

[Download PDF](#) [Article preview](#) 

Review article [Open access](#)

A scoping review of the impact of COVID-19 pandemic on surgical practice

Amjad Soltany, Mohammed Hamouda, Ansam Ghzawi, Ahmed Sharaq, ... Amira Yasmine Benmelouka

Pages 24-36

[Download PDF](#) [Article preview](#) 

Review article [Open access](#)

The role of multiparametric magnetic resonance imaging and magnetic resonance-guided biopsy in active surveillance for low-risk prostate cancer: A systematic review

Sultan Zaher Alshehri, Omar Safar Alshahrani, Nazal Ahmed Almsaoud, Muhammad Ahmad Al-Ghamdi, ... Abdulrahim Mohammed Alamri

Pages 171-178

[Download PDF](#) [Article preview](#) 

Review article [Open access](#)

Pilonidal sinus disease: Review of current practice and prospects for endoscopic treatment

Fahad Mahmood, Anwar Hussain, Akinfemi Akingboye

Pages 212-217


[Download PDF](#) [Article preview](#) 

Review article [Open access](#)

Closure of the appendiceal stump in laparoscopic appendectomy: A systematic review of the literature

N. Makaram, S.R. Knight, A. Ibrahim, P. Patil, M.S.J. Wilson

Pages 228-235

[Download PDF](#) [Article preview](#) 

Review article [Open access](#)

Cardiovascular involvement during COVID-19 and clinical implications in elderly patients. A review

Claudio Napoli, Isabella Tritto, Giuditta Benincasa, Gelsomina Mansueto, Giuseppe Ambrosio

Pages 236-243

[Download PDF](#) [Article preview](#) 

Case Reports

Case report [Open access](#)

Traumatic bifid tongue: A rare presentation in a child. Case report

Ajaipal S. Kang, Kevin S. Kang

Pages 11-13

[Download PDF](#) [Article preview](#) 

Case report [Open access](#)

Surgical treatment of diffuse idiopathic skeletal hyperostosis of cervical spine with dysphagia – Case report

Mikołaj Dąbrowski, Adam Sulewski, Jacek Kaczmarczyk, Łukasz Kubaszewski

Pages 37-40

[Download PDF](#) [Article preview](#) 

Case report [Open access](#)

A rare case of three years disease free survival in a locally advanced parathyroid carcinoma successfully excised by complete surgical resection

Abdul Ahad Sohail, Bushra Ayub, Syed Akbar Abbas, Shafqat Ali Sheikh, ... Asad Diwan

Pages 62-65

[Download PDF](#) [Article preview](#) 

Case report [Open access](#)

Jejunal perforation during peritoneal dialysis catheter placement: A case report

Sukit Raksasuk, Voraboot Taweerutchana, Thatsaphan Srithongkul

Pages 66-69

[Download PDF](#) [Article preview](#) 

Case report [Open access](#)

Perforated proximal jejunal gastrointestinal stromal tumor pT4N0M0 presenting with severe sepsis: A case report and literature review

Evander Meneses, Adel Elkbuli, Amanda Baroutjian, Mark McKenney, Dessy Boneva

Pages 76-81

[Download PDF](#) [Article preview](#) 

Case report [Open access](#)

Atrioesophageal fistula with meningitis: A rare complication of atrial fibrillation ablation, case report and literature review

Kayle Warren, Pratihtha Singh, Austen Stoelting, Shawn Esperti, ... Thaddeus Golden

Pages 91-94

[Download PDF](#) [Article preview](#) 

Case report [Open access](#)

Traumatic perforated diverticulum of the fourth duodenal portion: First case report and literature review

Valentina Palumbo, Maria Sofia, Edoardo Mattone, Rosario Bonaccorso, ... Saverio Latteri

Pages 114-117

[Download PDF](#) Article preview 

Case report *Open access*

Combined surgical and negative pressure therapy to treat multiple enterocutaneous fistulas and abdominal abscesses: A case report

Gaetano Luglio, Alfonso Amendola, Gianluca Pagano, Francesca Paola Tropeano, ... Giovanni Domenico De Palma
Pages 123-126

[Download PDF](#) Article preview 

Case report *Open access*

Staphylococcal toxic shock syndrome in a lactating mother with breast abscess: A case report

Kamal Pandit, Sushil Khanal, Prabhat Adhikari, Samaj Adhikari, Subhash Prasad Acharya
Pages 133-136

[Download PDF](#) Article preview 

Case report *Open access*

Eventration of right diaphragm with an intrathoracic ectopic kidney: A case report

Gunadi, Naisya Balela, Marcellus, Aditya Rifqi Fauzi, Andi Dwihantoro
Pages 179-182

[Download PDF](#) Article preview 

Case report *Open access*

Transorbital-penetrating intracranial injury due to a homemade metal arrow: A case report

Eko Prasetyo, Maximillian Christian Oley, Vera Sumual, Muhammad Faruk
Pages 183-189

[Download PDF](#) Article preview 

Case report *Open access*

Laparoscopic cholecystectomy for cholecystitis using direct gallbladder indocyanine green injection fluorescence cholangiography: A case report

Toshikatsu Nitta, Jun Kataoka, Masato Ohta, Yasuhiko Ueda, ... Takashi Ishibashi
Pages 218-222

[Download PDF](#) Article preview 

Case report *Open access*

Neglected subluxation of the hip after trauma: A case report

Shohei Matsubayashi, Eri Kanzaki, Ritsu Tsujimoto, Makoto Osaki, Akifusa Wada
Pages 223-227

[Download PDF](#) Article preview 

Case report *Open access*

Tuberculous tenosynovitis of the Flexor Tendons of the hand and wrist: A case report and mini-review

Sitthiphong Suwannaphisit, Nakares Na Ranong

Pages 249-252

[Download PDF](#) [Article preview](#) 

Case report *Open access*

The successful management for long-term intractable enteroatmospheric fistula: A case report

Kyota Tatsuta, Takeshi Oshima, Hisato Ishimatsu, Hiroyuki Hazama, Ko Ohata

Pages 253-256

[Download PDF](#) [Article preview](#) 

Case report *Open access*

Acquired choledochal cyst following intraabdominal tumor surgical excision: A case report

Gunadi, Ramadhita, Aditya Rifqi Fauzi, Devy Melati, ... Wahyu Damayanti

Pages 270-273

[Download PDF](#) [Article preview](#) 

Case report *Open access*

Presacral myelolipoma, case report and literature review

Andriandi, A.H.G. Cleven, D.F. Hanff, H. Hartgrink, P.D.S. Dijkstra

Pages 274-280

[Download PDF](#) [Article preview](#) 

Case report *Open access*

Amyloid goiter - A rare case report and literature review

Eisa Lari, Waleed Burhamah, Ali Lari, Salman Alsafran, Ali Ismail

Pages 295-298

[Download PDF](#) [Article preview](#) 

Case report *Open access*

Necrotizing neutrophilic dermatosis: A diagnostic challenge with a need for multi-disciplinary recognition, a case report

Asha Gowda, Luisa Christensen, Samantha Polly, Danny Barlev

Pages 299-302

[Download PDF](#) [Article preview](#) 

Case report *Open access*

Challenging lymphoid malignancy of primary central nervous system lymphoma: A case report

Ganesh Kasinathan, Ahlam Naila Kori, Nurhidayah Hassan

Pages 307-310

[Download PDF](#) [Article preview](#) 

Case report [Open access](#)

Surgical application of the keystone island flap for closure of thoracolumbar myelomeningocele defects - A case report

Mohamed Amir Mrad, Ahmad Alharbi, Nehal Mahabbat, Atif Rafique, Fuad Hashem

Pages 339-342

[Download PDF](#) [Article preview](#) 

Case report [Open access](#)

Bilioenteric bypass stricture type II with hepatolithiasis: A case report

Warsinggih, Amir Fajar, Ibrahim Labeda, Julianus Aboyanan Uwuratuw, ... Muhammad Faruk

Pages 353-357

[Download PDF](#) [Article preview](#) 

Perspective

Short communication [Open access](#)

Divides of identity in medicine and surgery: A review of duty-hour policy preference

Connor T.A. Brenna, Sunit Das

Pages 1-4

[Download PDF](#) [Article preview](#) 

Short communication [Open access](#)

Evaluation of colonoscopy data for colorectal polyps and associated histopathological findings

Mohammad Kazem shahmoradi, Maryam Soleimaninejad, Masoud Sharifian

Pages 7-10

[Download PDF](#) [Article preview](#) 

Short communication [Open access](#)

Application of the sociology theory ethnomethodology to medical education: Utilization of small group learning to combat unconscious bias in patient care

Arash Ghaffari-Rafi, Shadeh Ghaffari-Rafi, Rachel Elizabeth Lee, Innocent Aforlabi-Logoh, ... Jose Leon-Rojas

Pages 17-19

[Download PDF](#)

Commentaries

Short communication *Open access*

A mathematical model to guide the re-opening of economies during the COVID-19 pandemic

Habib Noorbhai

Pages 5-6

[Download PDF](#) [Article preview](#) 

Short communication *Open access*

Lessons learned: Commentary on patient harm related to COVID-19 prevention policies at a rural academic tertiary care facility

Abhinav Mittal, Kyle Davis Chapman, Michael Forte, Hatim Al-Jaroushi

Pages 20-21

[Download PDF](#)

Short communication *Open access*

A sharp increase in the number of COVID-19 cases and case fatality rates after lifting the lockdown in Kurdistan region of Iraq

Nawfal R. Hussein, Ibrahim A. Naqid, Zana Sidiq M. Saleem, Lokman A. Almizori, ... Nashwan Ibrahim

Pages 140-142

[Download PDF](#) [Article preview](#) 

Short communication *Open access*

Research and intervention priorities for mental health of people living with chronic disease(s) in the midst of the COVID-19 pandemic in low resource settings: A commentary

Tsegaye Melaku, Desta Assefa, Bodena Bayisa, Negase Legese

Pages 268-269

[Download PDF](#)

Short communication *Open access*

Comment on “Comparing open conventional carpal tunnel release with mini-incision technique in the treatment of carpal tunnel syndrome - a non-randomized clinical trial”

Alex Haiser, Chloe L. Jordan

Pages 358-359

[Download PDF](#)

Short Communications

Short communication *Open access*

Comment on: Effects of time of initiation of antiretroviral therapy in the treatment of patients with HIV/TB co-infection, by Chelkeba L. et al

François-Xavier Blanc, Didier Laureillard, Anne E. Goldfeld

Pages 22-23

[Download PDF](#)

Short communication *Open access*

The impact of COVID-19 on the surgical operations

Tagleb S. Mazahreh, Abdelwahab J. Aleshawi, Nabil A. Al-Zoubi, Moad Hatamleh, Alaa Hmedat

Pages 49-51

[Download PDF](#)

Short communication *Open access*

Living donor liver transplantation for intra hepatic cholangiocarcinoma

Abu Bakar Hafeez Bhatti, Rizmi Tahir, Najla Rahman Qureshi, Nadira Mamoon, ... Haseeb Haider Zia

Pages 82-84

[Download PDF](#)

Short communication *Open access*

Wet labs: A useful tool in training surgical residents in a third world country

Hina Inam, Narmeen Asif, Abdul Ahad Sohail, Saulat Hasnain Fatimi

Pages 137-139

[Download PDF](#)

Short communication *Open access*

Setting up a COVID-19 care facility at a prison: An experience from Pakistan

Mahmood Ayyaz, Usman Ismat Butt, Muhammad Umar, Wasim Hayat Khan, Muhammad Waris Farooka

Pages 343-345

[Download PDF](#) [Article preview](#) 

[< Previous vol/issue](#)

[Next vol/issue >](#)

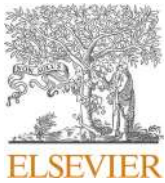
ISSN: 2049-0801

Copyright © 2020 IJS Publishing Group Ltd. All rights reserved



About ScienceDirect

 RELX™



Cross-sectional Study

Analysis of prognostic factors in soft tissue sarcoma: Cancer registry from a single tertiary hospital in Indonesia. A retrospective cohort study

Ferdiansyah Mahyudin^{*}, Mouli Edward, Muhammad Hardian Basuki, Yunus Basrewan, Kukuh Dwiputra Hernugrahanto, Adhinanda Gema Wahyudiputra

Department of Orthopedics & Traumatology, Faculty of Medicine, Universitas Airlangga / Dr. Soetomo General Hospital, Jl. Rungkut Mapan FD-2, Surabaya, East Java, Indonesia



ARTICLE INFO

Keywords:

Distant metastasis
Local recurrence
Modified glasgow prognostic score
Neutrophils/lymphocytes ratio
Overall survival
Soft tissue sarcoma

ABSTRACT

Background: Soft tissue sarcoma is one cause of mortality in adult malignancies. This tumor is rare, persistent, and highly-recurrent. Many patients are came in late stage. It is important to identify a prognostic tool that is reliable, easily obtainable, and widely applicable. The aim of this study is to investigate and analyze the prognostic value of clinicopathological and biomarker factors in patients with soft tissue sarcoma.

Methods: This retrospective study extracts data from the musculoskeletal tumor registry from January 2012 to December 2018 in a single tertiary hospital. Eighty patients with diagnosis of soft tissue sarcoma were included. Preoperative modified Glasgow Prognostic Score, Neutrophils/Lymphocytes Ratio, Hemoglobin, serum lactate dehydrogenase data were analyzed along with demographic, clinical, radiological and histopathological data. The relationship between variables on overall survival, distant metastasis, and local recurrence were evaluated using univariate and multivariate Cox regression.

Results: On univariate analysis, there was significant relationship between hemoglobin, Neutrophils/Lymphocytes Ratio and modified Glasgow Prognostic Score with overall survival ($p = 0.031$, $HR = 1.99$; $p = 0.04$, $HR = 1.129$; and $p = 0.044$, $HR = 3.89$). A significant relationship was found between age and soft tissue sarcoma stage with distant metastasis ($p = 0.046$, $HR = 1.95$; and $p = 0.00$, $HR = 3.22$). In addition, we also found significant relationship between surgical margin with local recurrence ($p = 0.018$, $OR = 3.44$). However, on multivariate analysis the independent prognostic factor for overall survival was only modified Glasgow Prognostic Score ($HR = 2.138$; $p = 0.011$). Stage IIIA ($HR = 5.32$; $p = 0.005$) and IIIB ($HR = 13.48$; $p = 0.00$) were independent prognostic for distant metastasis. Surgical margin was independently associated with local recurrence ($HR = 14.84$; $p = 0.001$).

Conclusion: Modified Glasgow Prognostic Score can be used as prognostic tool of overall survival in soft tissue sarcoma patients. Moreover, stage of STS and surgical margin can be used as a prognostic factor for distant metastasis and local recurrence of soft tissue sarcoma respectively.

1. Introduction

Soft tissue sarcoma (STS) is a rare and persistent malignant tumor originating in mesenchymal tissue of any organs except bones and cartilage. It constitutes only 1–2% of malignancies in adults. About 75% of the tumor involves the extremities [1,2]. Data from a national referral hospital for cancer in Indonesia showed that STS is among the ten most common cancer cases in 2013 [3]. Unfortunately, most patients come late for diagnosis [1,2]. Despite adequate treatment protocol, patients

with high-grade STS are still at risk for recurrence and distant metastasis. In the United States it is estimated that in 2020 there will be 13,130 STS cases with a five-year survival rate of 16–81% [4,5].

Since fifteen years ago, prognostic tools for STS have been limited to the use of clinical and histopathological factors such as age at the time of diagnosis, tumor size, histological grade and subtype, tumor depth and location, and tumor margin [6,7]. Therefore, it is important to identify a prognostic tool that is reliable, easily obtainable, and widely applicable to improve the ability of risk stratification and to help with treatment

^{*} Corresponding author.

E-mail addresses: ferdiansyah@fk.unair.ac.id (F. Mahyudin), mouli-edward@fk.unair.ac.id (M. Edward), basukimh@gmail.com (M.H. Basuki), ynsortho@gmail.com (Y. Basrewan), kukuhdh@gmail.com (K.D. Hernugrahanto), adhinandagemamd@gmail.com (A.G. Wahyudiputra).

<https://doi.org/10.1016/j.amsu.2020.07.053>

Received 16 June 2020; Received in revised form 24 July 2020; Accepted 26 July 2020

Available online 7 August 2020

2049-0801/© 2020 IJS Publishing Group Ltd. Published by Elsevier Ltd. This is an open access article under the CC BY license

(<http://creativecommons.org/licenses/by/4.0/>).

guideline.

Previous studies showed that inflammatory process and its biomarkers have been known to play important roles in STS progression [8, 9]. The haemoglobin level and some biomarkers, like c-reactive protein (CRP), Neutrophil/Lymphocyte ratio (NLR), and C-Reactive Protein/Albumin ratio (CAR), could serve as promising prognostic factors [10–13]. Another study on modified Glasgow Prognostic Score (mGPS) using combination of albumin and CRP showed that mGPS could predict the outcome in cancer cases although it did not specifically predict those of distant metastasis and local recurrence [11]. To our best knowledge, the studies to analyze the prognostic factors of STS, especially in emergent nations, are still limited. The aim of this study is to investigate and analyze prognostic value of clinicopathological and biomarker factors in patients with STS.

2. Methods

2.1. Study design

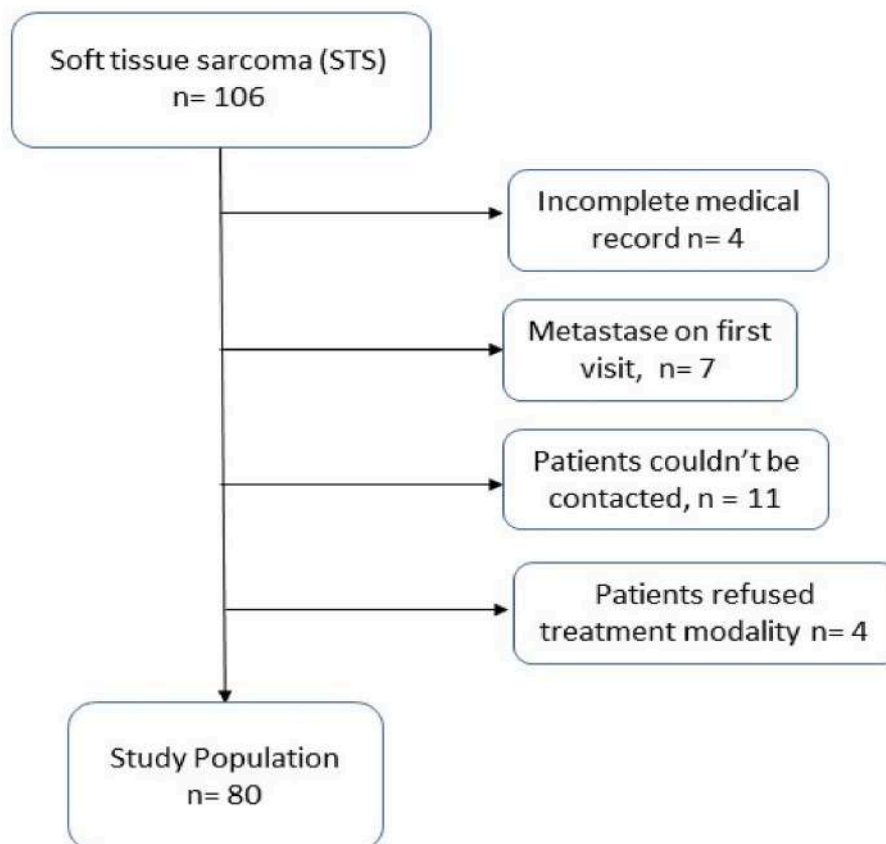
This is a retrospective study. Between January 2, 2012 to December 30, 2018, 106 patients with diagnosis of STS at Dr. Soetomo General Academic Hospital, a tertiary hospital in Indonesia, were recorded. All patients were registered in the musculoskeletal tumor registry. This registry collects patients' demographic data; preoperative, intra-operative, and postoperative data that include laboratory, radiological, and histopathological examination; treatment protocol; and post-operative follow-up including any complication or mortalities that may occur. The diagnosis and treatment protocols of STS in all patients were discussed and decided in a Clinico-pathological Conference (CPC) between pathologists, radiologists, oncologist, and orthopaedic surgeons.

2.2. Clinical data collection

The inclusion criteria were all patients with diagnosis of STS that had followed the hospital's treatment protocol with minimum follow-up of one year. Patients with incomplete registry, failure to comply with treatment and follow-up protocol, metastasis prior to treatment, and history of blood disorders, such as anemia, thalassemia, or other similar abnormality were excluded from the study. Out of 106 patients, only 80 patients were eligible for the study (Fig. 1). Independent variables in this study were age, tumor size, cancer stage, tumor anatomy location, tumor type, hemoglobin, NLR, mGPS, serum lactate dehydrogenase (LDH), type of therapy and surgical margin.

The laboratory data were taken preoperatively one to three days before the surgery was performed. Haemoglobin level were divided into three categories: (1) low (<13 mg/dL male, <11 mg/dL female), (2) normal (13–16 mg/dL male, 11–14 mg/dL female) and (3) high (>16 mg/dL male and > 14 mg/dL in women). The mGPS was classified using the value of CRP and albumin. Patients were scored 2 if they had an increase in CRP (>1.0 mg/dL) and a low albumin (<3.5 g/dL); scored 1 with increased CRP alone and scored 0 with normal CRP [10]. The NLR were obtained from the ratio of the total number of neutrophils to lymphocytes measured from an analysis of complete blood count. NLR was high if the value is ≥ 5 [14]. LDH level was high if the values > 200 IU/L [14].

Clinicopathological data were tumor size, histopathological diagnosis, tumor stage and surgical margin. Tumor size was defined as the maximum diameter of the tumor obtained from MRI examination. Histopathological examination was performed and confirmed by two senior consultants of musculoskeletal pathologist. STS tumor types followed the latest WHO's 2013 classification. Tumor stages were divided into four: I, II, III, IV, in accordance with the system of the American Joint Committee on Cancer Staging (AJCC) and the 7th edition of the



Flow Chart 1. The process of determining the study population.

International Union Against Cancer (IUCC). Surgical margins were divided into two based on R+1 mm classification: specimens with tumor within 1 mm of the inked border were categorized as microscopically positive (R1), and R0 if there was at least 1 mm of healthy tissue from the inked border [15]. All of the patients underwent therapy in accordance with the STS treatment protocol at the hospital. The treatments were either wide excision or radical excision, with or without chemotherapy or radiotherapy (Table 1). Inoperable patients were treated with chemotherapy and radiotherapy. This study had received ethical approval by the hospital's ethical committee.

2.3. Statistical analysis

The end-points for univariate and multivariate analyses were overall survival (OS), local recurrence (LR), and distant metastasis (DM). Overall survival (OS) time was calculated from the date of the diagnosis

Table 1 Characteristics of STS patients.

		n	Percentage (%)
Age	<20 years	11	13.8
	20–40 years	27	33.8
	40–60 years	33	41.3
	>60 years	9	11.3
Tumor Location	Shoulder	4	5.0
	Forearm	12	15.0
	Hand	4	5.0
	Thigh	38	47.5
	Leg	14	17.5
	Pelvic	4	5.0
	Arm	3	3.8
	Back	1	1.3
	Stage II	10	12.5
Tumor Stage	Stage IIIA	21	26.3
	Stage IIIB	49	61.3
	Tumor type	10	12.5
Tumor type	Synovial Sarcoma	4	5.0
	Rhabdomyosarcoma	19	23.8
	Undifferentiated pleomorphic sarcoma	2	2.5
	Extraskeletal Osteosarcoma	1	1.3
	Phosphaturic mesenchymal tumor	2	2.5
	Leiomyosarcoma	4	5.0
	Undifferentiated round cell sarcoma	3	3.8
	Myxofibrosarcoma	5	6.3
	Malignant peripheral nerve sheath tumor (MPNST)	3	3.8
	liposarcoma dedifferentiated	1	1.3
	Desmoplastic small round cell tumor	7	8.8
	Adult Fibrosarcoma	2	2.5
	Low grade fibromyxoid sarcoma	1	1.3
	Extraskeletal mesenchymal chondrosarcoma	2	2.5
	Malignant solitary fibrous tumor (malignant SFT)	2	2.5
	Embryonal rhabdomyosarcoma	9	11.3
	Undifferentiated spindle cell sarcoma	1	1.3
	Malignant variant of diffuse type tenosynovial giant cell tumor	1	1.3
	Myxoid liposarcoma	1	1.3
	Extraskeletal myxoid chondrosarcoma	9	11.3
Tumor Size	<5 cm	21	26.3
	5–10 cm	50	62.5
	>10 cm	11	13.8
Type of Therapy	Amputation (A)	8	10.0
	Amputation Chemotherapy (AK)	4	5.0
	Amputation Chemotherapy Radiotherapy (AKR)	2	2.5
	Amputation Radiotherapy (AR)	20	25.0
	Wide Excision (W)	13	16.3
	Wide Excision Chemotherapy (WK)	11	13.8
	Wide Excision Radiotherapy Chemotherapy (WKR)	8	10.0
	Wide Excision Radiotherapy (WR)	3	3.8
	Chemotherapy Radiotherapy (KR)		

n: number.

to the date of death regardless of any cause. Deaths up to December 2019 were included. Local recurrence (LR) was defined as recurrence of the same histological type of sarcoma in the same region of previous tumor, and confirmed by biopsy. Distant metastasis (DM) was defined as the cancer that had spread from the original (primary) tumor to distant organs or distant lymph nodes. The study were presented in line with the STROCSS criteria [16]. Univariate survival analysis was done using Kaplan-Meier survival method and log rank test for statistical significance. A two-sided value of p < 0.05 was referred to as significant. Multivariate analysis was calculated using Cox Proportional hazard regression model with stepwise backward procedure. Only significant variables in univariate analysis that were included in the multivariate analysis. All statistical analysis used SPSS 23 software (SPSS Inc., Chicago, IL, USA).

3. Results

There were 46 male (57.5%) and 34 female (42.5%) patients. The mean and median age of the patients at the time of diagnosis was 41.69 ± 18.16 and 42 years. Majority of the patients were in 40–60 years old (41.3%) followed with the age group of 20–40 years old (3.8%). The mean follow-up time was 32 months (range 13–71 months). During the follow-up period, 23.5% patients died, 33.8% developed local recurrence, and 21.2% developed DM. The median OS was 32 months.

More than 60% anatomic site of the tumor were in lower extremity. Undifferentiated round cell sarcoma was the most common tumor type found in this study (23.8%). More than 50% patients came in stage IIIB. More than 60% of the patients had lesions >10 cm. More than 60% patients had wide excision as the surgical procedure. Based on our study there were 2 out of 42 patients with soft tissue sarcoma in femoral and pelvic region that had bone marrow violation. The characteristics of tumor location, stage, histological diagnoses, size, and therapy modalities are shown in Table 1. Thirty six patients (45%) scored normal mGPS while the other 28 (35%) and 16 (20%) patients scored mGPS score of 1 and 2 respectively. Thirty three patients scored high NLR (41.25%). Thirty eight patients had high LDH level (47.5%). Forty seven patients were anemia (58.75%). Mean values of NLR, LDH, haemoglobin level were 5.4 ± 18.16, 245.41 ± 188.69, and 11.75 ± 2.23 respectively. Based on surgical margin, the proportion of patients with R0 and R1 categories was 72.5% (58 patients) and 27.5% (22 patients) respectively. Table 2 shows the results of univariate cox regression tests based on OS, DM, and local recurrence. There were significant associations in mGPS (p = 0.044), NLR (p = 0.04), and Hb level (p = 0.031) with OS. The other variables were not significant. There were significant associations between age and tumor stage with DM, with a p-value of 0.046 and 0.00 respectively.

There was a significant difference in surgical margin with LR (p = 0.018, HR = 3.44). There was no significant relationship in univariate analysis between modality of therapy with OS (p = 0.698), DM (p = 0.415) and LR (p = 0.467).

The log rank test for mGPS on OS Kaplan Meier curve (Fig. 2) was significant (p = 0.018). Patients with mGPS 0 had overall one-year and three-year survival rates of 93.3% and 50.3% respectively. Lower overall one-year and three-year survival rates (85.2% and 33% respectively) were observed in patients with mGPS 1. Patients with mGPS 2 had the lowest one-year OS rate of only 52%.

Multivariate analysis showed that mGPS was the only independent prognostic factor for OS in soft tissue sarcoma patients (HR = 2.138; CI = 1.187–3.851). Stage IIIA (HR = 5.32; CI = 1.65–17.0) and IIIB (HR = 13.48; CI = 4.45–40.95) were the independent prognostic factor for DM. Moreover surgical margin was an independent prognostic factor for LR in our study (HR = 14.84; CI = 3.20–68.30) (Table 3).

4. Discussion

There was a significant relationship between age and DM in STS (p =

Table 2

The relationship between clinicopathological variables with distant metastasis, overall survival and local recurrence (Univariate analysis).

Characteristics	Variable	Metastasis (M)		Survival(S)		Recurrence (R)		HR			p-value		
		Yes	No	alive	death	Yes	No	M	S	R	M	S	R
Age	<20	4	7	8	3	3	8	1.95	0.304	1.158	0.046 ^a	0.551	0.952
	20–40	7	20	21	6	11	16						
	40–60	6	28	28	6	7	27						
	>0	0	8	4	4	5	3						
Tumor Size	<5 cm	1	9	8	2	2	8	0.000	1.230	0.813	0.999	0.811	0.804
	5–10 cm	5	16	16	5	9	12						
	>10 cm	11	38	37	12	15	34						
Tumor Stage	Stage II	1	9	8	2	2	8	3.22	1.444	1.375	0.000 ^a	0.667	0.655
	Stage IIIA	5	16	16	5	9	12						
	Stage IIIB	11	38	37	12	15	34						
Tumor Location	Shoulder	0	4	3	1	2	2	1.083	1.082	3.000	0.293	0.642	0.361
	Forearm	3	9	9	3	4	8						
	Hand	1	4	5	0	2	3						
	Thigh	10	27	28	9	12	25						
	Leg	1	13	11	3	6	8						
	Pelvic	0	4	3	1	0	4						
	Arm	1	1	0	2	0	2						
mGPS	Back	1	1	2	0	0	2	0.600	3.890	1.696	0.414	0.044 ^a	0.433
	mGPS 0	6	29	28	7	13	22						
	mGPS 1	8	21	23	6	9	20						
NLR	mGPS 2	3	13	10	6	4	12	0.522	1.120	1.054	0.244	0.040 ^a	0.392
	<5	11	36	38	9	19	28						
LDH	>5	6	27	23	10	7	26	1.005	1.000	1.002	0.058	0.811	0.178
	Low	11	31	34	8	15	27						
Hb	High	6	32	27	11	11	27	2.781	1.99	0.656	0.220	0.031 ^a	0.582
	Low	7	40	31	16	15	32						
	Normal	9	22	29	2	10	21						
Surgical Margin	High	1	1	1	1	1	1	2.015	1.789	3.440	0.312	0.300	0.018 ^a
	R0	44	14	46	12	15	43						
	R1	19	3	15	7	12	10						

mGPS: modified Glasgow Prognostic Score; NLR: Neutrophil Lymphocyte Ratio; LDH: Lactate Dehydrogenase; Hb: Hemoglobin; M: metastasis, S: Survival, R: recurrence.

^a Statistically significant.

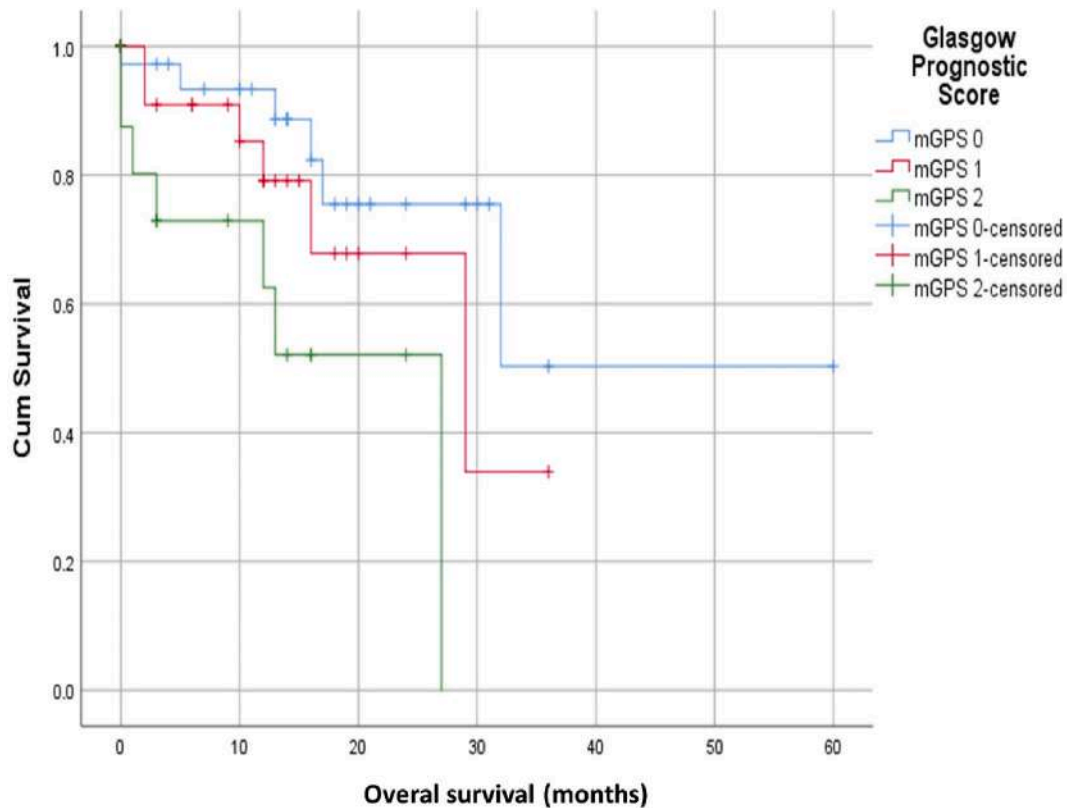


Fig. 2. The relationship between mGPS and overall survival in patients with Soft Tissue Sarcoma.

Table 3

The relationship between variables and overall survival, distant metastasis and local recurrence.

Multivariate analysis	Variable	Hazard Ratio (HR)	95% CI	P value
Overall survival	Low Hb	0.889	0.70–1.12	0.327
	High NLR	1.027	0.96–1.10	0.439
	High mGPS	2.138	1.187–3.851	0.011 ^a
Distant Metastasis	Age (Older)	1.01	0.99–1.02	0.206
	Stage IIIA	5.32	1.65–17.00	0.005 ^a
	Stage IIIB	13.48	4.45–40.95	0.000 ^a
Local Recurrence	Surgical margin R1	14.84	3.20–68.30	0.001 ^a

^a Statistically significant.

0.046, HR = 1.95). This might be due to decreasing immunological conditions in older patients with tumor, thus making it easier for tumors to spread to other locations. This result is relevant with the study of Trovik et al. where age was associated with local metastasis and recurrence [7]. Older patients have metastasis more often than younger patients. In older patient, more cell DNA are damaged [17]. Patients with old age will generally have worse outcomes because they often come with high stage tumors and less aggressive local and systemic treatment [18]. However, in this study, age was not related to STS mortality ($p = 0.551$). This is in conjunction with the study conducted by Maretty, that age had no effect on mortality from soft tissue sarcoma. The study said that age had more significant impact on LR [19].

Three previous studies before stated that an increase in NLR was significantly correlated with poor outcomes [8,20,21]. It was consistent with the results of this study which found a significant relationship between NLR values with OS ($p = 0.04$, HR = 1.129). The actual mechanism of the prognostic impact of NLR for patients with STS is still unclear. High NLR was associated with elderly patient (≥ 65 years), tumor size (> 5 cm), tumor depth, high grade, and high TNM stage (III-IV) [20]. Tumor ability to progress is not only depend on tumor's intrinsic characteristic but also on the tumor microenvironment. The high value of NLR shows an increase in neutrophil response to tumors. Neutrophil infiltration can suppress the immune activity of lymphocytes and Natural Killer cells by producing chemokines and cytokines [20]. Neutrophils also stimulate tumor angiogenesis by producing proangiogenic factors, such as growth factors, chemokines and proteases, that trigger tumor progression [22,23]. The study of Ji et al. in a mouse model showed that tumor cells secrete chemotactic cytokines, inflammatory proteins, and interleukins to attract neutrophils in tumor microenvironment. The high density of tumor tissue infiltrated with neutrophils provides a favorable environment for cancer development by removing many inflammatory mediators such as tumor necrosis factor α (TNF- α), vascular endothelial growth factor (VEGF), interleukin-2 (IL-2), interleukin-6 (IL-6), and interleukin-10 (IL-10) [24, 25]. Low lymphocyte count might reflect inadequate immune response [20]. Lymphocytes themselves have a role in the cytotoxic cells death and production of cytokines that inhibit the proliferation and migration of tumor [26,27]. NLR shows a balance between tumor pro-inflammatory and anti-tumoral immune status. An increase in NLR in malignant patients indicates greater inflammatory-tumor condition and tumor necrosis, thus giving a poor outcome [21].

Preoperative anemia has been found as a prognostic factor of poor outcome for patients with soft tissue sarcoma [13,28]. There was a significant relationship between Hb and OS ($p = 0.031$, HR = 1.99). Based on the study conducted by Szkandera et al. low hemoglobin level significantly affects patient's condition. Our study found similarity which low hemoglobin levels were more common in patients who did not survive, while the surviving patients had higher levels. Furthermore in their study, majority of anemia were found in patients with concomitant worse prognosis factor like high tumor grade, deep tumor, bigger tumor size, and older age. The cause of anemia in cancer cases

can be due to dysfunction of iron metabolism, inadequate production of erythropoetin, and inadequate response of the bone marrow to erythropoetin. Low Hb levels are also associated with poor tumor oxygenation of up to 50–60% of tumors. In advanced cases, it can show hypoxic tissue area. Hypoxia in tumors is associated with malignant development in terms of recurrence, loco-regional spread and metastasis [13,29].

Lactate dehydrogenase (LDH) is known to describe how much influence the tumor has on the body. It becomes a significant prognostic factor in several types of malignancies. LDH is released from various organs and tissues when cells are attacked by neoplasms [30]. Nevertheless, in this study, there was no significant relationship of LDH values with OS ($p = 0.332$). This could be due to the fact that not all of the tumor cells produce LDH, but only a few, so that the description of LDH levels did not have a significant relationship with mortality in patients due to tumors. This was consistent with the study by Nakamura et al. that LDH values were not related to survival in patients with soft tissue sarcomas [31].

No significant relationship was found between modality of therapy with OS, LR, and DM. This could be caused by the presence of other more determining factors such as tumor stage, age and surgical margin. The most common treatment was wide excision (25%) followed by combination of wide excision and chemotherapy (16.3%). Inoperable STS patients undergo chemotherapy and radiotherapy alone without surgery. Our inoperable patients came with a high-staged tumor in pelvis or spine with size of more than 8 cm. This was consistent according to the National Comprehensive Cancer Network (NCCN) guidelines in which unresectable STS were treated with radiotherapy, chemotherapy or regional limb therapy [32]. There were no specific modification for neo-adjuvant chemo-radiation therapy in patient with tumor identified near to bone marrow like upper thigh. The neo-adjuvant chemotherapy used in this study was Doxorubicin and Ifosfamide.

From the multivariate analysis, mGPS was the only independent factor with OS in STS patient. CRP is a marker of inflammatory processes. As the tumor growth, large amounts of inflammatory cytokines, especially interleukins-1 and -6 are produced to stimulate hepatocytes to produce more CRP. In addition to being a biomarker for inflammation, CRP also functions as an important cytokine for cellular and biological processes in host defense. Study by Nakamura in 2013 involving 332 adult patients with primary soft tissue sarcoma showed that CRP values were significantly associated with oncological outcomes and patient survival [33]. Not only do albumin levels reflect the systemic inflammatory response but also the amount of lean tissue in the host. Albumin levels also reflect the nutritional and functional status of the patient [11]. In this study, the result related to mGPS ($p = 0.011$, HR = 2.13) was in accordance with study by Maretty et al. which found the relationship between NLR, mGPS, and Aarhus Composite Biomarker Score (ACBS) with mortality. Spence et al. in their study also stated that mGPS is an easy, inexpensive, and sensitive score system for predicting outcome or mortality in STS patients [8,11,34].

The majority of patients in this study were in stage IIIB (61.3%). One-year mortality in patients with stage IIIB was the greatest with 63.15%. Thus, on multivariate analysis, STS stage was the only independent factor associated with the occurrence of DM. The higher the stage results in the higher risk for metastasis ($p = 0.005$, HR = 5.32 for IIIA; and $p = 0.00$, HR = 13.48 for stage IIIB). This result is similar to the majority of studies that staging classification of tumors is a significant prognostic factor for mortality, metastatic events and LR [35–38]. Higher stage was associated with an increase in tumor size, high histological levels based on FNCLCC grading, and the presence of nodules [39].

Patient with surgical margin R1 had significantly higher risk of LR of STS ($p = 0.001$, HR = 14.84). This was consistent with the study of Liu et al. and Stefanovski et al. which said that the surgical margin can be a predictive factor for recurrence [38,40]. If the distance of the surgical margin free from the tumor is greater, the recurrence rate will be lower. This might happen because patients with high stage have a higher risk in their surgery to not obtain the tumor-free edge of the incision. Positive

surgical margins were a strong prognostic factor of LR in patients with STS in extremities. Microscopic positive margins were associated with high LR and low disease free survival rates [41]. It is still debatable what minimum margin distance required to reduce the risk of LR of high grade STS [42]. The AJCC margin classification simply stated margins as negative (R0), microscopically positive (R1), or grossly positive (R2). A recommendation from NCCN stated that adjuvant radiotherapy was given to patients with soft tissue sarcomas with resection of less than 1 cm from the tumor since the minimum margin spacing needed to reduce the risk of LR of high-grade soft-tissue sarcoma remains undefined. Nevertheless, the last study by Cates et al. show that the Musculoskeletal Tumor Society and margin distance classifications gave more predictive value for LR of high-grade pleomorphic soft tissue sarcomas than AJCC R system. They stated that adequate margin spacing was defined as ≥ 1 mm which require adjunctive radiation therapy, whereas that of ≥ 5 mm requires no adjunctive radiation therapy [43]. Therefore, based on the results of this study, a healthy tissue on surgical margin of at least 1 mm is suggested (R0) to reduce the risk of local recurrence.

Studies on the prognostic factor of STS are still rare in developing countries with limited diagnosis and treatment modalities. Prognostic factors that have been studied in developed countries so far have not been applied in Indonesia so that this research can help to find solution for prognostic factors that are more appropriate and practical to use. However, this study has several limitations. Firstly, the sample size was not considerably large enough. Based on our observation, this might be due to low reported case of STS because of lack of public awareness to STS. Furthermore, this lack of public awareness results in patients coming to hospitals only after the tumor become unbearable, not to mention those unreported case with fatality. Secondly, this is a retrospective study with a minimum follow-up of one year. We are aware that the recurrence would occur in the first five years. Unfortunately, large number of patients failed to comply with the follow-up program. For instance, some preferred to discontinue the treatment and prefer alternative non-medical treatment. Thirdly, it is a single-center study which might be subjected to bias. To improve the outcome of the study, it is suggested to conduct a multi-center study with prospective design and larger sample size.

5. Conclusion

Modified Glasgow Prognostic Score can be used as a simple, reliable, and practical prognostic factor of OS in patients with soft tissue sarcoma (STS). The higher the AJCC stage of STS (stage III) remain the higher risk of DM in STS. Moreover, surgical margins of R0 (less than 1 mm) can be consider as margin of safety for decreasing the risk of local recurrence in soft tissue sarcoma cases.

Funding/support statement

This research did not receive any specific grant from funding agencies in the public, commercial, or not-for-profit sectors.

Provenance and peer review

Not commissioned, externally peer reviewed.

Declaration of competing interest

The authors declare no conflict of interest in this study.

Acknowledgment

None.

Appendix A. Supplementary data

Supplementary data to this article can be found online at <https://doi.org/10.1016/j.amsu.2020.07.053>.

References

- [1] V.M. Villalobos, S.D. Byfield, S.R. Ghate, O. Adejoro, About soft tissue sarcoma, *Am. Cancer Soc* (2017) 1–10.
- [2] B. Shmookler, J. Bickels, J. Jelinek, P. Sugarbaker, M. Malawer, Bone and soft-tissue sarcomas: epidemiology, radiology, pathology and fundamentals of surgical treatment, in: *Musculoskelet. Cancer Surg*, 2006, https://doi.org/10.1007/0-306-48407-2_1.
- [3] Departemen kesehatan republik Indonesia, situasi penyakit kanker, pus. Data dan inf. Dep. Kesehat. RI. <http://www.depkes.go.id/download.php?file=download/pusdatin/infodatit/infodatinkanker.pdf>, 2015 accessed January 12, 2020.
- [4] R.L. Siegel, K.D. Miller, A. Jemal, *Cancer statistics, 2020*, CA, *Cancer J. Clin.* 70 (2020) 7–30, <https://doi.org/10.3322/caac.21590>.
- [5] A.C. Society, *Survival Rates for Soft Tissue Sarcoma Survival, 2016*, pp. 1–17, https://doi.org/10.1007/978-1-4939-9900-2_1, accessed May 15, 2020.
- [6] K. Maretty-Nielsen, N. Aggerholm-Pedersen, A. Safwat, P.H. Jørgensen, B. H. Hansen, S. Baerentzen, A.B. Pedersen, J. Keller, Prognostic factors for local recurrence and mortality in adult soft tissue sarcoma of the extremities and trunk wall A cohort study of 922 consecutive patients, *Acta Orthop.* 85 (2014) 323–332, <https://doi.org/10.3109/17453674.2014.908341>.
- [7] C.S. Trovik, H.C.F. Bauer, T.A. Alvegård, H. Anderson, C. Blomqvist, Ö. Berlin, P. Gustafson, G. Sæter, A. Wallöe, Surgical margins, local recurrence and metastasis in soft tissue sarcomas: 559 surgically-treated patients from the Scandinavian Sarcoma Group Register, *Eur. J. Canc.* 36 (2000) 710–716, [https://doi.org/10.1016/S0959-8049\(99\)00287-7](https://doi.org/10.1016/S0959-8049(99)00287-7).
- [8] N. Aggerholm-Pedersen, K. Maretty-Kongstad, J. Keller, A. Safwat, Serum biomarkers as prognostic factors for metastatic sarcoma, *Clin. Oncol.* 31 (2019) 242–249, <https://doi.org/10.1016/j.clon.2019.01.011>.
- [9] D. Hanahan, R.A. Weinberg, Hallmarks of cancer: the next generation, *Cell* 144 (2011) 646–674, <https://doi.org/10.1016/j.cell.2011.02.013>.
- [10] R. Morhij, A. Mahendra, M. Jane, D.C. McMillan, The modified Glasgow prognostic score in patients undergoing surgery for bone and soft tissue sarcoma, *J. Plast. Reconstr. Aesthetic Surg.* 70 (2017) 618–624, <https://doi.org/10.1016/j.bjps.2017.01.016>.
- [11] S.C. Spence, O. Alanie, J. Ong, S. Gupta, A. Mahendra, Does the modified glasgow prognostic score aid in the management of patients undergoing surgery for a soft tissue Sarcoma? *World J. Surg. Res.* 2 (2019) 1–5.
- [12] Y. Liang, W. Xiao, Y.X. Guan, W. Wang, H.Y. Chen, C. Fang, X. Zhang, Z.W. Zhou, Prognostic value of the C-reactive protein/Albumin Ratio (CAR) in patients with operable soft tissue sarcoma, *Oncotarget* 8 (2017) 98135–98147, <https://doi.org/10.18632/oncotarget.20990>.
- [13] J. Szkandera, A. Gerger, B. Liegl-Atzwanger, M. Stotz, H. Samonigg, F. Ploner, T. Stojakovic, A. Leithner, M. Pichler, Pre-Treatment anemia is a poor prognostic factor in soft tissue sarcoma patients, *PLoS One* 9 (2014), <https://doi.org/10.1371/journal.pone.0107297>.
- [14] O.K. Idowu, Q. Ding, A.F.G. Taktak, C.R. Chandrasekar, Q. Yin, Clinical implication of pretreatment neutrophil to lymphocyte ratio in soft tissue sarcoma, *Biomarkers* 17 (2012) 539–544, <https://doi.org/10.3109/1354750X.2012.699554>.
- [15] K.R. Gundle, L. Kafchinski, S. Gupta, A.M. Griffin, B.C. Dickson, P.W. Chung, C. N. Catton, B. O'Sullivan, J.S. Wunder, P.C. Ferguson, Analysis of margin classification systems for assessing the risk of local recurrence after soft tissue sarcoma resection, *J. Clin. Oncol.* 36 (2018) 704–709, <https://doi.org/10.1200/JCO.2017.74.6941>.
- [16] R. Agha, A. Abdall-razak, E. Crossley, N. Dowlut, C. Iosifidis, F.H. Millham, D. P. Orgill, A. Noureldin, I. James, A. Alsawadi, P.J. Bradley, S. Giordano, D. M. Laskin, S. Basu, M. Johnston, O.J. Muensterer, I. Mukherjee, J.C. Ngu, M. Valmasoni, D. Pagano, B. Vasudevan, R. David, J. Anthony, J. Albrecht, J. R. Hoffman, M.A. Thorat, S. Massarut, A. Thoma, B. Kirshtein, R. Yahia, N. Farooq, B. Challacombe, P.S. Pai, B. Perakath, H. Kadioglu, J.K. Aronson, K. Raveendran, D. Machado-aranda, R. Klappenbach, D. Healy, D. Miguel, C. Rodrigues, M. H. Ather, STROCSS 2019 Guideline : strengthening the reporting of cohort studies in surgery, *Int. J. Surg.* 72 (2019) 156–165.
- [17] G. Seviour, S.Y. Lin, The DNA damage response : balancing the scale between cancer and ageing, *Aging (Albany, NY)* 2 (2010) 900–907.
- [18] A. Ferrari, I. Sultan, T.T. Huang, C. Rodriguez, M. Casanova, S.L. Spunt, Soft tissue sarcoma across the age spectrum: a population- based study from the surveillance epidemiology and end results database, *Pediatr. Blood Canc.* 57 (2011) 943–949, <https://doi.org/10.1002/psc.23252.Soft>.
- [19] K. Maretty-Nielsen, Prognostic factors in soft tissue sarcoma: population-based studies on comorbidity, biomarkers, and methodological aspects, *Dan. Med. J.* 61 (2014) 699–719.
- [20] G. Liu, L. chi Ke, S. rong Sun, Prognostic value of pretreatment neutrophil-to-lymphocyte ratio in patients with soft tissue sarcoma: a meta-analysis, *Med. (United States)* 97 (2018), <https://doi.org/10.1097/MD.0000000000002176>.
- [21] J. Szkandera, G. Absenger, B. Liegl-Atzwanger, M. Pichler, M. Stotz, H. Samonigg, M. Glehr, M. Zacherl, T. Stojakovic, A. Gerger, A. Leithner, Elevated preoperative neutrophil/lymphocyte ratio is associated with poor prognosis in soft-tissue

- sarcoma patients, *Br. J. Canc.* 108 (2013) 1677–1683, <https://doi.org/10.1038/bjc.2013.135>.
- [22] P. Shamamian, J.D. Schwartz, B.J.Z. Pocock, S. Monea, D. Whiting, S.G. Marcus, P. Mignatti, Activation of progelatinase A (MMP-2) by neutrophil elastase, cathepsin G, and proteinase-3: a role for inflammatory cells in tumor invasion and angiogenesis, *J. Cell. Physiol.* 189 (2001) 197–206, <https://doi.org/10.1002/jcp.10014>.
- [23] E. Di Carlo, G. Forni, P. Musiani, Neutrophils in the antitumoral immune response, *Chem. Immunol. Allergy* 83 (2003) 182–203, <https://doi.org/10.1159/000071561>.
- [24] E. Fang, X. Wang, J. Feng, X. Zhao, The prognostic role of glasgow prognostic score and c-reactive protein to albumin ratio for sarcoma: a system review and meta-analysis, *Dis. Markers* (2020) 2020, <https://doi.org/10.1155/2020/8736509>.
- [25] H. Ji, A.M. Houghton, T.J. Mariani, S. Perera, C.B. Kim, R. Padera, G. Tonon, K. McNamara, L.A. Marconcini, A. Hezel, N. El-Bardeesy, R.T. Bronson, D. Sugarbaker, R.S. Maser, S.D. Shapiro, K.K. Wong, K-ras activation generates an inflammatory response in lung tumors, *Oncogene* 25 (2006) 2105–2112, <https://doi.org/10.1038/sj.onc.1209237>.
- [26] A. Mantovani, P. Romero, A.K. Palucka, F.M. Marincola, Tumour immunity: effector response to tumour and role of the microenvironment, *Lancet* 371 (2008) 771–783, [https://doi.org/10.1016/S0140-6736\(08\)60241-X](https://doi.org/10.1016/S0140-6736(08)60241-X).
- [27] S.I. Grivennikov, F.R. Greten, M. Karin, S.I. Grivennikov, F.R. Greten, Karin M. Immunity, inflammation, and cancer, *Cell* 140 (2010) 883–899, <https://doi.org/10.1016/j.cell.2010.01.025>.
- [28] T. Nakamura, H. Katagiri, Y. Shido, S. Hamada, K. Yamada, A. Nagano, S. Yamada, S. Tsukushi, D. Ishimura, A. Matsumine, A. Sudo, Y. Nishida, Analysis of factors for predicting survival in soft-tissue sarcoma with metastatic disease at initial presentation, *Anticancer Res.* 37 (2017) 3137–3141, <https://doi.org/10.21873/anticancer.11671>.
- [29] P. Vaupel, A. Mayer, M. Höckel, Impact of hemoglobin levels on tumor oxygenation: the higher, the better? *Strahlenther. Onkol.* 182 (2006) 63–71, <https://doi.org/10.1007/s00066-006-1543-7>.
- [30] S. Li, Q. Yang, H. Wang, Prognostic significance of serum lactate dehydrogenase levels in Ewing's sarcoma: a meta-analysis, *Mol Clin Oncol* 5 (2016) 832–838.
- [31] T. Nakamura, K. Asanuma, T. Hagi, A. Sudo, Is serum lactate dehydrogenase useful for predicting oncological outcome in patients with soft tissue sarcoma? *Anticancer Res.* 39 (2019) 6871–6875, <https://doi.org/10.21873/anticancer.13905>.
- [32] M. Von Mehren, R.L. Randall, R.S. Benjamin, S. Boles, M.M. Bui, K.N. Ganjoo, S. George, R.J. Gonzalez, M.J. Heslin, J.M. Kane, V. Keedy, E. Kim, H. Koon, J. Mayerson, M. McCarter, S.V. McGarry, C. Meyer, Z.S. Morris, R.J. O'Donnell, A. S. Pappo, I.B. Paz, I.A. Petersen, J.D. Pfeifer, R.F. Riedel, B. Ruo, S. Schuetz, W. D. Tap, J.D. Wayne, M.A. Bergman, J.L. Scavone, Soft tissue sarcoma, version 2.2018: clinical practice guidelines in oncology, *JNCCN J. Natl. Compr. Cancer Netw.* 16 (2018) 536–563, <https://doi.org/10.6004/jnccn.2018.0025>.
- [33] T. Nakamura, A. Matsumine, T. Matsubara, K. Asanuma, A. Uchida, A. Sudo, Clinical significance of pretreatment serum C-reactive protein level in soft tissue sarcoma, *Cancer* 118 (2012) 1055–1061, <https://doi.org/10.1002/cncr.26353>.
- [34] K. Marett-Kongstad, N. Aggerholm-Pedersen, J. Keller, A. Safwat, A validated prognostic biomarker score for adult patients with nonmetastatic soft tissue sarcomas of the trunk and extremities, *Transl. Oncol.* 10 (2017) 942–948, <https://doi.org/10.1016/j.tranon.2017.09.002>.
- [35] K. Marett-Nielsen, Prognostic factors in soft tissue sarcoma, *Dan. Med. J.* 61 (2014) 1–32.
- [36] E.N. Novais, B. Demiralp, J. Alderete, M.C. Larson, P.S. Rose, F.H. Sim, Do surgical margin and local recurrence influence survival in soft tissue sarcomas? *Clin. Orthop. Relat. Res.* 468 (2010) 3003–3011, <https://doi.org/10.1007/s11999-010-1471-9>.
- [37] J. Szkandera, A. Gerger, B. Liegl-Atzwanger, G. Absenger, M. Stotz, H. Samonigg, W. Maurer-Ertl, T. Stojakovic, F. Ploner, A. Leithner, M. Pichler, Validation of the prognostic relevance of plasma C-reactive protein levels in soft-tissue sarcoma patients, *Br. J. Canc.* 109 (2013) 2316–2322, <https://doi.org/10.1038/bjc.2013.595>.
- [38] P.D. Stefanovski, E. Bidoli, A. De Paoli, A. Buonadonna, G. Boz, M. Libra, S. Morassut, C. Rossi, A. Carbone, S. Frustaci, Prognostic factors in soft tissue sarcomas: a study of 395 patients, *Eur. J. Surg. Oncol.* 28 (2002) 153–164, <https://doi.org/10.1053/ejso.2001.1242>.
- [39] E. Stoeckle, H. Gardet, J.M. Coindre, G. Kantor, F. Bonichon, Y. Milbéo, L. Thomas, A. Avril, B.N. Bui, Prospective evaluation of quality of surgery in soft tissue sarcoma, *Eur. J. Surg. Oncol.* 32 (2006) 1242–1248, <https://doi.org/10.1016/j.ejso.2006.05.005>.
- [40] C.Y. Liu, C.C. Yen, W.M. Chen, T.H. Chen, P.C.H. Chen, H.T.H. Wu, C.Y. Shiau, Y. C. Wu, C.L. Liu, C.H. Tzeng, Soft tissue sarcoma of extremities: the prognostic significance of adequate surgical margins in primary operation and reoperation after recurrence, *Ann. Surg. Oncol.* 17 (2010) 2102–2111, <https://doi.org/10.1245/s10434-010-0997-0>.
- [41] M.D. McKee, D.F. Liu, J.J. Brooks, J.F. Gibbs, D.L. Driscoll, W.G. Kraybill, The prognostic significance of margin width for extremity and trunk sarcoma, *J. Surg. Oncol.* 85 (2004) 68–76, <https://doi.org/10.1002/jso.20009>.
- [42] M. Cates, Margaret, J. Cates, Surgical resection margin classifications for high-grade pleomorphic soft tissue sarcomas of the extremity or trunk: definitions of adequate resection margins and recommendations for sampling margins from primary resection specimens, *Mod. Pathol.* 10 (2019) 1421–1433.

Dr. Adhinanda Gema Wahyudiputra, MD/Dr. Ferdiansyah:

Your study "ANALYSIS OF PROGNOSTIC FACTORS IN SOFT TISSUE SARCOMA: CANCER REGISTRY FROM A SINGLE TERTIARY HOSPITAL IN INDONESIA" has been registered in Chinese Clinical Trial Registry, it's registration number is ChiCTR2000033799, and been flagged as "Retrospective registration".

All the best,

ChiCTR team

请注意:

ResMan是基于互联网的免费公益性临床试验标准化数据管理公共平台(EDC系统)。由研究者自主设计CRF系统,可中央随机化,可供单中心、多中心研究使用;数据公开共享的时间由研究者自行决定。

凡自愿使用者,请登录网站www.medresman.org注册新用户、建立试验项目后通知我们,以便为您开放使用权;在使用中如需帮助请与我们联系。

致礼!

中国临床试验注册中心

Chinese Clinical Trial Registry