

Correlation between hasford score with early molecular response in patients with chronic myeloid leukemia in chronic phase treated with imatinib

by Ami Ashariati

Submission date: 05-Jun-2020 02:26PM (UTC+0800)

Submission ID: 1338175535

File name: onic_myeloid_leukemia_in_chronic_phase_treated_with_imatinib.pdf (323.92K)

Word count: 3227

Character count: 17723

Correlation between Hasford Score with Early Molecular Response in Patients with Chronic Myeloid Leukemia in Chronic Phase Treated with Imatinib

I. Dewa Made Widi Hersana*, Ugroseno Yudho Bintoro, Ami Ashariati and Made Putra Sedana

Hematology and Medical Oncology Division, Department of Internal Medicine, Universitas Airlangga-Dr Soetomo Teaching Hospital, Surabaya, Indonesia.

*Corresponding author E-mail: widihersana@yahoo.com

<http://dx.doi.org/10.13005/bpj/1631>

(Received: 29 January 2019; accepted: 16 March 2019)

The aim of the study is to determine correlation Hasford score and early molecular response in chronic phase BCR-ABL-Positive CML patients treated with imatinib. This is an longitudinal observational study in newly diagnosed patients of CML chronic phase BCR-ABL-Positive treated imatinib from Januari 2017 to September 2017. Patients were stratified according to Hasford score at diagnosis. Q-PCR(Quantitative RT-PCR) were used to monitor BCR-ABL transcription levels after 3 months of imatinib treatment. Correlation between Hasford score with early molecular response were analyzed using Koefisien Kontingensi's correlation test. Results: Thirty five patients were enrolled in this study consist of 13 male and 22 female. After 3 months of imatinib treatment, EMR were 5 patients (83.3%), 11 patients (61.1%) and 2 patients (18.2%) in low, intermediate, and high risk group patients, respectively. Koefisien kontingensi test showed that there was significant correlation between Hasford score and EMR ($p=0.018$; $r=0.431$). The Hasford score correlated to early molecular response in chronic phase BCR-ABL-positive CML patients received imatinib.

Keywords: Hasford score, early molecular response, imatinib, chronic phase BCR-ABL-positive CML.

Chronic myeloid leukemia (CML) is a myeloproliferative disease characterized with leukocytosis and splenomegaly, specified with the existence of Philadelphia chromosome (Ph) or BCR-ABL Gene fusion. Ph chromosome was the reciprocal translocation $t(9;22)(q34;q11)$ result, which combined the oncogene c-abl (ABL) long arm of chromosome 9 with breakpoint cluster region of long arm of chromosome 22. The resulting mRNA molecule coded by BCR_ABL gene formed a constitutive tyrosine kinase that caused extracellular transformation that lay the foundation for the appearance of CML.^{1,2}

Its incidence in the world were considered low between 10-15 cases in 1,000,000 people each year, with more male than female (ratio of male: female = 1.4:1) and often happened at the age of 40-60 years old. In western population, the median of patients' age when diagnosed was 55-65 years old. In Asia, Africa, Southern/Eastern Europe and Latin America the median of patients' age was ranging from 38 to 41 years old.³ Based on an epidemiological study in Indonesia in 2009-2011, the median age at the time of diagnosis were 34-35 years old (average 36 years old).⁴

Use of tyrosine kinase inhibitor (TKI) has affected the survival rate of newly CML



chronic phase patients to become almost the same with normal individual. Currently the works are being focused to discover how is the long term outcome of CML patients can be predicted. Low-intermediate Hasford score were being identified as a risk factor of reaching higher early molecular and cytogenetic response compared to high Hasford score.⁵

Hasford score which was developed in 1988, were used to know the risk of CML patient's progressivity. Hasford score used as prognostic factor in the pre TKI era (busulfan, interferon), but known to be beneficial as a predicting of TKI therapy response. Currently several researcher used Hasford score to predict therapy response in CML chronic phase patients that received imatinib. It was reported that no scoring system could predict the molecular response, but in the research conducted by Dybko *et al.*, (2016) in Poland toward 88 newly diagnosed of CML chronic phase patients that received Imatinib, it was reported that Hasford score were beneficial in predicting the molecular response in CML chronic phase patients.⁶ Research by Banjar and Alshobi, 2017 reported that Hasford score exceeded other score in predicting the major molecular response corresponded with risk factor identification, with 63% accuracy.⁷ Research by Kuntegowdanahalli *et al.*, (2016) reported that Hasford score had a complete cytogenetic, and major molecular response prediction, this showed the same result as a research by Yamamoto *et al.*, (2014).^{8,9} Hasford score using 6 parameters measured in diagnosis consisted of patient's age, lien size, thrombocyte count, presentation of blast, eosinophil and basophil. This score used eosinophilic and basophilic parameters in score calculation compared to Sokal score. Eosinophilic and basophilic parameter hold a crucial role in the progressivity and prognosis of CML.^{10,11,12} Hasford score classify CML patients into 3 risk groups: low, intermediate, and high risk.¹³

Therapy response a very important matter after the administration of a therapy. There are 3 therapy response criteria to evaluate the result of TKI therapy, which were hematological, cytogenetic, and molecular response. In this research evaluation toward early molecular response with quantitative PCR were conducted. Early molecular response (EMR) was recommended by NCCN in 2019 as an early molecular response evaluation. EMR was

defined as the BCR-ABL transcript rate <10% International Scale (IS) in 3 months.^{5,14,15} Research by Chikkodi *et al.*, in 124 newly diagnosed of CML chronic phase patients that received imatinib, 82.3% patient reached EMR, low-intermediate Hasford score had a higher prediction to reach EMR ($p=0,0179$). CML chronic phase patient that experience EMR had a better later therapy response.⁵ EMR were linked with the increased probability in achieving major molecular response (MMR) and molecular response in (MR^{4,5}).¹⁶ Failure of achieving EMR were linked with the low molecular response rate, increased progressivity risk and low survival compared with those who achieved EMR.¹

MATERIALS AND METHODS

This research was an analytical prospective longitudinal study. This research was conducted at hematology clinic, Internal Medicine Department, Dr Soetomo Hospital, Surabaya starting from January of 2017. The kind of data used were primary data directly collected by researcher through interview, physical examination, and blood sample collection. The diagnosis of CML was based on characteristic peripheral blood smear and was confirmed by detection of BCR/ABL translocation by PCR. The patients were newly diagnosed of CML BCR-ABL positive chronic phase that have never received imatinib. Patients aged more than 18 years, have a >60% Karnofsky appearance status, and BCR-ABL transcript rate of above 10% (IS) were included. Meanwhile patients that were pregnant, infected or inflamed, cirrhosis hepatitis or malaria, in the usage of drugs affecting leucocyte count or imatinib level, with other myeloproliferative diseases (PV, TE, MMM) were excluded. Drop out were patients that were deceased, withdrew from the research, experience decreased dosage of imatinib, progression toward acceleration phase or blast crisis, serious adverse event. To determine the correlation between Hasford score and early molecular response, Contingency Coefficient statistical test result was used. The interpretation of correlation test were based on p-value. The condition used were: an correlation status can be stated as significance if the p-value acquired were smaller than the significant value of 5% (>5%).

RESULTS

This research were participated by 41 newly diagnosed of CML chronic phase BCR-ABL patients that visited Soetomo Hospital Surabaya, which fulfill the inclusion and exclusion criteria only 35 patients, since 3 patients were deceased because of sepsis, 2 patient withdrew from the research because of a work related reason in Kalimantan and Madura, and 1 patient progressed toward acceleration phase. Clinical characteristics of CML BCR-ABL positive chronic phase patients that received imatinib (table 1).

The scale of prognostic factor of CML chronic phase BCR-ABL positive patients that received imatinib treatment were determined using

Hasford formula. Hasford score was based on the algorithm that consisted of the following parameters which were measured in diagnosis: patient's age, spleen size, thrombocyte count, presentation of eosinophil, basophil, and circulatory presentation of blast. This score differentiate patients into three groups: low, intermediate, and high (table 2).

In this study, diagnosis of CML was confirmed by quantitative PCR examination (qPCR). Early molecular response (BCR-ABL transcript rate of <10 %(IS)) CML chronic phase BCR-ABL patients were determined by measuring the BCR-ABL transcript rate after 3 months of imatinib therapy (table 3). There were 33 patients who experienced decline in transcript rate of BCR-ABL and there was 1 patient with high Hasford

29

Table 1. Characteristic of 35 patients with CML at diagnosis

Characteristic		Result
Sex	Male	13 (37.1%)
	Female	22 (62.9%)
Age (year)	Median (min-max)	41 (18-63)
Hemoglobin (g/dL)	Average \pm SD	9.41 \pm 1.6
Leucocyte (/ μ L)	Median (min-max)	212,840 (10,300 – 678,000)
Thrombocyte (/ μ L)	Average \pm SD	590,400 \pm 290,371
Eosinophil (%)	Median (min-max)	2.9 (0 -19.2)
Basophil (%)	Median (min-max)	3.14(0 – 15.5)
Blas (%)	Median (min-max)	3.7 (0 - 10)
BCR-ABL transcript rate (IS)(%)	Average \pm SD	43.18 \pm 21.33
Spleen size (cm)	Average \pm SD	16.2 \pm 8.5
Hasford	Low	6 (17.1%)
	Intermediate	18 (51.4%)
	High	11 (31.4%)

Table 2. Hasford score distribution at diagnosis

No	Hasford Score	Frequency	%
1	Low (\leq 780)	6	17.1
2	Intermediate ($>$ 780 \leq 1480)	18	51.4
3	High ($>$ 1480)	11	31.4

Table 3. Early Molecular Response Distribution

No	Early Molecular Response	Frequency	%
1	Yes (BCR-ABL<10%)	18	51.4
2	No (BCR-ABLed10%)	17	48.6

score (no.2 sample) and 1 patient with intermediate Hasford score (No. 19 sample) who experienced uplifting in BCR-ABL transcript rate after 3 months of imatinib treatment. (figure 1)

Statistical test of the difference in change of BCR-ABL transcript rate between the Hasford score groups were analyzed with Kruskal-Wallis

Table 4. Contingency Coefficient analysis result of Hasford score and Early Molecular Response

	Early Molecular Response		Correlation
	p	r	
Hasford Score	0.018	0.431	Significance

test. Statistically, there was a significant difference between the difference in change of BCR-ABL transcript rate between the Hasford score groups ($p=0.006$). To determine which group had a difference, then post hoc analysis were conducted. Post hoc analysis test for Kruskal Wallis test was Mann-Whitney test. Mann-Whitney test were conducted between the low and intermediate Hasford score, low and high Hasford score and also intermediate and high Hasford score. With Mann-Whitney test the following result were acquired:

a. Low and intermediate Hasford score group acquired $p=0.005$

b. Low and high Hasford Score group acquired $p=0.002$
 c. Intermediate and high Hasford group acquired $p=0.787$

It was concluded that there was a difference in change of BCR-ABL transcript rate between the low, intermediate, and high Hasford score groups, meanwhile between the intermediate and high Hasford score groups there was no difference in change of BCR-ABL transcript rate. It was determined that as the Hasford score risen, the lower the early molecular response (EMR) and vice versa (figure 2).

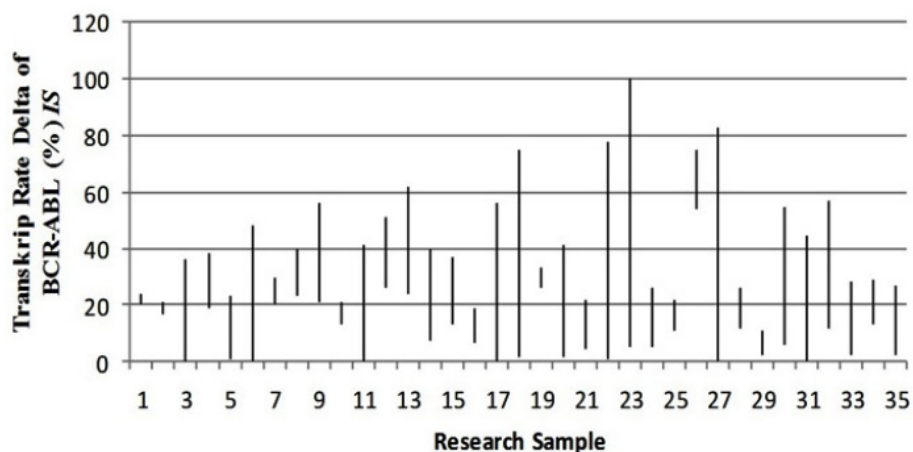
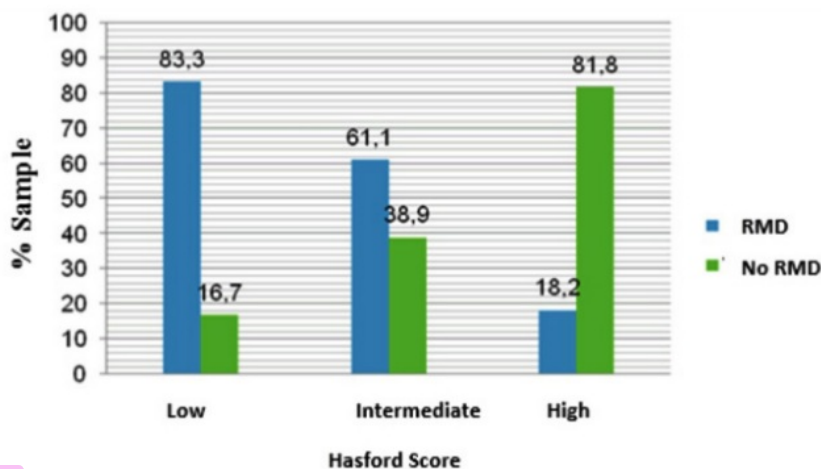


Fig.1. The difference in change BCR-ABL transcript rate before and after 3 months imatinib therapy



¹⁴ Fig. 2. Hasford score with early Molecular Response

The correlation analysis result between Hasford score with early molecular response using Contingency Coefficient correlation test acquired $p=0.018$; $r=0.413$. From those result, $p=0.018$ was acquired which showed that the correlation between Hasford score and early molecular response (table 4).

DISCUSSION

There were 17.1% of low, 51.4% intermediate, and 31.4% high Hasford score, this was different with the research conducted by Chikkodi *et al.*, where there were 29.8% low, 55% intermediate, and 15.3% high Hasford score, also with the research by Kuntegowdanahalli *et al.*, where there were 20.2% low, 62.3% intermediate and 17.5% high Hasford score in their subject patients, and also with the research by Elbedewy *et al.*, where there were 38.9% low, 49.1% intermediate and 12% high Hasford score in their subject patients.^{5,8,17}

The most of the patient provided an early molecular response (EMR) of 51.4% meanwhile the 48.6% others didn't provided a response. There were 4 patients that reached a complete molecular response (no detection of BCR-ABL rate), and 2 patient that reached major molecular response (BCR-ABL expression of d^{+1} % (IS)). This research had a different result with the research conducted by Hafstein *et al.*, where they acquired a result of 74.2% of patients reached EMR and 27.6% didn't reached EMR, statistically significant ($p<0.001$).¹⁸

In this study, there were 33 patients who experienced a decline in their BCR-ABL transcript rate and there were 2 patient that experienced an increase of BCR-ABL transcript rate after 3 months of imatinib therapy (1 patient with high Hasford score and 1 patient with intermediate Hasford score). The increase of BCR-ABL transcript rate was probably caused by mutation, cytogenetic variation or additional chromosome abnormalities.

Statistical analysis on the difference in change of BCR-ABL transcript rate between the Hasford score groups were analyzed using Kruskal-Wallis test ($p=0.006$). The post hoc analysis test for Kruskal-Wallis was Mann-Whitney. There were difference in change of BCR-ABL transcript rate between the low and intermediate Hasford score

($p=0.005$) also between low and high Hasford score groups ($p=0.002$), meanwhile between the intermediate and high Hasford score groups there were no difference in change of BCR-ABL transcript rate ($p=0.787$). This result was different with the research conducted by Asharianti & Ugroseno, 2013 which reported there was no difference in change of the BCR-ABL transcript rate between the Sokal score groups ($p=0.734$).¹⁹ Banford *et al.*, reported that in patients that didn't reached EMR in 3 months, the BCR-ABL transcript rate can become the differentiation in determining bad prognosis in the later stage. Patients with BCR-ABL halving time <76 days had significantly superior outcome compared with patients whose BCR-ABL value did not halve by 72 days.²⁰

Hasford score corelation analysis result with early molecular response by using Contingency Coefficient acquired a significant correlation with $p=0.018$; $r=0.431$ (table 4). This research had almost the same result with the research by Chikkodi *et al.*, which showed a significant correlation between Hasford score and early molecular response ($p=0.0179$). Patient with low Hasford score had the highest proportion of early molecular response (83.3%) followed by intermediate score (61.1%), and high score (18.2%). This showed that patient with lower Hasford score had higher early molecular response and vice versa. Low-intermediate Hasford score were identified as a risk factor in reaching higher EMR compared to high Hasford score.⁵

CONCLUSION

The conclusion of the study that the Hasford score correlated to early molecular response in CML chronic phase BCR-ABL positive patients that received imatinib.

ACKNOWLEDGMENT

I am grateful to my teachers, especially Ugroseno, Ami Ashariati, and Made Putra Sedana, who provide guidance in completing this paper. I also would like to express their appreciation to Department of Internal Medicine who giving the opportunity to take education in the division of hematology and medical oncology.

REFERENCES

1. Hughes TP, Saglio G, Kantarjian H, Guilhot F, Rosti G, Nakaseko C, *et al.* Early molecular response predicts outcomes in patients with chronic myeloid leukemia in chronic phase treated with frontline nilotinib or imatinib. *Blood*, **123**: 1353-1360 (2014).
2. Thielen, N., Ossenkoppele, G.J., Schuurhuis, G.J., Janssen, J.J.W.M., New Insights into the Pathogenesis of Chronic Myeloid Leukemia: Towards a Path to Cure. *The Netherlands Journal of Medicine*, **10**(69): 430-440 (2011).
3. Quintas-Cardama A, Cortes JE, Molecular biology of BCR-ABL1-positive chronic myeloid leukemia. *Blood*; **113**(8):1619-1630 (2008).
4. Reksodiputro AH, Tadjoedin H, Supardiman I, Acang N, Kar AS, Bakta M, *et al.* Epidemiology Study and Mutation Profile of Patients with Chronic Myeloid Leukemia (CML) in Indonesia. *J Blood Disorder Transfusion* **6**: 271 (2015).
5. Chikkodi SV, Malhotra P, Naseem S, Khadwal A, Prakash G, Sahu KK, *et al.* Factors affecting early molecular response in chronic myeloid leukemia. *Clinical Lymphoma Myeloma & Leukemia*, **15**: 114-119 (2015). Dybko J, Jaswiec B, Haos G, Urbaniak-Kudja D, Wrobel T, Lonc T, Sawicki M, Medras E, Kaczmar A, Kuliczowski, 2016. The Hasford score may predict molecular response in Chronic Myeloid Leukemia patients. *Hindawi Publishing Corporation*, 2016: 1-5.
6. Dybko J, Jaswiec B, Haos G, Urbaniak-Kudja D, Wrobel T, Lonc T, Sawicki M, Medras E, Kaczmar A, Kuliczowski. The Hasford score may predict molecular response in Chronic Myeloid Leukemia patients. *Hindawi Publishing Corporation*, 2016: 1-5 (2016).
7. Banjar HR and Alsobhi E, Consistency test between scoring systems for predicting outcomes of chronic myeloid leukemia in a Saudi population treated with imatinib. *International Scholarly Research Notices* 2017 (2017).
8. Kuntegowdanahalli LC, Kanakasetty GB, Thanky AH, Mailekavu SB, Lakkavalli RK, Haleshappa RA, Prognostic and predictive implication of Sokal, Euro and Eutos scores in chronic myeloid leukaemia in imatinib era-experience from a tertiary oncology centre in Southern India, *Ecaner* **10**: 679 (2016).
9. Yamamoto E, Fujisawa S, Hagihara M, Fujimaki K, Kishimoto K, Itabashi M, *et al.* European Treatment and Outcome Study score does not predict imatinib response and outcome in chronic myeloid leukemia patients. *Cancer Sci* **105**(1): 105-109 (2014).
10. Fadjar H, Sukrisman L, Leukemia Granulositik Kronis. *Buku Ajar Ilmu Penyakit Dalam*. 6th edition, Jakarta: Interna Publishing, 1209-1213 (2016).
11. Chauffaille MLLF, Reactive eosinophilia, chronic eosinophilic leukemia and idiopathic hypereosinophilic syndrome. *Rev. Bras Hematol Hemaoter* **32**(5):395-401 (2010).
12. Valent P, Horny H, Arock M, The Underestimated role of basophils in Ph⁺ CML. *Ludwig Boltzmann Cluster Oncology* (2018).
13. Hu B, Savani BN, Impact risk score calculations in choosing front-line tyrosine kinase inhibitors for patients with newly diagnosed chronic myeloid leukemia in chronic phase. *European Journal of Haematology* **93**: 179-186 (2014).
14. Harrington P, Kizilors A, Lavallade H, The role of early molecular response in management of chronic phase CML. *Current Hematology Maligna Rep*, **12**: 79-84 (2017).
15. Lapusan S, Young A, Savani BN, Mohty M, Achieving early molecular response in chronic myeloid leukemia in chronic phase to reduce the risk of progression: clinical relevance of the 3 and 6 month time points. *European Journal of Haematology* **95**: 103-112 (2014).
16. Yeung DT, Mauro MJ, Prognostic Significance of early molecular response in chronic myeloid leukemia treated with tyrosine kinase inhibitors. *American Society of Hematology*: 240-243 (2014).
17. Elbedewy TA, Elashtokhy HEA, The utility and applicability of chronic myeloid leukemia scoring systems for predicting the prognosis of Egyptian patients on imatinib. *J Leuk* **4**: 210 (2016).
18. Hafstein B, Miller MC, Hehlmann R, Erben P, Lauseker M, Early molecular and cytogenetic response in predictive for long-term progression-free and overall survival in chronic myeloid leukemia. *Leukemia*, **26**: 2096-2102 (2014).
19. Ashariati A, Ugroseno S, Profile of BCR-ABL transcript level based on Sokal Prognostic Score in Chronic Myeloid Leukemia Patients treated with Imatinib. *Acta Medica Indonesiana- The Indonesian Journal of Internal Medicine*, **45**(2):107-113 (2013).
20. Branford S, Yeung T, Parker WT, Roberts ND, Purins L, Braley JA, Prognosis for patients with CML and > 10% Bcr Abl1 after 3 months of imatinib depends on the rate of Bcr Abl1 decline. *Blood* **124**(4): 512-518 (2014).

Correlation between hasford score with early molecular response in patients with chronic myeloid leukemia in chronic phase treated with imatinib

ORIGINALITY REPORT

21%

SIMILARITY INDEX

12%

INTERNET SOURCES

15%

PUBLICATIONS

0%

STUDENT PAPERS

PRIMARY SOURCES

1

www.uop.edu.jo

Internet Source

2%

2

linknovate.com

Internet Source

1%

3

"43rd National AOMSI Conference", Journal of Maxillofacial and Oral Surgery, 2018

Publication

1%

4

Santosh V. Chikkodi, Pankaj Malhotra, Shano Naseem, Alka Khadwal et al. "Factors Affecting Early Molecular Response in Chronic Myeloid Leukemia", Clinical Lymphoma Myeloma and Leukemia, 2015

Publication

1%

5

www.esciencecentral.org

Internet Source

1%

6

www.ppjpi.unair.ac.id

Internet Source

1%

7	<p>Jarosław Dybko, Bożena Jaźwiec, Olga Haus, Donata Urbaniak-Kujda et al. "The Hasford Score May Predict Molecular Response in Chronic Myeloid Leukemia Patients: A Single Institution Experience", Disease Markers, 2016</p> <p>Publication</p>	1%
8	<p>www.scielo.br</p> <p>Internet Source</p>	1%
9	<p>Stefano Molica, Simon J Harrison. "Our panel of experts highlight the most important research articles across the spectrum of topics relevant to the field of hematologic oncology", International Journal of Hematologic Oncology, 2014</p> <p>Publication</p>	1%
10	<p>Handbook of Chronic Myeloid Leukemia, 2014.</p> <p>Publication</p>	1%
11	<p>"Small Molecules in Hematology", Springer Science and Business Media LLC, 2018</p> <p>Publication</p>	1%
12	<p>www.inaactamedica.org</p> <p>Internet Source</p>	1%
13	<p>emedicine.medscape.com</p> <p>Internet Source</p>	1%
14	<p>Somarnam Somarnam, Budi Darmawan Machsoos, Djoko Heri Hermanto.</p>	<1%

"Perbandingan Skor Sokal dan Skor Hasford terhadap Respons Terapi Imatinib Mesylate pada Pasien Leukemia Granulositik Kronis di Rumah Sakit dr. Saiful Anwar Malang", Jurnal Penyakit Dalam Indonesia, 2020

Publication

15

HUANG, Jing, WANG, Leyan, CHEN, Lu, QUN, He, YAJING, Xu, FANGPING, Chen and XIELAN, Zhao. "Kronik Miyeloid Lösemi Hastalarında Tedavinin Değiştirilmesi Avrupa Tedavi İzlem Çalışması Prognoz Skorlamasındaki Tahmin Başarısını Etkileyebilir", Türk Hematoloji Derneği, 2017.

Publication

<1%

16

biomarkerres.biomedcentral.com

Internet Source

<1%

17

Franck E. Nicolini. "Expanding Nilotinib Access in Clinical Trials (ENACT) : An open-label, multicenter study of oral nilotinib in adult patients with imatinib-resistant or imatinib-intolerant philadelphia chromosome-positive c", Cancer, 01/01/2012

Publication

<1%

18

ysmu.am

Internet Source

<1%

19

pdfs.semanticscholar.org

Internet Source

<1%

20	www.spandidos-publications.com Internet Source	<1%
21	www.frontiersin.org Internet Source	<1%
22	journals.sagepub.com Internet Source	<1%
23	pr.hec.gov.pk Internet Source	<1%
24	www2.tri-kobe.org Internet Source	<1%
25	Raihane Ben Lakhal, Hela Ghedira, Hatem Bellaaj, Yosra Ben Youssef et al. "Chronic myeloid leukemia patients in Tunisia: epidemiology and outcome in the imatinib era (a multicentric experience)", <i>Annals of Hematology</i> , 2018 Publication	<1%
26	ashpublications.org Internet Source	<1%
27	G. Etienne, S. Mathoulin-Pélissier, M. Fort, A. Guerci-Bresler et al. "A phase II open trial evaluating imatinib mesylate and zoledronic acid in patients with chronic myeloid leukemia with molecular residual disease", <i>Journal of Clinical Oncology</i> , 2008 Publication	<1%

28 Haneen R. Banjar, Enaam Alsobhi. <1%
"Consistency Test between Scoring Systems for
Predicting Outcomes of Chronic Myeloid
Leukemia in a Saudi Population Treated with
Imatinib", International Scholarly Research
Notices, 2017
Publication

29 www.scilit.net <1%
Internet Source

30 www.nejm.org <1%
Internet Source

31 Koren-Michowitz, Maya, Zehavit Buzaglo, Elena
Ribakovsky, Michaela Schwarz, Ilias Pessach,
Avichai Shimoni, Katia Beider, Ninette
Amariglio, Philipp le Coutre, and Arnon Nagler.
"OCT1 genetic variants are associated with long
term outcomes in imatinib treated chronic
myeloid leukemia patients", European Journal
Of Haematology, 2013.
Publication

32 "Neoplastic Diseases of the Blood", Springer
Science and Business Media LLC, 2018 <1%
Publication

33 www.e-sciencecentral.org <1%
Internet Source

"Jahrestagung der Deutschen, Österreichischen

34

und Schweizerischen Gesellschaften für Hämatologie und Medizinische Onkologie, Leipzig, 14.–18. Oktober 2016: Abstracts", *Oncology Research and Treatment*, 2016

Publication

<1%

35

Seung-Ah Yahng, Eun-Jung Jang, Soo-Young Choi, Sung-Eun Lee, Soo-Hyun Kim, Dong-Wook Kim. "Prognostic discrimination for early chronic phase chronic myeloid leukemia in imatinib era: comparison of Sokal, Euro, and EUTOS scores in Korean population", *International Journal of Hematology*, 2014

Publication

<1%

36

W.Y. Au, S.K. Ma, Y.L. Kwong. "The Occurrence of Philadelphia Chromosome (Ph) Negative Leukemia after Hematopoietic Stem Cell Transplantation for Ph Positive Chronic Myeloid Leukemia: Implications for Disease Monitoring and Treatment", *Leukemia & Lymphoma*, 2009

Publication

<1%

37

Ladan Nekoohesh, Shahrbanu Rostami, Mohsen Nikbakht, Saeed Mohammadi et al. "Evaluation of Molecular Response to Imatinib Mesylate Treatment in Iranian Patients With Chronic Myeloid Leukemia", *Clinical Lymphoma Myeloma and Leukemia*, 2020

Publication

<1%

Exclude quotes On

Exclude matches Off

Exclude bibliography On

Correlation between hasford score with early molecular response in patients with chronic myeloid leukemia in chronic phase treated with imatinib

GRADEMARK REPORT

FINAL GRADE

/100

GENERAL COMMENTS

Instructor

PAGE 1

PAGE 2

PAGE 3

PAGE 4

PAGE 5

PAGE 6
