



AALBORG UNIVERSITY
DENMARK

Aalborg Universitet

Analysis of the IEA 2D test. 2D, 3D, steady or unsteady airflow?

Cortes, Ines Olmedo; Nielsen, Peter V.

Publication date:
2010

Document Version
Publisher's PDF, also known as Version of record

[Link to publication from Aalborg University](#)

Citation for published version (APA):

Cortes, I. O., & Nielsen, P. V. (2010). *Analysis of the IEA 2D test. 2D, 3D, steady or unsteady airflow?* Department of Civil Engineering, Aalborg University. DCE Technical reports No. 106

General rights

Copyright and moral rights for the publications made accessible in the public portal are retained by the authors and/or other copyright owners and it is a condition of accessing publications that users recognise and abide by the legal requirements associated with these rights.

- ? Users may download and print one copy of any publication from the public portal for the purpose of private study or research.
- ? You may not further distribute the material or use it for any profit-making activity or commercial gain
- ? You may freely distribute the URL identifying the publication in the public portal ?

Take down policy

If you believe that this document breaches copyright please contact us at vbn@aub.aau.dk providing details, and we will remove access to the work immediately and investigate your claim.

Analysis of the IEA 2D test. 2D, 3D, steady or unsteady airflow?

**Inés Olmedo
Peter V. Nielsen**

Aalborg University
Department of Civil Engineering
Division of Architectural Engineering

DCE Technical Report No. 106

Analysis of the IEA 2D test. 2D, 3D, steady or unsteady airflow?

by

Inés Olmedo
Peter V. Nielsen

September 2010

© Aalborg University

Scientific Publications at the Department of Civil Engineering

Technical Reports are published for timely dissemination of research results and scientific work carried out at the Department of Civil Engineering (DCE) at Aalborg University. This medium allows publication of more detailed explanations and results than typically allowed in scientific journals.

Technical Memoranda are produced to enable the preliminary dissemination of scientific work by the personnel of the DCE where such release is deemed to be appropriate. Documents of this kind may be incomplete or temporary versions of papers—or part of continuing work. This should be kept in mind when references are given to publications of this kind.

Contract Reports are produced to report scientific work carried out under contract. Publications of this kind contain confidential matter and are reserved for the sponsors and the DCE. Therefore, Contract Reports are generally not available for public circulation.

Lecture Notes contain material produced by the lecturers at the DCE for educational purposes. This may be scientific notes, lecture books, example problems or manuals for laboratory work, or computer programs developed at the DCE.

Theses are monographs or collections of papers published to report the scientific work carried out at the DCE to obtain a degree as either PhD or Doctor of Technology. The thesis is publicly available after the defence of the degree.

Latest News is published to enable rapid communication of information about scientific work carried out at the DCE. This includes the status of research projects, developments in the laboratories, information about collaborative work and recent research results.

Published 2010 by
Aalborg University
Department of Civil Engineering
Sohngaardsholmsvej 57,
DK-9000 Aalborg, Denmark

Printed in Aalborg at Aalborg University

ISSN 1901-726X
DCE Technical Report No. 106

1. Introduction

The “IEA Annex 20 two-dimensional test case” was defined by Nielsen (1990) and was originally considered two-dimensional and steady flow [1]. However, some recent works [2, 3] considering the case as three dimensional have shown different solutions from the 2D case as well as different solutions depending on the turbulence model used in CFD simulations.

The aim of the simulations is to investigate the two dimensional or three dimensional nature of the test, as well as to analyze the results obtained considering the case as steady or unsteady.

The sizes of the Annex 20 room are specified as:

$L=9\text{m}$, $H=3\text{m}$, $W/H=1$, $h=0.168\text{ m}$, $t=0.48\text{m}$.

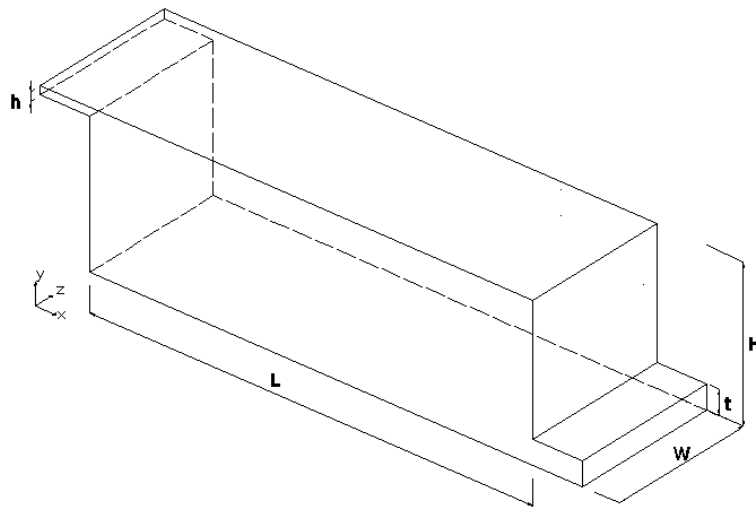


Figure 1 Sketch of the benchmark test

The air is supplied in the room by a slot inlet in the left top of the room with the velocity of 0.455 m/s which corresponds with a Reynolds number of 5000. The exhaust is situated in the right bottom.

In this study a commercial CFD program (FLUENT 6.0) was used with mesh generation from the Gambit 2.6. For the simulations, the k-epsilon turbulence model was used since it produces good quality predictions in indoor airflows.

2. Description of the simulation tests

The isothermal two-dimensional case has been solved numerically as a steady state case. The grid used for the calculation contained 3,586 control volumes.

After looking at the results obtained in the two-dimensional simulations a three-dimensional case was considered in order to study the real nature of the airflow.

The three dimensional simulations were carried out under steady and unsteady conditions. The same grid distribution as in the two-dimensional case was used in the X-Y plane, plus a 60 grid cells division in Z direction. The resulted grid is formed by 215,160 control volumes. The solutions were considered converged when the sum of absolute normalized residuals for all cells in the flow domain becomes less than 10^{-5} .

3. Results and discussion

3.1. Airflow patterns and velocity contours

Figure 2 shows the contours lines of the stream for the three tests simulated. For the three dimensional tests the stream lines are calculated at the plane $z/W=0.5$ which corresponds with the middle plane of the test room.

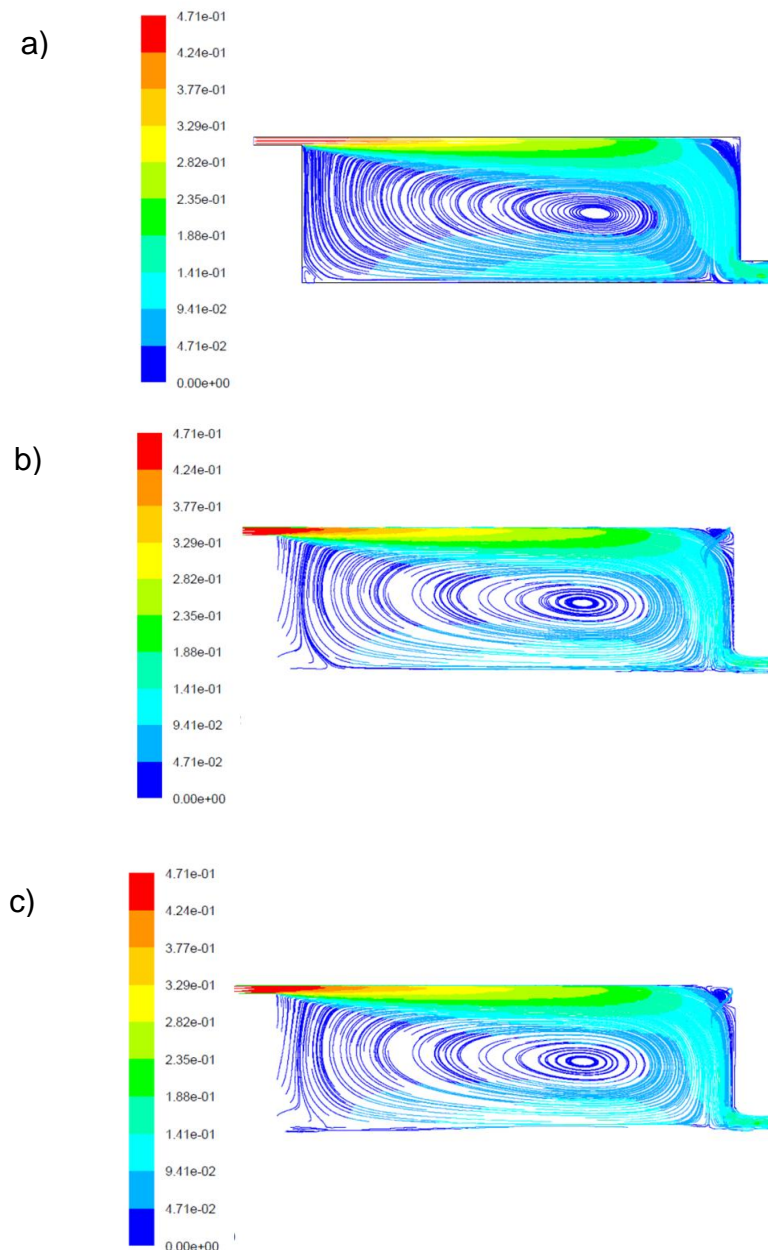


Figure 2 Streamlines calculated using the standard $k-\epsilon$ model for the plane $z/W=0.5$. a) two dimensional simulation, b) three dimensional steady simulation, c) three dimensional unsteady simulation.

For the three cases considered, the flow is completely developed in the upper part of the room where it is not possible to see larger difference between the cases. However there is an area around $x/L=1$ in the lower part of the room when the measurements show large turbulence with both positive and negative instantaneous velocities. In this area is possible to see a slight difference between the path lines in the three predictions.

The x-velocity contours are obtained at the position $y=0.028H$, in the low part of the room, in order to find any difference in the velocity distribution, see figure 3.

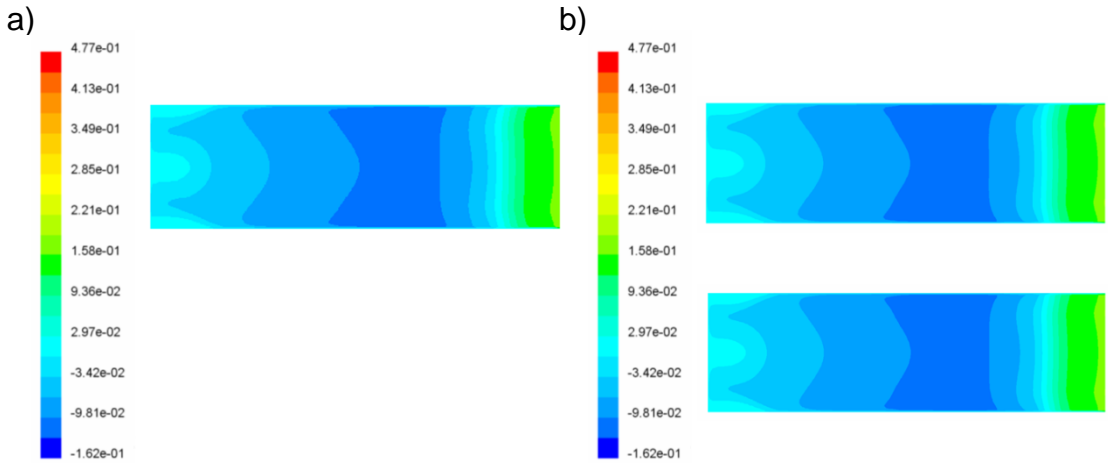


Figure 3 X-velocity contours calculated using the standard $k-\epsilon$ model for the plane $y=0.028H$. a) three dimensional steady simulation, b) three dimensional unsteady simulation at different instants of time.

As looking figure 3(b) is not possible to see any evidence that indicate an time dependent nature of the test since the velocity profiles are the same in two different instant of time. Moreover, it should be noticed that no different patterns have been observed compared to the three dimensional steady case.

3.2. Turbulent intensity

The profiles of the turbulent kinetic energy for the three cases at the position $x=H$ and $x=2H$ are shown in figure 4, where is possible to find slight differences comparing the two dimensional case to the three dimensional cases. However, the same level of turbulence is shown for the steady and unsteady three dimensional simulations.

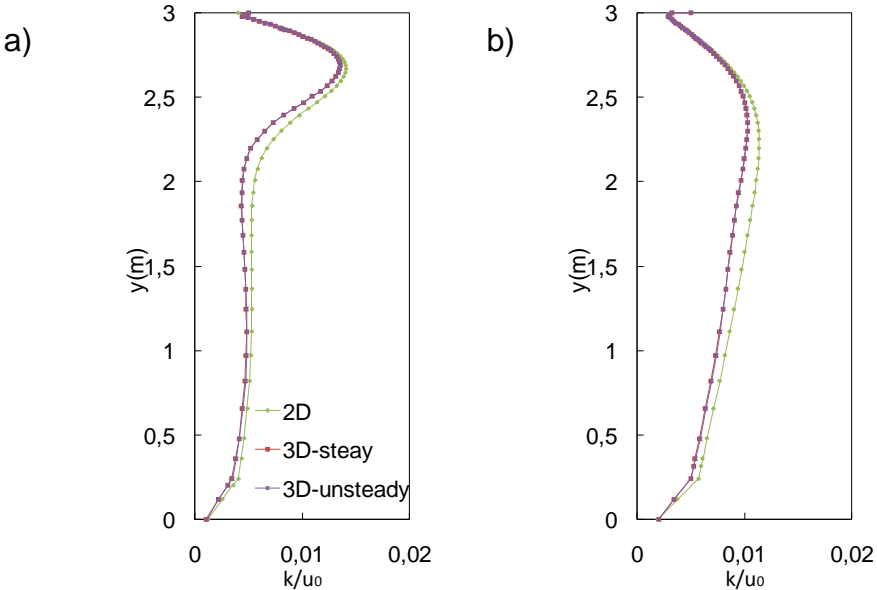


Figure 4 Dimensionless turbulent kinetic energy profiles for $x=H$ and $x=2H$.

3.3. Velocity comparison

The velocities profiles calculated with the standard $k-\epsilon$ model for four positions of the room, in the middle plane are shown in figure 5.

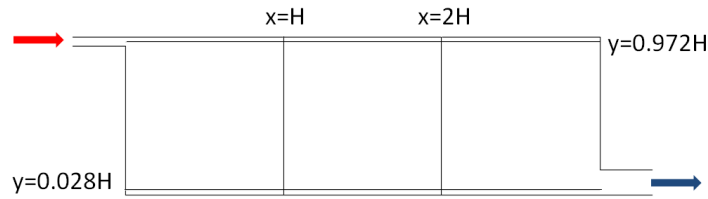


Figure 5 Sketch of the vertical and horizontal lines where the results are shown.

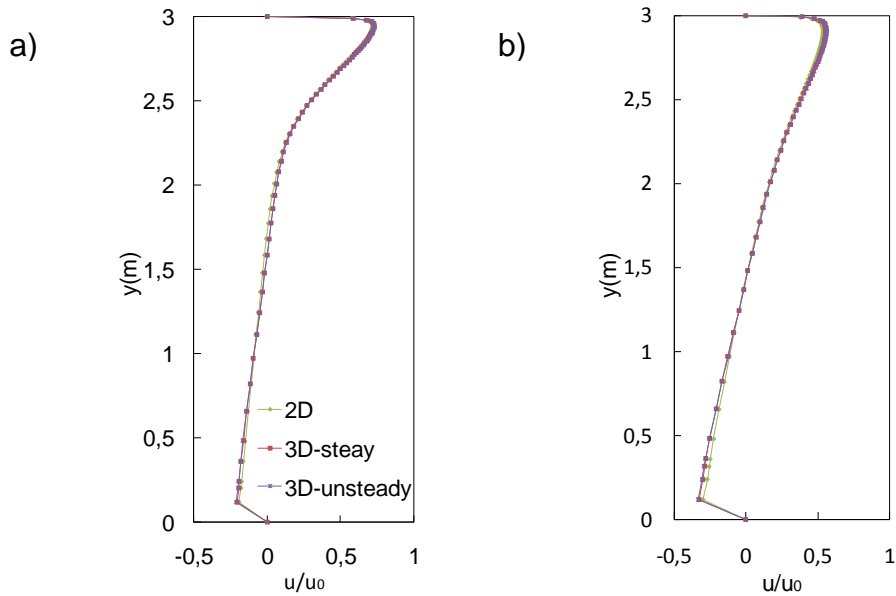


Figure 6 Dimensionless x velocity profiles predicted at a) $x=H$ and b) $x=2H$.

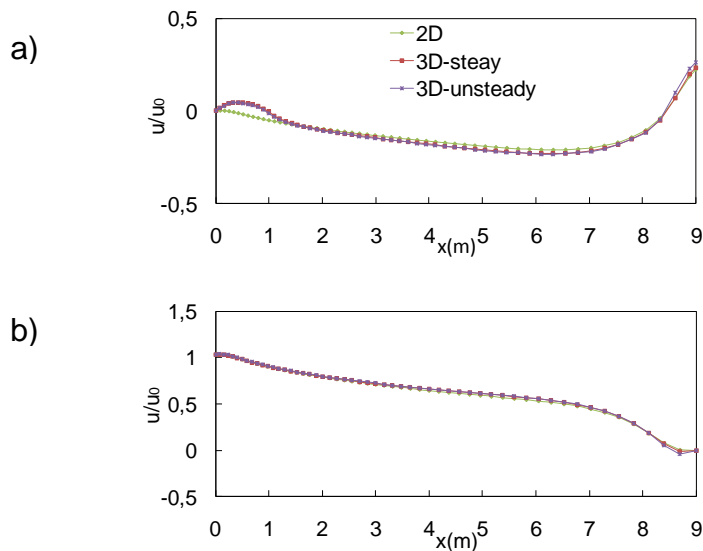


Figure 7 Dimensionless x velocity profiles predicted at a) $y=0.028H$ and b) $y=0.972H$.

4. Conclusions and suggestions

It has been shown that the IEA Annex 20 case solved with time dependent equations and k-epsilon model gives a solution similar to the solution obtained with steady state three dimensional and the two dimensional equations.

By analyzing the results of the three tests it has been observed that the streamlines are the same in the major part of the domain, which means the flow may in practice be considered two-dimensional.

Moreover, the predictions show no evidence of unsteady nature of the flow. Time dependent equations give the same solution as steady state equations.

In general the most significant differences between the cases were obtained in the level of turbulence comparing the two dimensional case to the three dimensional cases. However, the test can be considered as a steady two dimensional case in the major part of the domain since it is no possible to find huge differences with the three dimensional, steady or unsteady, cases.

5. References

- [1] www.cfd-benchmarks.com, IEA Annex 20 2D test case.
- [2] Peter V. Nielsen, Li Rong and Inés Olmedo, The IEA Annex 20 Two-Dimensional Benchmark Test for CFD Predictions, Clima 2010, Turkey, 2010.
- [3] Roberto Mathias Susin, Guilherme Anrain Lindner, Viviana Cocco Mariani and Kátia Codeiro Mendoza. (2009) Evaluating the influence of the width of inlet slot on the prediction of indoor airflow: Comparison with experimental data, *Building and Environment*, 44, 971-986.