



Aalborg Universitet

AALBORG UNIVERSITY
DENMARK

Population structure of Pacific green turtles

a new perspective from microsatellite DNA variation

Roden, Suzanne E.; Horne, John B.; Jensen, Michael P.; FitzSimmons, Nancy N.; Balazs, George H.; Farman, Richard; Cruce Horeg, Jennifer; Hapdei, Jessy; Heidemeyer, Maïke; Jones, T. Todd; Komoroske, Lisa M.; Limpus, Colin J.; Murakawa, Shawn; Piedra, Rotney; Sarti-Martínez, Laura; Summers, Tammy; Tatarata, Miri; Vélez, Elizabeth; Zárate, Patricia; Dutton, Peter H.

Published in:
Frontiers in Marine Science

DOI (link to publication from Publisher):
[10.3389/fmars.2023.1116941](https://doi.org/10.3389/fmars.2023.1116941)

Creative Commons License
CC BY 4.0

Publication date:
2023

Document Version
Publisher's PDF, also known as Version of record

[Link to publication from Aalborg University](#)

Citation for published version (APA):

Roden, S. E., Horne, J. B., Jensen, M. P., FitzSimmons, N. N., Balazs, G. H., Farman, R., Cruce Horeg, J., Hapdei, J., Heidemeyer, M., Jones, T. T., Komoroske, L. M., Limpus, C. J., Murakawa, S., Piedra, R., Sarti-Martínez, L., Summers, T., Tatarata, M., Vélez, E., Zárate, P., & Dutton, P. H. (2023). Population structure of Pacific green turtles: a new perspective from microsatellite DNA variation. *Frontiers in Marine Science*, 10, Article 1116941. <https://doi.org/10.3389/fmars.2023.1116941>

General rights

Copyright and moral rights for the publications made accessible in the public portal are retained by the authors and/or other copyright owners and it is a condition of accessing publications that users recognise and abide by the legal requirements associated with these rights.

- Users may download and print one copy of any publication from the public portal for the purpose of private study or research.
- You may not further distribute the material or use it for any profit-making activity or commercial gain
- You may freely distribute the URL identifying the publication in the public portal -



OPEN ACCESS

EDITED BY

David M. P. Jacoby,
Lancaster University, United Kingdom

REVIEWED BY

Kevin Feldheim,
Field Museum of Natural History,
United States
Carlos Carreras,
University of Barcelona, Spain

*CORRESPONDENCE

Suzanne E. Roden
✉ suzanne.roden@noaa.gov

RECEIVED 06 December 2022

ACCEPTED 09 May 2023

PUBLISHED 03 July 2023

CITATION

Roden SE, Horne JB, Jensen MP, FitzSimmons NN, Balazs GH, Farman R, Cruce Horeg J, Hapdei J, Heidemeyer M, Jones TT, Komoroske LM, Limpus CJ, Murakawa S, Piedra R, Sarti-Martínez L, Summers T, Tatarata M, Vélez E, Zárate P and Dutton PH (2023) Population structure of Pacific green turtles: a new perspective from microsatellite DNA variation. *Front. Mar. Sci.* 10:1116941. doi: 10.3389/fmars.2023.1116941

COPYRIGHT

© 2023 At least a portion of this work is authored by John B. Horne, Suzanne E. Roden, T. Todd Jones, Shawn Murakawa, and Peter H. Dutton on behalf of the U.S. Government and as regards Dr. Horne, Ms. Roden, Dr. Jones, Ms. Murakawa, and Dr. Dutton and the U.S. Government, is not subject to copyright protection in the United States. This is an open-access article distributed under the terms of the [Creative Commons Attribution License \(CC BY\)](https://creativecommons.org/licenses/by/4.0/). The use, distribution or reproduction in other forums is permitted, provided the original author(s) and the copyright owner(s) are credited and that the original publication in this journal is cited, in accordance with accepted academic practice. No use, distribution or reproduction is permitted which does not comply with these terms.

Population structure of Pacific green turtles: a new perspective from microsatellite DNA variation

Suzanne E. Roden^{1*}, John B. Horne², Michael P. Jensen³, Nancy N. FitzSimmons⁴, George H. Balazs⁵, Richard Farman⁶, Jennifer Cruce Horeg⁷, Jessy Hapdei⁸, Maike Heidemeyer⁹, T. Todd Jones¹⁰, Lisa M. Komoroske¹¹, Colin J. Limpus¹², Shawn Murakawa¹⁰, Rotney Piedra¹³, Laura Sarti-Martínez¹⁴, Tammy Summers¹⁵, Miri Tatarata¹⁶, Elizabeth Vélez¹⁷, Patricia Zárate¹⁸ and Peter H. Dutton¹

¹Marine Mammal and Turtle Division, Southwest Fisheries Science Center, National Marine Fisheries Service, National Oceanic and Atmospheric Administration, La Jolla, CA, United States, ²National Research Council affiliated with Marine Mammal and Turtle Division, Southwest Fisheries Science Center, National Marine Fisheries Service, National Oceanic and Atmospheric Administration, La Jolla, CA, United States, ³Department of Chemistry and Bioscience, Aalborg University, Aalborg, Denmark, ⁴Australian Rivers Institute, Griffith University, Nathan, QLD, Australia, ⁵Golden Honu Services of Oceania, Honolulu, HI, United States, ⁶Laboratory of Marine Biology and Ecology, Aquarium des Lagons, Nouméa, New Caledonia, ⁷Environmental Planning & Conservation Department, Naval Facilities Engineering Systems Command (NAVFAC) Marianas, Santa Rita, GU, United States, ⁸Jessy's Tag Services, Saipan, Commonwealth of the Northern Mariana Islands, United States, ⁹Escuelade Biología, Centro de Investigación en Biología Celular y Molecular, Centro de Investigación en Ciencias del Mar y Limnología (CIMAR), Universidad de Costa Rica, San Pedro, Costa Rica, ¹⁰Pacific Islands Fisheries Science Center, National Oceanic and Atmospheric Administration, Honolulu, HI, United States, ¹¹Department of Environmental Conservation, University of Massachusetts, Amherst, MA, United States, ¹²Queensland Department of Environment and Science, Brisbane, QLD, Australia, ¹³Sistema Nacional de Áreas de Conservación (SINAC), Nicoya, Guanacaste, Costa Rica, ¹⁴Dirección General de Conservación, Comisión Nacional de Áreas Naturales Protegidas (CONANP), Mexico City, Mexico, ¹⁵Midway Atoll National Wildlife Refuge, U.S Fish and Wildlife Service (USFWS), Honolulu, HI, United States, ¹⁶Direction de l'Environnement (DIREN), Papeete, Tahiti, French Polynesia, ¹⁷Asociación Kuemar, San José, Costa Rica, ¹⁸Departamento de Oceanografía y Medio Ambiente, Instituto de Fomento Pesquero, Valparaíso, Chile

This study builds upon the current understanding of green turtle population genetic structure in the Pacific that has largely been based on mitochondrial DNA (mtDNA), by examining nuclear DNA (nDNA) diversity, regional connectivity, and male-mediated gene flow. A total of 1,111 nesting green turtle samples were analyzed with 10 microsatellite markers from 20 Pacific rookeries. Population differentiation (F_{ST}) was significant ($p < 0.05$) in all but 8 of 190 pairwise rookery comparisons. Pairwise F_{ST} values and discriminant analysis of principal components (DAPC) revealed a defined East-West split consistent with mtDNA studies. Additionally, isolation-by-distance was evaluated with estimated effective migration surfaces (EEMS). The data indicated structure throughout the Pacific rookeries largely in agreement with stock structure defined by mtDNA studies, except for some areas on the Central American and Australian continental shelves, providing evidence of possible male-mediated gene flow. The series of analyses performed did indicate that male-mediated gene flow has likely occurred where breeding migration corridors of separate populations overlap with courtship areas. This may occur primarily along the margins of continents, including along Mexico and Central America in the East Pacific. Our

study provides an ocean-wide baseline nDNA dataset for green turtle rookeries in the Pacific and reexamines the current thinking regarding the role of male turtles in the population dynamics of management units (MU) and to what extent nuclear gene flow occurs among designated MUs.

KEYWORDS

Chelonia mydas, nuclear markers, population genetics, male-mediated gene flow, conservation units, stock structure

Introduction

The green turtle (*Chelonia mydas*) is a highly migratory marine megaherbivore with a circumtropical species distribution but the global population has been substantially reduced from historic levels (Jackson, 2001). As a species, it has responded well to conservation protection in many instances (Broderick et al., 2006; Chaloupka and Balazs, 2007; Chaloupka et al., 2008; Valdivia et al., 2019), but multiple potential anthropogenic threats including pollution, incidental fishery bycatch, unregulated harvesting, and climate change still pose challenges for long-term persistence (Witherington et al., 2006; Wallace et al., 2011). All green turtle populations worldwide are presently listed as either Endangered or Threatened under the US Endangered Species Act (Seminoff et al., 2015) and the IUCN Red List of Threatened Species (Seminoff, 2004).

Due to complex life histories, involving early developmental oceanic phases and breeding migrations by adults (Seminoff et al., 2008; Dutton et al., 2019; Mettler et al., 2019; Shimada et al., 2020; Ferreira et al., 2021), green turtle ecology plays out on a broad geographic scale. Outside of the breeding season, population boundaries may overlap across large sections of the ocean as turtles from different breeding populations share foraging areas (Naro-Maciel et al., 2014). Conservation efforts, therefore, need to extend across international marine jurisdictions and require multinational coordination (Riskas et al., 2016).

Analysis of genetic markers provides a way to determine the population structure of wild animals (Allendorf, 2017; Larson et al., 2017). Various processes that act on genetic variation can differentiate populations into biologically meaningful units, and an important component of conservation and management is to identify and delineate the appropriate population units to conserve. However, the power to detect genetic structure can vary between different genetic markers and result in a lack of concordance, especially between mitochondrial (mt) DNA markers and nuclear (n) DNA markers (Toews and Brelsford, 2012; Teske et al., 2018).

As a molecular marker, mtDNA is useful for sea turtles because it is maternally inherited and captures signals of natal homing (Bowen and Karl, 2007). Mature female green turtles exhibit fidelity to both foraging and nesting habitats and show strong philopatry to natal nesting beaches/regions (Limpus et al., 1992; FitzSimmons et al., 1997a; Shimada et al., 2020). As such, mtDNA has been extensively used to identify different levels of conservation units, from evolutionarily significant units (ESUs) to discrete population

segments (DPSs) and management units (MUs) (Moritz, 1994; Komoroske et al., 2017). More than three decades of population genetic studies using mtDNA have led to a good understanding of mtDNA stock structure of the major populations for all marine turtle species (Dutton et al., 1999; Dutton et al., 2013; Shamblin et al., 2014; Komoroske et al., 2017; Jensen et al., 2019; FitzSimmons et al., 2020). A total of 11 Distinct Population Segments (DPS) worldwide have been identified for *C. mydas*, under the US Endangered Species Act, based largely on mtDNA data (Seminoff et al., 2015). These are similar to the Regional Management Units (RMUs) delineated in Wallace et al. (2010). These DPS and RMU designations often include several smaller Management Units (MU) (genetic stocks) defined by mtDNA haplotype data (Moritz, 1994), as RMUs attempt to encompass the distribution of individuals across foraging and migratory habitats that may overlap in certain regions (Wallace et al., 2010).

The mitochondrial phylogeny of *C. mydas* populations across the Pacific Ocean displays a large genetic barrier between the West and Central/East Pacific rookeries with the Central/East Pacific populations all grouping within the same monophyletic clade (Jensen et al., 2019). The East Pacific clade is supported by unique morphological characteristics that were historically recognized as *C. mydas agassizii* (Álvarez-Varas et al., 2021). However, mtDNA frequently lacks resolving power due to a slow rate of nucleotide substitution (Avice et al., 1992) combined with the occurrence of shared control region haplotypes among rookeries (Komoroske et al., 2017). More recently, the use of additional Single Nucleotide Polymorphisms (SNPs) from whole mitogenome sequencing and short tandem repeats (mtSTR) with high mutation rates has helped improve the resolution of green turtle population structure (Frey et al., in prep; Tikochinski et al., 2012; Shamblin et al., 2015; Tikochinski et al., 2018; Shamblin et al., 2020; Karaman et al., 2022). However, exclusive use of these maternally linked mtDNA markers incompletely represent population connectivity by not accounting for male-mediated genetic patterns (FitzSimmons and Limpus, 2014; Komoroske et al., 2017). Therefore, the addition of nuclear DNA (nDNA) data allows inference of patterns that are biparentally determined to increase the resolution in population structure, including site fidelity and rookery connectivity.

Population genetic studies of green turtles using nDNA markers, such as microsatellite loci or SNPs, have been smaller in scope, regionally focused or have relied on relatively sparse sampling designs than those using mtDNA (FitzSimmons et al., 1995; FitzSimmons et al., 1997b; Rodén et al., 2013; Bradshaw et al., 2018; Hamabata

et al., 2020). Moreover, nDNA microsatellite results are often not congruent across studies and therefore are not fully comparable to larger and more geographically comprehensive mtDNA datasets for this species (e.g. Jensen et al., 2019). The absence of this type of broad-scale data potentially skews our perception of green turtle population patterns and means that the conservation action plans, which draw heavily on the mtDNA perspective to define the appropriate conservation units, could be improved. The purpose of this study was to create a nDNA population genetic dataset for Pacific green turtles that may be compared to the latest mtDNA findings (Jensen et al., 2019). To accomplish this we built on the previously published data of Rodén et al. (2013), which used a suite of nDNA (microsatellites and SNPs) to assess population structure among five major Pacific green turtle rookeries. In the present study, we extend the microsatellite data to 20 green turtle rookeries scattered across the Pacific and bordering the Indian Ocean. These new pan-Pacific microsatellite data allow us to identify the extent of concordance between mtDNA and nDNA diversity at an ocean-basin scale, revise our understanding of population genetic structure, and may be used as a baseline for a number of macroecology and conservation genetic applications (Horne et al. 2023).

Materials and methods

Sampling and DNA extraction

A total of 1,111 turtle blood or tissue samples were collected from 20 *Chelonia mydas* rookeries located across the East, Central,

and West Pacific (Figure 1, Table 1, Supplementary Table 1). Here, a rookery (or deme) generally includes one or more beach nesting sites that are in close geographic proximity (<50 km) and are likely to be used by females from the same breeding population with a shared demographic history. Tagging studies show that females often nest on multiple nearby beaches (Alvarado and Figueroa, 1991; Dethmers et al., 2006; Fonseca et al., 2018) and this supported combining some adjacent nesting beaches into rookery units (Dutton et al., 2014b; Jensen et al., 2019) (Supplementary Table 1).

Samples, including some previously used in FitzSimmons et al. (1997a; 1997b); Dethmers et al. (2006); Rodén et al. (2013), and Dutton et al. (2014a; 2014b) were collected between 1989 and 2017 from nesting females and dead hatchlings. Samples were preserved in 70% ethanol, a NaCl saturated 20% DMSO solution, or saturated NaCl solution as outlined in Dutton (1996). All samples were archived, stored (-20°C), processed, and analyzed at the Southwest Fisheries Science Center in La Jolla, California. Genomic DNA was extracted from tissues using multiple methods appropriate to tissue type, storage method, and condition (FitzSimmons et al., 1997b; Rodén et al., 2013; Dutton et al., 2014b).

Microsatellite amplification

All samples in the study were genotyped using polymerase chain reaction (PCR) with ten microsatellite loci characterized in Dutton and Frey (2009); Frey et al. (2013), and Rodén et al. (2013). Loci included A6, B108, B116, C102, D1, D108, D115, D2, D102,

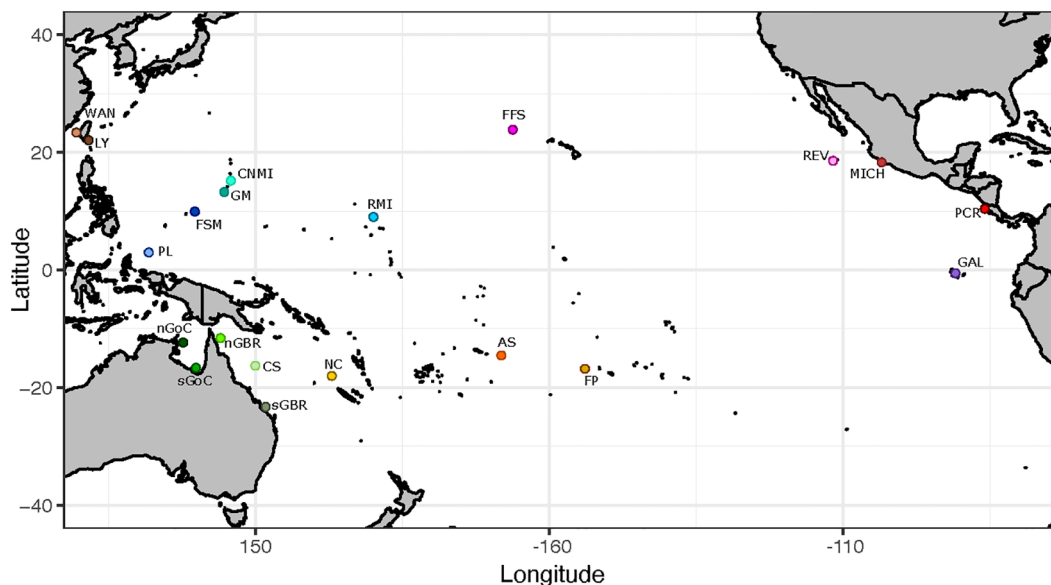


FIGURE 1

Map of rookery sites/sampling locations: WAN, Wan-An; Taiwan; LY, Lanyu; Taiwan; CNMI, Commonwealth of the Northern Mariana Islands; GM, Guam; FSM, Federated States of Micronesia; RMI, Republic of the Marshall Islands; PL, Palau; nGoC, northern Gulf of Carpentaria (Arnhemland); sGoC, southern Gulf of Carpentaria (Bountiful Island); nGBR, Great Barrier Reef; Australia (Bramble Cay; Raine Is); sGBR, Great Barrier Reef; Australia (Lady Musgrave Is; Heron Is; Northwest Is); CS, Coral Sea; NC, New Caledonia; AS, American Samoa; FP, French Polynesia; FFS, French Frigate Shoals; Hawaii; REV, Isla Revillagigedo; Mexico; MICH, Colola; Michoacán; Mexico; PCR, Pacific Costa Rica; Guanacaste (Nombre de Jesus; Isla San Jose; Playa Colorada); GAL, Galapagos Islands; Ecuador.

TABLE 1 Green turtle rookery sites and associated statistics across ten genomic microsatellite loci: sample collection location (rookery), rookery abbreviation, MtDNA management Unit (MU), number of samples genotyped (n), observed heterozygosity (H_O), within-population heterozygosity (H_S), global fixation index G_{IS} (within -population inbreeding coefficient), p-values indicating the significance of departure from Hardy-Weinberg Equilibrium (HWE), percent missing data (%NA), and effective number of alleles (A_E).

Rookery	Abbreviation	MU	n	H_O	H_S	G_{IS}	HWE	%NA	A_E
Costa Rica (Pacific)	PCR	NW Costa Rica/Nicaragua	134	0.661	0.734	0.100	0.001	6.6	5.924
Michoacan, Mexico	MICH	Pacific Mexico	68	0.705	0.750	0.060	0.002	12.0	5.816
Isla Revillagigedo, Mexico	REV	Isla Revillagigedo	76	0.682	0.737	0.075	0.001	5.1	5.547
Galapagos Islands, Ecuador	GAL	Ecuador	85	0.706	0.763	0.075	0.001	6.8	5.828
French Frigate Shoals, Hawaii	FFS	French Frigate Shoals	96	0.670	0.710	0.055	0.003	6.7	4.477
Commonwealth of the Northern Mariana Islands	CNMI	CNMI & Guam	32	0.692	0.693	0.003	0.476	7.4	4.046
Guam	GM	CNMI & Guam	15	0.665	0.656	-0.014	0.429	15.4	4.129
Republic of the Marshall Islands	RMI	Marshall Islands	104	0.728	0.777	0.063	0.001	4.2	6.091
Palau	PL	Palau	33	0.719	0.772	0.069	0.006	11.1	5.715
Federated States of Micronesia	FSM	Micronesia	81	0.679	0.737	0.078	0.001	4.0	5.488
American Samoa	AS	American Samoa	93	0.707	0.749	0.056	0.002	15.3	5.809
French Polynesia	FP	French Polynesia	12	0.705	0.768	0.082	0.080	11.1	4.638
Wan-An Island, Taiwan	WAN	W Taiwan	44	0.673	0.729	0.076	0.001	8.4	5.327
Lanyu, Taiwan	LY	E Taiwan	30	0.763	0.763	0.001	0.503	8.8	5.184
Gulf of Carpentaria (north), Australia	nGoC	Gulf of Carpentaria	9	0.670	0.698	0.041	0.201	9.9	4.463
Gulf of Carpentaria (south), Australia	sGoC	Gulf of Carpentaria	22	0.739	0.794	0.069	0.018	10.0	5.789
Northern Great Barrier Reef, Australia	nGBR	nGBR	59	0.701	0.815	0.140	0.001	17.9	7.413
Southern Great Barrier Reef, Australia	sGBR	sGBR	20	0.658	0.806	0.184	0.001	19.0	6.074
New Caledonia	NC	western New Caledonia	33	0.704	0.789	0.107	0.001	11.9	6.083
Coringa-Herald NWR, Coral Sea, Australia	CS	Coral Sea	18	0.795	0.753	-0.056	0.149	20.0	4.892

See [Supplementary Table 1](#) for additional rookery details.

and D107 and each forward primer was labeled with one fluorescent tag, HEX or FAM. Microsatellite loci were amplified using approximately 2-15 ng template DNA and reaction conditions outlined in [Dutton and Frey \(2009\)](#) with the following adjustments: 0.1 mM each dNTP, 0.2 mg/ml bovine serum albumin (BSA), and 0.06 U/ μ l Taq DNA polymerase.

All PCR products, including positive and negative controls, were checked for amplification using 2% agarose gels with ethidium bromide staining ([Sambrook et al., 1989](#)). Amplified products were diluted and pooled in pairs of two loci per capillary (B116/D2, D115/C102, D107/D1, D108/D102, A6/B108). Pairs were chosen to avoid overlapping size ranges and genotyped with an ABI Prism 3730 DNA Analyzer using a ROX 500 fluorescent size standard (ABI, USA) and accompanying GeneMapper software v4.0 (Applied Biosystems) (see [Supplementary Table 2](#) for genotype data). To facilitate consistency and normalization of allele sizes, standard reference samples with known genotypes were included within each PCR reaction plate to serve as positive controls. Approximately 20% of all samples were PCR amplified multiple times to replicate genotypes and assess the genotyping error rate across the microsatellite loci.

Data analysis

Genetic variation and diversity

Possible duplicate samples were identified using StrataG ([Archer et al., 2017](#)) as samples sharing >90% of their genotype profiles, and removed if determined to be true duplicates. Samples with >30% missing data across 10 loci were also removed. To assess whether any of the loci were affected by PCR artifacts, we used Micro-Checker ([Van Oosterhout et al., 2004](#)) combined with the null.all() function of the PopGenReport R-package ([Brookfield, 1996](#)) to test for potential null alleles and allelic dropout. In addition, adjusted genotypes were generated in Micro-Checker for a locus with signs of a null allele to evaluate any influence on population structure analysis results. The number of missing genotype calls were also tested for correlation with the number of homozygous genotypes per rookery for each locus. If the relationship between missing data and homozygotes was positive and statistically significant, this was considered evidence of genotyping errors caused by null alleles or large allele dropout ([Wang et al., 2012](#); [Dharmarajan et al., 2013](#)). The variation of G_{IS} and G_{ST} was plotted to test for correlation in order to look for

evidence that Wahlund effects or null alleles might be the cause of heterozygote deficiencies (Waples, 2015; De Meeûs, 2018). Genetic diversity estimates (number of alleles, observed heterozygosity, unbiased expected heterozygosity, allelic richness, effective number of alleles A_e , and fixation indices) were calculated in GenoDive v.3.0 (Meirmans, 2020). Tests for linkage disequilibrium (LD) and deviation from Hardy-Weinberg equilibrium (HWE) were performed in both Genepop v.4.7.0 (Rousset, 2008) and GenoDive v.3.0 to produce a comprehensive set of results. HWE results were reported after adjusting for multiple tests using a 95% confidence threshold and a Benjamini and Hochberg (1995) correction.

The program POWSIM v.4.0 (Ryman and Palm, 2006) was used to evaluate the statistical power of our microsatellite assay to detect genetic differentiation at various levels of F_{ST} for different sample sizes. This analysis simulates sampling from a specified number of populations that have reached predefined levels of divergence and estimates the probability of false negatives for population differentiation at the expected degree of divergence (Ryman et al., 2006). Genetic drift to F_{ST} levels of 0.001, 0.0025, 0.005, 0.01, 0.02, 0.03, and 0.04 was simulated using an effective population size (N_e) of 5,000 and varying the number of generations (t) accordingly (Ryman et al., 2006). The statistical power of our 10 microsatellite loci was assessed to determine their effectiveness in detecting differentiation across all rookeries, based on sample sizes of 10, 20, 50, 70, and 100 individuals. Analysis was repeated for regional subsets of 5 populations in the North Central and East Pacific, and 15 populations in the Western and South Pacific. Power is expressed as the proportion of significant outcomes (1,000 replicates, rejecting the null hypothesis (H_0) of no allele frequency difference, or $F_{ST} = 0$ at $p < 0.05$).

Population structure

Tests for population differentiation with pairwise comparisons using several statistical divergence metrics including F_{ST} fixation index (Weir and Cockerham, 1984), F'_{ST} (Meirmans and Hedrick, 2011), G'_{ST} (Hedrick, 2005), G''_{ST} (Meirmans and Hedrick, 2011) and Jost's D allelic differentiation measure (Jost, 2008) were performed in the R package StrataG v.2.1 (Archer et al., 2017) with strata schemes ranging from broad to fine scale. All pairwise comparison p -values were calculated using 10,000 permutations. Pairwise F_{ST} significance tests were reported after a Benjamini and Hochberg false-discovery rate correction (Benjamini and Hochberg, 1995). Furthermore, pairwise F_{ST} results that indicated a lack of significant differentiation were used to group some collection sites in close proximity into a single stratum.

Pairwise F_{ST} values were plotted on two axes after a principal coordinate analysis ordination (PCoA) in the R package APE v. 5.0 (Paradis and Schliep, 2019) to visualize emergent spatial patterns. Discriminant analysis of principal components (DAPC) was performed with the R package Adegenet v. 2.1.3 (Jombart and Ahmed, 2011) to explore spatial genetic patterns among rookeries. DAPC first transforms the data into uncorrelated principal components and then uses linear discriminant analysis to give the best differentiation of populations. Effectively, the analysis minimizes within population genetic variation while maximizing

between population variation to visually represent the population structure in multivariate space. DAPC also provides a useful comparison to other estimates of population structure, as it does not assume LD or HWE and can be used to assess biases introduced by violations of these assumptions in other analyses. Loading values from DAPC were also used to deconstruct which loci contributed the most to the conserved variance on each discriminant analysis eigenvalue.

The relationship between genetic variation and geographic distance was explored using the program EEMS (Petkova et al., 2016). This analysis calculates the squared genetic differences across all markers (dissimilarity) between individually georeferenced genotypes and identifies areas that deviate from a linear isolation-by-distance (IBD) null model. Further, it divides the genetic variation into among-deme (rookery) and within-deme dissimilarity and interpolates them geographically to assess population connectivity (m) and genetic diversity (q) gradients, respectively. Custom migration matrices were given as input to test varying connectivity scenarios, from one-dimensional stepping-stone models to a full island model where all rookeries are allowed to directly exchange migrants with each other. The best migration matrix was chosen based on the fit between the observed and expected dissimilarity values and consistency with other population genetic analyses. Each analysis was run for 10 million iterations, discarding the first 3 million as burn-in and sampled from the MCMC using a thinning interval of 3,000. Analyses were run multiple times with different starting seeds to ensure random sampling, and the convergence of the MCMC was determined by visually assessing trace plots of log likelihoods.

Results

Genetic diversity

Genotypes were generated for 1,111 individuals (representing 20 rookeries) across 10 microsatellite loci. After QC tests to remove potential duplicates and samples with greater than 30% missing genotype data, 1,064 samples were analyzed. No signs of linkage disequilibrium were detected in the data. The overall genetic diversity per locus ranged from 3–24 alleles, with 1.60 to 8.78 effective alleles (Table 2) with an average genotyping error rate of 0.02 across all loci. The observed heterozygosity among populations ranged from 0.658 to 0.795 (Table 1). Four loci (D108, D1, B116, C102) showed signs of heterozygote deficiency and consequently departed from HWE (Table 2). D108 deviated significantly from HWE in 16 of 20 rookeries, D1 in 7, B116 in 7, and C102 in 4 out of 20 rookeries ($p < 0.05$; see Supplementary Table 3). Significant heterozygote deficits were estimated across loci in 14 out of the 20 rookeries (Table 1). Microchecker results indicated that null alleles may be present in 15 of the rookeries for D108, and to a lesser extent for D1 (seven), B116 (four) and C102 (four) and null.all() produced similar results, with D108 the primary locus with potential null alleles. There was no evidence of large allelic dropout at any loci across all rookeries. G_{IS} values in the four affected loci were all positive (Table 2) indicating heterozygote deficiencies, but G_{IS} was

TABLE 2 Summary statistics for each of ten genomic microsatellite loci across all Pacific green turtle rookeries used in this study (individual locus-by-population permutations are detailed in Supplementary Table 3).

Locus	Alleles	H _O	G _{IS}	G _{ST}	G' _{ST} (Hed)	D _{EST}	HWE	%NA	A _R	A _E
A6	14	0.83	-0.01	0.05	0.32	0.28	0.289	19.4	0.016	5.03
B108	8	0.63	-0.01	0.10	0.27	0.19	0.332	3.9	0.008	2.58
B116	8	0.53	0.14	0.07	0.18	0.12	0.001	6.4	0.008	2.53
C102	24	0.56	0.17	0.17	0.54	0.44	0.001	9.1	0.025	2.93
D1	16	0.81	0.05	0.03	0.20	0.18	0.001	2.8	0.015	6.32
D102	3	0.39	-0.02	0.03	0.05	0.02	0.252	1.2	0.003	1.6
D107	22	0.89	0.02	0.02	0.24	0.23	0.121	11.0	0.023	8.54
D108	20	0.63	0.28	0.03	0.28	0.26	0.001	11.2	0.021	6.74
D115	22	0.90	0.01	0.02	0.21	0.20	0.241	7.8	0.022	8.78
D2	16	0.84	-0.01	0.07	0.47	0.43	0.350	6.8	0.016	5.59

Columns indicate: locus name, number of genetic variants (alleles), variant diversity (observed heterozygosity H_O), global fixation indices across all populations (G_{IS}, G_{ST}, G'_{ST}), Jost's D estimator of allelic differentiation (D_{EST}), p-values indicating the significance of departure from Hardy-Weinberg Equilibrium across all populations (HWE), percent missing data (%NA), allelic richness (A_R), and effective number of alleles (A_E). Global tests take into account populations, and therefore population structure and indicate the goodness-of-fit of all locus-by-population permutations to expectations (see Supplementary Table 3).

not correlated with G_{ST} making HWE departures due to Wahlund effects unlikely (Waples, 2015). Null alleles were not likely to be driving heterozygote deficits, since the number of homozygotes was not correlated with missing data in any locus (Pearson's $r = -0.08 - 0.39$, $p = 0.08 - 0.86$) (Wang et al., 2012; Dharmarajan et al., 2013; Dąbrowski et al., 2015) and since G_{IS} was not correlated with G_{ST} (De Meeüs, 2018). In order to further evaluate whether artifacts introduced by null alleles, especially in D108, might affect the results of standard population structure analysis, we conducted pairwise F_{ST} tests with and without the potentially problematic loci, as well as D108 allele frequencies adjusted for null alleles (see below).

Population structure

F'_{ST} and G''_{ST} based on the full 10 loci yielded results that were similar to standard F_{ST}, but Jost's D estimator sometimes indicated a lack of differentiation between rookeries where that would be unlikely, such as between Lanyu, Taiwan and Pacific Costa Rica (see Supplementary Table 4), which was inconsistent with other results. All but eight of 190 pairwise rookery comparisons indicated significant differentiation based on pairwise F_{ST} tests ($p < 0.05$; Figure 2, see Supplementary Table 4). Insignificant pairwise structuring was mostly found in the Southwest Pacific along the continental shelf of eastern Australia, or involved rookeries with sample sizes < 20 (Figure 2). Furthermore, population structure between the eastern and western Pacific was clear, as seen in the PCoA ordinations of pairwise F_{ST} values (Figure 3).

Pairwise F_{ST} results based on nine loci (excluding the most potentially problematic locus, D108), yielded a similar outcome with regard to the pairwise comparisons that were not significantly different with 10 loci. However, with D108 removed, PCR and MICH as well as CS and sGBR were no longer significantly differentiated (Supplementary Table 5). When all 10 loci were included with allele

frequencies for D108 adjusted for null alleles, the only difference was significant differentiation between nGoC and sGoC with the adjusted D108 dataset (Supplementary Table 6). Removal of all four potentially problematic loci (D108, B116, C102, and D1) resulted in further lack of significant differentiation between several populations in the West and Central Pacific. The broad geographic patterns of structure were still evident with the six loci dataset, as well as most of the finer scale patterns within the East Pacific (Supplementary Figure 2). In sum, while some loci displayed deviations from expectations, extensive exploration and testing of the data supported retaining every locus for subsequent analysis in order to optimize the ability to detect any finer scale structure that might exist.

Results of the POWSIM analysis for all 10 loci showed that the power to detect weak structure (F_{ST} = 0.001) was poor with sample sizes < 50 , but better for F_{ST} < 0.0025 with $n > 10$ (see Supplementary Figure 1A). Power was robust for detecting weak structure (F_{ST} = 0.0025) with sample sizes > 50 within the Central North and East Pacific (see Supplementary Figure 1B), and with sample sizes > 20 in the Western and South Pacific (see Supplementary Figure 1C).

All DAPC results retained 100 principal components as predictors for discriminant analysis, and 98-99% of the conserved variance. The broad scale pattern for the DAPC analysis was consistent with pairwise population structure (Figures 2, 3), showing three distinct clusters for East, Central, and West Pacific rookeries (Figure 4A), and also reflected much the same spatial patterns within the East Pacific (Figure 4C), Northwest Pacific (Figure 4D), and Southcentral/Southwest Pacific (Figure 4B) as the pairwise results.

The most information-rich locus in the microsatellite panel based on the DAPC loading values was C102, which was also the most polymorphic locus, having 24 alleles (Table 2). With the exception of the Southwest Pacific, C102 alleles exhibited the highest loading values in all of our DAPC analyses, underscoring the value of retaining this locus (Pearman et al., 2022). In the broad-scale analysis, a single C102 allele accounted for 14% of the genetic

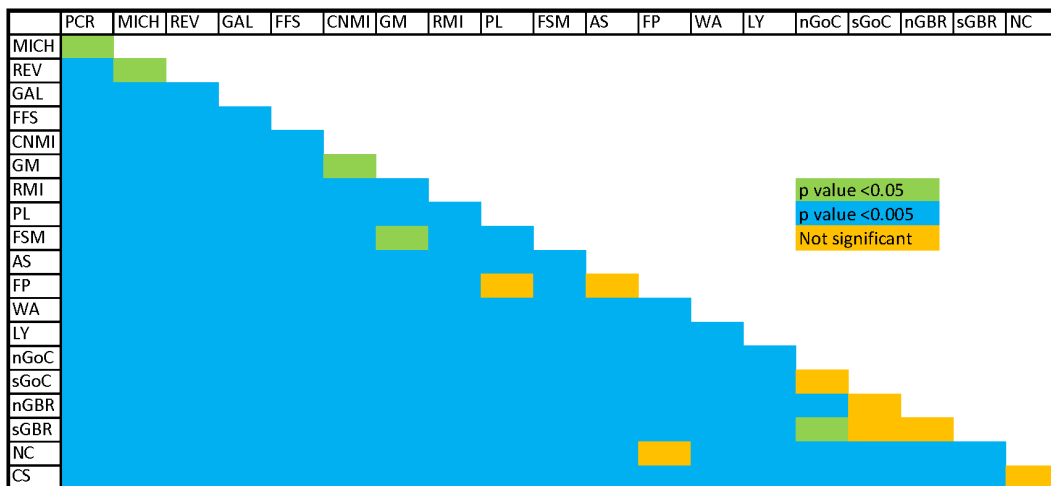


FIGURE 2

Results of pairwise F_{ST} tests (10 loci) (Blue, $p < 0.005$; green, $p < 0.05$; orange, $p > 0.05$) PCR, Guanacaste, Costa Rica; MICH, Playa Colola, Michoacán, Mexico; REV, Islas Revillagigedo, Mexico; GAL, Galapagos Islands, Ecuador; FFS, French Frigate Shoals, Hawaii, USA; CNMI, Commonwealth of the Northern Mariana Islands, USA; GM, Guam, USA; RMI, Republic of the Marshall Islands; PL, Palau; WAN, Wan-an Island, Taiwan; LY, Lanyu Island, Taiwan; FSM, Federated States of Micronesia; AS, American Samoa, USA; FP, French Polynesia; nGoC, northern Gulf of Carpentaria, Northern Territory, Australia; sGoC, southern Gulf of Carpentaria, Queensland Australia; CS, Coral Sea Islands, Australia; sGBR, Southern Great Barrier Reef, Australia; nGBR, Northern Great Barrier Reef, Australia; NC, New Caledonia.

variance between the East and West Pacific (axis 1, Figure 4A). Another C102 allele accounted for approximately 17% of the variance on axis 2 of the same plot, differentiating Hawaii from the rest of the Pacific (Figure 4A). The least important locus in terms of loading values appeared to be D102, which was also the least polymorphic, with only three alleles. Summing the variance contributions from all alleles for each locus revealed a positive and

roughly linear relationship between loading values and the total number of alleles for all DAPC analyses (data not shown) suggesting that the informativeness of each locus was associated with allelic diversity.

EEMS analyses were performed on three subsets of the data (Northwest Pacific, Southwest Pacific, and East Pacific; Figures 5A–C, 6A–C, respectively), corresponding to the subsets used for DAPC, because the relationship between genetic dissimilarity and geographic distance was not uniform across regions. The East Pacific rookeries had the most IBD-like dissimilarity interpolations and the best migration matrix was a circular, one-dimensional stepping-stone model (Figure 5C). The coastal distance between MICH and PCR was a relatively good predictor of genetic dissimilarity between these two continental-shelf rookeries, which appear more similar to each other than to the oceanic islands of the East Pacific (Figure 5C). The most genetically diverse rookery in this region was GAL (Figure 6C). This diversity is the amount of genetic dissimilarity observed between individuals within rookeries, and not an expression of heterozygosity or the number of effective alleles, which did not identify this higher level of diversity (Table 1).

In the West Pacific, geographic distance was a poor predictor of genetic dissimilarity between rookeries, above and below the equator (Figures 5A, B). In the Northwest Pacific, the migration matrix that produced the best results was a full island model. In the Southwest Pacific the best matrix was a nearly full island model, but the model fit was slightly better when AS and FP weren't directly connected to the Australian continental-shelf rookeries. The Australian rookeries had the highest within-deme (rookery) genetic dissimilarity (e.g. diversity) in the entire Pacific (Figure 6B). Coincidentally, Australian rookeries (CS, nGBR, sGBR) also had the highest genetic dissimilarity between demes (Figure 5B), suggesting that genetic distance increased more than geographic distance among these rookeries.

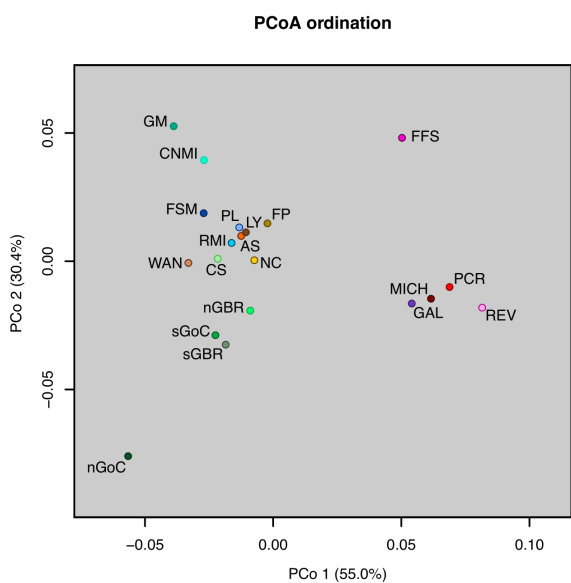


FIGURE 3

Principal Coordinates Analysis (PCoA) plot of pairwise F_{ST} values for 20 Pacific rookeries. The percentage of variation explained by each PCoA axis is given in parentheses. Objects ordinated closer to one another are more similar than those ordinated further away. Rookery codes follow those defined in Table 1.

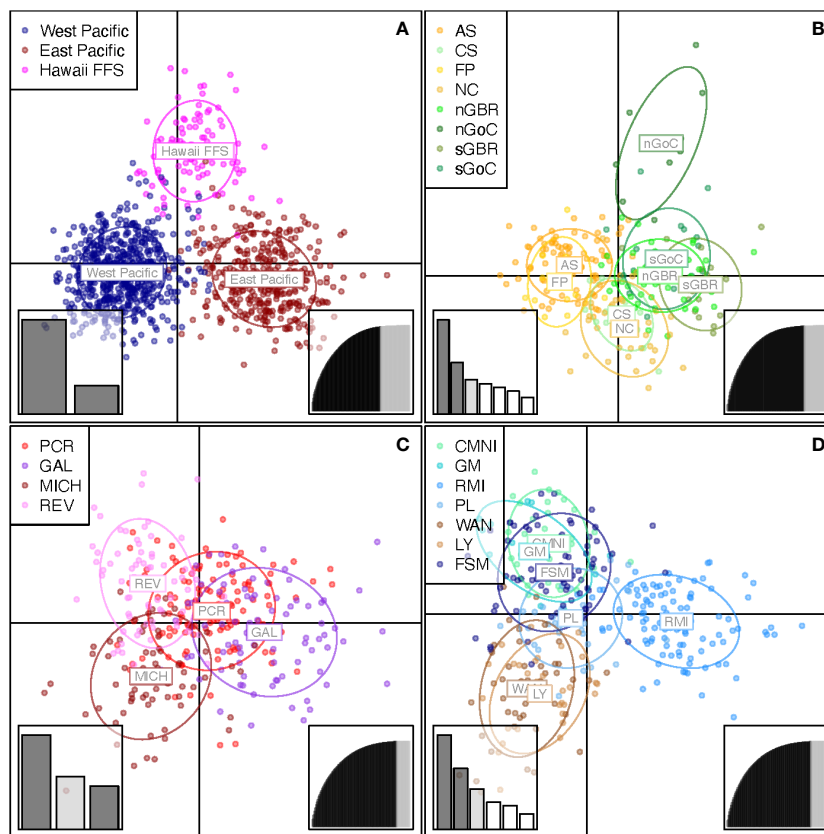


FIGURE 4
(A–D) DAPC scatter plots of green turtle genotypes: **(A)** all samples (top left), **(B)** southwest Pacific (top right), **(C)** eastern Pacific (bottom left), **(D)** northwest Pacific (bottom right). The number of discriminant analysis eigenvectors used for plotting is shown in the lower left-hand insert. Number of PCA eigenvalues retained as predictors for linear discriminant analysis and the proportion of the conserved genetic variation (x- and y-axes respectively) are shown in the lower right-hand insert. Rookery codes follow those defined in [Table 1](#).

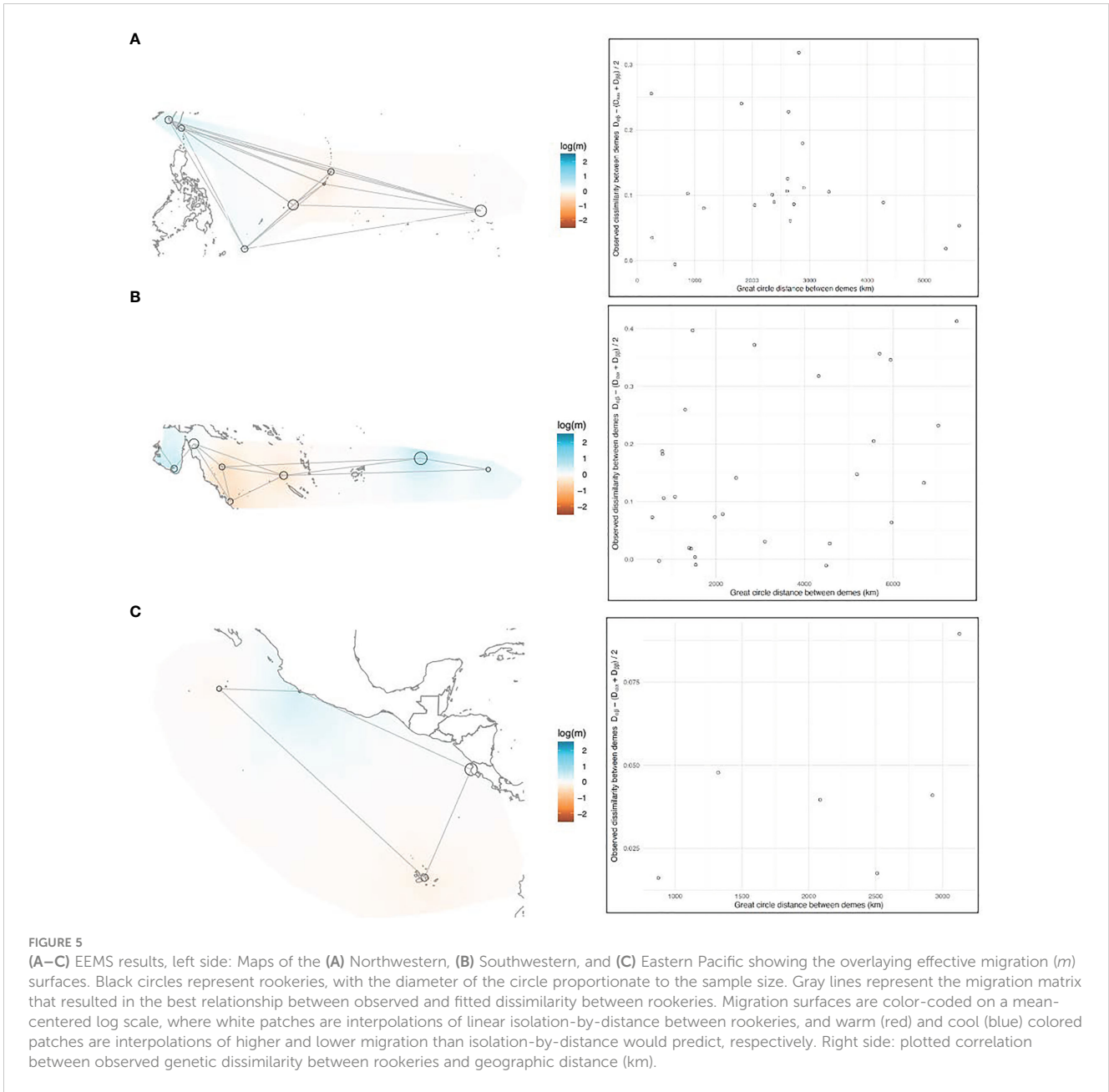
Discussion

Population structure

Our microsatellite dataset for Pacific green turtles achieved an ocean-basin scale nDNA population analysis for an endangered marine species and showed meaningful genetic structure at regional and population-level spatial scales. The microsatellite genotypes used herein were produced from many of the same tissue and DNA extractions as the mtDNA analysis of [Jensen et al. \(2019\)](#), making the two studies highly comparable and complementary. On the whole, the nDNA corroborated population patterns recovered from mtDNA, with the strongest feature of both datasets being a deep genetic partition between the East and West Pacific. The genetically intermediate Hawaiian rookery was also more related to the East Pacific in the nDNA as observed with mtDNA ([Dutton et al., 2014a](#); [Jensen et al., 2019](#); [Hamabata et al., 2020](#)). Additionally, nDNA segregated most rookeries from each other ([Figure 2](#)), demonstrating that it too captures a natal homing signal, similar to mitochondrial genetic structure. Examples include the Northwest and Central Pacific, where most rookeries indicated significant population differentiation. This finding dispels the notion that widespread male-mediated gene flow occurs and reinforces the

existence of natal homing, at least on a regional level, by males. Our results from the EEMS analysis indicating elevated within-deme (rookery) diversity in the Australian rookeries compared to the East Pacific are not surprising considering past mtDNA studies that identified the Southwest Pacific as a diversity hotspot for mtDNA. Central American rookeries display a shallower demographic history, which reflects a relatively recent recolonization of the East Pacific from Hawaii ([Dutton et al., 2014a](#)). At the same time, Australian turtle populations have much deeper lineages given that the West Pacific has sustained green turtles for much longer than the East Pacific ([Jensen et al., 2019](#)).

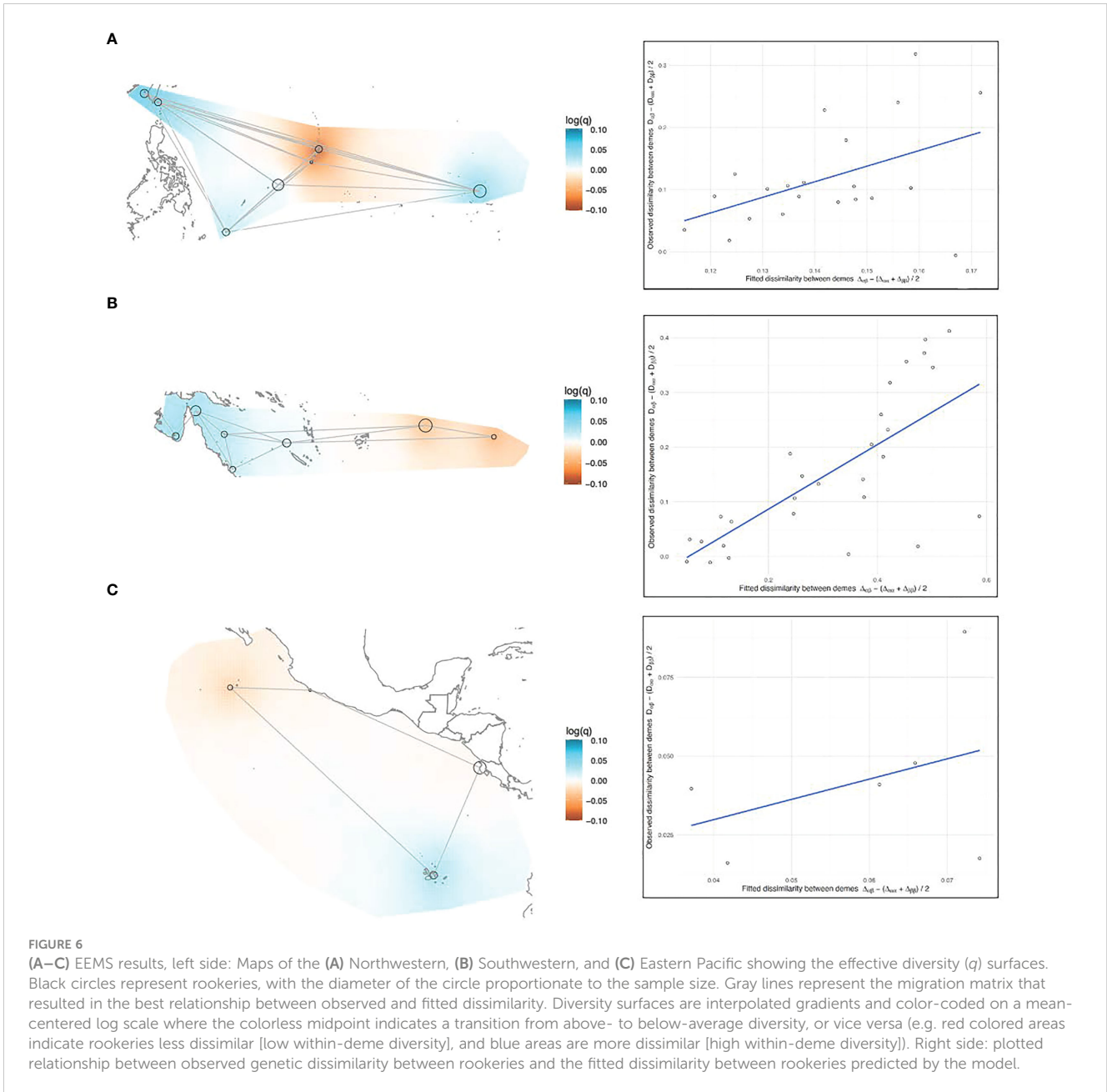
While the East and Central North Pacific (Hawaii) rookeries were extensively sampled, coverage in the Central, South and West Pacific was less comprehensive and included some rookeries with relatively small sample sizes. The French Polynesia rookery, for example, had only 12 samples and this may not have been adequate for detecting the level of population structure between it and Palau, American Samoa, and New Caledonia. POWSIM results indicate that our current assay is poor at detecting weak differentiation with sample sizes < 20, and a lack of structure between some minimally sampled rookeries and others could be due to a lack of power. Considering that the insularity of most sea turtle breeding



populations is consistently confirmed by genetic analysis, instances where pairwise genetic structure is lacking, and the sample size is small, results should be interpreted cautiously.

Nevertheless, results of the EEMS analysis when considered together with results of the pairwise tests, provide insights that allow a more nuanced interpretation of the population structure analysis results by themselves for the under-sampled Australian rookeries. The fixation indices and DAPC results showed the nGBR and sGBR as genetically similar, and the CS rookery as differentiated from the nGBR and sGBR (Figures 2, 4B), and yet the EEMS results showed that all these three rookeries (CS, nGBR, sGBR) had the highest genetic dissimilarity between demes (Figure 5B), suggesting that genetic distance increased more than geographic distance among these rookeries, a scenario more consistent with discontinuity rather than homogeneity. Samples from the sGBR and CS were

few ($n = 20$ and $n = 18$, respectively) and these small sample sizes might not adequately characterize the elevated genetic diversity that the EEMS analysis revealed for the Australian rookeries (Figure 6B). If so, then the genetic dissimilarity between these rookeries may more or less reflect the dissimilarity within them, making it difficult to delineate population boundaries. Analyses such as DAPC combine the within- and among-deme genetic variation into the same plot, and intentionally minimize within-deme variation to better represent population structure visually. EEMS analysis separates these two different variance components instead and presents them individually in continuous geographic space trying to interpolate, rather than discriminate, the boundary between defined populations. Therefore, when comparing DAPC and EEMS results it is important to consider the different ways these analyses handle the same genetic variation.



Heterozygote deficiencies in some individual loci, and in global tests including all loci in several of the sampled rookeries, are most likely features of green turtle populations that have been subjected to a number of disruptive processes, and not the result of genotyping errors. For instance, local extirpation and recolonization, driven partly by Pleistocene sea-level disturbances to nesting beaches (Dethmers et al., 2006), could have led to more genetic drift than expected under stable conditions and HWE (Dutton et al., 2014a; Horne, 2014). In addition, recent human activities that have negatively impacted green turtles (Seminoff et al., 2015) may have eroded genetic diversity even in rookeries that remain relatively large, or reduced populations to the point where they are too small, or too inbred, to obtain a truly random sample (Dharmarajan et al., 2013). Nevertheless, the idea that genetic drift is the strongest signal in our data is supported by the

fact that pairwise F_{ST} values (and analogs) tended to be more geographically intuitive than pairwise Jost's D , which estimates connectivity based on the sharing of alleles rather than fixation (Jost et al., 2018). Moreover, fixation indices are sensitive to all causes of genetic drift, such as founder effects, population bottlenecks, as well as infrequent migration (Whitlock, 2011). Lastly, the use of DAPC, a method that does not assume HWE, recovered the same general population patterns as the fixation indices.

Overall, the nDNA population patterns are in agreement with previous mtDNA studies, with a few noteworthy exceptions. The first was a signal of genetic differentiation found between CNMI and Guam that has not been previously detected using mtDNA control region sequences (Dutton et al., 2014b). However recent whole mitochondrial genome sequencing has provided greater resolution to assess green turtle population structure and shows

evidence of highly significant genetic differentiation between CNMI and Guam (Frey et al., in prep) in agreement with this study. This signal of differentiation is surprising due to the proximity of Guam and CNMI and may be the result of genetic drift due to small population size or a founder effect similar to the findings in the Hawaiian Islands by Frey et al. (2013). Guam and CNMI are both very small nesting populations with less than 50 females estimated in each (Seminoff et al., 2015). It is also noteworthy that the foraging populations around CNMI and Guam consist of mostly juveniles, with adults tending to be observed around the nesting season (Martin et al., 2016; Summers et al., 2017; Gaos et al., 2020). The significant differentiation that we found between Guam and CNMI with nDNA data suggests that males (presumably homing to their natal beaches) are likely to be mating with nesting females that are reproductively receptive during the breeding season in the vicinity of the nesting beaches, rather than in mixed courtship areas, thus limiting the opportunity for male-mediated gene flow (Frey et al., in prep).

Male-mediated gene flow

Within the East Pacific, a greater degree of connectivity was found among Central American and continental Mexican rookeries in comparison to previous mtDNA population studies. With nDNA microsatellites, we found evidence for greater connectivity between the mainland rookeries of Costa Rica and Mexico than with the island rookeries of the Galapagos and Revillagigedo. This is interesting given that telemetry and tag recaptures show green turtles from Galapagos rookeries sharing foraging grounds in Central and South America with those from Mexico and Costa Rica (Seminoff et al., 2008; Hart et al., 2015). The genetic dissimilarity of Galapagos turtles could be partly explained by differences in migration routes between males and females that nest on the continent vs. those that nest on oceanic islands. If continental green turtles maintain coastal migratory behaviors (Blanco et al., 2012; Hart et al., 2015), then Mexican and Costa Rican turtles could be using overlapping migratory pathways along the coastal shelf when moving between nesting and foraging areas, and may opportunistically interbreed where migratory pathways intersect with courtship areas when the turtles become reproductively active in these areas just prior to the nesting season. This opportunistic mating is likely driven by the behavior of migrating males given that they are reproductively active for longer periods than the females, which tend to be reproductively receptive for shorter durations at the breeding sites (Ulrich and Parkes, 1978; Crowell Comuzzie and Owens, 1990; Limpus, 1993; Owens, 1997). Furthermore, green turtle mating activity generally decreases once nesting seasons begin but in Michoacán, mating persists into the nesting season (Alvarado and Figueroa, 1991; Delgado-Trejo and Alvarado-Figueroa, 2012). In contrast, Galapagos green turtles that forage in continental shelf waters would not migrate along the same coastal routes. Instead, they would head offshore toward the high seas, where they would be less likely to have chance mating encounters (Seminoff et al., 2008). Given the great distances involved (necessitating longer migration

times), it is also unlikely that Galapagos turtles would be reproductively active or encounter reproductively receptive females before they depart continental foraging grounds to start breeding migrations. The same would be true for Islas Revillagigedo green turtles that forage throughout the Baja Peninsula and Southern California, USA (Juarez-Ceron et al., 2003; Dutton et al., 2019). Additionally, lenient natal homing has been found to be more prevalent in continental nesters returning to nesting sites along continuous coastlines than for nesters homing to isolated insular coastlines (Levasseur et al., 2019; Shamblin et al., 2020), where the former may share or have very similar features, such as magnetic fields used as a cue to identify the magnetic signature of a natal beach (Brothers and Lohmann, 2018).

Conversely, the lack of nDNA structure between the three Australian breeding regions of nGBR, sGBR and sGoC (Figures 2, 4B) was somewhat unexpected because these three regions have nearly fixed mitochondrial control region differences and the phylogeographic affinity between the GoC and Indian Ocean rookeries evident in mtDNA lineages (Dethmers et al., 2006; Jensen et al., 2019). Previous work comparing nuclear and mtDNA saw significant genetic differentiation for both markers across all three nesting populations, except for nDNA between the nGBR and sGBR (FitzSimmons et al., 1997b), suggesting that male-mediated gene flow acts to homogenize these two populations. However, mating typically occurs near the nesting beaches in the months before the start of the nesting season (Wood and Wood, 1980; Limpus, 1993), and there is strong evidence that male turtles in Australia are as philopatric as the females, returning to breed in the vicinity of their natal beaches (FitzSimmons et al., 1997a) and thereby minimizing the opportunity for gene flow across populations.

Hence, the nuclear DNA connectivity between the nGBR and sGBR observed in both studies is best explained by rare mating events where breeding migration routes overlap with courtship areas (FitzSimmons et al., 1997a; FitzSimmons et al., 1997b). The sGBR male and female turtles occupy foraging areas across the entire Great Barrier Reef, Torres Strait (between Australia and Papua New Guinea) and even into the Gulf of Carpentaria (Limpus, 2008). The timing of opportunistic mating is not well understood but it is likely to occur during their breeding migration, when sGBR male and female turtles traverse major nGBR foraging and courtship areas, creating the potential for nuclear but not mitochondrial gene flow, most likely by migrating sGBR males in breeding condition traveling south and receptive nGBR females already at their courtship areas. It is important to note that courtship areas may be at least a few hundred kilometers away from nesting beaches, as observed in green turtles that nest in Tortuguero, Costa Rica, and mate along migratory routes off Panama, 240 km distant (Meylan et al., 2013). Similarly, the large nGBR courtship areas in Torres Strait are 200 km (or more) northwest from the main nesting beach at Raine Island (for nesting distribution see (DES; CMS, n.d.). At the Howick Group feeding ground (south of nGBR) which is used by both nGBR and sGBR turtles, two vitellogenic female green turtles caught during mating were satellite-tagged and immediately migrated ~340 km north to nest at Raine Island (DES; CMS, n.d.). This suggests a broad geographic range in courtship areas used by the nGBR

rookery as also suggested for the sGBR rookery where courtship activity has been recorded at sites up to hundreds of kilometers distant from the main courtship areas (C.J. Limpus, unpublished data). The well-monitored foraging ground at the Howick Group (Jensen et al., 2018) could also be a site to further investigate questions of male mediated gene flow raised here.

Previously, Bountiful Island (sGoC) was shown to be distinct at four microsatellite loci and that has been attributed to differences in nesting phenology between the Gulf of Carpentaria (Austral winter) and the two GBR populations (Austral summer), which minimizes the chance of interbreeding (FitzSimmons et al., 1997b). This contrasts with our study, which finds genetic homogeneity for nuclear markers among all three rookeries. Furthermore, in this study, the nGoC and sGoC rookeries revealed different patterns of differentiation with the GBR rookeries. While the peak nesting activity differs between the Gulf of Carpentaria (April-October) and the Great Barrier Reef (October-March), low-level nesting in the Gulf of Carpentaria and the nGBR green turtle populations occurs year-round (Limpus, 2008). Tagging data (Limpus, 2008) show that some females nesting in the nGBR and sGBR take up residency in foraging areas across the Gulf of Carpentaria. Recent satellite telemetry research has tracked nGBR nesters tagged at Raine Island (nGBR) to foraging areas around Bountiful Island and other green turtle nesting areas in the GoC (DES; CMS). Hence, a similar interpopulation (opportunistic) mating scenario could be happening between the GoC and GBR populations during the months when there may be some overlap in the timing of migration. Reasons for discrepancies between the studies may include low statistical power in both nDNA studies due to low sample size, and it remains unresolved what level of admixture occurs between nesting populations in the GoC and the GBR. More research will be needed to fully resolve green turtle population dynamics along the Australian continental shelf.

In the Southwest Pacific, some green turtles from rookeries in New Caledonia reside in foraging grounds along the GBR, and vice versa, requiring them to cross the Coral Sea during breeding migrations (Limpus, 2008; Read et al., 2014). Nevertheless, there is no evidence for male-mediated gene flow between New Caledonian rookeries and those on the Australian shelf, suggesting that male turtles from New Caledonia do not breed in the GBR but return to New Caledonia to do so, and vice versa. Instead, results from this study indicate that chance mating encounters may be happening between green turtles from New Caledonian and Coral Sea rookeries while sharing foraging or migration corridors. More research is clearly needed to better understand the reproductive physiology and the mechanisms of male mediated gene flow between demographically independent nesting populations that share foraging habitats or migrate through courtship areas utilized by other genetic stocks. Sperm storage, female receptiveness, and understanding the timing and duration of vitellogenesis (females) and spermatogenesis (males) prior to the onset of their breeding migration all play a vital role in understanding these mechanisms (Kitayama et al., 2021). Additionally, the levels to which opportunistic mating might

happen are highly influenced by the geography of rookeries, foraging areas, and migratory routes.

Conservation implications

Our results prompt reconsideration of how population units for conservation have been defined for green turtles in some cases based solely on patterns of mtDNA variation. The incongruence we found in some cases between our nDNA results and mtDNA highlights the need for a more nuanced approach in determining the extent to which rookeries represent demographically independent populations for conservation (e.g., Guam and CNMI see above). Failure to recognize Guam and CNMI as separate MUs could misinform conservation expectations; both populations are severely depleted, and given the lack of demographic connectivity, it is unlikely that any recovery actions on one of the islands will influence population trends on the other (Seminoff et al., 2015). On the other hand, the increasing abundance trend of the large East Pacific nesting population in Michoacán is the result of sustained conservation measures enacted over the last 50 years to protect nests and breeding adults (Delgado-Trejo and Alvarado-Figueroa, 2012). The Michoacán population is clearly defined as a separate MU from Costa Rica based on mtDNA, however the nDNA connectivity, and implied male-mediated gene flow among these populations established in this study suggests that demographic benefits from conservation at one location extend beyond the MU boundaries. These findings provide a broader regional framework for future assessment of whole genomic variation and potential for local adaptation between the continental (Mexico and Central America) vs. island (Galapagos and Revillagigedo Islands) populations using whole genome sequencing approaches (Álvarez-Varas et al., 2021).

Furthermore, the regional genomic connectivity among mtDNA genetic stocks (MUs) indicated in this study has conservation importance with regard to the ability of certain rookeries to adapt to environmental change and can help inform metapopulation modeling approaches for sea turtles (Jensen et al., 2022). Because warmer incubation temperatures produce more female offspring, warmer temperatures due to climate change may produce a disproportionate abundance of females in green turtle populations (Chaloupka, 2004; Hawkes et al., 2007; Hays et al., 2010; Hays et al., 2017). Studies have projected a lack of male turtles in some populations in the near future. In the nGBR, immature turtles from one feeding ground (the Howick Group) were found to be 99% female (Jensen et al., 2018), and less than 1% of hatchlings born at Raine Island during the 2018 and 2019 nesting seasons were estimated to be male (Booth et al., 2020). At present, the nGBR boasts one of the largest green turtle rookeries in the world (Seminoff et al., 2015), but it is very vulnerable due to climate change-related feminization. Some models suggest that climate change could exacerbate the problem and even eliminate some turtle colonies (Hawkes et al., 2007; Hays et al., 2017; Jensen et al., 2022), but do not account for scenarios involving male mediated

gene flow. These models could be improved by accounting for male-mediated gene flow and a better understanding of its role in maintenance of genetic diversity and ultimately population persistence. The within-region differences discovered in the present study will need to be resolved with a more extensive population genomic assessment involving additional genome-wide variation, so that loci deviating from HWE, such as were seen in our study, can be evaluated more effectively in a genomic context where signal to noise ratios can be more finely tuned (Pearman et al., 2022).

In the meantime, however, the findings echoed with multiple analytical approaches used in this study warrant consideration because the effects of metapopulation processes are often difficult to infer from F_{ST} values alone (Pannell and Charlesworth, 2000). This lesson is more broadly applicable to other widely distributed marine species with complex, and often cryptic life history stages.

Finally, our study provides an extensive Pacific-wide nDNA baseline dataset for population assignment analyses (“stock ID”) for individual green turtles of unknown population origin, such as in fisheries bycatch, strandings, and foraging grounds. The ability to conduct such assignments has previously been limited to Mixed Stock Analysis approaches using mtDNA data that often result in large uncertainty and require adequate sample sizes (Jensen et al., 2013). Assignment of individuals with multi-locus markers is particularly useful for identifying the origin of fisheries bycatch more precisely (Stewart et al., 2016). While West Pacific rookeries are under-represented relative to those in the Central and East Pacific in this baseline dataset, it nevertheless includes regional representation that provides for ocean-scale stock assignment (Horne et al. 2023).

Rapid technological advancements make it increasingly feasible and cost effective to generate high quality whole genome sequence data that also characterizes genes under selection (Bentley et al., 2023), and thus overcome the limitations of using a relatively small number of microsatellite loci described in our study. Equally important however is the requirement to adequately sample populations. There continue to be the logistical challenges of obtaining adequate and representative samples of species such as sea turtles due to their threatened status, extensive distribution throughout the open ocean and numerous remote nesting regions of many countries. Through a coordinated, comprehensive sampling effort by an expansive network of collaborators, we present the results of a landmark study with an extensive set of samples; many previously used in published mtDNA studies. This international collaborative framework will need to be further expanded and maintained to address geographic gaps, and also temporal gaps in sampling, since some of these samples were collected over a 10-22 year timeframe, over 30 years ago, and may not adequately reflect any temporal shifts in diversity that may have occurred. There are relatively few studies that evaluate whether the geographic patterns of genetic structure vary significantly over ecological time scales in marine species (Toonen and Grosberg, 2011; Horne et al., 2012). Given their long lifespans and life history

traits that include nest site fidelity and overlapping generations, it is assumed that spatial genetic patterns of population structure generally persist over decades in sea turtles, which is within the reproductive lifespan of individuals (Bjorndal et al., 2005; Formia et al., 2007; Velez-Zuazo et al., 2008; Joseph and Nishizawa, 2016). However, severely depleted sea turtle populations that have been subjected to high anthropogenic mortality that has likely reduced reproductive lifespans of adults, may be more prone to shifts in genetic diversity within shorter decadal timeframes. Vargas et al. (2022) found a difference in mtDNA haplotype frequencies in the extremely small Brazilian leatherback nesting population over a 28-year period that could represent contemporary genetic drift. Our study provides a baseline for monitoring temporal changes for green turtle rookeries into the future. Nuclear DNA (nDNA) markers are a valuable complement to gain a comprehensive understanding of population boundaries and male-mediated gene flow by incorporating the male genetic connectivity component to analysis. With highly migratory, long-lived species like marine turtles, extensive collaboration with sampling, genetic marker application, and analysis techniques are central to understanding the connectivity of populations within oceans and worldwide.

Data availability statement

The original contributions presented in the study are included in the article/Supplementary Material. Further inquiries can be directed to the corresponding author.

Ethics statement

Ethical review and approval was not required for the animal study because all research in this study complied with all applicable animal welfare laws. Samples are archived in the US National Marine Fisheries Service (NMFS) Marine Turtle Molecular Research Sample Collection at the Southwest Fisheries Science Center and were collected under the respective national authorizations and CITES permit conditions and imported under CITES permit (<https://www.fisheries.noaa.gov/west-coast/science-data/marine-mammal-and-sea-turtle-research-tissue-collection>).

Author contributions

SR, JBH, PD, and LK performed the data analysis, while laboratory analysis and microsatellite genotyping were done by SR. SR, JBH, and PD drafted the manuscript and figures. NF, MJ, and CL performed review and additional contributions to the manuscript. Sample collection and curation were handled by MJ, NF, GB, RF, JCH, JH, MH, TTJ, CL, SM, RP, LSM, TS, MT, EV, PZ, and PD. All authors contributed to the article and approved the submitted version.

Funding

Funding provided by National Oceanic and Atmospheric Administration's National Marine Fisheries Service and a National Research Council Research Associateship to JBH.

Acknowledgments

We extend our gratitude to I-Juinn Cheng, Ian Bell, Brian Peck, Cristian Cayan, Jeanette Norman, Damien Broderick, Rod Kennett, Jeff Miller, Shawn Wusstig, and Karen Frutche for contributing samples originally used in earlier studies. We thank the students and volunteers from Facultad de Ciencias, UNAM, but specifically to Rafael Roldan Serralde and Arturo Juárez, who participated actively in the field work in Islas Revillagigedo. We thank Luis G. Fonseca, Wilberth N. Villachica and numerous volunteers for assisting and funding the collection of samples in NW Costa Rica. Kumar would like to acknowledge: Earl Possardt of the Fish and Wildlife Service; Research Assistants; Volunteer Program of the University of Costa Rica; Cecilia Mesén from the organization Volunteers and Projects; Fundecodes and Minae-Sinac. We also thank the Commonwealth of the Northern Mariana Islands Department of Lands & Natural Resources, Division of Fish and Wildlife for supporting this research. We thank the Galapagos National Park, and all volunteers from the Charles Darwin Foundation in the field, but specifically to M. Robles, C. Chasiluisa, I. Bravo, S. Castillo, N. Beaumont, E. Cadena, J. Carrión, M. A. Fernie, C. Angulo, F. Gómez, M. Bosquirolli, S. Cahoon, E. Palacios, M. González, J. Solano, D. Páez, C. R. Hasbun, P. Swanell, A. Gaos, and I. Yáñez who participated actively and provided research assistance in the field work at the Galapagos Islands. This research was performed while JBH held a

National Research Council Associateship at the National Oceanic and Atmospheric Administration. For laboratory analysis we acknowledge Erin LaCasella, Amy Frey, Victoria Pease, Gabriella Serra-Valente and Amy Lanci. We thank Summer Martin and Kelly Stewart for advice on earlier drafts of the manuscript, Eric Archer for assistance with data analysis, Robin LeRoux for management support, and Laurie Meyer for software support. Additionally, we thank all volunteers, students and researchers for sample collection and coordination with special thanks, in loving memory, to the late Shandell Brunson.

Conflict of interest

The authors declare that the research was conducted in the absence of any commercial or financial relationships that could be construed as a potential conflict of interest.

Publisher's note

All claims expressed in this article are solely those of the authors and do not necessarily represent those of their affiliated organizations, or those of the publisher, the editors and the reviewers. Any product that may be evaluated in this article, or claim that may be made by its manufacturer, is not guaranteed or endorsed by the publisher.

Supplementary material

The Supplementary Material for this article can be found online at: <https://www.frontiersin.org/articles/10.3389/fmars.2023.1116941/full#supplementary-material>

References

- Allendorf, F. W. (2017). Genetics and the conservation of natural populations: allozymes to genomes. *Mol. Ecol.* 26, 420–430. doi: 10.1111/mec.13948
- Alvarado, J., and Figueroa, A. (1991). Comporta miento reproductivo de la tortuga negra chelonia agassizii. *Cienc. Desarro.* 17, 43–49.
- Álvarez-Varas, R., Rojas-Hernández, N., Heidemeyer, M., Riginos, C., Benítez, H. A., Araya-Donoso, R., et al. (2021). Green, yellow or black? genetic differentiation and adaptation signatures in a highly migratory marine turtle. *Proc. R. Soc. B Biol. Sci.* 288, 20210754. doi: 10.1098/rspb.2021.0754
- Archer, F. I., Adams, P. E., and Schneiders, B. B. (2017). STRATAG: an R package for manipulating, summarizing and analysing population genetic data. *Mol. Ecol. Resour.* 17, 5–11. doi: 10.1111/1755-0998.12559
- Avisé, J. C., Bowen, B. W., Lamb, T., Meylan, A. B., and Bermingham, E. (1992). Mitochondrial DNA evolution at a turtle's pace: evidence for low genetic variability and reduced microevolutionary rate in the testudines. *Mol. Biol. Evol.* 9, 457–473. doi: 10.1093/oxfordjournals.molbev.a040735
- Benjamini, Y., and Hochberg, Y. (1995). Controlling the false discovery rate: a practical and powerful approach to multiple testing. *J. R. Stat. Soc. Ser. B* 57, 289–300. doi: 10.1111/j.2517-6161.1995.tb02031.x
- Bentley, B. P., Carrasco-Valenzuela, T., Ramos, E. K. S., Pawar, H., Souza Arantes, L., Alexander, A., et al. (2023). Divergent sensory and immune gene evolution in sea turtles with contrasting demographic and life histories. *Proc. Natl. Acad. Sci.* 120, e2201076120. doi: 10.1073/pnas.2201076120
- Bjorndal, K. A., Bolten, A. B., and Tröeng, S. (2005). Population structure and genetic diversity in green turtles nesting at tortuguero, Costa Rica, based on mitochondrial DNA control region sequences. *Mar. Biol.* 147, 1449–1457. doi: 10.1007/s00227-005-0045-y
- Blanco, G. S., Morreale, S. J., Bailey, H., Seminoff, J. A., Paladino, F. V., and Spotila, J. R. (2012). Post-nesting movements and feeding grounds of a resident East Pacific green turtle chelonia mydas population from Costa Rica. *Endanger. Species Res.* 18, 233–245. doi: 10.3354/esr00451
- Booth, D. T., Dunstan, A., Bell, I. P., Reina, R., and Tedeschi, J. (2020). Low male production at the world's largest green turtle rookery. *Mar. Ecol. Prog. Ser.* 653, 181–190. doi: 10.3354/meps13500
- Bowen, B. W., and Karl, S. A. (2007). Population genetics and phylogeography of sea turtles. *Mol. Ecol.* 16, 4886–4907. doi: 10.1111/j.1365-294X.2007.03542.x
- Bradshaw, P. J., Broderick, A. C., Carreras, C., Fuller, W., Snape, R. T. E., Wright, L. I., et al. (2018). Defining conservation units with enhanced molecular tools to reveal fine scale structuring among Mediterranean green turtle rookeries. *Biol. Conserv.* 222, 253–260. doi: 10.1016/j.biocon.2017.12.014
- Broderick, A. C., Frauenstein, R., Glen, F., Hays, G. C., Jackson, A. L., Pelembe, T., et al. (2006). Are green turtles globally endangered? *Glob. Ecol. Biogeogr.* 15, 21–26. doi: 10.1111/j.1466-822x.2006.00195.x
- Brookfield, J. (1996). A simple new method for estimating null allele frequency from heterozygote deficiency. *Mol. Ecol.* 5, 453–455. doi: 10.1046/j.1365-294X.1996.00098.x
- Brothers, J. R., and Lohmann, K. J. (2018). Evidence that magnetic navigation and geomagnetic imprinting shape spatial genetic variation in Sea turtles. *Curr. Biol.* 28, 1325–1329.e2. doi: 10.1016/j.cub.2018.03.022
- Chaloupka, M. Y. (2004). "Southern great barrier reef green sea turtle (Chelonia mydas) stock: consequences of local sex-biased harvesting" in *Species Conservation and Management: Case Studies* H.R. Akcakaya, M.A. Burgman, O. Kindvall, C.C. Wood, P. J. Sjogren-Gulve, S. Hatfield, et al. eds. (New York: Oxford University Press), 340–354.

- Chaloupka, M. Y., and Balazs, G. H. (2007). Using Bayesian state-space modelling to assess the recovery and harvest potential of the Hawaiian green sea turtle stock. *Ecol. Modell.* 205, 93–109. doi: 10.1016/j.ecolmodel.2007.02.010
- Chaloupka, M. Y., Bjørndal, K. A., Balazs, G. H., Bolten, A. B., Ehrhart, L. M., Limpus, C. J., et al. (2008). Encouraging outlook for recovery of a once severely exploited marine megaherbivore. *Glob. Ecol. Biogeogr.* 17, 297–304. doi: 10.1111/j.1466-8238.2007.00367.x
- Crowell Comuzzie, D. K., and Owens, D. W. (1990). A quantitative analysis of courtship behavior in captive green Sea turtles (*Chelonia mydas*). *Herpetologica* 46, 195–202. <http://www.jstor.org/stable/3892904>
- Dąbrowski, M. J., Bornelöv, S., Kruczyk, M., Baltzer, N., and Komorowski, J. (2015). “True” null allele detection in microsatellite loci: a comparison of methods, assessment of difficulties and survey of possible improvements. *Mol. Ecol. Resour.* 15, 477–488. doi: 10.1111/1755-0998.12326
- Delgado-Trejo, C., and Alvarado-Figueroa, J. (2012). “Current conservation status of the black Sea turtle in michoacan, Mexico,” in *Sea Turtles of the Eastern pacific*. Eds. J. Seminoff and B. Wallace (Tucson, AZ: University of Arizona Press), 263–278.
- De Meeüs, T. (2018). Revisiting FIS, FST, wahlund effects, and null alleles. *J. Hered.* 109, 446–456. doi: 10.1093/jhered/esx106
- DES; CMS Global Atlas of Marine Turtle Nesting Distribution and Migration. Available at: <https://apps.information.qld.gov.au/TurtleDistribution/>.
- Dethmers, K. E. M., Broderick, D., Moritz, C., FitzSimmons, N. N., Limpus, C. J., Lavery, S., et al. (2006). The genetic structure of Australasian green turtles (*Chelonia mydas*): exploring the geographical scale of genetic exchange. *Mol. Ecol.* 15, 3931–3946. doi: 10.1111/j.1365-294X.2006.03070.x
- Dharmarajan, G., Beatty, W. S., and Rhodes, J. O.E. (2013). Heterozygote deficiencies caused by a wahlund effect: dispelling unfounded expectations. *J. Wildl. Manage.* 77, 226–234. doi: 10.1002/jwmg.458
- Dutton, P. H. (1996). “Methods for collection and preservation of samples for sea turtle genetic studies,” in *Proceedings of the international symposium on sea turtle conservation genetics*. Eds. B. W. Bowen and W. N. Witzell (Miami, Florida, Florida: NOAA Technical Memorandum NMFS-SEFSC-396), 17–24.
- Dutton, P. H., Bowen, B. W., Owens, D. W., Barragan, A. R., and Davis, S. K. (1999). Global phylogeography of the leatherback turtle (*Dermochelys coriacea*). *J. Zool.* 248, 397–409. doi: 10.1017/S0952836999007116
- Dutton, P. H., and Frey, A. (2009). Characterization of polymorphic microsatellite markers for the green turtle (*Chelonia mydas*). *Mol. Ecol. Resour.* 9, 354–356. doi: 10.1111/j.1755-0998.2008.02443.x
- Dutton, P. H., Jensen, M. P., Frey, A., LaCasella, E. L., Balazs, G. H., Zárate, P. M., et al. (2014a). Population structure and phylogeography reveal pathways of colonization by a migratory marine reptile (*Chelonia mydas*) in the central and eastern pacific. *Ecol. Evol.* 4, 4317–4331. doi: 10.1002/ece3.1269
- Dutton, P. H., Jensen, M. P., Frutchey, K., Frey, A., LaCasella, E. L., Balazs, G. H., et al. (2014b). Genetic stock structure of green turtle (*Chelonia mydas*) nesting populations across the pacific islands. *Pacific Sci.* 68, 451–464. doi: 10.2984/68.4.1
- Dutton, P. H., LeRoux, R. A., LaCasella, E. L., Seminoff, J. A., Eguchi, T., and Dutton, D. L. (2019). Genetic analysis and satellite tracking reveal origin of the green turtles in San Diego bay. *Mar. Biol.* 166, 1–13. doi: 10.1007/s00227-018-3446-4
- Dutton, P. H., Rodén, S. E., Stewart, K. R., LaCasella, E. L., Tiwari, M., Formia, A., et al. (2013). Population stock structure of leatherback turtles (*Dermochelys coriacea*) in the Atlantic revealed using mtDNA and microsatellite markers. *Conserv. Genet.* 14, 625–636. doi: 10.1007/s10592-013-0456-0
- Ferreira, L. C., Thums, M., Fossette, S., Wilson, P., Shimada, T., Tucker, A. D., et al. (2021). Multiple satellite tracking datasets inform green turtle conservation at a regional scale. *Divers. Distrib.* 27, 249–266. doi: 10.1111/ddi.13197
- FitzSimmons, N. N., and Limpus, C. J. (2014). Marine turtle genetic stocks of the indo-pacific: identifying boundaries and knowledge gaps. *Indian Ocean Turt. Newsl.* 20, 2–18.
- FitzSimmons, N. N., Limpus, C. J., Norman, J. A., Goldizen, A., Miller, J. D., and Moritz, C. (1997a). Philopatry of male marine turtles inferred from mitochondrial DNA markers. *Proc. Natl. Acad. Sci.* 94, 8912–8917. doi: 10.1073/pnas.94.16.8912
- FitzSimmons, N. N., Moritz, C., Limpus, C. J., Pope, L., and Prince, R. (1997b). Geographic structure of mitochondrial and nuclear gene polymorphisms in Australian green turtle populations and male-biased gene flow. *Genetics* 147, 1843–1854. doi: 10.1093/genetics/147.4.1843
- FitzSimmons, N. N., Moritz, C., and Moore, S. S. (1995). Conservation and dynamics of microsatellite loci over 300 million years of marine turtle evolution. *Mol. Biol. Evol.* 12, 432–440. doi: 10.1093/oxfordjournals.molbev.a040218
- FitzSimmons, N. N., Pittard, S. D., McIntyre, N., Jensen, M. P., Guinea, M., Hamann, M., et al. (2020). Phylogeography, genetic stocks, and conservation implications for an Australian endemic marine turtle. *Aquat. Conserv. Mar. Freshw. Ecosyst.* 30, 440–460. doi: 10.1002/aqc.3270
- Fonseca, L. G., Tomillo, P. S., Villachica, W. N., Quirós, W. M., Pesquero, M., Heidemeyer, M., et al. (2018). Discovery of a major East pacific green turtle (*Chelonia mydas*) nesting population in Northwest Costa Rica. *Chelonian Conserv. Biol.* 17, 169–176. doi: 10.2744/CCB-1264.1
- Formia, A., Broderick, A. C., Glen, F., Godley, B. J., Hays, G. C., and Bruford, M. W. (2007). Genetic composition of the ascension island green turtle rookery based on mitochondrial DNA: implications for sampling and diversity. *Endanger Species Res.* 3, 145–158. doi: 10.3354/esr003145
- Frey, A., Dutton, P. H., and Balazs, G. H. (2013). Insights on the demography of cryptic nesting by green turtles (*Chelonia mydas*) in the main Hawaiian islands from genetic relatedness analysis. *J. Exp. Mar. Biol. Ecol.* 442, 80–87. doi: 10.1016/j.jembe.2013.01.030
- Gaos, A. R., Martin, S. L., and Jones, T. T. (2020). Sea Turtle tagging in the Mariana islands training and testing (MITT) study area. PIFSC data report, DR-20-003. doi: 10.25923/qq2e-e198
- Hamabata, T., Matsuo, A., Sato, M. P., Kondo, S., Kameda, K., Kawazu, I., et al. (2020). Natal origin identification of green turtles in the north pacific by genome-wide population analysis with limited DNA samples. *Front. Mar. Sci.* 7. doi: 10.3389/fmars.2020.00658
- Hart, C. E., Blanco, G. S., Coyne, M. S., Delgado-Trejo, C., Godley, B. J., Jones, T. T., et al. (2015). Multinational tagging efforts illustrate regional scale of distribution and threats for East pacific green turtles (*Chelonia mydas agassizii*). *PLoS One* 10, e0116225. doi: 10.1371/journal.pone.0116225
- Hawkes, L. A., Broderick, A. C., Godfrey, M. H., and Godley, B. J. (2007). Investigating the potential impacts of climate change on a marine turtle population. *Glob. Change Biol.* 13, 923–932. doi: 10.1111/j.1365-2486.2006.01320.x
- Hays, G. C., Fossette, S., Katselidis, K. A., Schofield, G., and Gravenor, M. B. (2010). Breeding periodicity for Male Sea turtles, operational sex ratios, and implications in the face of climate change. *Conserv. Biol.* 24, 1636–1643. doi: 10.1111/j.1523-1739.2010.01531.x
- Hays, G. C., Mazaris, A. D., Schofield, G., and Laloë, J.-O. (2017). Population viability at extreme sex-ratio skews produced by temperature-dependent sex determination. *Proc. R. Soc London B Biol. Sci.* 284. doi: 10.1098/rspb.2016.2576
- Hedrick, P. W. (2005). A standardized genetic differentiation measure. *Evolution* 59, 1633–1638. doi: 10.1111/j.0014-3820.2005.tb01814.x
- Horne, J. B. (2014). Thinking outside the barrier: neutral and adaptive divergence in indo-pacific coral reef faunas. *Evol. Ecol.* 28, 991–1002. doi: 10.1007/s10682-014-9724-9
- Horne, J. B., Momigliano, P., Welch, D. J., Newman, S. J., and van, H. (2012). Searching for common threads in threadfins: phylogeography of Australian polynemids in space and time. *Mar. Ecol. Prog. Ser.* 449, 263–276. doi: 10.3354/meps09557
- Horne, J. B., Rodén, S. E., LaCasella, E. L., Frey, A., Martin, S. L., Jones, T. T., et al. (2023). Origins of green turtle fishery bycatch in the central pacific revealed by mixed genetic markers. *Front. Mar. Sci.* 10. doi: 10.3389/fmars.2023.1112842
- Jackson, J. B. C. (2001). What was natural in the coastal oceans? *Proc. Natl. Acad. Sci.* 98, 5411–5418. doi: 10.1073/pnas.091028998
- Jensen, M. P., Allen, C. D., Eguchi, T., Bell, I. P., LaCasella, E. L., Hilton, W. A. W. A., et al. (2018). Environmental warming and feminization of one of the largest sea turtle populations in the world. *Curr. Biol.* 28, 154–159. doi: 10.1016/j.cub.2017.11.057
- Jensen, M. P., Eguchi, T., FitzSimmons, N. N., McCarthy, M. A., Fuentes, M. M. P. B., Hamann, M., et al. (2022). Integrating climate change and management scenarios in population models to guide the conservation of marine turtles. *Bull. Mar. Sci.* 98, 131–154. doi: 10.5343/bms.2021.0033
- Jensen, M. P., FitzSimmons, N. N., Bourjea, J., Hamabata, T., Reece, J. S., and Dutton, P. H. (2019). The evolutionary history and global phylogeography of the green turtle (*Chelonia mydas*). *J. Biogeogr.* 46, 860–870. doi: 10.1111/jbi.13483
- Jensen, M. P., FitzSimmons, N. N., Dutton, P. H., and Michael, P. (2013). “Molecular genetics of sea turtles,” in *The biology of Sea turtles, volume 3*. Eds. J. Wyneken, K. J. Lohmann and J. A. Musick (Boca Raton, FL: CRC Press), 135–154.
- Jombart, T., and Ahmed, I. (2011). ADEGENET 1.3-1: new tools for the analysis of genome-wide SNP data. *Bioinformatics* 27, 3070–3071. doi: 10.1093/bioinformatics/btr521
- Joseph, J., and Nishizawa, H. (2016). Genetic structure and diversity of green turtles (*Chelonia mydas*) from two rookeries in the South China Sea. *J. Sustainability Sci. Manage. Special* (1), 41–47. <http://umt-ir.umt.edu.my:8080/handle/123456789/6948>
- Jost, L. (2008). G_{ST} and its relatives do not measure differentiation. *Mol. Ecol.* 17, 4015–4026. doi: 10.1111/j.1365-294X.2008.03887.x
- Jost, L., Archer, F., Flanagan, S., Gaggiotti, O., Hoban, S., and Latch, E. (2018). Differentiation measures for conservation genetics. *Evol. Appl.* 11, 1139–1148. doi: 10.1111/eva.12590
- Juarez-Ceron, J. A., Sarti-Martinez, A. L., and Dutton, P. H. (2003). “First study of the green/black turtles of the revillagigedo archipelago: a unique nesting stock in the Eastern pacific,” in *Proceedings of the twenty-second annual symposium on Sea turtle biology and conservation*. Ed. J. A. Seminoff (Miami, FL: NOAA Technical Memorandum NMFS-SEFSC-503), 70.
- Karaman, S., Turkoz, O., Carreras, C., Yilmaz, C., Sönmez, B., Candan, O., et al. (2022). Population genetic diversity of green turtles, *Chelonia mydas*, in the Mediterranean revisited. *Mar. Biol.* 169, 77. doi: 10.1007/s00227-022-04068-1
- Kitayama, C., Tomiyasu, J., Bochimoto, H., Kondo, S., Tokuda, K., Ogawa, R., et al. (2021). Histological findings of sperm storage in green turtle (*Chelonia mydas*) oviduct. *Sci. Rep.* 11, 19416. doi: 10.1038/s41598-021-98917-6
- Komoroske, L. M., Jensen, M. P., Stewart, K. R., Shamblin, B. M., and Dutton, P. H. (2017). Advances in the application of genetics in marine turtle biology and conservation. *Front. Mar. Sci.* 4. doi: 10.3389/fmars.2017.00156

- Larson, S. E., Daly-Engel, T. S., and Phillips, N. M. (2017). "Chapter three - review of current conservation genetic analyses of northeast pacific sharks," in *Northeast pacific shark biology, research and conservation part a*. Eds. S. E. Larson and M. B. Lowry (Cambridge, MA: Academic Press), 79–110. doi: 10.1016/bs.amb.2017.06.005
- Levasseur, K., Stapleton, S. P., Fuller, M., and Quattro, J. (2019). Exceptionally high natal homing precision in hawksbill sea turtles to insular rookeries of the Caribbean. *Mar. Ecol. Prog. Ser.* 620, 155–171. doi: 10.3354/meps12957
- Limpus, C. J. (1993). The green turtle, *Chelonia mydas*, in Queensland: breeding males in the southern great barrier reef. *Wildl. Res.* 20, 513–523. doi: 10.1071/WR9930513
- Limpus, C. (2008). A biological review of Australian marine turtles. 2. green turtle *Chelonia mydas* (Linnaeus). *Rep. Queensl. Environ. Prot. Agency*.
- Limpus, C. J., Miller, J. D., Parmenter, C. J., Reimer, D., McLachlan, N., and Webb, R. (1992). Migration of green (*Chelonia mydas*) and loggerhead (*Caretta caretta*) turtles to and from eastern Australian rookeries. *Wildl. Res.* 19, 347–358. doi: 10.1071/WR920347
- Martin, S. L., Van Houtan, K. S., Jones, T. T., Aguon, C. F., Gutierrez, J. T., Tibbatts, R. B., et al. (2016). Five decades of marine megafauna surveys from Micronesia. *Front. Mar. Sci.* 2. doi: 10.3389/fmars.2015.00116
- Meirmans, P. G. (2020). Genodive version 3.0: easy-to-use software for the analysis of genetic data of diploids and polyploids. *Mol. Ecol. Resour.* 20, 1126–1131. doi: 10.1111/1755-0998.13145
- Meirmans, P. G., and Hedrick, P. W. (2011). Assessing population structure: F(ST) and related measures. *Mol. Ecol. Resour.* 11, 5–18. doi: 10.1111/j.1755-0998.2010.02927.x
- Mettler, E., Clyde-Brockway, C. E., Honarvar, S., and Paladino, F. V. (2019). Migratory corridor linking Atlantic green turtle, *Chelonia mydas*, nesting site on bioko island, equatorial Guinea to Ghanaian foraging grounds. *PLoS One* 14, e0213231. doi: 10.1371/journal.pone.0213231
- Meylan, A. B., Meylan, P. A., and Ordoñez Espinosa, C. (2013). Sea Turtles of bocas del toro province and the comarca ngobe-bugle, republic of Panama. *Chelonia Conserv. Biol.* 12, 17–33. doi: 10.2744/CCB-0948.1
- Moritz, C. (1994). Defining "Evolutionarily significant units" for conservation. *Trends Ecol. Evol.* 9, 373–375. doi: 10.1016/0169-5347(94)90057-4
- Naro-Maciel, E., Gaughran, S. J., Putman, N. F., Amato, G., Arengo, F., Dutton, P. H., et al. (2014). Predicting connectivity of green turtles at Palmyra atoll, central pacific: a focus on mtDNA and dispersal modelling. *J. R. Soc. Interface* 11, 20130888. doi: 10.1098/rsif.2013.0888
- Owens, D. W. (1997). "Hormones in the life history of sea turtles," in *The biology of Sea turtles*. Eds. P. L. Lutz and J. A. Musick (Boca Raton, FL: CRC Press), 315–341.
- Pannell, J. R., and Charlesworth, B. (2000). Effects of metapopulation processes on measures of genetic diversity. *Philos. Trans. R. Soc. London. Ser. B Biol. Sci.* 355, 1851–1864. doi: 10.1098/rstb.2000.0740
- Paradis, E., and Schliep, K. (2019). Ape 5.0: an environment for modern phylogenetics and evolutionary analyses in R. *Bioinformatics* 35, 526–528. doi: 10.1093/bioinformatics/bty633
- Pearman, W. S., Urban, L., and Alexander, A. (2022). Commonly used hardy–Weinberg equilibrium filtering schemes impact population structure inferences using RADseq data. *Mol. Ecol. Resour.* 00, 1–15. doi: 10.1111/1755-0998.13646
- Petkova, D., Novembre, J., and Stephens, M. (2016). Visualizing spatial population structure with estimated effective migration surfaces. *Nat. Genet.* 48, 94–100. doi: 10.1038/ng.3464
- Read, T. C., Wantiez, L., Werry, J., and Farman, R. (2014). Migrations of green turtles (*Chelonia mydas*) between nesting and foraging grounds across the coral Sea. *PLoS One* 9, e100083. doi: 10.1371/journal.pone.0100083
- Riskas, K. A., Fuentes, M. M. P. B., and Hamann, M. (2016). Justifying the need for collaborative management of fisheries bycatch: a lesson from marine turtles in Australia. *Biol. Conserv.* 196, 40–47. doi: 10.1016/j.biocon.2016.02.001
- Rodén, S. E., Morin, P. A., Frey, A., Balazs, G. H., Zárate, P. M., Cheng, I.-J. J., et al. (2013). Green turtle population structure in the pacific: new insights from single nucleotide polymorphisms and microsatellites. *Endanger. Species Res.* 20, 227–234. doi: 10.3354/esr00500
- Rousset, F. (2008). genepop'007: a complete re-implementation of the genepop software for windows and Linux. *Mol. Ecol. Resour.* 8, 103–106. doi: 10.1111/j.1471-8286.2007.01931.x
- Ryman, N., and Palm, S. (2006). POWSIM: a computer program for assessing statistical power when testing for genetic differentiation. *Mol. Ecol. Notes* 6, 600–602. doi: 10.1111/j.1471-8286.2006.01378.x
- Ryman, N., Palm, S., André, C., Carvalho, G. R., Dahlgren, T. G., Jorde, P. E., et al. (2006). Power for detecting genetic divergence: differences between statistical methods and marker loci. *Mol. Ecol.* 15, 2031–2045. doi: 10.1111/j.1365-294X.2006.02839.x
- Sambrook, J., Fritsch, E. F., and Maniatis, T. (1989). *Molecular cloning: a laboratory manual*, vol. 3 (New York, New York: Cold Spring Harbour Laboratory Press).
- Seminoff, J. A. (2004). Sea turtles, red listing, and the need for regional assessments. *Marine Turtle Newsletter* 106, 4–6.
- Seminoff, J. A., Allen, C. D., Balazs, G. H., Dutton, P. H., Eguchi, T., Haas, H., et al. (2015). *Status review of the green turtle (Chelonia mydas) under the U.S. endangered species act*. NOAA technical memorandum (NOAA-NMFS-SWFS-539), 571.
- Seminoff, J. A., Zárate, P. M., Coyne, M. S., Foley, D. G. D., Parker, D. M., Lyon, B. N., et al. (2008). Post-nesting migrations of galápagos green turtles *Chelonia mydas* in relation to oceanographic conditions: integrating satellite telemetry with remotely sensed ocean data. *Endanger. Species Res.* 4, 57–72. doi: 10.3354/esr00066
- Shamblin, B. M., Bolten, A. B., Abreu-Grobois, F. A., Bjørndal, K. A., Cardona, L., Carreras, C., et al. (2014). Geographic patterns of genetic variation in a broadly distributed marine vertebrate: new insights into loggerhead turtle stock structure from expanded mitochondrial DNA sequences. *PLoS One* 9, e85956. doi: 10.1371/journal.pone.0085956
- Shamblin, B. M., Dutton, P. H., Bjørndal, K. A., Bolten, A. B., Naro-maciel, E., Santos, A. J. B., et al. (2015). Deeper mitochondrial sequencing reveals cryptic diversity and structure in Brazilian green turtle rookeries. *Chelonian Conserv. Biol.* 14, 167–172. doi: 10.2744/CCB-1152.1
- Shamblin, B. M., Hart, K. M., Martin, K., Ceriani, S. A., Bagley, D., Mansfield, K. L., et al. (2020). Green turtle mitochondrial microsatellites indicate finer-scale natal homing to isolated islands than to continental nesting sites. *Mar. Ecol. Prog. Ser.* 643, 159–171. doi: 10.3354/meps13348
- Shimada, T., Limpus, C. J., Hamann, M., Bell, I. P., Esteban, N., Groom, R., et al. (2020). Fidelity to foraging sites after long migrations. *J. Anim. Ecol.* 89, 1008–1016. doi: 10.1111/1365-2656.13157
- Stewart, K. R., LaCasella, E. L., Rodén, S. E., Jensen, M. P., Stokes, L. W., Epperly, S. P., et al. (2016). Nesting population origins of leatherback turtles caught as bycatch in the U.S. pelagic longline fishery. *Ecosphere* 7, e01272. doi: 10.1002/ecs2.1272/epdf
- Summers, T. M., Jones, T. T., Martin, S. L., Hapdei, J. R., Ruak, J. K., and Lepczyk, C. A. (2017). Demography of marine turtles in the nearshore environments of the northern Mariana islands. *Pacific Sci.* 71, 269–286. doi: 10.2984/71.3.3
- Teske, P. R., Golla, T. R., Sandoval-Castillo, J., Emami-Khoiy, A., van der Lingen, C. D., von der Heyden, S., et al. (2018). Mitochondrial DNA is unsuitable to test for isolation by distance. *Sci. Rep.* 8, 8448. doi: 10.1038/s41598-018-25138-9
- Tikochinski, Y., Bendelac, R., Barash, A., Daya, A., Levy, Y., and Friedmann, A. (2012). Mitochondrial DNA STR analysis as a tool for studying the green sea turtle (*Chelonia mydas*) populations: the Mediterranean Sea case study. *Mar. Genom.* 6, 17–24. doi: 10.1016/j.margen.2012.01.002
- Tikochinski, Y., Bradshaw, P., Daya, A., Demetropoulos, A., Mastrogiacomo, A., Broderick, A., et al. (2018). Mitochondrial DNA short tandem repeats unveil hidden population structuring and migration routes of an endangered marine turtle. *Aquat. Conserv.: Mar. Freshw. Ecosyst.* 28, 788–797. doi: 10.1002/aqc.2908
- Toews, D. P. L., and Brelsford, A. (2012). The biogeography of mitochondrial and nuclear discordance in animals. *Mol. Ecol.* 21, 3907–3930. doi: 10.1111/j.1365-294X.2012.05664.x
- Toonen, R. J., and Grosberg, R. K. (2011). "Causes of chaos: spatial and temporal genetic heterogeneity in the intertidal anemuran crab petrolisthes cinctipes," in *Phylogeography and population genetics in Crustacea* (Boca Raton, Florida: CRC press), 75–107.
- Ulrich, G. F., and Parkes, A. S. (1978). The green sea turtle (*Chelonia mydas*): further observations on breeding in captivity. *J. Zool.* 185, 237–251. doi: 10.1111/j.1469-7998.1978.tb03324.x
- Valdivia, A., Wolf, S., and Suckling, K. (2019). Marine mammals and sea turtles listed under the U.S. endangered species act are recovering. *PLoS One* 14, e0210164. doi: 10.1371/journal.pone.0210164
- Van Oosterhout, C., Hutchinson, W. F., Wills, D. P. M., and Shipley, P. (2004). MICRO-CHECKER: software for identifying and correcting genotyping errors in microsatellite data. *Mol. Ecol. Notes* 4, 535–538. doi: 10.1111/j.1471-8286.2004.00684.x
- Vargas, S. M., Barcelos, A. C., Rocha, R. G., Guimarães, P., Amorim, L., Martinelli, A., et al. (2022). Genetic monitoring of the critically endangered leatherback turtle (*Dermodochelys coriacea*) in the south West Atlantic. *Reg. Stud. Mar. Sci.* 55, 102530. doi: 10.1016/j.risma.2022.102530
- Velez-Zuazo, X., Ramos, W. D., van Dam, R. P., Diez, C. E., Abreu-Grobois, F. A., and McMillan, W. O. (2008). Dispersal, recruitment and migratory behaviour in a hawksbill sea turtle aggregation. *Mol. Ecol.* 17, 839–853. doi: 10.1111/j.1365-294X.2007.03635.x
- Wallace, B. P., DiMatteo, A. D., Bolten, A. B., Chaloupka, M. Y., Hutchinson, B. J., Abreu-Grobois, F. A., et al. (2011). Global conservation priorities for marine turtles. *PLoS One* 6, 12–13. doi: 10.1371/journal.pone.0024510
- Wallace, B. P., DiMatteo, A. D., Hurley, B. J., Finkbeiner, E. M., Bolten, A. B., Chaloupka, M. Y., et al. (2010). Regional management units for marine turtles: a novel framework for prioritizing conservation and research across multiple scales. *PLoS One* 5, e15465. doi: 10.1371/journal.pone.0015465
- Wang, C., Schroeder, K. B., and Rosenberg, N. A. (2012). A maximum-likelihood method to correct for allelic dropout in microsatellite data with no replicate genotypes. *Genetics* 192, 651–669. doi: 10.1534/genetics.112.139519
- Waples, R. S. (2015). Testing for hardy–Weinberg proportions: have we lost the plot? *J. Hered.* 106, 1–19. doi: 10.1093/jhered/esu062
- Weir, B. S., and Cockerham, C. C. (1984). Estimating f-statistics for the analysis of population structure. *Evol. (N. Y.)* 38, 1358–1370. doi: 10.2307/2408641
- Whitlock, M. C. (2011). G'ST and d do not replace FST. *Mol. Ecol.* 20, 1083–1091. doi: 10.1111/j.1365-294X.2010.04996.x
- Witherington, B. E., Bresette, M. J., and Herren, R. (2006). "Chelonia mydas – green turtle," in *Biology and conservation of Florida turtles. chelonian research monographs*, vol. 3. Ed. P. A. Meylan, (Lunenburg, MA: Chelonian Research Foundation) 90–104.
- Wood, J. R., and Wood, F. E. (1980). Reproductive biology of captive green Sea turtles *Chelonia mydas*. *Integr. Comp. Biol.* 20, 499–505. doi: 10.1093/icb/20.3.499