

Association Between Long-term Ambient PM_{2.5} Exposure and Cardiovascular Outcomes Among US Hemodialysis Patients



Yuzhi Xi, David B. Richardson, Abhijit V. Kshirsagar, Timothy J. Wade, Jennifer E. Flythe, Eric A. Whitsel, and Ana G. Rappold

Rationale & Objective: Ambient PM_{2.5} (particulate matter with a diameter of 2.5 microns) is a ubiquitous air pollutant with established adverse cardiovascular (CV) effects. However, quantitative estimates of the association between PM_{2.5} exposure and CV outcomes in the setting of kidney disease are limited. This study assessed the association of long-term PM_{2.5} exposure with CV events and cardiovascular disease (CVD)-specific mortality among patients receiving maintenance in-center hemodialysis (HD).

Study Design: Retrospective cohort study.

Settings & Participants: 314,079 adult kidney failure patients initiating HD between 2011 and 2016 identified from the US Renal Data System.

Exposure: Estimated daily ZIP code-level PM_{2.5} concentrations were used to calculate each participant's annual average PM_{2.5} exposure based on the dialysis clinics visited during the 365 days before the outcome.

Outcome: CV event and CVD-specific mortality were ascertained based on ICD-9/ICD-10 diagnostic codes and recorded cause of death from Centers for Medicare & Medicaid Services form 2746.

Analytical Approach: Discrete time hazards models were used to estimate hazards ratios per 1 µg/m³ greater annual average PM_{2.5}, adjusting for temperature, humidity, day of the week, season, age at baseline, race, employment status, and geographic region. Effect measure modification was assessed for age, sex, race, and baseline comorbidities.

Results: Each 1 µg/m³ greater annual average PM_{2.5} was associated with a greater rate of CV events (HR, 1.02 [95% CI, 1.01-1.02]) and CVD-specific mortality (HR, 1.02 [95% CI, 1.02-1.03]). The association was more pronounced for people who initiated dialysis at an older age, had chronic obstructive pulmonary disease (COPD) at baseline, or were Asian. Evidence of effect modification was also observed across strata of race, and other baseline comorbidities.

Limitations: Potential exposure misclassification and unmeasured confounding.

Conclusions: Long-term ambient PM_{2.5} exposure was associated with CVD outcomes among patients receiving maintenance in-center HD. Stronger associations between long-term PM_{2.5} exposure and adverse effects were observed among patients who were of advanced age, had COPD, or were Asian.

Visual Abstract online

Complete author and article information provided before references.

Correspondence to A.G. Rappold (rappold.ana@epa.gov)

Am J Kidney Dis. 80(5):648-657. Published online June 8, 2022.

doi: 10.1053/j.ajkd.2022.04.008

Published by Elsevier Inc. on behalf of the National Kidney Foundation, Inc. This is a US Government Work. There are no restrictions on its use. This is an open access article under the CC BY-NC-ND license (<http://creativecommons.org/licenses/by-nc-nd/4.0/>).

Particulate matter, 1 of the 6 National Ambient Air Quality Standards (NAAQS) criteria pollutants, has been linked to adverse health outcomes.¹ The latest Integrated Scientific Assessment for Particulate Matter concluded that evidence supports a causal relationship between long-term exposure to particulate matter with a diameter of 2.5 microns (PM_{2.5}) and cardiovascular disease (CVD).¹ Due to their fine size, inhaled PM_{2.5} particles can travel deep in the lungs and enter the circulatory system.² Toxicology studies in animals and controlled exposure in human volunteers have demonstrated inflammation (local and systemic) and autonomic nervous system activation, and epidemiologic studies have demonstrated associations between PM_{2.5} exposure and CVD, other morbidities, and mortality in the general population.³⁻⁶ However, the effects of long-term PM_{2.5} exposure among people who may be differentially susceptible to PM_{2.5}-associated health effects remains understudied.¹

Identifying specific populations who are particularly susceptible to the adverse health effects of pollution is a key step in reducing the public health burden of PM_{2.5} exposure. In the United States, individuals with kidney failure treated by maintenance in-center hemodialysis (HD) treatment are a large and growing, potentially susceptible population among whom the association of long-term PM_{2.5} on cardiovascular (CV) outcomes is unknown.⁷ Patients receiving maintenance HD are medically fragile and have high burdens of CVD. The relative risk of death due to CV events in HD patients is 20 times higher than that of the general population.⁸ HD patients also experience high mortality rates; the annual mortality rate was 16% in 2021 among US HD patients.⁷ Recent data suggest that short-term PM_{2.5} exposure is associated with adverse CV outcomes in HD patients,⁹⁻¹¹ but less is known about the association of long-term PM_{2.5} exposure and CV outcomes in this vulnerable population. To further evaluate the potential CV effect of long-term PM_{2.5}

PLAIN-LANGUAGE SUMMARY

Long-term exposure to air pollution, also called PM_{2.5}, has been linked to adverse cardiovascular outcomes. However, little is known about the association of PM_{2.5} and outcomes among patients receiving dialysis, who are individuals with high cardiovascular disease burdens. We conducted an epidemiological study to assess the association between the annual PM_{2.5} exposure and cardiovascular events and death among patients receiving regular outpatient hemodialysis in the United States between 2011 and 2016. We found a higher risk of heart attacks, strokes, and related events in patients exposed to higher levels of air pollution. Stronger associations between air pollution and adverse health events were observed among patients who were older at the start of dialysis, had chronic obstructive pulmonary disease, or were Asian. These findings bolster the evidence base linking air pollution and adverse health outcomes and may inform policy makers and clinicians.

exposure among HD patients, we conducted a retrospective open cohort study to investigate the association between long-term PM_{2.5} exposure and CV event and CVD-specific mortality among patients receiving in-center HD in the contiguous United States.

Methods

Study Setting and Study Population

We identified a retrospective cohort of maintenance HD patients from the US Renal Data System (USRDS), a claims-based national registry of patients with kidney failure that includes nearly all dialysis patients in the United States.⁷ We extracted baseline demographics, dialysis treatment, and comorbid medical characteristics for patients who initiated in-center HD treatment between January 1, 2011, and December 31, 2016, in the contiguous United States who had Medicare as their primary payer. Participants were followed from the fourth month of dialysis initiation (ie, time of Medicare coverage stability) until first diagnosis of CVD, change of kidney failure treatment modality (eg, peritoneal dialysis, kidney transplant), loss of Medicare coverage, death, or end of study follow-up (December 31, 2016). We excluded patients who were younger than 18 years old at dialysis initiation, initiated dialysis before January 1, 2011, did not have Medicare as primary payer, or did not survive the first 3 months of dialysis.

Exposure Assessment and Meteorological Data

ZIP code-level daily PM_{2.5} concentrations were estimated with a previously described prediction model.¹²⁻¹⁴ In brief, this model estimates daily PM_{2.5} on a 1 km grid for the entire contiguous United States by incorporating satellite

aerosol optical depth measurements, chemical transport model simulations, meteorology, land use, and other factors. Gridded PM_{2.5} estimates were then converted to population-weighted ZIP-level estimates using 2010 census tract population values. Long-term exposure was defined as the annual average of daily PM_{2.5} levels across the year before a particular day, which was calculated by averaging the daily PM_{2.5} concentrations across a 365-day period for each patient taking potential ZIP code-level change of location into account. Annual average of daily PM_{2.5} has been used widely to define long-term PM exposure in previous studies and as regulatory standard.^{15,16}

Daily temperature and relative humidity data were obtained from the US National Oceanic and Atmospheric Administration (NOAA). Specifically, daily temperature and relative humidity from weather station measurements were interpolated to census tract centroids and then averaged over tracts to ZIP codes.

Outcome Assessment

Follow-up to ascertain CV events and CVD-related deaths through December 31, 2016, was based on USRDS records. The outcomes of interest were CV events and CVD-specific mortality. The primary cause of death recorded in ESRD Death Notification Form (Centers for Medicare & Medicaid Services form 2746) was used to classify mortality into CVD-specific mortalities. We defined CV events as the first CVD-related emergency department (ED) visit, hospitalization, or mortality, whichever occurred first since the beginning of follow-up (recurrent CV events were not accounted for). *International Classification of Disease, 9th and 10th Revision (ICD-9 and ICD-10)* codes were used to identify cause-specific ED visits and hospitalization. In brief, any ED visit and hospitalization with a code indicating cerebrovascular, ischemic heart disease, hypertensive disease, heart failure, cardiac arrest, and related events were classified as CVD-related ED and hospital admission events. The cause of death codes and ICD codes used are summarized in [Table S1](#).

Data Linkage

We linked PM_{2.5} exposure to person-day records and meteorology variables based on date and ZIP code of the (last) dialysis clinic visited. More specifically, each person-day was linked to a 1 year average PM_{2.5} at the ZIP code of the dialysis clinic. To define exposure before dialysis initiation, we used annual average linked to the ZIP code of first available clinic. For each participant-day of follow-up, daily records of PM_{2.5} exposure were assigned based on the ZIP code of the dialysis clinic visited during that period of time. Patients typically visited a dialysis clinic every 2 or 3 days. For a date between claim-filing periods, with no information on clinic visits, the ZIP code of the last clinic visited was assigned (1.3% of the person-days in the mortality analysis had a ZIP code that was different from the previous person-day of the same individual).

Statistical Analysis

We used discrete time hazards models to assess the association between ZIP code-level long-term $PM_{2.5}$ exposure and CV events and CVD-specific mortality.¹⁷ The discrete time hazard is the probability of a case event at discrete time interval t , conditional on remaining event-free up to time $t - 1$. This approach, which has been widely used in occupational and environmental cohort studies,¹⁷⁻²⁰ is similar to a Poisson regression approach applied to a person-period data structure, which allows controlling for individual-level factors.¹⁷ We created 1 record per day for each participant in this study. Hazard ratios (HRs) per $1\text{-}\mu\text{g}/\text{m}^3$ greater $PM_{2.5}$, together with corresponding 95% confidence intervals were estimated. The detailed model specification can be found in [Item S1](#). For potential effect measure modifiers (age, sex, race, and baseline comorbidities; [Table S2](#)), we tested for the presence of heterogeneity of effect across different strata using the likelihood ratio test. Subsequently, we performed stratified analyses, reporting the effect estimates for each strata separately.

Sensitivity Analysis

To assess for potential variation of effect by duration of long-term $PM_{2.5}$ exposure and using analogous methods to the primary analyses, we examined the 6-month and 2-year averages of daily $PM_{2.5}$ in addition to the annual average. We also considered 2 other outcomes: an alternative specification of CV events that excluded hypertension-related diagnosis codes and, separately, all-cause mortality. Finally, we tested whether the observed associations for all 3 outcomes differ at levels above the NAAQS annual concentration threshold of $12\text{ }\mu\text{g}/\text{m}^3$.

The study protocol was reviewed and exempted by the institutional review board of the University of North Carolina on November 16, 2020 (Study 20-1469). Individual-level informed consent was not obtained as the health data were already collected at the time of study start.

Results

The final cohort included a total of 314,079 HD patients ([Fig S1](#)) with 193,121,928 person-days of follow-up in the mortality analyses (mean follow-up, 1.7 years) and 94,385,773 person-days in the CV event analysis (mean follow-up: 0.8 year). Between 2011 and 2016, there were 35,857 CVD-related mortalities (43.4% out of total all-cause mortality), and 208,113 patients experienced at least 1 CV event. [Table 1](#) displays the study population characteristics. More than half of the participants were older than 65 years of age at the initiation of HD. Approximately 44% of the study participants were female, and 52% were White. At HD initiation, more than half of the cohort had diabetes, about 60% had CVD, and 10% had chronic obstructive pulmonary disease (COPD).

The distribution of long-term ambient $PM_{2.5}$ concentrations varied across different ZIP areas ([Fig S2](#)). The median annual average ambient $PM_{2.5}$ for the mortality

analysis was 8.7 (IQR, 2.2) $\mu\text{g}/\text{m}^3$ ([Table 2](#)). For CV event analysis, the annual average $PM_{2.5}$ exposure distribution was nearly identical to that of the mortality analysis, with a median of 8.8 (IQR, 2.3) $\mu\text{g}/\text{m}^3$. The distributions of meteorology variables are presented in [Table S3](#).

Overall, greater long-term ambient $PM_{2.5}$ was associated with greater hazards of CV events and CVD-specific mortality ([Figs 1-3](#); [Table S4](#)). The associations were slightly higher when longer time windows were used to define the exposure, but the 95% confidence intervals were overlapping; therefore, the long-term associations were robust against different long-term exposure definitions assessed ([Fig 1](#)). The annual average $PM_{2.5}$ was reported as the primary exposure of interest for the robustness of association regardless of average time window. The hazard ratios (HR) associated with $1\text{ }\mu\text{g}/\text{m}^3$ greater annual average $PM_{2.5}$ for CV events and CVD-specific mortality were 1.02 (95% CI, 1.01 - 1.02) and 1.02 (95% CI, 1.02 - 1.03), respectively ([Fig 1](#)). We did not observe evidence for differential association estimates at concentrations above the NAAQS ($12\text{ }\mu\text{g}/\text{m}^3$) for all 3 outcomes. Findings were consistent in analyses considering the alternative specification of CV events and all-cause mortality ([Table S4](#), [Table S5](#)).

For CV events, the association was relatively higher among HD patients who started dialysis in the oldest age group (≥ 75 years), those who were White, and followed by those who were Asian and those with COPD at dialysis initiation ([Fig 2](#)). For every $1\text{ }\mu\text{g}/\text{m}^3$ greater annual average $PM_{2.5}$, an HR of 1.02 (95% CI, 1.02 - 1.03) was observed among HD patients who initiated dialysis at the age of 75 or older ([Fig 2](#)). For HD patients who reported to have COPD at dialysis initiation, an HR of 1.02 (95% CI, 1.02 - 1.03) was estimated ([Fig 2](#)). Among different race ethnicity groups, the HR estimate was highest for White (HR, 1.02 [95% CI, 1.02 - 1.02]) followed by Asian (HR, 1.01 [95% CI, 1.00 - 1.03]) individuals. The likelihood ratio test for homogeneity also suggested the associations on CV event were not similar across different levels of dialysis initiating age, sex, race ethnicity, and baseline COPD status ([Fig 2](#)).

For CVD-specific mortality, HD patients who started dialysis in the oldest age group, were Asian, and did not have diabetes or had COPD at dialysis initiation experienced a relatively higher $PM_{2.5}$ -related association compared with other groups ([Fig 3](#)). The highest HR (1.06 [95% CI, 1.03 - 1.10]) per every $1\text{ }\mu\text{g}/\text{m}^3$ greater annual average $PM_{2.5}$ was observed among HD patients who were Asian ([Fig 3](#)). For HD patients who were 75 or older at dialysis initiation, the HR was 1.04 (95% CI, 1.03 - 1.05) ([Fig 3](#)). For HD patients who reported having COPD at dialysis initiation, an HR of 1.03 (95% CI, 1.01 - 1.04) was estimated ([Fig 2](#)). The likelihood ratio test for homogeneity also suggested the association on CVD-specific mortality is not similar across different levels of dialysis-initiating age, race, baseline diabetes status, and baseline COPD status ([Fig 3](#)).

Table 1. Study Population Baseline Characteristics Overall and by Outcomes of Interest

Characteristics	Total	CVD-Specific Mortality	CV Event
No. of patients	314,079	35,857	208,113
Person-days	193,121,928	193,121,928	94,385,773
Age at HD initiation, y	63.6 ± 14.6	69.4 ± 13.2	65.4 ± 14.0
Age at HD initiation			
18-44 y	34,191 (10.9%)	1,808 (5.0%)	17,019 (8.2%)
45-64 y	119,140 (37.9%)	10,759 (30.0%)	74,068 (35.6%)
65-74 y	81,741 (26.0%)	10,280 (28.7%)	57,125 (27.5%)
75 y and older	79,007 (25.2%)	13,010 (36.3%)	59,901 (28.8%)
Follow-up time, y	1.7 ± 1.4	1.5 ± 1.2	0.7 ± 0.8
Follow-up time			
<1 y	132,344 (42.1%)	16,505 (46.0%)	163,151 (78.4%)
1-2 y	73,099 (23.3%)	9,116 (25.4%)	29,250 (14.1%)
2-3 y	48,238 (15.4%)	5,491 (15.3%)	10,277 (4.9%)
3-4 y	31,401 (10.2%)	3,106 (8.7%)	3,867 (1.9%)
>4 y	28,997 (9.2%)	1,639 (4.6%)	1,568 (0.8%)
BMI, kg/m ²	29.9 ± 8.1	29.3 ± 8.0	29.8 ± 8.2
Female sex	131,209 (43.9%)	15,244 (42.5%)	93,832 (45.1%)
Race ethnicity			
American Indian/Alaskan Native	3,540 (1.1%)	352 (1.0%)	2,181 (1.0%)
Asian	10,003 (3.2%)	1,032 (2.9%)	6,142 (3.0%)
Black	91,057 (29.0%)	8,835 (24.6%)	59,604 (28.6%)
Hispanic	40,957 (13.0%)	3,911 (10.9%)	25,207 (12.1%)
Pacific Islander	2,037 (0.7%)	190 (0.5%)	1,189 (0.6%)
White	163,338 (52.0%)	21,322 (59.5%)	111,852 (53.7%)
Other	3,147 (1.0%)	215 (0.6%)	1,938 (0.9%)
Reported cause of kidney failure			
Diabetes	152,106 (48.4%)	18,734 (52.3%)	105,544 (50.7%)
Glomerulonephritis	20,846 (6.6%)	1,368 (3.8%)	11,351 (5.5%)
Hypertension	97,204 (31.0%)	11,530 (32.2%)	64,554 (31.0%)
Other	43,923 (14.0%)	4,225 (11.8%)	26,664 (12.8%)
Access type			
AVF	54,008 (18.1%)	4,937 (13.8%)	32,914 (15.8%)
Graft	9,527 (3.2%)	1,070 (3.0%)	6,543 (3.1%)
Catheter	235,042 (78.6%)	28,782 (80.3%)	159,809 (76.8%)
Other	496 (0.2%)	61 (0.2%)	327 (0.2%)
Baseline comorbidities			
CVD	160,760 (53.8%)	24,218 (67.5%)	123,121 (59.2%)
COPD	30,417 (10.2%)	5,220 (14.6%)	24,067 (11.6%)
Diabetes mellitus	178,489 (59.7%)	22,728 (63.4%)	128,114 (61.6%)
Geographic region			
Northeast	68,668 (21.9%)	8,831 (24.6%)	47,707 (22.9%)
Midwest	59,243 (19.9%)	6,033 (17.1%)	39,405 (18.9%)
West	40,001 (12.7%)	4,146 (11.6%)	24,398 (11.7%)
South	146,167 (46.5%)	16,847 (47.0%)	96,603 (46.4%)
Baseline employment status			
Employed	30,746 (9.8%)	2,082 (5.8%)	15,655 (7.5%)
Retired	196,525 (62.6%)	26,353 (73.5%)	139,909 (67.2%)
Unemployed	76,338 (24.3%)	6,793 (19.0%)	47,033 (22.6%)
Other	10,470 (3.3%)	629 (1.8%)	5,516 (2.7%)

Values for continuous variables given as mean ± SD. Abbreviations: AVF, arteriovenous fistula; BMI, body mass index; COPD, chronic obstructive pulmonary disease; CV, cardiovascular; CVD, cardiovascular disease; HD, hemodialysis.

Discussion

We estimated the associations of long-term PM_{2.5} exposure with CV events and CVD-specific mortality among US HD

patients between 2011 and 2016. Long-term PM_{2.5} exposure was associated with higher hazards for both studied outcomes in this vulnerable population. The hazard of a CV event was greater by 2% for every 1 μg/m³

Table 2. ZIP Code–Level Long-term PM_{2.5} Concentrations in Mortality and CV Event Analyses

	Mean ± SD	Range	Median (Q1-Q3)
Mortality Analysis (n = 193,121,928 Person-Days)			
Annual average PM _{2.5} , µg/m ³	8.7 ± 1.8	0.9-21.3	8.7 (7.6-9.8)
6-month average PM _{2.5} , µg/m ³	8.6 ± 2.0	0.8-31.6	8.5 (7.4-9.8)
2-year average PM _{2.5} , µg/m ³	8.9 ± 1.8	1.3-20.4	9.0 (7.9-10.0)
CV Event Analysis (n = 94,385,773 Person-Days)			
Annual average	8.7 ± 1.9	0.9-21.3	8.8 (7.6-9.9)
6-month average	8.6 ± 2.1	0.8-31.6	8.6 (7.4-9.8)
2-year average	9.0 ± 1.8	1.3-20.4	9.0 (7.9-10.0)

Abbreviations: CV, cardiovascular; PM_{2.5}, particulate matter with a diameter of 2.5 microns; Q, quartile.

greater annual average PM_{2.5}; the same value was obtained for the association with CVD-specific mortality. We also observed relatively higher PM_{2.5} hazards among HD patients who initiated dialysis at an older age, who had COPD at dialysis initiation, and who were Asian.

Epidemiological studies have linked long-term PM_{2.5} exposure to CV outcomes. Currently, there are 3 hypotheses regarding the mechanisms of PM exposure’s biological effect.²¹ The first 2 hypotheses posit that PM_{2.5} inhalation activates systemic inflammation in the lung and other target tissues via direct entry into the circulation.²²⁻²⁵ The third hypothesis posits that inhaled particulate matter activates sensory receptors in the lung, leading to imbalance of the autonomic nervous system and subsequent increases in catecholamines.²²⁻²⁵ Both elevated catecholamines and systemic inflammation can contribute to the development of atherosclerosis, thrombosis, endothelial dysfunction, alteration in heart rate, vasoconstriction, and elevated blood pressure—preclinical precursors to CV outcomes such as the ones observed in this analysis.²²⁻²⁵

Our findings add to the emerging evidence regarding the association between PM_{2.5} exposure and outcomes among HD patients and are consistent with previous results in this population. Wyatt et al⁹ reported a 0.9% (95% CI, 0.4%-1.8%) increase in hospital admission risk for CV causes was associated with same-day PM_{2.5} exposure in the United States. A recent study by Feng et al²⁶ observed mortality risk elevation with long-term PM_{2.5} exposure. For CVD mortality, they reported a similar HR (1.38 [95% CI, 1.21-1.58] per 10 µg/m³ greater annual average PM_{2.5} above 12 µg/m³).²⁶ Another recent study among patients with kidney failure in Hong Kong also observed an association between PM_{2.5} exposure and mortality.²⁷ These findings, bolstered by the results of our study, support the conclusion that long-term exposure to particulate matter, even when at relatively low levels, is associated with higher risks of CVD and mortality among HD patients.

However, it was unexpected that the association size observed for CV events was lower than that of CVD-specific mortality (1.6% vs 2.2% greater HRs, albeit with

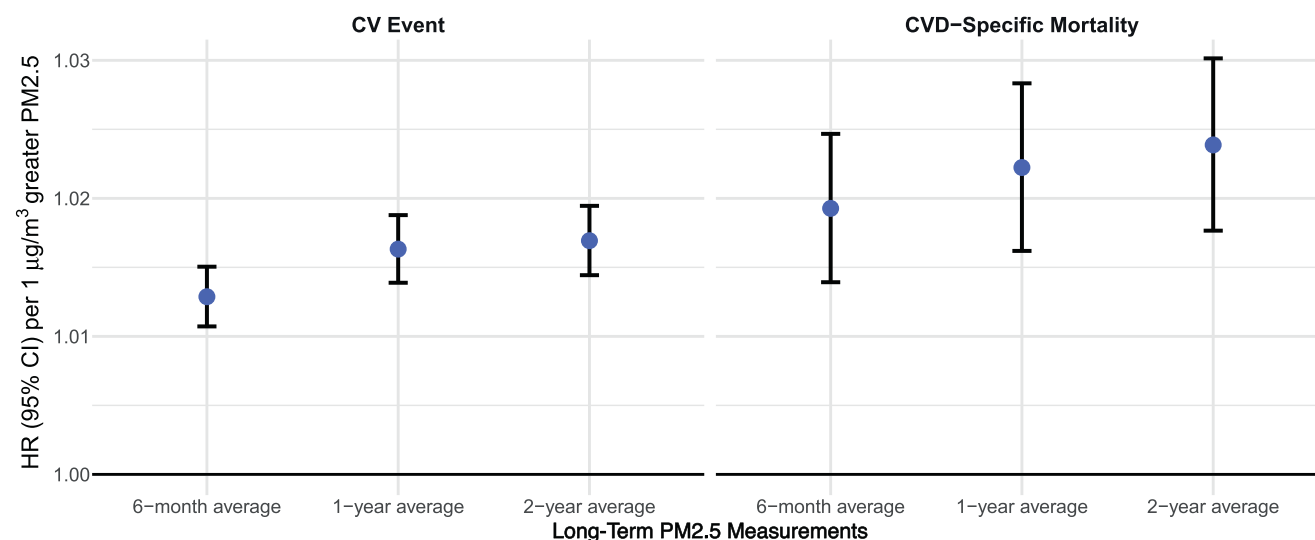


Figure 1. Association of long-term ambient PM_{2.5} exposures on CV event and CVD-specific mortality among HD patients, 2011-2016. All effect estimates reported here (given as HR and 95% CI) were obtained from models that adjusted for time since dialysis initiation, temperature, relative humidity, day of the week (DOW), season, age at dialysis initiation, race ethnicity, employment status at dialysis initiation, and geographic region (Northeast, Midwest, South, and West) at dialysis initiation. Abbreviations: CV, cardiovascular; CVD, cardiovascular disease; PM_{2.5}, particulate matter with a diameter of 2.5 microns.

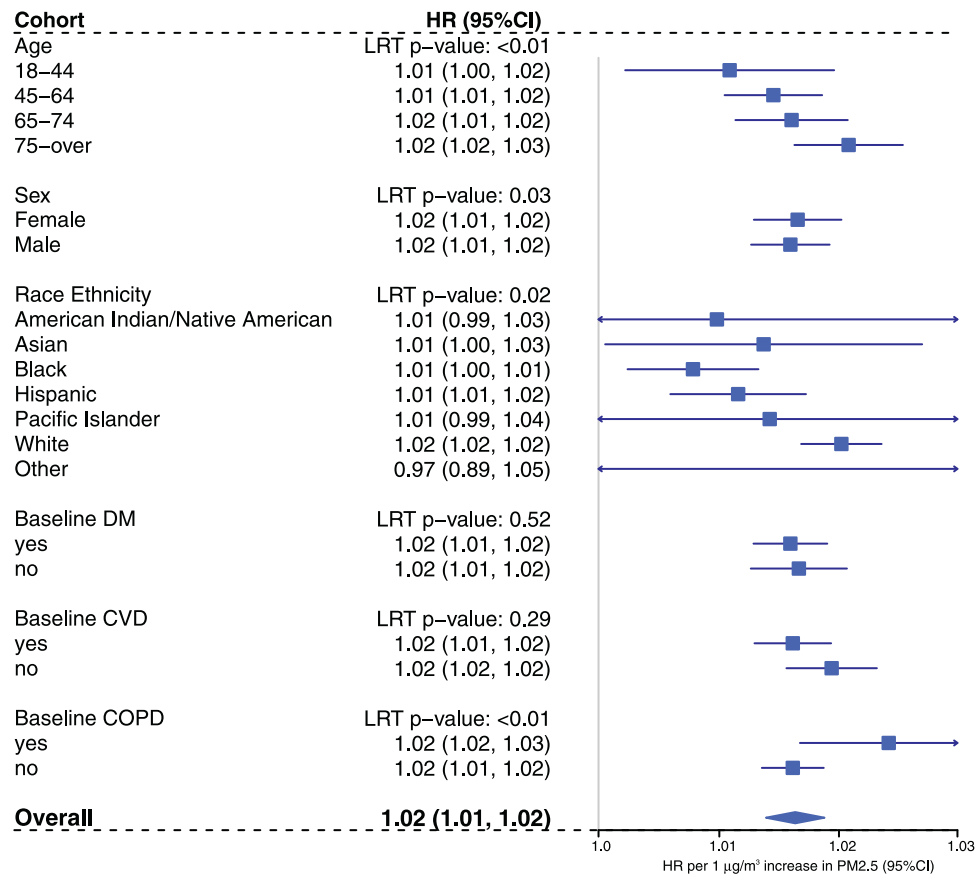


Figure 2. CV event stratification analysis by age at dialysis initiation, sex, race, vascular access type, and comorbidity status at dialysis initiation. Estimates (HRs per 1 µg/m₃ greater PM_{2.5}) of association between annual average PM_{2.5} exposure and first CV event since dialysis initiation among HD patients, 2011-2016. Effect estimates reported for age at dialysis initiation groups were adjusted for temperature, relative humidity, DOW, season, race ethnicity, employment status, and geographic region. Effect estimates reported for race ethnicity groups were adjusted for temperature, relative humidity, DOW, season, age at dialysis initiation, employment status, and geographic region. The rest estimates were obtained from models that adjusted for temperature, relative humidity, DOW, season, age at dialysis initiation, race ethnicity, employment status, and geographic region. Abbreviations: COPD, chronic obstructive pulmonary disease; CV, cardiovascular; CVD, cardiovascular disease; DM, diabetes mellitus; DOW, day of the week; HR, hazard ratio; LRT, likelihood ratio test; PM_{2.5}, particulate matter with a diameter of 2.5 microns.

overlapping confidence intervals) because it is logical that individuals would develop an incident CV event before their death. This could be due to the use of different diagnosis coding algorithms used to define CVD-specific mortality versus CV event, a high CVD prevalence within this cohort, or the plausible impact of long-term PM_{2.5} exposure on CVD case fatality rates.

Our findings also suggest larger magnitudes of association between long-term PM_{2.5} exposure and health outcomes among patients who initiated dialysis treatment at an older age, had COPD at dialysis initiation, were not diabetic at dialysis initiation, and were Asian. The observed age-related effect modification may be explained by the higher prevalence of pre-existing conditions and higher baseline mortality risk in the older age group. Feng et al²⁶ also observed a higher long-term PM_{2.5} exposure effect on all-cause mortality among older dialysis initiators.

The PM_{2.5}-outcome association was also larger among patients with COPD (vs without). This finding is not surprising because COPD contributes to compromised respiratory function and underlying pulmonary inflammation, potentially increasing susceptibility to air pollution.^{28,29} Yet previous studies have yielded inconsistent results in this regard, and more population-specific studies are needed.²⁸⁻³²

We also found higher hazards for CVD-specific mortality among patients without diabetes at dialysis initiation. This differential association by baseline diabetes status on mortality could be potentially explained by the fact that more patients with diabetes (50.4% vs 46.5%) initiated dialysis at a younger age (before 65) (Table S6). To our knowledge, no study has assessed the long-term PM_{2.5} effect by baseline diabetes status among dialysis patients. Studies among the general population yield mixed or nonsignificant results.^{1,33-35}

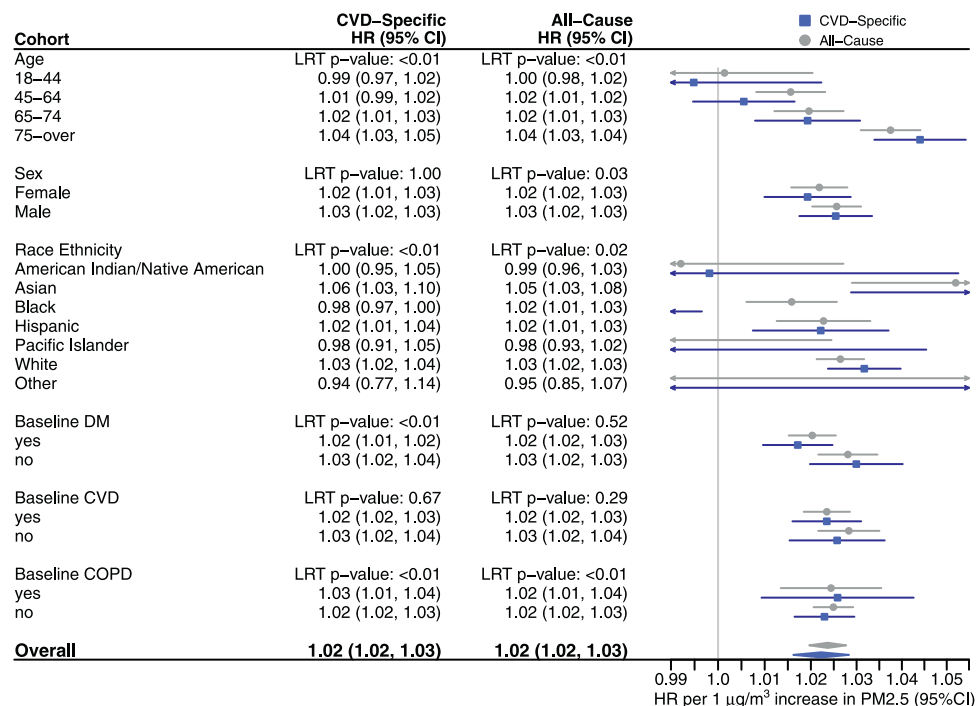


Figure 3. CVD-specific and all-cause mortality stratification analysis by age at dialysis initiation, sex, race, vascular access type, and comorbidity status at dialysis initiation. Estimates (HRs per 1 µg/m³ greater PM_{2.5}) of association between annual average PM_{2.5} exposure and CVD-specific and all-cause mortality among HD patients, 2011-2016. Effect estimates reported for age at dialysis initiation groups were adjusted for temperature, relative humidity, DOW, season, race ethnicity, employment status, and geographic region. Effect estimates reported for race ethnicity groups were adjusted for temperature, relative humidity, DOW, season, age at dialysis initiation, employment status, and geographic region. The rest estimates were obtained from models that adjusted for temperature, relative humidity, DOW, season, age at dialysis initiation, race ethnicity, employment status, and geographic region. Abbreviations: COPD, chronic obstructive pulmonary disease; CVD, cardiovascular disease; DM, diabetes mellitus; DOW, day of the week; HD, hemodialysis; HR, hazard ratio; LRT, likelihood ratio test; PM_{2.5}, particulate matter with a diameter of 2.5 microns.

Finally, we observed a higher PM_{2.5} association on CVD-specific mortality among Asians. This difference could be potentially explained by differences in age distribution by race (Table S6) and exposure levels.³⁶ Studies in the general or other populations have also reported mixed results on race stratification for PM effects.¹ Thus, it is not conclusive to determine if and how race and ethnicity modifies the long-term PM effect among dialysis patients.

This study had several strengths. First, the USRDS database is highly representative of US HD patients, with a nearly complete inclusion of those who initiated in-center HD between 2011 and 2016. Second, linkage of the PM_{2.5} concentrations using the dialysis treatment date and ZIP code of the dialysis clinic visited enabled the best exposure classification we can achieve with the available data. It has been reported that patients in the USRDS cohort who received maintenance in-center dialysis travel a median distance of 5.7 miles from their homes to dialysis clinics.^{37,38} In our study population, more than half of the included patients had at least 1 ZIP code-level change of location during follow-up. Thus, it is necessary to take location changes into account for exposure linkage to avoid potential exposure misclassification. Third, the ZIP

code-level daily PM_{2.5} concentrations were estimated with a sophisticated model of high spatial and temporal resolution with proven accuracy.^{12,39} Last, the use of discrete time hazards models allowed for controlling for individual-level time invariant factors together with time-varying factors to better estimate the health risk associated with fluctuation in ambient PM_{2.5}.

This study also had some limitations. First, exposure misclassification is often a concern in environmental exposure studies because the individual-level exposure measurement is not available. Instead, the assumption is made that the average exposure is similar across patients within the same ZIP code area and that the degree of exposure misclassification does not vary simultaneously with daily variation in ZIP code-level exposure and health risk. Furthermore, PM_{2.5} is generally considered and regulated as a regional pollutant, and the modeled exposure is currently considered the best available exposure surface.^{39,40}

Second, in this analysis socioeconomic status (SES) was classified based on employment status at dialysis initiation. For our dataset, it was the only available proxy of SES, yet it could lead to inaccurate classification of SES. Future study should identify additional sources of information and/or

collect information for individual SES classification (eg, income, education) to better understand its potential confounding or modification effect.

Third, there are other potential effect measure modifiers that were not able to be assessed in this analysis. For example, the information of urbanicity is lacking, which should be collected and assessed in future studies. Also, future study should assess geographic region-specific effects. Furthermore, the composite definition of CV events, which included hypertension, although consistent with environmental literature definitions, may have limitations in regard to clinical interpretation. Reassuringly, the analyses considering an alternative CV event definition excluding hypertension yielded consistent findings. Finally, for all observational studies there is the possibility of unmeasured confounding, and in the presence of unmeasured confounding, our estimates should not be interpreted as causal.

In conclusion, in this large retrospective open cohort study, we found evidence of associations between long-term ambient PM_{2.5} exposure and CVD outcomes among patients receiving maintenance in-center HD. The annual average ZIP code-level PM_{2.5} for the majority of the included person-days in this analysis (75th percentile: 9.8 µg/m³) was below the current NAAQS regulatory standard of 12 µg/m³. However, the PM concentration in many highly populated urban areas still exceeds the NAAQS standard, and extreme events like wildfires also lead to high-level exposures despite the fact that the national level ambient PM_{2.5} concentration has decreased 39% between 2000 and 2018.⁴¹ Our findings suggest that exposure mitigation on the individual level could be beneficial to at-risk individuals. Future studies should be conducted to study the potential health impact of additional air pollutants (ozone, NO_x, etc) among such vulnerable populations.

Supplementary Material

Supplementary File (PDF)

Figure S1: Distribution of ZIP code-level study population size 2011-2016.

Figure S2: Distribution of ZIP code-level average-annual PM_{2.5} 2011-2016.

Item S1: Model specification.

Table S1: Cause of death and ICD codes used to identify CV events.

Table S2: Baseline comorbidity status classification.

Table S3: ZIP code-level daily meteorological variables distribution.

Table S4: Association between annual average PM_{2.5} exposure and all-cause mortality among HD patients, 2011-2016.

Table S5: CV event specification sensitivity analysis.

Table S6: Distribution of age at dialysis initiation by potential modifiers.

Article Information

Authors' Full Names and Academic Degrees: Yuzhi Xi, PhD, David B. Richardson, PhD, Abhijit V. Kshirsagar, MD, MPH, Timothy J.

Wade, PhD, Jennifer E. Flythe, MD, MPH, Eric A. Whitsel, MD, and Ana G. Rappold, PhD.

Authors' Affiliations: Oak Ridge Institute for Science and Education (YX), Center for Public Health and Environmental Assessment (TJW, AGR), United States Environmental Protection Agency, Research Triangle Park, North Carolina; Department of Epidemiology, Gillings School of Global Public Health (YX, DBR, EAW), University of North Carolina Kidney Center, Division of Nephrology and Hypertension (AVK, JEF), and Department of Medicine, School of Medicine (AVK, JEF, EAW), University of North Carolina, Chapel Hill, North Carolina.

Address for Correspondence: Ana G. Rappold, PhD, Center for Public Health and Environmental Assessment, Office of Research and Development, US Environmental Protection Agency, 109 T.W. Alexander Dr, Research Triangle Park, NC 27711. Email: rappold.ana@epa.gov

Authors' Contributions: Research idea and study design: YX, DBR, AGR, EAW, TJW; data acquisition: AVK, JEF, AGR; data management/processing: YX; statistical analysis: YX, DBR, AGR; mentorship: DBR, AGR. Each author contributed important intellectual content during manuscript drafting or revision and agrees to be personally accountable for the individual's own contributions and to ensure that questions pertaining to the accuracy or integrity of any portion of the work, even one in which the author was not directly involved, are appropriately investigated and resolved, including with documentation in the literature if appropriate.

Support: Dr Flythe is supported by R01 HL152034 awarded by the National Heart, Lung, and Blood Institute of the National Institutes of Health.

Financial Disclosure: Dr Flythe has received speaking honoraria from the American Society of Nephrology and multiple universities, as well as investigator-initiated research funding unrelated to this project from the Renal Research Institute, a subsidiary of Fresenius Kidney Care, North America; serves on a medical advisory board for Fresenius Kidney Care, North America as well as a scientific advisory board and Data and Safety Monitoring Committee for NIDDK; and has received consulting fees from Fresenius Kidney Care, North America and AstraZeneca. The other authors declare that they have no relevant financial interests.

Acknowledgements: We thank Dr Lily Wang for providing programming code to extract data from USRDS claims. We thank Dr Geoffrey C. Peterson for processing and providing exposure and meteorology datafiles.

Disclaimer: The data reported here have been supplied by the USRDS. The interpretation and reporting of these data are the responsibility of the authors and in no way should be seen as an official policy or interpretation of the US government. The views expressed in the manuscript do not necessarily reflect the views or policies of the US Environmental Protection Agency.

Peer Review: Received October 5, 2021. Evaluated by 2 external peer reviewers, with direct editorial input from a Statistics/Methods Editor, an Associate Editor, and the Editor-in-Chief. Accepted in revised form April 15, 2022.







References

1. US Environmental Protection Agency. 600 Integrated Science Assessment (ISA) for Particulate Matter. Final Report, December 2019. EPA/600/R-19/188. US EPA; 2019. <https://cfpub.epa.gov/ncea/isa/recordisplay.cfm?deid=347534>
2. Wold LE, Simkhovich BZ, Kleinman MT, et al. In vivo and in vitro models to test the hypothesis of particle-induced effects on

- cardiac function and arrhythmias. *Cardiovasc Toxicol*. 2006;6(1):69-78. doi:10.1385/ct:6:1:69
3. Aztatzi-Aguilar OG, Uribe-Ramirez M, Arias-Montañó JA, Barbier O, De Vizcaya-Ruiz A. Acute and subchronic exposure to air particulate matter induces expression of angiotensin and bradykinin-related genes in the lungs and heart: angiotensin-II type-I receptor as a molecular target of particulate matter exposure. *Part Fibre Toxicol*. 2015;12:17. doi:10.1186/s12989-015-0094-4
 4. Hajat A, Allison M, Diez-Roux AV, et al. Long-term exposure to air pollution and markers of inflammation, coagulation, and endothelial activation: a repeat-measures analysis in the Multi-Ethnic Study of Atherosclerosis (MESA). *Epidemiology*. 2015;26(3):310-320. doi:10.1097/ede.0000000000000267
 5. Kampfrath T, Maiseyue A, Ying Z, et al. Chronic fine particulate matter exposure induces systemic vascular dysfunction via NADPH oxidase and TLR4 pathways. *Circ Res*. 2011;108(6):716-726. doi:10.1161/circresaha.110.237560
 6. Tanwar V, Gorr MW, Velten M, et al. In utero particulate matter exposure produces heart failure, electrical remodeling, and epigenetic changes at adulthood. *J Am Heart Assoc*. 2017;6(4):e005796. doi:10.1161/jaha.117.005796
 7. Johansen KL, Chertow GM, Gilbertson DT, et al. US Renal Data System 2021 annual data report: epidemiology of kidney disease in the United States. *Am J Kidney Dis*. 2022;79(4)(suppl 1):A8-A12. doi:10.1053/j.ajkd.2022.02.001
 8. Cozzolino M, Mangano M, Stucchi A, Ciceri P, Conte F, Galassi A. Cardiovascular disease in dialysis patients. *Nephrol Dial Transplant*. 2018;33(suppl 3):iii28-iii34. doi:10.1093/ndt/gfy174
 9. Wyatt LH, Xi Y, Kshirsagar A, et al. Association of short-term exposure to ambient PM_{2.5} with hospital admissions and 30-day readmissions in end-stage renal disease patients: population-based retrospective cohort study. *BMJ Open*. 2020;10(12):e041177. doi:10.1136/bmjopen-2020-041177
 10. Xi Y, Kshirsagar AV, Wade TJ, et al. Mortality in US hemodialysis patients following exposure to wildfire smoke. *J Am Soc Nephrol*. 2020;31(8):1824-1835. doi:10.1681/asn.2019101066
 11. Xi Y, Richardson DB, Kshirsagar AV, et al. Effects of short-term ambient PM_{2.5} exposure on cardiovascular disease incidence and mortality among U.S. hemodialysis patients: a retrospective cohort study. *Environ Health*. 2022;21(1):33. doi:10.1186/s12940-022-00836-0
 12. Di Q, Kloog I, Koutrakis P, Lyapustin A, Wang Y, Schwartz J. Assessing PM_{2.5} exposures with high spatiotemporal resolution across the continental United States. *Environ Sci Technol*. 2016;50(9):4712-4721. doi:10.1021/acs.est.5b06121
 13. Di Q, Rowland S, Koutrakis P, Schwartz J. A hybrid model for spatially and temporally resolved ozone exposures in the continental United States. *J Air Waste Manag Assoc*. 2017;67(1):39-52. doi:10.1080/10962247.2016.1200159
 14. Makar M, Antonelli J, Di Q, Cutler D, Schwartz J, Dominici F. Estimating the causal effect of low levels of fine particulate matter on hospitalization. *Epidemiology*. 2017;28(5):627-634. doi:10.1097/ede.0000000000000690
 15. Vodonos A, Awad YA, Schwartz J. The concentration-response between long-term PM_{2.5} exposure and mortality; a meta-regression approach. *Environ Res*. 2018;166:677-689. doi:10.1016/j.envres.2018.06.021
 16. Wang Y, Shi L, Lee M, et al. Long-term exposure to PM_{2.5} and mortality among older adults in the southeastern US. *Epidemiology*. 2017;28(2):207-214. doi:10.1097/ede.0000000000000614
 17. Chang HH, Reich BJ, Miranda ML. A spatial time-to-event approach for estimating associations between air pollution and preterm birth. *J R Stat Soc Ser C Appl Stat*. 2013;62(2):167-179. doi:10.1111/j.1467-9876.2012.01056.x
 18. Gaskins AJ, Fong KC, Abu Awad Y, et al. Time-varying exposure to air pollution and outcomes of in vitro fertilization among couples from a fertility clinic. *Environ Health Perspect*. 2019;127(7):77002. doi:10.1289/ehp4601
 19. Peters A, von Klot S, Berglind N, et al. Comparison of different methods in analyzing short-term air pollution effects in a cohort study of susceptible individuals. *Epidemiol Perspect Innov*. 2006;3:10. doi:10.1186/1742-5573-3-10
 20. Richardson DB. Discrete time hazards models for occupational and environmental cohort analyses. *Occup Environ Med*. 2010;67(1):67-71. doi:10.1136/oem.2008.044834
 21. Hamanaka RB, Mutlu GM. Particulate matter air pollution: effects on the cardiovascular system. *Front Endocrinol (Lausanne)*. 2018;9:680. doi:10.3389/fendo.2018.00680
 22. Brook RD, Rajagopalan S, Pope CA, 3rd, et al. Particulate matter air pollution and cardiovascular disease: an update to the scientific statement from the American Heart Association. *Circulation*. 2010;121(21):2331-2378. doi:10.1161/CIR.0b013e3181d8bec1
 23. Chin MT. Basic mechanisms for adverse cardiovascular events associated with air pollution. *Heart*. 2015;101(4):253-256. doi:10.1136/heartjnl-2014-306379
 24. Cosselman KE, Navas-Acien A, Kaufman JD. Environmental factors in cardiovascular disease. *Nat Rev Cardiol*. 2015;12(11):627-642. doi:10.1038/nrcardio.2015.152
 25. Franklin BA, Brook R, Arden Pope C, 3rd. Air pollution and cardiovascular disease. *Curr Probl Cardiol*. 2015;40(5):207-238. doi:10.1016/j.cpcardiol.2015.01.003
 26. Feng Y, Jones MR, Chu NM, Segev DL, McAdams-DeMarco M. Ambient air pollution and mortality among older patients initiating maintenance dialysis. *Am J Nephrol*. 2021;52(3):217-227. doi:10.1159/000514233
 27. Ran J, Sun S, Han L, et al. Fine particulate matter and cause-specific mortality in the Hong Kong elder patients with chronic kidney disease. *Chemosphere*. 2020;247:125913. doi:10.1016/j.chemosphere.2020.125913
 28. Alexeeff SE, Deosaransingh K, Liao NS, Van Den Eeden SK, Schwartz J, Sidney S. Particulate matter and cardiovascular risk in adults with chronic obstructive pulmonary disease. *Am J Respir Crit Care Med*. 2021;204(2):159-167. doi:10.1164/rccm.202007-2901OC
 29. Tilert T, Dillon C, Paulose-Ram R, Hnizdo E, Doney B. Estimating the U.S. prevalence of chronic obstructive pulmonary disease using pre- and post-bronchodilator spirometry: the National Health and Nutrition Examination Survey (NHANES) 2007-2010. *Respir Res*. 2013;14(1):103. doi:10.1186/1465-9921-14-103
 30. Belleudi V, Faustini A, Stafoggia M, et al. Impact of fine and ultrafine particles on emergency hospital admissions for cardiac and respiratory diseases. *Epidemiology*. 2010;21(3):414-423. doi:10.1097/EDE.0b013e3181d5c021
 31. Bunch TJ, Horne BD, Asirvatham SJ, et al. Atrial fibrillation hospitalization is not increased with short-term elevations in exposure to fine particulate air pollution. *Pacing Clin Electrophysiol*. 2011;34(11):1475-1479. doi:10.1111/j.1540-8159.2011.03200.x
 32. Chen H, Burnett RT, Kwong JC, et al. Spatial association between ambient fine particulate matter and incident hypertension. *Circulation*. 2014;129(5):562-569. doi:10.1161/circulationaha.113.003532

33. Goldberg MS, Burnett RT, Stieb DM, et al. Associations between ambient air pollution and daily mortality among elderly persons in Montreal, Quebec. *Sci Total Environ*. 2013;463-464:931-942. doi:10.1016/j.scitotenv.2013.06.095
34. Goldberg MS, Burnett RT, Yale JF, Valois MF, Brook JR. Associations between ambient air pollution and daily mortality among persons with diabetes and cardiovascular disease. *Environ Res*. 2006;100(2):255-267. doi:10.1016/j.envres.2005.04.007
35. Zanobetti A, Dominici F, Wang Y, Schwartz JD. A national case-crossover analysis of the short-term effect of PM2.5 on hospitalizations and mortality in subjects with diabetes and neurological disorders. *Environ Health*. 2014;13(1):38. doi:10.1186/1476-069x-13-38
36. Yan G, Norris KC, Yu AJ, et al. The relationship of age, race, and ethnicity with survival in dialysis patients. *Clin J Am Soc Nephrol*. 2013;8(6):953-961. doi:10.2215/cjn.09180912
37. Prakash S, Coffin R, Schold J, et al. Travel distance and home dialysis rates in the United States. *Perit Dial Int*. 2014;34(1):24-32. doi:10.3747/pdi.2012.00234
38. Stephens JM, Brotherton S, Dunning SC, et al. Geographic disparities in patient travel for dialysis in the United States. *J Rural Health*. 2013;29(4):339-348. doi:10.1111/jrh.12022
39. Di Q, Wang Y, Zanobetti A, et al. Air pollution and mortality in the Medicare population. *N Engl J Med*. 2017;376(26):2513-2522. doi:10.1056/NEJMoa1702747
40. Di Q, Dai L, Wang Y, et al. Association of short-term exposure to air pollution with mortality in older adults. *JAMA*. 2017;318(24):2446-2456. doi:10.1001/jama.2017.17923
41. McClure CD, Jaffe DA. US particulate matter air quality improves except in wildfire-prone areas. *Proc Natl Acad Sci USA*. 2018;115(31):7901-7906. doi:10.1073/pnas.1804353115

Long-Term Ambient PM_{2.5} Exposure and Cardiovascular Outcomes Among US Patients on Hemodialysis

Setting & Participants	Methods	Key Findings						
 Retrospective Cohort Study  N = 314,079 <ul style="list-style-type: none"> • 51% aged ≥ 65 years • Initiated in-center HD between 2011-2016 • Identified from USRDS 	Exposure:  Annual-average PM _{2.5} by ZIP code of dialysis clinic  <i>Median annual-average PM_{2.5}: 8.7 µg/m³</i> Outcomes:  CV event (over mean F/U of 0.8 y)  CVD-specific mortality (over mean F/U of 1.7 y)	<table style="width: 100%; border-collapse: collapse;"> <thead> <tr style="background-color: #fff9c4;"> <th colspan="2" style="text-align: center; padding: 5px;">HR (95% CI) per 1 µg/m³ greater annual-average PM_{2.5}</th> </tr> </thead> <tbody> <tr> <td style="padding: 5px;">CV event</td> <td style="text-align: right; padding: 5px;">1.02 (1.01-1.02)</td> </tr> <tr> <td style="padding: 5px;">CVD-specific mortality</td> <td style="text-align: right; padding: 5px;">1.02 (1.02-1.03)</td> </tr> </tbody> </table> <p style="margin-top: 10px;">Association was more pronounced for:</p> <ul style="list-style-type: none"> • Patients who initiated dialysis at older age • Asian population • Patients with COPD at baseline 	HR (95% CI) per 1 µg/m ³ greater annual-average PM _{2.5}		CV event	1.02 (1.01-1.02)	CVD-specific mortality	1.02 (1.02-1.03)
HR (95% CI) per 1 µg/m ³ greater annual-average PM _{2.5}								
CV event	1.02 (1.01-1.02)							
CVD-specific mortality	1.02 (1.02-1.03)							

CONCLUSION: Long-term ambient PM_{2.5} exposure is associated with CVD outcomes among patients receiving maintenance in-center HD.

Yuzhi Xi, David B. Richardson, Abhijit V. Kshirsagar, et al
 @AJKDonline | DOI: 10.1053/j.ajkd.2022.04.008

