



A novel framework to investigate wind-driven snow redistribution over an Alpine glacier: combination of high-resolution terrestrial laser scans and large-eddy simulations

Annelies Voordendag^{1,2,★}, Brigitta Goger^{1,3,★}, Rainer Prinz¹, Tobias Sauter⁴, Thomas Mölg⁵, Manuel Saigger⁵, and Georg Kaser¹

¹Department of Atmospheric and Cryospheric Sciences, Universität Innsbruck, Innsbruck, Austria

²Institute of Geodesy and Photogrammetry, ETH Zurich, Zurich, Switzerland

³Center for Climate Systems Modeling, ETH Zurich, Zurich, Switzerland

⁴Geographisches Institut, Humboldt-Universität zu Berlin, Berlin, Germany

⁵Climate System Research Group, Institute of Geography, Friedrich-Alexander-Universität (FAU) Erlangen-Nürnberg, Erlangen, Germany

★These authors contributed equally to this work.

Correspondence: Annelies Voordendag (annelies.voordendag@geod.baug.ethz.ch) and Brigitta Goger (brigitta.goger@c2sm.ethz.ch)

Received: 25 June 2023 – Discussion started: 30 June 2023

Revised: 4 January 2024 – Accepted: 8 January 2024 – Published: 23 February 2024

Abstract. Wind-driven snow redistribution affects the glacier mass balance by eroding or depositing mass from or to different parts of the glacier's surface. High-resolution observations are used to test the ability of large-eddy simulations as a tool for distributed mass balance modeling. We present a case study of observed and simulated snow redistribution over Hintereisferner glacier (Ötztal Alps, Austria) between 6 and 9 February 2021. Observations consist of three high-resolution digital elevation models ($\Delta x = 1$ m) derived from terrestrial laser scans taken shortly before, directly after, and 15 h after snowfall. The scans are complemented by datasets from three on-site weather stations. After the snowfall event, we observed a snowpack decrease of 0.08 m on average over the glacier. The decrease in the snow depth can be attributed to post-snowfall compaction and the wind-driven redistribution of snow. Simulations were performed with the Weather Research and Forecasting (WRF) model at $\Delta x = 48$ m with a newly implemented snow drift module. The spatial patterns of the simulated snow redistribution agree well with the observed generalized patterns. Snow redistribution contributed -0.026 m to the surface elevation decrease over the glacier surface on 8 February, resulting in a mass loss of -3.9 kg m⁻², which is on the same order of magnitude as the

observations. With the single case study we cannot yet extrapolate the impact of post-snowfall events on the seasonal glacier mass balance, but the study shows that the snow drift module in WRF is a powerful tool to improve knowledge on wind-driven snow redistribution patterns over glaciers.

1 Introduction

The European mountain cryosphere is an important contributor to Alpine water availability and experiences, like the worldwide cryosphere, the effects of global climate warming (e.g., Fox-Kemper et al., 2021; Hock et al., 2022). The annual mass balances of the Alps' glaciers have been increasingly more negative since the 1980s (Marzeion et al., 2012; Huss and Hock, 2018; Hugonnet et al., 2021), and extreme glacier mass losses have been observed in more recent years (Copernicus Climate Change Service (C3S), 2023; Voordendag et al., 2023b; Cremona et al., 2023). However, a knowledge gap still exists on the impact of small-scale processes such as cryosphere–atmosphere exchange or wind-driven snow transport on snow accumulation over mountain glaciers (e.g., Mott et al., 2018; Beniston et al., 2018). Spatial

observations of snow cover changes on mountain glaciers are sparse and often only available on the point scale, and numerical weather prediction models on the kilometeric range are not able to resolve the relevant small-scale boundary layer processes and surface fluxes over highly mountainous terrain (Vionnet et al., 2016; Goger et al., 2018, 2019; Gouttevin et al., 2023). On the other hand, distributed mass balance models (Machguth et al., 2006), e.g., COSIPY (Sauter et al., 2020), require high-resolution input fields to deliver information about a glacier's surface mass balance. Among the usual meteorological variables (e.g., temperature, wind speed, relative humidity, total precipitation), snow depth can also be used as an initial condition, improving the accuracy of distributed surface mass balance models.

In general, snow depth distribution over complex terrain cannot be assumed to be homogeneous. The spatial precipitation pattern over mountains is heterogeneous due to multi-scale interactions of the atmospheric flow with topography (Frei and Schär, 1998; Isotta et al., 2013; Colle et al., 2013). Furthermore, during or after snowfall, the depth of the snowpack is affected by four processes: melt, compaction, sublimation, and wind-driven snow redistribution. Compaction of the snowpack can be driven by the overburden of its own weight, the pressure exerted by the wind, and/or snow metamorphism processes. Snow redistribution is the relocation of wind-borne snow, also called snow drift, from one part of the snow-covered area to another (Cogley et al., 2011; Mott et al., 2018). Redistributed snow leads to a snow depth decrease in areas where snow is eroded, and snow cover increases where snow particles are deposited. The resulting snow patterns strongly depend on the local topography and the wind speed and direction (Gerber et al., 2017; Vionnet et al., 2013, 2021; Sauter et al., 2013). The complex terrain makes mountain glaciers subject to heterogeneous snow cover distribution caused by both complex precipitation patterns and wind-driven redistribution during and after snowfall (Dadic et al., 2010).

It is still a challenge to measure the spatial (re-)distribution of the snow cover continuously in a complex alpine environment. One possible method to record glacier-wide snow distribution of precipitation and the post-snowfall surface elevation changes over a glacier is with repeated digital elevation models (DEMs) derived from terrestrial or airborne laser scanning (TLS/ALS). In recent times, surface elevation changes at mountain glaciers were measured with both TLS (Fischer et al., 2016; Prantl et al., 2017; Xu et al., 2019; Mendoza et al., 2020) and ALS (Grünewald et al., 2014; Table 2). However, these DEMs are acquired irregularly and at low temporal resolution. Long-term, continuous data series that capture snowfall and snow redistribution over a certain area are not yet available. This gap was addressed with the installation of a permanent TLS station near Hintereisferner (HEF) glacier, located in the Ötztal Alps, Austria (Voordendag et al., 2021b). This TLS station acquires a daily DEM automatically, but even hourly acquisitions are

possible if manually initiated. A comprehensive uncertainty assessment shows that this TLS station is able to capture small glacier surface changes, such as snow (re-)distribution (Voordendag et al., 2023a). The high temporal and spatial data resolution contributes to improving the process understanding at HEF and can be used to evaluate surface elevation changes in atmospheric model simulations.

Modeling snow processes is usually achieved by a large variety of standalone snow models, which receive input data from atmospheric models or observations (Krinner et al., 2018; Menard et al., 2021). Recent studies also coupled full (previously) stand-alone snowpack models with atmospheric models. For example, Vionnet et al. (2014) coupled the Crocus snow model with the Méso-NH large-eddy simulation (LES) model to explore snow accumulation patterns. They found that the wind-induced snow redistribution is responsible for an increase in spatial variability in snow depth. The most recent development in this direction is CRYOWRF (Sharma et al., 2023), where the SNOWPACK model (Lehning et al., 1999), including a snow drift module, was coupled to the Weather Research and Forecasting (WRF) model (Skamarock et al., 2019). First results suggest that CRYOWRF is capable of simulating snow accumulation and redistribution over the Swiss Alps and Antarctica (Sharma et al., 2023; Gerber et al., 2023).

While fully coupled snow–atmosphere model chains likely resolve coupled processes and atmosphere–cryosphere interactions well for case studies (at a high numerical cost), common numerical weather prediction (NWP) models include multi-layer snow schemes within their land-surface models, e.g., the Noah-MP scheme in the WRF model (Niu et al., 2011) or the snow model in the Integrated Forecasting System (IFS; Arduini et al., 2019). Usually, these land-surface models are less complex than full snow models and do not include a package for wind-driven snow redistribution, although the horizontal resolution of NWP models keeps decreasing and process studies at LES resolution ($\Delta x \approx \mathcal{O}(10\text{m})$) over mountainous terrain have become more and more relevant for process understanding in recent years (e.g., Gerber et al., 2018; Umek et al., 2021; Goger et al., 2022). At this resolution, both topography and glacier ice surfaces in the Alps can be expected to be well-resolved, given that at least 10 grid points across a valley are necessary to resolve the relevant boundary layer processes (Wagner et al., 2014). This criterion is clearly met over HEF in the summer glacier boundary layer simulations at $\Delta x = 48\text{ m}$ by Goger et al. (2022).

Recently, the `snow2blow` snow scheme by Sauter et al. (2013) was implemented in the WRF model by Saigger et al. (2023). To our current knowledge, this is the first time where an openly available, easy-to-use (i.e., no changes in compilation procedure) formulation for wind-driven snow redistribution is implemented in the WRF model code. In this study, we combine the high-resolution LES setup by Goger et al. (2022) with the TLS scans from Voordendag et al. (2021b)

to study the impact of wind-driven snow redistribution on a large Alpine glacier for a case study. We present a first evaluation of the newly implemented snow drift scheme with high-resolution TLS observations and examine whether the model delivers realistic results in snow depth change and spatial patterns in this highly complex environment. Furthermore, with the aid of the model, we can also try to disentangle the physical processes affecting the snowpack on the glacier, which cannot be determined via the surface elevation changes measured by the TLS. Finally, we can give a cautious estimate on the impact of wind-driven snow redistribution on glacier mass balance.

This paper is organized as follows: first, we describe our study area and the selection of the case study between 6 and 9 February 2021. In Sect. 2 we give an overview of the TLS station, meteorological observations, and the model setup with the implemented snow drift module. The first part of the results (Sect. 3) includes the observed snow depth changes with the TLS; an overview of the meteorological situation at the glacier as seen by point observations; and an evaluation of the model performance in terms of precipitation, wind patterns, and snow water equivalent changes. In the second part of the results, the TLS data are compared with the model output on wind-driven snow redistribution. We estimate the snow compaction from the observational data and give a final assessment on the reliability of the model data. We deliver a detailed discussion on the advantages and shortcomings of our setup (Sect. 4). Finally, we conclude and discuss the future implications of this work.

2 Methods

2.1 Study area and available observations

The Hintereisferner (HEF) is a large valley glacier located in the Ötztal Alps, Austria (Figs. 1a, 2). HEF has been a principal research site to study glaciological processes since the early days of glacier research (Blümcke and Hess, 1899). Annual and seasonal glaciological mass balance measurements have been acquired since 1952/53, and HEF is classified as one of the “reference glaciers” by the World Glacier Monitoring Service (WGMS; Zemp et al., 2009). HEF has a length of approximately 6.3 km and stretches from its highest point, the Weißkugel (3738 m a.s.l., above sea level), down to a terminus altitude of 2460 m a.s.l. (data from 2018). The glacier and its surroundings are well-equipped with several automated weather stations as part of the Rofental catchment observational network (Strasser et al., 2018). The major station for this study is Im Hinteren Eis (IHE), which has existed since 2016 and is located on the orographic right side of the glacier on the ridge at the Austrian–Italian border (Fig. 1). IHE is equipped with a permanently installed TLS device, which is extensively described in Voordendag et al. (2021b, 2023a) and Sect. 2.3 of

this study. Additionally, two webcams, which deliver images every 30 min¹, are installed at the position of the TLS and overlook the glacier surface. About 50 m from the container with the TLS, an eddy-covariance flux tower is installed at the mountain ridge (Table 1), providing turbulence observations which have been used for the fundamental evaluation of boundary layer theory (Stiperski et al., 2021; Stiperski and Calaf, 2023) and model evaluation (Goger et al., 2022). After postprocessing (Stiperski and Rotach, 2016; Rotach et al., 2017), the averaged variables (e.g., wind speeds, air temperature, surface fluxes, and turbulence kinetic energy) are available at a 15 min interval.

The second station is Station Hintereis (StHE; Fig. 1a), located on the orographic left side of the glacier and equipped with an automatic weather station (Table 1) and a mountain hut used for logistical support. At this location, meteorological measurements were conducted for more than 50 years (Obleitner, 1994), mostly during the summer season. Continuous, all-season observations of common meteorological variables are available from 2010 onwards. Last, a temporary automatic weather station was installed at the glacier in the line of sight between IHE and StHE from 7 December 2020 to 22 February 2021 and will be called “AWS28” hereafter, as it was installed at an altitude of approx. 2800 m a.s.l. It provides common meteorological measurements (Table 1). The meteorological observations from the three stations are used to explain the meteorological situation and to validate the simulations (see Sect. 2.4) on a point scale.

2.2 Case study selection

The case study has been selected based on the meteorological observations and the images recorded by the webcams by applying the following criteria:

- The period should be in winter and show a pronounced change in the synoptic weather situation with a subsequent accumulation of fresh snow.
- Wind speeds above 5 ms^{−1} should be observed during or directly after the snowfall event to ensure wind-driven snow redistribution.
- No surface elevation change due to melt should be occurring.
- Frequent TLS scans must be available (Sect. 2.3).

The time window of 6–9 February 2021 met these criteria.

The large-scale synoptic situation from ERA5 reanalysis data revealed that the Alps were under the influence of large-scale southerly flow and moisture transport from the Mediterranean Sea. The southerly flow was mostly associated with a trough over France moving eastward towards

¹<http://www.foto-webcam.eu/webcam/hintereisferner/> (last access: 13 February 2024)

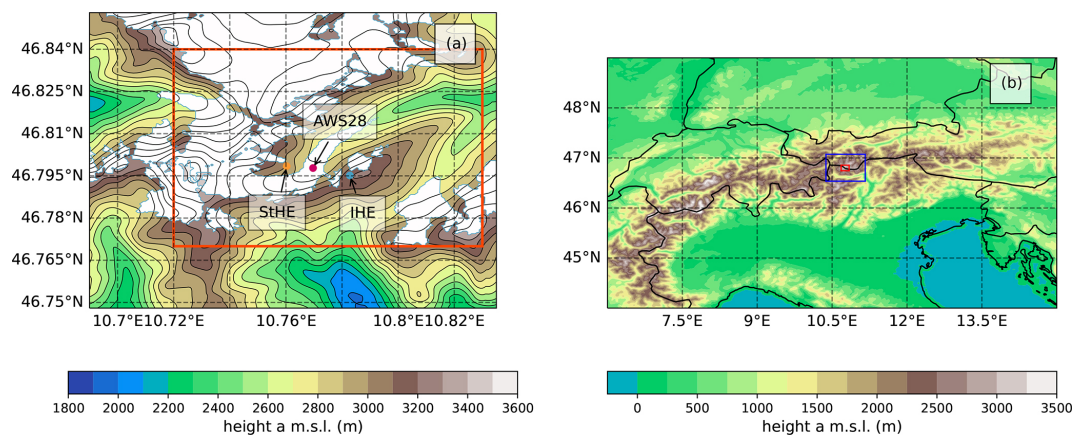


Figure 1. (a) Overview of the innermost model domain ($\Delta x = 48$ m, red rectangle) with the model topography (contour lines) and the glacier areas as represented in the model (white area with light blue outlines). The locations of the three stations – StHE, AWS28, and IHE – are highlighted in colors. (b) The mesoscale domain ($\Delta x = 1$ km) spanning the Alps with the two LES domains highlighted in blue ($\Delta x = 240$ m) and red ($\Delta x = 48$ m).

Table 1. Location, altitude, and available observations at Im Hinteren Eis, Station Hintereis, and AWS28 during the period of the case study.

	Im Hinteren Eis	Station Hintereis	AWS28
Latitude	46.795761	46.798896	46.79779
Longitude	10.783409	10.760373	10.76967
Altitude (m a.s.l.)	3264	3031	2782
Air pressure	Setra278 CS100	Setra278 CS100	Vaisala PTB 110
Air temperature	Rotronic HC2-S3 ventilated at 1.50 and 5.50 m	Campbell Scientific EE181 naturally ventilated at 2.10 m	Campbell Scientific CS215
Precipitation	Geonor T200B	Ott Pluvio2L	
Radiation	Kipp & Zonen CNR4	Kipp & Zonen CNR4	Kipp & Zonen CNR4
Relative humidity	Rotronic HC2-S3 ventilated at 1.50 and 5.50 m	Campbell Scientific EE181 naturally ventilated at 2.10 m	Campbell Scientific CS215
Snow depth	Campbell Scientific SR50ATH-L	Campbell Scientific SR50A	Campbell Scientific SR50A
Wind speed and direction	Lufft Ventus-UMB at 1.50, 3.00, and 6.00 m	Young 05103-45 Alpine at 3.30 m	Young 05103
3D sonic anemometer	Metek uSonic-3 at 3.18 m		
TLS	RIEGL VZ-6000		
Webcams	Canon EOS1200D (2×)		

the Alps, while the trough axis passed our location of interest on 7 February 2021 after 18:00 UTC. The associated surface frontal system brought pre-frontal snowfall, which ceased in the early morning hours of 8 February, while the actual cold front passed the glacier likely around 09:00 UTC, together with a rise in air temperatures and a decrease in cloud cover. After the trough passage, winds at upper levels

shifted towards westerlies, while at crest levels, winds shifted from westerlies to southwesterlies. At around 12:00 UTC, the wind speeds increased to over 5 m s^{-1} , providing excellent snow drift conditions. Webcam imagery (Fig. 2) of 8 February at 15:30 local time (UTC+1) shows blowing snow at the mountain ridges surrounding the glacier, indicating high wind speeds and snow drift.

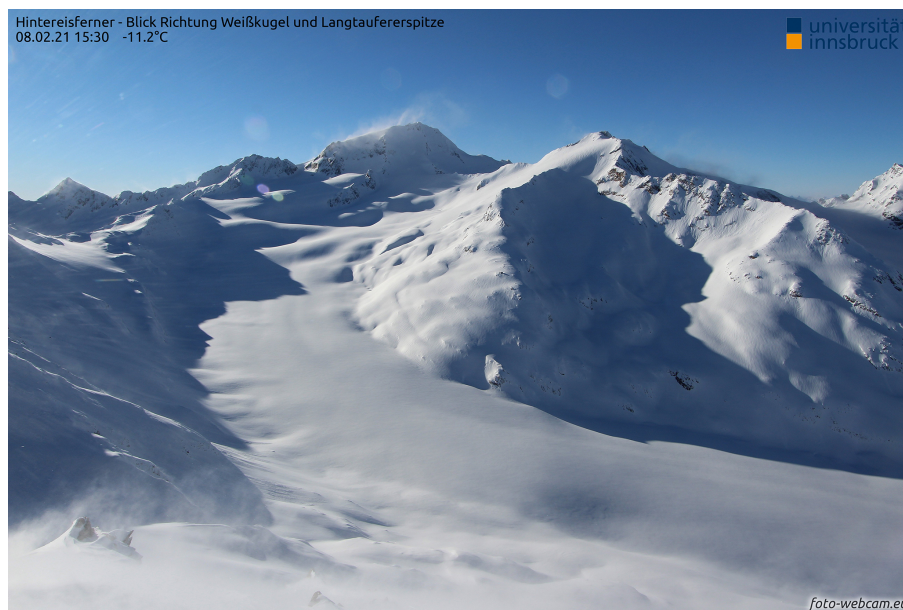


Figure 2. Webcam image of 8 February 2021 at 15:30 (UTC+1) showing signs of snow drift at the mountain ridges. The image is retrieved from <https://www.foto-webcam.eu/webcam/hintereisferner1/2021/02/08/1530> (last access: 13 February 2024).

2.3 Terrestrial laser scanning acquisitions

The location IHE is equipped with a permanently installed and automated TLS station (Voordendag et al., 2021b). The TLS station has been in operational daily use since 2020 and thus delivers a daily point cloud of HEF under clear weather conditions (e.g., no clouds between TLS and target surface). The TLS station is normally set to a daily acquisition at 01:42 UTC, but as the end of a snowfall period was observed in the webcam images on 8 February at 10:22 UTC, an additional scan acquisition was initialized. This led to three usable scans for the case study: shortly before the snowfall event on 6 February (01:42 UTC), directly after the snowfall of 8 February (10:22 UTC), and approximately 15 h after snowfall ended on 9 February (01:42 UTC). In the following text, we refer to these scans as scans 1, 2, and 3, respectively. The acquired point clouds are registered to each other with the RiSCAN PRO software (RIEGL, 2019) and gridded to digital elevation models (DEMs) with an 1 m horizontal resolution. Voordendag et al. (2023a) investigated surface change processes that can be captured by the TLS station. They found that the scans have an uncertainty of ± 0.10 m in the vertical direction after the registration in RiSCAN PRO. In this study, the scans were registered with manually selected tie objects, such as snow-free rocks and the walls of StHE, which led to a better registration than the calculated ± 0.10 m in the vertical direction with automatically selected tie planes in Voordendag et al. (2023a). In addition to the 1 m grid size DEMs, the high-resolution point clouds are gridded to DEMs with a $\Delta x = 48$ m, allowing a direct comparison to the numerical simulations.

2.4 Numerical model

We employ the Weather Research and Forecasting (WRF) model version 4.1 (Skamarock et al., 2019) in a nested setup for the numerical simulations of the case study period. The numerical setup is the same as described by Goger et al. (2022); therefore we only mention the most relevant aspects. As model boundary conditions, we use ERA5 reanalysis data, feeding the outermost WRF domain ($\Delta x = 6$ km) spanning Europe and subsequently nesting down across $\Delta x = 1$ km (mesoscale domain) to the two LES domains at $\Delta x = 240$ m and $\Delta x = 48$ m (Fig. 1). We choose the Shuttle Radar Topography Mission (SRTM) 1 arcsec global topography dataset (USGS, 2000) as raw data for the model topography. Due to numerical constraints, the topography data have to be terrain smoothed with a 1–2–1 smoothing filter (Guo and Chen, 1994). For the two domains at the hectometric range, the coarser domain's topography was interpolated to the grid of the higher-resolution domains, and slopes steeper than 30° were replaced with slopes from the respective coarser-grid topography to avoid numerical instabilities. Henceforth, instead of applying more smoothing cycles, we can keep a part of terrain heterogeneity with this method. We utilize ESA CCI land cover (ESA, 2017) for the two outer domains, while we put a special focus on the correct representation of land-use and glacier outlines in the LES domains. We use the CORINE land-use dataset (European Environmental Agency, 2017) with an additional correction of the ice surfaces of the glaciers as described in Goger et al. (2022). Noah-MP (Niu et al., 2011) is used as a land-surface scheme, which includes a three-layer snow model. Snow compaction

by the snowpack's own weight is calculated following the empirical relations by Anderson (1976) and Sun et al. (1999). Furthermore, we implemented a novel snow drift module as described in Sect. 2.4.1. We use Thompson microphysics (Thompson et al., 2008), where snow assumes a nonspherical shape with a bulk density varying with diameter. The MM5 revised surface layer scheme (Jiménez et al., 2012) and the RRTMG two-stream radiation scheme (Iacono et al., 2008) with topographic shading for all domains are utilized. For the boundary layer turbulence we employ the MYNN parameterization (Nakanishi and Niino, 2009) for the two outermost domains, while we switch it off in the LES domains and employ the turbulence closure following Deardorff (1980). Furthermore, we also use the online averaging module by Umek et al. (2021); therefore, all model outputs shown in the following are 15 min averages. The model is initialized on 8 February at 00:00 UTC and runs for 24 h. We would like to stress that the snowpack in the model is initialized at the same time. This might introduce a slight bias in snowpack density, since the model initializes the snowpack as “fresh snow”, while in reality, an older snowpack is already present at the glacier and its surroundings. However, due to the expensiveness of the LES, a long spinup period of, e.g., weeks, is not feasible with our current setup. We consider this possible shortcoming in our later analysis of the model data and keep in mind that the modeled snowpack density profile likely differs from reality.

2.4.1 Snow drift module

The snow drift scheme we used is based on the `snow2blow` model, initially developed by Sauter et al. (2013). Previously, offline simulations with `snow2blow` were forced with WRF input data (e.g., for simulations of blowing snow over the Vestfonna ice cap, Svalbard; Sauter et al., 2013), but recently `snow2blow` was directly implemented in the WRF code by Schmid (2021) to allow coupled simulations (i.e., feedback to the atmosphere). While the detailed description of the module and the implementation in WRF is the subject of another paper (Saigger et al., 2023), we outline the governing equations and most relevant features of the scheme in the following paragraphs.

The scheme builds on the widely used approach of dividing the process of drifting snow into a saltation layer and snow particles in suspension, where snow particles are transported by the resolved wind field and turbulent diffusion, as well as being subject to gravity-driven subsidence and sublimation. In the model, suspended snow particles are treated as a passive tracer so that advection and turbulent diffusion are handled by WRF internal schemes, while subsidence and sublimation are parameterized. The saltation layer is fully parameterized and acts as a lower boundary condition for the flux of snow into suspension. The drifting snow mainly interacts with the mean flow while neglecting particle interactions. The mass conservation of snow particles is given by

the continuity equation

$$\frac{\partial \phi_s}{\partial t} + \frac{\partial(\phi_s \mathbf{u}_i)}{\partial x_i} = \frac{\partial}{\partial x_3} \left(\nu_t \frac{\partial \phi_s}{\partial x_3} - V \phi_s \right) + \left(\frac{\partial \phi_s}{\partial t} \right)_{\text{sub}}, \quad (1)$$

where ϕ_s is the mass concentration of snow particles in the suspension layer, $\partial \phi_s / \partial t$ is the local rate of snow concentration change, x_i is the Cartesian coordinates, \mathbf{u}_i is the Cartesian components of the velocity vector, ν_t is the turbulent viscosity, and V is the terminal fallout velocity. The fallout velocity,

$$V(z) = -\frac{A}{r(z)} \sqrt{\left(\frac{A}{r(z)} \right)^2 + B \cdot r(z)}, \quad (2)$$

depends on the snow particle radius at height z :

$$r(z) = r_0 \cdot z^{-0.258}. \quad (3)$$

A and B are constants and are calculated with

$$A = \frac{6.203 \cdot \nu_{\text{air}}}{2} \quad (4)$$

and

$$B = \frac{5.516 \cdot \rho_{\text{ice}}}{4 \cdot \rho_{\text{air}}} \cdot g. \quad (5)$$

Here ν_{air} represents the viscosity of air, ρ_{ice} the pure-ice density, and g the acceleration due to gravity. r_0 is the particle radius at ground level following Gordon et al. (2010), with

$$r_0 = 0.5 \left(\frac{7.8 \cdot 10^{-6} u_*}{0.036} + 31 \cdot 10^{-6} \right) \quad (6)$$

and u_* the friction velocity. Optionally, $V(z)$ and r_0 can be set to constant values in the model settings.

The last term in Eq. (1) accounts for the mass loss of suspended snow due to sublimation based on the formulation of Thorpe and Mason (1966), where the sublimation loss rate of suspended snow is approximated by $\psi_s \phi_s$, with ψ_s as the sublimation loss rate coefficient. This coefficient describes the change in snow particle mass due to heat exchange and ventilation effects. The scheme considers the effect of sublimation on the vertical temperature and humidity profiles in the boundary layer. This feedback mechanism self-limits the sublimation process because its intensity depends on the saturation deficit of the atmospheric environment (Sauter et al., 2013).

In the saltation layer, snow mass concentration is gained by aerodynamic entrainment from the snowpack below. Snow transport occurs when the surface shear stress exceeds the cohesive bond of the particles. The erosional mass flux is therefore proportional to the excess surface shear stress:

$$q_e = e_{\text{salt}} \rho_a \left(\left[(u_{\text{th}} - u_*) \left(\frac{\phi_{\text{salt}}}{\phi_{\text{max}}} \right)^2 + u_* \right]^2 - u_{\text{th}}^2 \right), \quad (7)$$

where ρ_a is the air density, u_* the surface shear stress, ϕ_{salt} the concentration in the saltation layer, u_{th} the friction threshold velocity, and ϕ_{max} the maximum particle concentration in the saltation layer. Since the particle erosion process depends on the cohesive bonds of the snow particles, the snow density, ρ_s , is not affected by snow drift in the model (Walter et al., 2004):

$$u_{\text{th}} = 0.0195 + (0.021\sqrt{\rho_s}). \quad (8)$$

The efficiency of the erosion process is governed by the heuristic parameter e_{salt} [–]. Particle drag reduces the momentum, which in turn limits the capacity to eject further particles. When ϕ_{salt} reaches ϕ_{max} , the friction velocity reduces to the friction threshold velocity, and the release of snow particles is stopped. The upper limit of ϕ_{max} is given by the following semi-empirical relationship (Pomeroy and Male, 1992):

$$\phi_{\text{max}} = \frac{\rho_a}{3.29 \cdot u_*} \left(1 - \frac{u_{\text{th}}^2}{u_*^2} \right). \quad (9)$$

When the friction velocity drops below the threshold, particle deposition takes place. The deposition flux q_d corresponds to the downward flux and the modified shear stress ratio:

$$q_d = V\phi_s \cdot \max \left(\frac{u_{\text{th}}^2 - u_*^2}{u_{\text{th}}^2}, 0 \right). \quad (10)$$

The first term on the right-hand side describes the vertical turbulent mixing of the snow and the terminal fall velocity V , while the second term shows the effect of sublimation in snow mass flux change.

3 Results

First, the observed snow depth changes from the TLS acquisitions are introduced and discussed in detail. We explicitly note here that the observations from the TLS data only show the snow depth changes, without distinguishing between different processes. Thus, in the next subsections, we explain the accompanying processes with the aid of further observations at point scale. We use the observations to evaluate the results from the LES, especially in terms of wind patterns and the resulting snow redistribution. Last, we compare the observed and modeled spatial patterns.

3.1 Observed snow depth changes

The three TLS scans reveal the changes in snow depth over several days and also show the heterogeneous snow distribution over the glacier and its surroundings. First, the DEM of difference (DoD) between scans 1 and 2 shows an increase in surface elevation over almost the entire area of interest (Fig. 3a). The surface elevation increase is snowfall:

the precipitation gauges at IHE and StHE registered precipitation, and the snow depth sensor at AWS28 observed a snow depth increase as well (Fig. 4). The snow was evenly distributed over the glacier surface, but the slopes adjacent to HEF showed a more heterogeneous snow distribution between scans 1 and 2 (i.e., around StHE; Fig. 3a), which might indicate preferential snow deposition and/or snow redistribution during the snowfall event (e.g., Mott and Lehning, 2010). From the TLS data, 0.28 m of snow were deposited on average over the glacier, and the snow depth sensor observed an increase of 0.45 m between scans 1 and 2 at AWS28. In this study, we do not elaborate on the snow depths at IHE and StHE, as the terrain-dependent snow cover dynamics are unrepresentative at these two stations compared to the rather smooth and homogeneous glacier surface around AWS28.

The DoD between scans 2 and 3 shows a general decrease in the snow depth over the glacier of 0.079 m on average (Fig. 3b). This is in agreement with the snow depth observations at AWS28, where a decrease of 0.08 m was observed by the snow depth sensor between scans 2 and 3 (Fig. 4). A zoom in on the glacier surface on the orographic left side of the glacier (Fig. 3c), and a look at the webcam images reveals patterns which are likely the results of snow redistribution, given their spatial structure. On the glacier surface around AWS28 (pink dot, Fig. 3c), a wavy pattern is evident with magnitudes between approximately -0.15 and -0.05 m. This is comparable to snow bedform observations over similar flat surfaces (Filhol and Sturm, 2015; Kochanski et al., 2018). With the resolution of the snow structure at $\Delta x = 1$ m and the webcam images, we cannot distinguish between the snow bedforms (i.e., waves, dunes, barchans, or ripples), but the structure is wind-driven. At the slopes adjacent to the glacier surface, snow erosion is observed at the windward southwest slopes, and this snow is deposited directly at the closest northeast leeward slopes. This is particularly evident around the location of StHE and the orographic left side of HEF (Fig. 3c). These structures are mainly induced by the rough surface caused by rocks at the slopes surrounding the glacier and again indicate wind-driven snow depth changes.

Avalanches, induced by fresh snow or wind slabs, are observed over the orographic right side of HEF at an altitude of 2910 m a.s.l. (Fig. 3d). The release zone of the avalanche with magnitudes between -0.25 and -0.68 m is indicated by the dark red color, whereas the dark blue zone shows the deposition area of the avalanche up to $+1.26$ m high.

We elaborated on the elevation changes at the glacier and the surroundings from the TLS observations, but we aim to investigate the nature of these changes. The surface elevation changes are caused by redistributed snow, compaction, and sublimation. Surface temperature observations from AWS28 below the freezing point suggest that melt can be excluded at the glacier during the study period; the simulations also suggest that surface temperatures remain below the freezing point over the entire glacier. To distinguish between these

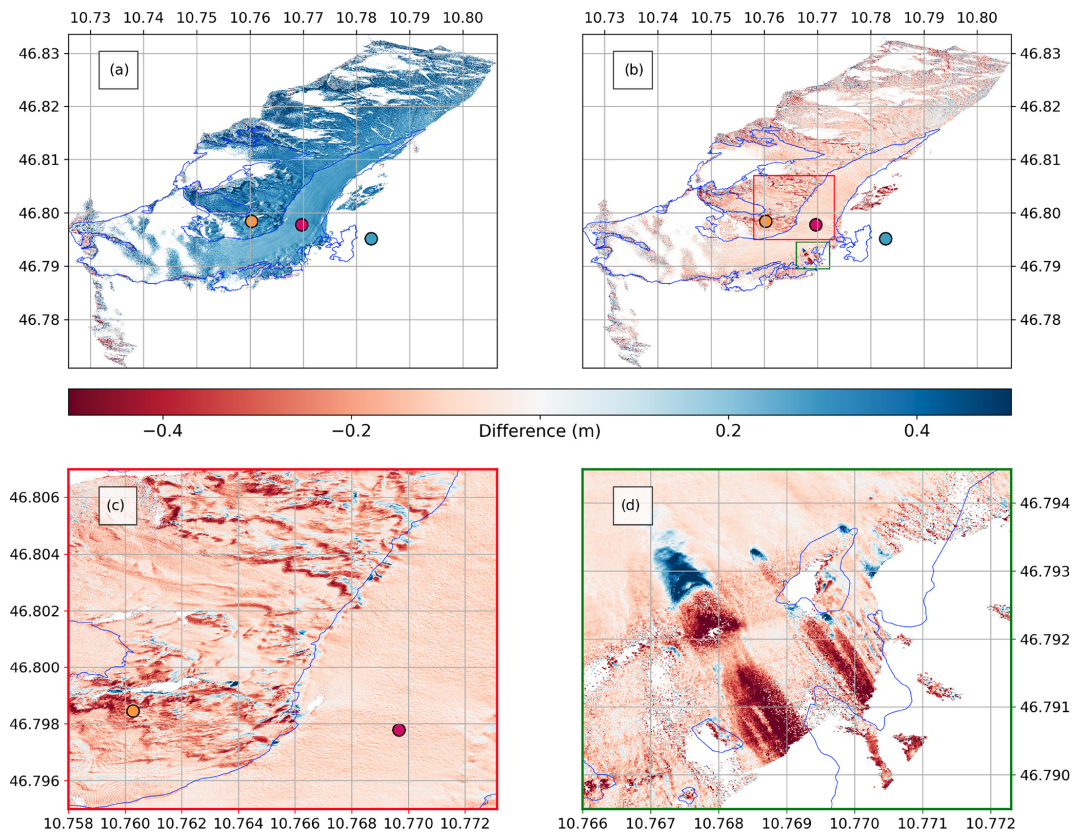


Figure 3. DEM of difference in the TLS scans ($\Delta x = 1$ m) between (a) scan 1 and scan 2 and (b) scan 2 and scan 3. Panel (c) is a zoom of the red box in (b) showing signs of snow redistribution, and (d) is a zoom of the green box in (b) showing avalanches. The glacier outlines (blue) are derived from the ALS data acquired by the Federal Government of Tyrol in 2018. IHE (blue), StHE (orange), and AWS28 (pink) are also plotted.

processes, we now analyze the additional meteorological observations and the numerical simulations.

3.2 Meteorological situation at the glacier: observations and simulations

3.2.1 Precipitation

Mostly small precipitation amounts were registered on 5 and 6 February at StHE (Fig. 4). The situation changed when pre-frontal precipitation approached our area of interest (7 February, around 00:00 UTC). Webcam images, the precipitation gauge, and the increasing snow depth at AWS28 suggested that fresh snow accumulated on 7 and 8 February. Precipitation stopped at around 06:00 UTC on 8 February. Precipitation was also registered during the acquisition of scans 1 and 3, but this precipitation was not evident in the TLS data and in the webcam images. The precipitation during scan 1 was actually registered after the TLS acquisition, as seen in the 10 min data. Furthermore, we speculate that the precipitation registered during scan 3 is drifting snow that is captured by the precipitation gauge.

Additionally, precipitation observations are subject to undercatch, which is a well-known problem for precipitation (Goodison et al., 1998; Rasmussen et al., 2012; Smith, 2007; Colli et al., 2014). The data of the precipitation gauge at IHE are not analyzed here, as the gauge is placed at a wind-exposed ridge that is hardly ever covered with snow and is thus prone to large amounts of undercatch. The timing and registration of snowfall support the assumption that the snow depth increase between scan 1 and scan 2 (Fig. 3a) was due to solid precipitation.

3.2.2 Wind speed and direction

We now mostly focus on 8 February, since on this day the snow drift event of interest occurred. Observed time series of wind speed and direction at the glacier and its surroundings on 8 February (Fig. 5) suggest low wind speeds (less than 5 m s^{-1}) with mainly northerly flow during the night and the morning hours (8 February from 00:00 UTC–09:00 UTC). The wind direction changed towards southwesterly at around 09:00 UTC, while wind speed increased to more than 5 m s^{-1} at all stations. The wind speed increased even to more than 10 m s^{-1} at the south-facing slope (StHE)

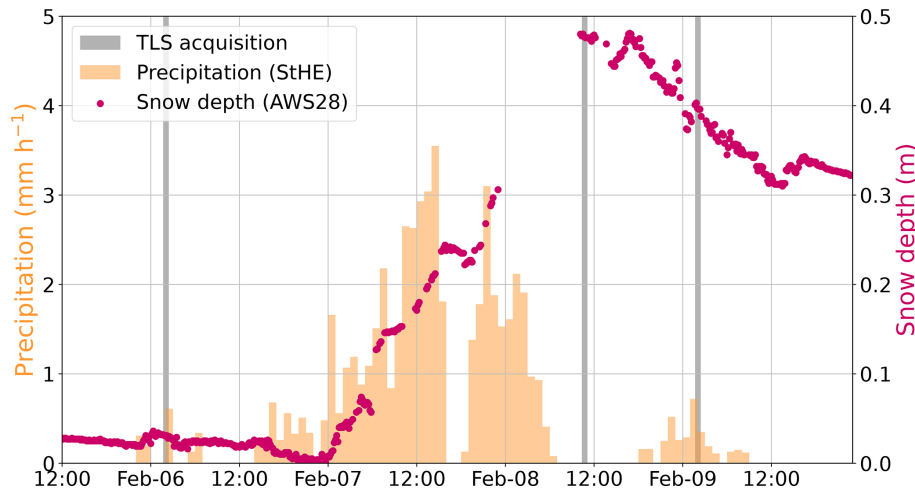


Figure 4. Precipitation (StHE: orange) and relative snow depth observations (AWS28: pink) during the case study period. Note that the precipitation observation is not corrected for undercatch and that the snow depth is arbitrarily chosen to start at 0 m at the minimum observed during the case study period despite the glacier already being covered in snow and thus the actual snow depth being more than 0 m. The gray bars indicate the time of the TLS acquisitions.

Table 2. Bias and RMSE (15 min data) of wind speed calculated for the three weather stations (StHE, IHE, and AWS28), averaged over 24 h of simulation time.

Station	Wind speed bias (m s^{-1})	Wind speed RMSE (m s^{-1})
StHE	2.35	3.53
IHE	2.08	4.23
AWS28	0.96	1.81

and the crest (IHE), while the wind speeds on the glacier remained below 10 m s^{-1} (AWS28). After 15:00 UTC, observed wind speeds increased to more than 10 m s^{-1} , which allowed for wind-driven snow distribution.

Similar to the weather station observations, the model simulates low wind speeds during the nighttime at all three stations. The frontal passage (06:00–12:00 UTC) is the time period with the highest discrepancy between model and observations. The sudden increase in wind speed sets in an hour earlier than in the observations (Fig. 5), together with an earlier increase in wind speed, especially at StHE. Furthermore, the wind direction deviated slightly (below 30°) from the observations throughout the simulations. Both the observations and the model suggest dominating southwesterly wind directions with wind speeds over 5 m s^{-1} at all three stations after 8 February at 12:00 UTC. This agrees with the TLS observations (Fig. 3c), which also indicate snow redistribution due to these strong, southwesterly winds. We calculated the bias and root mean square error (RMSE) values over the 24 h of simulation time following Eqs. (13) and (14) in Goger et al. (2019) for the horizontal 15 min wind speed of the three stations (Table 2). Bias values suggest a wind speed overestima-

tion at all three stations, while this overestimation can likely be attributed to the front passage phase. The best model performance is found for the station on the glacier (AWS28), our primary location of interest.

Overall, judging from the observations we have, the model simulates the wind field on the glacier and the surroundings reasonably well, and we assume that the model provides good input conditions for the snow redistribution scheme. However, we have to keep in mind that our set of wind observations is limited and we cannot assess on the correct simulation of the spatial patterns of the wind fields.

3.2.3 Compaction, snow water equivalent, and snow redistribution

The TLS observations do not give information on the individual contributions of redistributed snow, sublimation, and compaction to surface elevation changes. Compaction of snow can be detected if the snow water equivalent (SWE) remains constant after a snowfall event, together with a simultaneous, continuous decrease in snow depth. SWE observations are not available during the case study period. To investigate the possible amounts of compaction at HEF, we had a look at data from an automatic weather station (AWS) that was installed at HEF in the winters of 2021/22 and 2022/23 at an altitude 3030 m a.s.l. and provides SWE and snow depth data (Schröder, 2023). In these two winters, we examined snow depth and SWE data of nine snowfall events with amounts between 0.14 and 0.38 m of fresh snow at the AWS. A total of 16 h after the snowfall, the snowpack decreased between -6.5% and -25% of the respective fresh snow amounts. In the mean time, no significant changes in the SWE were observed. Even though the winters are not di-

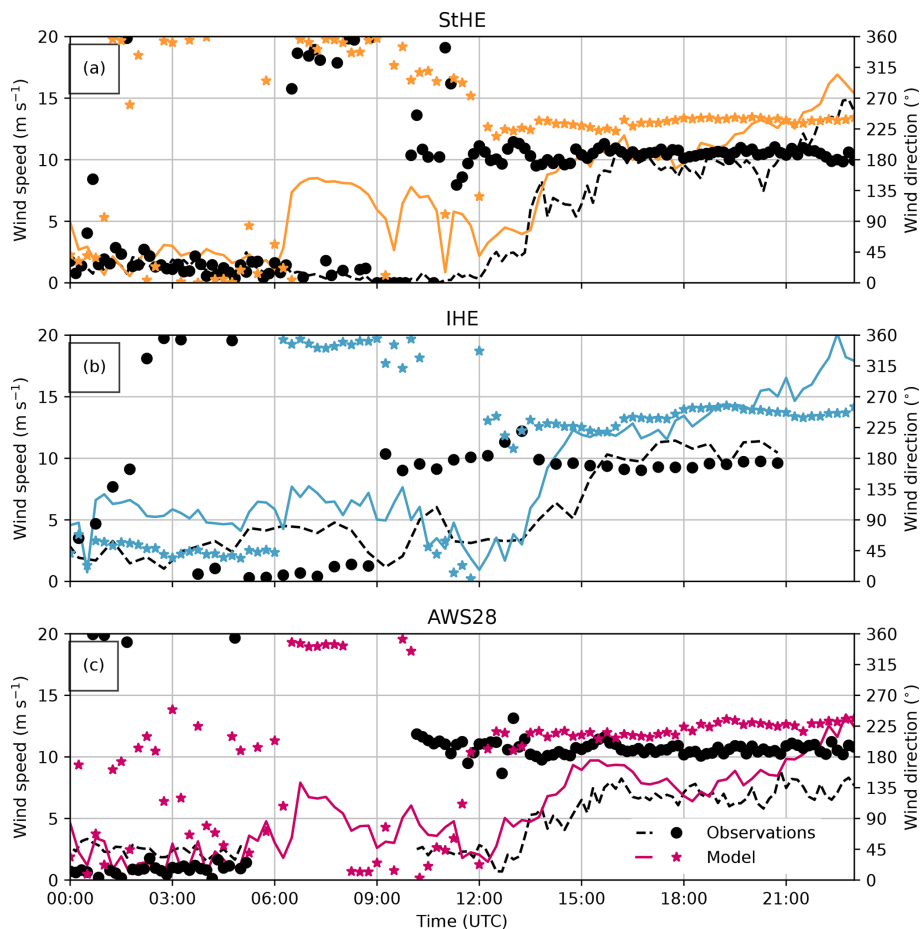


Figure 5. Time series of observations (black) from the three weather stations and corresponding model output from the closest grid point in the model (IHE: blue; StHE: orange; AWS28: pink) of wind speed (lines) and wind direction (dots/squares) on 8 February 2021. Missing values in the observations are at IHE from 21:00 UTC onward and at AWS28 between 05:45 and 11:00 UTC.

rectly comparable (i.e., the winter of 2021/22 had extremely low precipitation amounts; Voordendag et al., 2023b), the order of magnitude of compaction indicated that this process also likely occurred between scans 2 and 3 in February 2021. Furthermore, similar amounts of compaction are observed on other glaciers and snowpacks (Gugerli et al., 2019; Koch et al., 2019; Voordendag et al., 2021a). When we apply the compaction rates to the 0.28 m of fresh snow in the case study period, we find that between 0.018 and 0.071 m of the surface elevation decrease can likely be attributed to compaction.

We now utilize the model output for further process understanding with a *qualitative* analysis of the modeled snowpack. This allows us to understand possible processes governing snowpack formation; therefore we start with snow redistribution at point scale. In the model, snow redistribution only occurs when the parameterized friction threshold velocity is exceeded by the current friction velocity, and this value depends on the snow density (Eq. 8). Snow drift and subsequent redistribution are therefore only simulated after the increase in the wind speed to more than 10 m s^{-1} after

14:00 UTC. The simulated snow redistribution is found to be -0.022 m at IHE, -0.014 m at StHE, and -0.003 m at AWS28 at the end of the simulation period (Fig. 6a). The differences between the weather stations are directly related to the higher wind speeds at IHE and StHE than on the glacier at AWS28 (Fig. 5). Furthermore, it is interesting to note that the onset of snow drift initially leads to mass loss at all stations, including at AWS28; however, snow drift briefly accumulates snow again after 18:00 UTC, while at the end of the simulation, the overall effect of snow drift is mass loss. At the other two stations (StHE and IHE), snow drift continuously contributes to snow mass loss.

Simulated precipitation and changes in SWE give more insights into mass changes in the snowpack. The simulated pre-frontal precipitation at StHE agrees well in terms of magnitude and duration with the observed precipitation amounts (Fig. 6b). One of the differences is that the precipitation stops earlier in the model than in the observations. We conclude that the model is able to simulate the temporal pattern on the case study day successfully, albeit with a slight under-

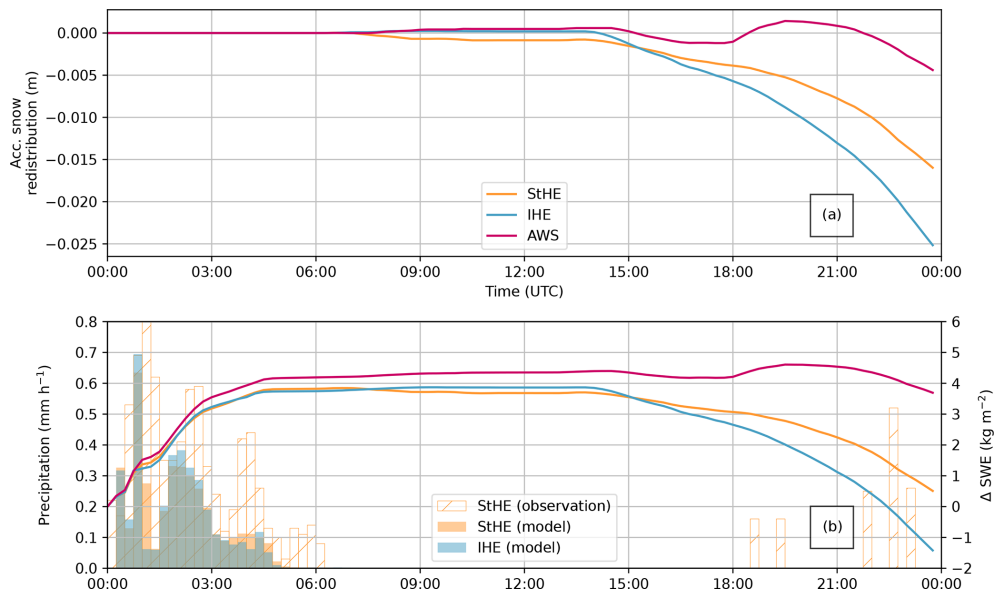


Figure 6. Time series for 8 February 2021 from the closest grid point in the model to StHE (orange), IHE (blue), and AWS28 (pink) in panel (a) of accumulated snow redistribution (relative to the start of the simulation at 00:00 UTC) and panel (b) solid precipitation (bars), as well as the relative change in snow water equivalent (Δ SWE, lines).

estimation. During the pre-frontal precipitation period, the simulated SWE also increases, with similar values for IHE and StHE but with about 0.4 kg m^{-2} higher values of SWE at AWS28 (Fig. 6b).

After snowfall ended and before snow drift started (05:00–15:00 UTC), the simulated SWE values remain constant for the three stations, indicating that the surface elevation change during this period (Fig. 4) is snow compaction. As soon as snow drift started, SWE reduces as snow gets eroded at the locations of the stations but with spatial differences between IHE, StHE, and AWS28 (Fig. 6). The ridge location IHE exhibits the largest reduction in SWE due to its exposed location over the entire simulation time. AWS28, however, shows a smaller total loss of SWE, mainly because of the sheltered location of the glacier. To summarize, SWE increased until 06:00 UTC due to solid precipitation, while SWE remained constant until 15:00 UTC as only compaction took place. After 15:00 UTC snow redistribution led to a continuous decrease in SWE at all stations. Thus, the model suggests that snow mass changes due to snow redistribution do not occur until 15:00 UTC. The increase in horizontal wind speed after 12:00 UTC triggers snow drift in the model. At AWS28 snow erosion reduces the SWE after 15:00 UTC and deposition takes place after 18:00 UTC. At the other two locations (StHE, IHE), SWE is constantly reduced by snow erosion.

Higher wind speeds result in more snow particles in the air and a higher likelihood of sublimation. Along with that, sublimation also depends on the vapor pressure in the ambient air as well as on the snow particle size. However, the values of simulated sublimation remain very small (less than 1 kg at the end of the simulation for the entire air column

over all glaciated areas in Fig. 1) throughout the rest of the simulation (not shown). Therefore, we will not discuss this process in more detail, also because the simulated sublimation contribution to snow mass loss is much smaller than the uncertainty of the TLS.

3.3 Spatial patterns of simulated snow redistribution processes

To explore the spatial patterns beyond the point scale, we analyze the simulated snow redistribution relative to the start of the simulation on 8 February at 00:00 UTC on the glacier and its surroundings (Fig. 7). The simulated snow redistribution is given in meters to be able to compare it to the surface elevation data of the TLS. The simulated wind arrows reveal wind speeds over 5 m s^{-1} during the wind-driven snow redistribution phase, and the corresponding wind direction was mostly down-glacier (southwesterly), in agreement with the observations from AWS28 (Fig. 5). In the model, the governing process for snow redistribution is erosion (Fig. 7a–d), which was especially strong at the mountain ridge northwest of HEF. This is in accordance with the webcam images, which suggested that snow erosion mainly occurred at the surrounding mountain ridges. Snow deposition (Fig. 7e–h), however, was very small compared to erosion and does not exceed 0.01 m after 24 h of simulation time. The only exception is the short phase on the glacier at AWS28, where a small increase in snow depth is noticeable around 18:00 UTC in both observations (Fig. 4) and simulations (Fig. 6).

Therefore, the final snow redistribution (Fig. 7i–l) in the model is mainly governed by erosion, but some areas on lee-

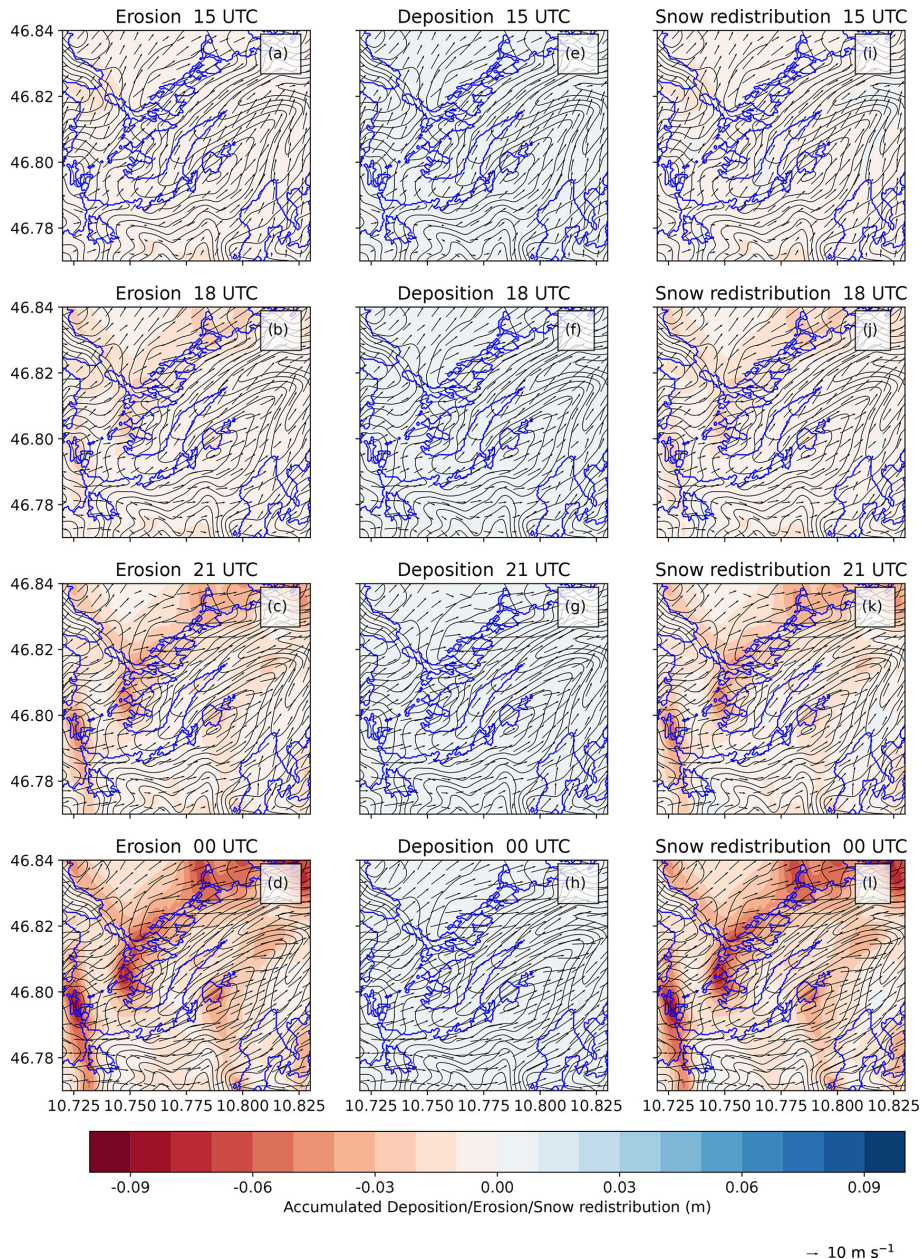


Figure 7. Simulated snow erosion (a–d), snow deposition (e–h), and the resulting net snow redistribution (i–l) in colors from 15:00, 18:00, 21:00, and 00:00 UTC. Note that all values related to snow redistribution are summed up from the start of the simulation (8 February at 00:00 UTC). Horizontal near-surface wind speed and direction are indicated by black arrows. The black contours of 100 m equidistance show the model topography, and blue contours indicate the glacier outlines.

ward slopes experience more deposition than erosion (Fig. 7i, e.g., around coordinates 46.795° N, 10.82° W). At the end of the simulation, the model suggests that around 0.09 m of snow was eroded at the mountain ridges, while at the glacier 0.03 m of snow was eroded. Although there was a weak positive signal in snow redistribution in the vicinity of AWS28 at 15:00 UTC (Figs. 6 and 7i), the sum of erosion and deposition resulted in an overall decrease in snow cover on the glacier. A main reason for this were the high wind speeds

throughout the domain; wind speeds reach up to more than 10 m s⁻¹ after 15:00 UTC. Therefore, we conclude that snow can be easily eroded and transported towards the northeast and out of the domain.

3.4 Direct comparison of simulated and observed snowpack changes

The snow depth changes from the observations (between 8 February at 10:22 UTC and 9 February at 01:42 UTC; Fig. 8a) are compared to the simulated snow redistribution (between 8 February at 10:15 UTC and 9 February at 00:00 UTC; Fig. 8b). A similar snow redistribution pattern as in the model also appears in the snow depth change observations by the TLS calculated to the model grid size of $\Delta x = 48$ m between scans 2 and 3 (Fig. 8a, b). In the simulation, most snow is redistributed away from the mountain ridges, as we also observed in the webcam images (Fig. 2) and during fieldwork campaigns. Nevertheless, the area in the accumulation zone of the glacier and at the ridges is sparsely covered by the TLS, but we observe in both the observations and the simulations that the snow is evenly distributed over the glacier tongue (e.g., around AWS28). However, when the high-resolution TLS data of Fig. 3 are upscaled to $\Delta x = 48$ m, many of the detailed structures (Fig. 3c) disappear at the model's resolution. The spatial patterns of simulated SWE (Fig. 8c) suggest a close connection to the snow redistribution patterns in Fig. 8c; the general decrease in SWE directly corresponds to the snow erosion patterns at the mountain ridges. The average simulated decrease caused by snow redistribution is -0.026 m over the glacier (Fig. 8b), which equals a decrease in SWE of -3.9 kg m $^{-2}$ (Fig. 8c) in the simulated period over HEF.

The order of magnitude of the snow depth changes from the observations is twice as large as the simulated snow redistribution due to snow drift from the simulation. The observations from the TLS do not give information on whether the snow depth changes occur due to snow drift or compaction. In Sect. 3.2.3, we found that between 0.018 and 0.071 m of the surface elevation decrease can be attributed to compaction. We quantify the amount of compaction during our case study by comparing the observed surface elevation changes and the simulated snow redistribution for each grid cell covered by the TLS system (Fig. 9a). After fitting a linear trend through these data, a relation can be detected from the simulations S and observations O :

$$O = 1.10S - 0.064. \quad (11)$$

The relation suggests that for every 0.01 m of simulated snow distribution 0.011 m of snow redistribution is observed, or in other words, the model underestimates the amount of snow redistribution by only 9.1 %. We assume that the compaction rate over the snowpack in the period of 15 h over the study area is constant, and thus the 0.064 m in Eq. (11) is related to the compaction of the snowpack. This amount of compaction is in the range of the compaction that we found for a different winter season (between 0.018 and 0.071 m of the total snowpack decrease of 0.079 m). Therefore, we assume that the average compaction rate of 0.064 m over 15 h during this study period is realistic. The distribution density (Fig. 9a) of the

observational data is more variable compared to the corresponding model results, suggesting that the model is not able to capture the full complexity of wind-driven snow redistribution. This is related to the more complex real topography compared to the smoother model topography. Furthermore, events such as avalanches are not represented in the model. Likewise, the amount of compaction is not absolutely constant over the study area, as this also depends on the snow depth and the weight of overlying layers and to a minor extent on the wind speeds. However, we assume that variability in compaction is low relative to the effects of snow drift and therefore assume it to be constant.

The observed snow redistribution amounts are subtracted from the observed surface elevation changes in Fig. 9b, which theoretically gives information on a model bias and realism of the spatial pattern of snow redistribution. However, we have to keep in mind that the TLS data include the snowpack compaction, and the amount of the observed snow redistribution is small. Adding the spatial average of the snow compaction rate from Fig. 9a to the observational dataset leads to inconsistencies; therefore, we omit this step. However, the spatial patterns of snow depth change suggest that the model is not able to capture the small-scale snow depth structure at the slopes. Yet, at the rather “flat” glacier surface (compared to the surroundings), the spatial structure of the simulated model patterns agrees well with the TLS observations. This result is relevant for the question of whether the snow drift module can be used for further glacier mass balance research.

4 Discussion

The present study combines operational TLS observations and LES for a case study to detect snow redistribution on an Alpine glacier. Since this is a small-scale phenomenon, it pushes both observations and modeling towards their boundaries.

The observations with the permanent TLS station are unique in the world. Other studies also investigated snow depth changes with TLS (e.g., Mendoza et al., 2020; Gabbud et al., 2015; Fey et al., 2019) or ALS (Helfricht et al., 2014; Grünwald and Lehning, 2011), but these studies mainly covered coarser temporal resolutions or only covered small parts of a glacier. We were able to capture snowfall and redistribution directly thereafter, but we also note that the TLS observations are at the limits of the capabilities of the system. The uncertainty of the TLS observations was estimated to be ± 0.10 m in the vertical direction with manual postprocessing in Voordendag et al. (2023a). However, the registration is even better in the vertical direction if we look at the registration of the scans at the manually selected tie objects in this study. Thus, the snow depth changes between scans 2 and 3 were measured reliably and in agreement with observations from the snow depth sensor at the glacier.

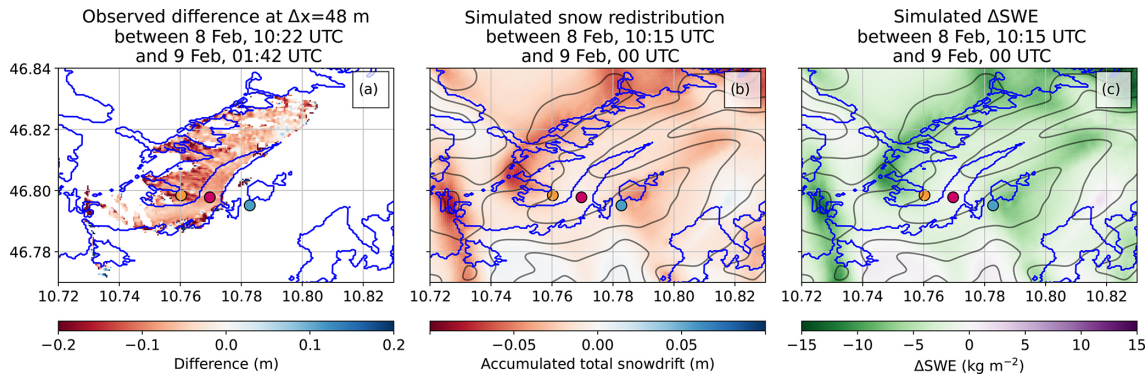


Figure 8. (a) Observed snow depth changes over HEF at $\Delta x = 48$ m between 8 February at 10:22 UTC and 9 February at 01:42 UTC, and (b) the simulated snow redistribution and (c) the simulated change in SWE between 8 February at 10:15 UTC and 9 February at 00:00 UTC. Note the different orders of magnitude in (a) and (b). The glacier outlines as used by the model are given in blue.

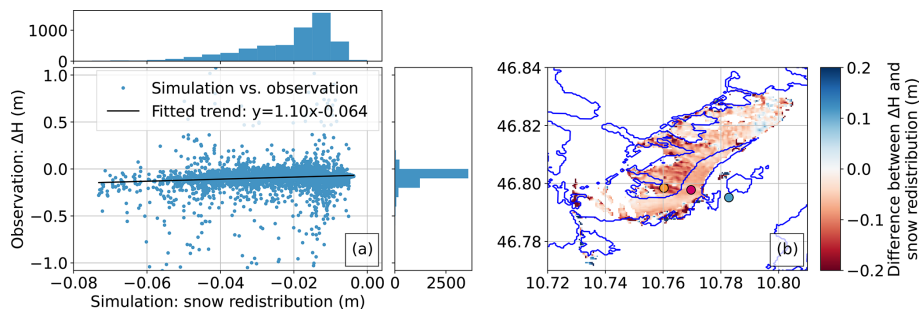


Figure 9. (a) Observed snow depth changes over HEF at $\Delta x = 48$ m between 8 February at 10:22 UTC and 9 February at 01:42 UTC plotted against the simulated snow redistribution for all the covered grid cells (blue) and the linear fit between these variables (black). The subplots show the density distribution of observed snow depth changes and simulated snow redistribution. (b) The difference between the observed snow depth changes and the simulated snow redistribution over the region of interest. The glacier outlines as used by the model are given in blue.

Still, a systematic evaluation of snow transport models with observations is challenging. In our case, the pixel-to-pixel comparison between the model and the TLS observations allowed us the first insight into model performance; however, we are aware that we are comparing different terrain geometries between model and observations. On the other hand, point observations of snow depth or blowing snow fluxes might be unrepresentative because spatial variability is especially high in complex terrain. New observational approaches such as particle tracking velocimetry (Akamit and Pomeroy, 2016) will allow for a more detailed evaluation of high-resolution snow transport models. Furthermore, bringing modern, multi-scale observational methods together (e.g., TLS, particle tracking velocimetry, snow depth, and SWE measurements) in dedicated measurement campaigns would provide excellent test beds for snow model validation.

Modeling small-scale boundary layer processes over mountainous topography is still a challenge for an NWP model like WRF, as discussed in the previous summer study by Goger et al. (2022). However, compared to the summer

study, the model simulated even more realistic wind patterns over the glacier and its surroundings. Therefore, we assume that no model bias emerges due to erratic wind patterns. Still, we have to keep in mind that these promising simulation results only apply to our case study and can be different for other time periods or locations. The simulated snow redistribution is realistic in terms of spatial structure. However, the processes at smaller scales are smoothed out, which is due to the horizontal resolution of 48 m and the smoothed model topography restricted by numerical stability. The model topography limits the slope angles to a maximum of 35° , and thus the model topography clearly deviates from real topography. In agreement with the TLS acquisitions, the simulations show that snow is eroded mostly at the ridges and that the snowpack at the glacier is sheltered and less affected by snow erosion.

High wind speeds immediately redistribute freshly deposited snow again, until it is transported out of the domain; therefore, erosion strongly dominates. Also, the very small-scale snow redistribution areas (Fig. 3c) cannot be captured at a $\Delta x = 48$ m, since Mott and Lehning (2010) noted that

$\Delta x = 10$ m or less would be necessary to calculate the small-scale deposition patterns we observed with the TLS on the glacier. Still, we assume that the general snow redistribution patterns are well-simulated, as the model captures the larger snow redistribution at the mountain ridges and smaller snow redistribution and lower wind speeds at the less exposed parts of the glacier in agreement with weather station and TLS observations.

One of the advantages of the presented snow drift module in WRF is its simplicity compared to fully coupled atmospheric and snow models (Vionnet et al., 2013; Sharma et al., 2023) because our snow drift scheme is embedded within the established modules of the WRF modeling system. However, coupling to grain-scale snow models (Vionnet et al., 2013; Sharma et al., 2023) can, of course, provide more detailed information on snowpack evolution, and full feedback (fluxes, temperature, humidity) between the atmosphere and the snowpack is possible. In our setup, the feedback of the atmosphere by the snow drift module consists of the impact of snow sublimation on the temperature and special humidity of the atmosphere aloft (Saigger et al., 2023). Furthermore, employing a full physics-based atmospheric model at high resolution provides high-resolution input data for the land-surface model. This poses an advantage compared to completely uncoupled hydrological systems (e.g., Marsh et al., 2020; Quéno et al., 2023; Baron et al., 2023), which rely on input from downscaled data, which can also be challenging over complex topography. The snow drift module is coupled to the WRF code and the land-surface scheme Noah-MP. Nevertheless, Noah-MP provides only three layers in the snowpack, whereas physical multi-layer snow models, such as SNOWPACK (Lehning et al., 1999), are able to simulate more layers and include a more realistic representation of physical snowpack processes. However, with the aim to investigate the contribution of snow redistribution, it is only necessary to calculate the surface shear stress u_{th} (Eq. 8) depending on the snow density of the upper layer in our snow drift module. The initialization of the snowpack in our simulation is simplified, as the inner domain of the model is initialized with fresh snow only because the computationally expensive LES cannot be run with a long spinup time for snowpack initialization. Thus, the model lacks accurate information on the long-term snowpack evolution. In nature, the lower layers of the snow are compressed, but the upper layer with fresh snow is still uncompressed. It is more likely that snow drift takes place on an uncompressed, fresh snowpack rather than on a dense snowpack. We consider the snow initialization in the model unproblematic for this case study, as in both nature and simulations only the fresh snow is eroded. In the model, snow compaction is calculated following Anderson (1976). The results of this snow compaction (not shown) are overestimated because the model is initialized with a snowpack entirely consisting of fresh snow (>2 m of fresh snow), enabling high compaction rates, whereas in nature there is only the 0.48 m of fresh snow on

top of older snow layers available for compaction. Also, the amount of snow at the glacier can be derived with DEM differencing of TLS scans between October 2020 and February 2021, but any of the physical properties of the snowpack, such as surface temperature or density, remain illusive, which makes a realistic initialization also not viable. However, we found realistic amounts of wind-driven snow redistribution in our simulations, and we therefore conclude that a three-layer model for the snowpack is sufficient to qualitatively assess wind-driven snow redistribution.

Wind-driven snow redistribution contributes to the glacier mass balance (Dadic et al., 2010), and for this specific case study, snow redistribution has a negative effect on the glacier mass balance of HEF. In the simulation -3.9 kg m^{-2} of snow is blown away from the glacier and out of the domain during the simulation period. We only focused on one case study, as the time period was characterized by low wind speeds during snowfall and higher wind speeds with snow redistribution afterwards. Furthermore, AWS28 was installed at the glacier, and the second scan was taken directly after snowfall. It is clear that we are unable to determine the seasonal contribution by snow redistribution to the glacier mass balance with this single case study. Further research is needed to investigate this seasonal contribution using our extensive TLS dataset, preferably also to investigate snow redistribution patterns under different prevalent wind directions (e.g., southerly or northwesterly). Our study shows that a fresh snowfall event and a rapid increase in wind speeds directly thereafter are favorable conditions for snow drift to occur; therefore, snow drift is likely to be present mostly in connection with frontal passages or downslope of windstorms.

Finally, although the installation of a permanent TLS station in remote mountainous terrain is a logistical challenge, the WRF model setup could be applied to any location worldwide. Therefore, our model setup can also be utilized for snow redistribution studies at other glaciated areas. In our current setup, the horizontal resolution is rather high due to the highly complex terrain of our area of interest ($\Delta x = 48$ m). Still, our setup can also be applied with coarser grid spacing over large ice sheets over Greenland or Antarctica for seasonal runs.

5 Conclusions

In this study, we introduced unique TLS scans to validate large-eddy simulations with the WRF model for quantifying the effect of snow redistribution over Hintereisferner, a major Alpine glacier in the Austrian Alps. For this purpose, we present a case study between 6 and 9 February 2021, where multiple TLS scans and additional observations of wind speeds and snow depth on the glacier are available. Webcam imagery revealed snow drift in the area. With this rich observational dataset, we evaluated large-eddy simulations at $\Delta x = 48$ m with the WRF model including a newly

implemented snowdrift module. Our major findings are summarized as follows:

- Surface elevation changes due to snowfall and snow redistribution are observed with three TLS scans between 6 February at 01:42 UTC and 9 February at 01:42 UTC in 2021. Simulations were performed for 8 February and run for 24 h. The combination of high-resolution observations and simulations at HEF is able to capture the glacier-wide snow redistribution patterns.
- The TLS scans can deliver information on typical snow redistribution patterns. They show spatial heterogeneity, while on the glacier the patterns are less prominent than on the orographic left slope.
- Observations with the TLS show a glacier-wide spatially averaged decrease of 0.079 m of the snowpack in the 15 h directly after the snowfall. This reduction in the snow depth is a combination of snow compaction and snow redistribution.
- The large-eddy simulations with the WRF model at $\Delta x = 48$ m simulated the wind patterns at the glacier exceptionally well, and a newly implemented snow drift module allows a detailed comparison with the TLS acquisitions. The simulated integrated glacier-wide snow redistribution is spatially 0.026 m on average. The snow redistribution patterns are captured in a realistic manner compared to the observations.
- A qualitative inspection of the simulation results reveals that snow is mostly eroded on the surrounding mountain ridges, while the glacier itself is in a sheltered location and experiences less snow redistribution. The model is able to simulate snow redistribution in a reasonable way, given that the model topography is still smoothed at $\Delta x = 48$ m; therefore simulated snow redistribution is smoother than in nature.
- We can estimate the mean snow compaction over 15 h from the observed surface elevation changes and the simulated snow redistribution during this case study with linear regression analysis. Averaged snow compaction is found to be 0.064 m, and the model underestimates snow redistribution by 9.1 %.
- Snow redistribution has a negative effect on the glacier mass balance in this case study with a simulated mass decrease of -3.9 kg m^{-2} in 24 h. However, the contribution of these snow amounts to the seasonal glacier mass balance remains illusive as this study only covers one case study with a specific wind pattern, but this will be the subject of further research.
- The operational high-resolution observations of surface elevation changes at HEF with the permanent TLS station are currently unique in the world. To obtain similar

datasets at other glaciers, similar measurement systems would have to be installed there.

- The WRF model setup with the snow drift module produces reasonable results and can be applied to any other location in the world, when high-resolution static and meteorological input data are available for the location of interest.

This study investigated the impact of snow distribution over a major Alpine glacier. Snow redistribution patterns depend on the wind field and the local topography; therefore, our work shows the potential impact of small-scale boundary layer processes on glaciers' mass balance. Further case studies at HEF but also at other mountain glaciers would shed more light on the impact of wind-driven snow distribution on glaciers' mass balance. Furthermore, more detailed information of the wind fields and the snowpack will benefit distributed glacier mass balance models such as COSIPY (Sauter et al., 2020).

Code and data availability. The snow drift module for WRF can be found in the following GitHub repository of Manuel Saigger: <https://github.com/manuelsaigger/WRFsnowdrift> (last access: 15 February 2024; DOI: <https://doi.org/10.5281/zenodo.10654680>, Saigger, 2024). TLS data are available upon request from ACINN/Rainer Prinz, and meteorological data can be downloaded from <https://acinn-data.uibk.ac.at/pages/station-list.html> (ACINN, 2024). Simulation output is available upon request from Brigitta Goger.

Author contributions. AV selected the case study period and conducted and postprocessed the TLS observations. BG conducted the WRF simulations and analyzed the model output. AV and BG wrote the original manuscript. RP oversaw the meteorological and mass balance observations at HEF. TS developed the snow drift module and implemented it in the model code, while the code is currently maintained by MS. GK, TM, and TS conceived the project idea and oversaw the entire progress of the project. All authors contributed to the manuscript and improved it where necessary.

Competing interests. At least one of the (co-)authors is a member of the editorial board of *The Cryosphere*. The peer-review process was guided by an independent editor, and the authors also have no other competing interests to declare.

Disclaimer. Publisher's note: Copernicus Publications remains neutral with regard to jurisdictional claims made in the text, published maps, institutional affiliations, or any other geographical representation in this paper. While Copernicus Publications makes every effort to include appropriate place names, the final responsibility lies with the authors.

Acknowledgements. This work is part of the project “Measuring and modeling snow cover dynamics at high resolution for improving distributed mass balance research on mountain glaciers”, a joint project fully funded by the Austrian Science Foundation (FWF; project number I 3841-N32) and the Deutsche Forschungsgemeinschaft (DFG; project number SA 2339/7-1). The computational results presented have been achieved using the Vienna Scientific Cluster (VSC) under project number 71434. Christina Schmid is acknowledged for the initial implementation of the snow drift module in WRF. We would like to thank Wolfgang Gurgiser and Philipp Vettori for their assistance in installing weather stations on and around HEF. Christian Georges, Christoph Klug, and Rudolf Sailer facilitated the TLS setup. We thank Nora Helbig for editing our article and the two referees for their thoughtful comments leading to a substantial improvement of the manuscript.

Financial support. This research has been supported by the Austrian Science Fund (grant no. I3841-N32, <https://doi.org/10.55776/I3841>) and the Deutsche Forschungsgemeinschaft (grant no. SA 2339/7-1).

Review statement. This paper was edited by Nora Helbig and reviewed by Sergi Gonzalez and Matthieu Lafaysse.

References

- ACINN: ACINN Stations, Department for Atmospheric and Cryospheric Sciences, Universität Innsbruck [data set], <https://acinn-data.uibk.ac.at/pages/station-list.html>, last access: 19 February 2024.
- Aksamit, N. O. and Pomeroy, J. W.: Near-surface snow particle dynamics from particle tracking velocimetry and turbulence measurements during alpine blowing snow storms, *The Cryosphere*, 10, 3043–3062, <https://doi.org/10.5194/tc-10-3043-2016>, 2016.
- Anderson, E. A.: A point energy and mass balance model of a snow cover, NOAA technical report NWS, 19, United States, National Weather Service, <https://repository.library.noaa.gov/view/noaa/6392> (last access: 13 February 2024), 1976.
- Arduini, G., Balsamo, G., Dutra, E., Day, J. J., Sandu, I., Boussetta, S., and Haiden, T.: Impact of a Multi-Layer Snow Scheme on Near-Surface Weather Forecasts, *J. Adv. Model. Earth Sy.*, 11, 4687–4710, <https://doi.org/10.1029/2019MS001725>, 2019.
- Baron, M., Haddjeri, A., Lafaysse, M., Le Toumelin, L., Vionnet, V., and Fructus, M.: SnowPappus v1.0, a blowing-snow model for large-scale applications of Crocus snow scheme, *Geosci. Model Dev. Discuss.* [preprint], <https://doi.org/10.5194/gmd-2023-43>, in review, 2023.
- Beniston, M., Farinotti, D., Stoffel, M., Andreassen, L. M., Coppola, E., Eckert, N., Fantini, A., Giacona, F., Hauck, C., Huss, M., Huwald, H., Lehning, M., López-Moreno, J.-I., Magnusson, J., Marty, C., Morán-Tejeda, E., Morin, S., Naaim, M., Provenzale, A., Rabatel, A., Six, D., Stötter, J., Strasser, U., Terzago, S., and Vincent, C.: The European mountain cryosphere: a review of its current state, trends, and future challenges, *The Cryosphere*, 12, 759–794, <https://doi.org/10.5194/tc-12-759-2018>, 2018.
- Blümcke, A. and Hess, H.: Untersuchungen am Hintereisferner, *Zeitschrift des deutschen und österreichischen Alpenvereins*, https://opac.geologie.ac.at/ais312/dokumente/AV_001_2.pdf (last access: 13 February 2024), 1899.
- Cogley, J. G., Hock, R., Rasmussen, L., Arendt, A., Bauder, A., Braithwaite, R., Jansson, P., Kaser, G., Möller, M., Nicholson, L., and Zemp, M.: Glossary of glacier mass balance and related terms, IHP-VII technical documents in hydrology, 86, https://wgms.ch/downloads/Cogley_et_al_2011.pdf (last access: 13 February 2024), 2011.
- Colle, B. A., Smith, R. B., and Wesley, D. A.: Theory, Observations, and Predictions of Orographic Precipitation, in: *Mountain Weather Research and Forecasting*, edited by Chow, F. K., De Wekker, S. F. J., and Snyder, B. J., Springer Atmospheric Sciences, Springer Netherlands, 291–344, ISBN 978-94-007-4097-6, 978-94-007-4098-3, https://doi.org/10.1007/978-94-007-4098-3_6, 2013.
- Colli, M., Lanza, L., Barbera, P. L., and Chan, P.: Measurement accuracy of weighing and tipping-bucket rainfall intensity gauges under dynamic laboratory testing, *Atmos. Res.*, 144, 186–194, <https://doi.org/10.1016/j.atmosres.2013.08.007>, 2014.
- Copernicus Climate Change Service (C3S): European State of the Climate 2022, <https://doi.org/10.24381/GVAF-H066>, 2023.
- Cremona, A., Huss, M., Landmann, J. M., Borner, J., and Farinotti, D.: European heat waves 2022: contribution to extreme glacier melt in Switzerland inferred from automated ablation readings, *The Cryosphere*, 17, 1895–1912, <https://doi.org/10.5194/tc-17-1895-2023>, 2023.
- Dadic, R., Mott, R., Lehning, M., and Burlando, P.: Wind influence on snow depth distribution and accumulation over glaciers, *J. Geophys. Res.-Earth*, 115, F01012, <https://doi.org/10.1029/2009JF001261>, 2010.
- Deardorff, J. W.: Stratocumulus-capped mixed layers derived from a three-dimensional model, *Bound.-Lay. Meteorol.*, 18, 495–527, <https://doi.org/10.1007/BF00119502>, 1980.
- ESA: Land Cover CCI Product User Guide Version 2., ESA [data set], https://maps.elie.ucl.ac.be/CCI/viewer/download/ESACCI-LC-Ph2-PUGv2_2.0.pdf (last access: 13 February 2024), 2017.
- European Environmental Agency: Copernicus Land Service – Pan-European Component: CORINE Land Cover, EEA [data set], <https://doi.org/10.2909/a84ae124-c5c5-4577-8e10-511bfe55cc0d>, 2017.
- Fey, C., Schattan, P., Helfricht, K., and Schöber, J.: A compilation of multitemporal TLS snow depth distribution maps at the Weisssee snow research site (Kaunertal, Austria), *Water Resour. Res.*, 55, 5154–5164, <https://doi.org/10.1029/2019wr024788>, 2019.
- Filhol, S. and Sturm, M.: Snow bedforms: A review, new data, and a formation model, *J. Geophys. Res.-Earth*, 120, 1645–1669, <https://doi.org/10.1002/2015jf003529>, 2015.
- Fischer, M., Huss, M., Kummert, M., and Hoelzle, M.: Application and validation of long-range terrestrial laser scanning to monitor the mass balance of very small glaciers in the Swiss Alps, *The Cryosphere*, 10, 1279–1295, <https://doi.org/10.5194/tc-10-1279-2016>, 2016.
- Fox-Kemper, B., Hewitt, H., Xiao, C., Aðalgeirsdóttir, G., Drijfhout, S., Edwards, T., Golledge, N., Hemer, M., Kopp, R., Krinner, G., Mix, A., Notz, D., Nowicki, S., Nurhati, I., Ruiz, L., Sallée, J.-B., Slangen, A., and Yu, Y.: Climate Change

- 2021: The Physical Science Basis. Contribution of Working Group I to the Sixth Assessment Report of the Intergovernmental Panel on Climate Change, chap. Ocean, Cryosphere and Sea Level Change, Cambridge University Press, 1211–1362, <https://doi.org/10.1017/9781009157896.011>, 2021.
- Frei, C. and Schär, C.: A precipitation climatology of the Alps from high-resolution rain-gauge observations, *Int. J. Climatol.*, 18, 873–900, [https://doi.org/10.1002/\(SICI\)1097-0088\(19980630\)18:8<873::AID-JOC255>3.0.CO;2-9](https://doi.org/10.1002/(SICI)1097-0088(19980630)18:8<873::AID-JOC255>3.0.CO;2-9), 1998.
- Gabbud, C., Micheletti, N., and Lane, S. N.: Lidar measurement of surface melt for a temperate Alpine glacier at the seasonal and hourly scales, *J. Glaciol.*, 61, 963–974, <https://doi.org/10.3189/2015jog14j226>, 2015.
- Gerber, F., Lehning, M., Hoch, S. W., and Mott, R.: A close-ridge small-scale atmospheric flow field and its influence on snow accumulation, *J. Geophys. Res.-Atmos.*, 122, 7737–7754, <https://doi.org/10.1002/2016JD026258>, 2017.
- Gerber, F., Besic, N., Sharma, V., Mott, R., Daniels, M., Gabella, M., Berne, A., Germann, U., and Lehning, M.: Spatial variability in snow precipitation and accumulation in COSMO–WRF simulations and radar estimations over complex terrain, *The Cryosphere*, 12, 3137–3160, <https://doi.org/10.5194/tc-12-3137-2018>, 2018.
- Gerber, F., Sharma, V., and Lehning, M.: CRYOWRF–Model Evaluation and the Effect of Blowing Snow on the Antarctic Surface Mass Balance, *J. Geophys. Res.-Atmos.*, 128, e2022JD037744, <https://doi.org/10.1029/2022JD037744>, 2023.
- Goger, B., Rotach, M. W., Gohm, A., Fuhrer, O., Stiperski, I., and Holtzlag, A. A. M.: The Impact of Three-Dimensional Effects on the Simulation of Turbulence Kinetic Energy in a Major Alpine Valley, *Bound.-Lay. Meteorol.*, 168, 1–27, <https://doi.org/10.1007/s10546-018-0341-y>, 2018.
- Goger, B., Rotach, M. W., Gohm, A., Stiperski, I., Fuhrer, O., and de Morsier, G.: A New Horizontal Length Scale for a Three-Dimensional Turbulence Parameterization in Mesoscale Atmospheric Modeling over Highly Complex Terrain, *J. Appl. Meteor. Climatol.*, 58, 2087–2102, <https://doi.org/10.1175/JAMC-D-18-0328.1>, 2019.
- Goger, B., Stiperski, I., Nicholson, L., and Sauter, T.: Large-eddy simulations of the atmospheric boundary layer over an Alpine glacier: Impact of synoptic flow direction and governing processes, *Q. J. Roy. Meteor. Soc.*, 148, 1319–1343, <https://doi.org/10.1002/qj.4263>, 2022.
- Goodison, B. E., Louie, P. Y., and Yang, D.: WMO solid precipitation measurement intercomparison, World Meteorological Organization, <https://library.wmo.int/idurl/4/28336> (last access: 13 February 2024), 1998.
- Gordon, M., Biswas, S., Taylor, P. A., Hanesiak, J., Albarran-Melzer, M., and Fargey, S.: Measurements of drifting and blowing snow at Iqaluit, Nunavut, Canada during the star project, *Atmos. Ocean*, 48, 81–100, <https://doi.org/10.3137/AO1105.2010>, 2010.
- Gouttevin, I., Vionnet, V., Seity, Y., Boone, A., Lafaysse, M., Deliot, Y., and Merzisen, H.: To the Origin of a Wintertime Screen-Level Temperature Bias at High Altitude in a Kilometric NWP Model, *J. Hydrometeorol.*, 24, 53–71, <https://doi.org/10.1175/JHM-D-21-0200.1>, 2023.
- Grünewald, T. and Lehning, M.: Altitudinal dependency of snow amounts in two small alpine catchments: can catchment-wide snow amounts be estimated via single snow or precipitation stations?, *Ann. Glaciol.*, 52, 153–158, <https://doi.org/10.3189/172756411797252248>, 2011.
- Grünewald, T., Bühler, Y., and Lehning, M.: Elevation dependency of mountain snow depth, *The Cryosphere*, 8, 2381–2394, <https://doi.org/10.5194/tc-8-2381-2014>, 2014.
- Gugerli, R., Salzmann, N., Huss, M., and Desilets, D.: Continuous and autonomous snow water equivalent measurements by a cosmic ray sensor on an alpine glacier, *The Cryosphere*, 13, 3413–3434, <https://doi.org/10.5194/tc-13-3413-2019>, 2019.
- Guo, Y.-R. and Chen, S.: Terrain and land use for the fifth-generation Penn State/NCAR Mesoscale Modeling System (MM5): Program TERRAIN, Tech. Rep., <https://doi.org/10.5065/D68C9T67>, 1994.
- Helfricht, K., Kuhn, M., Keuschnig, M., and Heilig, A.: Lidar snow cover studies on glaciers in the Ötztal Alps (Austria): comparison with snow depths calculated from GPR measurements, *The Cryosphere*, 8, 41–57, <https://doi.org/10.5194/tc-8-41-2014>, 2014.
- Hock, R., Rasul, G., Adler, C., Cáceres, B., Gruber, S., Hirabayashi, Y., Jackson, M., Kääh, A., Kang, S., Kutuzov, S., Milner, A., Molau, U., Morin, S., Orlove, B., and Steltzer, H.: High Mountain Areas, in: IPCC Special Report on the Ocean and Cryosphere in a Changing Climate, edited by: Pörtner, H.-O., Roberts, D., Masson-Delmotte, V., Zhai, P., Tignor, M., Poloczanska, E., Mintenbeck, K., Alegría, A., Nicolai, M., Okem, A., Petzold, J., Rama, B., and Weyer, N., Cambridge University Press, 131–202, <https://doi.org/10.1017/9781009157964.004>, 2022.
- Hugonnet, R., McNabb, R., Berthier, E., Menounos, B., Nuth, C., Girod, L., Farinotti, D., Huss, M., Dussaillant, I., Brun, F., and Kääh, A.: Accelerated global glacier mass loss in the early twenty-first century, *Nature*, 592, 726–731, <https://doi.org/10.1038/s41586-021-03436-z>, 2021.
- Huss, M. and Hock, R.: Global-scale hydrological response to future glacier mass loss, *Nat. Clim. Change*, 8, 135–140, <https://doi.org/10.1038/s41558-017-0049-x>, 2018.
- Iacono, M. J., Delamere, J. S., Mlawer, E. J., Shephard, M. W., Clough, S. A., and Collins, W. D.: Radiative forcing by long-lived greenhouse gases: Calculations with the AER radiative transfer models, *J. Geophys. Res.-Atmos.*, 113, D13103, <https://doi.org/10.1029/2008JD009944>, 2008.
- Isotta, F. A., Frei, C., Weigluni, V., Perčec Tadić, M., Lassègues, P., Rudolf, B., Pavan, V., Cacciamani, C., Antolini, G., Ratto, S. M., Munari, M., Micheletti, S., Bonati, V., Lussana, C., Ronchi, C., Panettieri, E., Marigo, G., and Vertačnik, G.: The climate of daily precipitation in the Alps: development and analysis of a high-resolution grid dataset from pan-Alpine rain-gauge data, *Int. J. Climatol.*, 34, 1657–1675, <https://doi.org/10.1002/joc.3794>, 2013.
- Jiménez, P. A., Dudhia, J., González-Rouco, J. F., Navarro, J., Montávez, J. P., and García-Bustamante, E.: A Revised Scheme for the WRF Surface Layer Formulation, *Mon. Weather Rev.*, 140, 898–918, <https://doi.org/10.1175/MWR-D-11-00056.1>, 2012.
- Koch, F., Henkel, P., Appel, F., Schmid, L., Bach, H., Lamm, M., Prasch, M., Schweizer, J., and Mauser, W.: Retrieval of Snow Water Equivalent, Liquid Water Content, and Snow Height of Dry and Wet Snow by Combining GPS Signal Attenuation and Time Delay, *Water Resour. Res.*, 55, 4465–4487, <https://doi.org/10.1029/2018wr024431>, 2019.

- Kochanski, K., Anderson, R. S., and Tucker, G. E.: Statistical Classification of Self-Organized Snow Surfaces, *Geophys. Res. Lett.*, 45, 6532–6541, <https://doi.org/10.1029/2018gl077616>, 2018.
- Krinner, G., Derksen, C., Essery, R., Flanner, M., Hagemann, S., Clark, M., Hall, A., Rott, H., Brutel-Vuilmet, C., Kim, H., Ménard, C. B., Mudryk, L., Thackeray, C., Wang, L., Arduini, G., Balsamo, G., Bartlett, P., Boike, J., Boone, A., Chéruy, F., Colin, J., Cuntz, M., Dai, Y., Decharme, B., Derry, J., Ducharme, A., Dutra, E., Fang, X., Fierz, C., Ghattas, J., Gusev, Y., Haverd, V., Kontu, A., Lafaysse, M., Law, R., Lawrence, D., Li, W., Marke, T., Marks, D., Ménégoz, M., Nasonova, O., Nitta, T., Niwano, M., Pomeroy, J., Raleigh, M. S., Schaedler, G., Semenov, V., Smirnova, T. G., Stacke, T., Strasser, U., Svenson, S., Turkov, D., Wang, T., Wever, N., Yuan, H., Zhou, W., and Zhu, D.: ESM-SnowMIP: assessing snow models and quantifying snow-related climate feedbacks, *Geosci. Model Dev.*, 11, 5027–5049, <https://doi.org/10.5194/gmd-11-5027-2018>, 2018.
- Lehning, M., Bartelt, P., Brown, B., Russi, T., Stöckli, U., and Zimmerli, M.: SNOWPACK model calculations for avalanche warning based upon a new network of weather and snow stations, *Cold Reg. Sci. Technol.*, 30, 145–157, [https://doi.org/10.1016/s0165-232x\(99\)00022-1](https://doi.org/10.1016/s0165-232x(99)00022-1), 1999.
- Machguth, H., Paul, F., Hoelzle, M., and Haeblerli, W.: Distributed glacier mass-balance modelling as an important component of modern multi-level glacier monitoring, *Ann. Glaciol.*, 43, 335–343, <https://doi.org/10.3189/172756406781812285>, 2006.
- Marsh, C. B., Pomeroy, J. W., Spiteri, R. J., and Wheatler, H. S.: A Finite Volume Blowing Snow Model for Use With Variable Resolution Meshes, *Water Resour. Res.*, 56, e2019WR025307, <https://doi.org/10.1029/2019WR025307>, 2020.
- Marzeion, B., Jarosch, A. H., and Hofer, M.: Past and future sea-level change from the surface mass balance of glaciers, *The Cryosphere*, 6, 1295–1322, <https://doi.org/10.5194/tc-6-1295-2012>, 2012.
- Menard, C. B., Essery, R., Krinner, G., Arduini, G., Bartlett, P., Boone, A., Brutel-Vuilmet, C., Burke, E., Cuntz, M., Dai, Y., Decharme, B., Dutra, E., Fang, X., Fierz, C., Gusev, Y., Hagemann, S., Haverd, V., Kim, H., Lafaysse, M., Marke, T., Nasonova, O., Nitta, T., Niwano, M., Pomeroy, J., Schädler, G., Semenov, V. A., Smirnova, T., Strasser, U., Swenson, S., Turkov, D., Wever, N., and Yuan, H.: Scientific and Human Errors in a Snow Model Intercomparison, *B. Am. Meteorol. Soc.*, 102, E61–E79, <https://doi.org/10.1175/BAMS-D-19-0329.1>, 2021.
- Mendoza, P. A., Shaw, T. E., McPhee, J., Musselman, K. N., Revuelto, J., and MacDonell, S.: Spatial Distribution and Scaling Properties of Lidar-Derived Snow Depth in the Extratropical Andes, *Water Resour. Res.*, 56, e2020WR028480, <https://doi.org/10.1029/2020wr028480>, 2020.
- Mott, R. and Lehning, M.: Meteorological Modeling of Very High-Resolution Wind Fields and Snow Deposition for Mountains, *J. Hydrometeorol.*, 11, 934–949, <https://doi.org/10.1175/2010jhm1216.1>, 2010.
- Mott, R., Vionnet, V., and Grünwald, T.: The Seasonal Snow Cover Dynamics: Review on Wind-Driven Coupling Processes, *Front. Earth Sci.*, 6, 197, <https://doi.org/10.3389/feart.2018.00197>, 2018.
- Nakanishi, M. and Niino, H.: Development of an Improved Turbulence Closure Model for the Atmospheric Boundary Layer, *J. Meteorol. Soc. Jpn Ser. II*, 87, 895–912, <https://doi.org/10.2151/jmsj.87.895>, 2009.
- Niu, G.-Y., Yang, Z.-L., Mitchell, K. E., Chen, F., Ek, M. B., Barlage, M., Kumar, A., Manning, K., Niyogi, D., Rosero, E., Tewari, M., and Xia, Y.: The community Noah land surface model with multiparameterization options (Noah-MP): 1. Model description and evaluation with local-scale measurements, *J. Geophys. Res.-Atmos.*, 116, D12109, <https://doi.org/10.1029/2010JD015139>, 2011.
- Obleitner, F.: Climatological features of glacier and valley winds at the Hintereisferner (Ötztal Alps, Austria), *Theor. Appl. Climatol.*, 49, 225–239, <https://doi.org/10.1007/BF00867462>, 1994.
- Pomeroy, J. and Male, D.: Steady-state suspension of snow, *J. Hydrol.*, 136, 275–301, 1992.
- Prantl, H., Nicholson, L., Sailer, R., Hanzer, F., Juen, I., and Rastner, P.: Glacier Snowline Determination from Terrestrial Laser Scanning Intensity Data, *Geosciences*, 7, 60, <https://doi.org/10.3390/geosciences7030060>, 2017.
- Quéno, L., Mott, R., Morin, P., Cluzet, B., Mazzotti, G., and Jonas, T.: Snow redistribution in an intermediate-complexity snow hydrology modelling framework, *EGU Sphere* [preprint], <https://doi.org/10.5194/egusphere-2023-2071>, 2023.
- Rasmussen, R., Baker, B., Kochendorfer, J., Meyers, T., Landolt, S., Fischer, A. P., Black, J., Thériault, J. M., Kucera, P., Gochis, D., Smith, C., Nitu, R., Hall, M., Ikeda, K., and Gutmann, E.: How Well Are We Measuring Snow: The NOAA/FAA/NCAR Winter Precipitation Test Bed, *B. Am. Meteorol. Soc.*, 93, 811–829, <https://doi.org/10.1175/bams-d-11-00052.1>, 2012.
- RIEGL: RiSCAN PRO, RIEGL Laser Measurement Systems, Horn, Austria, 2.8.0 edn., RIEGL [software], <http://www.riegl.com/index.php?id=221> (last access: 13 February 2024), 2019.
- Rotach, M. W., Stiperski, I., Fuhrer, O., Goger, B., Gohm, A., Obleitner, F., Rau, G., Sfyri, E., and Vergeiner, J.: Investigating Exchange Processes over Complex Topography: The Innsbruck Box (i-Box), *B. Am. Meteorol. Soc.*, 98, 787–805, <https://doi.org/10.1175/BAMS-D-15-00246.1>, 2017.
- Saigger, M.: WRFsnowdrift (v1.0), Zenodo [data set], <https://doi.org/10.5281/zenodo.10654680>, 2024.
- Saigger, M., Sauter, T., Schmid, C., Collier, E., Goger, B., Kaser, G., Prinz, R., Voordendag, A., and Mölg, T.: Snowdrift scheme in the Weather Research and Forecasting model, *ESS Open Archive*, <https://doi.org/10.22541/essoar.169755043.33054646/v1>, 2023.
- Sauter, T., Möller, M., Finkelnburg, R., Grabiec, M., Scherer, D., and Schneider, C.: Snowdrift modelling for the Vestfonna ice cap, north-eastern Svalbard, *The Cryosphere*, 7, 1287–1301, <https://doi.org/10.5194/tc-7-1287-2013>, 2013.
- Sauter, T., Arndt, A., and Schneider, C.: COSIPY v1.3 – an open-source coupled snowpack and ice surface energy and mass balance model, *Geosci. Model Dev.*, 13, 5645–5662, <https://doi.org/10.5194/gmd-13-5645-2020>, 2020.
- Schmid, C.: Implementierung eines Schneedrftmoduls in das Weather Research and Forecasting (WRF) Modell und eine erste Evaluation, PhD thesis, Friedrich-Alexander-Universität Erlangen-Nürnberg (FAU), <https://opus4.kobv.de/opus4-fau/frontdoor/index/index/docId/17236> (last access: 13 February 2024), 2021.
- Schröder, M.: Snow Water Equivalent measured by a Cosmic Ray Neutron Sensor: A Case Study from Hintereisferner, Austria, Master's thesis, Universität Innsbruck,

- <https://ulb-dok.uibk.ac.at/ulbtirolhs/content/titleinfo/9182794> (last access: 13 February 2024), 2023.
- Sharma, V., Gerber, F., and Lehning, M.: Introducing CRYOWRF v1.0: multiscale atmospheric flow simulations with advanced snow cover modelling, *Geosci. Model Dev.*, 16, 719–749, <https://doi.org/10.5194/gmd-16-719-2023>, 2023.
- Skamarock, W. C., Klemp, J. B., Dudhia, J., Gill, D. O., Liu, Z., Berner, J., Wang, W., Powers, J. G., Duda, M. G., Barker, D. M., and Huang, X.-Y.: A Description of the Advanced Research WRF Model Version 4, Tech. Rep., NCAR Technical Note NCAR/TN-556+STR, <https://doi.org/10.5065/1dfh-6p97>, 2019.
- Smith, C. D.: Correcting the wind bias in snowfall measurements made with a Geonor T-200B precipitation gauge and alter wind shield, in: Proceedings of the 14th SMOI, San Antonio, 20, https://www.cmos.ca/uploaded/web/members/Bulletin/Vol_36/b3605.pdf#page=16 (last access: 13 February 2024), 2007.
- Stiperski, I. and Calaf, M.: Generalizing Monin-Obukhov Similarity Theory (1954) for Complex Atmospheric Turbulence, *Phys. Rev. Lett.*, 130, 124001, <https://doi.org/10.1103/PhysRevLett.130.124001>, 2023.
- Stiperski, I. and Rotach, M. W.: On the Measurement of Turbulence Over Complex Mountainous Terrain, *Bound.-Lay. Meteorol.*, 159, 97–121, <https://doi.org/10.1007/s10546-015-0103-z>, 2016.
- Stiperski, I., Katul, G. G., and Calaf, M.: Universal Return to Isotropy of Inhomogeneous Atmospheric Boundary Layer Turbulence, *Phys. Rev. Lett.*, 126, 194501, <https://doi.org/10.1103/PhysRevLett.126.194501>, 2021.
- Strasser, U., Marke, T., Braun, L., Escher-Vetter, H., Juen, I., Kuhn, M., Maussion, F., Mayer, C., Nicholson, L., Niedertscheider, K., Sailer, R., Stötter, J., Weber, M., and Kaser, G.: The Rofental: a high Alpine research basin (1890–3770 m a.s.l.) in the Ötztal Alps (Austria) with over 150 years of hydrometeorological and glaciological observations, *Earth Syst. Sci. Data*, 10, 151–171, <https://doi.org/10.5194/essd-10-151-2018>, 2018.
- Sun, S., Jin, J., and Xue, Y.: A simple snow-atmosphere-soil transfer model, *J. Geophys. Res.-Atmos.*, 104, 19587–19597, <https://doi.org/10.1029/1999JD900305>, 1999.
- Thompson, G., Field, P. R., Rasmussen, R. M., and Hall, W. D.: Explicit Forecasts of Winter Precipitation Using an Improved Bulk Microphysics Scheme. Part II: Implementation of a New Snow Parameterization, *Mon. Weather Rev.*, 136, 5095–5115, <https://doi.org/10.1175/2008MWR2387.1>, 2008.
- Thorpe, A. D. and Mason, B. J.: The evaporation of ice spheres and ice crystals, *Brit. J. Appl. Phys.*, 17, 541–548, <https://doi.org/10.1088/0508-3443/17/4/316>, 1966.
- Umek, L., Gohm, A., Haid, M., Ward, H. C., and Rotach, M. W.: Large eddy simulation of foehn-cold pool interactions in the Inn Valley during PIANO IOP2, *Q. J. Roy. Meteor. Soc.*, 147, 944–982, <https://doi.org/10.1002/qj.3954>, 2021.
- USGS: Shuttle Radar Topography Mission (SRTM) 1 Arc-Second Global Dataset, USGS [data set], <https://doi.org/10.5066/F7PR7TFT>, 2000.
- Vionnet, V., Guyomarc'h, G., Bouvet, F. N., Martin, E., Durand, Y., Bellot, H., Bel, C., and Puglièse, P.: Occurrence of blowing snow events at an alpine site over a 10-year period: Observations and modelling, *Adv. Water Resour.*, 55, 53–63, <https://doi.org/10.1016/j.advwatres.2012.05.004>, 2013.
- Vionnet, V., Martin, E., Masson, V., Guyomarc'h, G., Naaim-Bouvet, F., Prokop, A., Durand, Y., and Lac, C.: Simulation of wind-induced snow transport and sublimation in alpine terrain using a fully coupled snowpack/atmosphere model, *The Cryosphere*, 8, 395–415, <https://doi.org/10.5194/tc-8-395-2014>, 2014.
- Vionnet, V., Dombrowski-Etchevers, I., Lafaysse, M., Quéno, L., Seity, Y., and Bazile, E.: Numerical Weather Forecasts at Kilometer Scale in the French Alps: Evaluation and Application for Snowpack Modeling, *J. Hydrometeorol.*, 17, 2591–2614, <https://doi.org/10.1175/JHM-D-15-0241.1>, 2016.
- Vionnet, V., Marsh, C. B., Menounos, B., Gascoïn, S., Wayand, N. E., Shea, J., Mukherjee, K., and Pomeroy, J. W.: Multi-scale snowdrift-permitting modelling of mountain snowpack, *The Cryosphere*, 15, 743–769, <https://doi.org/10.5194/tc-15-743-2021>, 2021.
- Voordendag, A., Réveillet, M., MacDonell, S., and Lhermitte, S.: Snow model comparison to simulate snow depth evolution and sublimation at point scale in the semi-arid Andes of Chile, *The Cryosphere*, 15, 4241–4259, <https://doi.org/10.5194/tc-15-4241-2021>, 2021a.
- Voordendag, A. B., Goger, B., Klug, C., Prinz, R., Rutzinger, M., and Kaser, G.: Automated and Permanent Long-Range Terrestrial Laser Scanning in a High Mountain Environment: Setup and First Results, *ISPRS Ann. Photogramm. Remote Sens. Spatial Inf. Sci.*, V-2-2021, 153–160, <https://doi.org/10.5194/isprs-annals-V-2-2021-153-2021>, 2021b.
- Voordendag, A., Goger, B., Klug, C., Prinz, R., Rutzinger, M., Sauter, T., and Kaser, G.: Uncertainty assessment of a permanent long-range terrestrial laser scanning system for the quantification of snow dynamics on Hintereisferner (Austria), *Front. Earth Sci.*, 11, <https://doi.org/10.3389/feart.2023.1085416>, 2023a.
- Voordendag, A., Prinz, R., Schuster, L., and Kaser, G.: Brief communication: The Glacier Loss Day as an indicator of a record-breaking negative glacier mass balance in 2022, *The Cryosphere*, 17, 3661–3665, <https://doi.org/10.5194/tc-17-3661-2023>, 2023b.
- Wagner, J. S., Gohm, A., and Rotach, M. W.: The Impact of Horizontal Model Grid Resolution on the Boundary Layer Structure over an Idealized Valley, *Mon. Weather Rev.*, 142, 3446–3465, <https://doi.org/10.1175/MWR-D-14-00002.1>, 2014.
- Walter, M. T., McCool, D. K., King, L. G., Molnau, M., and Campbell, G. S.: Simple snowdrift model for distributed hydrological modeling, *J. Hydrol. Eng.*, 9, 280–287, 2004.
- Xu, C., Li, Z., Li, H., Wang, F., and Zhou, P.: Long-range terrestrial laser scanning measurements of annual and intra-annual mass balances for Urumqi Glacier No. 1, eastern Tien Shan, China, *The Cryosphere*, 13, 2361–2383, <https://doi.org/10.5194/tc-13-2361-2019>, 2019.
- Zemp, M., Hoelzle, M., and Haeberli, W.: Six decades of glacier mass-balance observations: a review of the worldwide monitoring network, *Ann. Glaciol.*, 50, 101–111, <https://doi.org/10.3189/172756409787769591>, 2009.