



This is a presentation of the following published document and is licensed under All Rights Reserved license:

**Hall, Kimberly Ellen ORCID: 0000-0002-5544-8764 and El Masri, Omar ORCID: 0000-0003-0554-590X (2023) Inclusivity and Place: Where a University and Neighbours Draw Together. In: AMPS research: Teaching Beyond the Curriculum, Focus on Pedagogy 2023, 15-17 November 2023, online.**

Official URL: <https://amps-research.com/conference/teaching-2023/>

EPrint URI: <https://eprints.glos.ac.uk/id/eprint/14048>

#### **Disclaimer**

The University of Gloucestershire has obtained warranties from all depositors as to their title in the material deposited and as to their right to deposit such material.

The University of Gloucestershire makes no representation or warranties of commercial utility, title, or fitness for a particular purpose or any other warranty, express or implied in respect of any material deposited.

The University of Gloucestershire makes no representation that the use of the materials will not infringe any patent, copyright, trademark or other property or proprietary rights.

The University of Gloucestershire accepts no liability for any infringement of intellectual property rights in any material deposited but will remove such material from public view pending investigation in the event of an allegation of any such infringement.

PLEASE SCROLL DOWN FOR TEXT.

# INCLUSIVITY AND PLACE: WHERE A UNIVERSITY AND NEIGHBOURS DRAW TOGETHER

/DR OMAR EL MASRI  
/KIMBERLY HALL  
/LISA BRINICOMBE  
/JESSICA MURE  
/EMMA PARKINSON









# BACKGROUND



ARTIST: POGO – CHELTENHAM ST PAULS NEIGHBOURHOOD

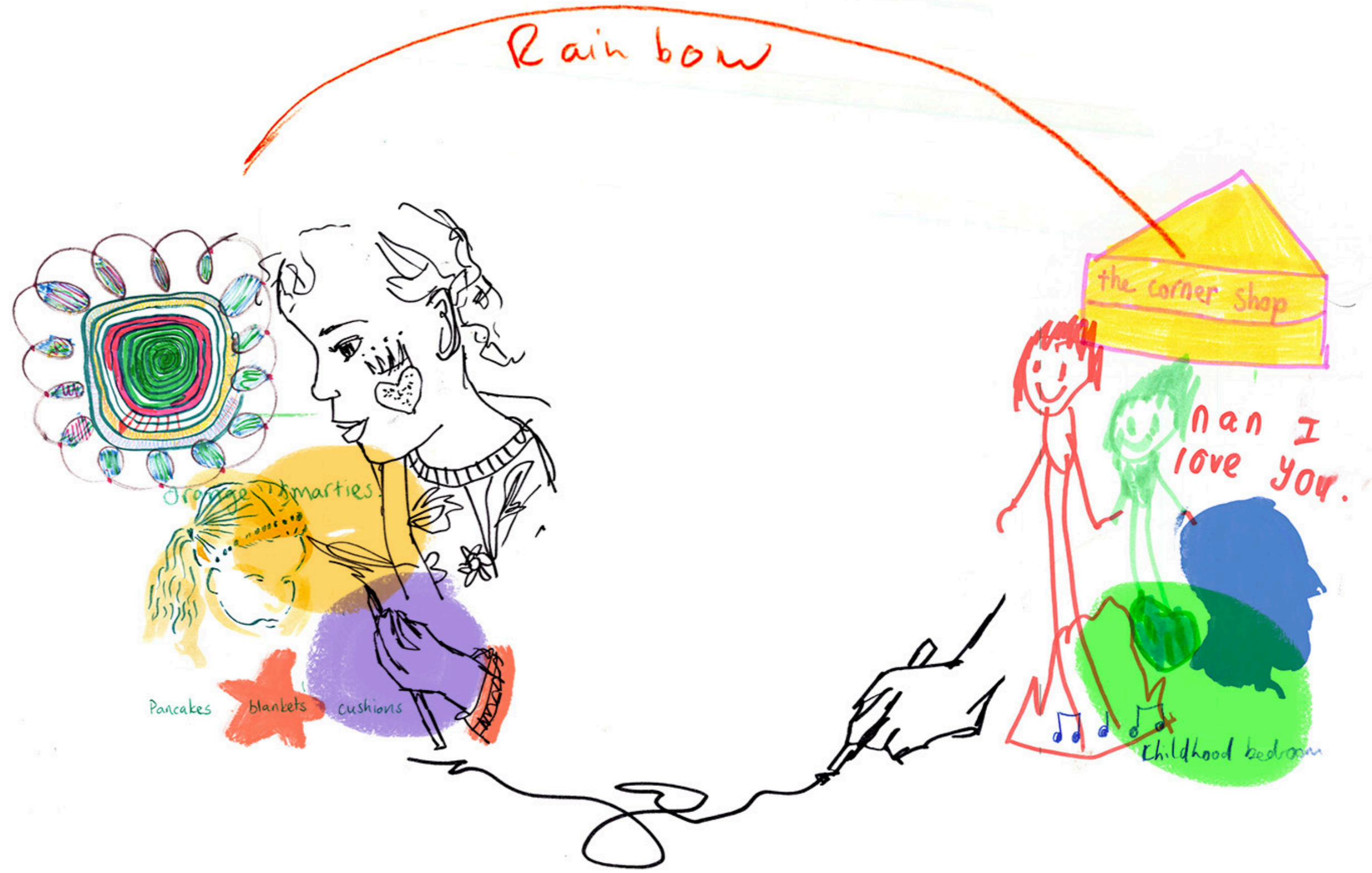


LEFT: ST PAUL'S NEIGHBOURHOOD; BELOW: INKIE'S MURAL ON ST PAUL'S ROAD PAYS TRIBUTE TO THE AREA AND TO JULIAN A LOCAL SHOPKEEPER WHO PASSED AWAY RECENTLY





SOCIAL SCIENCES  
(OMAR)  
+  
ILLUSTRATION (KIM)  
=  
NEW DIRECTIONS  
FOR BOTH OF US





**PARTICIPATORY ARTS-BASED RESEARCH  
SOCIALLY ENGAGED ART  
PARTICIPATORY ACTION RESEARCH  
PRACTICE AS RESEARCH**

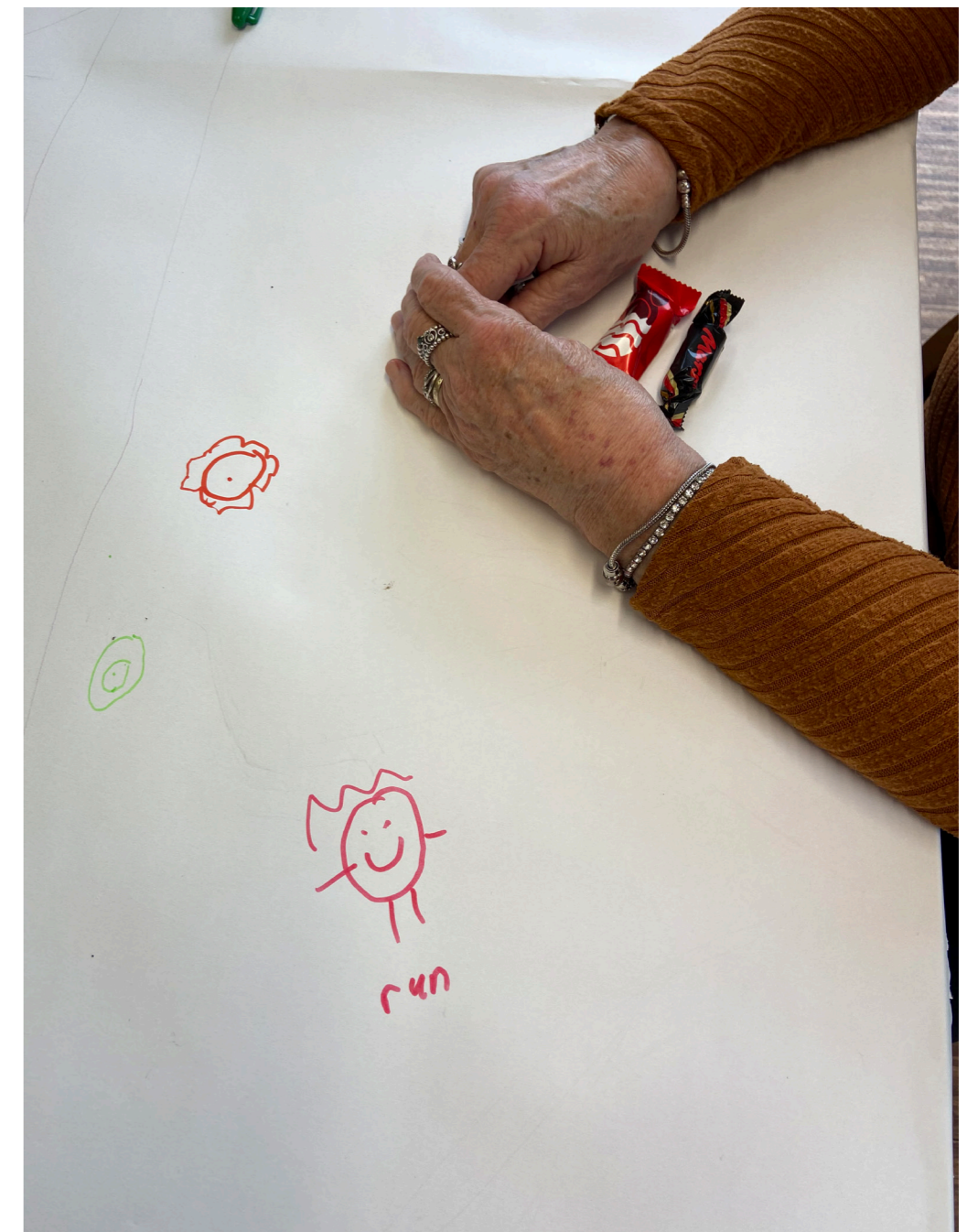
WORKING  
SOCIOLOGICALLY  
AND ARTISTICALLY  
ABOUT PROBLEMS  
ON INCLUSIVITY



**PARTICIPANTS AT WILSON MUSEUM MEMORY CAFÉ EVENT**



# OUR METHODS



COLLABORATIVE MAP MAKING WORKSHOP SESSION MARCH 2023 AT ST PAUL'S HUB



WE FOCUSED ON DRAWING AS OUR METHOD OF LEARNING,  
COMMUNICATION, AND COMMUNITY-BUILDING OF THIS PROJECT.

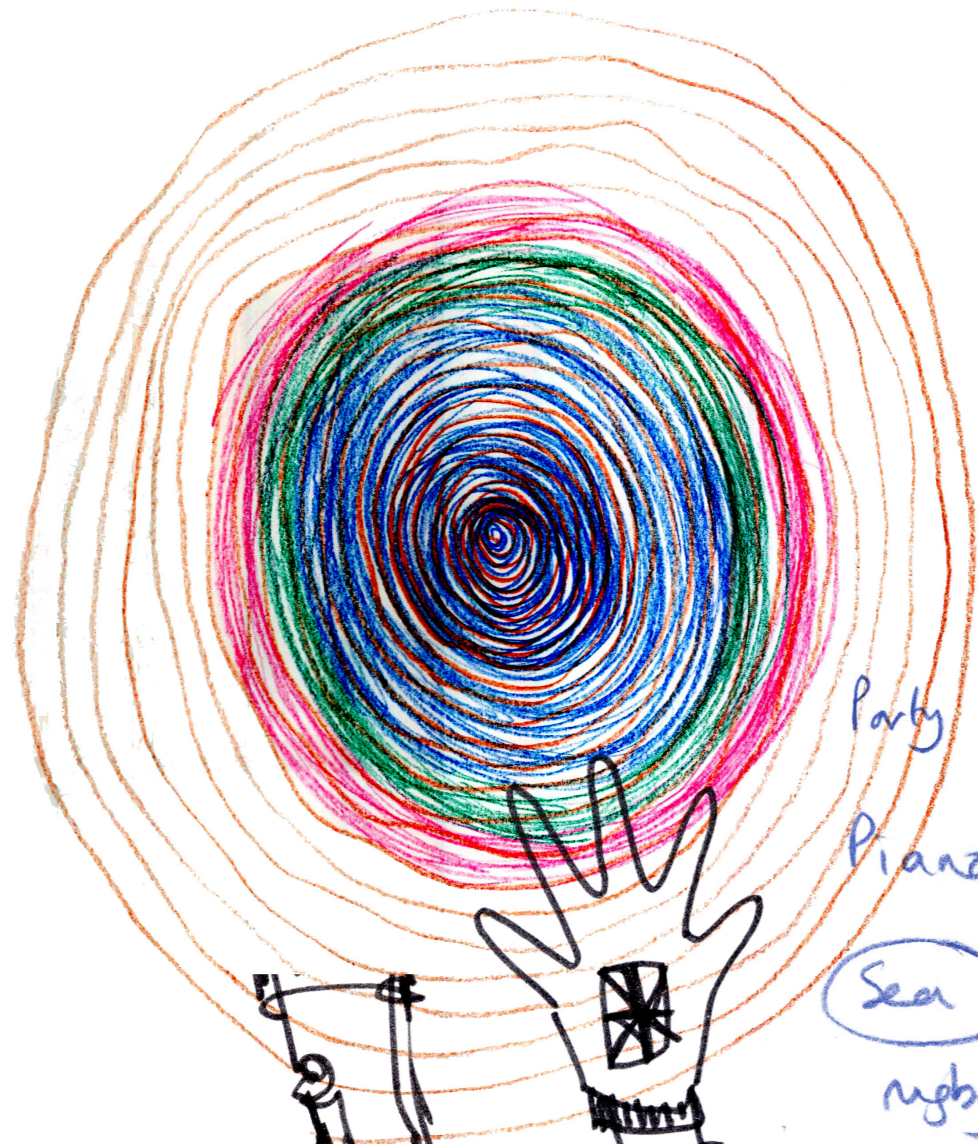




ENGAGING WITH VISUAL OR DRAWN COMMUNICATION, RATHER THAN WRITTEN CAN ALLOW FOR NEW, DEEPER AND MORE INCLUSIVE UNDERSTANDINGS TO DEVELOP.







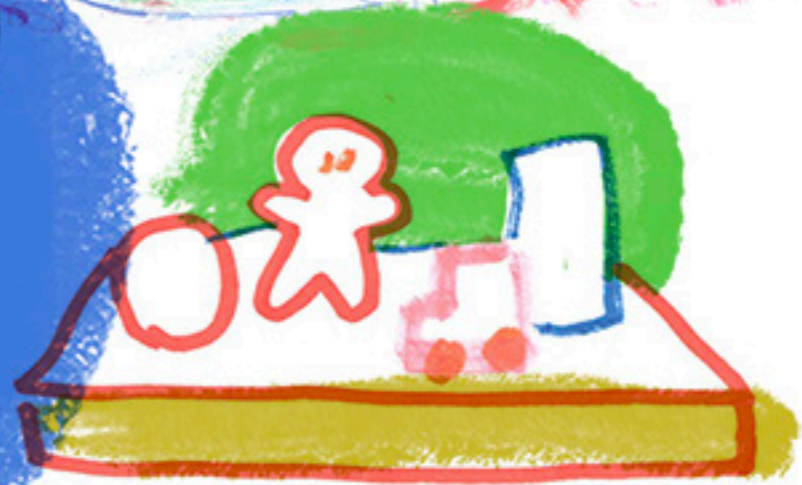
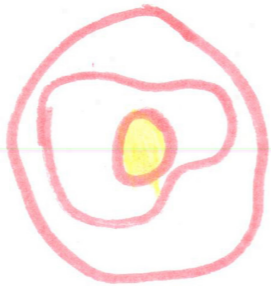
Party together

Piano

Sea  
rugby

laughing

Grass nests



Toy sale



brother

jumping out his wardrobe with his scary teddy.



# COMMUNITY WORKSHOPS AND CONSULTATIONS



COLLABORATIVE MAP FROM PARTICIPANTS AT ST PAUL'S HUB MARCH 2023



DRAWING FROM PARTICIPANTS MEMORIES (KEHALL)







# NEXT STEPS

- /PAINT DAYS
- /INSTALLATION
- /TOOL KIT FOR FUTURE PROJECTS



Top window: 42" wide x 57" high  
Bottom window: 51" wide x 46" high  
Right window: 34" wide x 57" high



## BIBLIOGRAPHY

- Barry, Lynda (2015), *Syllabus: Notes from an Accidental Professor*, Montréal, Canada: Drawn & Quarterly.
- Carney, P. (2021) *Drawing to Learn Anything: No Drawing Skills Required*. Oxford, UK: Loughborough Design Press.
- Fernandes, M. A., Wammes, J. D. and Meade, M. E. (2018) 'The Surprisingly Powerful Influence of Drawing on Memory', *Current Directions in Psychological Science*, 27(5), pp. 302-308. doi: 10.1177/0963721418755385. Available at: <<https://www.youtube.com/watch?v=9L5XP-W5yE8>> [Accessed 29 June 2022].
- McCloud, S. (1994) *Understanding Comics*. New York, NY: William Morrow Paperbacks.
- Paepcke-Hjeltness, V., 2022. Engage with Verena Paepcke - Hjeltness | Sketchnoting: fomentando la alfabetización visual. [online] Youtube.com. Available at: <<https://rohdesign.com>> [Accessed 29 June 2022].
- Rohde, M., 2022. Rohdesign. [online] Rohdesign. Available at: <<https://rohdesign.com>> [Accessed 29 June 2022].

# THANK YOU

OELMASRI@GLOS.AC.UK & KHALL5@GLOS.AC.UK

[HTTP://PITTVILLEPRESS.SUBSTACK.COM](http://pittvillepress.substack.com)



DRAWING FROM  
PARTICIPANTS  
MEMORIES  
(KEHALL)